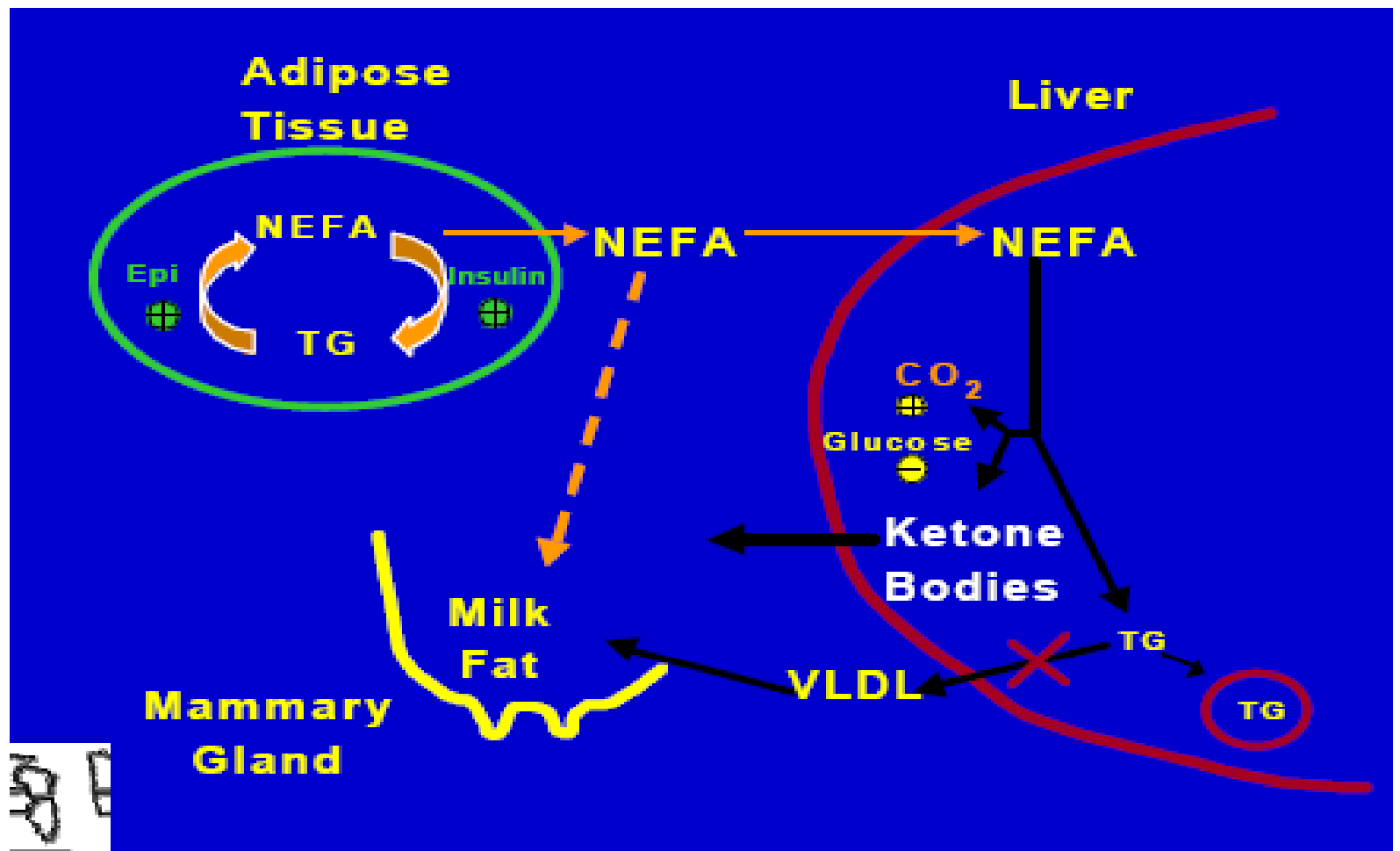


# Fatty liver



# **Stress liver-fat interaction**

- **hot weather**
- **retained placenta**
- **mastitis**
- **other diseases**

# LAMINITIS

## Types of Laminitis

### *Acute laminitis*

- Increased respiration and heart beats
- Warm hoof walls and swelling over the coronary band of the hoof.
  - Hemorrhaging is visible sometimes at the white line, or where the wall joins the sole. Other times hemorrhaging is not visible until it causes a separation along the white line, where dirt enters and forms an abscess.

