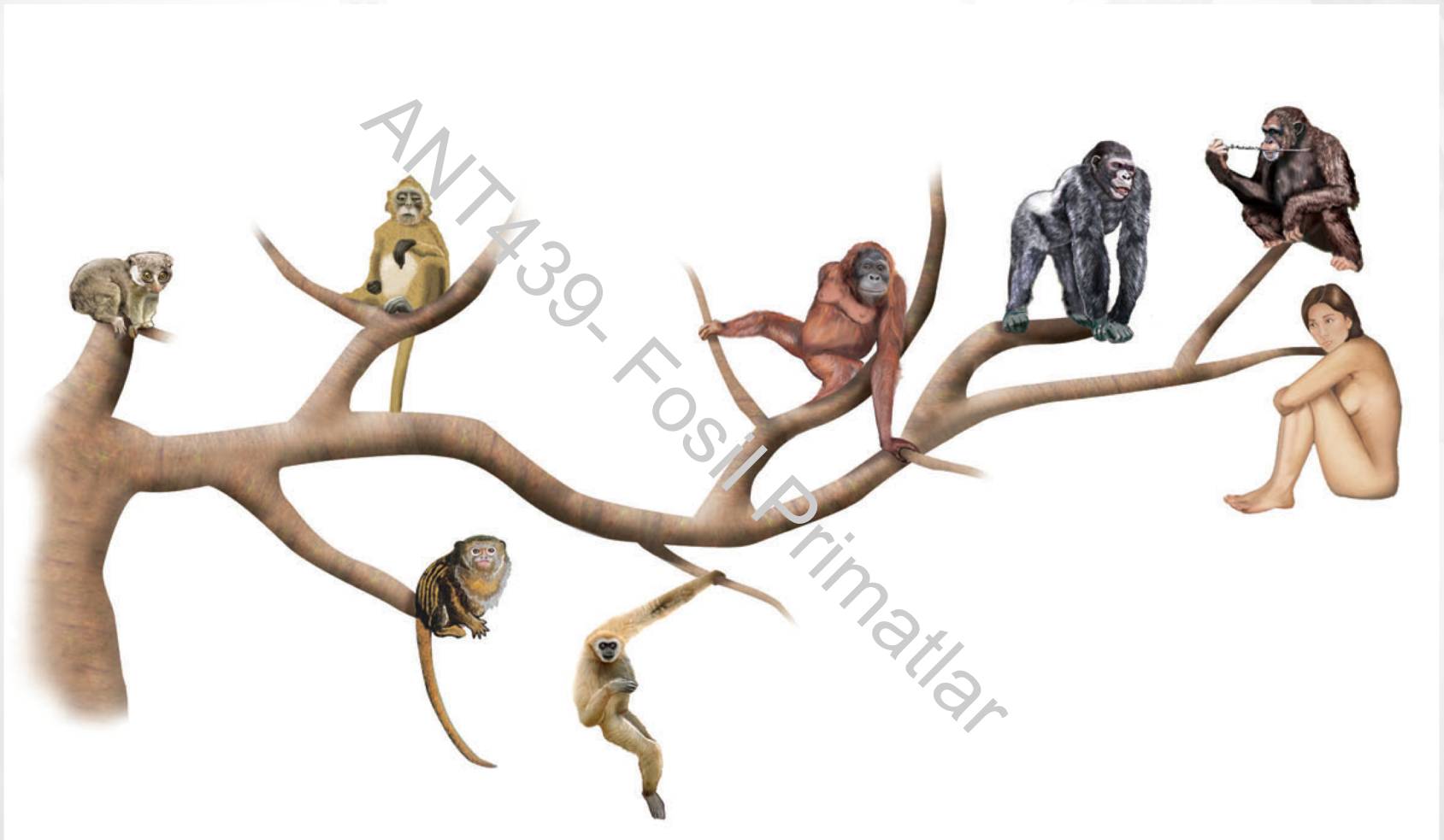


# Outline

## Primatların Genel Özellikleri

ANT439- Fossil Primatlar

# Primat Nedir?



- **Primatlar**, çok hücreli, sinir sistemine sahip, vertebralı, homeotherm ve memeli canlılardır.



# Primatların Özellikleri



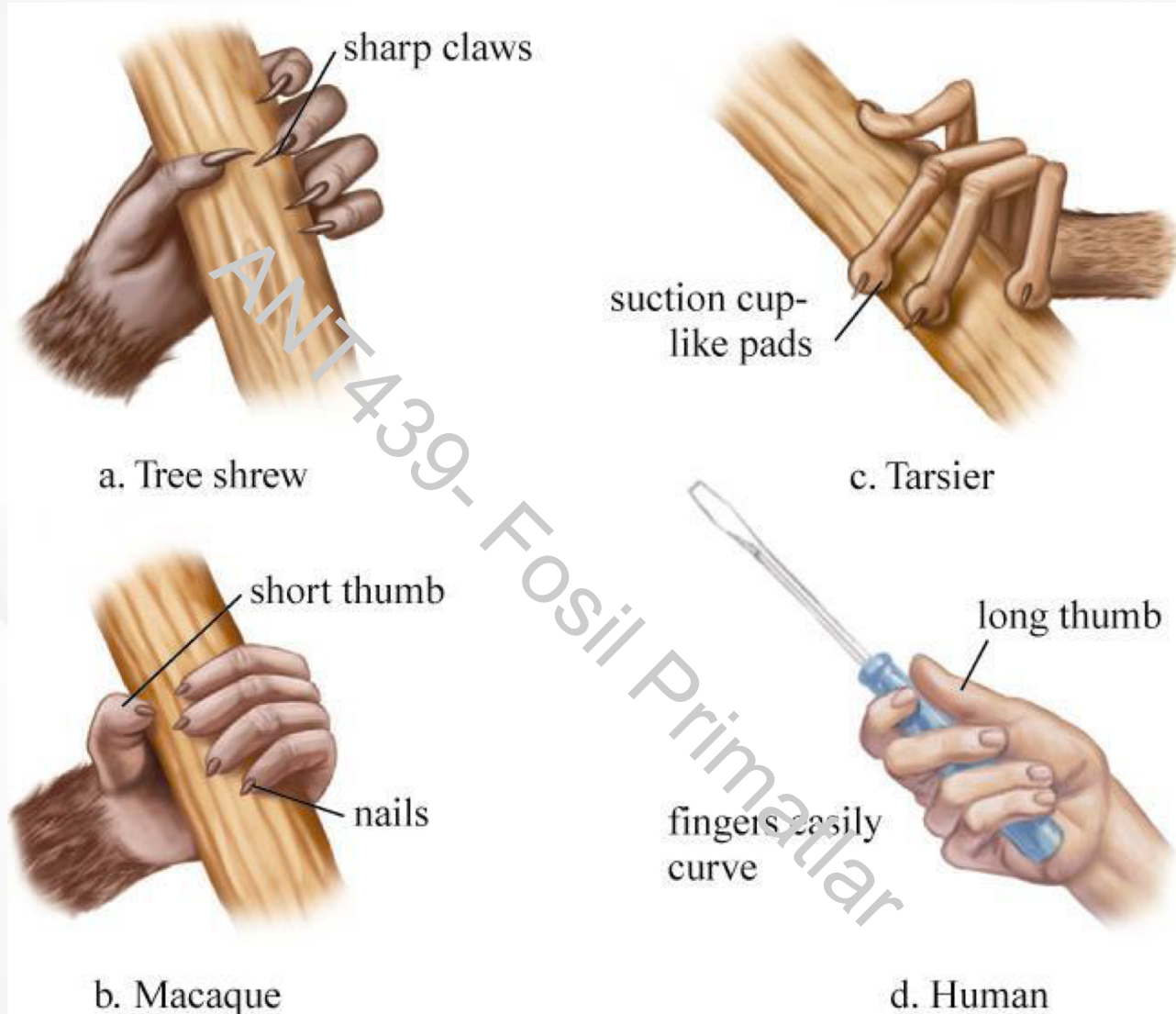
ANT439- Fossil Primatlar

# Anatomik Özellikleri

- Genelleştirilmiş Vücut Yapısı



# Anatomik Özellikleri



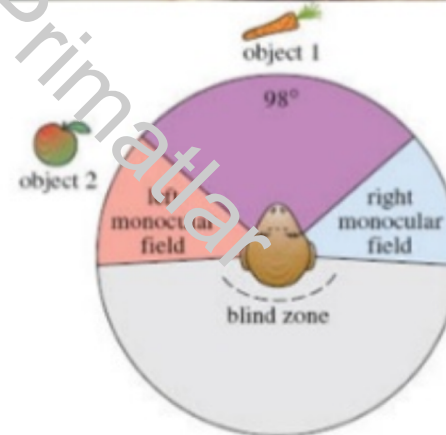
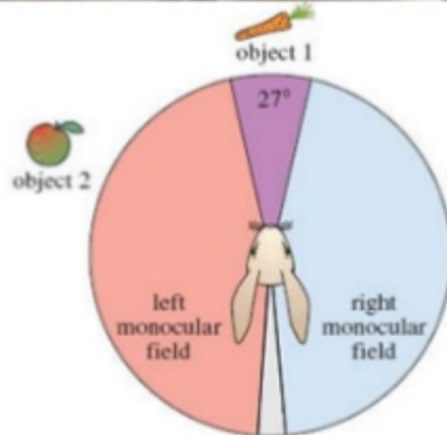
# Anatomik Özellikleri



- Çoğunlukla pençe yerine gelişen düz, keratin tırnak gelişimi

# Anatomik Özellikleri

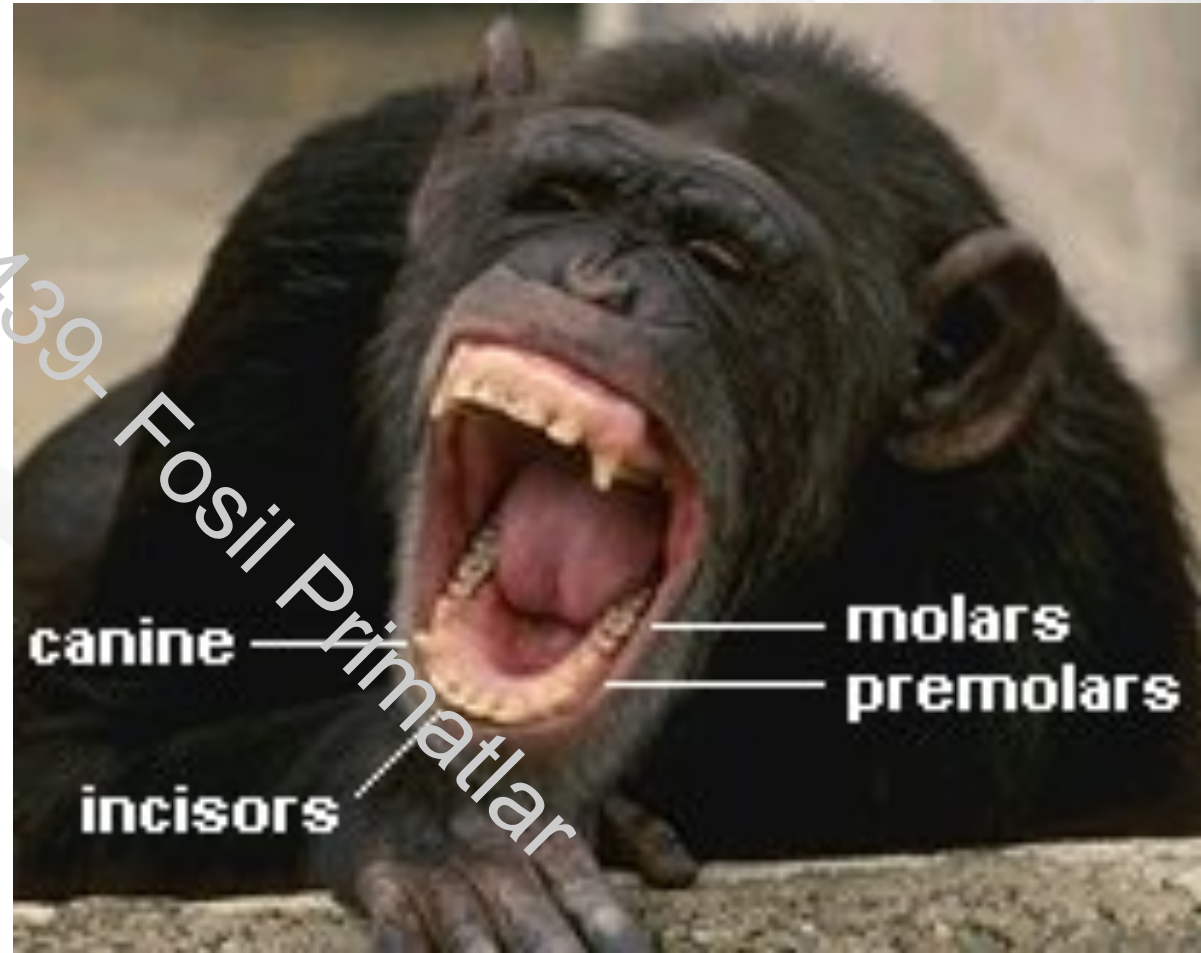
## Binocular Vision



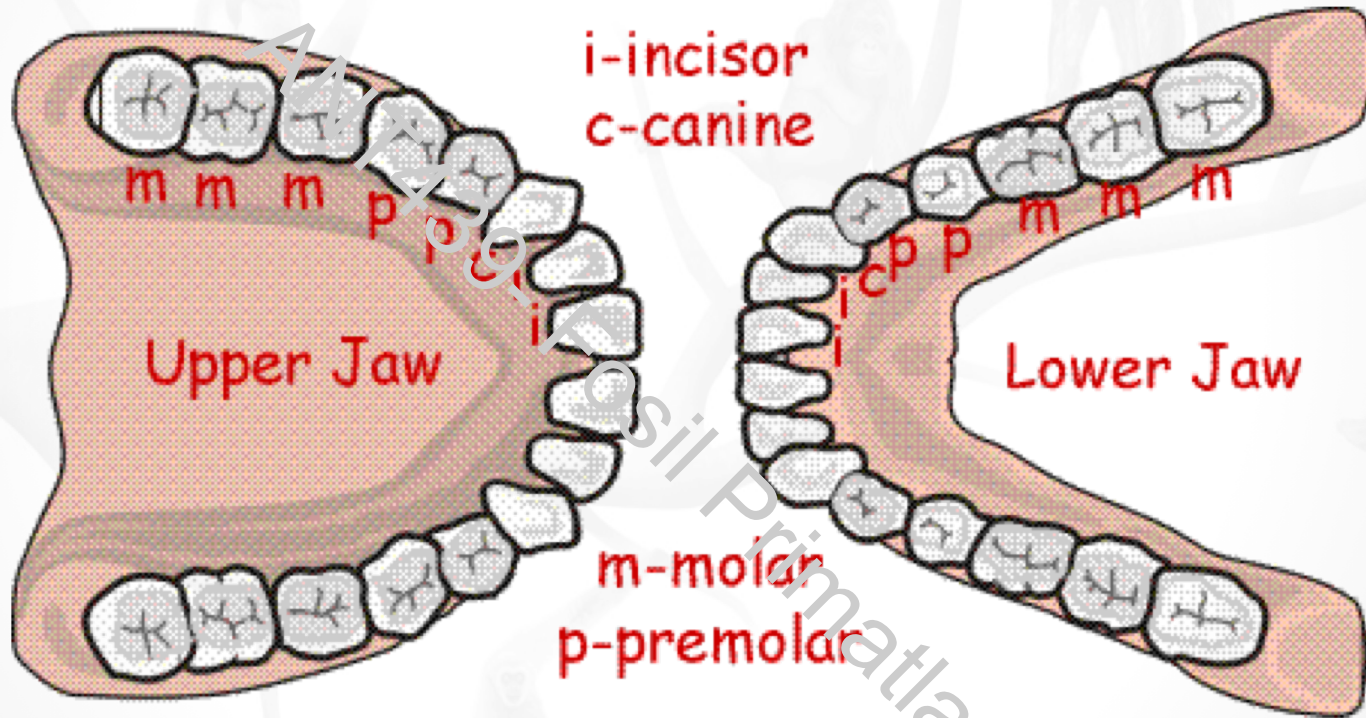


# Anatomik Özellikleri

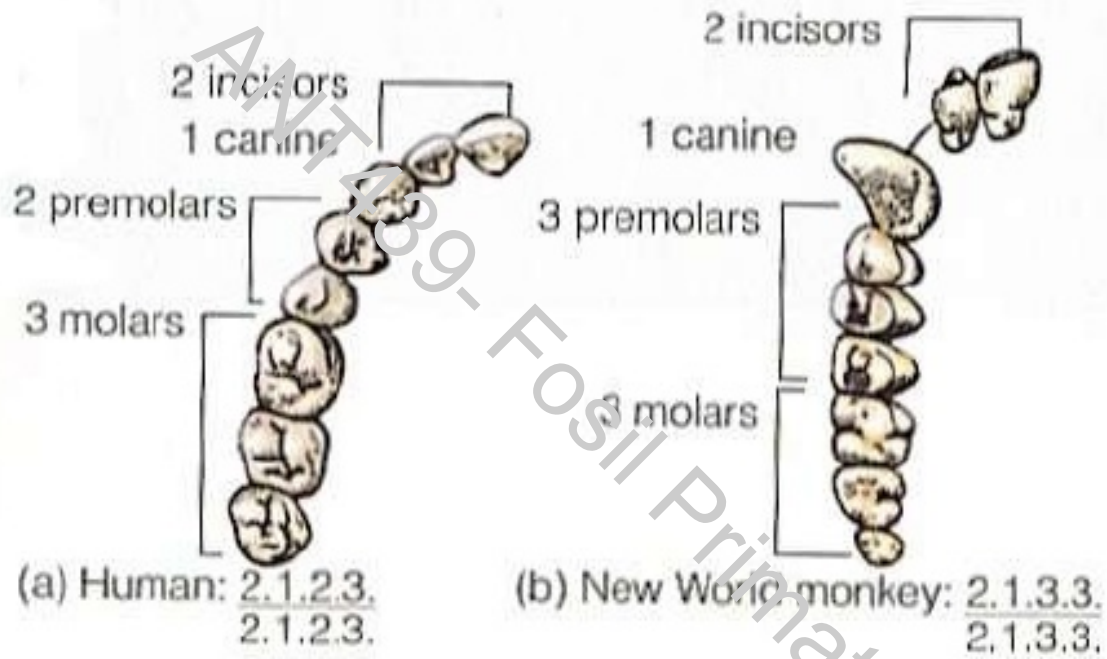
- Generalized Teeth



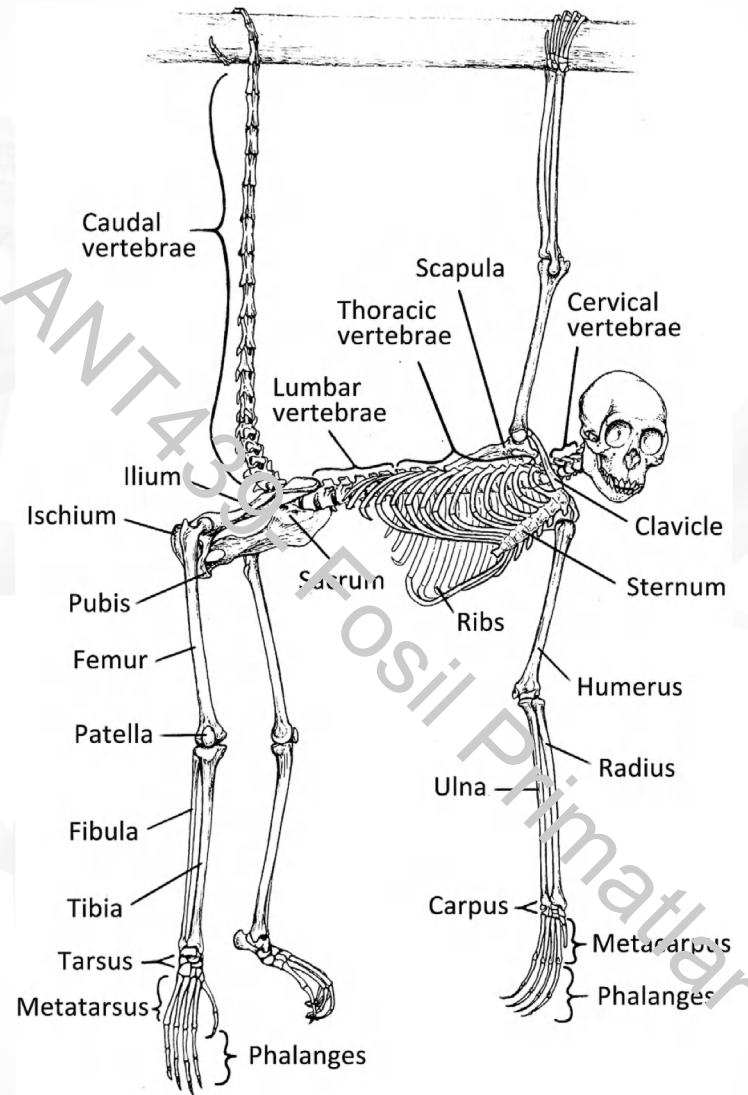
# Primatların Diş Yapısı



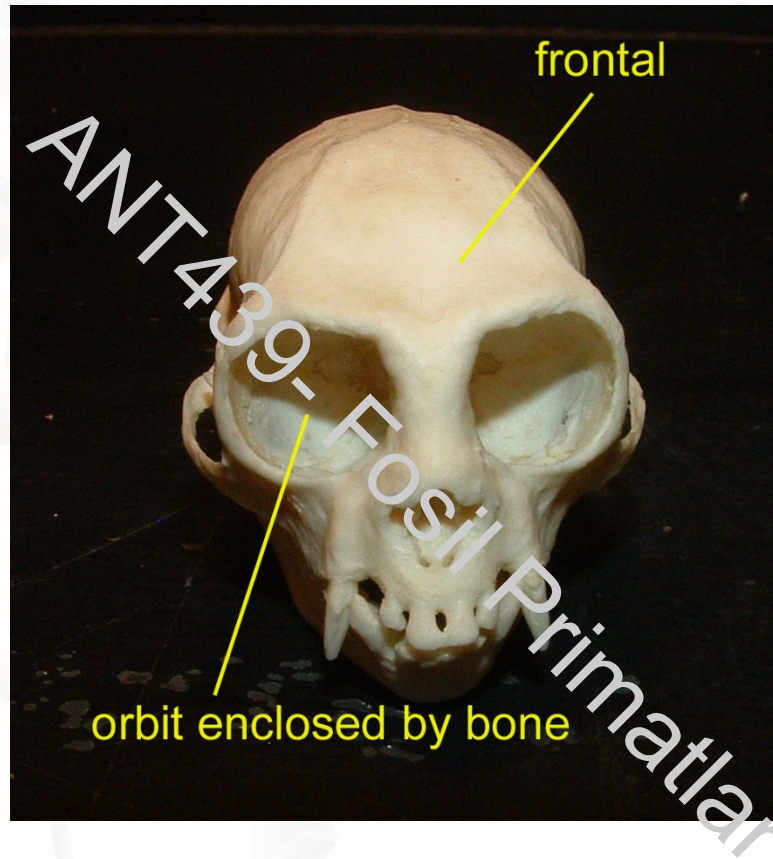
# Primatların Diş Yapısı



# Anatomik Özellikleri

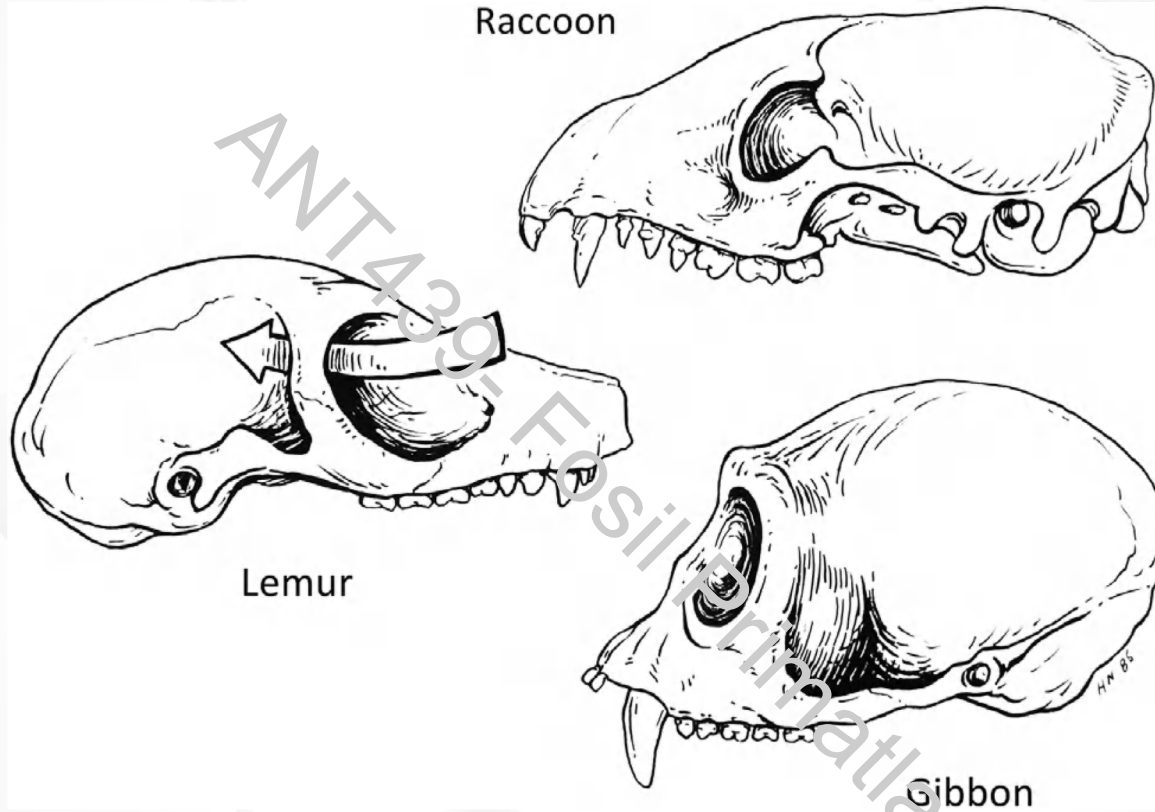


# Anatomik Özellikleri

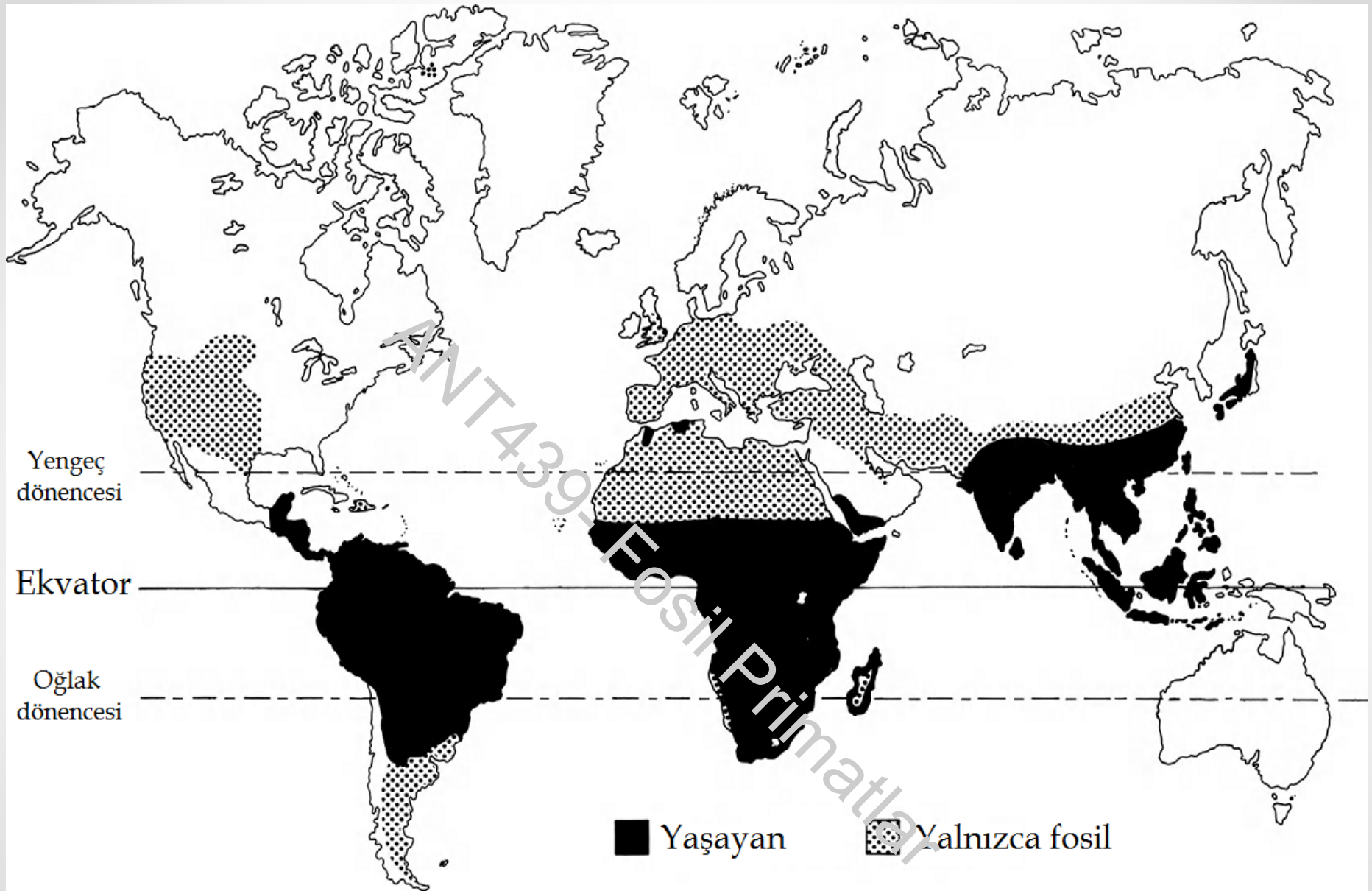


Enclosed Bony Eye Orbits in the Skull

# Anatomik Özellikleri



Postorbital Closure



İnsan hariç yaşayan fosil primatların coğrafik dağılımı (Fleagle, 2013)