

# Outline

ANT341-Kazı ve Laboratuvar Teknikleri

Arkeolojik kazı, araç ve gereçlerinin tanıtılması

# Kazı Ekibi



# Kazı Ekibi

Kazı ekibi birçok disiplinden uzmanlar içerebilir

- Sedimentolog
- Paleontolog
- Antropolog
- Jeolog
- Arkeolog
- Mikromemeli uzmanı
- Jeofizik
- Palinoloji uzmanı
- Vd.....

ANT 841-Kazı ve Laboratuvar Teknikleri

# Kazı Araç-Gereçleri





The University of Sydney's archaeological excavations at Nea Paphos in Cyprus, 1996. Photo and © Helen Nicholson



University of Sydney's archaeological excavations at Nea Paphos in Cyprus, 1996. Photo and © Paphos Archaeological Project



Dustpan and brush used during The University of Sydney's archaeological excavations at Nea Paphos in Cyprus, 1996. Photo and © Helen Nicholson



A workman sieving the soil for small finds at Zagora, 1967. Photo and © Australian Archaeological Institute at Athens





ANı 341-Kazı ve Laboratuvar Teknikleri

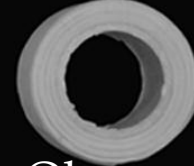
El Testeresi



hand loppers



Olay yeri şeridi



metal post survey flags



fiberglass post survey flags



pusula



GPS



ANT347-Kazı ve Laboratuvar Teknikleri

# Arama ve Saha Hazırlama Ekipmanları



# Kazı Ekipmanları



Equipment used during excavation: (a) bamboo skewers; (b) plastic spoon; (c) tweezers; (d) pointed trowel; (e) square trowel; (f) paint brushes; and (g) makeup brushes.

# Kazı Ekipmanları





Equipment used for clearing and excavation: (a) spackle bucket; (b) plastic dustpan; (c) root clippers; and (d) whisk broom.

# Haritalama ve Ölçme Ekipmanları

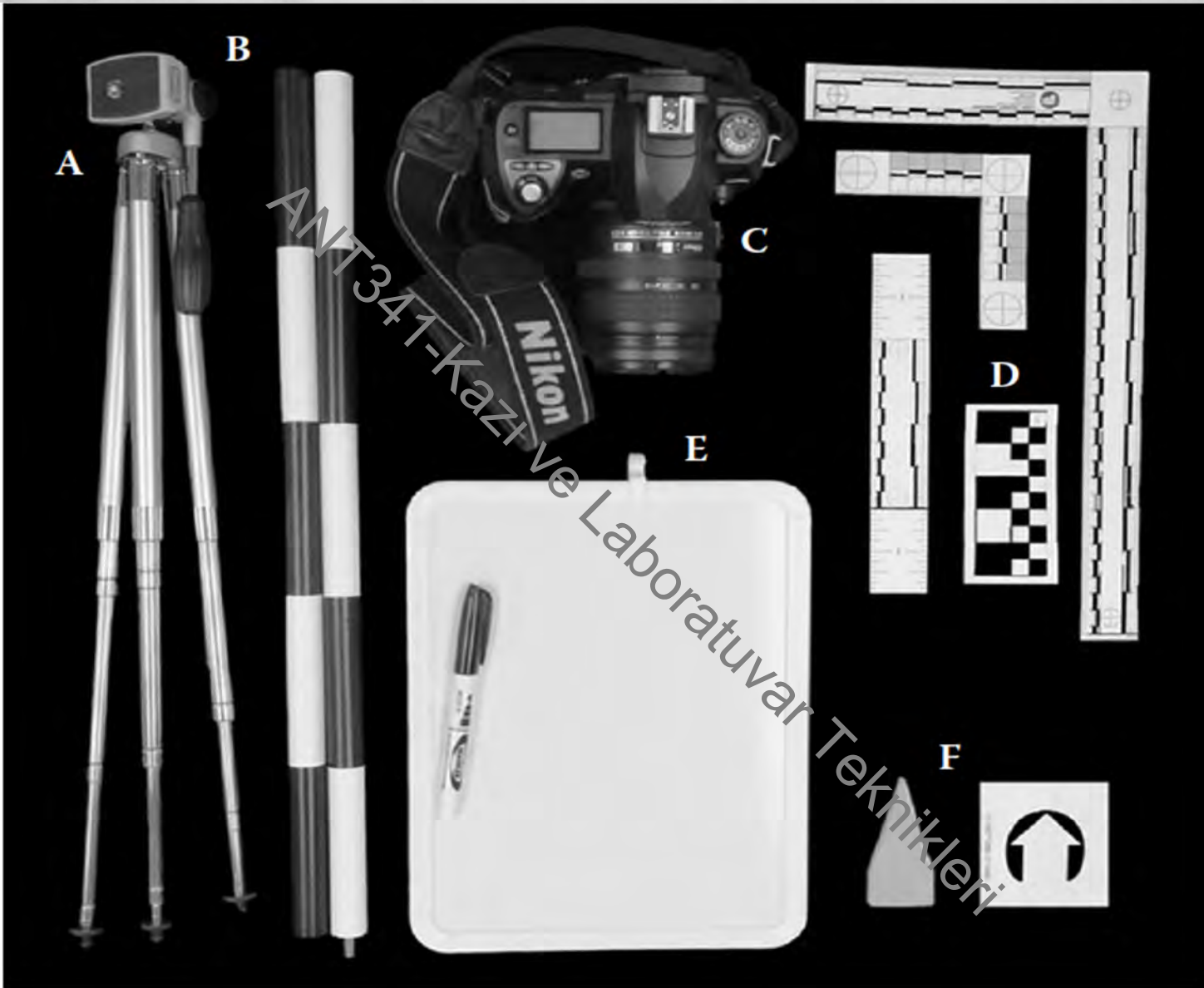


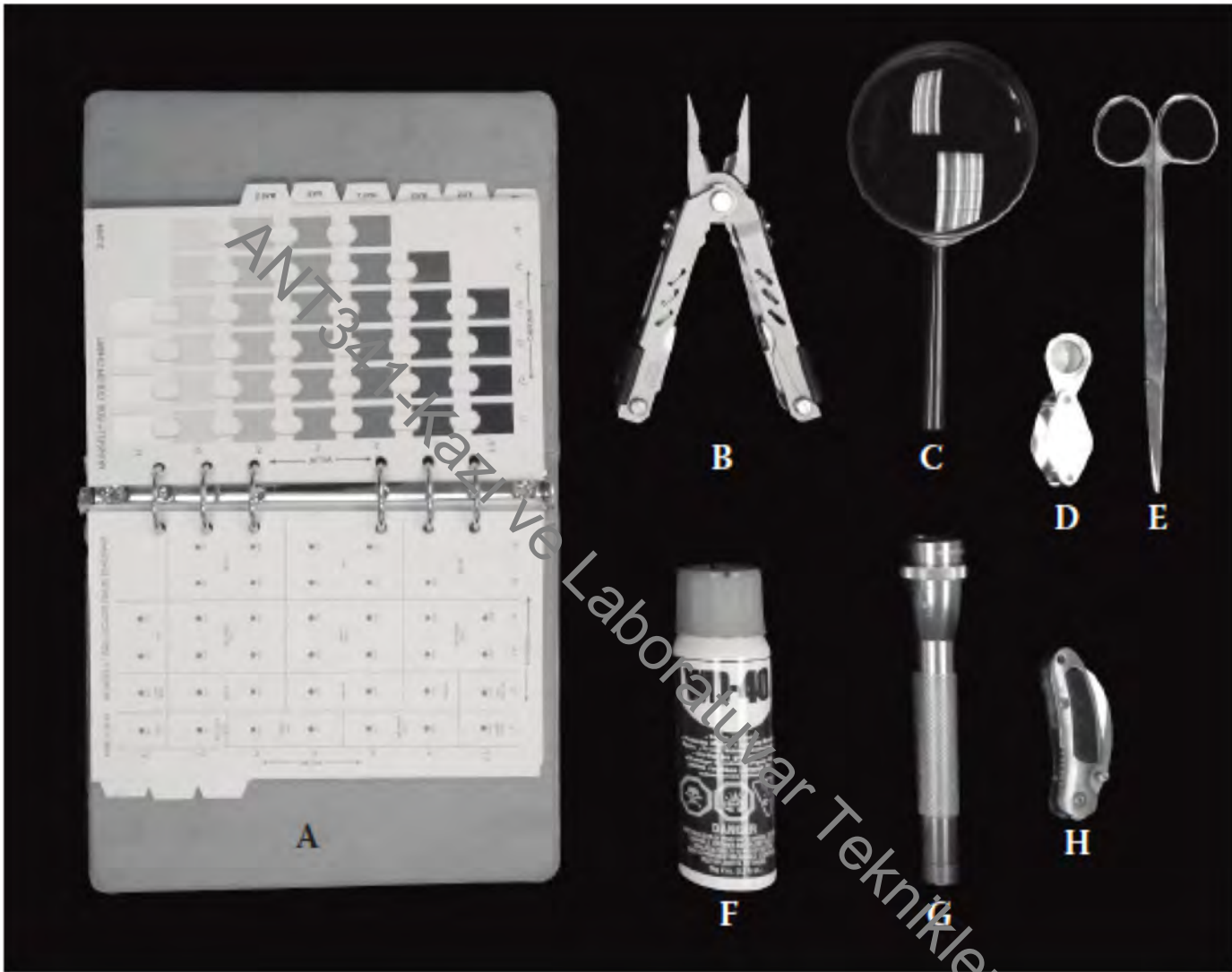
Equipment used for measurement: (a) folding stick tape; (b) hand measuring tape; (c) 50-m tape; and (d) plumb bob

# Haritalama ve Ölçme Ekipmanları













ANT341-Kazi ve Laboratuvar Teknikleri

ANT341-Kazı ve Laboratuvar Teknikleri







ANT341-Kazı ve Laboratuvar Teknikleri



ANT341-Kazi

ve Laboratuvar Teknikleri