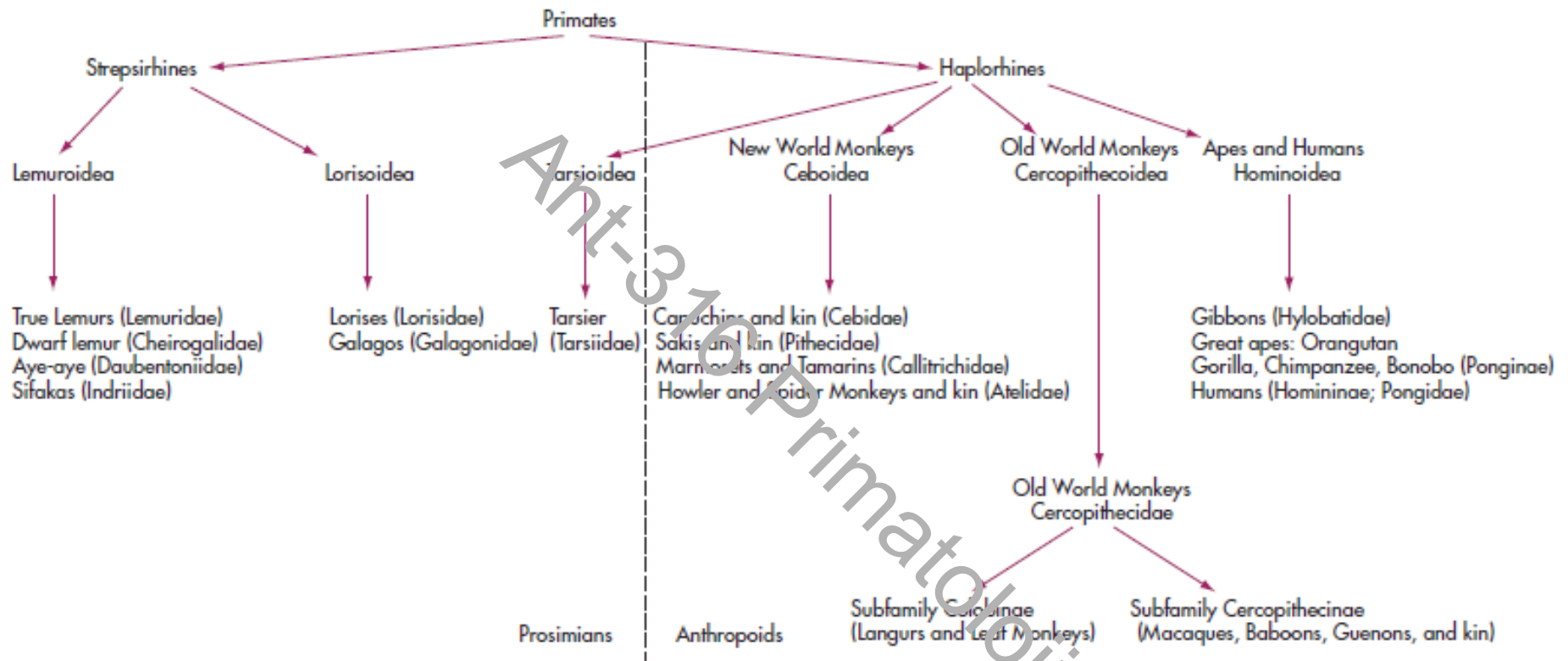


Taxonomic Chart of Living Primates



A taxonomic chart of the living primates.

The Prosimians: Lemurs, Lorises, Galagos



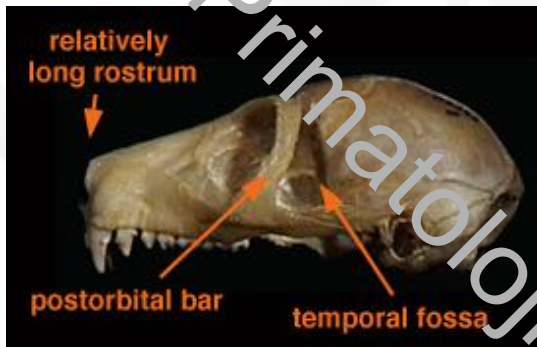
Anatomik Özellikleri



Tapetum lucidum

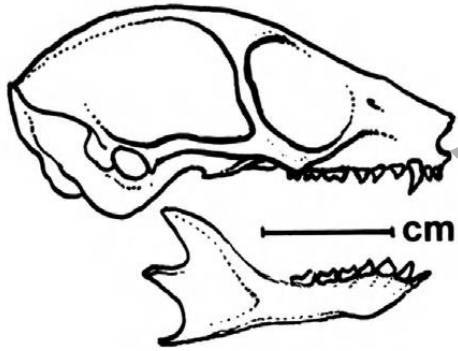


Rhinarium

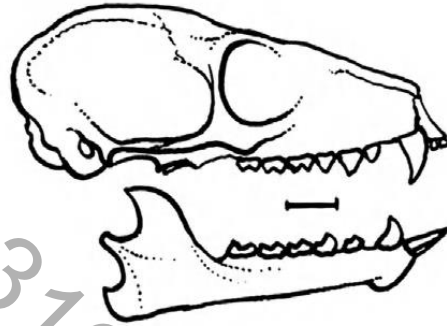


Postorbital bar

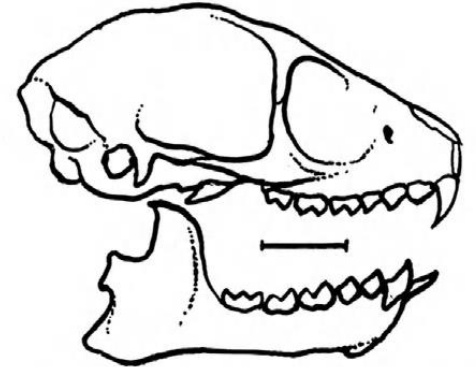
Anatomik Özellikleri



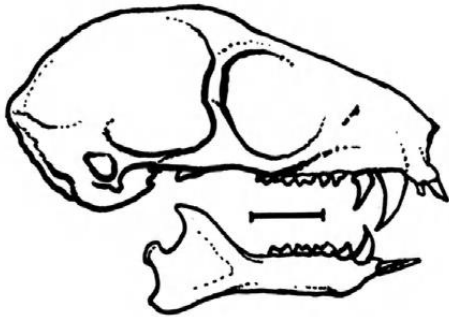
Microcebus murinus



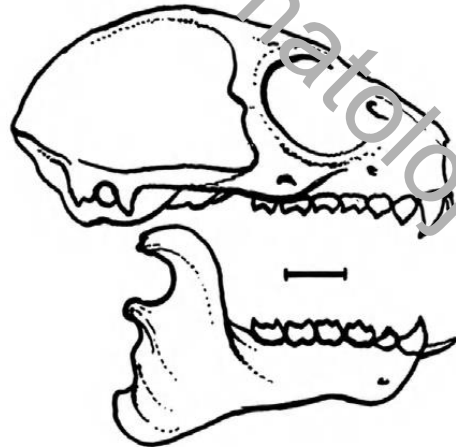
Varecia variegata



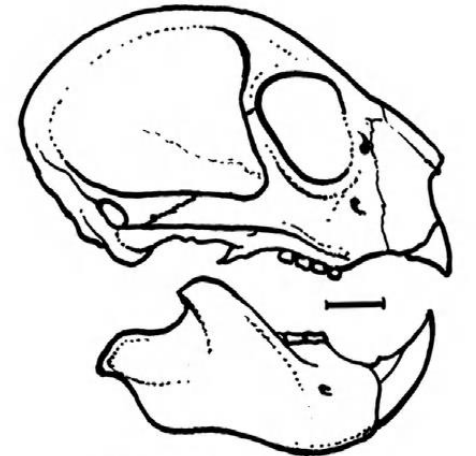
Lepilemur mustelinus



Phaner furcifer



Hapalemur griseus



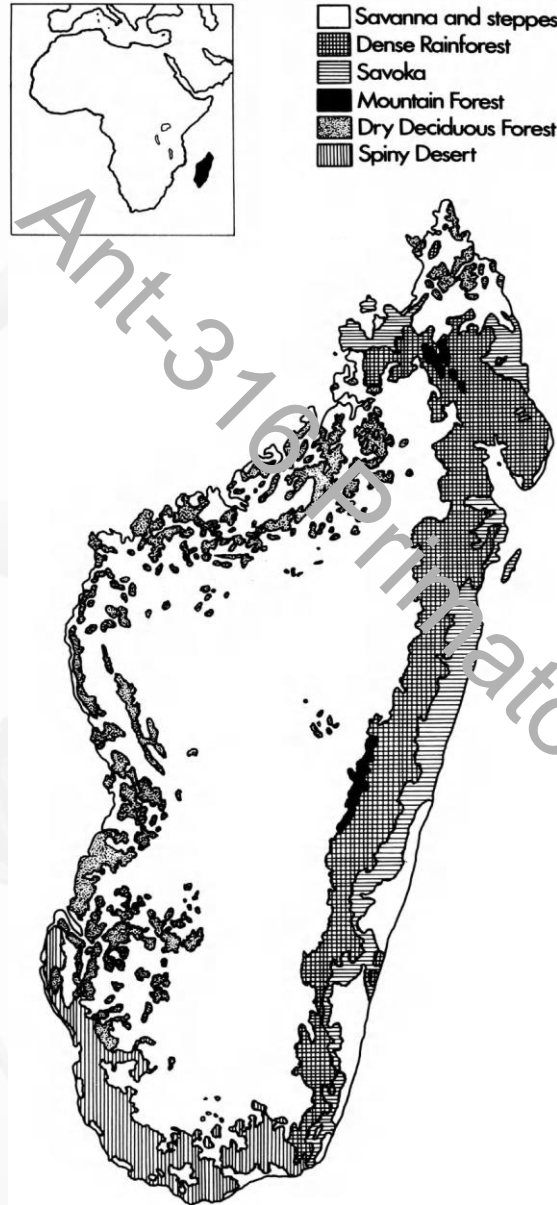
**Daubentonia
madagascariensis**

Madagaskar Strepsirrhini

Lemurs

- Lemurlar Madagaskar adasında endemiktir, bu da dünyanın başka bir yerinde doğal olarak bulunmadıkları anlamına gelir.
- Çoğu strepsirhin nokturnal ve soliter iken, lemurlar çok uzun zamandan beri tecrit edilmişlerdir, bunlar diurnal ve son derece sosyal olmak üzere çeşitli nişler doldürmüşlardır.
- Mevcut Malagasy lemurları genellikle beş aileye ayrılır: cheirogaleids, lemurids, lepilemurids, indriids ve daubentoniids.

Madagaskar Strepsirrhini



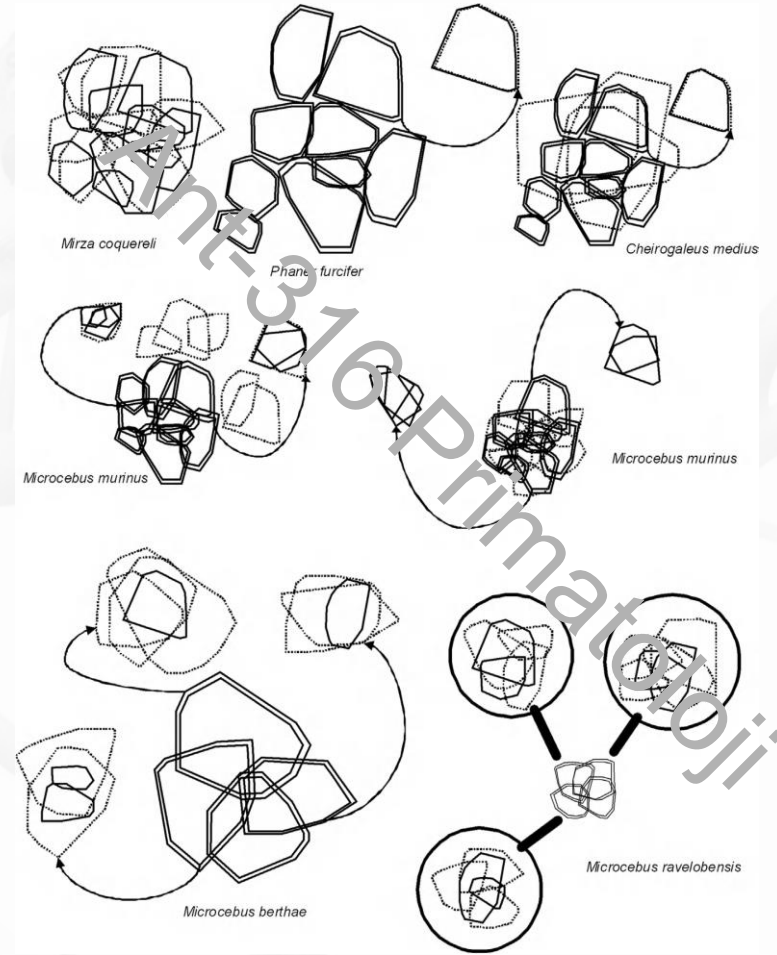
Lady Mouse Lemur Punches Mate in the Face

Ant-316 Primatoloji

VIDEO



Cheirogaleids



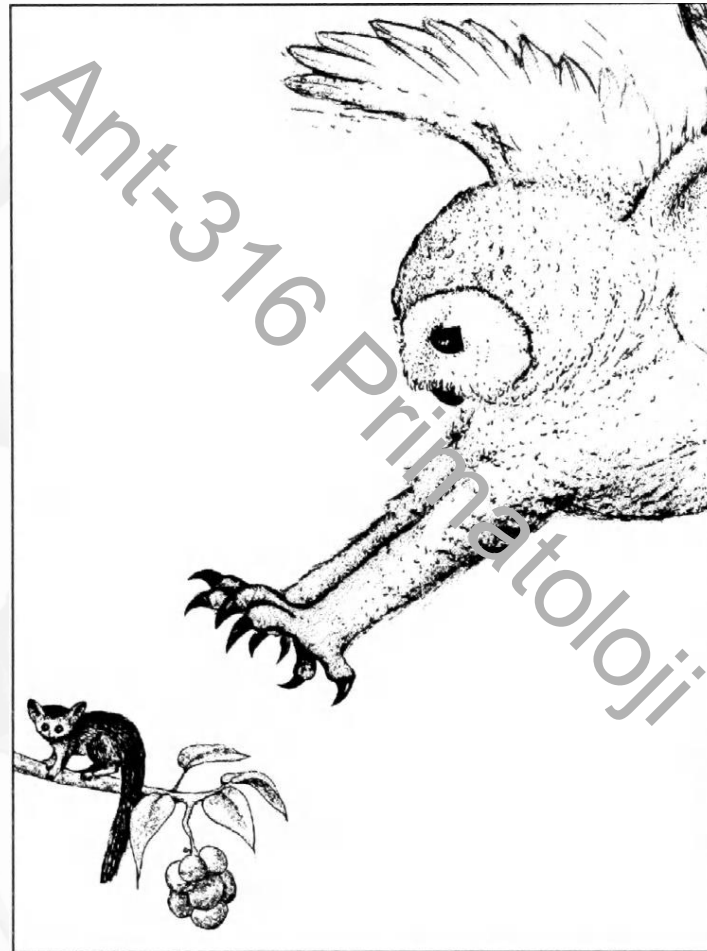
Toplumsal organizasyonda çeşitlilik ve nokturnal cheirogaleidler arasında aralık kullanımı.

Giant mouse lemur

Kingdom:	Animalia
Phylum:	Chordata
Class:	Mammalia
Order:	Primates
Suborder:	Strepsirrhini
Family:	Cheirogaleidae
Genus:	<i>Mirza</i> Gray, 1870



Cheirogaleids



Dwarf lemurs (Cüce lemur)

Kingdom:	Animalia
Phylum:	Chordata
Class:	Mammalia
Order:	Primates
Suborder:	Strepsirrhini
Family:	Cheirogaleidae
Genus:	<i>Cheirogaleus</i> É. Geoffroy , 1812 ^[2]



Cüce lemur

- Cüce lemurlar (*Cheirogaleus*) günümüzde beş türe ayrılmıştır. Bunların hepsi sivri burunlu, kısmen kürkleriyle gizlenmiş orta boyotta kulaklara ve vücuttan biraz daha kısa olan kuyruklara sahiptir.

The fork-marked lemur (Phaner)

Kingdom:	Animalia
Phylum:	Chordata
Class:	Mammalia
Order:	Primates
Suborder:	Strepsirrhini
Family:	Cheirogaleid ae
Genus:	<i>Phaner</i> Gray, 1870

