

**PHYLUM: CHORDATA**

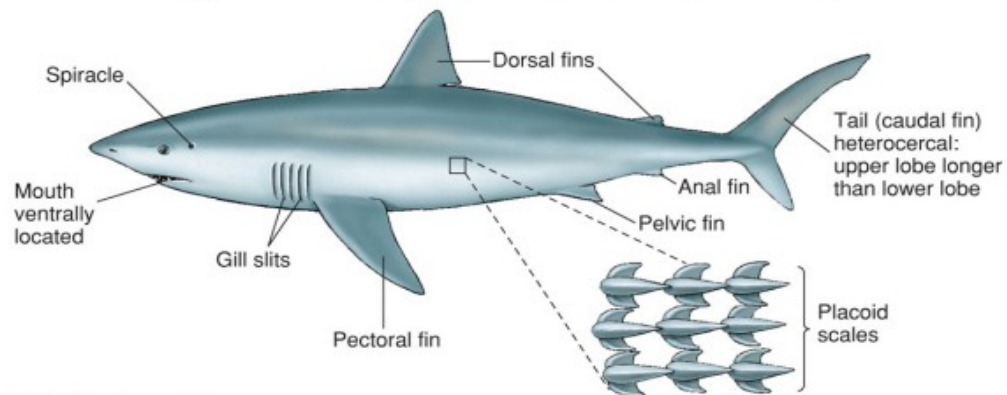
**SUBPHYLUM: VERTEBRATE (CRANIATA)**

**SUPERCLASIS: GNATHASTOMATA (JAWED FISHES)**

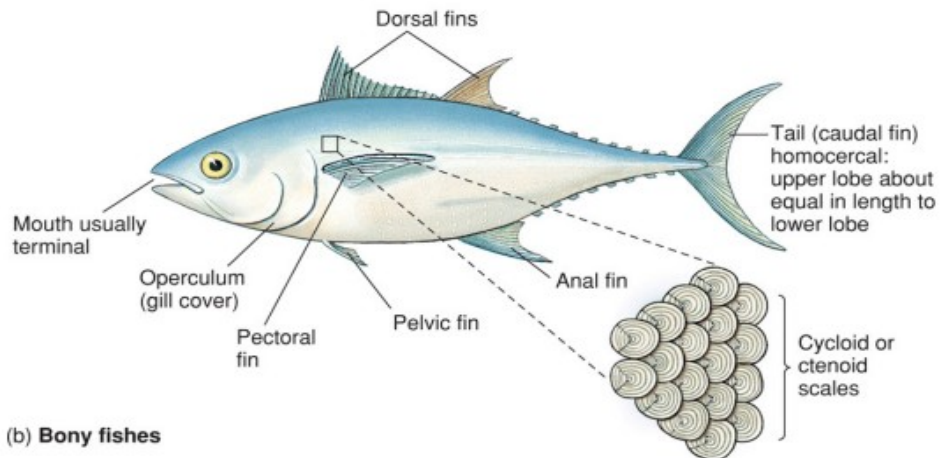
**GENERAL FEATURES OF PISCES**

# BODY PLAN

Copyright © The McGraw-Hill Companies, Inc. Permission required for reproduction or display.

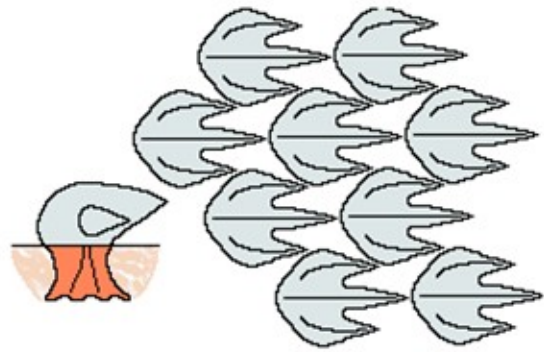


(a) Cartilaginous fishes

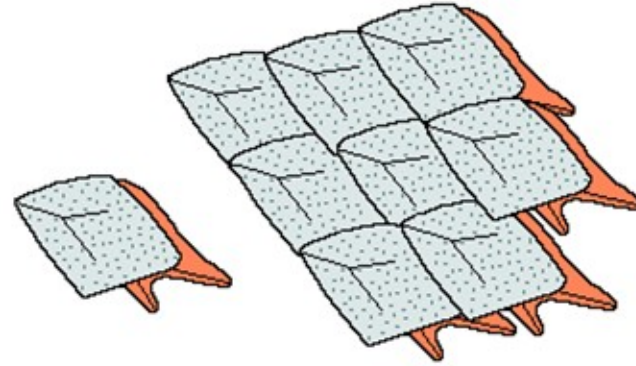


(b) Bony fishes

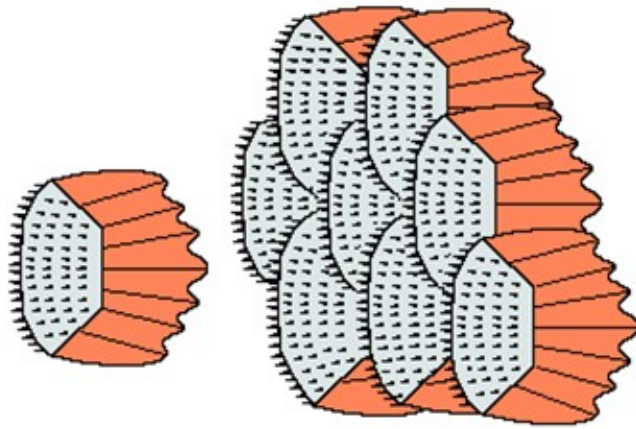
# SCALE TYPES



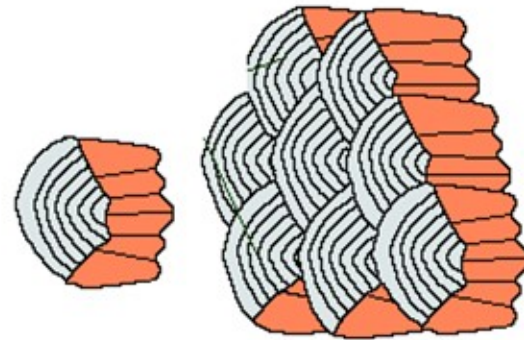
a) Placoid



b) Ganoid

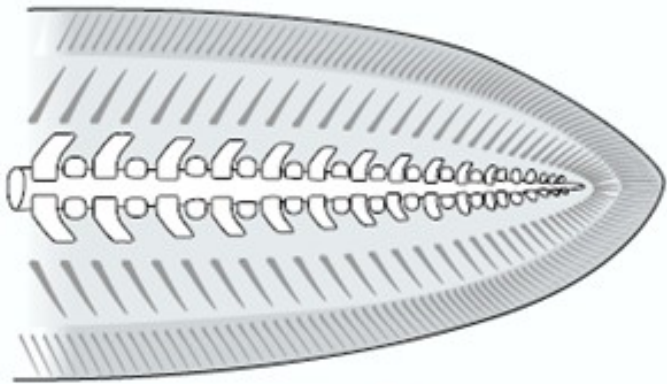


c) Ctenoid

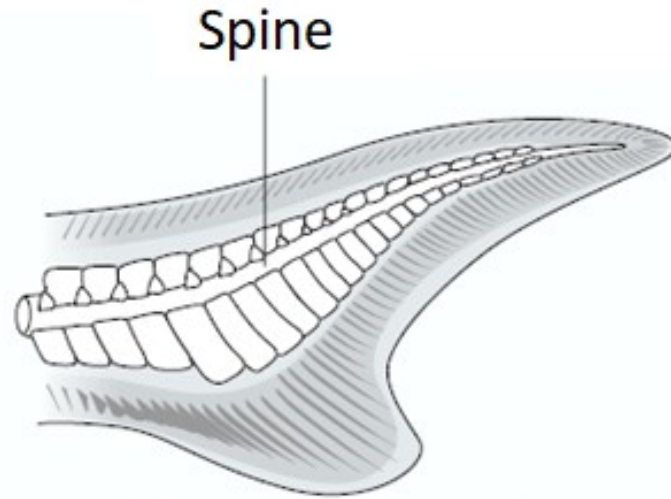


d) Cycloid

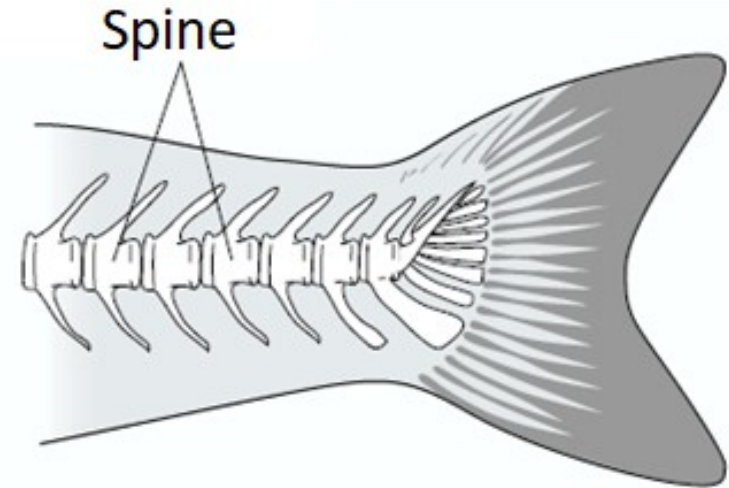
# CAUDAL FIN TYPES



**a) Diphyccercal**



**b) Heterocercal**



**c) Homocercal**

# VARIATIONS OF CAUDAL FIN

## TAILS OF FISHES

SOME COMMON NAMES



Pointed



Naked & pointed



Pointed (undifferentiated)



Rounded



Rounded (unevenly)



Truncate, flat, square, or straight



Truncate; slightly emarginate

KOAW.ORG



Emarginate, indented, or concave



Double emarginate or biconcave.



Forked (lightly)



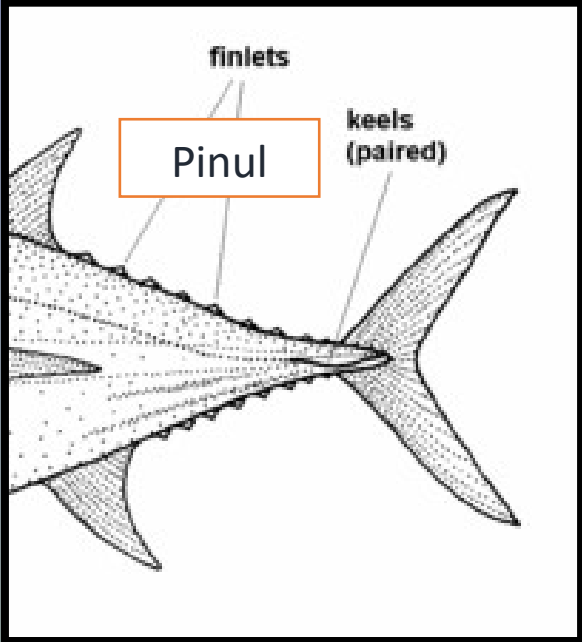
Forked (unevenly)



Forked (deeply); can also be considered lunate

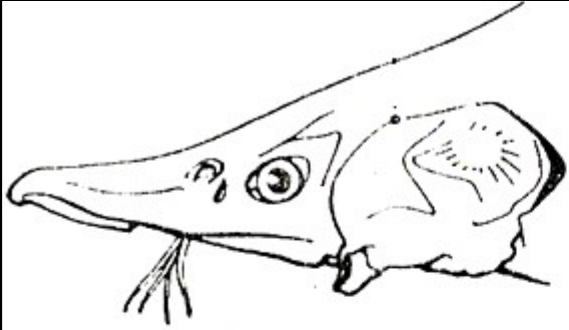


Lunate; (looks like a crescent moon)

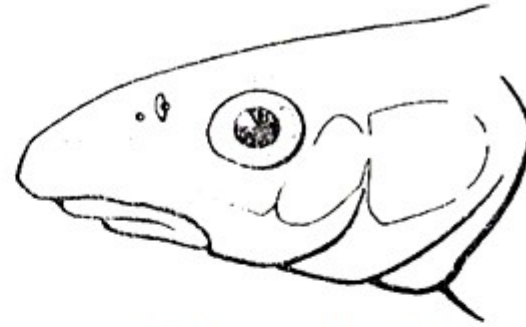


Koaw.org

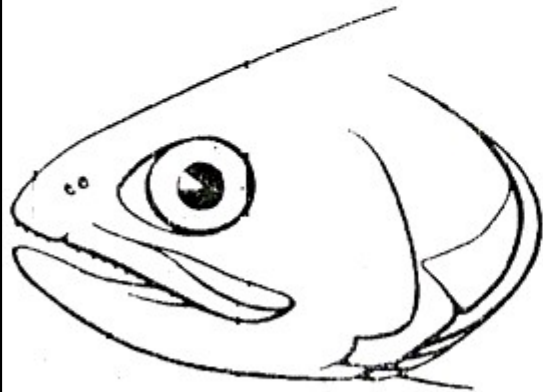
# FISH MOUTH TYPES



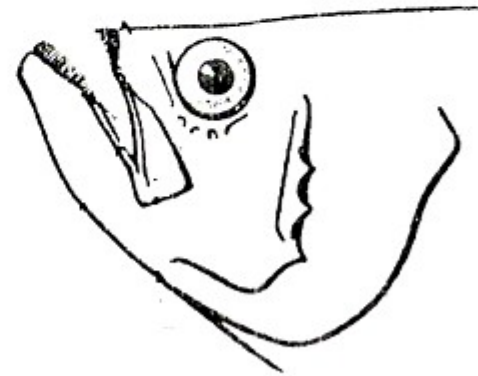
**Ventral**



**Subterminal**

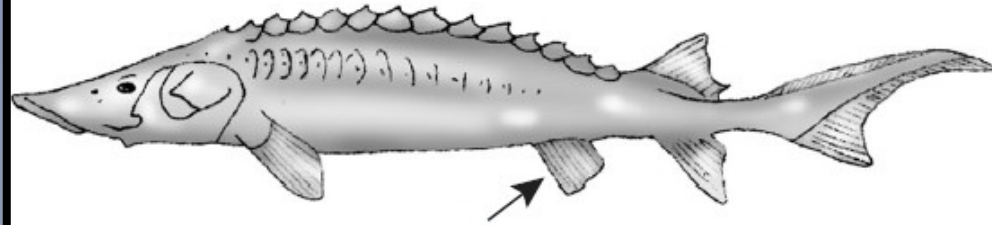


**Terminal**

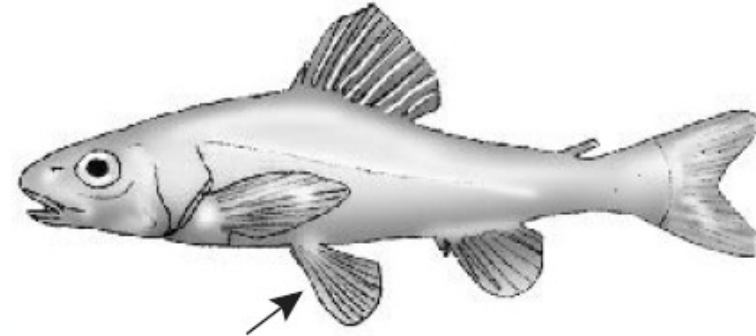


**Dorsal**

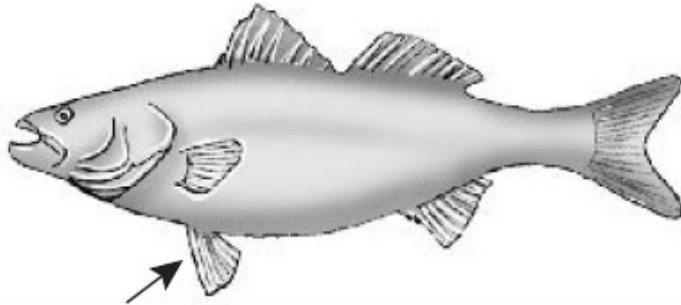
# POSITIONS OF PELVIC FINS



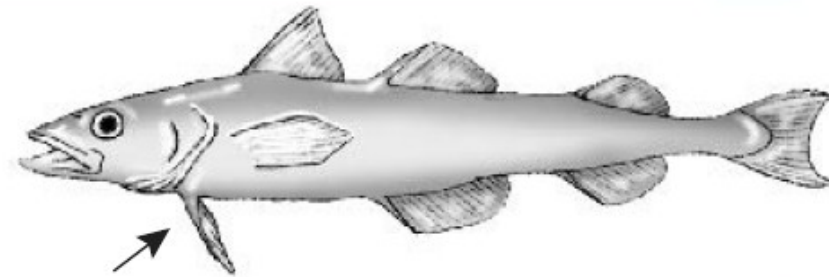
**a) Abdominal**



**b) Subabdominal**

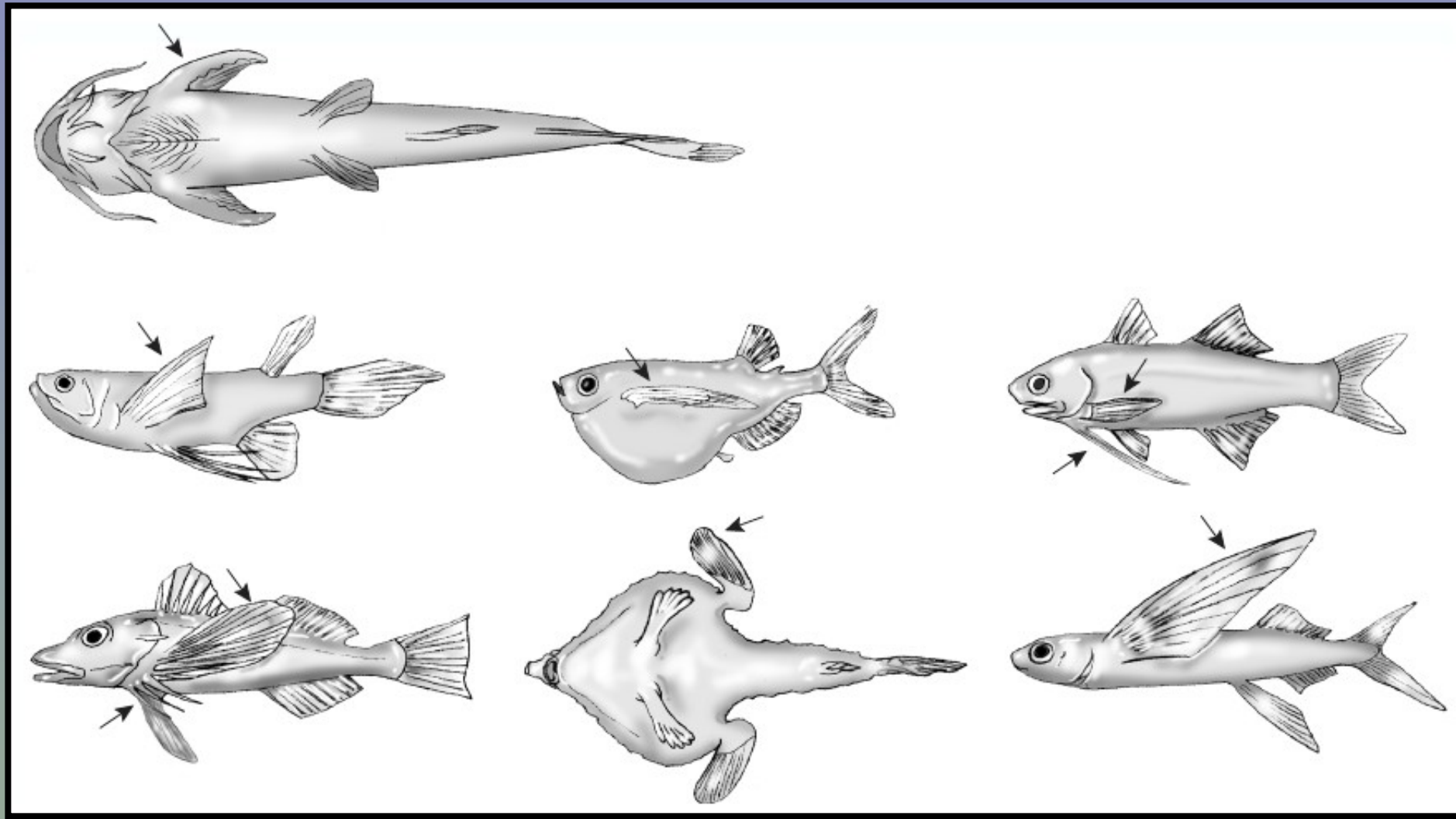


**c) Thoracic**



**d) Jugular**

# POSITIONS OF PECTORAL FINS





# LATERAL LINE

