

**2019-2020**  
**PLANT MORPHOLOGY LAB.**

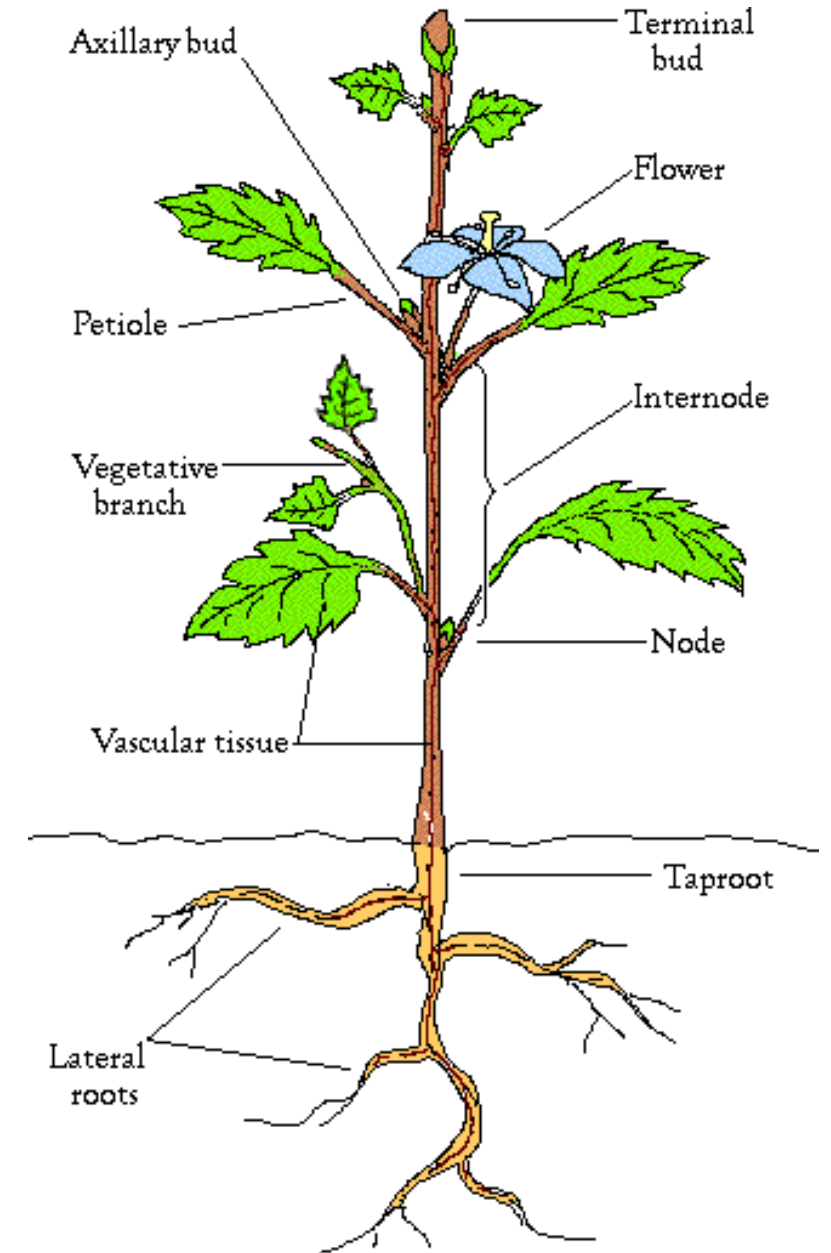
**Dr. Aydan ACAR ŞAHİN**  
**2nd week**

# Plant morphology, Organs and Organ System

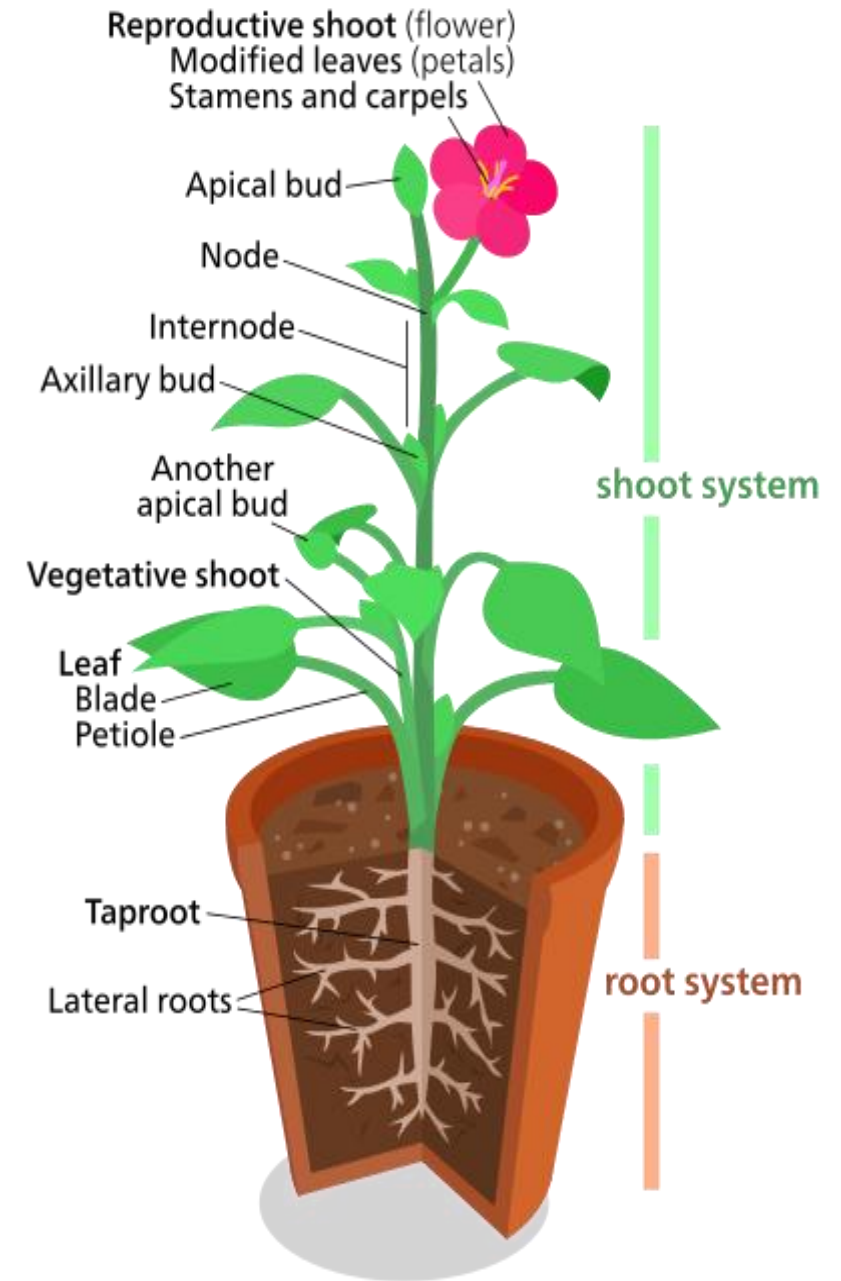
**Morphology** – (Morphe = form + logos = study). It deals with the **study of forms and features** of different plant organs like roots, stems, leaves, flowers, seeds, fruits etc. Morphology intergrades somewhat with plant anatomy, which is the study of tissue and cell structure of plant organs.

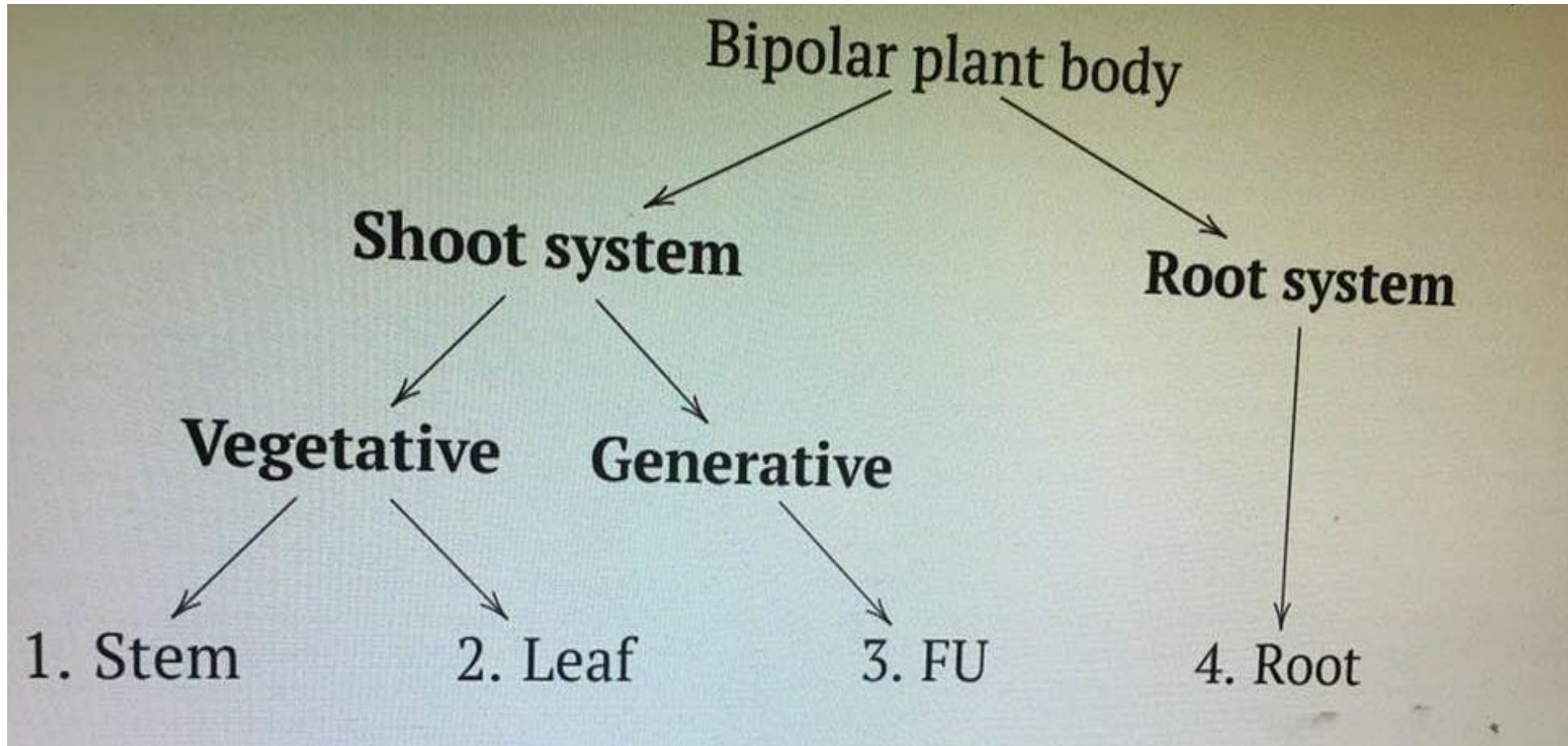
Morphology is the study of:

- ❖ External features of plants,
- ❖ Arrangement,
- ❖ Relationship
- ❖ Of organs.



- The body of a typical Angiospermic plant is differentiated into :
  - ✧ *an underground root system*
  - ✧ *an aerial shoot system*
- The shoot system consists of stem (including branches), leaves, flowers and fruits.
- The most primitive plants have thallus body, more advanced is the shoot (unipolar) plant body, and most land plants have the bipolar plant body.





Bipolar plant: organ systems and four organs

# PLANT ORGANS

**Vegetative**

**Root**

**Stem**

**Leaf**

**Generative**

**Flower**

**Fruit**

**Seed**

# External Stem Structure

Apical Meristem

