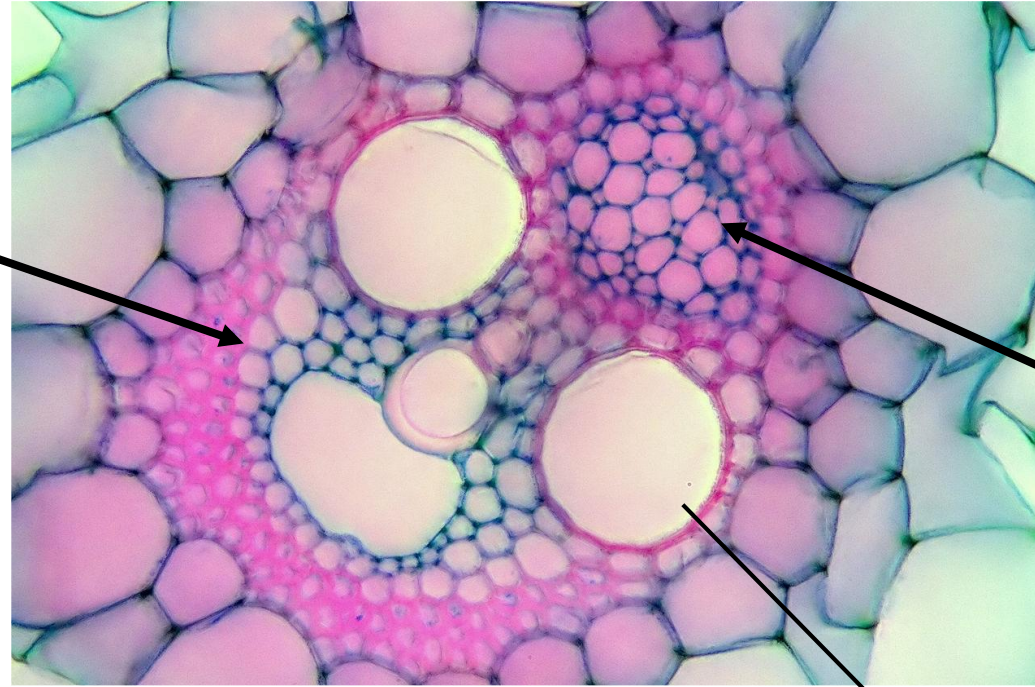
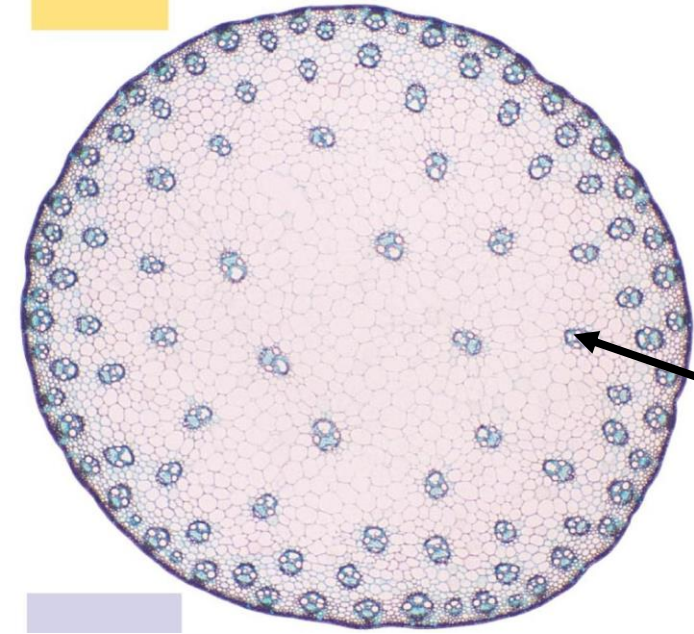


2019-2020
PLANT MORPHOLOGY LAB.

Dr. Aydan ACAR ŞAHİN
3rd week



Floem

Trake

Subject: **Primary stem anatomy**

Sub topic: **Monocotyledone stem (Collateral closed vascular bundle)**

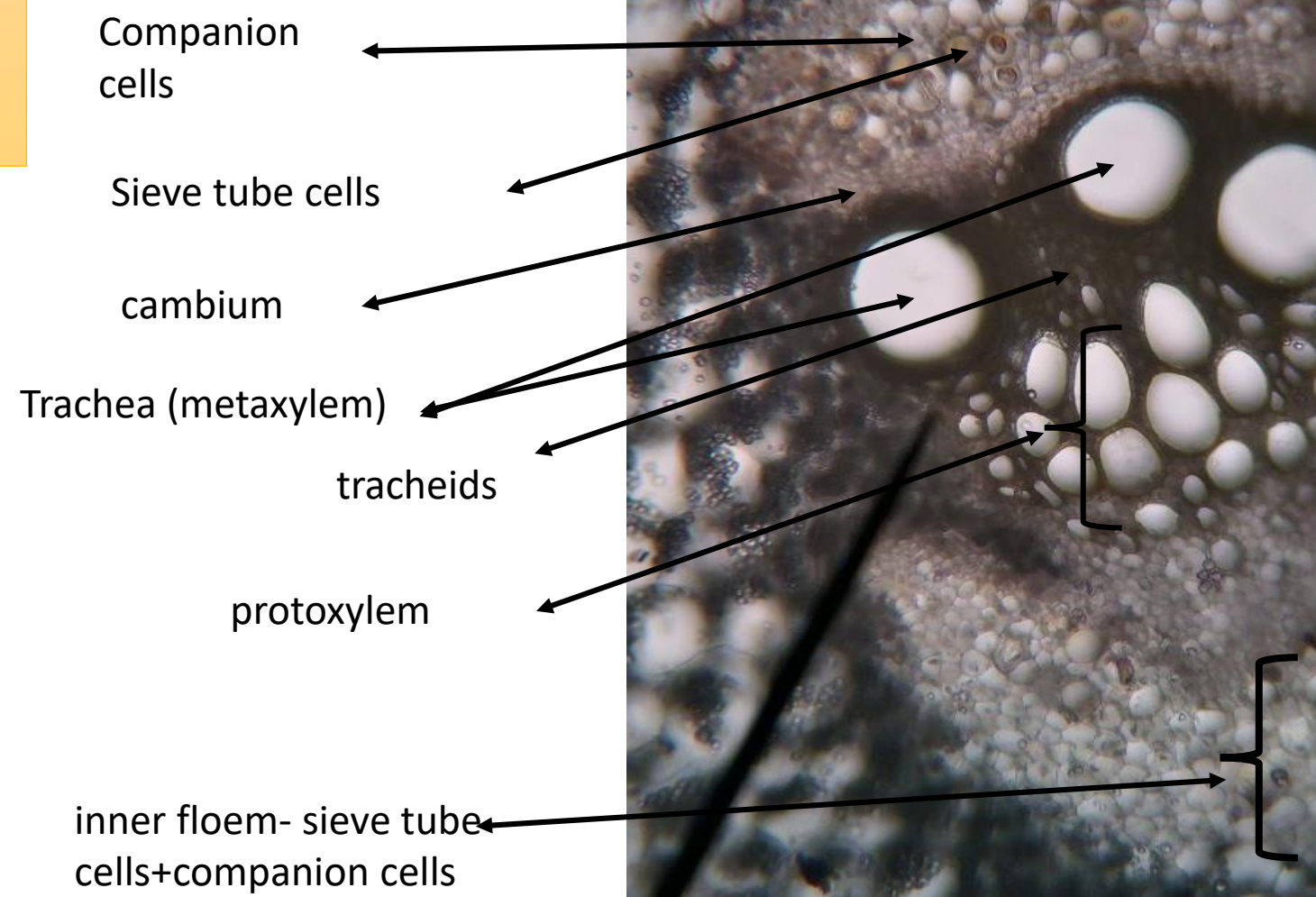
Sp.: **Zea mays**

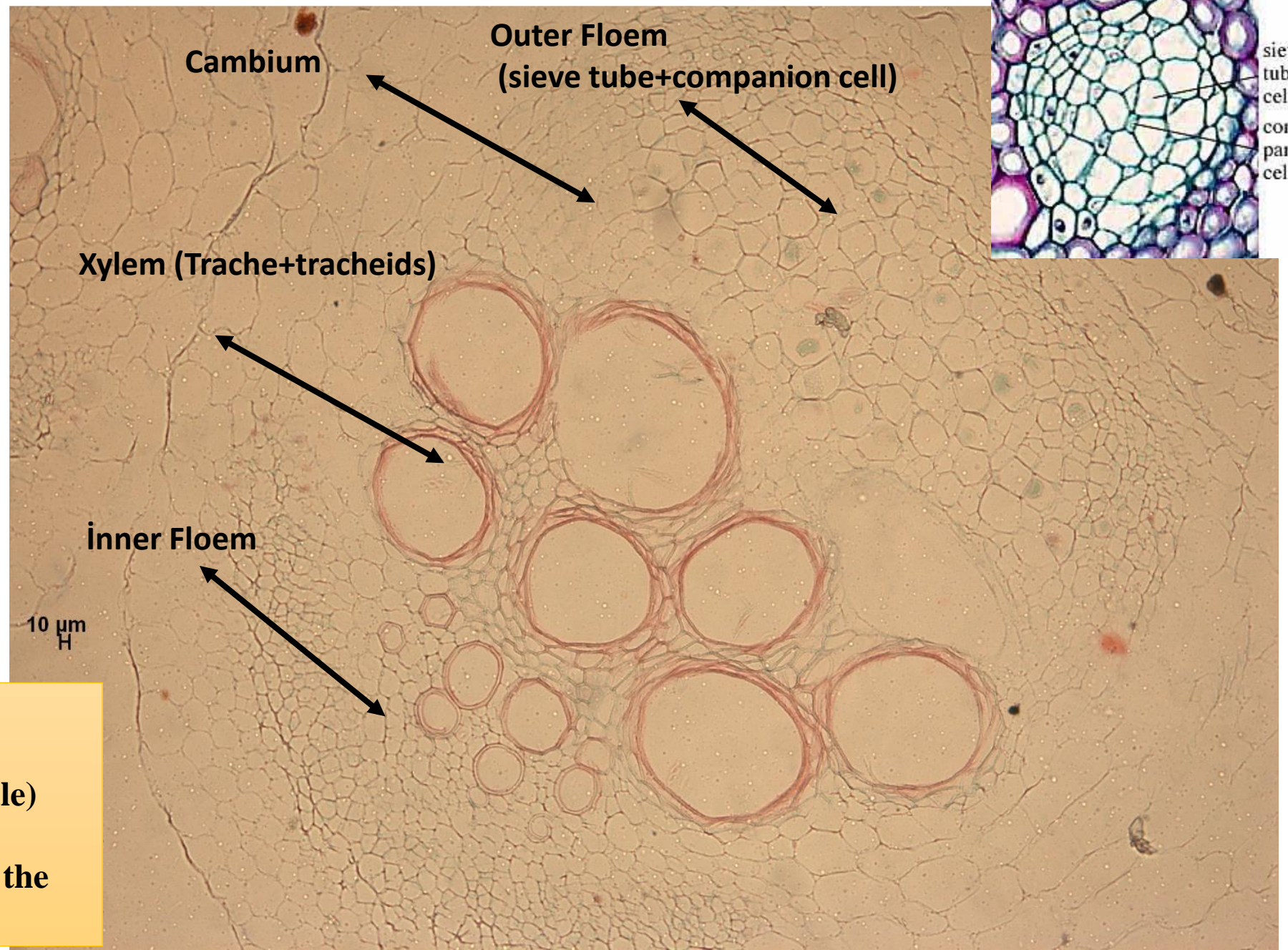
Sec.dir: **transversal section from the stem**

Subject: **Primary stem anatomy**
Sub topic: **Dicotyledone stem**
(**Bicollateral open vascular bundle**)

Sp.: *Cucurbita pepo*

Sec.dir: **transversal section**
from the young stem





Subject: **Primary stem anatomy**
Sub topic: **Dicotyledone stem
(Bicollateral open vascular bundle)**
Sp.: *Cucurbita pepo*
Sec.dir: transversal section from the
young root/Ready preparation