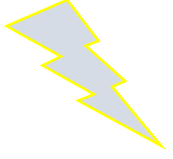


2019-2020

B.255. BİTKİ HİSTOLOJİSİ LAB.

Araş. Gör. Dr. Aydan ACAR ŞAHİN

5.hafta



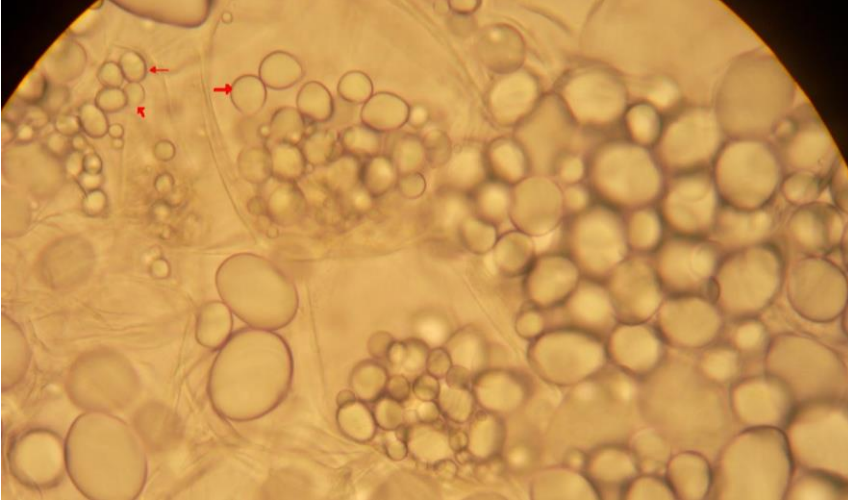
Depo Parankiması

Konu: Sürekli Dokular

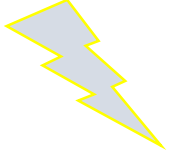
Alt konu: Temel doku, Depo parankiması

Species (sp): *Solanum tuberosum*

Kesit yönü: Yumrudan yüzeysel kesit



Nişasta taneleri



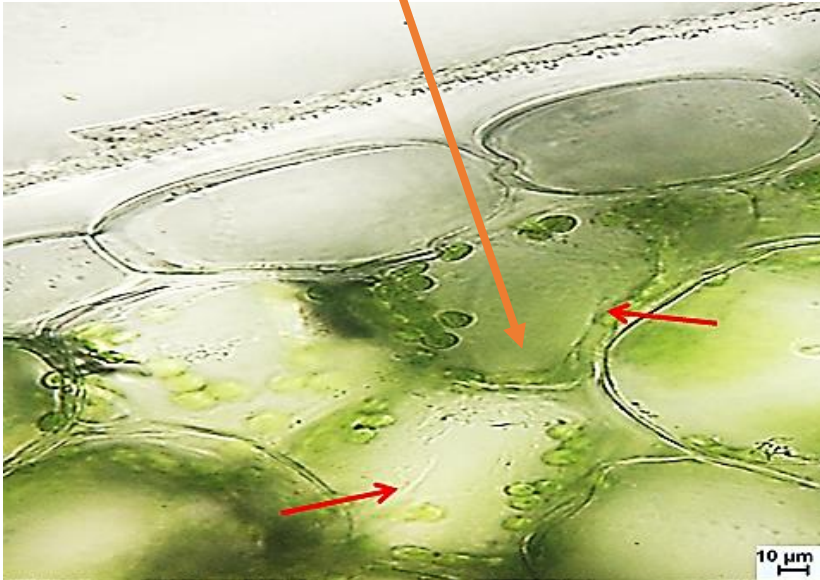
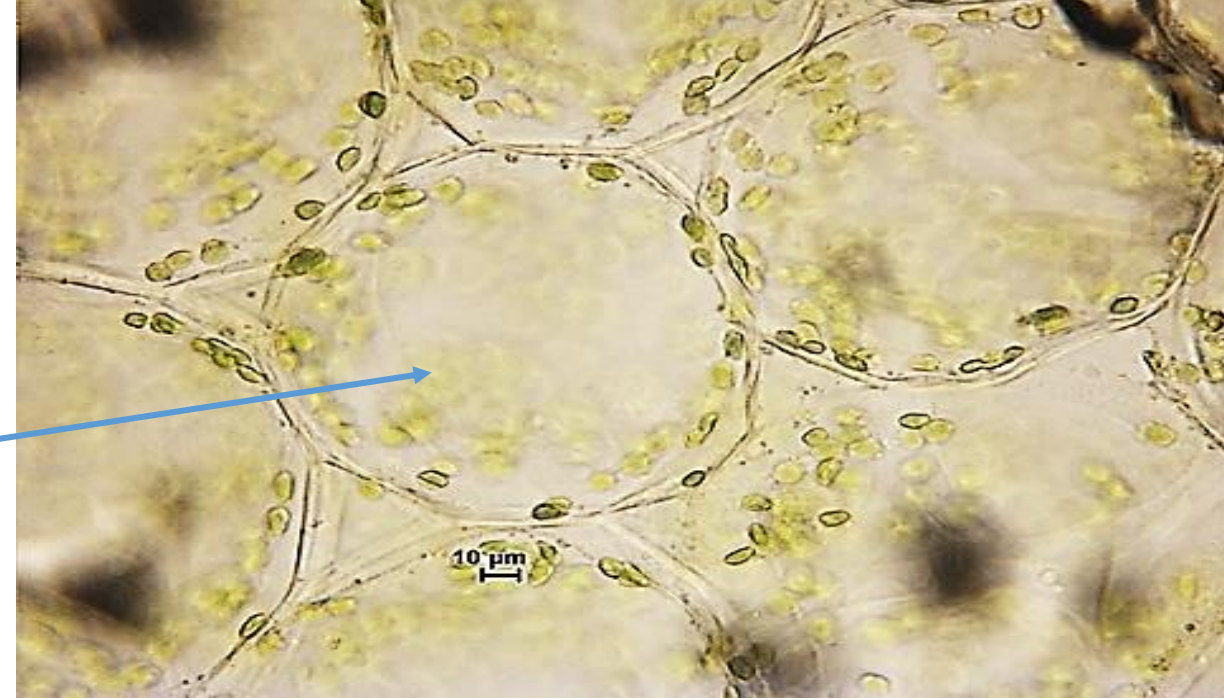
Su Depo Parankiması

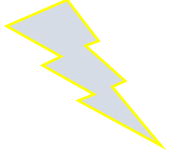
Konu: Sürekli Dokular

Alt konu: Temel doku, Su Depo parankiması

Species (sp): *Sedum sp./Aloe vera*

Kesit yönü: Yaprak enine





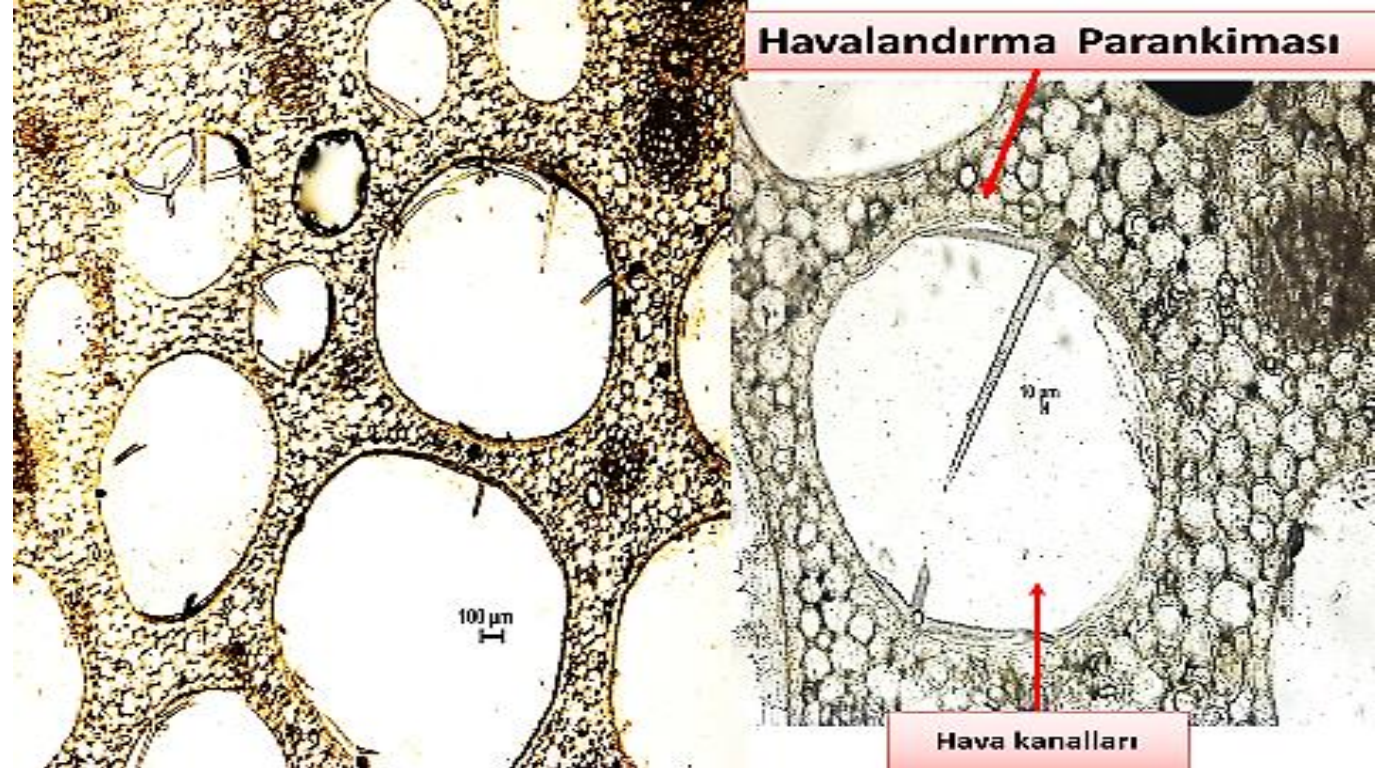
Havalandırma Parankiması

Konu: Sürekli Dokular

Alt konu: Temel doku, Havalandırma parankiması (Aerenkima)

Species (sp): *Nymphaea sp.*

Kesit yönü: Yaprak sapı enine



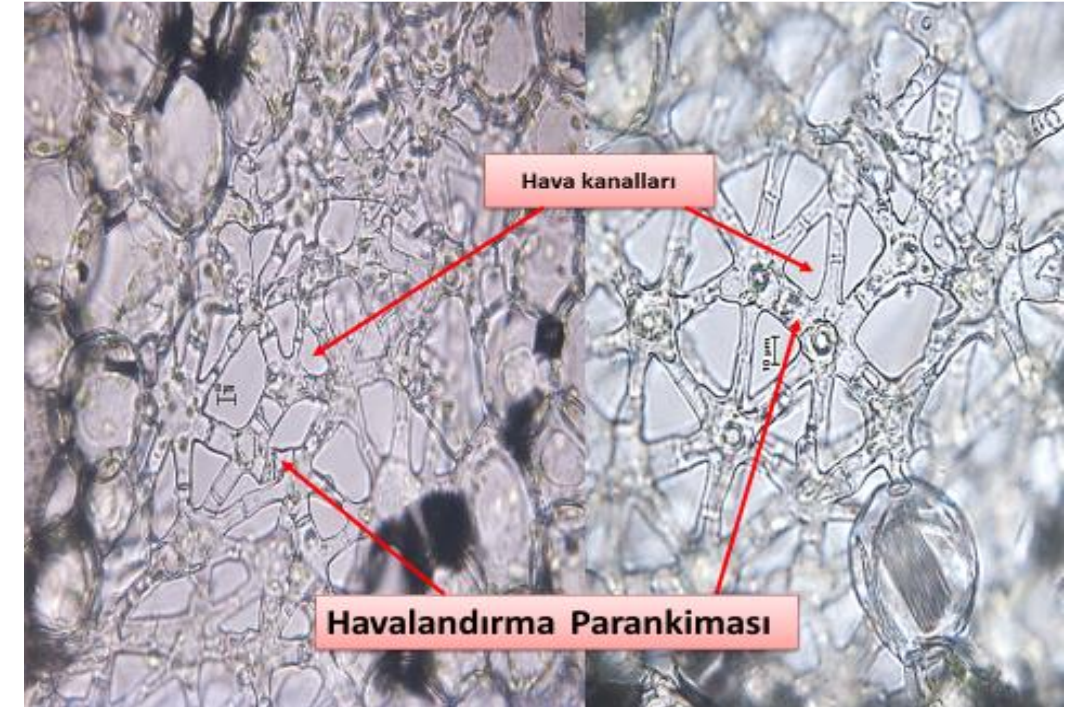
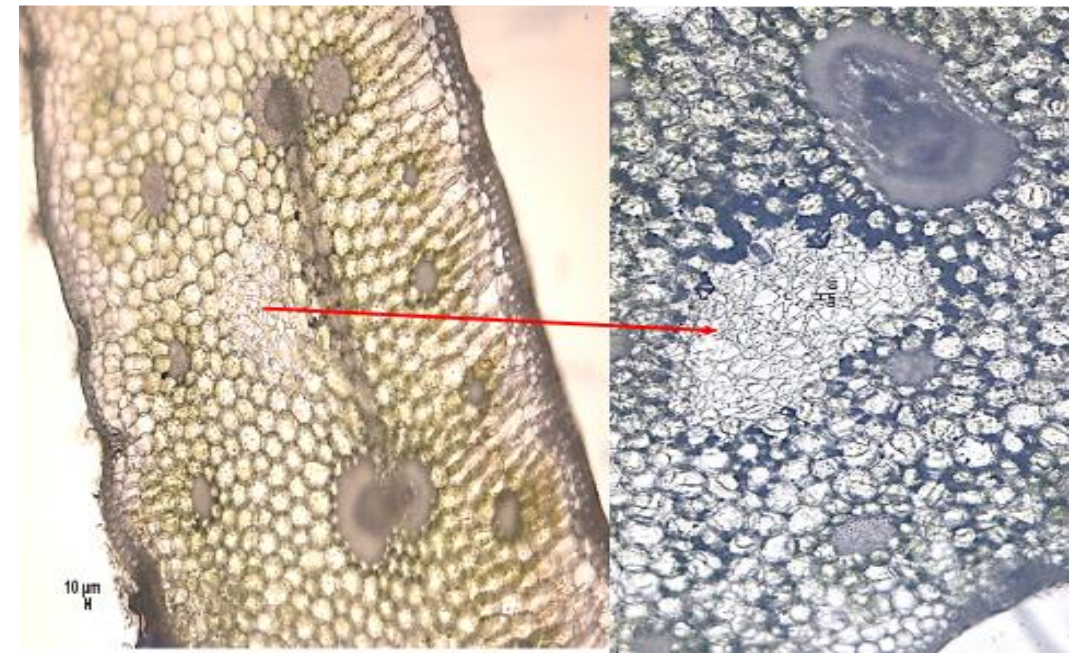
Havalandırma parankiması (yıldız/satellit parankima)

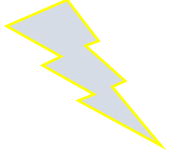
Konu: Sürekli Dokular

**Alt konu: Temel doku, Havalandırma
parankiması (Yıldız/satellit parankima)**

Species (sp): *Ananas comosum*

Kesit yönü: meyve brakte yapraklarından enine





İletken Doku Parankiması

Konu: Sürekli Dokular

Alt konu: Temel doku, İletken Doku Parankiması

Species (sp): *Zea mays*

Kesit yönü: Gövde enine

