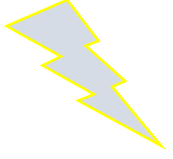


2019-2020

B.255. BİTKİ HİSTOLOJİSİ LAB.

Araş. Gör. Dr. Aydan ACAR ŞAHİN

7.hafta



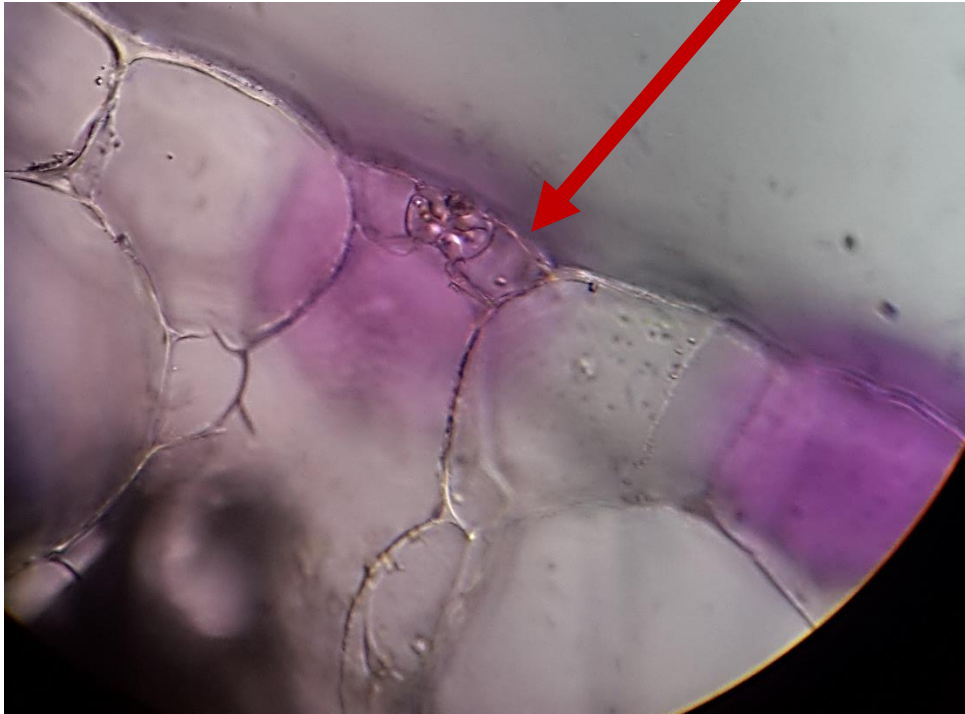
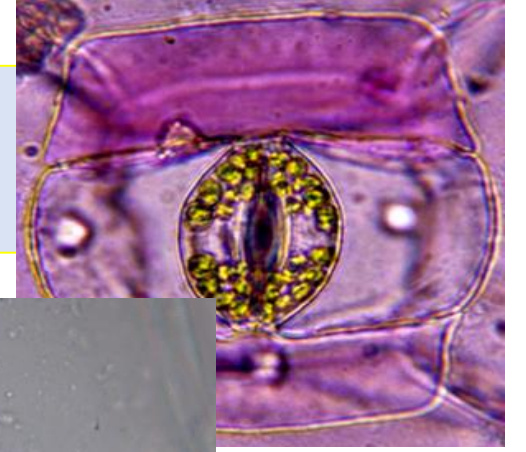
Amaryllis tipi stoma

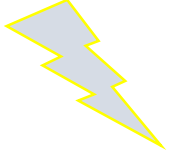
Konu: Sürekli Dokular

Alt konu: Hücre Çeperi Mantarlaşmamış Örtü doku, Amaryllis tipi stoma

Species (sp): *Rhoeo discolor*

Kesit yönü: Yaprak alt yüzeysel ve enine





Gramineae tipi stoma

Konu: Sürekli Dokular

Alt konu:Hücre Çeperi Mantarlaşmamış Örtü doku, Gramineae tipi stoma

Species (sp): *Cyperus sp*

Kesit yönü: Yaprak alt yüzeysel ve enine

