

2019-2020

B.256. BİTKİ MORFOLOJİSİ LAB.

Araş. Gör. Dr. Aydan ACAR ŞAHİN

2. hafta

1.

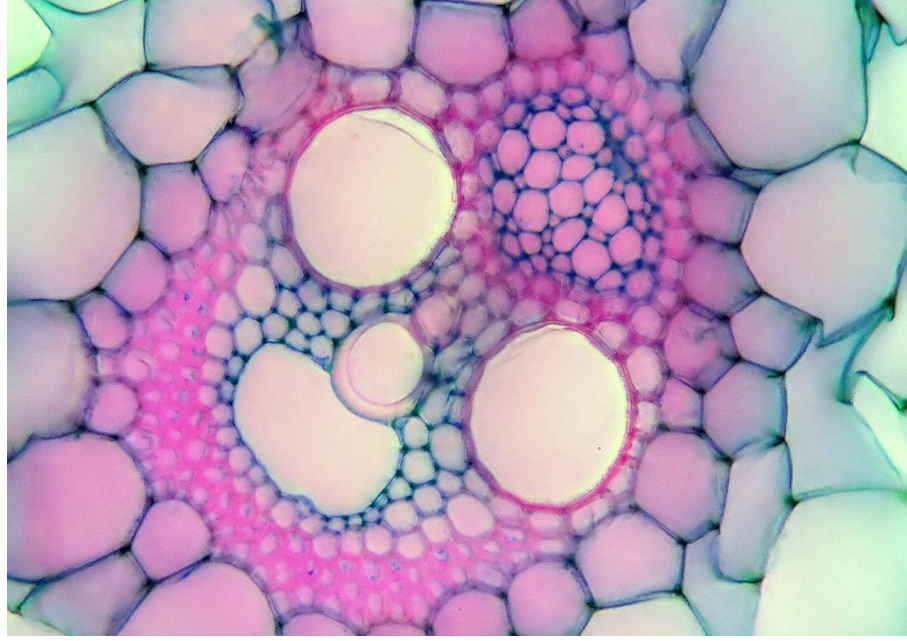
KONU: GÖVDENİN PRİMER YAPISI

ALT KONU: MONOKOTİL GÖVDE

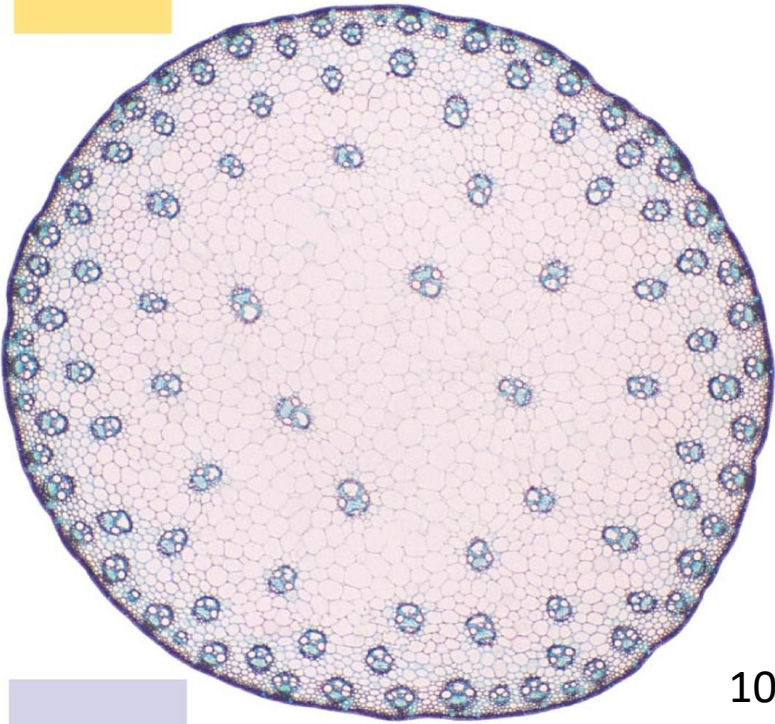
(KAPALI KOLLATERAL İLETİM
DEMETİ)

SPECİES: *Cyperus sp./ Zea mays*

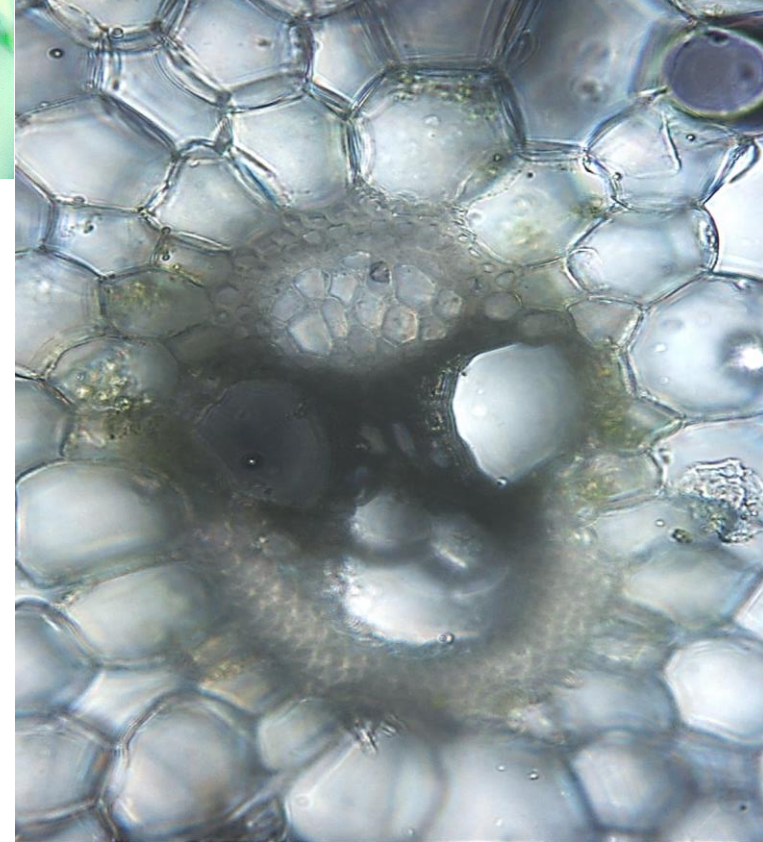
KY: Gövde enine



10x40



10x4



2.

KONU: GÖVDENİN PRİMER YAPISI

ALT KONU: DİKOTİL GÖVDE

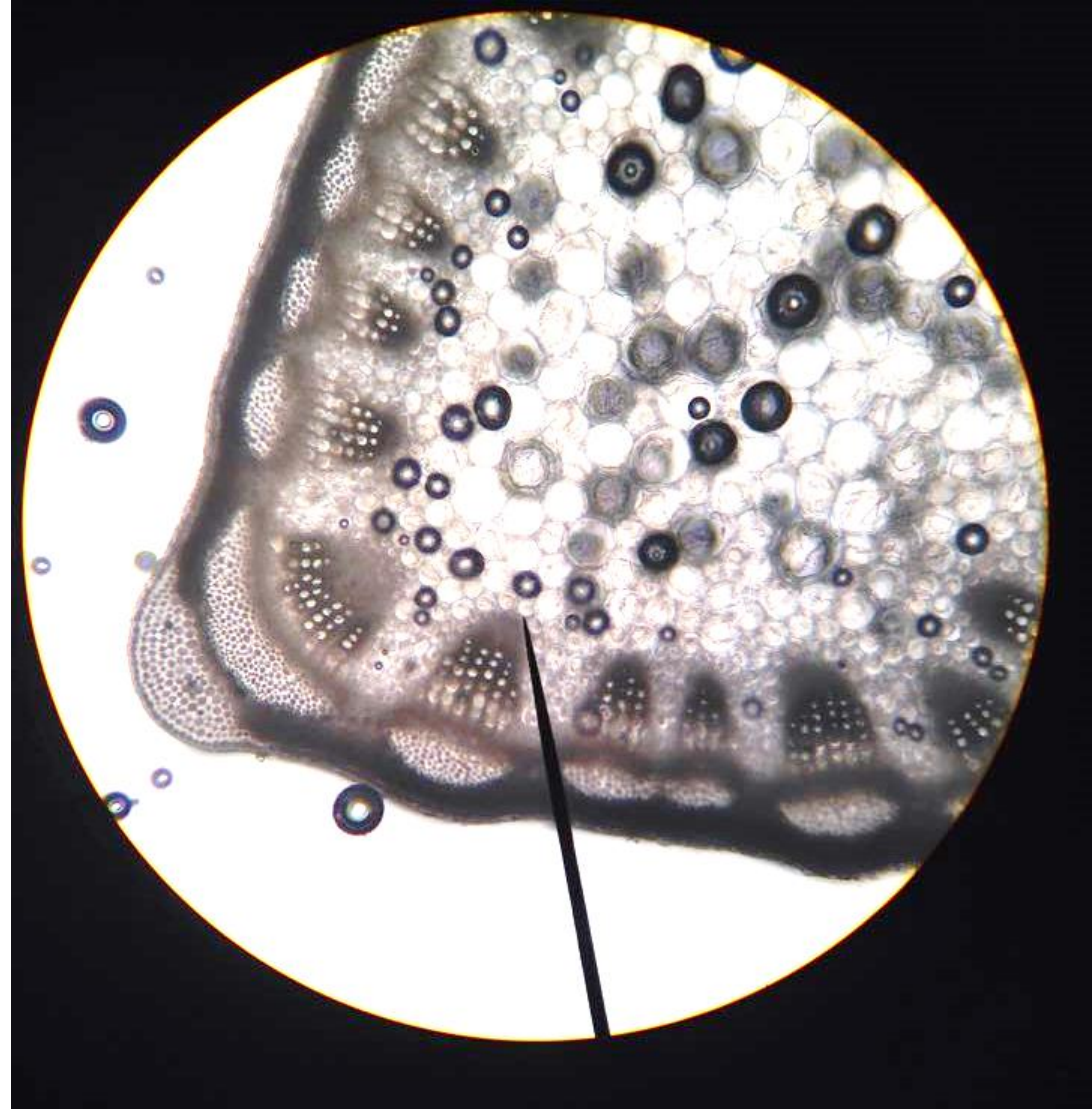
(AÇIK KOLLATERAL İLETİM DEMETİ)

SPECİES: *Aristolochia sp.* / *Medicago sp.*

KY: Gövde enine

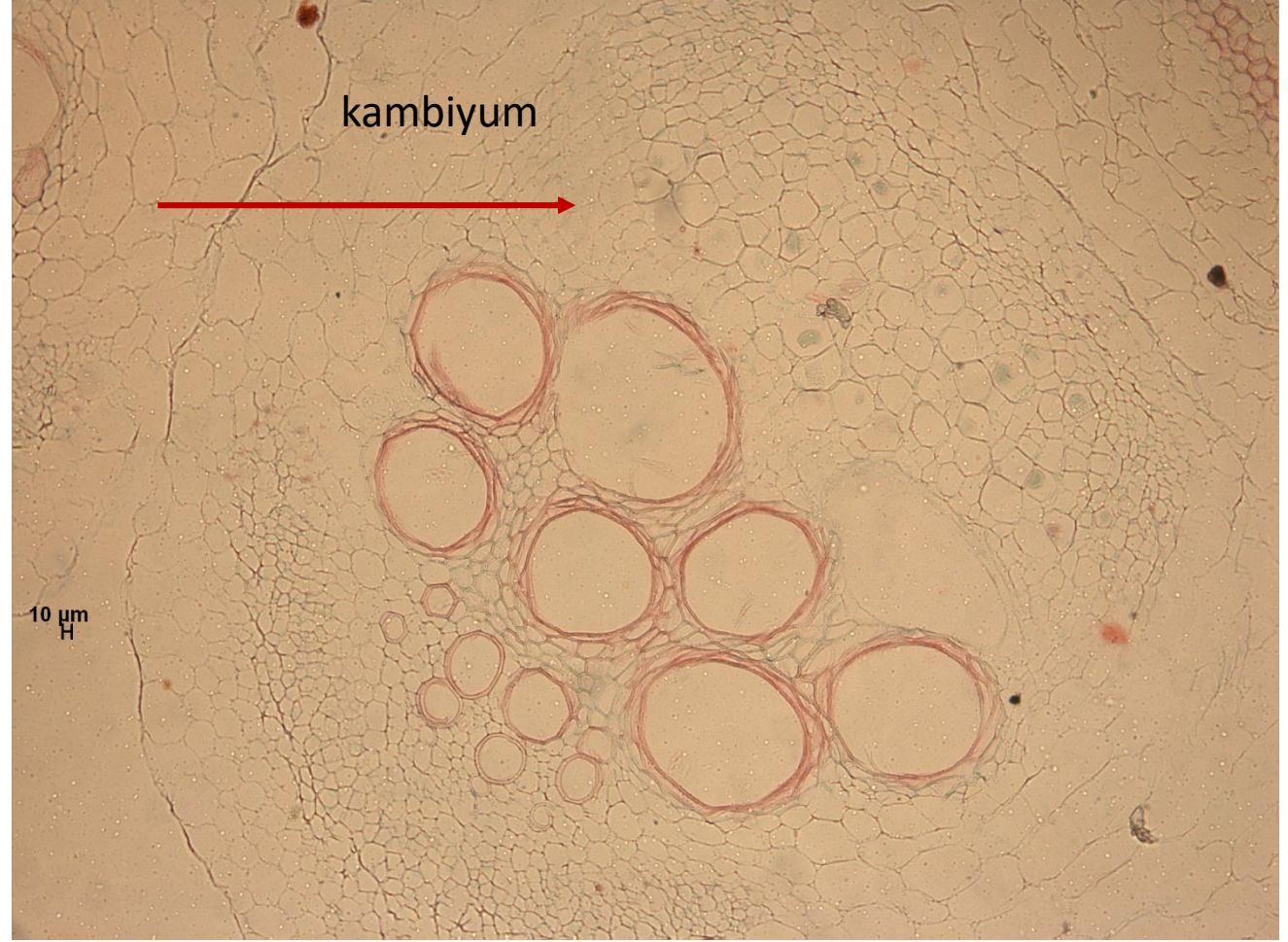
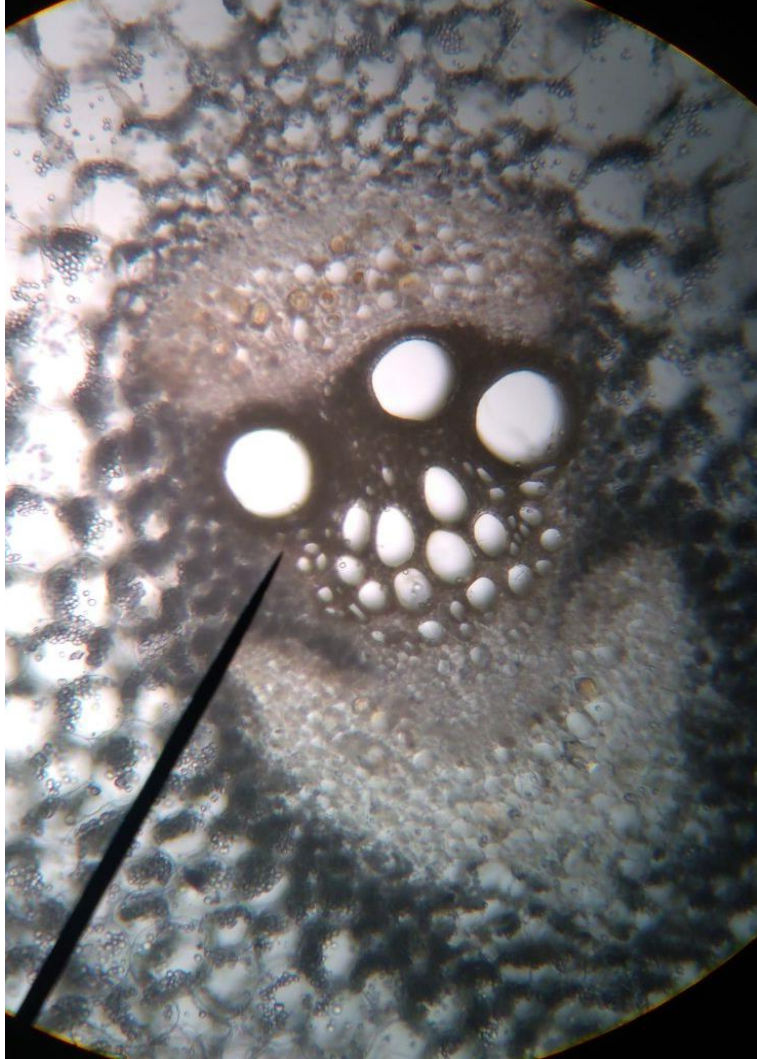


10x40



10x10

3. KONU: GÖVDENİN PRİMER YAPISI
ALT KONU: DİKOTİL GÖVDE
(AÇIK BİKOLLATERAL İLETİM DEMETİ)
SPECİES: *Cucurbita pepo*
KY: Gövde enine



10x10