

2019-2020

B.256. BİTKİ MORFOLOJİSİ LAB.

Araş. Gör. Dr. Aydan ACAR ŞAHİN

10.hafta

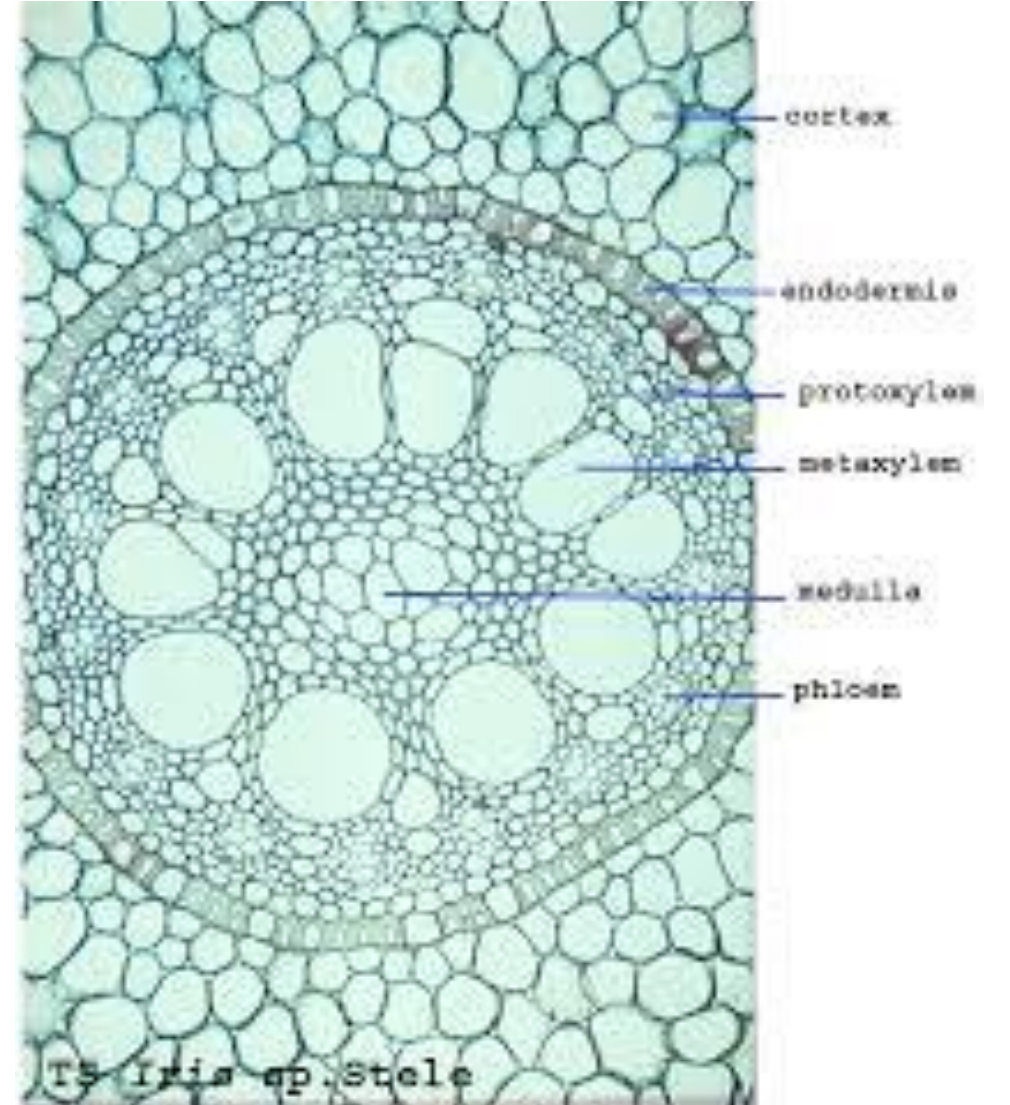
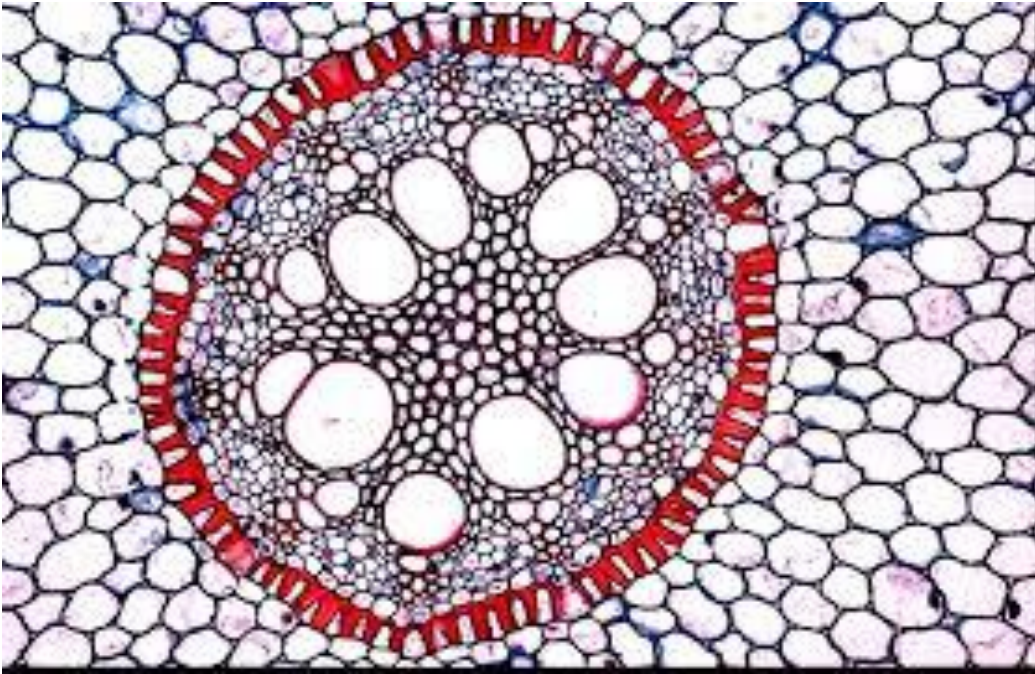
Monokotil kök

KONU: Kökün primer yapısı

ALT KONU: Monokotil Kök, Poliark ksilem kolu

SPECİES: *Iris* sp.

KY: Kök enine



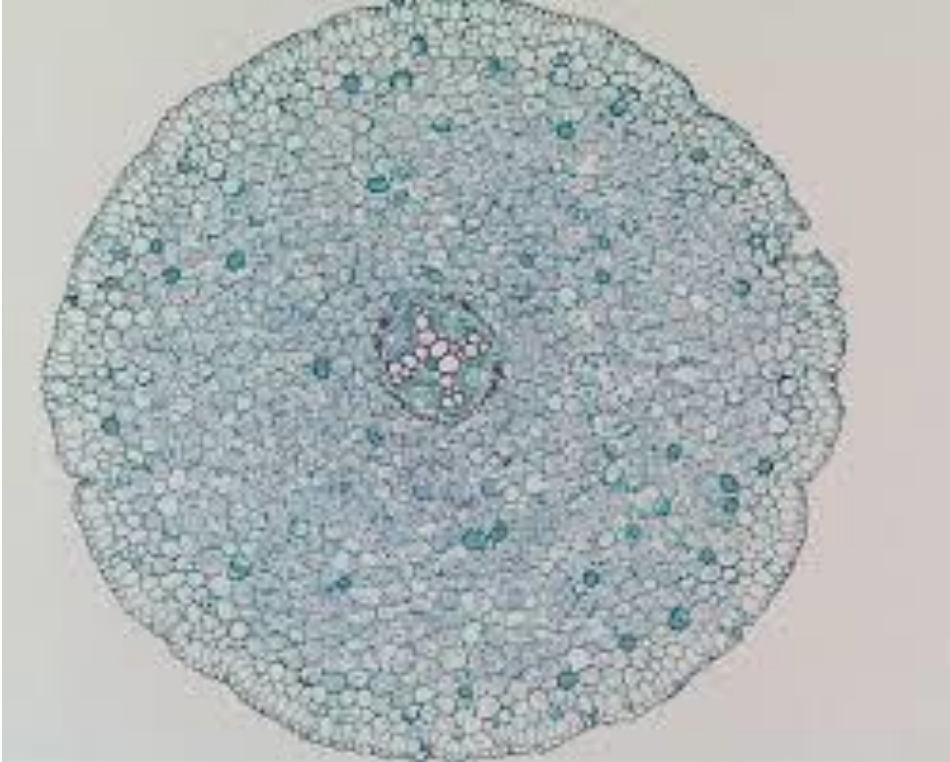
Dikotil kök

KONU: Kökün primer yapısı

ALT KONU: Dikotil Kök, tetraark/pentaark ksilem kolu

SPECİES: *Ranunculus* sp.

KY: Kök enine



A Cross Section through the Region of Maturation of a Root of a Buttercup (*Ranunculus* – a Dicot)

