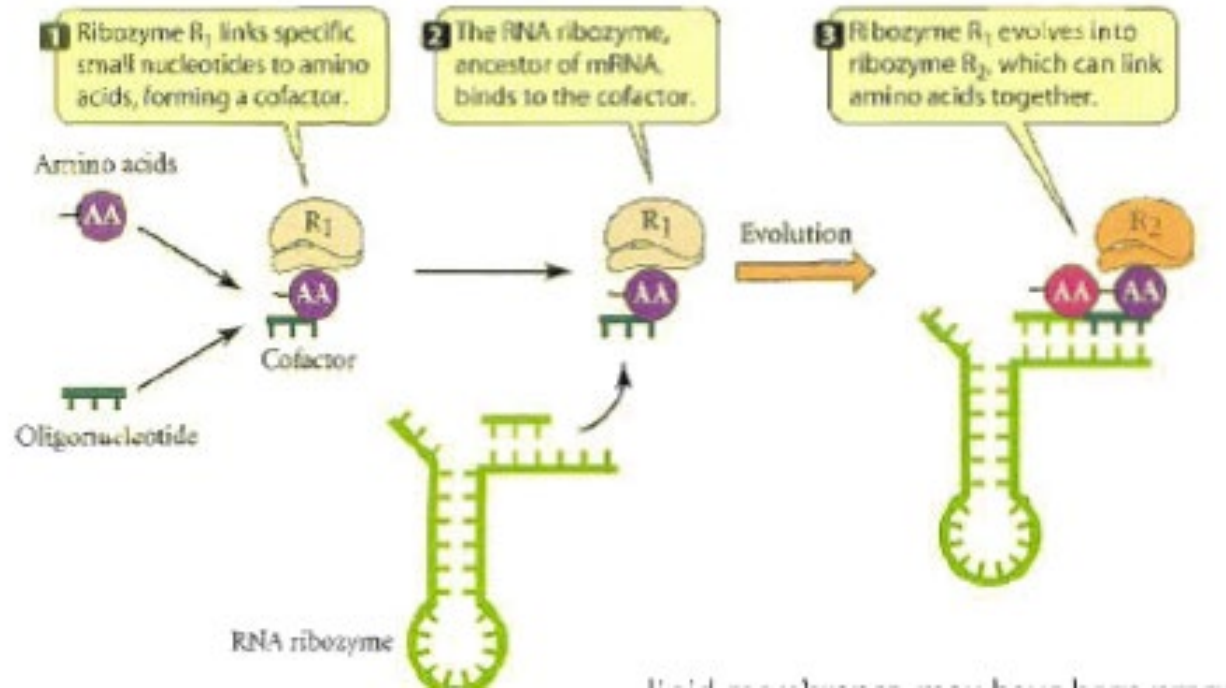
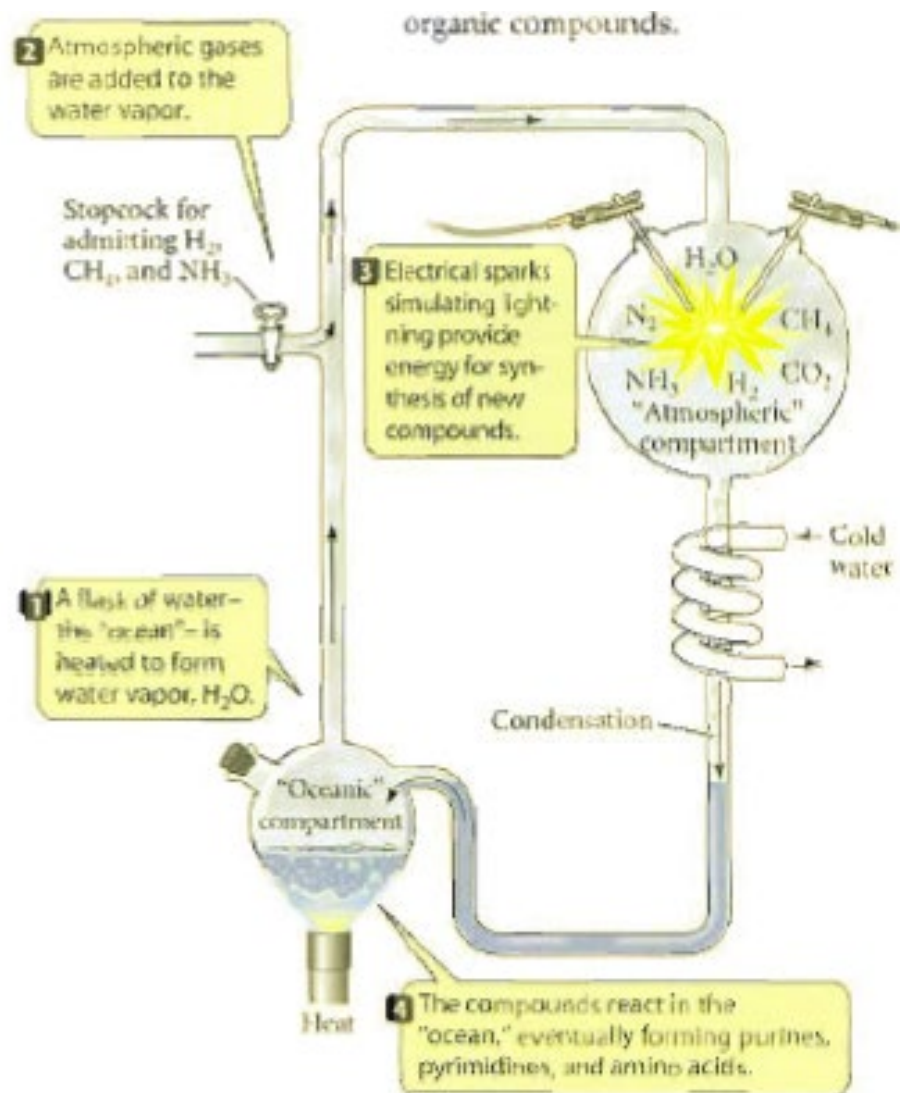
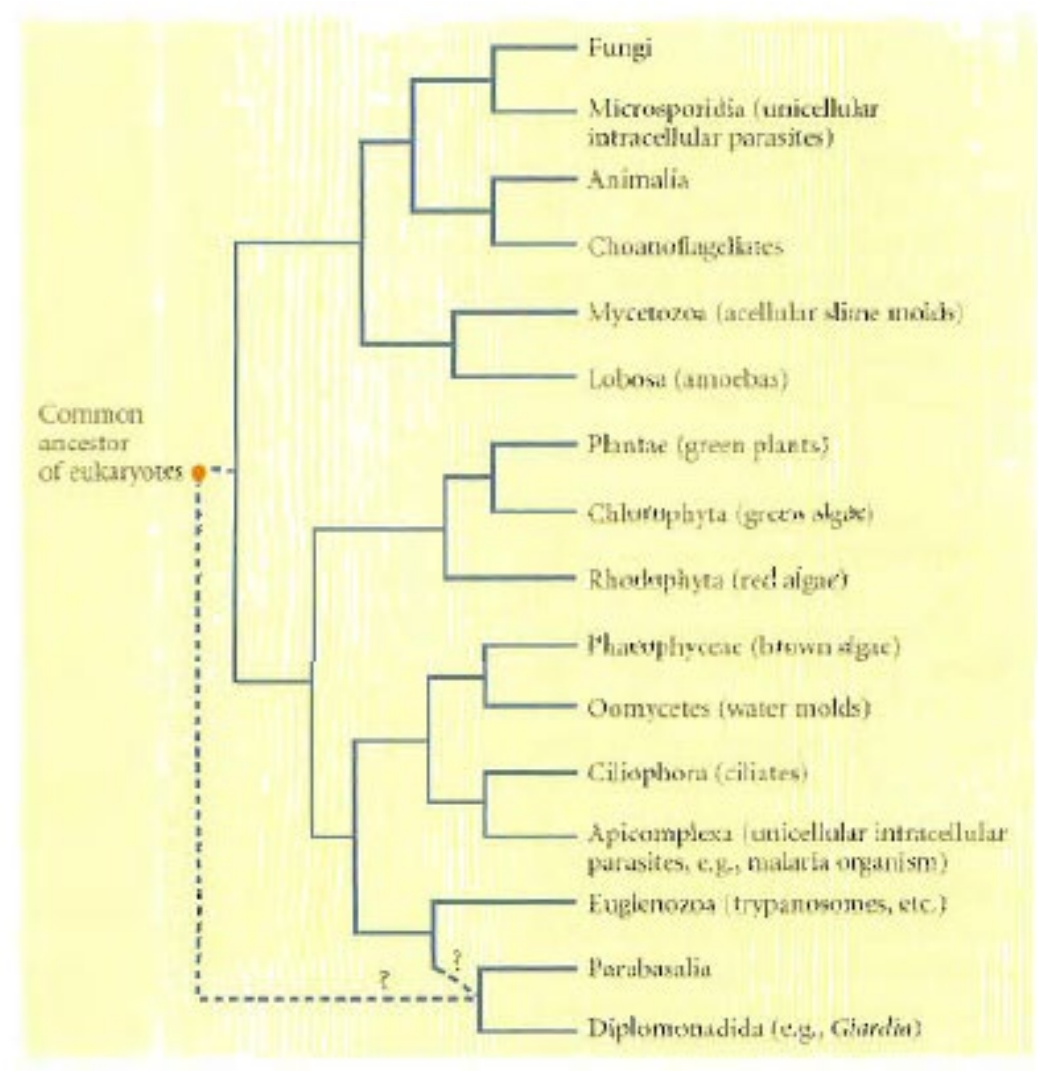
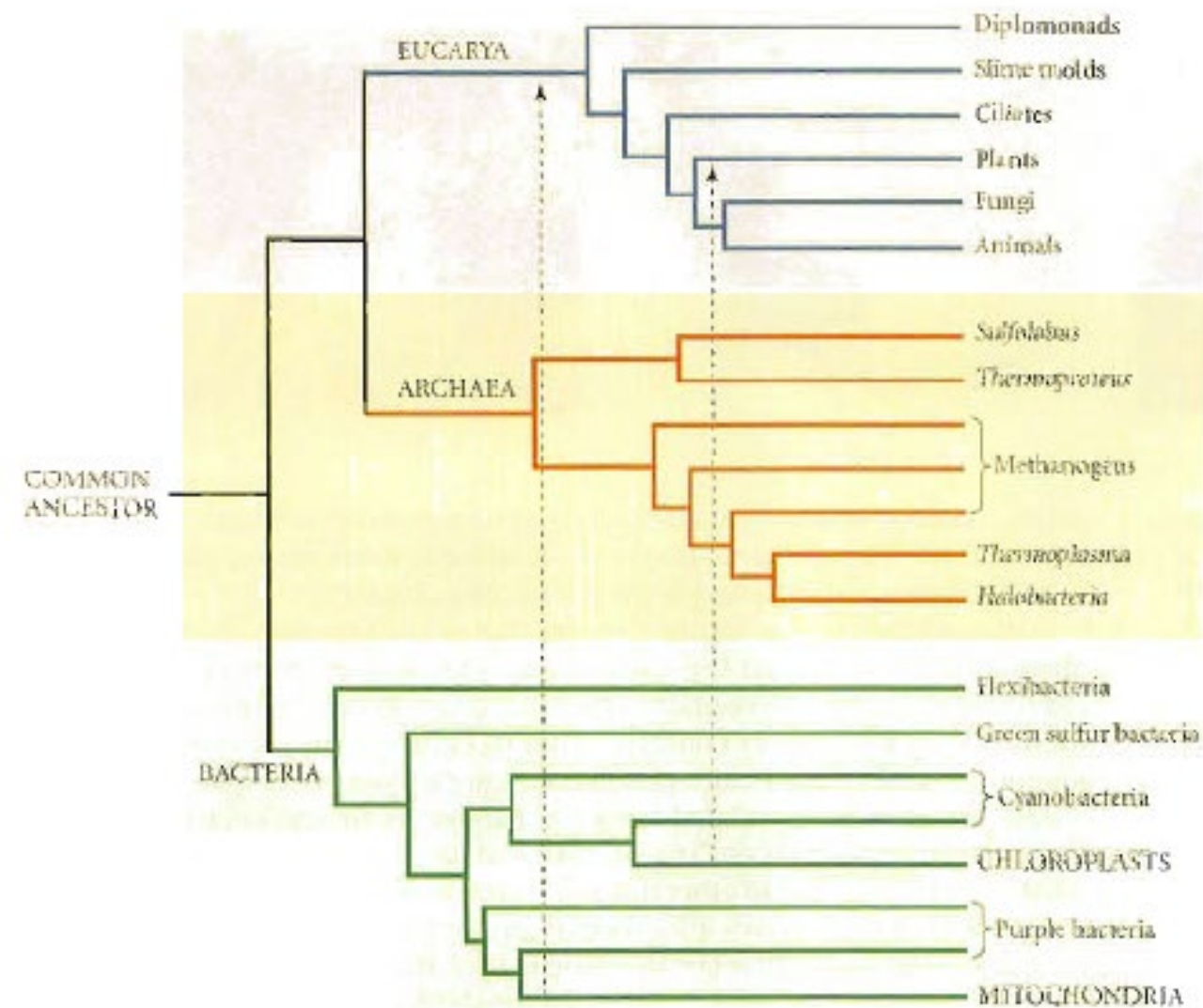


5. Yerkürede Yaşamın Tarihi





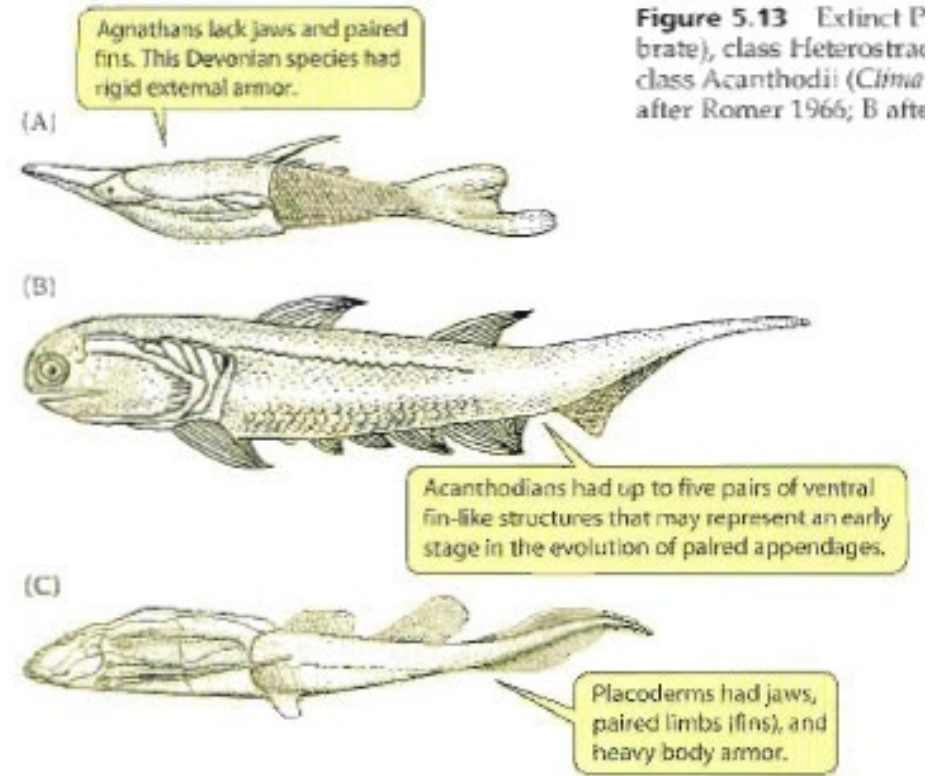
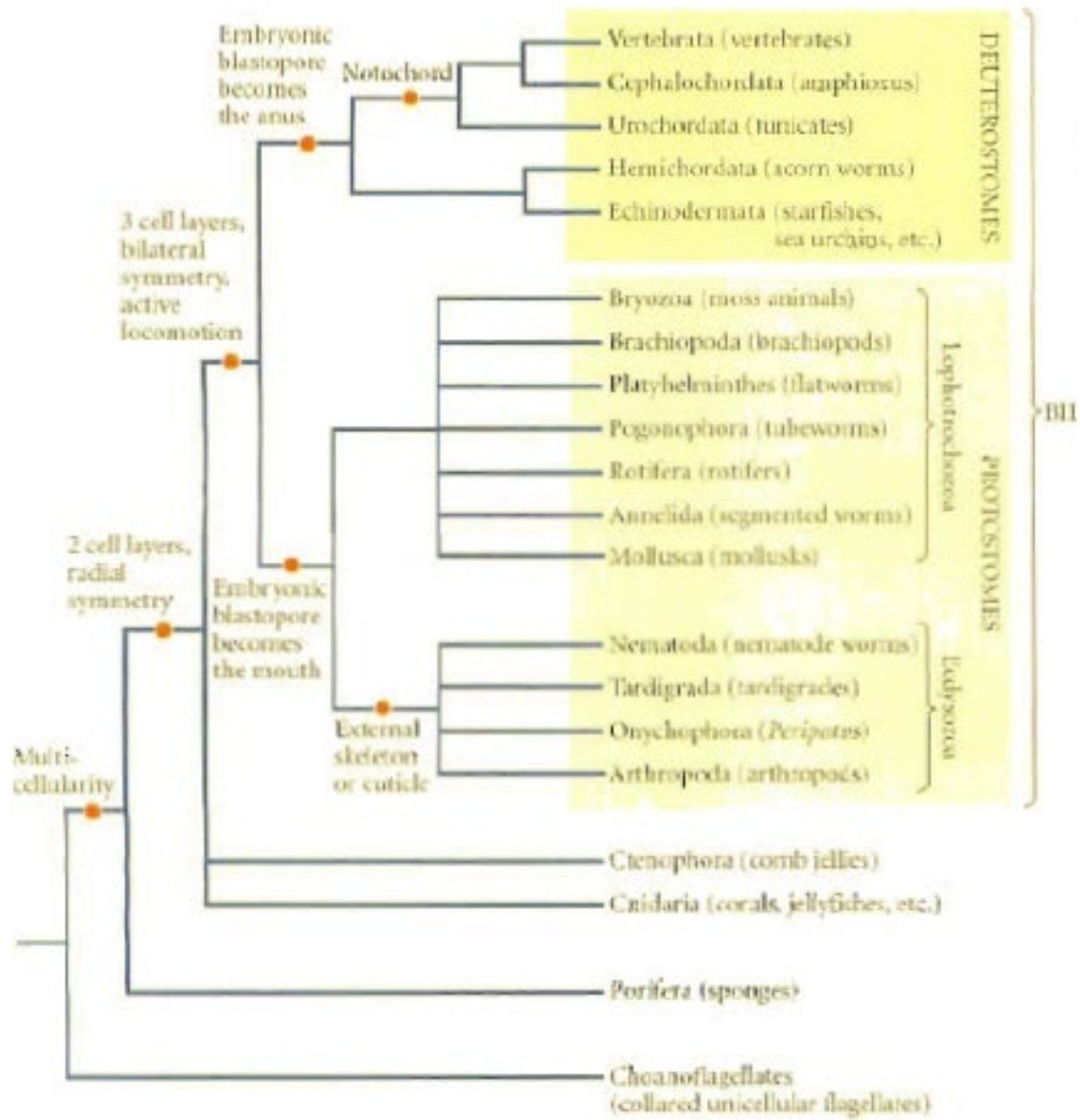
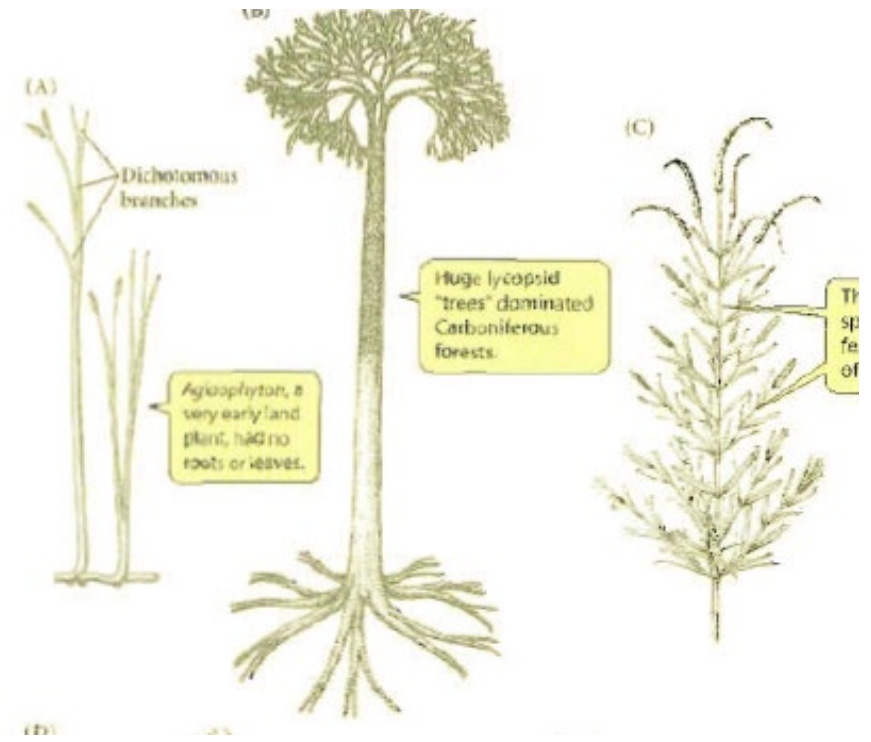
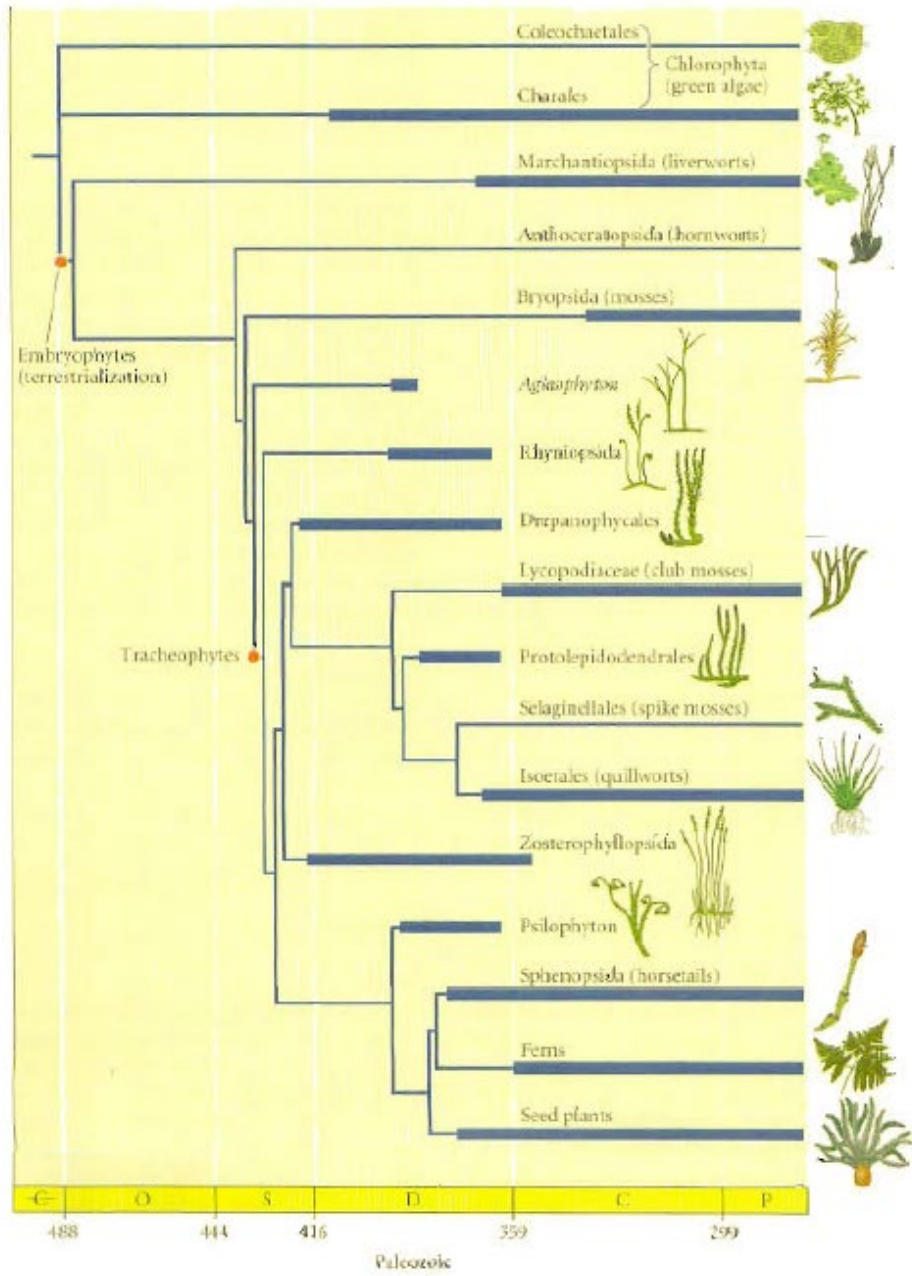
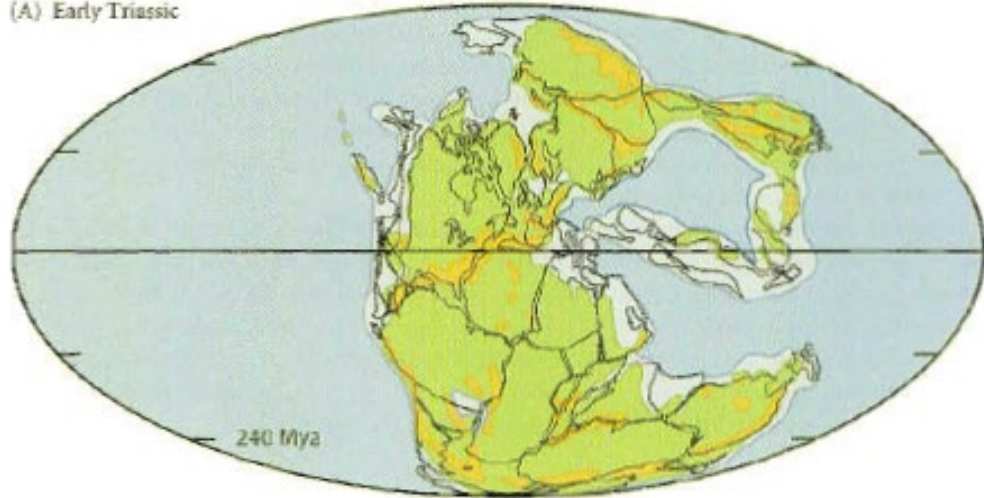


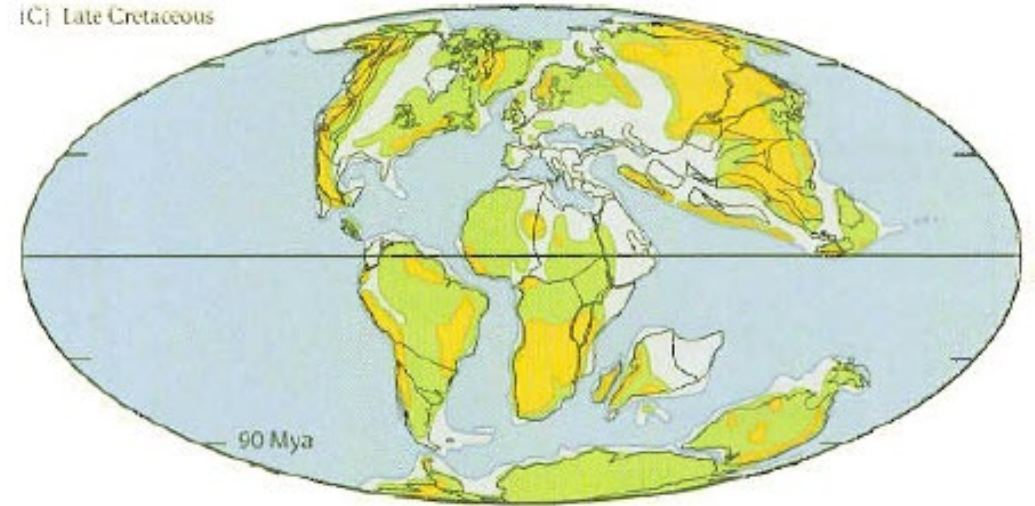
Figure 5.13 Extinct Protostome (A), class Heterostraci (B), class Acanthodii (*Climacopterus* after Romer 1966; B after Romer 1966; C after Romer 1966)



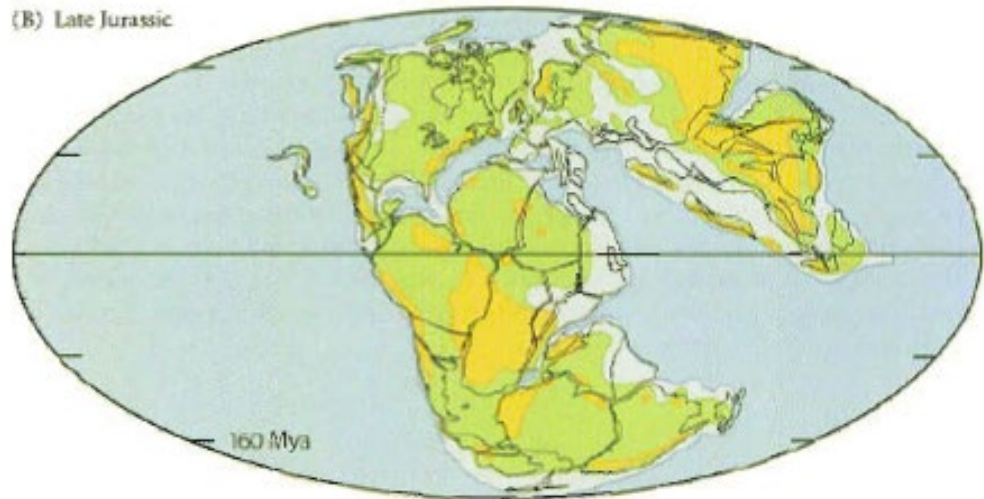
(A) Early Triassic



(C) Late Cretaceous



(B) Late Jurassic



(D) Late Oligocene

