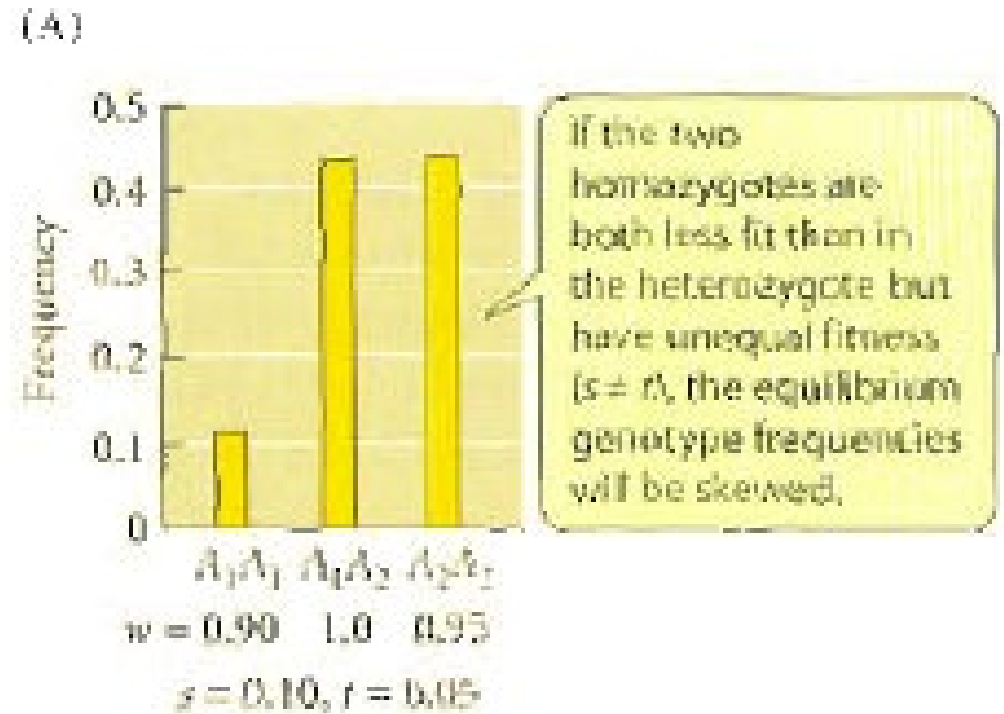
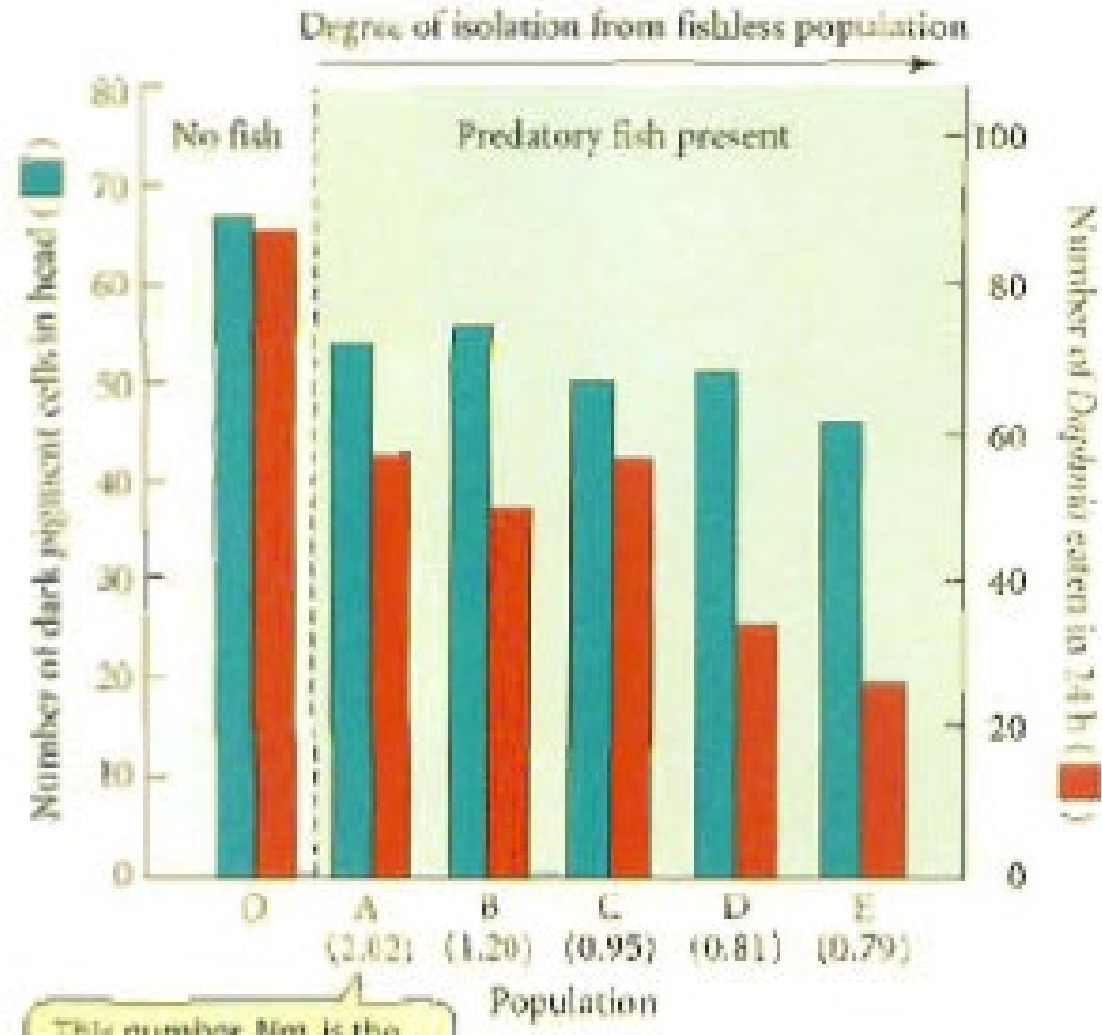
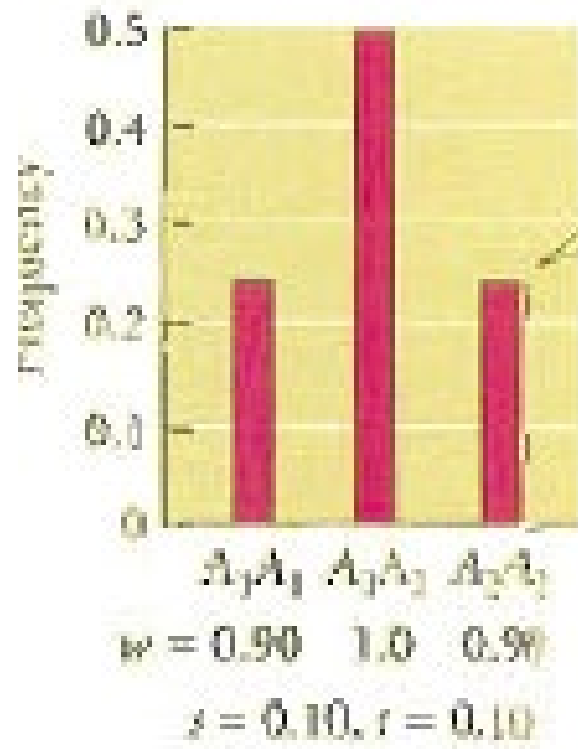


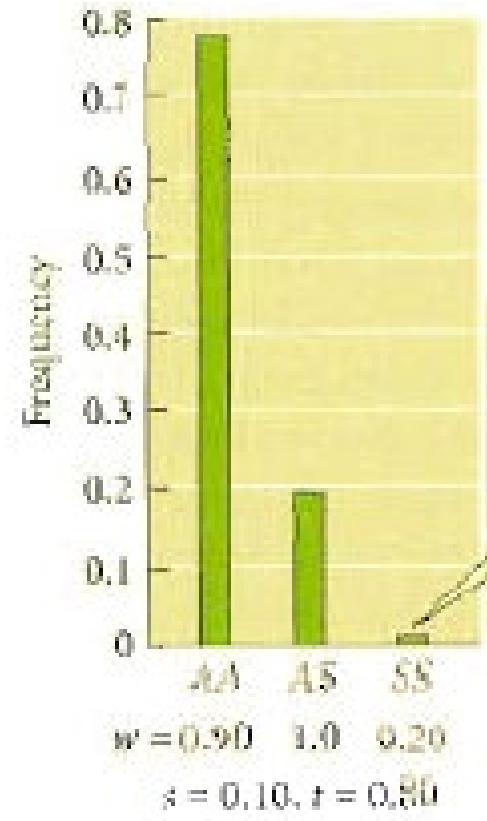
12. Dođal Seilimin Genetik Kuramı



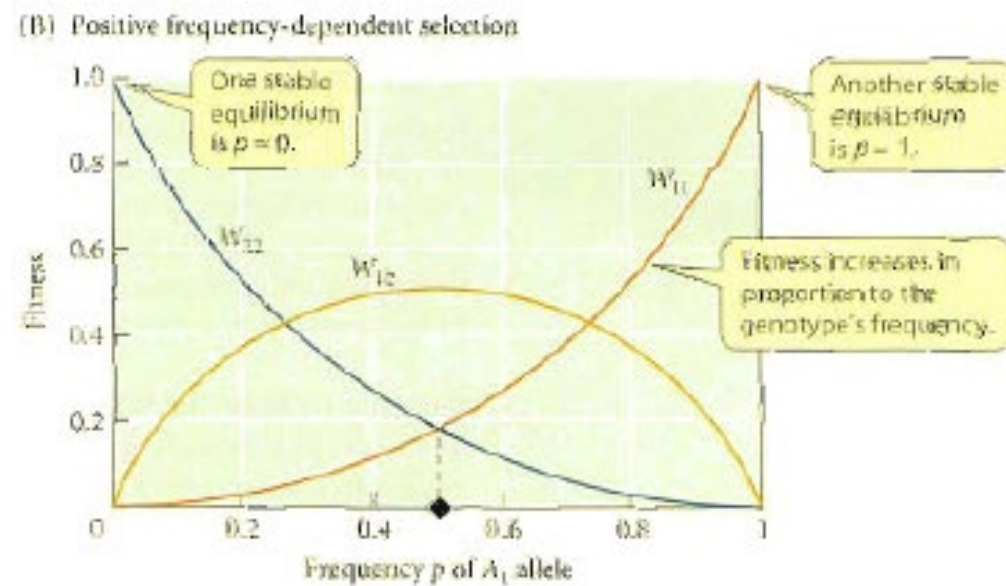
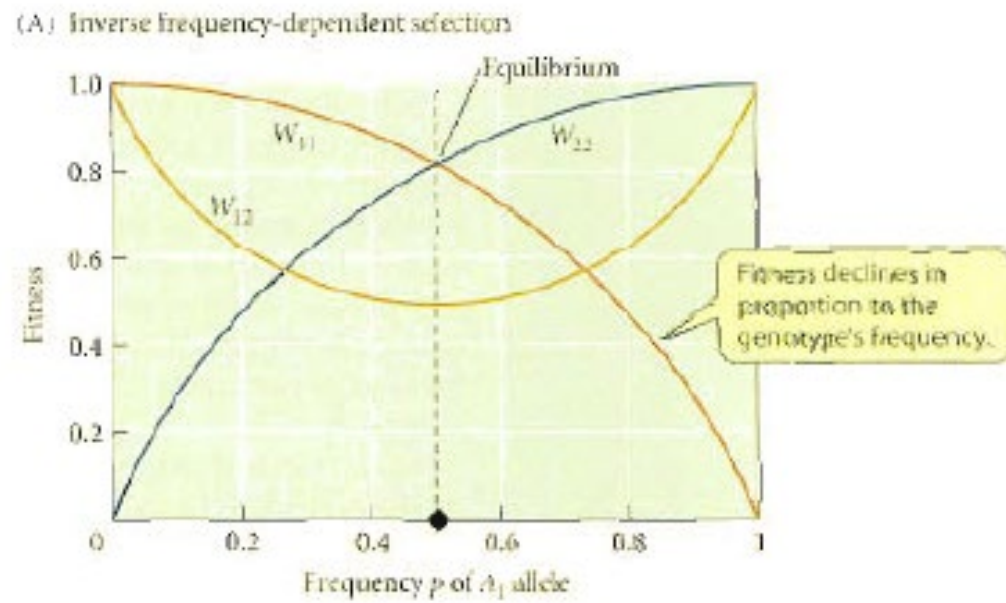
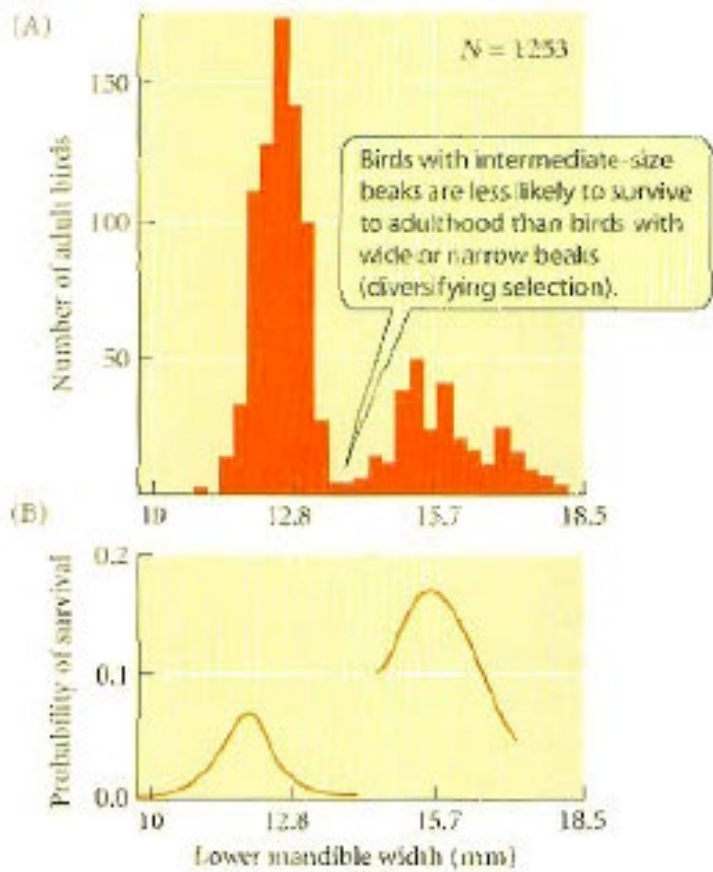


If both homozygotes are less fit than the heterozygote to the same extent ($s = t$), they both will have a frequency of 0.25 at equilibrium.

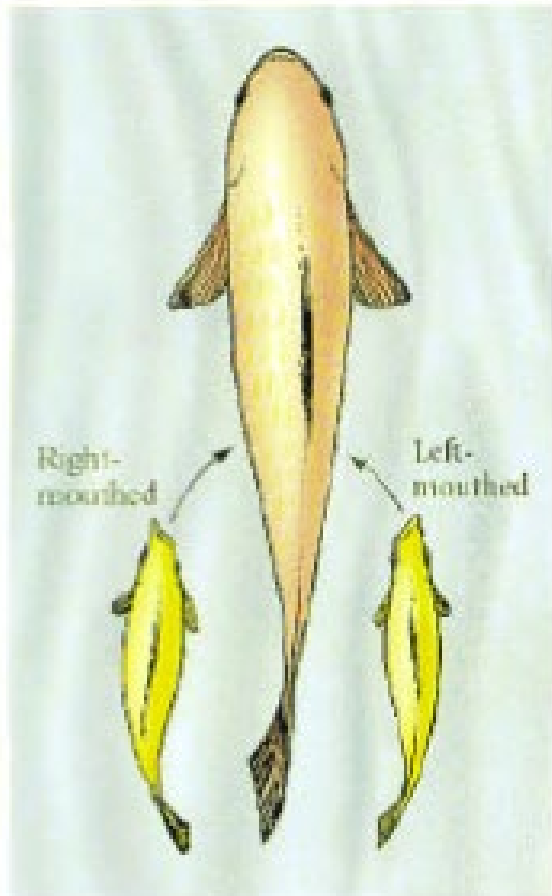
(B)



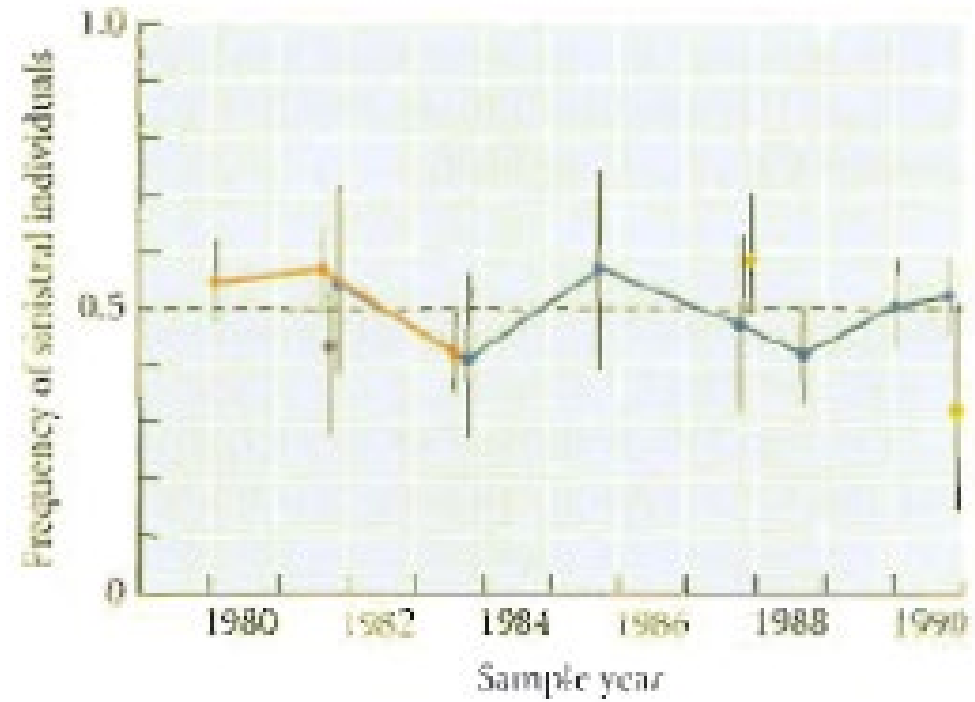
Where sickle-cell heterozygotes ("carriers") have highest fitness, homozygotes, affected by sickle-cell disease, persist in the population at a low frequency.

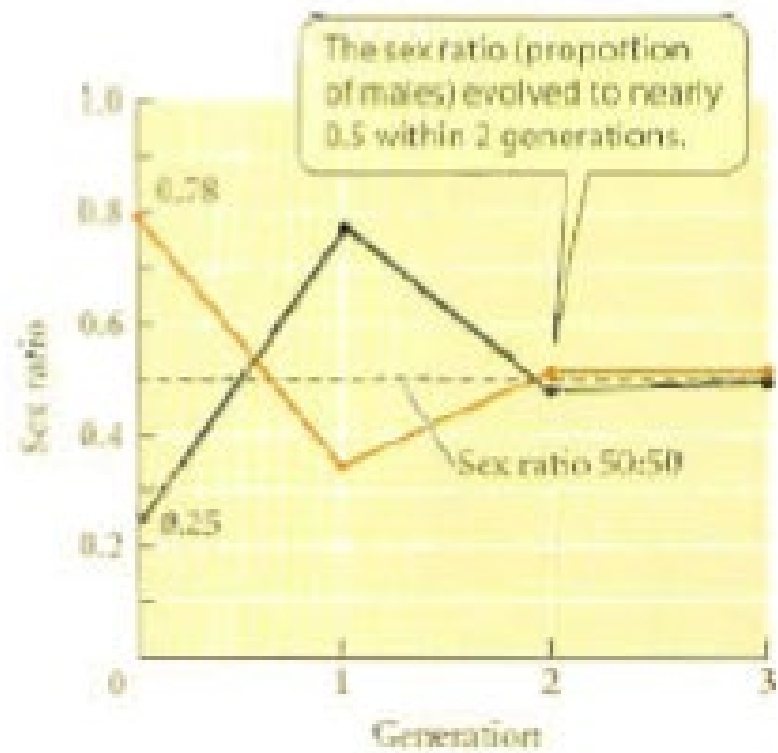
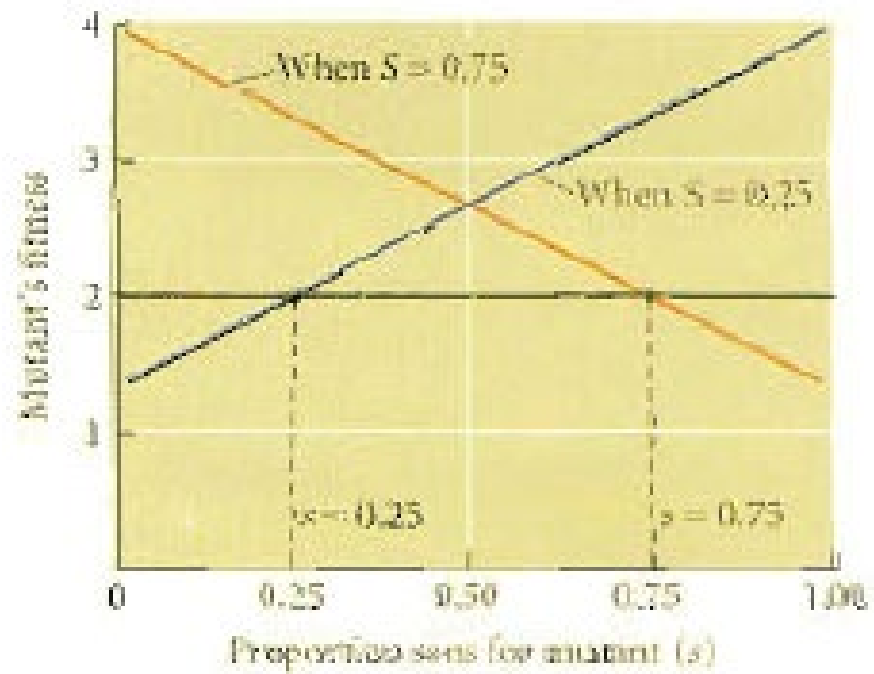


(A)

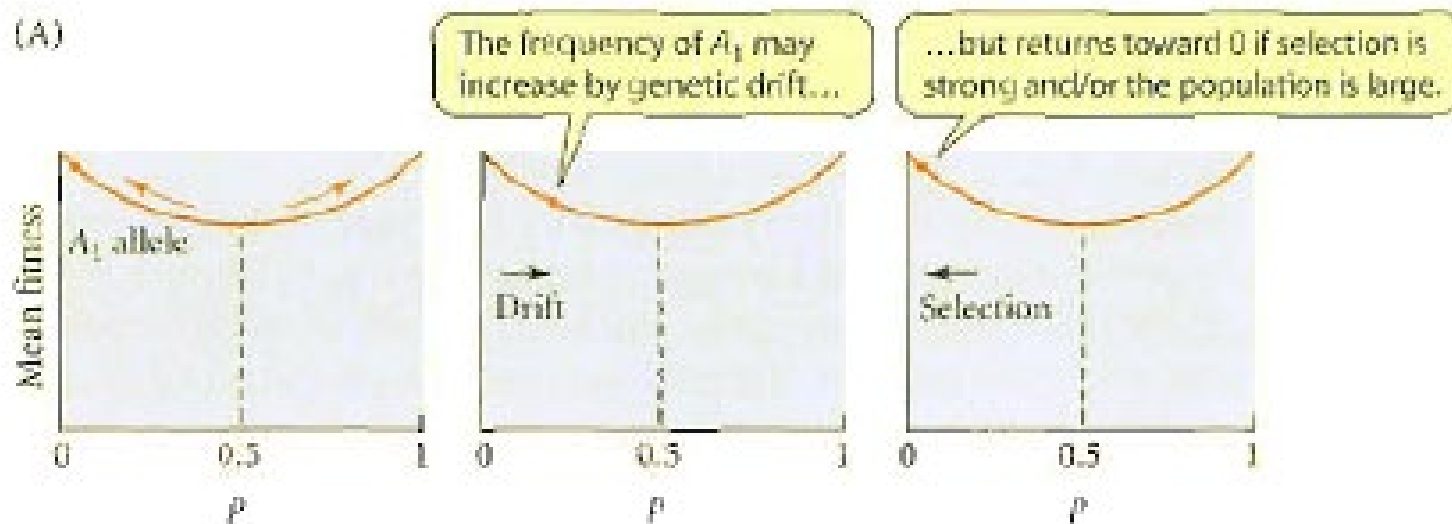


(B)

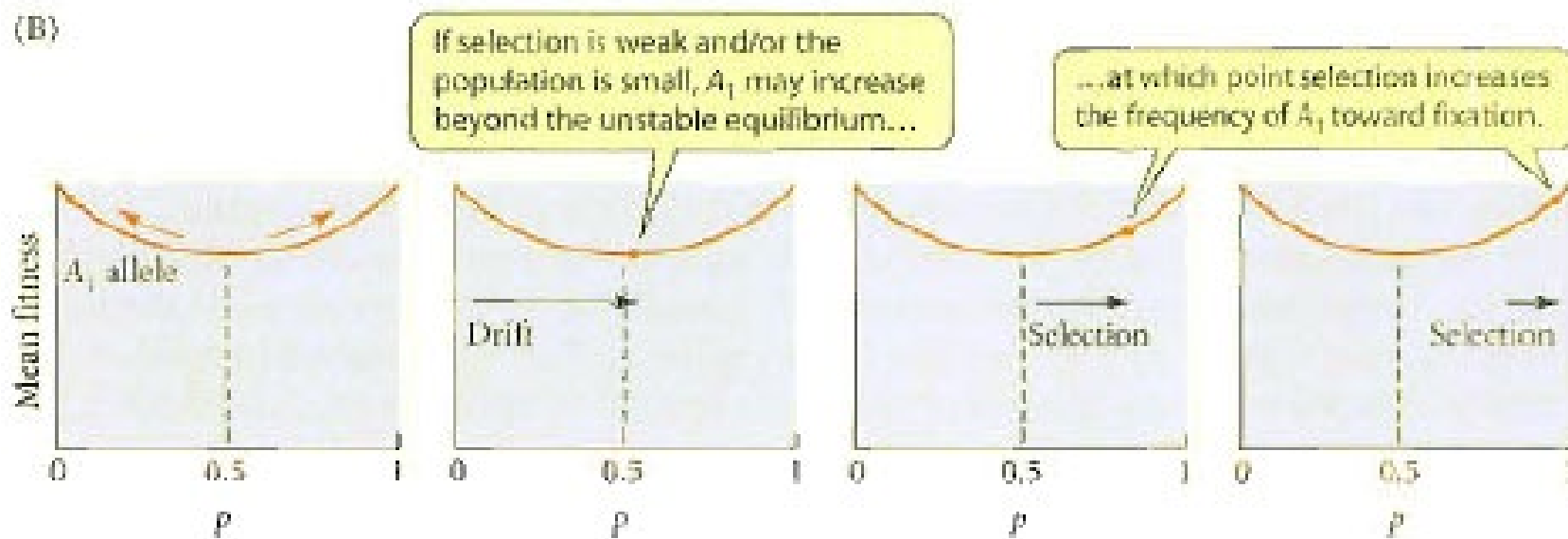


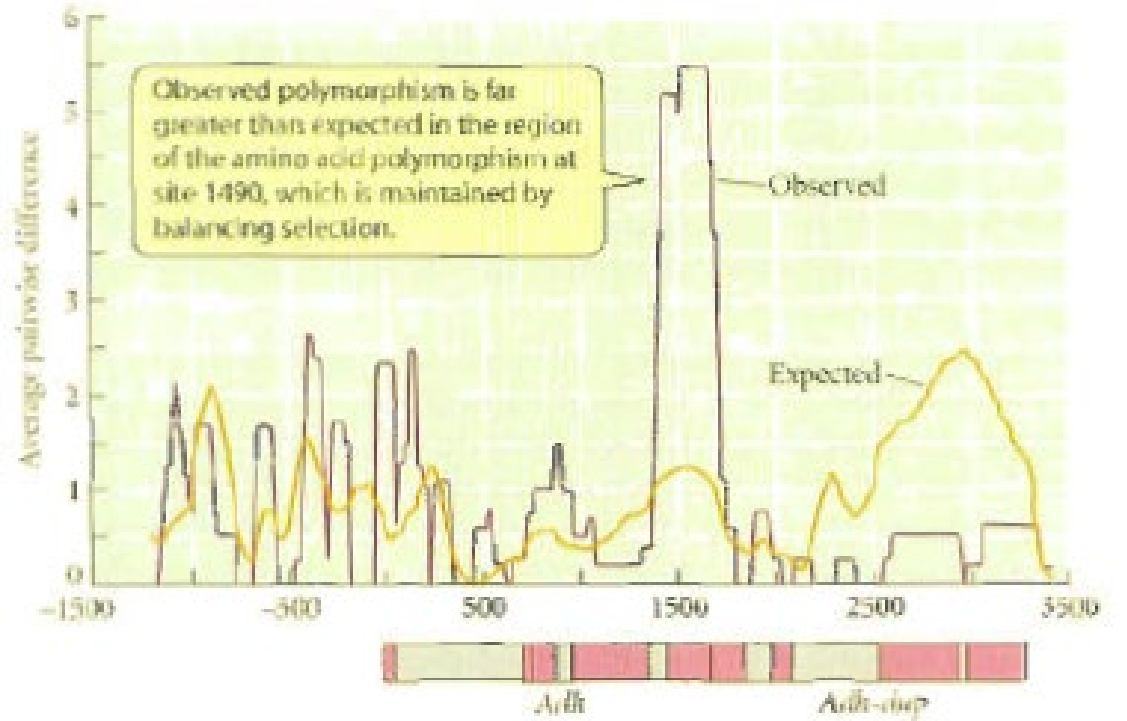
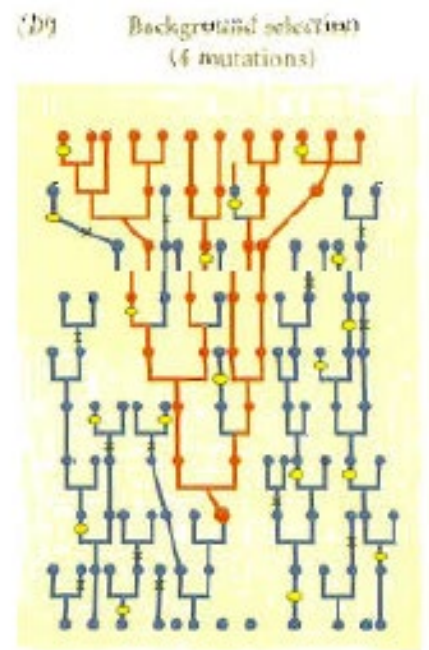
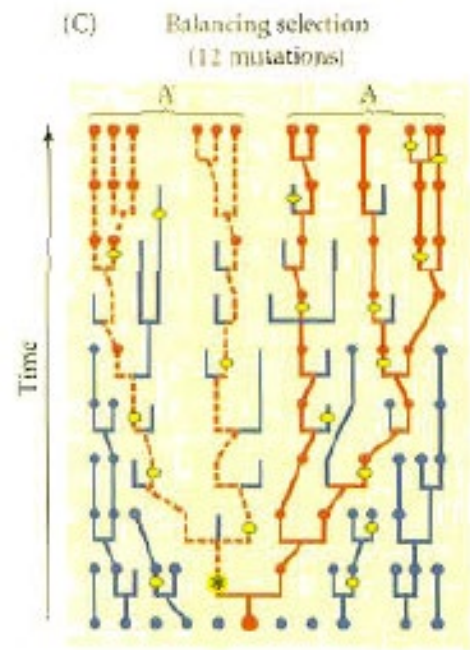
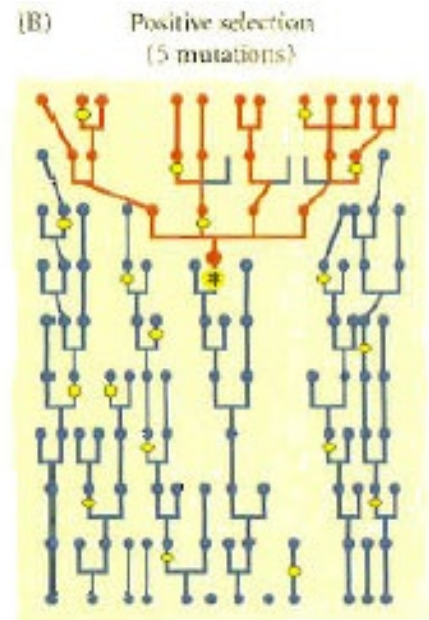
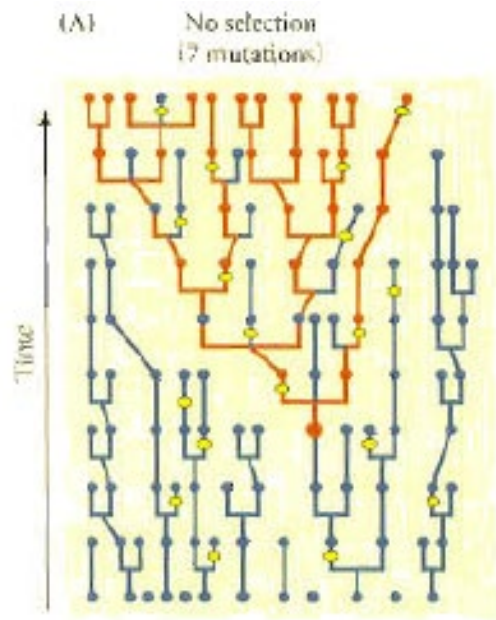


(A)

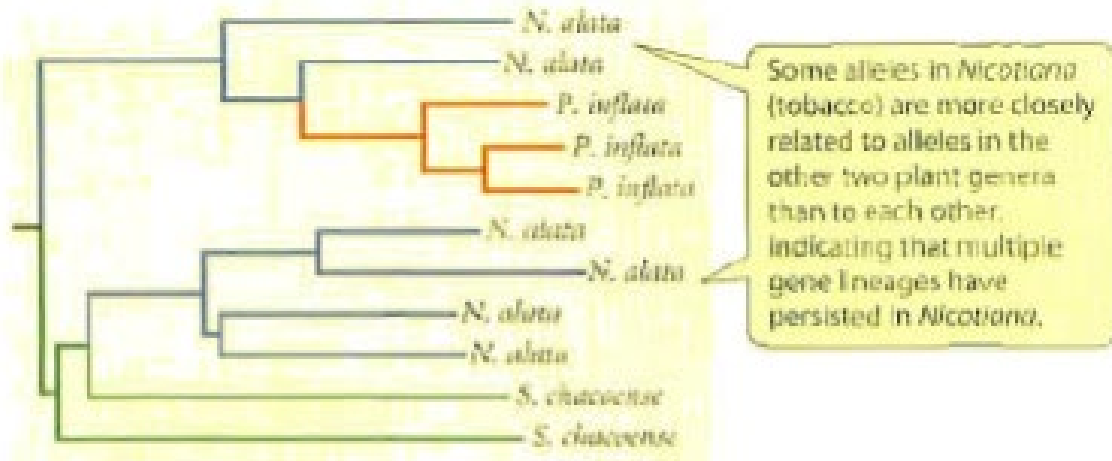


(B)

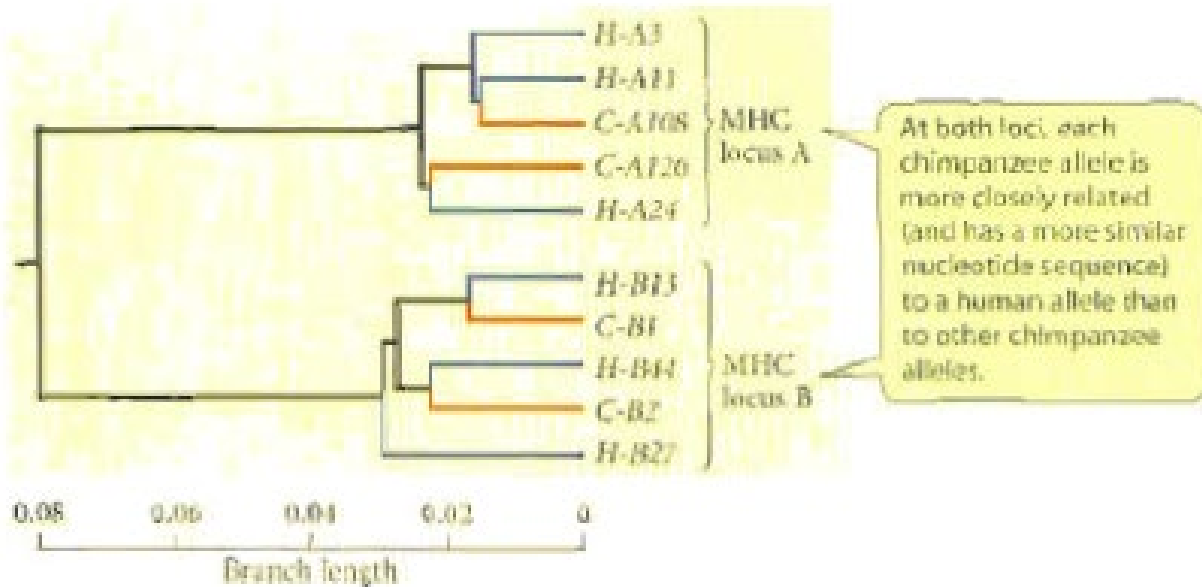




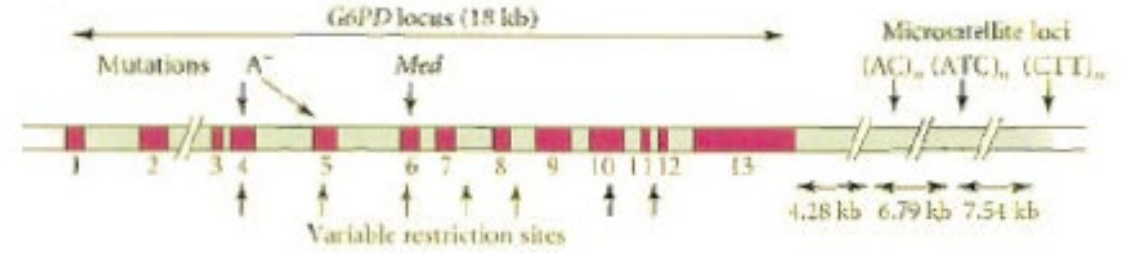
(A)



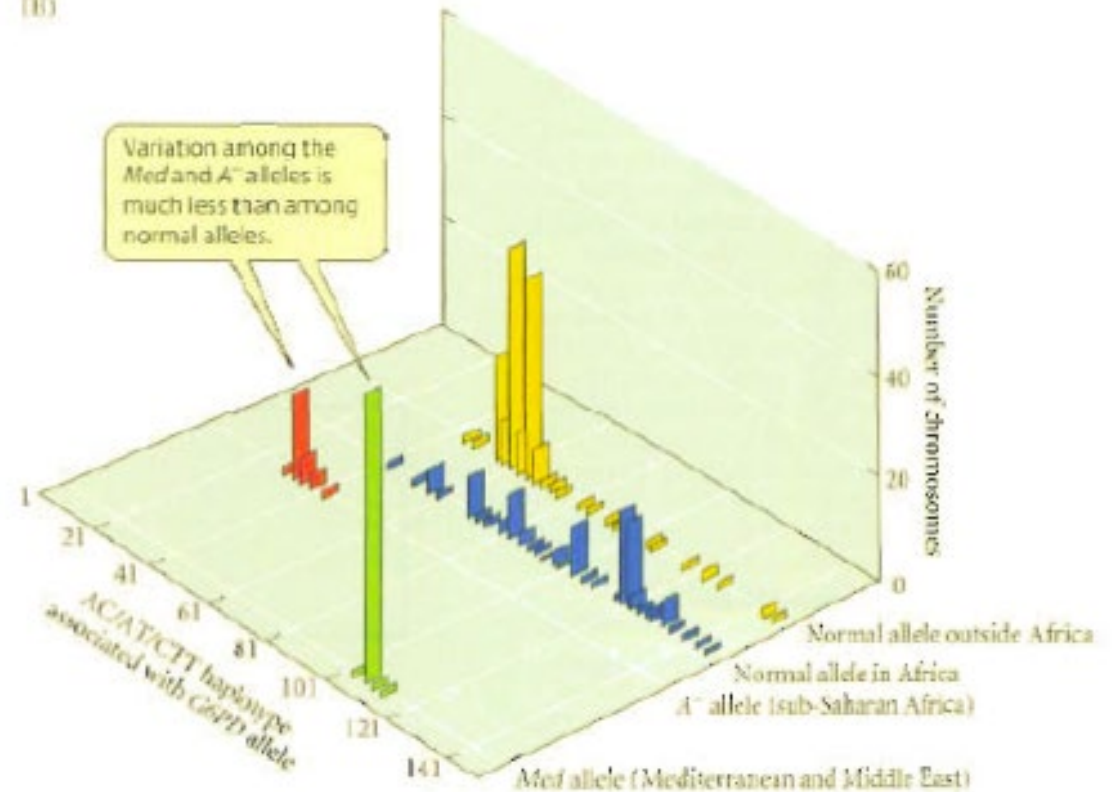
(B)



(A)



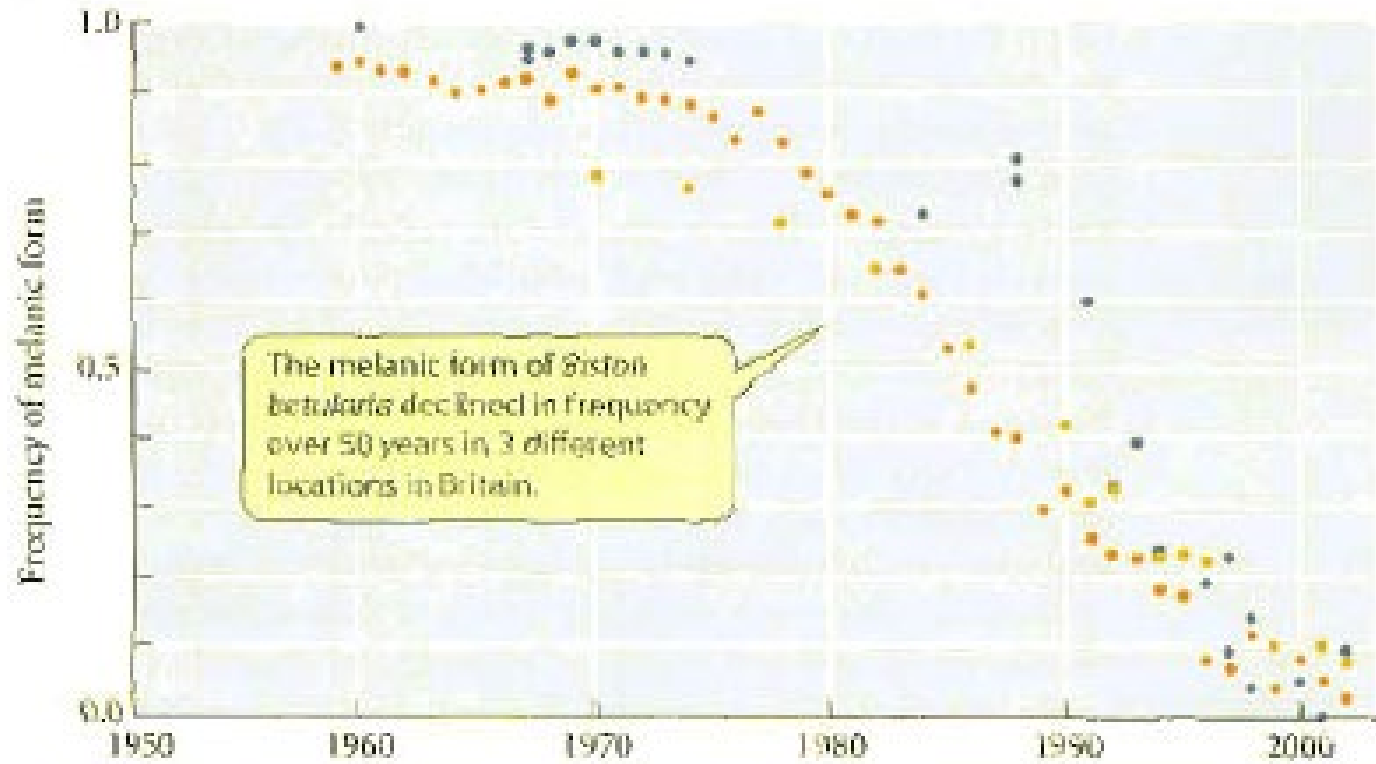
(B)



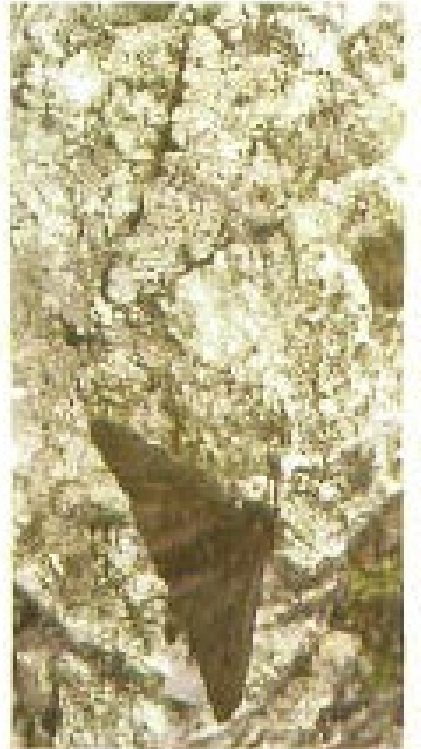
(A)



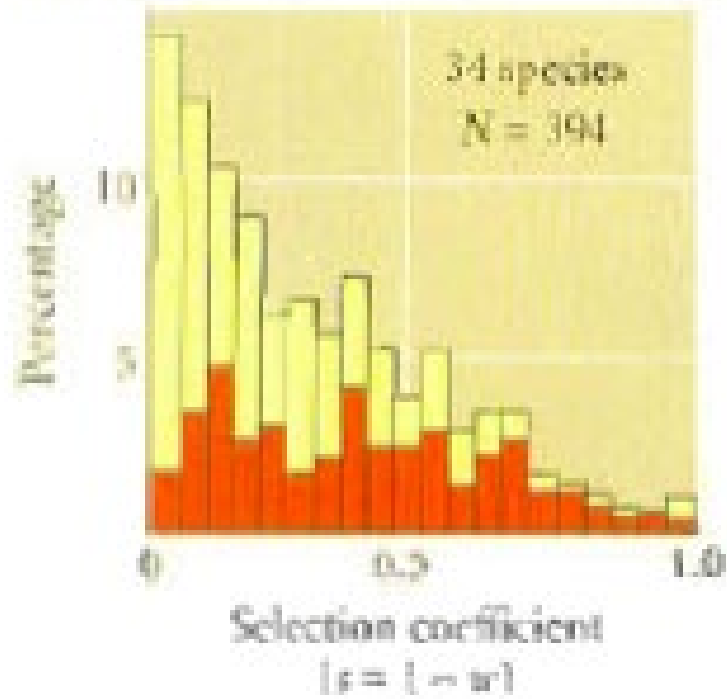
(B)



(C)



(A) Survival differences



(B) Reproductive differences

