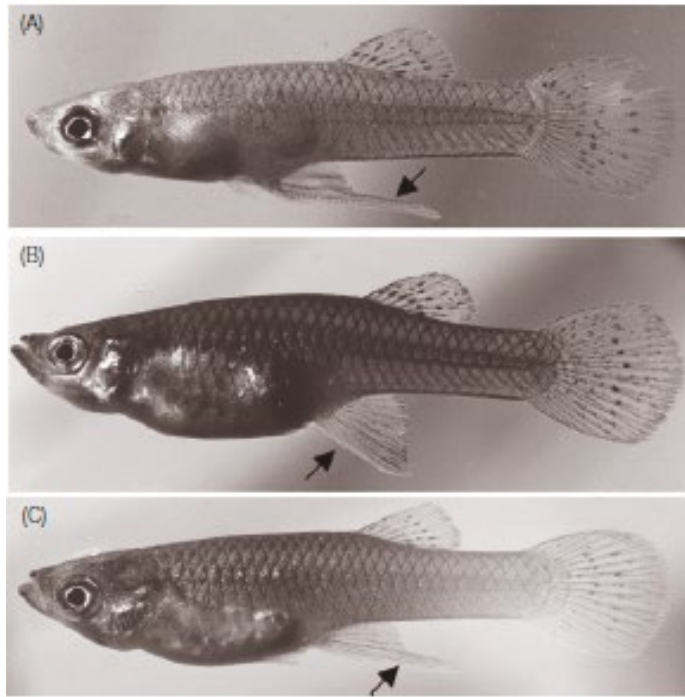
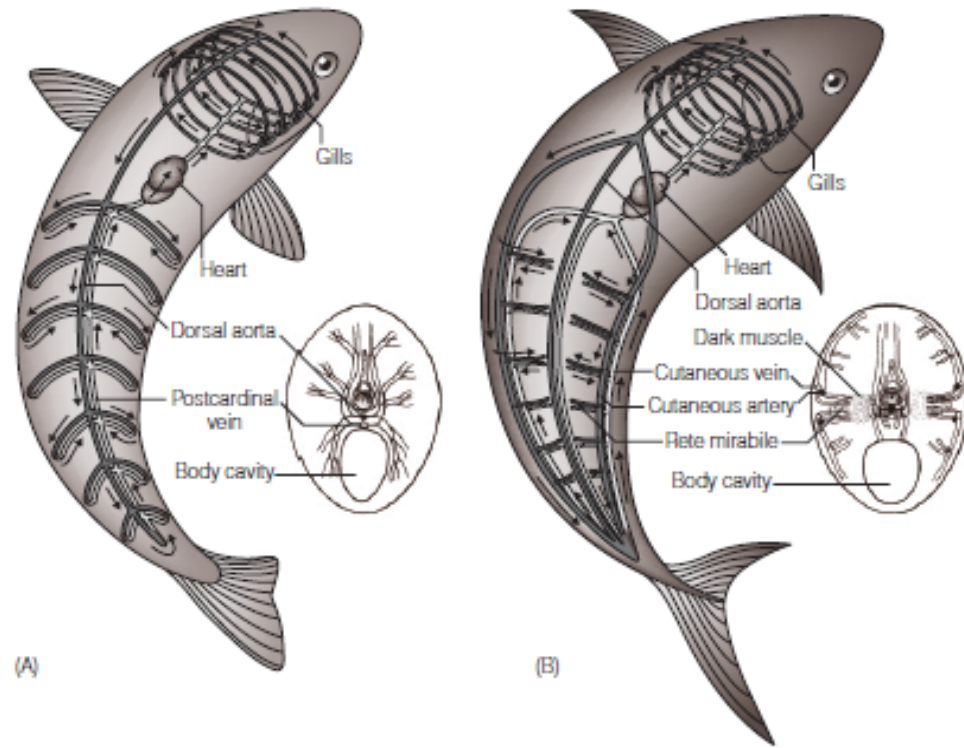
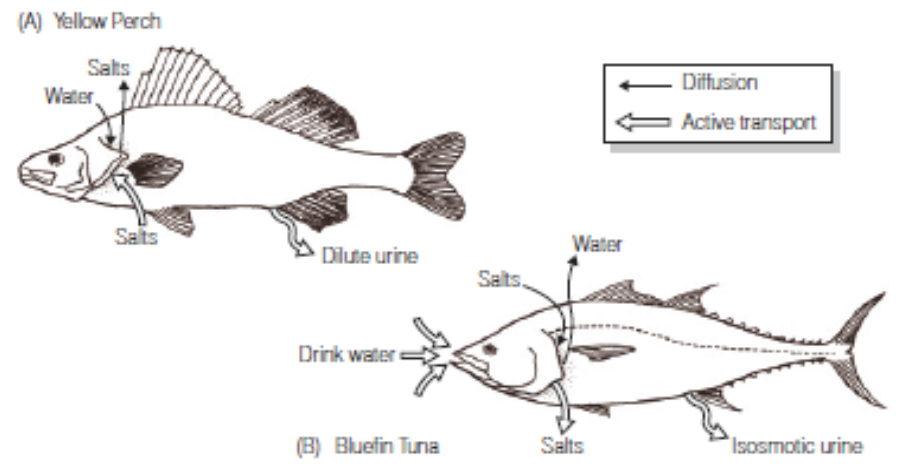
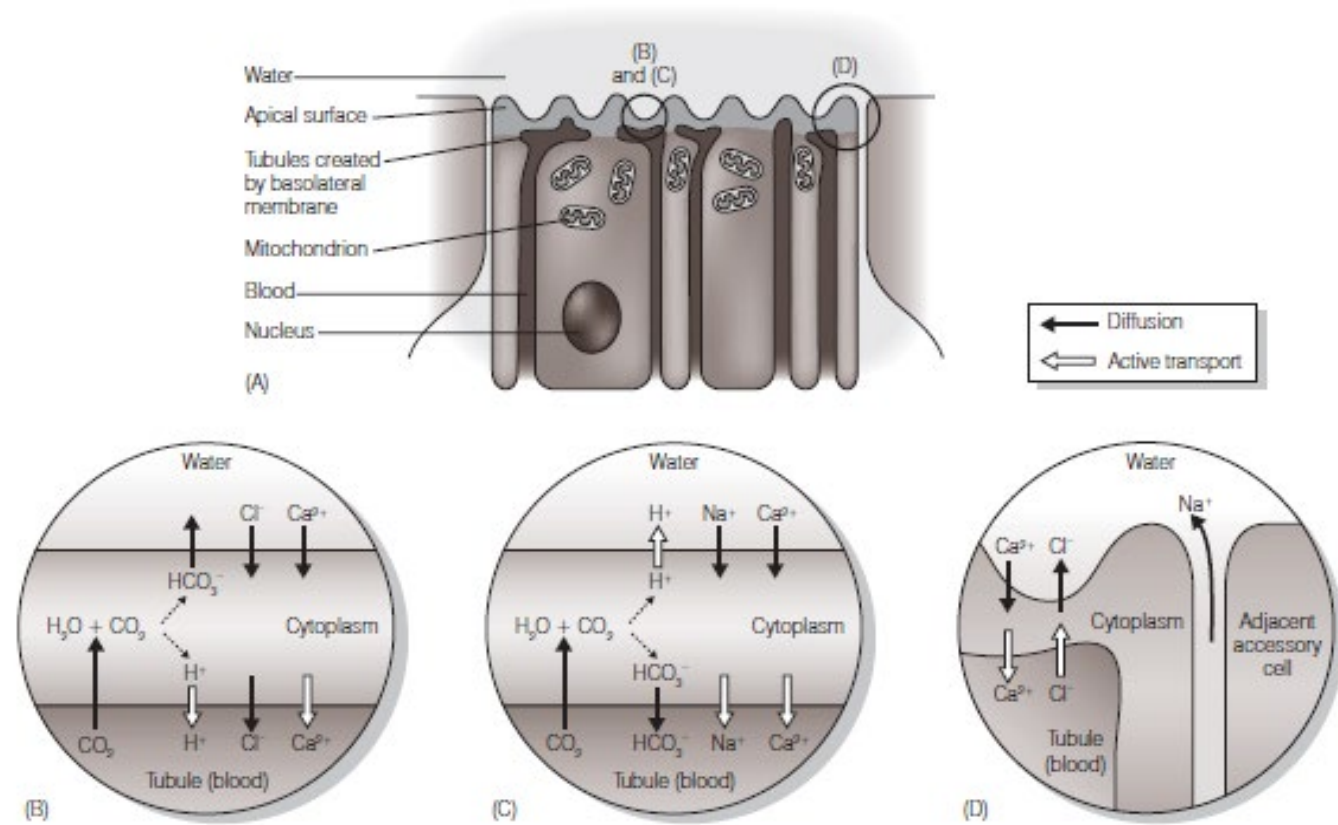


Homeostasi

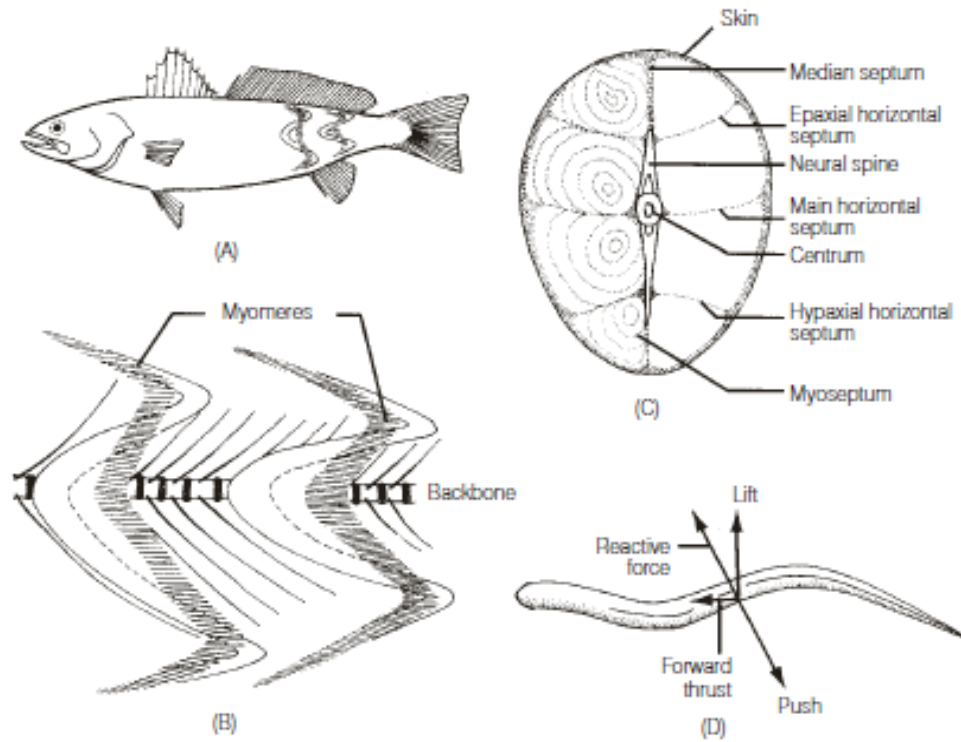









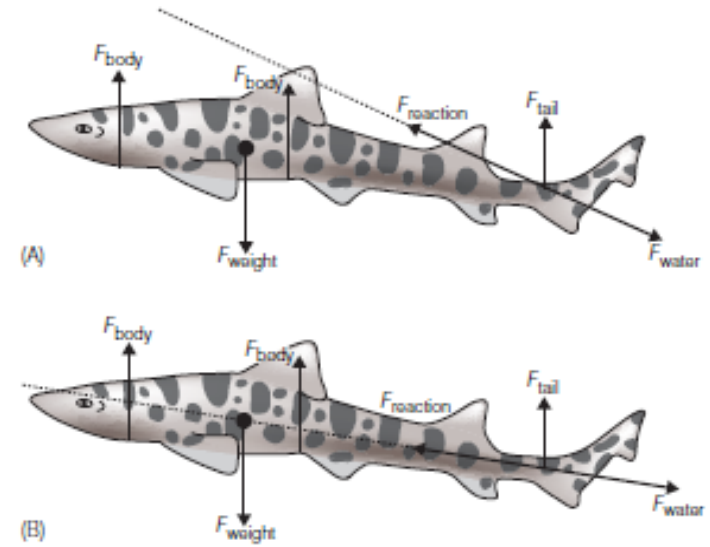
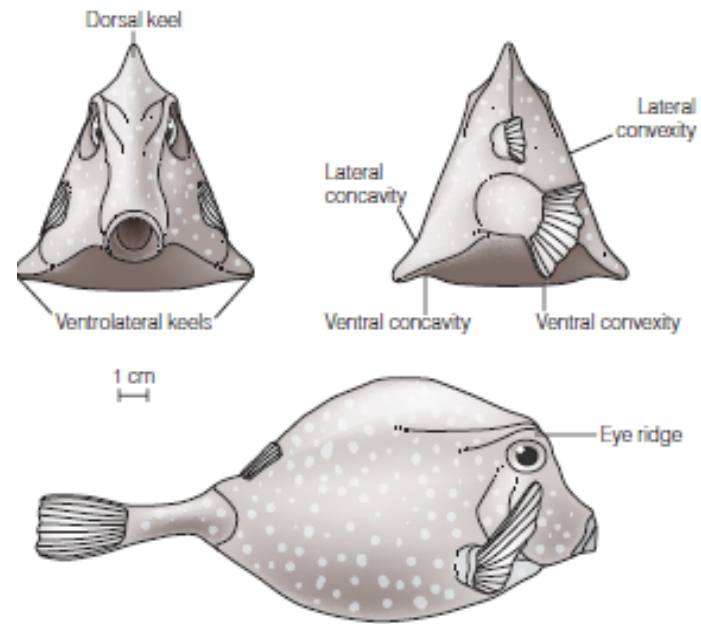


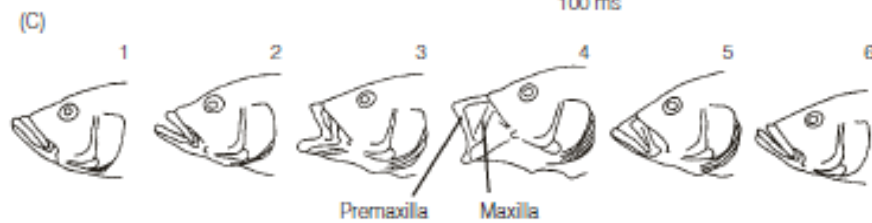
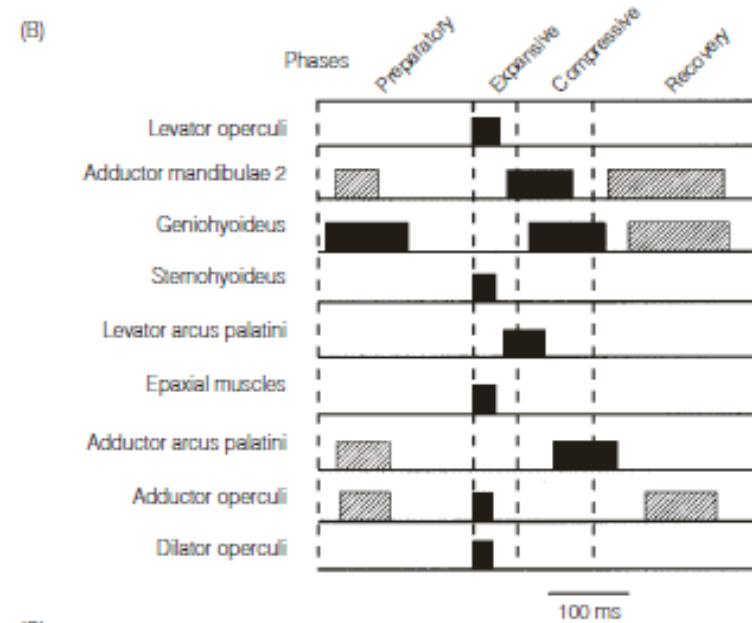
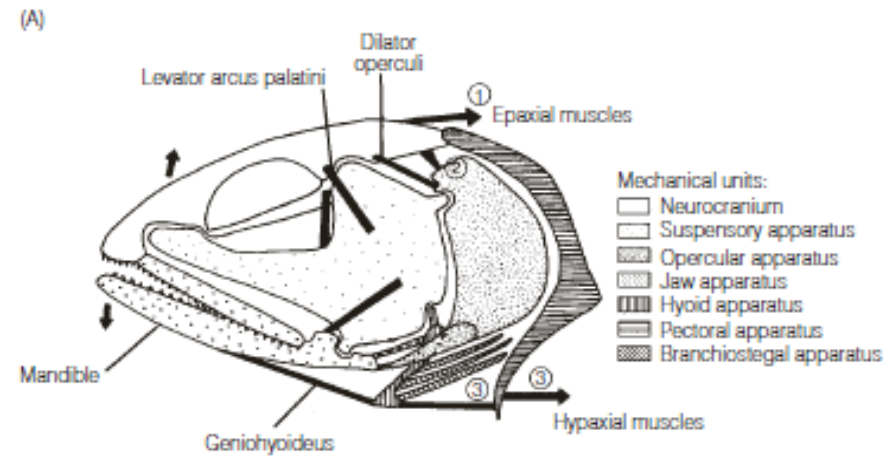


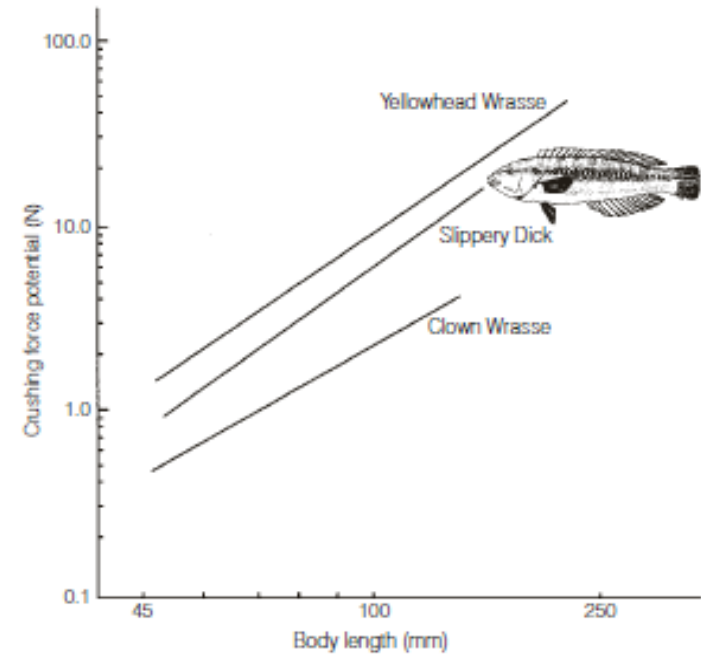
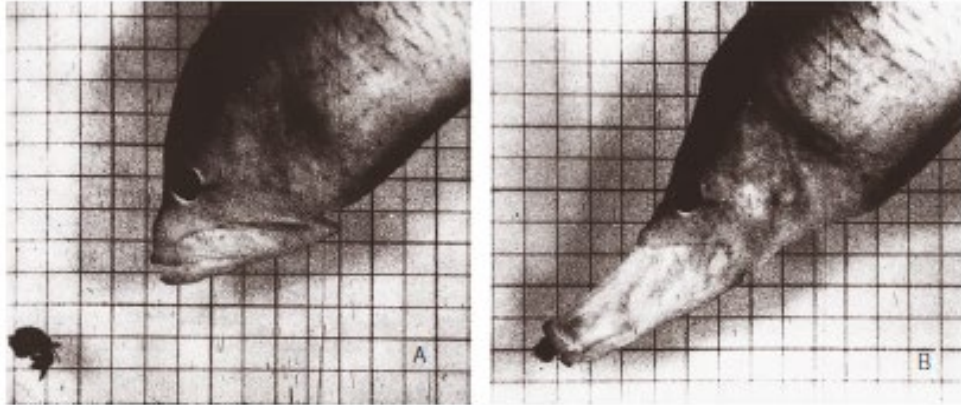
Fonksiyonel Morfoloji

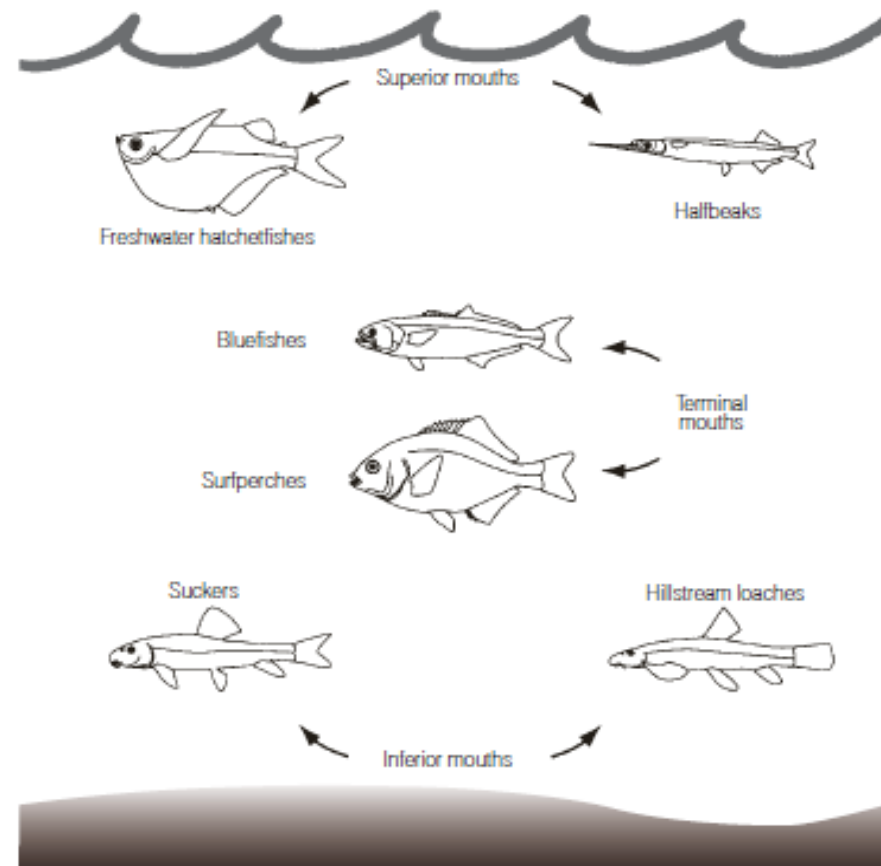


	Swimming type					
	Via trunk and tail			Via fins		
	Anguilliform	Via tail		Tetraodontiform Ballistiform Diodontiform ^b	Rajiform ^b Amliform Gymnotiform	Labriform ^c
		Subcarangiform ^a Carangiform Thunniform	Ostraciiform			
						
Representative taxa	Eels, some sharks, many larvae	Salmon, jacks, mako shark, tuna	Boxfish, mormyrs, torpedo ray	Triggerfish, ocean sunfish, porcupinefish	Rays, Bowfin, knifefishes	Wrasses, surfperch
Propulsive force	Most of body	Posterior half of body	Caudal region	Median fin(s)	Pectorals, median fins	Pectoral fins
Propulsive form	Undulation	Undulation	Oscillation	Oscillation ^d	Undulation	Oscillation
Wavelength	0.5 to >1 wavelength	<1 (usually <0.5) wavelength			>>1 wavelength	
Maximum speed bl/s	Slow-moderate 2	Very fast – moderate 10–20	Slow?	Slow?	Slow to moderate 0.5	Slow 4
Body shape: lateral view cross-section	Elongate Round	Fusifiform Round	Variable	Variable Often deep	Elongate Often flat	Variable
Caudal fin aspect ratio	Small Medium to low	Medium to large Low to high	Large Low	Small to medium Low	Variable Low	Large Low
Habitat	Benthic or suprabenthic	Pelagic, wc, schooling	Variable	wc	Suprabenthic	structure associated









Büyüme

