

Business Model

MoDent

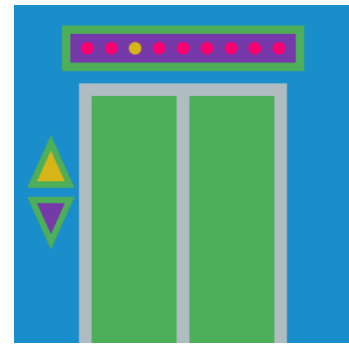


moDent



Patient-specific 3D Dental Models for Surgical Planning

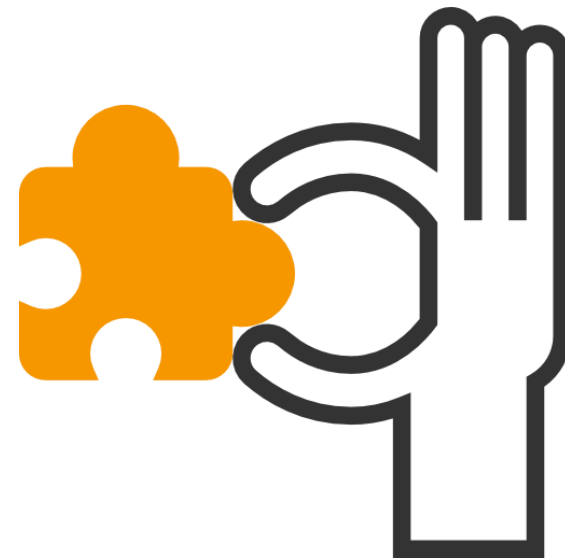




We produce,
Patient-specific dental
models that will meet the
surgical planning needs of
dentists.

Problem

Surgical Operation
Planning Process



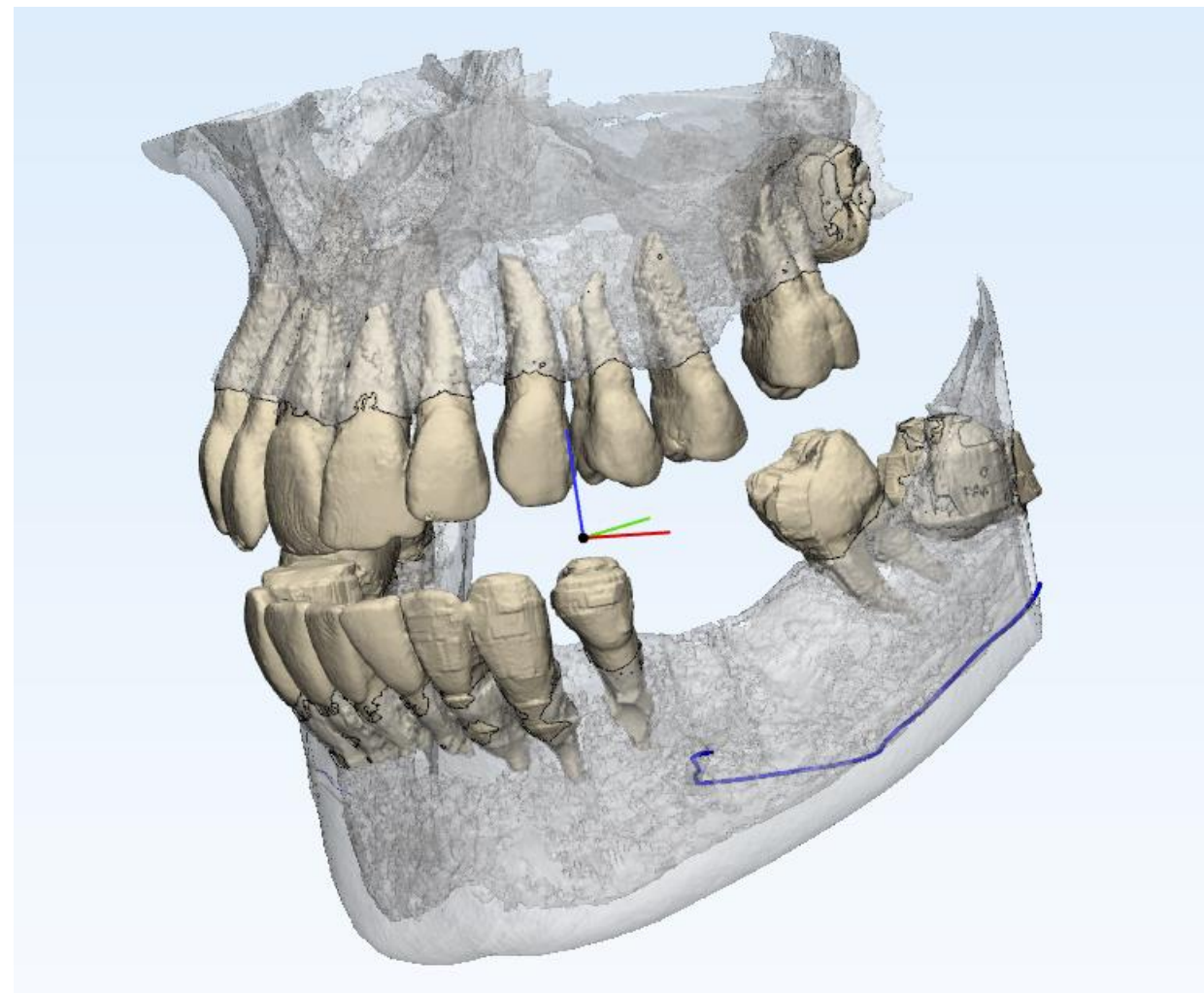
Solution

Solid Mouth **n** Model for
Each Patient



Product / Service

- ✓ Transparent bone (maxilla and/or mandible)
- ✓ Pulp
- ✓ Fang (tooth root)
- ✓ Realistic Material



Project Stages



PATIENT DATA (CT IMAGE)



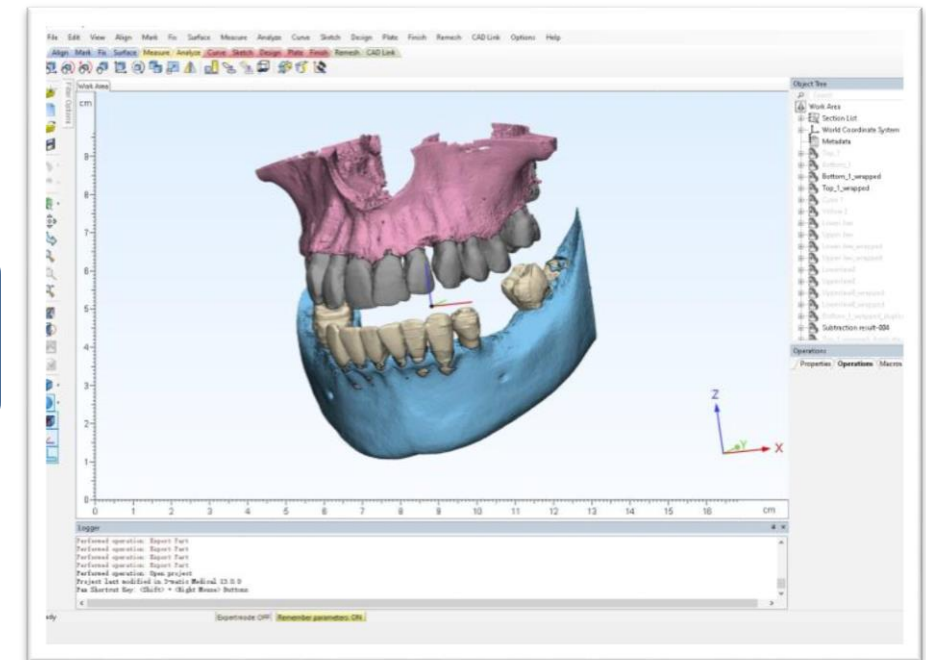
MEDICAL IMAGE PROCESSING

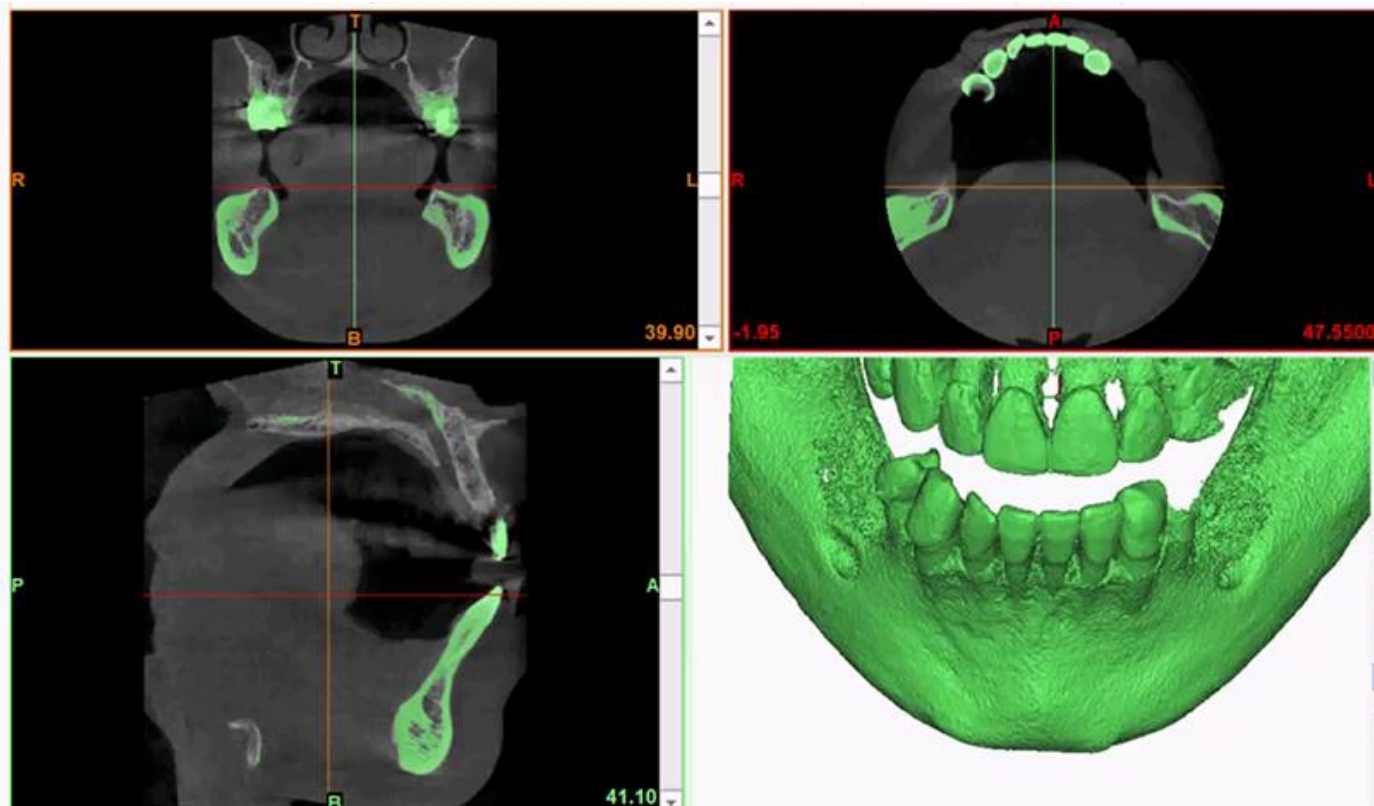


3-D MODELLING

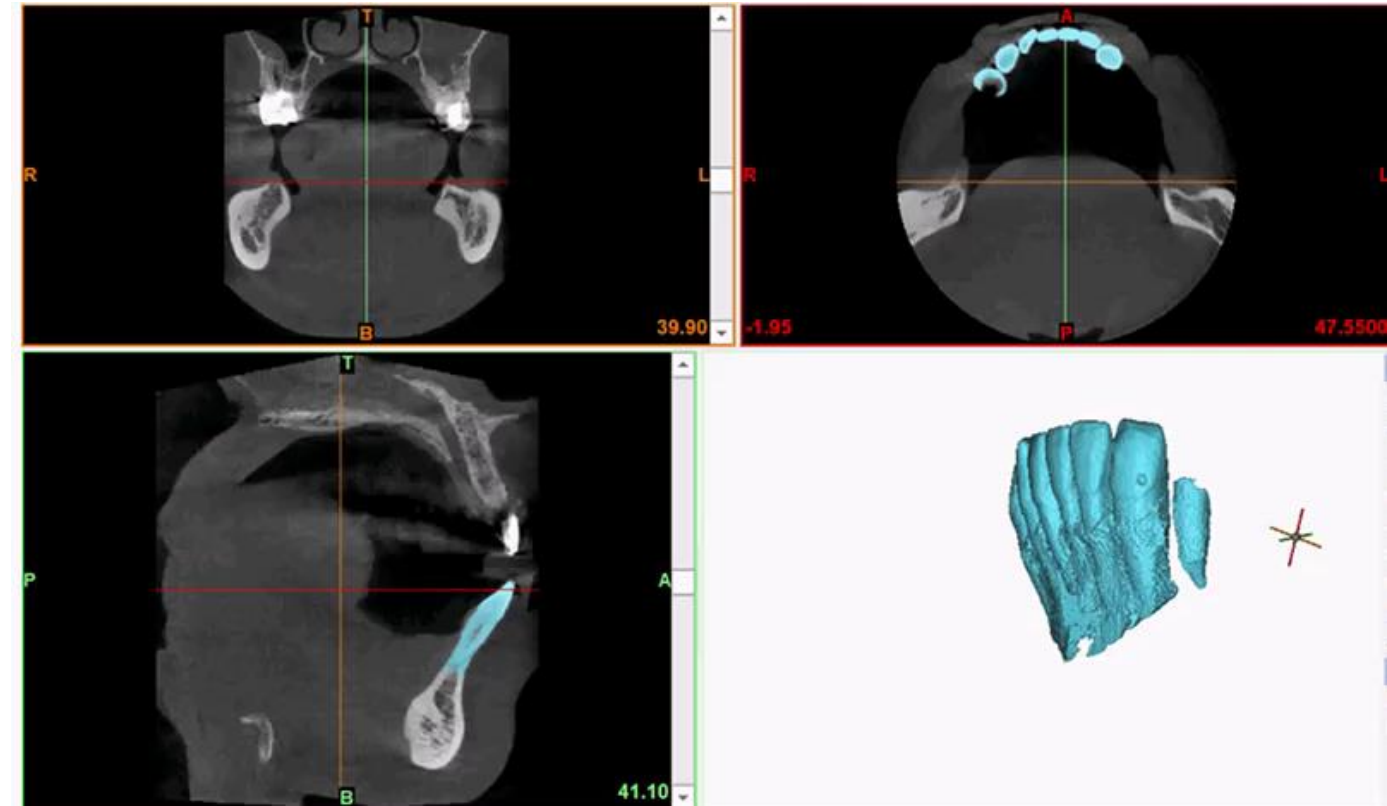


3-D PRINTING

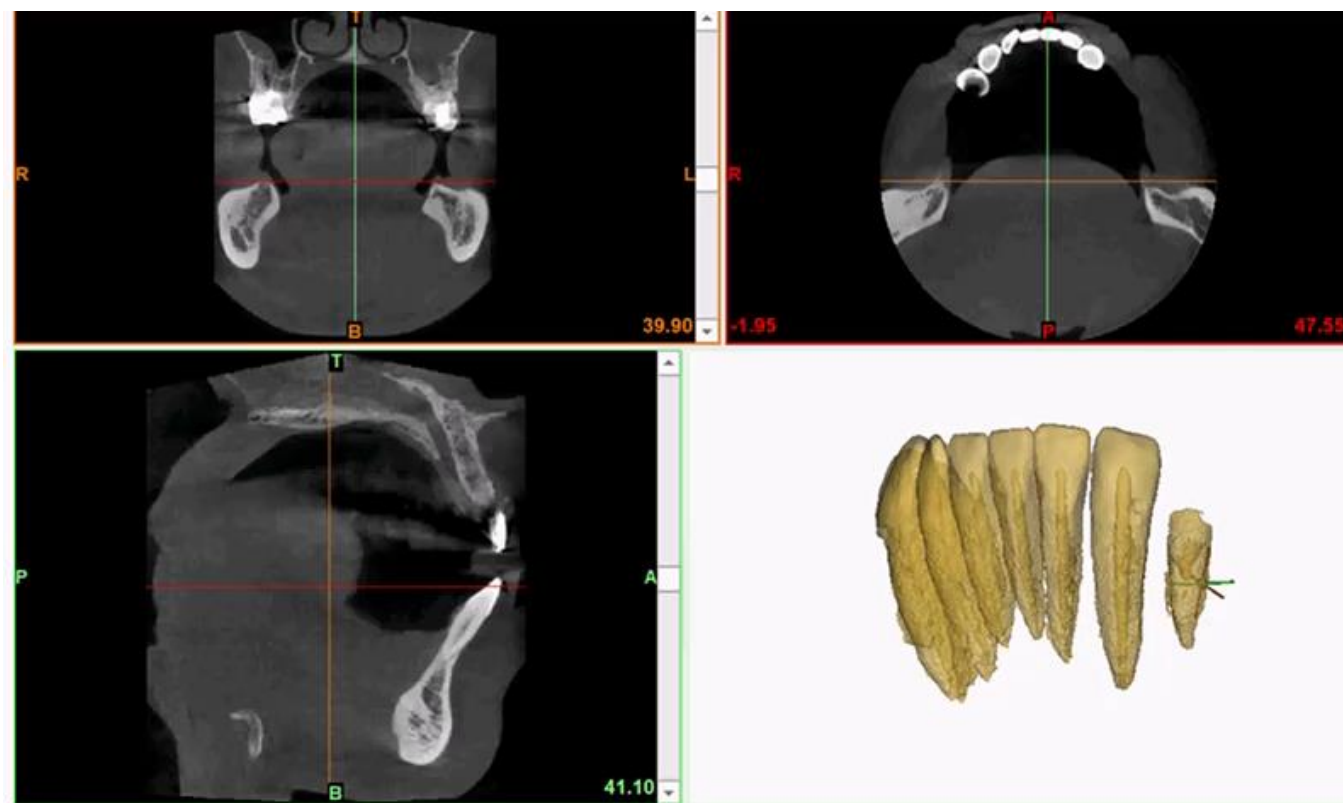




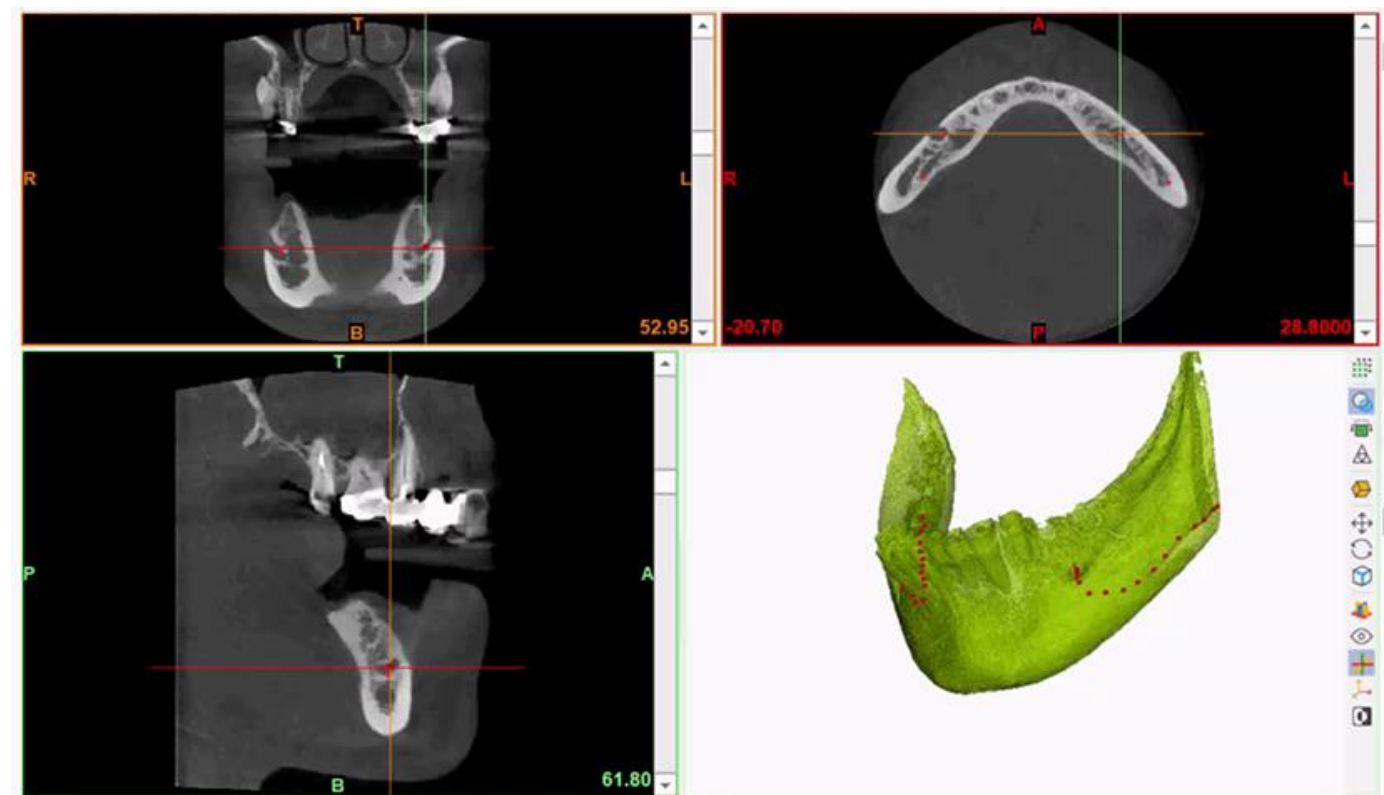
✓ Whole mouth model



✓ Tooth



✓ Tooth remodelled (pulp)



✓ Veins and mandible

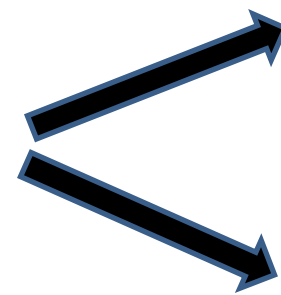


✓ Patient-specific dental model

Sale Plan



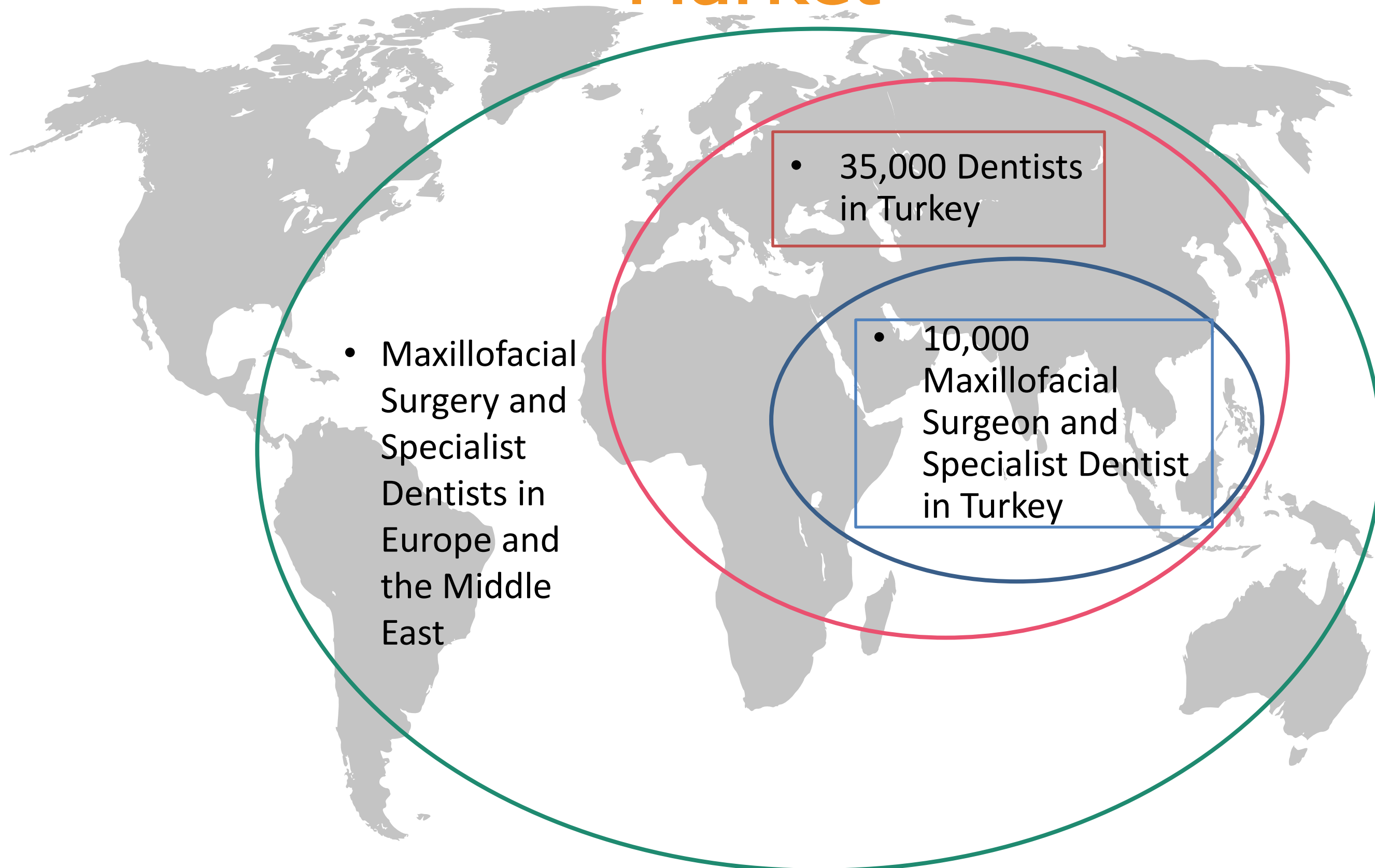
DIRECT SALE







3D Solid Model

Animation

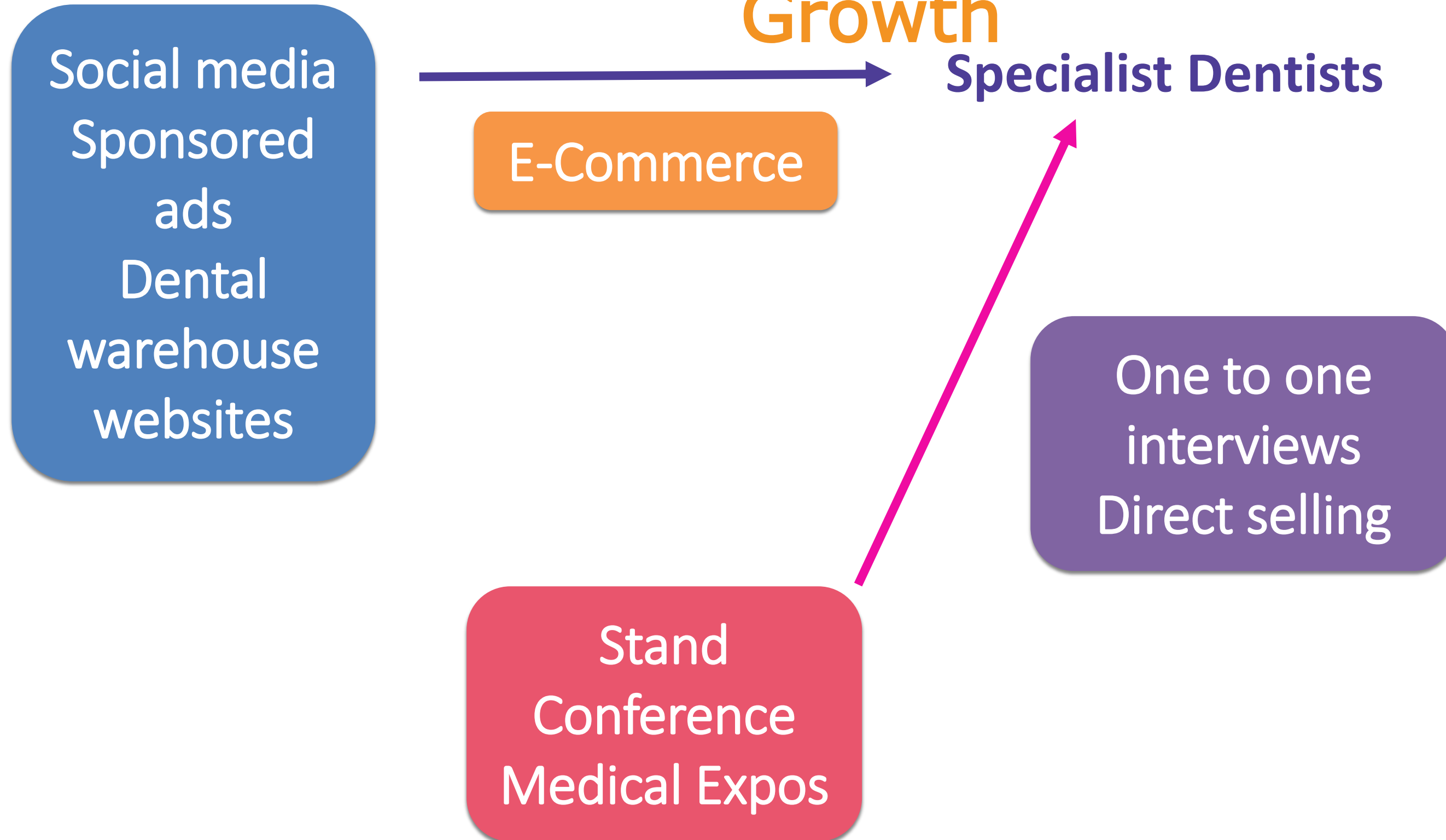
Market



Rivals

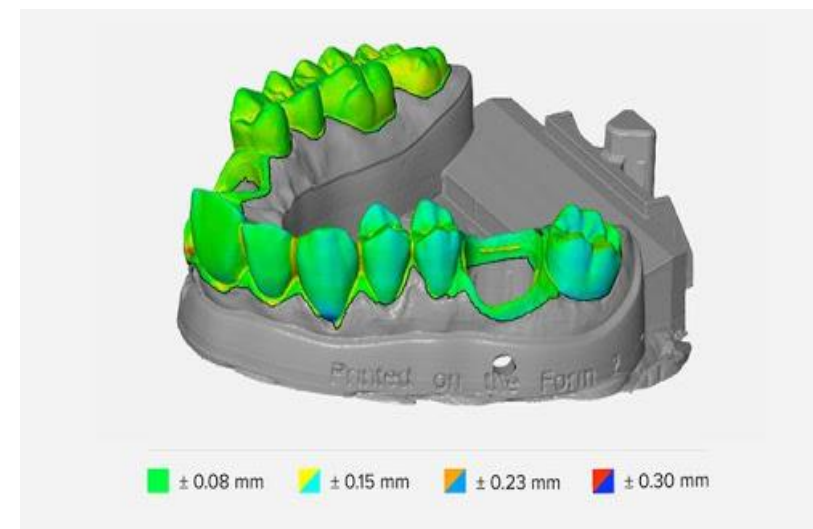
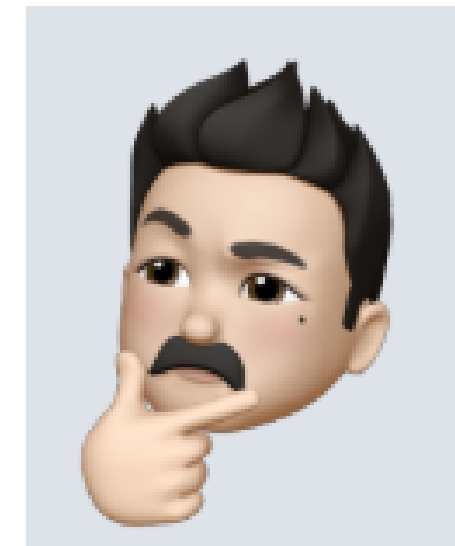
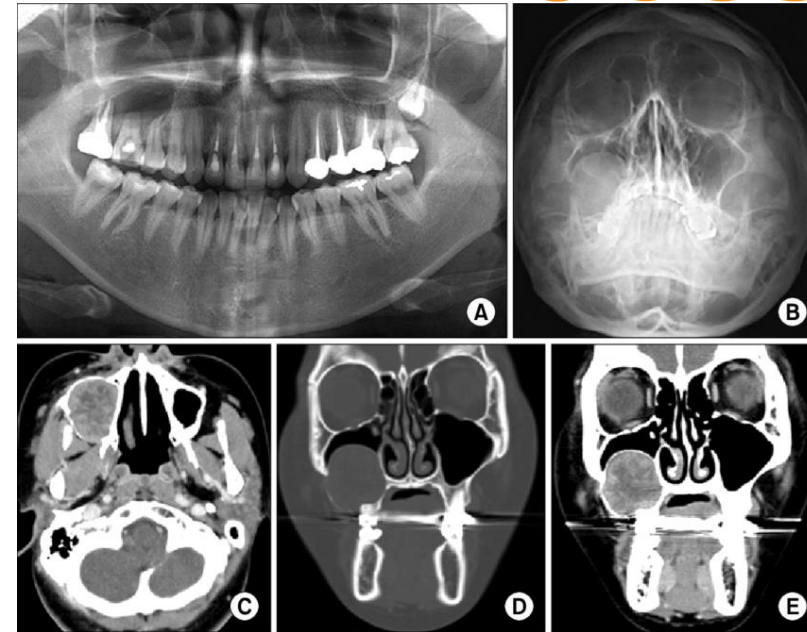
			METÜM		
Patient-Specific	✓	✓	✓	✓	✗
Transparent	✓	✗	✗	✗	✗
Pulp	✓	✗	✗	✗	✗
Fang	✓	✗	✗	✗	✓
Realistic Material	✓	✗	✗	✓	✓
Application	✓	✗	✗	✗	✓

Market Entry, Sales Channels & Growth



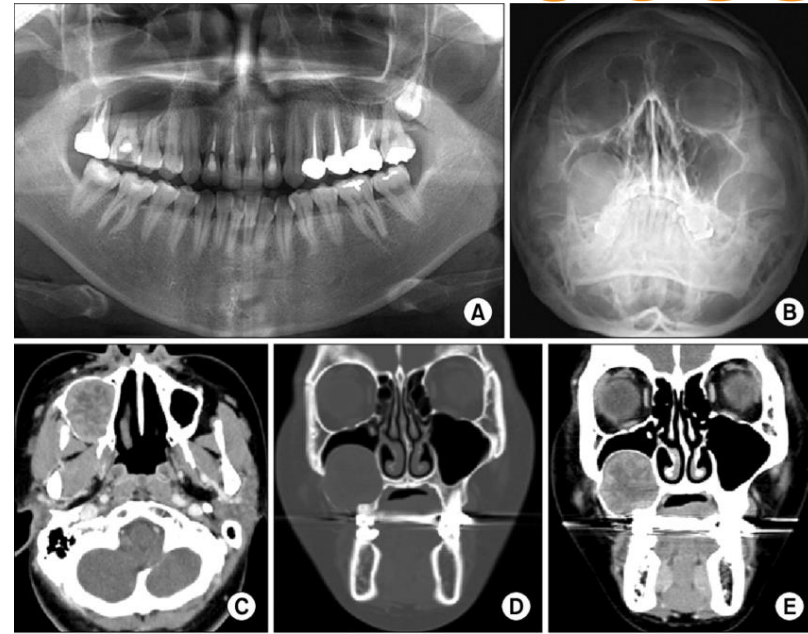


Production & Distribution Processes





Production & Distribution Processes



SUSTAINABLE DEVELOPMENT GOALS



Applications & Acceptance

TÜBİTAK “2209-B Industry Oriented Research Project Support Programme for Undergraduate Students”

TÜSİAD “Bu Gençlikte İş Var” Entrepreneurship Program

TÜBİTAK “1512 Technology Capital Support Program (BiGG)”



Feasibility & Finance

Unit Profit Margin: %75

Solid Model Sales: 330 USD

Sales, marketing, general administrative expenses and production costs : 80 USD

Gross profit: 33.33%
Net Profit: 300%

1 USD = 6,33 TL

	2022	2023	2024	TOTAL
INCOME (USD)				
Sales Revenues	853000	3475000	17000000	21328000
Other Revenues	3000	3500	5500	12000
TOTAL	856000	3478500	17005500	21340000
OUTCOME (USD)				
Production Expenses (Raw materials, operating materials, labor packaging, etc.)	213250	868750	4250000	5332000
Marketing Expenses	3500	4500	6500	14500
Other expenses	28000	19500	35500	83000
TOTAL	244750	892750	4292000	5429500
REV. AND EX. DIFFERENCE	611250	2585750	12713500	15910500

Dental Model Project Plan ☆ Dental Model Project TEAM Free Ekip Üyelerine Görünür OD A E MT

To DO

- Printing 30 May A E MT OD
- Survey A E MT OD

+ Başka bir kart ekle

In Progress

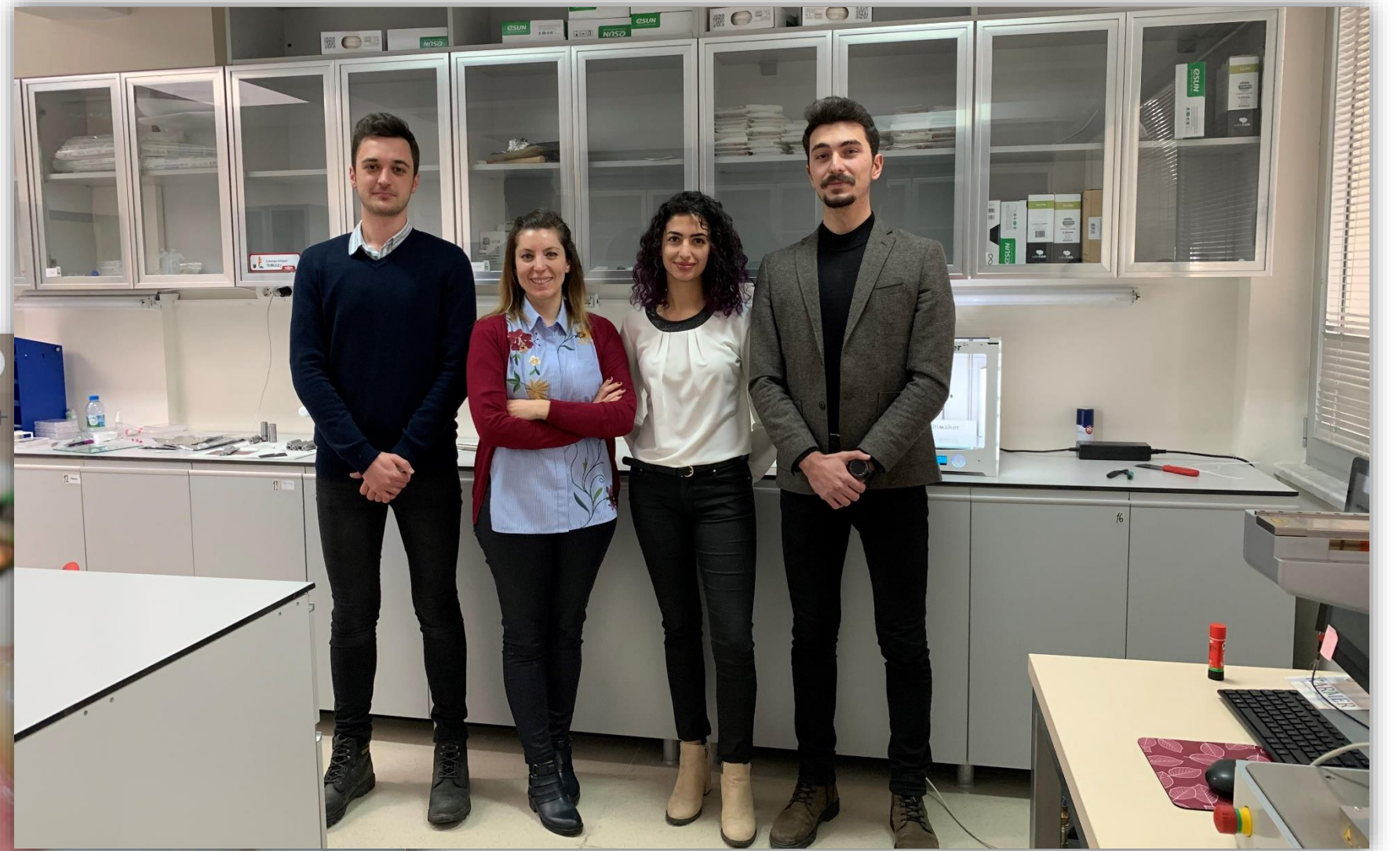
- Girişimcilik Başvuruları 15 Oca 0/1 E MT OD
- Hasta Verisi Tamamlama 9 Ara 2019 A E MT OD
- MIMICS WORKSHOP DAY 31 Ara 2019 A E MT OD
- REPORT 29 Ara 2019 0/4 A E MT OD

+ Başka bir kart ekle

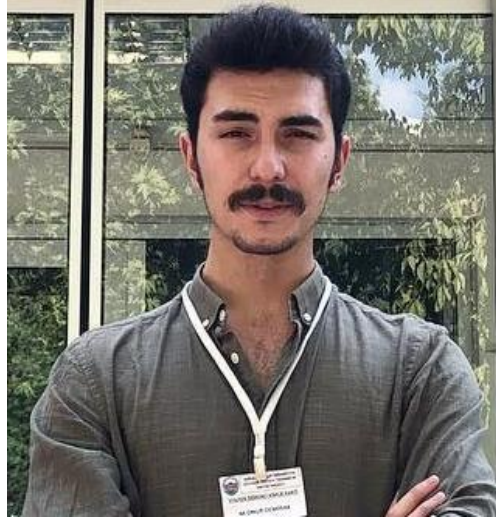
DONE :-)

- Data Collection 30 Ara 2019 A E MT OD
- MIMICS 31 Oca A E MT OD
- 3matic 1 30 Mar A E MT OD
- TUBITAK 2209B 30 Eki 2019 E MT OD
- Material Search 15 Kas 2019 1/5 A E MT OD
- Permission 30 Kas 2019 A E MT OD

+ Başka bir kart ekle



Our Team



Onur Demirak
Project Management
-Biomedical Engineering
-IEEE EMBS Student
Community
Representative



Esin Yiğit
Design
- Biomedical
Engineering
-Internship at
Medical Design
Center



Abdo Rezk
Design
- Biomedical
Engineering
- Architecture
Undergraduate
Education



Mustafa Tüfekçi
Product Development
- Biomedical
Engineering
- Internship at
Medical Device
Company



For Your Feedback and Questions...

modent.info@gmail.com

0554 363 55 36



moDent