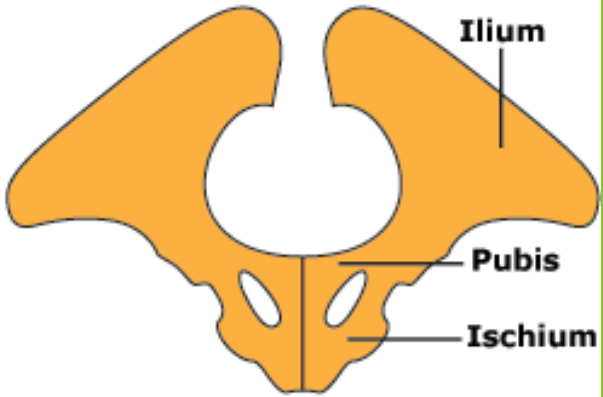
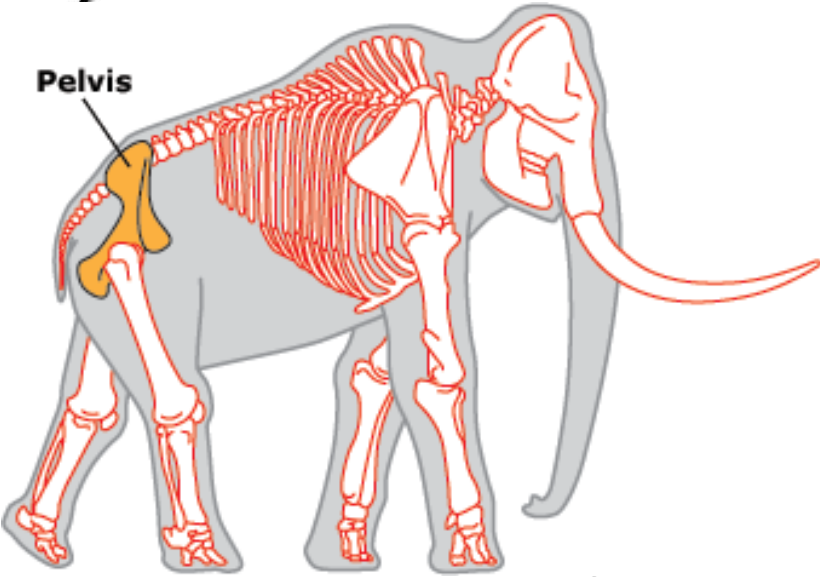
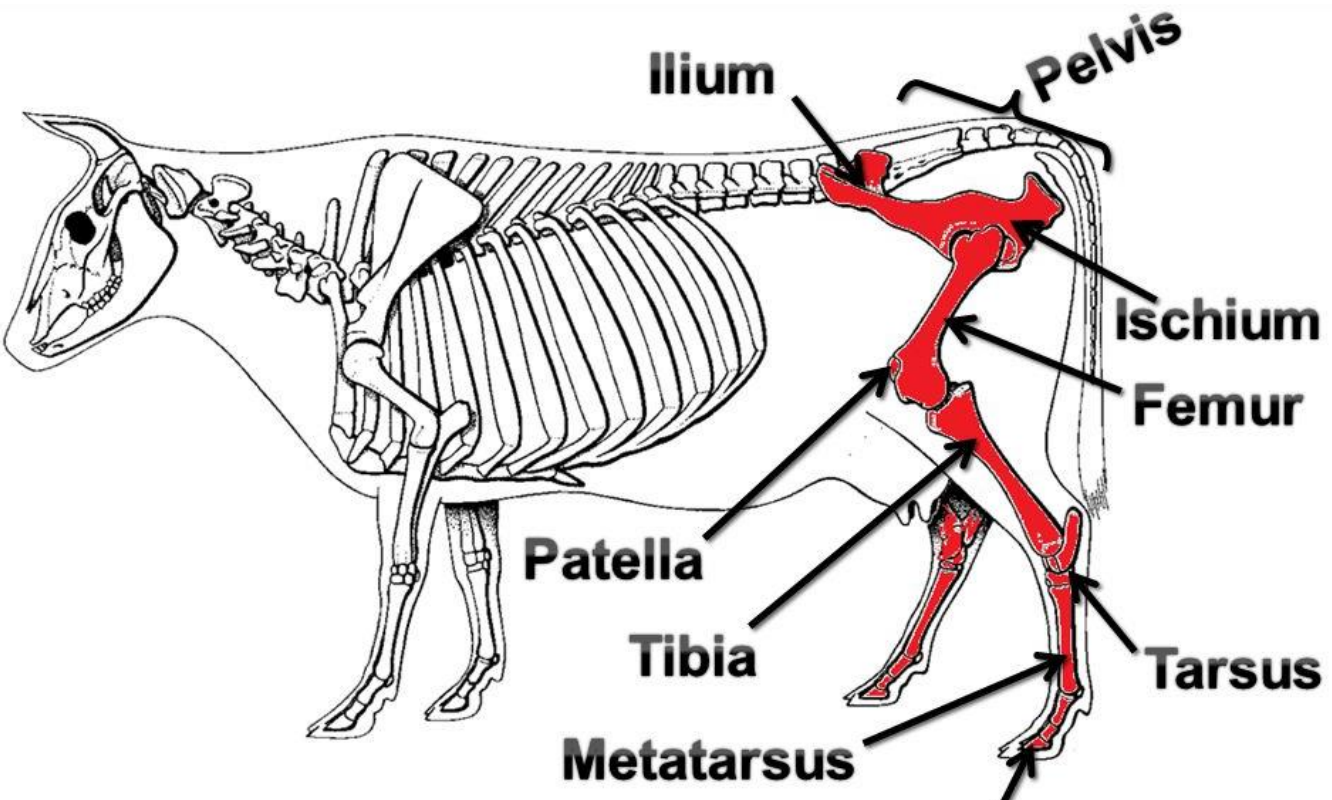


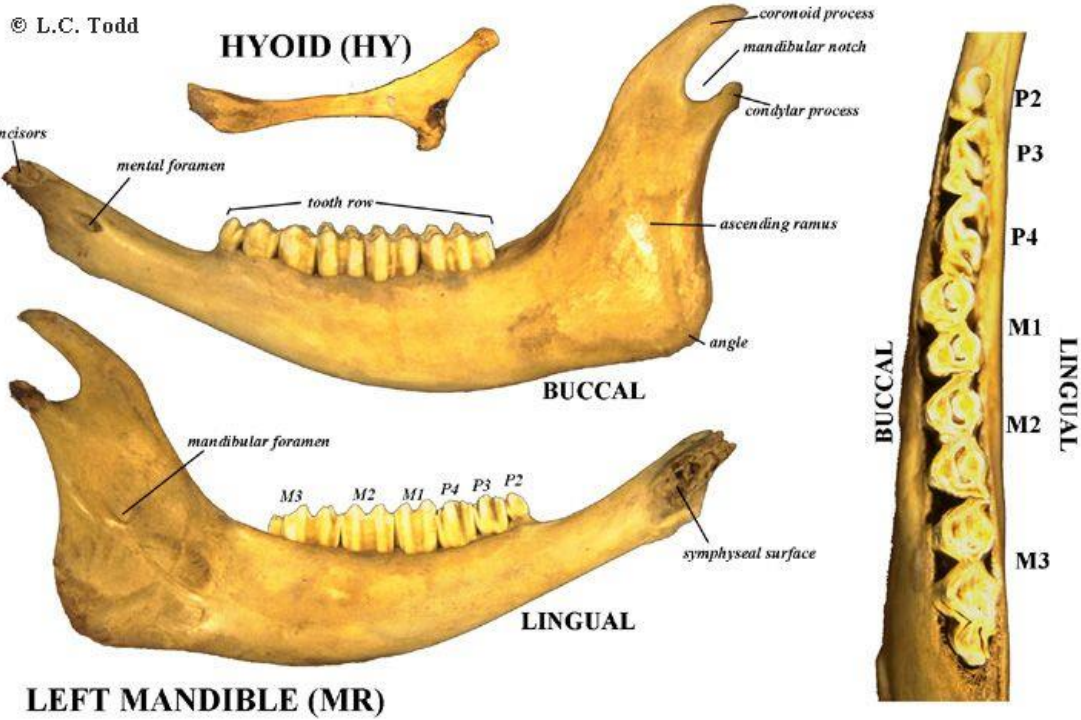
- ▶ **Astragalus:** Aşık kemiği,
- ▶ **Calcaneus:** Topuk kemiği,
- ▶ **Cranial:** Kafatası,
- ▶ **Diaphysis (Diyafiz):** Uzun kemiklerde ortada eklem bağlantısı olmayan kısım,
- ▶ **Epiphysis (Epifiz):** Uzun kemiklerde kemik ucu,
- ▶ **Femur:** Uyluk kemiği,
- ▶ **Humerus:** Ön kol kemiği,
- ▶ **İlium:** Kalça kemiği,
- ▶ **Mandibula:** Alt çene kemiği,
- ▶ **Metapodialis:** Ön ayak ve arka ayak tarak kemikleri,
- ▶ **Metacarpus:** Ön ayak tarak kemiği,
- ▶ **Metatarsus:** Ayak tarak kemiği,
- ▶ **Pelvis:** Leğen kemiği,
- ▶ **Phalanges:** Parmak kemikleri,
- ▶ **Post Cranial:** Kafa dışındaki beden iskeleti,
- ▶ **Radius:** Döner kemik,
- ▶ **Scapula:** Kürek kemiği,
- ▶ **Tibia:** Kaval kemiği,
- ▶ **Vertebrae:** Omur.

**İlium: Kalça kemiği**

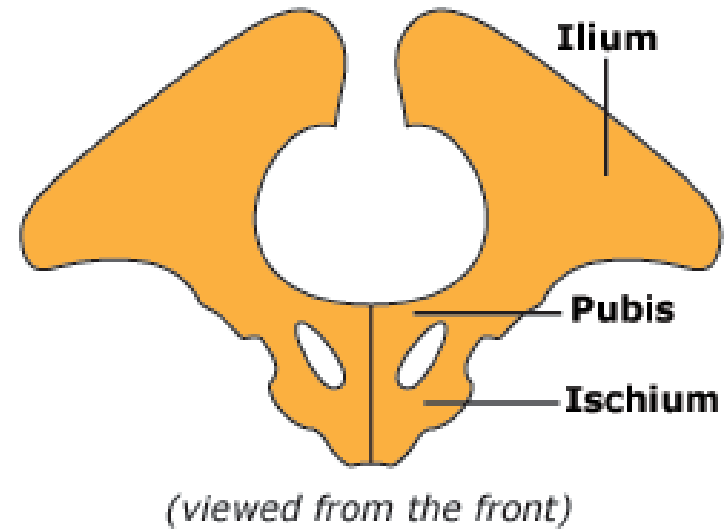
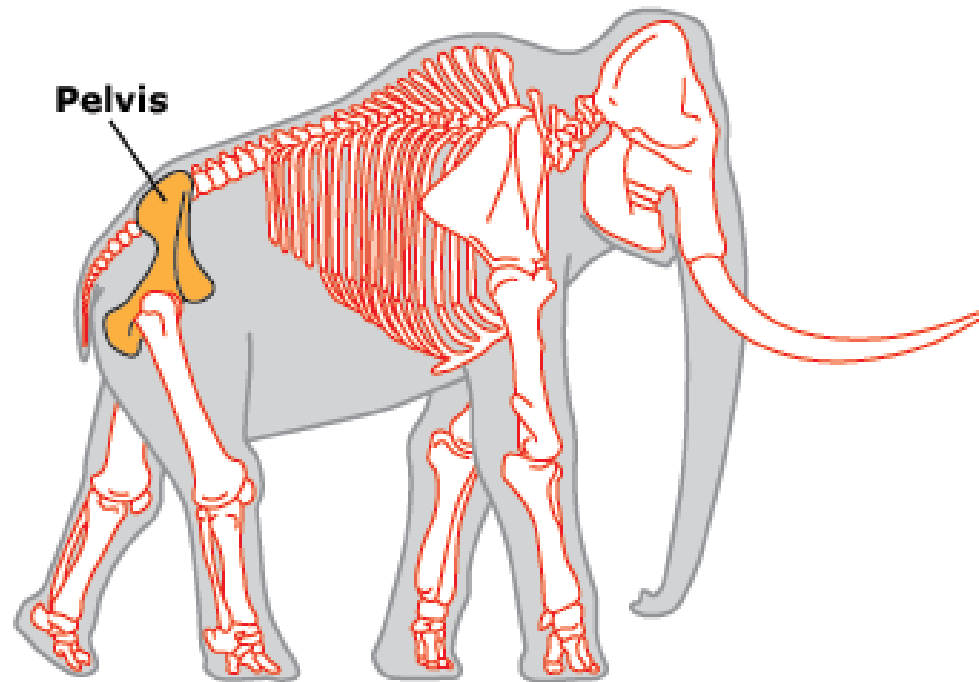


*(viewed from the front)*

# Mandibula: Alt çene kemiği

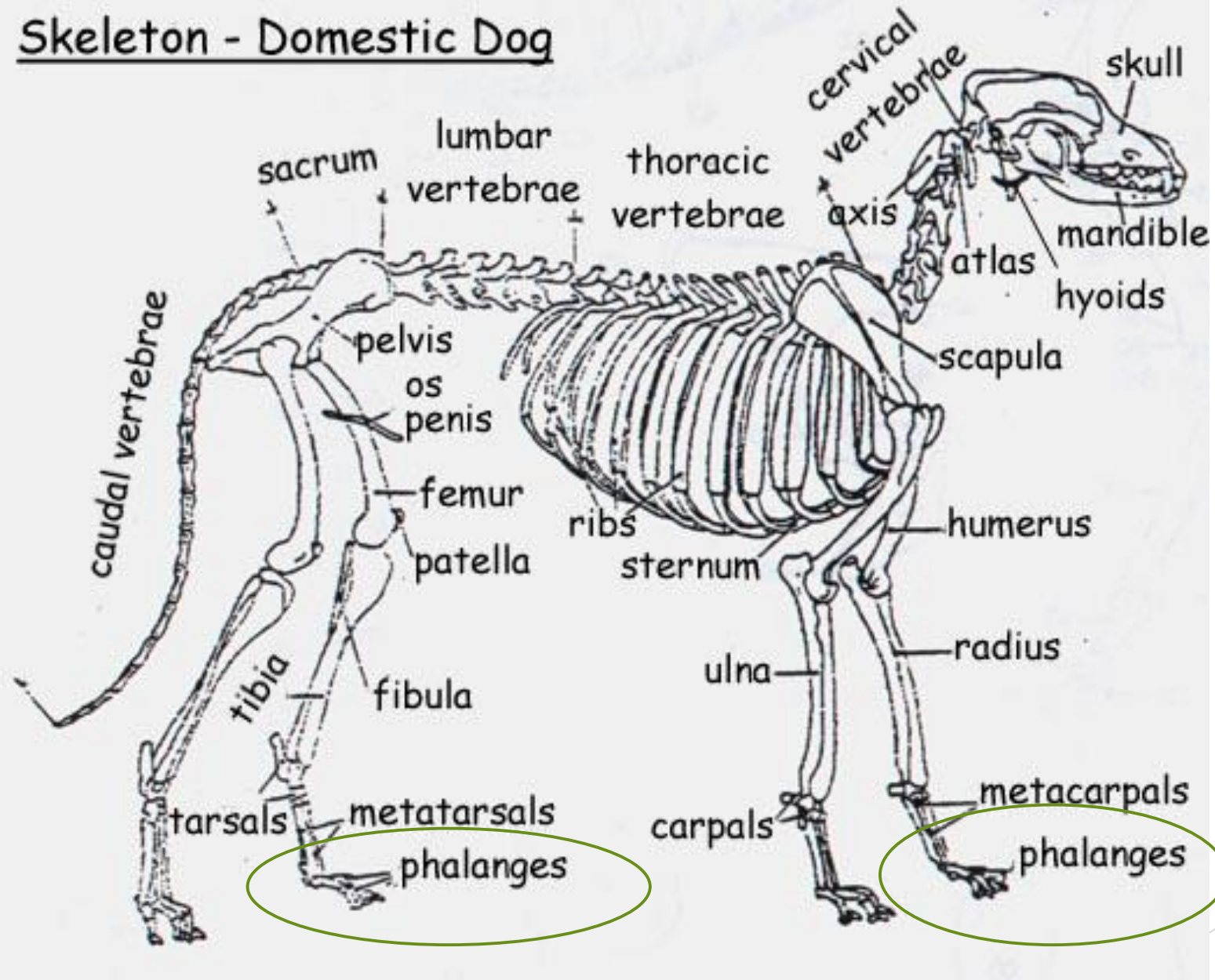


## Pelvis: Ležen kemiği

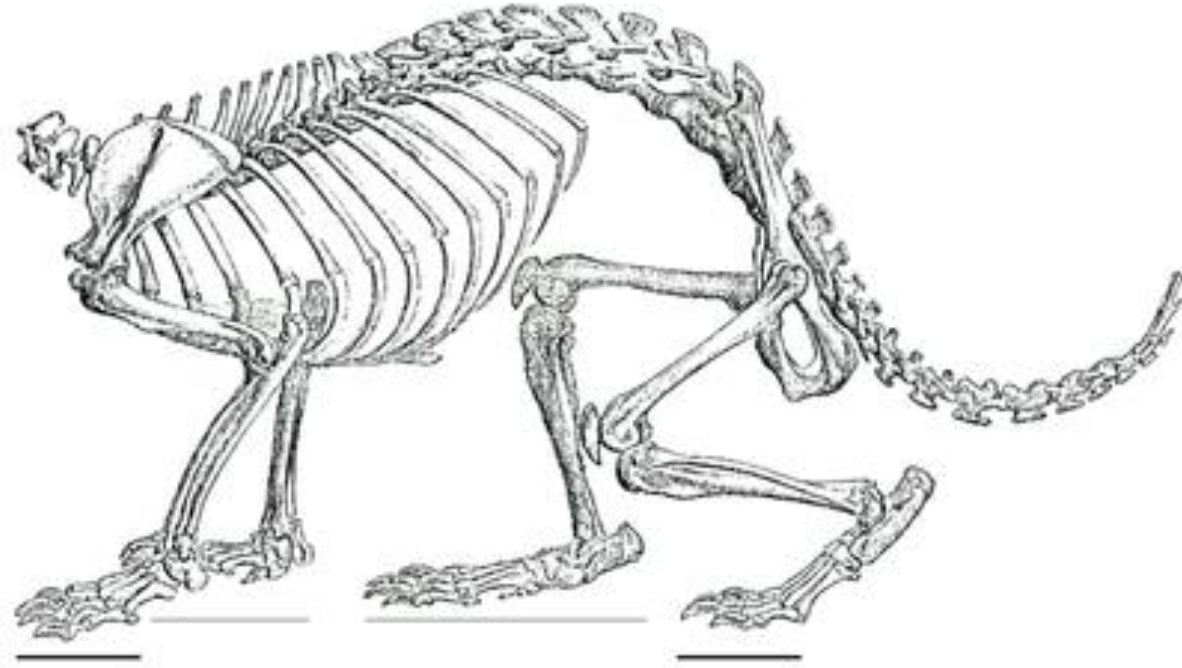


## Phalanges: Parmak kemikleri

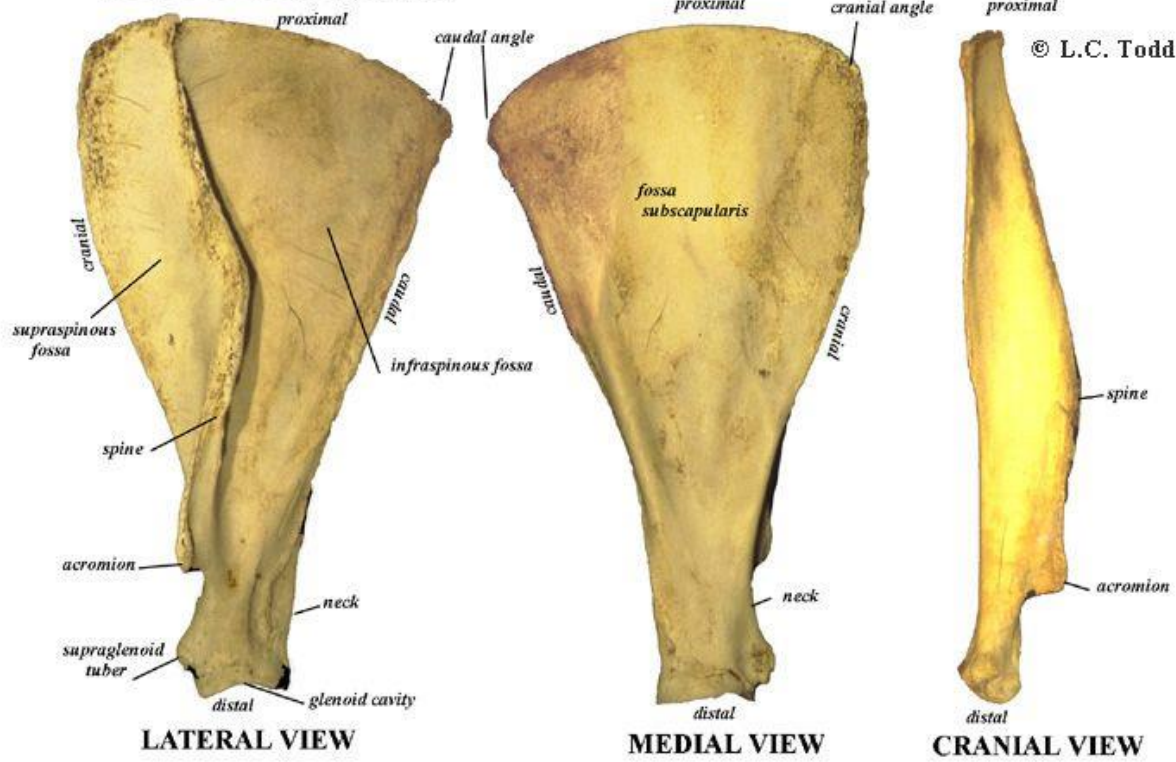
### Skeleton - Domestic Dog



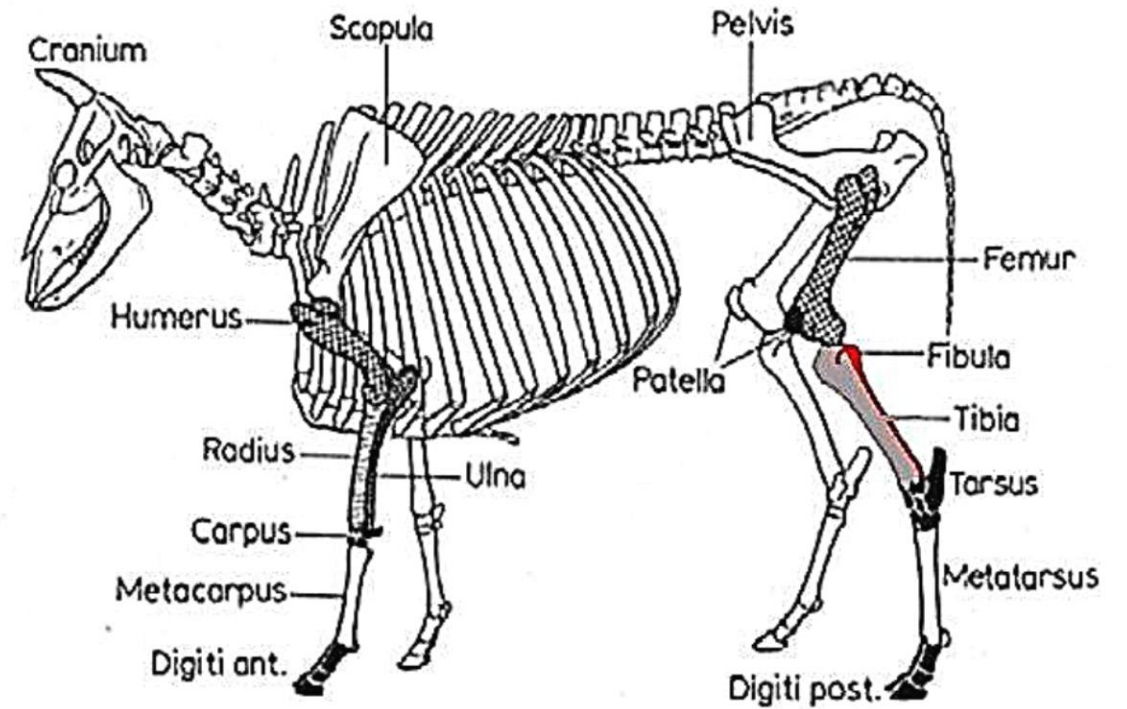
## Post Cranial: Kafa dışındaki beden iskeleti



# SCAPULA (SC) LEFT

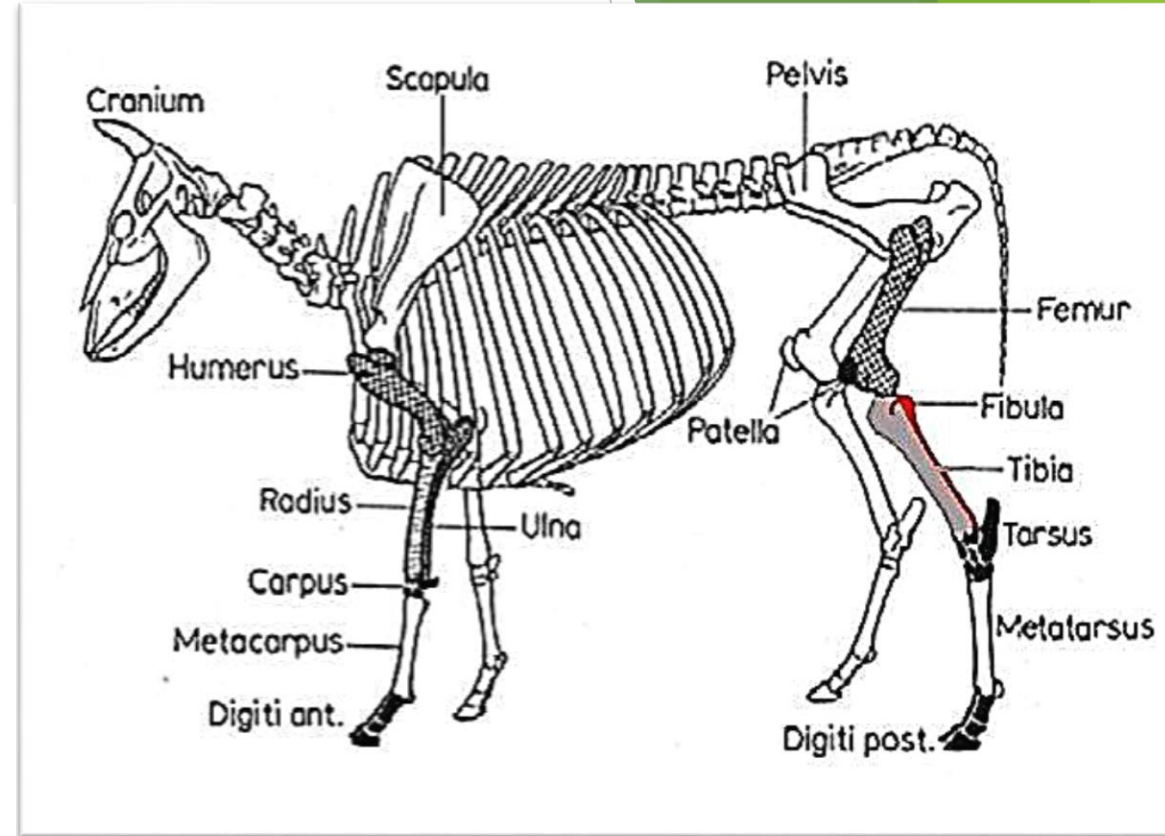
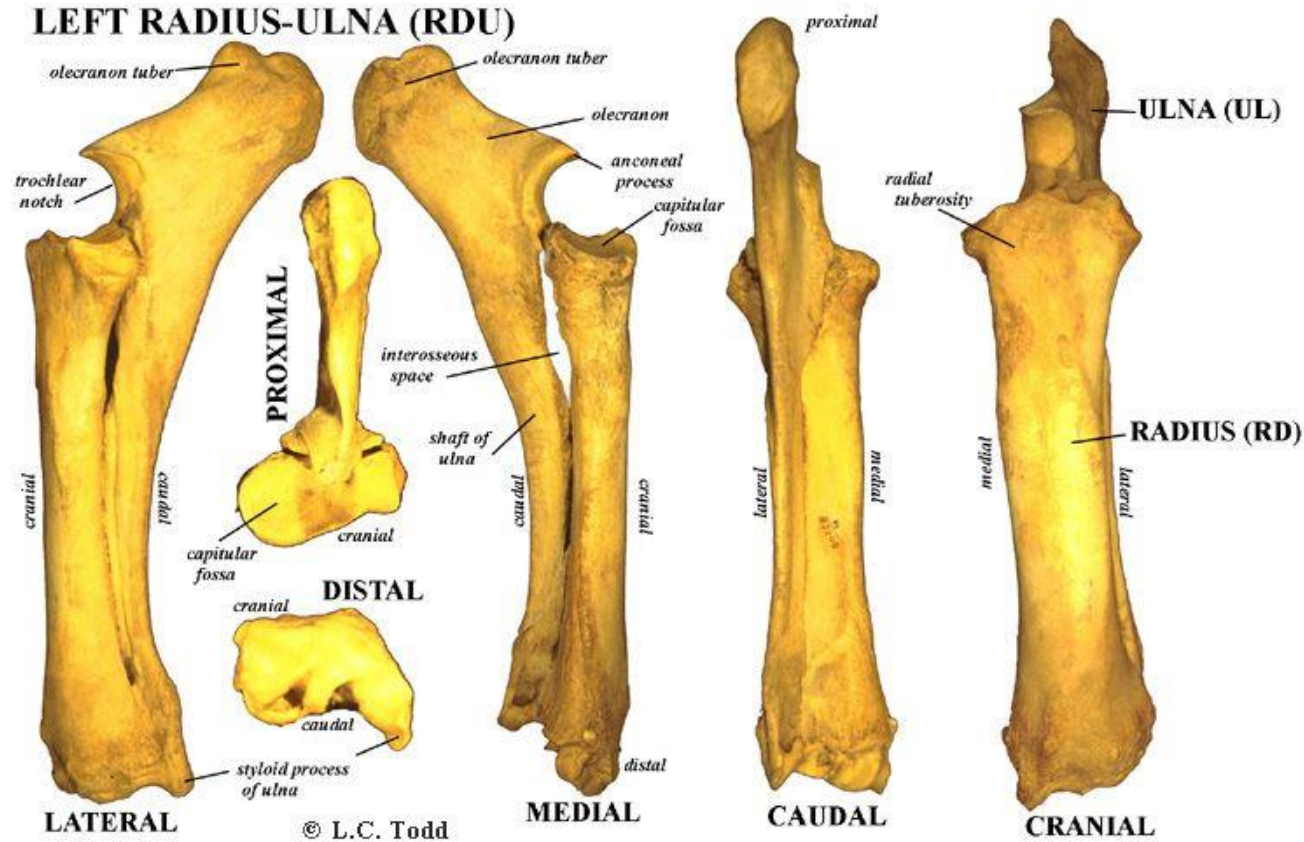


# Scapula: Kürek kemiği



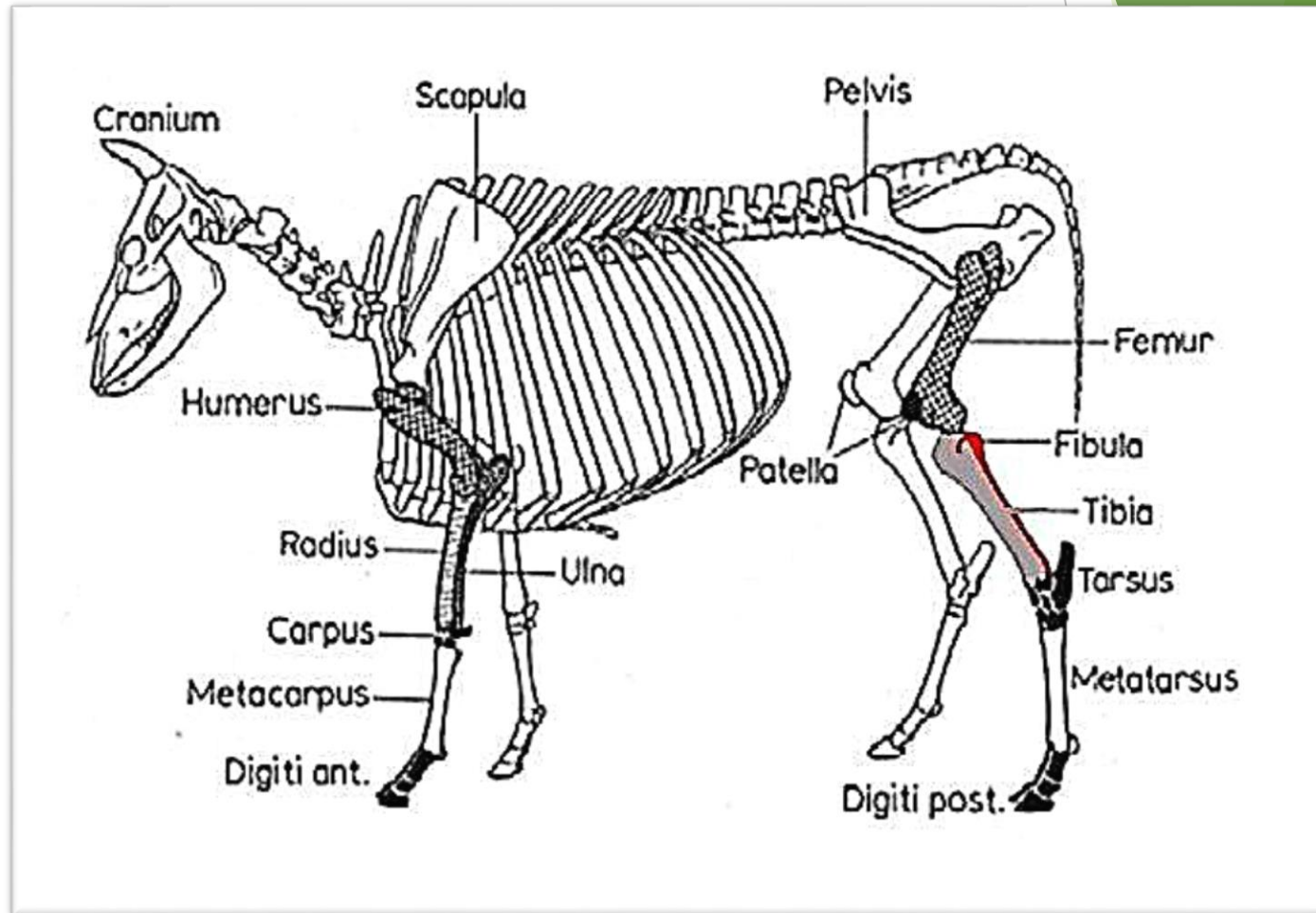


# Ulna/Radius: Ön üye alt bacak





# Tibia/Fibula: Arka üye alt bacak





Vertebrae: Omur

