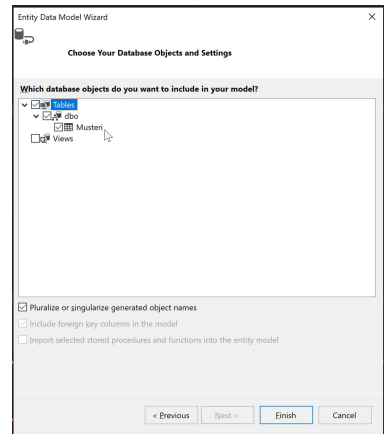
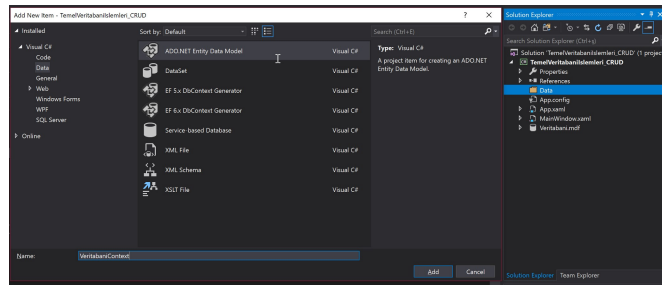
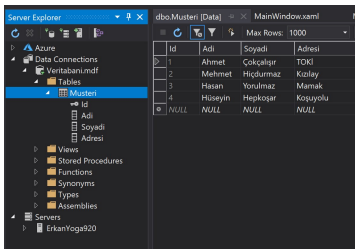
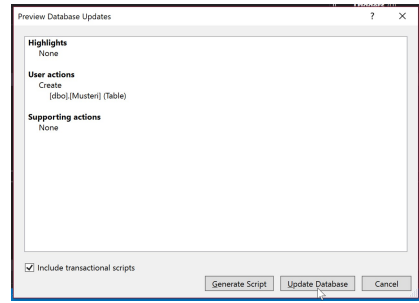
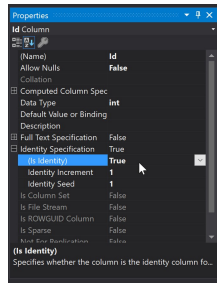
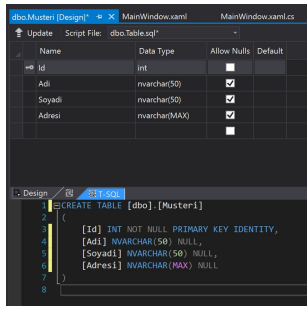
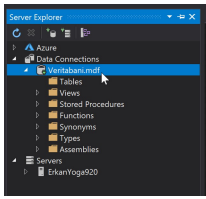
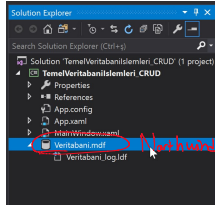
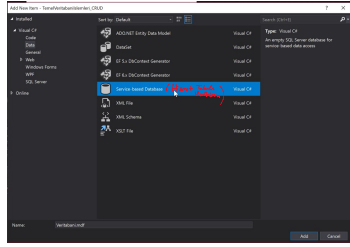
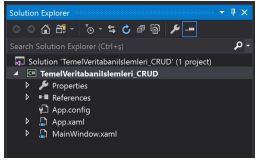
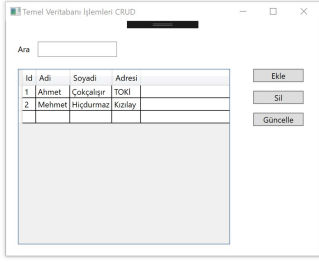
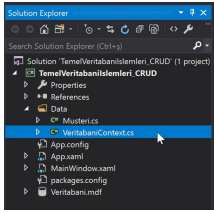


# 11 - CRUD (Temel Veritabanı İşlemleri) (Create İşlemi)

18 Mayıs 2018 Cuma 09:40

Create Read Update Delete





```

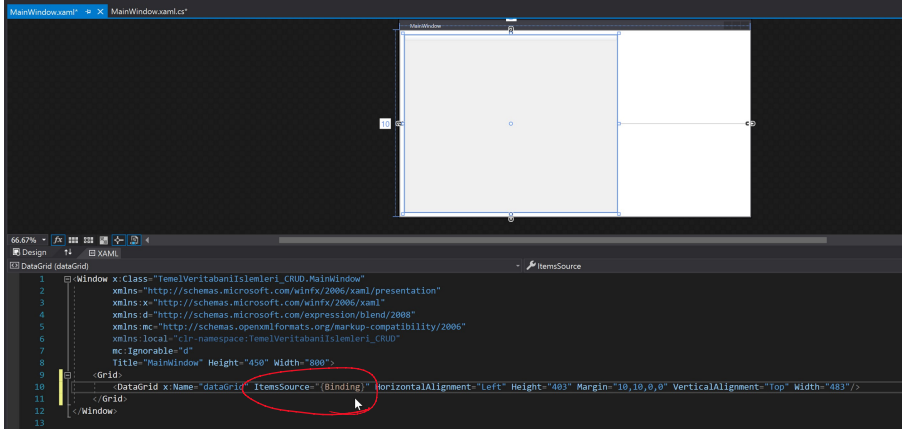
1 namespace TemeVeritabanisilemleri_CRUD.Data
2 {
3     using System;
4     using System.Collections.Generic;
5     using System.ComponentModel.DataAnnotations;
6     using System.ComponentModel.DataAnnotations.Schema;
7     using System.Data.Entity.Spatial;
8
9     [Table("Musteri")]
10    public partial class Musteri
11    {
12        public int Id { get; set; }
13
14        [StringLength(50)]
15        public string Adl { get; set; }
16
17        [StringLength(50)]
18        public string Soyadi { get; set; }
19
20        public string Adresi { get; set; }
21
22    }
23

```

```

1 namespace TemeVeritabanisilemleri_CRUD.Data
2 {
3     using System;
4     using System.Data.Entity;
5     using System.ComponentModel.DataAnnotations.Schema;
6     using System.Linq;
7
8     public partial class VeritabanContext : DbContext
9     {
10        public VeritabanContext()
11        {
12            base("name=VeritabanContext");
13        }
14
15        public virtual DbSet<Musteri> Musteris { get; set; }
16
17        protected override void OnModelCreating(DbModelBuilder modelBuilder)
18        {
19        }
20
21    }

```

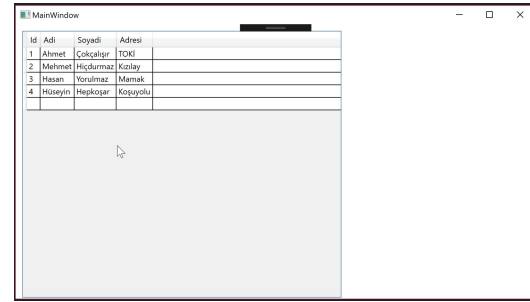


```

public partial class MainWindow : Window
{
    VeritabanContext db = new VeritabanContext();

    public MainWindow()
    {
        InitializeComponent();
        this.DataContext = db.Musteris.ToList();
    }
}

```

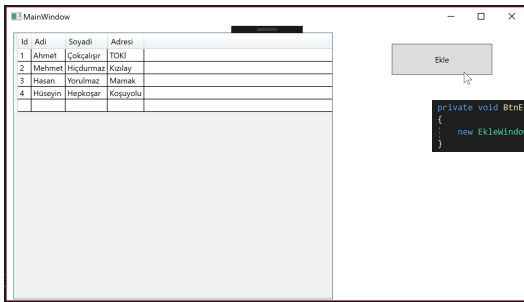


2. TWR

```

Title="EkleWindow" Height="400" Width="600">
<Grid>
<Label Content="Adı" HorizontalAlignment="Left" Margin="26,31,0,0" VerticalAlignment="Top"/>
<Label Content="Soyadı" HorizontalAlignment="Left" Margin="26,82,0,0" VerticalAlignment="Top"/>
<Label Content="Adresi" HorizontalAlignment="Left" Margin="26,138,0,0" VerticalAlignment="Top"/>
<TextBox HorizontalAlignment="Left" Height="24" Margin="104,36,0,0" TextWrapping="Wrap" Text="TextBox" VerticalAlignment="Top" Width="254"/>
<TextBox HorizontalAlignment="Left" Height="22" Margin="104,86,0,0" TextWrapping="Wrap" Text="TextBox" VerticalAlignment="Top" Width="254"/>
<TextBox HorizontalAlignment="Left" Height="124" Margin="104,142,0,0" TextWrapping="Wrap" Text="TextBox" VerticalAlignment="Top" Width="454"/>
<Button x:Name="btnTamam" Content="Tamam" HorizontalAlignment="Left" Margin="436,296,0,0" VerticalAlignment="Top" Width="120" Height="34"/>
<Button x:Name="btnIptal" Content="Iptal" HorizontalAlignment="Left" Margin="294,296,0,0" VerticalAlignment="Top" Width="120" Height="34"/>
</Grid>

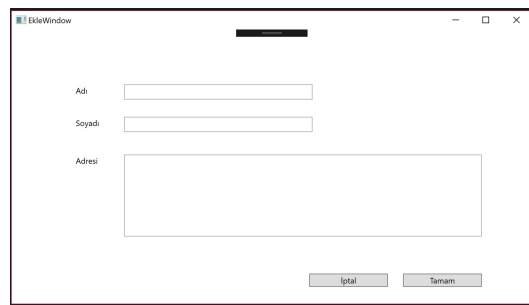
```

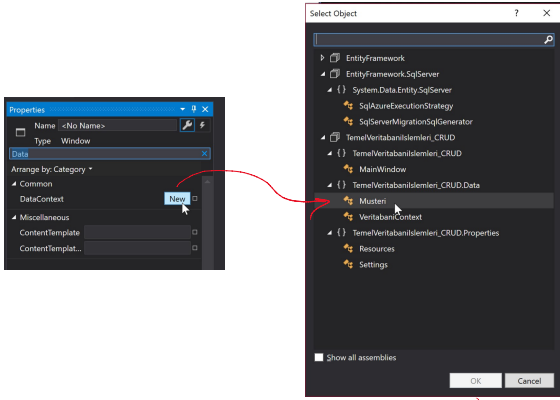


```

private void BtnEkle_Click(object sender, RoutedEventArgs e)
{
    new EkleWindow().ShowDialog();
}

```



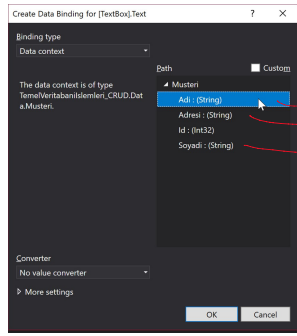


```

<Window
  xmlns="http://schemas.microsoft.com/winfx/2006/xaml/presentation"
  xmlns:x="http://schemas.microsoft.com/winfx/2006/xaml"
  xmlns:d="http://schemas.microsoft.com/expression/blend/2008"
  xmlns:mc="http://schemas.openxmlformats.org/markup-compatibility/2006"
  xmlns:local="clr-namespace:TemelVeritabaniIslemleri_CRUD"
  xmlns:Data="clr-namespace:TemelVeritabaniIslemleri_CRUD.Data" x:Class="TemelVeritabaniIslemleri_CRUD.EkleWindow"
  mc:Ignorable="d">
  EkleWindow
  450
  800
  
    
  
  
    
    
    
    
    
    
    
    
  
</Window>

```

*Hepsini DataContext ile paketleyelim*



```

public partial class EkleWindow : Window
{
    private readonly MainWindow mainWindow;
    public EkleWindow(MainWindow mainWindow) // EkleWindow'unun yapici methodu
    {
        InitializeComponent();
        this.mainWindow = mainWindow;
    }
    private void BtnTamaam_Click(object sender, RoutedEventArgs e)
    {
    }
}

```

*Tamamle*

```

MainWindow.cs deki
private void BtnEkle_Click(object sender, RoutedEventArgs e)
{
    new EkleWindow().ShowDialog();
}

private void BtnEkle_Click(object sender, RoutedEventArgs e)
{
    new EkleWindow(this).ShowDialog();
}

```

```

private void BtnTamaam_Click(object sender, RoutedEventArgs e)
{
    mainWindow.db.Musteris.Add((Musteri)this.DataContext);
    mainWindow.db.SaveChanges(); //Gerçek veritabanına kayıt etmesi için
    mainWindow.VerilerGuncelle();
    this.Close();
}

```

```

public partial class MainWindow : Window
{
    internal VeritabaniContext db = new VeritabaniContext();
    public MainWindow() //yapici method
    {
        InitializeComponent();
        VerilerGuncelle();
    }
    internal void VerilerGuncelle()
    {
        this.DataContext = db.Musteris.ToList();
    }
    private void BtnEkle_Click(object sender, RoutedEventArgs e)
    {
        new EkleWindow(this).ShowDialog();
    }
}

```