

JEOMORFOLOİK ANALİZ II

Yrd. Doç. Dr. Erkan Yılmaz

jeomorfoloji

Topografik Analiz

- a) Ölçek
- b) Eşaralık
- c) Akarsu ve Dere Çizimi

Jeolojik Analiz

- a) Profil Analizleri
- b) Kesit Oluşturma

Jeomorfolojik Analiz

- a) İç ve Dış Bükey eğim kırıklıkları
- b) Jeomorfoloji Haritası
- c) Paleocoğrafik Evrim

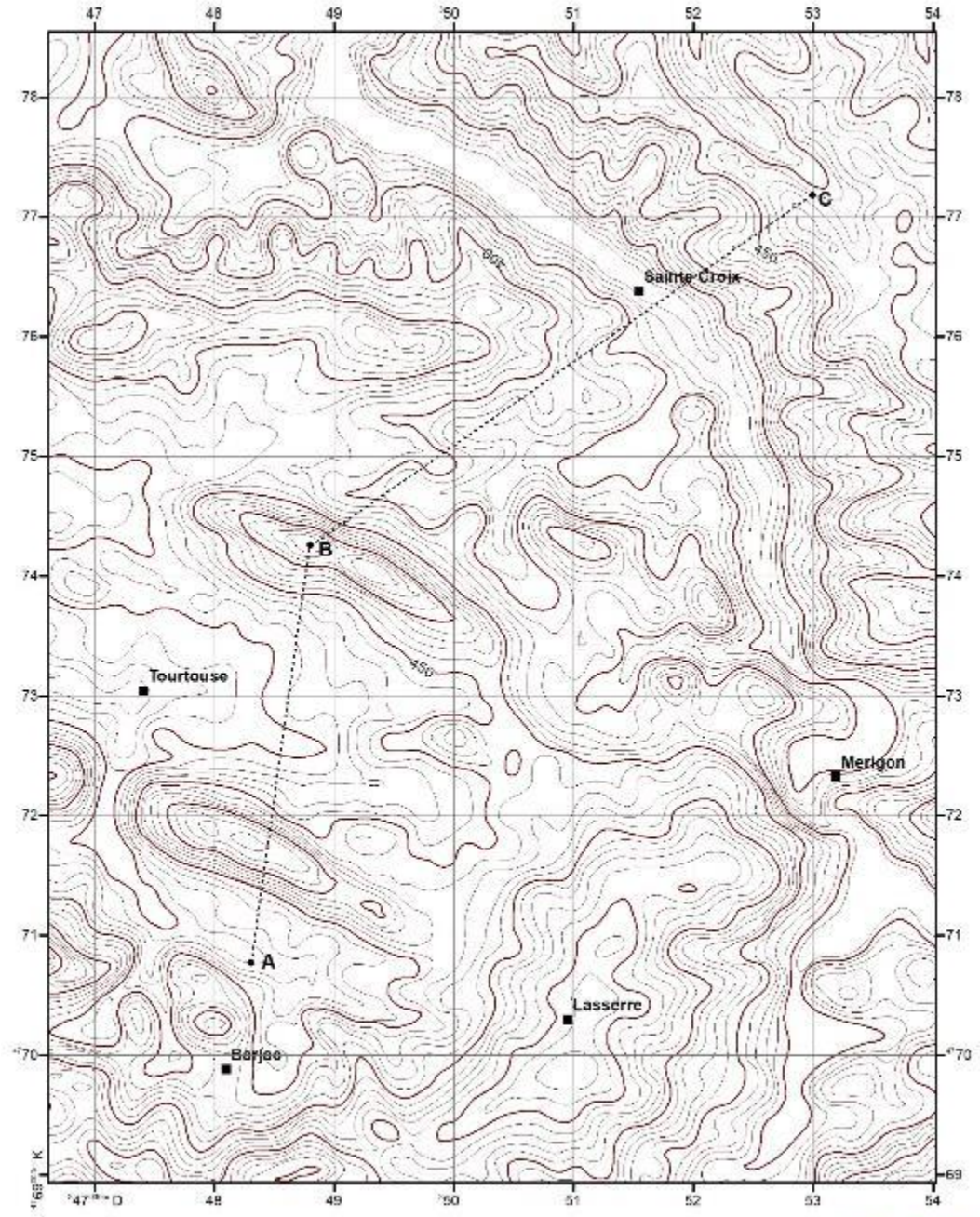
Topografik Analiz

a) Ölçek

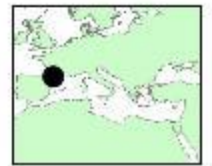
b) Eşaralık

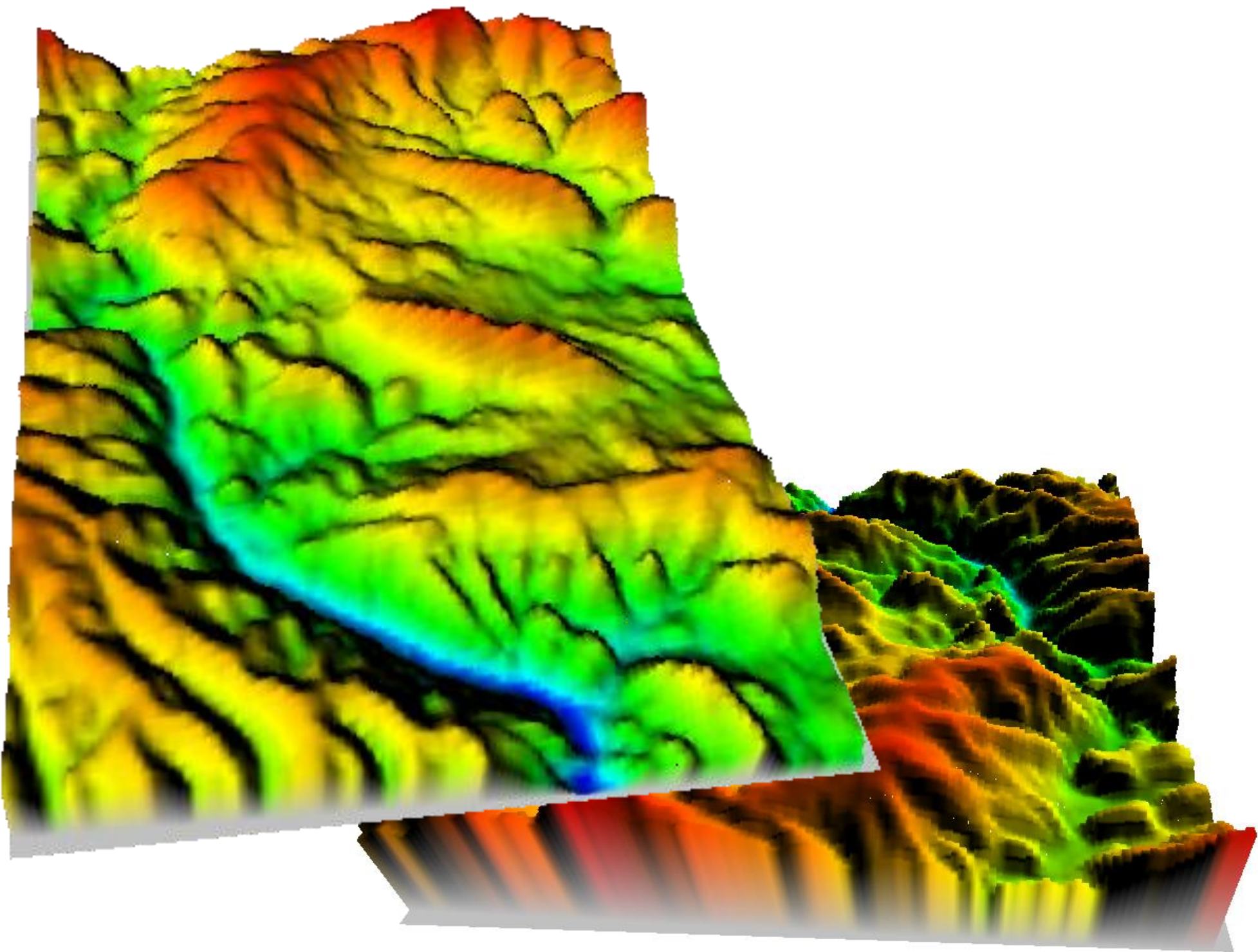
c) Akarsu ve Dere Çizimi

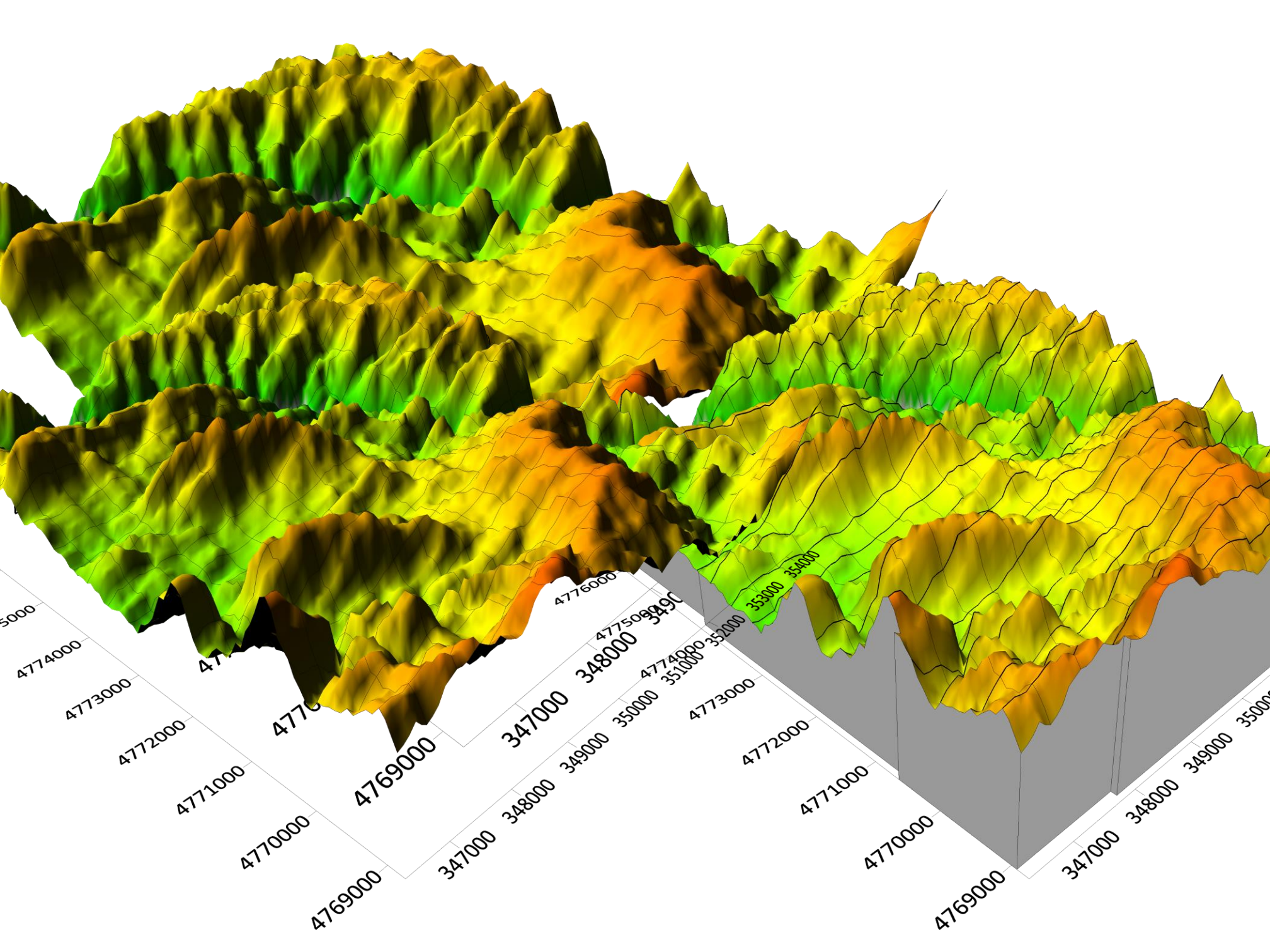
$$\text{Ölçek} = \frac{\text{Harita Ölçeği Değeri}}{\text{Ölçeğin Gerçek Değeri}}$$



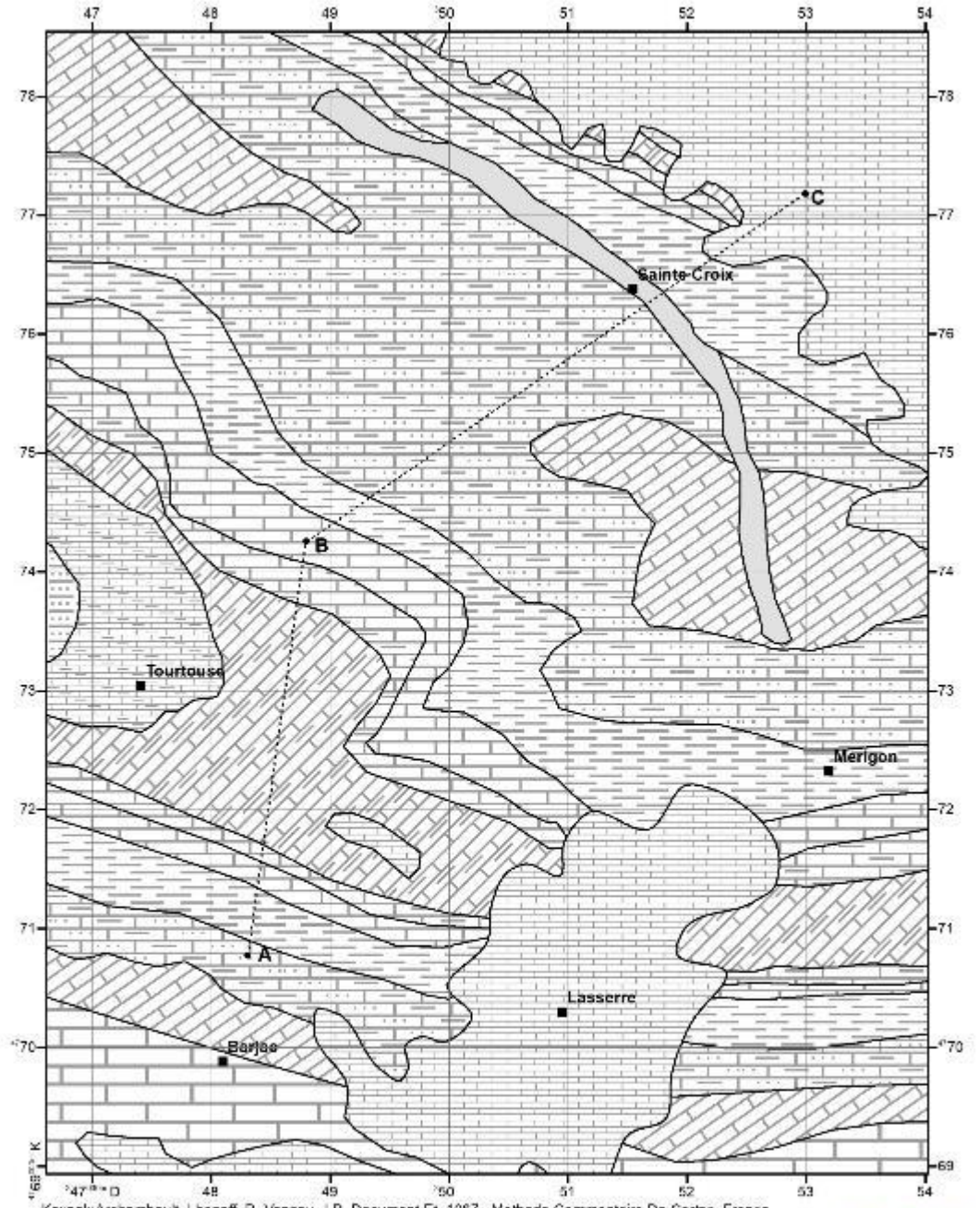
Ölçek?
Eşaralık?
A-A' Hattı Kesiti
B-B' Hattı Kesiti





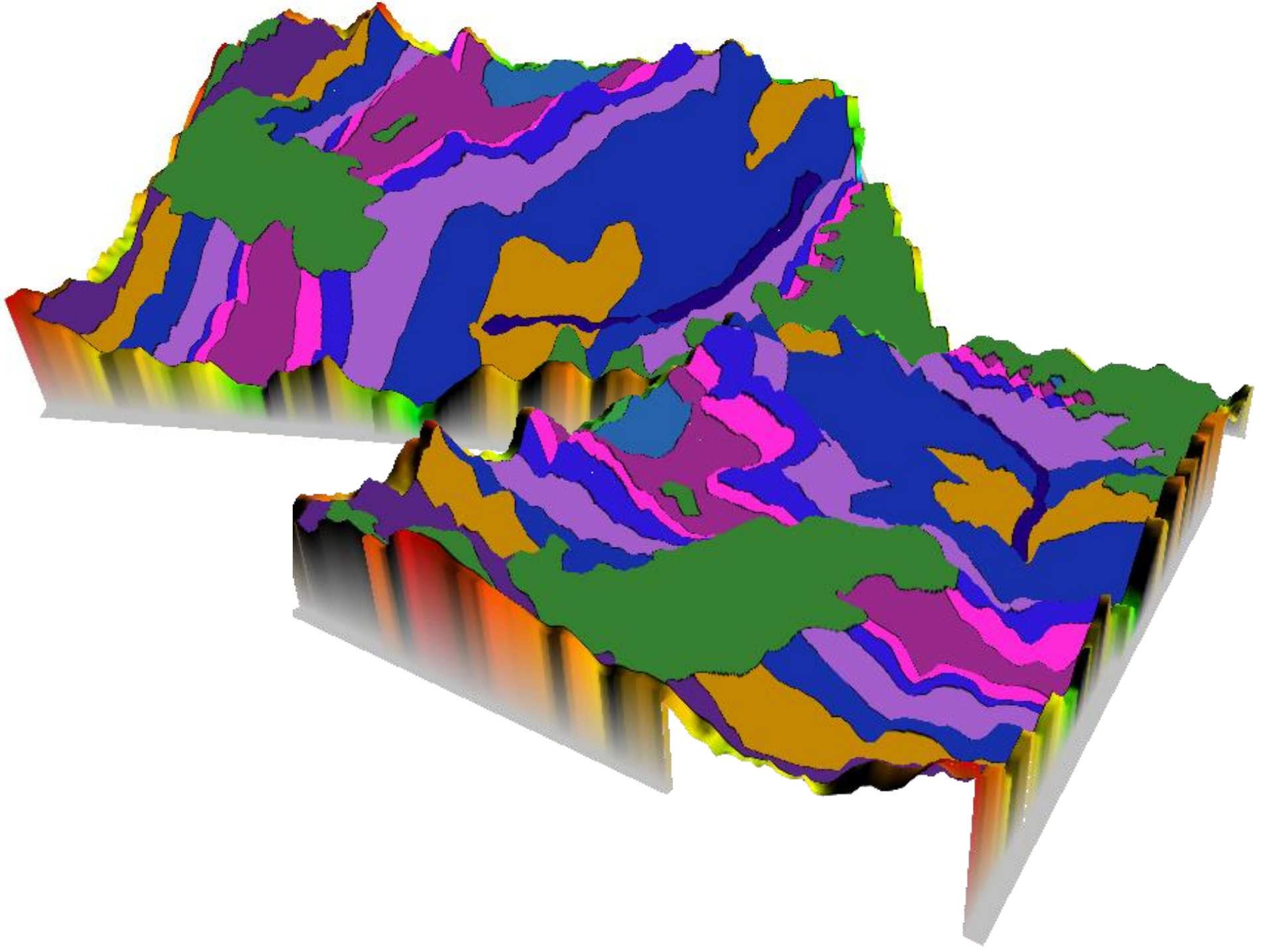


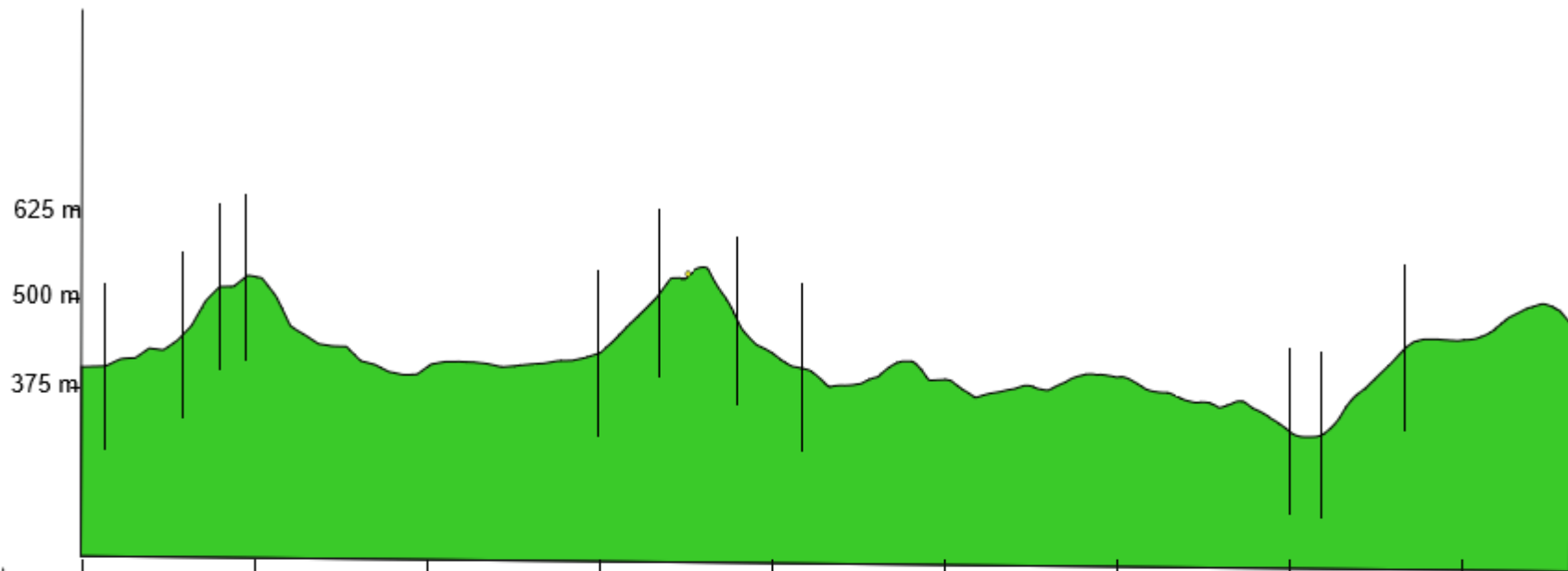
Jeoloji Haritası



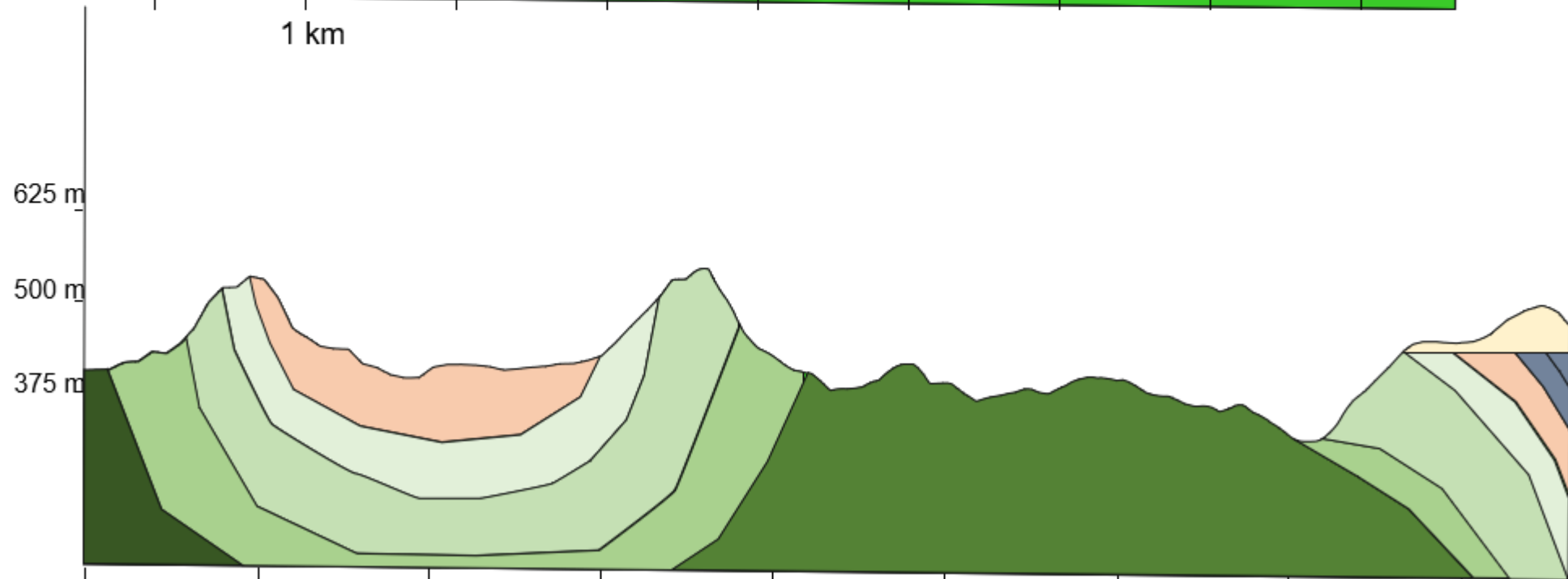
Kaynak: Archambault, Lhenaff, R. Vannoy, J.R. Document Et, 1967. Méthode Commentaire De Cartes, France





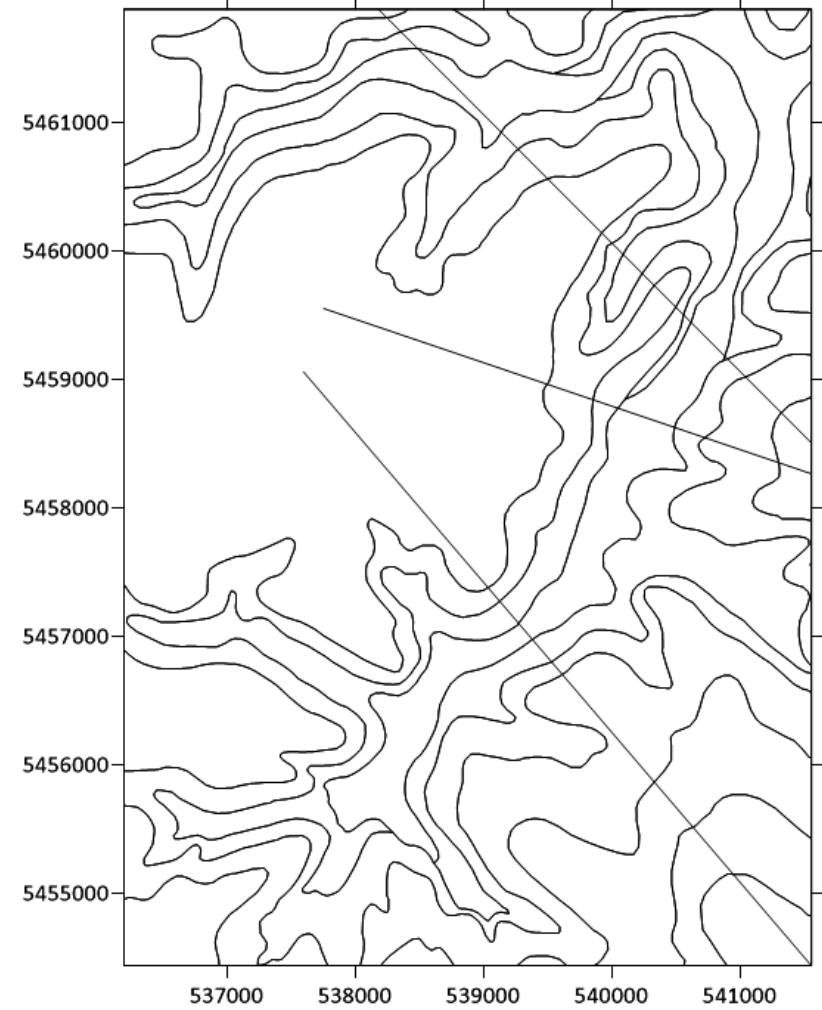
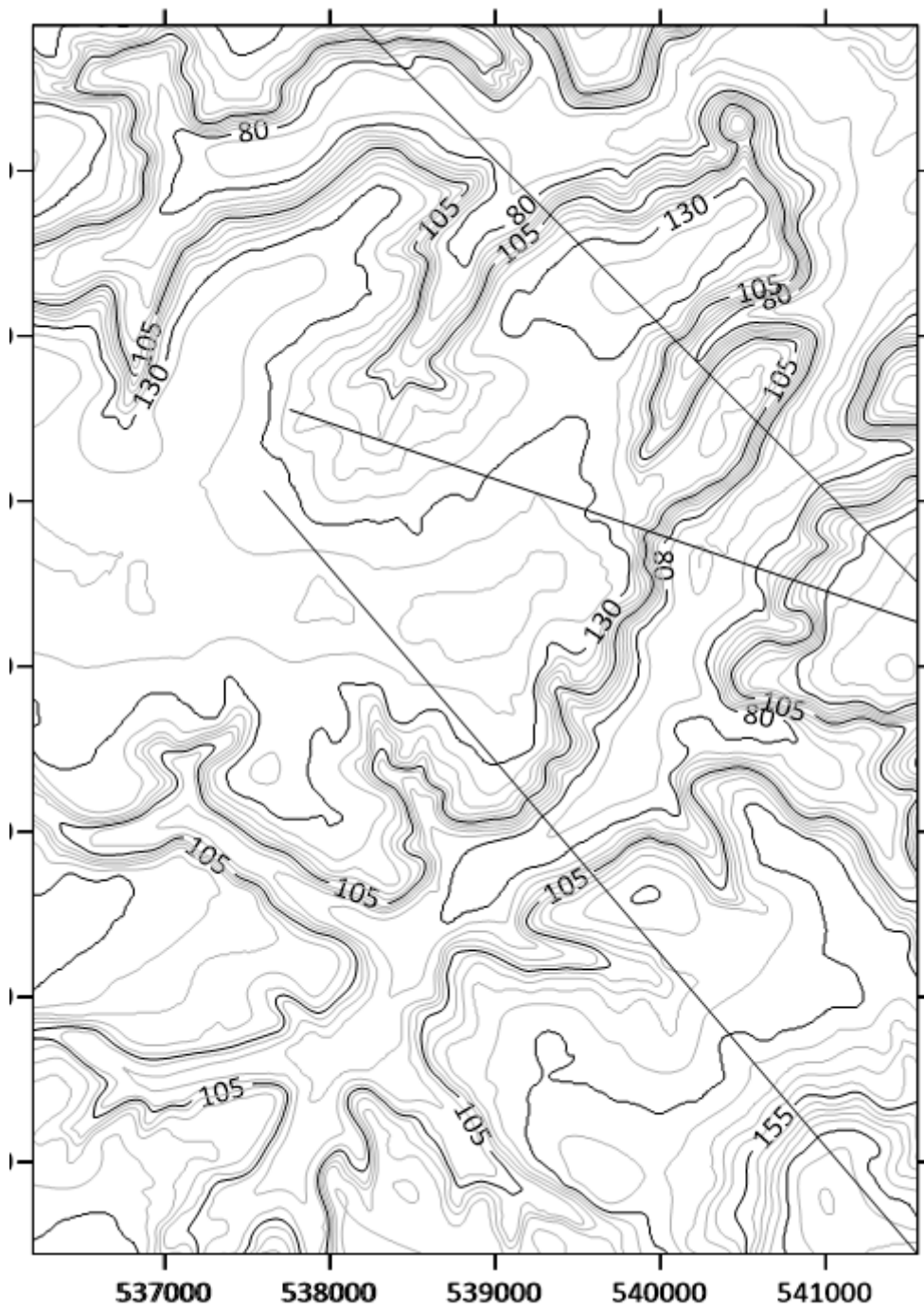


1 km

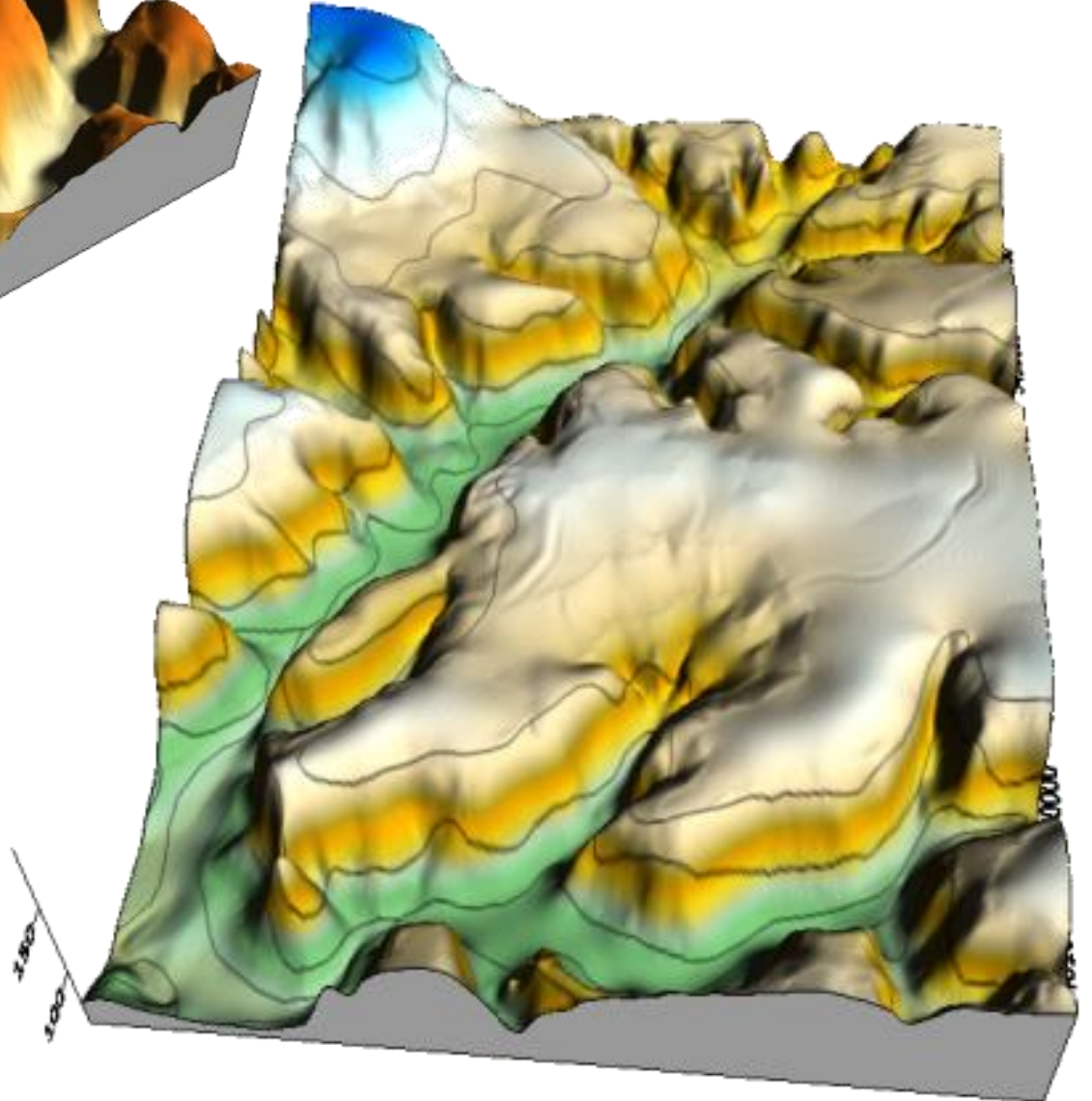
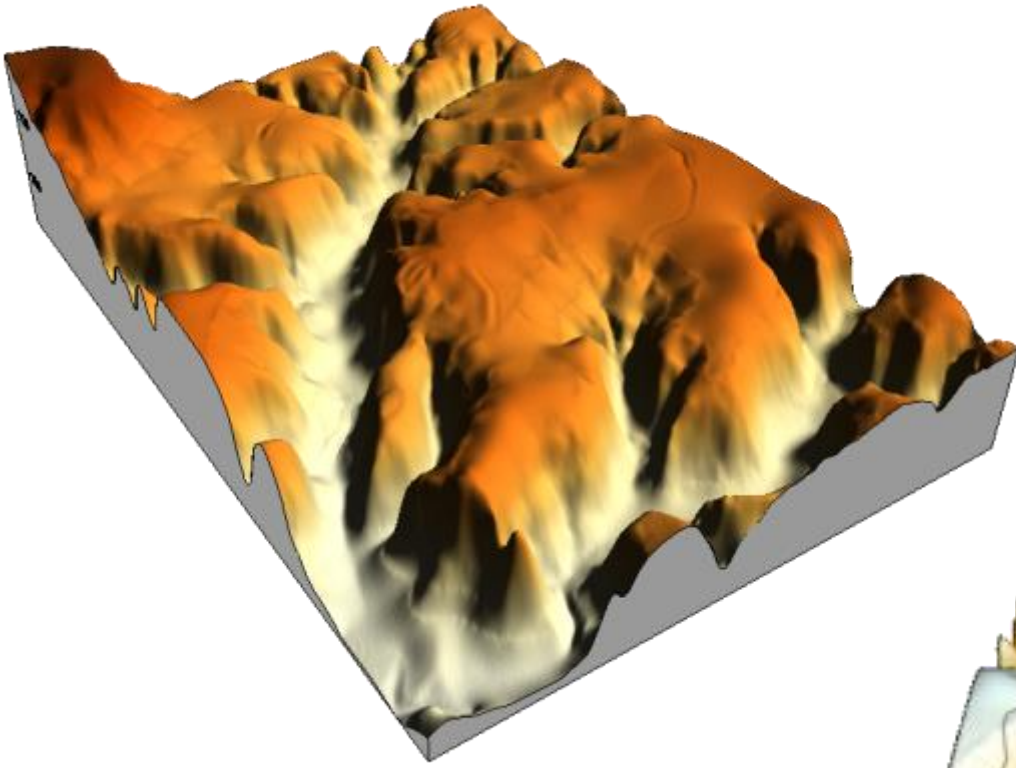


1 km

Topografya
Ve
Jeoloji Haritası

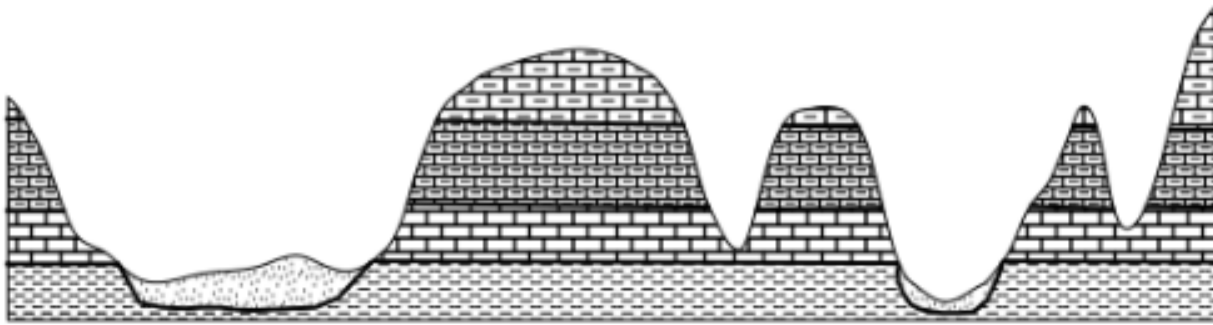


3B Topografya ve
3B Jeoloji

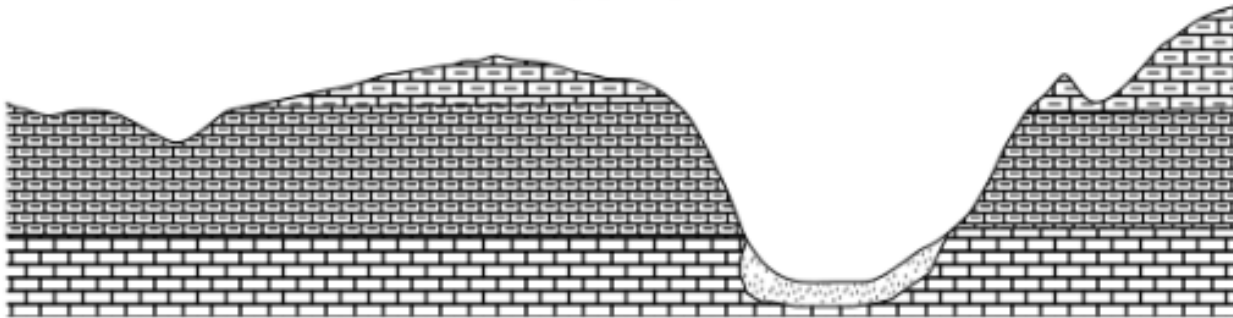


Profil ve Kesitler

A-B Profili



C-D Profili



E-F Profil Hattı

