





Photodocumentation of the Chapel of the Holy Trinity, Žminj (Croatia), 15th century; Photo: 2014, HRZ (Ivan Srša); Weyer, E. (ed.), (2015), *EwaGlos:European Illustrated Glossary Of Conservation Terms For Wall Paintings And Architectural Surfaces*, Petersberg: Hornemann Institute; 260.



Documentation of investigated area, Humpis-Quartier, Ravensburg (Germany), 1445; Photo: 2009, RPS (Dörthe Jakobs); Weyer, E. (ed.), (2015), EwaGlos:European Illustrated Glossary Of Conservation Terms For Wall Paintings And Architectural Surfaces, Petersberg: Hornemann Institute; 246.



Areas of uncovering showing successive paint layers applied after the construction of the show flat in La Cité Radieuse by Le Corbusier, Marseille (France), 1952; Photo: 2015, CICRP(Odile Guillon); Weyer, E. (ed.), (2015), EwaGlos:European Illustrated Glossary Of Conservation Terms For Wall Paintings And Architectural Surfaces, Petersberg: Hornemann Institute; 248.

1.2. S1-I-5 JUG
dokumentacija zatecenog stanja

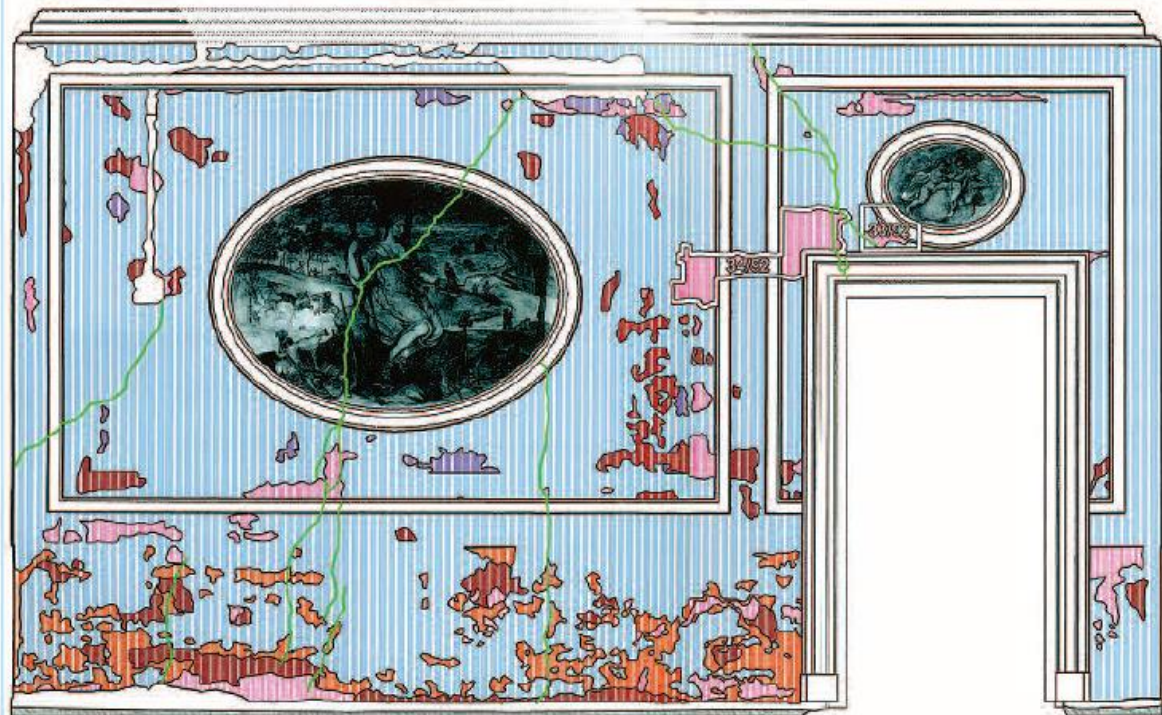
legenda: slikani / bojeni slojevi

-  sando iz 1992. g.
-  2. slikani sloj s preslicima
-  1. bojeni nalic
-  3. bojeni nalic
-  4. bojeni nalic
-  6. bojeni nalic
-  posljednji bojeni nalic

loci



naslovnik	Dubrovnik
opština	Pločevo Selo
naslov zgrade	seka S. Jurnani
adresa/zadnja adresa	
autor	inženjer
osobno ime autora	2. pol. 18. st.
broj desija	1567
vođa/radnik	I. Ena
mjera	1:20
datum	11. prosinac 2002.
vrsta tiska	01/001
autorizirani mjera	B. Maras, C. Pasi, V. Štalić, T. Klačić, I. Demić
crtao	B. Maras, I. Demić
obradio	R. Mavar



Graphic documentation of architectural surfaces, Kerša Palace, Dubrovnik (Croatia), 18th century; Photo: 2002, HRZ (Ramona Mavar); Weyer, E. (ed.), (2015), EwaGlos:European Illustrated Glossary Of Conservation Terms For Wall Paintings And Architectural Surfaces, Petersberg: Hornemann Institute; 250.



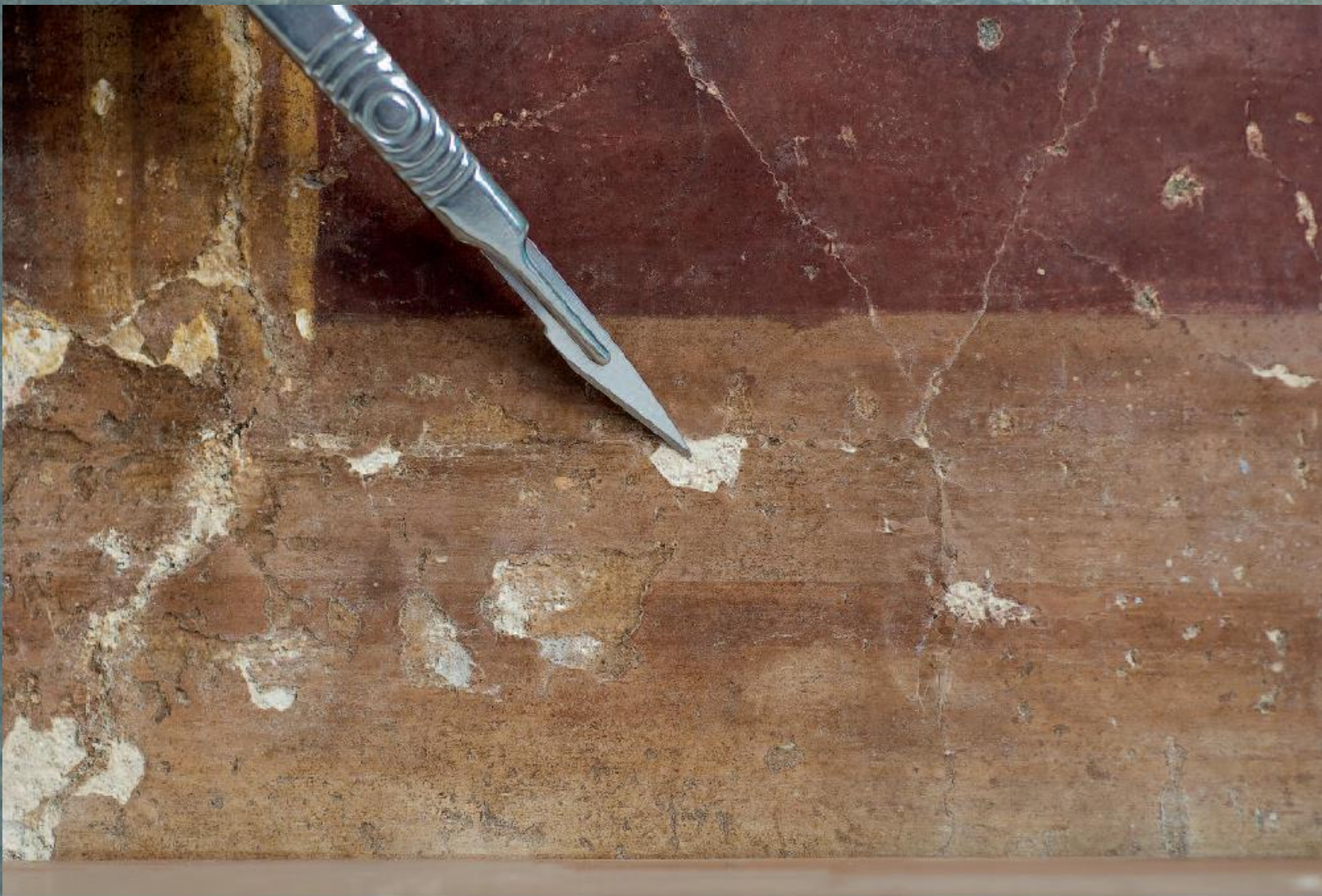
11. Jahrhundert	Von Architekt Hase überarbeitete Bereiche
12. Jahrhundert	Wiederaufbau nach 1945
13. Jahrhundert	Wiederaufbau nach 1945, Spolienmaterial verschiedener Bauphasen
16. Jahrhundert	Nicht sicher datierbar
17./18. Jahrhundert	Zwielverwendung älterer Säulen aus verschiedenen Bauphasen (mit hellen Umrislinien gekennzeichnet)
19. Jahrhundert (Architekt Hase)	

Fachhochschule Hildesheim/Holzminen/Göttingen

St. Michaelis Hildesheim Kreuzgang Westflügel
Predigerseminar

Kartierung zur chronologischen
Einordnung der Bauphasen
Westwand, Joch 1-8

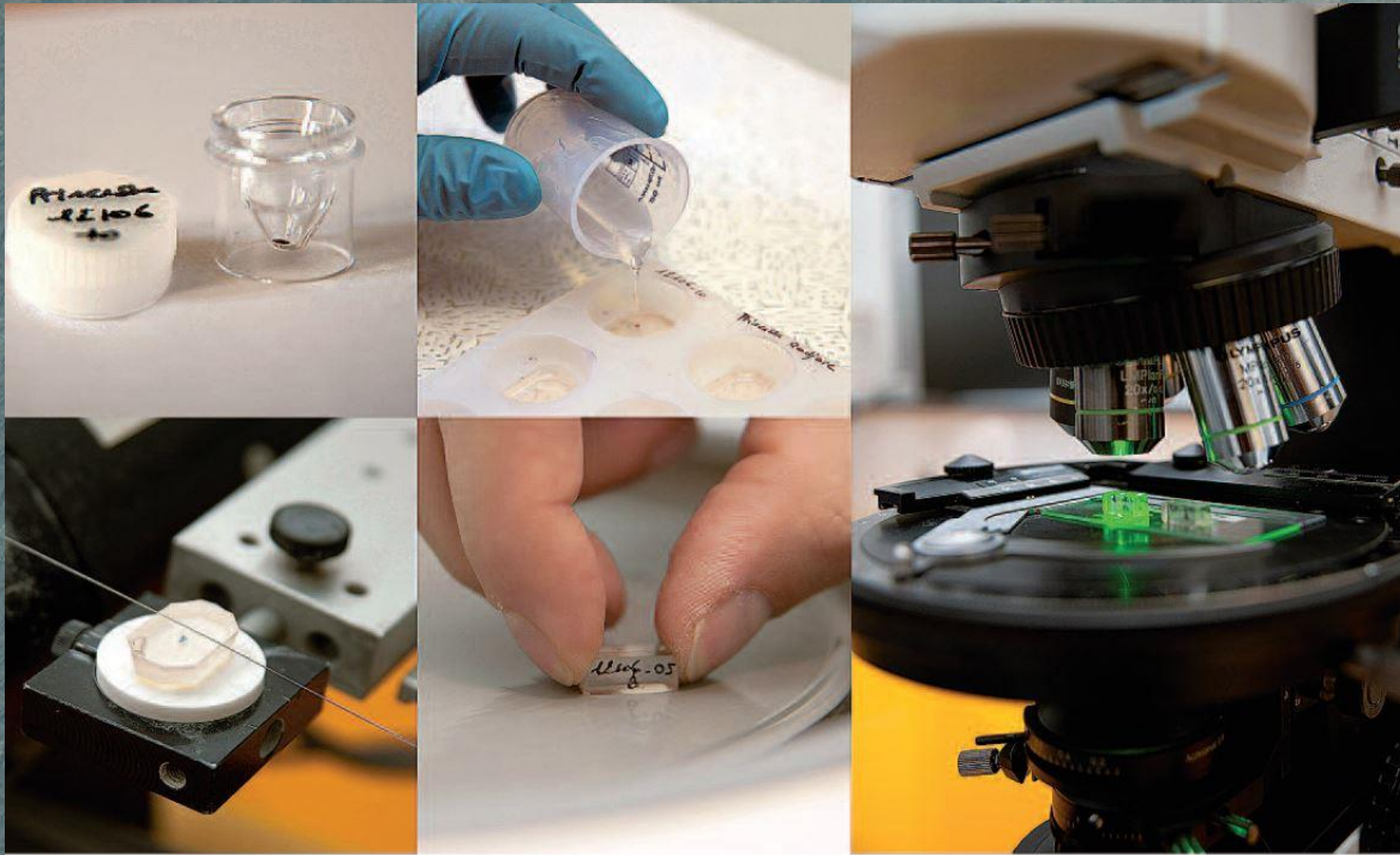
Chronological sequence of different construction phases resulting from an exercise in building archaeology, Cloister of St. Michael, Hildesheim (Germany), 11-13th century; Mapping: 2000, HAWK; Weyer, E. (ed.), (2015), EwaGlos:European Illustrated Glossary Of Conservation Terms For Wall Paintings And Architectural Surfaces, Petersberg: Hornemann Institute; 244.



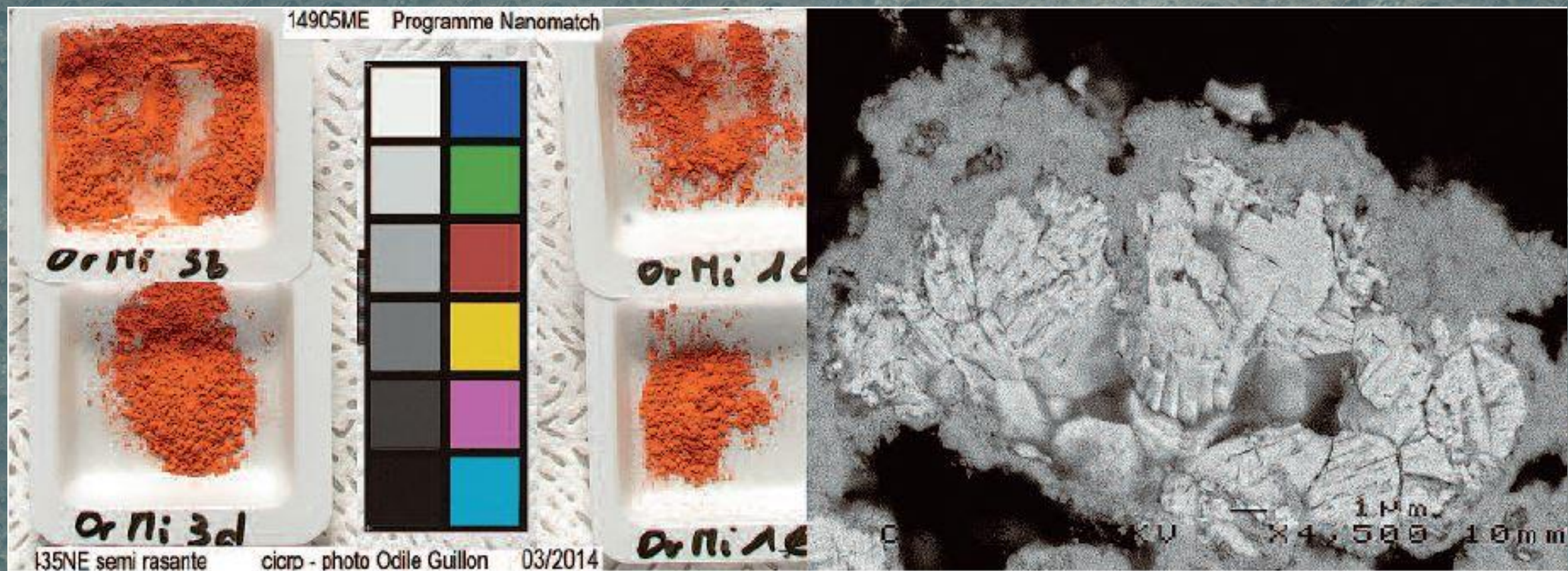
Sampling location, exedra of Villa Kerylos, Beaulieu-sur-Mer (France), 40 BC; Photo: 2008, CICRP (Odile Guillon); Weyer, E. (ed.), (2015), *EwaGlos:European Illustrated Glossary Of Conservation Terms For Wall Paintings And Architectural Surfaces*, Petersberg: Hornemann Institute; 266.



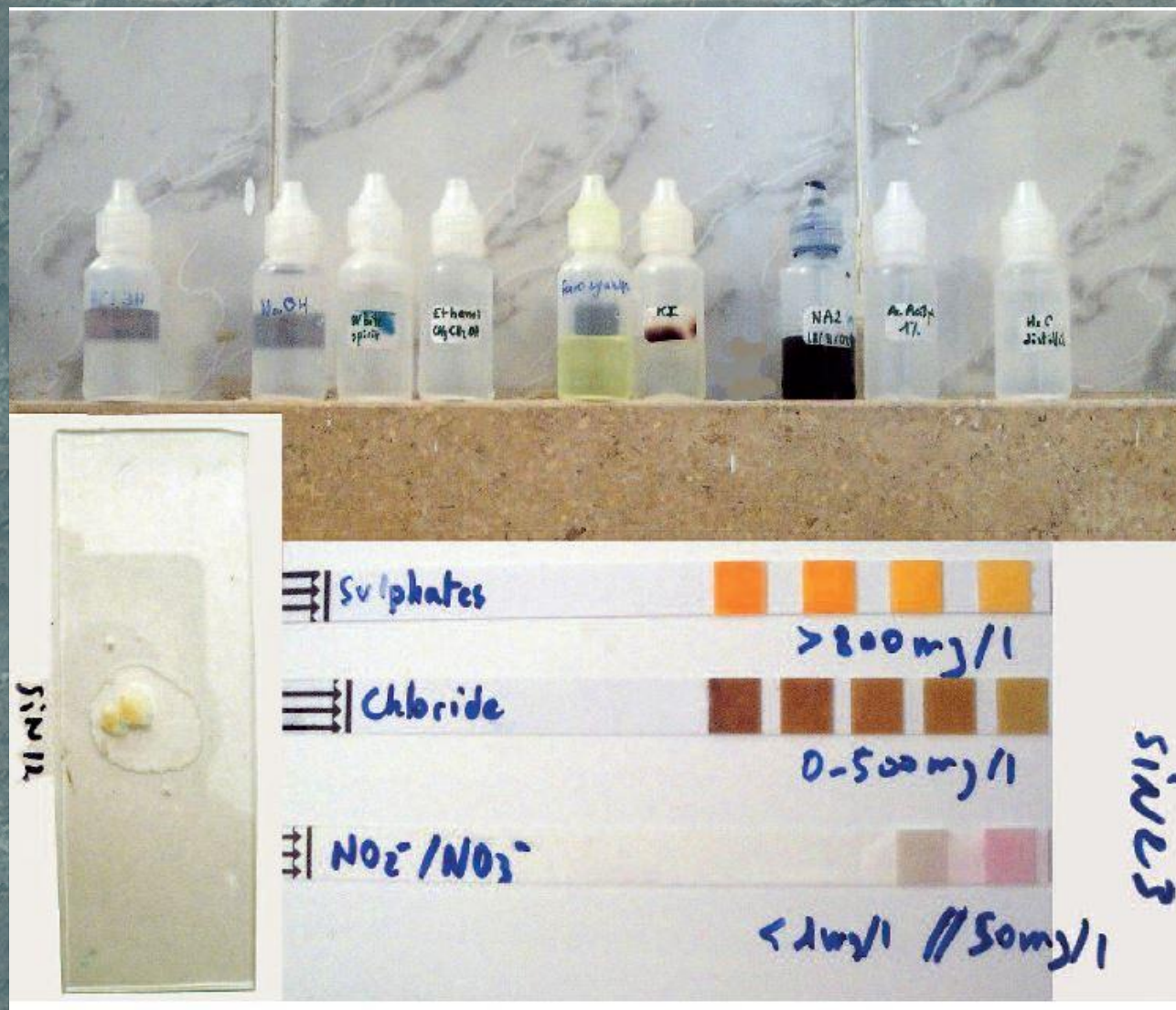
Drill core sampling of a restoration render, Chapel of Notre Dame d'Entrevignes, Sigale (France), 16th century;
Photo: 2013, CICRP (Jean-Marc Vallet); Weyer, E. (ed.), (2015), EwaGlos:European Illustrated Glossary Of
Conservation Terms For Wall Paintings And Architectural Surfaces, Petersberg: Hornemann Institute; 268.



Making a cross section (from sampling the paint to observation under a microscope); Photos: 2015, CICRP (Nicolas Bouillon); Weyer, E. (ed.), (2015), EwaGlos:European Illustrated Glossary Of Conservation Terms For Wall Paintings And Architectural Surfaces, Petersberg: Hornemann Institute; 270.



Minium: powder (left), a grain viewed by SEM-backscattered electrons (right); Photos: CICRP (Odile Guillon, Sébastien Aze); Weyer, E. (ed.), (2015), *EwaGlos:European Illustrated Glossary Of Conservation Terms For Wall Paintings And Architectural Surfaces*, Petersberg: Hornemann Institute; 284.



Chemical reagents (top), microchemical test (bottom, left), salt testing using chemical strips (bottom, right) on samples from Coptic wall paintings in a cave at the site of Hammâm Faraûn Sinaï (Egypt); Photos: 2010, CICRP (Jean-Marc Vallet); Weyer, E. (ed.), (2015), EwaGlos:European Illustrated Glossary Of Conservation Terms For Wall Paintings And Architectural Surfaces, Petersberg: Hornemann Institute; 286.