







Example of cleaning, wall painting by Dionis Vidal, Church of San Nicolás Obispo y San Pedro Mártir, Valencia (Spain), 1694-1700; Photo: 2014, UPV; Weyer, E. (ed.), (2015), *EwaGlos:European Illustrated Glossary Of Conservation Terms For Wall Paintings And Architectural Surfaces*, Petersberg: Hornemann Institute; 304.





Sacrificial render applied to a wall within the church of St. Michael, Ston (Croatia), 11th century; Photo: 2011, HRZ (Veronika Šulić); Weyer, E. (ed.), (2015), *EwaGlos: European Illustrated Glossary Of Conservation Terms For Wall Paintings And Architectural Surfaces*, Petersberg: Hornemann Institute; 308.





Application of a poultice, wall painting by Dionis Vidal, Church of San Nicolas Obispo y San Pedro Martir, Valencia (Spain), 1694-1700; Photo: 2014, UPV; Weyer, E. (ed.), (2015), EwaGlos:European Illustrated Glossary Of Conservation Terms For Wall Paintings And Architectural Surfaces, Petersberg: Hornemann Institute; 310.





Application of a consolidant, wall painting by Antonio A. Palomino/ Guilló, Church of Santos Juanes, Valencia (Spain), 1698-1700; Photo: 2009, UPV; Weyer, E. (ed.), (2015), *EwaGlos:European Illustrated Glossary Of Conservation Terms For Wall Paintings And Architectural Surfaces*, Petersberg: Hornemann Institute; 312.





Injection of an adhesive into a wall painting, Church of San Roque, Oliva (Spain), 20th century; Photo: 2009, UPV; Weyer, E. (ed.), (2015), *EwaGlos:European Illustrated Glossary Of Conservation Terms For Wall Paintings And Architectural Surfaces*, Petersberg: Hornemann Institute; 314.





Raked (left) and repointed joints (right) of brick masonry and parts of a sandstone epitaph, Church of St. Gabriel, Haseldorf (Germany), end of 16th century; Photo: 2007 (Sophie Haake); Weyer, E. (ed.), (2015), EwaGlos:European Illustrated Glossary Of Conservation Terms For Wall Paintings And Architectural Surfaces, Petersberg: Hornemann Institute; 320.





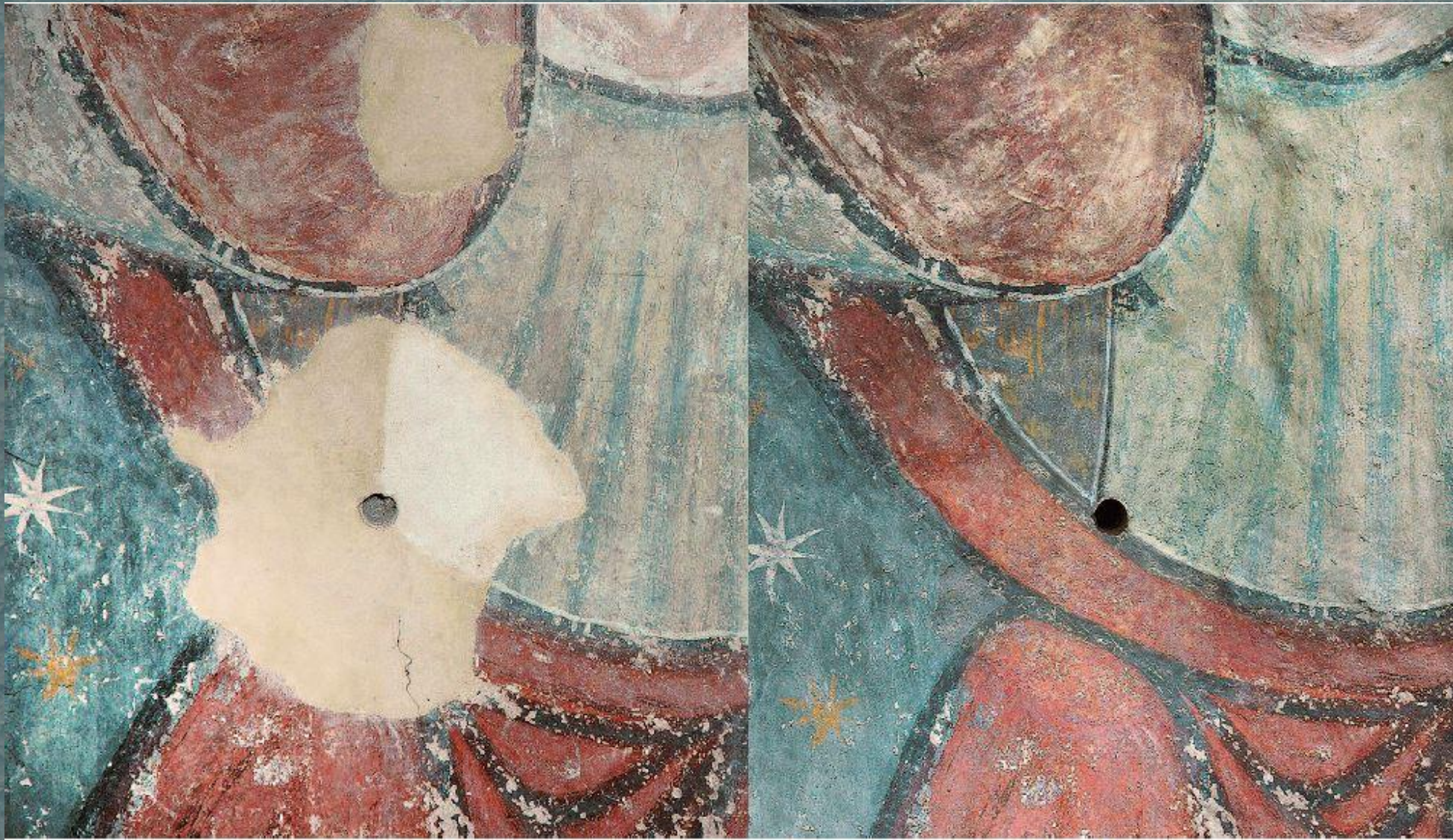
Mortar additions along the borders of historic plaster, Church of St. Vitus, Modestus and Crescentia, Trsteno (Croatia), 16/17th century; Photo: 2010, HRZ (Katarina Gavrilica); Weyer, E. (ed.), (2015), EwaGlos:European Illustrated Glossary Of Conservation Terms For Wall Paintings And Architectural Surfaces, Petersberg: Hornemann Institute; 322.





Carrying out reintegration, wall painting by Dionis Vidal, Church of San Nicolás Obispo y San Pedro Mártir, Valencia (Spain), 1694-1700; Photo: 2014, UPV; Weyer, E. (ed.), (2015), EwaGlos:European Illustrated Glossary Of Conservation Terms For Wall Paintings And Architectural Surfaces, Petersberg: Hornemann Institute; 328.





Before/after mimetic reintegration of an infill, Church of St. Lawrence, Požega (Croatia), 12th century; Photos: 2012, HRZ (Ivan Srša); Weyer, E. (ed.), (2015), *EwaGlos:European Illustrated Glossary Of Conservation Terms For Wall Paintings And Architectural Surfaces*, Petersberg: Hornemann Institute; 338.





Reintegration of a large infill on a wall painting, Church of Santa Maria Novella, Florence (Italy), ca. 2nd half of 14th century; Photo: 2015, HAWK (Ursula Schädler-Saub); Weyer, E. (ed.), (2015), EwaGlos:European Illustrated Glossary Of Conservation Terms For Wall Paintings And Architectural Surfaces, Petersberg: Hornemann Institute; 340.





Transfer of a wall painting by Antonio A. Palomino/ Guilló, after its restoration, to its original place: Church of Santos Juanes, Valencia (Spain), 1698-1700; Photo: 2009, UPV (Pilar Soriano Sancho); Weyer, E. (ed.), (2015), EwaGlos:European Illustrated Glossary Of Conservation Terms For Wall Paintings And Architectural Surfaces, Petersberg: Hornemann Institute; 346.