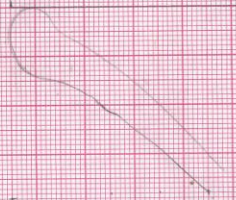


Ders Kapsamında, bu haftadan itibaren seramik çizimi uygulaması yapılmıştır.



21) NY15-C1 KMS, Seviye 4, +50 / ±0 cm.
08-08-15



NY15, C1KMS-521

0,33, 2 cm

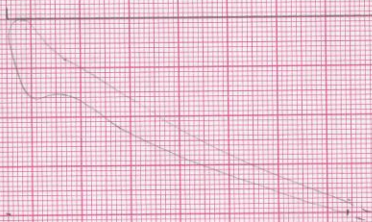
Orta sert nemür. Bol mika katm.

Az siyah katm.

H.R. : 2,5 - R 5/8

A.R. : 10 R 4/6

22) Apm katman (Seviye 4)



Orta sert nemür az pözeveli.

Kireg katm. Bol mika katm.

H.R. 2,5 - R 4/6

NY15, C1KMS-522

3,5 4,6

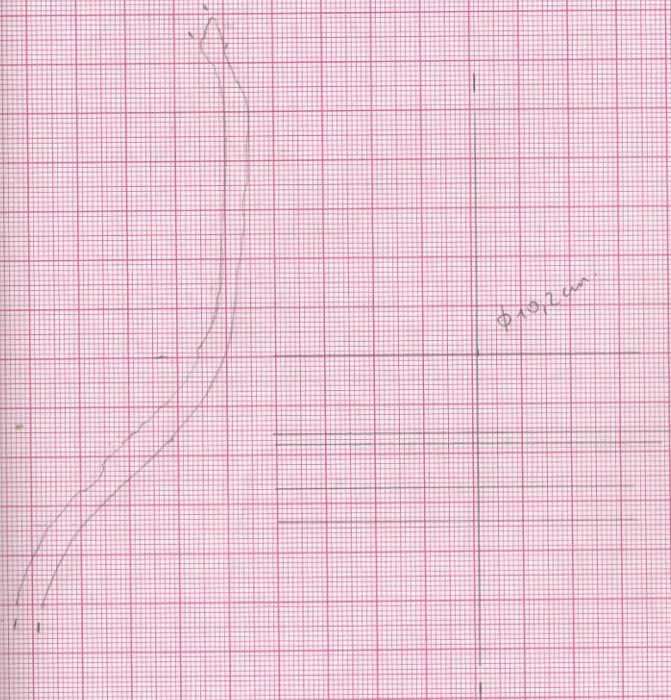
3,6 6,9

3,7 4,7

13

19) Aşağı katman (Sevne 3)

N415C1KMS.519



Orta sert hamur ² çieçeli. Bol mika,
kum ve kirek katları.
H.R. 2.57R 418 Astersiz.

V.L.1119