

Bu sunum "Orientalizan Dönem Seramiđi" dersi kapsamında kullanılmak üzere eğitim amaçlı hazırlanmıştır. Sunum içinde kullanılan resim, çizim, fotoğraf, harita gibi görseller muhtelif internet kaynaklarından ve kitaplardan temin edilmiştir. Bu imgelerin tamamının yayın hakları, fotoğrafları çeken kişilere aittir; eğitim amaçlı olarak kullanımını uluslararası kanunlarla serbesttir, ancak ticari ve benzeri kullanımları için fotoğraf sahiplerinden izin alınması gerekmektedir.

This presentation was prepared for educational purposes to be used during the lectures of the course "Orientalism Period Ceramic'. The visual material like paintings, drawings, photographs and maps are acquired through various internet resources and different books. All the copyrights of the indicated visual material belong to the related artists, writers and researchers who had conducted these works of art, books and the visual designs. The use of these materials for education purposes are under the protection of international laws, but for commercial uses the necessary permissions should be taken from the copyright holders of the works.

# Proto-Attik Seramik

## Kaynakça

- J.M. Cook: "Protoattic Pottery," BSA 35 (1934-1935) 166-179.
- K. Kübler, *Altattische Malerei*, (1950)
- R. M. Cook, *Greek Painted Pottery*, (1960)
- R. Hampe, *Ein frühattischer Grabfund*, (1960)
- *Corpus Vasorum Antiquorum* (Berlin 1)
- S.P. Morris, *The Black and White Style* (1984)
- J. Boardman, *Early Greek Vase Painting, a handbook*, (1998).



Athens

Long walls

Piraeus

Phaleron

A

B

C

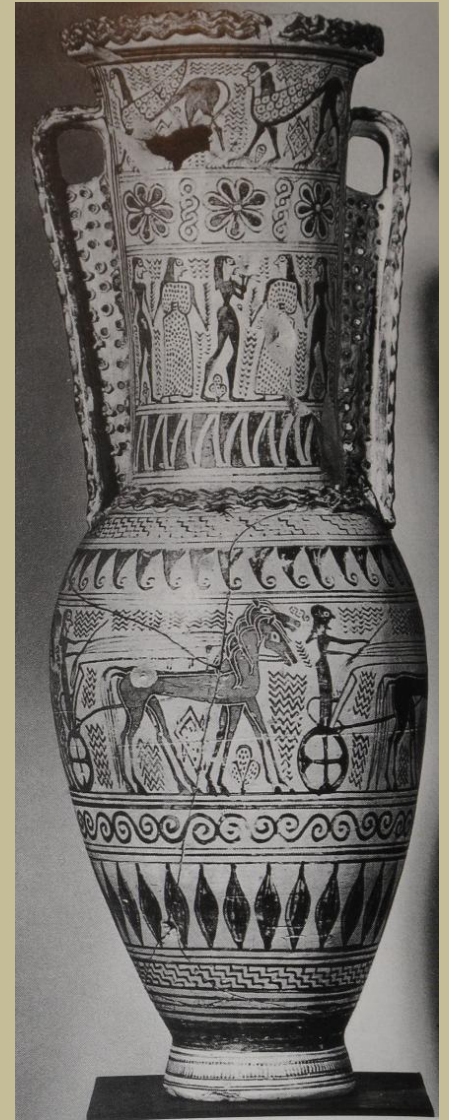
*Saronic Gulf*



# Erken Proto-Attik M.Ö. c.700-c.675



Analatos Ressamı  
EPA c.700-c.675

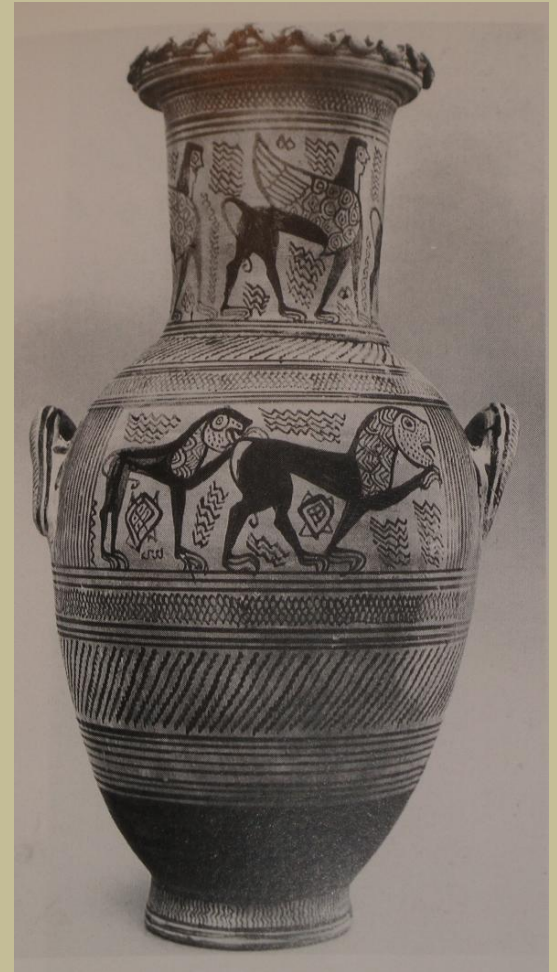






190 Attic (red-figure) kylix from Aegina by the Analatos P. (Munich 6077; H. 44)





Mesogeia Ressami  
EPA c.700-c.675



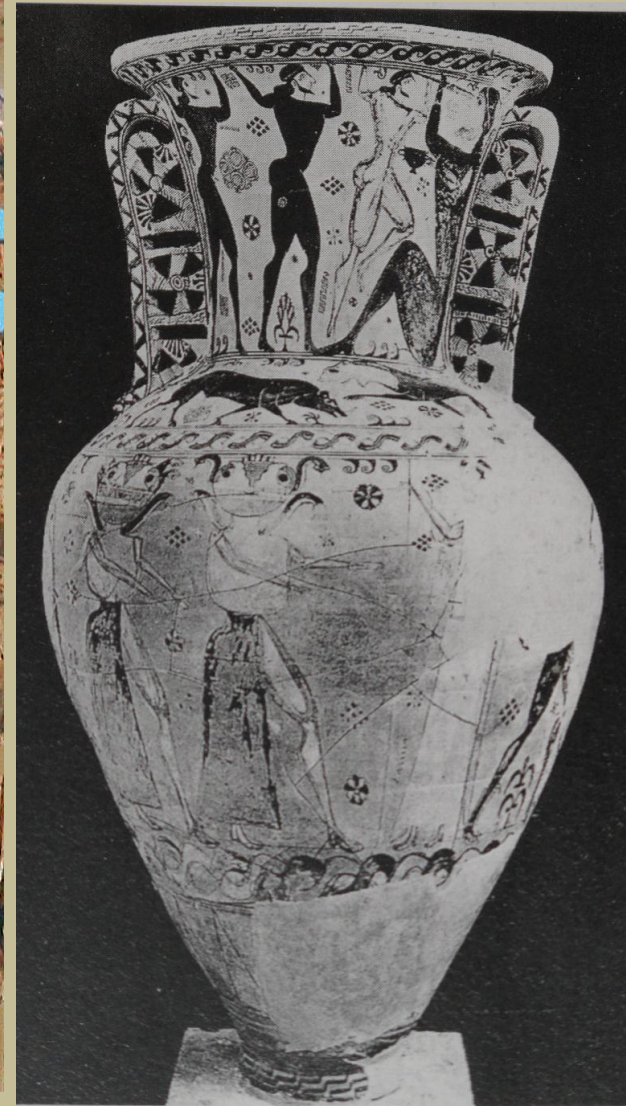
Orta Proto-Attik  
M.Ö. c.675-c.650





Ram-Jug Ressami  
OPA 675-c.650





Polyphemos Ressami, OPA MÖ. 675-650





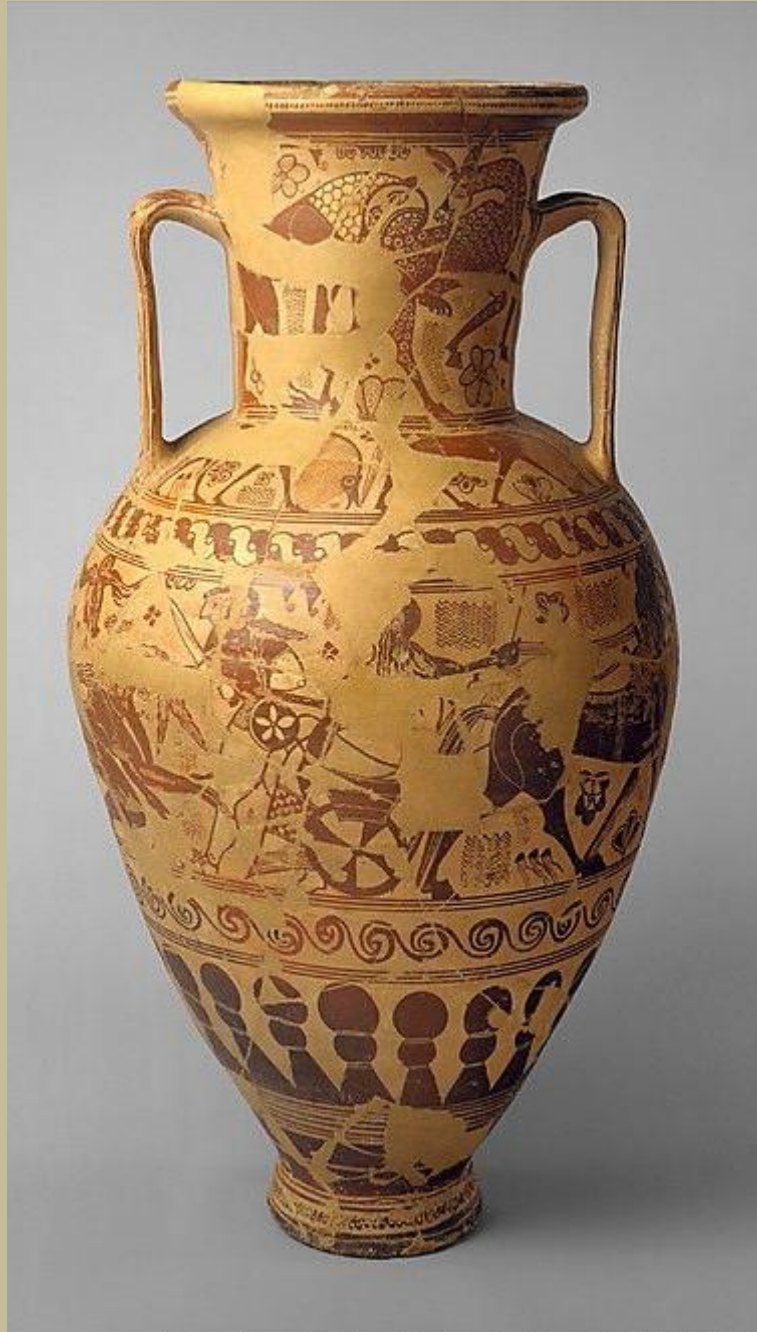
08.1

208.2



Polyphemos Ressami OPA 675-c.650





NY Nessos Ressamı OPA



210 Attic (MPA) amphora by the New York Nessos P. Heracles and Nessos. (New York 11.210.1; H. 1.08m)