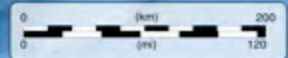


Anadolu haritası, yaklaşık M.Ö. 1880

- Kanesh Eski şehir
- Görmüzdeki şehir
- Ticaret bölgesi
- Önemli bakır kaynakları
- Bakır ticaret yolu
- Kaçak yolu
- Diğer ticaret yolları



Cartography by Ivan d'Hostingue and Gojko Barjamovic 2010

FK5/9

000000000000219

ATKÇ

© TELİF HAKKI KORUNANESER ©

“M.Ö. 3. Binyıl'da Kültepe”

ATKÇ

000000000000219

ATKÇ



Geç Uruk-Cemdet Nasır

FK5/9. 3200-2900

00000000000221

ATKÇ

Uruk IV-III

Erhanedan I

y. 2900-2750

Erhanedan II

y. 2750-2600

I. Kiş Hanedanı (En)mebaragesi(2630-2600), Agga

I. Uruk Hanedanı Enmerkar, Gilgameş

Erhanedan IIIa

y. 2600-2500

I. Ur Hanedanı (Meskalamdug), Mesanepada, Meskiagnunna, Mesalim y. 2530

Erhanedan IIIb

y. 2500-2350

II. Ur Hanedanı Nanne, Meskiagnanna

II. Uruk Hanedanı Lugal-kiginnedudu, Lugal-kisalsi, En-sakus-chana

I. Adab Hanedanı Lugal-anemundu

I. Mari Hanedanı Iisu, Bazi, Zizi

Lagaş

2570-2342

En-hegal

y. 2570

Lugal-şa-engur

y. 2550

Ur-Nanşe

2494-2465

Akurgal

2464-2455

Sümer Kralları

00000000000221

ATKÇ

En-sakus-ana

2432- 2403

E-ana-tuma

2454-2425



TELİF HAKKI KORUNAN ESER ©

Sümer Kralları		Akurgal	2464-2455
En-şakuş-ana	2432- 2403	E-ana-tuma	2454-2425
Ku-Baba		I. En-ana-tuma	2424-2405
Puzur-Sin		En-metena	2404-2375
Ur-Zababa		II. En-ana-tuma	2374-2365
>		En-entar-zi	2364-2359
>		Lugal-anda	2358-2352
>		Uru-ka-gina	2351-2342
Ur-Zababa	Lugal-zagesi (III.Uruk Hanedanı)2340-2316		
Akad Hanedanı			
	(2334-2154)		
Sargon	2334-2279		
Rimuş	2278-2270		
Maniştusu	2269-2255		
Naram-Suen (Naram-Sin	2254-2218		
Şar-kali-şarri	2217-2193		
Nanium İmi	2192-2190		
Elul-dan		Lagaş Ensi'leri	
Dudu	2189-2164	Gudea	(2230-2111) 2141-2122
Üçüncü Ur Sülalesi			
	(2112-2004)		
Ur-Nammu	2112-2095		
Şulgi	2094-2047		
Amar-Suen (Amar-Sin)	2046-2038		
(Şu-Sin)	2037-2029	000000000000222	ATKÇ
İbbi-Sin	2028-2004		

©

ATKÇ

ATKÇ

Üçüncü Ur Sülalesi		Larsa Sülalesi		E. Assur Krallığı	
(2112-2004)		(2025-1763)			
Ur-Nammu	2112-2095	Naplanum	(2025-2005)		
Şulgi	2094-2047	Emisum	(2004-1977)		
Amar-Suen (Amar Sin)	2046-2038	Samium	(1976-1942)		
(Şu-Sin)	2037-2029	Zabaya	(1941-1933)		
İbbi-Sin	2028-2004				
I. Isin Sülalesi		Larsa Sülalesi		E. Assur Krallığı	
(2017-1794)		(2025-1763)			
İşbi-Erra	2017-1985	Naplanum	(2025-2005)		
Şu-ilîşu	1984-1975	Emisum	(2004-1977)		
İddin-Dagan	1974-1054	Samium	(1976-1942)	Ilişuma	y. 1980
İşme-Dagan	1953-1935	Zabaya	(1941-1933)	Erişum I	y. 1941-1902
Lipit-Eştar	1934-1924	Gungunum	1932-1906	E. Babil Sülalesi	
Ur-Ninurta	1923-1896	Abisare	1905-1895	(1894-1595)	
Bur-Sin	1895-1874	Sumu-El	1894-1866	Sumu-abum	1894-1881
Lipit-Enlil	1873-1869	Nur-Adad	1865-1850	Sumulael	1880-1845
Ena-imitti	1868-1861				
Enlil-bani	1860-1837	Sin-iddinam	1849-1848		
		Sin-eriban	1842-1841	Sabium	1844-1831
Zambya	1836-1834	Sin-ikişam	1840-1836		
İter-pişa	1833-1831	Silli-Adad	1835	Apil-Sin	1830-1813
Urdukuğa	1830-1828	Varad-Sin	1834-1823		
Sin-magir	1827-1817			Sin-muballit	1812-1793
Damik-ilîşu	1816-1794	Kim-Sin	1822-1763	Hammurabi	1792-1750
Larsa fethetti		Babil fethetti		Samsu-iluna	1749-1712
				Abi-eşuh	1711-1684

(2017-1794)		(2025-1763)					
İşbi-Erişu	1815-1829	Naplanum	(2025-2005)	00000000000224		E. Assur Krallığı	ATKÇ
Şu-ilişu	1984-1975	Emisum	(2004-1977)				
İddin-Dagan	1974-1054	Samium	(1976-1942)			İşurta	y. 1980
İşme-Dagan	1953-1935	Zabaya	(1941-1933)			Erişum I	y. 1941-1902
Lipit-Eştar	1934-1924	Gungunum	1932-1906		E.Babil Sülalesi		
Ur-Ninurta	1923-1896	Abisare	1905-1895	(1894-1595)		Ikunum I	1900-1879
Bur-Sin	1895-1874	Sumu-El	1894-1866	Sumu-abum	1894-1881		
Lipit-Enlil	1873-1869	Nur-Adad	1865-1850	Sumulael	1880- 1845	Sargon I	y. 1871-1849
Ena-imitti	1868-1861						
Enlil-bani	1860-1837	Sin-iddinam	1849-1843				
		Sin-eribam	1842-1841	Sabium	1841-1831	Puzur-Aşşur II	y. 1848-1824
Zambiya	1836-1834	Sin-ikişam	1840-1836				
İter-pişa	1833-1831	Silli-Adad	1835	Apil-Sin	1830-1813	Naramsin	y. 1823-1820
Urdukuga	1830-1828	Varad-Sin	1834-1823			Erişum II	y. 1819-1814
Sin-magir	1827-1817			Sin-muballit	1812-1793	I. Şamşi-Adad	1813-1781
Damik-ilişu	1816-1794	Rim-Sin	1822-1763	Hammurabi	1792-1750	I. İşme-Dagan	1780-1740
Larsa fethetti		Babil fethetti		Samsu-iluna	1749-1712	Hammurabi fethetti	
				Abi-eşuh	1711-1684		
				Ammi-ditana	1683-1647		
				Ammi-saduka	1646-1626		
				Samsu-ditana	1625-1595		
				Murşili I Babil'i fethetti			
				Gulkişar!			
				Kassit Sülalesi		Orta Assur	
				Gandaş	y. 1730		
				II. Agum (kakrime)	y. 1570		
				I. Burna-Buriş	y. 1510	III. Puzur-Asur	y. 1520

FK5/9

000000000000225

ATKÇ

© TELİF HAKKI KORUNANESER ©

“M.Ö. 3. Binyıl'da Kültepe”

ATKÇ

000000000000225

ATKÇ

000000000000226

TARİH KURUMU
KÜLTEPE KURUMU
1945
KANIS HAYRUM
KARAHAYRUK KÖYÜ
DİĞİ



000000000000226

BADİŞARETLER:
TARİP SAHALARI
YOLLAR
SU KANALLARI
KÖVLELERİ
KAZI YERLERİ
ÇİZEN: M. AKKOC 7-4-1945



©TELEF HAKKI KORUNAN ESER©



©TELEF HAKKI KORUNAN ESER©

FK5/9

000000000000229

ATKÇ



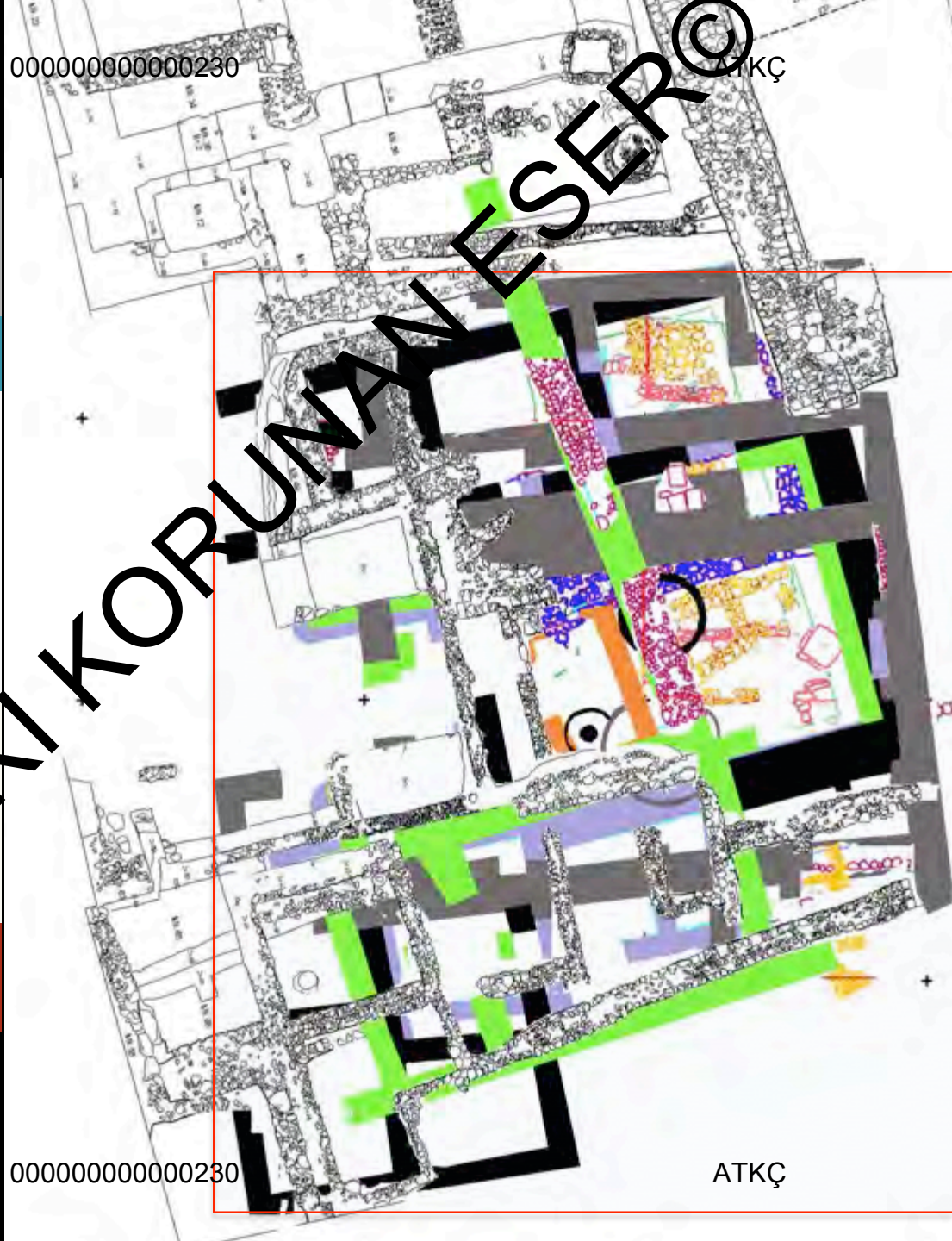
Kuzey Anma, 2017

ATKÇ

000000000000229

ATKÇ

Kanesh	<i>karum</i>	
18		EBA 1
17		EBA 2
16		EBA 2
15		EBA 2
14		EBA 2
13		EBA 3
12		EBA 3
11a-b		EBA 3
10	IV	
9	III	



FK5/9

000000000000231

ATKÇ

ATKÇ

000000000000231

ATKÇ

© TELİF HAKKI KORUNAN ESER ©



FK5/9

000000000000232

ATKÇ

36

37

38

39

ATKÇ

000000000000232

ATKÇ

© TELİF HAKKI KORUNAN ESER ©



FK5/9

000000000000233

ATKÇ

36

37

38

39



© TELİF HAKKI KORUNAMASER ©

000000000000233

ATKÇ

FK5/9

000000000000234

ATKÇ

36

37

36

39

ATKÇ

000000000000000

16

ATKÇ15

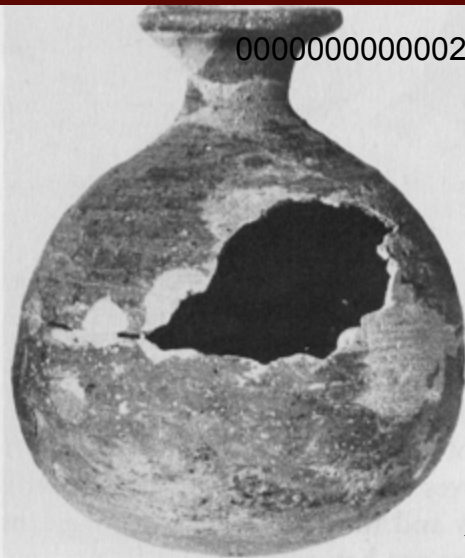
14

©TELİF HAKKI KORUNAN ESER©





FK5/9



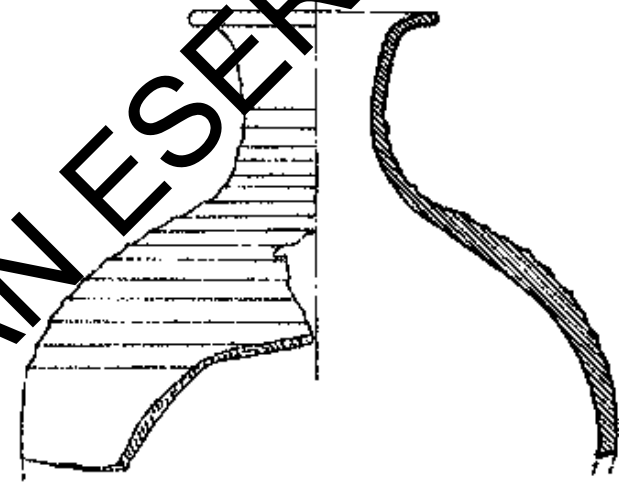
000000000000235

Kühne's F2

Fig. 3-10. Kültepe, Level 15 cist grave, flask

Fig. 3-11. Kültepe, Level 15 cist grave, flask

Ill. 3-8. Kültepe, Level 15, flask sherd

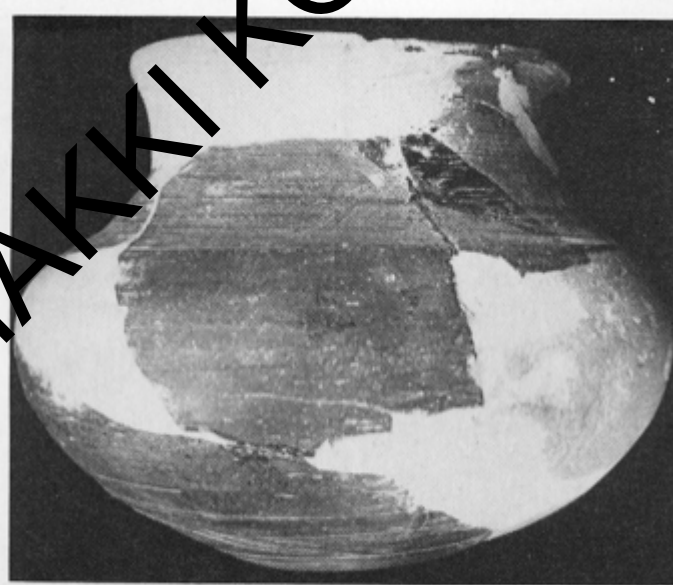


ATKÇ



ATKÇ

Fig. 3-15. Kültepe, Level 15, flask



000000000000235

Fig. 3-16. Kültepe, Level 15, flask



ATKÇ

Fig. 3-12. Kültepe, Level 15, flask sherd

yük: 14 cm.
gen: 15 "

FK5/9

Biçim: masıpa:

Diş ve ağız kenarı içi kumura astır.
İki parçalı. Diş kenarına renginde.
Kısa lağuntla. Diş kenarında dişi. Göğ-
sünde iki yassı dişmesi var.



B.Ş. [Tos sanduka meş. No. 7]

Kt.K/T 125

yük: 5.5 cm.
gen: 10.5 "

000000000000236

Pincan:

İki diş kenarı astır, parçalı.
Ağız yer iki. Diş dişi: Bait ağı kenarı.
İki delikli tek kulcu var.



yük: 7 cm.
gen: 9 "

ATKÇ

Masıpa:

Siyah astır, iki diş. Siyah
kulcu. Göğsünde iki diş. İki dişli.
Yumuk lağuntla. İki dişli. İki dişli.
Ağız yer iki.



B.Ş. [Tos sanduka meş. No. 7]

yük: 5.5 cm.
gen: 4.3 "

Kt.K/T 186

Tortu:

Yavaşlık ağız. Delikli kumura. İki diş-
sel lağuntla. Boyuna iştirak. Ön-
sünde yavaş iki kulcu. Büyük kul-
cu beyzi mektale. Nevliğ kenarında iki-
miş.



1952

B.Ş. [Tos sanduka meş. No. 7]

Kesir çopu: 5.9
Boyuna ay: 2.7
Kulcu deli: 1.1

Kt.K/T 201

Mesmer idol:

Bel ve iki kulcuyla kumura
yapılan kumura vana. İnce
ağız kenarı. İki dişli, çok
dış meş.



B.Ş. [Tos sanduka meş. No. 7]

y. 7.5
g. 6.2

Kt.K/T 185

Vogo:

Devrişü astır. İnce lağuntla.
Yavaşlık ağız kenarı dışarı
yaşım. Yumukla peşdeli. Dış kenar
de dış kenarı çelik işleri dışarı
belli. [Suriye iştirak]



ATKÇ

000000000000236

Vogo:

Devrişü astır. İnce silindirik lağ-
untla. Yavaşlık ağız kenarı dışarı
yaşım. Yumukla peşdeli.
Çelik işleri [Suriye iştirak]



Kt.K/yük 16 cm
gen 15.5 "

Kt.K/T 22

Vogo:

Araç hisar idi: İnce silindirik lağuntla.
Yavaşlık peşdeli. Dış kenar ağız kenarı
kenarı. İki dişli. İki dişli. İki dişli.
İki dişli. İki dişli. İki dişli.



ATKÇ

B.Ş. [Tos sanduka meş. No. 7]

B.Ş. [Tos sanduka meş. No. 7]

1953

yük: 14 cm.
gen: 15 "

FK5/9

Biçim: masapa:
Dış ve iç yüzü aynı renkte, sarımsı.
İç yüzünde. Dış yüzünde sarımsı.
Kısa boyunlu. Dış yüzünde dipte. Göğ-
sünde bir yassı dipmesi var.



B.Ş. [Tos sanduka meş. No. 7]

KT.K/T 125
yük: 5.5 cm.
gen: 10.5 "

000000000000237

Püncan:
İki dış yüzüne sarımsı, sarımsı.
İç yüzü içi. Dış dipte. Başta açık kenar.
İç yüzünde tek kulçuk var.



KT.K/180
yük: 7 cm.
gen: 9 "

ATKÇ

Maşapa:
Siyah dış yüzüne sarımsı.
İç yüzünde. Dış yüzünde sarımsı.
Kısa boyunlu. Dış yüzünde dipte. Göğ-
sünde bir yassı dipmesi var.



B.Ş. [Tos sanduka meş. No. 7]

yük: 5.5 cm.
gen: 4.8 "

KT.K/T 186

Tortu:
Yuvatalak ağızlı. Sarımsı kahverengi. İç yüz-
ünde koyu sarı. Boyuna üstünde dipte, omur-
sunda yeşil iki kulçuk. Büyük kul-
çukun başı miktale. Neantliğin kenar dipte sarı-
msı.



1952

B.Ş. [Tos sanduka meş. No. 7]

Keski çöpü: 5.9
Boyuna: 2.7
Kulçuk: 1.1

KT.K/T 201

Mesmer idol:
Bel ve omuzlukları ile kemane
yapılanan kemane vana. İnce
boyunlu. Dış yüzünde, iç
yüzünde sarımsı.



B.Ş. [Tos sanduka meş. No. 7]

y. 7.5
g. 6.2

KT.K/T 185
yük: 8 cm.
gen: 10.5 "

Vogo:
Dış yüzüne sarımsı. İnce boyunlu.
Yuvatalak ağızlı kemane desen
var. Üstüne. Üstüne. Üstüne. Üstüne.
de dış yüzüne çalkı işleri desenleri
belli. [Suriye iktali]



ATKÇ

B.Ş. [Tos sanduka meş. No. 7]

Vogo:
Dış yüzüne sarımsı. İnce boyunlu. Co-
yunlu. Yuvatalak ağızlı kemane de-
seni var. Üstüne. Üstüne. Üstüne.
Çalkı işi [Suriye iktali]



000000000000237

B.Ş. [Tos sanduka meş. No. 7]

KT.K/185
yük: 16 cm.
gen: 15.5 "

KT.K/T 22

Vogo:
Arah hiromidi: İnce silindirik boyunlu.
Yuvatalak ağızlı. Dış yüzüne sarımsı.
Kısa boyunlu. Dış yüzünde dipte. Göğ-
sünde bir yassı dipmesi var.



ATKÇ

1953

FK5/9

000000000000238

ATKÇ

36

37

36

39

ATKÇ

000000000000238

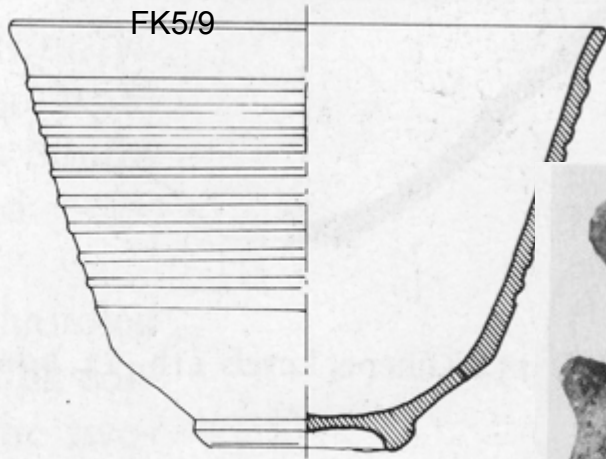
ATKÇ

©TELİF HAKKI KORUMAN ESER©

16

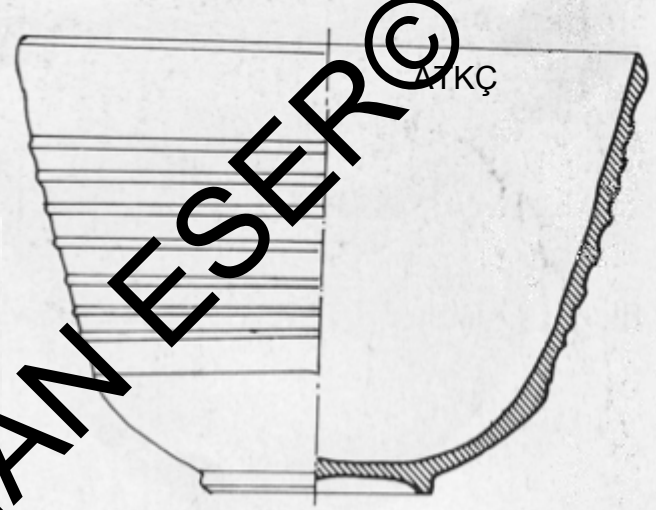
ATKÇ15

14



Ill. 3-12. Kültepe, Level 14, beaker

000000000000239



Ill. 3-13. Kültepe, Level 14, beaker



Fig. 3-21. Kültepe, Level 14, beak-spouted pitcher

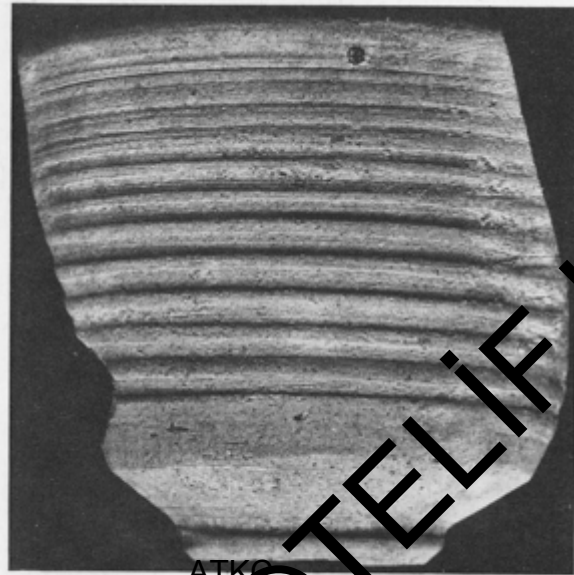


Fig. 3-19. Kültepe, Level 14, beaker

000000000000239

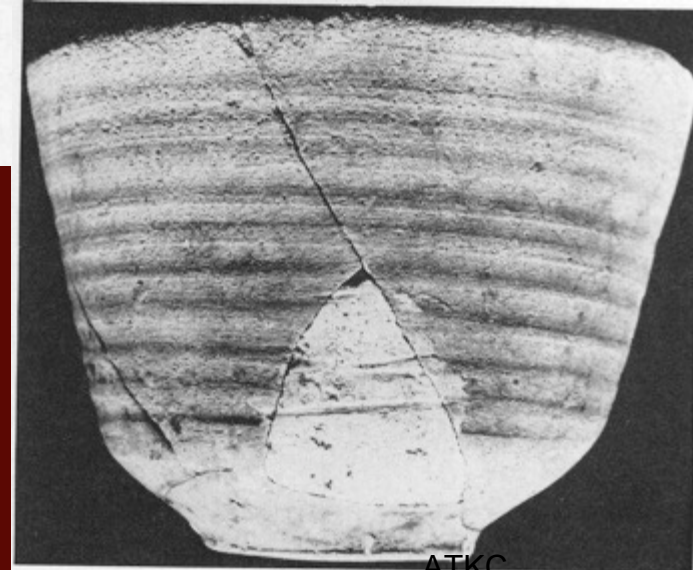
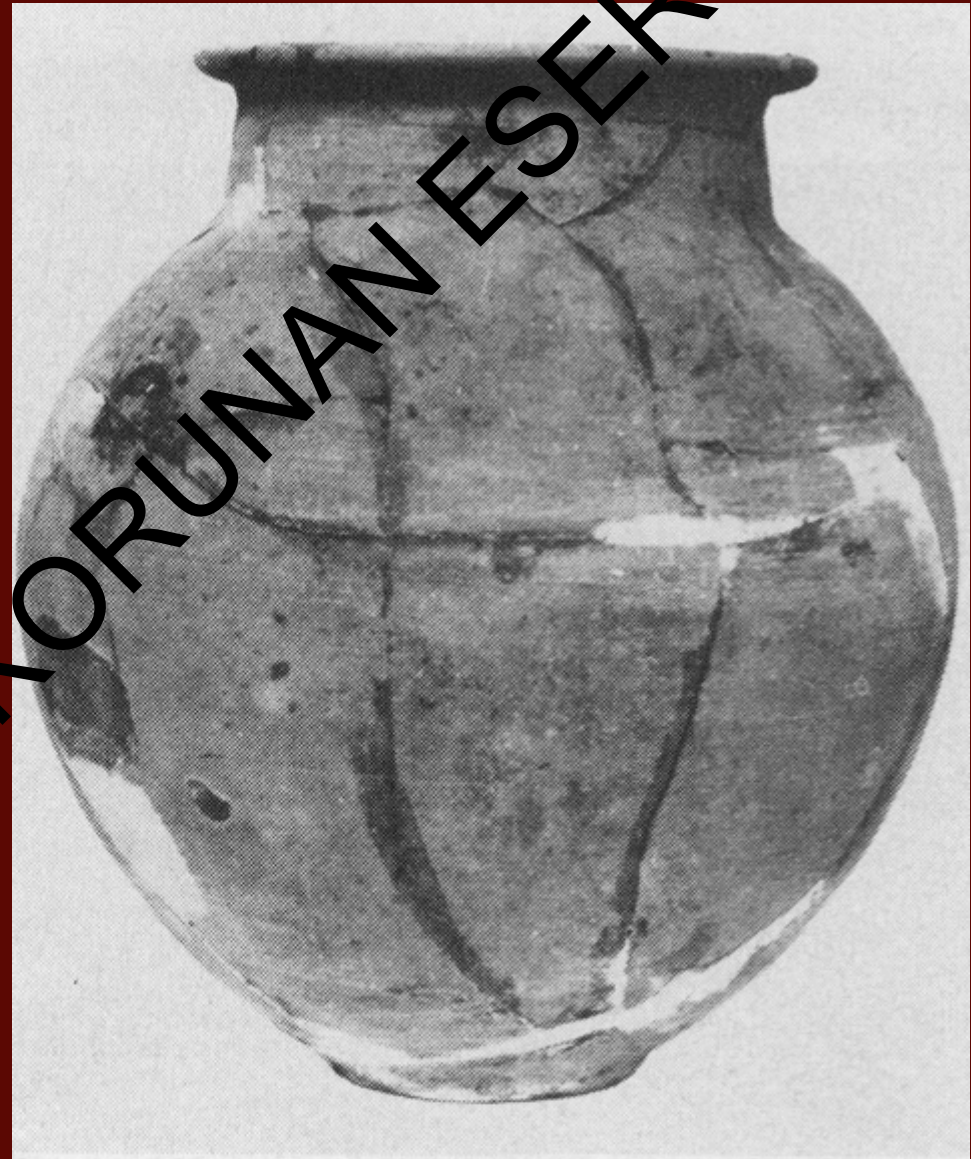
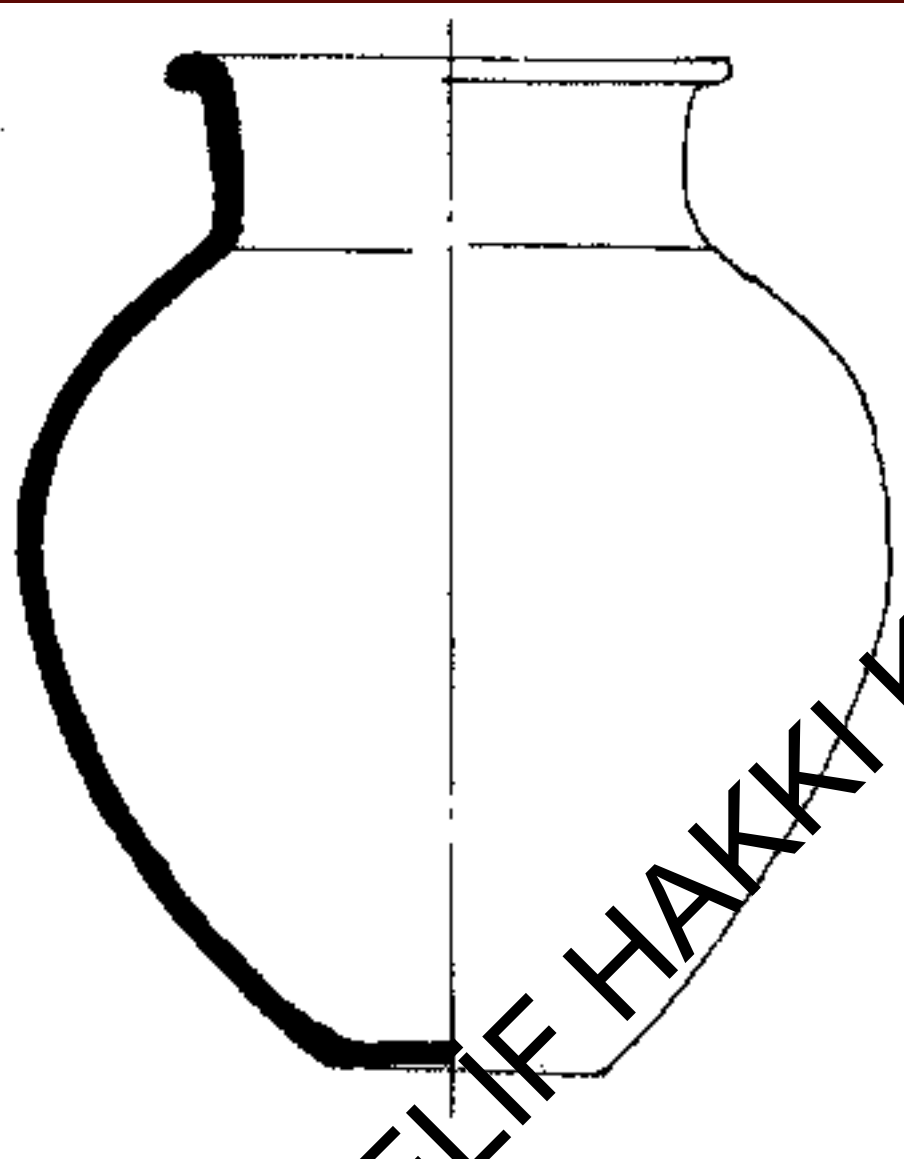


Fig. 3-20. Kültepe, Level 14, beaker

© TELİF HAKKI KORUNAN ESER ©



III. 3-9. Kültepe, Level 14, flask

Fig. 3-14. Kültepe, Level 14, flask



FK5/9

000000000000241

ATKÇ

36

37

36

39

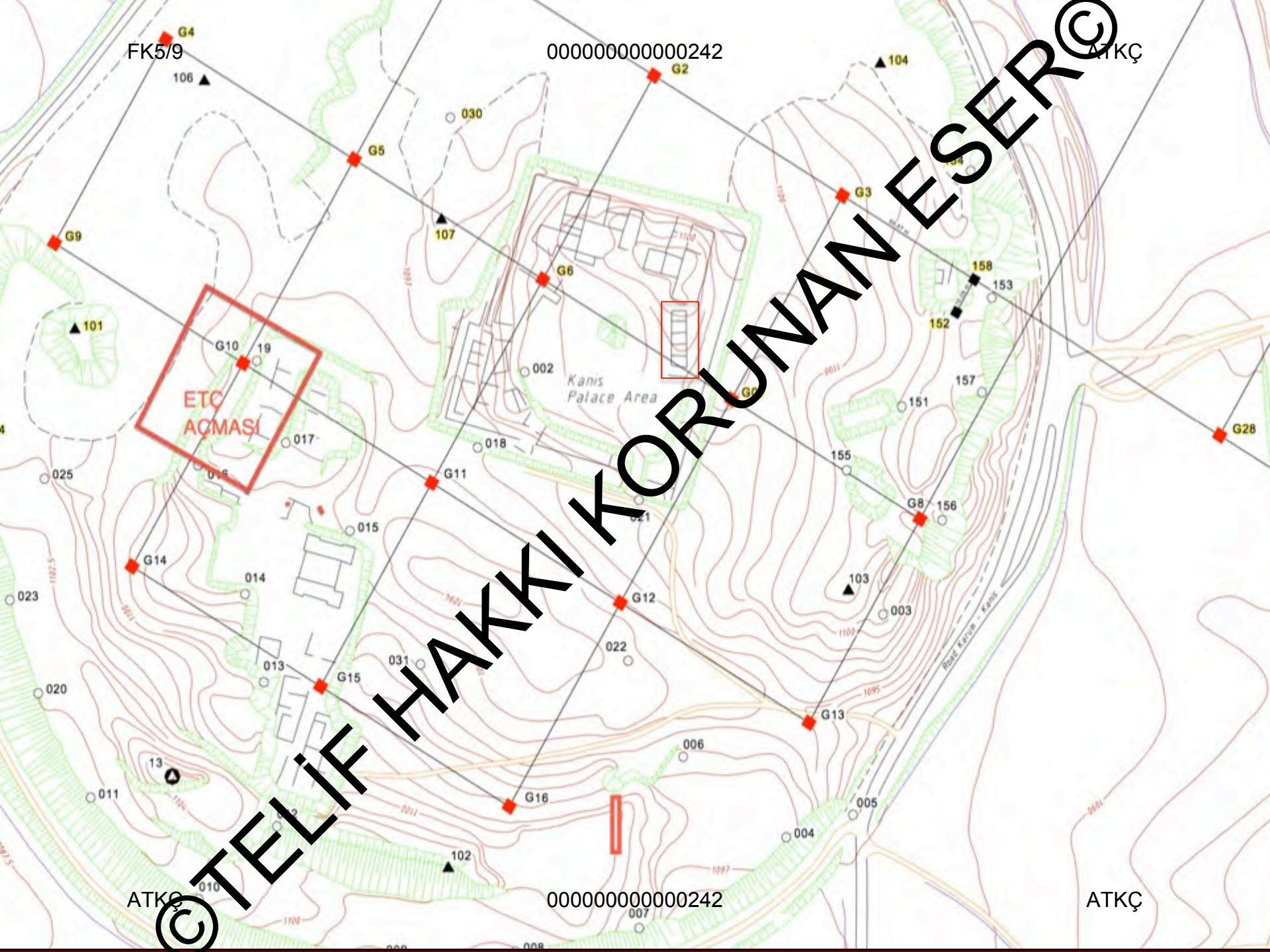
ATKÇ

000000000000000

16
ATKÇ15
14

©TELİF HAKKI KORUMAN ESERİ©





FK5/9

000000000000242

ATKÇ

ATKÇ

000000000000242

ATKÇ

ETC AÇMASI

© TELFER HAKKI KORUNAN ESER ©

Kanıs Palace Area

Road Karpuz - Kanıs

FK5/9^{XXIV}

000000000000243

LXXXV

LXXXVI

LXXXVII

LXXXVIII

LXXXIX

XC

XCI

XCII

XCIII

XCIV

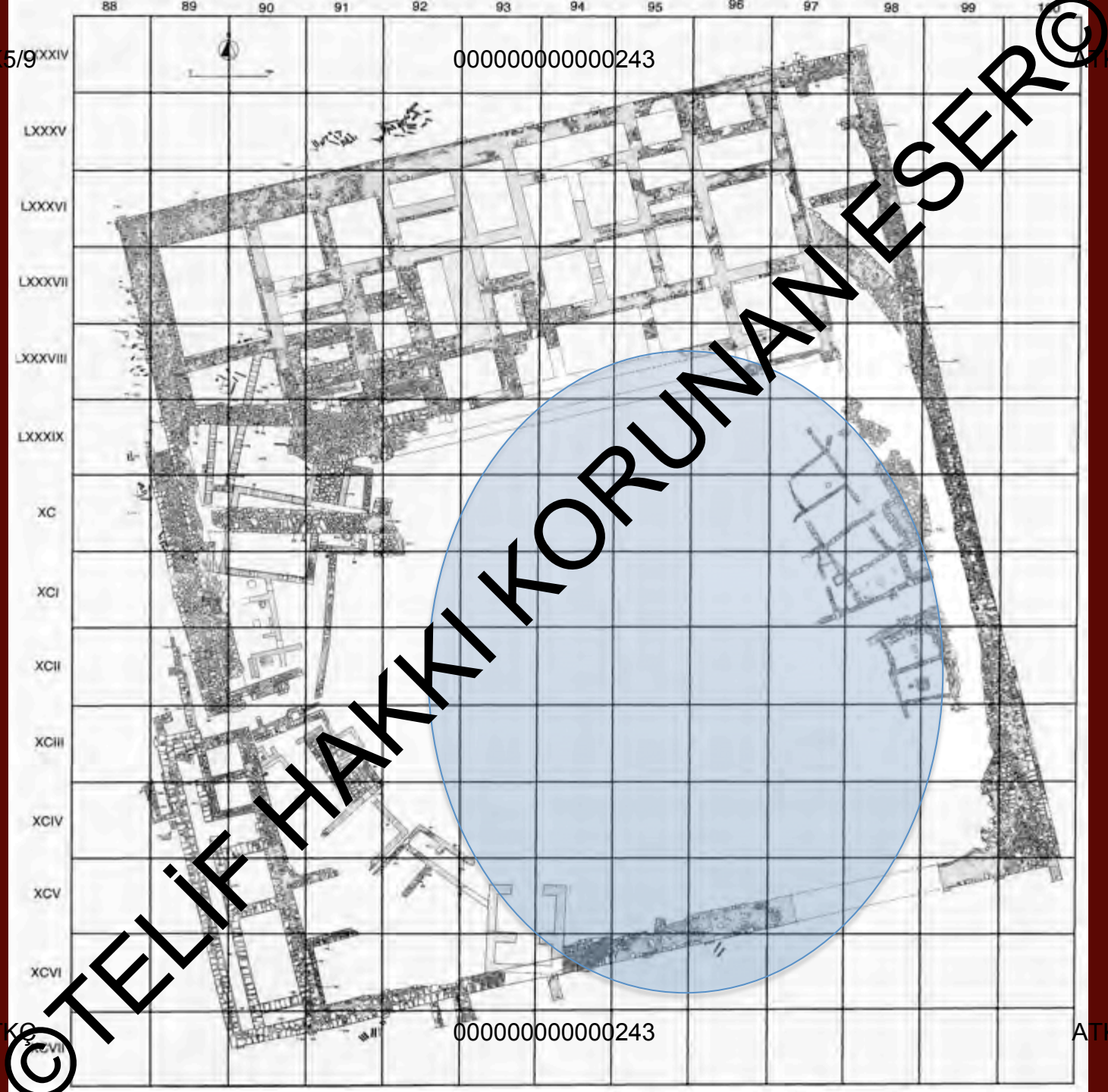
XCV

XCVI

© ATKÇ

000000000000243

ATKÇ



FK5/9

000000000000244

ATKÇ



ATKÇ

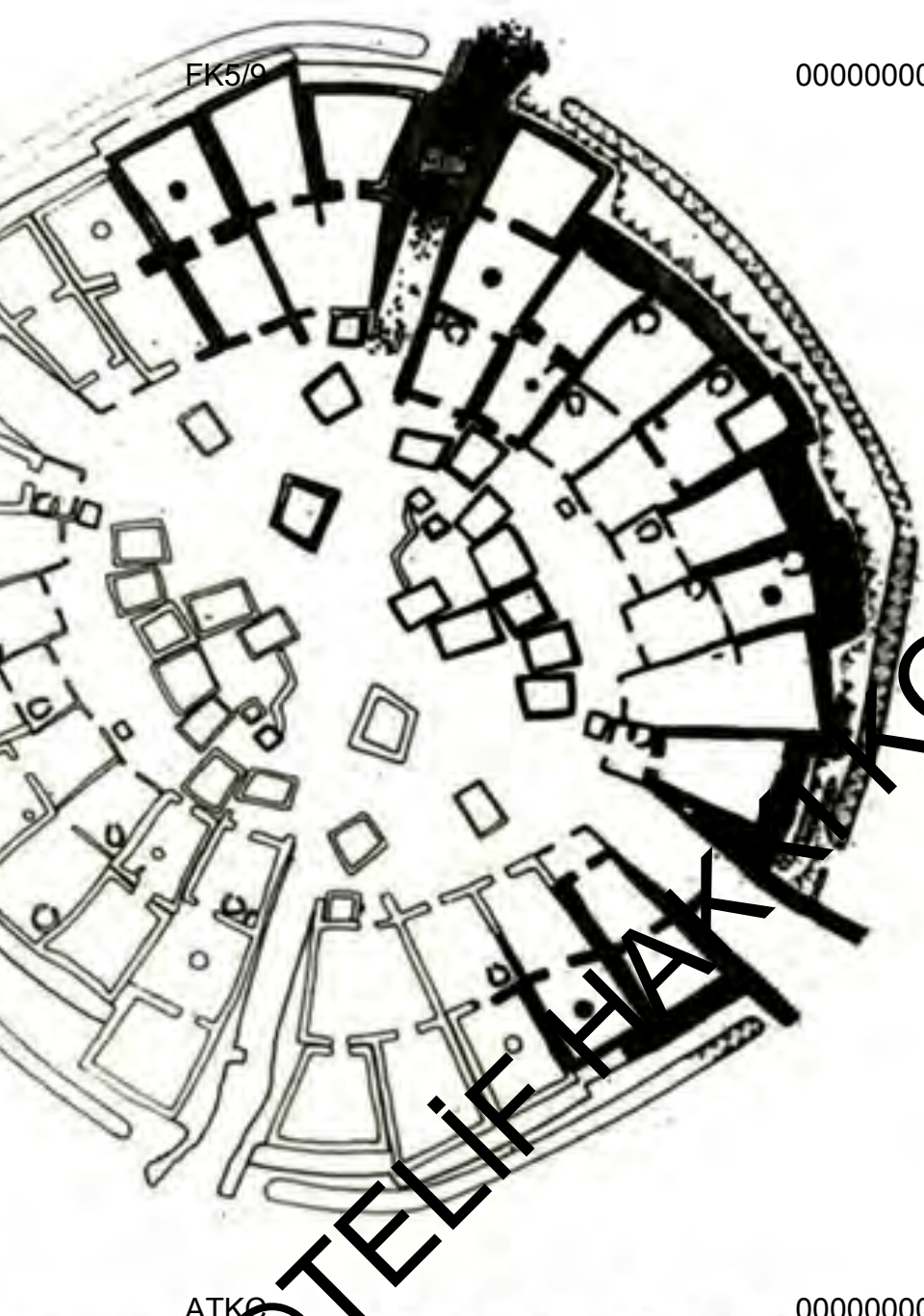
000000000000244



ATKÇ

EK5/9

000000000000245



ATKÇ

ATKÇ

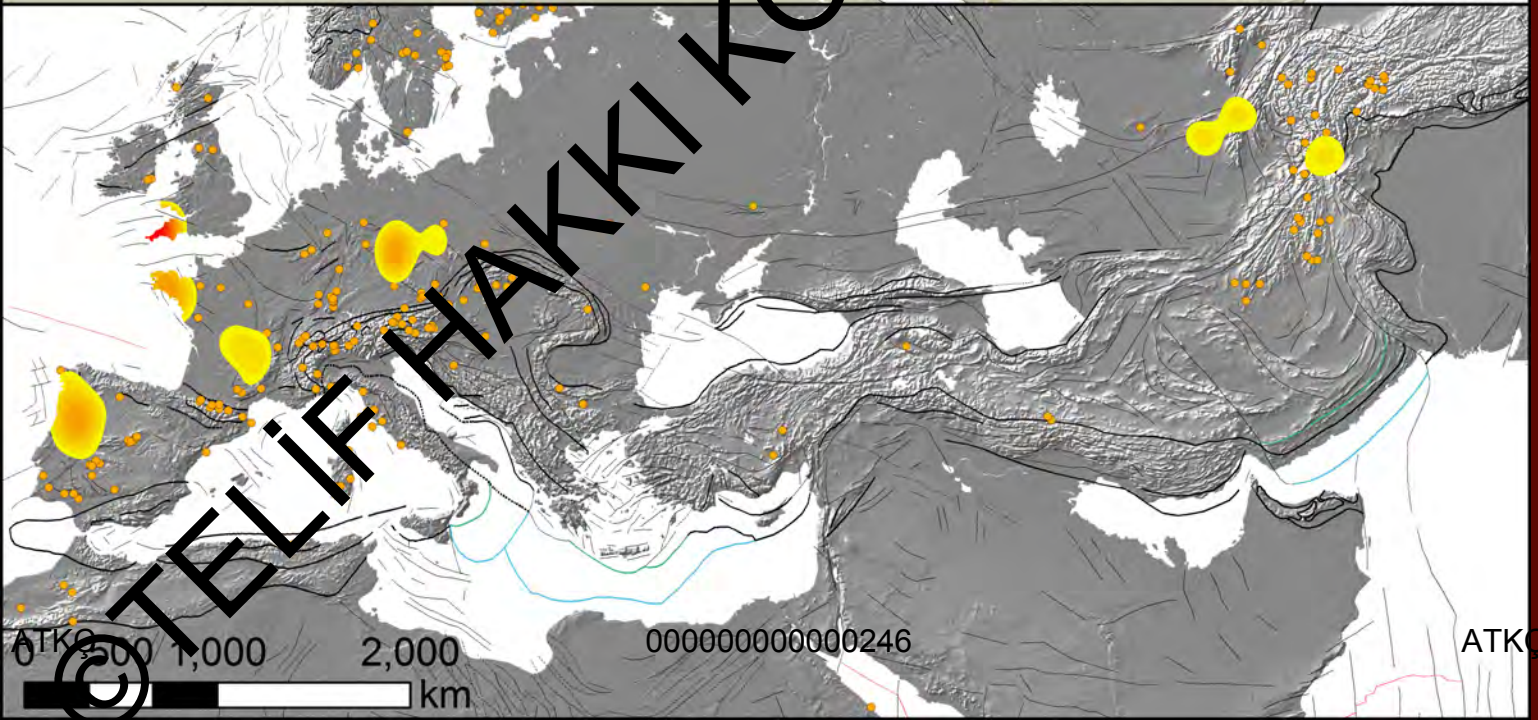
000000000000245

ATKÇ

Demircihyük (İTC I ve İTC II)



TELİF HAKI KİTAPÇIĞI TORUNAN ESERİ ©



TELEF HAKKI KORUNAN ESER ©

FK5/9 M

000000000000247

ATKÇ^R

36

37

38

39

ATKÇ

0000000000002

ATKÇ

©TELİF HAKKI KORUNAN ESER©



FK5/9

000000000000248

ATKÇ

10 m

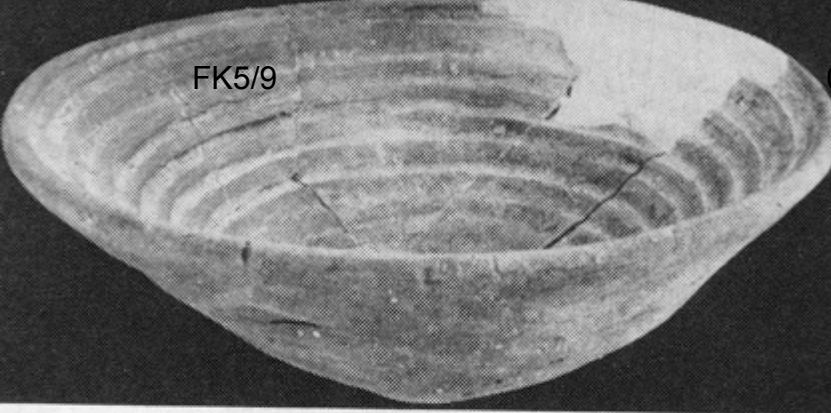


© TELİF HAKKI KORUNAN ESER ©

ATKÇ

000000000000248

ATKÇ



FK5/9

Fig. 3-24. Kültepe, Level 13, bowl

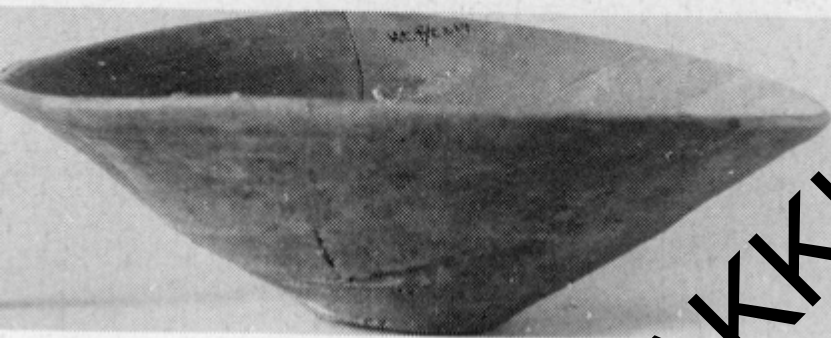


Fig. 3-25. Kültepe, Levels 11b-12, bowl

000000000000249

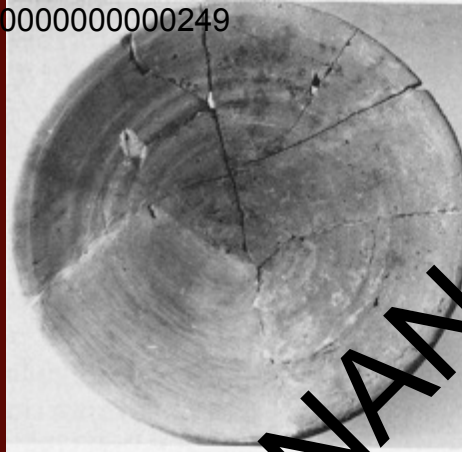


Fig. 3-22. Kültepe, Levels 11b-12, bowl

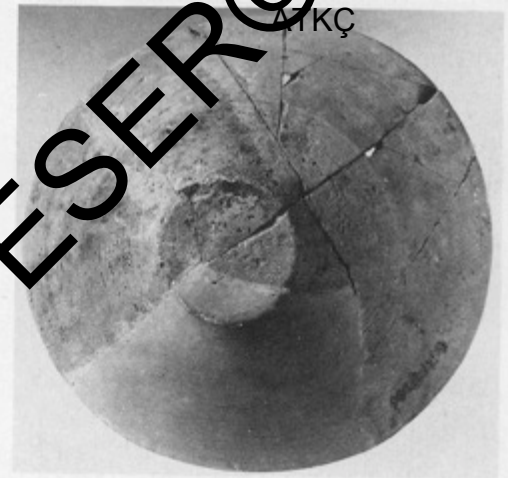


Fig. 3-23. Kültepe, Levels 11b-12, bowl



Ill. 3-14. Kültepe, Levels 11b-12, bowl



Ill. 3-15. Kültepe, Levels 11b-12, bowl

In Levels 11b and 12 at Kültepe there occur, together with monochrome and polychrome local wares, ceramic bowls³⁸ whose exact equivalents we find in Troy II b-c, d, f, g, and in Level III a-d,³⁹ as well as in Tarsus EB III.⁴⁰ All are wheelmade and thick-walled. Most have a plain, unslipped surface, although some are coated with a pale, reddish, or light brown wash. They exhibit great variety in size (figs. 3-22 to 3-24; ills. 3-14 and 3-15). A small number of these vessels occur at Kültepe for the first time in Level 13 (fig. 3-25), and were found in EB II levels. All of them must have been imported from western Anatolia (Troy).

ATKÇ

000000000000249

ATKÇ

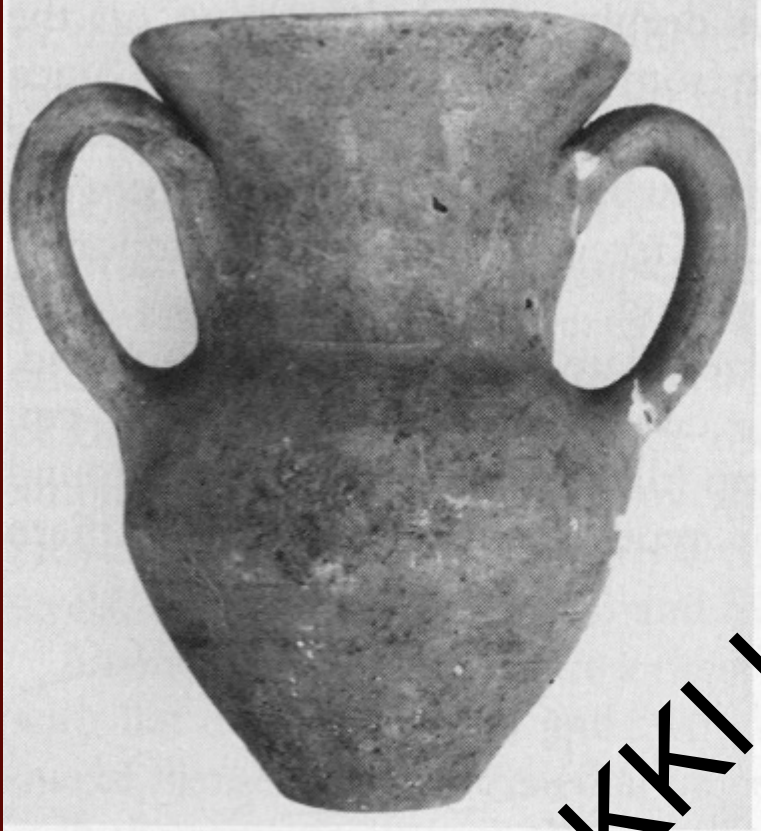


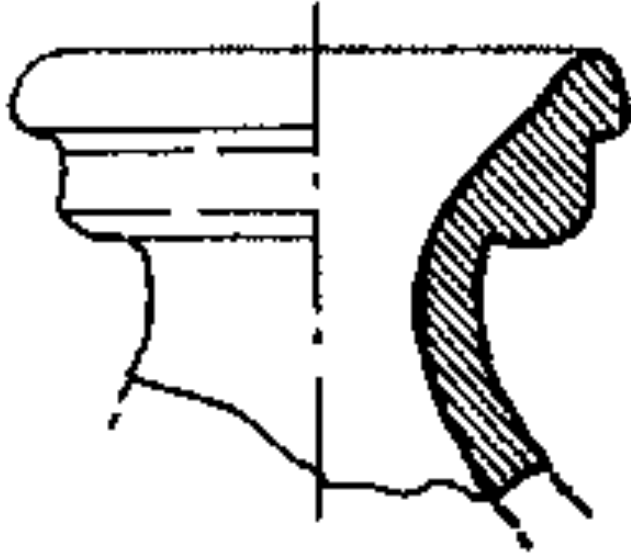
Fig. 3-31. Kültepe, Level 12, two-handled tankard



Fig. 3-32. Kültepe, Level 13, tankard



Fig. 3-33. Kültepe, Level 13, tankard



Ill. 3-4. Kültepe, Level 13, neck sherd from flask



Ill. 3-5. Kültepe, Level 13, neck sherd from flask

FK5/9

000000000000252

ATKÇ

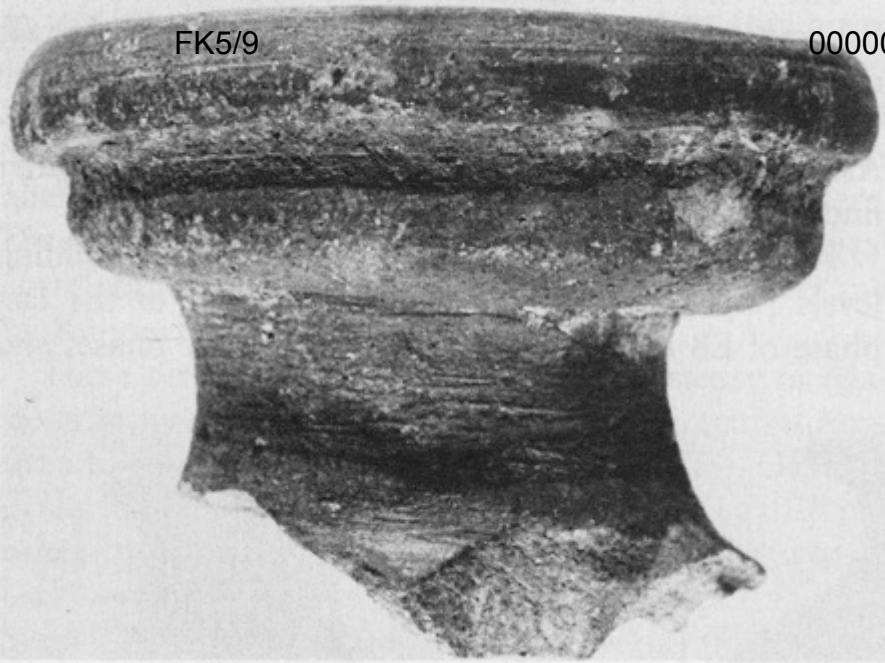
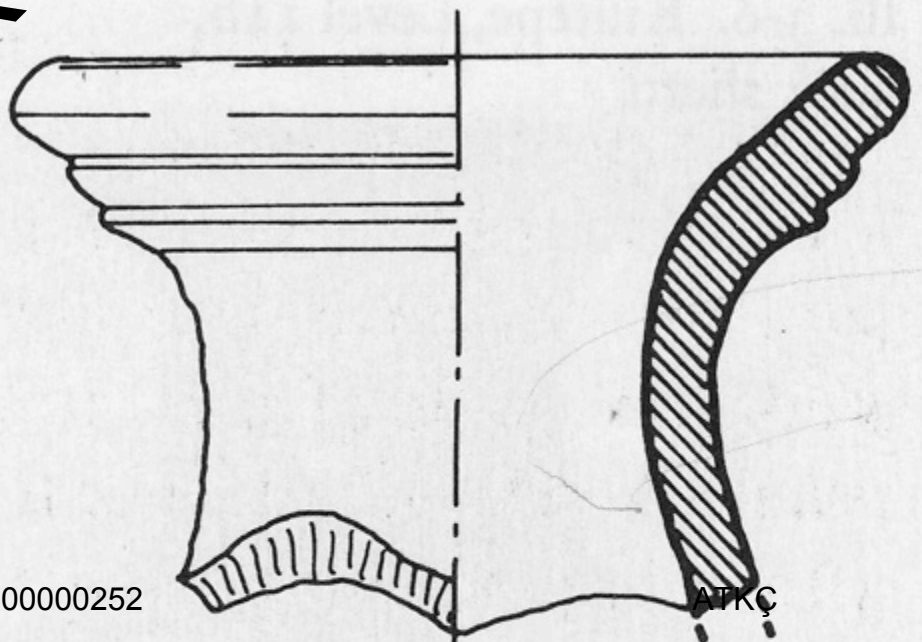
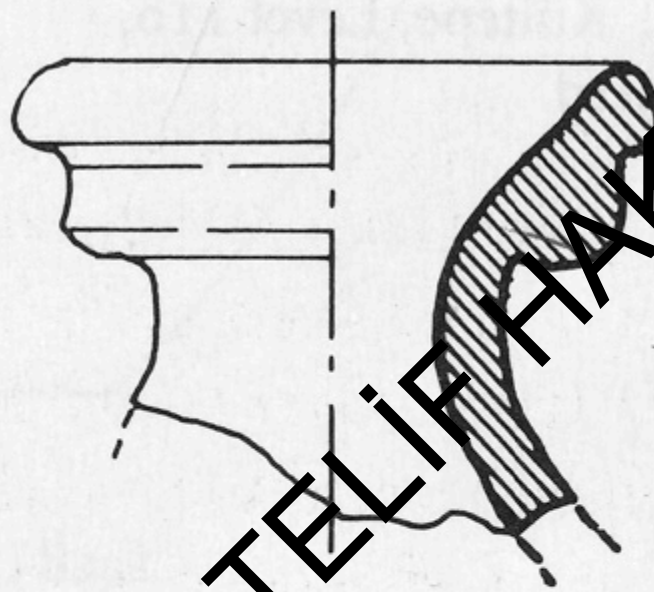


Fig. 3-7. Kültepe, Level 11b, neck sherd 13



ATKÇ

000000000000252

ATKÇ

© TELİF HAKKI KORUNAN ESER ©

36

37

38

39



FK5/9

0000000000000254

ATKÇ

36

37

38

39

©TELİF HAKKI KORUMAN ESER©

ATKÇ

0000000000000254

ATKÇ

FK5/9

000000000000255

ATKÇ

© TELİF HAKKI KORUNAN ESER ©

ATKÇ

000000000000255

ATKÇ



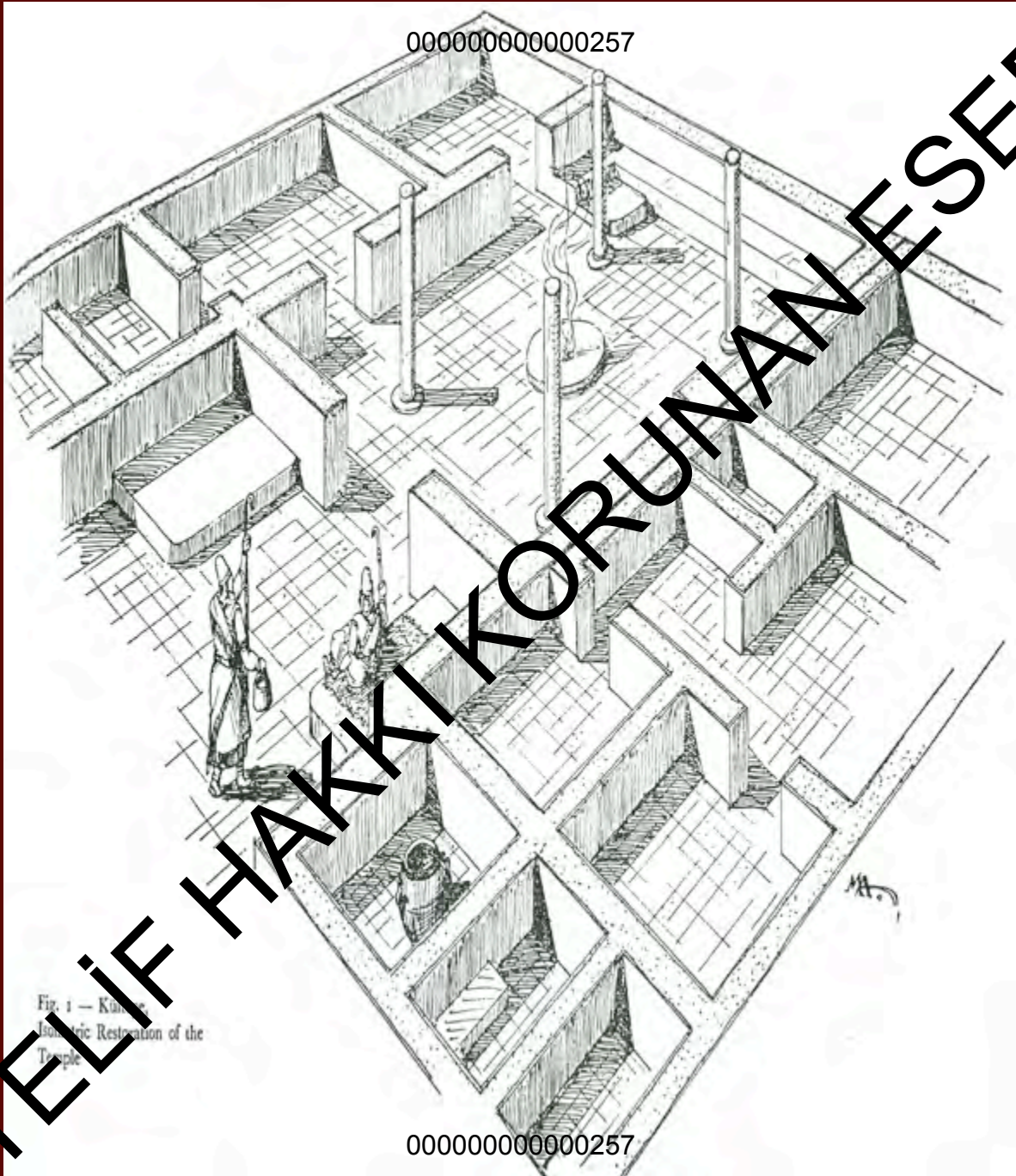


Fig. 1 — Kütahya
Isometric Restoration of the
Temple

© TELİF HAKKI KORUNAN ESER ©
ATKÇ

FK5/9

000000000000258

ATKÇ

© TELİF HAKKI KORUNAN ESER ©

ATKÇ

000000000000258

ATKÇ

FK5/9

000000000000259

ATKÇ

© TELİF HAKKI KORUNAN ESER ©

ATKÇ

000000000000259

ATKÇ



© TELİF HAKKI KORUNAN ESER ©

000000000000261



TELIF HAKKI KORUNAN ES

000000000000261

FK5/9

000000000000262

ATKÇ



ATKÇ

000000000000262

ATKÇ

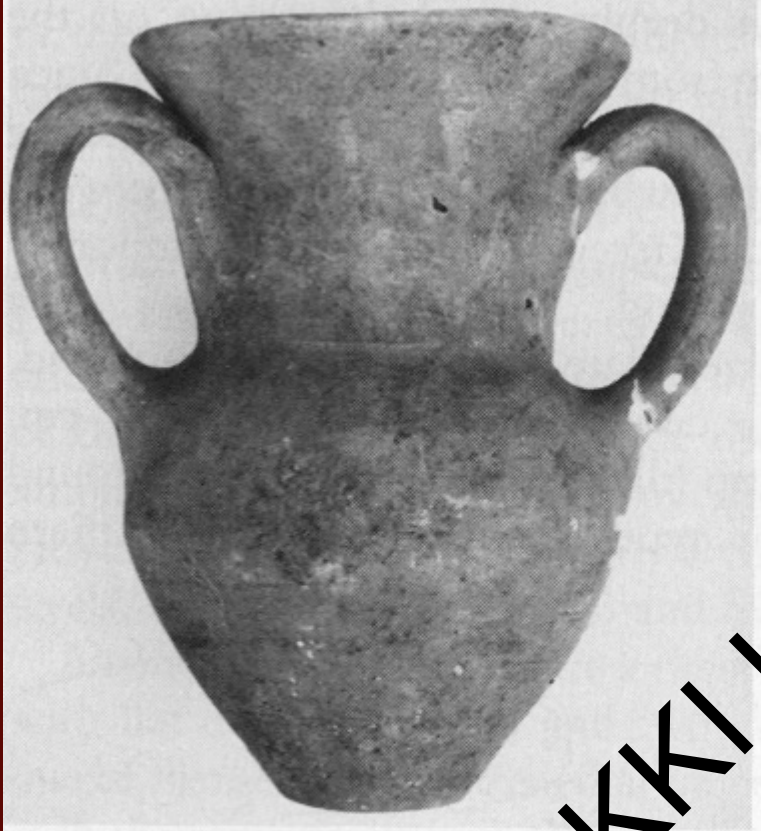


Fig. 3-31. Kültepe, Level 12, two-handled tankard



Fig. 3-32. Kültepe, Level 13, tankard



Fig. 3-33. Kültepe, Level 13, tankard

© TELİF HAKKI KORUNAN ESER ©

Tarihler	Dönemler	Acemhöyük	Karahöyük	Kültepe	Alişar	Alacahöyük	Boğazköy	Küllüoba	Karataş	Beycesultan	Troya	Taruis	Amuk	Mezopotamya
M.Ö														
2000		V	IV	9 Karum III	5M12T		Kuzeybatı Yamacı 9			VIA	V			
2100		VI		10 Karum IV		5				VIB				
2200	ETÇ IIIIB	VII		11A	6M					VII				Post-Akad III. Ur
		VIII		11B							IV			
2300	ETÇ IIIA	IX	VI	12		6				XII	III			Akad Dönemi
		X	VII								IIg			
2400	ETÇ II	XI	VIII	13	7M	7				Boşluk				Akad Dönemi
		XII		14	8M						IIb			
2500											IIa			Erhanedanlar IIIb
2600														

Table 1

FK5/9

000000000000265

ATKQ



ATKQ

000000000000265

ATKQ

FK5/9

000000000000266

ATKÇ

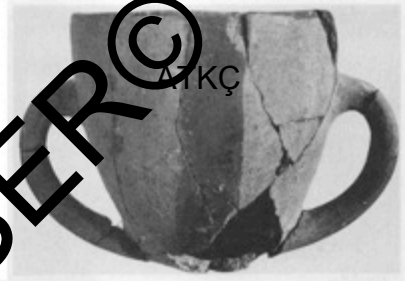
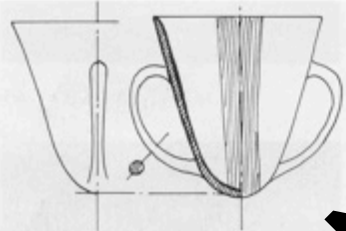
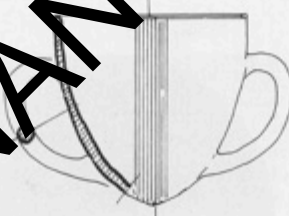


Fig. 3-26. Kültepe, Level 12, two-handled cup



Ill. 3-16. Kültepe, Level 12, two-handled cup



Ill. 3-17. Kültepe, Level 12, two-handled cup



ATKÇ



000000000000266

ATKÇ

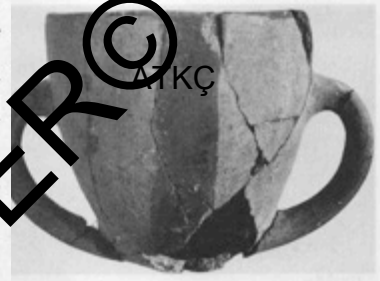


© TELİF HAKKI KORUNAN ESER ©

FK5/9

000000000000267

Those from Level 12 have a light brown slip and are decorated with dark red bands extending from rim to rim around the base, crossing at the bottom another band which covers each handle (fig. 3-26; ills. 3-16 and 3-17). Similar vessels are known from previous excavations at Kültepe⁴⁵ and Alishar.⁴⁶ All were manufactured in central Anatolian workshops.

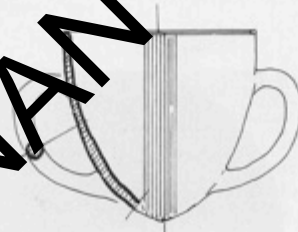


ATKÇ

Fig. 3-26. Kültepe, Level 12, two-handled cup



Ill. 3-16. Kültepe, Level 12, two-handled cup



Ill. 3-17. Kültepe, Level 12, two-handled cup



Ill. 3-18. Kültepe, Levels 11b-12, two-handled goblet

The third group of two-handled goblets is wheelmade. They were also found in Levels 11b and 12 (figs. 3-28 and 3-29) and are of the type most widely distributed in Southeast Anatolia and North Syria (figs. 3-29 and 3-30; ill. 3-18).⁴⁹



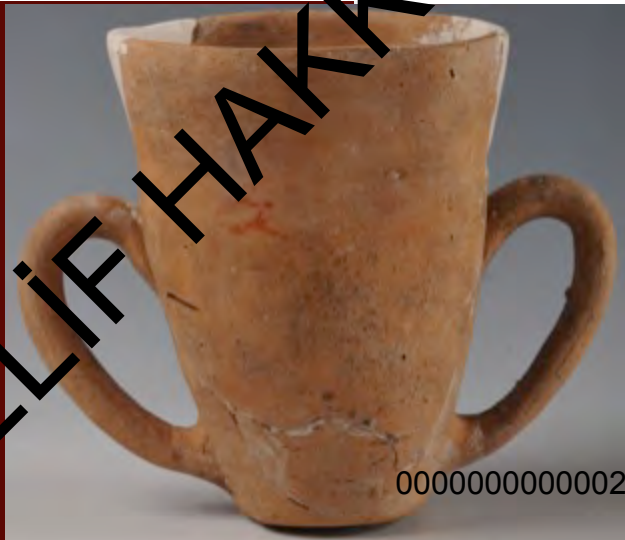
Fig. 3-28. Kültepe, Levels 11b-12, two-handled goblet



Fig. 3-29. Kültepe, Levels 11b-12, two-handled goblet



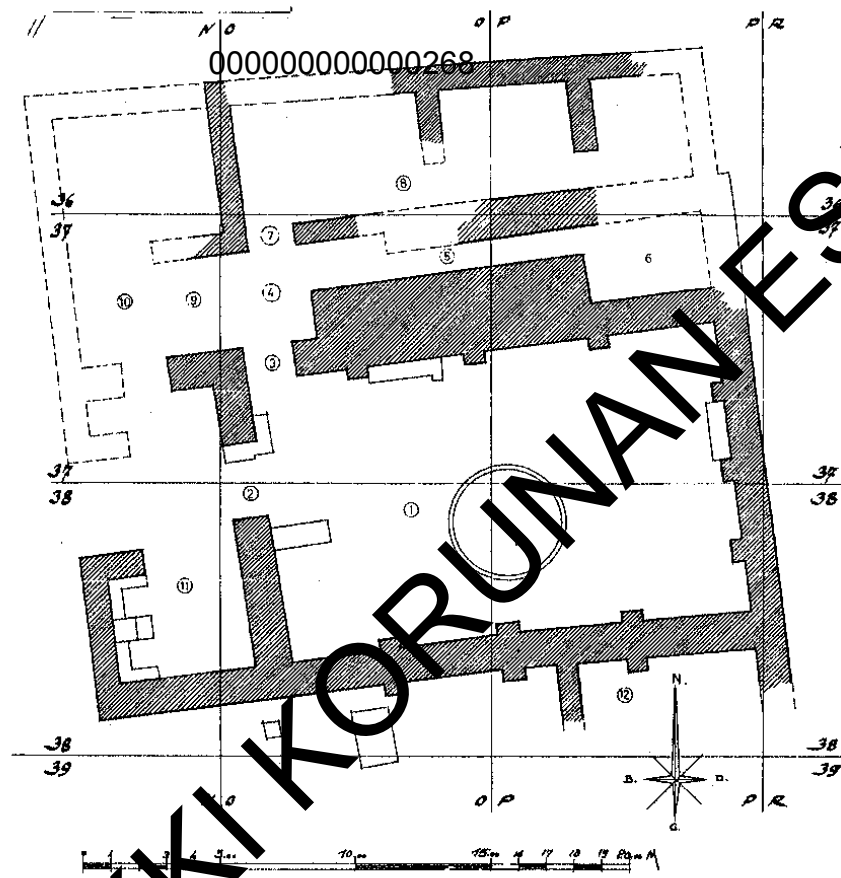
Fig. 3-30. Kültepe, Levels 11b-12, two-handled goblet



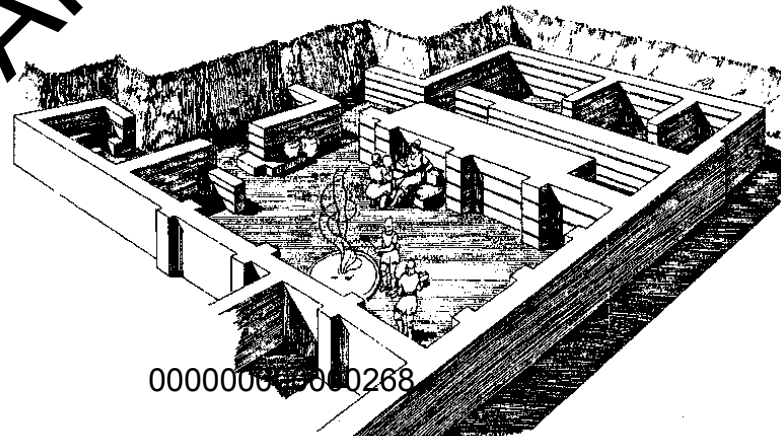
000000000000267

ATKÇ

ATKÇ



III. 3-1. Kültepe, Level Irb, plan of large building



III. 3-2. Kültepe, Level Irb, isometric reconstruction of large building

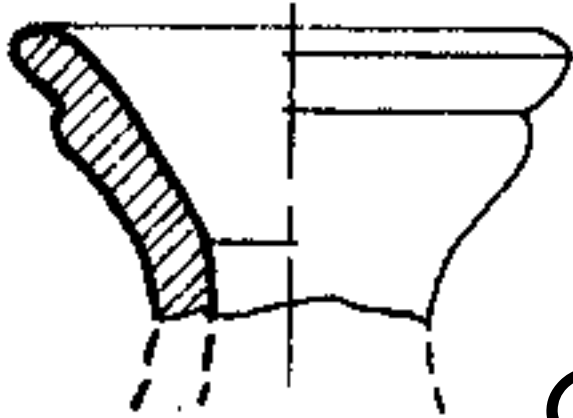
000000000000268



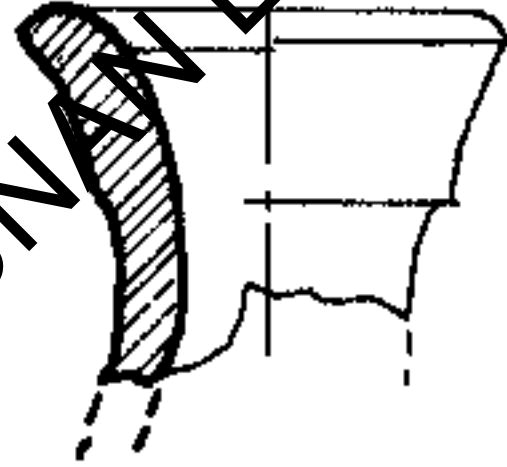
0000000000002







III. 3-6. Kültepe, Level 11b,
neck sherd



III. 3-7. Kültepe, Level 11b,
neck sherd

FK5/9

0000000000000273

ATKÇ



ATKÇ

0000000000000273

ATKÇ

© TELİF HAKKI KORUNAN ESER ©