

**KLA 220**  
**ANADOLU TARİHİ COĞRAFYASI**

**Pamphylia Bölgesi**



PAPHLAGONIA

BITHYNIA

MYSIA

GALATIA

PHRYGIA

LYCAONIA

CAPPADO

CARIA

PISIDIA

PAMPHYLIA

LYCIA

CILICIA

CYPRUS

Byzantium  
Constantinople

Calchedon  
Nicomedia

Diospolis  
Bithynium  
Claudiopolis

Gangra  
Germanicopolis

Amasia

Perinthus  
Heraclea Pontica

Constantinople

Nicomedia

Bithynium  
Claudiopolis

Gangra  
Germanicopolis

Amasia

Abydus

Prusa

Daschiium

Mt. Olympus

Gangra  
Germanicopolis

Amasia

Ida Mts.

Mt. Dindymus

Mt. Olympus

Gordieum

Gangra  
Germanicopolis

Amasia

Mithene

Pergamum

Ancyra

Cotyaeum

Gangra  
Germanicopolis

Amasia

Phocaea

Magnesia

Thyatira

Amorium

Gangra  
Germanicopolis

Amasia

Erythrae

Sardis

Philadelphia

Synnada

Gangra  
Germanicopolis

Amasia

Ephesus

Colophon

Laodicea

Eumonia

Gangra  
Germanicopolis

Amasia

Miletus

Alabanda

Sagalassus

Iconium

Gangra  
Germanicopolis

Amasia

Patmos

Leros

Mytilene

Antioch

Gangra  
Germanicopolis

Amasia

Calymna

Cos

Amorgus

Aspendus

Gangra  
Germanicopolis

Amasia

Mytilene

Mytilene

Mytilene

Mytilene

Gangra  
Germanicopolis

Amasia

Mytilene

Mytilene

Mytilene

Mytilene

Gangra  
Germanicopolis

Amasia

Mytilene

Mytilene

Mytilene

Mytilene

Gangra  
Germanicopolis

Amasia

Mytilene

Mytilene

Mytilene

Mytilene

Gangra  
Germanicopolis

Amasia

Mytilene

Mytilene

Mytilene

Mytilene

Gangra  
Germanicopolis

Amasia

Mytilene

Mytilene

Mytilene

Mytilene

Gangra  
Germanicopolis

Amasia

Mytilene

Mytilene

Mytilene

Mytilene

Gangra  
Germanicopolis

Amasia

Mytilene

Mytilene

Mytilene

Mytilene

Gangra  
Germanicopolis

Amasia

Mytilene

Mytilene

Mytilene

Mytilene

Gangra  
Germanicopolis

Amasia

Mytilene

Mytilene

Mytilene

Mytilene

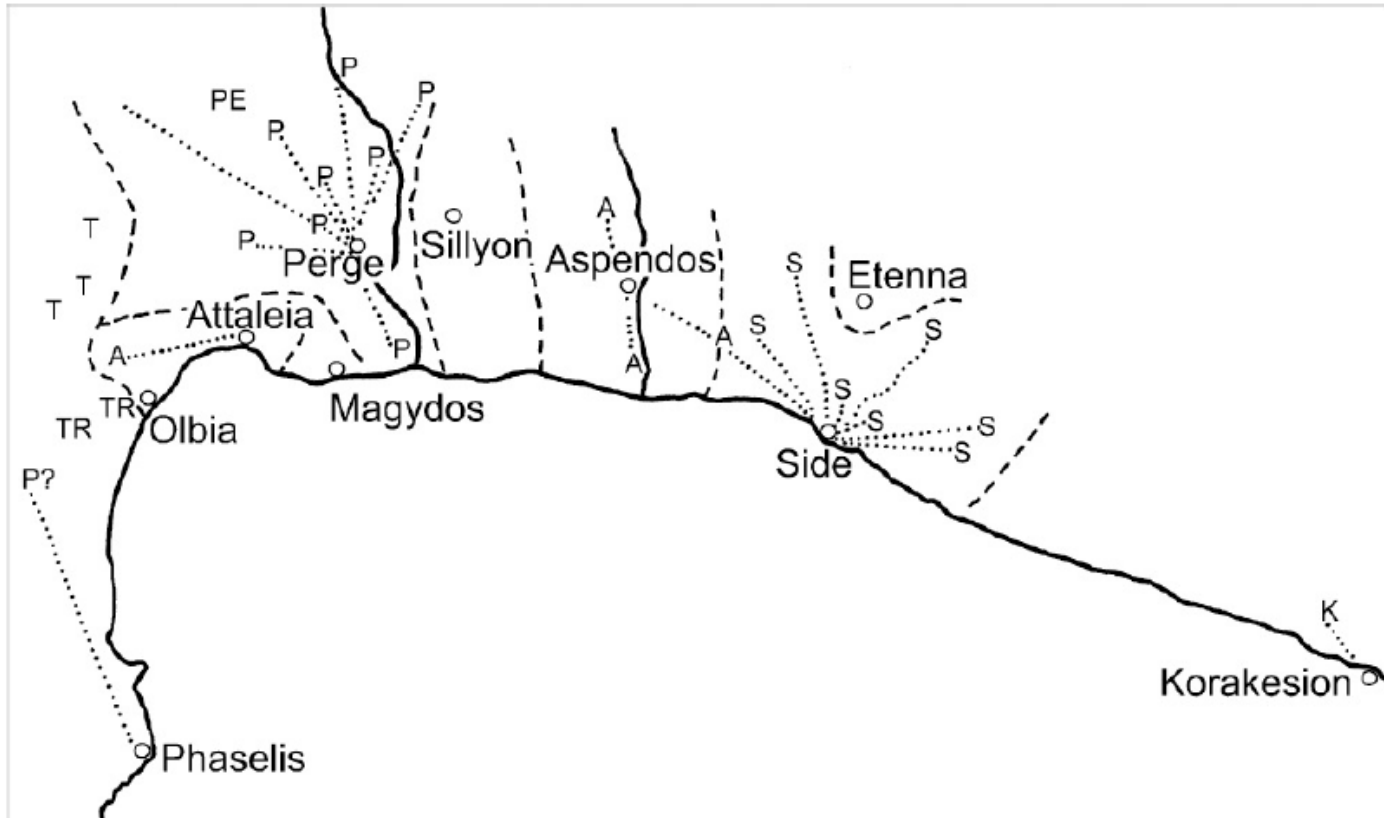
Gangra  
Germanicopolis

Amasia

## PAMPHYLIA BÖLGESİ

(Toros Dağlarıyla kıyı arası kıyı düzlüğü, Pamphylia Bölgesi, batıda Acı su, doğuda Silinti ırmağı)

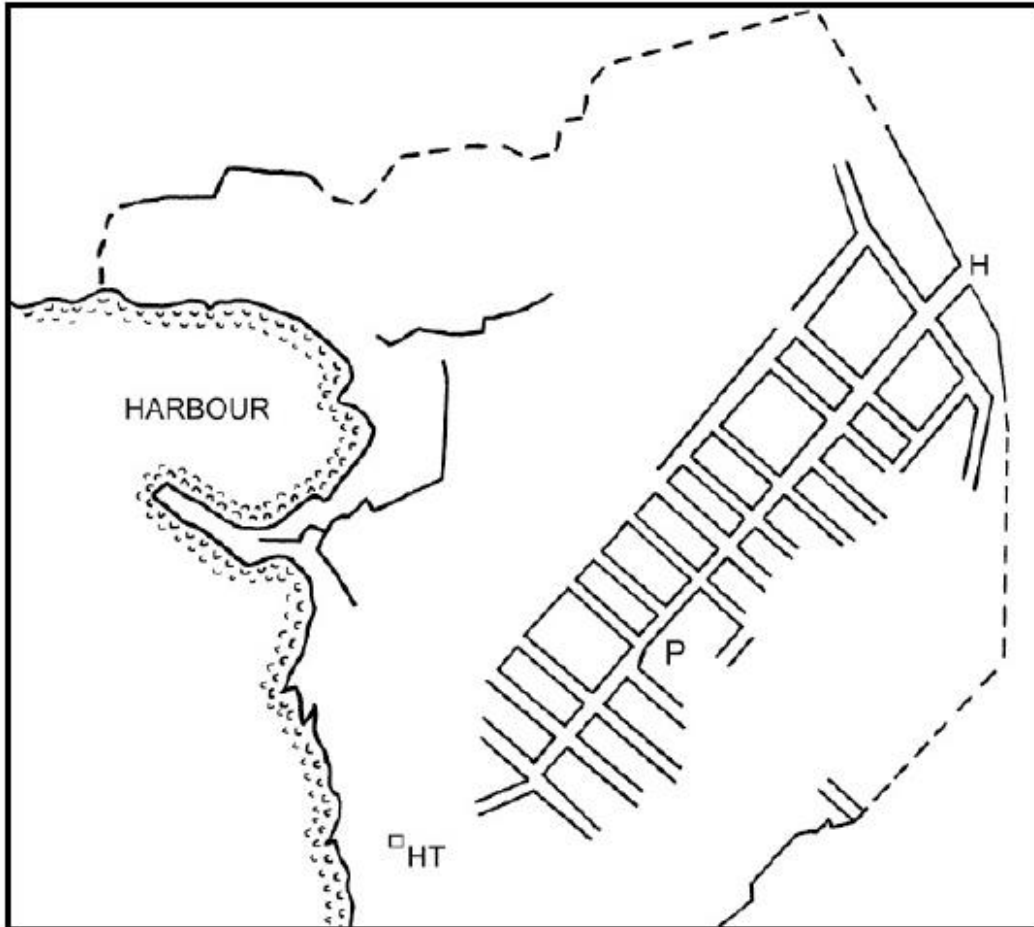
Attaleia	: Antalya
Magydos	: Karpuzkaldıran
Perge	: Aksu
Sillyon	: Yanköy hisarı
Aspendos	: Belkıs
Side	: Side
Korakesion	: Alanya
Selinus	: Gazipaşa



..... LINKS BETWEEN CITIES AND VILLAGES (PE – Pednellisos)  
 - - - - SUGGESTED CHORAI BOUNDARIES (TR – Trebenna)  
 (T – Termessos)

*Map 2. The Cities' Territories*

# Attaleia

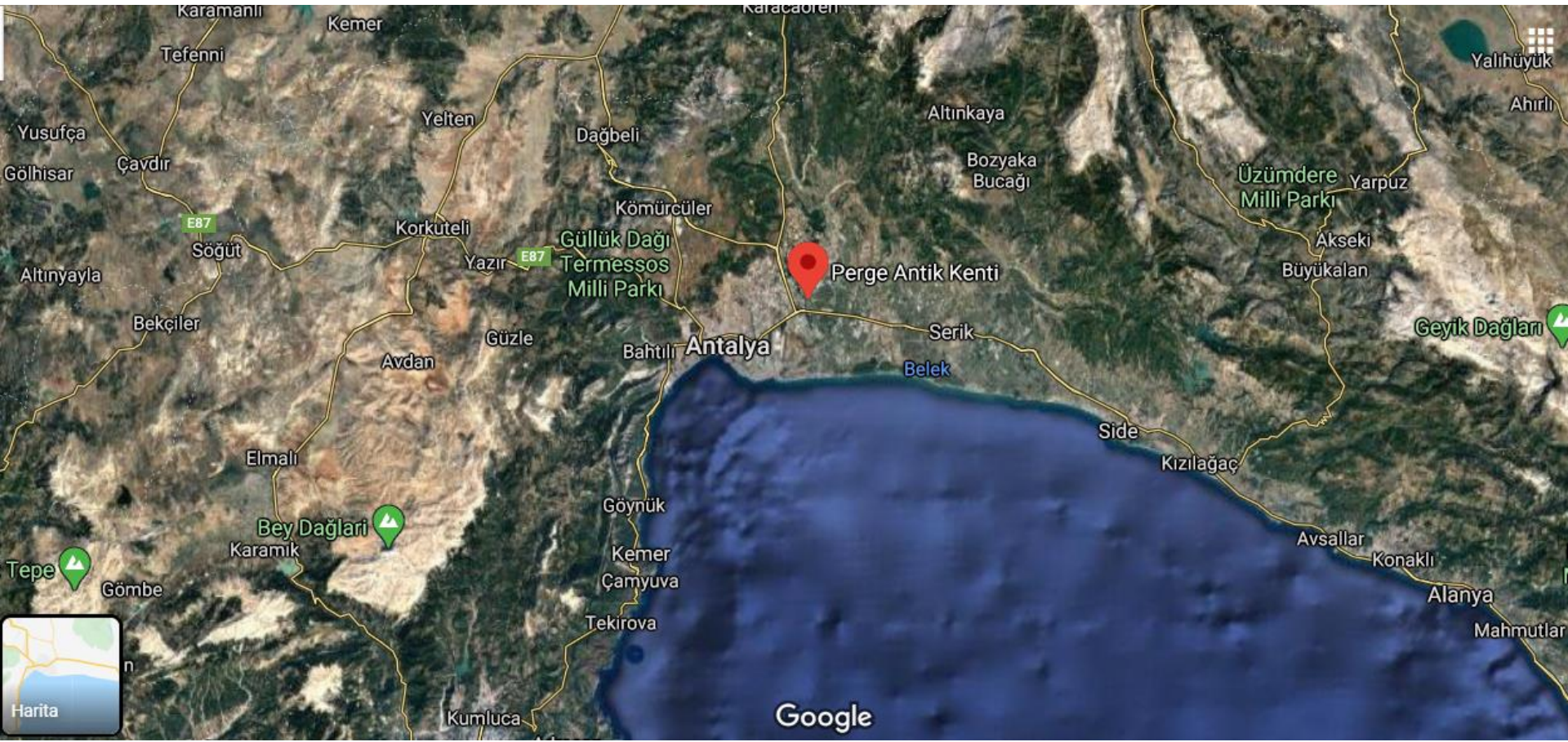


- KNOWN WALLS
- - - CONJECTURED WALLS
- HT HIDIRLIK TOWER
- H HADRIAN GATE
- P PANAGHIA CHURCH  
(Kesik Minare)

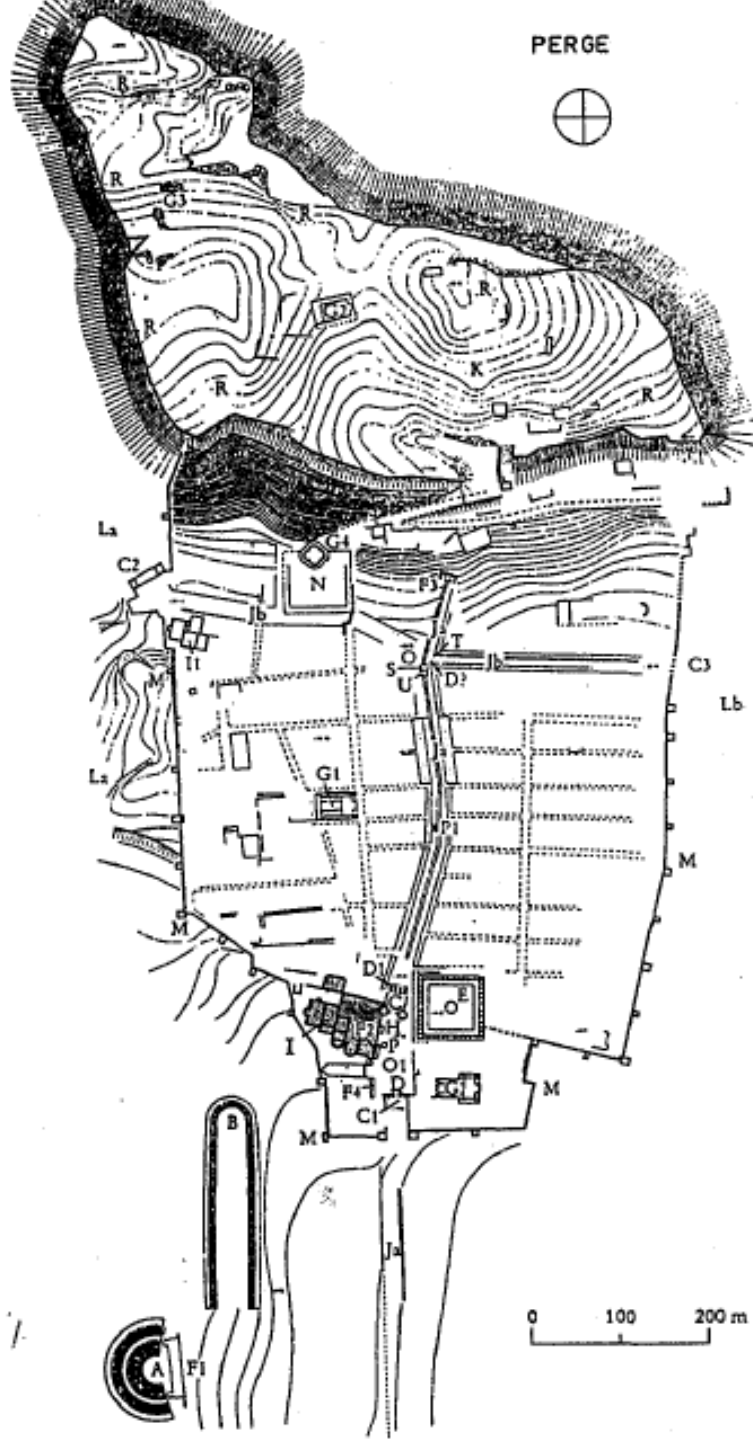
Map 13. Attaleia: traces of grid street pattern

# Hadrianus Kapısı



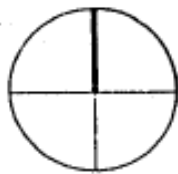


- A Tiyatro  
 B Stadion  
 C1 Şehir Kapısı  
 C2 Şehir Kapısı  
 C3 Şehir Kapısı  
 D Zafer Takı  
 D1 Zafer Takı  
 D2 Zafer Takı  
 E Agora  
 F1 Nymphaion  
 F2 Nymphaion  
 F3 Nymphaion  
 F4 Nymphaion  
 G Bazilika  
 G1 Bazilika  
 G2 Kilise  
 G3 Kilise  
 G4 Kilise  
 H Ana Giriş  
 I Güney Hamam  
 I1 Kuzey Hamam  
 Ja Sütunlu Cadde  
 Jb Sütunlu Cadde  
 K Akropolis  
 La Nekropolis  
 Lb Nekropolis  
 M Şehir Suru  
 N Palaestra  
 O Kavşak  
 O1 Forum  
 P Anıt  
 P1 Anıt  
 R Sarnıç  
 S Altar  
 T Anıt  
 U Şapel

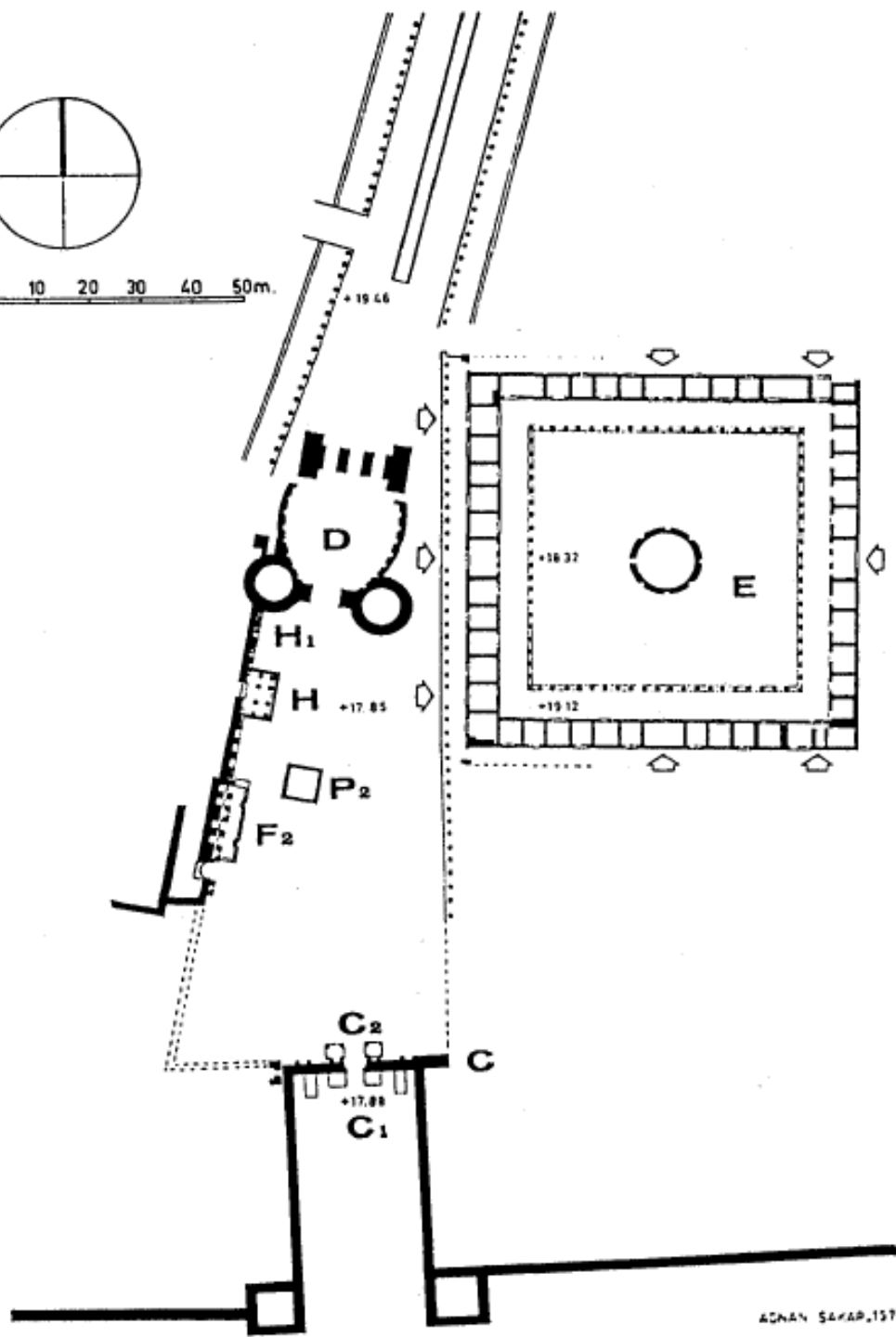








0 10 20 30 40 50m.











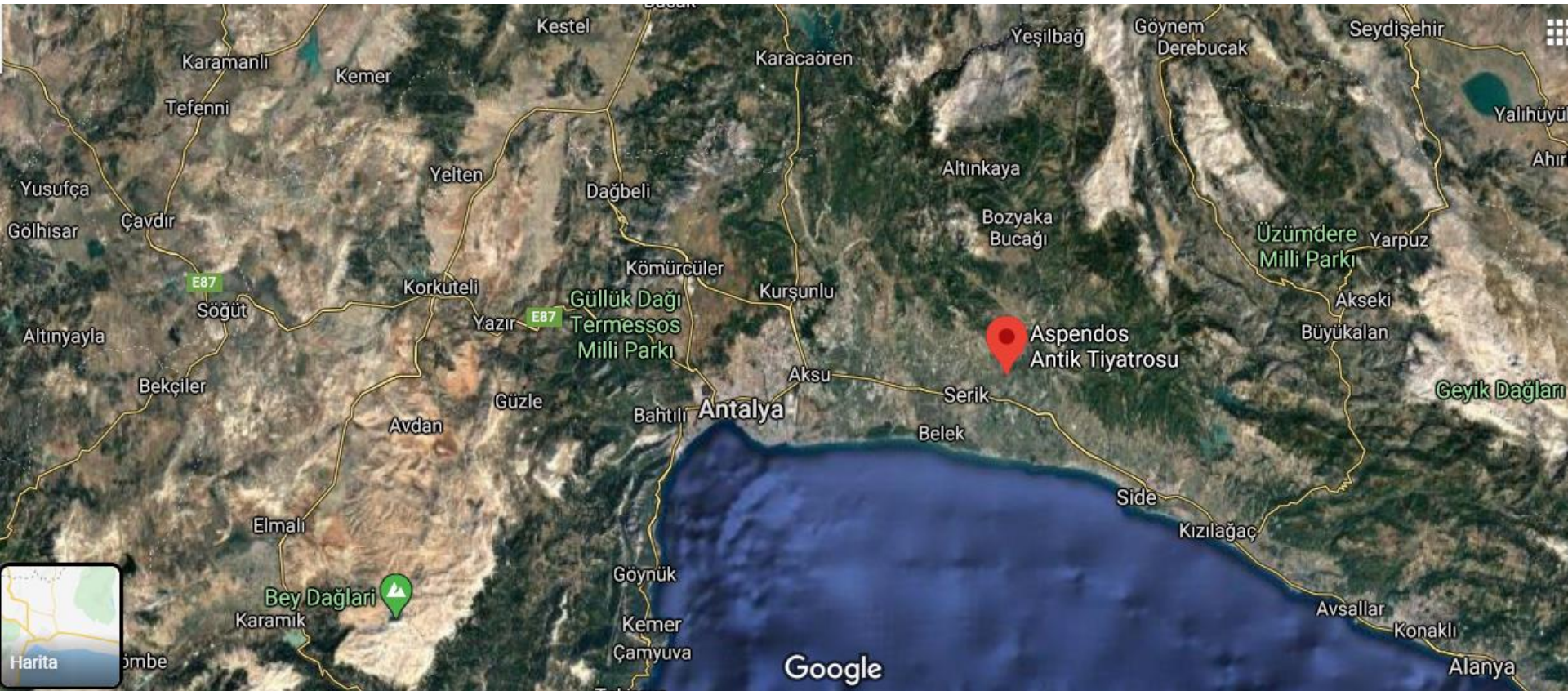












# PLAN OF ASPENDOS

- A - South Gate
- B - East Gate
- C - North Gate
- D - Aqueduct
- E - Agora
- F - Market Hall
- G - Basilica
- H - Nymphaeum
- I - Bouleuterion
- K - Exedra
- L - Temple
- M - Theatre
- N - Stadium
- O - Graves
- P - Bath
- Q - Gymnasium
- R - Cisterns
- S - Modern Road
- T - Single Arch
- U - City Square
- V - Street





# Agora



# Nymphäum

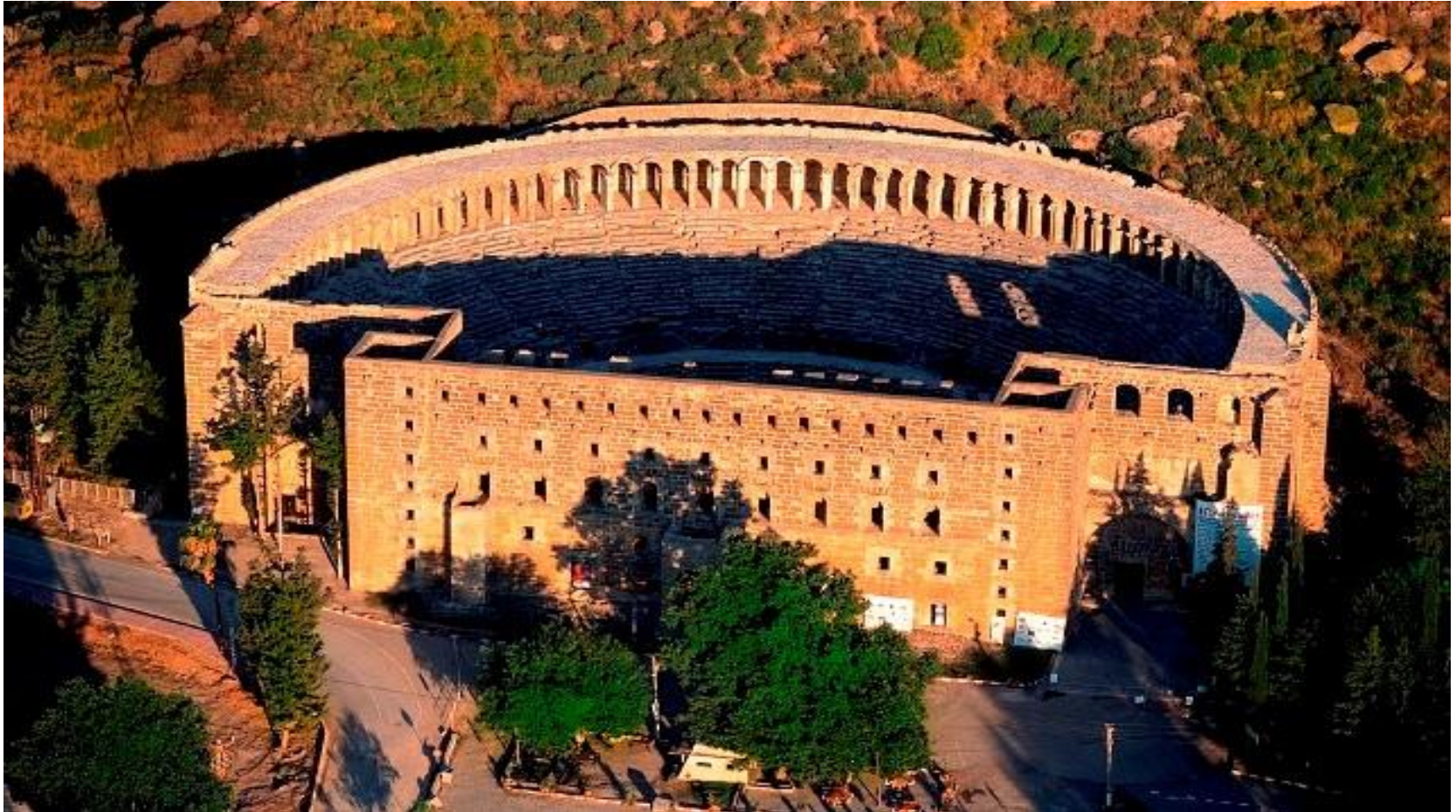


# Roma arşı Bazilikası





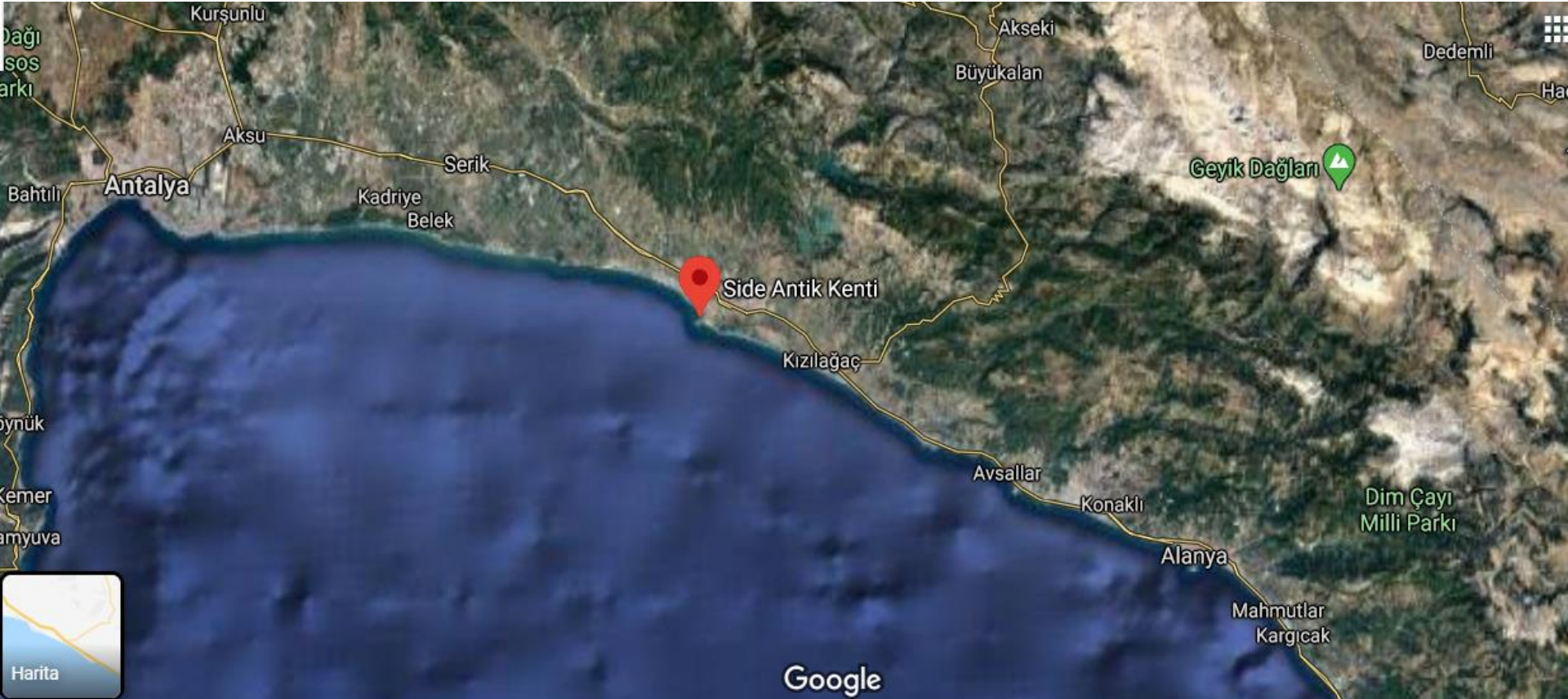






# Stadion

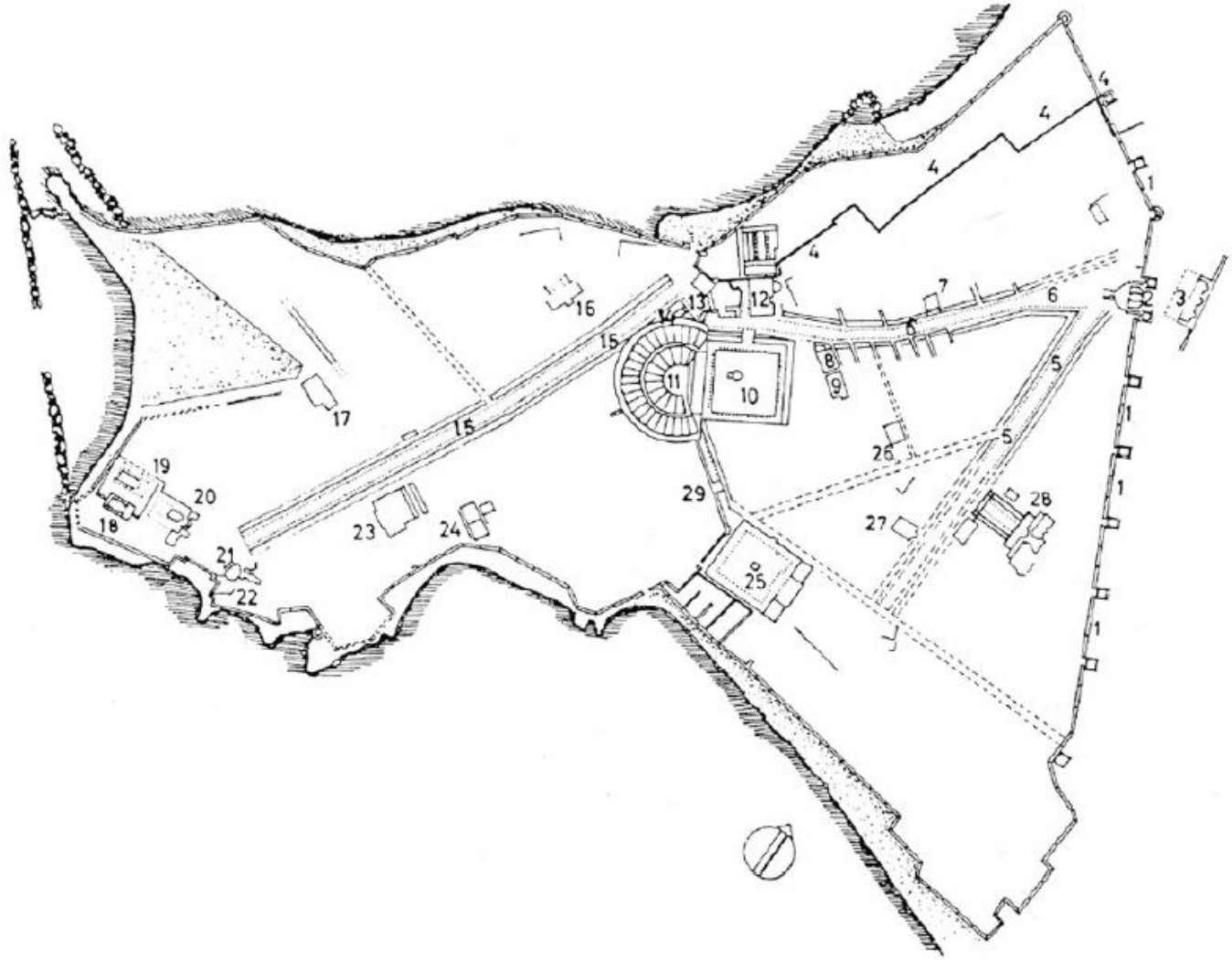




ANTIK KENT  
**SİDE**  
M.S. VI. YÜZYIL



- |                                 |              |                  |
|---------------------------------|--------------|------------------|
| A Şehir surları                 | D Evler      | G Pazar yeri     |
| B Şehir giriş kapıları          | E Mahalleler | H Roma Tiyatrosu |
| C Sütunlu caddeler              | F Agora      | I Su kemerleri   |
| J Su sarnıçları                 | M Hamamlar   | P Bazilikalar    |
| K Nekropol (Şehir mezarlıkları) | N Limanlar   | Q Kilseler       |
| L Çeşmeler                      | O Tapınaklar | R Saraylar       |
|                                 |              | S Misafirhane    |

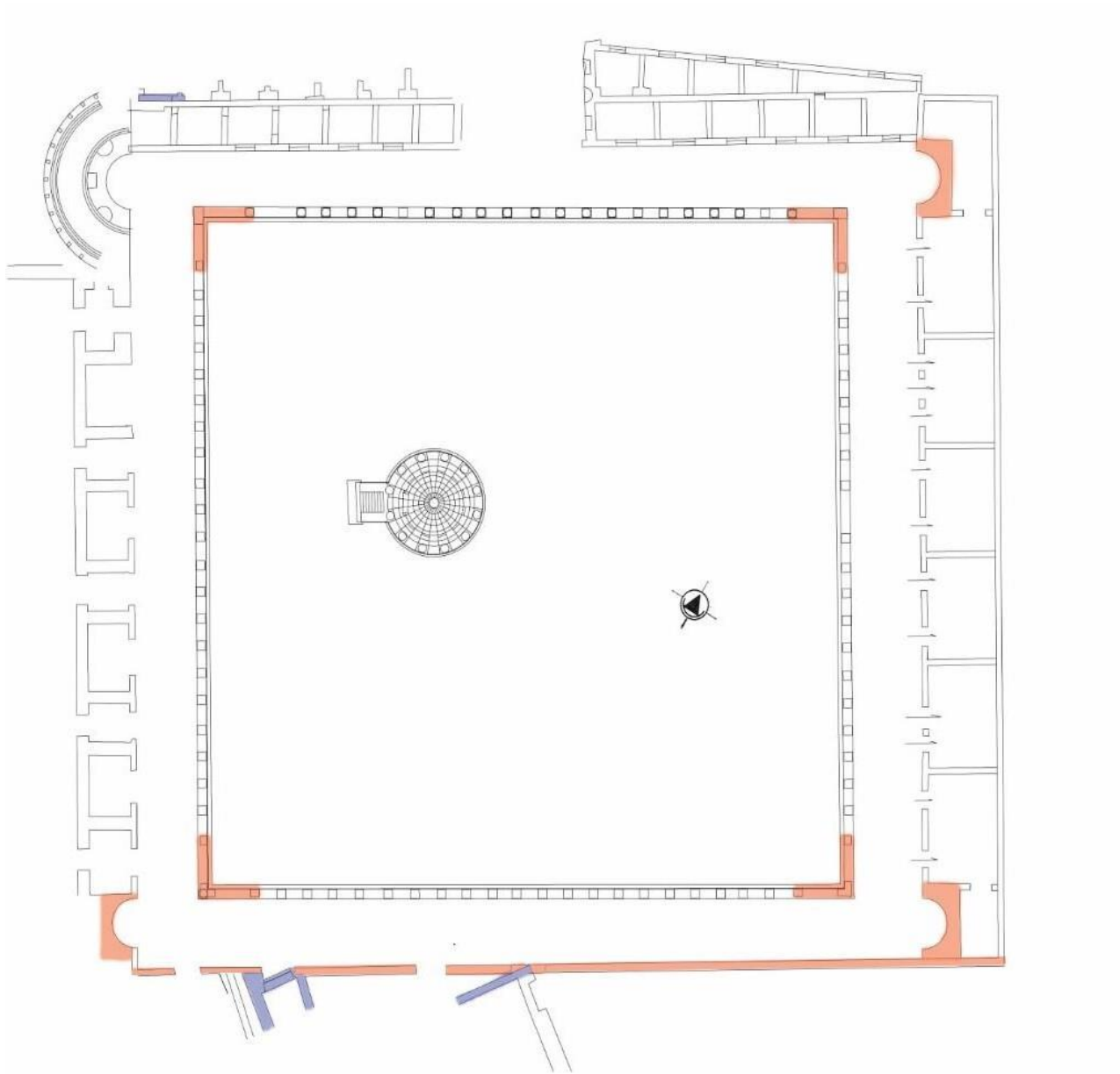


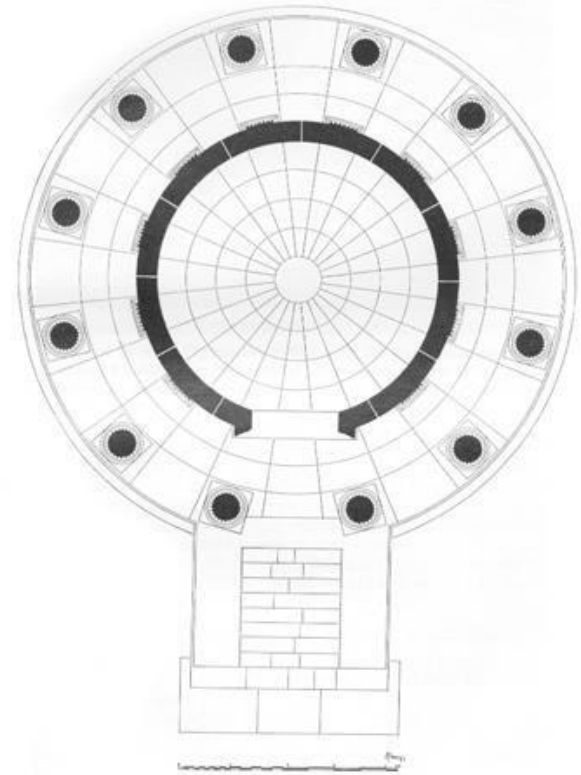


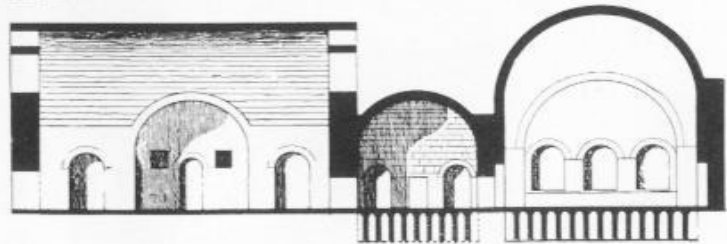
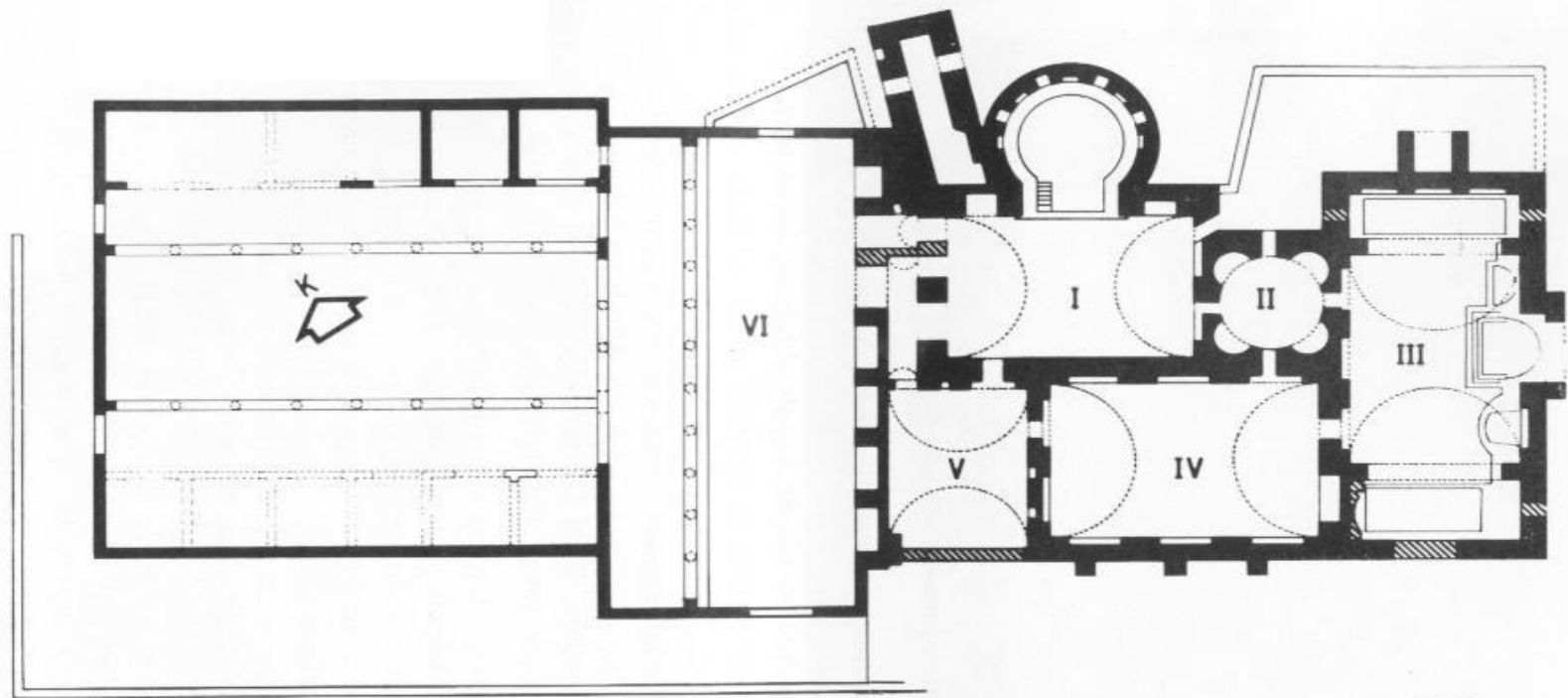


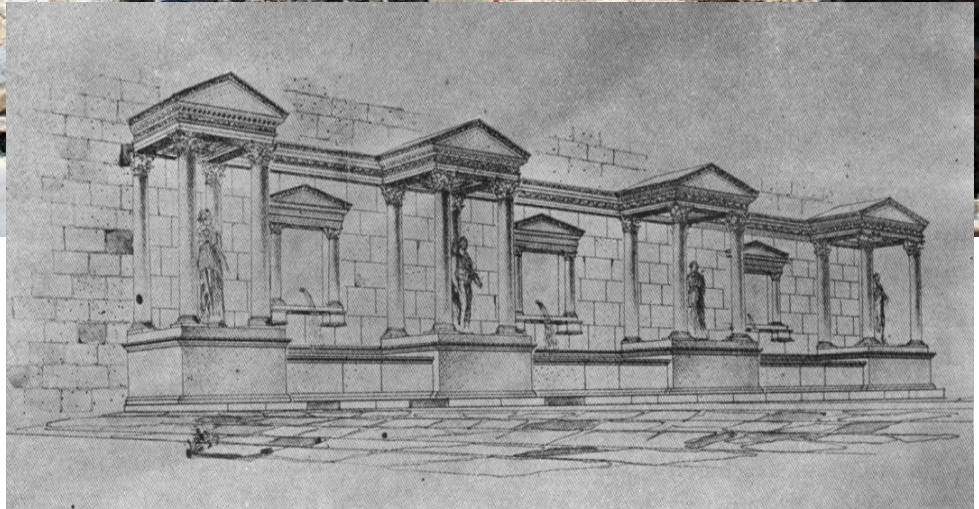












**KLA 220**  
**ANADOLU TARİHİ COĞRAFYASI**

**Pisidia Bölgesi**

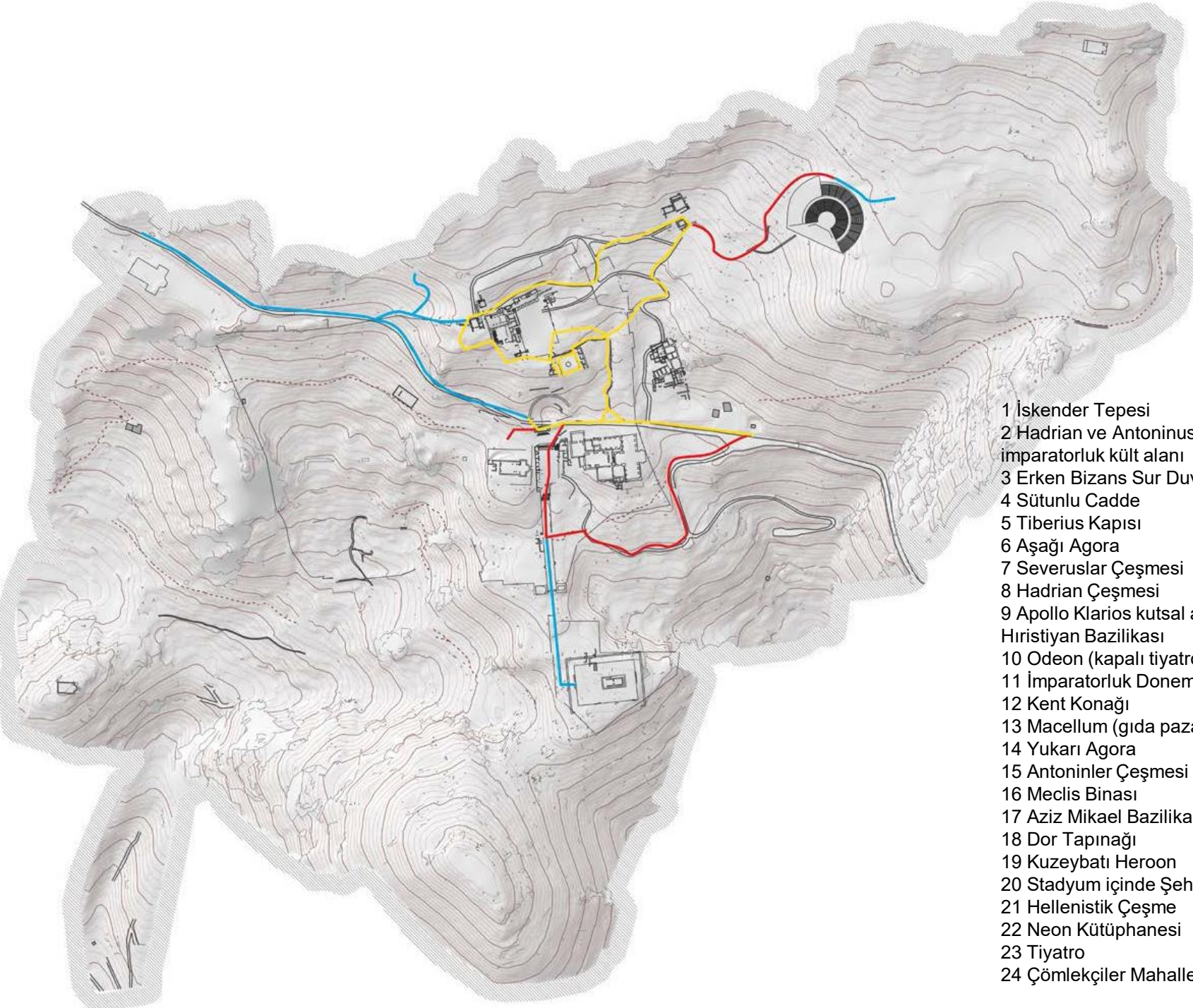




## PİSİDİA BÖLGESİ

(Burdur ve İsparta İlleri, Antalya'nın dađlık kuzey ilçeleri Pisidia Bölgesidir)

Termessos	: Güllük
Sagalassos	: Ağlasun
Selge	: Zerk köyü
Kremna	: Çamlık
Pednelissos	: Gebiz yakını, Kozan
Antiokheia	: Yalvaç
Komama	: Şerefönü
Olbasa	: Belenli
Parlais	: Barla
Prostanna	: Eğridir
Misthia	: Beyşehir
Ariassos	: Bademağacı
Adada	: Karabavlu-Karadiken
İsinda	: Kışlar
Apollonia	: Uluborlu



- 1 İskender Tepesi
- 2 Hadrian ve Antoninus Pius imparatorluk kült alanı
- 3 Erken Bizans Sur Duvarı
- 4 Sütunlu Cadde
- 5 Tiberius Kapısı
- 6 Aşağı Agora
- 7 Severuslar Çeşmesi
- 8 Hadrian Çeşmesi
- 9 Apollo Klarios kutsal alanı içinde Hristiyan Bazilikası
- 10 Odeon (kapalı tiyatro)
- 11 İmparatorluk Donemi Roma Hamamı
- 12 Kent Konağı
- 13 Macellum (gıda pazarı)
- 14 Yukarı Agora
- 15 Antoninler Çeşmesi
- 16 Meclis Binası
- 17 Aziz Mikael Bazilikası
- 18 Dor Tapınağı
- 19 Kuzeybatı Heroon
- 20 Stadyum içinde Şehitlik Bazilikası
- 21 Hellenistik Çeşme
- 22 Neon Kütüphanesi
- 23 Tiyatro
- 24 Çömlekçiler Mahallesi





