

Fuzzy 2

Murat Osmanoglu

Maximizing and Minimizing Set

- the maximizing set M of a function is defined as a fuzzy set

Maximizing and Minimizing Set

- the maximizing set M of a function is defined as a fuzzy set

$$\text{for all } x \text{ in } X, \quad \mu_M(x) = \frac{f(x) - \inf(f)}{\sup(f) - \inf(f)}$$

Maximizing and Minimizing Set

- the maximizing set M of a function is defined as a fuzzy set

$$\text{for all } x \text{ in } X, \quad \mu_M(x) = \frac{f(x) - \inf(f)}{\sup(f) - \inf(f)}$$

(the possibility that the value x maximizes the function f)

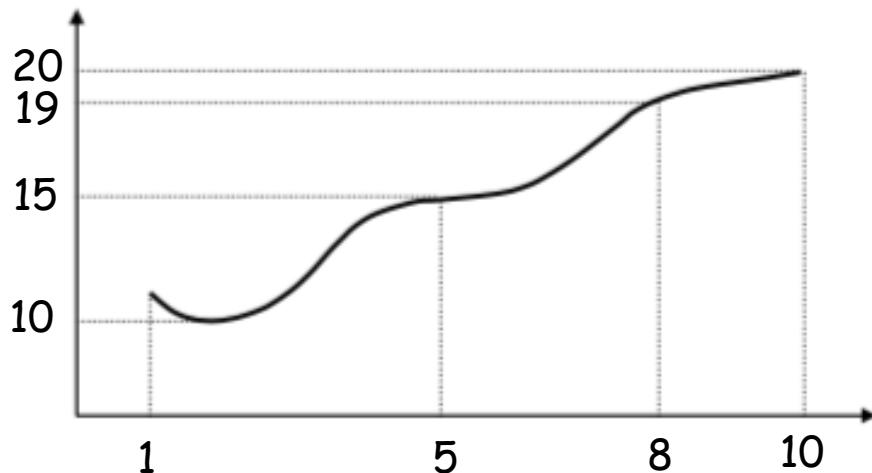
Maximizing and Minimizing Set

- the maximizing set M of a function is defined as a fuzzy set

$$\text{for all } x \text{ in } X, \quad \mu_M(x) = \frac{f(x) - \inf(f)}{\sup(f) - \inf(f)}$$

(the possibility that the value x maximizes the function f)

- consider the function f given with the following figure



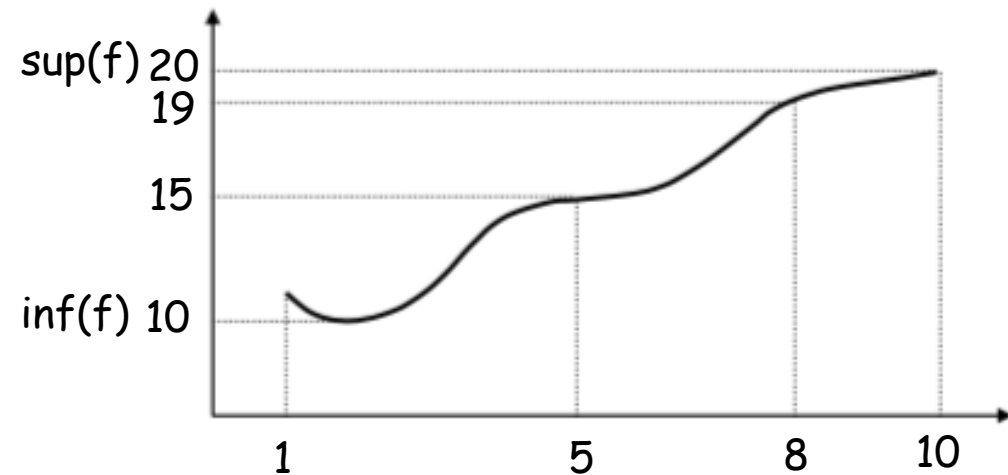
Maximizing and Minimizing Set

- the maximizing set M of a function is defined as a fuzzy set

$$\text{for all } x \text{ in } X, \quad \mu_M(x) = \frac{f(x) - \inf(f)}{\sup(f) - \inf(f)}$$

(the possibility that the value x maximizes the function f)

- consider the function f given with the following figure



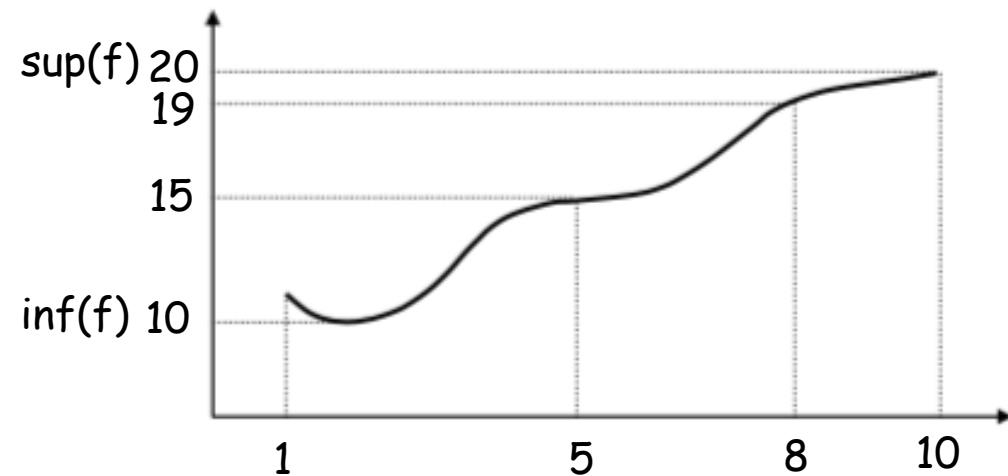
Maximizing and Minimizing Set

- the maximizing set M of a function is defined as a fuzzy set

$$\text{for all } x \text{ in } X, \quad \mu_M(x) = \frac{f(x) - \inf(f)}{\sup(f) - \inf(f)}$$

(the possibility that the value x maximizes the function f)

- consider the function f given with the following figure



$$\mu_M(1) = (11 - 10) / (20 - 10) = 0.1$$

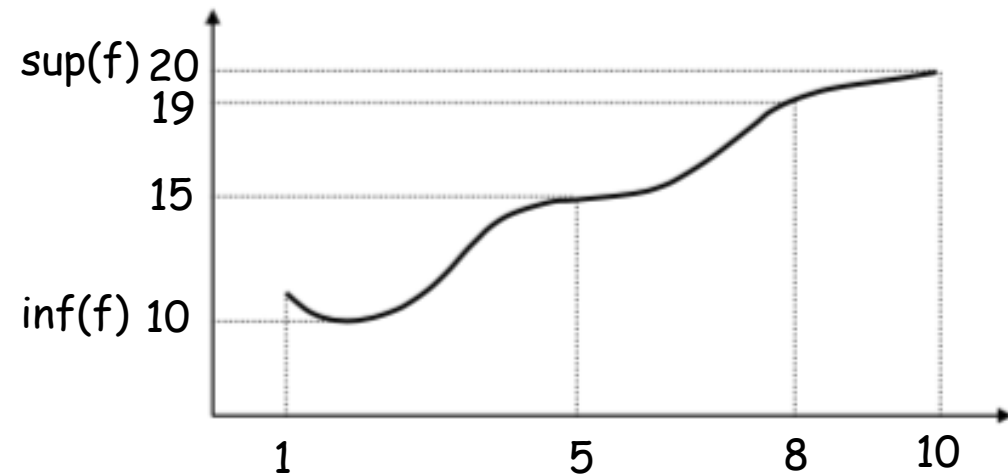
Maximizing and Minimizing Set

- the maximizing set M of a function is defined as a fuzzy set

$$\text{for all } x \text{ in } X, \quad \mu_M(x) = \frac{f(x) - \inf(f)}{\sup(f) - \inf(f)}$$

(the possibility that the value x maximizes the function f)

- consider the function f given with the following figure



$$\mu_M(1) = (11 - 10) / (20 - 10) = 0.1$$

$$\mu_M(5) = (15 - 10) / (20 - 10) = 0.5$$

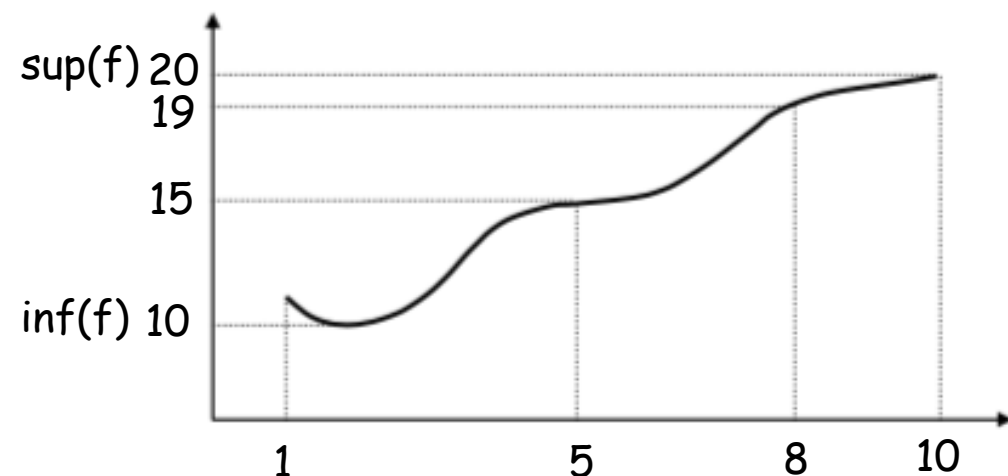
Maximizing and Minimizing Set

- the maximizing set M of a function is defined as a fuzzy set

$$\text{for all } x \text{ in } X, \quad \mu_M(x) = \frac{f(x) - \inf(f)}{\sup(f) - \inf(f)}$$

(the possibility that the value x maximizes the function f)

- consider the function f given with the following figure



$$\mu_M(1) = (11 - 10) / (20 - 10) = 0.1$$

$$\mu_M(5) = (15 - 10) / (20 - 10) = 0.5$$

$$\mu_M(8) = (19 - 10) / (20 - 10) = 0.9$$

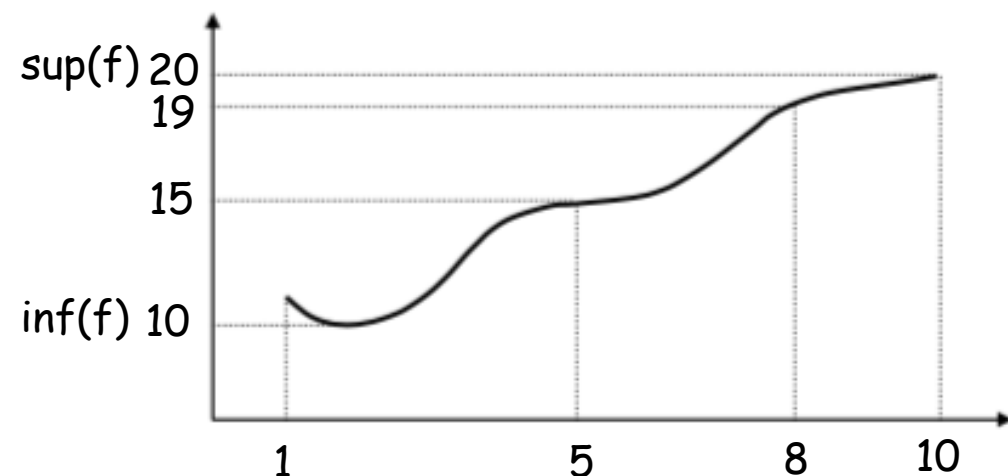
Maximizing and Minimizing Set

- the maximizing set M of a function is defined as a fuzzy set

$$\text{for all } x \text{ in } X, \quad \mu_M(x) = \frac{f(x) - \inf(f)}{\sup(f) - \inf(f)}$$

(the possibility that the value x maximizes the function f)

- consider the function f given with the following figure



$$\mu_M(1) = (11 - 10) / (20 - 10) = 0.1$$

$$\mu_M(5) = (15 - 10) / (20 - 10) = 0.5$$

$$\mu_M(8) = (19 - 10) / (20 - 10) = 0.9$$

$$\mu_M(10) = (20 - 10) / (20 - 10) = 1$$

Maximizing and Minimizing Set

- the maximizing set M of a function is defined as a fuzzy set

$$\text{for all } x \text{ in } X, \quad \mu_M(x) = \frac{f(x) - \inf(f)}{\sup(f) - \inf(f)}$$

(the possibility that the value x maximizes the function f)

- consider the function $f(x) = \cos x$

Maximizing and Minimizing Set

- the maximizing set M of a function is defined as a fuzzy set

$$\text{for all } x \text{ in } X, \quad \mu_M(x) = \frac{f(x) - \inf(f)}{\sup(f) - \inf(f)}$$

(the possibility that the value x maximizes the function f)

- consider the function $f(x) = \cos x$

define the maximizing set of $f(x)$

Maximizing and Minimizing Set

- the maximizing set M of a function is defined as a fuzzy set

$$\text{for all } x \text{ in } X, \quad \mu_M(x) = \frac{f(x) - \inf(f)}{\sup(f) - \inf(f)}$$

(the possibility that the value x maximizes the function f)

- consider the function $f(x) = \cos x$

define the maximizing set of $f(x)$

$$\mu_M(x) = \frac{f(x) - \inf(f)}{\sup(f) - \inf(f)}$$

Maximizing and Minimizing Set

- the maximizing set M of a function is defined as a fuzzy set

$$\text{for all } x \text{ in } X, \quad \mu_M(x) = \frac{f(x) - \inf(f)}{\sup(f) - \inf(f)}$$

(the possibility that the value x maximizes the function f)

- consider the function $f(x) = \cos x$

define the maximizing set of $f(x)$

$$\mu_M(x) = \frac{f(x) - \inf(f)}{\sup(f) - \inf(f)} = \frac{\cos x - (-1)}{1 - (-1)}$$

Maximizing and Minimizing Set

- the maximizing set M of a function is defined as a fuzzy set

$$\text{for all } x \text{ in } X, \quad \mu_M(x) = \frac{f(x) - \inf(f)}{\sup(f) - \inf(f)}$$

(the possibility that the value x maximizes the function f)

- consider the function $f(x) = \cos x$

define the maximizing set of $f(x)$

$$\mu_M(x) = \frac{f(x) - \inf(f)}{\sup(f) - \inf(f)} = \frac{\cos x - (-1)}{1 - (-1)} = \frac{\cos x + 1}{2}$$

Maximizing and Minimizing Set

- the maximizing set M of a function is defined as a fuzzy set

$$\text{for all } x \text{ in } X, \quad \mu_M(x) = \frac{f(x) - \inf(f)}{\sup(f) - \inf(f)}$$

(the possibility that the value x maximizes the function f)

- consider the function $f(x) = \cos x$

define the maximizing set of $f(x)$

$$\mu_M(x) = \frac{f(x) - \inf(f)}{\sup(f) - \inf(f)} = \frac{\cos x - (-1)}{1 - (-1)} = \frac{\cos x + 1}{2}$$

$$\mu_M(\pi/3) = \frac{\cos(\pi/3) + 1}{2} = 3/4$$

Integration of Fuzzy Function

Integration of fuzzifying function in crisp interval

Integration of Fuzzy Function

Integration of fuzzifying function in crisp interval

- consider the fuzzy bunch of function $F = \{(f_1, 0.6), (f_2, 0.9), (f_3, 0.5)\}$
where $f_1(x) = 3x$, $f_2(x) = x^2$, $f_3(x) = x - 1$

Integration of Fuzzy Function

Integration of fuzzifying function in crisp interval

- consider the fuzzy bunch of function $F = \{(f_1, 0.6), (f_2, 0.9), (f_3, 0.5)\}$
where $f_1(x) = 3x$, $f_2(x) = x^2$, $f_3(x) = x - 1$
- calculate the integration of F in $X = [1, 2]$

Integration of Fuzzy Function

Integration of fuzzifying function in crisp interval

- consider the fuzzy bunch of function $F = \{(f_1, 0.6), (f_2, 0.9), (f_3, 0.5)\}$
where $f_1(x) = 3x$, $f_2(x) = x^2$, $f_3(x) = x - 1$
- calculate the integration of F in $X = [1, 2]$

$$I_1(1,2) = \int_1^2 3x dx = \frac{9}{2}$$

Integration of Fuzzy Function

Integration of fuzzifying function in crisp interval

- consider the fuzzy bunch of function $F = \{(f_1, 0.6), (f_2, 0.9), (f_3, 0.5)\}$ where $f_1(x) = 3x$, $f_2(x) = x^2$, $f_3(x) = x - 1$
- calculate the integration of F in $X = [1, 2]$

$$I_1(1,2) = \int_1^2 3x dx = \frac{9}{2}$$

$$I_2(1,2) = \int_1^2 x^2 dx = \frac{7}{3}$$

Integration of Fuzzy Function

Integration of fuzzifying function in crisp interval

- consider the fuzzy bunch of function $F = \{(f_1, 0.6), (f_2, 0.9), (f_3, 0.5)\}$ where $f_1(x) = 3x$, $f_2(x) = x^2$, $f_3(x) = x - 1$
- calculate the integration of F in $X = [1, 2]$

$$I_1(1,2) = \int_1^2 3x dx = \frac{9}{2}$$

$$I_2(1,2) = \int_1^2 x^2 dx = \frac{7}{3}$$

$$I_3(1,2) = \int_1^2 (x - 1) dx = \frac{1}{2}$$

Integration of Fuzzy Function

Integration of fuzzifying function in crisp interval

- consider the fuzzy bunch of function $F = \{(f_1, 0.6), (f_2, 0.9), (f_3, 0.5)\}$ where $f_1(x) = 3x$, $f_2(x) = x^2$, $f_3(x) = x - 1$
- calculate the integration of F in $X = [1, 2]$

$$I_1(1,2) = \int_1^2 3x dx = \frac{9}{2}$$

$$I_2(1,2) = \int_1^2 x^2 dx = \frac{7}{3}$$

$$I_3(1,2) = \int_1^2 (x - 1) dx = \frac{1}{2}$$

$$\tilde{r}(1,2) = \left\{ \left(\frac{9}{2}, 0.6 \right), \left(\frac{7}{3}, 0.9 \right), \left(\frac{1}{2}, 0.5 \right) \right\}$$

Integration of Fuzzy Function

Integration of crispfunction in fuzzy interval

Integration of Fuzzy Function

Integration of crispfunction in fuzzy interval

- consider the function $f(x) = 4$

Integration of Fuzzy Function

Integration of crispfunction in fuzzy interval

- consider the function $f(x) = 4$
- calculate the integration of f in $[A,B]$
where $A = \{(1, 0.5), (2, 1.0), (3, 0.7)\}$ and $B = \{(3, 0.6), (4, 1.0), (5, 0.3)\}$

Integration of Fuzzy Function

Integration of crispfunction in fuzzy interval

- consider the function $f(x) = 4$
 - calculate the integration of f in $[A,B]$
where $A = \{(1, 0.5), (2, 1.0), (3, 0.7)\}$ and $B = \{(3, 0.6), (4, 1.0), (5, 0.3)\}$
- $I(1,3) = 8$ with $\min \{ \mu_A(1), \mu_B(3) \} = 0.5$

Integration of Fuzzy Function

Integration of crispfunction in fuzzy interval

- consider the function $f(x) = 4$
- calculate the integration of f in $[A,B]$
where $A = \{(1, 0.5), (2, 1.0), (3, 0.7)\}$ and $B = \{(3, 0.6), (4, 1.0), (5, 0.3)\}$

$$I(1,3) = 8 \text{ with } \min \{ \mu_A(1), \mu_B(3) \} = 0.5$$

$$I(1,4) = 12 \text{ with } \min \{ \mu_A(1), \mu_B(4) \} = 0.5$$

Integration of Fuzzy Function

Integration of crispfunction in fuzzy interval

- consider the function $f(x) = 4$
- calculate the integration of f in $[A,B]$
where $A = \{(1, 0.5), (2, 1.0), (3, 0.7)\}$ and $B = \{(3, 0.6), (4, 1.0), (5, 0.3)\}$

$$I(1,3) = 8 \text{ with } \min \{ \mu_A(1), \mu_B(3) \} = 0.5$$

$$I(1,4) = 12 \text{ with } \min \{ \mu_A(1), \mu_B(4) \} = 0.5$$

$$I(1,5) = 20 \text{ with } \min \{ \mu_A(1), \mu_B(5) \} = 0.3$$

Integration of Fuzzy Function

Integration of crispfunction in fuzzy interval

- consider the function $f(x) = 4$
- calculate the integration of f in $[A,B]$
where $A = \{(1, 0.5), (2, 1.0), (3, 0.7)\}$ and $B = \{(3, 0.6), (4, 1.0), (5, 0.3)\}$

$$I(1,3) = 8 \text{ with } \min \{ \mu_A(1), \mu_B(3) \} = 0.5$$

$$I(1,4) = 12 \text{ with } \min \{ \mu_A(1), \mu_B(4) \} = 0.5$$

$$I(1,5) = 20 \text{ with } \min \{ \mu_A(1), \mu_B(5) \} = 0.3$$

$$I(2,3) = 4 \text{ with } \min \{ \mu_A(2), \mu_B(3) \} = 0.6$$

$$I(2,4) = 8 \text{ with } \min \{ \mu_A(2), \mu_B(4) \} = 1.0$$

$$I(2,5) = 12 \text{ with } \min \{ \mu_A(2), \mu_B(5) \} = 0.3$$

$$I(3,3) = 0 \text{ with } \min \{ \mu_A(3), \mu_B(3) \} = 0.6$$

$$I(3,4) = 4 \text{ with } \min \{ \mu_A(3), \mu_B(4) \} = 0.7$$

$$I(3,5) = 8 \text{ with } \min \{ \mu_A(3), \mu_B(5) \} = 0.3$$

Integration of Fuzzy Function

Integration of crispfunction in fuzzy interval

- consider the function $f(x) = 4$
- calculate the integration of f in $[A,B]$

where $A = \{(1, 0.5), (2, 1.0), (3, 0.7)\}$ and $B = \{(3, 0.6), (4, 1.0), (5, 0.3)\}$

$$I(1,3) = 8 \text{ with } \min \{ \mu_A(1), \mu_B(3) \} = 0.5$$

$$I(1,4) = 12 \text{ with } \min \{ \mu_A(1), \mu_B(4) \} = 0.5$$

$$I(1,5) = 20 \text{ with } \min \{ \mu_A(1), \mu_B(5) \} = 0.3$$

$$I(2,3) = 4 \text{ with } \min \{ \mu_A(2), \mu_B(3) \} = 0.6$$

$$I(2,4) = 8 \text{ with } \min \{ \mu_A(2), \mu_B(4) \} = 1.0$$

$$I(2,5) = 12 \text{ with } \min \{ \mu_A(2), \mu_B(5) \} = 0.3$$

$$I(3,3) = 0 \text{ with } \min \{ \mu_A(3), \mu_B(3) \} = 0.6$$

$$I(3,4) = 4 \text{ with } \min \{ \mu_A(3), \mu_B(4) \} = 0.7$$

$$I(3,5) = 8 \text{ with } \min \{ \mu_A(3), \mu_B(5) \} = 0.3$$

$$I(A,B) = \{(0,), (4,), (8,), (12,), (20,)\}$$

Integration of Fuzzy Function

Integration of crispfunction in fuzzy interval

- consider the function $f(x) = 4$
- calculate the integration of f in $[A,B]$
where $A = \{(1, 0.5), (2, 1.0), (3, 0.7)\}$ and $B = \{(3, 0.6), (4, 1.0), (5, 0.3)\}$

$$I(1,3) = 8 \text{ with } \min \{ \mu_A(1), \mu_B(3) \} = 0.5$$

$$I(1,4) = 12 \text{ with } \min \{ \mu_A(1), \mu_B(4) \} = 0.5$$

$$I(1,5) = 20 \text{ with } \min \{ \mu_A(1), \mu_B(5) \} = 0.3$$

$$I(2,3) = 4 \text{ with } \min \{ \mu_A(2), \mu_B(3) \} = 0.6$$

$$I(2,4) = 8 \text{ with } \min \{ \mu_A(2), \mu_B(4) \} = 1.0$$

$$I(2,5) = 12 \text{ with } \min \{ \mu_A(2), \mu_B(5) \} = 0.3$$

$$I(3,3) = 0 \text{ with } \min \{ \mu_A(3), \mu_B(3) \} = 0.6$$

$$I(3,4) = 4 \text{ with } \min \{ \mu_A(3), \mu_B(4) \} = 0.7$$

$$I(3,5) = 8 \text{ with } \min \{ \mu_A(3), \mu_B(5) \} = 0.3$$

$$I(A,B) = \{(0, 0.6), (4,), (8,), (12,), (20,)\}$$

Integration of Fuzzy Function

Integration of crispfunction in fuzzy interval

- consider the function $f(x) = 4$
- calculate the integration of f in $[A,B]$
where $A = \{(1, 0.5), (2, 1.0), (3, 0.7)\}$ and $B = \{(3, 0.6), (4, 1.0), (5, 0.3)\}$

$$I(1,3) = 8 \text{ with } \min \{ \mu_A(1), \mu_B(3) \} = 0.5$$

$$I(1,4) = 12 \text{ with } \min \{ \mu_A(1), \mu_B(4) \} = 0.5$$

$$I(1,5) = 20 \text{ with } \min \{ \mu_A(1), \mu_B(5) \} = 0.3$$

$$I(2,3) = 4 \text{ with } \min \{ \mu_A(2), \mu_B(3) \} = 0.6$$

$$I(2,4) = 8 \text{ with } \min \{ \mu_A(2), \mu_B(4) \} = 1.0$$

$$I(2,5) = 12 \text{ with } \min \{ \mu_A(2), \mu_B(5) \} = 0.3$$

$$I(3,3) = 0 \text{ with } \min \{ \mu_A(3), \mu_B(3) \} = 0.6$$

$$I(3,4) = 4 \text{ with } \min \{ \mu_A(3), \mu_B(4) \} = 0.7$$

$$I(3,5) = 8 \text{ with } \min \{ \mu_A(3), \mu_B(5) \} = 0.3$$

$$I(A,B) = \{(0, 0.6), (4, 0.7), (8,), (12,), (20,)\}$$

Integration of Fuzzy Function

Integration of crispfunction in fuzzy interval

- consider the function $f(x) = 4$
- calculate the integration of f in $[A,B]$

where $A = \{(1, 0.5), (2, 1.0), (3, 0.7)\}$ and $B = \{(3, 0.6), (4, 1.0), (5, 0.3)\}$

$$I(1,3) = 8 \text{ with } \min \{ \mu_A(1), \mu_B(3) \} = 0.5$$

$$I(1,4) = 12 \text{ with } \min \{ \mu_A(1), \mu_B(4) \} = 0.5$$

$$I(1,5) = 20 \text{ with } \min \{ \mu_A(1), \mu_B(5) \} = 0.3$$

$$I(2,3) = 4 \text{ with } \min \{ \mu_A(2), \mu_B(3) \} = 0.6$$

$$I(2,4) = 8 \text{ with } \min \{ \mu_A(2), \mu_B(4) \} = 1.0$$

$$I(2,5) = 12 \text{ with } \min \{ \mu_A(2), \mu_B(5) \} = 0.3$$

$$I(3,3) = 0 \text{ with } \min \{ \mu_A(3), \mu_B(3) \} = 0.6$$

$$I(3,4) = 4 \text{ with } \min \{ \mu_A(3), \mu_B(4) \} = 0.7$$

$$I(3,5) = 8 \text{ with } \min \{ \mu_A(3), \mu_B(5) \} = 0.3$$

$$I(A,B) = \{(0, 0.6), (4, 0.7), (8, 1.0), (12,), (20,)\}$$

Integration of Fuzzy Function

Integration of crispfunction in fuzzy interval

- consider the function $f(x) = 4$
- calculate the integration of f in $[A,B]$

where $A = \{(1, 0.5), (2, 1.0), (3, 0.7)\}$ and $B = \{(3, 0.6), (4, 1.0), (5, 0.3)\}$

$$I(1,3) = 8 \text{ with } \min \{ \mu_A(1), \mu_B(3) \} = 0.5$$

$$I(1,4) = 12 \text{ with } \min \{ \mu_A(1), \mu_B(4) \} = 0.5$$

$$I(1,5) = 20 \text{ with } \min \{ \mu_A(1), \mu_B(5) \} = 0.3$$

$$I(2,3) = 4 \text{ with } \min \{ \mu_A(2), \mu_B(3) \} = 0.6$$

$$I(2,4) = 8 \text{ with } \min \{ \mu_A(2), \mu_B(4) \} = 1.0$$

$$I(2,5) = 12 \text{ with } \min \{ \mu_A(2), \mu_B(5) \} = 0.3$$

$$I(3,3) = 0 \text{ with } \min \{ \mu_A(3), \mu_B(3) \} = 0.6$$

$$I(3,4) = 4 \text{ with } \min \{ \mu_A(3), \mu_B(4) \} = 0.7$$

$$I(3,5) = 8 \text{ with } \min \{ \mu_A(3), \mu_B(5) \} = 0.3$$

$$I(A,B) = \{(0, 0.6), (4, 0.7), (8, 1.0), (12, 0.5), (20,)\}$$

Integration of Fuzzy Function

Integration of crispfunction in fuzzy interval

- consider the function $f(x) = 4$
- calculate the integration of f in $[A,B]$

where $A = \{(1, 0.5), (2, 1.0), (3, 0.7)\}$ and $B = \{(3, 0.6), (4, 1.0), (5, 0.3)\}$

$$I(1,3) = 8 \text{ with } \min \{ \mu_A(1), \mu_B(3) \} = 0.5$$

$$I(1,4) = 12 \text{ with } \min \{ \mu_A(1), \mu_B(4) \} = 0.5$$

$$I(1,5) = 20 \text{ with } \min \{ \mu_A(1), \mu_B(5) \} = 0.3$$

$$I(2,3) = 4 \text{ with } \min \{ \mu_A(2), \mu_B(3) \} = 0.6$$

$$I(2,4) = 8 \text{ with } \min \{ \mu_A(2), \mu_B(4) \} = 1.0$$

$$I(2,5) = 12 \text{ with } \min \{ \mu_A(2), \mu_B(5) \} = 0.3$$

$$I(3,3) = 0 \text{ with } \min \{ \mu_A(3), \mu_B(3) \} = 0.6$$

$$I(3,4) = 4 \text{ with } \min \{ \mu_A(3), \mu_B(4) \} = 0.7$$

$$I(3,5) = 8 \text{ with } \min \{ \mu_A(3), \mu_B(5) \} = 0.3$$

$$I(A,B) = \{(0, 0.6), (4, 0.7), (8, 1.0), (12, 0.5), (20, 0.3)\}$$

Differentiation of Fuzzy Function

Differentiation of fuzzifying function on crisp point

Differentiation of Fuzzy Function

Differentiation of fuzzifying function on crisp point

- consider the fuzzy bunch of function $F = \{(f_1, 0.6), (f_2, 0.9), (f_3, 0.5)\}$
where $f_1(x) = 4x$, $f_2(x) = x^2$, $f_3(x) = x - 1$

Differentiation of Fuzzy Function

Differentiation of fuzzifying function on crisp point

- consider the fuzzy bunch of function $F = \{(f_1, 0.6), (f_2, 0.9), (f_3, 0.5)\}$
where $f_1(x) = 4x$, $f_2(x) = x^2$, $f_3(x) = x - 1$
- calculate the differentiation of F on $x_0 = 2$

Differentiation of Fuzzy Function

Differentiation of fuzzifying function on crisp point

- consider the fuzzy bunch of function $F = \{(f_1, 0.6), (f_2, 0.9), (f_3, 0.5)\}$
where $f_1(x) = 4x$, $f_2(x) = x^2$, $f_3(x) = x - 1$
- calculate the differentiation of F on $x_0 = 2$

$$f_1'(x) = 4, f_2'(x) = 2x, f_3'(x) = 1$$

Differentiation of Fuzzy Function

Differentiation of fuzzifying function on crisp point

- consider the fuzzy bunch of function $F = \{(f_1, 0.6), (f_2, 0.9), (f_3, 0.5)\}$ where $f_1(x) = 4x$, $f_2(x) = x^2$, $f_3(x) = x - 1$
- calculate the differentiation of F on $x_0 = 2$

$$f_1'(x) = 4, f_2'(x) = 2x, f_3'(x) = 1$$

$$F'(2) = \{(4, 0.6), (4, 0.9), (1, 0.5)\}$$

Differentiation of Fuzzy Function

Differentiation of fuzzifying function on crisp point

- consider the fuzzy bunch of function $F = \{(f_1, 0.6), (f_2, 0.9), (f_3, 0.5)\}$ where $f_1(x) = 4x$, $f_2(x) = x^2$, $f_3(x) = x - 1$
- calculate the differentiation of F on $x_0 = 2$

$$f_1'(x) = 4, f_2'(x) = 2x, f_3'(x) = 1$$

$$F'(2) = \{(4, 0.6), (4, 0.9), (1, 0.5)\}$$

$$F'(2) = \{(4, 0.9), (1, 0.5)\}$$

Differentiation of Fuzzy Function

Differentiation of crisp function on fuzzy point

Differentiation of Fuzzy Function

Differentiation of crisp function on fuzzy point

- consider the function $f(x) = 3x^3$

Differentiation of Fuzzy Function

Differentiation of crisp function on fuzzy point

- consider the function $f(x) = 3x^3$
- calculate differentiation of f at A
where $A = \{(-2, 0.5), (0, 1.0), (2, 0.7)\}$

Differentiation of Fuzzy Function

Differentiation of crisp function on fuzzy point

- consider the function $f(x) = 3x^3$
- calculate differentiation of f at A
where $A = \{(-2, 0.5), (0, 1.0), (2, 0.7)\}$

$$f'(x) = 9x^2$$

Differentiation of Fuzzy Function

Differentiation of crisp function on fuzzy point

- consider the function $f(x) = 3x^3$
- calculate differentiation of f at A
where $A = \{(-2, 0.5), (0, 1.0), (2, 0.7)\}$

$$f'(x) = 9x^2$$

$$f'(A) = \{(36, 0.5), (0, 1.0), (36, 0.7)\}$$

Differentiation of Fuzzy Function

Differentiation of crisp function on fuzzy point

- consider the function $f(x) = 3x^3$
- calculate differentiation of f at A
where $A = \{(-2, 0.5), (0, 1.0), (2, 0.7)\}$

$$f'(x) = 9x^2$$

$$f'(A) = \{(36, 0.5), (0, 1.0), (36, 0.7)\}$$

$$f'(A) = \{(0, 1.0), (36, 0.7)\}$$