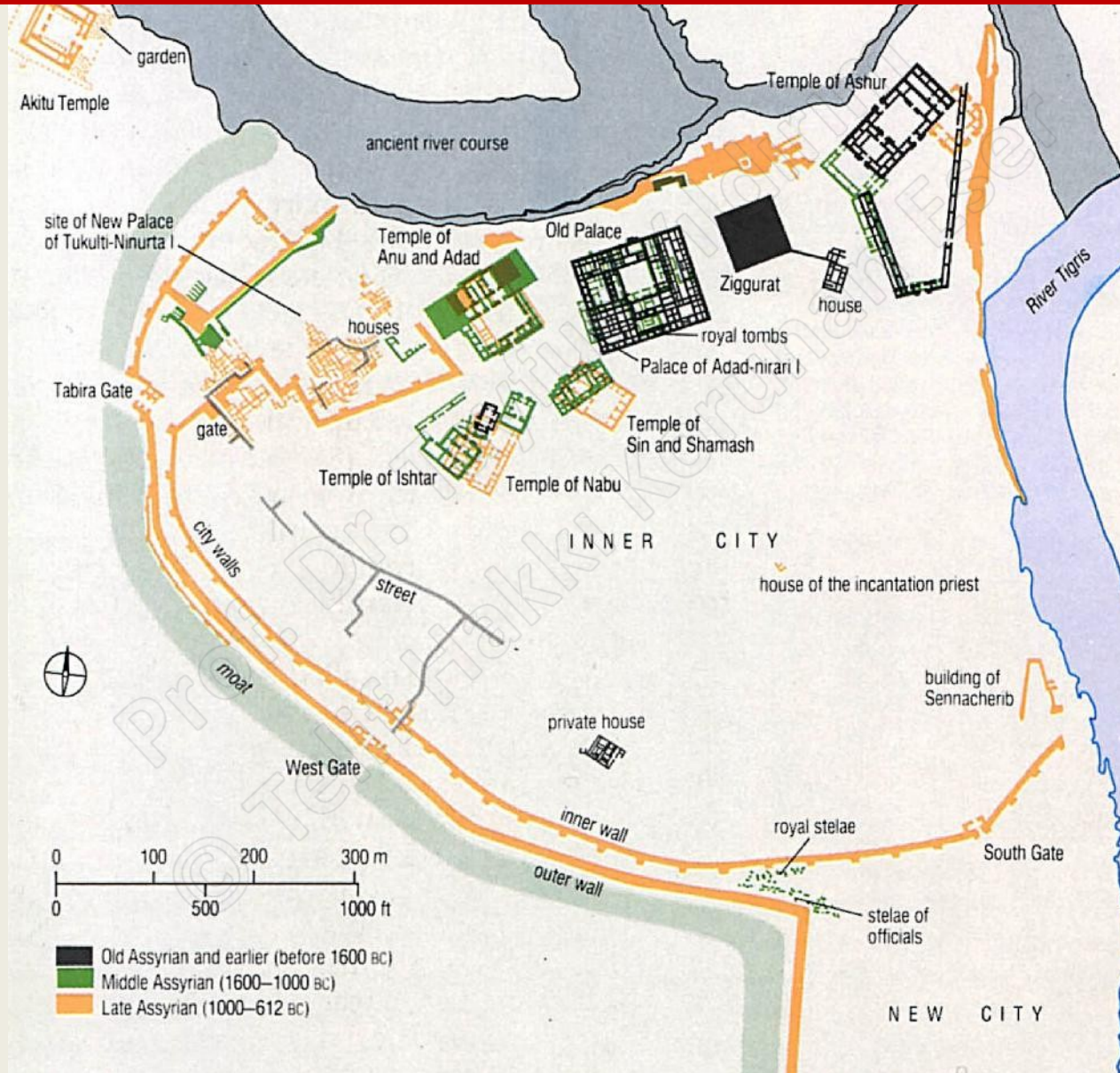


# PRT 224 Babil – Asur Arkeolojisi

## 14. Orta Asur Mimarisi ve Küçük Eserler



# I. Adad Nirari Sarayı, Asur

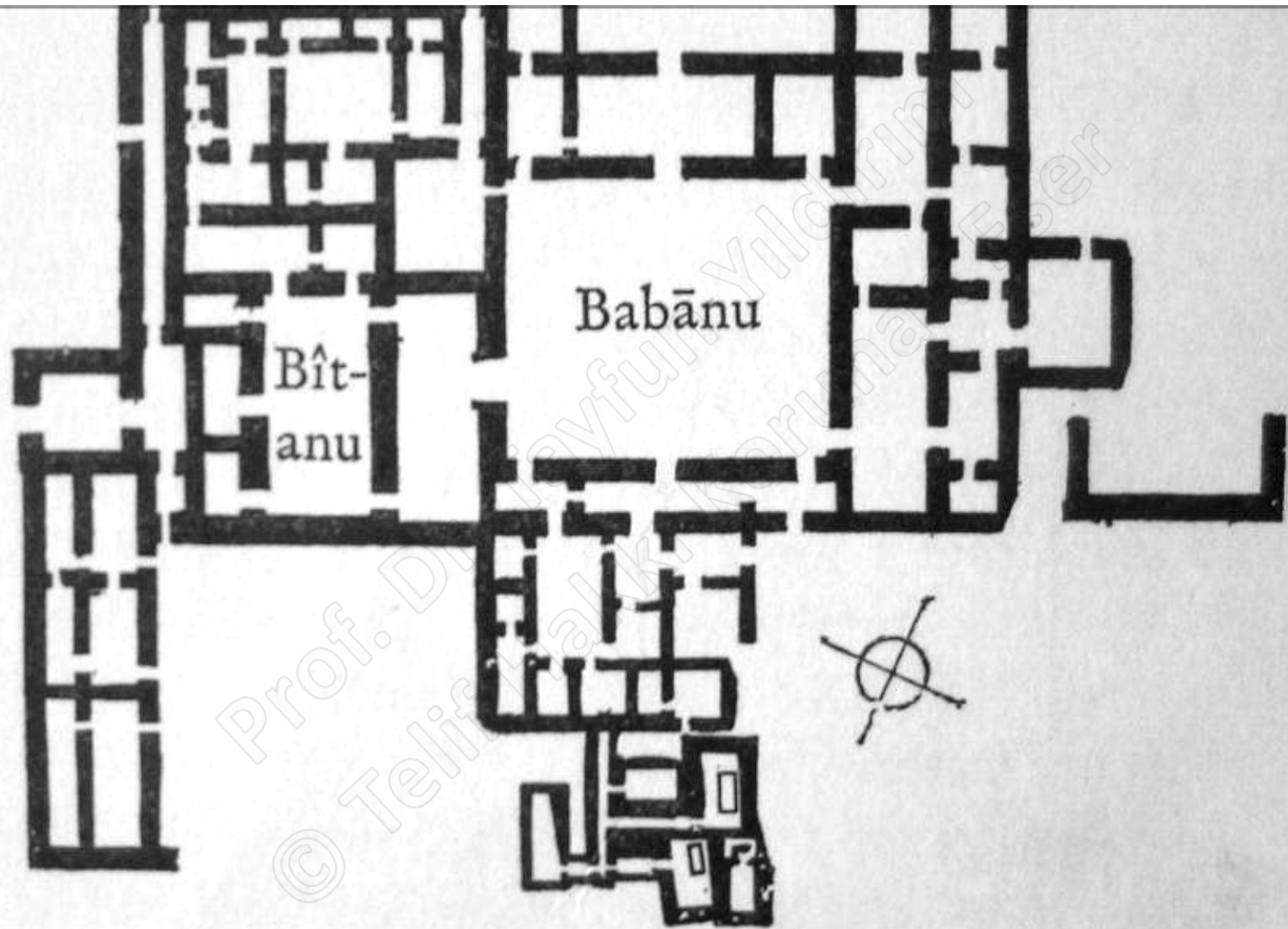


Fig. 75 Plan of the Palace of Adad-nirari I at Ashur  
(After: WVDOG 66, Pl. 4)

# Sin – Şamaş Mabedi, Asur

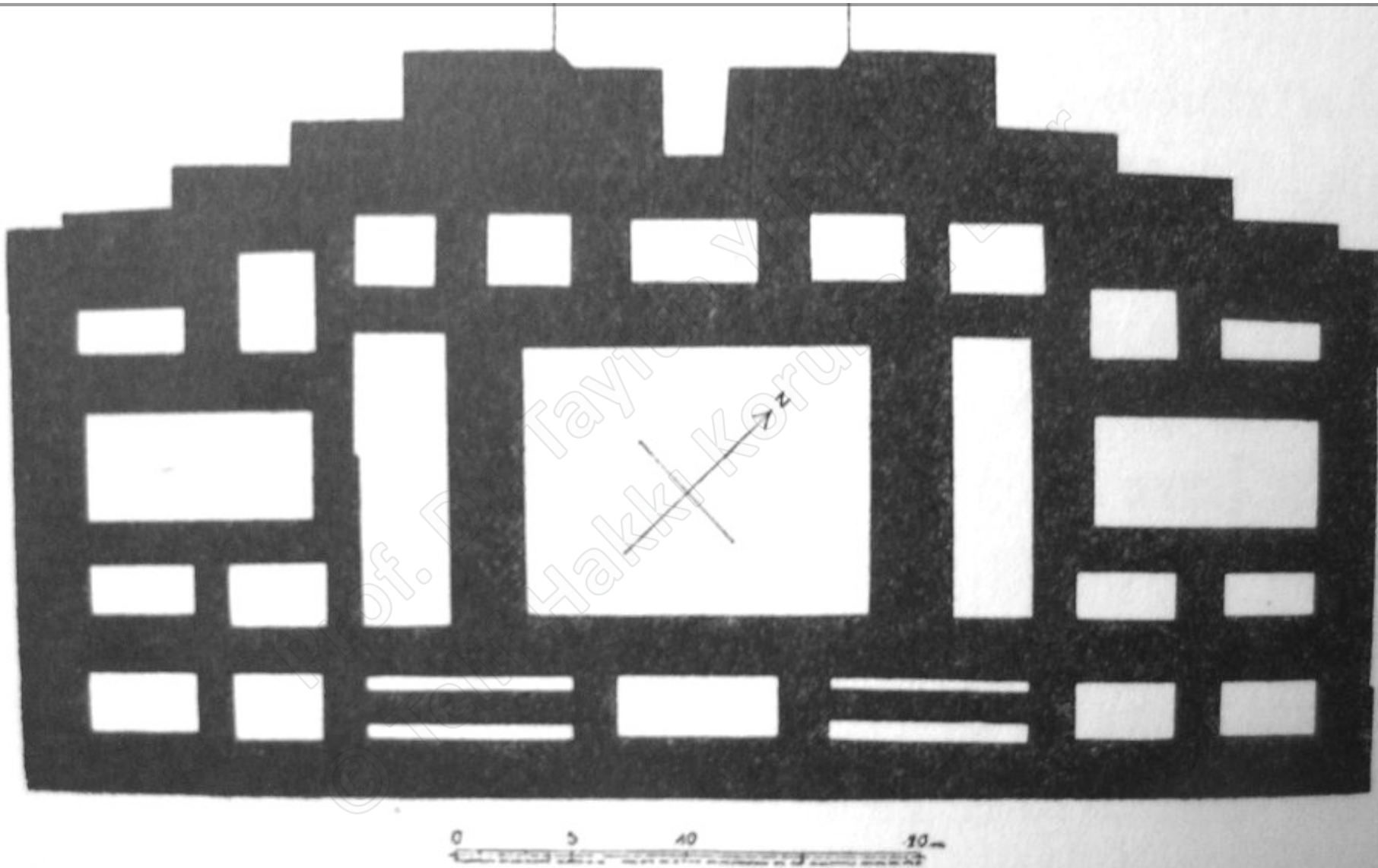


Fig. 73 Plan of the first Sin-Shamash temple of Ashur-nirari I



# İştar Mabedi, Asur

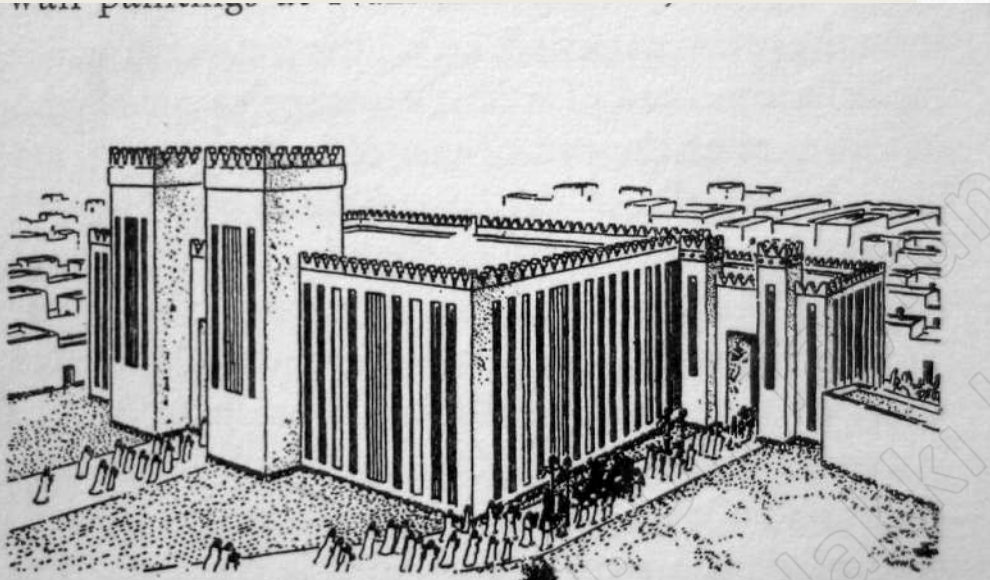


Fig. 88 Reconstruction of the Ishtar Temple of Tukulti-Ninurta I at Ashur, as seen from the north  
(After: W. Andrae, *Das wiedererstandene Assur*, p. 110, Fig. 48)

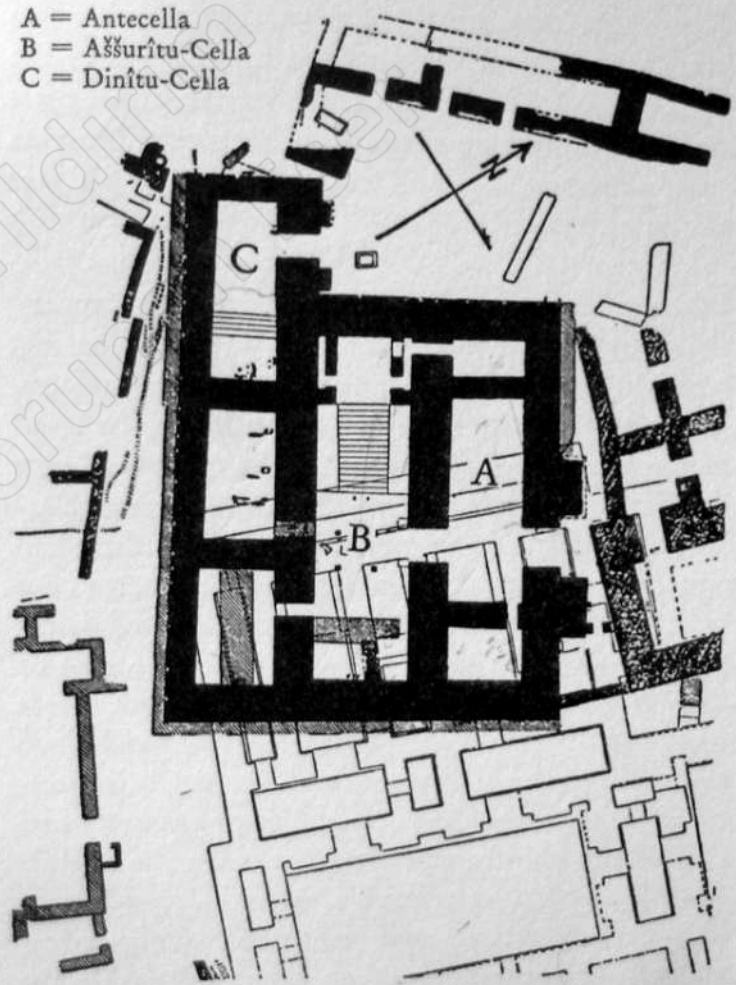
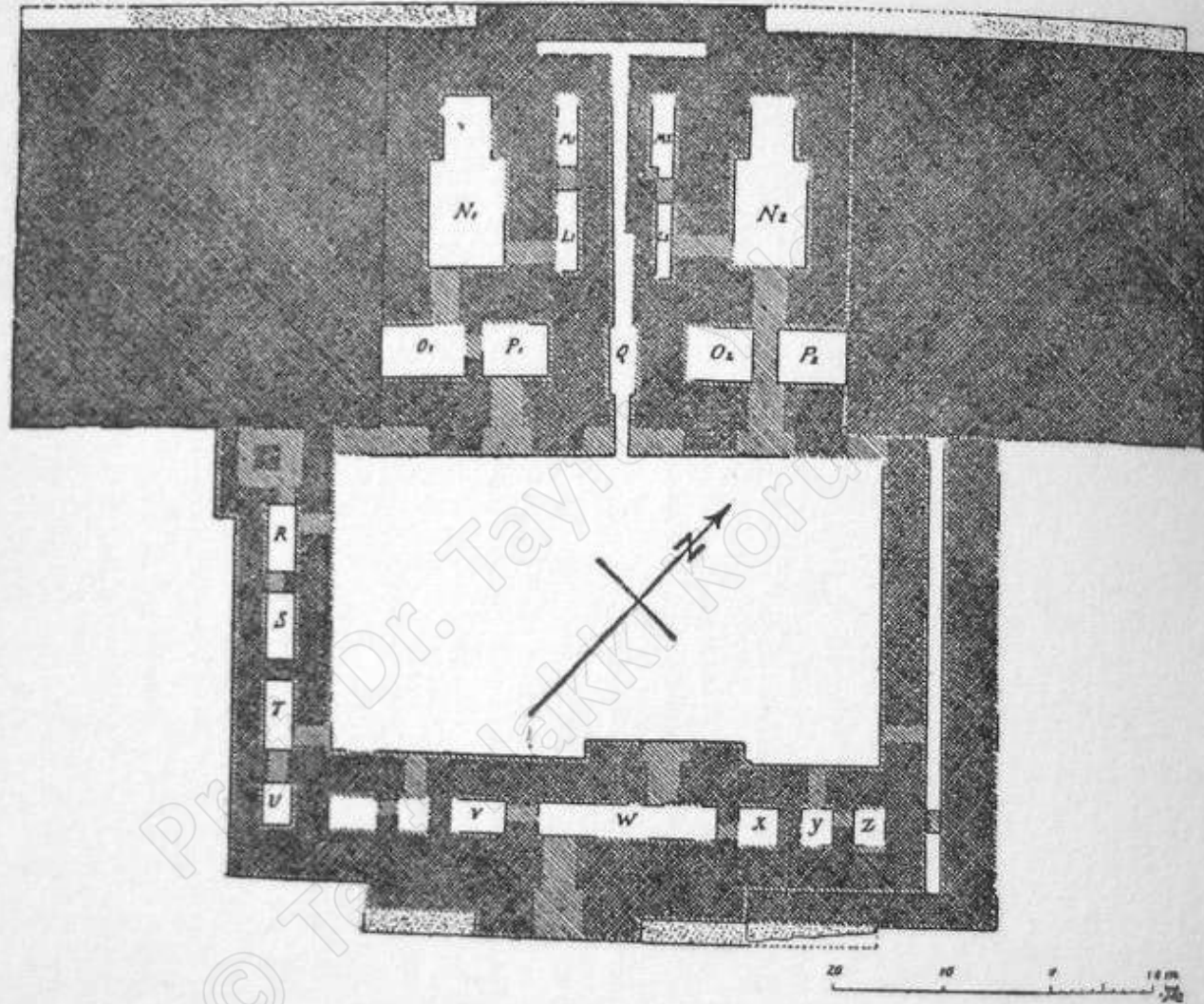


Fig. 87 Plan of the Ishtar Temple (Ashuritu and Dinitu) of Tukulti-Ninurta I at Ashur  
(After: W. Andrae, *Das wiedererstandene Assur*, p. 109, Fig. 47)

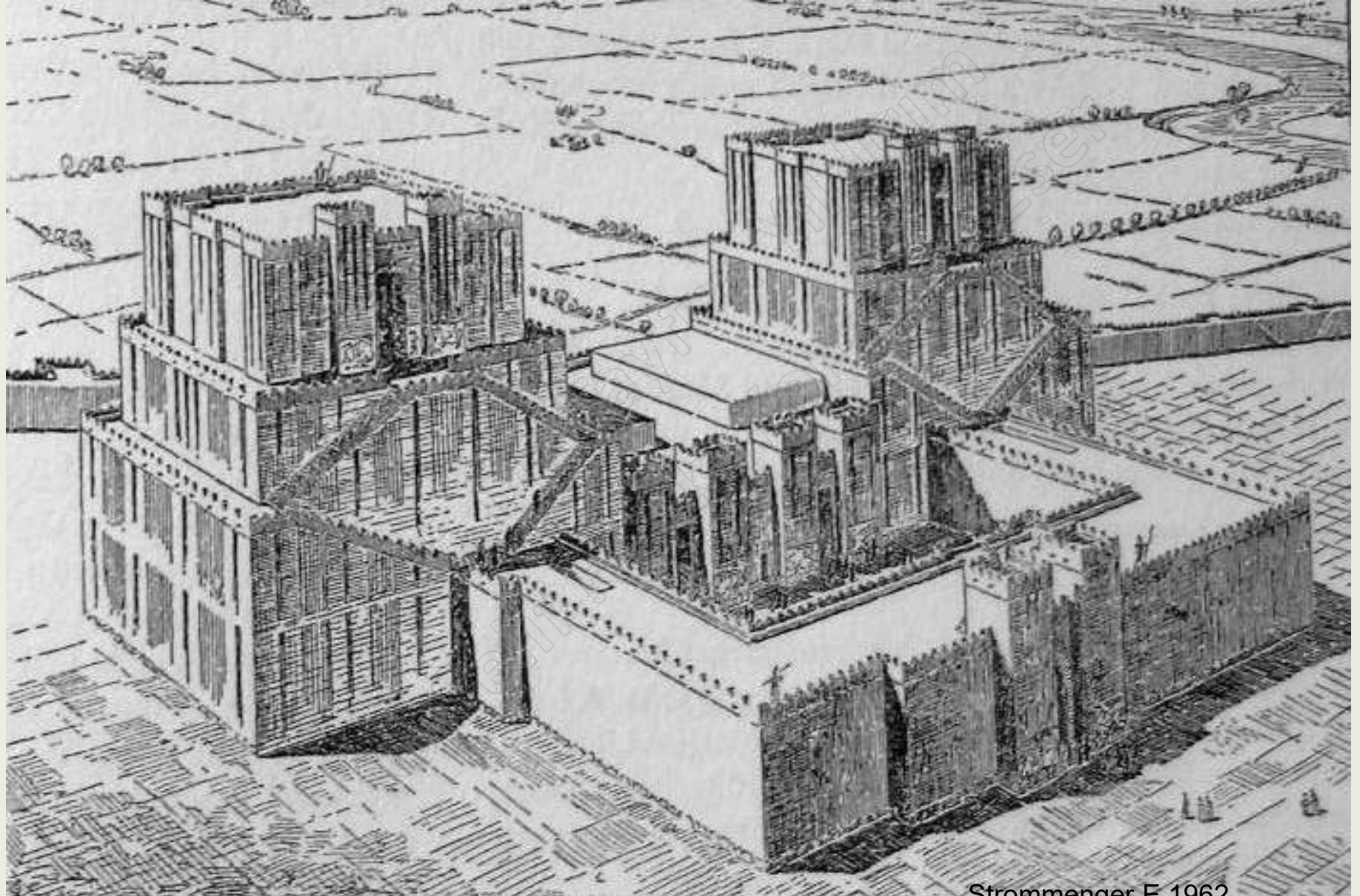
# Anu – Adad Mabedi, Asur



49 Assur. Doppeltempel für Anu und Adad. Grundriß (vgl. Abb. 48). – Nach *W. Andrae*, 1938



# İřtar Mabedi, Asur



Strommenger, E, 1962

# Kar-Tukulti-Ninurta

Fig. 3: Mound A: simplified sketch of the "Southern Palace"  
Source: Eickhoff 1985: Pl. 4

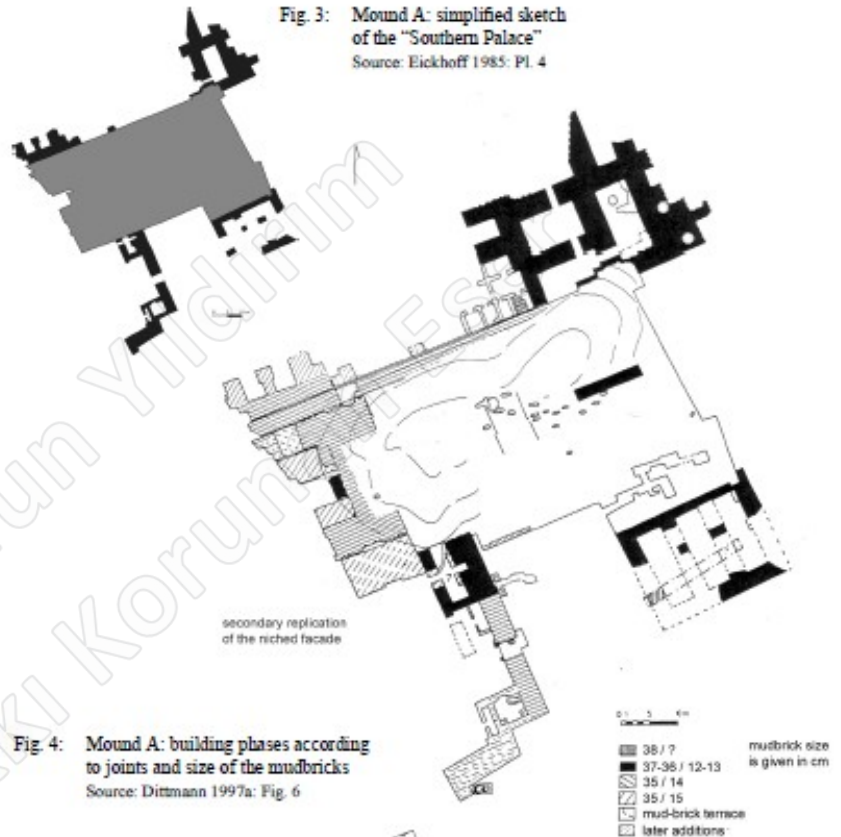


Fig. 4: Mound A: building phases according to joints and size of the mudbricks  
Source: Dittmann 1997: Fig. 6

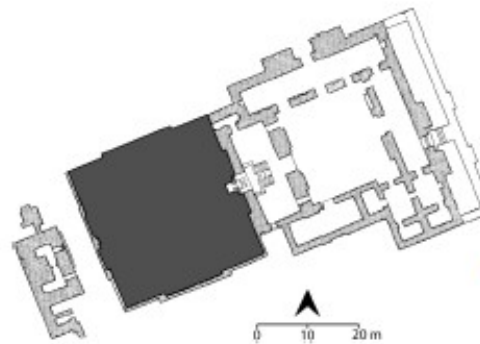
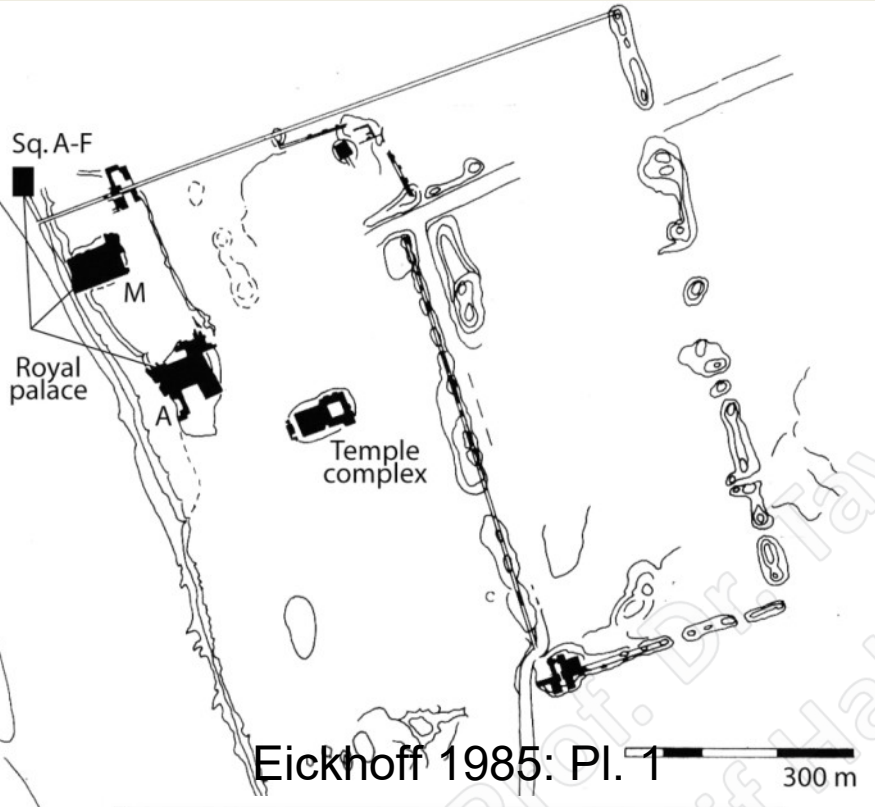
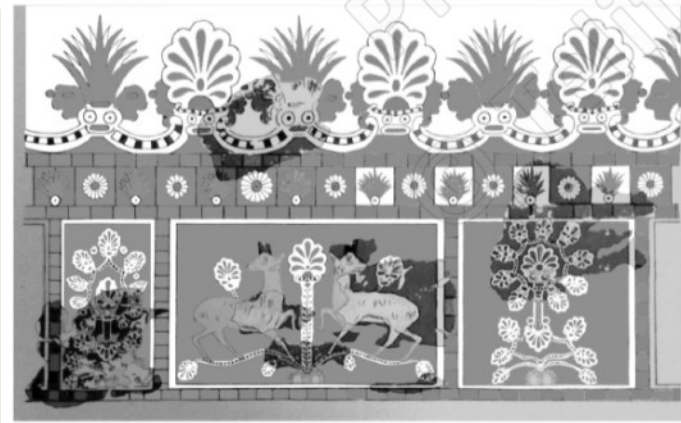


Fig. 5: Ziqqurat and temple of Aššur in Kar Tukulti-Ninurta  
Source: Drawing by F. Nigro in Matthiae 1997: 24



Eickhoff 1985: Pl. 1





# Asur Mabedi / Kar-Tukulti-Ninurta

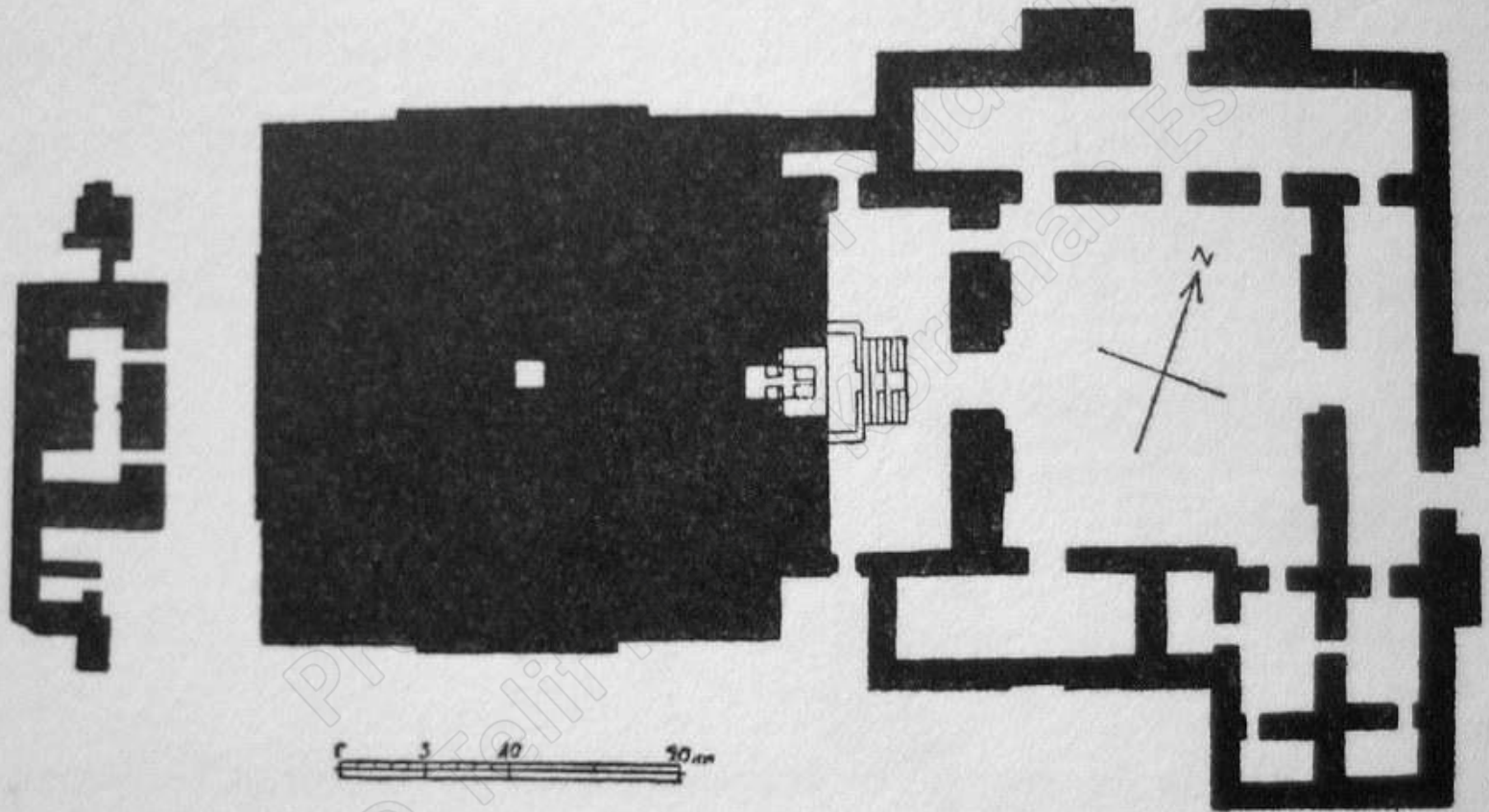
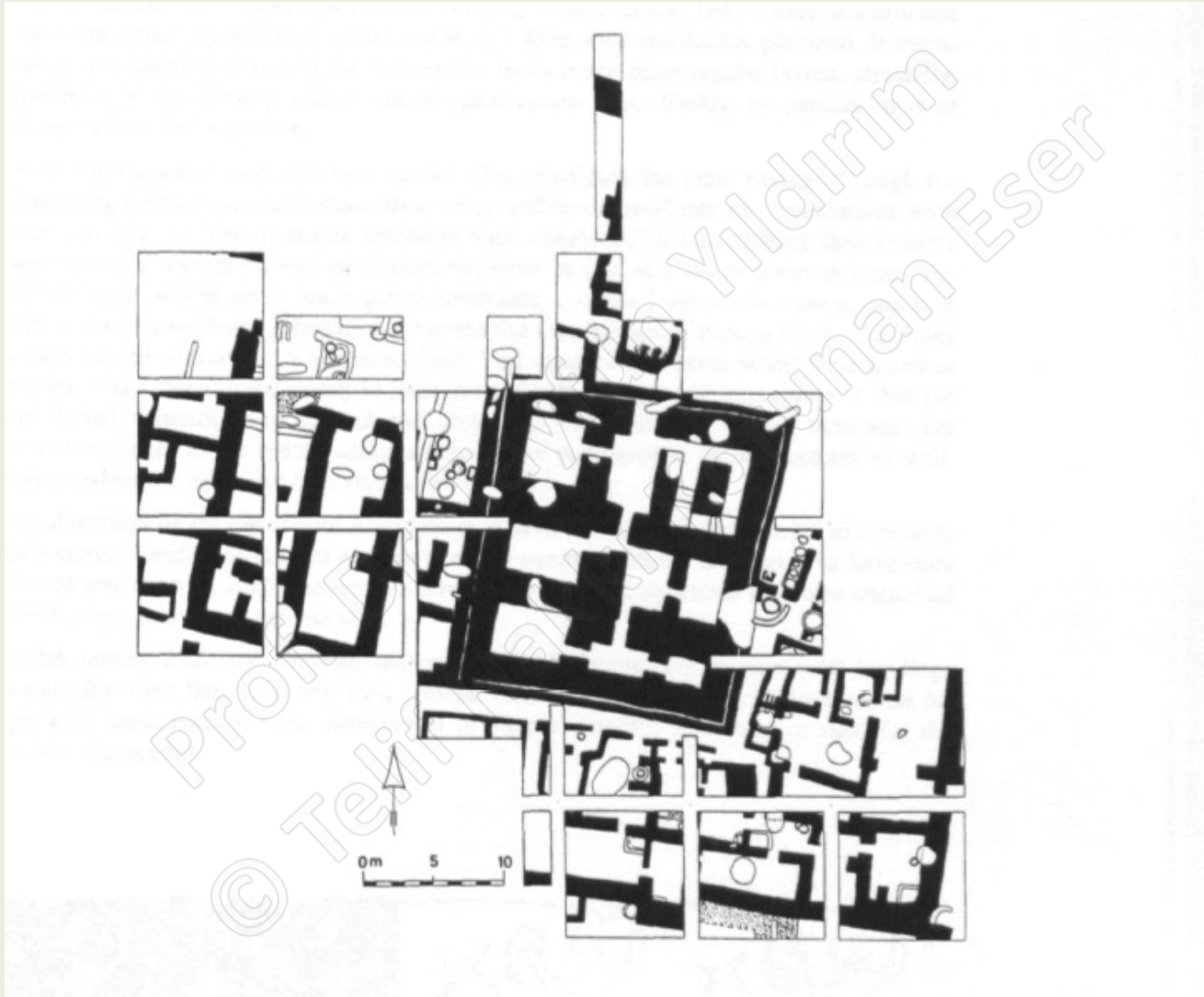


Fig. 86 Plan of the Ashur Temple of Tukulti-Ninurta I at Kar-Tukulti-Ninurta

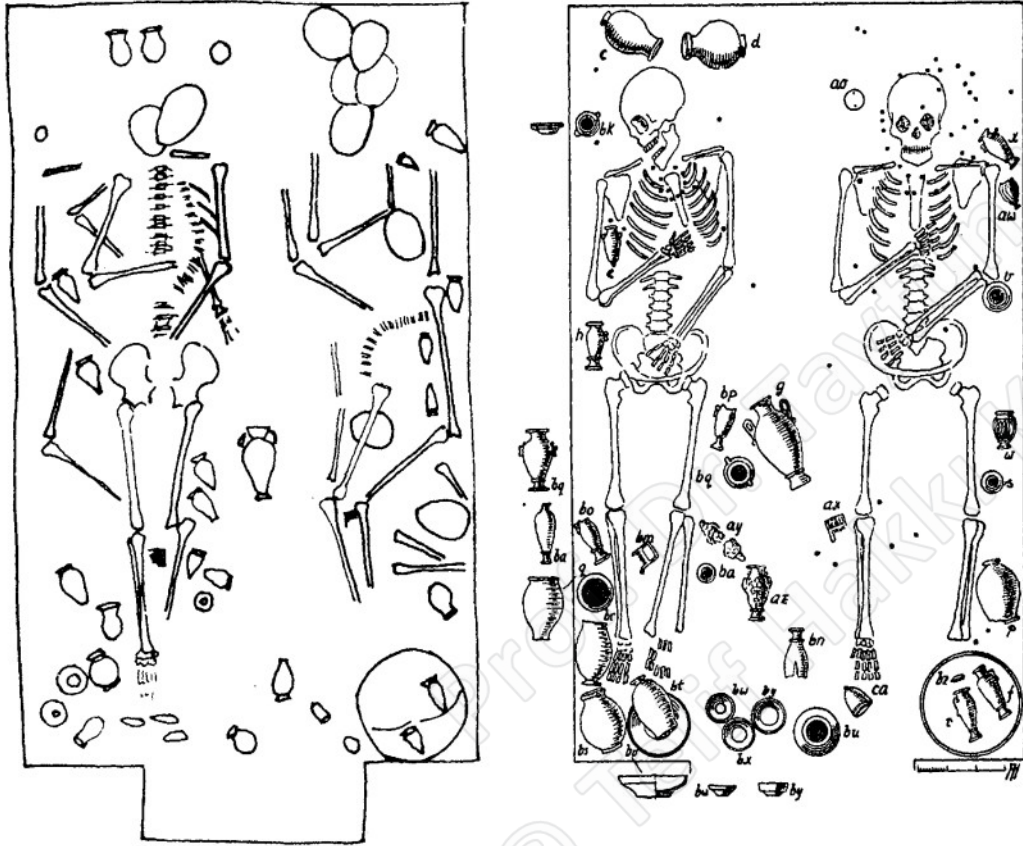
(After: W. Andrae, *Das wiedererstandene Assur*, p. 92, Fig. 42)



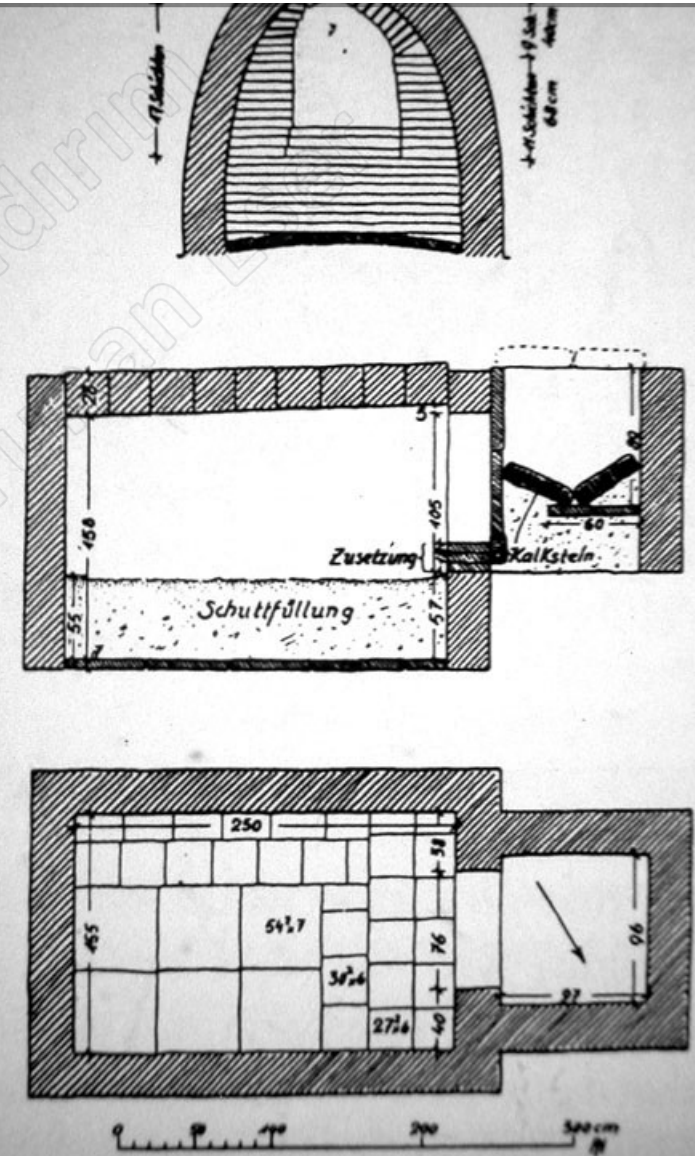
# Tell Sabi Abyad, Orta Asur Yerleşimi



# Asur, 45 no'lu mezar



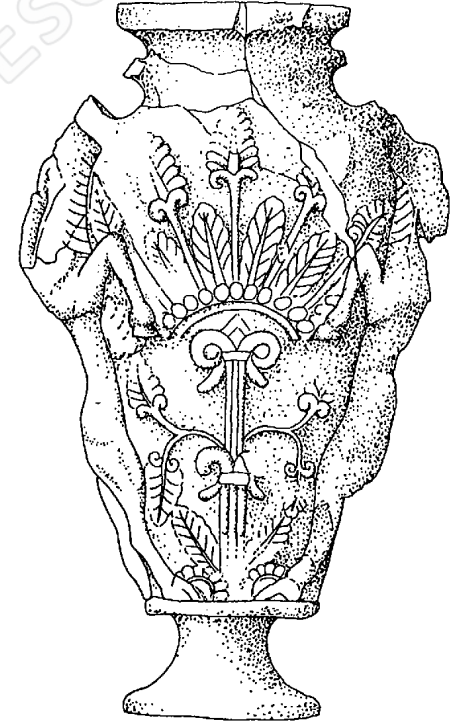
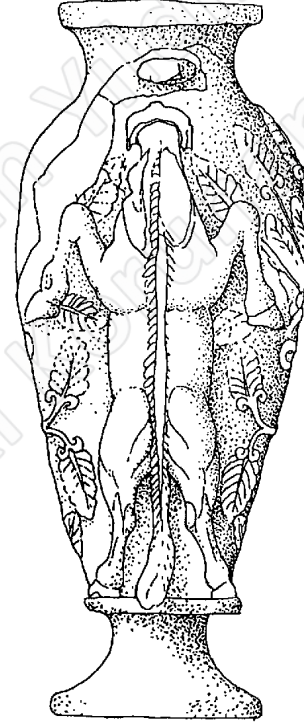
Harper, P.O. ve diğ. 1995, fig. 19



Haller, 1954, fig. 158



# Asur, 45 no'lu mezar



Harper, P.O. ve diğ. 1995, fig.22

# Asur, 45 no'lu mezar

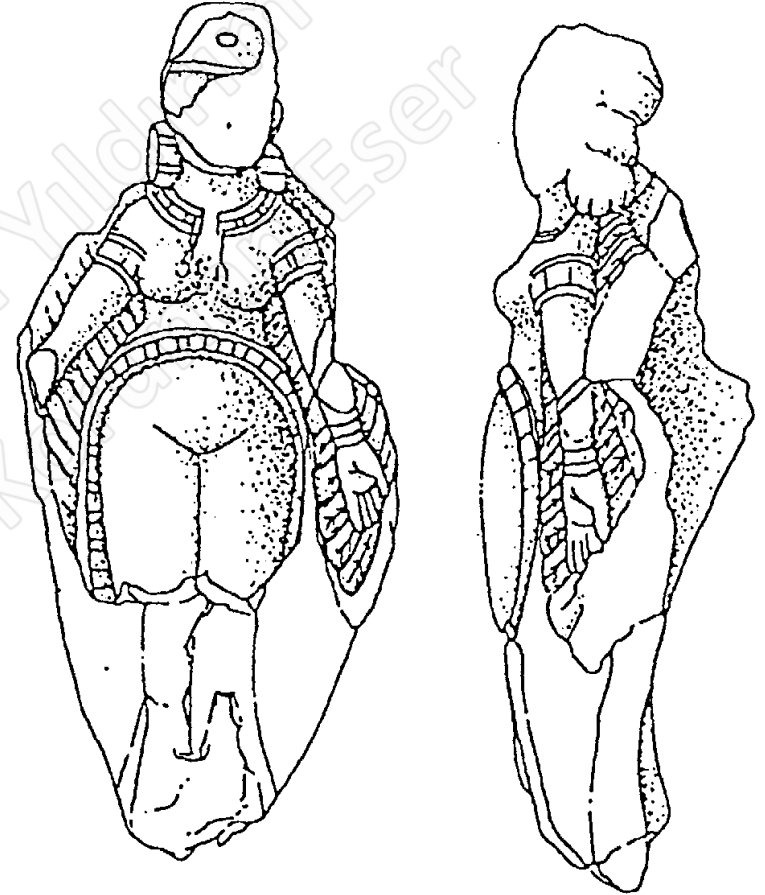


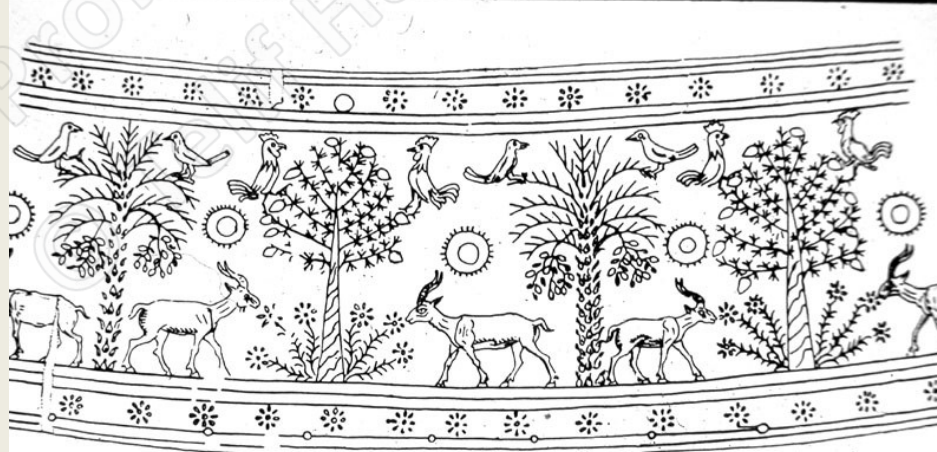
Fig. 23. Drawing of relief decoration on cat. no. 52. Drawn by C. Gully



# Asur, 45 no'lu mezar



# Asur, 45 no'lu mezar





# Asur, 45 no'lu mezar

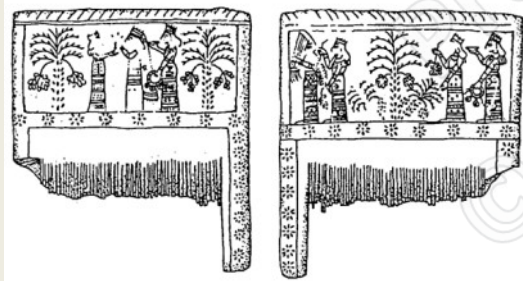
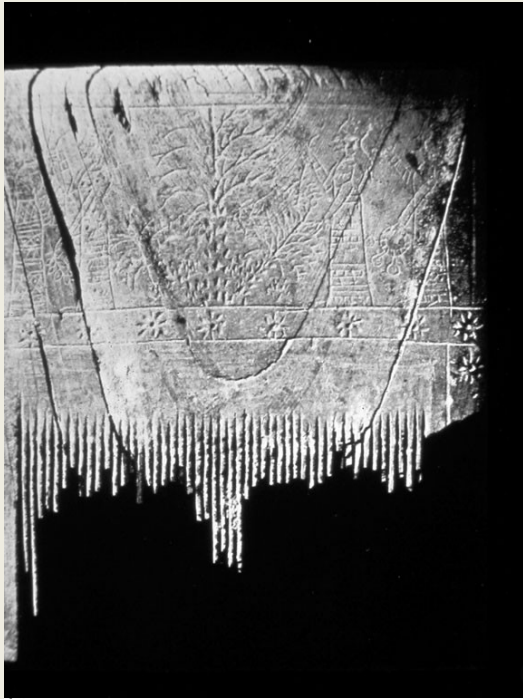


Fig. 21. Drawing of the front (at left) and the back (at right) of cat. no. 46. Drawn by C. Gully



Fig. 24. Andrae's inventory-book sketches of jewelry elements from Tomb 45, now missing. Courtesy of the Vorderasiatisches Museum

# Asur, 45 no'lu mezar





# Asur, 45 no'lu mezar



# Asur





# Asur, İřtar Mabedi, I.Tukulti-Ninurta





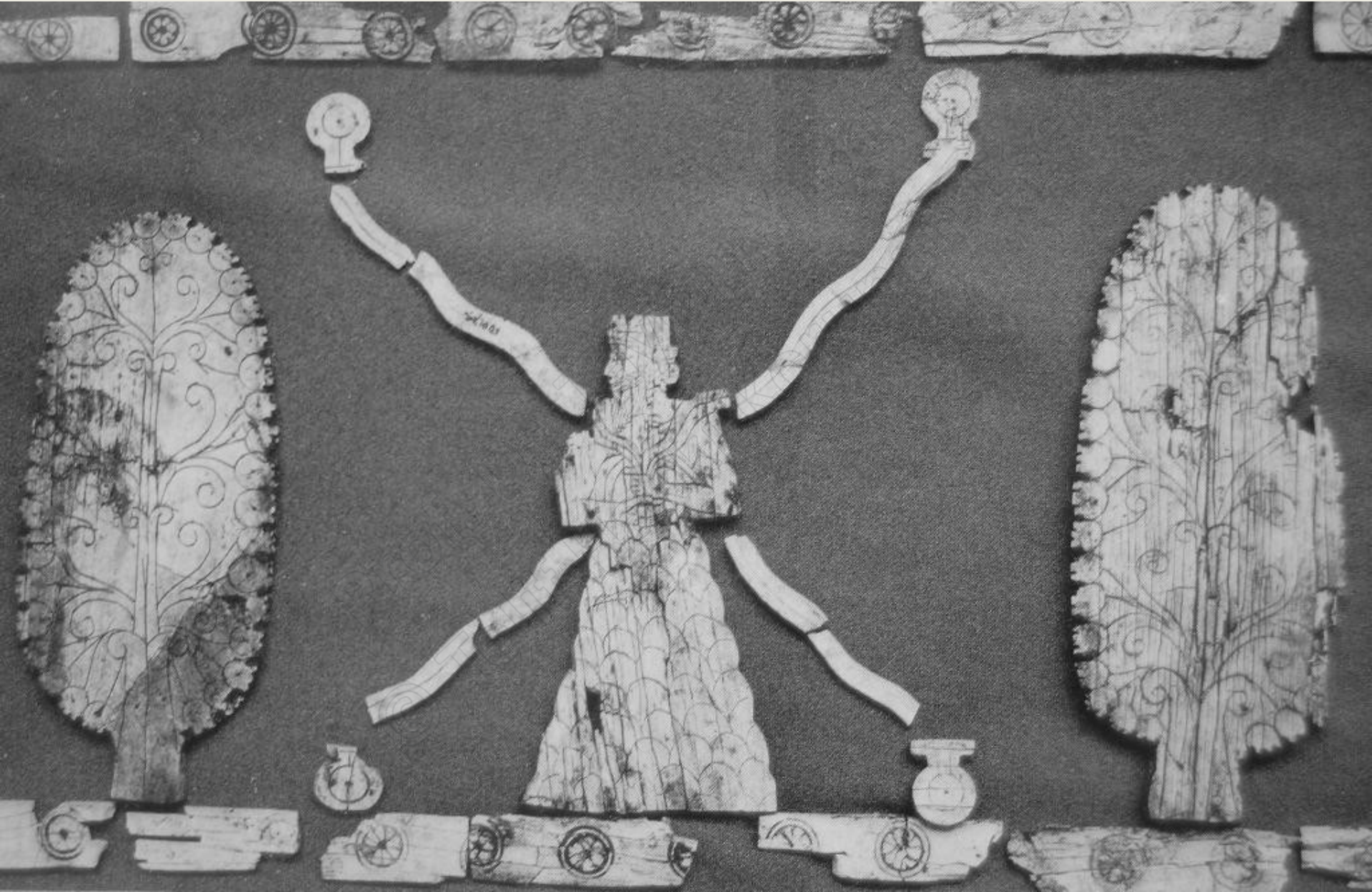
# Asur, İřtar Mabedi, I.Tukulti-Ninurta





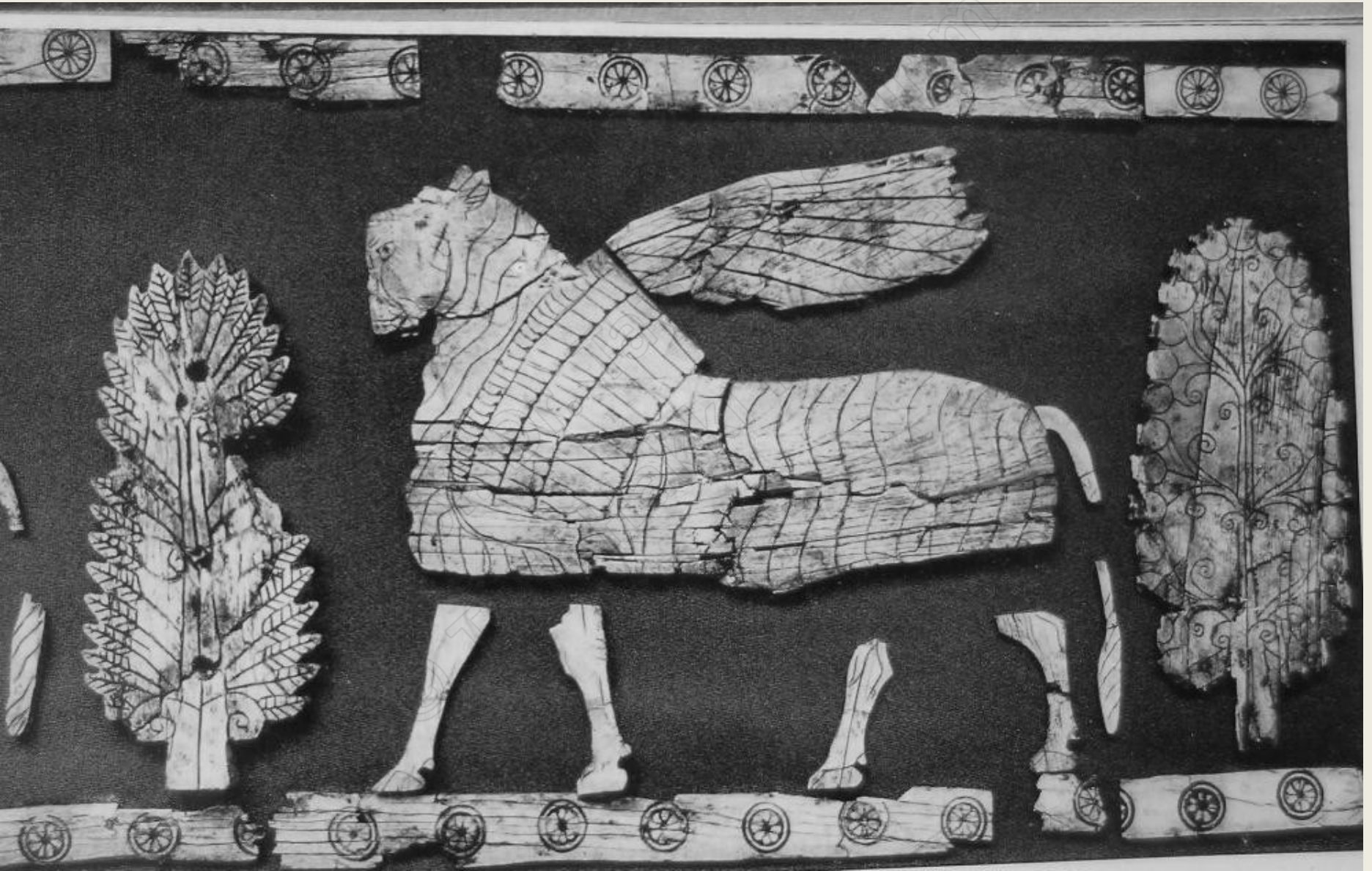


# Kar-Tukulti-Ninurta



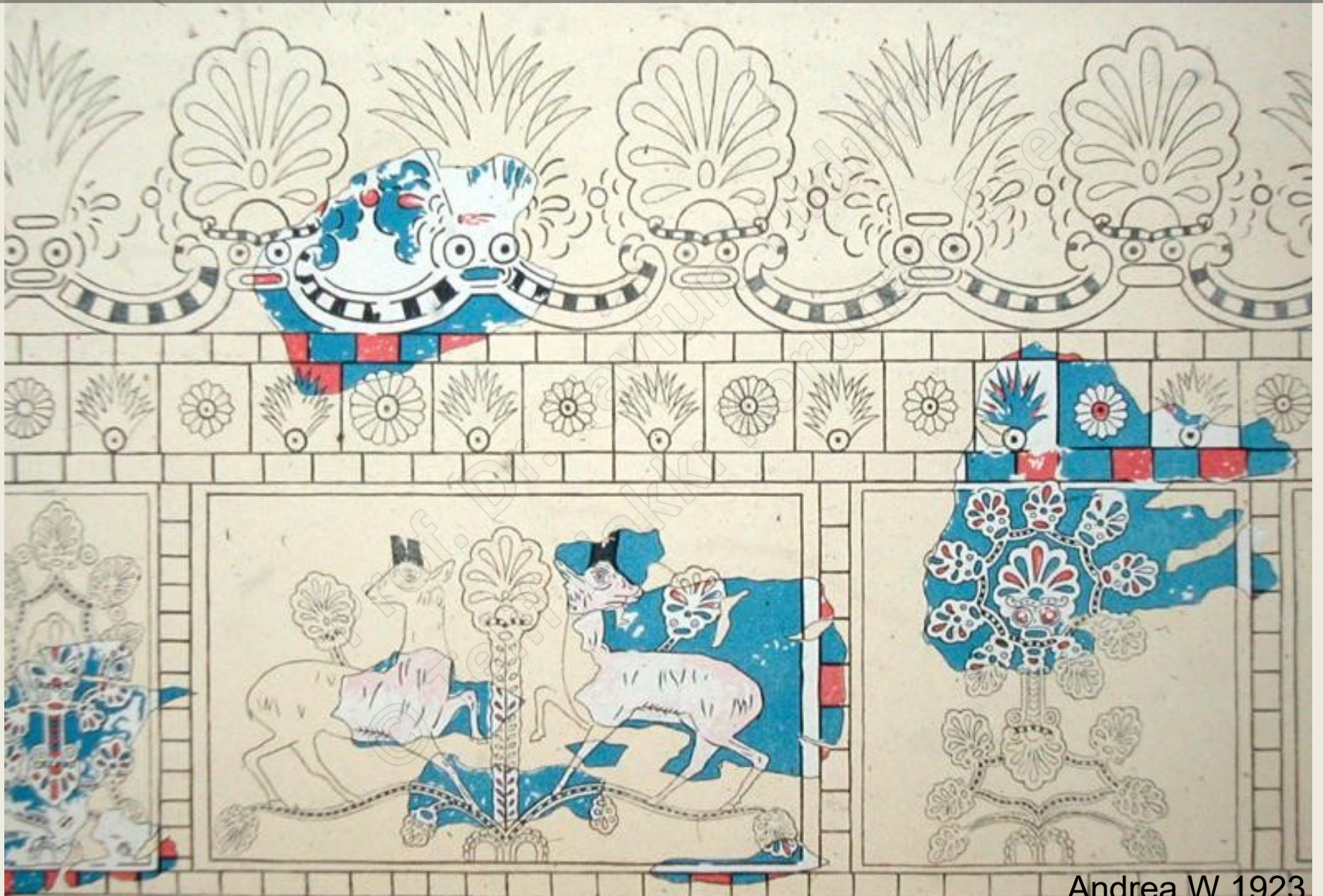


# Kar-Tukulti-Ninurta

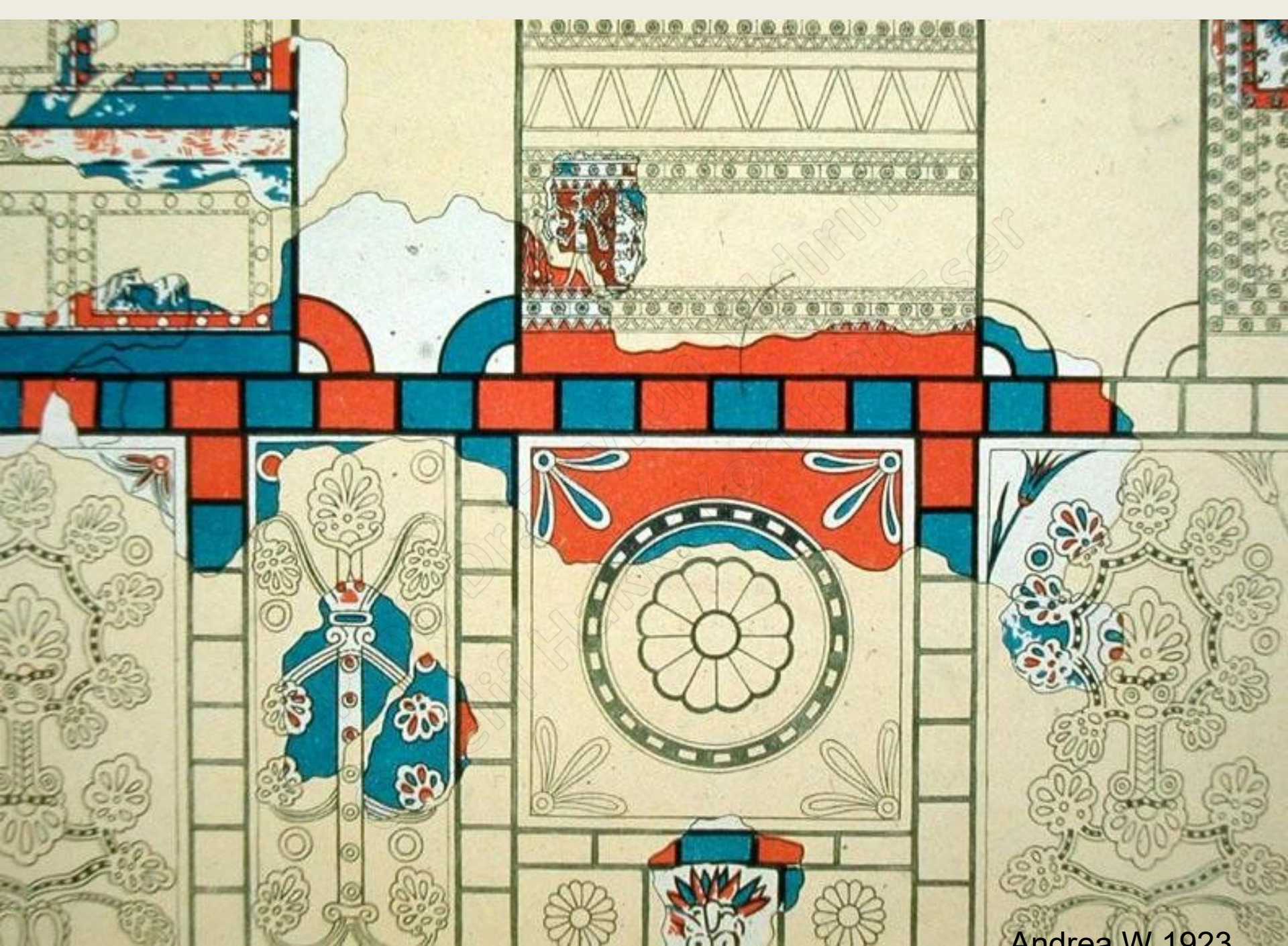




# Kar-Tukulti-Ninurta







Andrea, W. 1923







# Orta Asur Mühür ve Mühür baskıları



9.12.  
(a sinistra, in alto)  
Sigillo con cavallo  
alato, provenienza  
ignota, medio-assiro,  
1300-1200 a.e.v.  
circa. Calcedonio,  
h 3,6 cm.

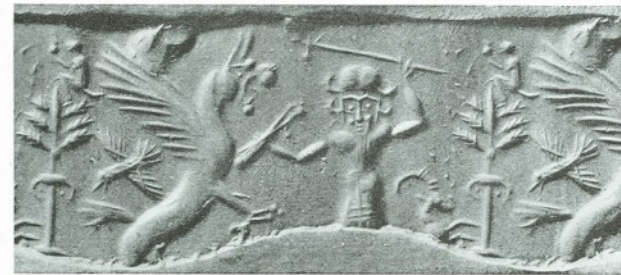


9.13.  
(a sinistra, in basso)  
Sigillo con cervo  
che salta in  
un paesaggio,  
provenienza ignota,  
medio-assiro,  
1300-1200 a.e.v.  
Calcedonio latteo,  
h 3 cm.



9.14.  
Contratto recante  
il sigillo di Eriba-  
Adad I, da Assur,  
medio-assiro, 1390-  
1364 a.e.v. circa.  
Argilla, h 4,4 cm.





186/187 Mittelassyrische Rollsiegel in Abrollungen. 186: 14.-13. Jahrhundert v. Chr., 187: 13.-11. Jahrhundert v. Chr.  
Sämtliche  $\frac{1}{4}$  natürliche Größe. Aus den Museen von London und New York



<u>TABLE I</u>		<u>ASSYRIA</u>	<u>BABYLONIA</u>		<u>ELSEWHERE</u>
			79. Agum II (Agum-kakrime)	c. 1570	Marshili I
61.	Puzur-Ashur III		711. Burna-Buriash I	c. 1510	
			712. Kashtiliashu III	c. 1490	Ea-gamil
			713. Agum III	c. 1465	Thutmosis III Amenophis II
69.	Ashur-bel-nisheshu	1419-1411	715. Kara-indash	c. 1415	
			717. Kurigalsu I	c. 1390	
			718. Kadashman-Enlil I	c. 1370	Amenophis III
			719. Burna-Buriash II	c. 1350	Akhnaton Tutankhamon
73.	Ashur-uballit I	1385-1350	720. Kara-hardash		
			721. Nazi-Bugash		
			722. Kurigalsu II	c. 1335	Hurpatis
74.	Enlil-nirari	1329-1320	723. Nazi-Maruttash	c. 1310	
75.	Arik-den-ili	1319-1308			
76.	Adad-nirari I	1307-1275	24. Kadashman-Turgu	c. 1290	Urhi-Teshub
			25. Kadashman-Enlil II	c. 1275	Hattushili III
77.	Shalmaneser I	1274-1245	27. Shagarakti-Shuriash	c. 1245	
			28. Kashtiliashu IV	c. 1230	
78.	Tukulti-Ninurta I	1244-1208	29. Enlil-nadin-shumi	c. 1228	
			30. Kadashman-Harbe II	c. 1225	Kidin-Hurritash
			31. Adad-shuma-iddina	c. 1222	
			32. Adad-shuma-usur	c. 1200	
79.	Ashur-nadin-apli	1207-1204			
80.	Ashur-nirari III	1203-1198	33. Meli-Shipak	c. 1178	
81.	Enlil-kudurri-usur	1197-1193	34. Marduk-apla-iddina I	c. 1165	
82.	Ninurta-apil-Ekur	1192-1180	35. Zababa-shuma-iddina	c. 1157	Shutruk-Nahhunte
83.	Ashur-dan I	1179-1134	36. Enlil-nadin-ahi	c. 1155	Kudur-Nahhunte
The Kassite Dynasty:		the pre-Babylon years . . . . .			1740-1595
		formative years (unification of lower Mesopotamia). . . . .			1595-1460
		the Kassites as an international power, I: Egyptian phase . . . .			1460-1340
				II: Assyrian-Hittite phase	1340-1230
				III: Assyrian-Elamite phase	1230-1155

MUZI  
 SHUPPI-LULIUMA I  
 ABILAMU  
 LURISTAN BRONZES