

Batı Anadolu ve Marmara Bölgesi Neolitik Kültürü



İzmir Bölgesi Ulucak

Ulucak Höyük, İzmir'in 25 km doğusunda İzmir-Ankara karayolunun 200 m kuzeyinde yer almaktadır. 1995 yılından itibaren Prof. Dr. Altan Çilingiroğlu'nun bilimsel danışmanlığında İzmir Müzesi ile birlikte gerçekleştirilen Ulucak Höyük kazısı, Ege Bölgesi'nin neolitikleşme süreci hakkında bilgi veren en önemli yerleşim yerlerinden biridir. 2009 yılından başlayarak höyükteki kazılara Doç. Dr. Özlem Cevik başkanlık etmektedir. Höyüğün genel stratigrafisi

O Gec Roma - Erken Bizans Donemi

I Orta-Gec Tunc Çağı

II a-b Erken Tunc Çağı

III Orta Kalkolitik Çağ

IV a - IV k Gec Neolitik - Erken Kalkolitik (yaklaşık MO 6000 - 5700/5600)

V a-f Gec Neolitik (yaklaşık MO 6500/6400 - 6000/5900)

Resimler için bkz., Özdoğan, M. ve diğ. Ed. 2011 - Erken Neolitik in Turkey MO 7000 - 6500)

New Excavations ve New Research,
Saklı Medya Sanat Yayınları. İstanbul.

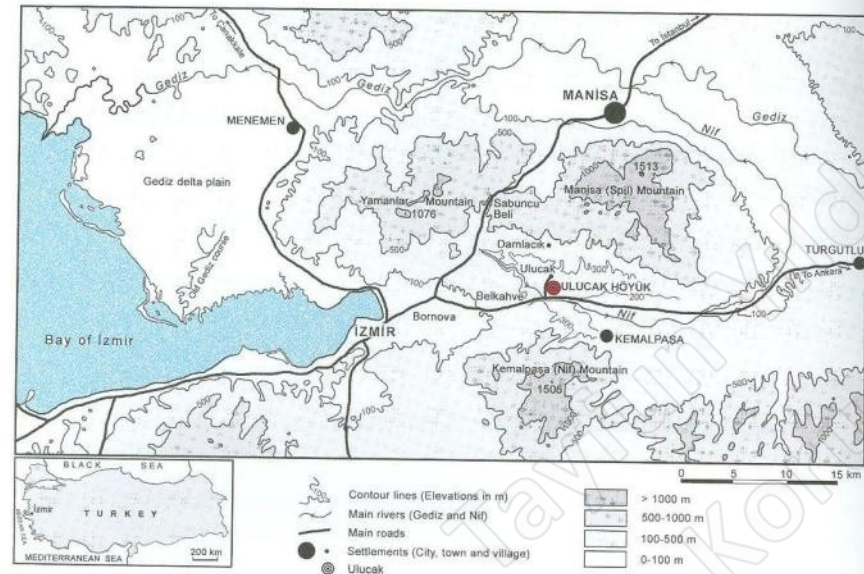


Fig. 1 - Location of Ulucak Höyük.

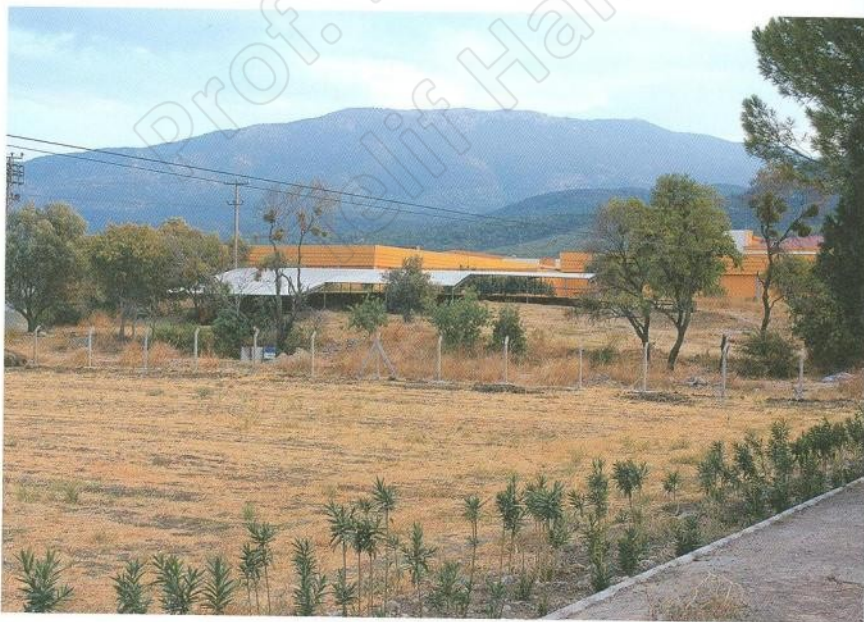


Fig. 2 - View of Ulucak Höyük from north.

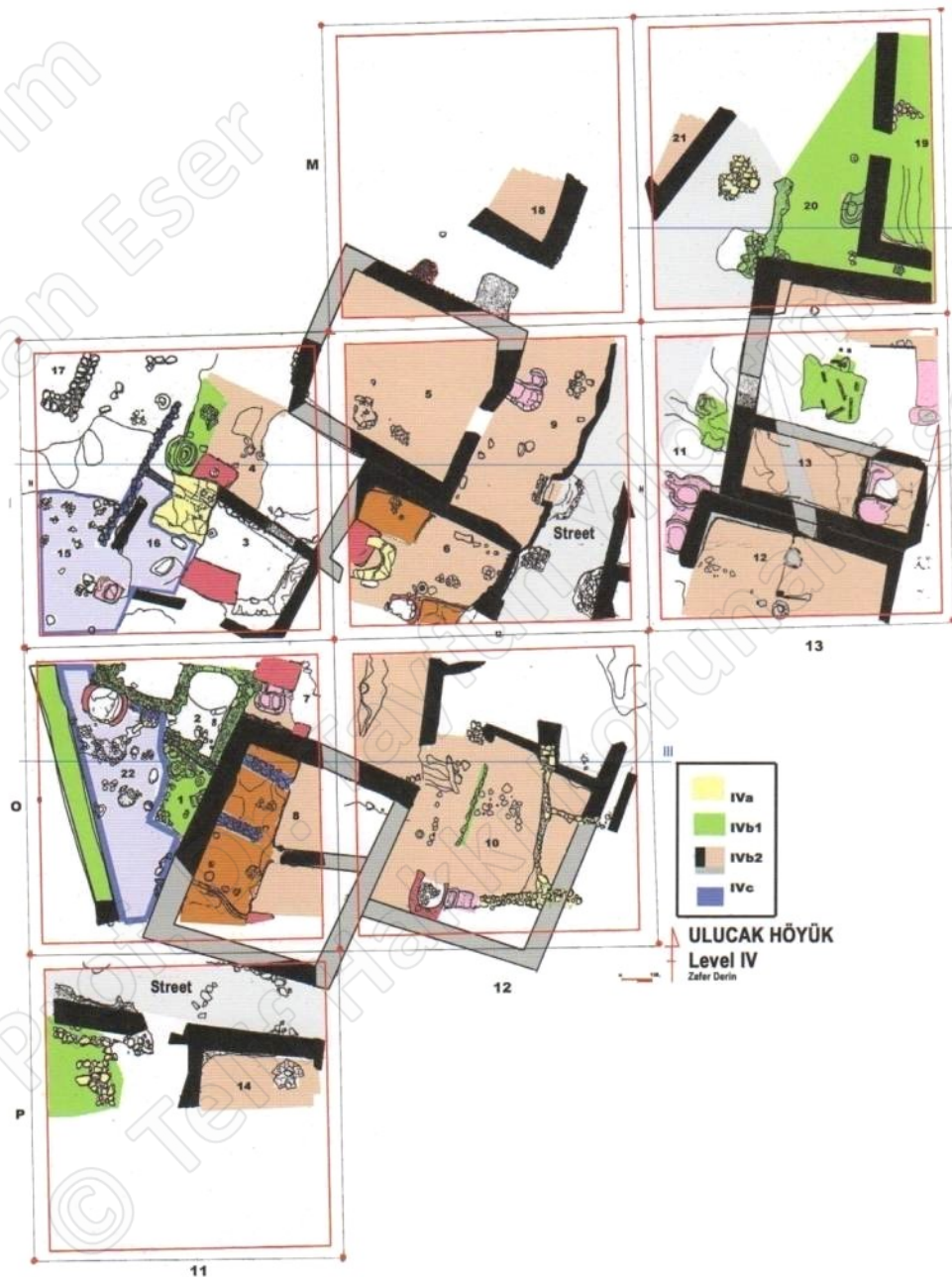


Fig. 3 - Plan of Ulucak Phase IVa-c.



Fig. 4 - Buildings 12 (left) and 13 (right) (Phase IVb).



Fig. 5 - Architectural remains of early phases of Level IV. On right, stone foundations of Building 17 from Building Phase IVg. On left, Building 36 of Phase IVk with its stone foundations and pavement



Fig. 6 - Plan of early IV and Va structures in grid N11.



Fig. 7 - Big storage vessel from Phase IVb.



Fig. 8 - Male and female figurines found in Building 13 in front of the painted wall inside a bowl filled with obsidian and chert flakes and tools (Phase IVb).



Fig. 9 - Anthropomorphic vessel found next to the western wall of Building 8 (Phase IVb).



Fig. 10 - Polypod vessel fragment ("offering table") from Phase IVb.



Fig. 11 - Biconical sling missiles (Phase IVb).



Fig. 12 - Blades (Phase IVb).



Fig. 13 - Flint scrapers (Phase IVb).



Fig. 14 - Clay jar lid with mat impressions (Phase IVb).



Fig. 15 - Stamp found in Building 12 (Phase IVb).



Fig. 16 - Polished axes (Phase IVb).



Fig. 17 - Post-wall structures (Buildings 22-26) exposed in area L13 (Phase Va).

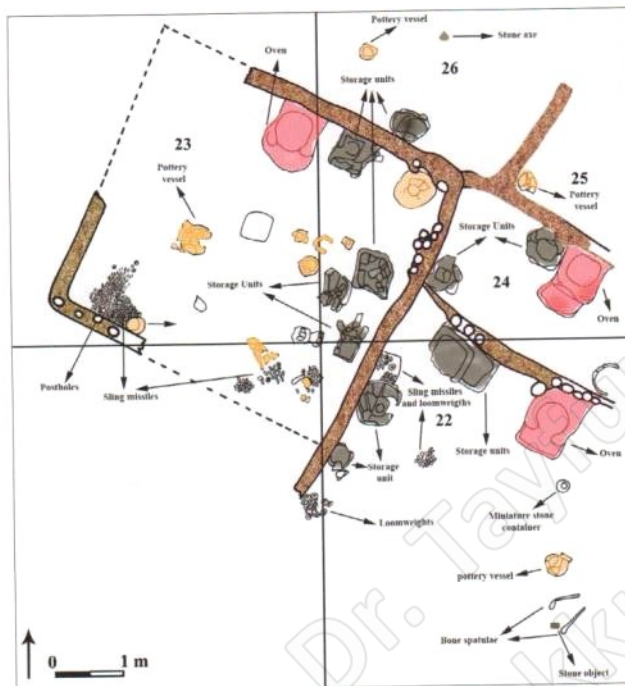


Fig. 18 – Plan of Va structures. Note the concentrations of sling missiles, loom weights, and abundance of storage facilities.



Fig. 19 – Concentration of sling missiles in SW corner of Building 23 (Phase Va).



Fig. 20 – Phase Va as exposed in area N11 (Buildings 27 and 28). Note the sling missile concentration and the free-standing storage unit.



Fig. 21 – Various decorated sherds (Phase Va).



Fig. 22 - Various lugs and knobs (Phase Va).



Fig. 23 - Various sherds (Phase Va).

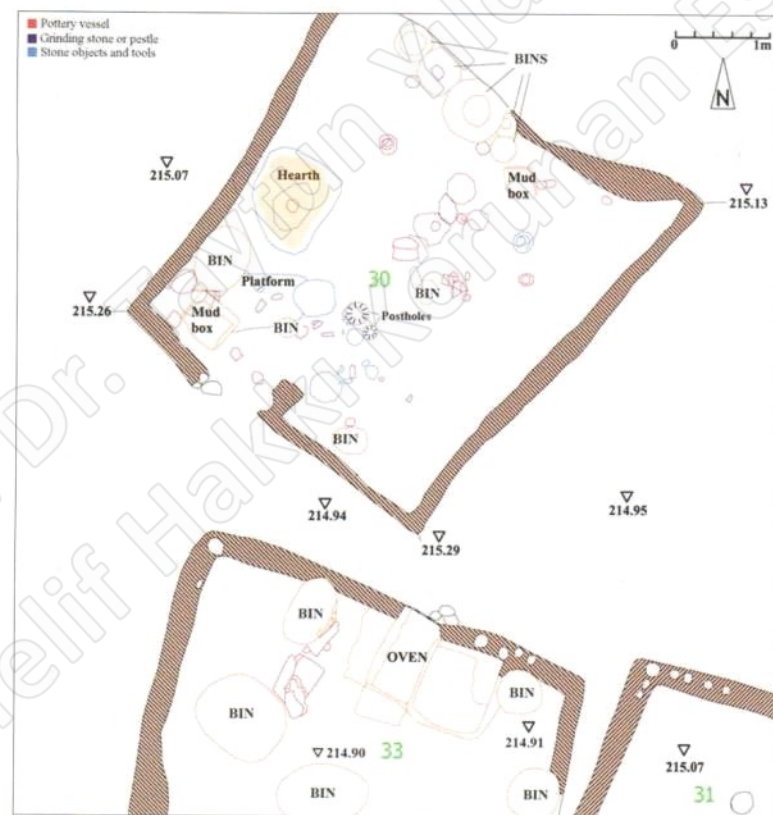
Fig. 24 -
Two bone
spatulæ as
they were
found in
Building 22
(Phase Va).

Fig. 25 - Plan of Buildings 30, 31, and 33 in grid L13 (Phase Vb).



Fig. 26 - Building 30. View from south (Phase Vb).



Fig. 27 - Some of the complete vessels found in Building 30 (Phase Vb).



Fig. 28 - Varied pottery from Phase Vb.



Fig. 29 - Various lugs from Phase Vb.



Fig. 30 - Fragments of a vessel with plastic application (Phase Vb).



Fig. 32 - Idol with a textile fragment found in Building 33 (Phase Vb).



Fig. 33 - A pendant (Phase Vc).



Fig. 31 - Stamps (Phase Vb). Right one found in Building 33 in association with spindle whorls.



Fig. 34 - Brown burnished pottery from Phase Vf.



Fig. 35 - Various lugs (Phase Vf).



Fig. 36 - Red slipped and burnished pottery (Phase Vf).



Fig. 37 - Architectural features of Level VI in grid L13.

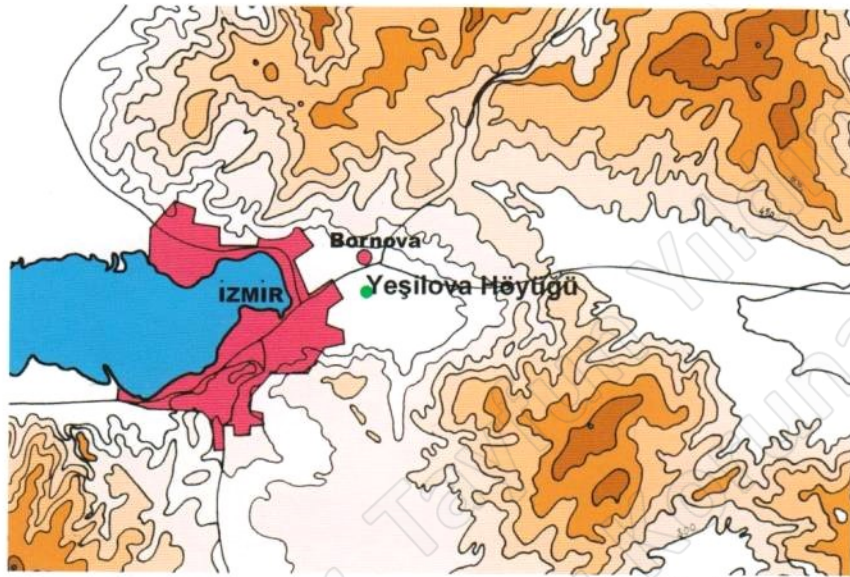


Fig. 1 - The location of Yeşilova Höyük in the Izmir region.



Fig. 2 - Aerial view of the location of Yeşilova Höyük.

Yeşilova Hoyuğu; İzmir ili merkezinde, Bornova ilçesi sınırları içindeki Karacaoğlan mahallesinde, Manda çayı ile Gokdere arasında yer almaktadır. Yerleşim Alanı bugünkü sahile kuş uçuşu 4.5 km mesafededir. Doç.Dr.Zafer Derin tarafından kazılmıştır. Kültür dolgusu içinde birbirinden farklı üç kültür katı saptanmıştır. Buna göre kültür katları yüzeyden başlayarak; I. Kat Roma-Tunç Çağ, II. Kat (1-2 tabakaları), Kalkolitik Donem ve III. Kat (1-8 tabakaları) Neolitik Donem şeklinde sıralanabilir. Höyük'teki ilk yerleşim toprak yüzeyinden 4-5 metre derinde günümüzden en az 8-9 bin yıl önce Neolitik Çağ'da başlamıştır. III. Kat Yeşilova Hoyuğu'nun en uzun süreli ve en kalın kültür katıdır. 12 mimari katı olduğu anlaşılan bu sürecin de kendi içinde üç evreye sahip olduğu anlaşılmıştır.

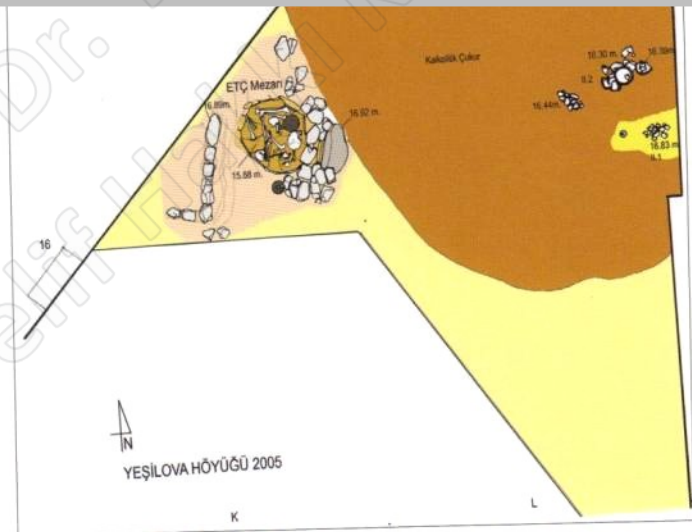
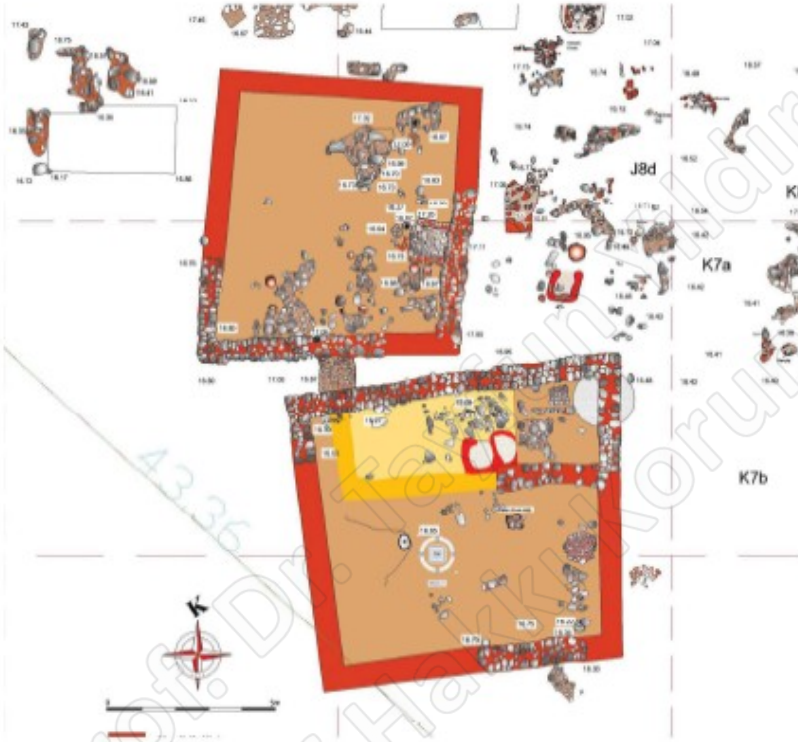


Fig. 4 - The Chalcolithic settlement and Early Bronze Age burials





Restm 4 / Figure 4: Neolitik IV.1a Seviyest / Neolithic Level IV.1a



Restm 7 / Figure 7: Neolitik Dönem Figürini / Neolithic Figurine



Restm 5 / Figure 5: Neolitik Dönem Çanak çömlekleri / Neolithic pottery



Fig. 7 - Neolithic settlement Level III.1a.



Fig. 9 - Neolithic period Levels III.1-2 pottery.



Fig. 8 - Neolithic period Levels III.3-5 pottery.



Fig. 10 - Neolithic period Levels III.6-8 pottery.



Fig. 11 - Pieces of marble vessels.



Fig. 12 - A clay figurine and a bone idol.

Fig. 13 - A stone animal head
from Level III.3.

Fig. 14 - Stone implements with bone and animal horn handles.



Fig. 15 - Flint scrapers and piercers.



Fig. 17 - Flint and obsidian cores.



Fig. 16 - Flint and obsidian blades from Level III.



Fig. 18 - Bone awls from Level III.



Fig. 19 - Necklace beads of mussel shell and rectangular stone beads.



Fig. 21 - Miniature table from Level III.1.



Fig. 20 - Sea shells.



Fig. 22 - Pintadera-seal depicting a labyrinth design from Level III.2.



Resim 4
Neolitik III.1-a katı
kırmızı astarlı
keramiği



Resim 5
Neolitik III. 1-a katı
mühürleri



Resim 6
Neolitik III. 1-a katı
serpantin kesiciler

Ege Gübre Yerleşimi



Fig. 1a - Neolithic settlement of Ege Gübre, aerial photo.

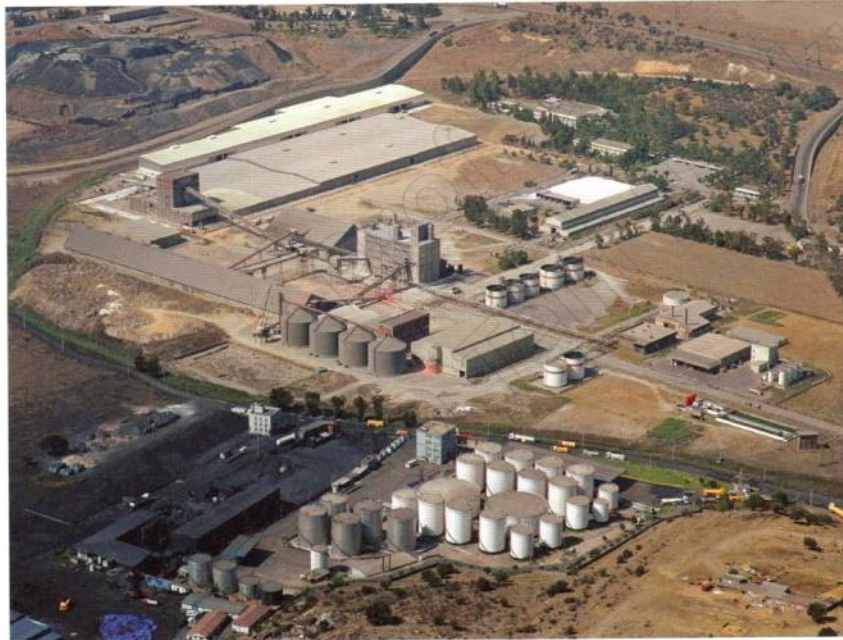


Fig. 1b - Neolithic settlement of Ege Gübre, aerial photo.

İçerisinde bulunan Ege Gübre Fabrikası'nın sınırları içerisinde. Yerleşim yerindeki ilk kazı çalışmaları 1994 ve 2000 yıllarında İzmir Muzesi ve Prof. Dr. Sebastiana Lagona başkanlığındaki bir ekip tarafından gerçekleştirilmiştir. Daha sonra aynı alanda 2004-2008 yılları arasında İzmir Muzesi ile Ege Üniversitesinden Doç.Dr.Haluk Sağlamtimur tarafından kurtarma kazıları yapılmıştır. Bu kazılar sonucu günümüz tarla yüzeyinin ortalama 3-4 metre altında Neolitik Donem tarihlenen yerleşim yeri ortaya çıkarılmıştır. Stratigrafi;

Hellenistik Donem Ege Gubre I
 Kalkolitik Donem Ege Gubre II
 Neolitik Donem Ege Gubre IIIa (Tek odalı dikdörtgen mekanlar, iki odalı mekanlar, yuvarlak yapılı mekanlar, 2. gec evre çevre duvarı)
 Neolitik Donem Ege Gubre IIIb (Tek odalı dikdörtgen ve yuvarlak yapılı mekanlar, erken çevre duvarı)
 Neolitik Donem Ege Gubre IV (Yuvarlak yapılı mekanlar)

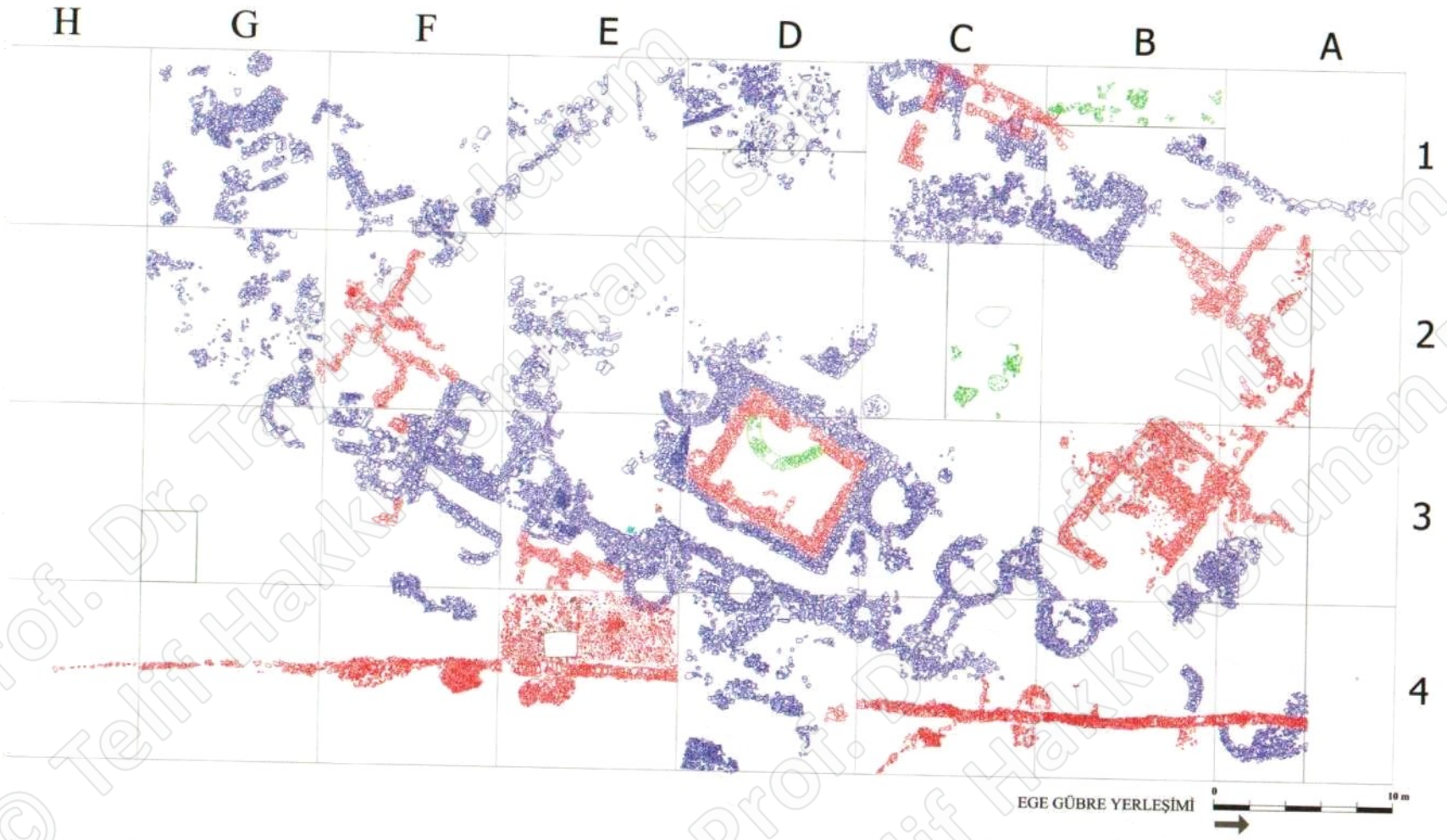


Fig. 2 - Ege Gübre settlement, architectural plan of Level III and IV.



Fig. 3 - Neolithic settlement of Ege Gübre, general view.

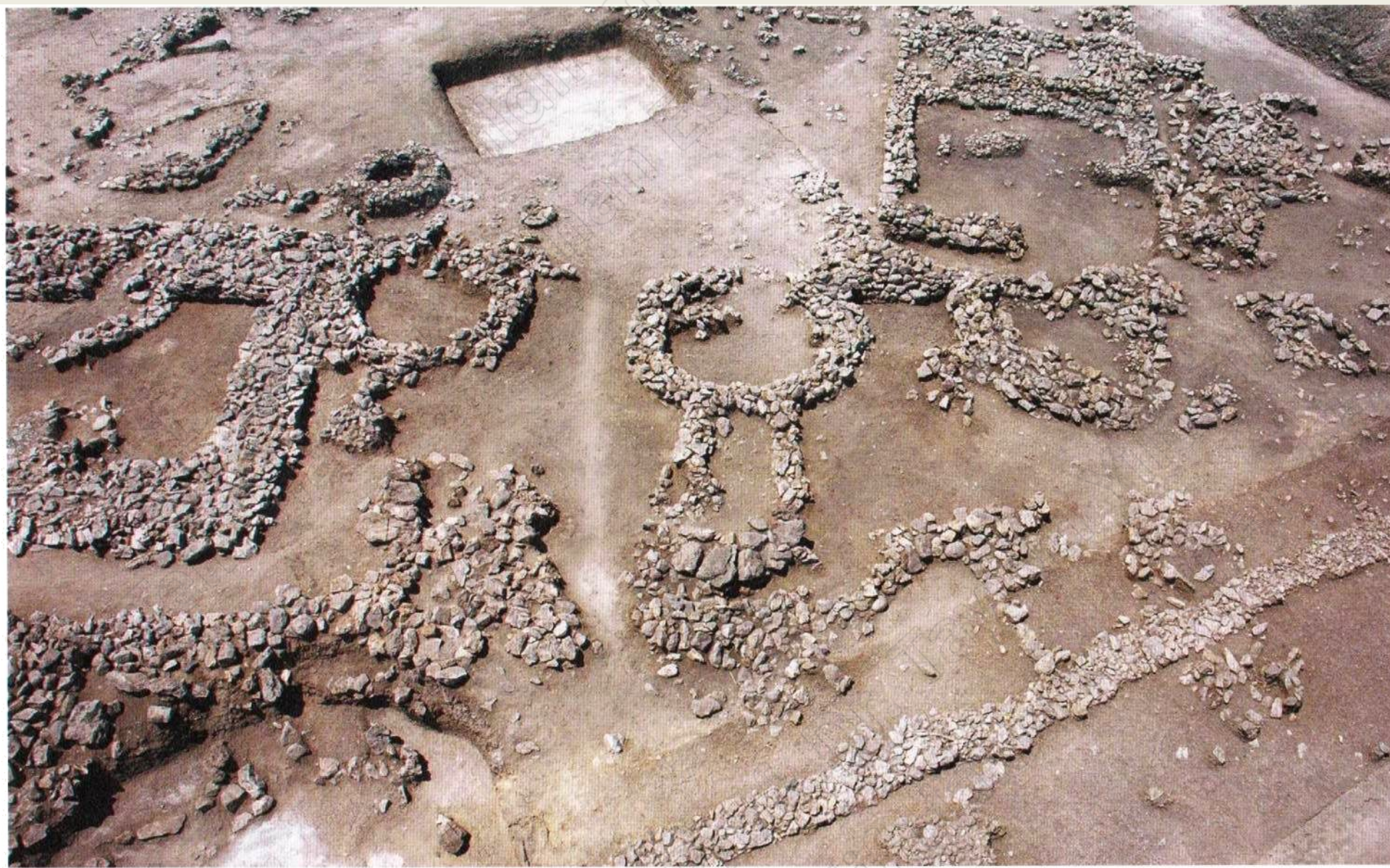


Fig. 4 - Circular and rectangular structures with stone foundations.



Fig. 5 - Rectangular structure in trench B3.



Fig. 7 - Circular structures.



Fig. 6 - Rectangular structure in trench D3.

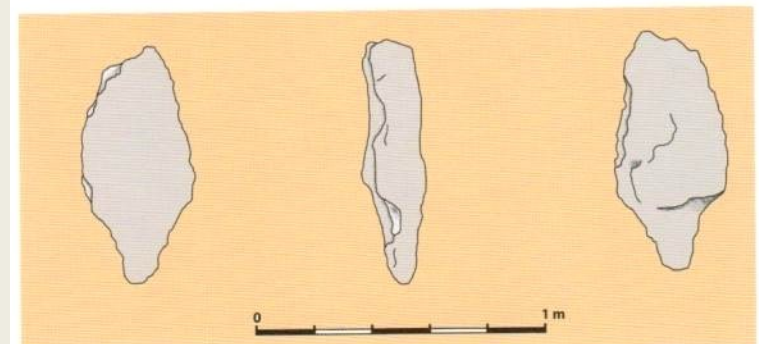
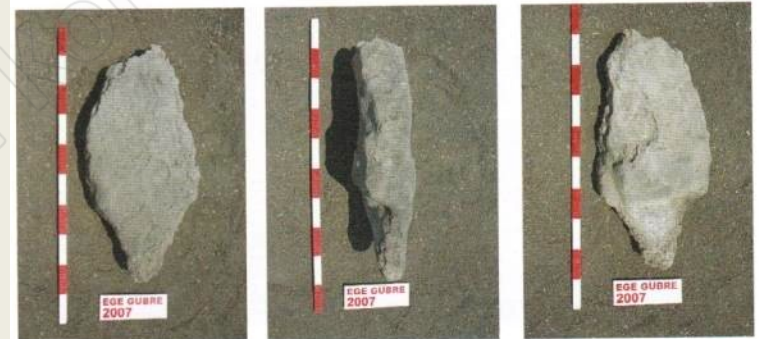


Fig. 8 - Stele found in the courtyard.



Fig. 9 - Red on brown and grey slipped pottery.

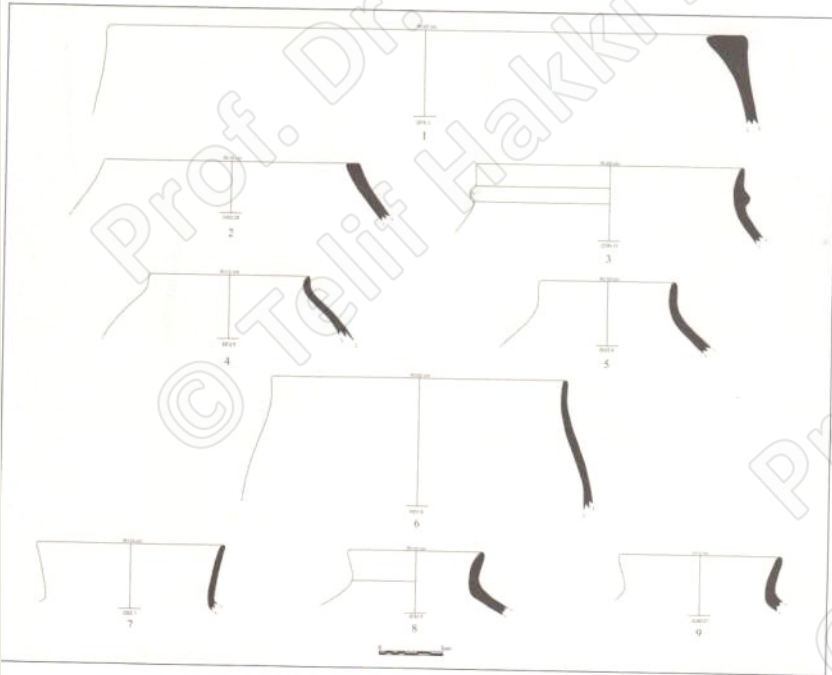


Fig. 10 - Vessel forms of the red slipped pottery.

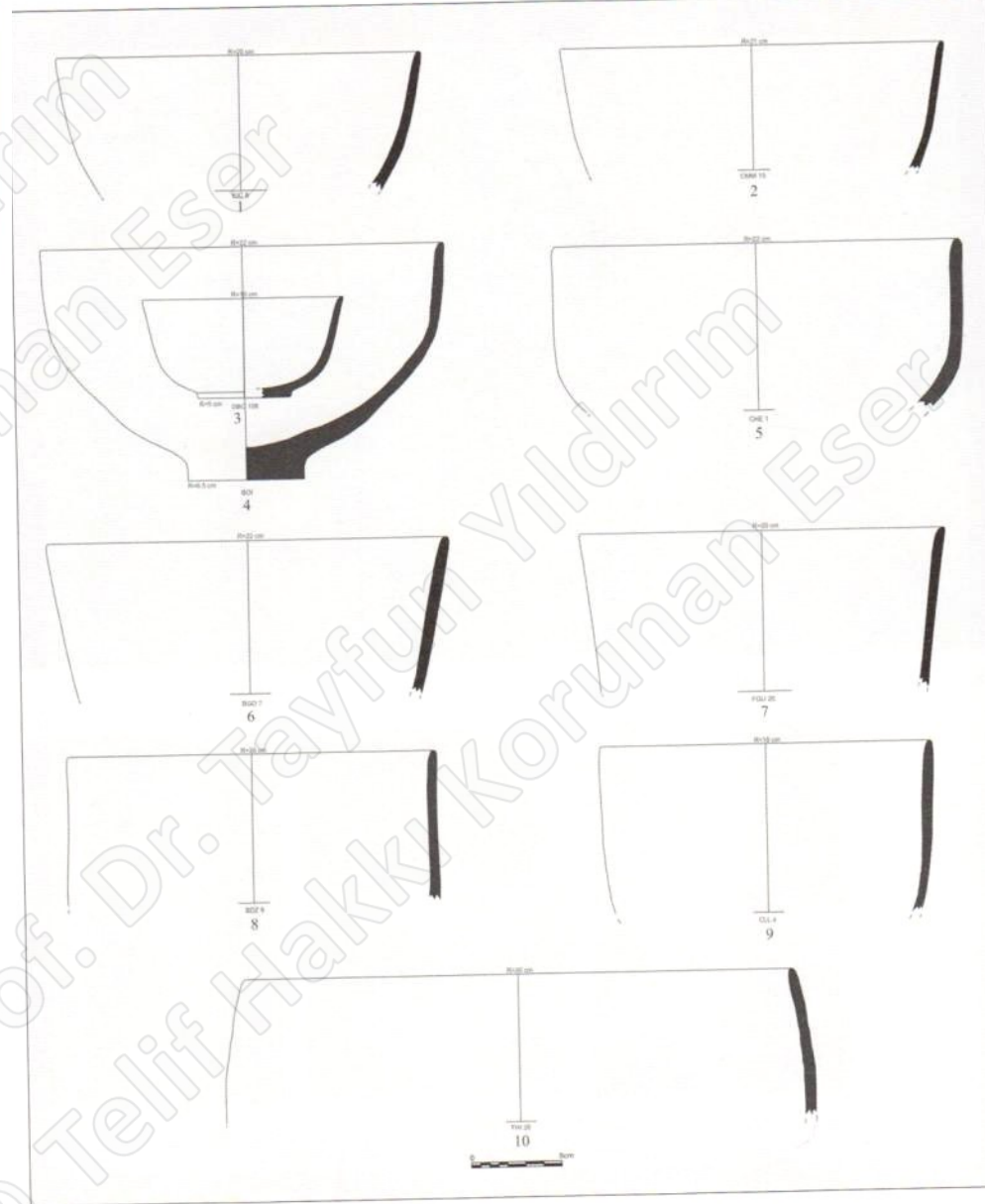


Fig. 11 - Vessel forms of the red slipped pottery.

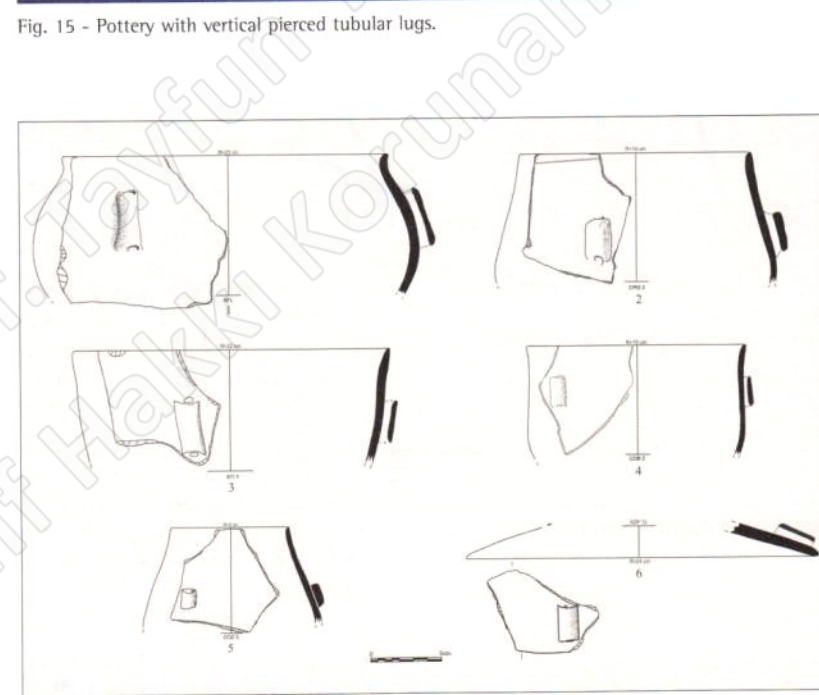
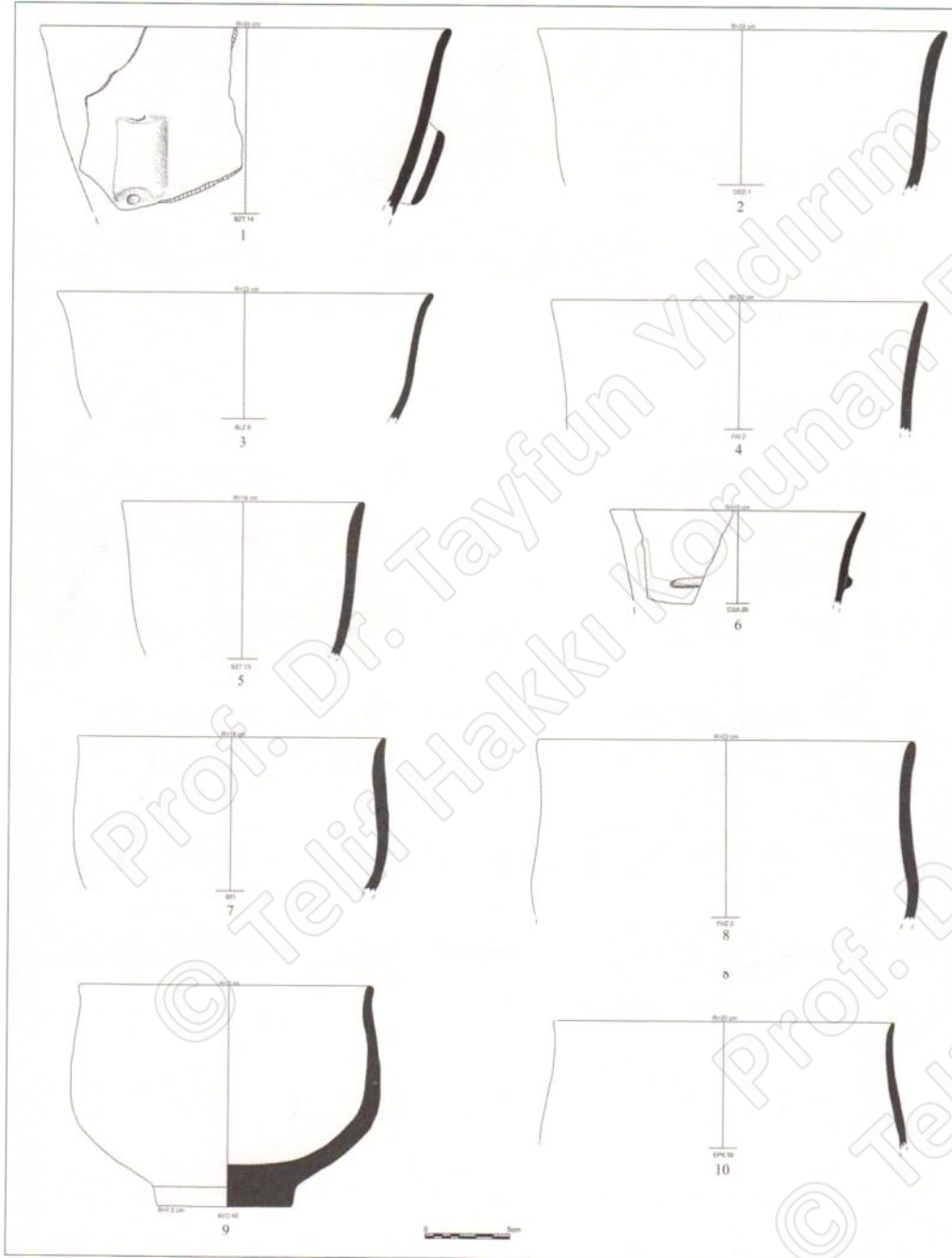


Fig. 12 - Vessel forms of the red slipped pottery.

Fig. 16 - Pottery with vertical pierced tubular lugs.

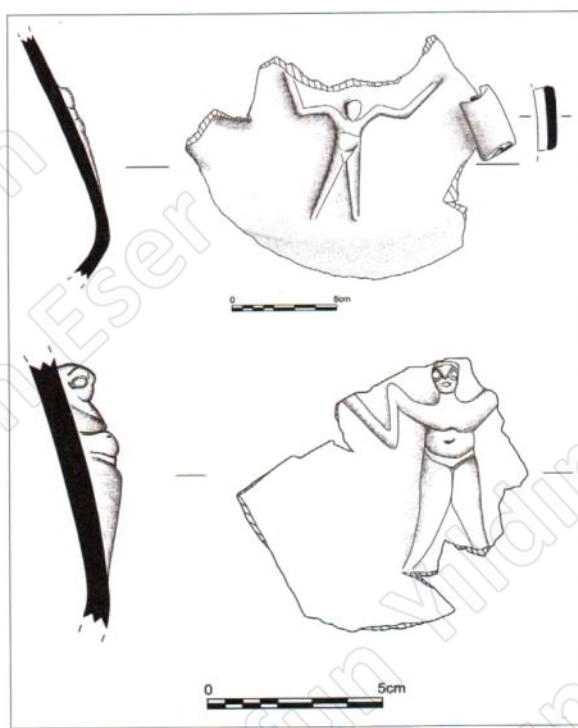
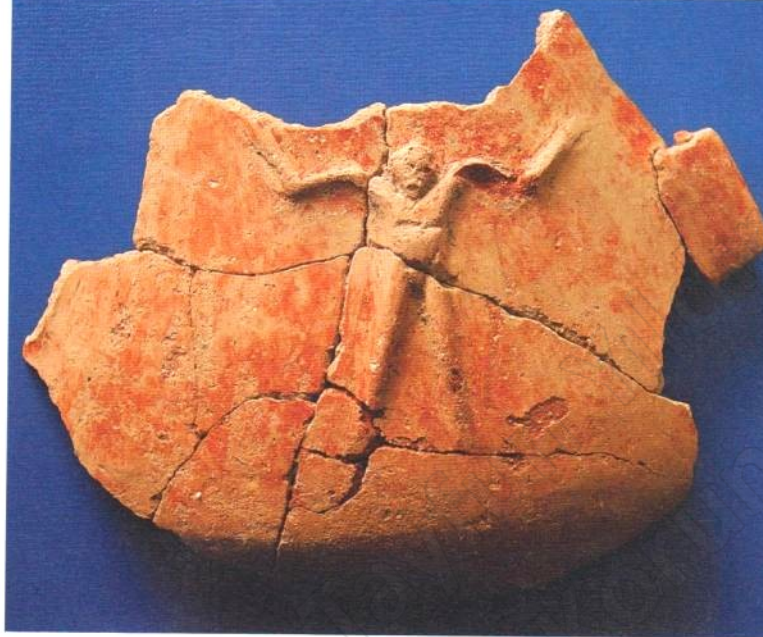


Fig. 17b - Drawings of the relief decorated red slipped pots.



Fig. 18 - Red slipped pottery with relief decoration.

Fig. 17a - Red slipped pottery with human motifs in relief.



Fig. 19 - Red slipped impresso pottery.



Fig. 20 - Red slipped impresso pottery.



Fig. 21 - Sitting goddess figurine.

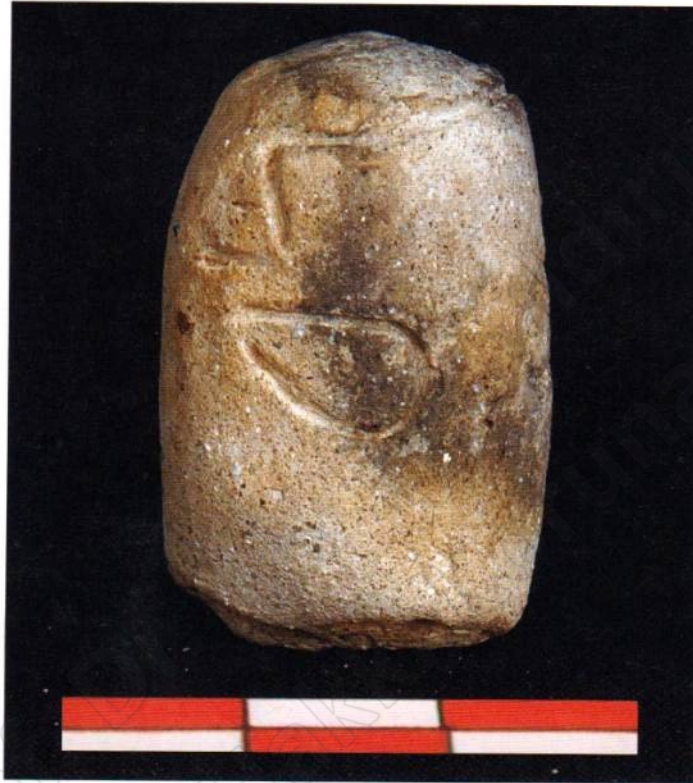


Fig. 22 - Head of a figurine.



Fig. 23 - Head of a figurine.



Fig. 24 - A pintadera.



Fig. 25 - A pintadera.



Fig. 26 - Pintadera made of *Bolinus brandaris* shell.



Fig. 27 - Bone awls.



Fig. 29 - Mortars and pestles.



Fig. 28 - Stone celts and chisels.



Fig. 30 - Flint and obsidian blades.



Fig. 31 - Flint blade cores.



Fig. 32 - Skeleton lying in hocker position, in east-west direction.

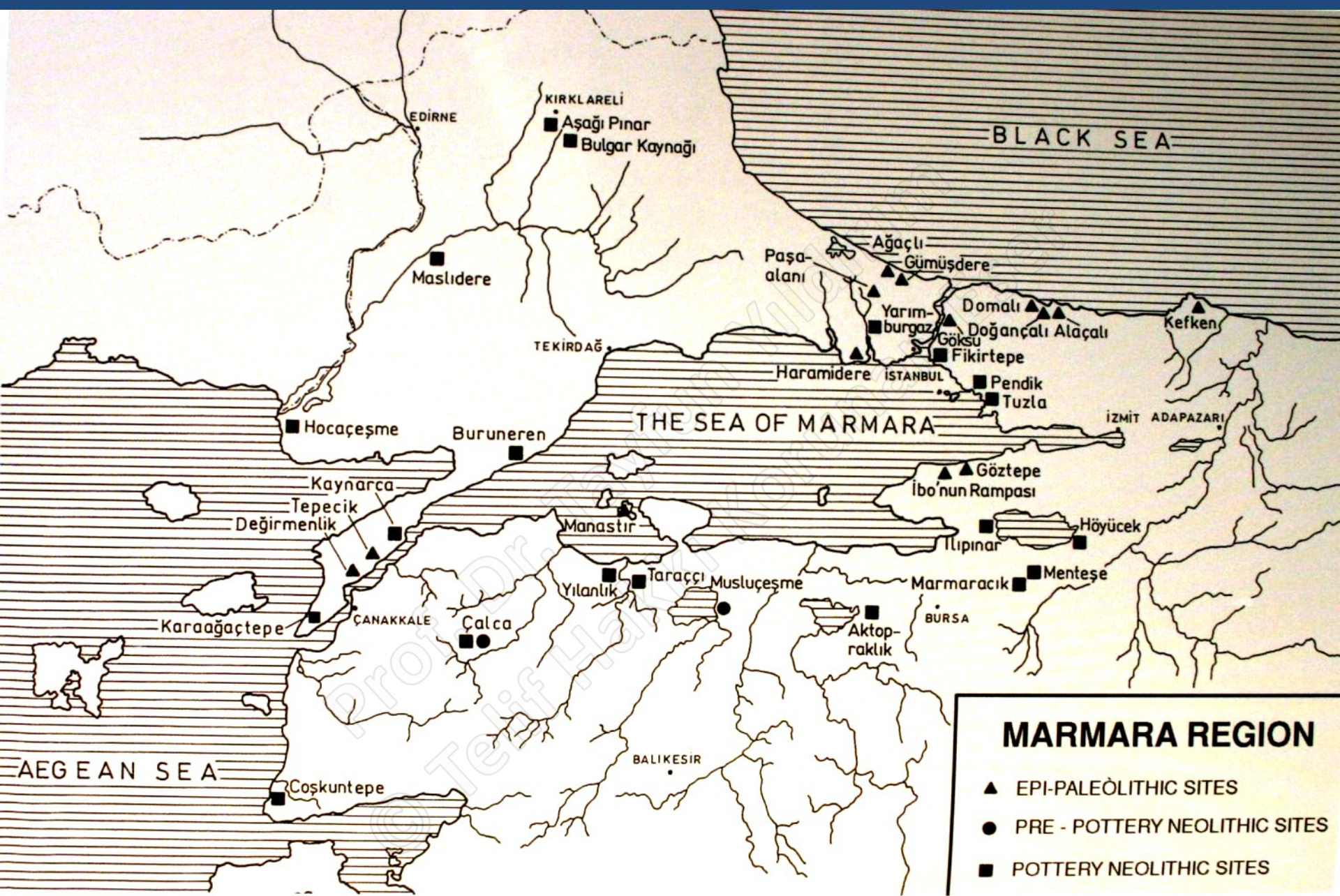


Fig. 1 - Marmara Bölgesi'nde Mezolitik ve Neolitik Çağlar'a ait başlıca buluntu yerleri

Resimler için bkz, Özdoğan, M. ve diğ.
(Ed.)2011 - 2014 **Neolithic in Turkey**
New Excavations ve New Research,



Kuzeybatı Anadolu'da Tarihöncesi Yerleşim Yerleri (Özdoğan - Gatsov 1998, Fig.1'den geliştirilmiştir) N.

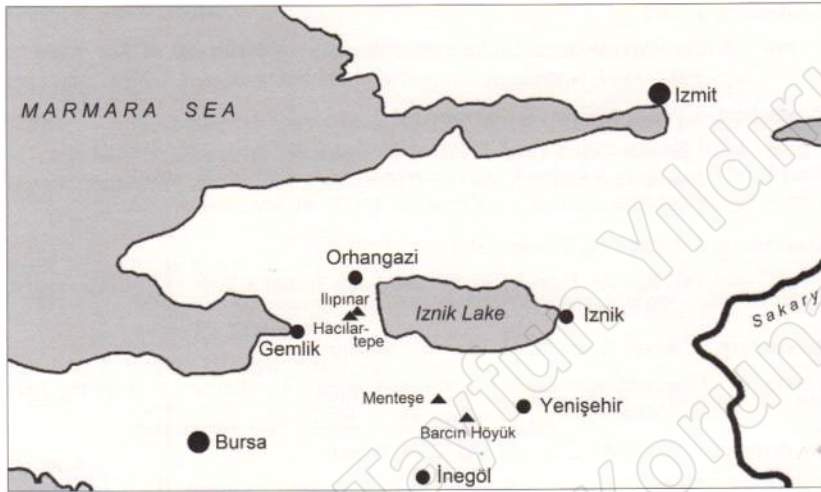


Fig. 1 - Map of the Iznik-Yenişehir region with the investigated sites of Ilipinar, Hacilar-tepe and Mentese. Barcin Höyük has been under excavation since 2005.

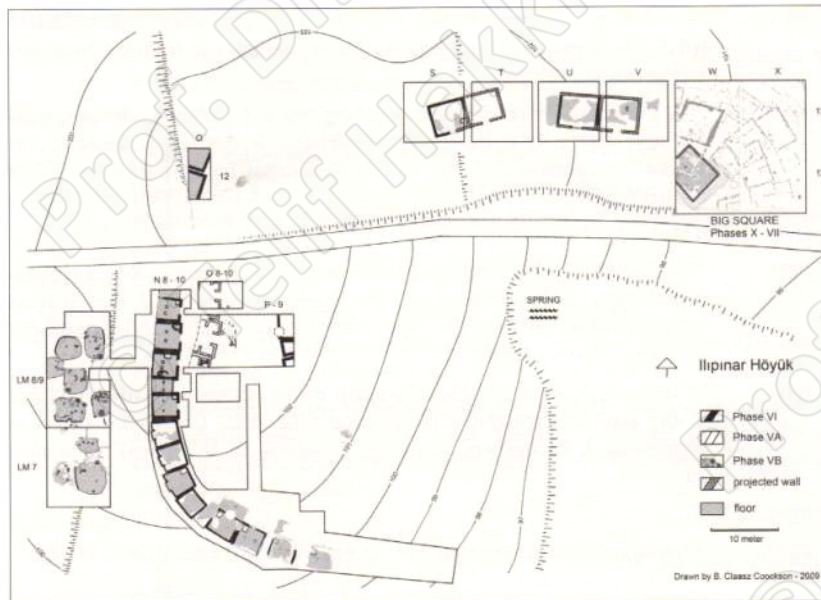


Fig. 2 - Contour map and different phases with architectural remains. Right upper corner: the big square yielded most data from the earliest half of the occupation history (phases X to VII).



Fig. 5 - Ground floor of H36 with collapsed oven wall in the center.



Fig. 6 - Ground floor of boundary building H33 (Ilipinar VI). The sticks mark the imprints of posts that supported the upper storey.

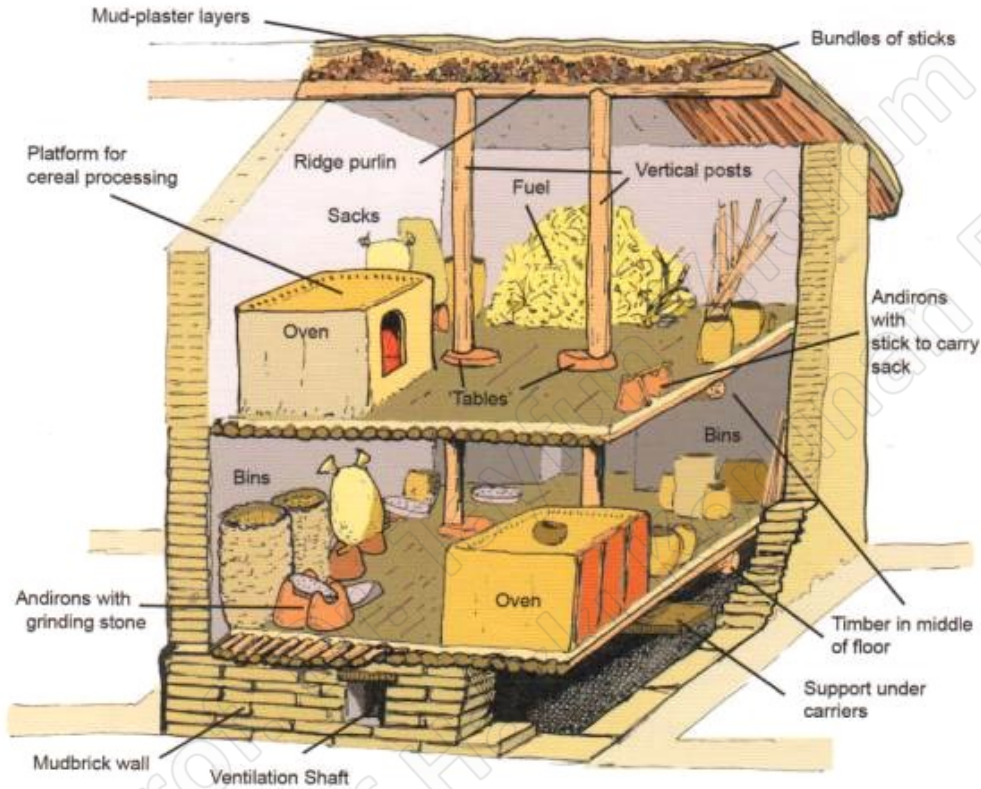


Fig. 7 - Reconstruction of a typical boundary house of Ilipinar VI. The ground floor as well as the floor of the upper storey are of the grillage type supported by beams secured in the lateral walls. The entrance was from the village side. Ovens were in the corner right to the entrance. In the upper storey similar ovens were often found in the same corner.

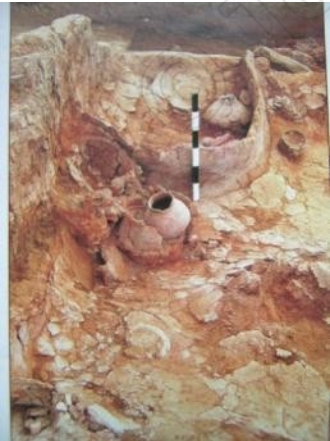


Fig. 18 - X. evre, ağız kısmı oval, derin kâse.

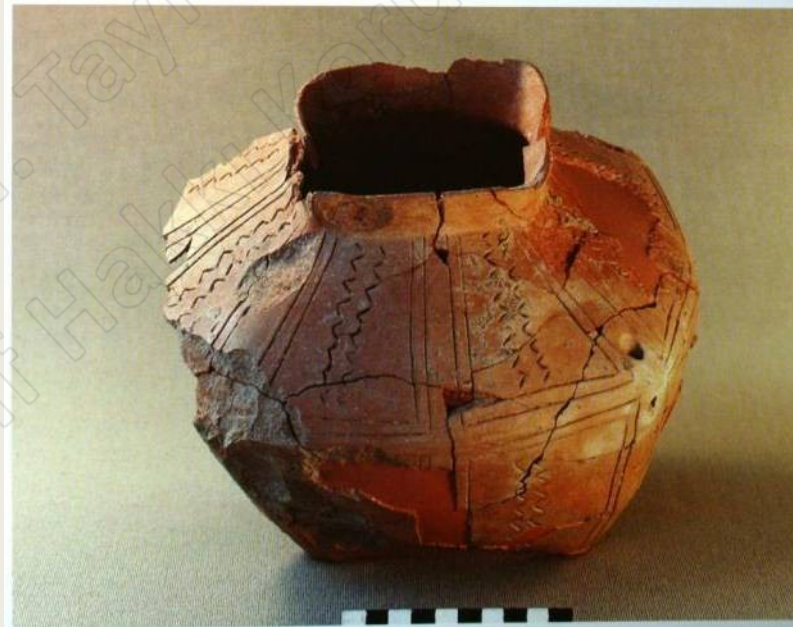


Fig. 19 - VIA evresi; geometrik düzende çizi bezemeli dörtgen kap.



Fig. 12 - Examples of pottery from phases VIc and VIb.

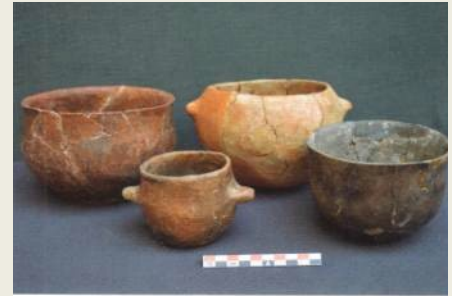
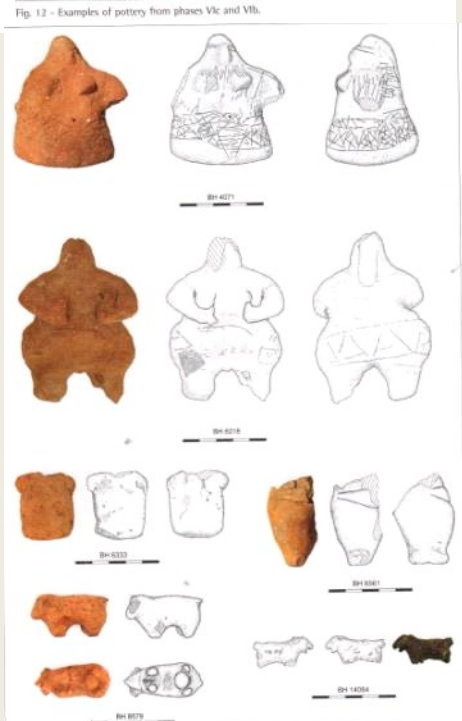
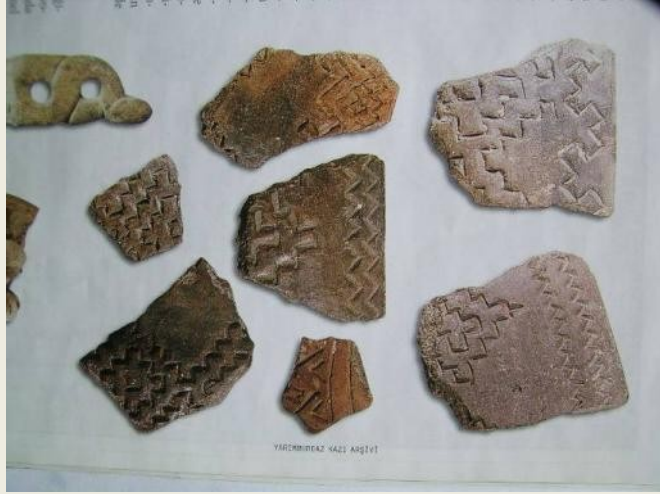


Fig. 13 - Reconstructed vessels dating to phases VIc and VIb.



Fokke GERRITSEN – Rana ÖZBAL – Laurens THISSEN





Yarımburgaz- İstanbul

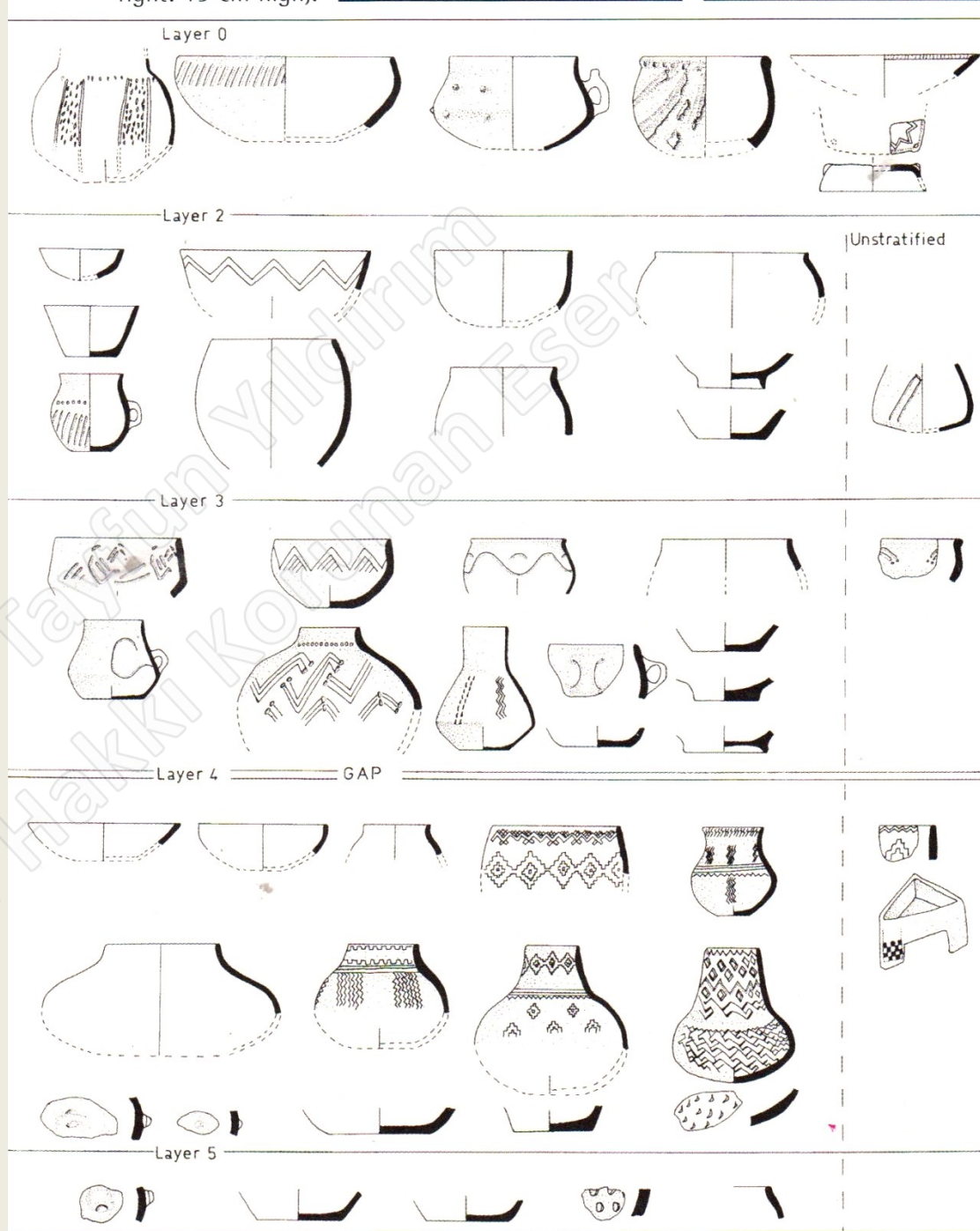


fig. 36 - Yarımburgaz simplified typological chart of Yarımburgaz pottery according to phases

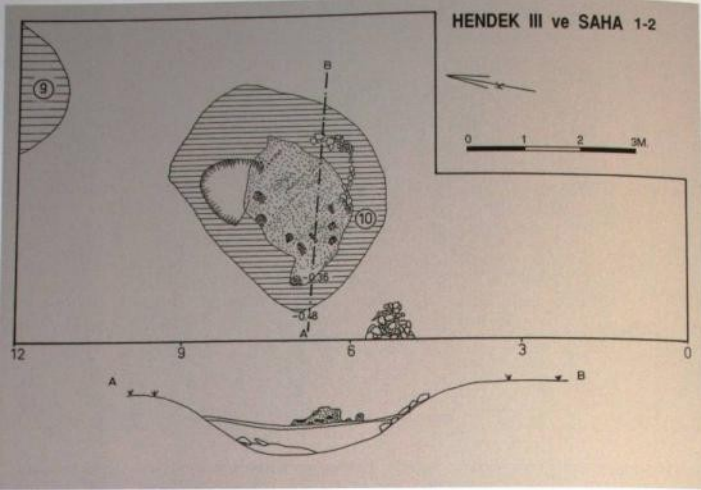


Fig. 9 - Fikirtepe çukur tabanlı yuvarlak külebe.

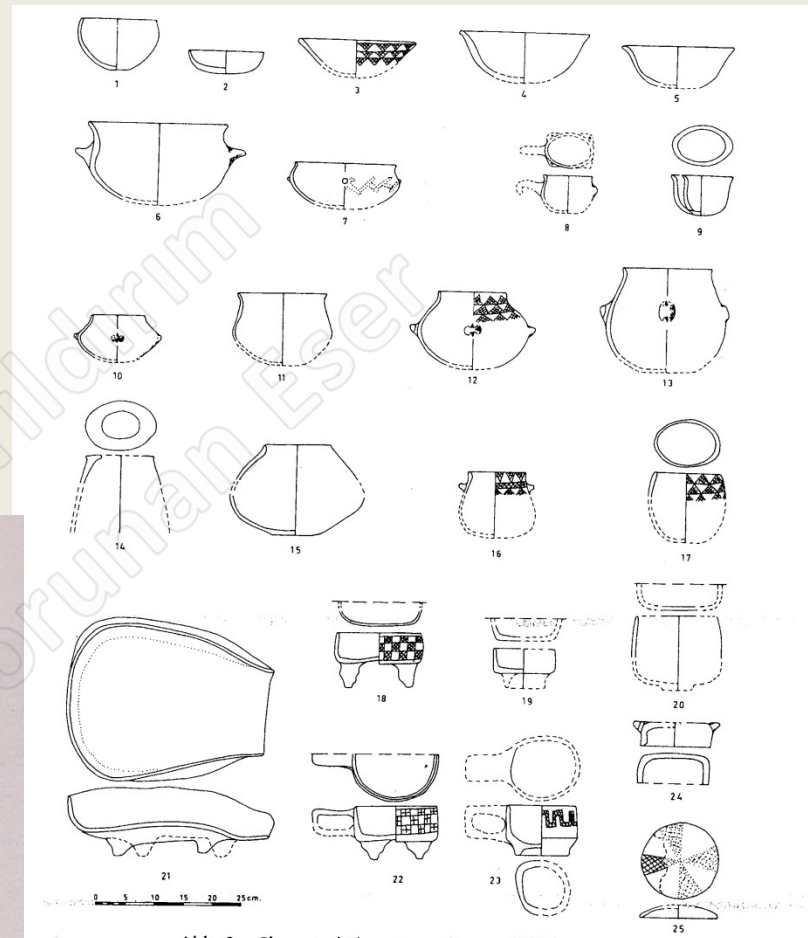


Abb. 3 Characteristic pottery shapes of Fikirtepe



Fig. 14 - Fikirtepe; çizgi bezemeli kap.



Fig. 15 - Fikirtepe; kırmızı astarlı, nokta baskı bezemeli kap.

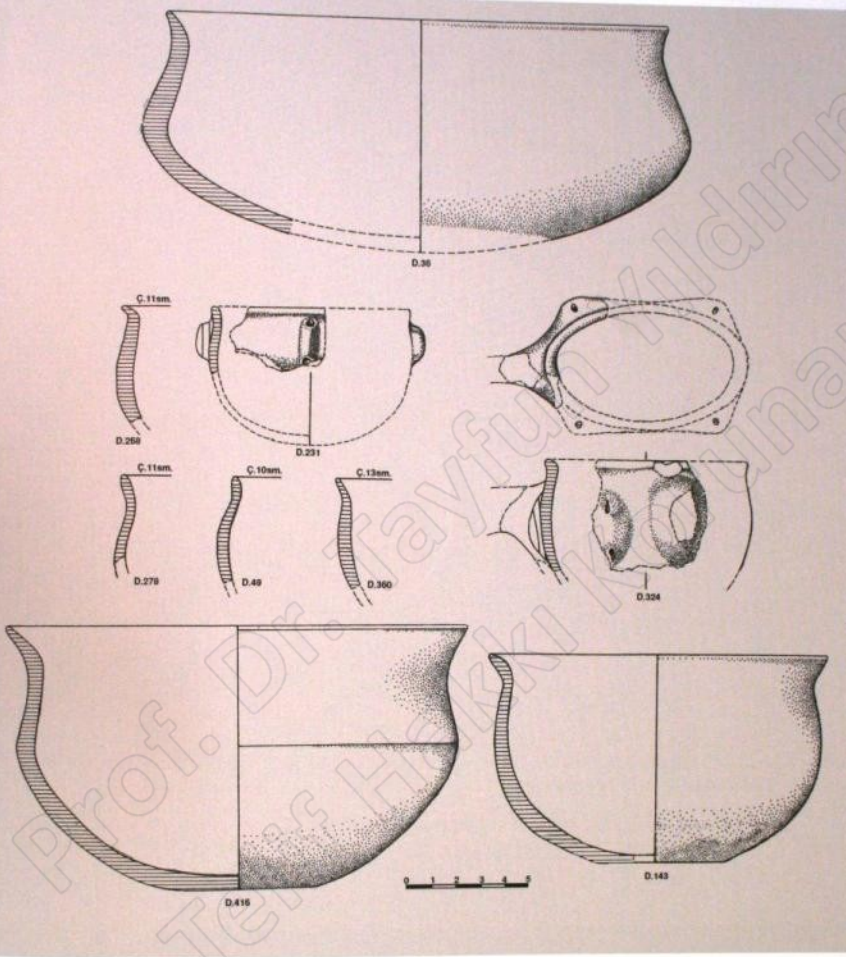


Fig. 11 - Klásik Fikirtepe çanak çömleği.



Fig. 12 - Fikirtepe: köşeli kap.

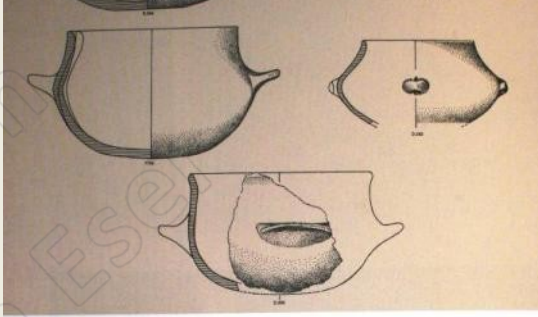


Fig. 6 - Arkaik Fikirtepe çanak çömleği.



Fig. 7 - Pendik, kil heykelcik.

Hammaddeleri arasında ta-
lar oldukça enderdir;
lirginleri ise obsid-
ik bıçak-



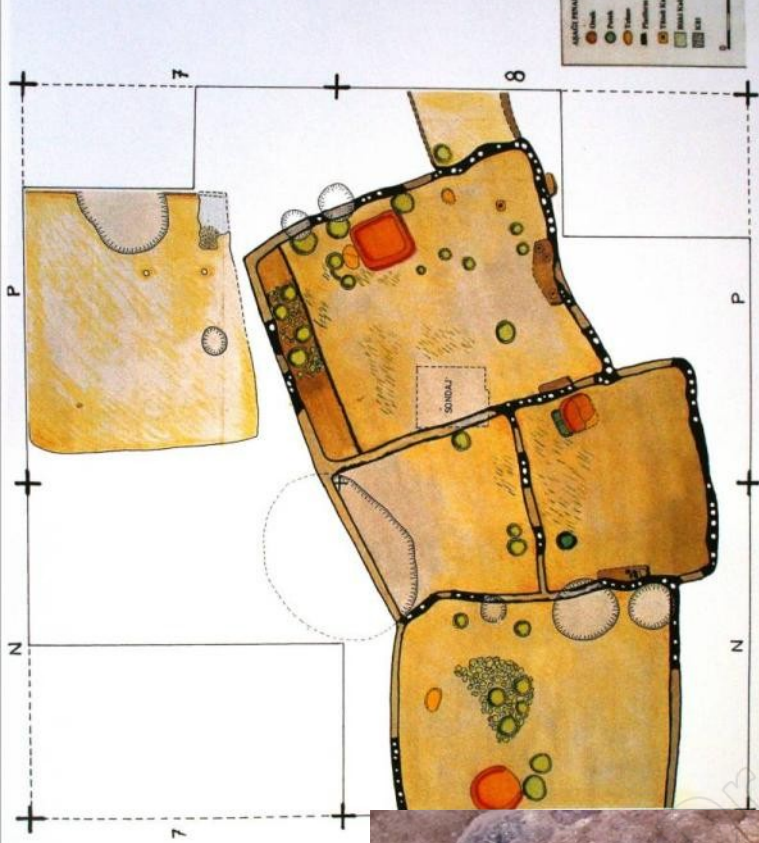


Fig. 29 - Aşağı Pınar VI. tabaka planı.



Fig. 30 - Aşağı Pınar VI. tabaka genel görünüm.

AŞAĞIPINAR KIRKLARELİ



Aşağı Pınar VI. tabaka hasır izli kerpiçler.



Fig. 32 - Aşağı Pınar çeşitli evrelerden hasır izli dipler.



Fig. 33 - Aşağı Pınar VI. tabaka kerpiç ambarlar.



Fig. 38 - Aşağı Pınar VI. tabaka; kırmızı üzerine beyaz boya bezemeli kap parçaları.



Fig. 39 - Aşağı Pınar VI. tabaka; kırmızı üzerine beyaz boya bezemeli, lale biçimli kap.



Fig. 40 - Aşağı Pınar VI. tabaka; lale biçimli kap.





Fig. 35 - Aşağı Pınar VI. tabaka; toplu olarak bulunan 11 kült kabından bazıları.



Fig. 34 - Aşağı Pınar VI. tabaka; silindirik boyunlu kült kabı.



Fig. 17 - Hoca Çeşme IV. evre; anakayaya oyulmuş yuvarlak yapılar ve kazık yerleri.



Fig. 19 - Hoca Çeşme kazı alanı genel görünüm ve önde çevre duvarı.



Fig. 18 - Hoca Çeşme IV. evre; anakaya üzerindeki yapıların planı.



Fig. 20 - Hoca Çeşme evre III-IV; çevre duvar dış yüzünden ayrıntı.



Fig. 22 - Hoca Çeşme insan ve hayvan-betimlemeli kap parçaları.

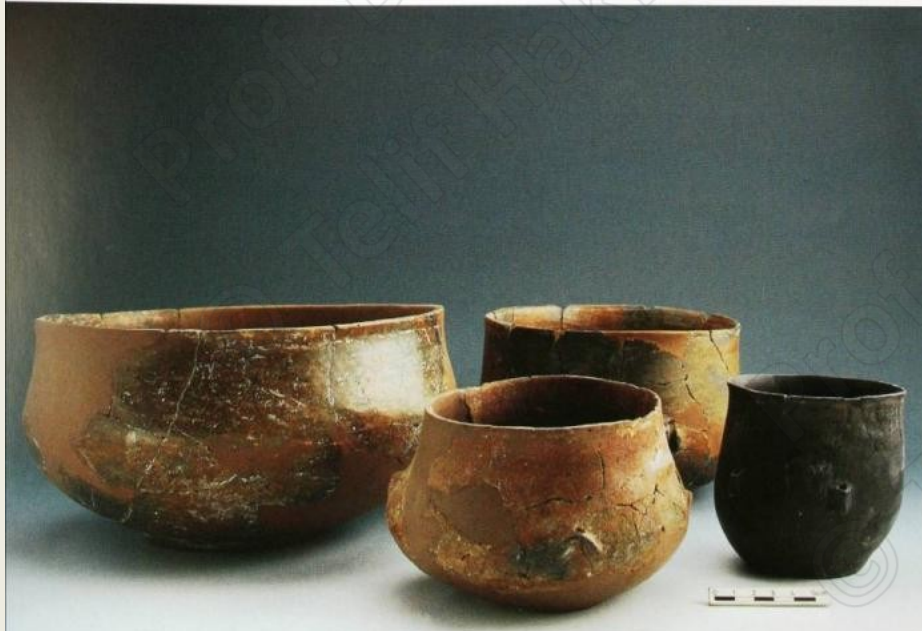


Fig. 23 - Hoca Çeşme III. evre kapları.

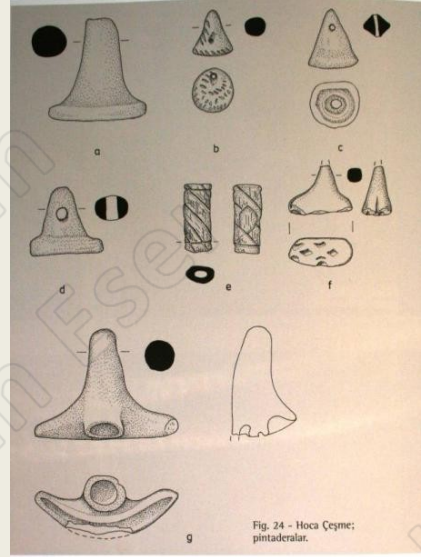


Fig. 24 - Hoca Çeşme; pintaderalar.



Fig. 25 - Hoca Çeşme; semik katıca.

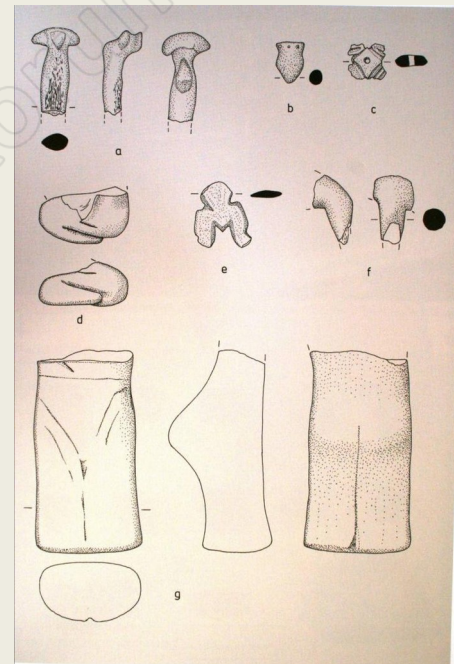


Fig. 26 - Hoca Çeşme takı ve figürinleri: d-0 III-IV. evre taş figürinleri; g) I. evre kil figürin.



Fig. 33 - The wooden figurine of the Neolithic horizon (photo by Bekir Köşker).



YENİKAPI



Fig. 47 - A pot-burial covered with a stone (photo by Bekir Köşker).



Fig. 48 - Vessels used for pot-burials or left as burial gifts (photo by Süleyman Kara).



Fig. 44 - Metro Sector, Burial no. 2 (photo by Bekir Köşker).



Fig. 46 - The jar used for one of the cremation burials (photo by Süleyman Kara).



Fig. 52 - Beads found in the cremation area (photo by Bekir Köşker).



Fig. 53 - Snake of wheat from the Neolithic horizon (photo by Bekir Köşker).