

Batı Anadolu ve Marmara Bölgesi Kalkolitik Yerleşimleri



Yaklaşık tarihler

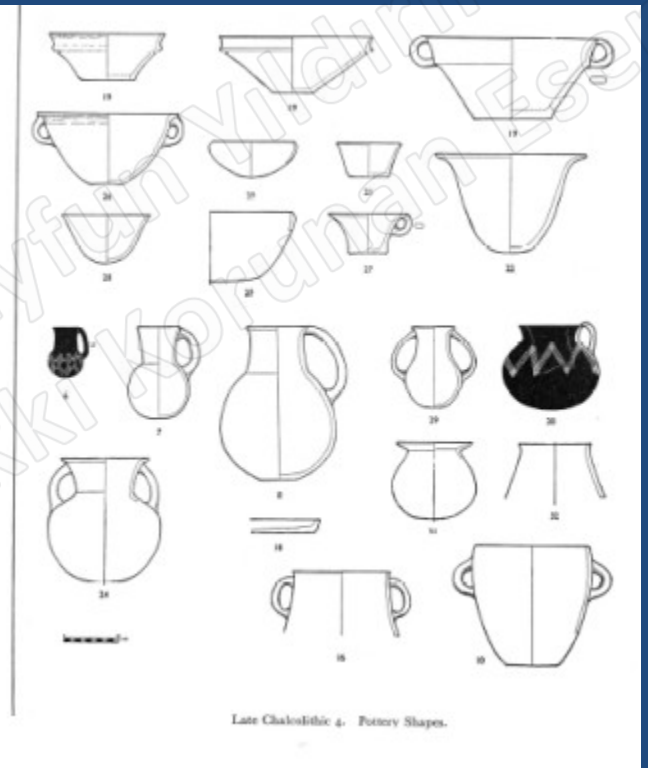
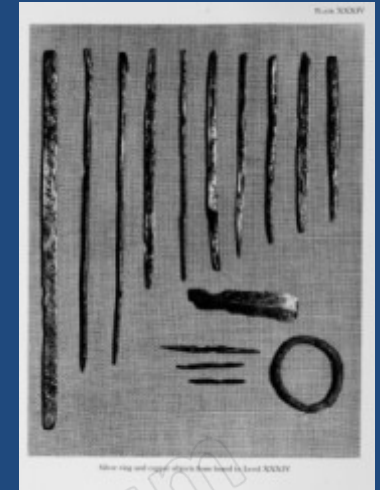
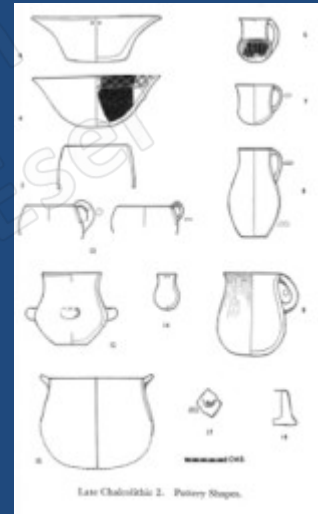
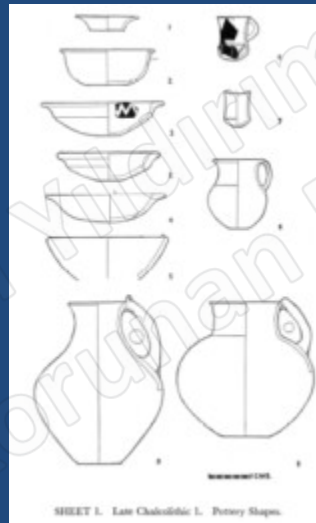
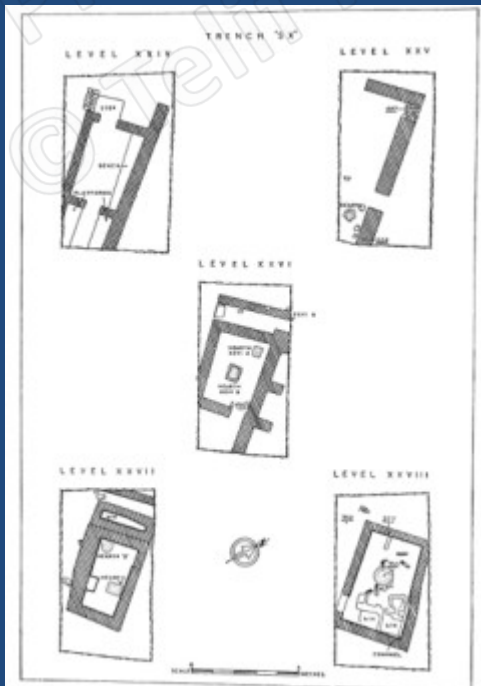
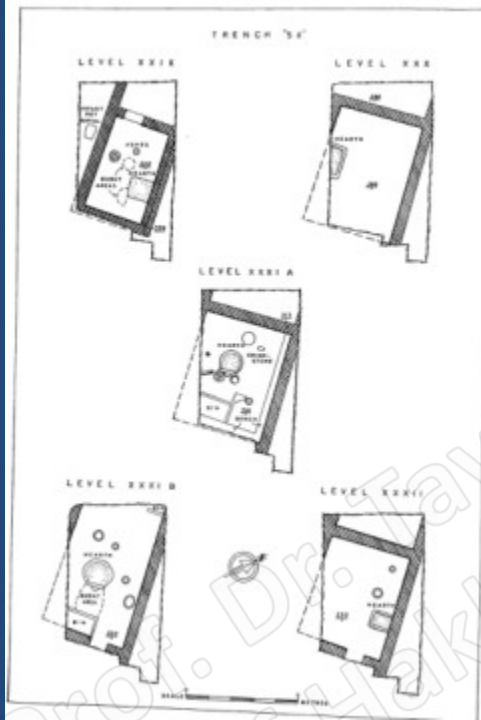
Erken Kalkolitik yaklaşık M.Ö.6100-5500

Orta Kalkolitik yaklaşık M.Ö. 5500-4250

Geç Kalkolitik yaklaşık M.Ö. 4250-3200/3000.

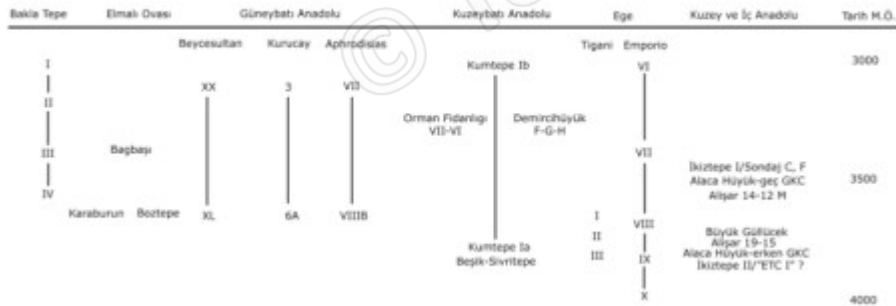
ULF-DIETRICH SCHOOP

Beyce Sultan XL-XX. Tabakalar





GEÇ KALKOLİTİK ÇAĞ KRONOLOJİSİ



Categories of domestic architecture in the 4th mill. BC

Type 1: Rectangular Houses



Beycesultan



Kuruçay



Kumtepe

Type 2: Elliptic Buildings



Myrina



Poliochni

Type 3: Circular Buildings



Myrina



Bakla Tepe



Poliochni

Type 4: Stone Row Structures

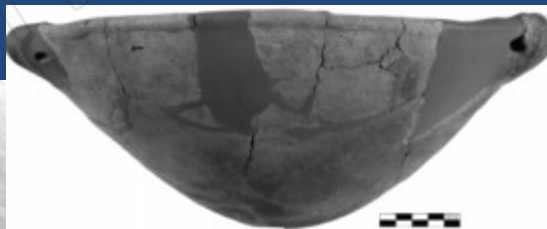
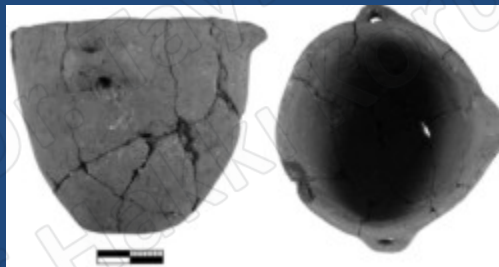


Bakla Tepe



Çukuriçi Höyük

İzmir / Baklatepe



Sample No.	Material	Bakla Tepe Level	BP	BC 2σ
Ox-A 22873	Carbonised grain	Late Chalcolithic 2	4575±28	3496-3117
Ox-A 23011	Carbonised grain	Late Chalcolithic 4	4446±29	3333-2941
Ox-A 23014	Carbonised grain	Late Chalcolithic 3	4546±28	3367-3104

Tab. 1 Radiocarbon results from Bakla Tepe.

Vasıf Şahoğlu,¹ Rıza Tuncel²



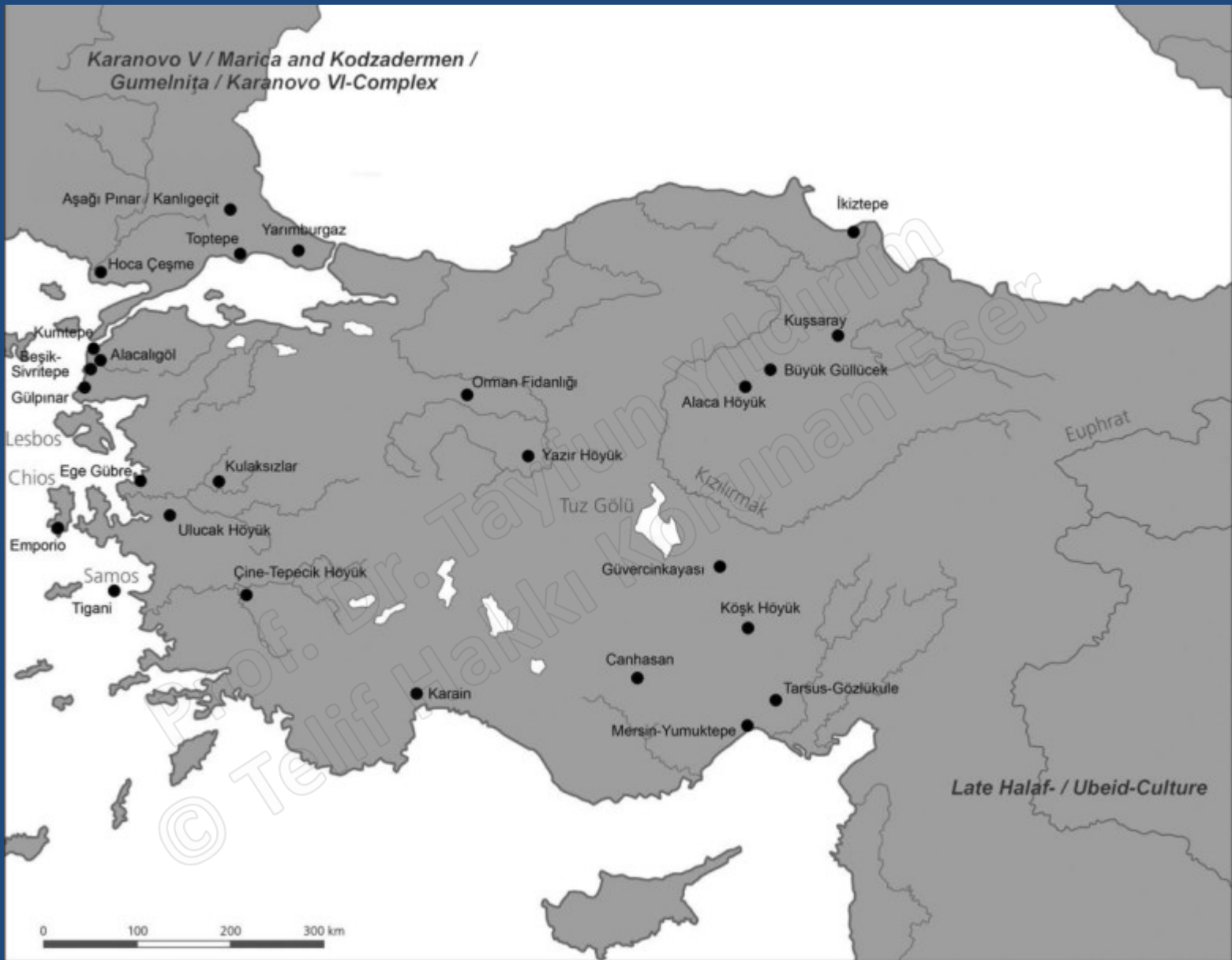


Fig. Orta Kalkolitik Yerleşimleri (Çizim, S. Blum).

Kilia Tipi İdoller

191

Kilia figürinine ait gövde

Kalkolitik dönem, Başlık-Sivritpe, Kars'taki
toruncuk dolgesi.
Mermer
Kırsantı ölçüler 32 cm x 15,5 cm
Çankaya Arkeoloji Müzesi, env. 4525



192

Kilia figürinine ait gövde

Kalkolitik dönem, Katakustar (?)
Mermer
Kırsantı ölçüler 75 cm x 32 cm
İzmir Arkeoloji Müzesi, env. 29402



193



193

Başı eksik Kilia figürini

Kalkolitik dönem, Kulaksızlar (?)
Mermer
Kırsantı ölçüler 3,5 cm x 2,5 cm
İzmir Arkeoloji Müzesi, env. 20675

194-195

İki Kilia figürini başı

Kalkolitik dönem, Alaagaç,
Mermer
Sol 3,2 cm x 2,6 cm; sağ 3,1 cm x 4,2 cm
Manisa Arkeoloji Müzesi, env. 7768 ve 7759

196

Kilia figürini başı

Kalkolitik dönem, Kulaksızlar
Mermer
3,3 cm x 1,5 cm
Manisa Arkeoloji Müzesi, env. 7751

197

İdol

Erken Tunç Çağı
Buluntu yeri bilinmiyor
Mermer
Y, 10,7 cm, K, 0,4 cm
İstanbul Arkeoloji Müzesi, env. 75.150 T



194



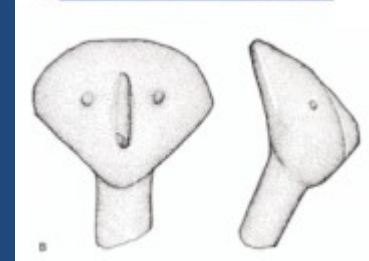
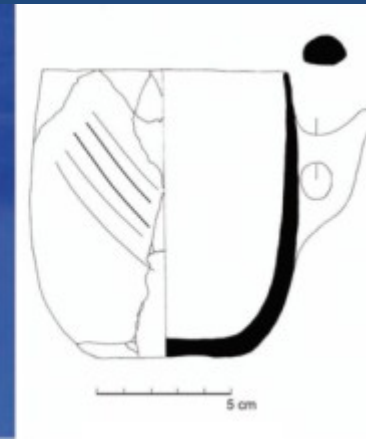
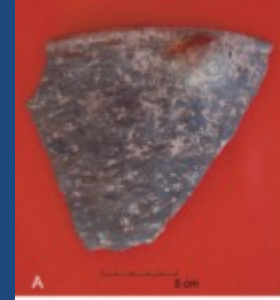
195



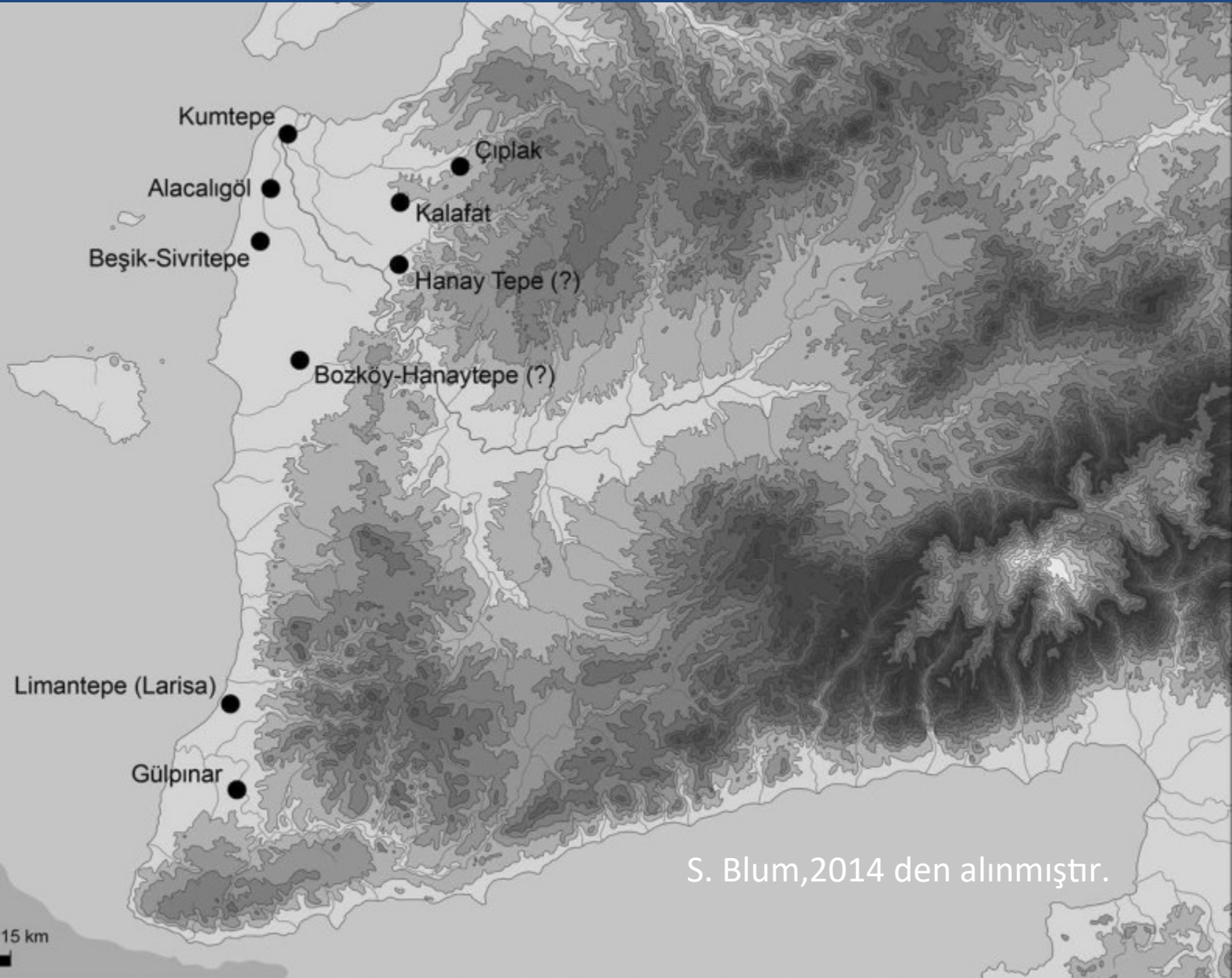
196

Çine Tepecik

Sevinç Günel



Troad (Orta Kalkolitik)



Troad Orta Kalkolitik Seramik (S.Blum, 2014)

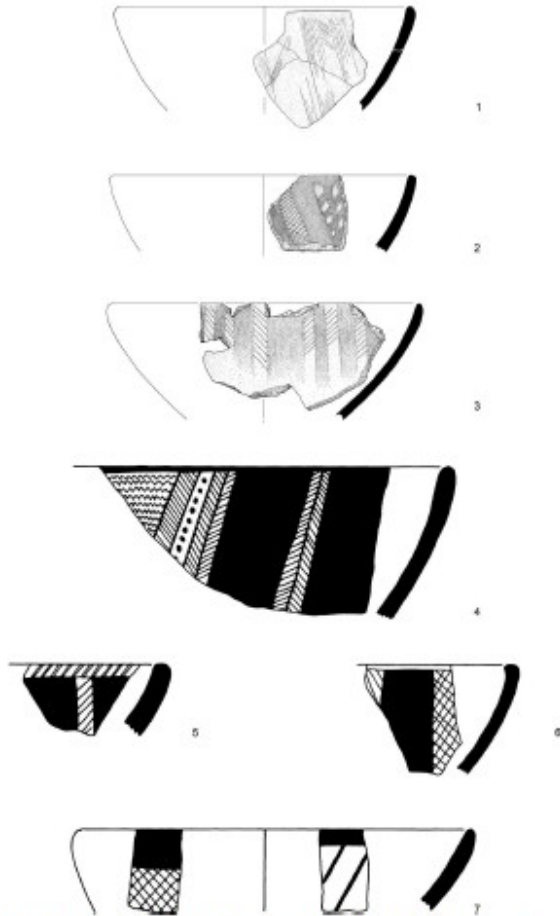


Fig. 4 Middle Chalcolithic bowls from (1-3) Beşik-Sivritepe and (4-7) Gölpinar. Scale 1:4 (Fig. 4.1-3 after 2014, pl. 5.3-5; Fig. 4.4-7 after Takaoglu 2006, fig. 10.24-27).

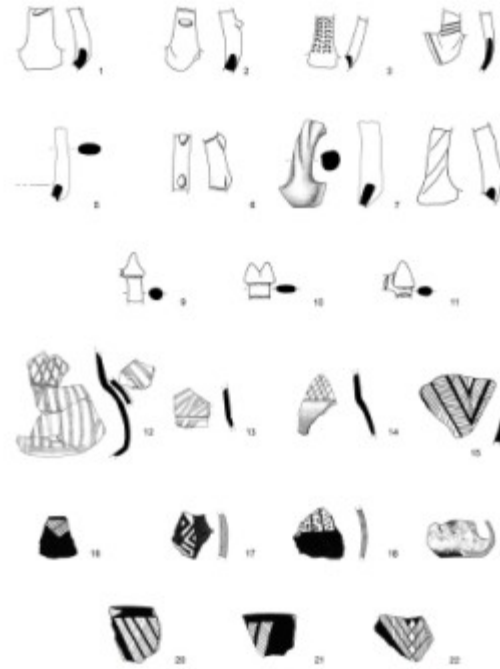


Fig. 5 Knobbed, incised, twisted, and pronged handles from (1-4, 6, 8-11) Gölpinar and (5, 7) Lınaztepe (Larisa); pattern-decorated ceramic from (12-14) Kızıltepe 1A, (15) Gölpinar, and (16-22) Beşik-Sivritepe. Scale 1:4 (Fig. 5.1-4, 6, 8, 9-11, 15 after Takaoglu 2006, figs. 6.1, 2, 4, 5, 9-11, 10.29; Fig. 5.5, 7 after Blum et al. 2012, pl. 16.9-11; Fig. 5.12-14 after Gabriel 2014, pl. 2.2, 4-5; Fig. 5.16-22 after Schoop 2005, pl. 158.16-22).

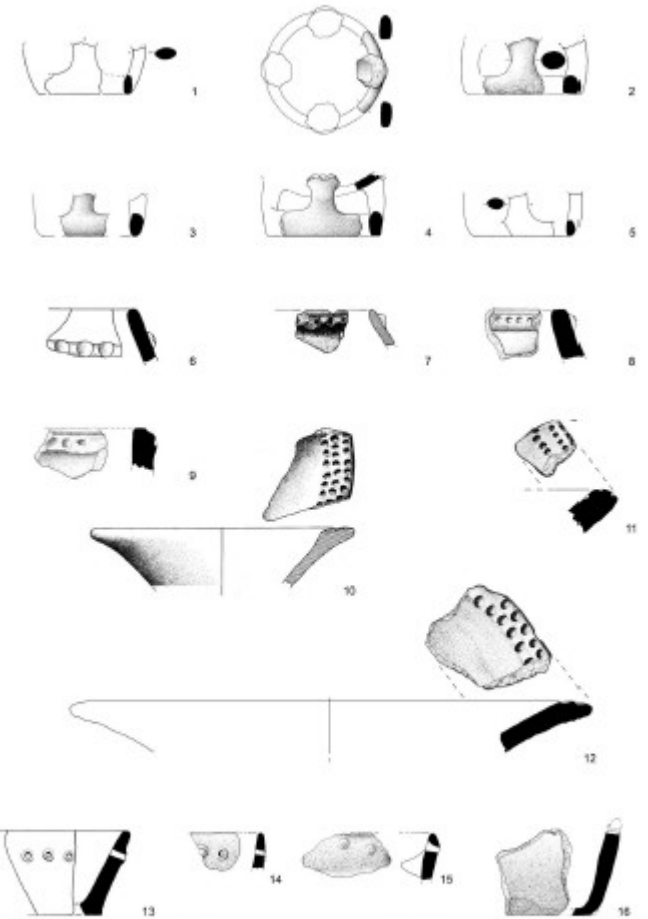


Fig. 6 Ring bases from (1, 3-4) Beşik-Sivritepe, (2) Çırlak, and (5) Gölpinar; open jars with raised decorative bands from (6) Gölpinar and (7-9) Beşik-Sivritepe; flaring bowls with decorated rims and encircling lines of holes from (10) Beşik-Sivritepe and (11-12) Lınaztepe (Larisa); cheese pots from (13) Gölpinar and (14-16) Beşik-Sivritepe. Scale 1:4 (Fig. 6.1, 7, 10 after Schoop 2005, pls. 157.23, 27; 158.11; Fig. 6.2-4, 8-9, 14-16 after Gabriel 2014, pls. 8.3, 5, 10-12; 9.2-3, 10.13; Fig. 6.5-6, 13 after Takaoglu 2006, figs. 9.21, 11.31-32; Fig. 6.11-12 after Blum et al. 2012, pl. 16.1-2).



Pl. 11. Akbaşlıtepe (Scale 1:1) (Illustration: S. Blum).

Bölgeler arası karşılaştırmalı kronoloji

Table 4.2. The Chronology of Regional Settlement Sequences Using Approximate Timeframes Based on Calibrated ¹⁴C and Dendro Dates in a System (Ranges that Use the OxCal v3.10 Calibration Chart (Ramsey 2009) and the IntCal14 Calibration Curve (Reimer et al. 2013))

Period	Aegean Littoral	West-Central	Central	Gilich	East	Southeast
3500-3000 B.C.E. Late Chalcolithic Middle	Burntaya 3a-3b Bağlıtepe Bağlıtepe	Kuşçu Höyük	Çadır Höyük 3a-c Kuş Höyük Güvercinakaya Yarıklıtepe Çatalhöyük Tuzluca	XXII Yarıklıtepe XXVI	Aoventepe VI Aoventepe VII Aoventepe VIII Doğumtepe	Araç B-2 Karan Höyük Ercişli A-2 Kızıncık Kuşçulu 2
3000-2500 B.C.E. Early Chalcolithic	Ulucak	Menitepe 1 Ilıpınar X-VI Akköprühöyük Etilitepe Tuzluk Ulucak V-I Burntaya 2a-2g Etilitepe <i>contemporary phases</i>	Çadır Höyük 1d-e Doğ Höyük Çatalhöyük W Canhasan I c Canhasan I ab Güvercinakaya	XXVII Yarıklıtepe XXIV	Gilichindyan Burntaya	Araç C-D Karan Höyük Kızıncık Akközü IV

Table 4.3. Calibrated Radiocarbon Dates for Neolithic and Chalcolithic Sites

Region	Site	No. of Samples	Site Strata	Dates cal B.C.E.E	Source(s)
Aegean	Ulucak	4	VI-IVb2	6040-5730	Weninger (2007)
	Ilıpınar	66	X-VI	6000-5700	
			VI-VA	5700-5500	
			VB	5500-5450	
West Central Plateau	Menitepe	9	Level 3	6440-6000	Thissen (2006)
	Hacılar	4	Level 1	5730-5520	
			IX-VI	6240-6060	
	Höyük	6	Shrine Phase	6050-5730	
		Bademağacı	1	Level 8	
	Çadır Höyük	7	Levels 4A-1	6450-6100	
		8	Phase 1d-e	5220-4940	
			Phase 1c	4520-4480	
			Phase 1b-a	3780-3360	
	Central Plateau	Köşk Höyük	9 Dendro		
Güvercinakaya		10		5200-4850	
Canhasan I		8	2B	5700-5400	
		4 Dendro			
Canhasan III		16		7600-6650	
Çatalhöyük East		112		7460-6770	
		10 Dendro			
Suberde		5	Level III	7460-6770	
Pınarbaşı B		2		6400-5920	
Pınarbaşı A		3		8540-8230	
Kaletepe	3		8300-8000		
Ayıklı Höyük	47		8200-7500		
Musulur	10		7570-7300		

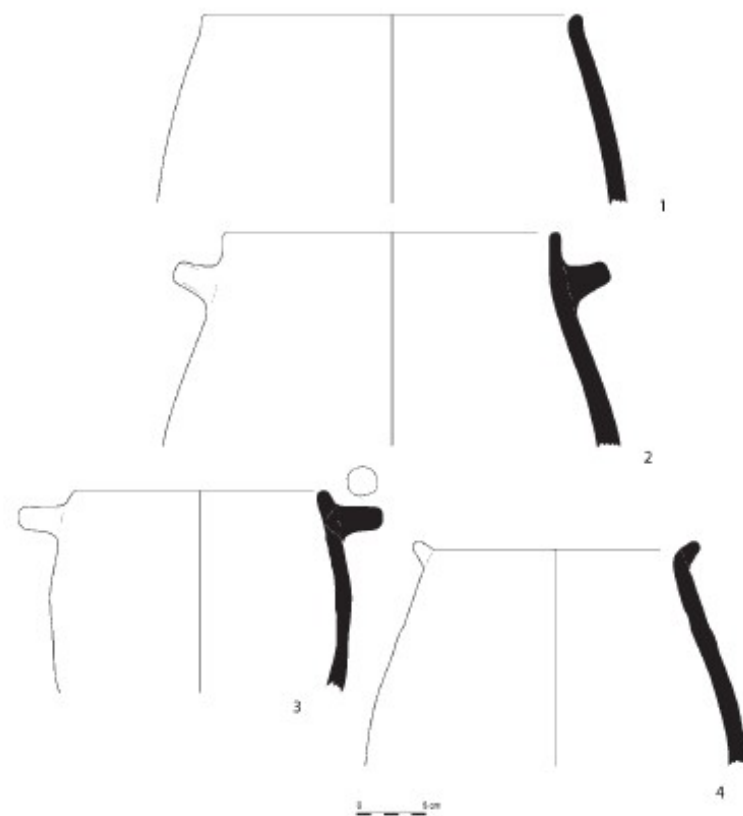
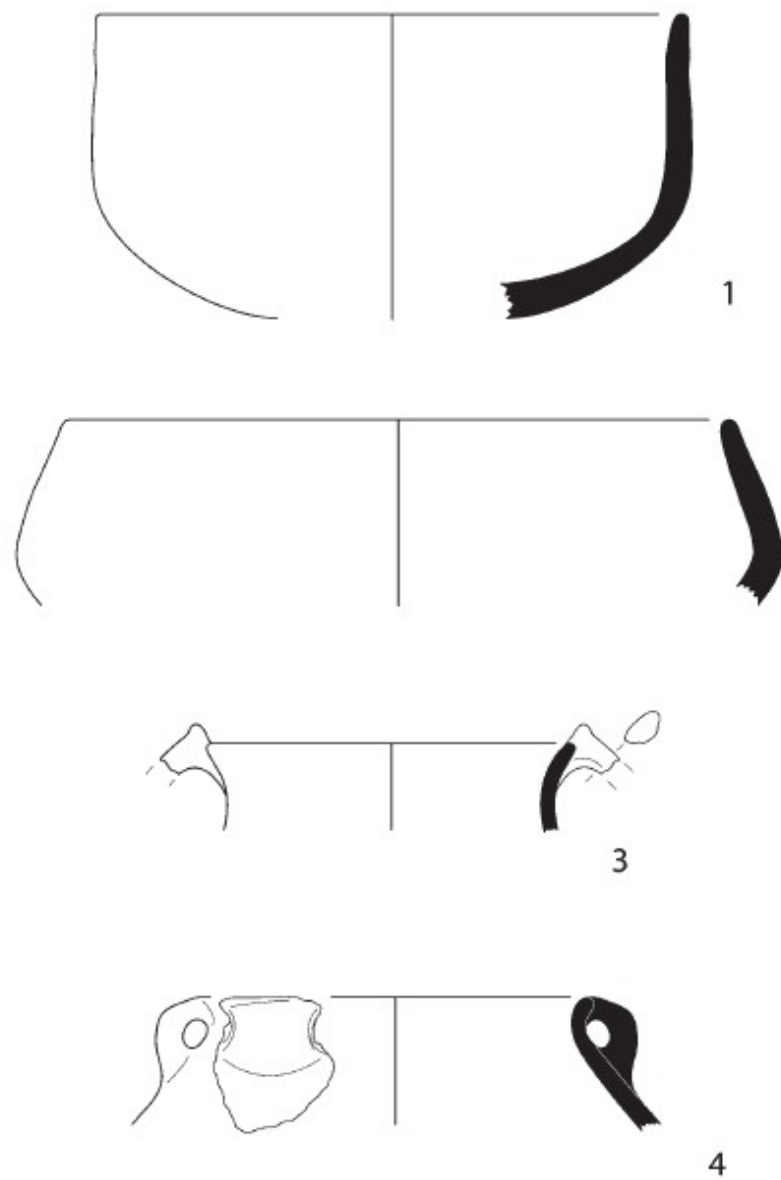
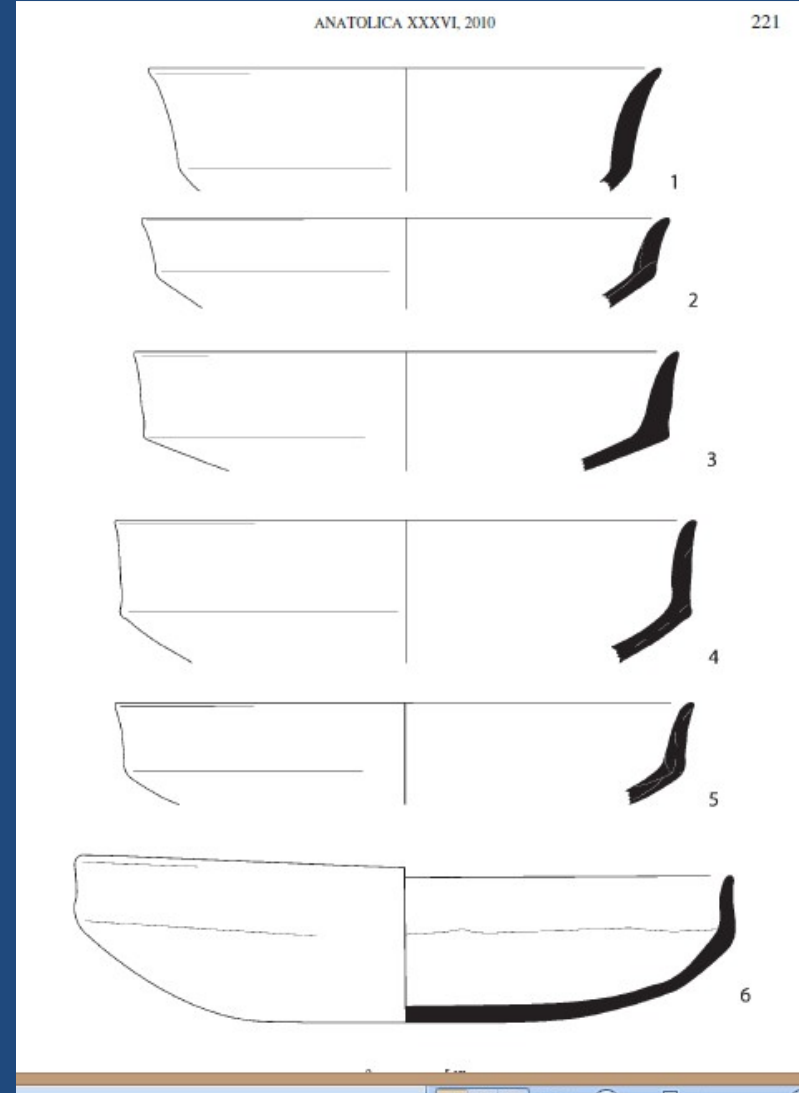
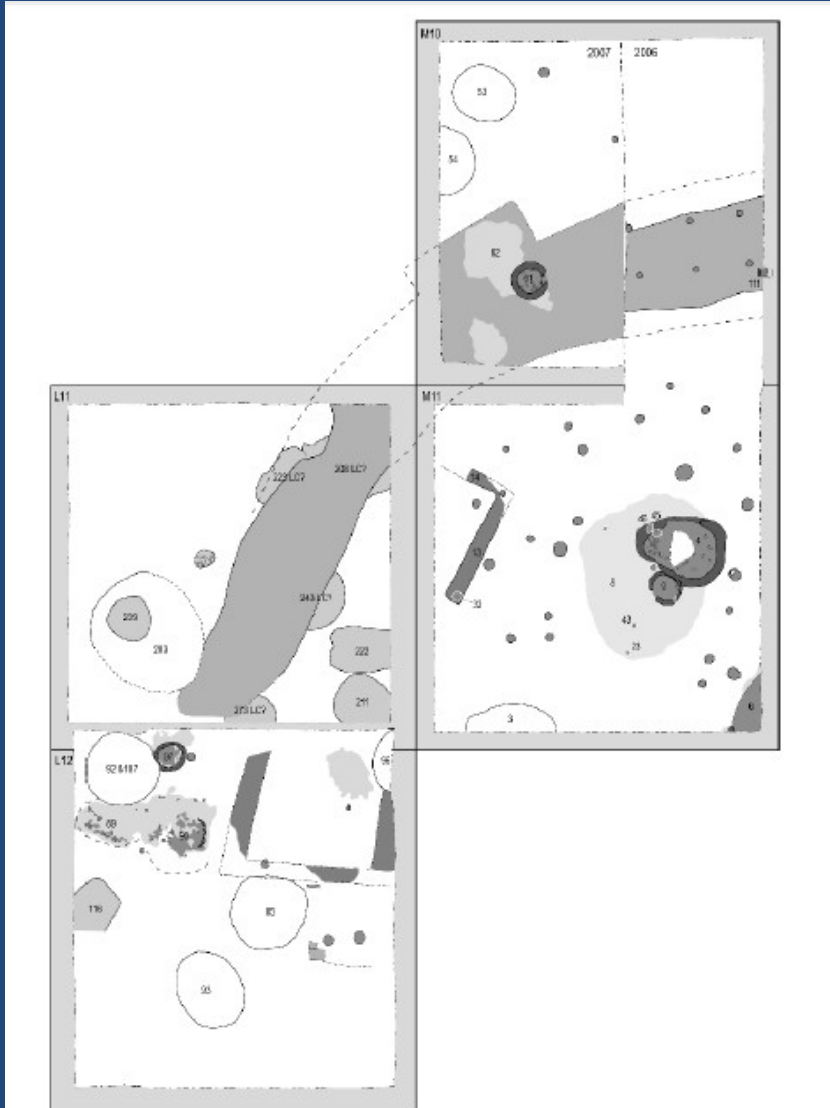


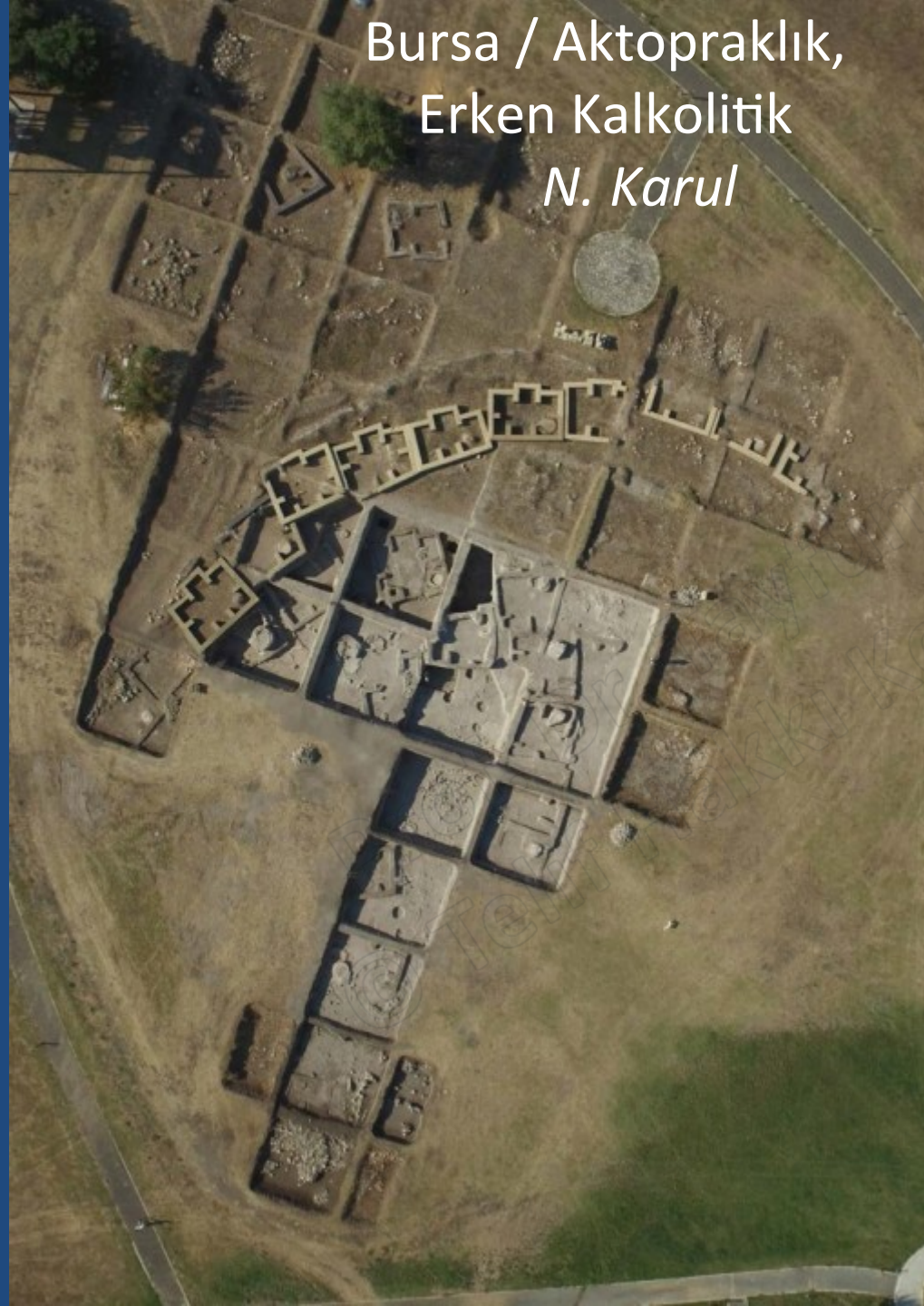
Figure 11: Barcın Höyük, Coarse Ware; 1-4 pots.

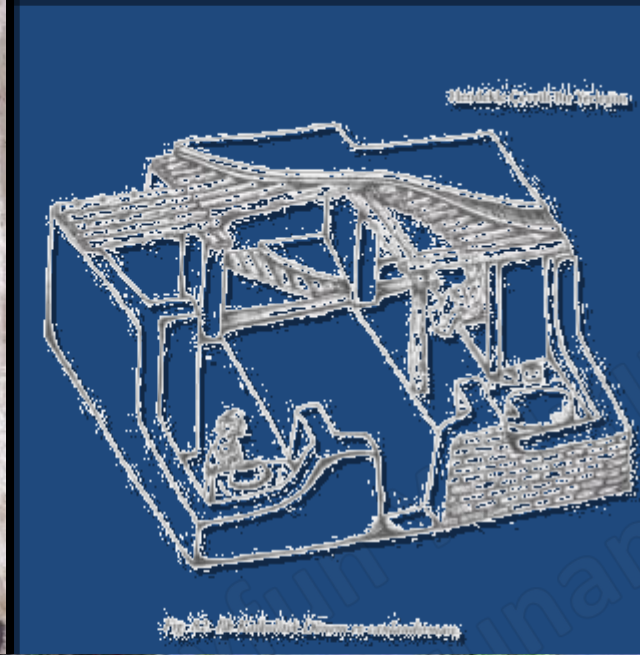


Barçın Höyük / Geç Kalkolitik



Bursa / Aktopraklık,
Erken Kalkolitik
N. Karul





AKTOPRAKLIK

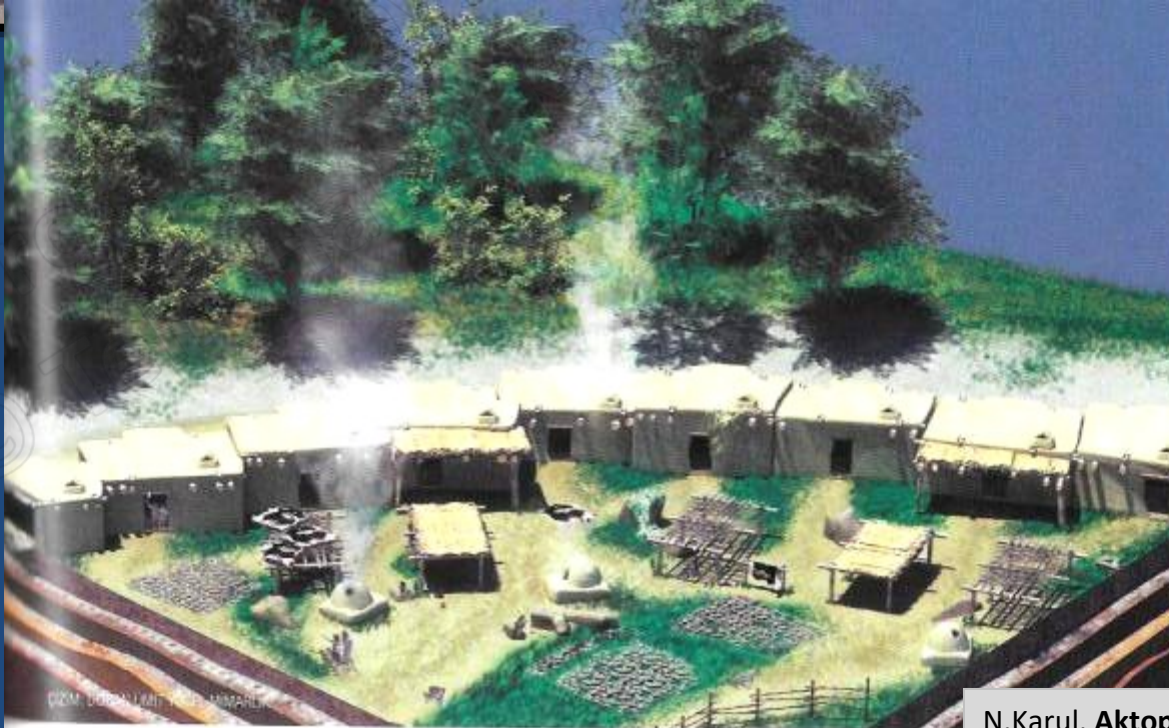
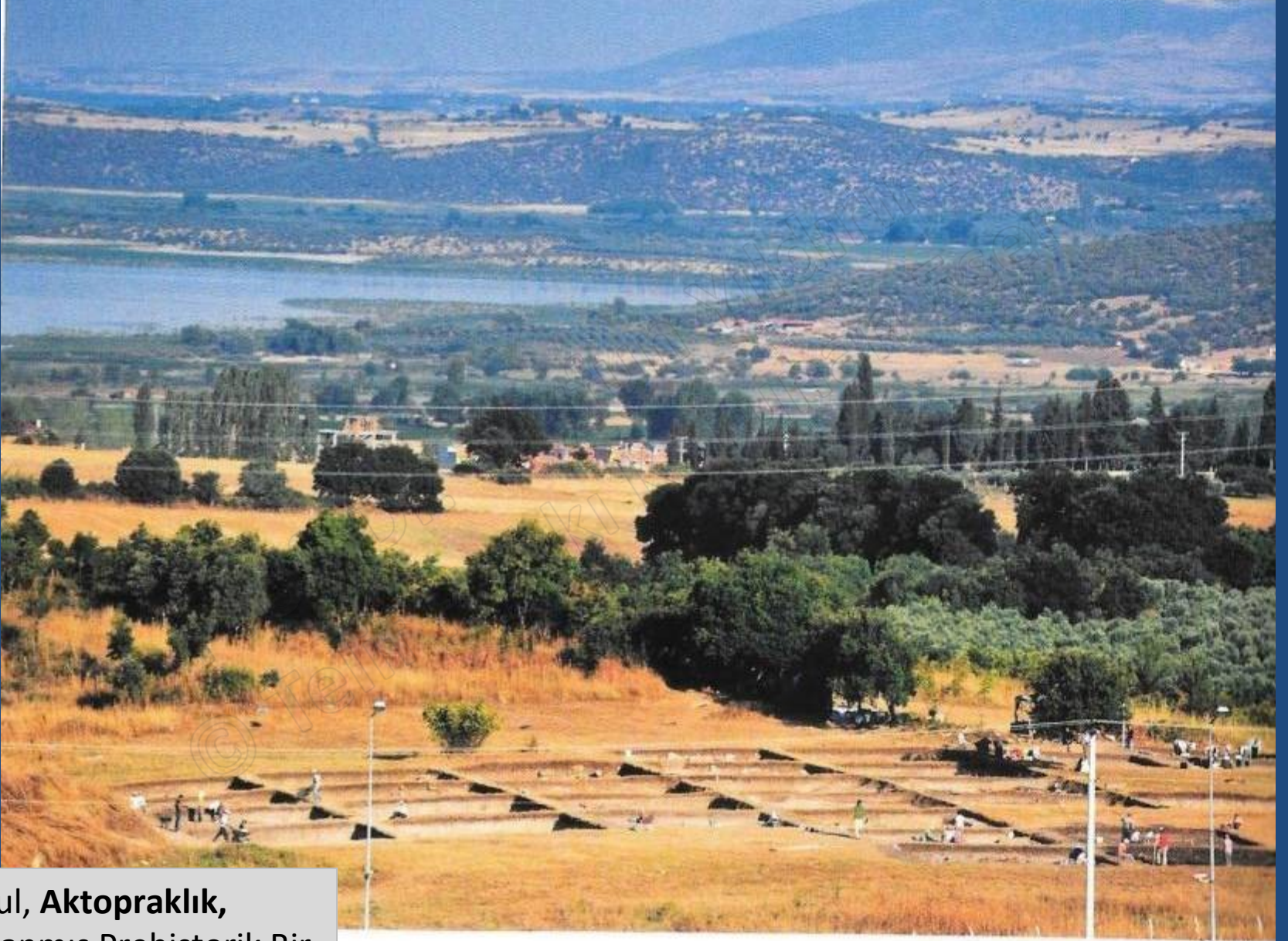


Fig. 109. İlk Kalkolitik Dönem yerleşimi canlandırma denemesi

N.Karul, **Aktopraklık**, Tasarlanmış
Prehistorik Bir Köy, İstanbul 2017

Aktopraklık



N.Karul, **Aktopraklık**,
Tasarlanmış Prehistorik Bir
Köy, İstanbul 2017

Fig. 57. Aktopraklık Höyük B alanı ve Ulubat Gölü.

N.Karul, **Aktopraklık**, Tasarlanmış Prehistorik Bir Köy, İstanbul 2017



Fig. 58. Aktopraklık Höyük İlk Kalkolitik Dönem tabakaları çanak



Fig. 63. Aktopraklık Höyük İlk Kalkolitik Dönem tabakalarında bulunan insan ve hayvan benekçikleri

Aktopraklık



Fig. 18 - Site B, a group of vessels from the Chalcolithic layer.



Fig. 19 - a: Site B, impress-decorated sherds from the Chalcolithic layer; b: Site B, red-slipped sherds from the Chalcolithic layer.



Fig. 23 - Site B, marble bracelets from the Chalcolithic layer.

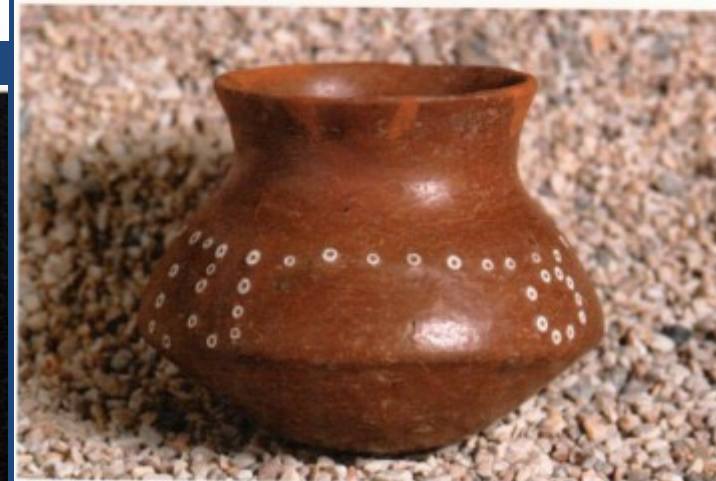


Fig. 20 - Site B, a red slipped pot decorated with limestone bead inlays recovered with the burial in the ditch.

Kalkolitik Mezarlar ve ölü hediyeleri



Fig. 5 - Site C, a sub-floor double burial from the Chalcolithic cemetery.



Fig. 6 - Site C, a burial in contracted position with burial gifts including marble bracelets still in situ from the Chalcolithic cemetery.



Fig. 7 - Site C, vessels found together with the Chalcolithic burials.



Fig. 25 - Site B, a celt found set in a bone socket from the Chalcolithic layer.



Aktopraklık



Fig. 27 - Site B, clay figurines from the Chalcolithic layer.



Fig. 21 - Site B, obsidian bullet cores from the Chalcolithic layer.



Fig. 28 - Site B, bone tools from the Chalcolithic layer.

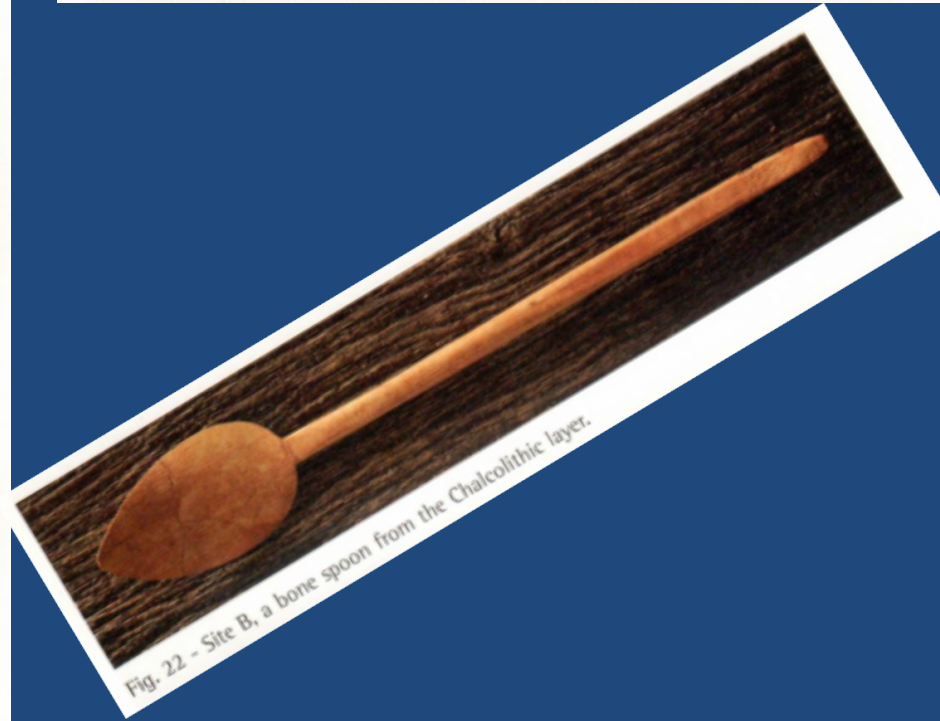


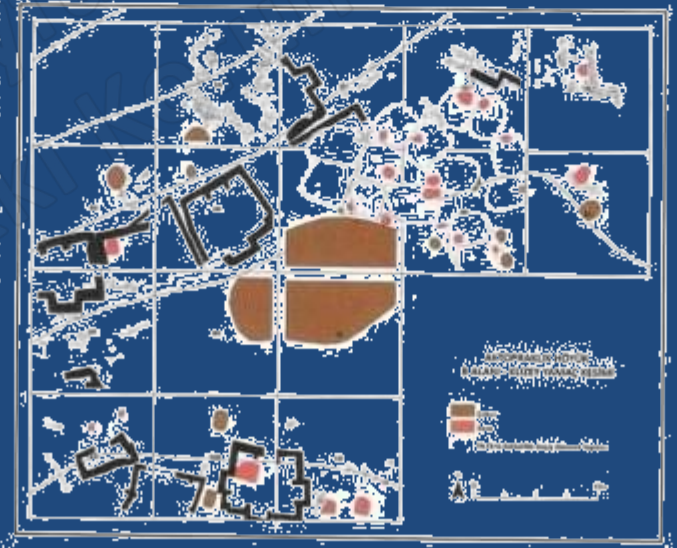
Fig. 22 - Site B, a bone spoon from the Chalcolithic layer.



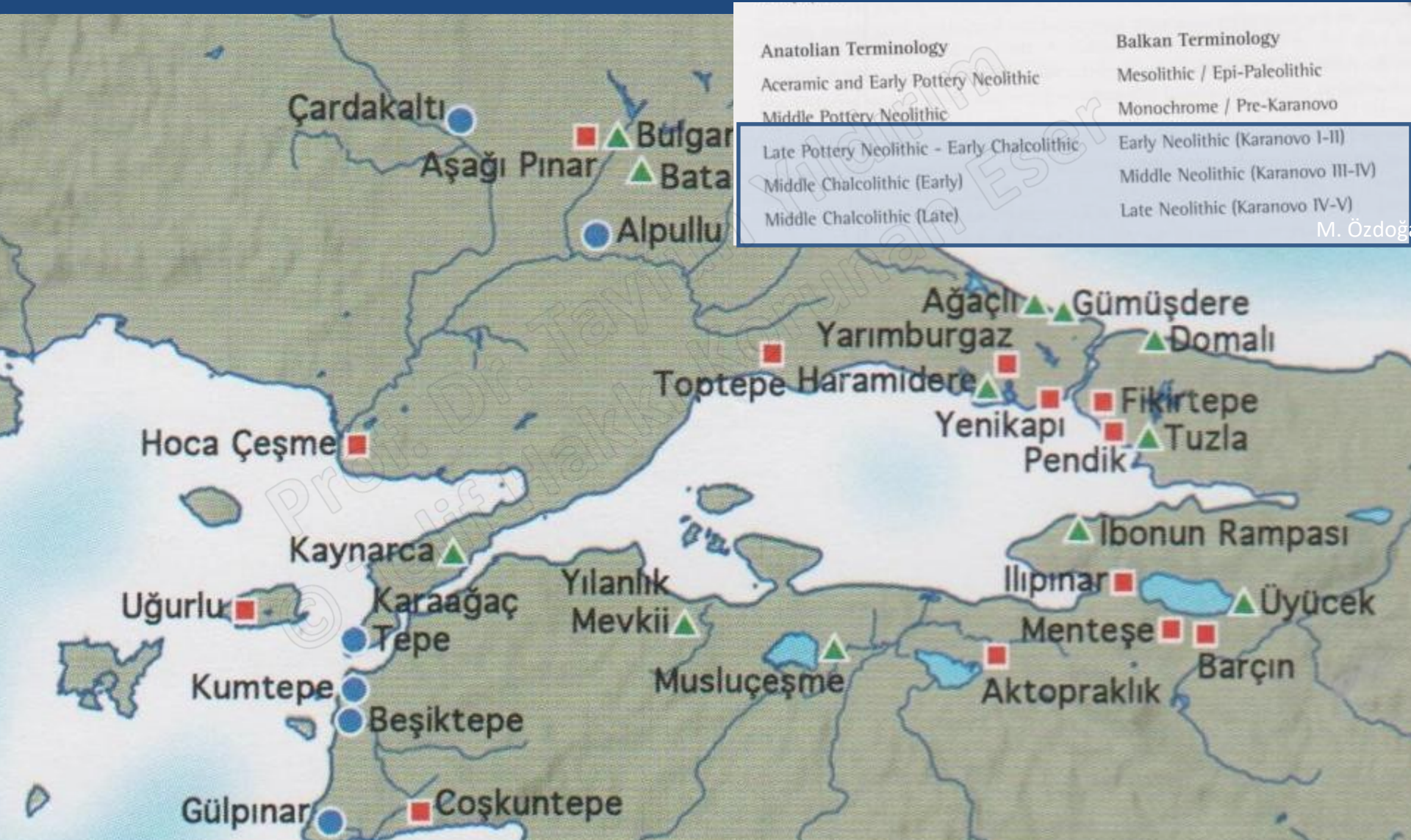
Fig. 72. Bugüne kadar sadece çukurlarda karşılaşılan Orta Kalkolitik Dönem çanak çömleği, özellikle içi beyaz macun ile doldurulmuş kazıma bezekleri ile ayırt edilmektedir.

Fig. 73. Orta Kalkolitik Dönem çanak çömleği, özellikle içi beyaz macun ile doldurulmuş kazıma bezekleri ile ayırt edilmektedir.

Fig. 74. Orta Kalkolitik Dönem çanak çömleği, özellikle içi beyaz macun ile doldurulmuş kazıma bezekleri ile ayırt edilmektedir.



Marmara Bölgesi Neolitik ve Kalkolitik Terminolojisi



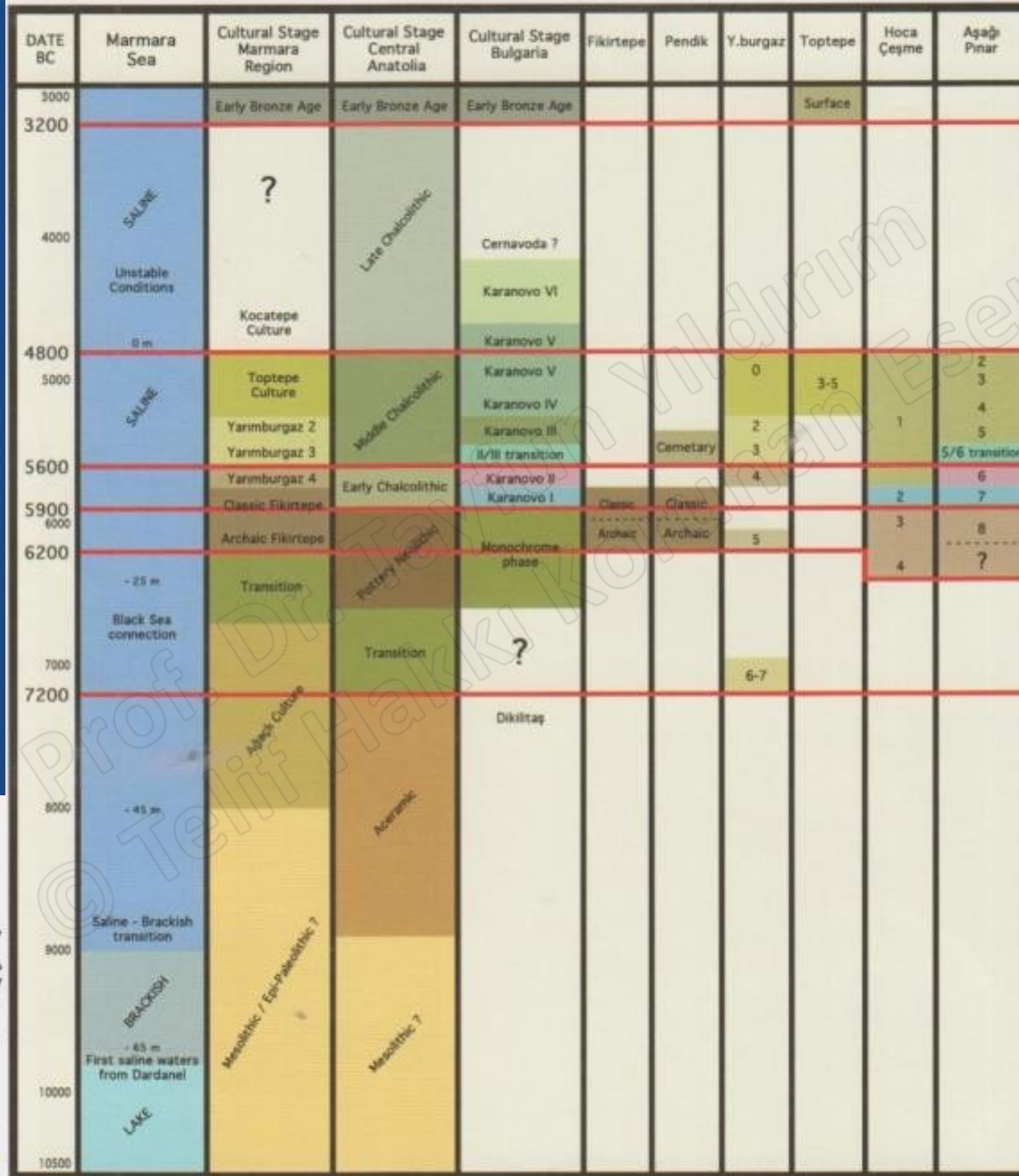


Fig. 171 - A tentative synchronization chart of the Marmara Region.

THE NEOLITHIC IN TURKEY
 NEW EXCAVATIONS & NEW RESEARCH
 Edited by:
 MEHMET ÖZDOĞAN
 NEZİH BAŞGÖLEN
 PETER KUNIHOLM

NORTHWESTERN TURKEY AND ISTANBUL

Kronolojik Tablo

PERIODS	Mesolithic / Epi-Paleolithic		Pottery Neolithic		Early Chalcolithic				Middle Chalcolithic				
DATES	7500	7000	6500	6000	5500				5000	4500 cal. BC			
Uğurlu			V		IV		III			NORTHWESTERN TURKEY			
Caglutepesi													
Altınraklık				Site C		Site B							
Eğner					X	IX	VIII	VII	VI		V	IV	
Hontepesi													
Bazın			VIIc-VIc	VIIc - VIIc									
Yarıkapı					Archaeo Fikortepesi	Classical Fikortepesi	Yarıburgaz Phase	Topkapı Phase					
Fikortepesi					Archaeo	Classical							
Pendik					Archaeo Fikortepesi	Classical Fikortepesi	Camariya						
Yarıburgaz		7-6		5		4	3	2	1		0		
Topkapı									3-5				
Hoca Çeşmesi				4	3	2		1					
Aşağı Pınar				7	8	7	6	VII	5		4	3	2
DATES	7500	7000	6500	6000	5500				5000		4500 cal. BC		
PERIODS	Mesolithic / Epi-Paleolithic		Pottery Neolithic		Early Chalcolithic				Middle Chalcolithic				

The chronological table has been put together according to the assessments of the authors of the individual papers.

YENİKAPI / İSTANBUL

YENİKAPI



Fig. 2 - Pottery from the Chalcolithic period (photo by Süleyman Kara).

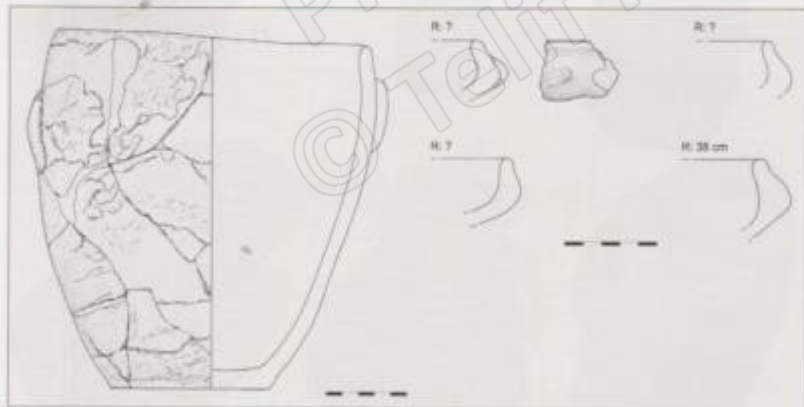


Fig. 3 - A Chalcolithic vessel and various knob-handles.

Anatolian Terminology

Aceramic and Early Pottery Neolithic
 Middle Pottery Neolithic
 Late Pottery Neolithic - Early Chalcolithic
 Middle Chalcolithic (Early)
 Middle Chalcolithic (Late)

Balkan Terminology

Mesolithic / Epi-Paleolithic
 Monochrome / Pre-Karanovo
 Early Neolithic (Karanovo I-II)
 Middle Neolithic (Karanovo III-IV)
 Late Neolithic (Karanovo IV-V)

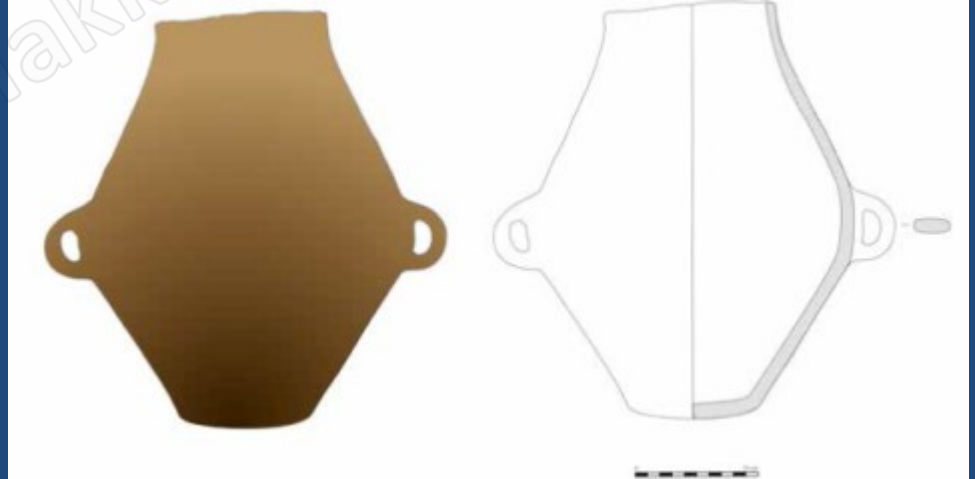
Zeynep KIZILTAN – Mehmet Ali POLAT



İstanbul / Hipodrom



İnsan Yüzü Betimli Çömlek, Hipodrom, Geç Kalkolitik Çağ, Pişmiş Toprak , Ş. Dönmez'den



Çömlek, Hipodrom, Geç Kalkolitik Çağ, Pişmiş Toprak. Ş.Dönmez'den.

TOPTEPE (Marmara Ereğlisi) Orta Kalkolitik

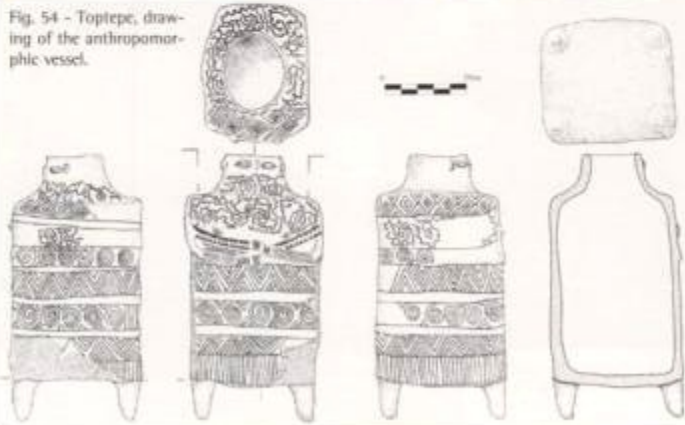
Mehmet ÖZÜĞAN

Donem sera



Fig. 53 - Toptepe, the anthropomorphic vessel of Layer V.

Fig. 54 - Toptepe, drawing of the anthropomorphic vessel.



TOPTEPE KAZI ARŞIVI

TOPTEPE (Marmara Ereğlisi) Orta Kalkolitik Dönem

Tarihöncesi Dönemlerde
Anadolu ile Balkanlar Arasındaki
Kültür İlişkileri ve Trakya'da
Yapılan Yeni Kazı Çalışmaları

Mehmet ÖZDOĞAN

MARMARA REGION



123

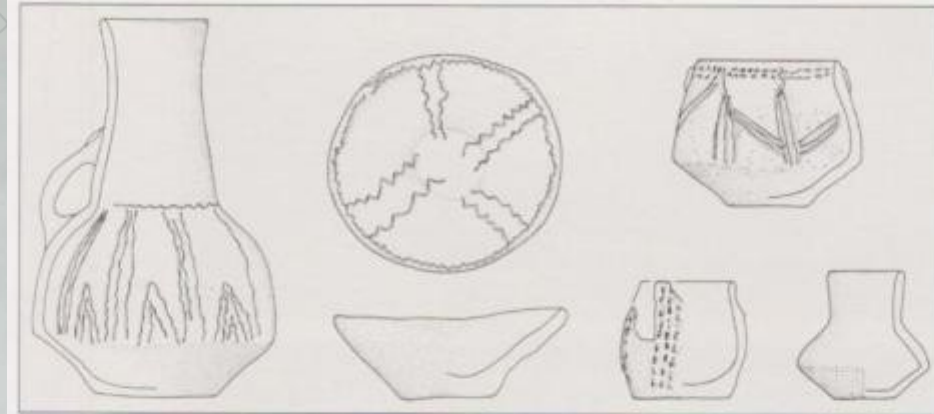


Fig. 55 - Toptepe, typical decorated vessels.



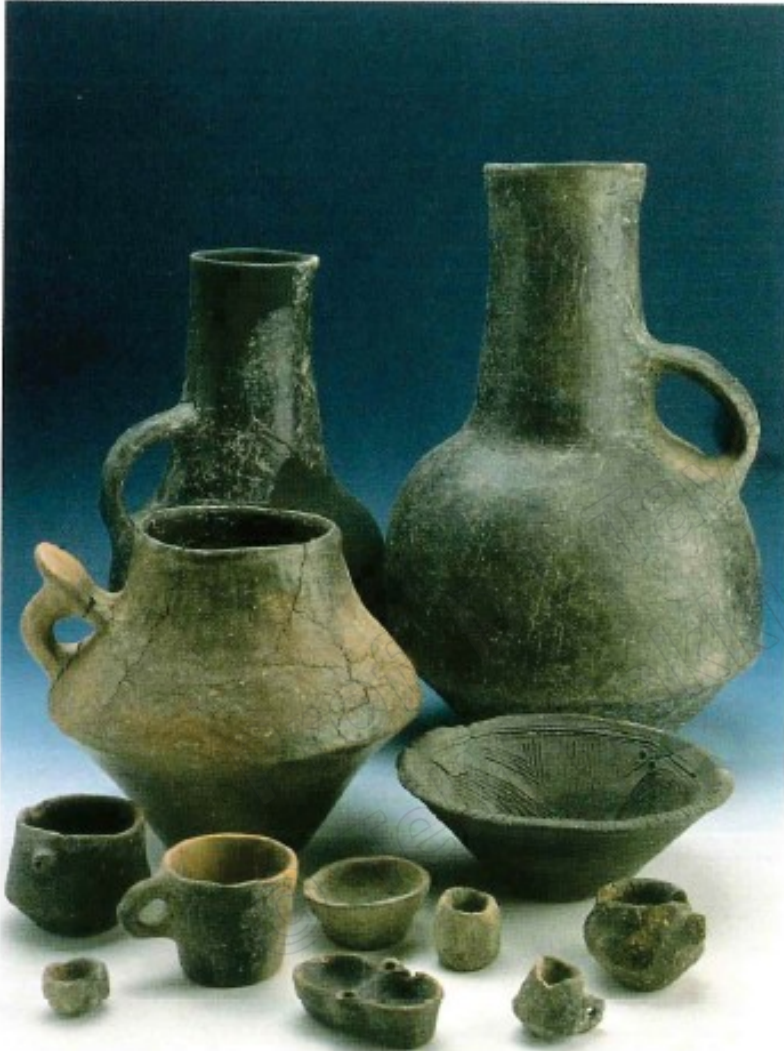
Fig. 56 - Toptepe,
typical jar with wavy
incised decoration.

Fig. 57 - Toptepe, bone objects.

Kırklareli / Aşağı Pınar Kalkolitik (5-1.Kültür Katları)



Fig. 103 - Aşağı Pınar, plan of the northern section.



Resim 13: Aşağı Pınar kazısı.
3. ve 4. tabaka çanak çömleği



Resim 14: Aşağı Pınar kazısı.
3. tabakadan bir kap



Resim 18: Aşağı Pınar kazısı.
2. tabakada bulunan çift gövdeli kap.



Resim 19: Aşağı Pınar kazısı. 2. tabakada
bulunan oturur durumdaki heykelcik.



Fig. 163 - Aşağı Pınar, figurines of Layers 2 - 4.



Fig. 164 - Aşağı Pınar, the so-called "Vinča" face depictions, Layers 3 and 4.

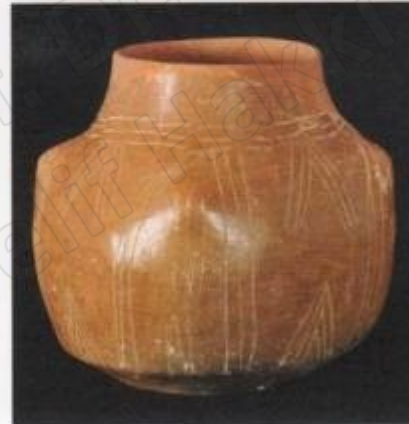


Fig. 166 - Aşağı Pınar, vessels of Toptepe type in Layer 3.

Fig. 165 - Aşağı Pınar, a typical vessel of Layer 3.



Resim 17: Aşağı Pınar kazısı, 2 ve 3. tabaka çanak çömleğinden örnekler.



Resim 15: Aşağı Pınar 3. tabaka heykelciklerinde bir örnek



Resim 16: Aşağı Pınar kazısı, 2. tabaka heykelciklerinden bir örnek.

