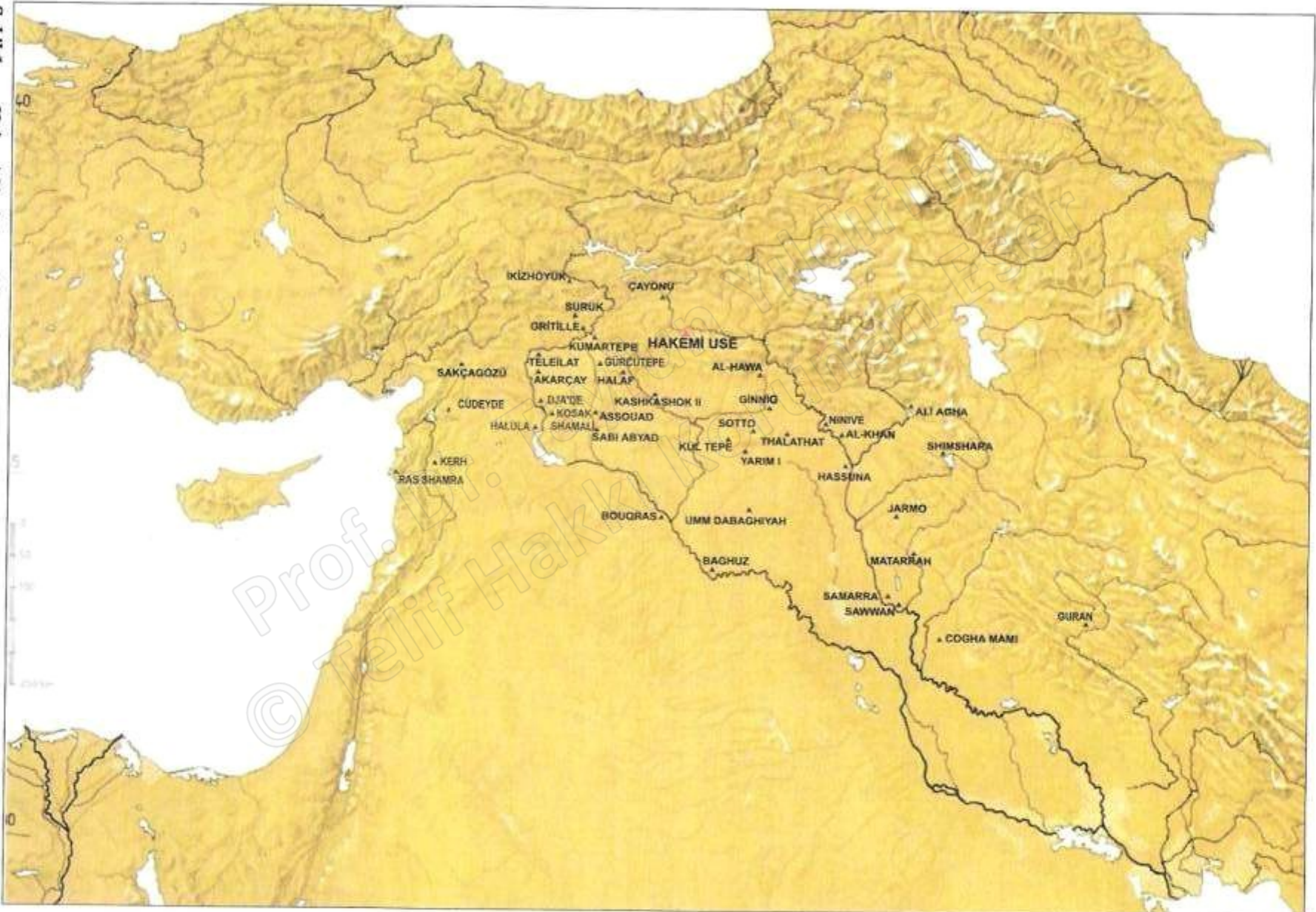


# Güneydoğu ve Doğu Anadolu, Etkileşimler.

Sekil 1  
Hakemi Use'nin çağdaşı olan Geç Neolitik yerleşimler

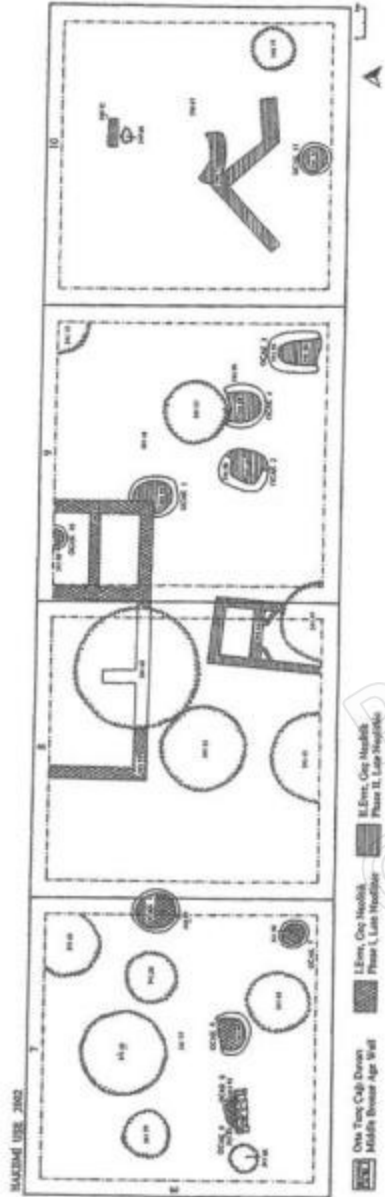


Halil Tekin

Yukarı Mezopotamya'da Hassuna, Samarra, Halaf Yayılımı

# Hakemi Use

## Yukarı Dicle Vadisinde Bir Geç Neolitik Yerleşimi



Hakemi Use 2002 Yılı Kazısı İlk Sonuçları  
Preliminary Results of the 2002 Excavations at Hakemi Use



Şekil 8 Geç Neolitik II. Evre, taş damga mühür  
Figure 8 Late Neolithic, Phase II, stone stamp seal



Şekil 9 Geç Neolitik II. Evre, kil kadın figürünü  
Figure 9 Late Neolithic, Phase II, clay female figurine

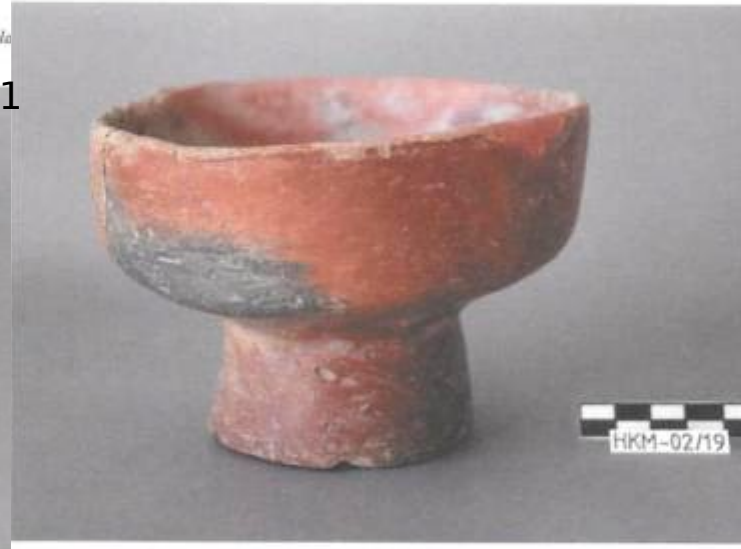


Şekil 10 Geç Neolitik II. Evre, bazalt havan ve havan eli

Hakemi Use 2002 Yılı Kazısı İlk Sonuçları  
Preliminary Results of the 2002 Excavations at Hakemi Use



Şekil 13a Geç Neolitik I. Evre kaideli kap  
Figure 13a Late Neolithic, Phase I, pot with pedestal



Şekil 13b Geç Neolitik I. Evre kaideli kap

Tekin, H. 2011



Şekil 14c Geç Neolitik I. Evre, gri-siyah astarlı seramik  
Figure 14c Late Neolithic Phase I, gray-black slipped ware



Şekil 15a Geç Neolitik I. Evre, standart çizgi bezekli seramik  
Figure 15a Late Neolithic Phase I, standard incision decorated ware

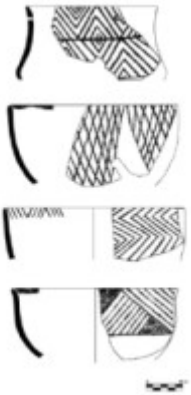
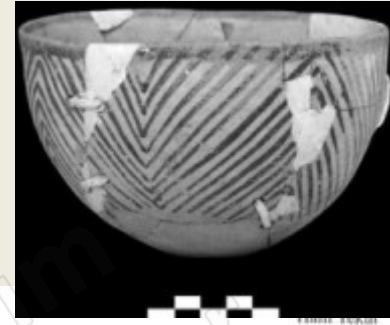
Tekin, H. 2011



Şekil 14d Geç Neolitik I. Evre, gri-siyah astarlı, astar bezemeli seramik  
Figure 14d Late Neolithic Phase I, gray-black slipped, slip decorated ware



Şekil 15b Geç Neolitik I. Evre, standart çizgi bezekli seramik



Şekil 15b Geç Neolitik II. Evre standart boyalı (Hassuna tipi) seramik  
Figure 15b Late Neolithic Phase II, standard painted (Hassuna type) ware

Fig. 16 Orange Flue Ware (Standard Hassuna Painted Ware)



Tekin, H. 2011



Şekil 16a Geç Neolitik I. Evre, Samarra tipi seramik  
Figure 16a Late Neolithic, Phase I, Samarran type pottery

Şekil 20b Geç Neolitik II. Evre "beşik" veya "mey" parçaları  
Figure 20b Late Neolithic, Phase II, Hassin Deep bowls



Şekil 18e Geç Neolitik II. Evre standart boyalı (Hassuna tipi) seramik





# Girikihacıyan

## Diyarbakır Ergani Ovasında Bir Halaf Yerleşimi

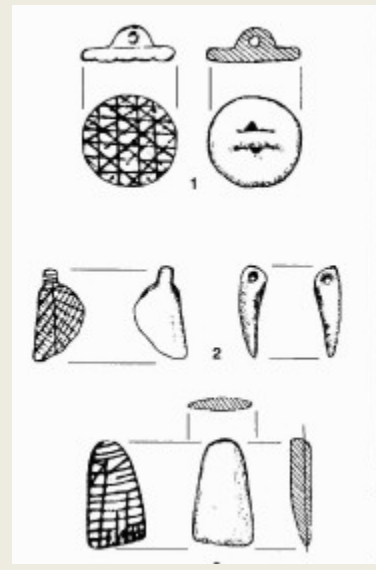
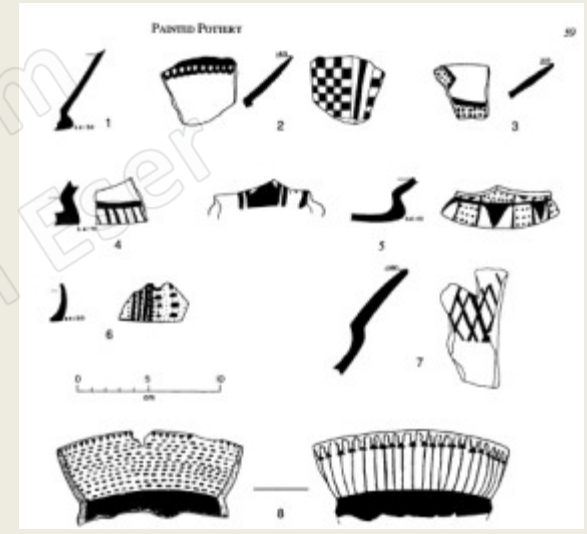
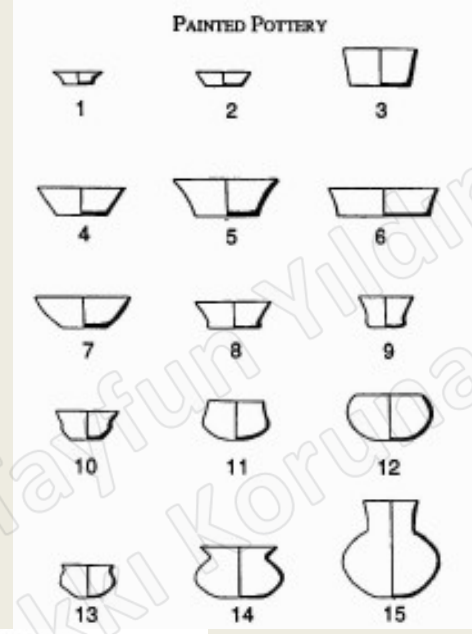
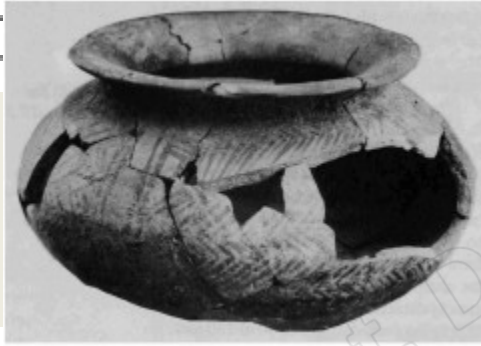
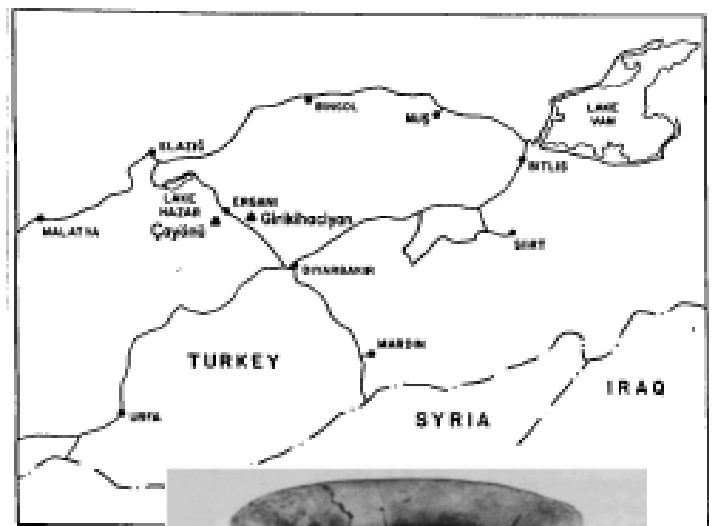


Figure 17. Plan view of architecture and other features in several excavations. Elevations are in cm.

Figure 23. Plan view of architecture and other features in various excavations. Elevations are in cm.

Figure 44. Painted pottery designs on a selection of sherds from the 1970 season.

# Kenantepe / Ubeyd

Bradley J. Parker, Andrew Creekmore, Lynn Swartz Dodd

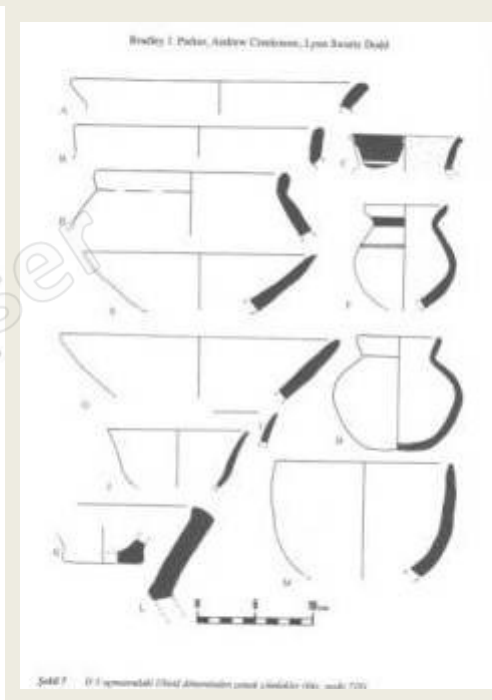
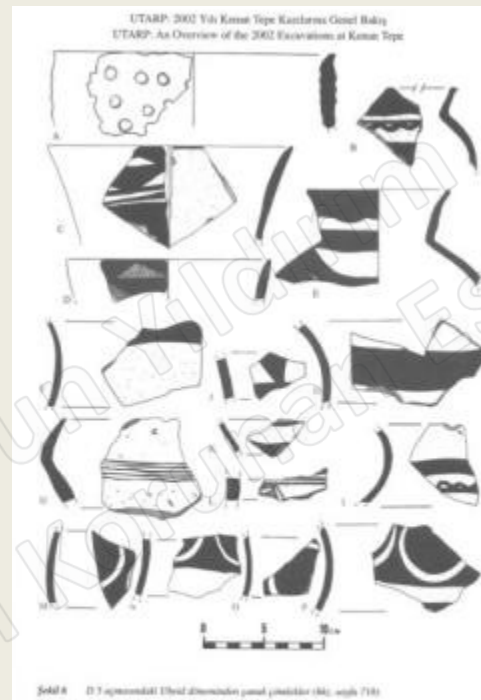
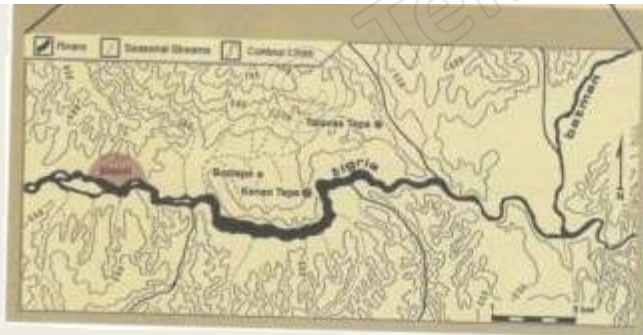


Figure 1. Map of important Ubaid period sites highlighting the location of Kenan Tepe (adapted from Carser & Philip 2010: viii–ix).



Şekil 1  
Kenan Tepe'nin bulunduğu yeri gösteren harita  
Figure 1  
Map showing the location of Kenan Tepe

# FISTIKLI Höyük

## Birecik yakınlarında bir Erken Halaf Köyü



Fig. 1. Regional map, showing the location of Fisticli Höyük.

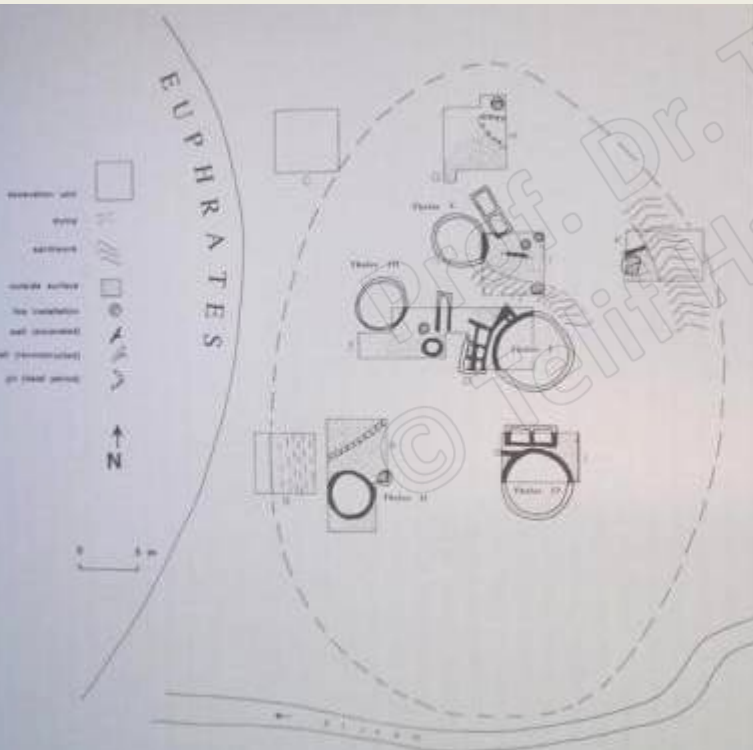


Fig. 2. Plan of excavated area at Fisticli Höyük.



Fig. 14. Straight-sided bowls. Scale 1:3.

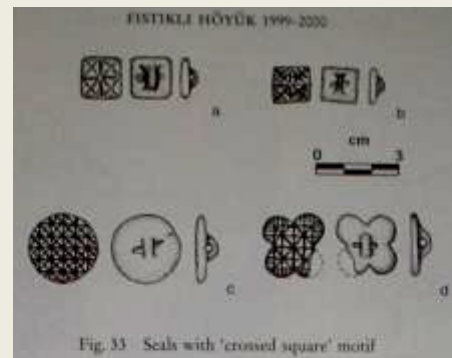


Fig. 35. Scales with 'crossed square' motif.

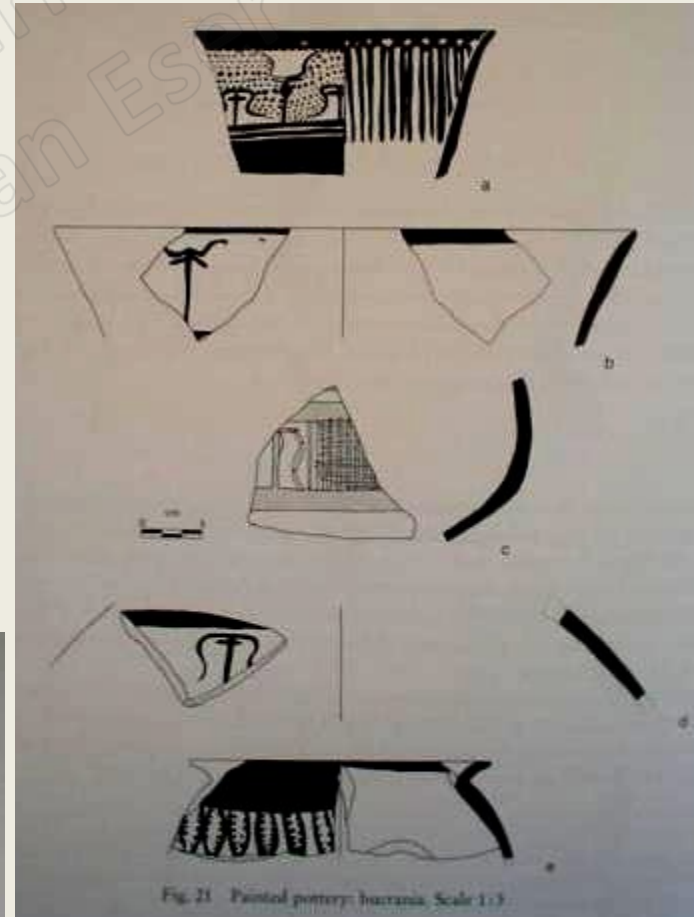
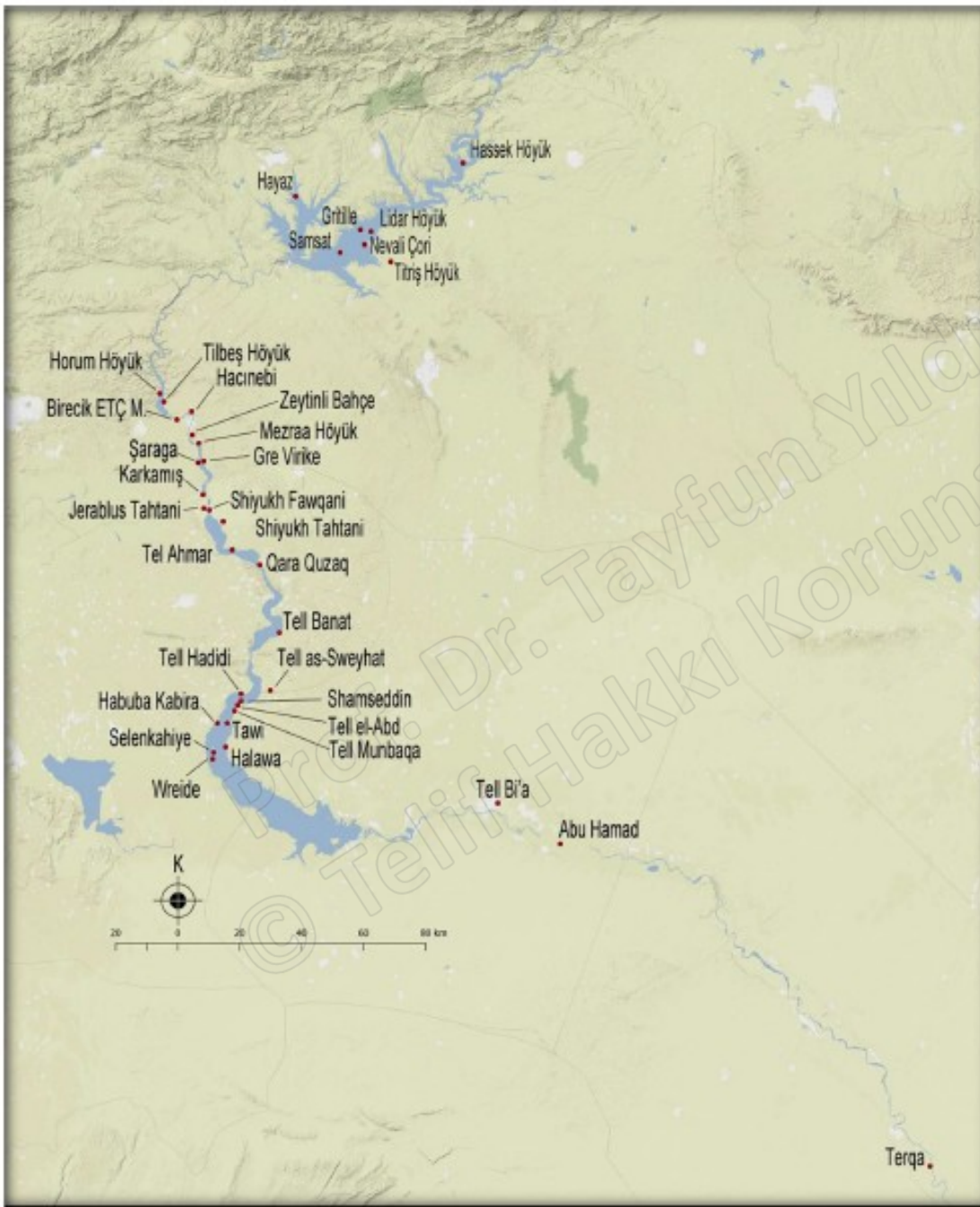


Fig. 21. Painted pottery: Incrasia. Scale 1:3.



## Atatürk ve Birecik/Kargamış Baraj projeleri kapsamında çalışılan önemli yerleşimler



|                         |                |
|-------------------------|----------------|
| Atatürk Barajı          | Hassek Höyük   |
|                         | Gritille       |
|                         | Nevali Çori    |
|                         | Lidar Höyük    |
|                         | Samsat         |
|                         | Hayaz Höyük    |
| Birecik-Karkamış Barajı | Tiriş Höyük    |
|                         | Horum Höyük    |
|                         | Tilbeş Höyük   |
|                         | Hacinebi       |
|                         | Birecik ETÇ M. |
|                         | Zeytinli Bahçe |
|                         | Gre Virike     |
|                         | Şaraga Höyük   |
| Karkamış                |                |

Harita 1: Orta Fırat Havzası (Ekinbaş, 2018: 205, Harita 1)

KARADENİZ



AKDENİZ

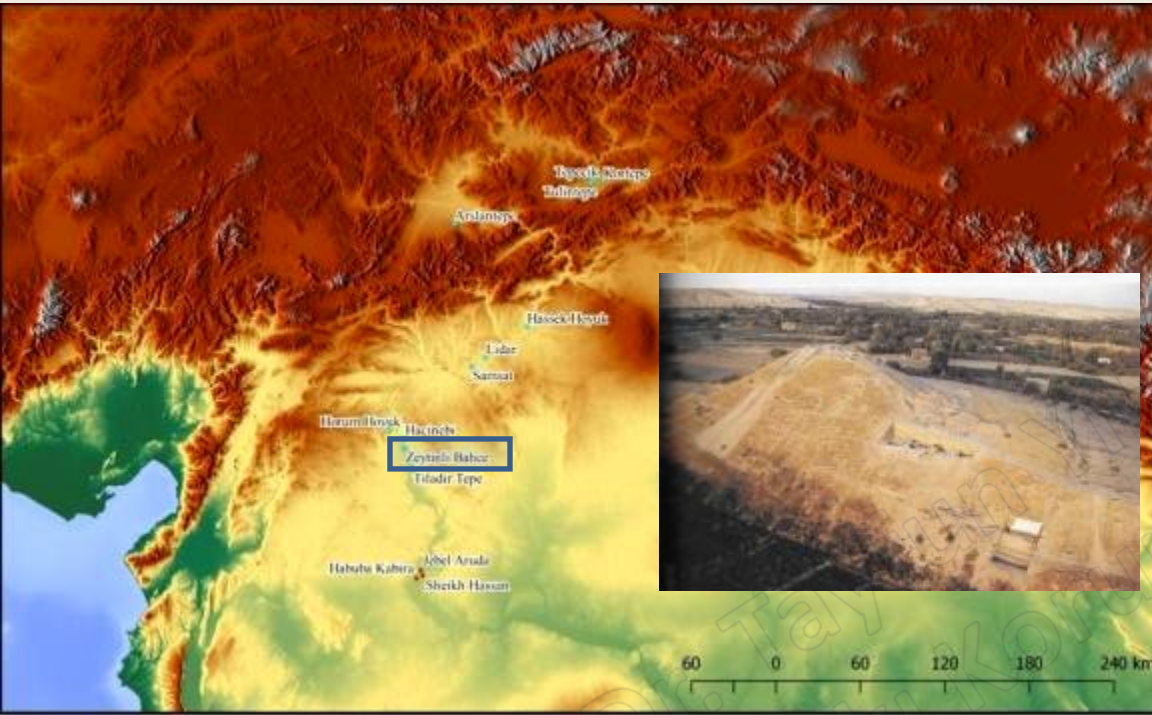


- Gawra Kültürü Sön Kalkolitik Çağ 2. Dönemi
  - Gawra Kültürü ve Kuzey Yukarı Fırat Sön Kalkolitik Çağ 2-3. Dönemi
  - Cezira / Güneydoğu Anadolu Sön Kalkolitik Çağ 3. Dönemi
  - Klasik Cezira / Güneydoğu Anadolu Sön Kalkolitik Çağ Buluntu Yerleri
  - Gawra ve Cezira / Güneydoğu Anadolu Sön Kalkolitik Çağ ve Orta Uruk
  - Orta Uruk Kolonisi
  - Cezira / Güneydoğu Anadolu Sön Kalkolitik Çağ ve Orta Uruk
  - Kuzey Yukarı Fırat Sön Kalkolitik Çağ Kültürleri
  - Amik F. Kültürü
  - Erken ve Orta Uruk Kültürleri
- |  |   |
|--|---|
|  | Gawra Kültürü   |
|  | Cezira / Güneydoğu Anadolu Sön Kalkolitik Çağ Kültürü |
|  | Kuzey Yukarı Fırat Sön Kalkolitik Çağ Kültürü         |
- Amik F. Kültürü
- 0 50 100km

Urak

Susa

# Birecik / Zeytinli Bahçe Orta Uruk kültürel unsurları



Zeytinlibahçe (Urfa) Höyük'teki Araştırmalar: 2002 Kazı Sezonu  
The Investigations at Zeytinlibahçe Höyük (Urfa) the 2002 Campaign



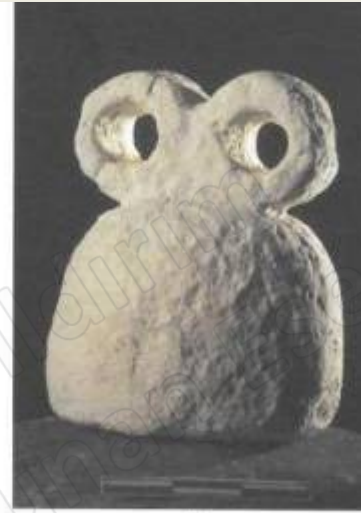
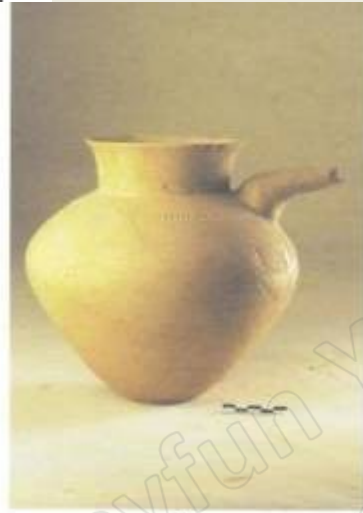
Zeytinli Bahçe, trench B8. Late Chalcolithic domestic structures in the lower levels (LC3)  
M.Frangipane, 2007den.



Şekil 2 Zeytinlibahçe; sondaj B 8: a – Orta Uruk evinin fotoğrafı; b – in situ Orta Uruk keramikleri; c – Orta Uruk odası ve stratigrafisi



Figure 8.5. Zeytinli Bahçe. Pottery from the lower Late Chalcolithic levels (LC3) in trench B8



Şekil 3 Zeytinlibahçe; sondaj B 8: a ve b – Orta Uruk keramikleri; c – kireçtaşı göz-İdol

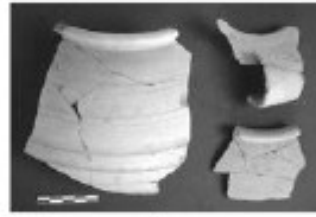
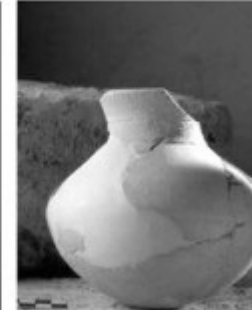
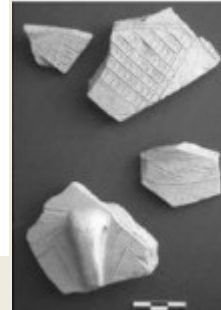


Figure 8.6. Middle Uruk materials from Zeytinli Bahçe (LC4)



# Hacinebi

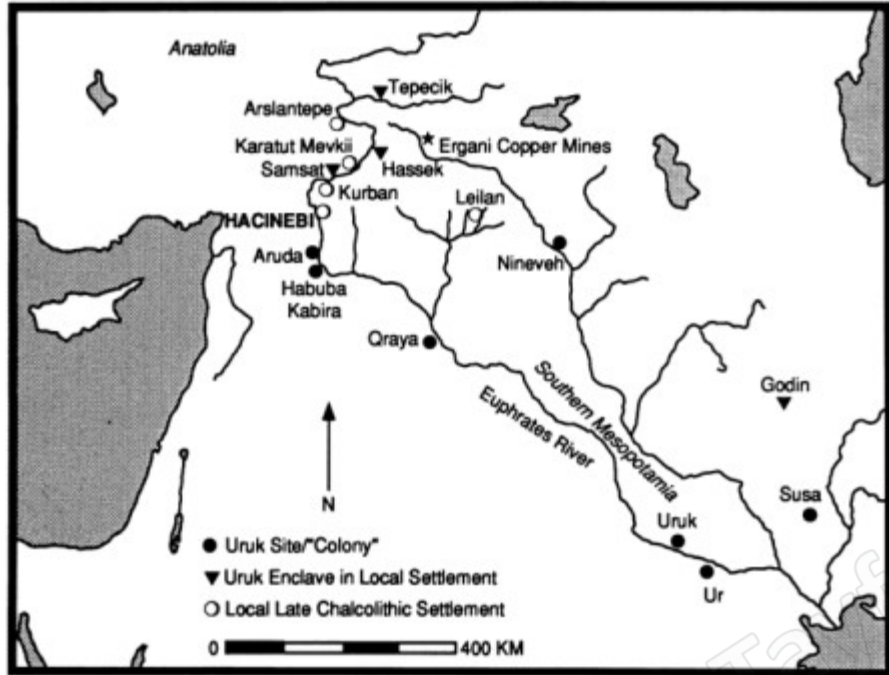


Fig 1. Map of the fourth-millennium BC. Near East, showing major Uruk sites, "colonies," and Local Late Chalcolithic settlements in southeastern Anatolia

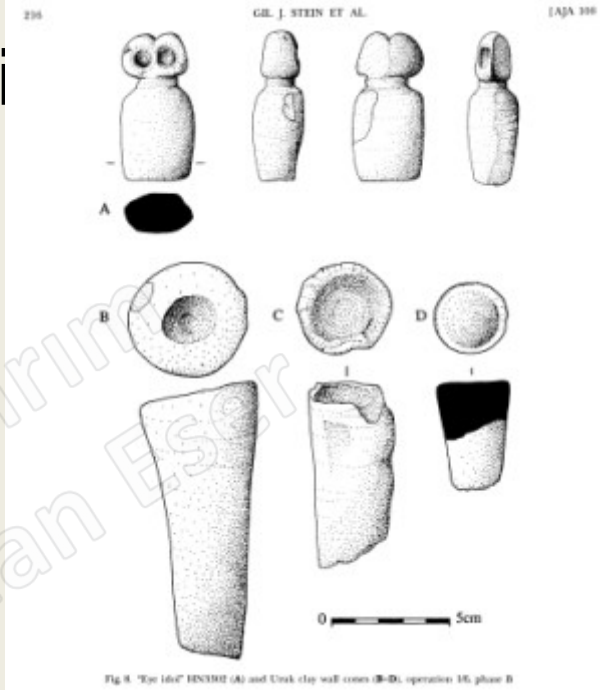


Fig 8. "Eye 160" HN310 (A) and Uruk clay wall cones (B-D), operation 15, phase B



THE LATE CHALCOLITHIC SEQUENCE AT HACINEBI TEPE

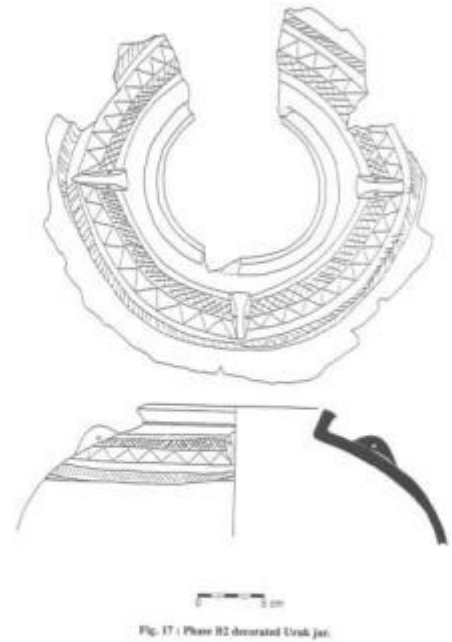


Fig. 17 | Phase B2 decorated Uruk jar.

| cal BC | Hacinebi | Kurban | Leilan | Brak                    | Hammam          | Amuq | Arsilantepe  | Tabqa         | South       |
|--------|----------|--------|--------|-------------------------|-----------------|------|--------------|---------------|-------------|
| 3000   | EB I     | V      |        |                         |                 | G    | VIB2<br>VIB1 |               |             |
| 3250   |          | VIA    |        | TW 12                   |                 |      | VIA          | Habuba Kabira | Late Uruk   |
| 3500   | B2       |        | IV     | TW 13                   |                 |      |              | Sheikh Hassan | Middle Uruk |
| 3750   | B1       | VIB    | V      | TW 14<br>TW 15<br>TW 16 |                 | F    | VII          |               | Early Uruk  |
| 4000   | A        | VII    | VIb    |                         | VB<br>VA<br>IVD |      | VIII         |               |             |

Fig. 19 : Chronological table.

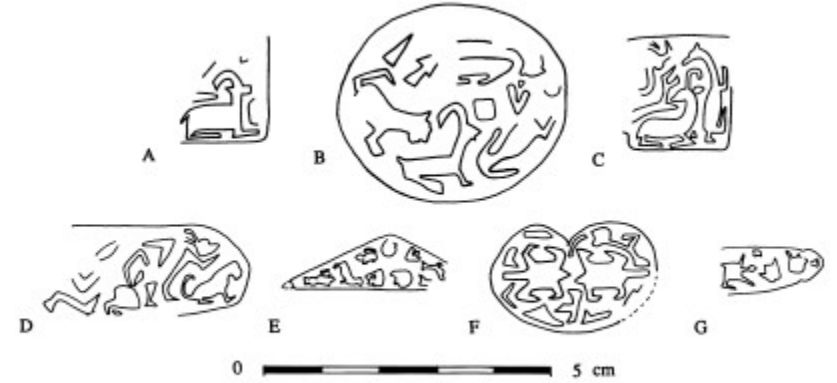


Fig. 20. Main motifs on Local Late Chalcolithic stamp seal impressions (op. 6, pit 84): A. Caprid HN3912; B. Lion and caprid HN3398; C. Lion and caprid HN3399; D. Protomes HN3810; E. Protomes HN3867; F. Turtle or tortoise? HN3894; G. Turtle or tortoise? HN3802

# Hassek Höyük

Urfa/Siverek  
yakınlarında Bir  
Geç Kalkolitik  
( Uruk ) Dönem  
Yerleşimi

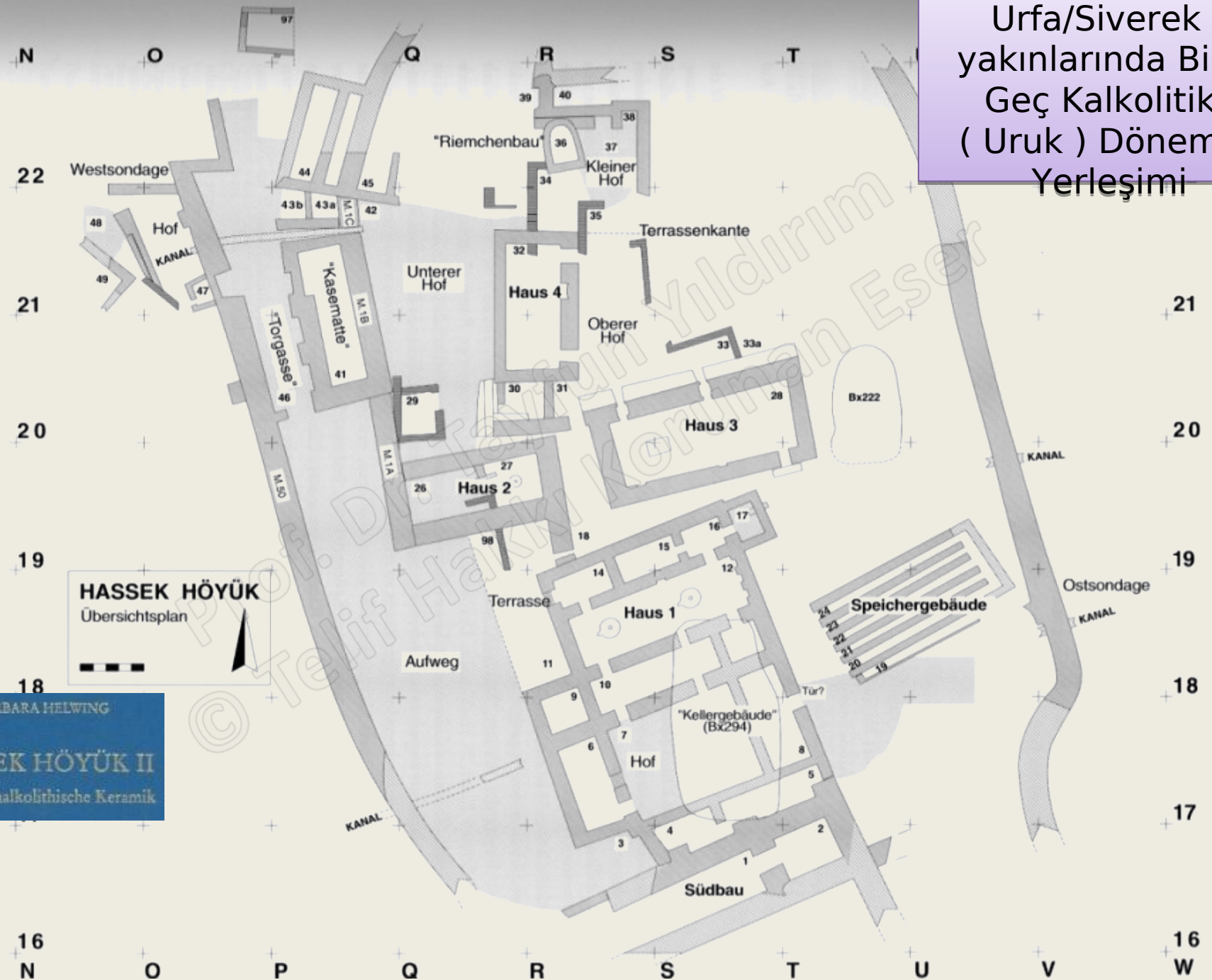


Abb. 1 Übersichtplan Hassek Höyük

BARBARA HELWING  
**HASSEK HÖYÜK II**  
Die spätchalkolitische Keramik

10R UND KASEMATTE (DAUSCHICHT 2B/A)



HASSEK HÖYÜK, Haus 1, Raum 12: Kat. 1-42 (M 1:3)



TAFEL 4



TAFEL 6

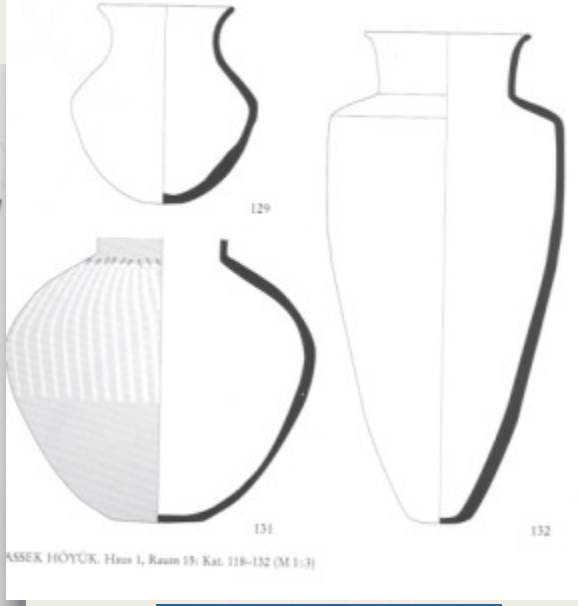
54



HASSEK HÖYÜK, Haus 1, Raum 12: Kat. 76-77 (M 1:6), - Kat. 78-84 (M 1:3)



HASSEK HÖYÜK, Haus 1, Grab 42 unter Fußboden Raum 12: Kat. 97. - Haus 1, Schutt über Raum 12: Kat. 99-102 (alle M 1:3)



HASSEK HÖYÜK, Haus 1, Raum 13: Kat. 118-132 (M 1:3)

BARBARA HELWING  
**HASSEK HÖYÜK II**  
 Die spätalkolithische Keramik



TAFEL 93



Kat. 235

Kat. 364

Kat. 251

Kat. 250

Kat. 252



Kat. 321

Kat. 8

Kat. 332

Kat. 367



Kat. 266

Kat. 69

Kat. 335

TAFEL 92



Kat. 336

Kat. 297

Kat. 298



Kat. 264

Kat. 262

Kat. 361



Kat. 53

Kat. 200

Kat. 634

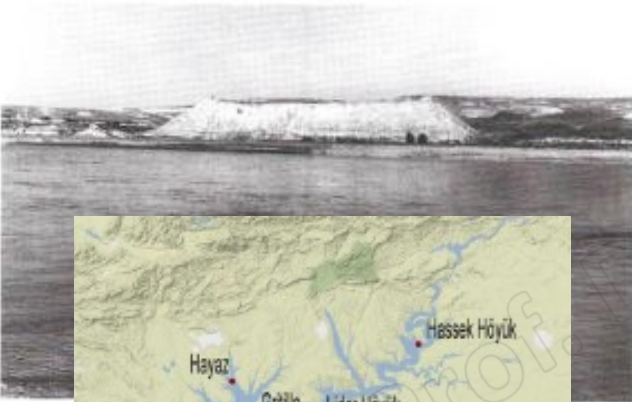
Kat. 295

# Samsat

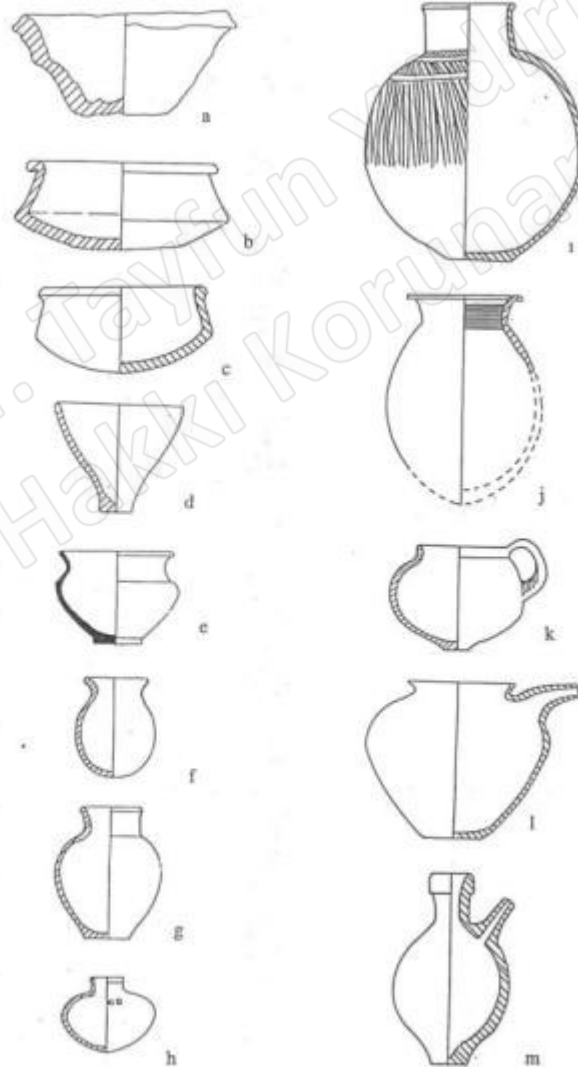
## Geç Kalkolitik / Uruk Yerleşimi



1. Baraj gölü dolarken Samsat.



3. Samsat Höyüğü batıdan görünüşü.



370. St. 86-129, Höyük XXII. Kat çanağı.



371. St. 86-144, Höyük XXII. Kattan derin kâse.

Özgüç, N., 2009



372. Höyük XXII. Kattan çan biçimli kâseler.



377. Höyük XXIII. Kat seramikleri.



307. No. 80-53, Höyük XXIV. Kat damga çivisi.



380. Höyük XXIII. Kat kapları.



378. St. 86-142, Höyük XXIII. Kat maşrapa.



386. No. 83.975-977, Höyük XXIV. Kat. İki ve üç ayaklı damga çivileri



381. St. 86-206, Höyük XXIII. Kat damga mühür.



382. St. 86-207, Höyük XXIII. Kat damga mühür.



389. No. 87-1, Höyük XXIV. Kat damga matrisi.

Özgüç, N.,2009



379. St. 86-296 a-b, Höyük XXIII. Kat vaznı

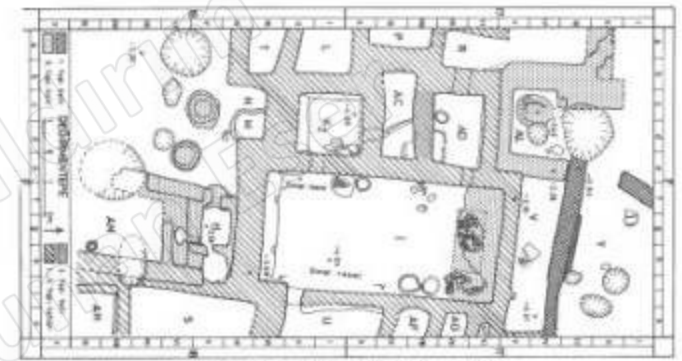
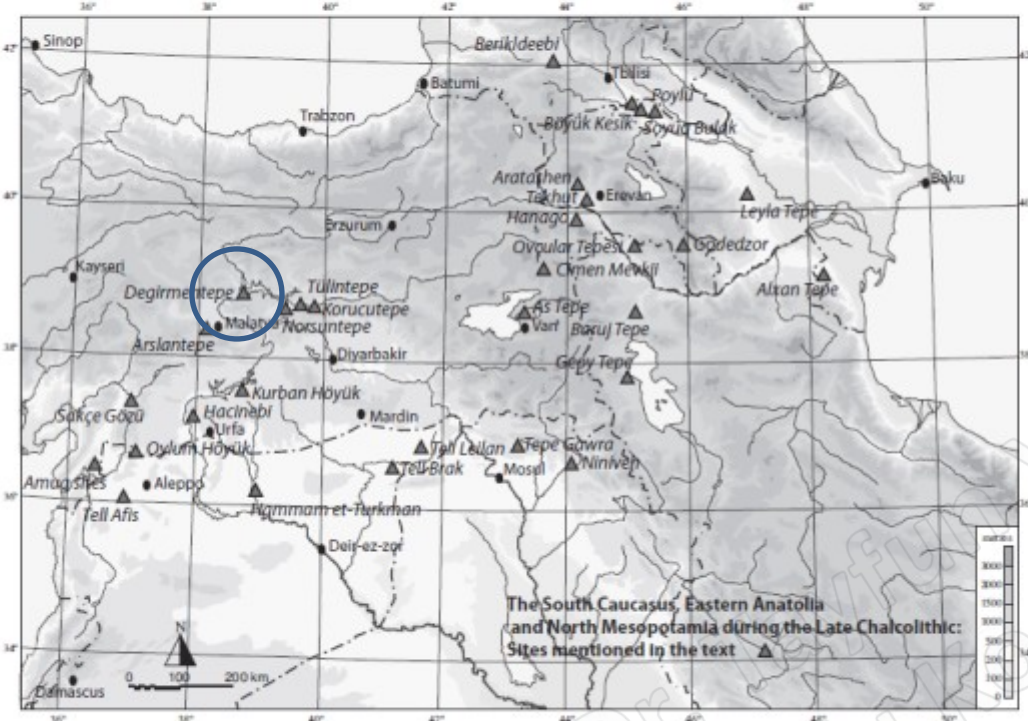


383. Höyük XXIV. Kat seramikleri.

# Değirmentepe Geç Kalkolitik / Ubaid

Özge Zaman

47



Res. 5 — 17-18 F aşamada, Kalkolitik Dönem Yapıları. 3 odalı büyük yapı (sarı ile boyanmış) (plan-çizim)

Esin, U., 1986

Fig. 1 — The South Caucasus, Eastern Anatolia and North Mesopotamia during the Late Chalcolithic. Sites mentioned in the text (Map background: M. SAUTAGE).

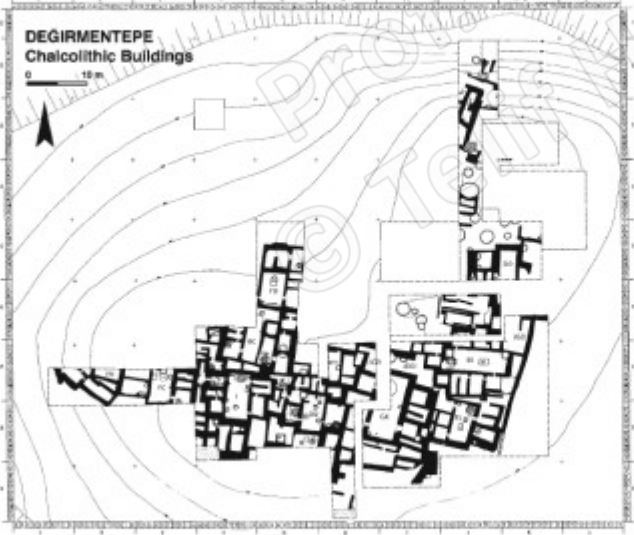
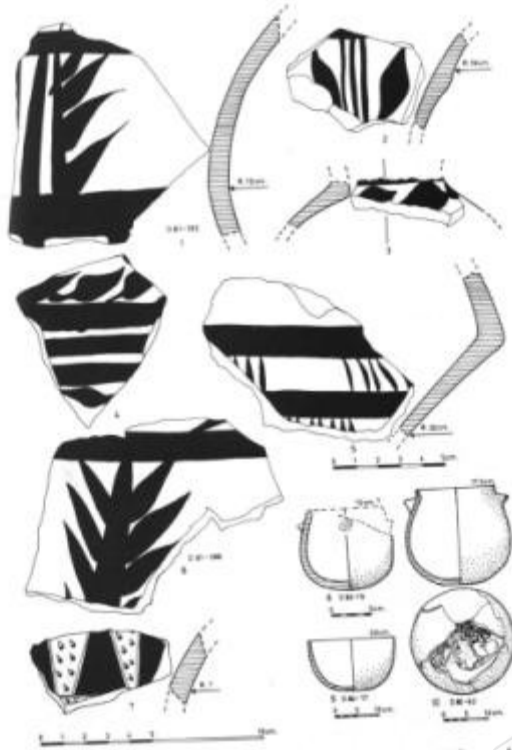


Figure 22.3. Plan of Ubaid-period Değirmentepe showing phases B, C, and D. Phases C and D are the earliest phases and were found only in the sounding in the northeast edge of the mound. Excluded from this plan is the latest phase A, which appeared only in the east portion of the mound by the tripartite building AS

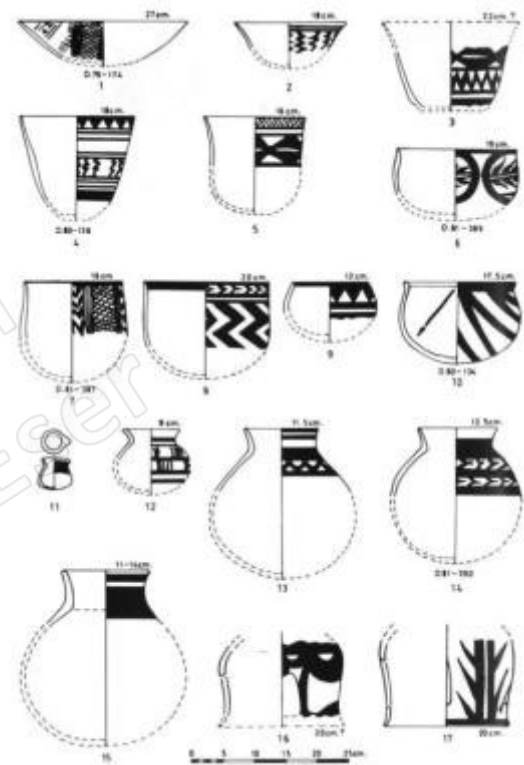




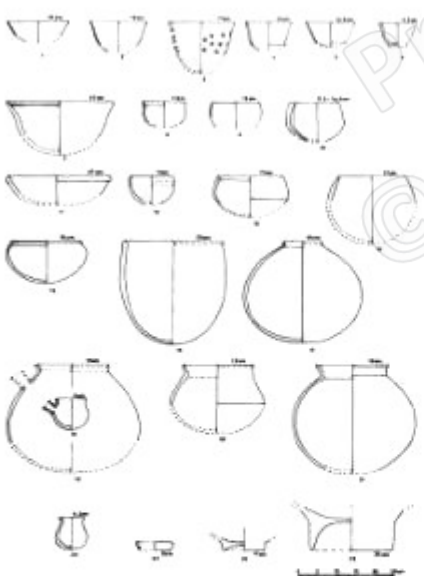
Res. 6 — Obeid tipi boyalı bezekli, koyu yeşil ağıklı ve Karan tipi kap ve kap parçalarına ait örnekler. Değirmentepe (çizim)



Res. 9 — Caba tipi satti kasınlık kaplar. Değirmentepe (çizim)



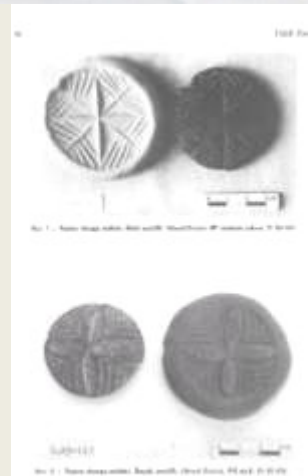
Res. 7 — Obeid tipi boyalı bezekli çanak çömlek. Değirmentepe (Çizim)



Res. 10 — Obeid tipi çanak çömlek kapları. Değirmentepe (çizim)



Res. 11 — Çeşitli damga mühürleri ve bula bula resimler. Değirmentepe (çizim)



Res. 12 — İki damga mühürleri. Başka mühürler Obeid Eski, 94 ve 95 sayılı.

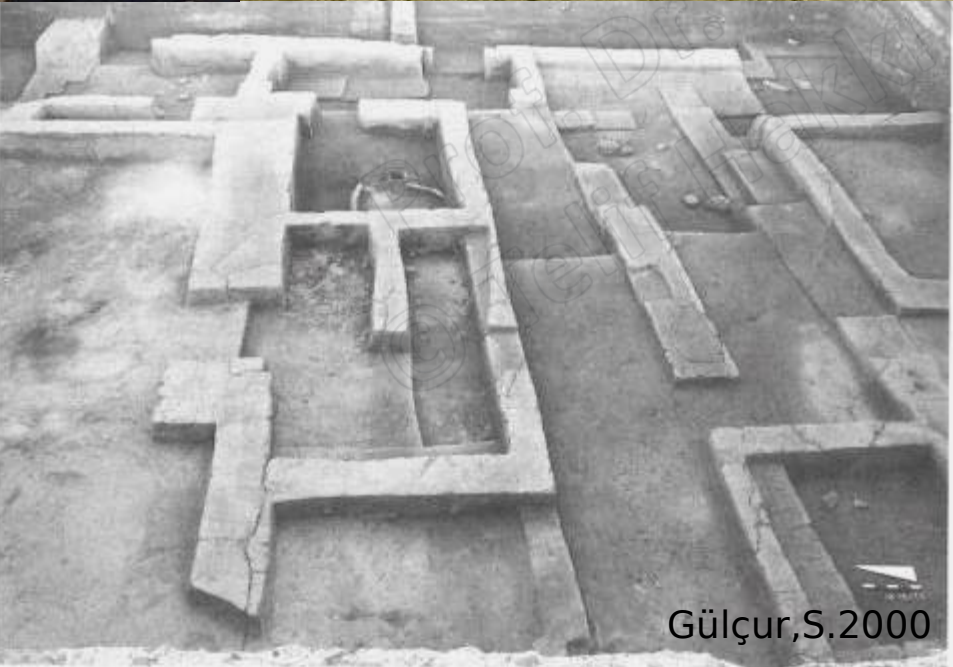


Res. 13 — İki damga mühürleri. Başka mühürler Obeid Eski, 94 ve 95 sayılı.

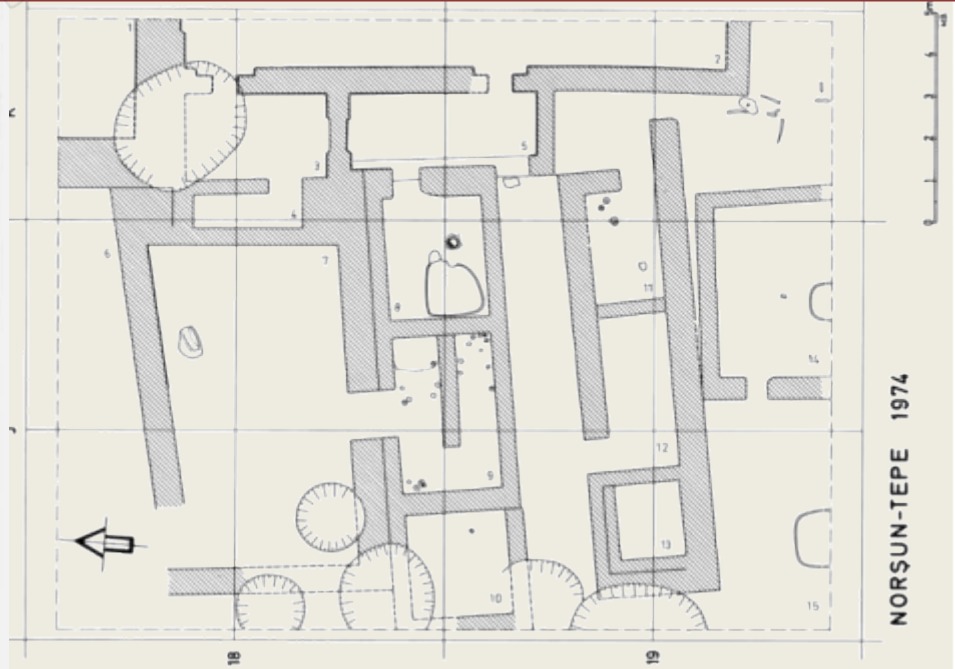


Fig. 1 – The South Caucasus, Eastern Anatolia and North Mesopotamia during the Late Chalcolithic. Sites mentioned in the text (Map background: M. SAUVAGE).

## NORŞUNTEPE / H. Hauptmann



Gülçur, S. 2000



NORŞUN-TEPE 1974

Abb. 2 : J-K/18-19, Bauschicht 10 (Gebäudekomplex mit Zentralhof).



Abb. 3 : J-K/18-19, Bauschicht 10, Magazin RM a-b mit Lagerbeständen von Coba-Töpfen.



Abb. 4 : J-K/18-19, Bauschicht 9.



Abb. 9 : W I Schüssel (J-K/18-19, Schicht 9 RN).

Abb. 10 : W I Napf (J-K/18-19, Schicht 10 RM a-b).



Abb. 11 : W I kleine Fußschale (J-K/18-19, Schicht 9 RO).



Abb. 12 : W I Ritz- und abstrahiert gezeichnete Scherben der oberen Phase.

Abb. 13 : Verschieden Exemplare der W I.



Abb. 14 : W III - Topf mit Trichterhals (J-K/18-19, Schicht 6 RP).



Abb. 15 : W III - Großtopf (J-K/18-19, Schicht 9).



Abb. 16 : W IV - Coba-Topf (J-K 17, Bauschicht II).

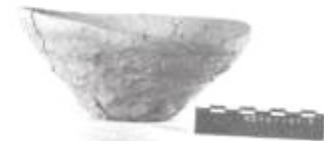


Abb. 17 : W IV - Coba-Topf (J-K 17, Bauschicht II).



Abb. 33 : W IX : Stempelverzierte Gruppe.



Abb. 34 : W IX : Verschiedene Beispiele der ritz- und stempelverzierten Gruppe. Unten links ein Siebfragment.

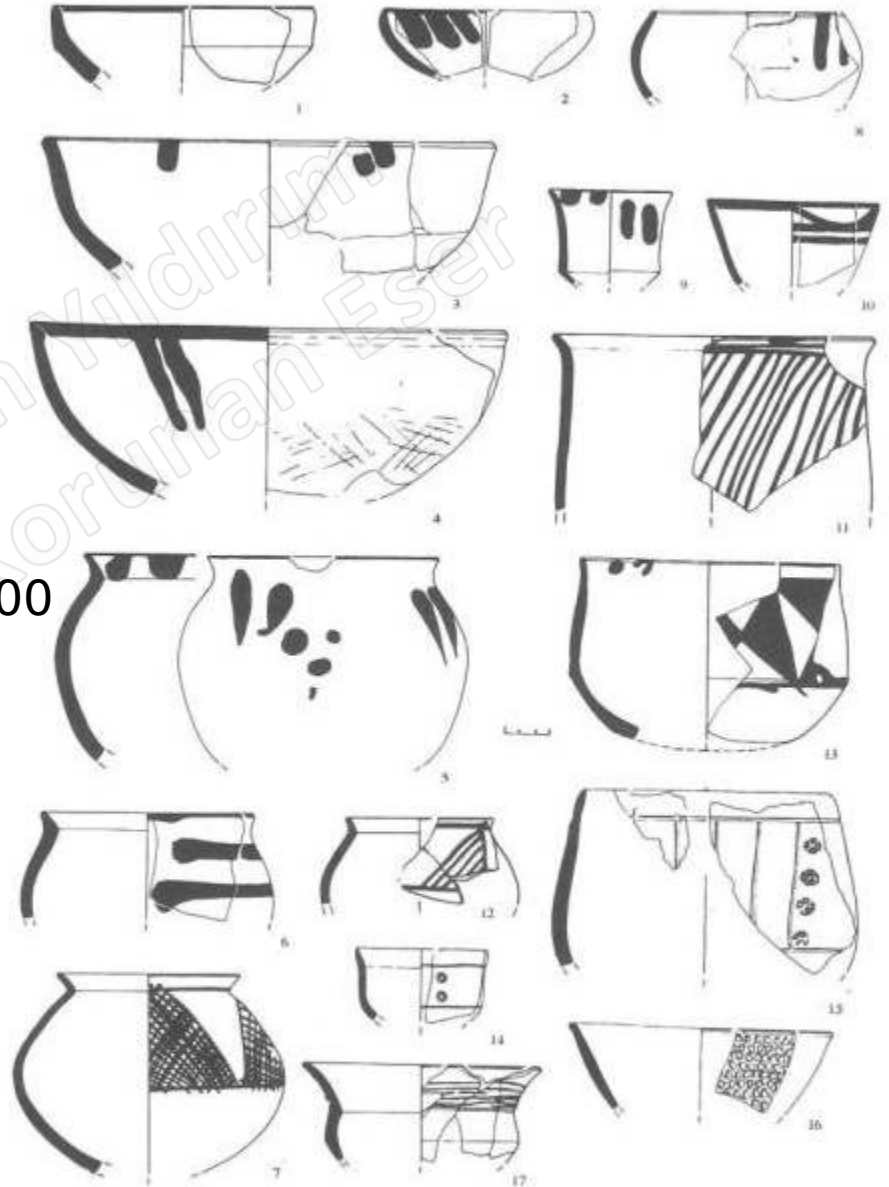


Abb. 48 : Bemalte, ritz- und stempelverzierte Beispiele (W V : 1-7, W VIII : 8-13, W IX : 14-17).



# Malatya / Arslantepe

| SEQUENZA CRONOLOGICA GENERALE    | PERIODO DI ARSLANTEPE | DATE C14 CALIBRATE CON LA DENDROCRONOLOGIA | ALTRE CULTURE DEL VICINO ORIENTE  |
|----------------------------------|-----------------------|--|---|
| Età Tardo Romana e Bizantina     | I                     |  |   |
| Età del Ferro                    | II - III              | 1100 - 700 a.C.                            | Regni Neo-Ittiti  |
| Tarda età del Bronzo II          | IV                    | 1600 - 1200 a.C.                           | Medio Regno ed Età imperiale Ittita   |
| Tarda età del Bronzo I           | V B                   | 1750 - 1600 a.C.                           | Antico Regno Ittita   |
| Bronzo Medio                     | V A                   | 2000 - 1750 a.C.                           | Periodo delle colonie Paleoassire in Anatolia                                   |
| Bronzo Antico III                | VI D                  | 2500 - 2000 a.C.                           | Protodinastico IIIb, Periodi Accadico e della III Dinastia di Ur in Mesopotamia |
| Bronzo Antico II                 | VI C                  | 2750 - 2500 a.C.                           | Protodinastico II-IIIa in Mesopotamia   |
| Bronzo Antico I                  | VI B2 / VI B1         | 3000 - 2750 a.C.                           | Periodo di Jemdet Nasr e Protodinastico I in Mesopotamia                        |
| Tardo Calcolitico 5 / Tardo Uruk | VI A                  | 3350 - 3000 a.C.                           | Cultura Tardo Uruk in Mesopotamia   |
| Tardo Calcolitico 3-4            | VII                   | 3800 - 3350 a.C.                           | Cultura Antico e Medio Uruk in Mesopotamia                                      |
| Tardo Calcolitico 1-2            | VIII                  | 4250 - 3800 a.C.                           | Fine della cultura Ubaid in Mesopotamia   |

Geç Kalkolitik Tabakalanma, M.Frangipane'den

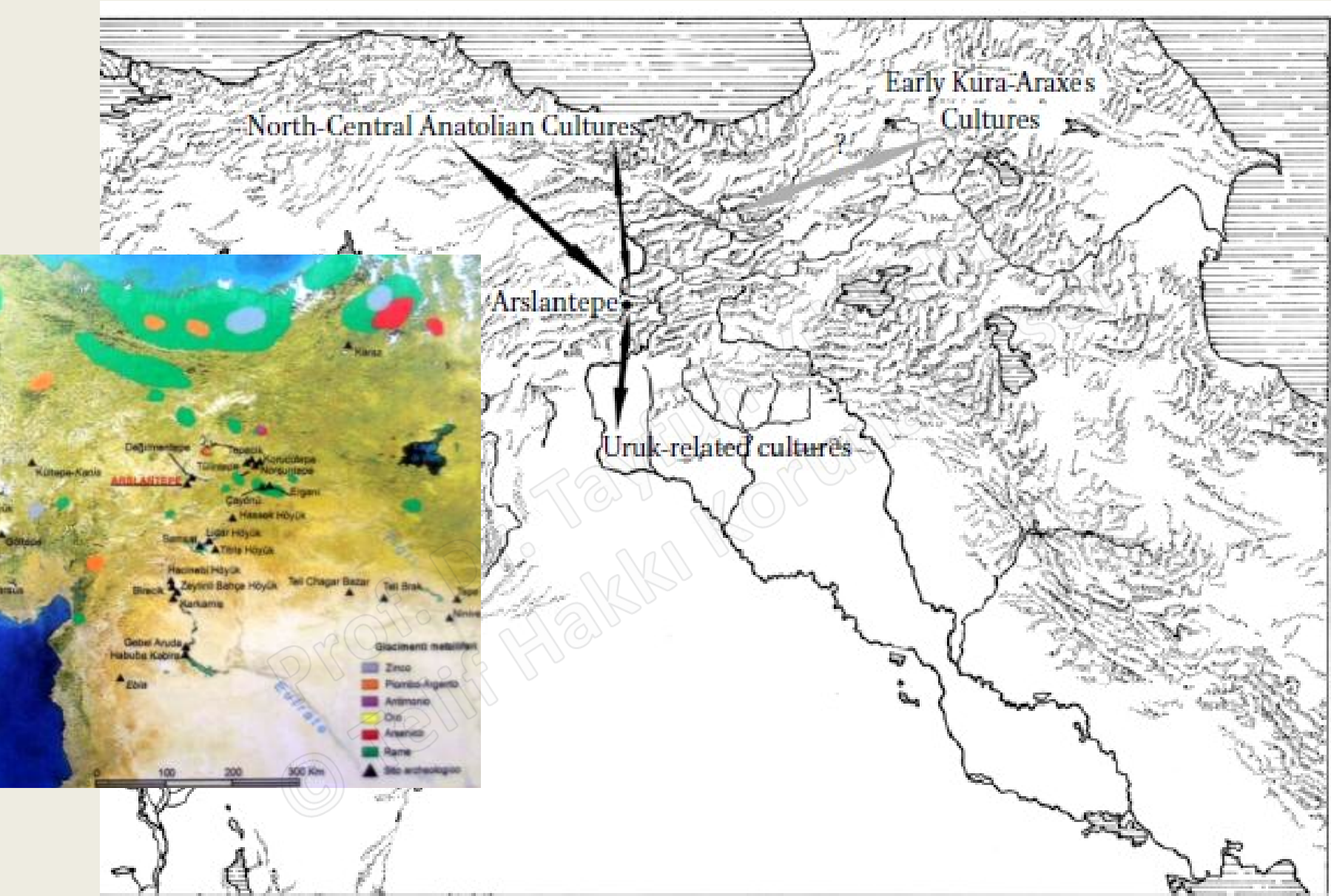


FIGURE 13.1

*Map illustrating the main directions of Arslantepe's relations in the 4th millennium BC.*

MARCELLA FRANGIPANE

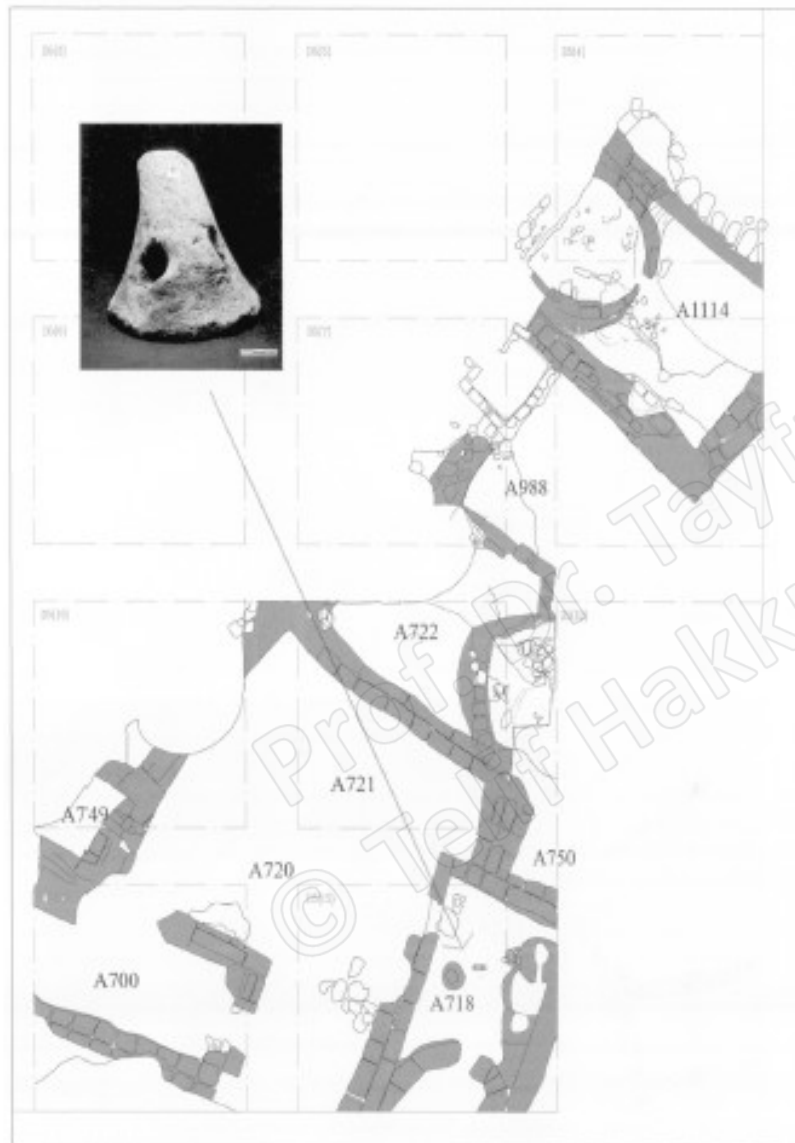


Fig. 2: Arslantepe. Domestic quarter dated to Period VIII (phase 2). The andiron found in kitchen A718 is shown in the upper left.



Fig. 4: a-c) "Multiple-Crown" bowls in Burnished Ware from Arslantepe VIII (drawings # 36297, 36497, 40404); d-e) example of a deep bowl with an ear rimming (drawing # 37697); e) example of a bowl with an out-turned thickened rim (drawing # 42496); f) example of a hemispherical bowl with an outward thickened rim in Scraped Ware (drawing # 37696); g) j) goblets from Arslantepe VIII (drawings # 43636, 32397, 36497).

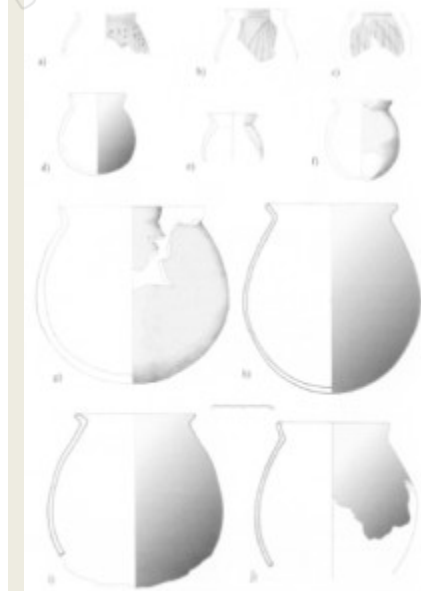


Fig. 5: Arslantepe Period VIII globular jars in Scraped Ware. a-c) base impressed decoration. Drawings # 15796, 15798, 32696, 12797, 17697, 37196, 7397, 7593, 8493, 22292.



Fig. 6: Bowls from Arslantepe Period VIII. a-c) examples of profiles present in all four paste categories (drawings # 67396, 43636, 43638, 18697, 36297, 36397); d) example of a bowl with a flat and slightly thickened rim (drawing # 17597); e) example of a bowl with an incurving rim, found in all paste categories except for the Plain Grit Ware (drawing # 42496); h-i) bowls with wide, flaring profiles, not known in dark Scraped Ware (drawing # 36297, 36497); j-l) examples of Mass-Produced Bowls (drawing # 18796, 18497, 18697); m-o) examples of bowls with a slightly everted or flared lip and rim (drawings # 43396, 17397, 42796).

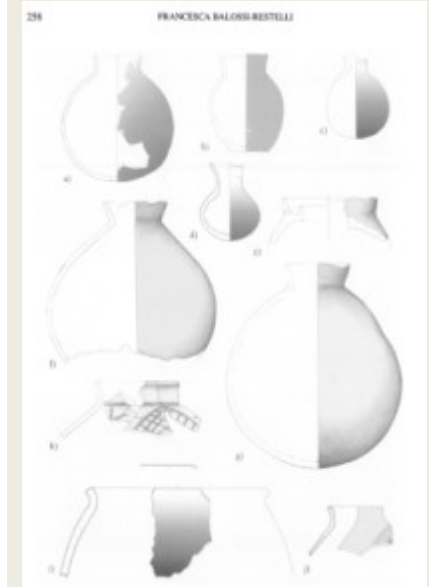
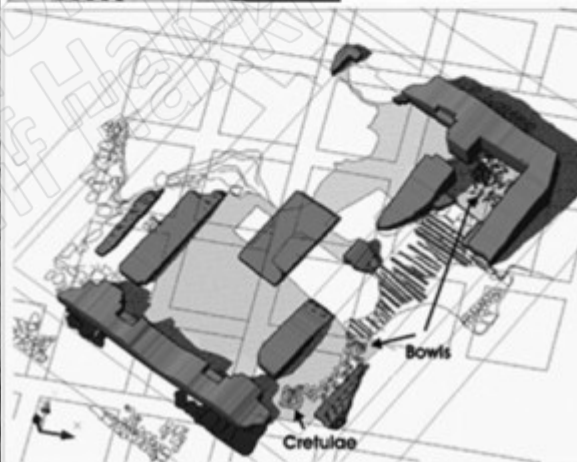
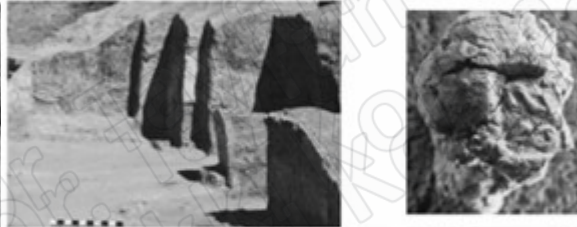


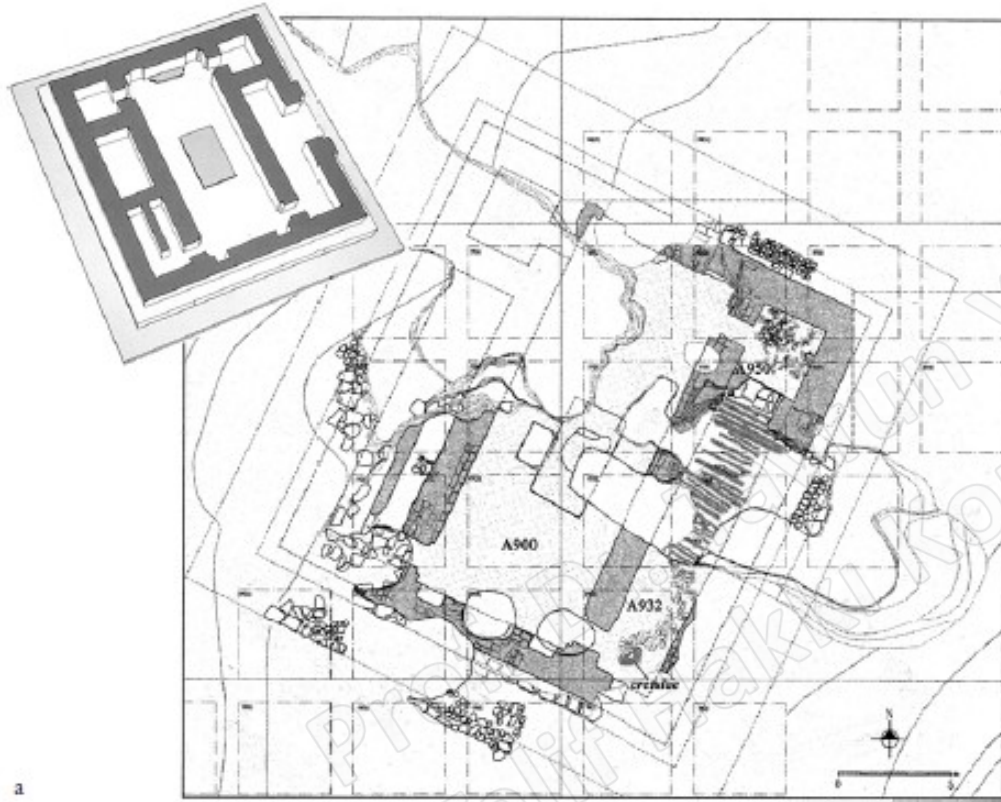
Fig. 7: Arslantepe Period VIII jars. a-f) plain ware (drawings # 15397, 36296, 26396, 36992, 7393, 7493, 36993); e) coarse chaff-tempered (drawing # 17796); f) grit-tempered with red-brown painted decoration (drawing # 18697); g) grit-tempered (drawing # 18697).



**Figure 45.2. Arslantepe, period VII (Late Chalcolithic 3-4). Elite residence (the so-called column building) on**

**Figure 45.3. Arslantepe, period VII (LC4). The ceremonial building (Temple C)**

## C Mabedi



a



b

Fig. 2 | (a) Arslantepe Period VII: Temple C and (b) mass-produced bowls from A900. Plan: Frangipane 2010a, Fig. II-6; photo: R. Ceccacci, Archive MAIAO.

| B.C.      |          | Arslantepe | Norguntepe | Hacinebi | Hussek | Brak      |
|-----------|----------|------------|------------|----------|--------|-----------|
| 4300-3900 | LC 1     | VIII       | 36-31      |          |        | TW 18-19  |
| 3900-3600 | LC 2     | VII        | gap ?      | A        |        | TW 17-14  |
| 3600-3400 | LC 3     | VII        | gap        | B1-B2    |        | TW 13     |
| 3400-3000 | LC 4     | VI A       | gap        |          | 5      | TW 12-11  |
| 3000-2900 | EB I A ? | Tomb VI B1 | 30-...     |          | 4-3    | TW 10-... |
| 2900-2800 | EB I B   | VI B2      | ...26      |          | 2-1    | ...2      |
| 2800-2700 | EB I C   | —          | 25         |          | 0      | Ninev. 5  |
| 2700-2500 | EB II    | VI C       | 24         |          | —      | Ninev. 5  |



a

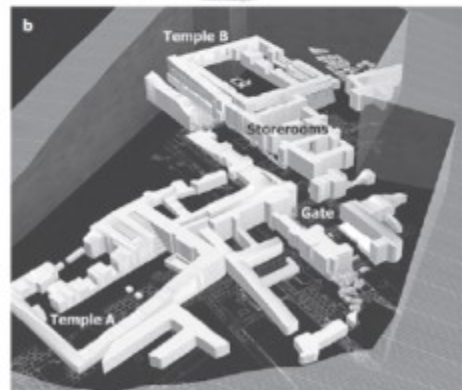
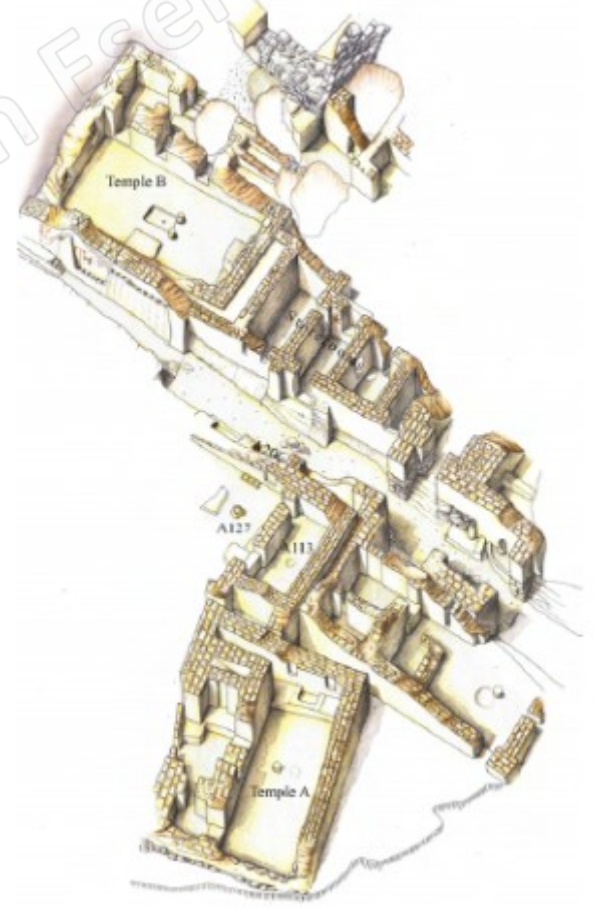
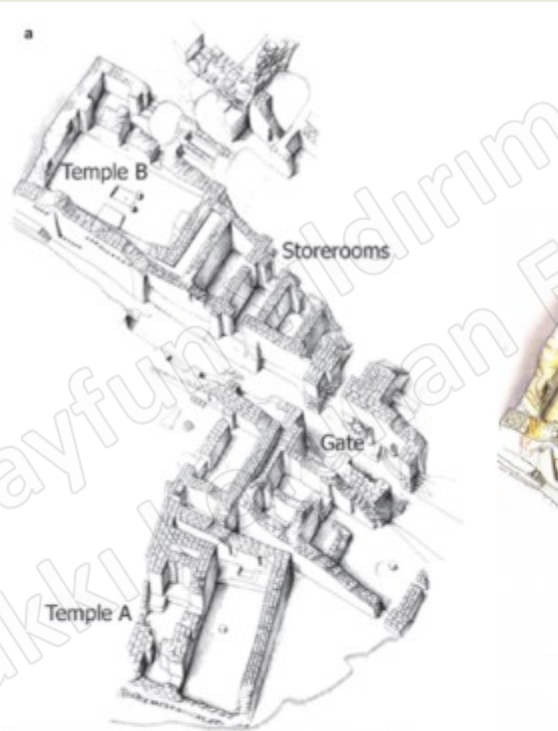
b



Arslantepe VII, M.Frangipane



# Sarayı, A ve B mabedleri

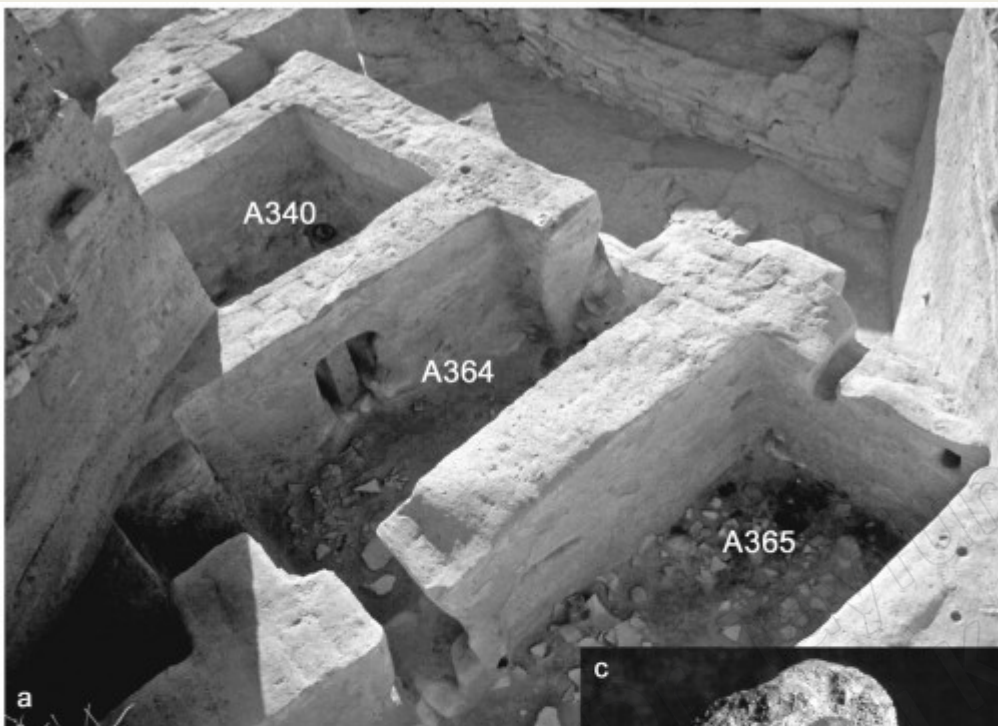


**Figure 45.4.**  
**Arslantepe, period VI A**  
**(Late Chalcolithic 5).**  
**The 4th millennium**  
**“palatial” complex.**  
**M. Francipane**

45. (a) Arslantepe, period VI A (LC5). (b) Isometric views of the fourth millennium B.C.E. “Palace.” (The 3D CAD drawing is due to Corrado Alvaro.)

# Depo odaları ve B Mabedi

Maria Bianca D'Anna



a



b



c

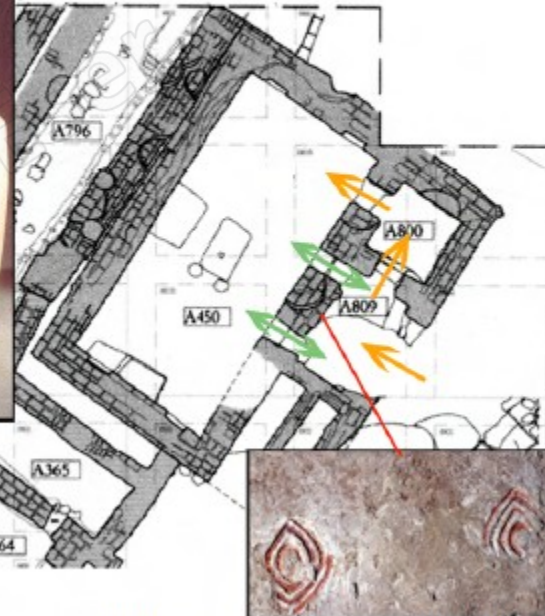


Fig. 8 | Period VI A Temple B: plan; access pattern; wall decorations; some of the pots found in A450. Plan by Alvaro 2010; photo R. Ceccacci, Archive MAIAO

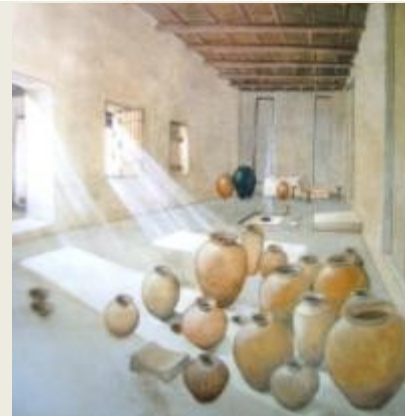




Fig. 10 | Mud tables in A450 (a) and A747 (c) during excavation, (b) one of the two human figures depicted in the storeroom A364. Photo R. Ceccacci, Archive MAIAO.

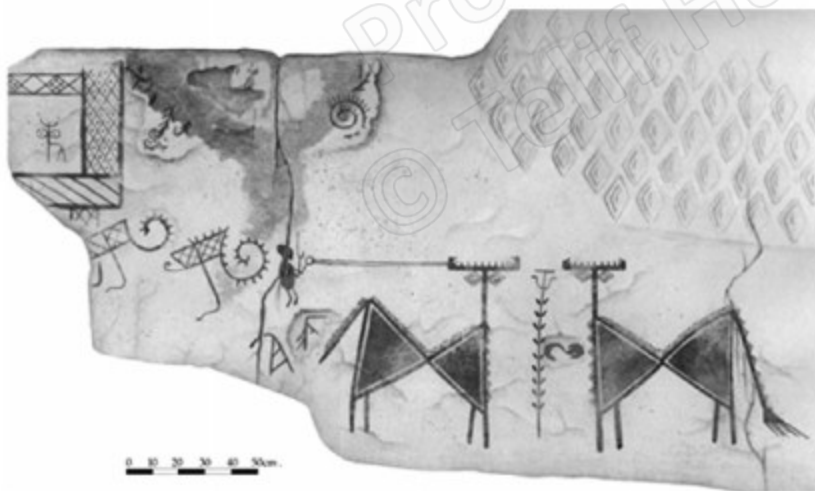


Figure 45.6. Arslantepe, period VI A (LC5). Wall paintings in the palatial complex.



FIGURE 45.2. Arslantepe, Period VIa (LC5). (a) wheel made "flat stand" showing the influence of Central Anatolian repertoires in the local Late Chalcolithic pottery.



Figure 45.3. Three tablets from the storeroom A364 showing human figures with feathered headdresses. The figures are similar to those depicted in the wall paintings of the palatial complex.

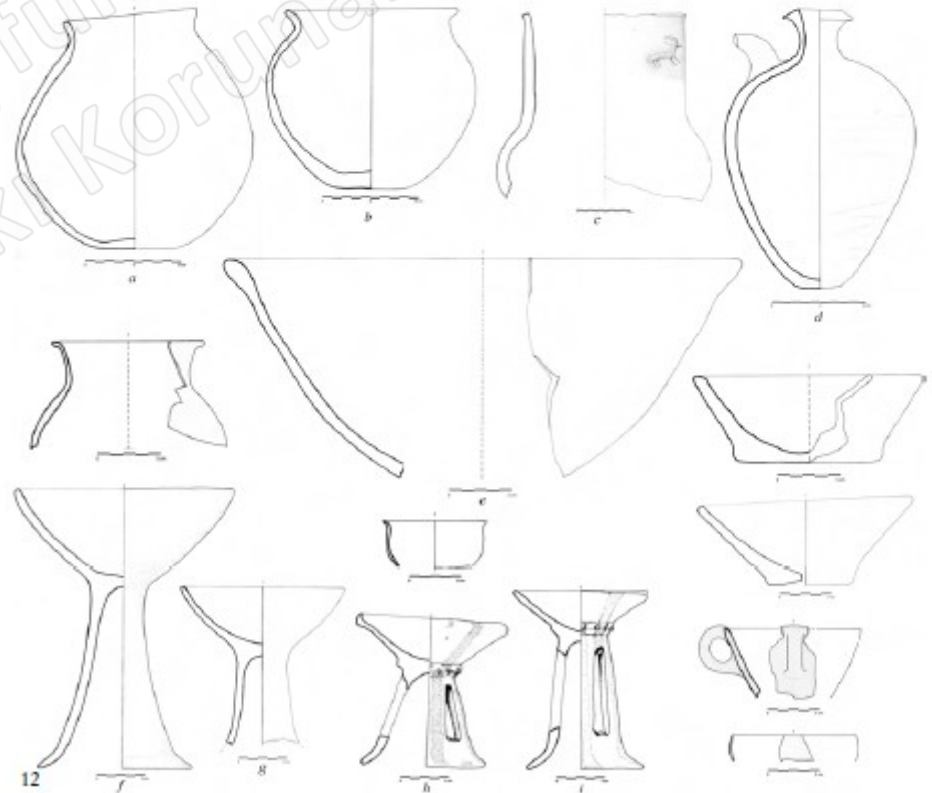
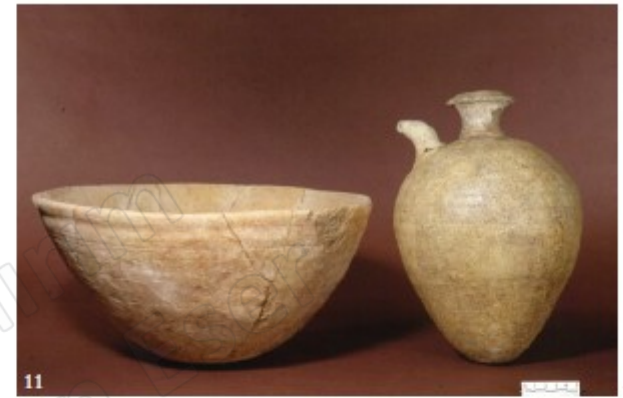




Fig. 9 | Period VI A: the northern complex of residential buildings. Plan after Alvaro 2010.

Fig. 11 | One of the two basins and the bottle found in A747. Archive MAIAO.

Fig. 12 | Ceramics from A747.



12

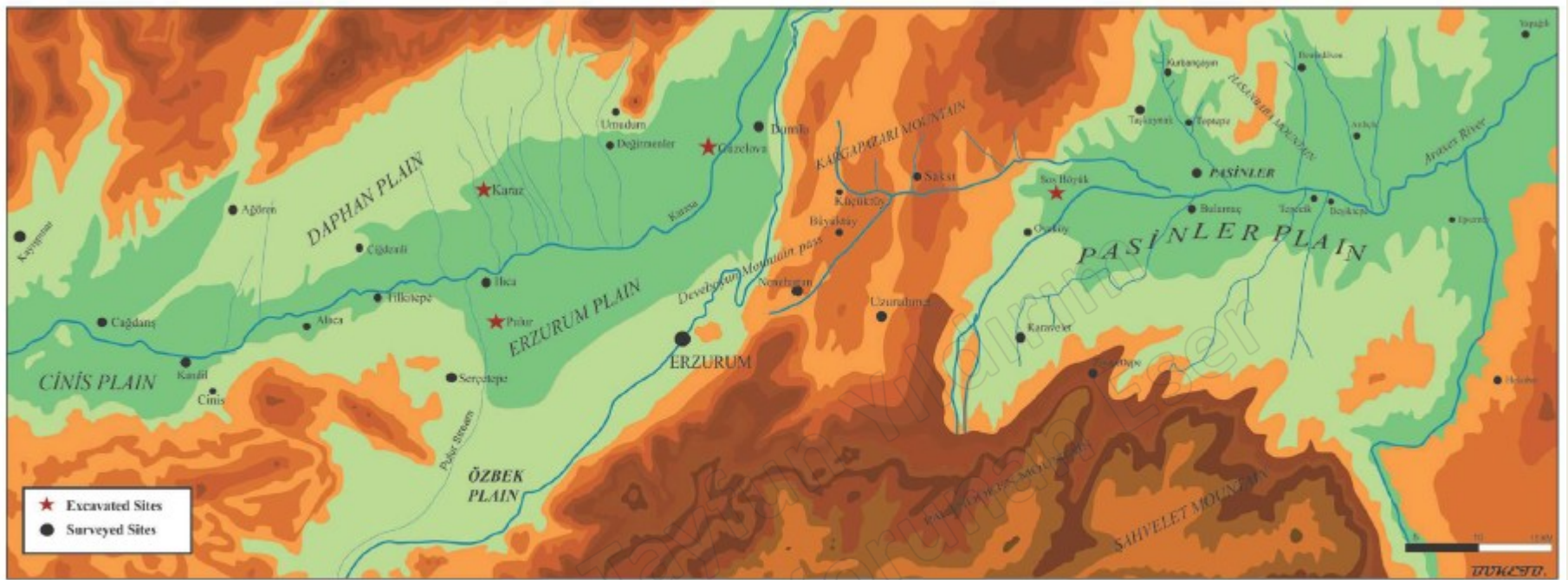


Fig. 2: The Map of Erzurum and Pasinler Plains Showing that Excavated and Surveyed Kura-Araxian sites / *Kazısı ve Yüzey Araştırmaları Yapılmış Merkezleri Gösteren Erzurum ve Pasinler Ovalarının Haritaları*. M. Işıklı'dan.

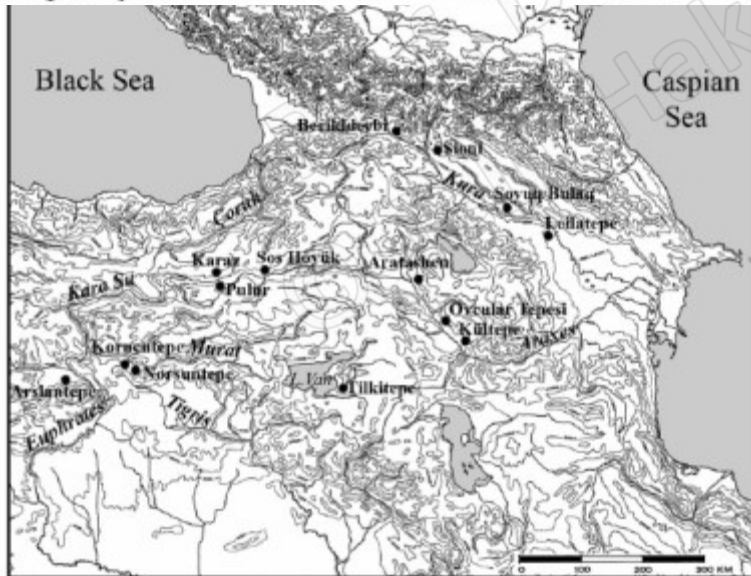


Figure 9.1. Eastern Anatolia, southern Caucasus, and the main sites mentioned in the text. GIULIO PALUMBI

|      | Eastern Anatolia and Southern Caucasus |                    | Upper Euphrates   |              |
|------|--|--------------------|-------------------|--------------|
|      | 1st Hypothesis                         | 2nd Hypothesis     |                   |              |
| 5000 | Chalcolithic                           | Early              | Early             | Ubaid        |
| 4750 |  | Middle             | Middle            | Period       |
| 4500 | Cultures                               | Chalcolithic       | Chalcolithic      | LC 1-2       |
| 4250 |  | Late Chalcolithic  | Late Chalcolithic | LC 3         |
| 4000 |  | Late Chalcolithic  | Late Chalcolithic | LC 4         |
| 3750 |  |                    |                   | LC 5         |
| 3500 |  | Kura Araks Culture | Early Bronze      | Early Bronze |
| 3250 | Early Bronze                           |                    |                   |              |
| 3000 |  |                    | Early Bronze      | Early Bronze |
| 2750 |  |                    |                   |              |

Figure 9.5. Cultural and chronological periodization of the fifth and fourth millennium B.C.E. in eastern Anatolia and southern Caucasus.

# Sos Höyük

## LATE CHALCOLITHIC (SOS V A)



Period Va: Late Chalcolithic (3500/3300-3000 BC)

Radiocarbon dates

Beta-74452 4510 +/- 70 BP

1 sigma: cal BC 3330-3020 and 2970-2940

2 sigma: cal BC 3360-2910

Sample: charcoal

Comment: collected from exposed L17d scarp before commencement of project in 1994.

Beta-107912 4390 +/- 70 BP

1 sigma: cal BC 3090-2910

2 sigma: cal BC 3325 -2885

Sample: charcoal

Comment: L17d/M17c, locus 4201, basket 2; base of curved wall on exterior

Beta-120452 4590 +/- 50 BP

1 sigma: cal BC 3365 - 3335

2 sigma: cal BC 3500 - 3435 and 3385 -3285 and 3245 -3105

Sample: charcoal

Comment: L17d/M17c, locus 4223, basket 25; base of sondage

SOS HÖYÜK AND THE ERZURUM REGION IN LATE PREHISTORY

357

Anthony SAGONA

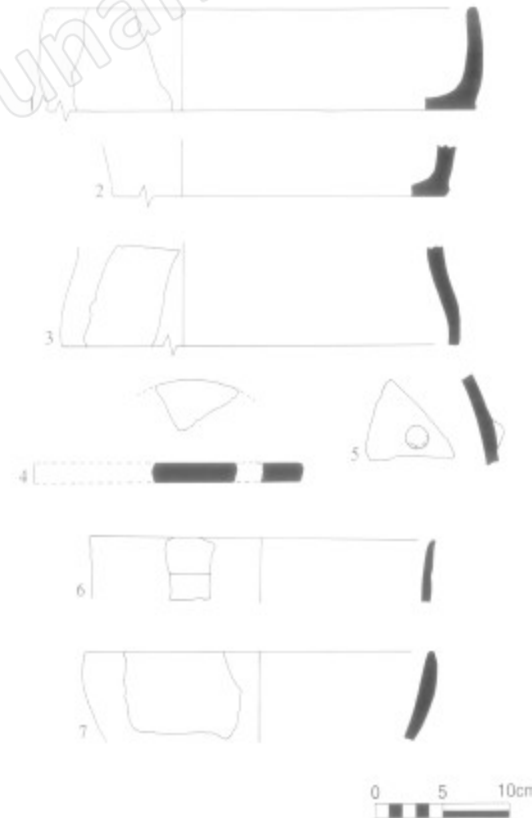


Fig. 5: The Samples of Sos VA Ceramics / Sos Höyük VA Keramik Örnekleri (Redrawn from figures in Sagona/Sagona 2000; Sagona 2000, Kiguradze/Sagona 2003).

Fig. 7: Sos Höyük Period Va (Late Chalcolithic).