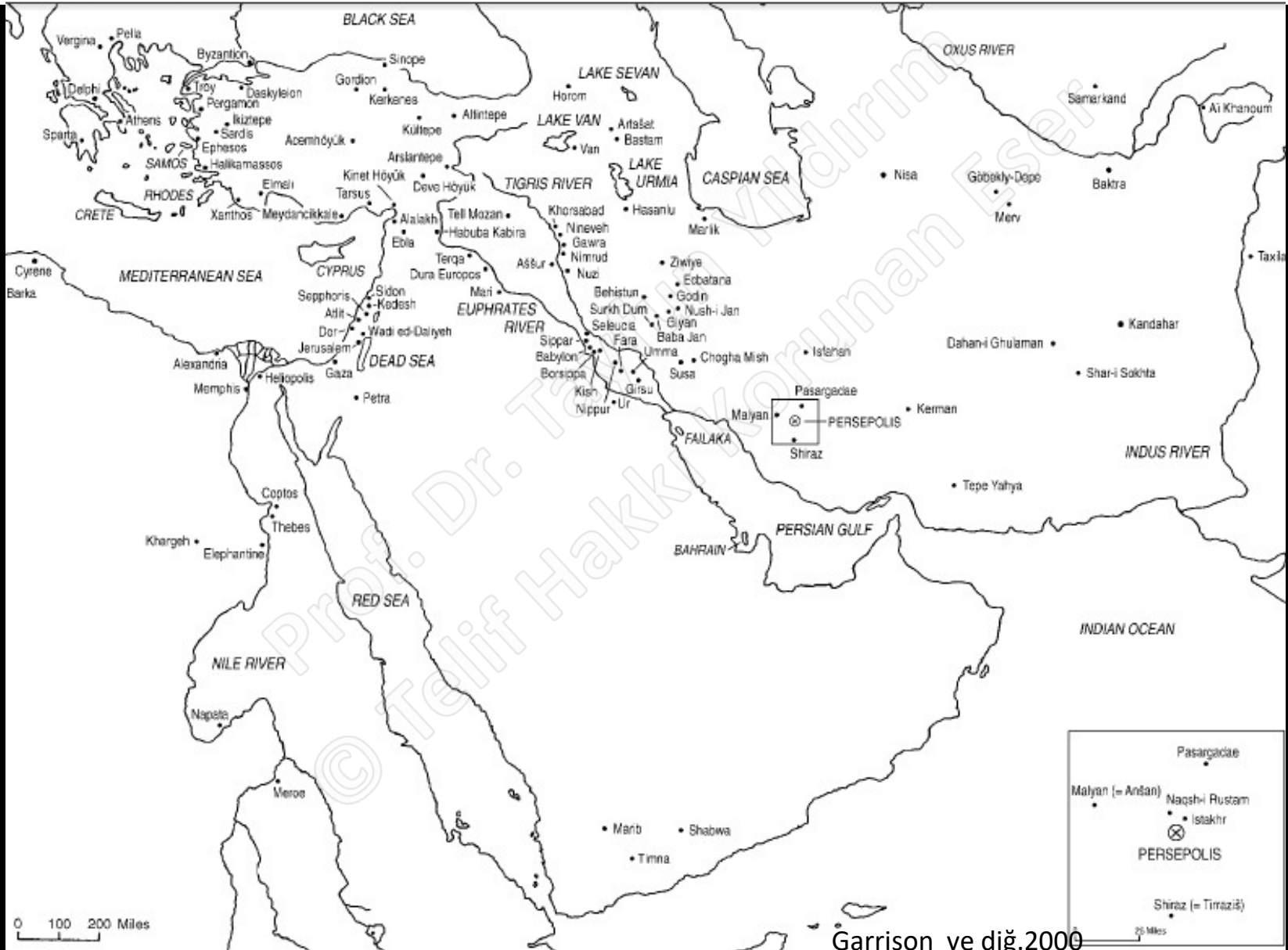


Akamenid / Pers Mühürleri



Anadolu Akhaimenid Mühürleri



Res. 2:
Piramidal damga mühür. Cam,
(Anadolu Medeniyetleri Müzesi, 8.49.67)

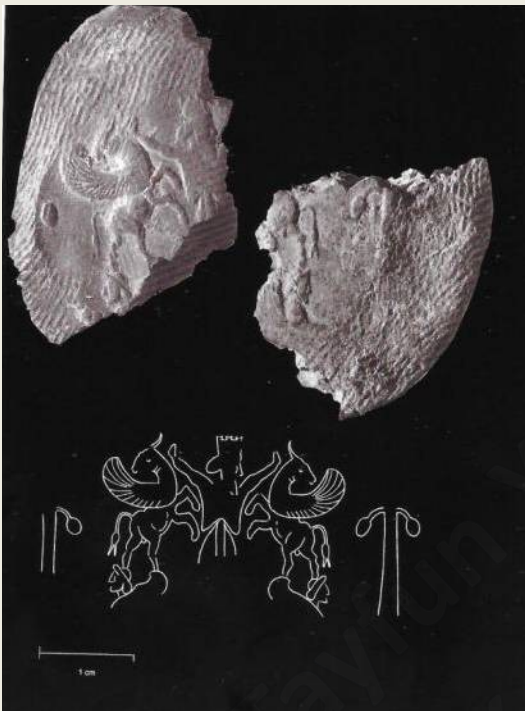
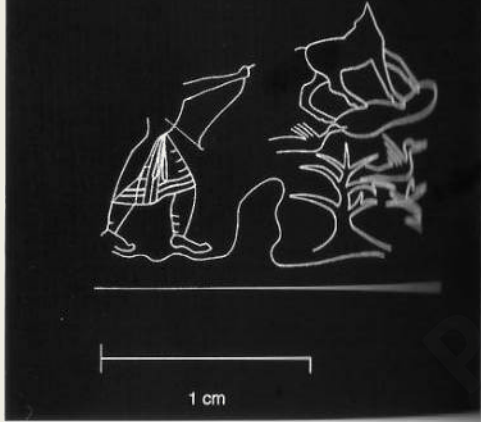
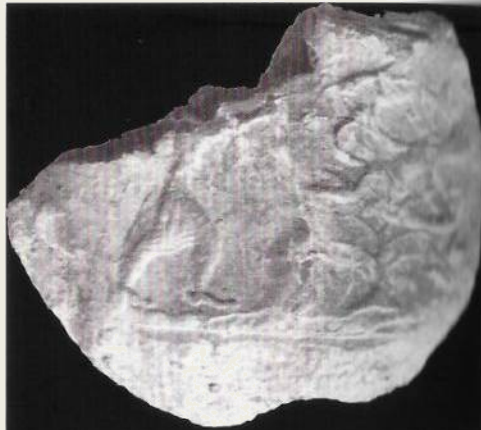
Kaptan,D.2017



Res. 1:
Piramidal damga mühür. Kalsedon.
(Anadolu Medeniyetleri Müzesi, 20.19.68)



Res. 3 a-b:
Piramidal damga mühür. Uylupınar,
(Burdur Arkeoloji Müzesi, 249 20 74)



(Kaptan 2002. (II): 91, Pl. 206)



Res. 5:
DS 110. Mühür baskısı.
(Kaptan 2002 (II): 123, lev. 318-319)

Gordion Seals and Sealings

Elspeth R. M. Dusinberre



Figure 157. Cat. No. 33 (2342 SS 100). (a) Seal face.
© 2005 Gordion Archaeological Project.



Figure 157. Cat. No. 33 (2342 SS 100). (b) Seal face.
© 2005 Gordion Archaeological Project.



Figure 157. Cat. No. 33 (2342 SS 100). (c) Seal impression.
© 2005 Gordion Archaeological Project.

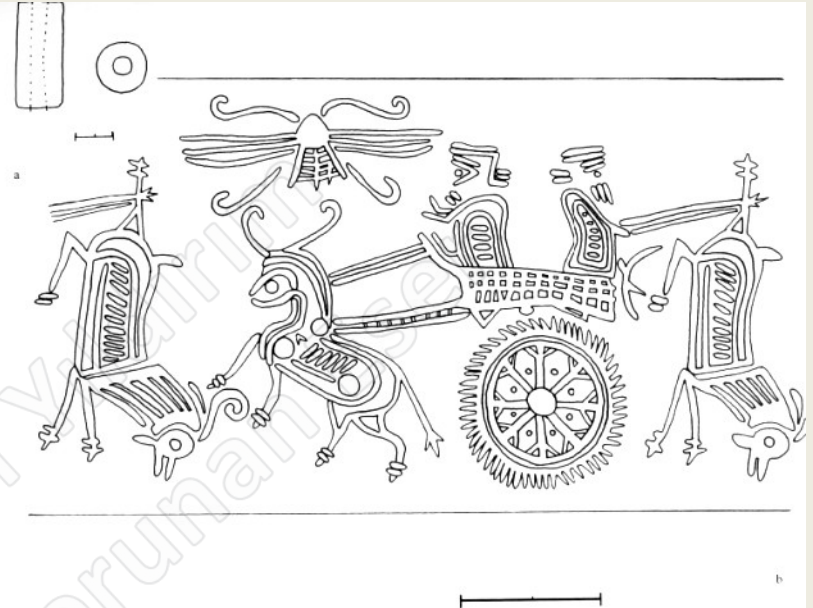


Figure 44. Cat. No. 34 (7287 SS 199). (a) Seal profile and base; (b) Seal impression.



Figure 158. Cat. No. 34 (7287 SS 199). (a) Seal face.
© 2005 Gordion Archaeological Project.



Figure 158. Cat. No. 34 (7287 SS 199). (b) Seal face.
© 2005 Gordion Archaeological Project.

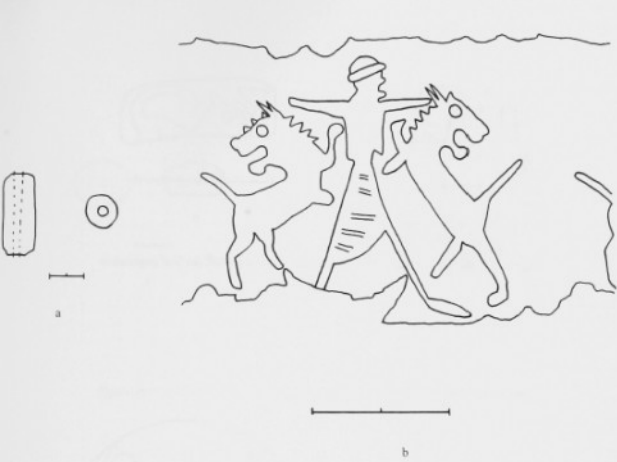


Figure 45. Cat. No. 35 (7557 SS 205). (a) Seal profile and base; (b) Seal impression.

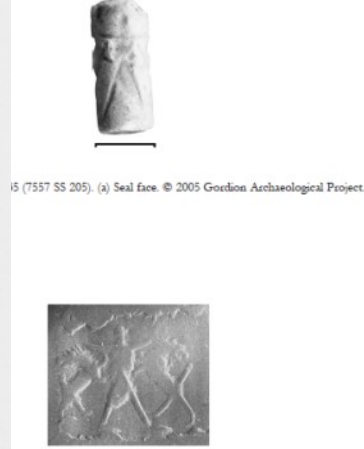


Figure 46. Cat. No. 35 (7557 SS 205). (b) Seal impression. © 2005 Gordion Archaeological Project.



Figure 163. Cat. No. 39 (4083 SS 150). (a) Seal face. © 2005 Gordion Archaeological Project.



Figure 163. Cat. No. 39 (4083 SS 150). (b) Seal profile. © 2005 Gordion Archaeological Project.

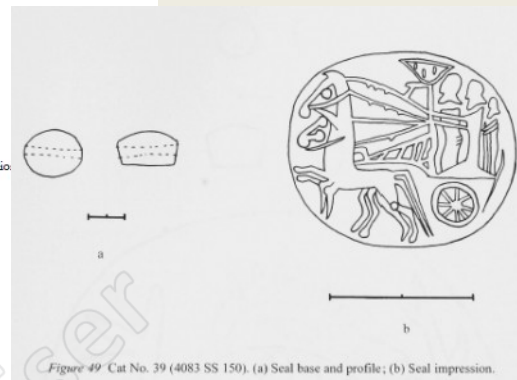


Figure 49. Cat. No. 39 (4083 SS 150). (a) Seal base and profile; (b) Seal impression.

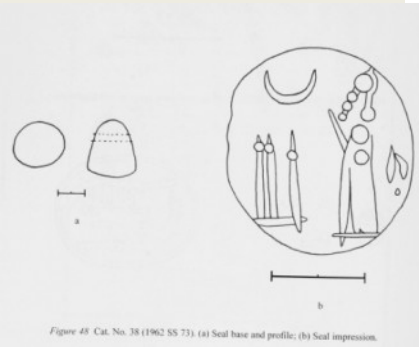


Figure 48. Cat. No. 38 (1962 SS 73). (a) Seal base and profile; (b) Seal impression.



Figure 162. Cat. No. 38 (1962 SS 73). © 2005 Gordion Archaeological Project.

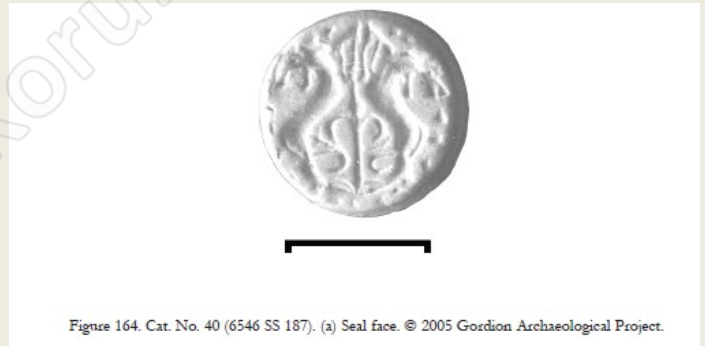


Figure 164. Cat. No. 40 (6546 SS 187). (a) Seal face. © 2005 Gordion Archaeological Project.

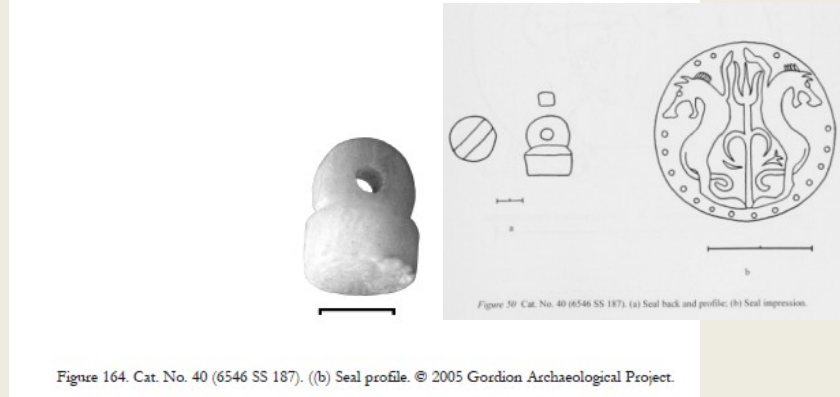


Figure 164. Cat. No. 40 (6546 SS 187). (b) Seal profile. © 2005 Gordion Archaeological Project.

Figure 50. Cat. No. 40 (6546 SS 187). (a) Seal back and profile; (b) Seal impression.



Figure 166. Cat. No. 42 (199 SS 9). © 2005 Gordon Archaeological Project.

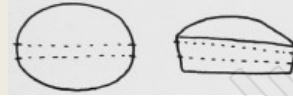
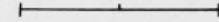
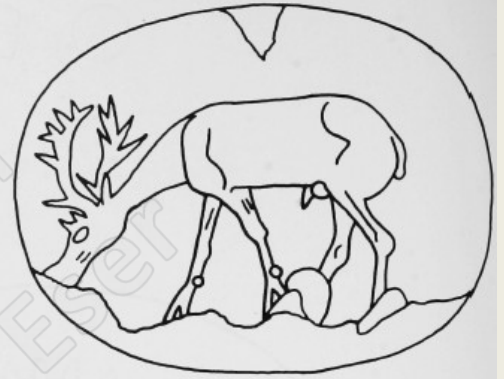


Figure 167. Cat. No. 43 (4492 SS 153). © 2005 Gordon Archaeological Project.



b

Figure 168. Cat. No. 43 (4492 SS 153). (a) Seal base and profile; (b) Seal impression.



a



b

Figure 52. Cat. No. 42 (199 SS 9). (a) Seal base and profile; (b) Seal impression.



a



b

Figure 56. Cat. No. 46 (2260 SS 90). (a) Seal base and profiles; (b) Seal impression.

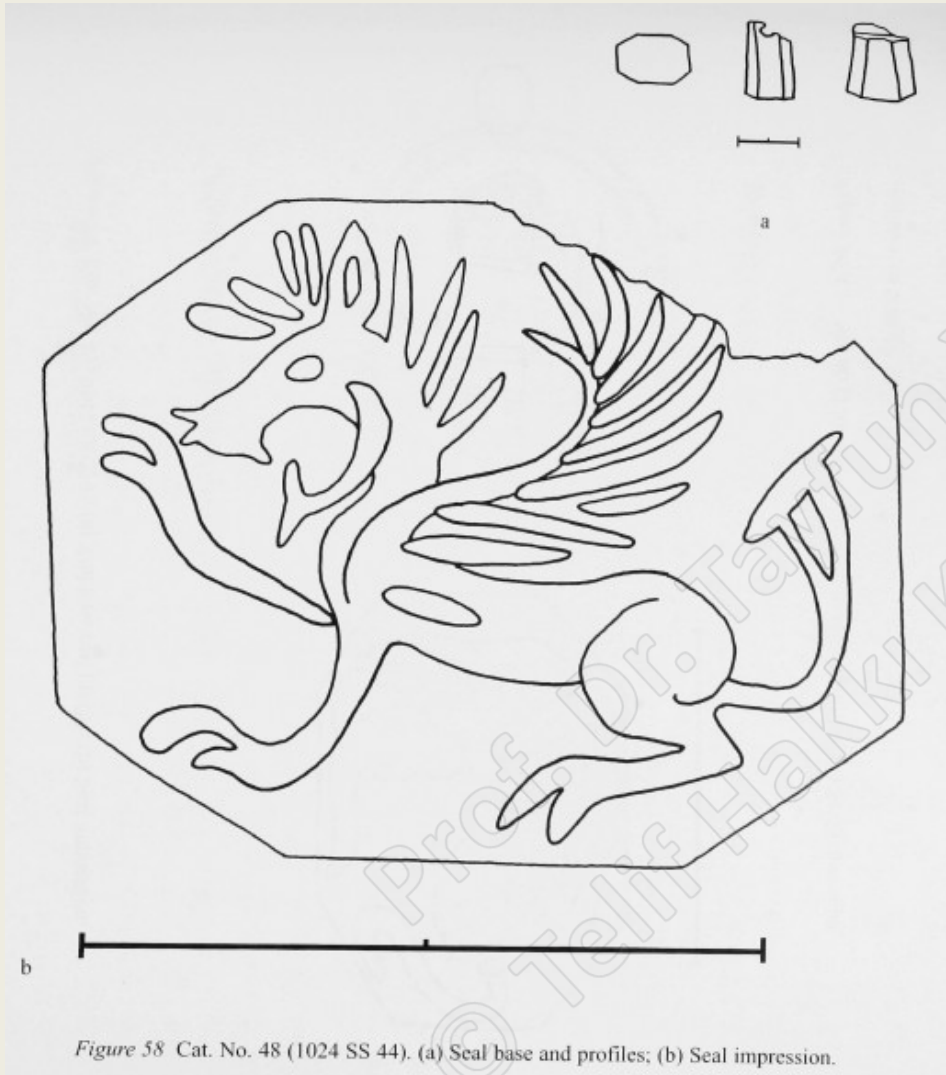


Figure 58 Cat. No. 48 (1024 SS 44). (a) Seal base and profiles; (b) Seal impression.

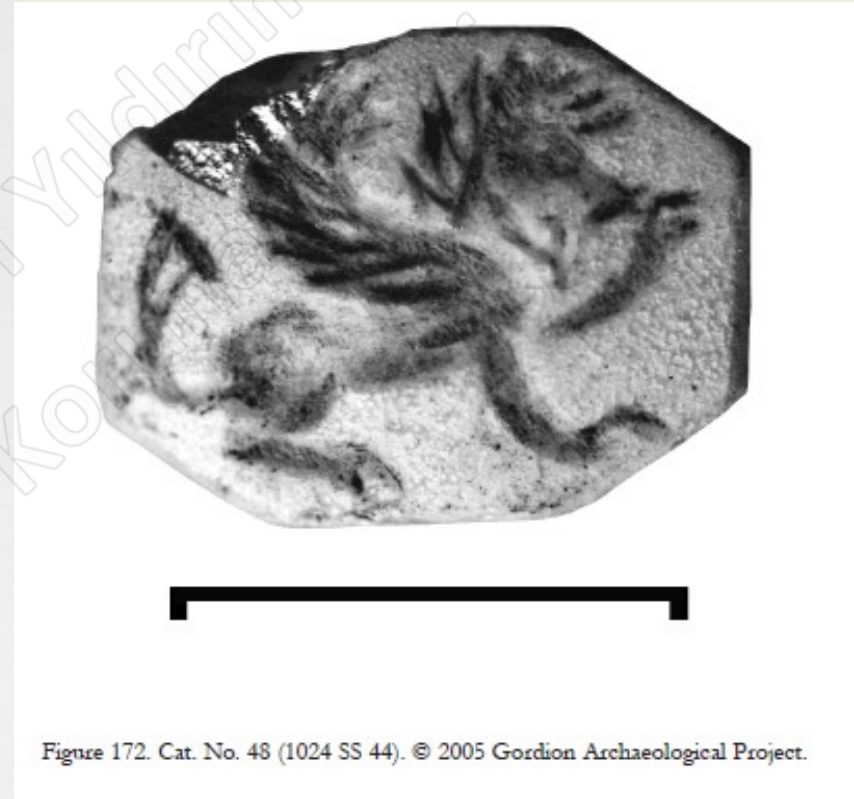


Figure 172. Cat. No. 48 (1024 SS 44). © 2005 Gordion Archaeological Project.

Boğazköy



a



b

320

Nr. 315–320. Jüngerer Neues Reich. Fremde Rollsiegel (Nr. 315, 316). Nicht näher zu datierende Abrollung aus dem 2. Jt. v. Chr. (Nr. 317). Phryger- (Nr. 318, 319) und achaemeniden-zeitliche Rollsiegel (Nr. 320). M. 1:1 (Nr. 315 a, 316 a, 317 a, 318–320) und 2:1.

kaman

Fig. 7 Drawing of Fig. 6



Prof. Dr. Tavrun Yıldırım
© Prof. Dr. Tavrun Yıldırım
Korunan Eser

A.A.M.Müzesi'nde Bulunan Akamenid Mühürleri

LEVHA I

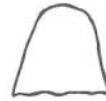
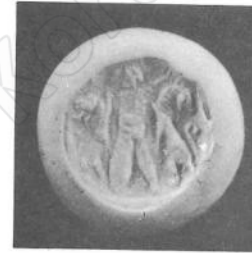
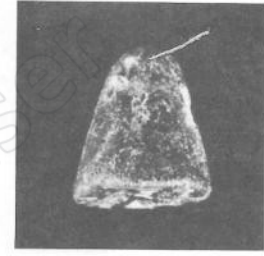
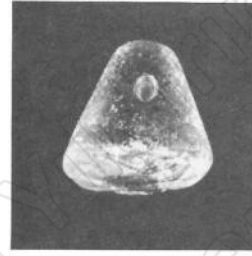


Res. 1 a, b, c



Res. 2 a, b, c

LEVHA II



Res. 3 a, b, c

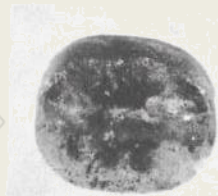


Res. 4 a, b, c

Yağcı,R., 1993



Res. 5 a, b, c



Res. 6 a, b,



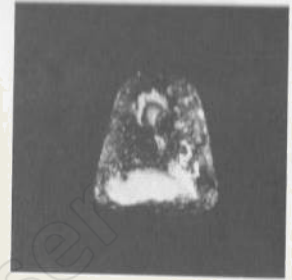
Res. 7 a, b, c



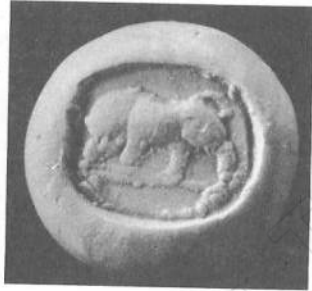
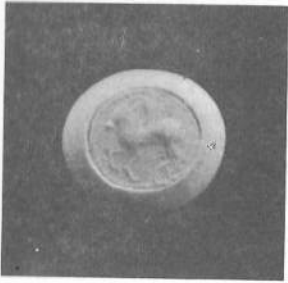
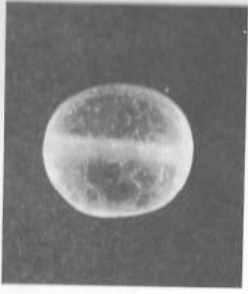
Res. 8 a, b, c



Res. 9 a, b, c



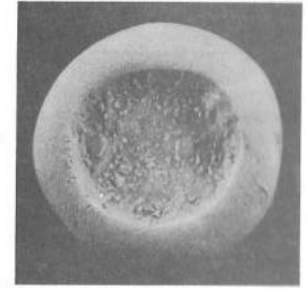
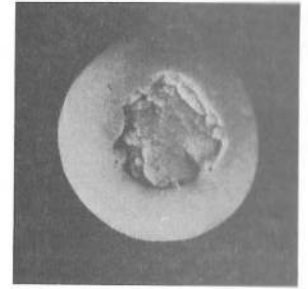
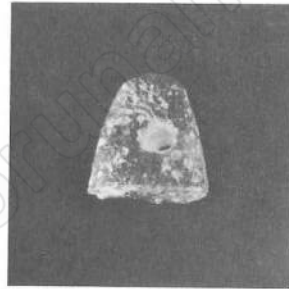
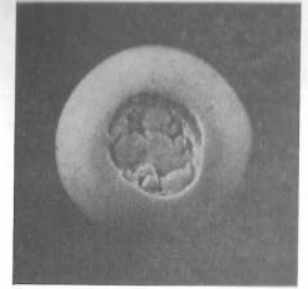
Res. 10 a, b, c



Res. 14 a, b, c



Res. 15 a, b, c



Res. 16 a, b (üst)

Res. 17 a, b (orta)

Res. 18 a, b (alt)



a



f



b



g



c



d



e



h



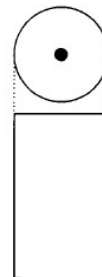
i



j



l



n

PERSEPOLIS

II

CONTENTS OF THE TREASURY AND OTHER DISCOVERIES

ERICH F. SCHMIDT



PT 4 673



PT 4 652

Seal No. 1



PT 4 658



PT 4 726

Seal No. 2



PT4 860



PT4 331 (end view)



PT4 331 (side view)

Seal No. 3

IMPRESSIONS OF CYLINDER SEALS (NOS. 1-3) ON TABLETS. SCALE, 2:1
HERO TRIUMPHANT, DARIUS INSCRIPTIONS



PT4 332



PT4 601

Seal No. 4



PT4 650



PT6 215

Seal No. 5



PT4 332



PT4 601

Seal No. 4



PT4 650



PT6 215

Seal No. 5





PT4 421

Seal No. 25



PT4 443



PT4 702



PT4 758

Seal No. 26

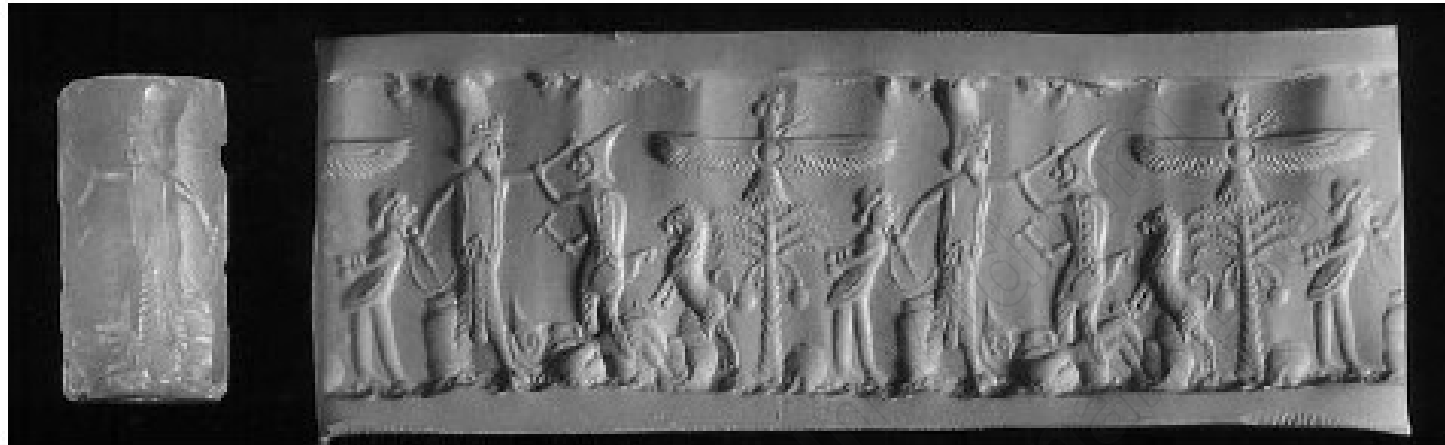


Fig. 2. Cylinder seal, British Museum (Curtis, Tallis 2005, 229, Cat. 415).



Fig. 3. Cylinder seal, Bibliotheque National (Ghirshman 1964, fig. 331).

Near Eastern Seals from the Collection of Martin and Sarah Cherkasky



78



77. Cylinder seal

Iran; Neo-Elamite, 8th–7th century B.C.
Faience; H. 20 mm., Diam. 10 mm.

Humped bull stands before a modified spade and a stylus on an altar. In the sky, a star.

1984.383.20

78. Cylinder seal

Iran; Achaemenid, 6th–5th century B.C.
Agate; H. 24 mm., Diam. 13 mm.

Two men in royal dress worship a deity emerging from a sun disk supported by two sphinxes.

1984.383.24



79

79. Cylinder seal

Iran; Achaemenid, 6th–5th century B.C.
Chalcedony; H. 32 mm., Diam. 16 mm.

Archer in Persian dress shoots a rampant lion attacking a boar. In the sky, a winged sun disk with emerging deity.

1984.383.25



Near Eastern Seals from the Collection of Martin and Sarah Cherkasky

80



81



80. Cylinder seal

Iran; Achaemenid, 6th–5th century B.C.
Chalcedony; H. 25 mm., Diam. 11 mm.

Royal figure in Persian dress as master of animals with his arms extended over the heads of two rampant lions. Terminal perpendicular to main scene: lion attacking caprid.

1985.192.5

81. Cylinder seal

Iran; Achaemenid, 6th–5th century B.C.
Calcite; H. 23 mm., Diam. 10 mm.

Lion with head reversed rears behind a stag with head reversed galloping toward a tree.

1986.311.54

Near Eastern Seals from the Collection of Martin and Sarah Cherkasky

legs thrust forward and arms raised toward a winged sun disk. Below disk, a bird; rope border.

1985.192.33

85. Fist-shaped stamp seal

Northern Syria; peripheral Achaemenid (paralleled at Deve Hüyük), 6th–5th century B.C.
Ceramic; H. 18 mm., Diam. 17 mm.

Attacking lion griffin (winged horned lion?) with outspread wings leaps over a recumbent ibex.

1987.96.36

86. Scaraboid stamp seal with circular face

Syria; peripheral Achaemenid modeled style, 6th–5th century B.C.

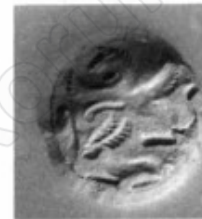
Chalcedony; H. 15 mm., Diam. 22 mm.

Horned lion griffin crouches on a platform in front of a scimitar. In the sky, a crescent.

1984.383.49



85



86



Akamenid / Pers Mühürleri



63

VA 3022 Berlin

Akamenid / Pers Mühürleri



VA 563