

Tasarım Stüdyosu I

Işıl KAYMAZ



Skeç örneđi

Yatay-dikey çizgi etkisi



Peyzaj planı

Renk, gölge, sunum tekniđi



Bitki plan görünümleri

Renk, gölge, sunum tekniği



Skeç örneđi

Gölge, çizgi



Plan

Sunum tekniđi, renk



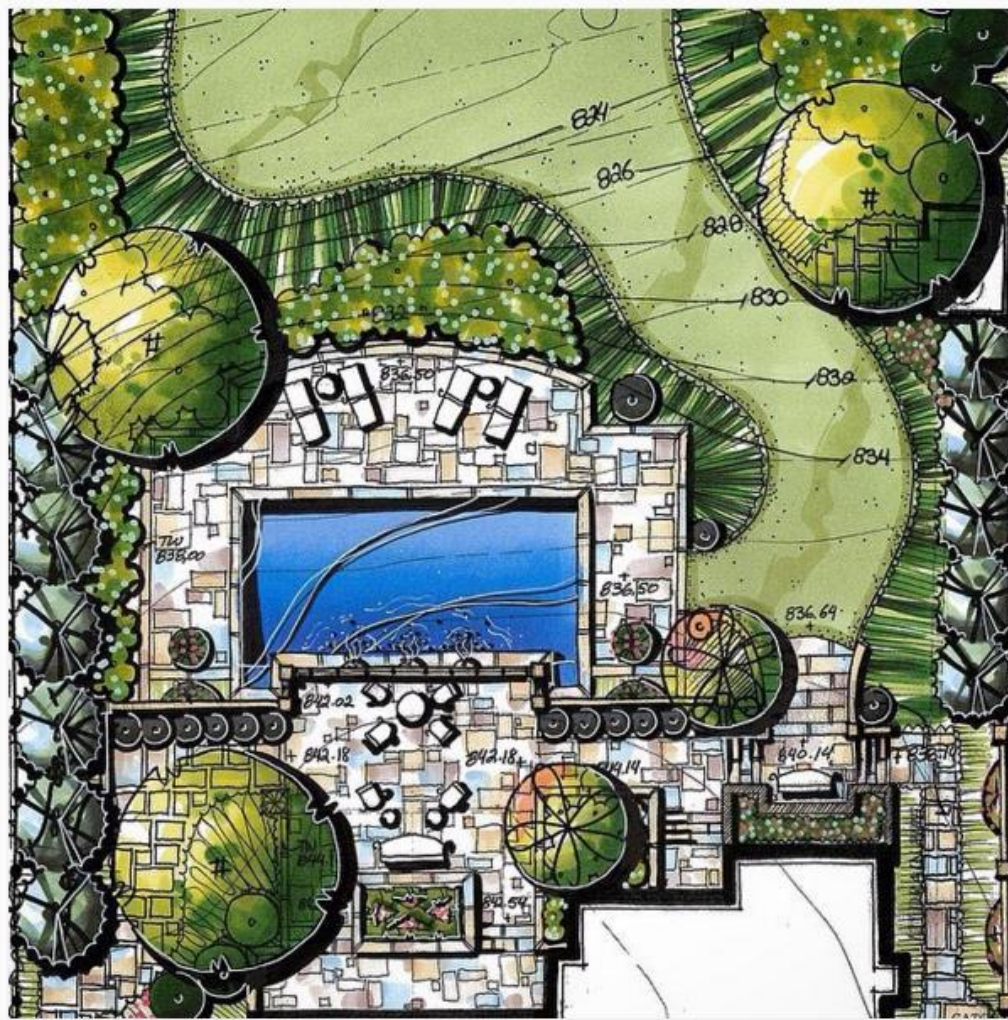
Plan örneđi

Sunum tekniđi, renk, gölgelendirme



Plan örneđi

Farklı kullanımlar için renk



Plan örneđi

Sunum tekniđi, Őeffaflık, kotlar



Plan 6rneęi

G6lgeleendirme



Plan örneđi

Radyal tasarım



Öğrenci çalışması

Projenin farklı boyutları, sunum paftası

natureart & living

The Tannery Row Artist Community

A Non-Profit, Craft & Residential Development

Nature inspires art. The Tannery Row Artist Community backyard habitat concept offers low-impact development solutions to restore the health of the land through re-vegetation and remediation strategies, habitat reclamation and interpretation, and stormwater/flood management. The French Broad River basin, so dear to Wilma Dykeman, is a highly ecologically diverse region, scientists believe that over 10,000 species may live there. Our proposed plan seeks to respond to this diversity by creating areas devoted to providing protective habitats, natural corridors, and food sources, which will serve as a bridge between the French Broad Riverfront and the Tannery Row Artist Community, which in turn contributes inspiration to the artists who will live there.



The Tannery Row Artist Community, showing an artist's studio, and an artist's living space.

The Tannery Row Artist Community is a 6.7-acre non-profit development in Fort Lauderdale, FL, a blend of composite media, business, and completed in 2008, artistpace Southeast Reel Lufftv.complex arts, and was developed with both community and private funding, at a total cost of \$15.7 million.

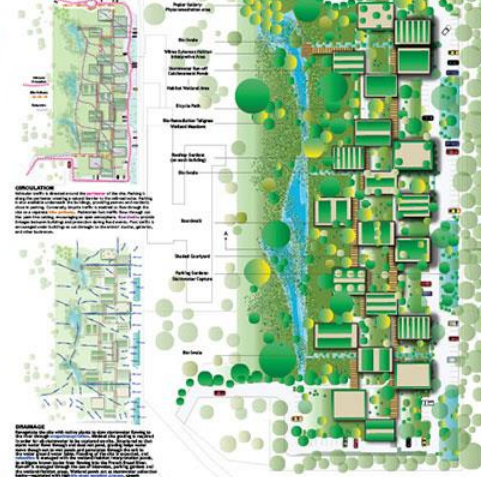


Art and Nature-The Tannery Artist Community will provide creative inspiration, ideas, and nurture the active Asheville lifestyle.



CONCEPTUAL PLAN

The Tannery Row Artist Community is a low-impact development project that provides a natural habitat for the community and offers a range of opportunities for the community to connect with nature. The plan includes a mix of residential, commercial, and public spaces, all designed to be sustainable and resilient. The plan also includes a mix of green spaces, including a large central park and several smaller green spaces throughout the site.



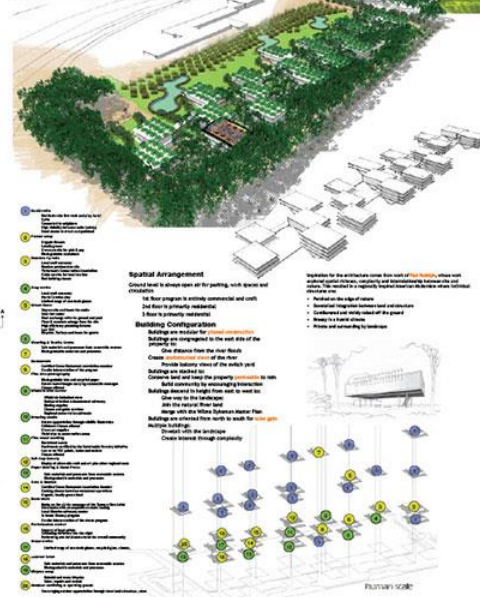
DRAMA
The Tannery Row Artist Community is a low-impact development project that provides a natural habitat for the community and offers a range of opportunities for the community to connect with nature. The plan includes a mix of residential, commercial, and public spaces, all designed to be sustainable and resilient. The plan also includes a mix of green spaces, including a large central park and several smaller green spaces throughout the site.

RESIDENTIAL
The Tannery Row Artist Community is a low-impact development project that provides a natural habitat for the community and offers a range of opportunities for the community to connect with nature. The plan includes a mix of residential, commercial, and public spaces, all designed to be sustainable and resilient. The plan also includes a mix of green spaces, including a large central park and several smaller green spaces throughout the site.

GREEN ROOFS
The Tannery Row Artist Community is a low-impact development project that provides a natural habitat for the community and offers a range of opportunities for the community to connect with nature. The plan includes a mix of residential, commercial, and public spaces, all designed to be sustainable and resilient. The plan also includes a mix of green spaces, including a large central park and several smaller green spaces throughout the site.

PARKING GARAGES
The Tannery Row Artist Community is a low-impact development project that provides a natural habitat for the community and offers a range of opportunities for the community to connect with nature. The plan includes a mix of residential, commercial, and public spaces, all designed to be sustainable and resilient. The plan also includes a mix of green spaces, including a large central park and several smaller green spaces throughout the site.

HUMAN HABITATION



PLANTING SCHEMATIC
The Tannery Row Artist Community is a low-impact development project that provides a natural habitat for the community and offers a range of opportunities for the community to connect with nature. The plan includes a mix of residential, commercial, and public spaces, all designed to be sustainable and resilient. The plan also includes a mix of green spaces, including a large central park and several smaller green spaces throughout the site.

HABITAT CREATION, RE-USE, & THE OUTDOOR LIFESTYLE

Healthy earth. Increase awareness of the diverse ecosystems along the French Broad River and provide habitat for critical flora and fauna. This can be accomplished by using native plants to encourage wildlife corridors and diversify the riparian habitat and diverse plant species. Inhabiting and Western North Carolina, providing interpretive kiosks, thereby inspiring people to do the same in their own yards, contributing to wildlife corridors throughout the Asheville area, decrease risks exotic plant species, while supporting native pollinators.

- Native plants
- Native plants used for protection
- Native plants used for protection
- Native plants used for protection
- Native plants used for protection



Native Plants
The Tannery Row Artist Community is a low-impact development project that provides a natural habitat for the community and offers a range of opportunities for the community to connect with nature. The plan includes a mix of residential, commercial, and public spaces, all designed to be sustainable and resilient. The plan also includes a mix of green spaces, including a large central park and several smaller green spaces throughout the site.

Öğrenci çalışması

Tasarımda farklı boyutların sunumu



Waterfront Park

Design Elements



Amphitheater

A flexible-use social space for large scale community events and a unique vista across the site when not in use.



Playground

A children's adventure playground composed of historical elements that emulate memories of the site's industrial past.



Biofiltration

An ecological water system to purify rainwater from the site neighboring and transporting to the retention pool.



Retention Pool

An opportunity for vibrant year-round activities including skating during winter in addition to functioning as a retention pool.



Transportation Hub

A link providing catalytic open space and attracting people to the park.



Historical Walk

A pedestrian-oriented environment, assisting the reuse of tracks which were used as industry purposes, enables reminiscence of a trace in the past.



Transportation Hub
The view from the station let commuters briefly explore the park with wonder.



Amphitheater
It offers people refreshment and provide a stage to experience a sense of belonging. When the show begins, park begins.



Retention (Summer)
The retention becomes one of the key elements during summer, serving as a recreational space to the people. Deep water welcomes all ages to play and enjoy.

Retention (Winter)
It transforms to an ice rink during winter. The retention keeps people through out the year.

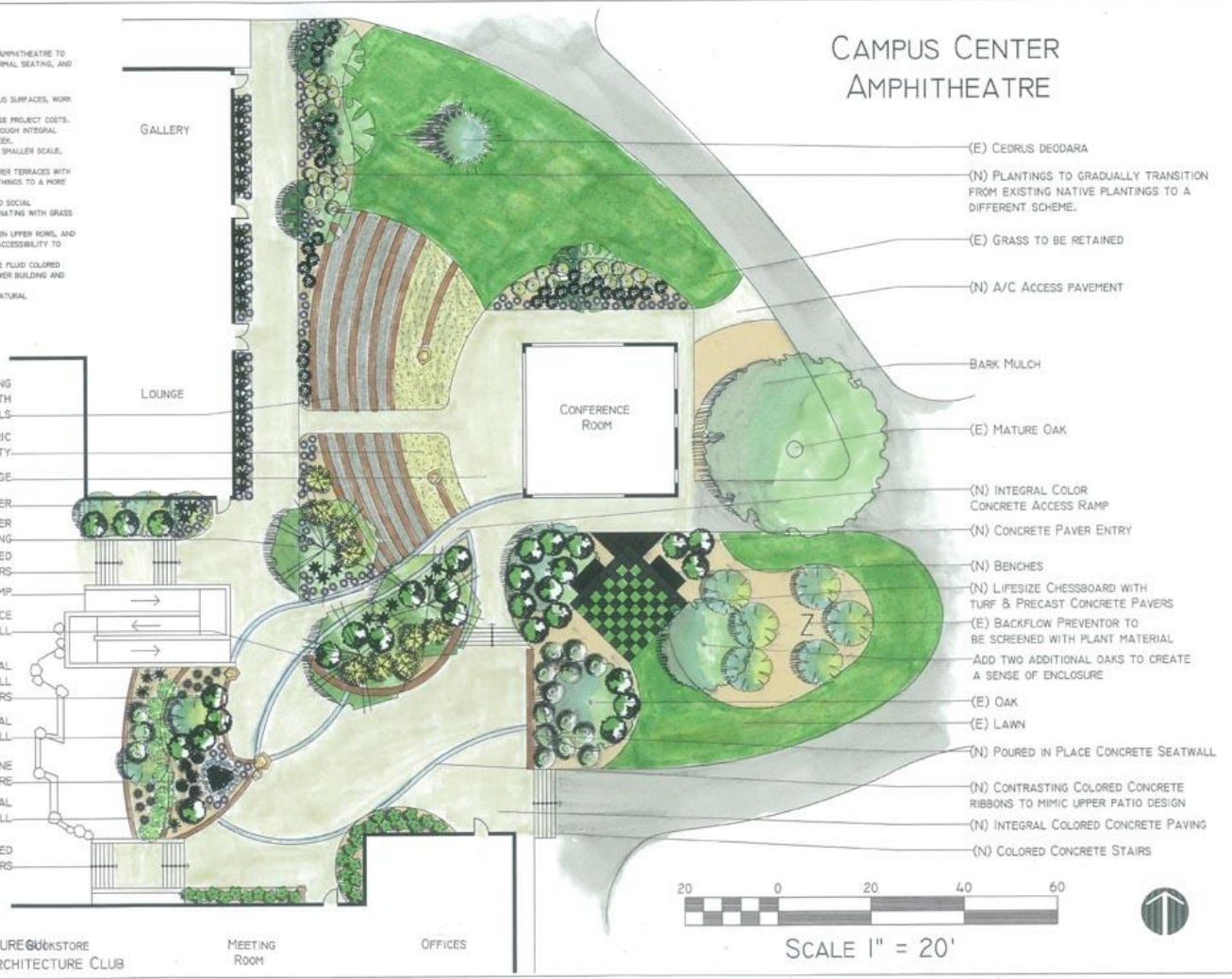


Bridge View
It opens the perspective to the large frame of park. The reference of the perspective level conveys the new experiences to people.

CAMPUS CENTER AMPHITHEATRE

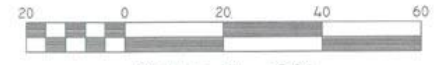
CONCEPT STATEMENT:
 CREATE AN MULTI-USE OUTDOOR ENVIRONMENT INCLUDING OUTDOOR AMPHITHEATRE TO DOUBLE AS OUTDOOR CLASSROOM, SPACE FOR CLUB ACTIVITIES, INFORMAL SEATING, AND SOCIALIZING.

PROGRAM ELEMENTS:
 MAINTAIN OR DECREASE EXISTING RATIOS OF PERVIOUS TO PERVIOUS SURFACES, WORK WITHIN THE PROJECT BUDGET, AND CREATE A SENSE OF PLACE.
 MAINTAIN THE EXISTING CONCRETE ACCESSIBILITY RAMP TO DECREASE PROJECT COSTS. CONTINUE THEME OF CONTRASTING COLORED CONCRETE RIBBONS THROUGH INTEGRAL COLORED CONCRETE TO REPRESENT THE FLOWING WATER OF THE CREEK.
 REMOVE THE EXISTING WATER FEATURE AND REPLACE WITH A MUCH SMALLER SCALE, LOWER MAINTENANCE, PONDLESS WATER FEATURE.
 REPLACE EXISTING 6' RETAINING WALL SEPARATING UPPER AND LOWER TERRACES WITH TWO INTERMEDIATE LEVELS TO GRADUALLY TRANSITION AND BRING THINGS TO A MORE HUMAN SCALE.
 HUMAN SCALE CHECKERBOARD PROVIDES SPACE FOR RECREATION AND SOCIAL INTERACTION. LIFE SIZE PRECAST COLORED CONCRETE PAVERS ALTERNATING WITH GRASS OR GROUNDCOVER TO PROVIDE PERMEABILITY.
 AMPHITHEATRE SEATWALLS TO BE PERVIOUS GRAVEL PAVING BETWEEN UPPER ROWS, AND COMPACTED CRUSHED GRANITE WITH A BINDING AGENT TO PROVIDE ACCESSIBILITY TO LOWER LEVELS.
 SOUTH OF AMPHITHEATRE, A GENTLY SLOPED RAMP BOUNDED BY THE FLUID COLORED CONCRETE RIBBONS PROVIDES ANOTHER ACCESS POINT FROM THE LOWER BUILDING AND AMPHITHEATRE TO LOWER PATIO AREA.
 PLANTING TO BE LOW MAINTENANCE NATIVES TO BLEND INTO THE NATURAL ENVIRONMENT.



- (N) AMPHITHEATRE STYLE SEATING
POURED IN PLACE CONCRETE SEATWALLS WITH
1/4" GRAVEL PAVING BETWEEN WALLS
- CRUSHED GRANITE PAVING WITH POLYMERIC
BINDING AGENT FOR ACCESSIBILITY.
- (N) COLORED CONCRETE STAGE
- (E) RAISED PLANTER
- (N) DECIDUOUS TREE CLUSTER
FOR AFTERNOON SHADING
- (N) INTEGRAL COLORED
CONCRETE STAIRS
- (E) ACCESSIBILITY RAMP
- (N) 18" HT. POURED IN PLACE
INTEGRAL COLOR CONCRETE SEATWALL
- (N) 18" HT. POURED IN PLACE INTEGRAL
COLORED CONCRETE RETAINING/SEATWALL
WITH INSET BOULDERS
- (N) 4' HT. POURED IN PLACE INTEGRAL
COLORED CONCRETE RETAINING WALL
- (N) CORE-DRILLED STONE
PONDLESS WATERFEATURE
- (N) 6' HT. POURED IN PLACE, INTEGRAL
COLORED CONCRETE RETAINING WALL
- (N) INTEGRAL COLORED
CONCRETE STAIRS

- (E) CEDRUS DEODARA
- (N) PLANTINGS TO GRADUALLY TRANSITION
FROM EXISTING NATIVE PLANTINGS TO A
DIFFERENT SCHEME.
- (E) GRASS TO BE RETAINED
- (N) A/C ACCESS PAVEMENT
- BARK MULCH
- (E) MATURE OAK
- (N) INTEGRAL COLOR
CONCRETE ACCESS RAMP
- (N) CONCRETE PAVER ENTRY
- (N) BENCHES
- (N) LIFESIZE CHESSBOARD WITH
TURF & PRECAST CONCRETE PAVERS
- (E) BACKFLOW PREVENTOR TO
BE SCREENED WITH PLANT MATERIAL
-ADD TWO ADDITIONAL OAKS TO CREATE
A SENSE OF ENCLOSURE
- (E) OAK
- (E) LAWN
- (N) POURED IN PLACE CONCRETE SEATWALL
- (N) CONTRASTING COLORED CONCRETE
RIBBONS TO MIMIC UPPER PATIO DESIGN
- (N) INTEGRAL COLORED CONCRETE PAVING
- (N) COLORED CONCRETE STAIRS



CREATED BY KIM LEICHTNER & TINA JAUREGUI
 WEST VALLEY COLLEGE LANDSCAPE ARCHITECTURE CLUB

MEETING ROOM OFFICES

Plan

Site Character and Constraints

SW Montgomery Green Street Connecting the West Hills to the Willamette River



TRANSITION **ACTIVE** **PASSIVE** **ACTIVE** **TRANSITION** **ACTIVE** **TRANSITION** **PASSIVE** **PASSIVE**

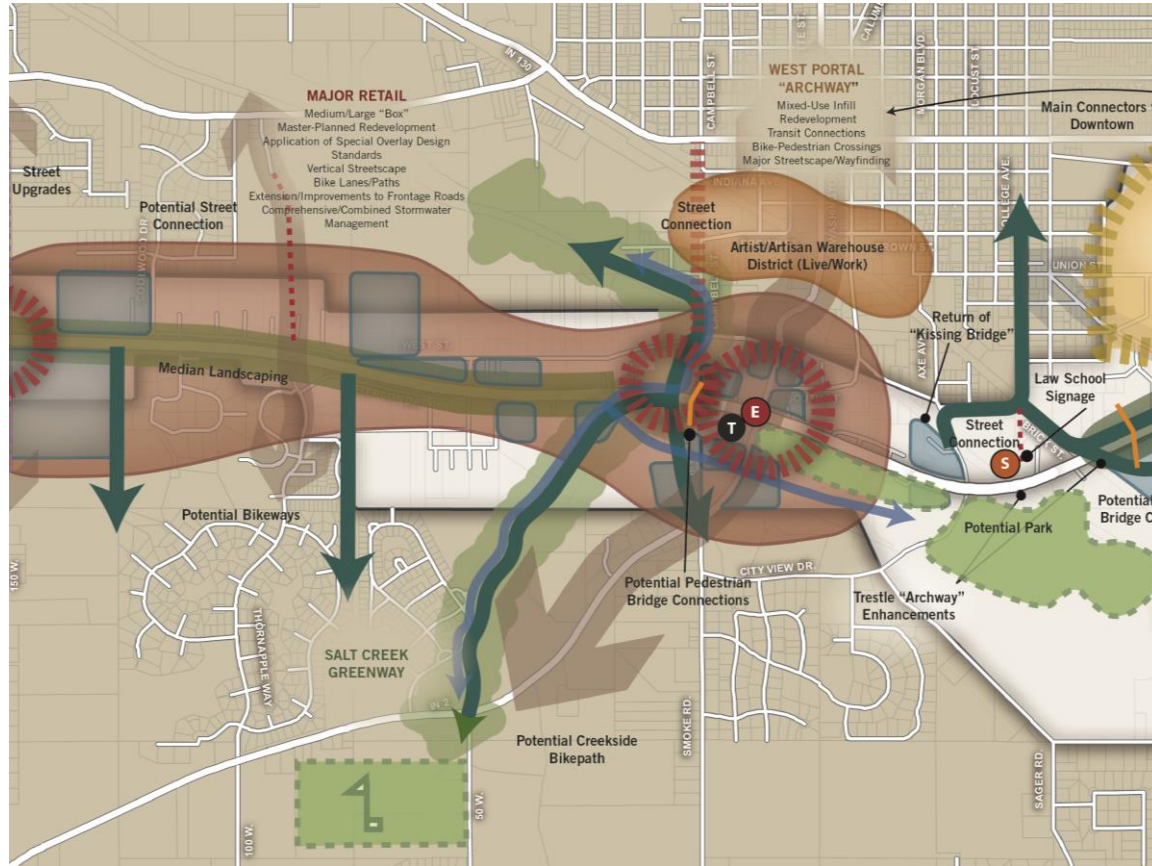
- Narrow pedestrian flow
- Narrow 30 foot R.O.W.
- Building interrupts pedestrian spine
- Large private impervious area drains to R.O.W. Private landowner recently remodeled entry court
- Large existing trees
- Historic park blocks. May be difficult to change paving/grading
- Grades move runoff to center of street
- Underground structures
- Significant pedestrian and bicycle access needed
- SW Broadway inhibits pedestrian flow
- Trucks and delivery vehicles conflict with pedestrians
- Existing lawn area is underutilized
- Skybridges create a cavernous and overbearing mood
- Light rail lines on SW 6th and 5th Avenues precludes stormwater management along these streets
- Urban plaza is barren, lacks green space and is completely impervious
- Major transit hub is a jumble of rail and paving infrastructure
- Streetcar alignment along SW Montgomery inhibits pedestrian flow
- SW 4th inhibits pedestrian flow
- Existing pedestrian corridor is neglected and not maintained
- Existing stairs built in this section of the Halprin sequence are deemed historic, but are not ADA accessible
- May be difficult and undesirable to change elements of historic Pettygrove Park



The character of SW Montgomery Street is eclectic by nature. The corridor links a diverse collection of spaces from the verdant, contemplative Pettygrove Park to the cutting-edge sustainable design surrounding the Oregon Sustainability Center. The SW Montgomery Green Street seeks to preserve and enhance the unique spaces along the corridor and provide strong connections to surrounding amenities. However, like most downtown stormwater retrofit conditions, there are a variety of urban design and stormwater management site constraints that the design team needed to address.

Karakter analizi

Sokak peyzaji



Alan analizi



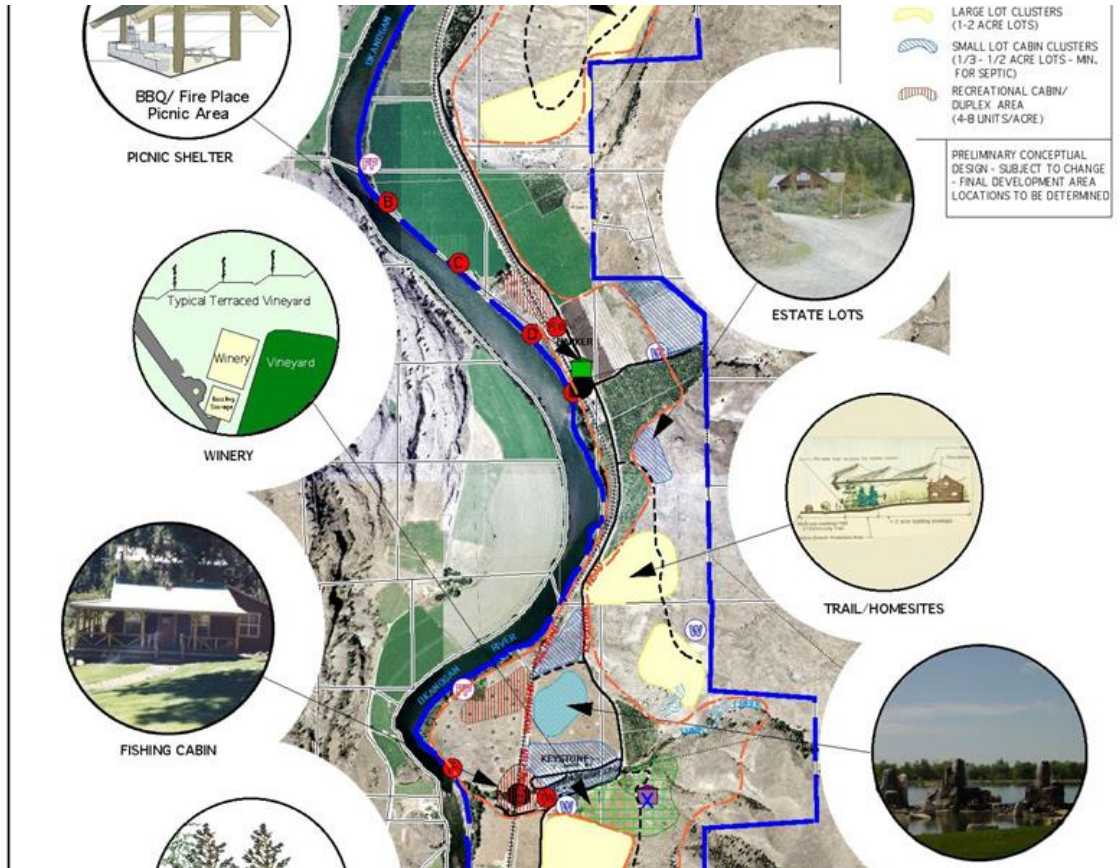
Alan analizi

Ulaşım, yaya-araç sirkülasyonu (birincil ve ikincil), bloke görüş, açık görüş, açık alan, oyun alanı

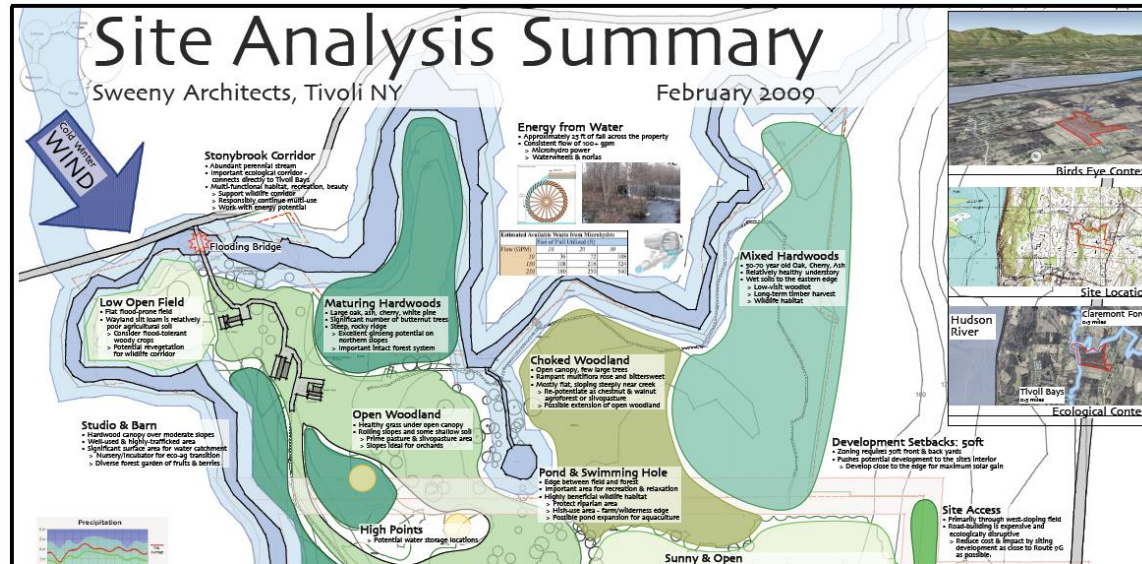


Alan analizi

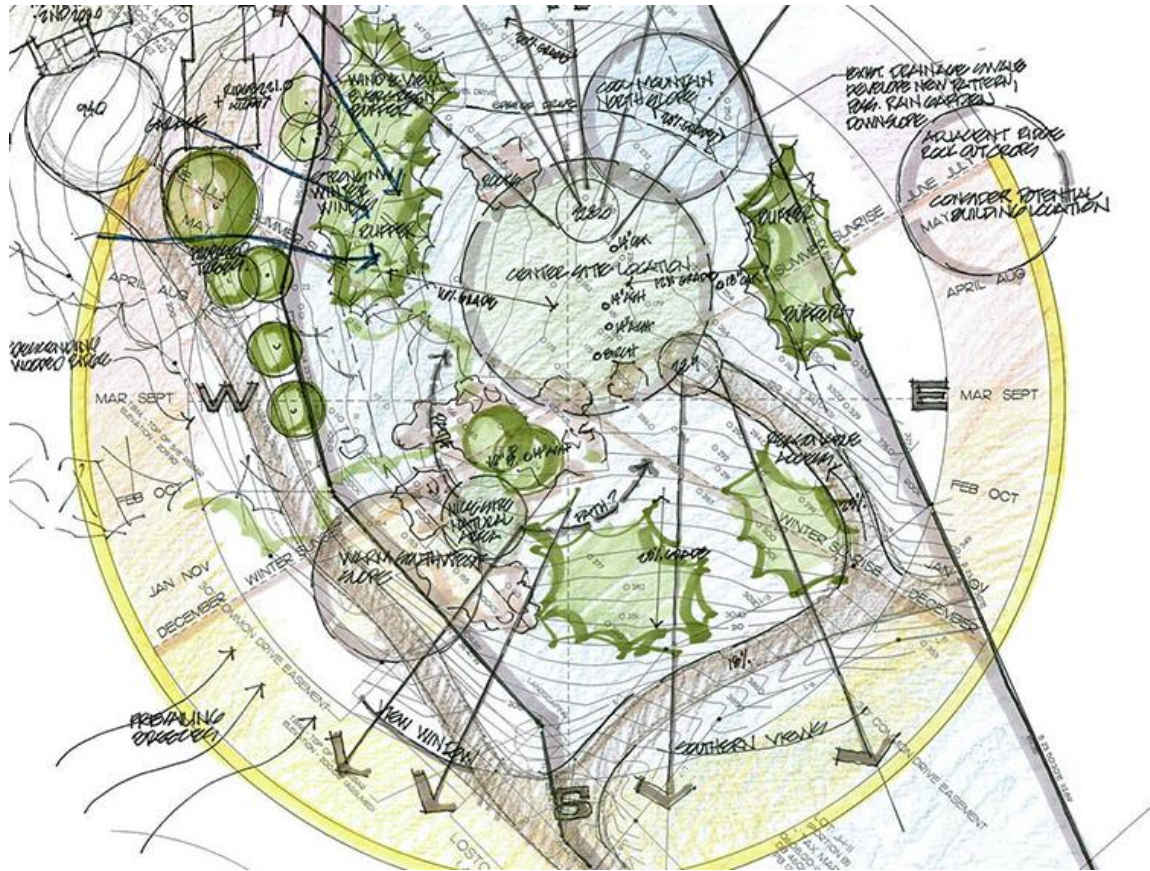
Kullanım tipi, mikro ve makro iklim özellikleri, geçişler



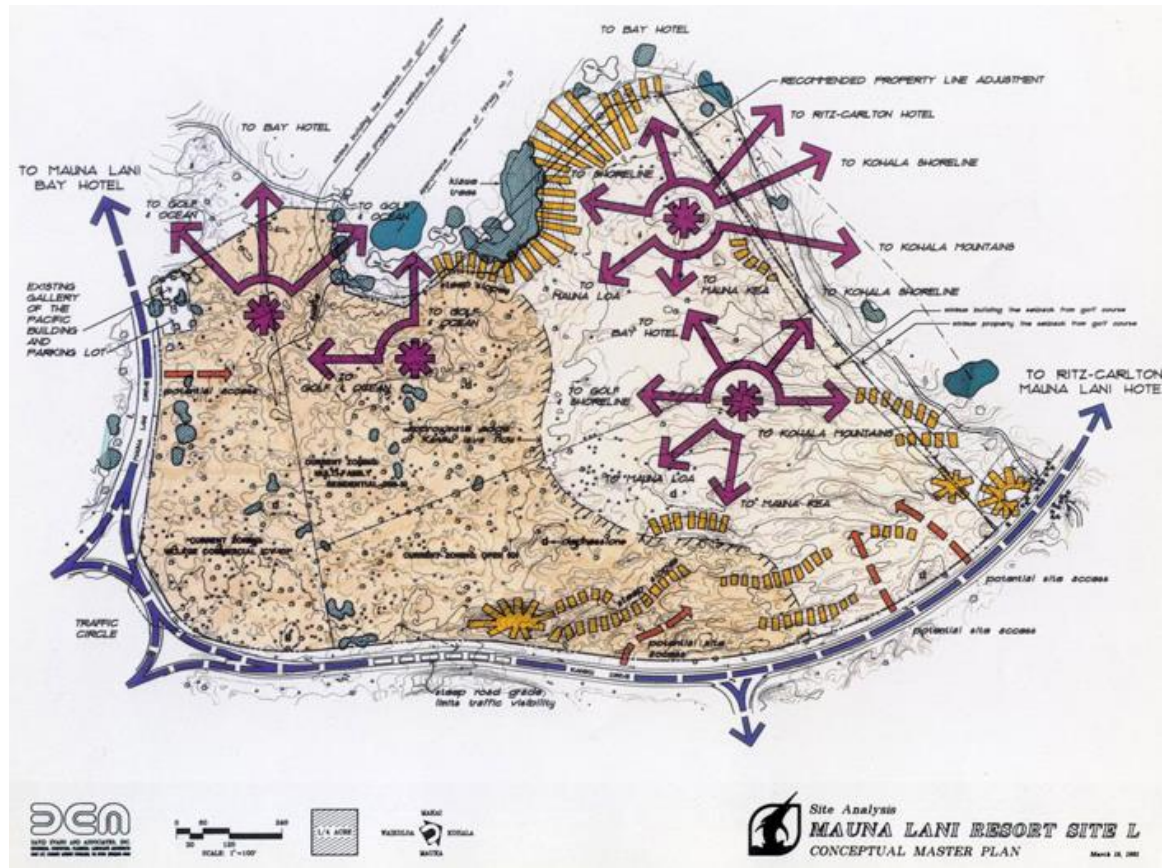
Kullanım tipleri



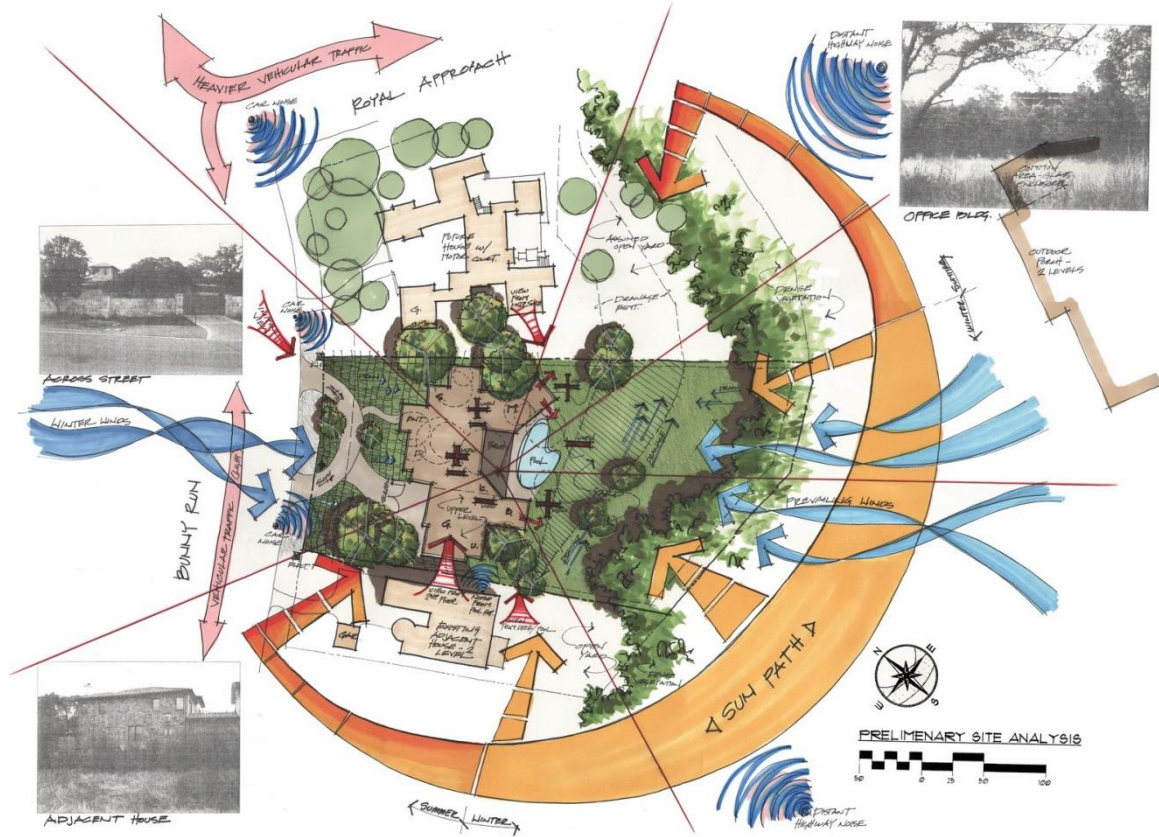
Alan analizi



Alan analizi



Alan analizi



SURROUNDING NATURE

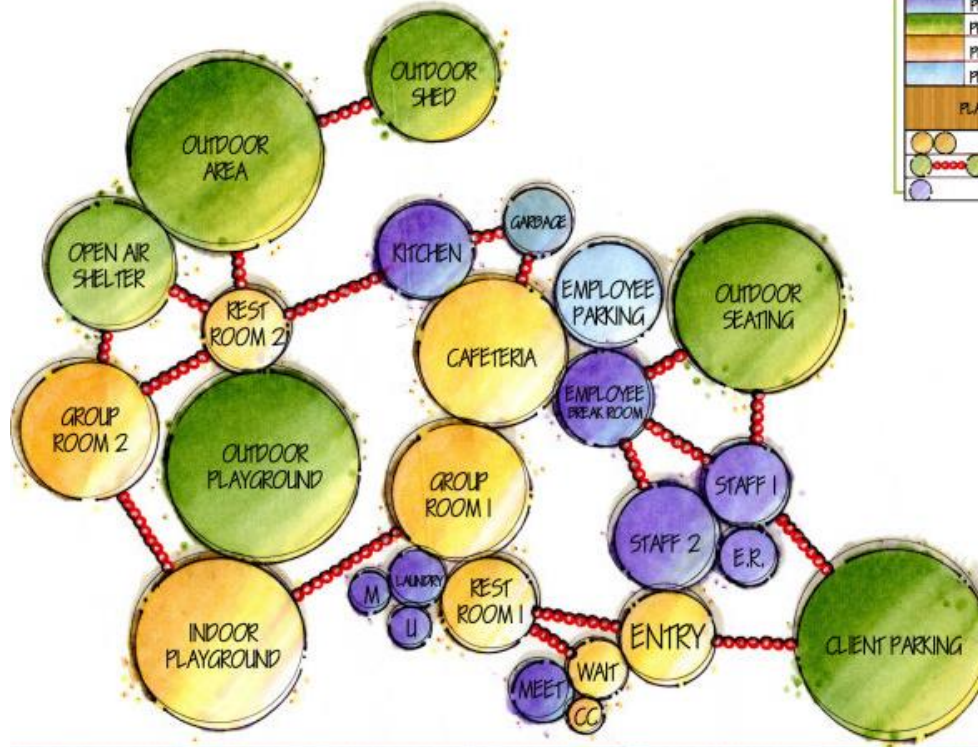
UKHUMVIT 38 & 40



- Key
- Trees
 - Groundcovers
 - Shrubs
 - Palm
 - Herbs
 - Vines

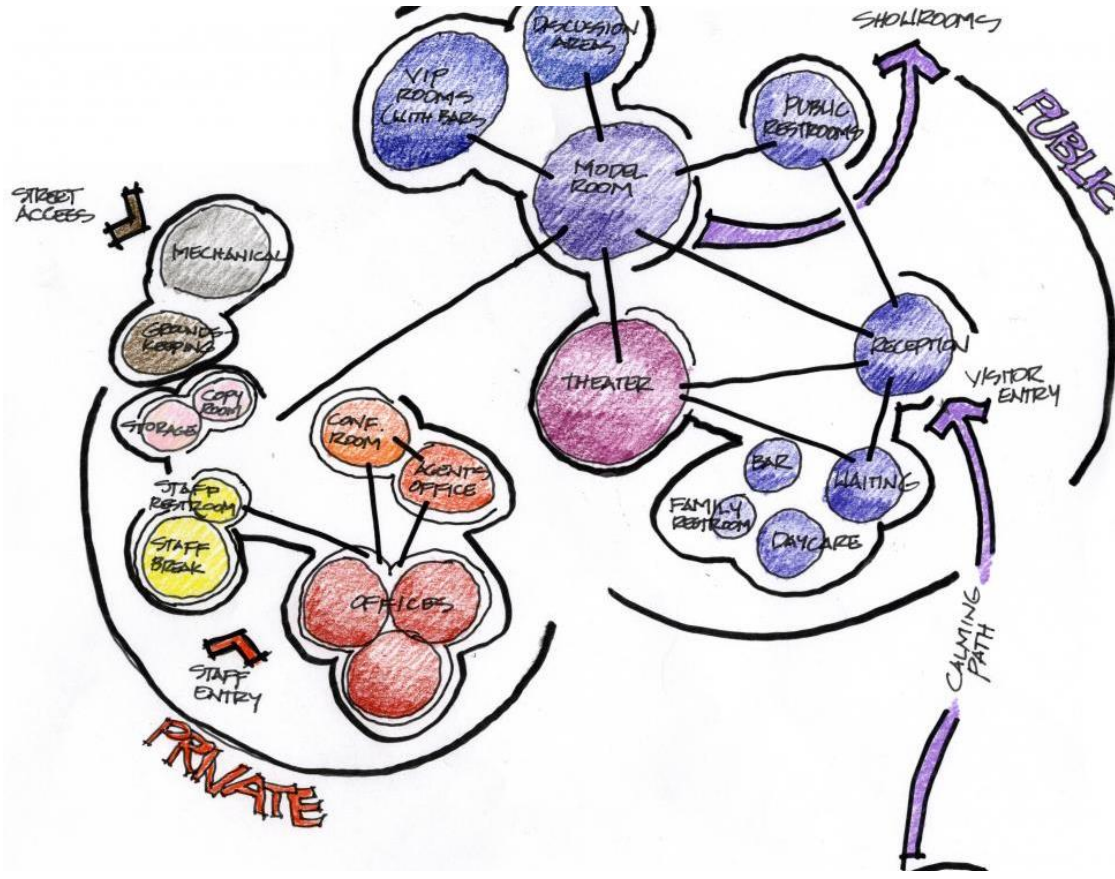
Bitkisel sörvey

SPACE ADJACENCY ANALYSIS FOR LI'L EXPLORERS



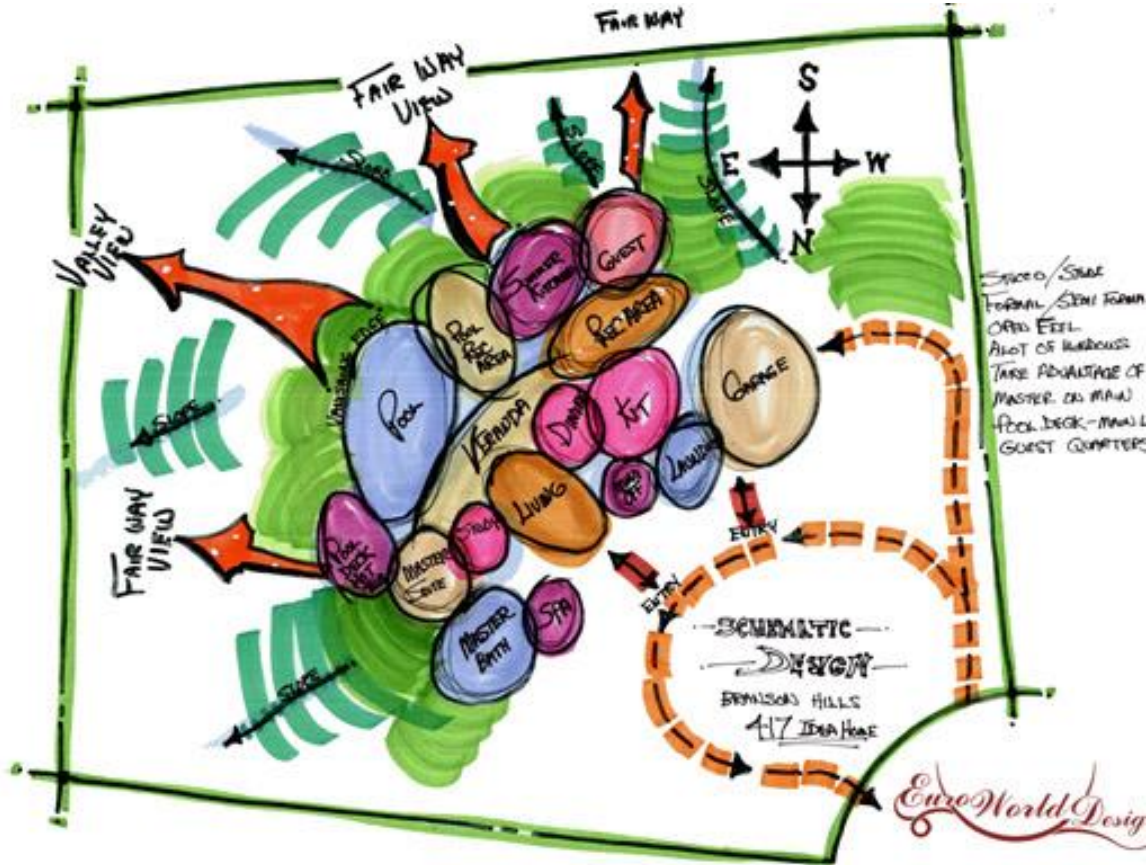
Bubble diyagram

Kullanımlar ve ilişkileri



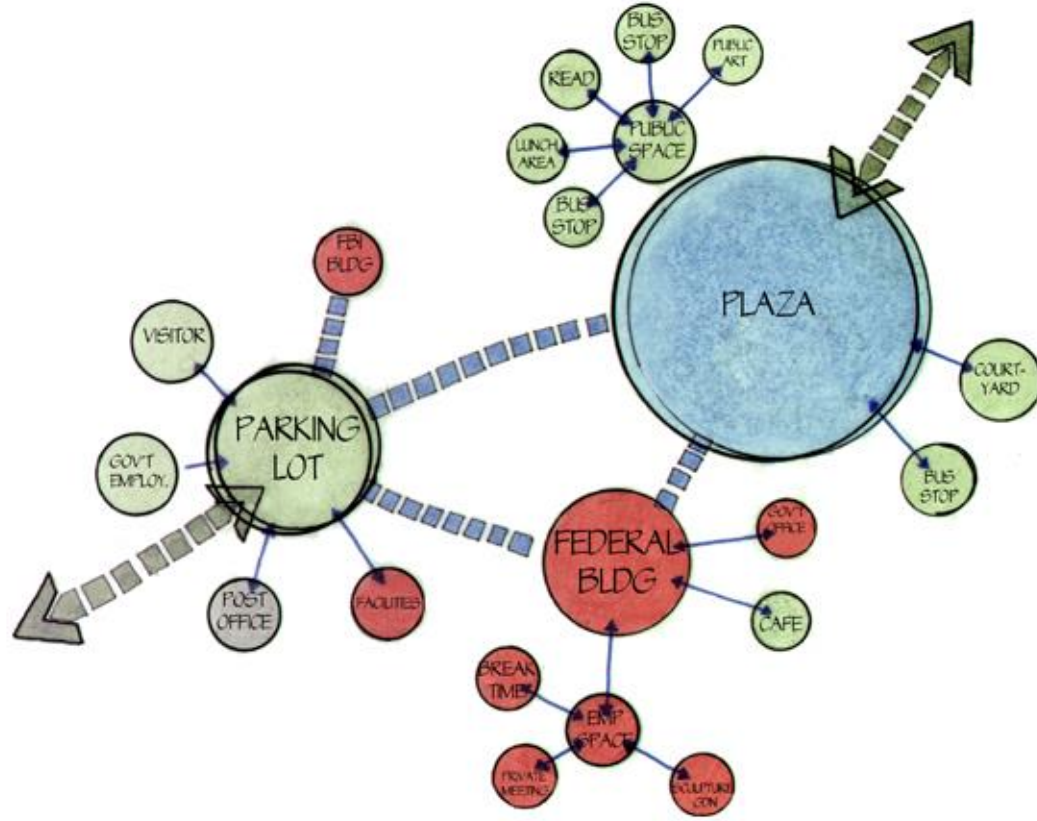
Bubble diyagram

Kullanımlar ve ilişkileri



Bubble diyagram

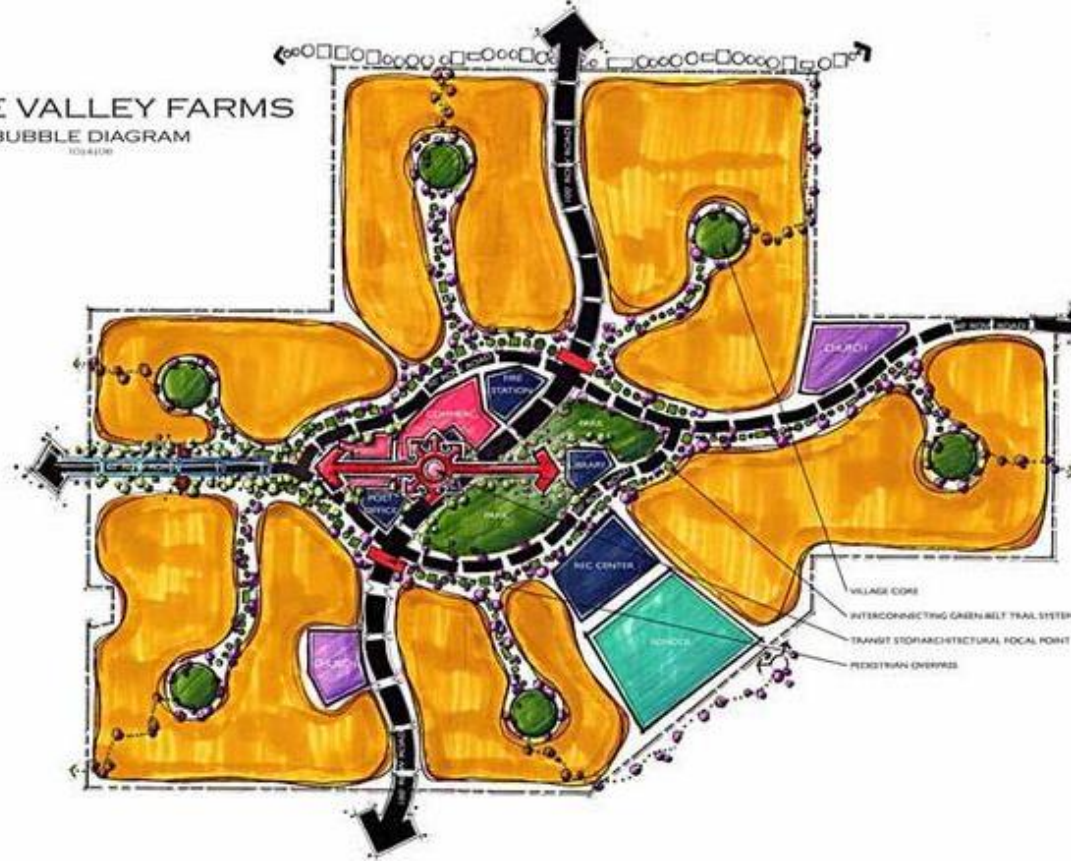
Kullanımlar ve ilişkileri



Bubble diyagram

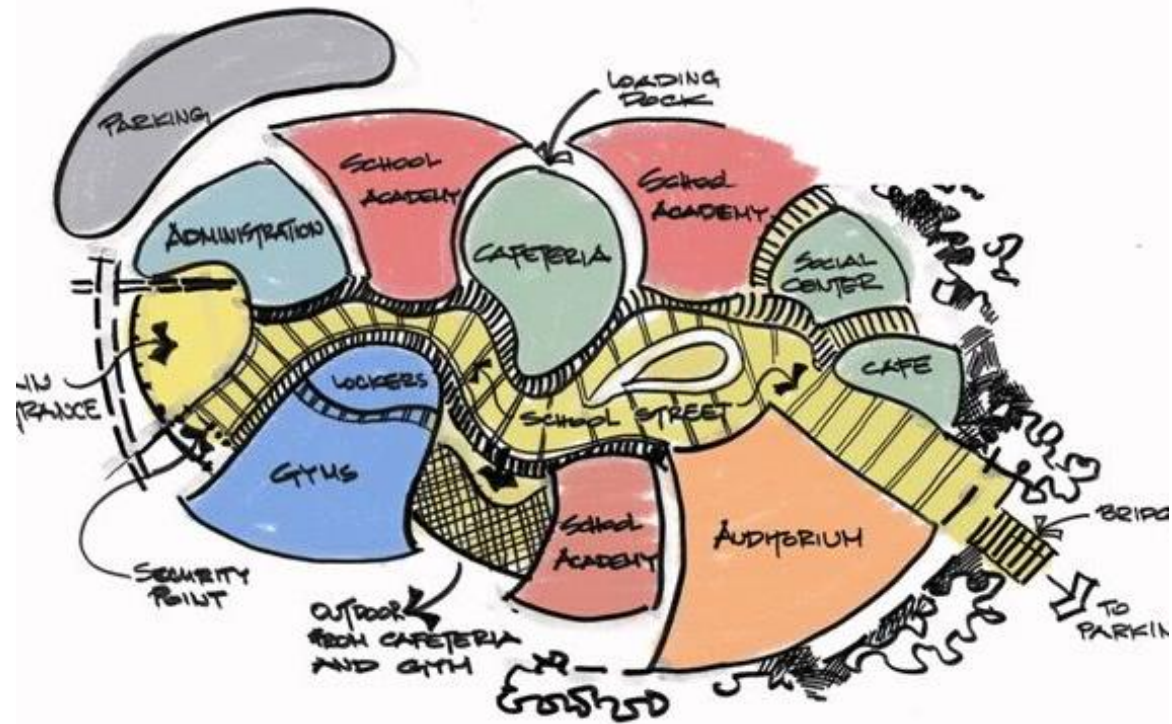
Kullanımlar ve ilişkileri

TITLE VALLEY FARMS
BUBBLE DIAGRAM
10/4/06

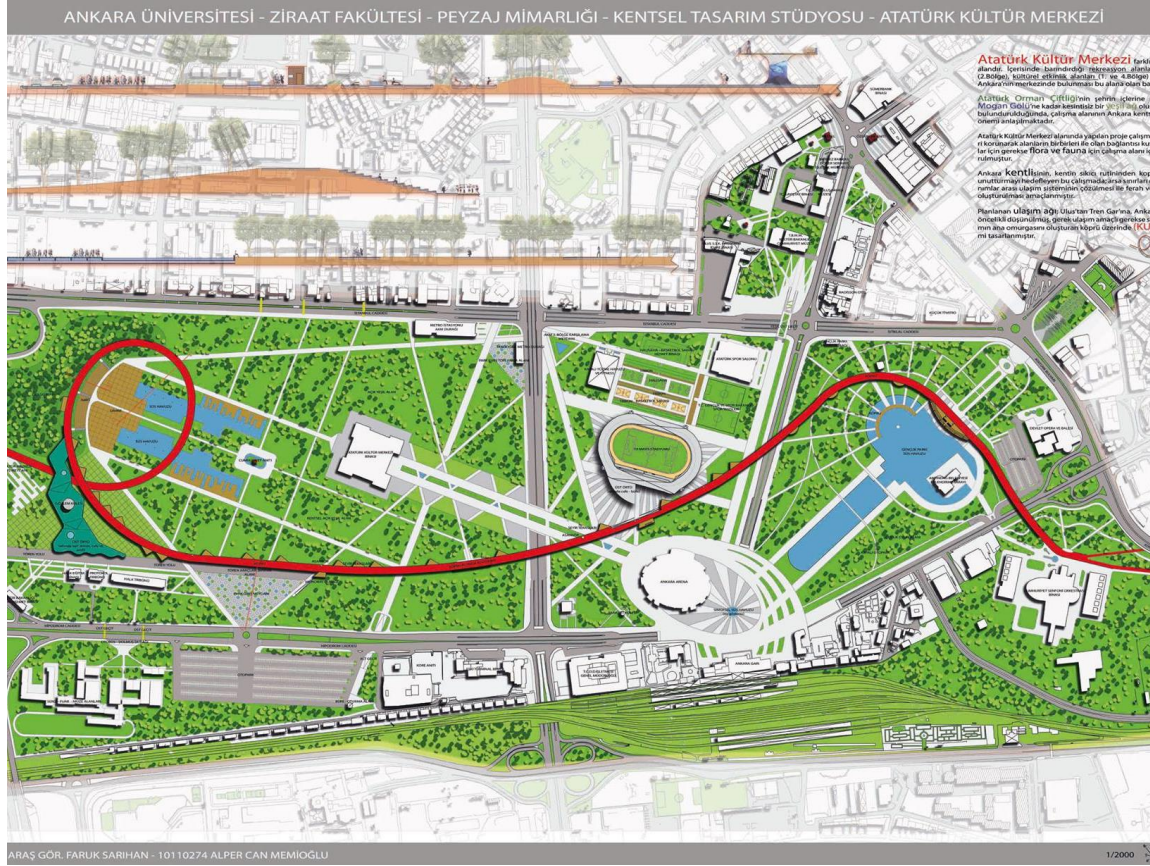


Bubble diyagram

Kullanımlar ve ilişkileri



Leke plan



Öğrenci çalışması

ATATÜRK KÜLTÜR MERKEZİ KENTSEL TASARIM PAFTASI



Öğrenci çalışması

Ölçeklere göre detaylar

1/1000

Yaya ve araç yolu ayrımı, giriş çıkışlar, bitkiler grup halinde, kotlar,

1/500

Yaya ve araç yolu ayrımı, giriş çıkışlar, bitkiler grup halinde (ibreli-yapraklı ayrımı yapılabilir), basamak çıkış yönleri, kotlar

1/200

Yaya ve araç yolu ayrımı, giriş çıkışlar, bitkiler grup ya da tek tek çizilebilir, donatı elemanları; banklar, çöp kutusu, aydınlatma elemanları vb.yerleri, basamaklar, kotlar

Peyzaj projesini tamamlayan uygulamaya yönelik iki bileşen;

Bitkisel uygulama PLANI: Bitkilerin dikim noktaları, sınıflandırarak listeleri, adetleri, gövde kalınlığı, çim karışımları vb.

Yapısal uygulama PLANI: Bitkiler çıkarılmadan da hazırlanır, kotlar, merdiven çıkış yönü, duvar yüksekliği, basamak yüksekliği, dönüş yarıçapları, otopark ölçüleri, vb.