

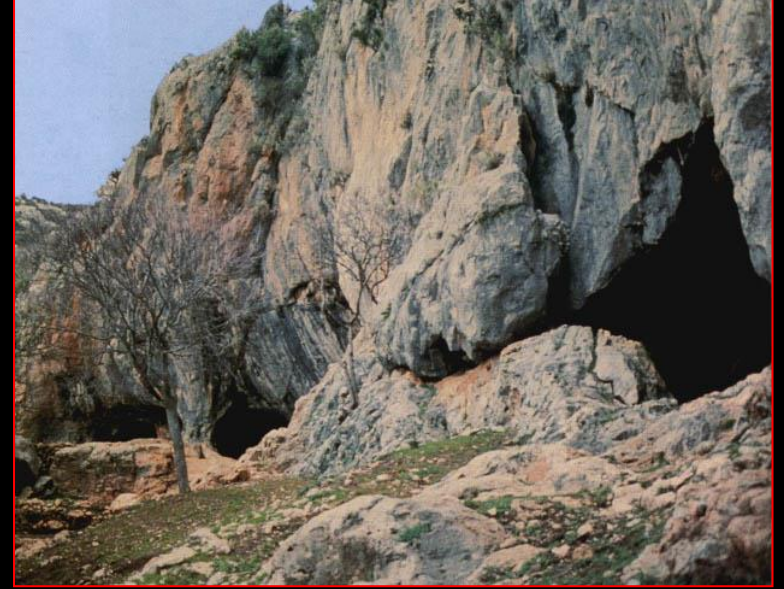
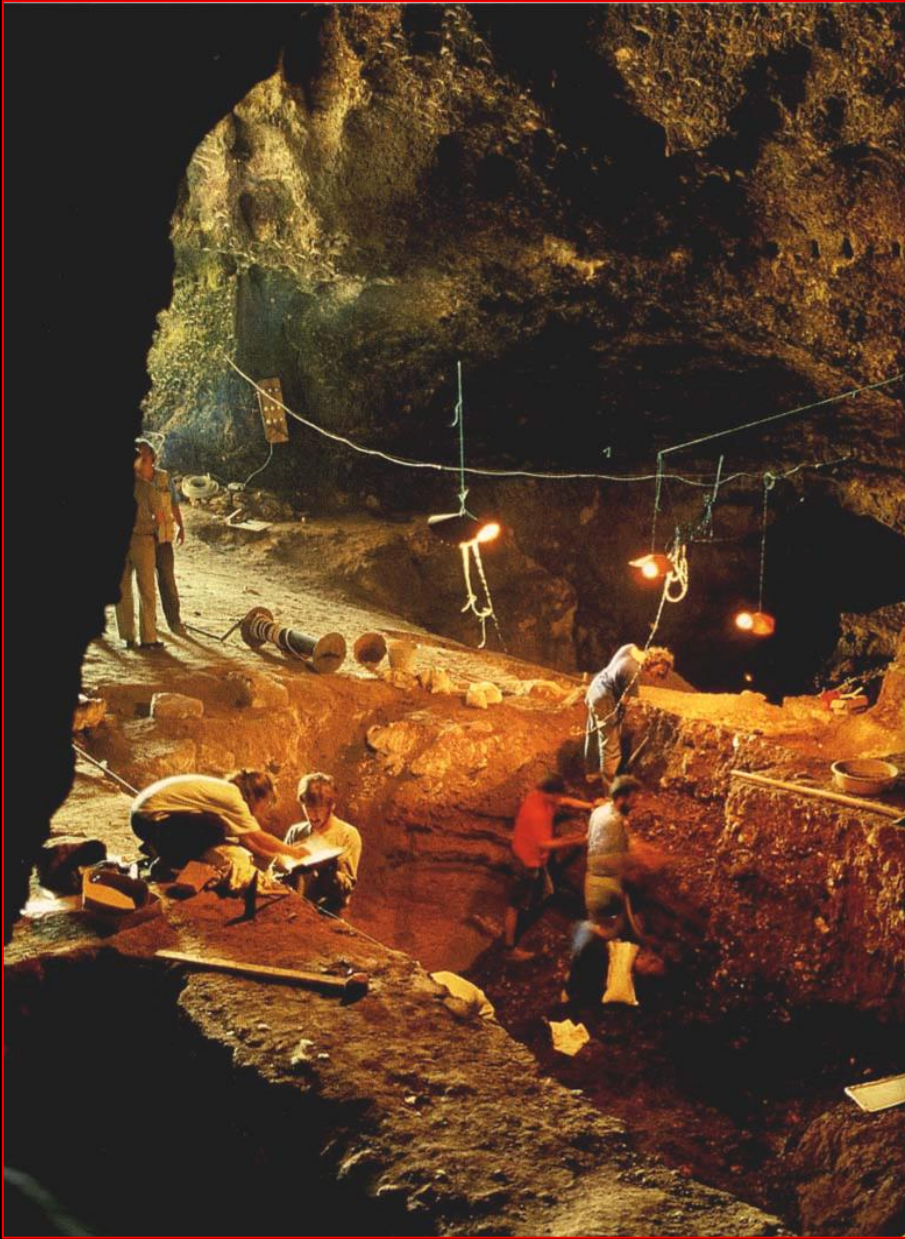
ANADOLU UYGARLIKLARI
VE
ANADOLU MEDENİYETLERİ
MÜZESİ





Fosiller- ANKARA

225 -190 Milyon Yıl önce



Yarımburgaz Mağarası
İSTANBUL

Anadolu'da bazı antik şehirler





Göbeklitepe - ŞANLIURFA





Aslanlı Kabartma - Göbekli Tepe – ŞANLIURFA

YONTMA TAŞ DÖNEMİ

M.Ö.10.000 - 7.000



El Baltaları



Aletler

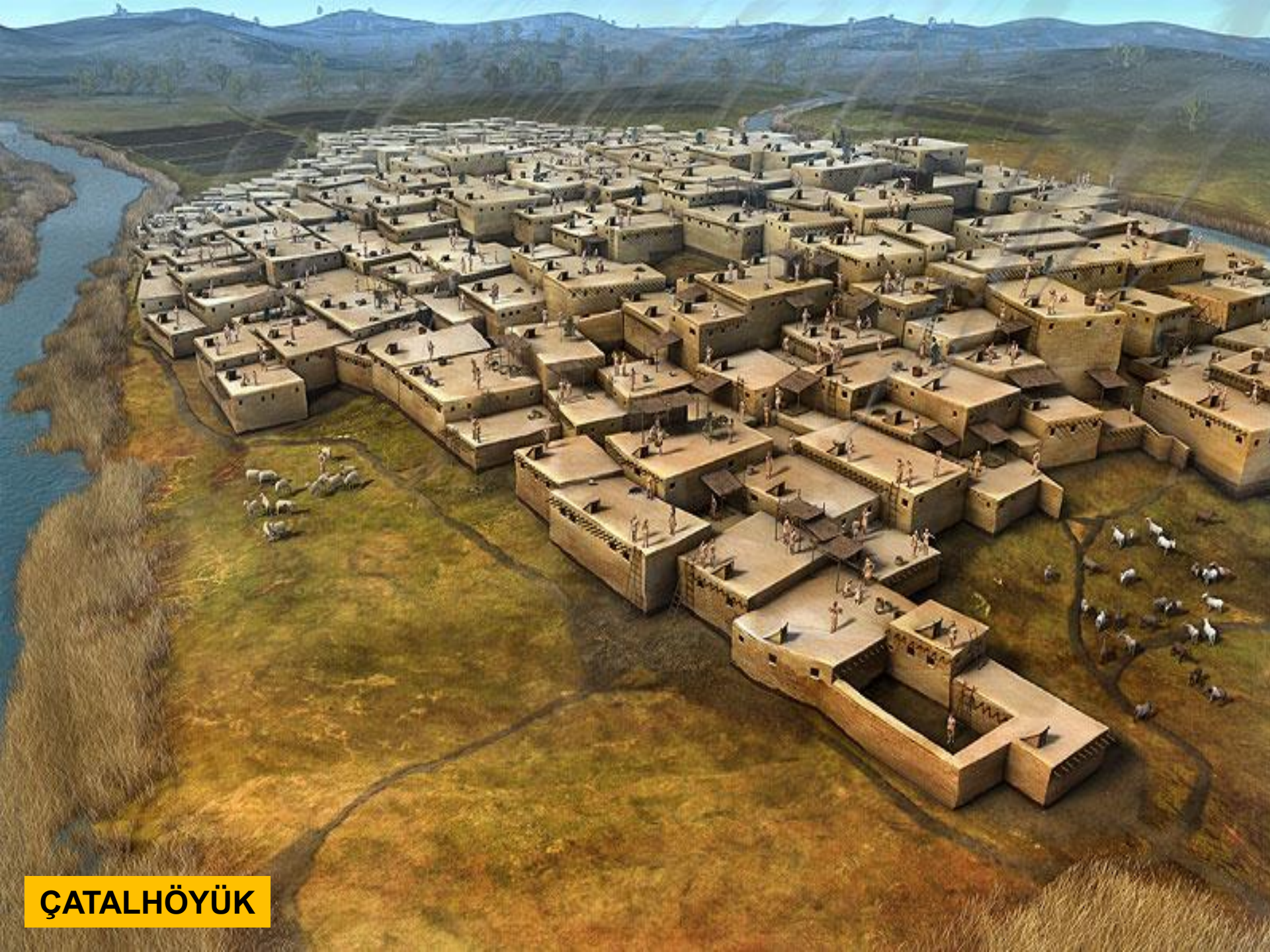


Çatalhöyük - KONYA

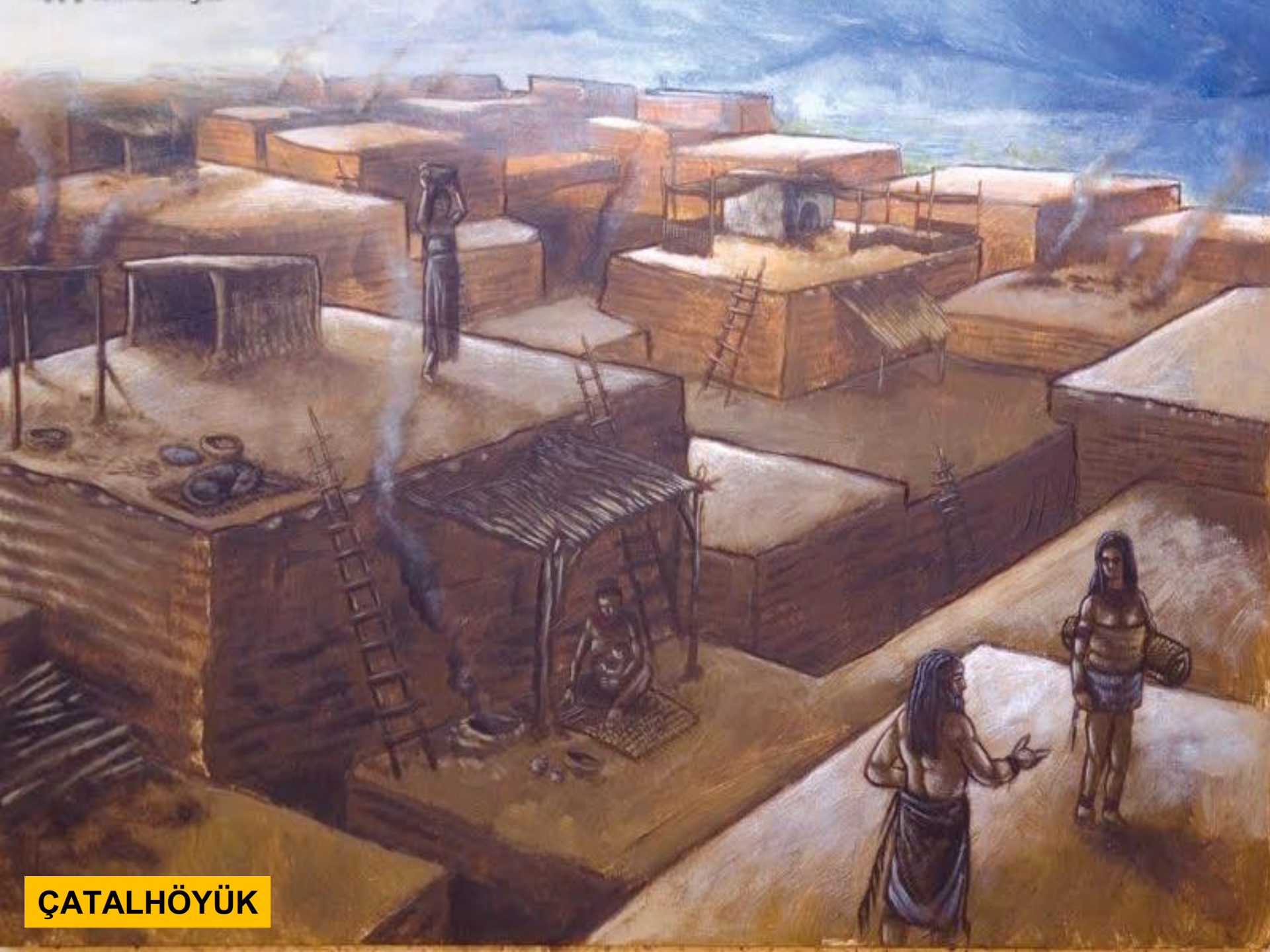
HASAN DAĞI

3268 m

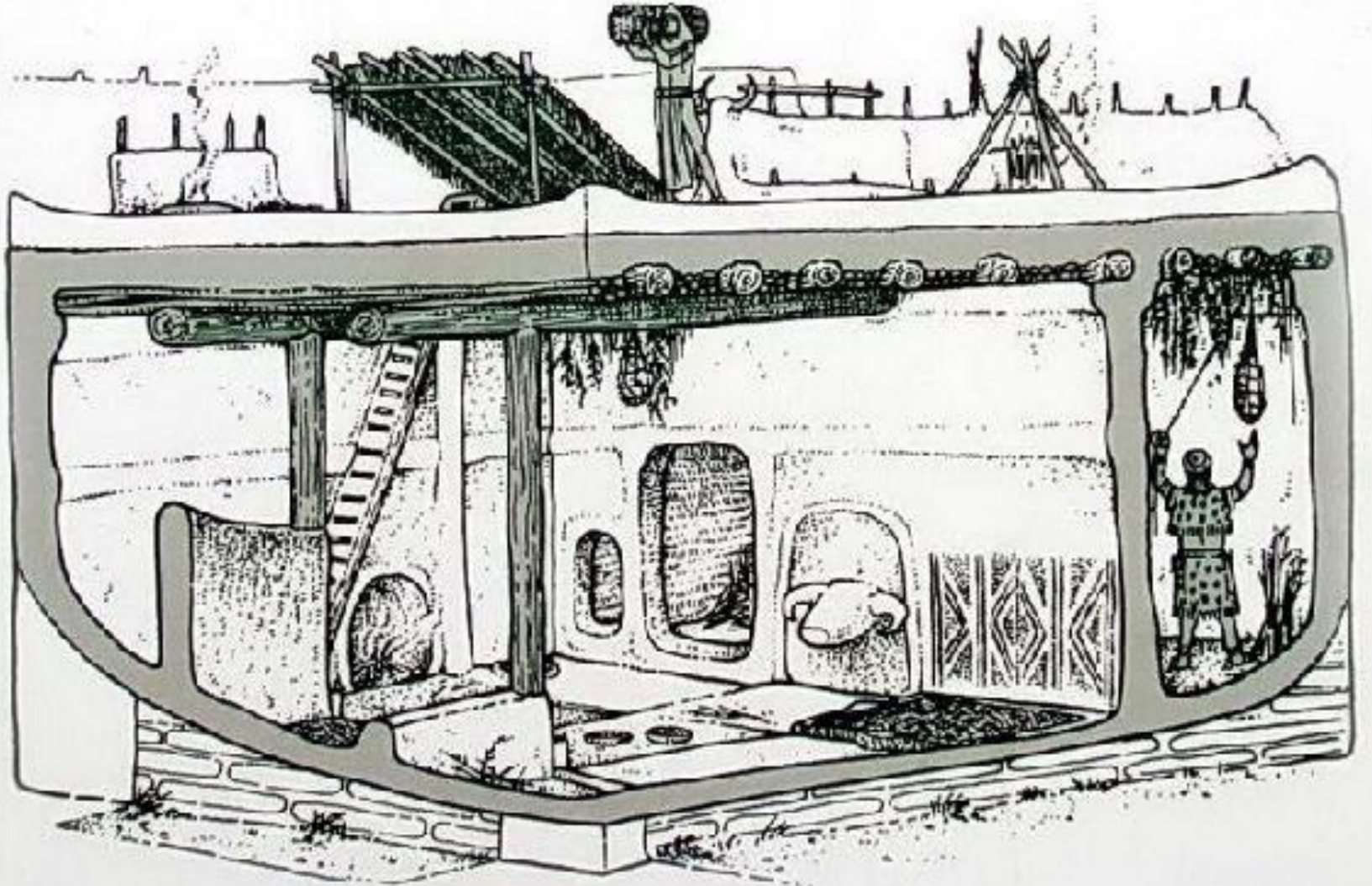




ÇATALHÖYÜK



ÇATALHÖYÜK



Çatalhöyük'te Bir Ev





Anatanrıça Heykelciği
Çatalhöyük-KONYA



Figürinler, Çatalhöyük-KONYA



Seramik eserler - Fikirtepe - İSTANBUL





ÇATALHÖYÜK



Keskin kırılma özelliği kadar görsel çekiciliğiyle de obsidiyen ok ve mızrak uçları için en çok tercih edilen hammaddeydi. Son yıllarda kazılan Tepecik-Çiftlik kazısında çok sayıda, özenle yapılmış obsidiyen mızraklara rastlandı.

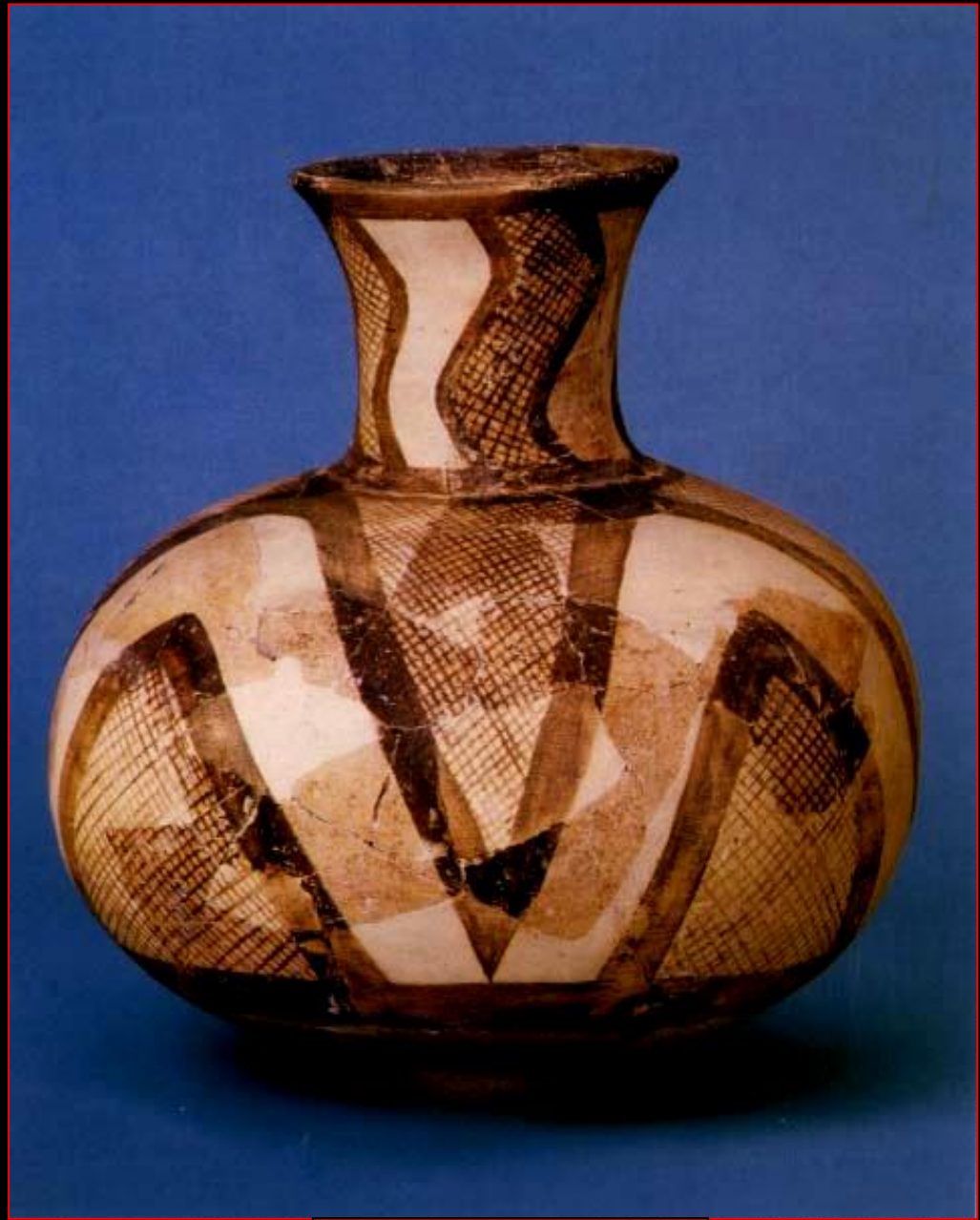
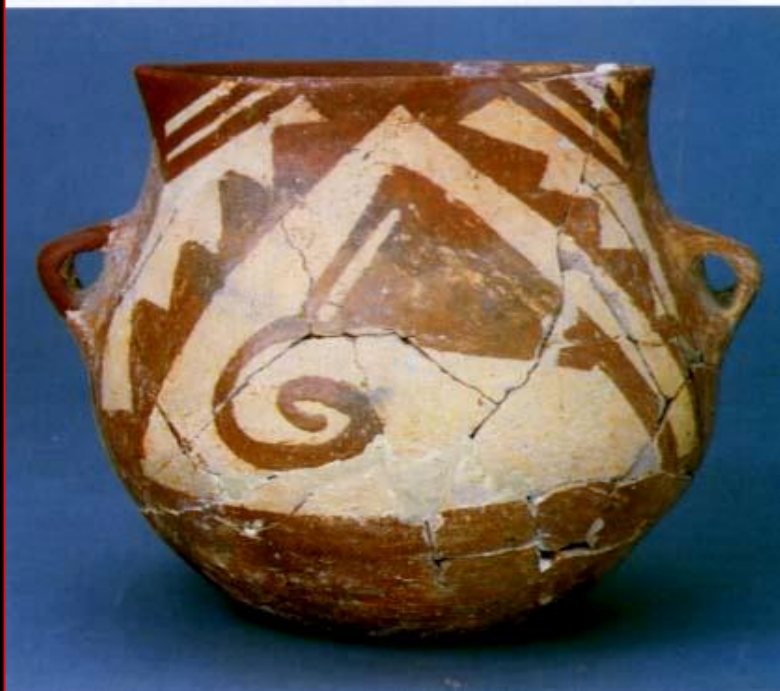


KALKOLİTİK DÖNEM
M.Ö.4500 - 3000



Asa başı, Bakır - Canhasan - KARAMAN





Hacılar-BURDUR



Teleilat höyüğü -
SANLIURFA

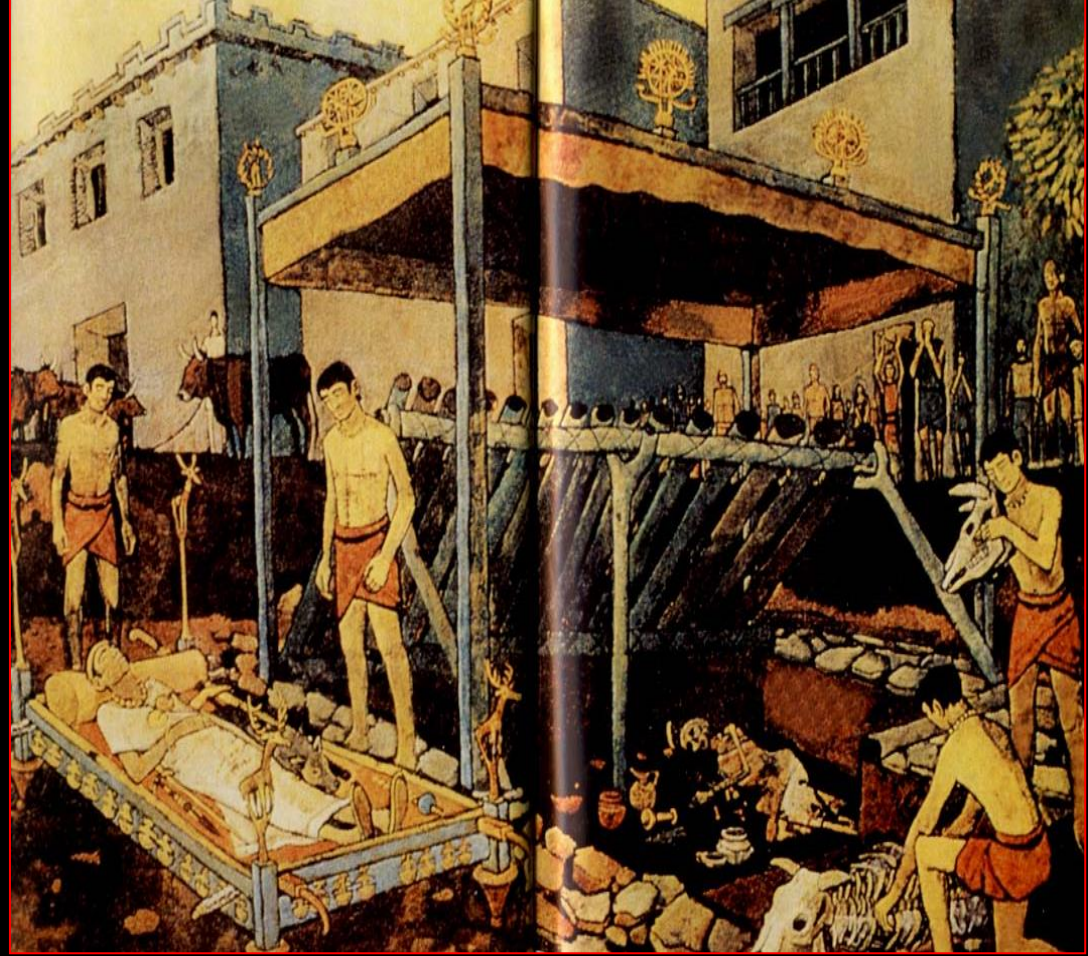
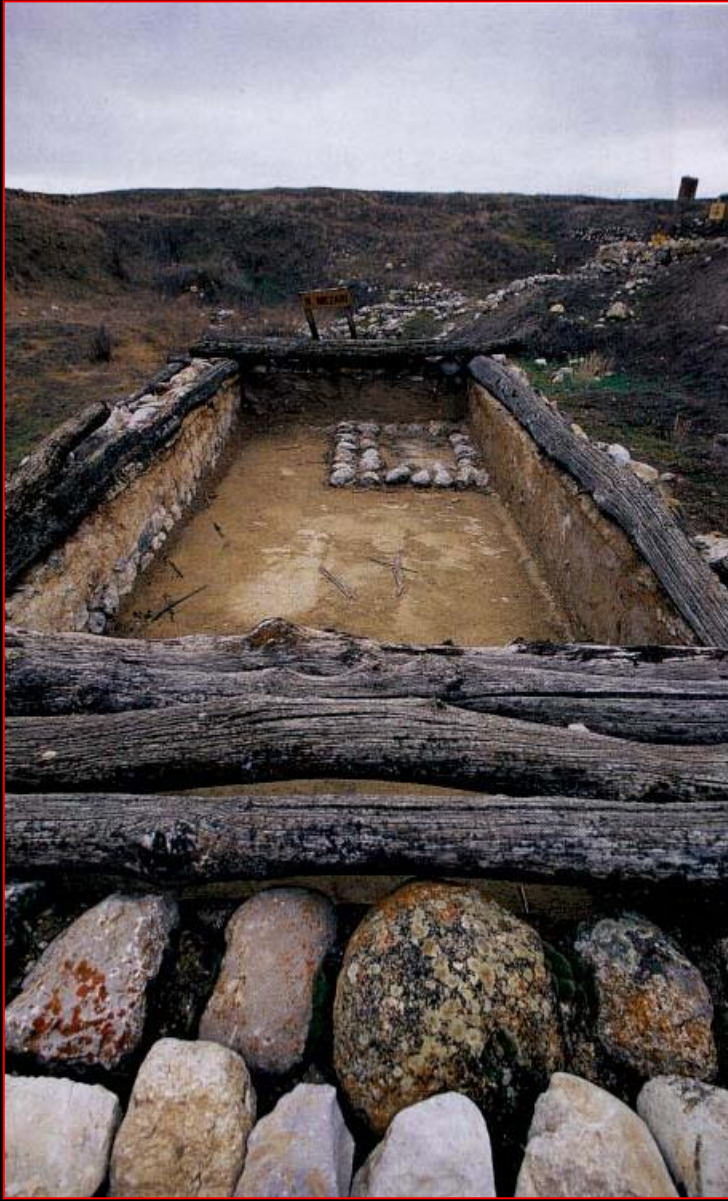


Mezarlar



ANADOLU, M.Ö.3000-2000

ESKİ TUNÇ DÖNEMİ
M.Ö.3000-2000



Alacahöyük - ÇORUM



Alacahöyük Kral Mezarları Örneği



Gümüş kaplı
tunç boğa /
Alacahöyük

ANADOLU MED. MÜZ.



Tunç-altın
çekiç balta /
Alacahöyük

ANADOLU MED. MÜZ.



Güneş kursu /
Alacahöyük



ANADOLU MED. MÜZ.



Tunç çekiç / Alacahöyük

ANADOLU MED. MÜZ.



Altın kabzalı demir hançer / Alacahöyük

F. ÖZENEK



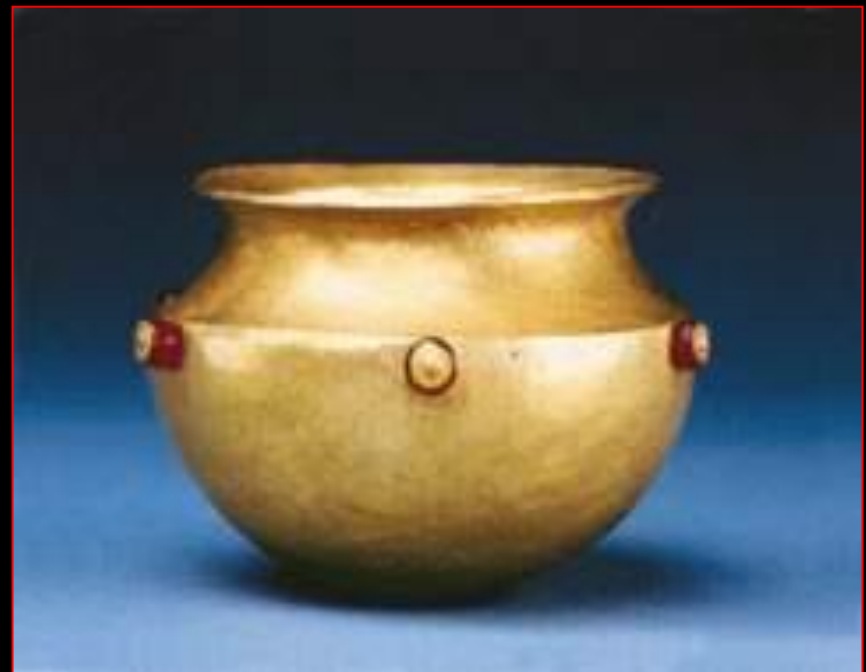
Bronz ve Gümüş Heykelcikler Alacahöyük-ÇORUM



Törensel Semboller , Alacahöyük - ÇORUM









TROYA

ANKYRA

TROIA
M.Ö.3000- M.S 85

Troy

Nine periods in the settlement-hill of Hisarlık

Ilios
Ilium
Ilium
Truva

Troy today

- Early Bronze Age
- Late Bronze Age
- Classical Antiquity



Troy IX
(85 B.C.–A.D. 500)



Cutaway diagram of the nine periods

Troy VIII
(8th c.–85 B.C.)

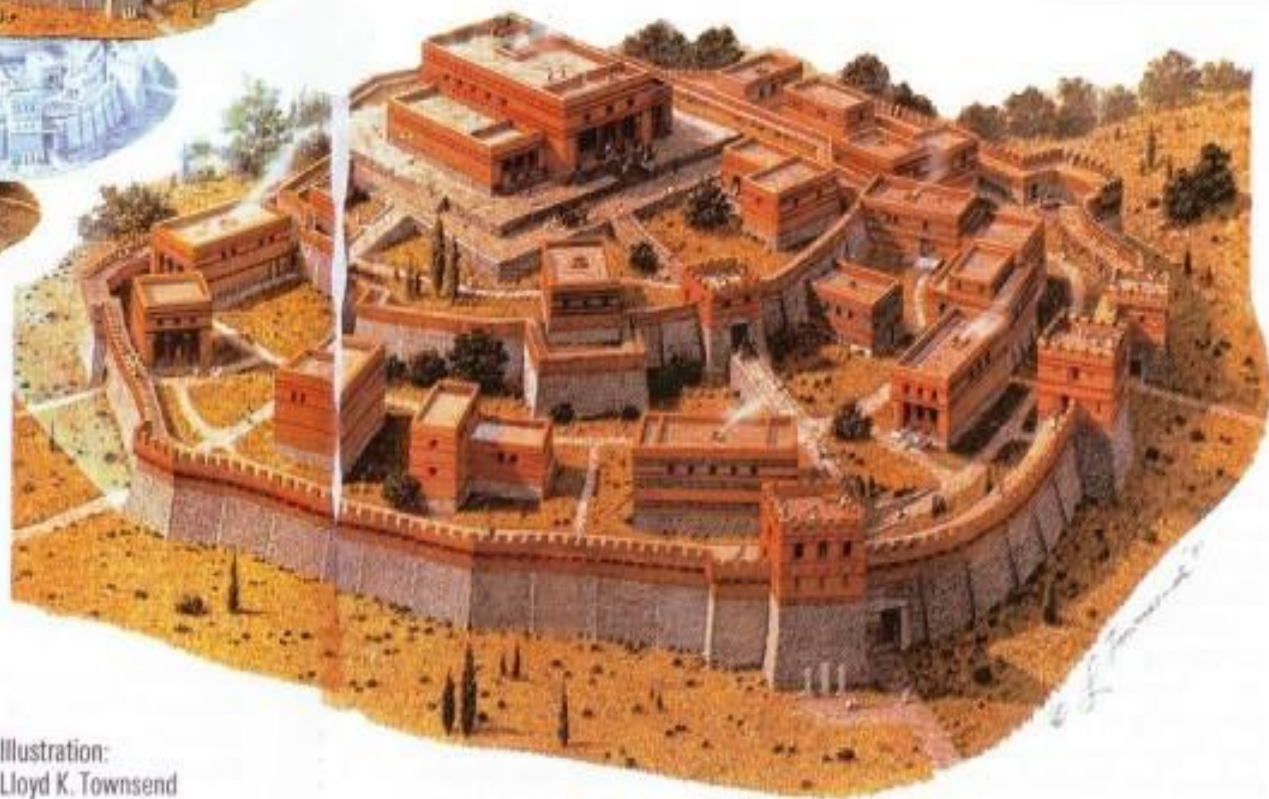


Troy VII
(1250–1000 B.C.)



Homeric Ilios

Troy VI
(1800–1250 B.C.)



Troy V
(1900–1800 B.C.)



Troy IV
(2100–1900 B.C.)



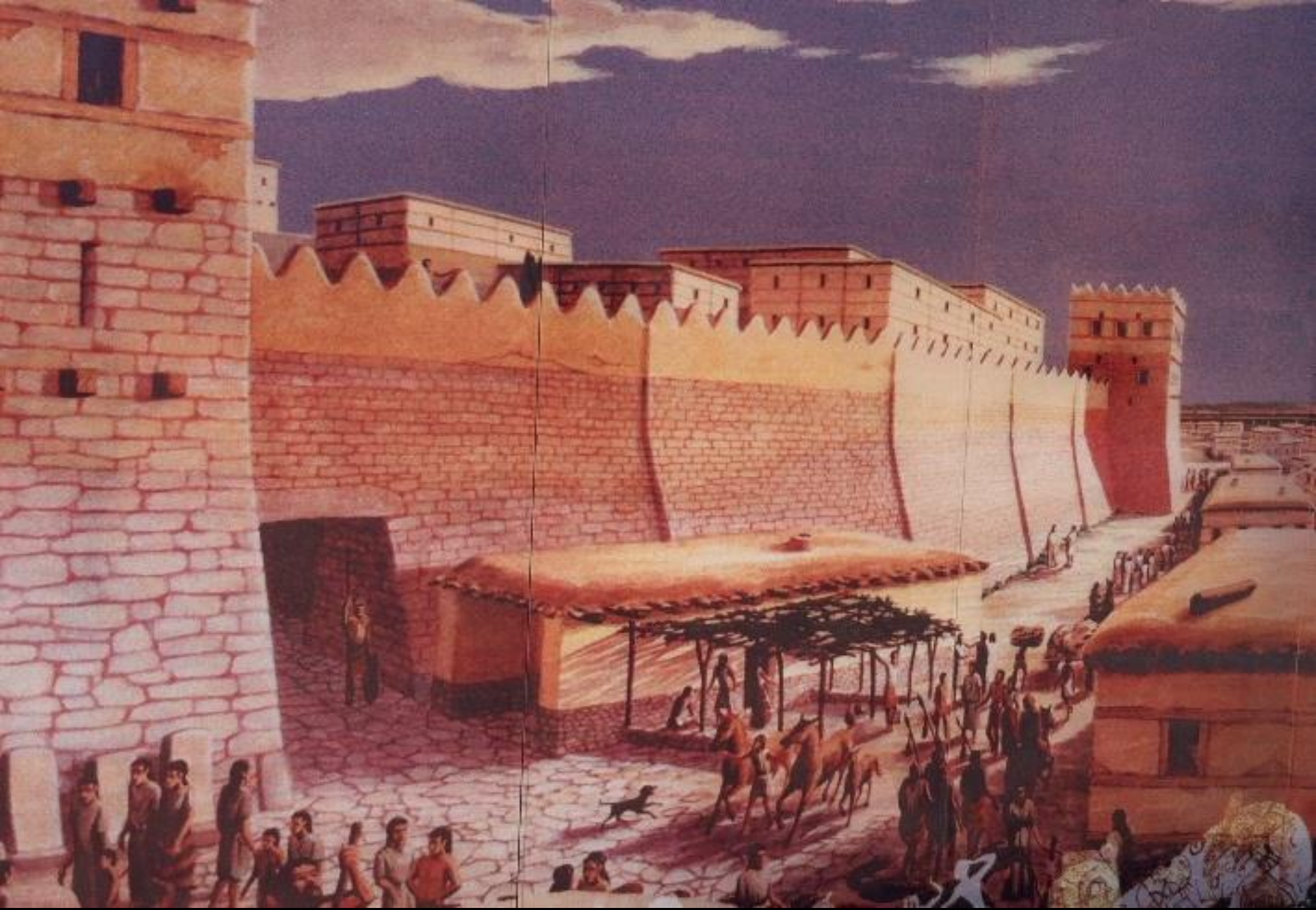
Troy III
(2400–2100 B.C.)



Troy II
(2500–2400 B.C.)

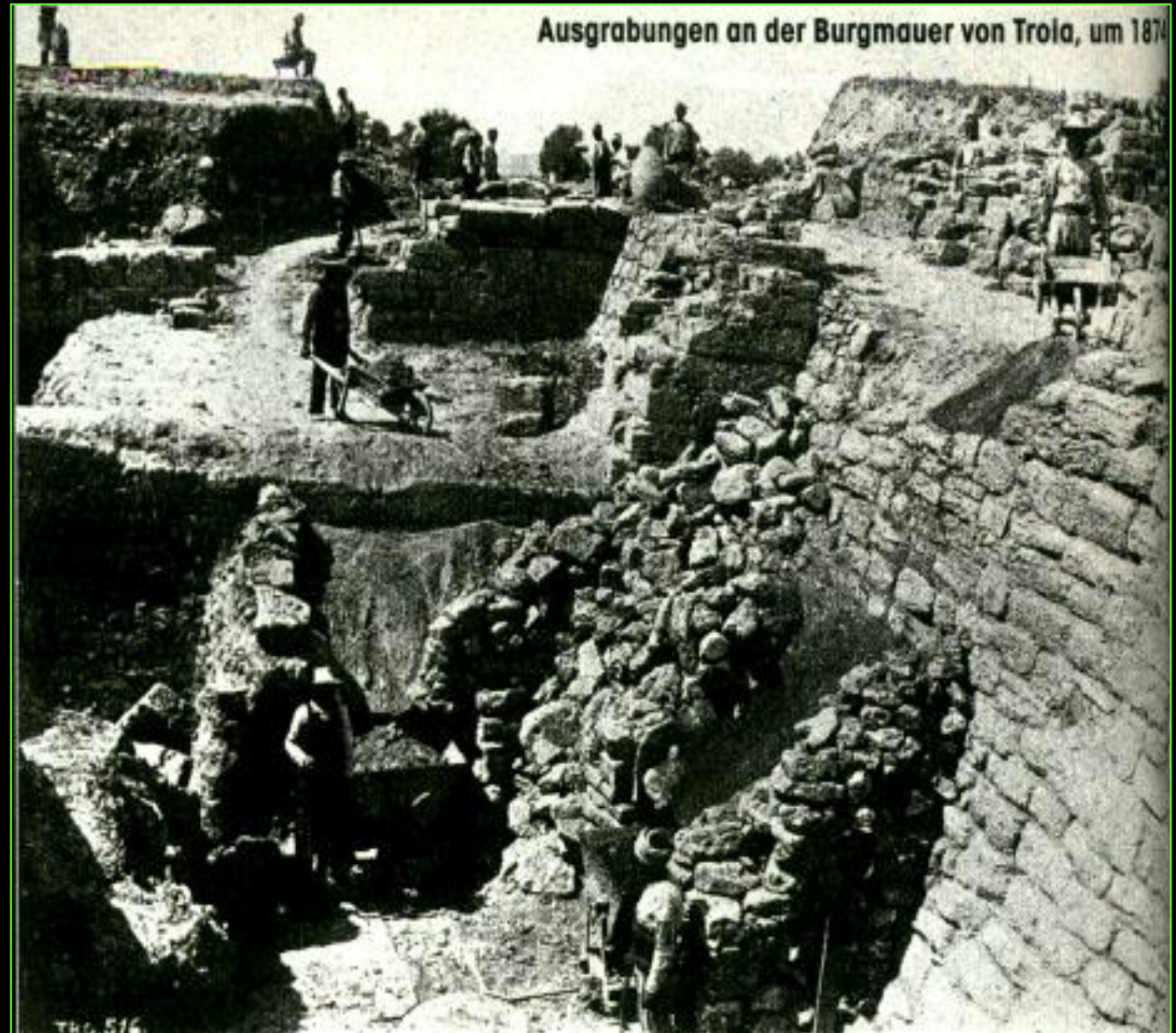


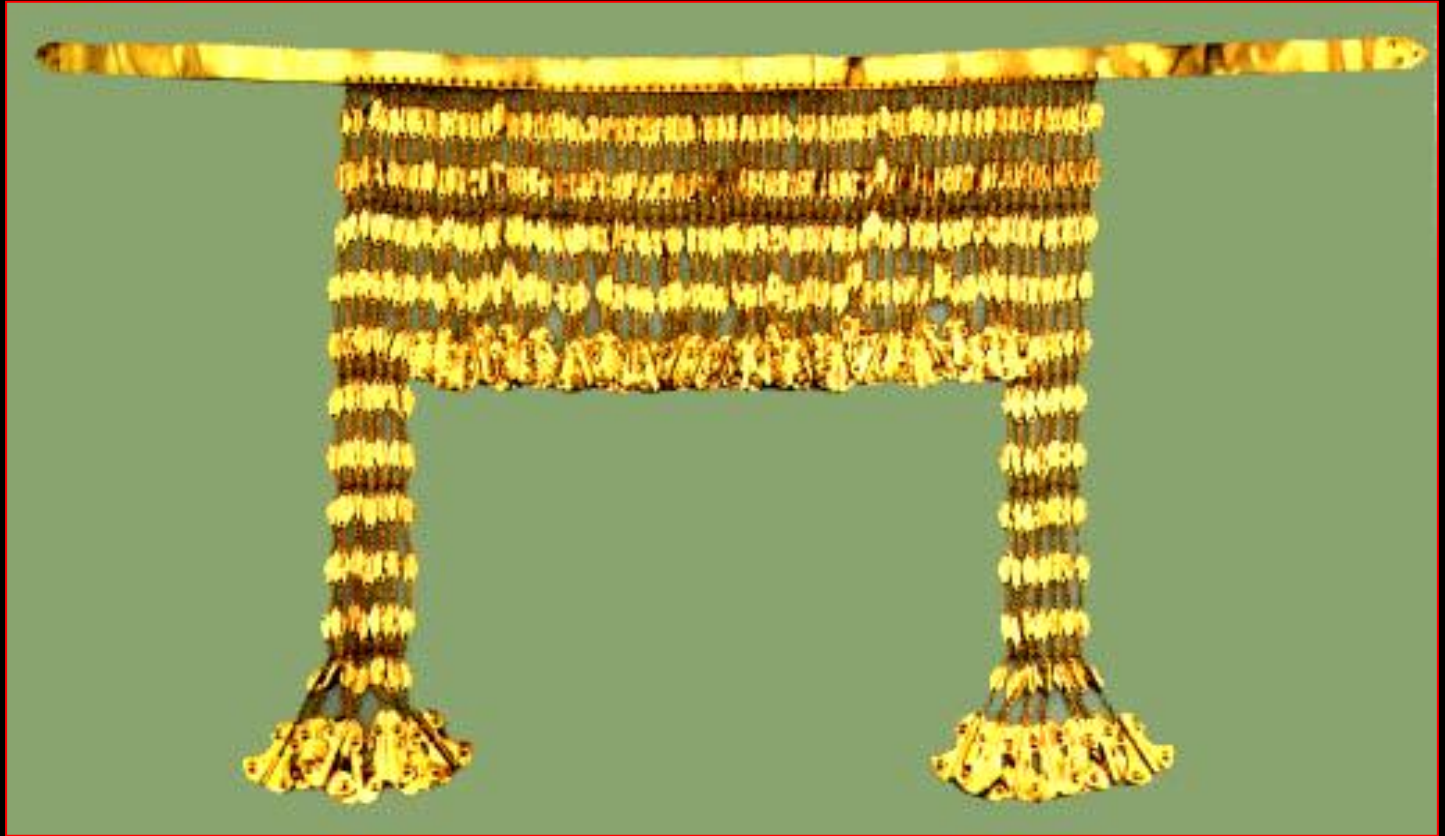
Illustration:
Lloyd K. Townsend



TROYA ŐEHRI

1871 – 1890 Schlieman'in Kazısı







27. QM Tufpa Akm Suv Kala

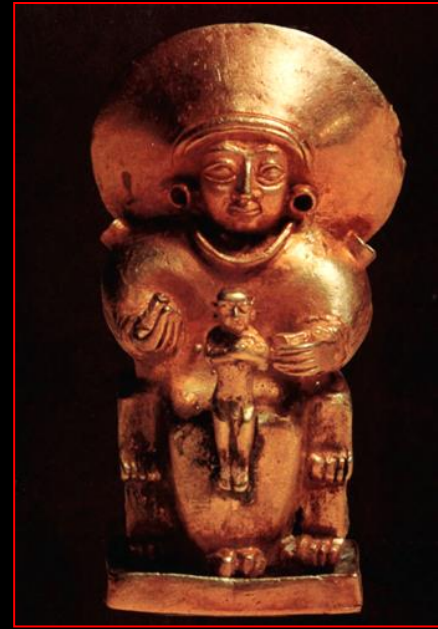
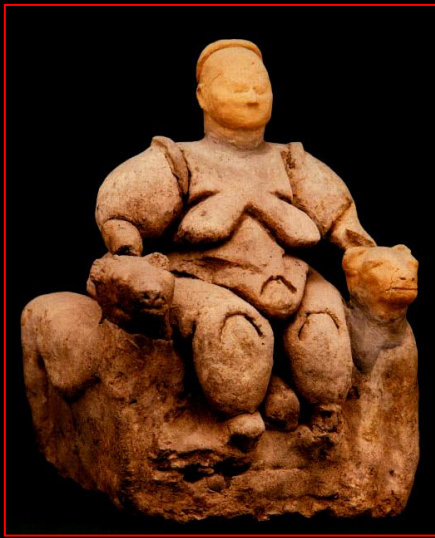


28. QM Sprall Akm Tok





Idoller, Alabaster , Kültepe - KAYSERİ



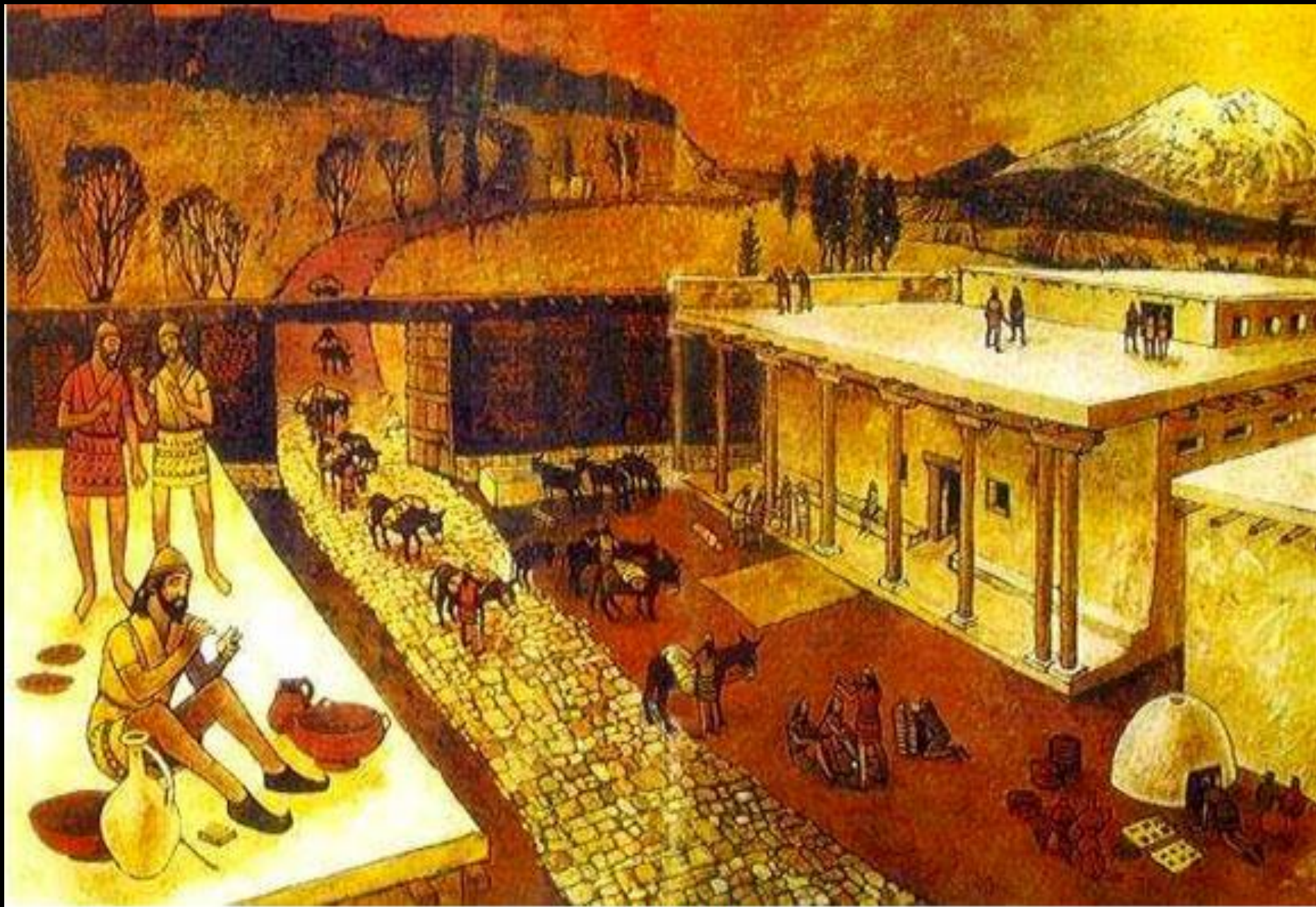


ANADOLU – M.Ö.2.Binyıl



Kültepe / Kaniş,
E.GAL A-ni-ta ru-ba-im =
Kral Anitta'nın Sarayı,

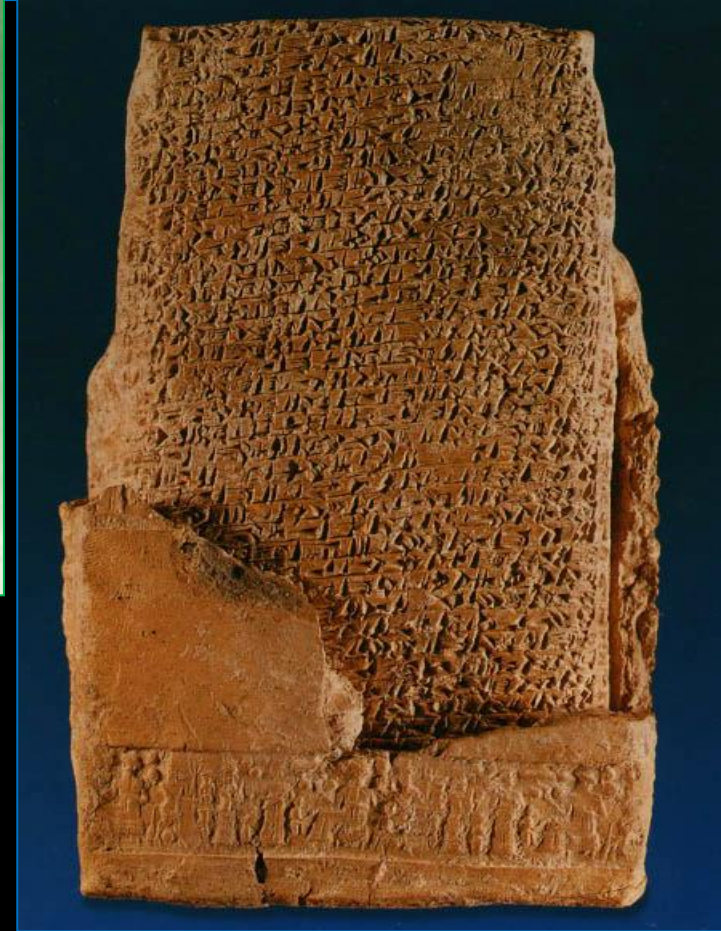
Bronz ,Hançer



Kültepe'de Hayat



Silindir Mühür

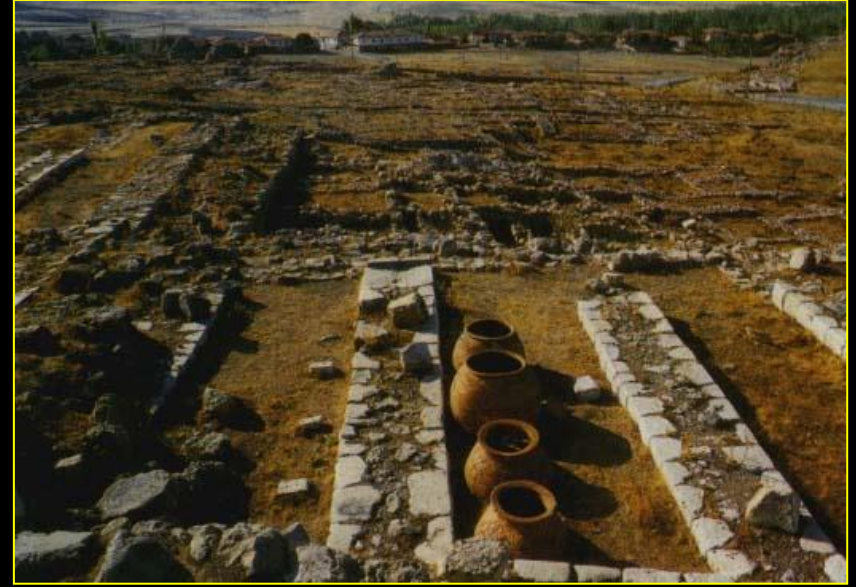


Çivi Yazılı Tablet

ANADOLU – M.Ö. 1750



Boğazköy (URU Ha-at-tu-şa)



HİTİTLER
M.Ö.1750 – 1200



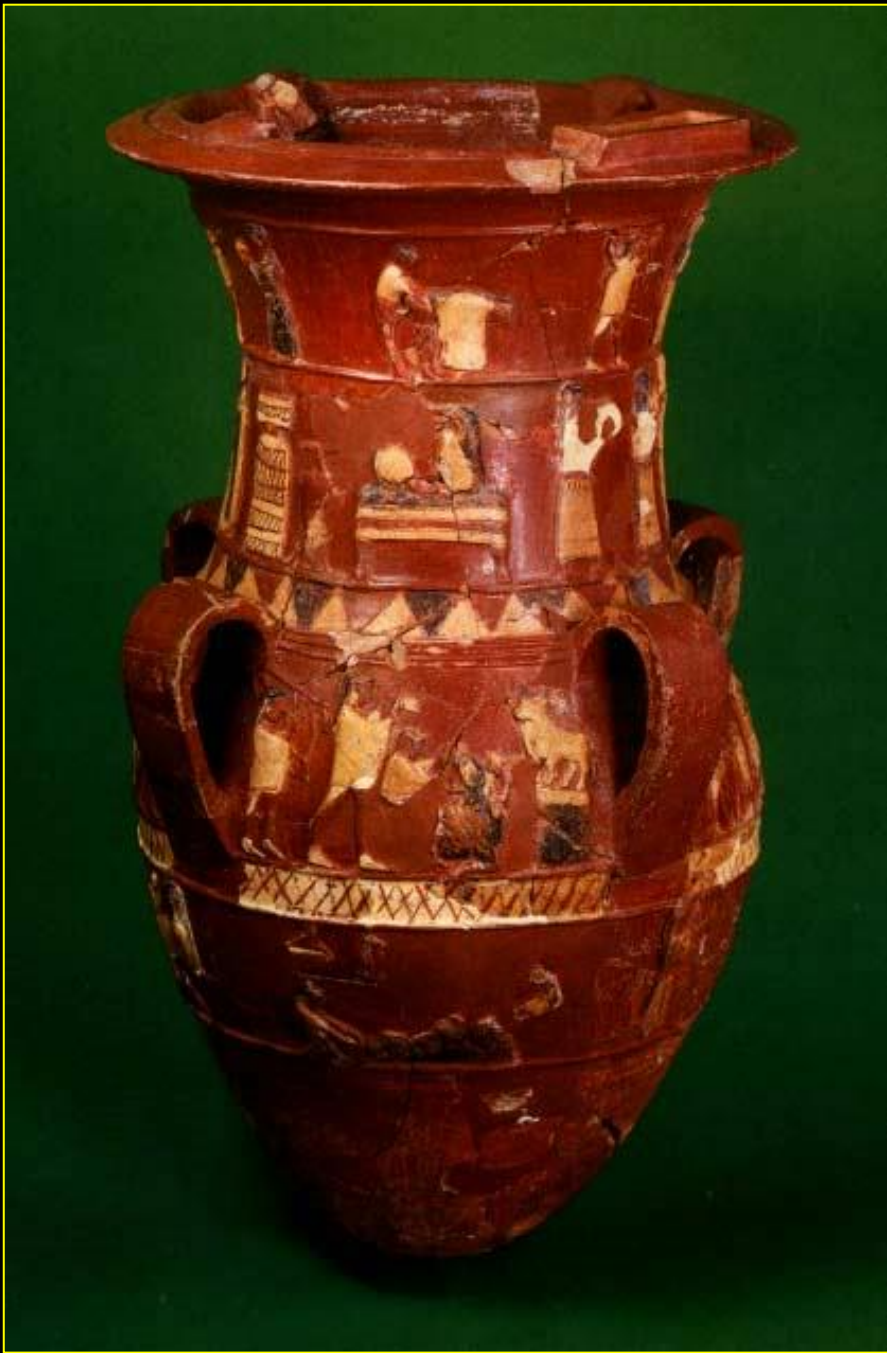






Bir bayram ritüeli
rekonstrüksyonu

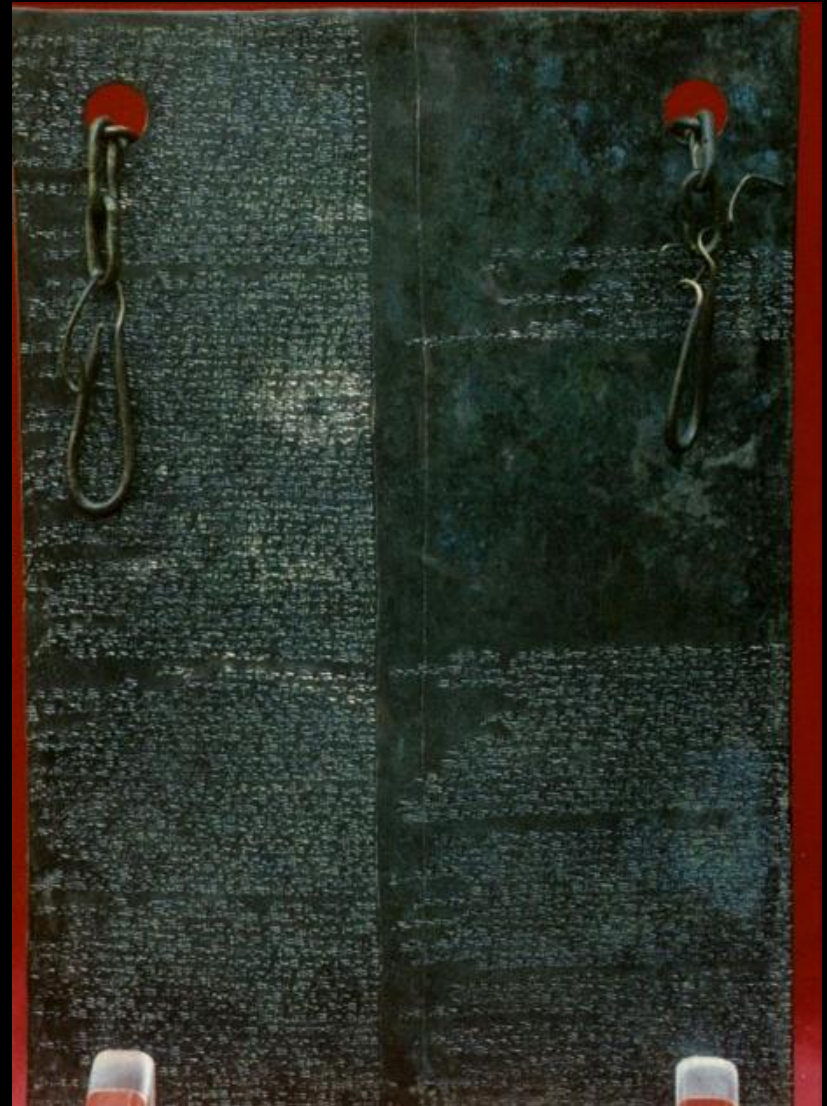




**KADEŞ ANTLAŞMASI, (II.Ramses - III.Hattuşili)
M.Ö.1285 – 1270**

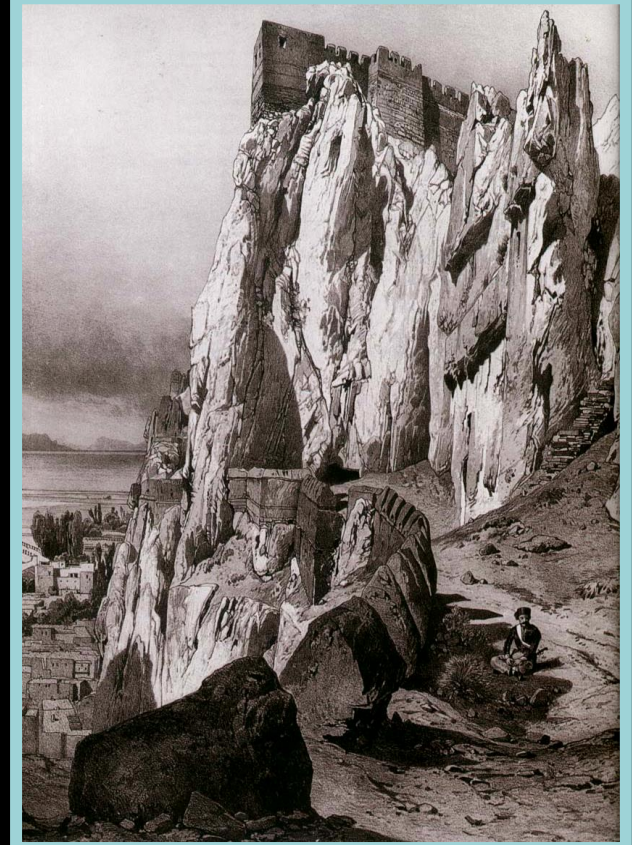
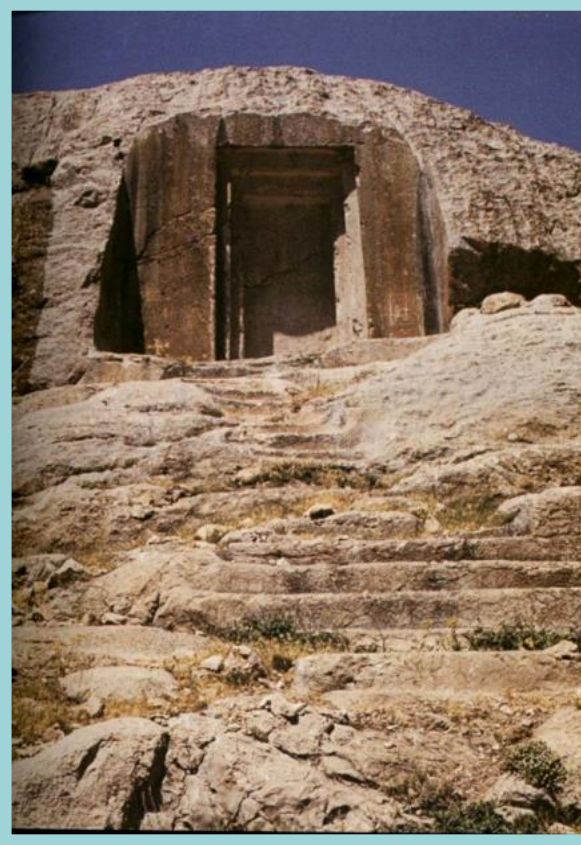
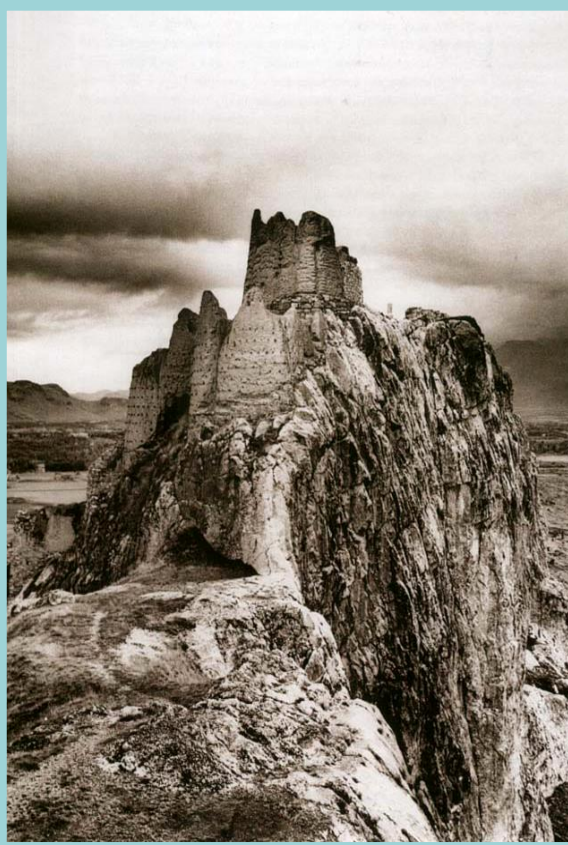


Tablet, Bronz- M.Ö. 1240.





M.Ö.1.Binyıl

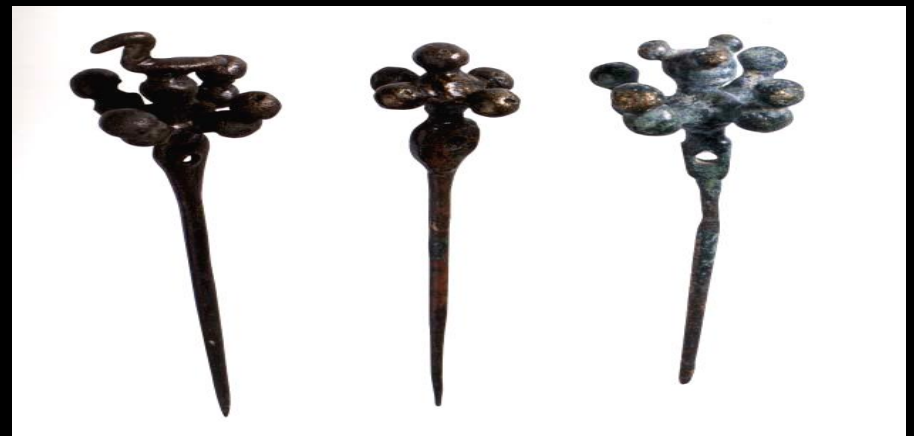


URARTU'LAR
M.Ö.9-8.Yüzyıl



Van Kalesi





FRIG'LER
M.Ö.900 – 695

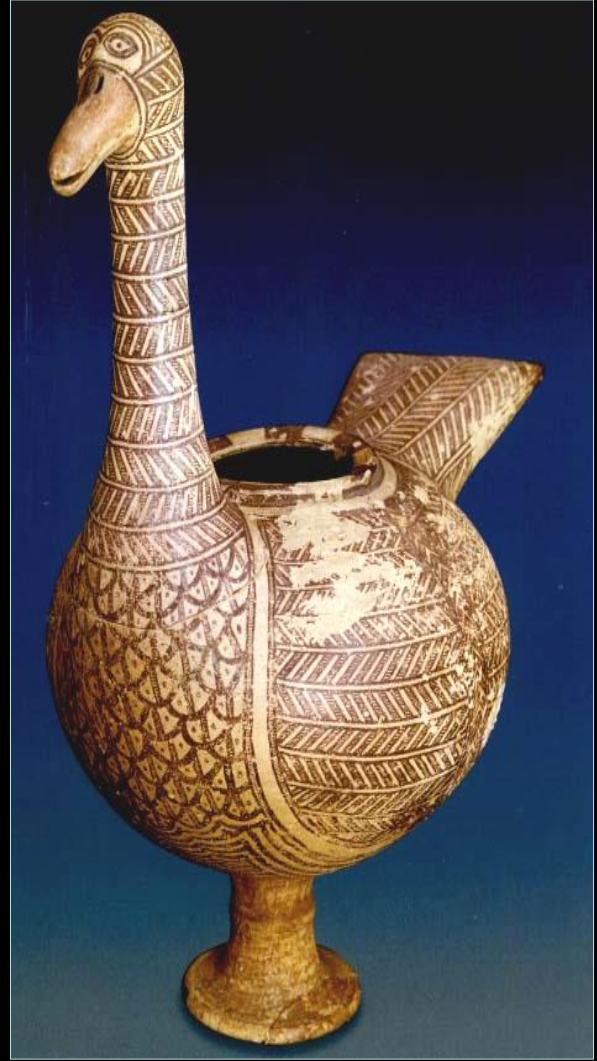
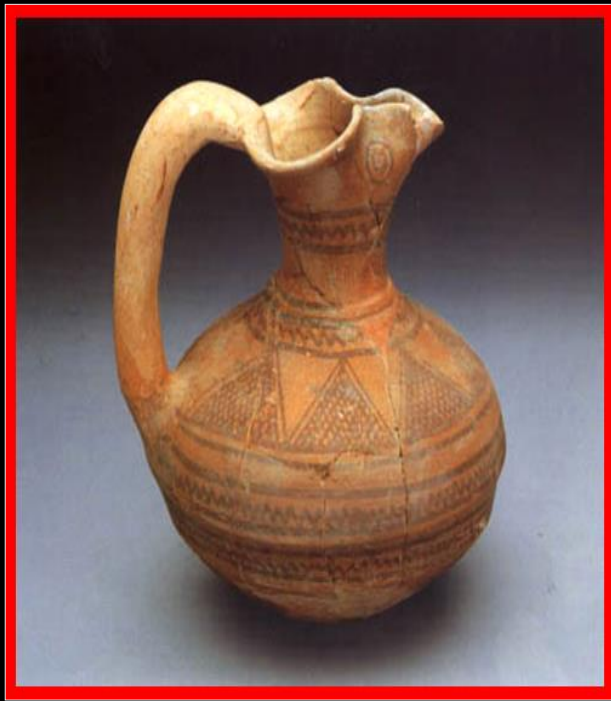
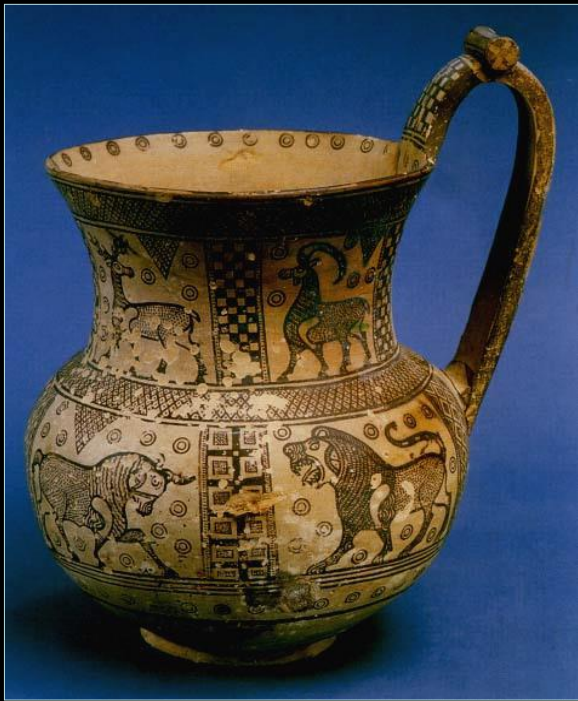




GORDIOS TMLS



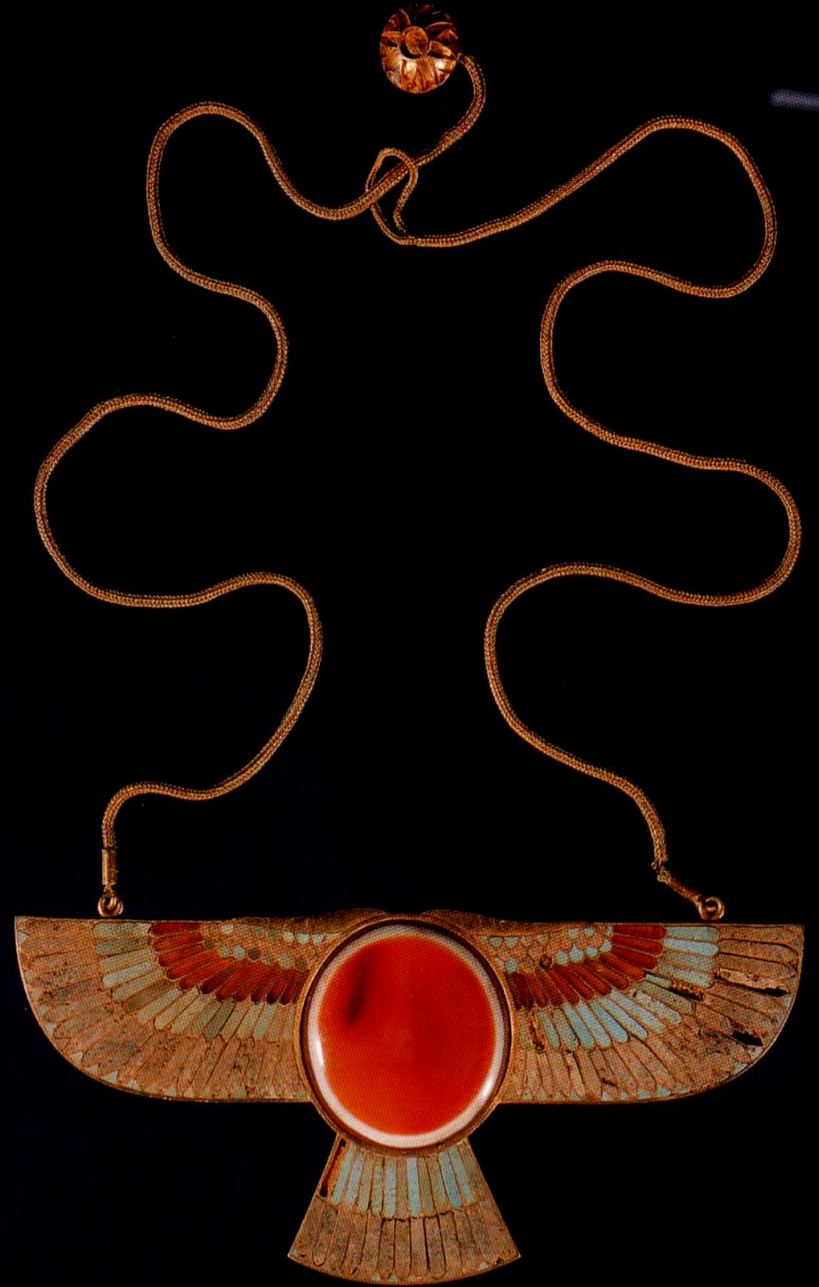
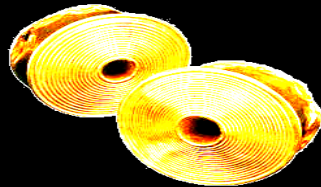
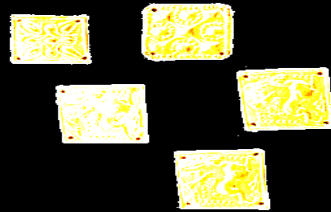
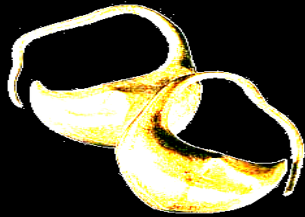
Situla'lar



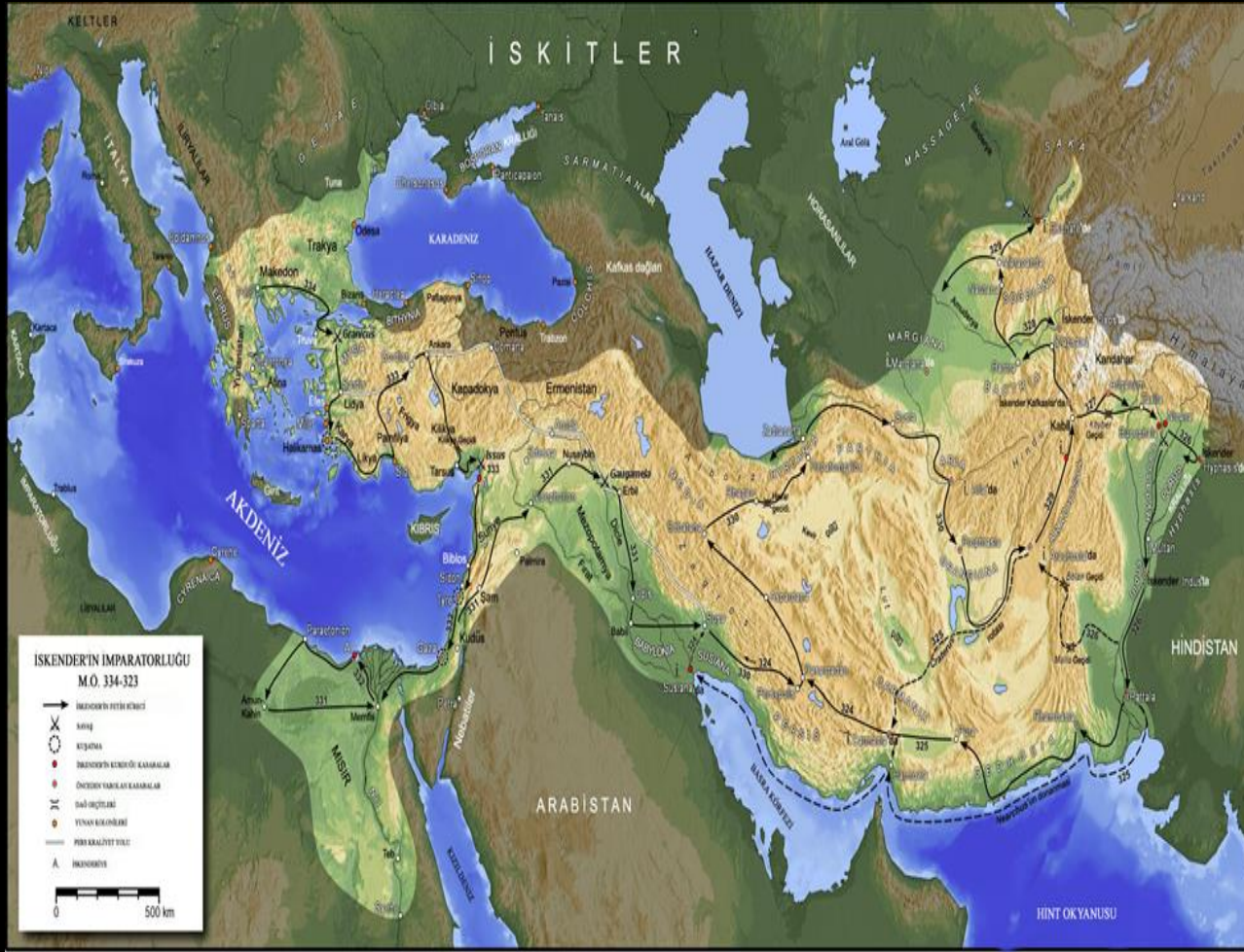


LİDYA'LILAR
M.Ö.700-300







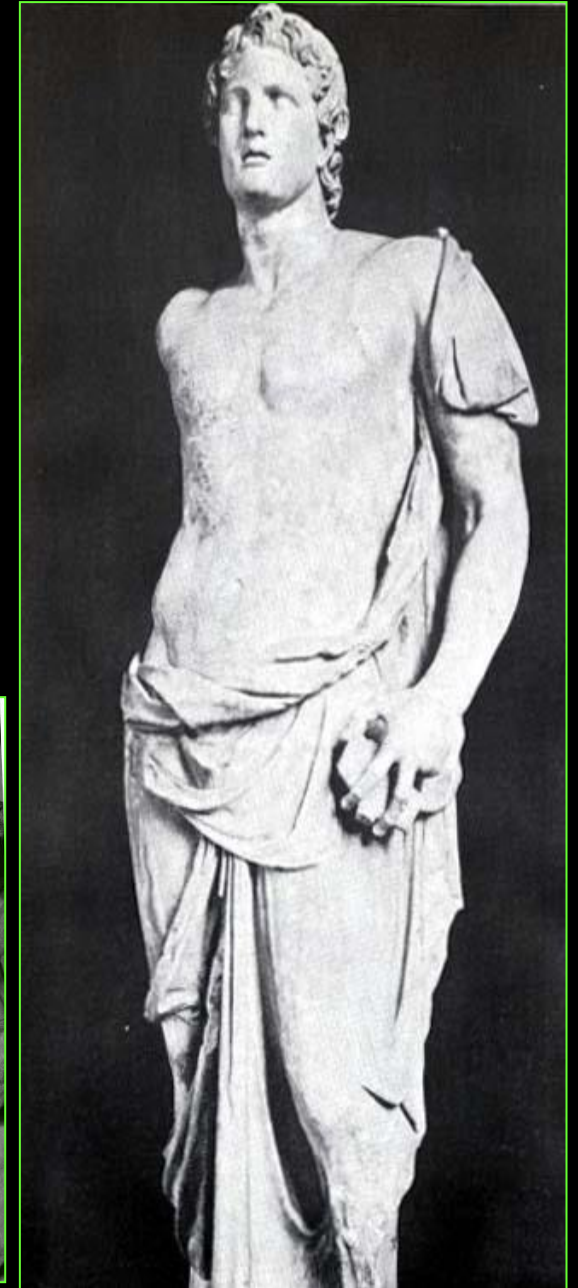
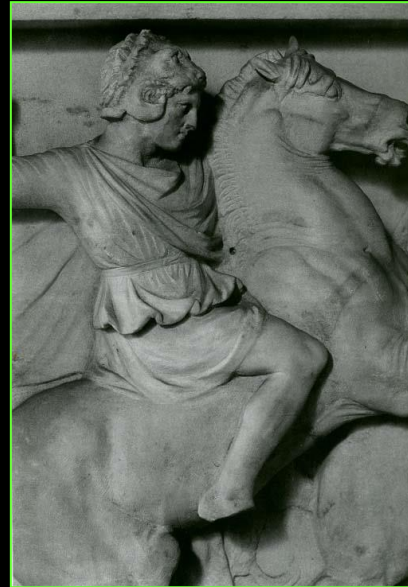


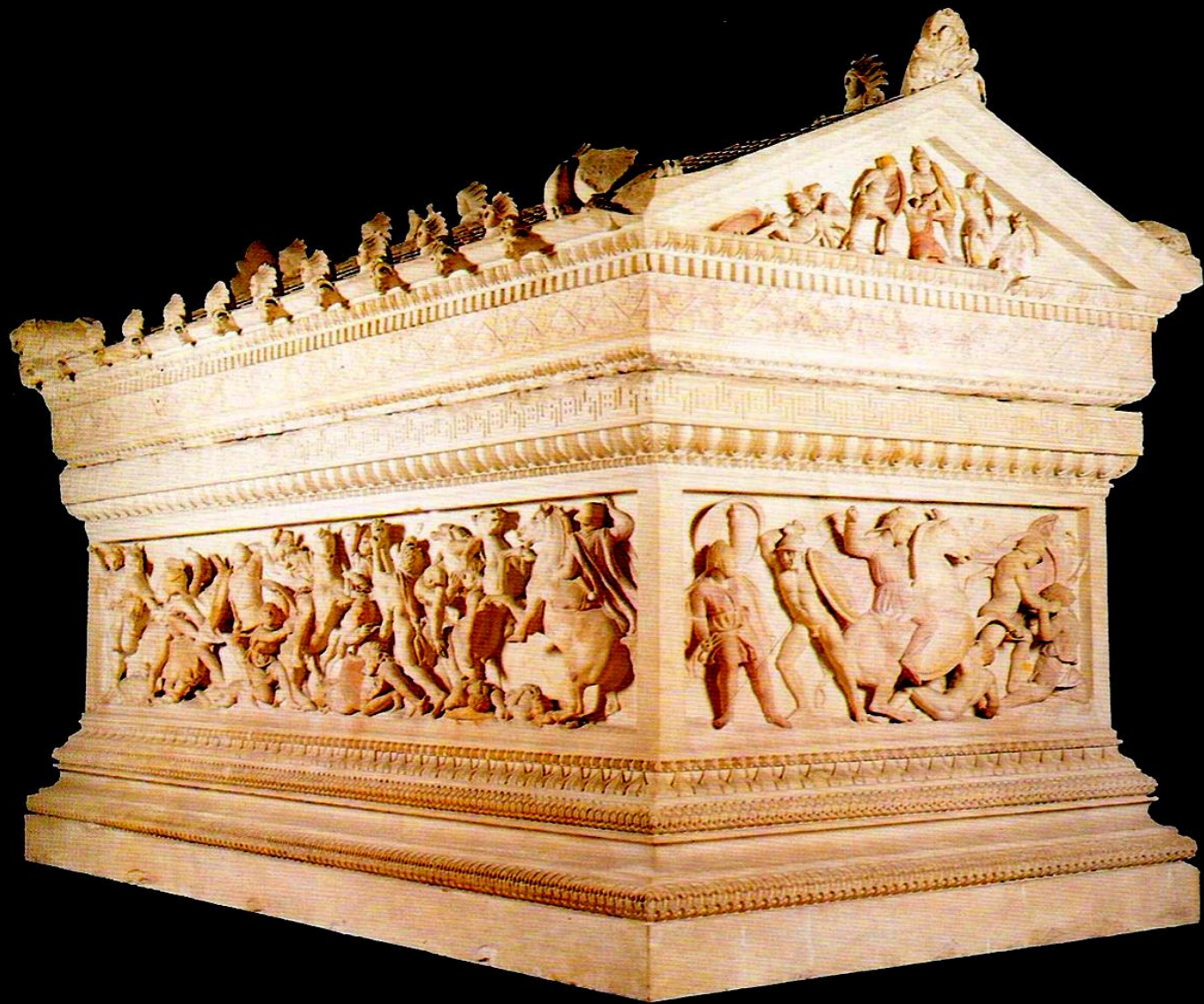
HELLENİSTİK DÖNEM

M.Ö.330-30



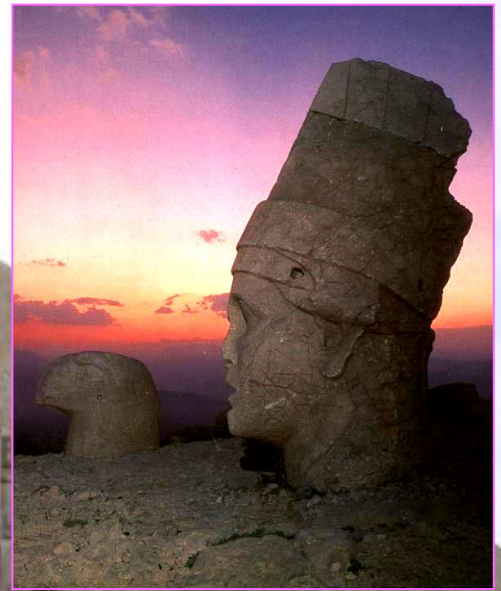
Büyük İskender

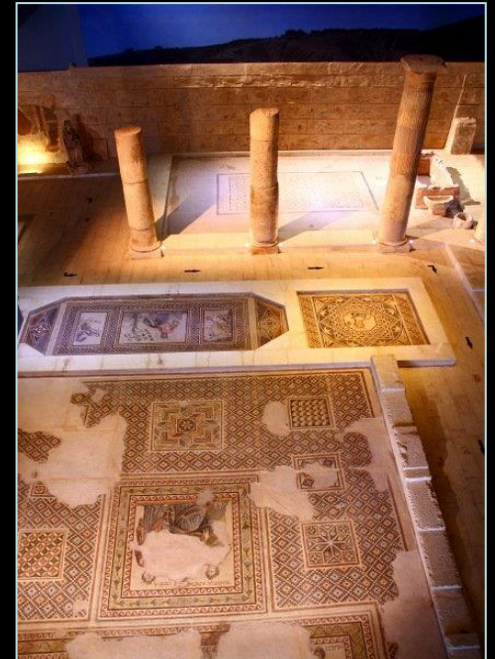






KOMMAGENE UYGARLIĐI M.Ö.100 - M.S.72









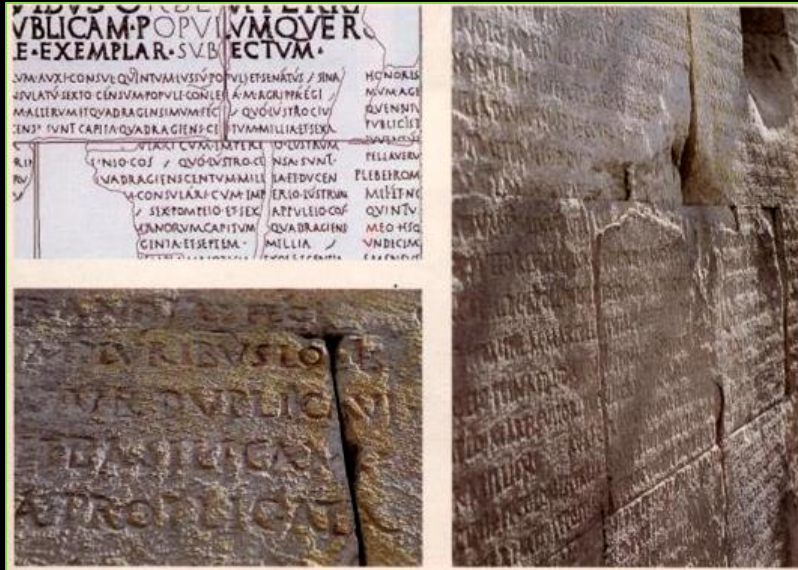


İmp. Augustus



Augustus Tapınağı, ANKARA

ROMA İMPARATORLUĞU
M.Ö.30 -M.S.395





Roma Hamamı Açık hava Müzesi, Ulus - ANKARA

EFES

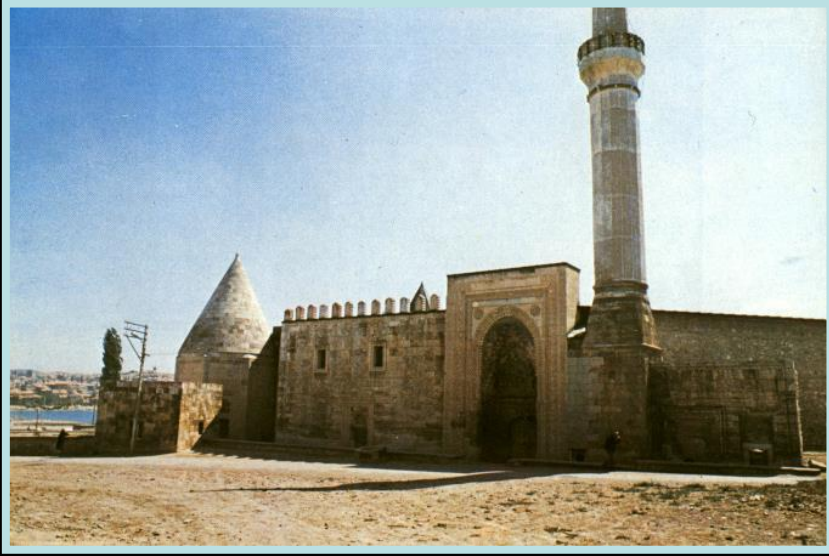


Celcius Kitaplığı

Asya Konsülü Julius Celsius Palemaeanus adına,
ođlu Julius Aquila tarafından yaptırılmıştır. MS 1-2.yüzyıl

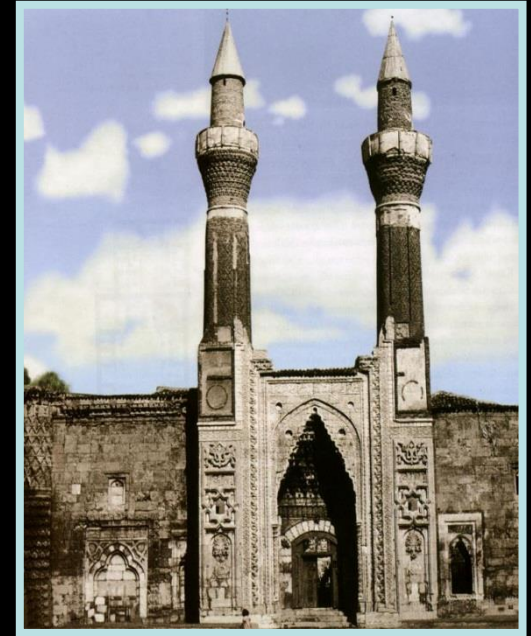






Eşrefoğlu Camii,
BEYŞEHİR -1296.

SELÇUKLU DEVLETİ
1071-1299



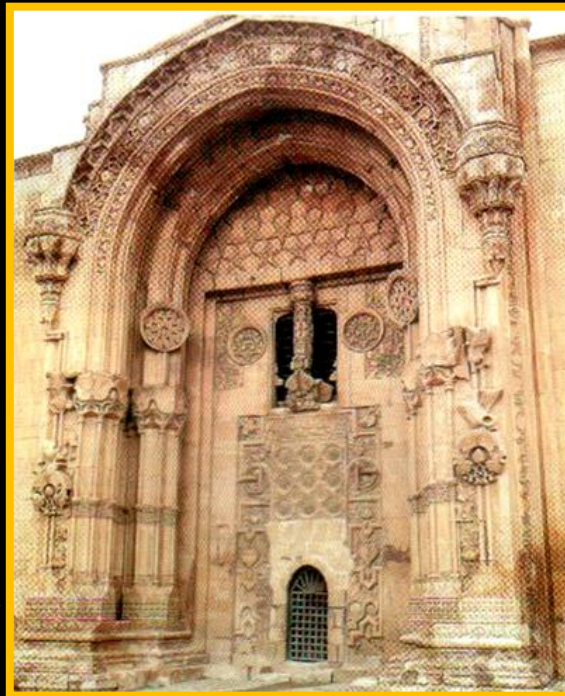
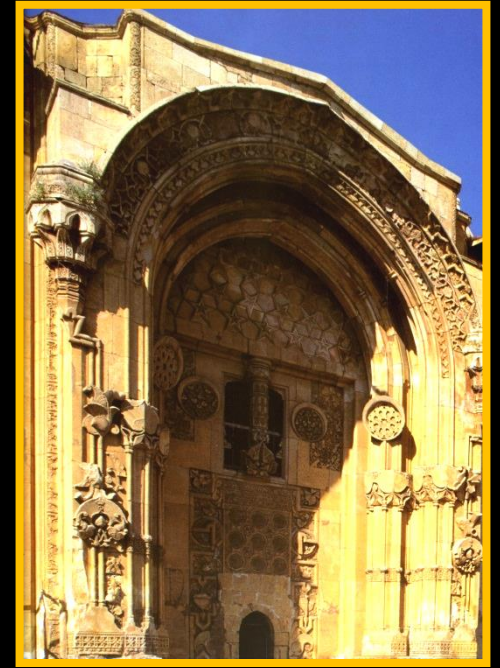
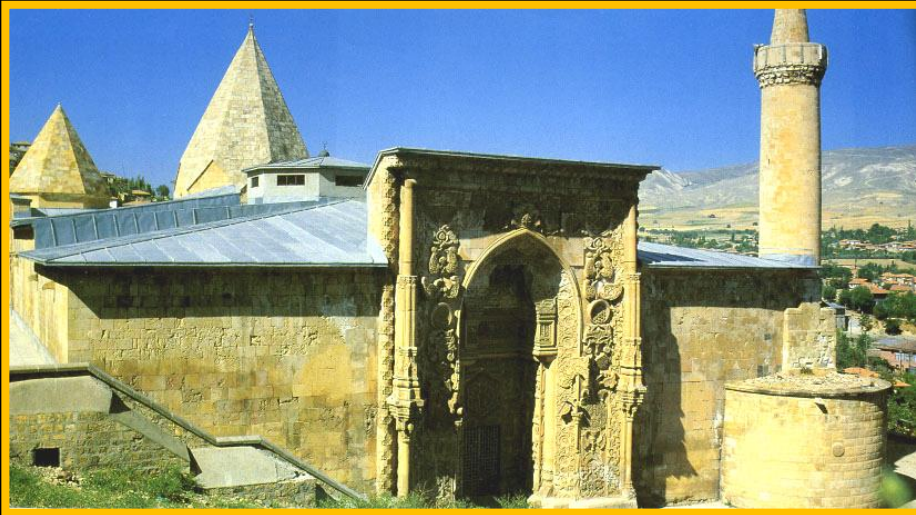
Gök Medrese,
SIVAS-1271.



İnce Minareli Medrese , KONYA -1271



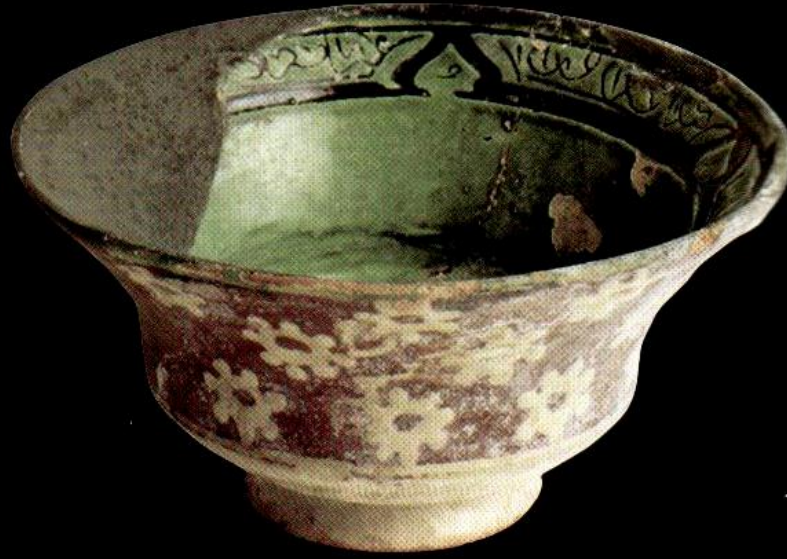
Sultan Han ,AKSARAY -1229



**Divriği Ulu Camii ,
SIVAS-1228.**



Çiniler-13.yüzyıl.



Seramikler- 13.yüzyıl

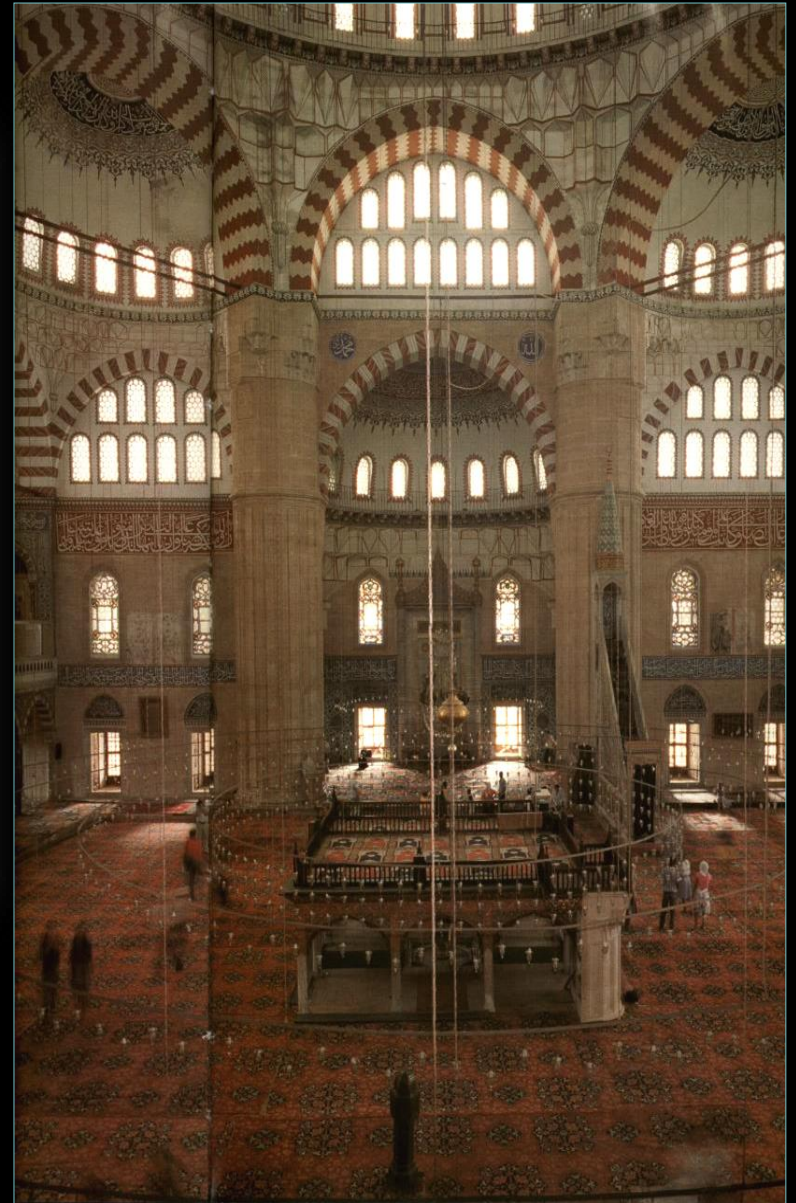
OSMANLI İMPARATORLUĐU, 1299 -1923



Süleymaniye Camii 1550-57.



Selimiye Camii-1575 , EDİRNE

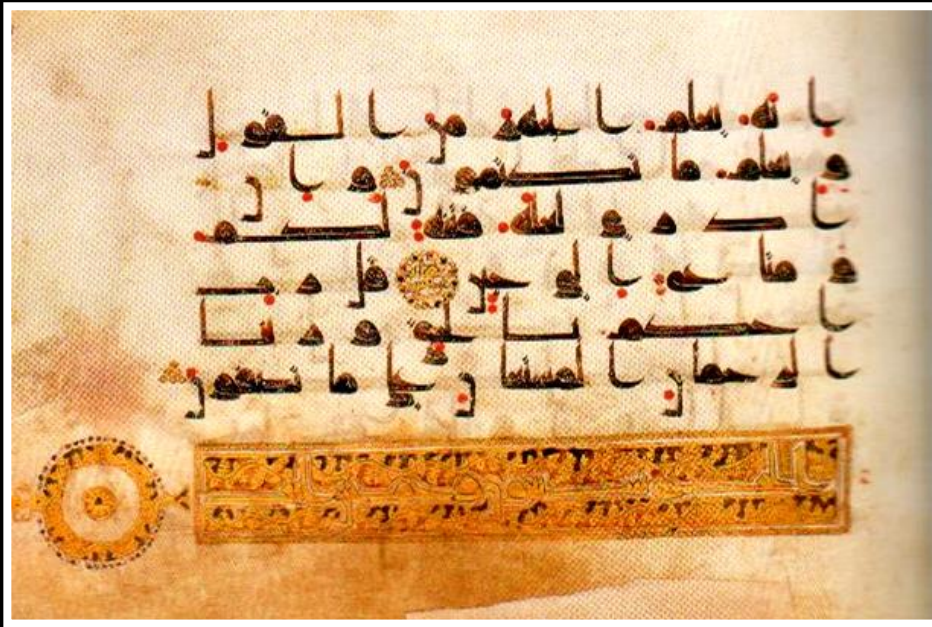


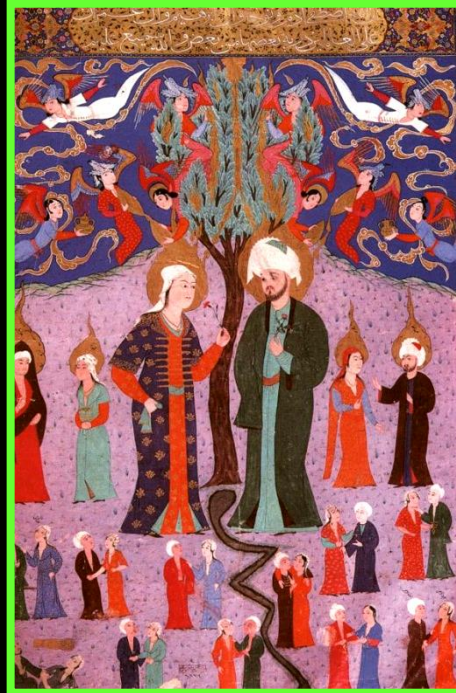




18.Yüzyıl başlarında Ankara'nın genel görüntüsü.
Rijksmuseum - Hollanda.

Kuran-ı Kerim (THE HOLY KORAN)





Kaynaklar

- Akbulut, D. (2009). Günümüzde Geleneksel Oyuncaklar, Millî Folklor, Yıl 21, Sayı 84, sayfa:182-191.
- Avcı, B. (2005). Seramik Oyuncaklar, Dokuz Eylül Üniversitesi Sosyal Bilimler Enstitüsü, Yayınlanmamış Yüksek Lisans Tezi: İzmir
- Baysal, L. E.; Miller, H. (2016). Teoride Süs Eşyaları: Arkeolojik Kontekstlerde Prehistorik Boncukların Yorumu. Anadolu Prehistorya Araştırmaları Dergisi, Mayıs, 11- 28.
- Baysal, L. E. (2015). Neolitik Dönem Kişisel Süs Eşyaları: Yeni Yaklaşımlar ve Türkiye'deki Son Araştırmalar, TÜBA-AR (18): 9-23.
- Gökçek, G.; İnce, G. (2016). Asur Ticaret Kolonileri Çağında Anadolu'da İnanç Sistemi, Fırat Üniversitesi Orta Doğu Araştırmaları Dergisi Cilt: XII, Sayı:1-2, sayfa: 43-56.
- Sipahi, T. (2014). Son Yıllardaki Çalışmaların ve Buluntuların Işığında Eski Hitit Kabartmalı Vazoları Üzerine Değerlendirmeler, Anatolia, 40, ss: 21-43.