

The background features a series of concentric, overlapping circles in light gray, some solid and some dashed, creating a sense of depth and movement. In the center, there is a large orange speech bubble with a white outline and a small tail pointing downwards. The text is centered within this bubble.

**What is an exhibition?
WITH SAMPLES
by Ceren Karadeniz**

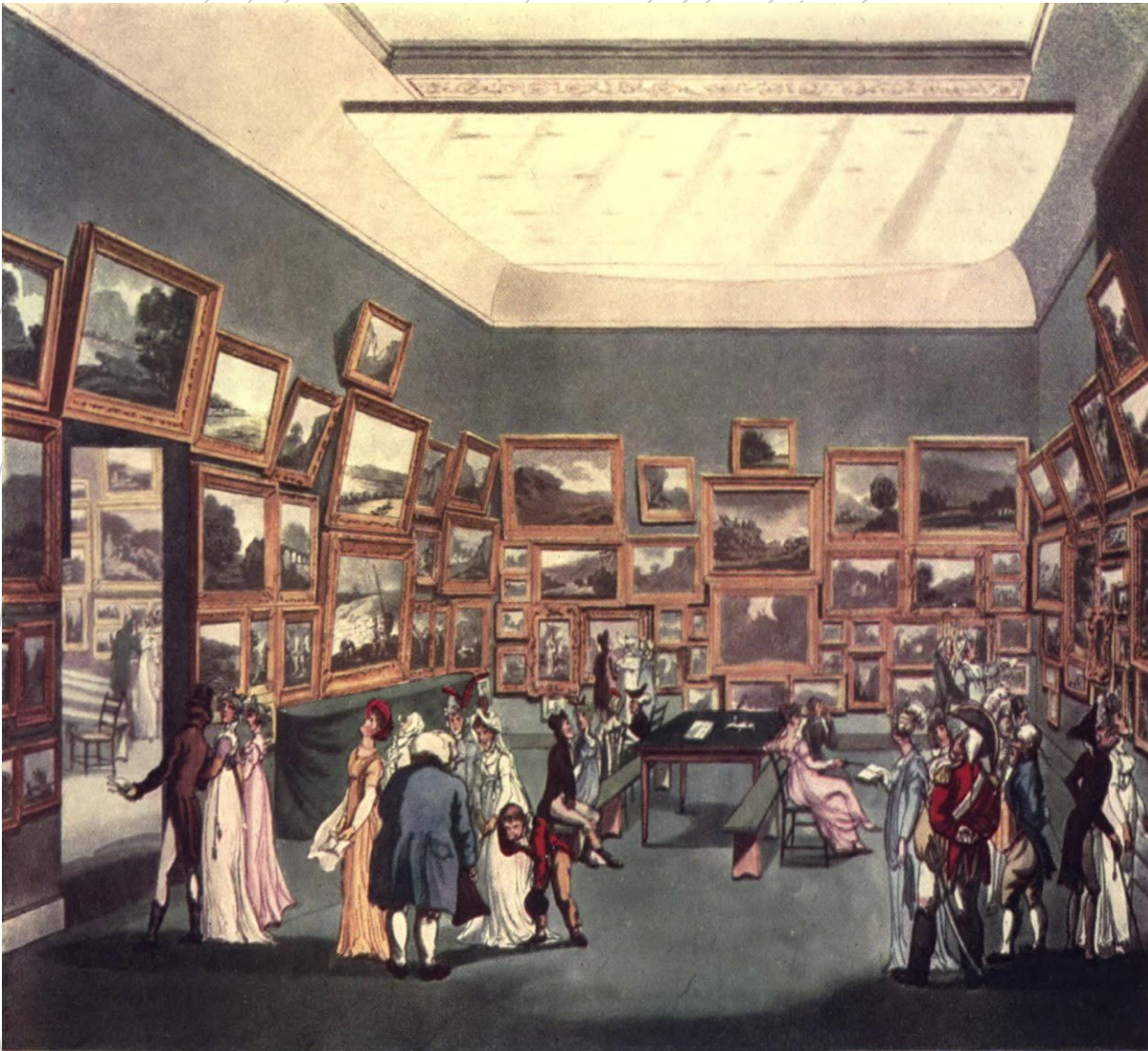
An exhibition is a text

An exhibition is an essay on a wall

An exhibition is an intervention in a space

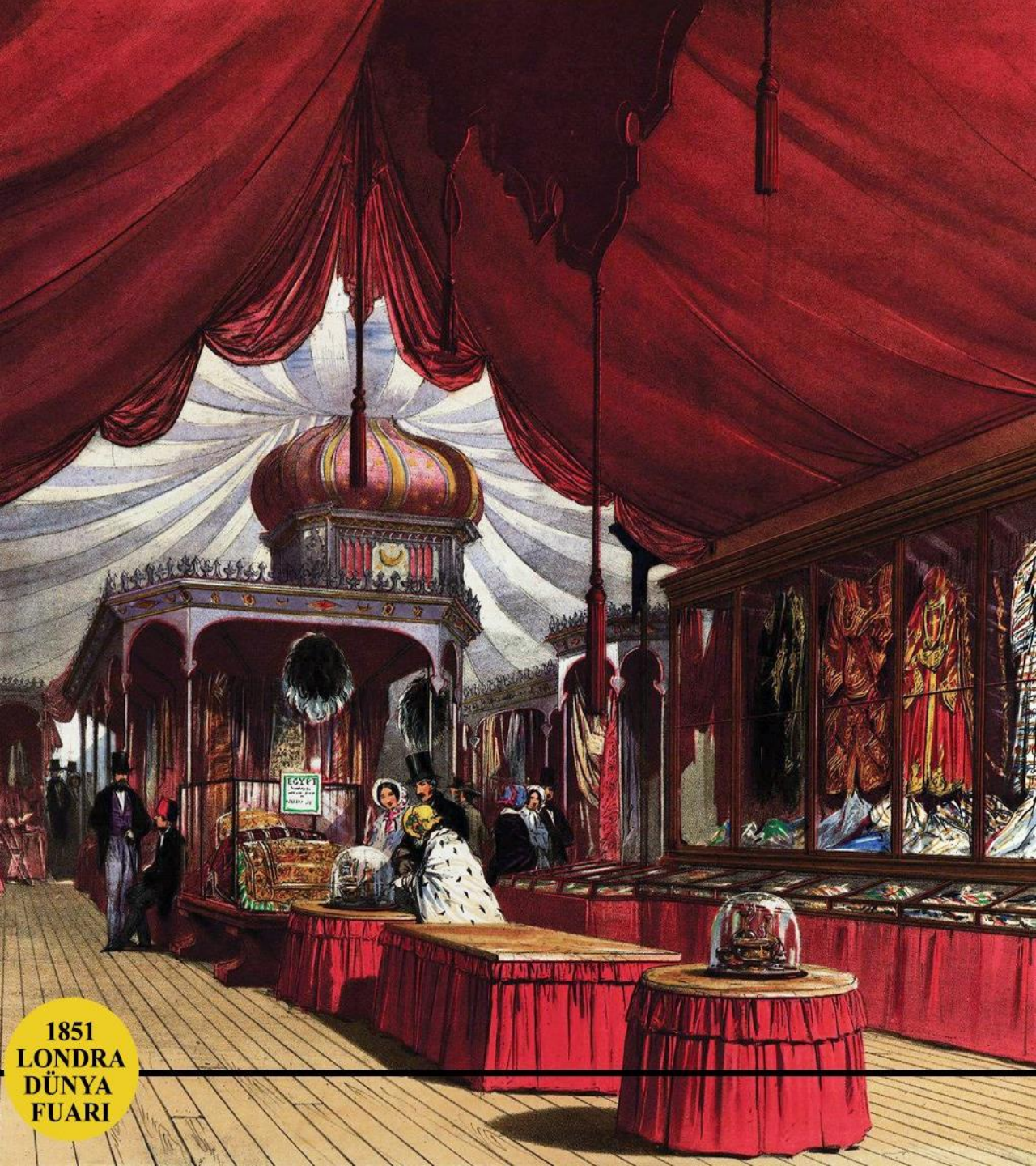


Trends on the international exhibition scene / 2011-01-24
Mårten Janson, Editor of Global Perspectives
Swedish Travelling Exhibitions



An **exhibition** is a public event at which pictures, sculptures, or other objects of interest are displayed, for example at a museum or art gallery.

Exhibition of Water Coloured Drawings, Old Bond Street, 1809



1851
LONDRA
DÜNYA
FUARI

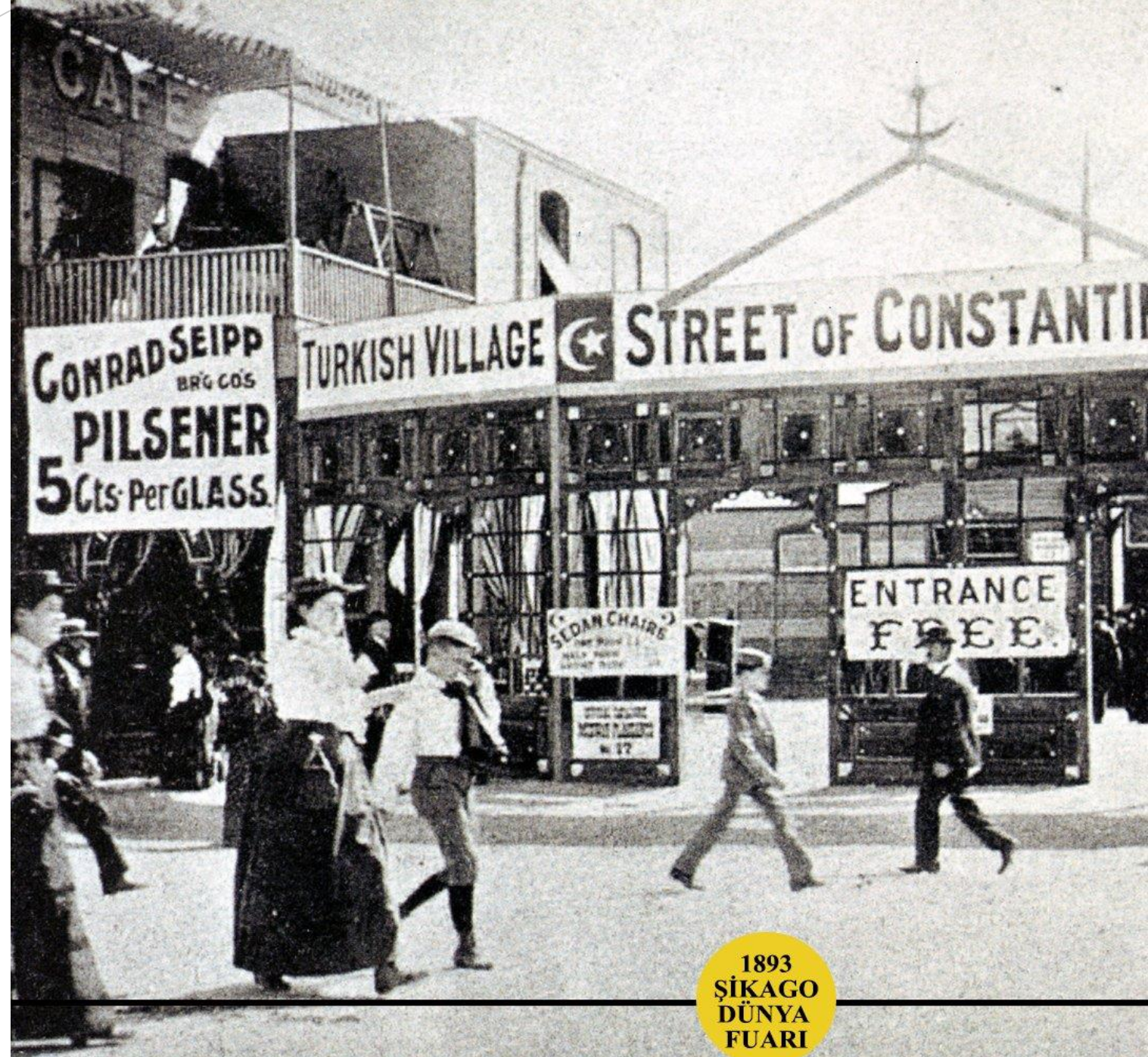
Chicago World Exhibition, 1893



Chicago World Exhibition, 1893



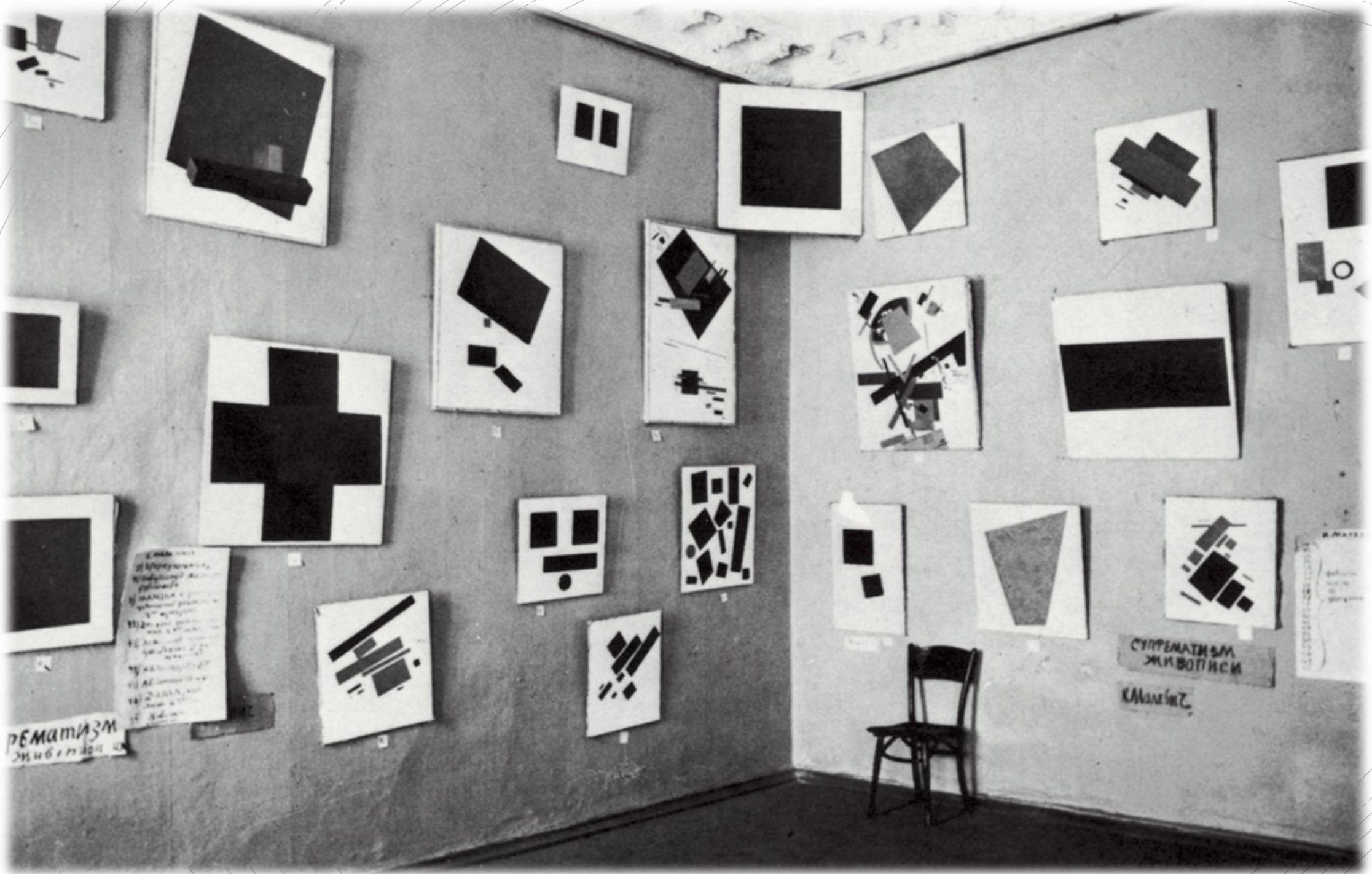
International
promoting of National
cultural heritage and
making a connection
for future industrial
collaboration.



1900 Paris World Exposition



Biennial, art exhibition 1915



An exhibition is an essay on a wall



FUTURE
EXHIBI
TIONS

Exhibition process

- Exhibition script (what is the story of the exhibition)
- Research
- Concept paper
- Schematic design
- Design development – media
- Final design
- Partners
- Construction documents
- Prototype - testing

Museum Exhibition Design Process

Museum Exhibition Design Process

The exhibition design process can be divided into five distinct phases:

- **Conceptual Development**
- **Schematic Design**
- **Design Development**
- **Final Design**
- **Construction Documents**

Exhibition Design Process - Concept Development

Concept Development provides the "road map" for the project. Where is the project going? How will it get there? What are the resources available to complete the project? Concept Development culminates with the signing of a Project Charter outlining all of the components of the project.

Project Objectives

Project Charter

Initial Budget

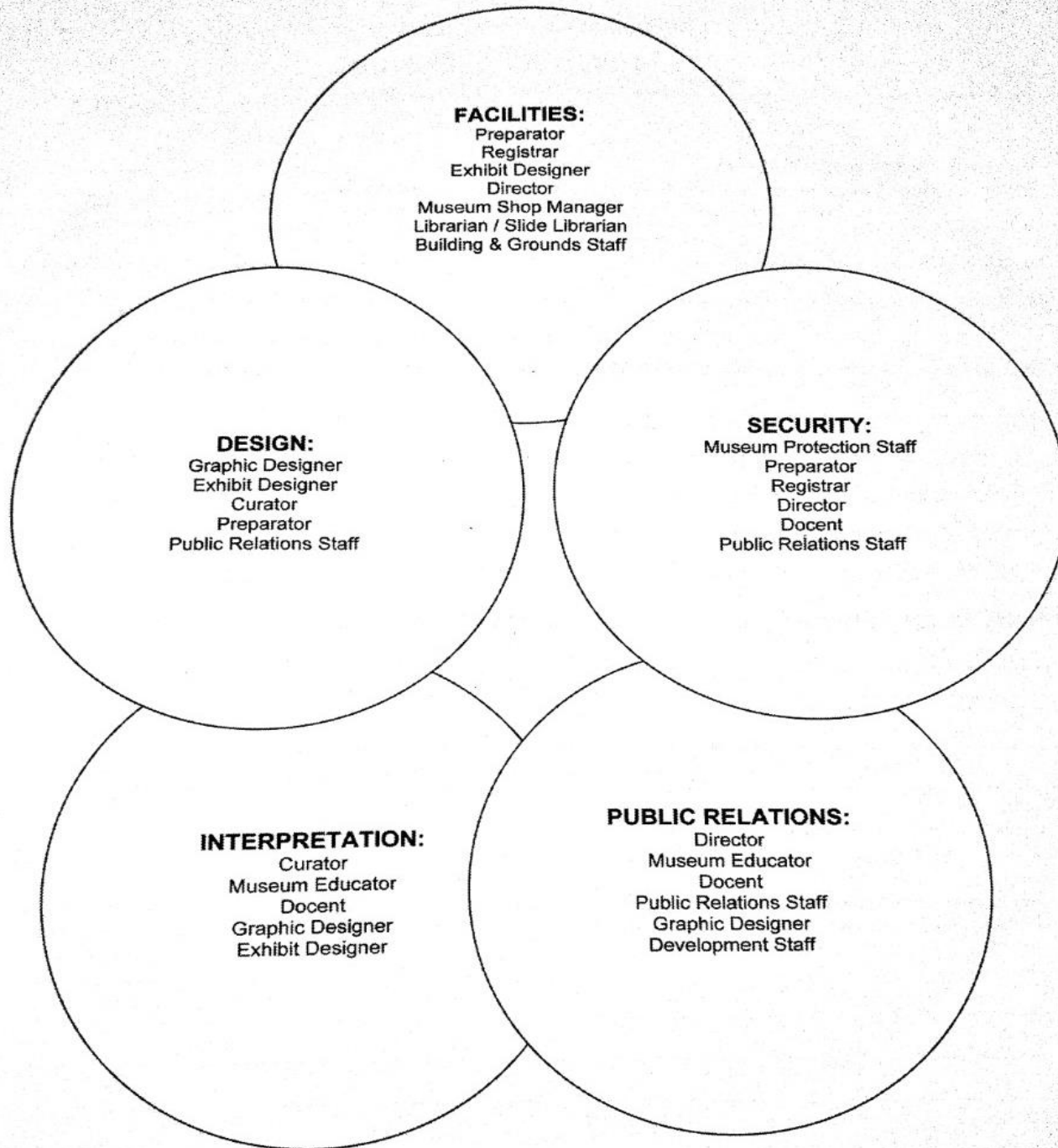
Initial Schedule

Project Narrative, included in the Project Charter

Front-end Evaluation

Umbrella Concept

"Look and Feel" – Early Sketches





The process becomes the artefact



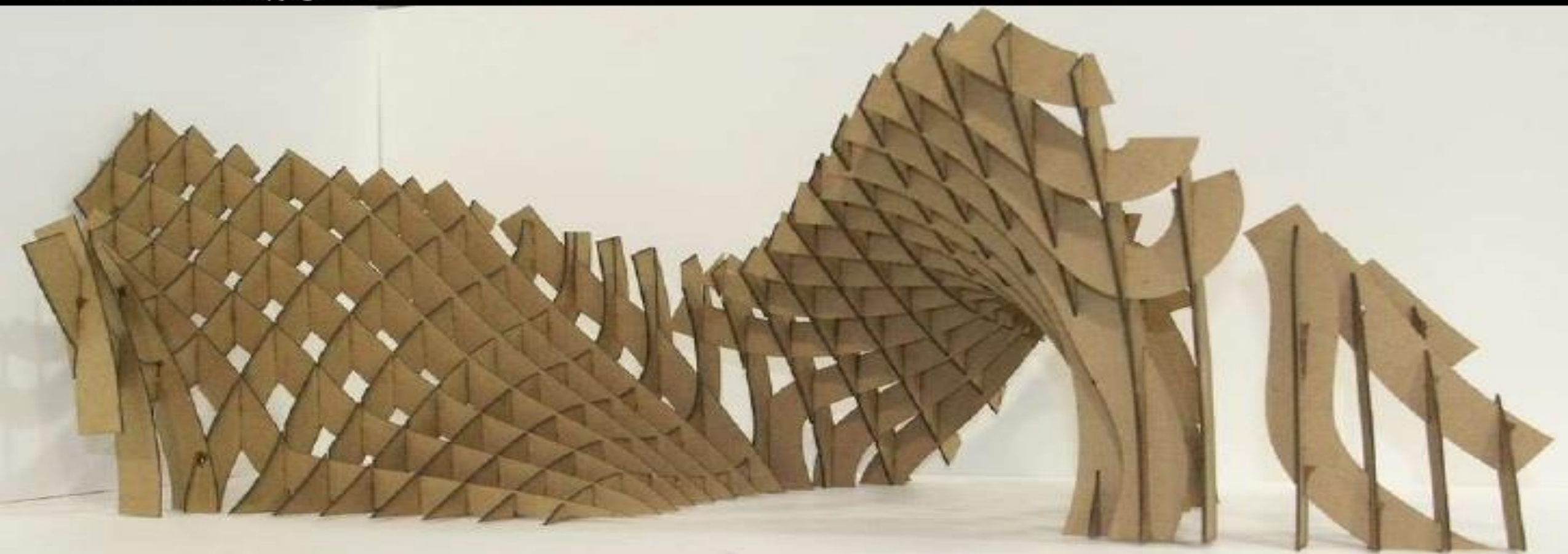
The process becomes the artefact



1000 Years of Islamic Science and Technology

١٠٠٠ عام من العلوم والتكنولوجيا الإسلامية





Technology becomes structure/structure becomes technology





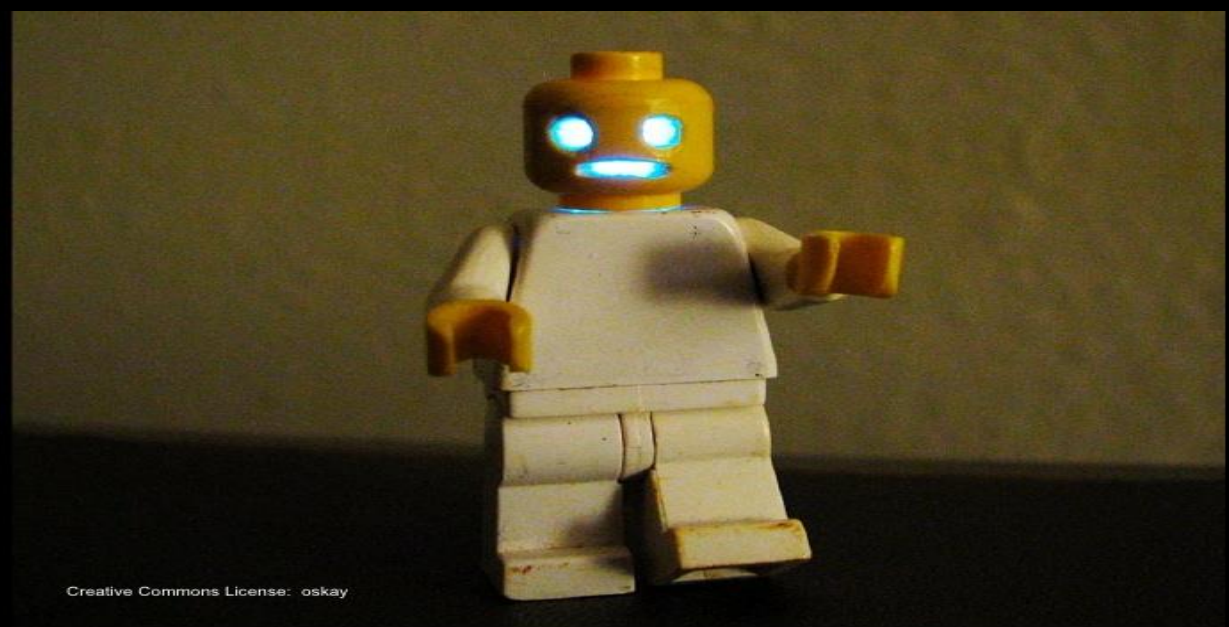
Artists are coupling with science





Creative Commons
Copyright: Gerardo Obieta

Genres and narratives intermingle



Creative Commons License: oskay

Digital tools are reshaping our mindsets

Copyright: Chi Peng



Culture forms the DNA of our future Utopia



The Museum is the new cathedral



Ordos Art & City Museum / MAD Architects, Mongolia

LOUVRE ABUDHABI

23 different galleries

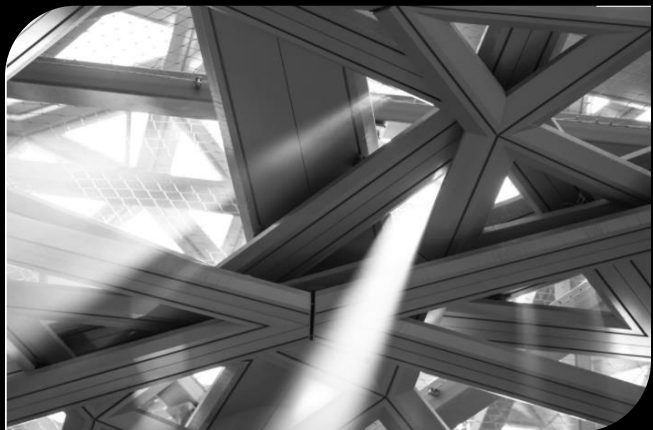
180 m diameter dome, 7850 little stars on the dome

Stainless steel

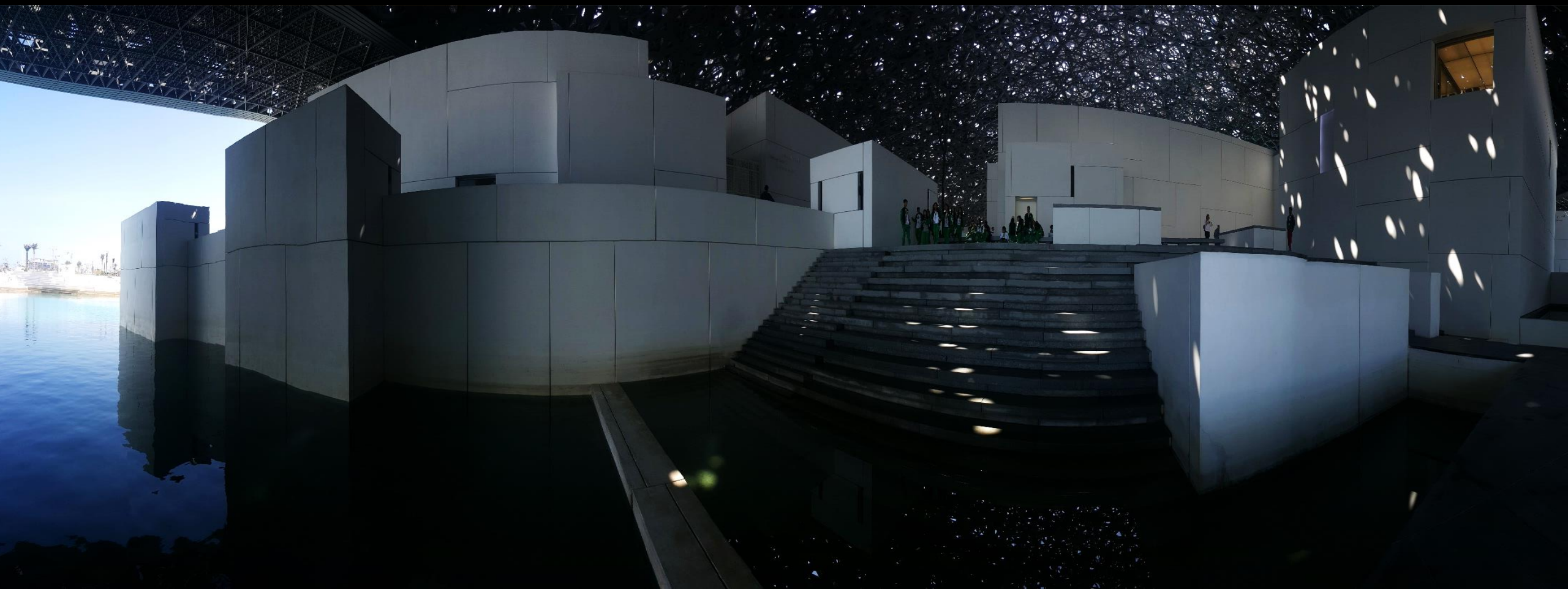
Light and shadow combination

40 mt height from the sea level

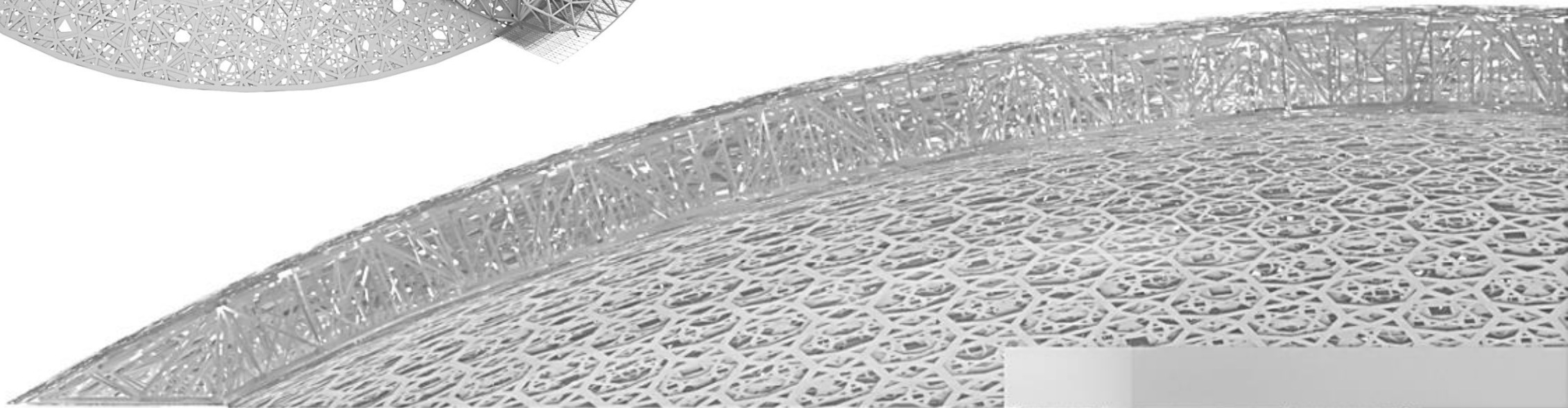
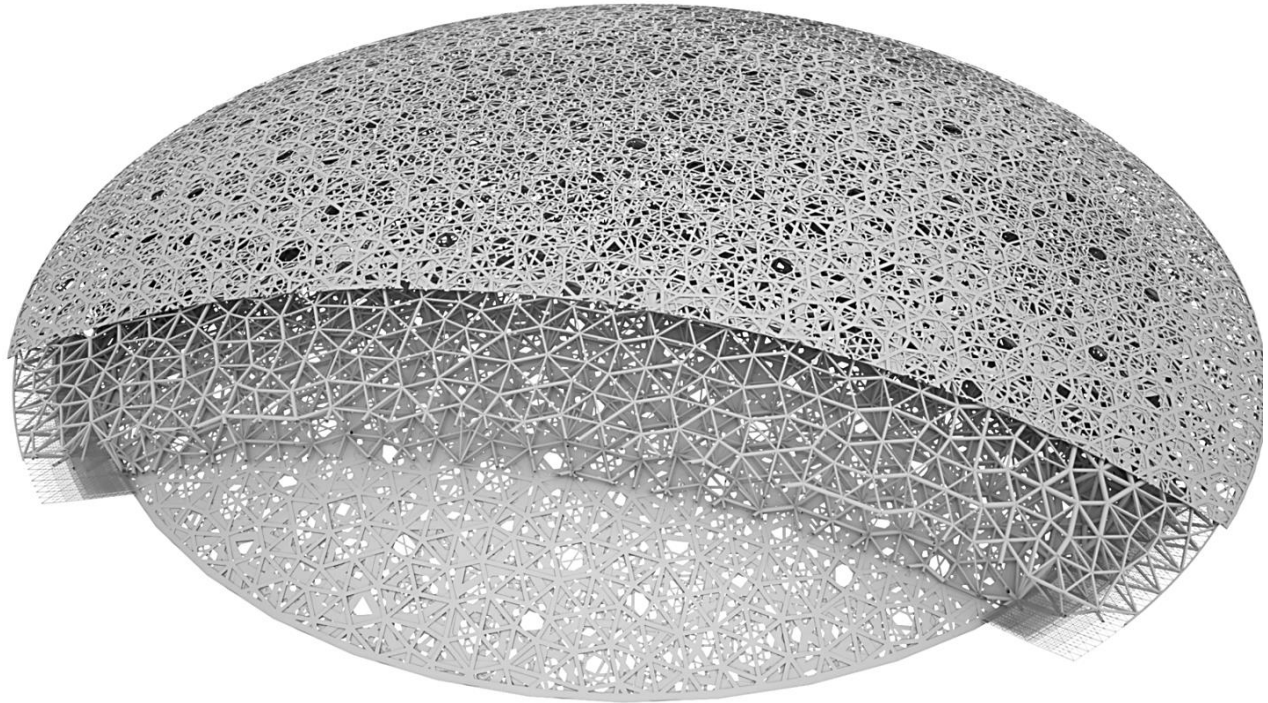




Louvre Abudhabi









OVERALL 1000 OBJECTS



Musee d'Orsay
Pampidou Art Center
France National Library
National Asian Art Museum
Versaille Museum
Rodin Museum



**Louvre Abu
Dhabi**

Mesopotamia



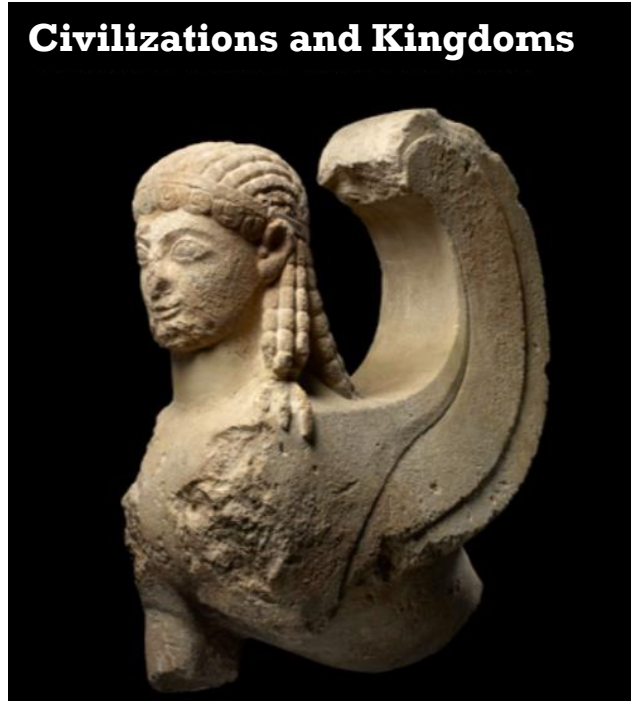
First Super Powers



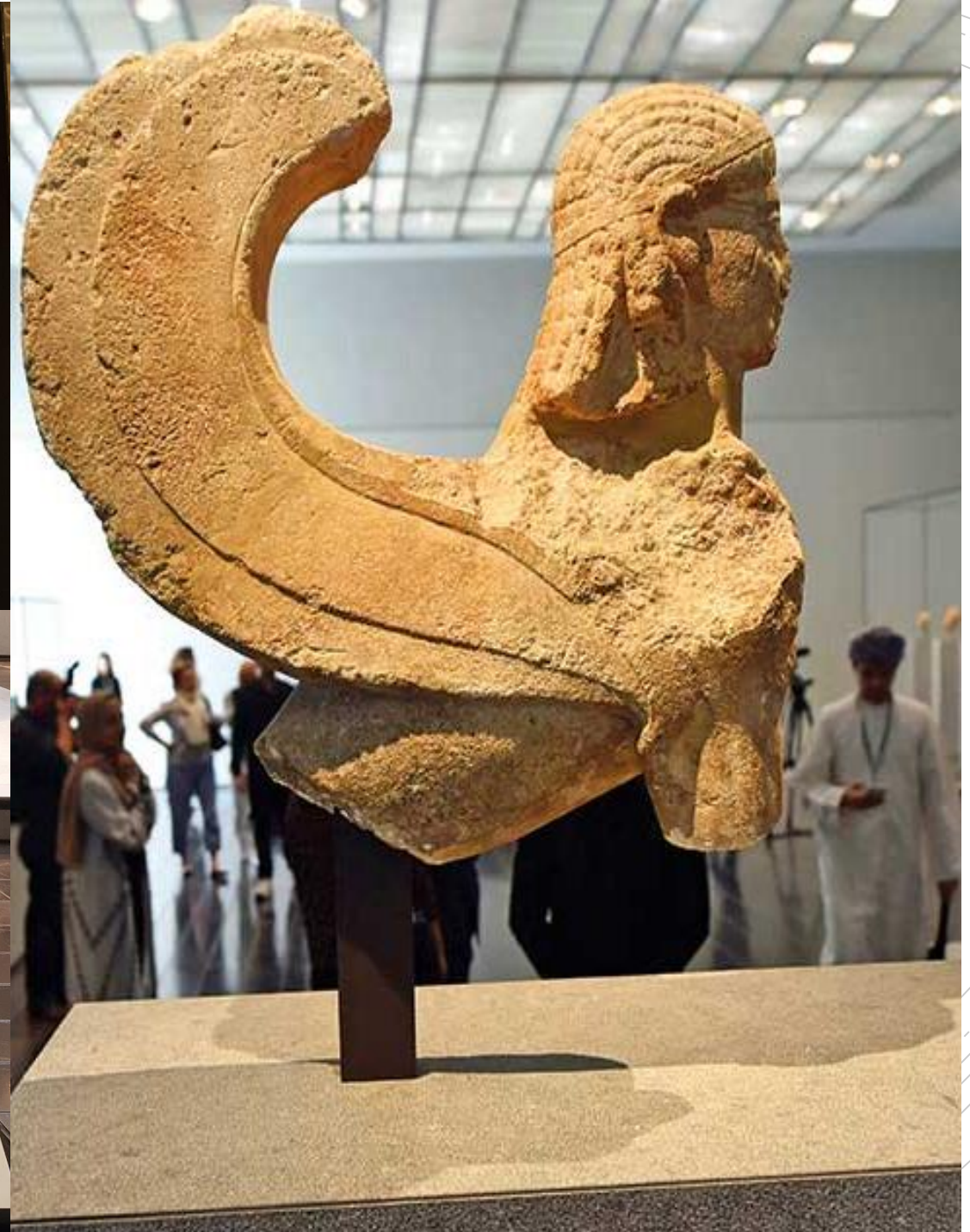
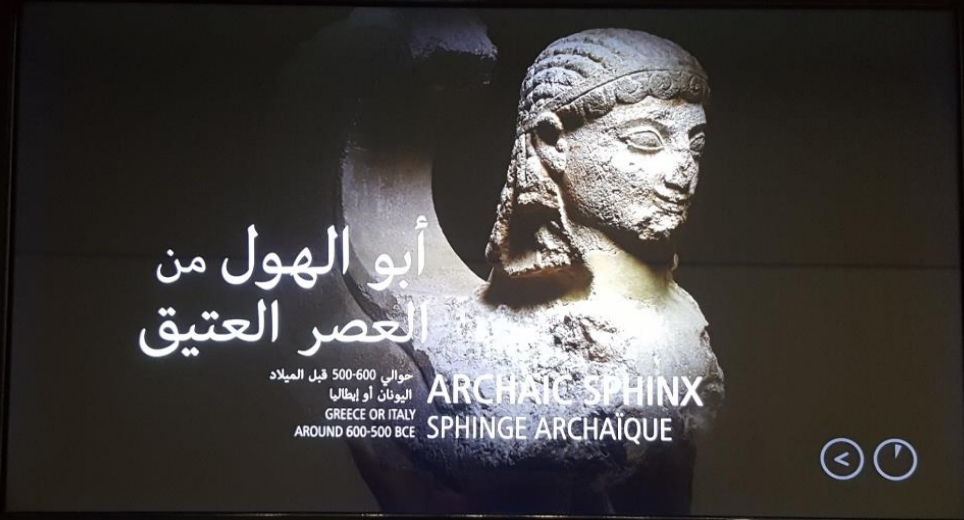
First Villagers



Civilizations and Kingdoms



Sphinx, BC. 600-500



أبو الهول، كائن أسطوري
المحضرة اليونانية (اليونان أو إيطاليا)، 600 - 500 قبل الميلاد

بعد هذا التمثال أبو الهول، كائن هجين وهمي نصف حيوان ونصف إنسان لديه جسم الأسد القوي وأجنحة الطيور المخارحة للمسقط والوجه الرقيق لامرأة. تبرز من رأسه التي تبدو مستقلة عن جسده عينان وأسنان ثوات نظرة ثابتة وشعر طويل على شكل شعائر.

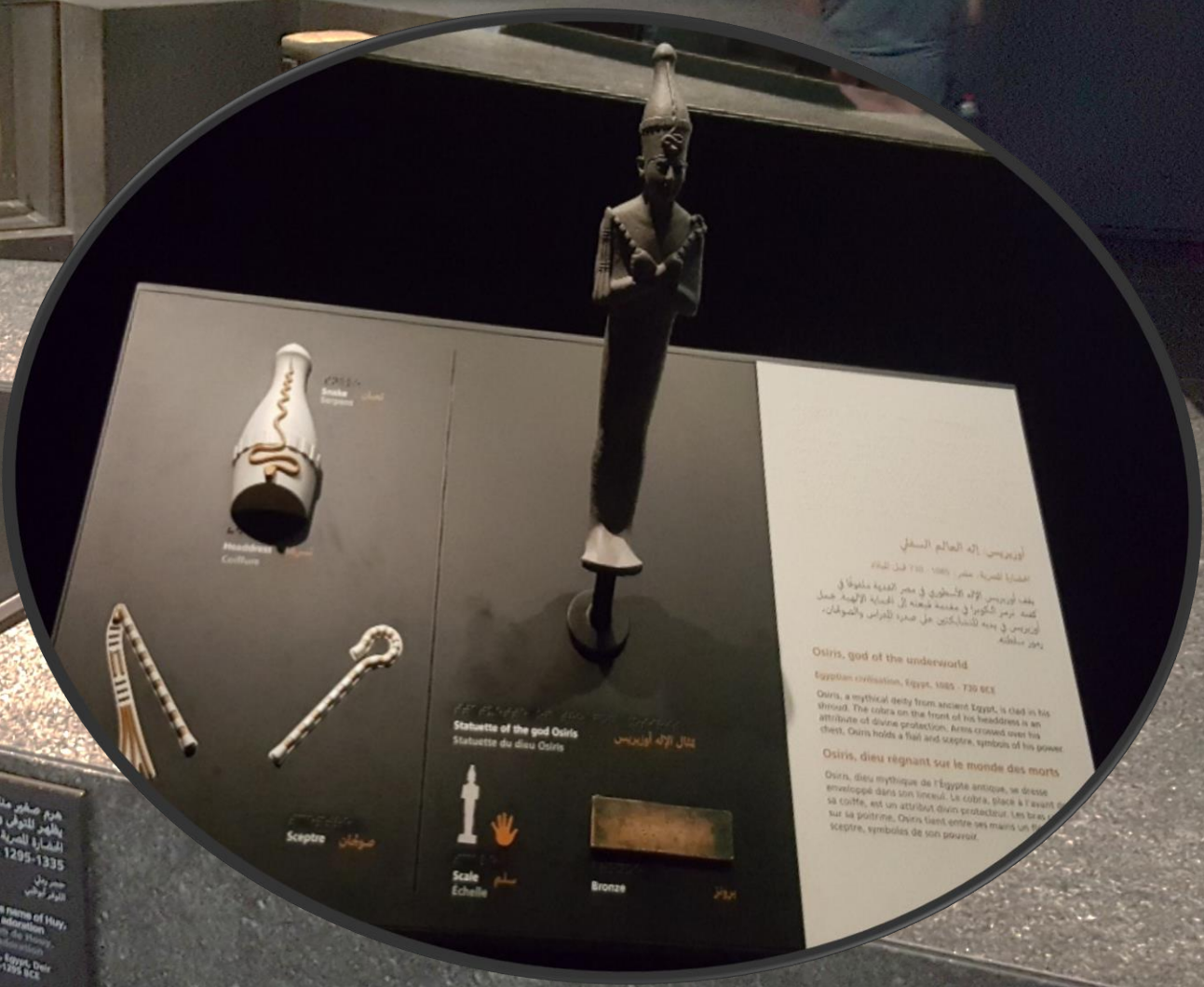
Sphinx, mythological creature
Greek civilisation (Greece or Italy), 600 - 500 BCE
This statue is of a sphinx, an imaginary creature that is half-human and half-animal. It has the powerful body of a lion, the spread wings of a bird of prey, and the delicate face of a woman. The head, which seems to rise out of the body, has large staring eyes and long braided hair.

Sphinge, créature mythologique
Cette statue représente une sphinge, un être hybride fantastique mi-animal mi-humain. Elle a le corps puissant d'un lion, les ailes déployées d'un rapace et le visage délicat d'une femme. La tête qui semble émerger du corps a de grands yeux au regard fixe et de longs cheveux tressés.

Headband
Bandeau
Volutes
تضليل
Smile
سورة
Braids
شعائر
Tresses
Wings
أجنحة
Ailes
A composite animal
Un animal composite
حيوان مركب
Statue of a sphinx
Statue de Sphinge
تمثال أبو الهول
Scale
Echelle
سليم
Limestone
Calcaire
حجر كلسي



هرم صغير منقوش باسم حوت،
 بالقرن الثاني وهو مصنوع
 من الذهب الأصفر، مصر، فير للديرة،
 المتاح في المتحف، مصر، فير للديرة،
 القرن الثاني قبل الميلاد
 حوت
 الدوار الذهبى
 Pyramidion with the name of Hwt,
 decorated shown in adoration
 of the goddess Isis, made of
 Egyptian gold, Egypt, 2nd
 century BC, 1295-1295 BC
 Louvre Abu Dhabi



Osiris
 Headdress
 كورون
 القرن الثاني قبل الميلاد



Sceptre
 سوطان



Scale
 ميزان



Statuette of the god Osiris
 Stalutette du dieu Osiris
 تمثال الإله أوزيريس

Bronze
 برونز

أوزيريس، إله العالم السفلي
 الحضارة المصرية، مصر، القرن الثاني قبل الميلاد
 يعد أوزيريس الإله الأسطوري في مصر القديمة مالموتاً في
 كونه رمز الكوبرا في مقدمة جسده إلى الحياة الإلهية. حمل
 أوزيريس في يديه لتتألف من عصا القوس والشمس.
 رمز سلطانه
 Osiris, god of the underworld
 Egyptian civilization, Egypt, 1300 - 1290 BCE
 Osiris, a mythical deity from ancient Egypt, is clad in his
 shroud. The cobra on the front of his headdress is an
 attribute of divine protection. Arms crossed over his
 chest, Osiris holds a flail and scepter, symbols of his power
 Osiris, dieu régnant sur le monde des morts
 Osiris, dieu mythique de l'Égypte antique, se dresse
 enveloppé dans son linceul. Le cobra à l'avant de
 sa coiffe, est un attribut divin protecteur. Les bras
 sur sa poitrine, Osiris tient entre ses mains un
 sceptre, symboles de son pouvoir.

القفاو

جزء من الفريز القرآني

Part of the Quranic frieze
Élément de la frise coranique

جزء من الفريز القرآني

Fragment of a frieze carved with Quranic verses

Ghurid empire, Northern India, Rajasthan, About 1200

This object of architectural decoration is composed of 13 pieces. It is a frieze and probably adorned a monument. The inscription is carved in thick, easily legible lettering, with a plant decoration in the upper left corner, and proclaims the supremacy of the Islamic creed.

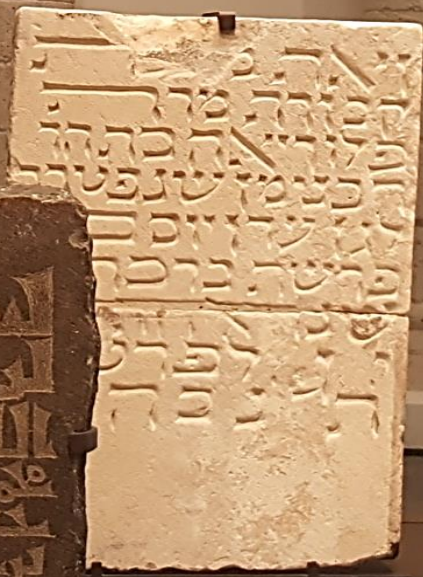
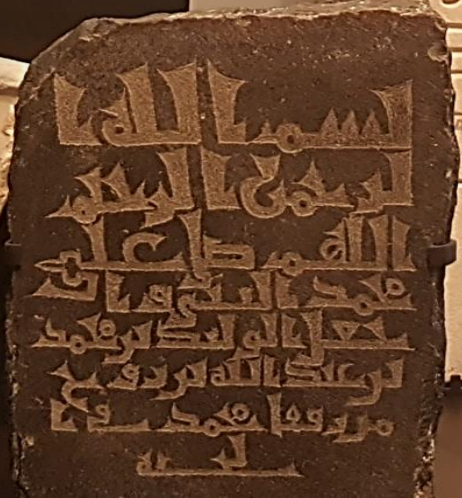
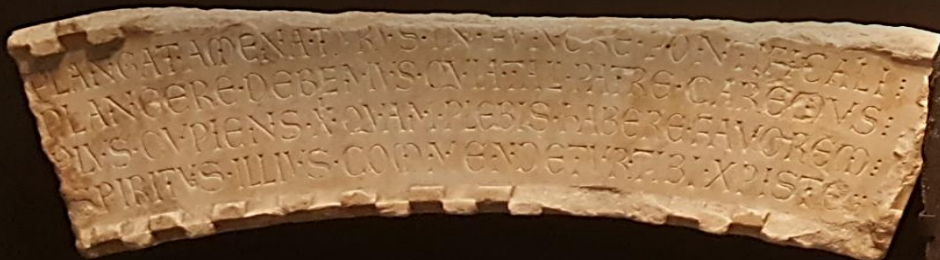
Fragment de frise sculptée de versets coraniques

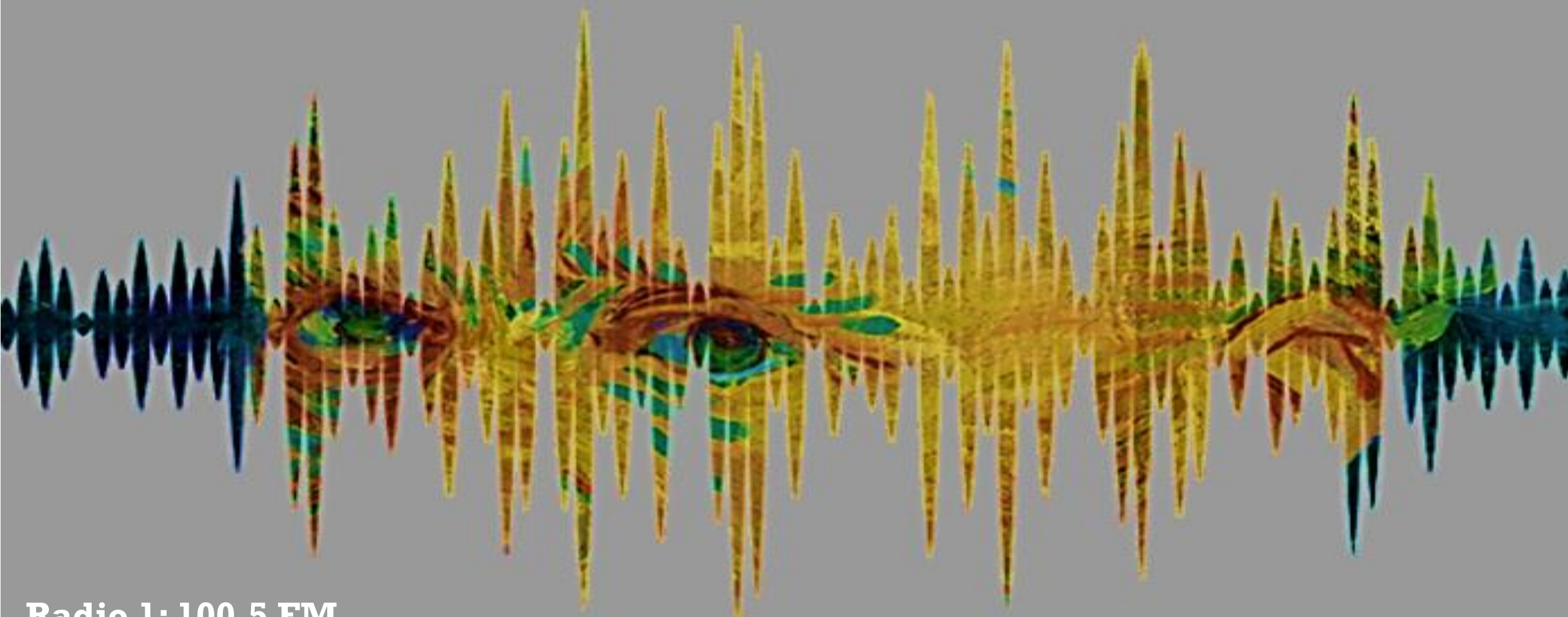
Cet élément de décor architectural est un fragment d'une frise composée de 13 fragments qui ornait probablement un monument. L'inscription est sculptée dans une épaisseur facile à lire, avec un ornement végétal dans le coin supérieur gauche. Elle proclame la suprématie de la religion islamique.

Scale
Échelle

Stoneware
Grès

حجر رصني





Radio 1: 100.5 FM
Classic FM: 91.6 FM
Emarat FM: 95.8 FM



Art Highway







Zayed National Museum



Guggenheim Museum, Abu Dhabi

Museum of the Future, Dubai



Katar National Museum, Doha





Desert Rose Selenite is a unique, natural crystal formation that is formed from the combination of water, wind and sand. It occurs in salt water basins where water evaporates over thousands of years, leaving these Selenite formations. It carries the energies of protection, prosperity and energy purification.



ENERGY MUSE
JEWELRY



Informational cards providing details about the artifacts displayed in the case.





The Museum of the future?

- Gamification
- Contacting the Shallows
- Maker Movement (make and remake)
- Selfie
- Philanthropy
- Museum 4.0 (previsit orientation etc)
- Technology
- Research
- Previsit-Visit-Postvisit
- Community
- Intellectual Property

ckaradeniz@ankara.edu.tr

Photos: Ceren
Karadeniz