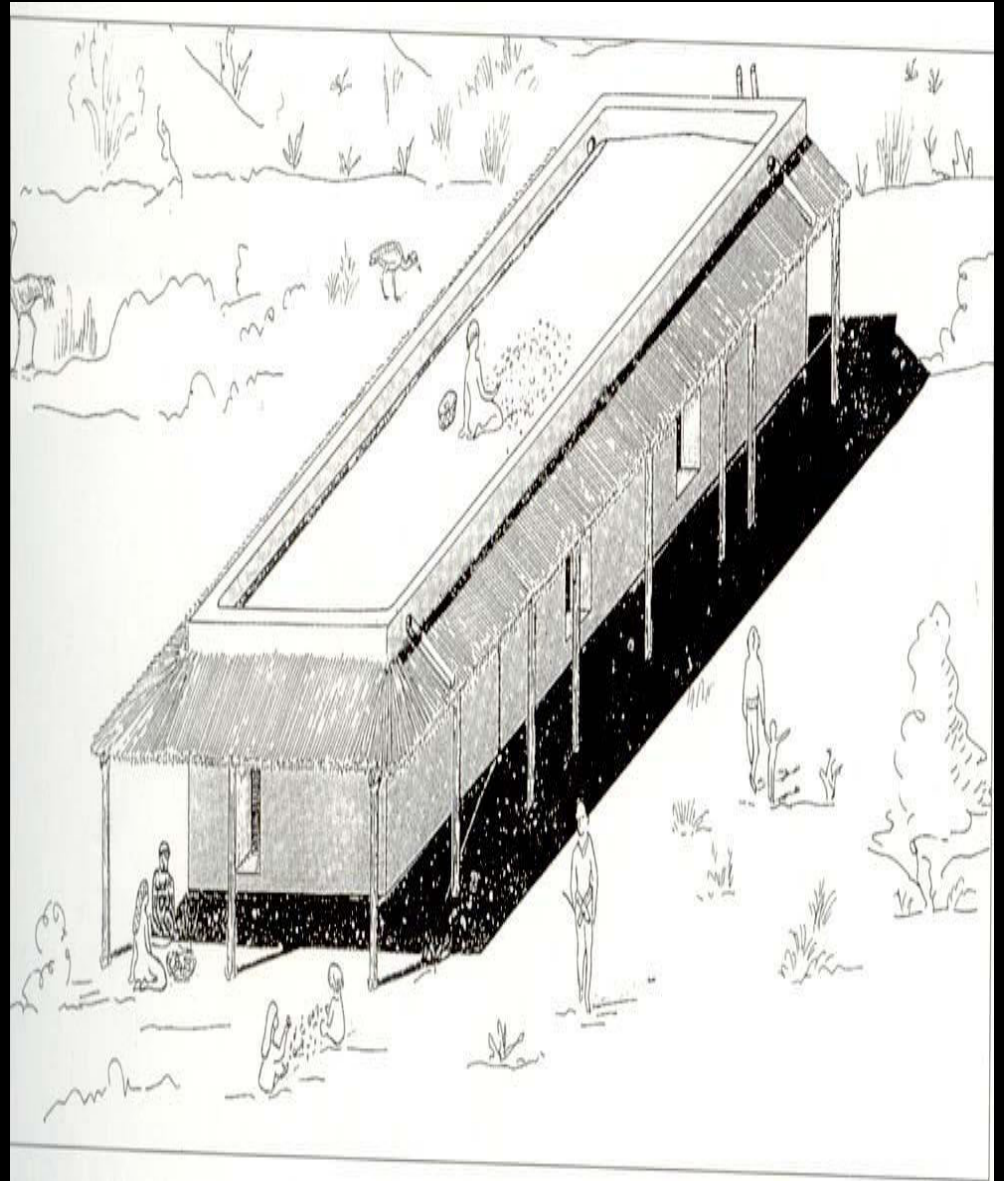
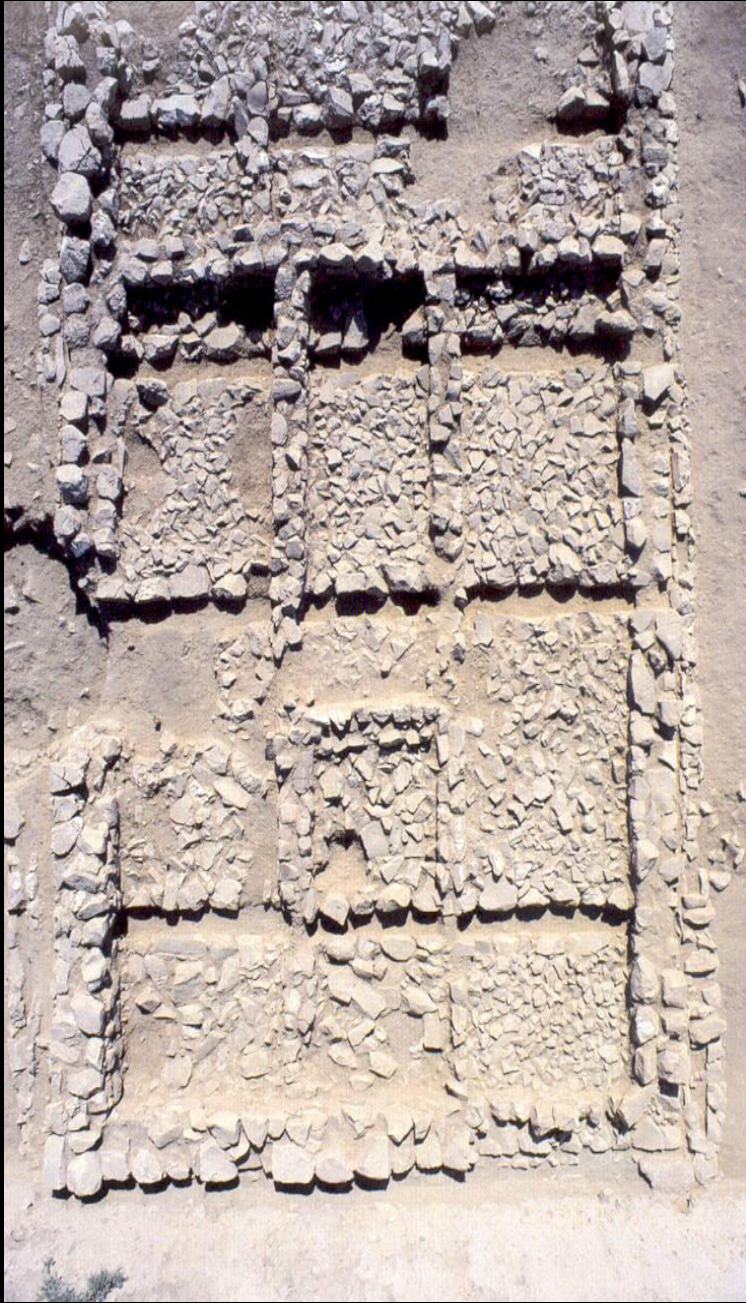
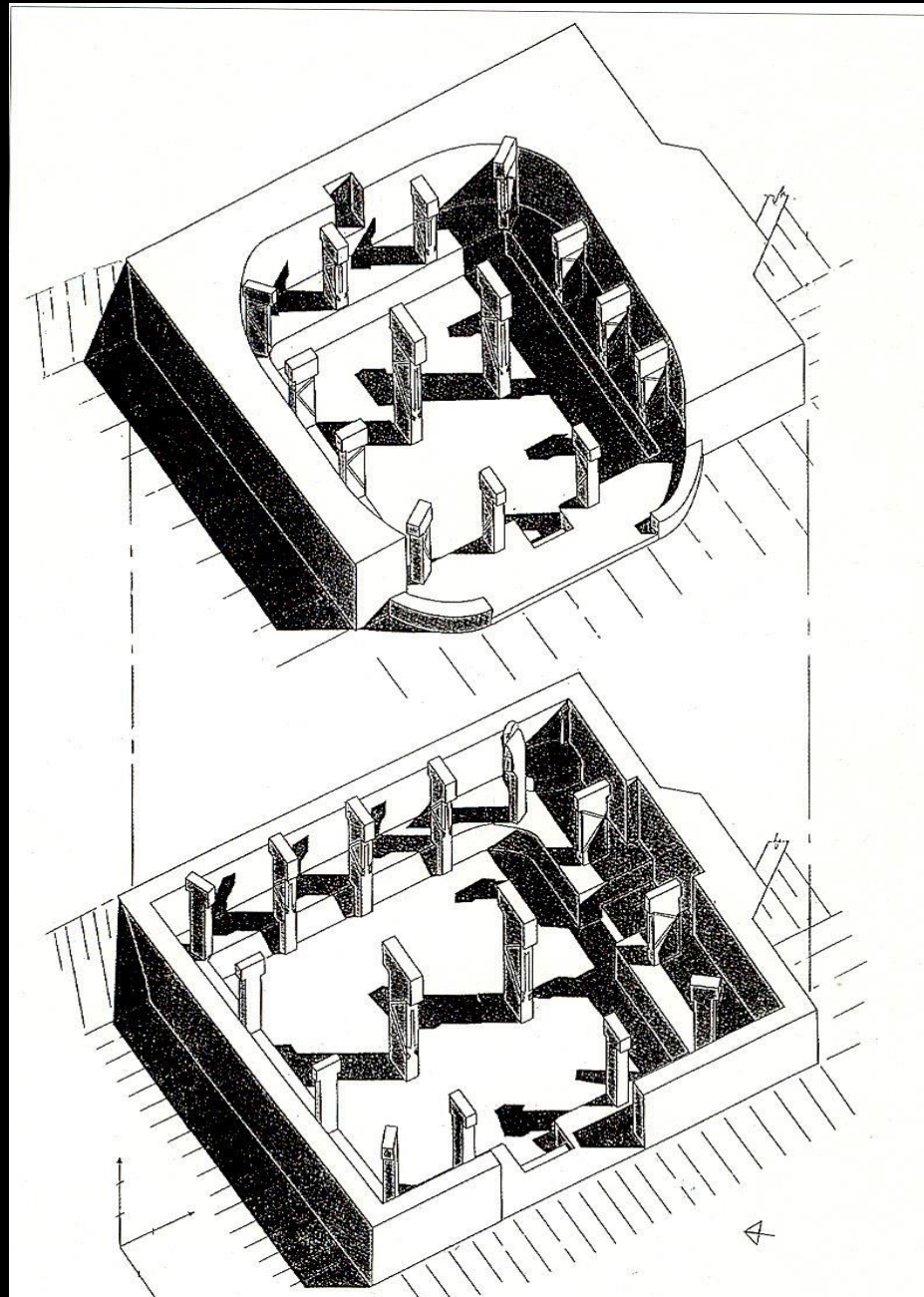
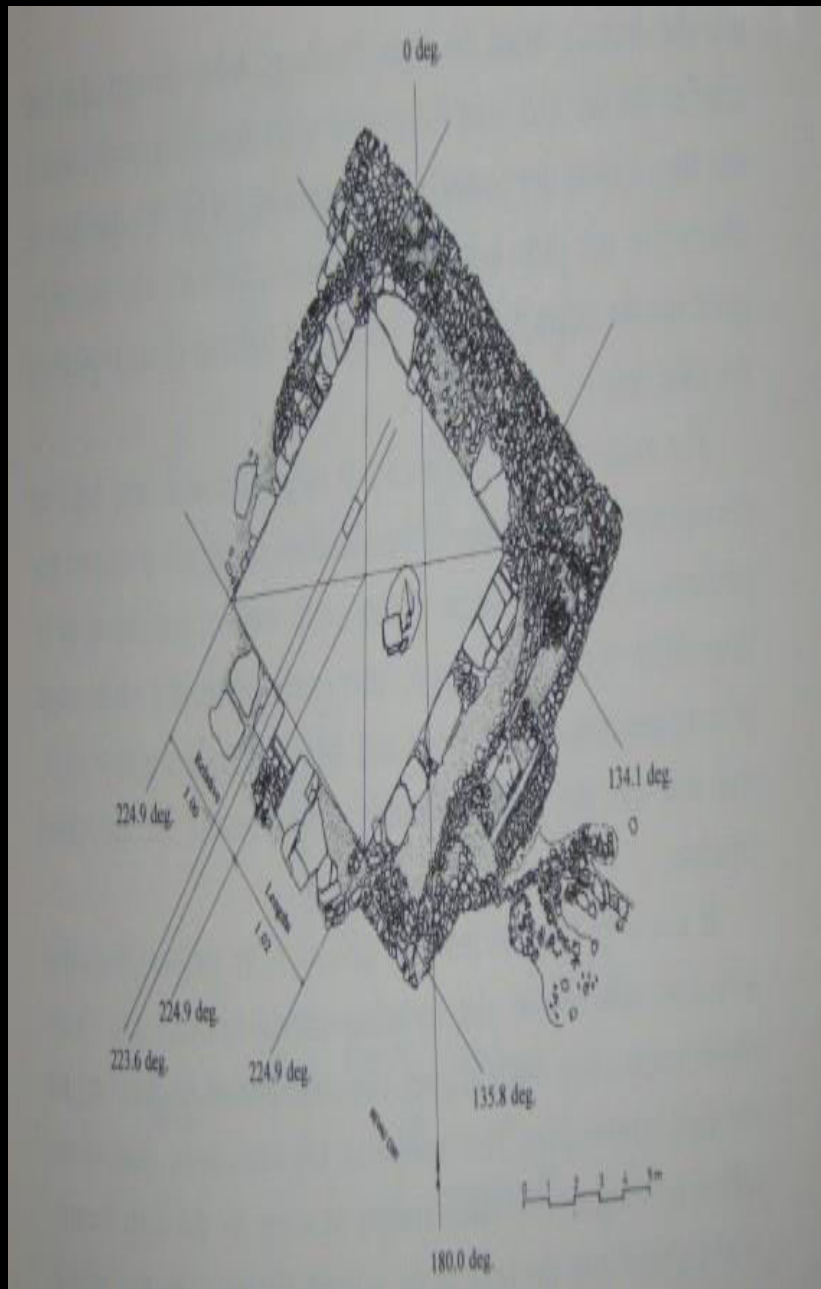


Fig. 5. Nevalı Çori I. Reconstruction of settlement II





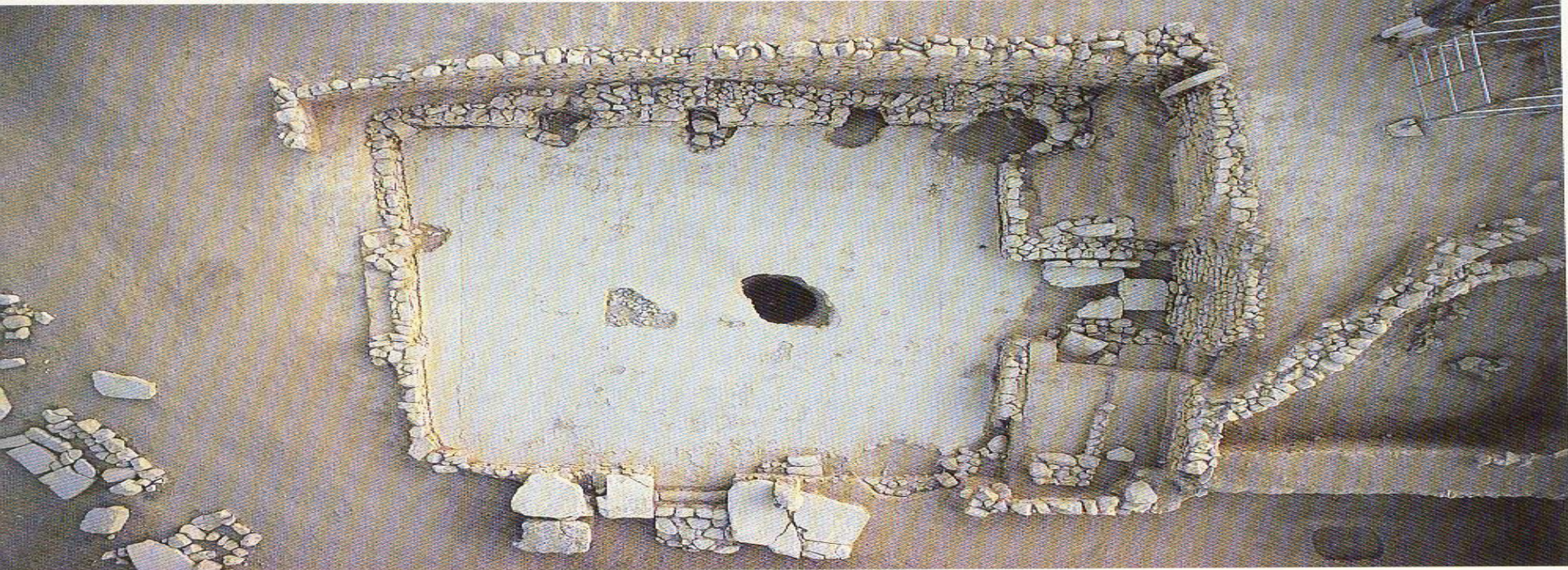
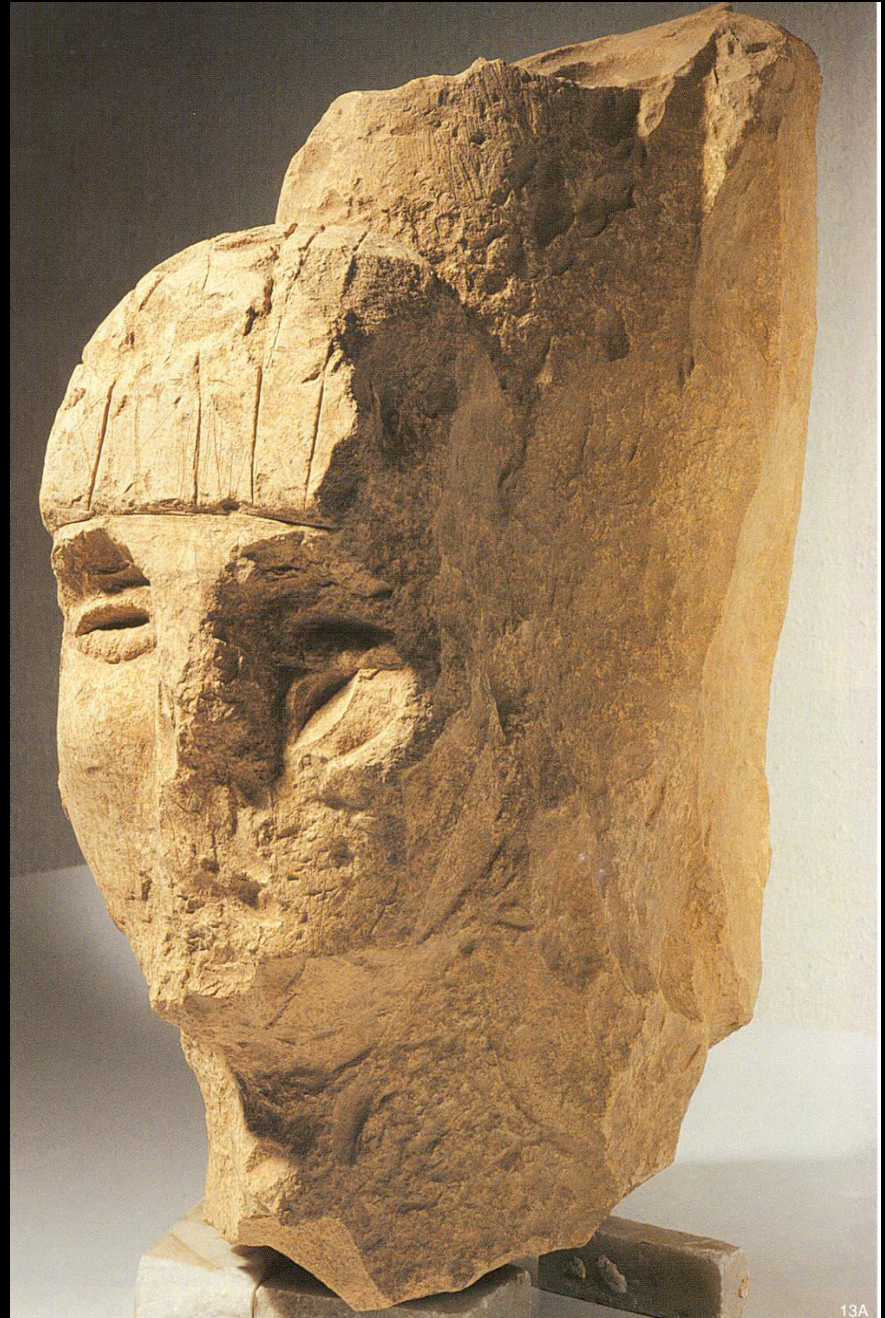
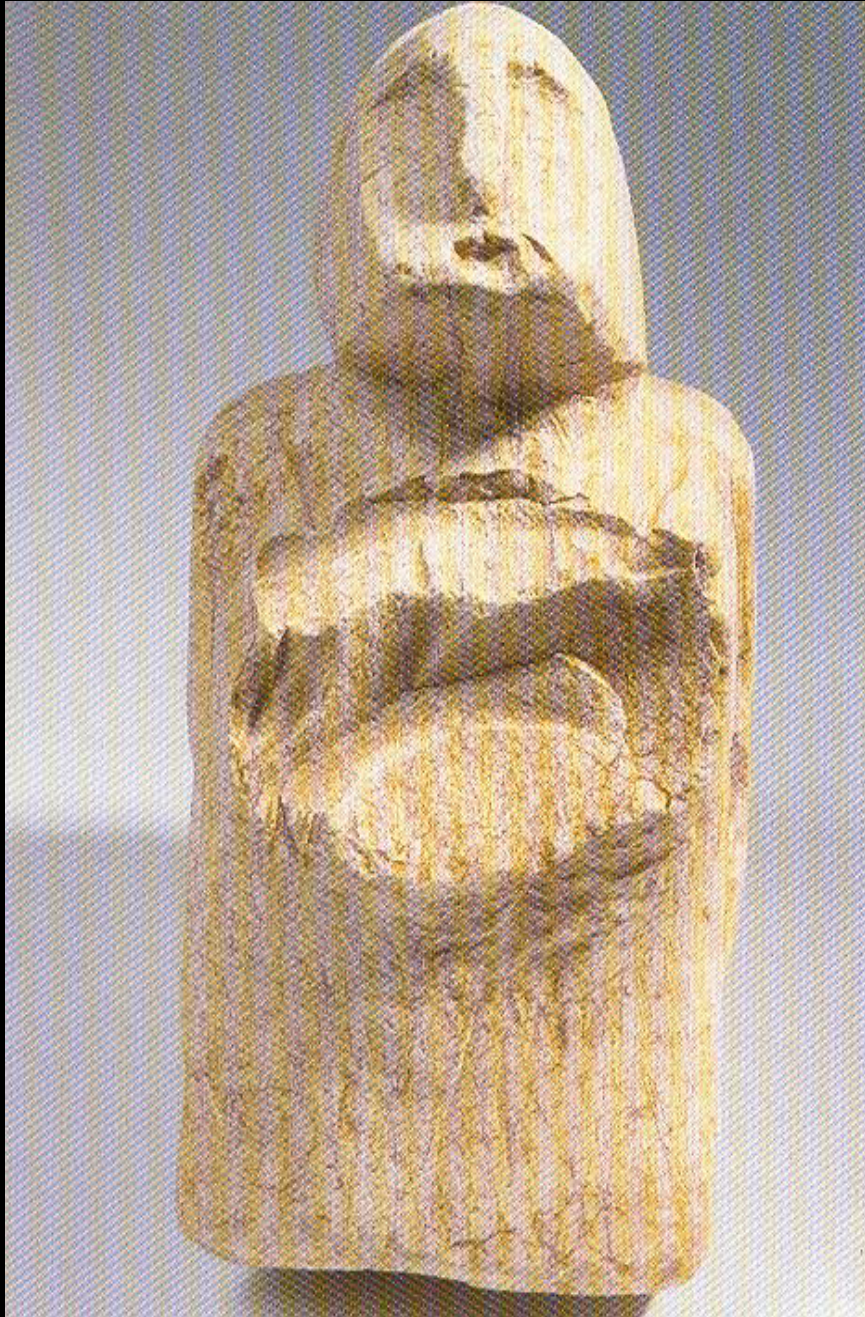


Fig. 7. Nevalı Çori, Cult building II



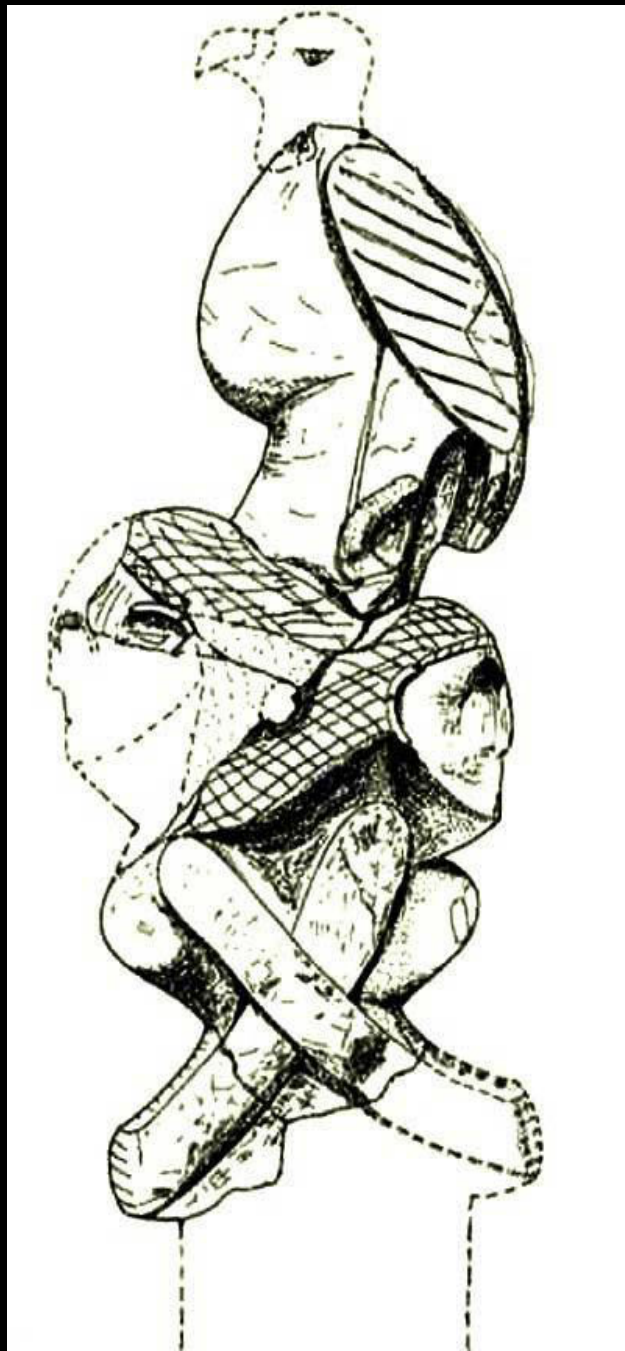
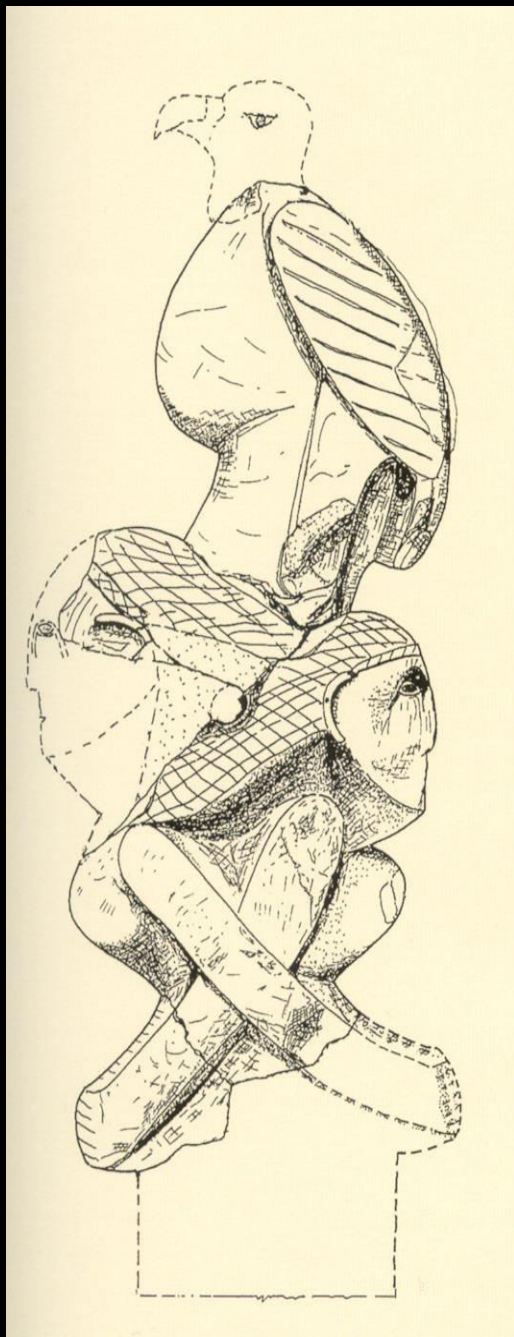




**"Totem dikmesi" İnsan**  
Buluntu yeri: Nevali Çori  
Orta PPN B; MÖ 8500 – 7900  
Kireçtaşı  
Y: 56 cm, G: 33 cm  
Şanlıurfa Müzesi, Env. No. NÇ 91/100







## KAYNAKÇA

\*Anonim; Türkiye'de Neolitik Dönem : Anadolu'da Uygarlığın Doğuşu ve Avrupa'ya Yayılımı - 2 Cilt takım. Arkeoloji ve Sanat Yayınları. İstanbul

\*Komisyon; The Neolithic in Turkey - The Tigris Basın / Volume 1 - Arkeoloji ve Sanat Yayınları. İstanbul

