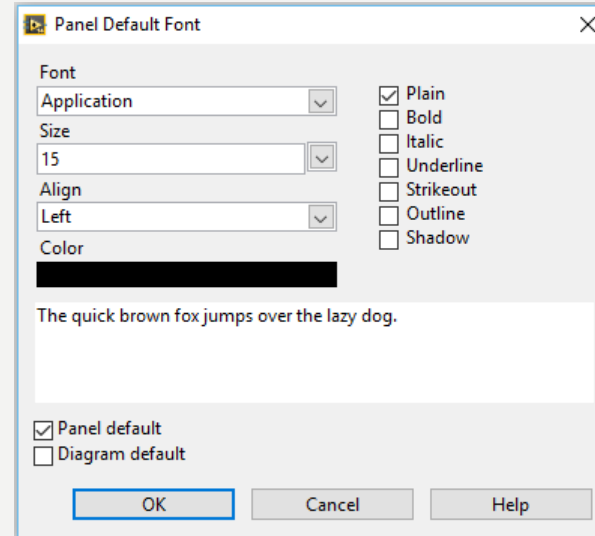
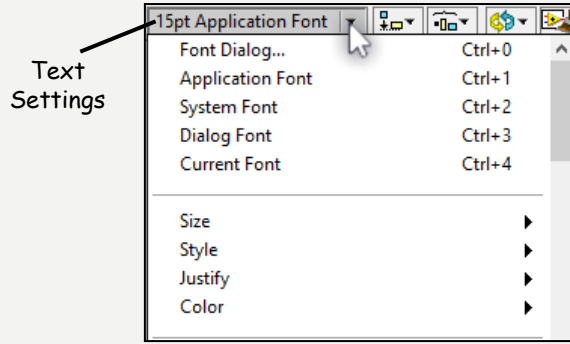


# **GRAFİKSEL PROGRAMLAMAYA GİRİŞ**

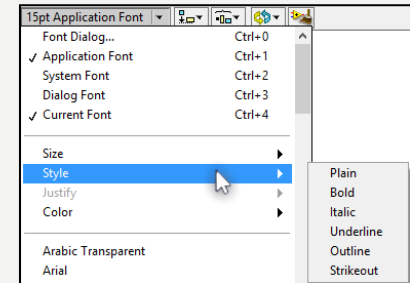
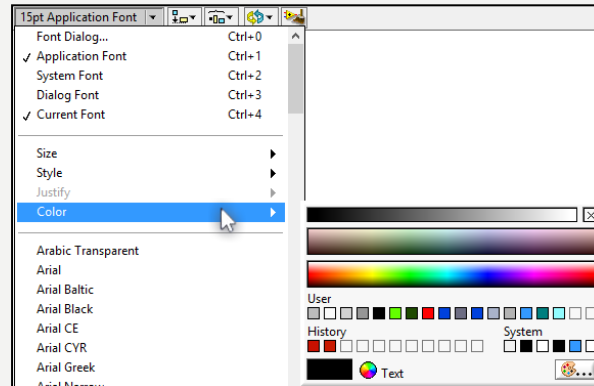
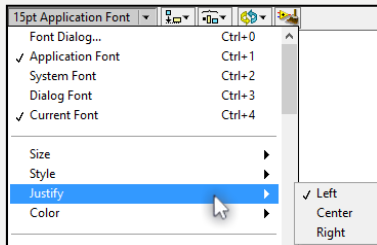
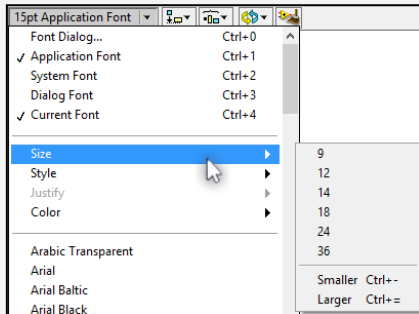
**ZTM126**

**12. HAFTA**

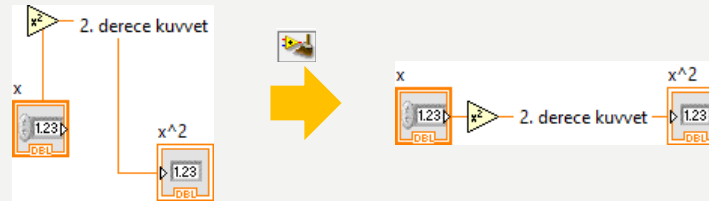
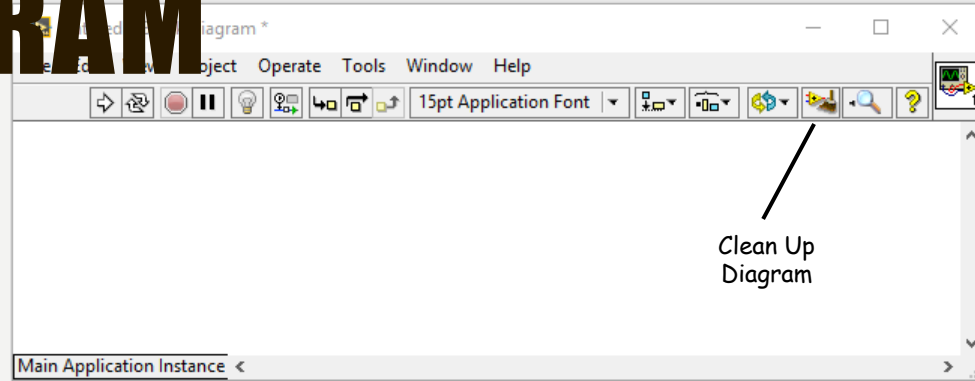
# FONT, STİL VE METİN BÜYÜKLÜĞÜNÜ DEĞİŞTİRME



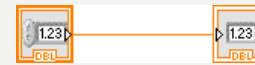
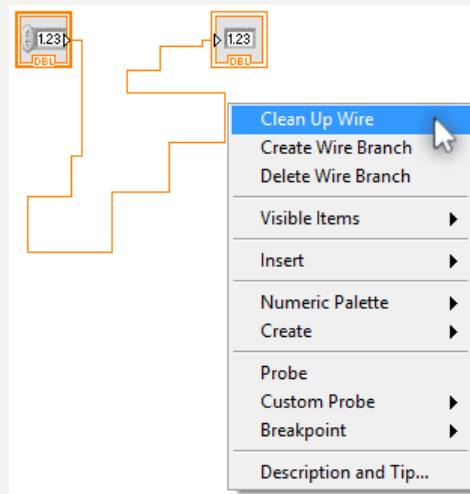
# TEXT SETTINGS ALT MENÜLERİ



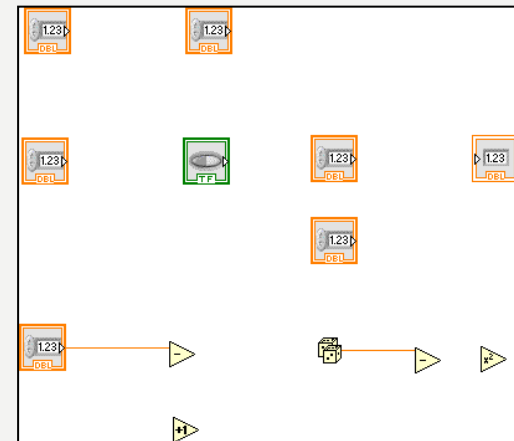
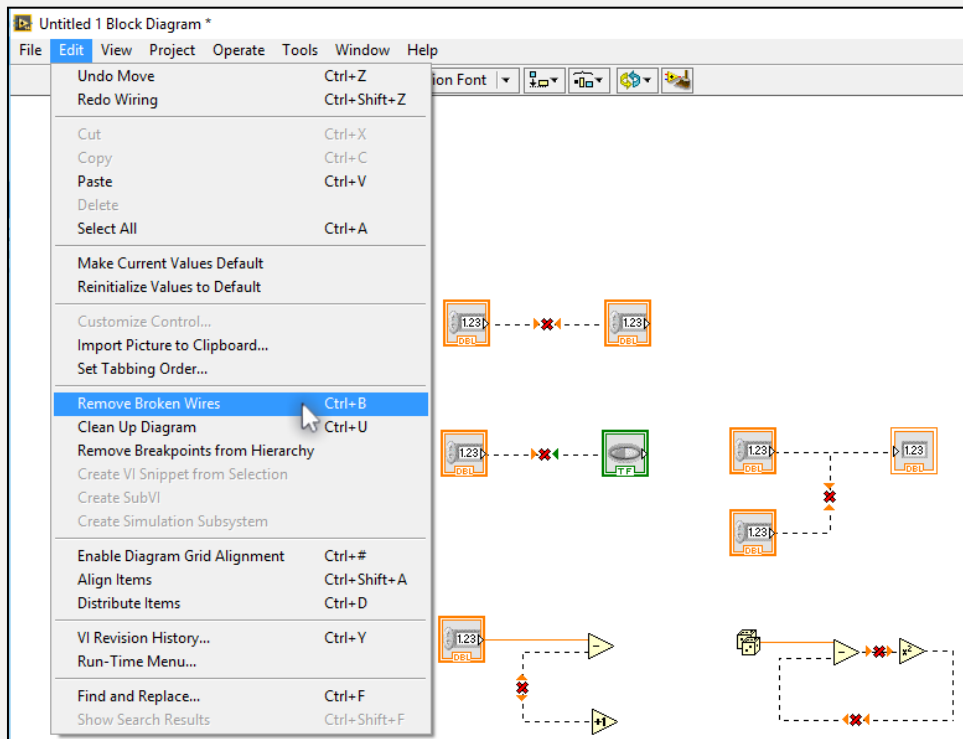
# BLOCK DİYAGRAMI TOPARLAMA-CLEAN UP DIAGRAM



# BLOCK DİYAGRAMI TOPARLAMA-CLEAN UP WIRE



# REMOVE BROKEN WIRES



# HATALARI BULMA-KIRIK RUN DÜĞMESİ



The image shows a block diagram with three 'Numeric' blocks. 'Numeric 1' and 'Numeric 2' are on the left, and 'Numeric 3' is on the right. Each block has a 'DBL' terminal. A wire connects 'Numeric 2' to 'Numeric 3', but it also branches to 'Numeric 1', causing an error. The error list window is open, showing the error message: 'This wire connects more than one data source.'

**Error list**

Items with errors

- Untitled 1

1 errors and warnings  Show Warnings

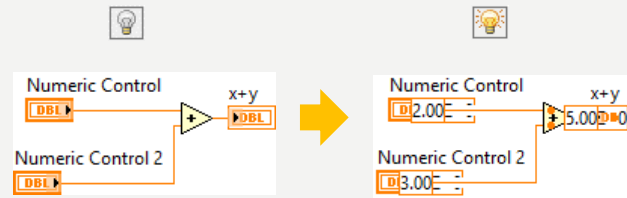
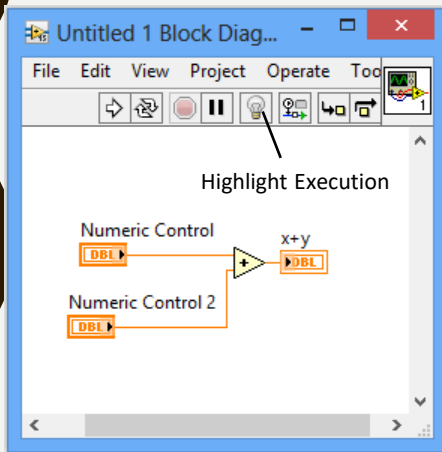
- Block Diagram Errors
  - This wire connects more than one data source.

Details

A wire can be connected to only one data source, such as a control's terminal or a function output. This wire is connected to more than one source. If one source is a control, you may wish to change it to an indicator. Otherwise, you must disconnect all but one of the sources.

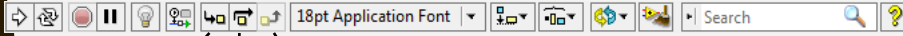
Close Show Error Help

# HIGHLIGHT EXECUTION





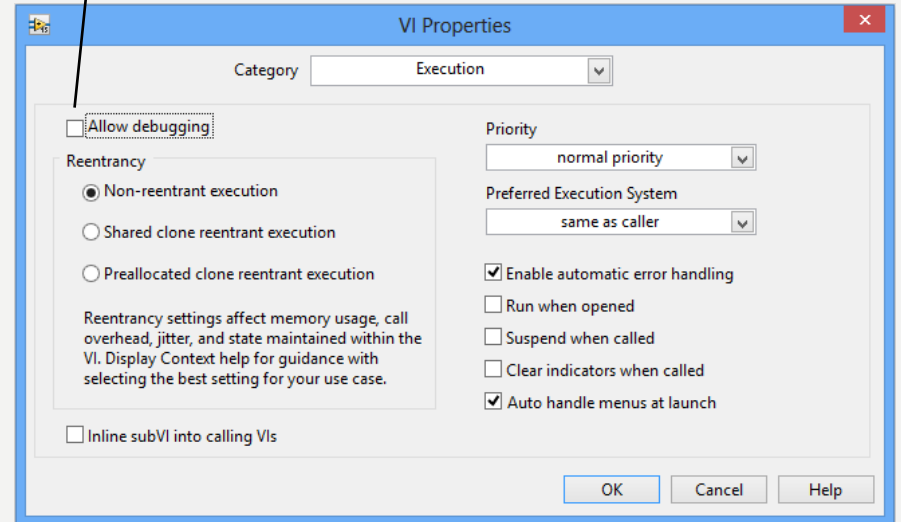
# BİR VI VEYA SUBVI'İ ADIM ADIM ÇALIŞTIRMA



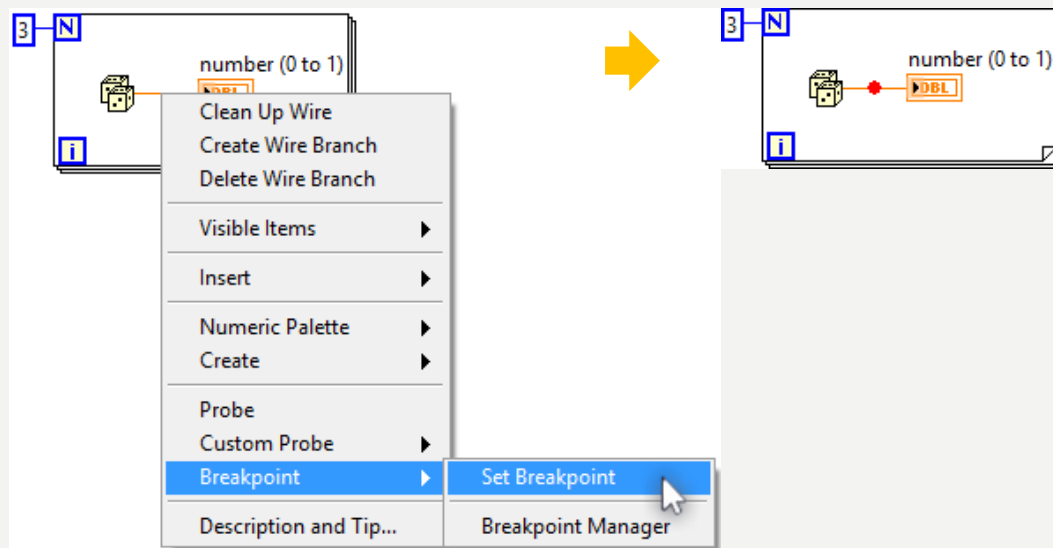
Step Into Step Over Step Out

Bu konuya ileride tekrar değineceğiz.

Allow debugging'i seçili olmaktan çıkararak VI'ın hızını arttırabilir ve bellek kullanımını azaltabilirsiniz.



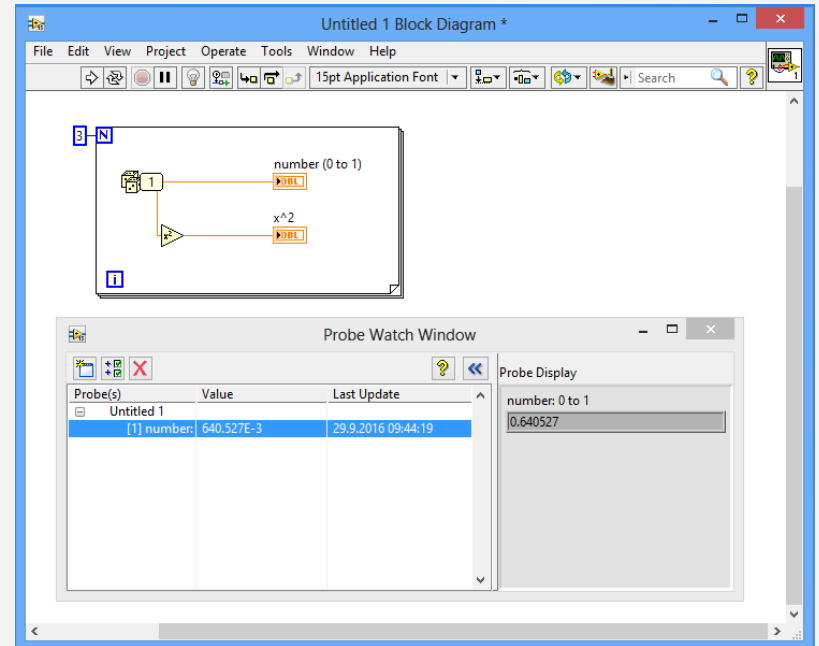
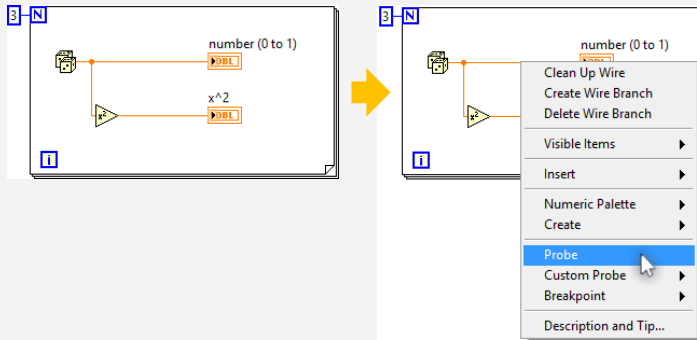
# DIAGRAMA DUR İHTARI (BREAKPOINT) YERLEŐTİRME



# HAT ÜZERİNE PROB EKLEME



Probe Data



# Kaynaklar

1-Mavi, A. (2021) LabVIEW Web

Sayfası:<https://slideplayer.biz.tr>, Erişim Tarihi:  
31.01.2021

2- Anonim (2021) Inroduction to LabVIEW Web

Sayfası: <https://slideplayer.com> , Erişim Tarihi:  
31.01.2021

# TEŞEKKÜRLER