

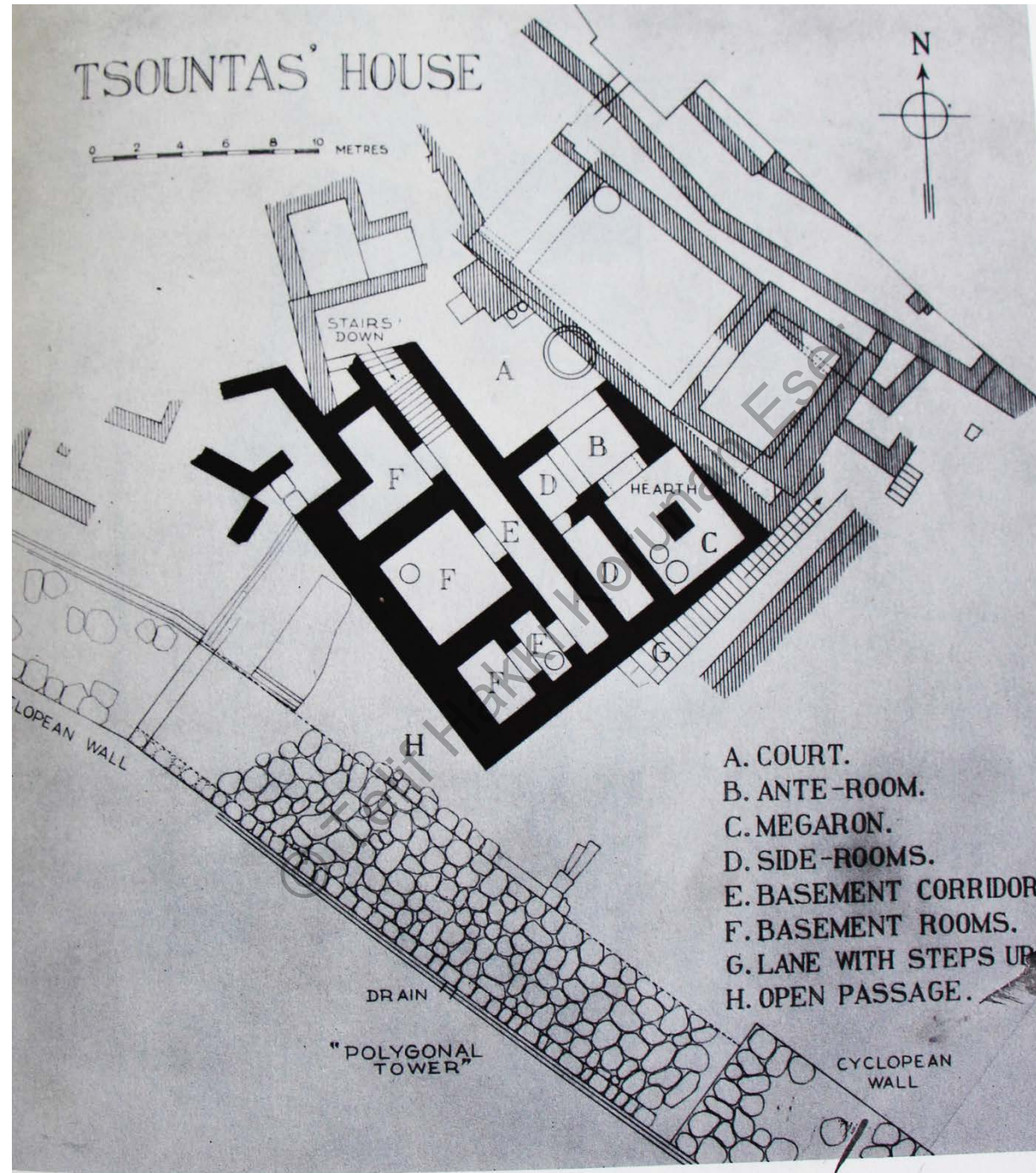
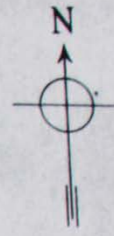


Kıta Yunanistan'da Miken (Aka) Devleti Mikenai (Mycenae) Kenti 2

Doç. Dr. Derya Yılmaz
Geç Tunç Çağı'nda Batı Anadolu Arkeolojisi

TSOUNTAS' HOUSE

0 2 4 6 8 10 METRES

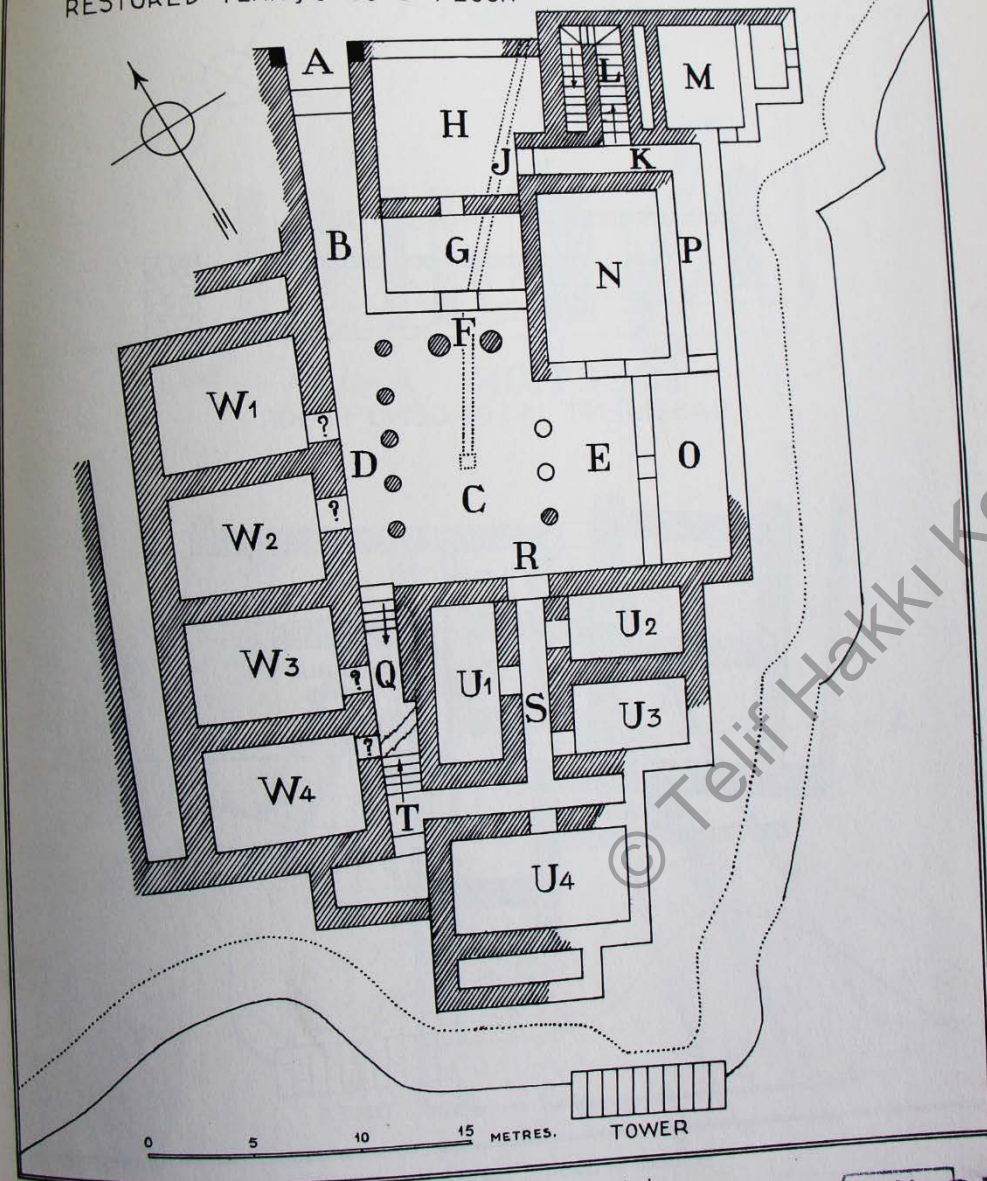


25. Tsountas' House, plan



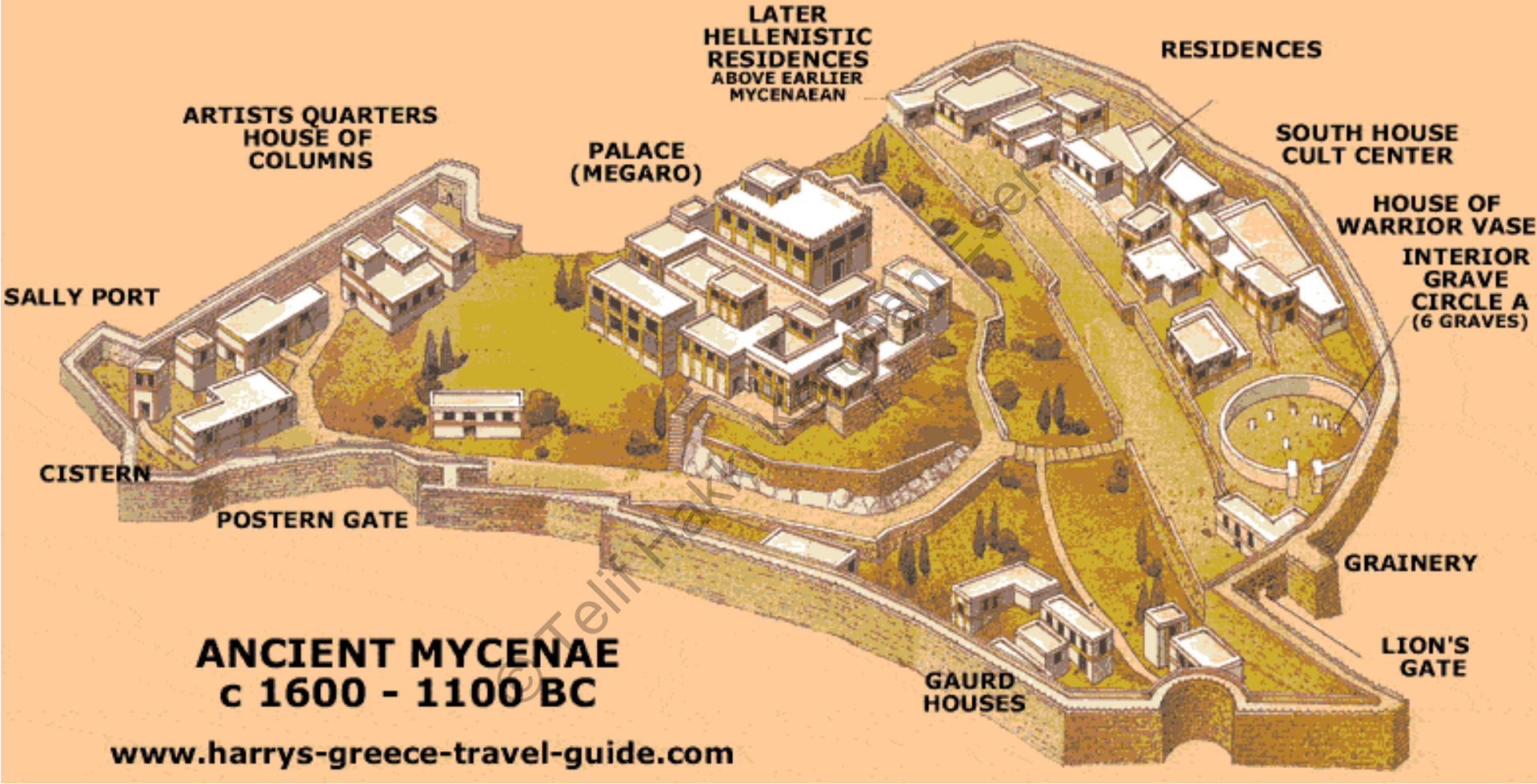


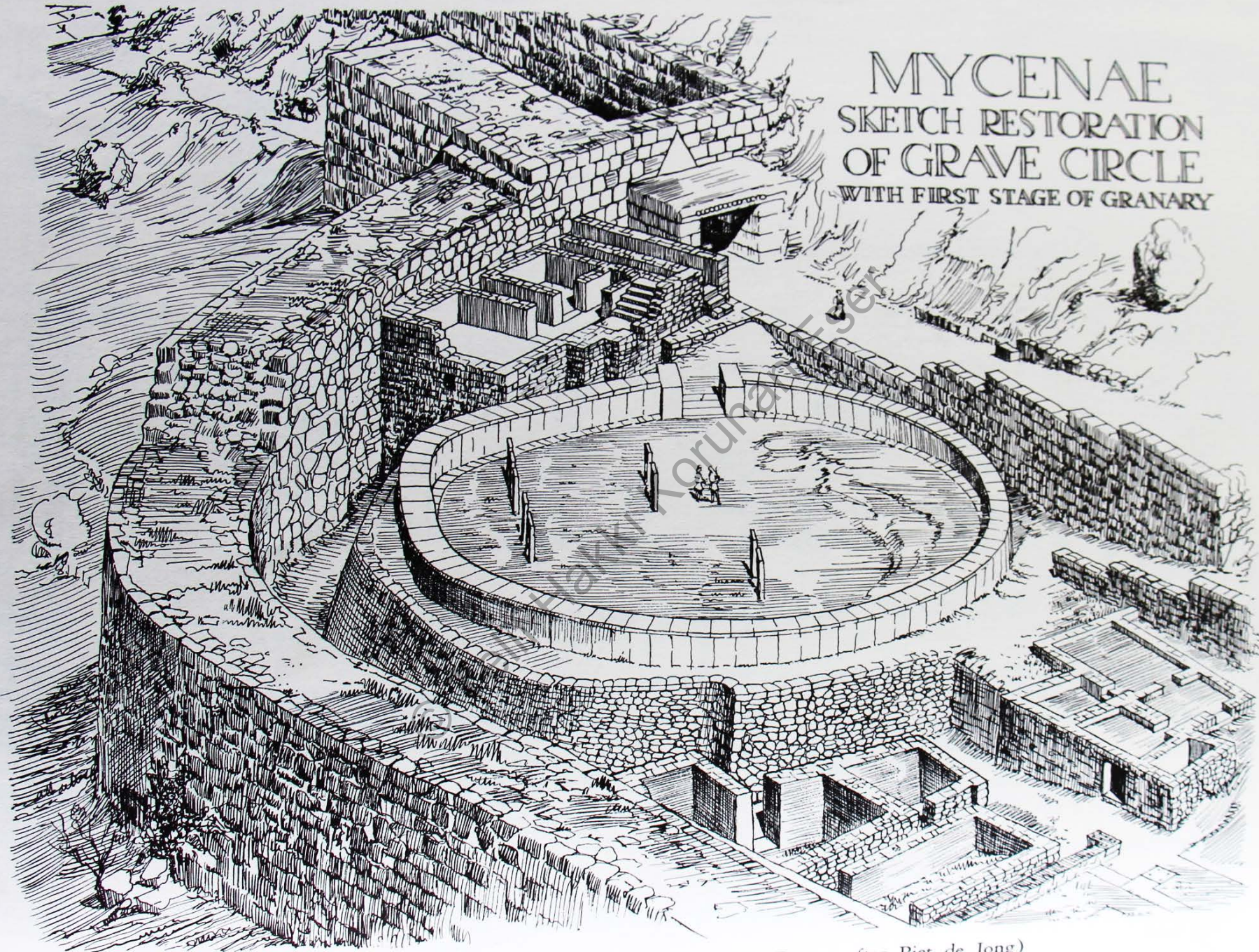
MYCENAE : HOUSE OF COLUMNS
RESTORED PLAN, GROUND FLOOR



33. HOUSE OF COLUMNS, restored plan

D.T.C.F.
KUTUPHAN





MYCENAE
SKETCH RESTORATION
OF GRAVE CIRCLE
WITH FIRST STAGE OF GRANARY

22. GRAVE CIRCLE, sketch restoration (by George Dexter after Piet de Jong)

M.Ö. 1600'de inşa edilen 27.5 m çapındaki taş duvar ile çevrili hükümdarlara ait ihtişamlı 6 adet kuyu mezar bulunmuştur. Kuyu şeklinde derin kazılmış, taş duvarlı dikdörtgen planlı mezarların üzeri kalasla örtülmüş, içlerinde yakılmamış cesetler, altın, gümüş, tunç, fildişi, kemik gibi pek çok eser mezar hediyesi olarak bırakılmıştır.

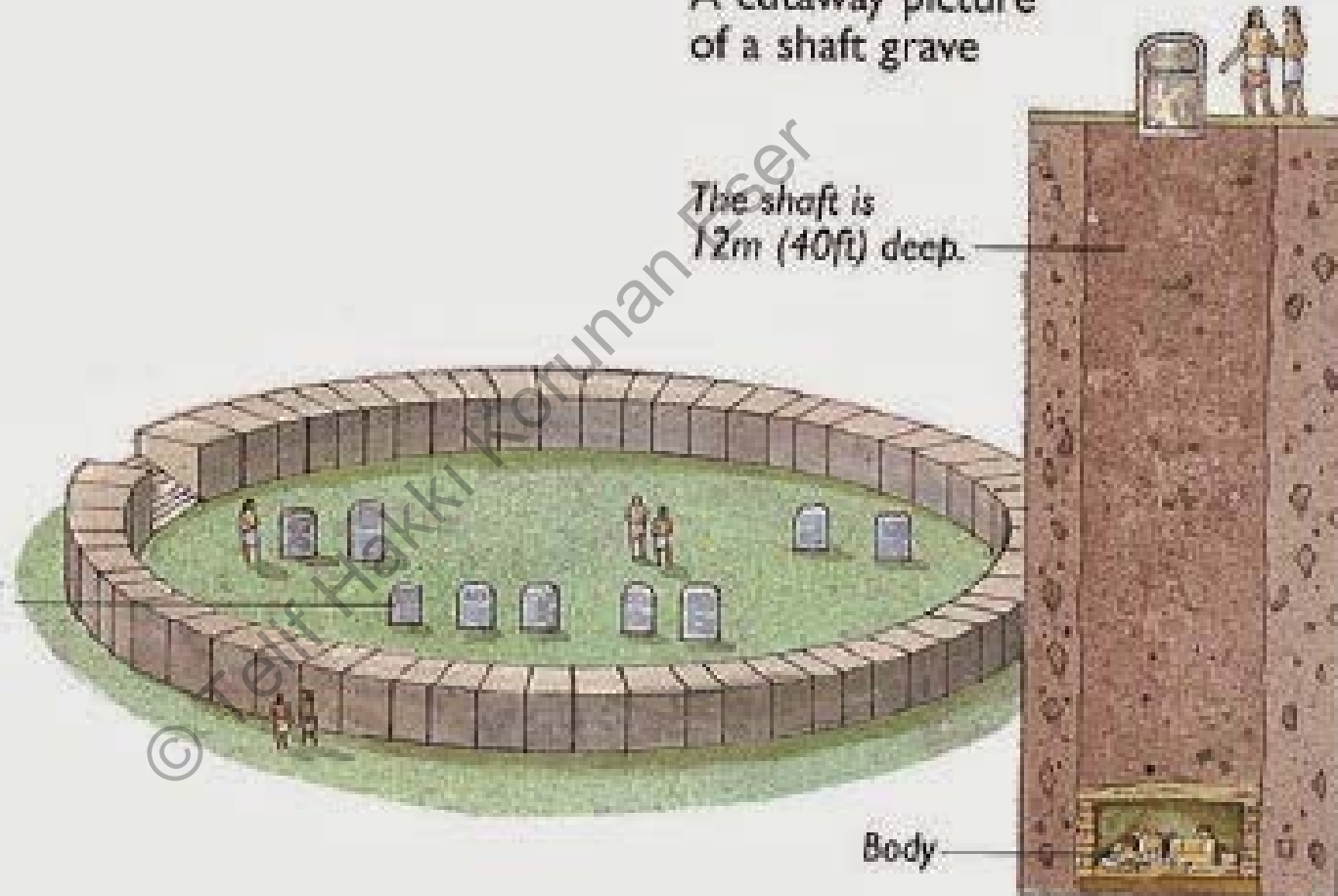


A cutaway picture
of a shaft grave

The shaft is
12m (40ft) deep.

A circle of graves
at Mycenae

Each grave is marked
by a stone slab.



Body

M.Ö. 1600'de inşa edilen 27.5 m çapındaki taş duvar ile çevrili hükümdarlara ait ihtişamlı 6 adet kuyu mezar bulunmuştur. Kuyu şeklinde derin kazılmış, taş duvarlı dikdörtgen planlı mezarların üzeri kalasla örtülmüş, içlerinde yakılmamış cesetler, altın, gümüş, tunç, fildişi, kemik gibi pek çok eser mezar hediyesi olarak bırakılmıştır.



Mezar Çemberi A daki kuyu mezarların üzerinde yer alan taş steller, av sahnesi ve spiral motiflerle süslenmiş.



stele i, scale 1:13



stele iv, scale 1:20



stele ii, scale 1:13



stele v, scale about 1:15





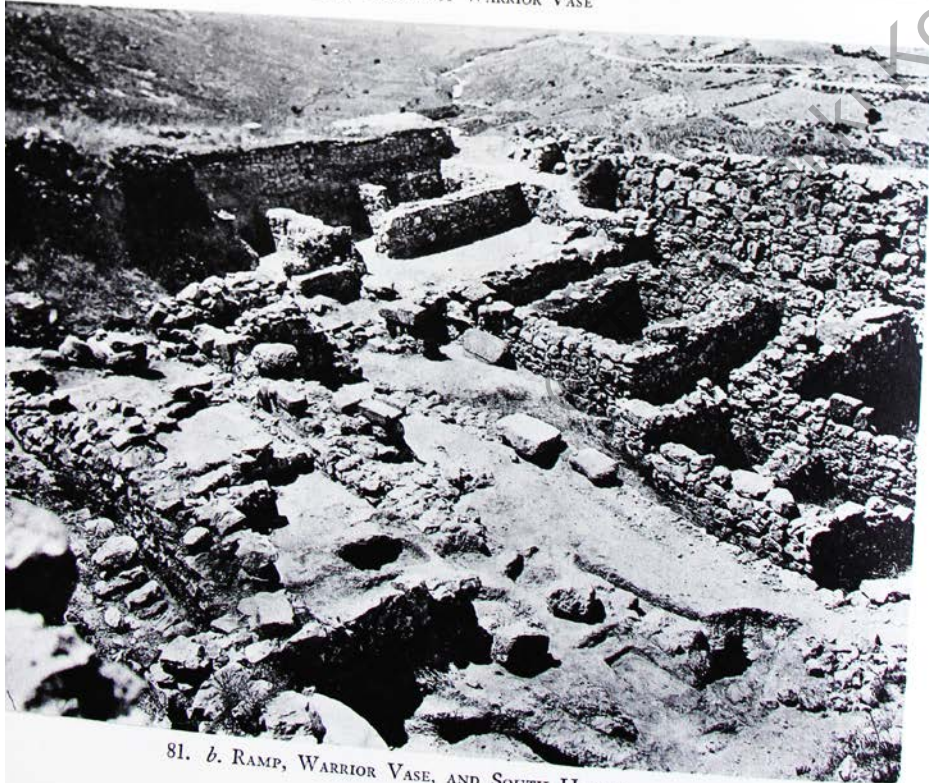


Gold elliptical funeral diadems, leaves, wheels, cups, earrings, pendants and pins from shaft grave III, "Grave of the Women", Grave Circle A, Mycenae. 1600-1500 BC. National Archaeological Museum, Athens.

Savaşçılar Vazosu Evi, Rampalı Ev, Güney Evi



81. a. HOUSE OF WARRIOR VASE



81. b. RAMP, WARRIOR VASE, AND SOUTH HOUSES



MYCENAE KALKANI CEMETERY

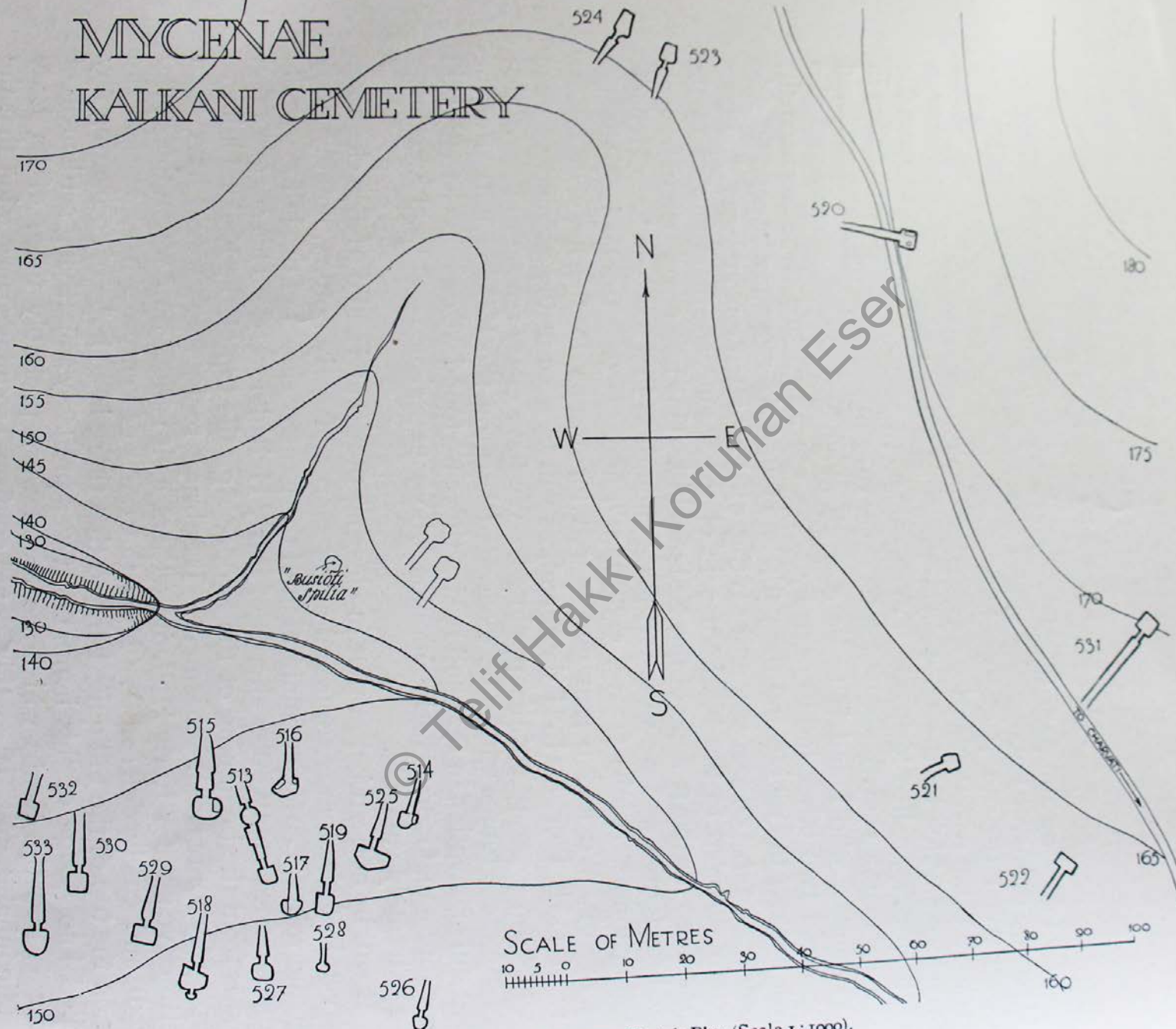
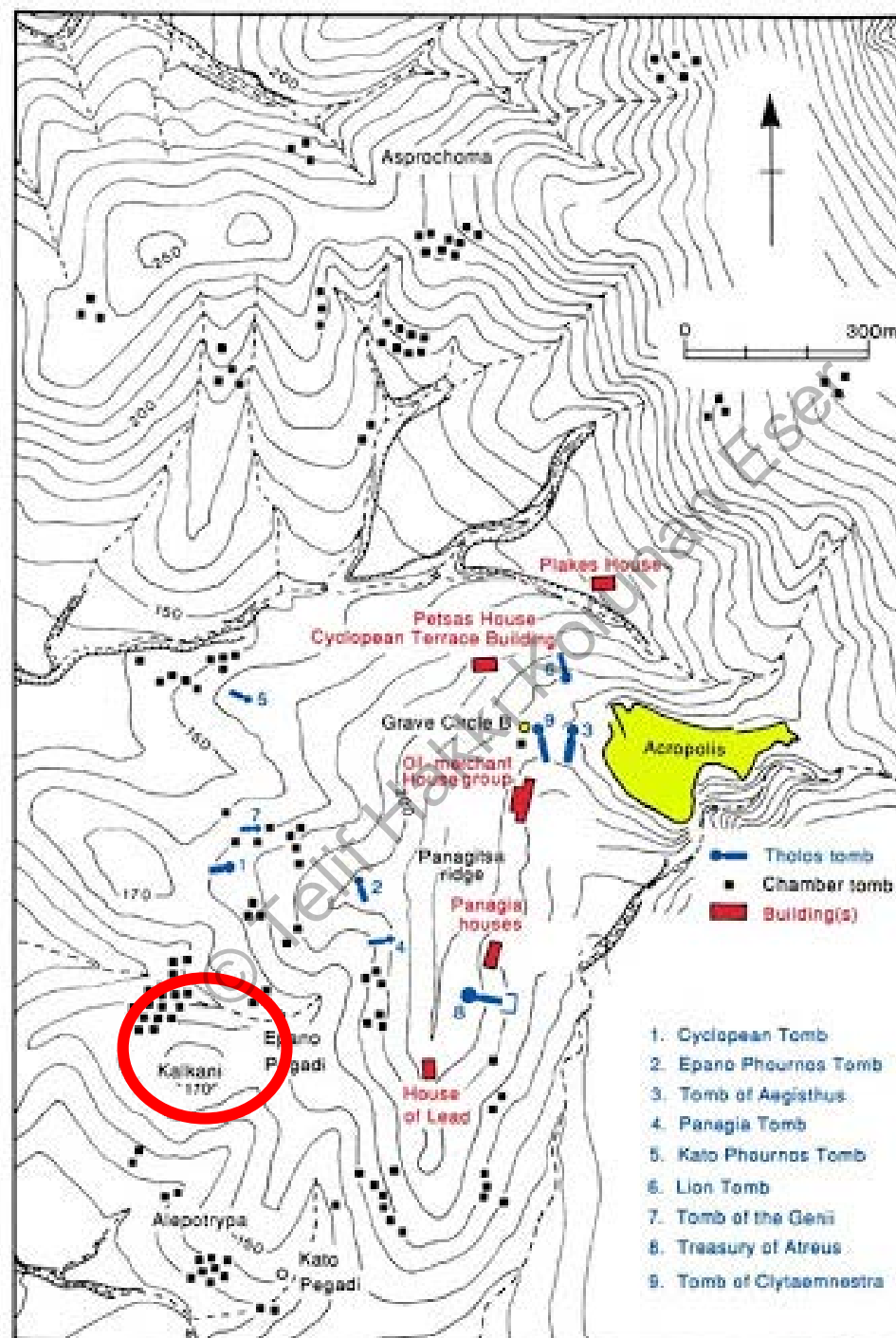


Fig. 9. Kalkani Cemetery, Sketch Plan (Scale 1 : 1000).





I

VASES: Tomb 518, no. 1, L.H.I; no. 2, L.H.II

(scale 2 : 3)

Published by the Society of Antiquaries of London, 1932



2



1



10



32

VASES: Tomb 517, no. 10, L.H.I; Tomb 518, nos. 32, 40, L.H.II; Tomb 529, no. 1, L.H.I

(scale 3 : 4)

Published by the Society of Antiquaries of London, 1932



3I



2

VASES: TOMB 518, NO. 3I, L. H. I; TOMB 529, NO. 2, L. H. II
(scale 2 : 3)

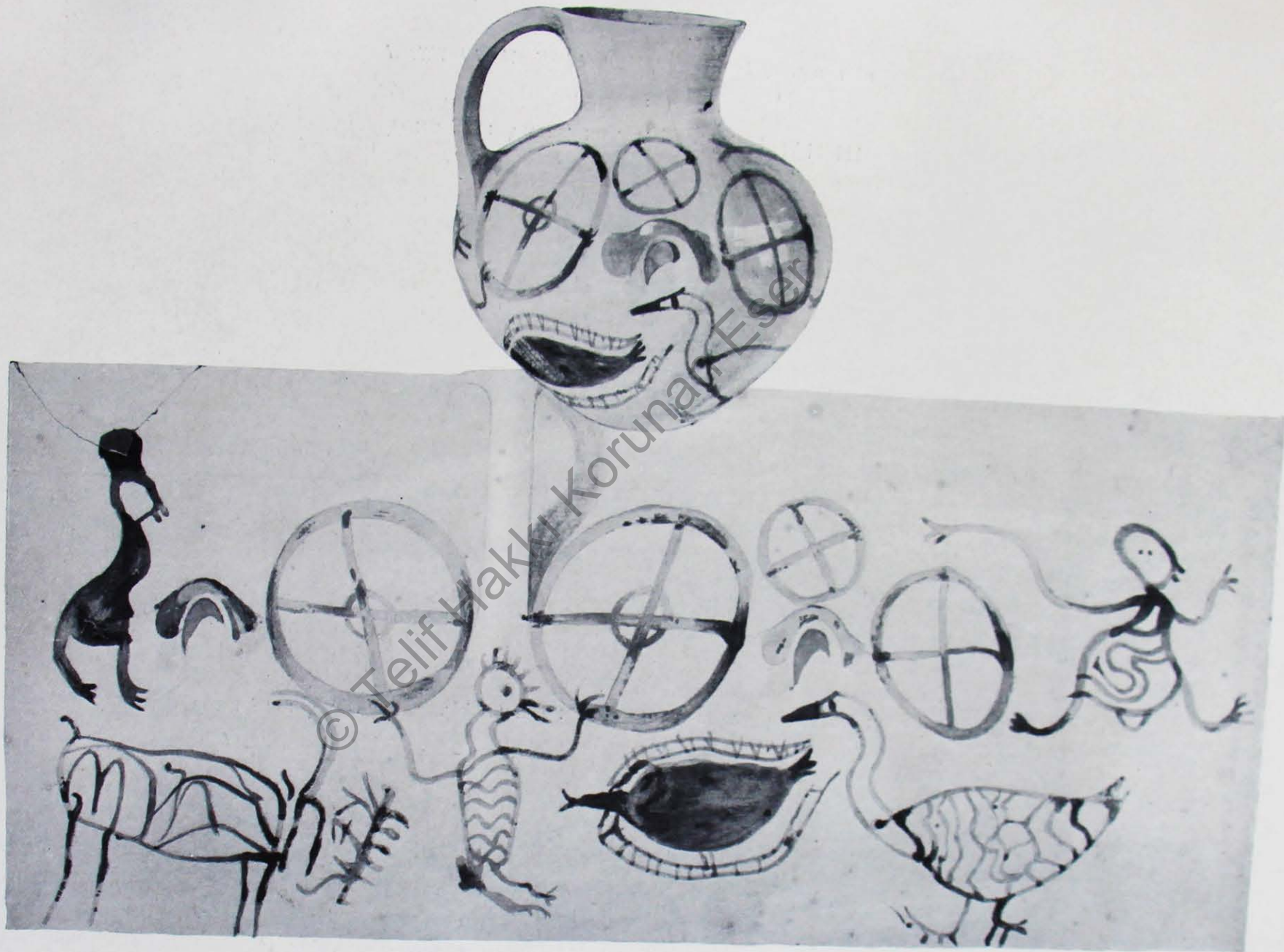


15



7

VASES : Tomb 518, no. 15; Tomb 529, no. 7; L. H. II
(scale 1 : 2)

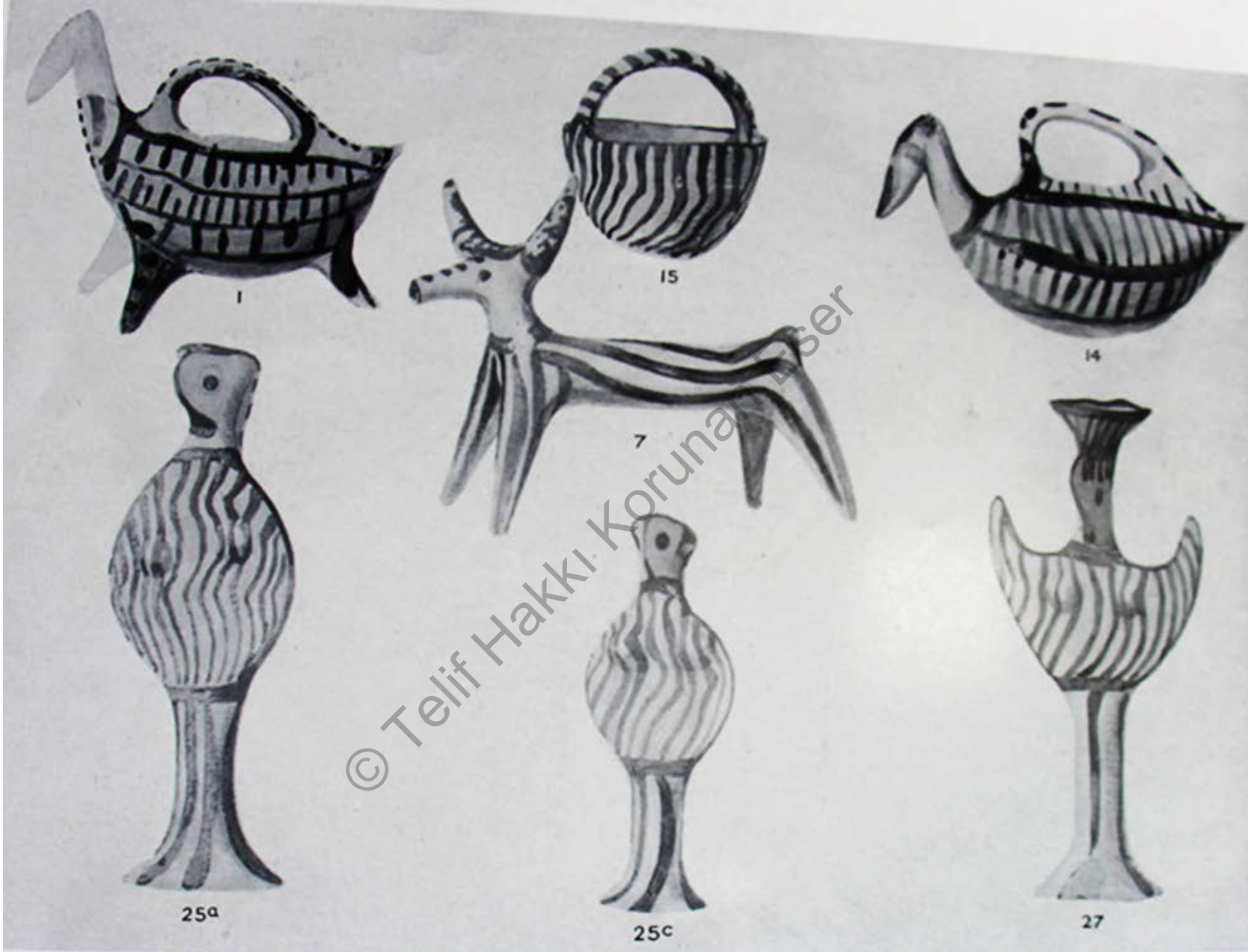


TOMB 521: VASE, NO. 5; WITH FLAT DRAWING OF DESIGN; L. H. III
(scale 2 : 3)



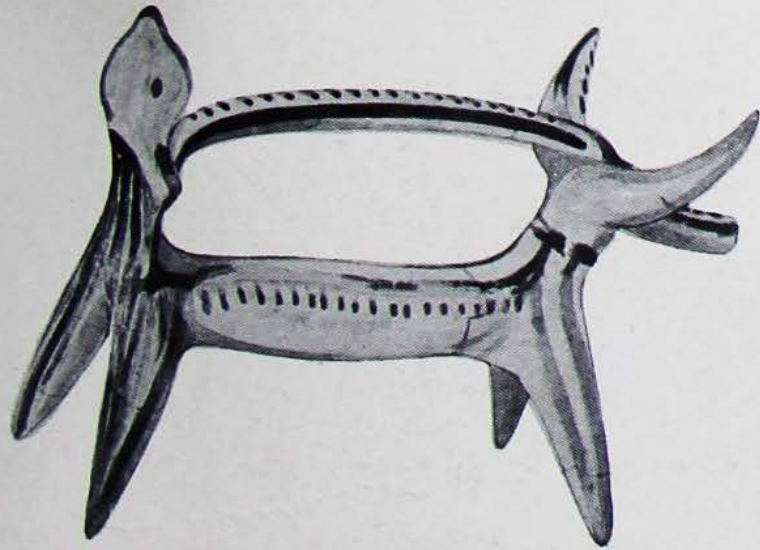
I.D.C.F.
 Kgl. Museen

BRONZES: TOMB 518, NOS. 49-51; TOMB 529, NOS. 25-28; MYCENAE, ACROPOLIS; L. H. II
 (scale 2 : 3)



TOMB 524: VASES, NOS. 1, 14, 15; AND TERRA-COTTA FIGURINES, NOS. 25a, 25c, 27; L. H. III
TOMB 527: TERRA-COTTA FIGURINE, NO. 7; L. H. III

(scale 2 : 3)



3



a



4

TOMB 513: TERRA-COTTA FIGURINES, NOS. 3, 4; L. H. III
TERRA-COTTA FIGURINE IN THE COLLECTION OF PROFESSOR A. B. COOK, *a*; L. H. III
(scale 1 : 2)



BEADS: TOMB 518, NOS. 67, 68, STONE; NO. 71, GLASS *a-c*, FAIENCE *d-f*, L. H. I-II;
 TOMB 529, NO. 36, STONE, L. H. I
 (scale 3 : 4)

A.D.C.F.
 Mittheilungen



SCARABS: TOMB 526, NOS. 1-3; AND BEADS: TOMB 526, NO. 4, STONE; NO. 5, AMBER;
 NO. 6, BRONZE; NO. 7, GLASS *a-d, f, i*, FAIENCE *e, g*; L. H. III
 (scale 1 : 1)

Steatit boğa başı biçimli rython

Mikenai

Knossos



© Telif Hakkı Korunan Eser



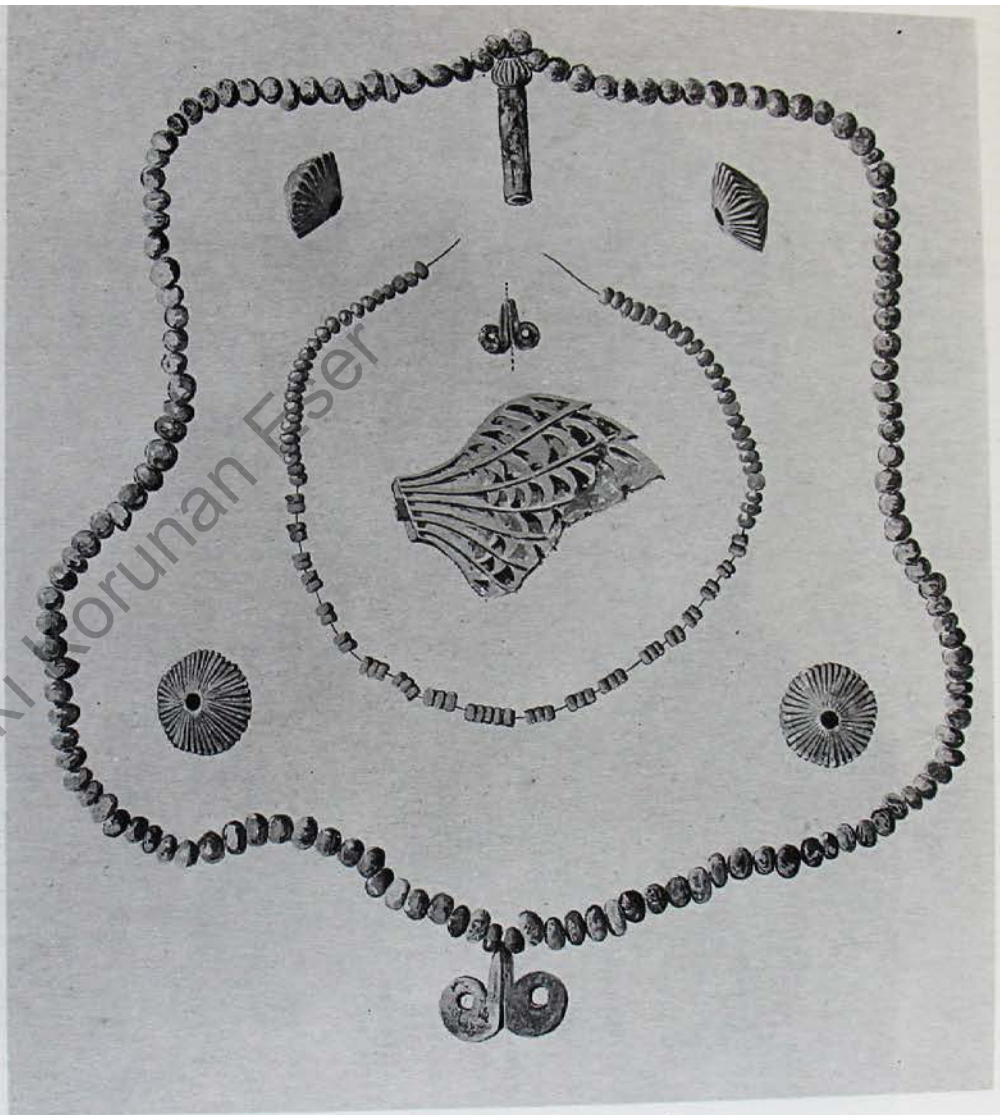
a. Mirror A, complete, scale 1:2



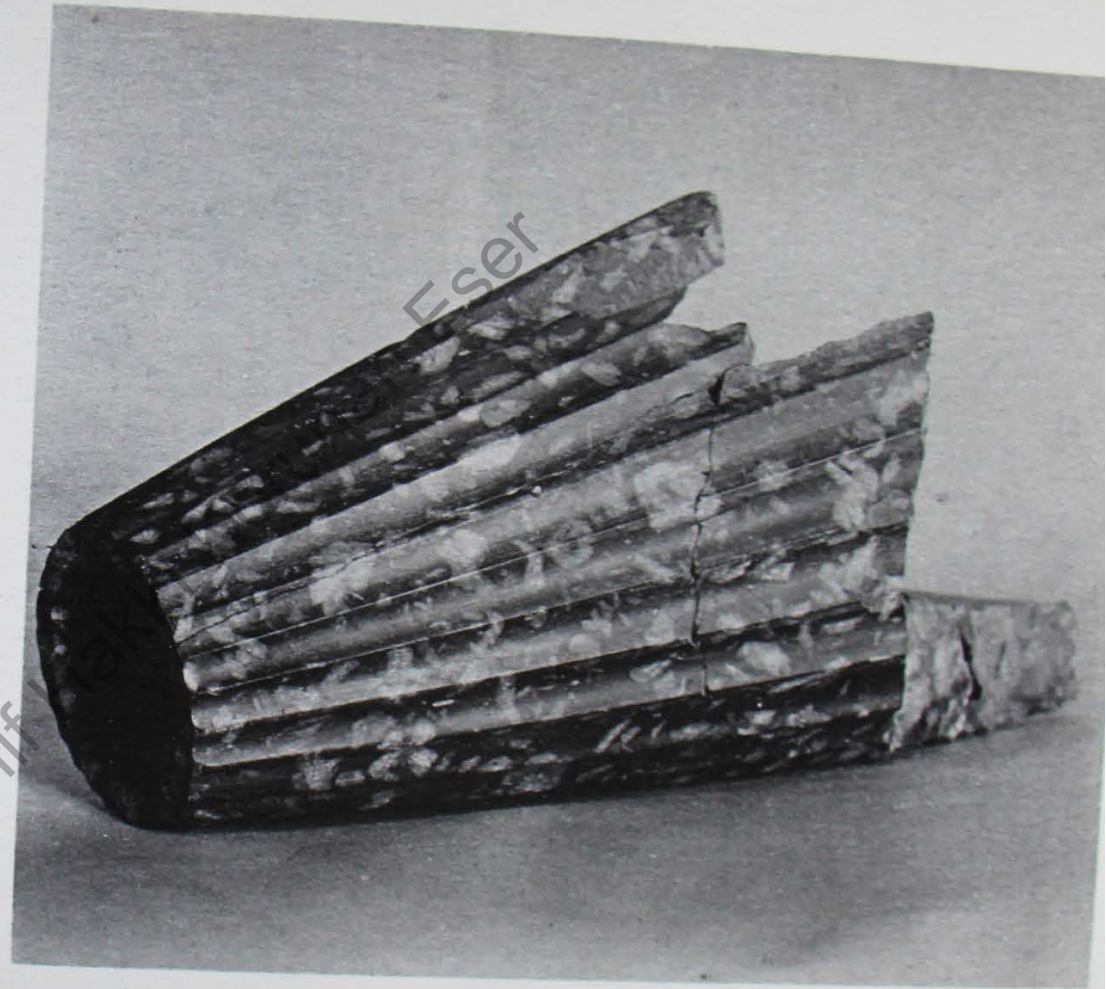
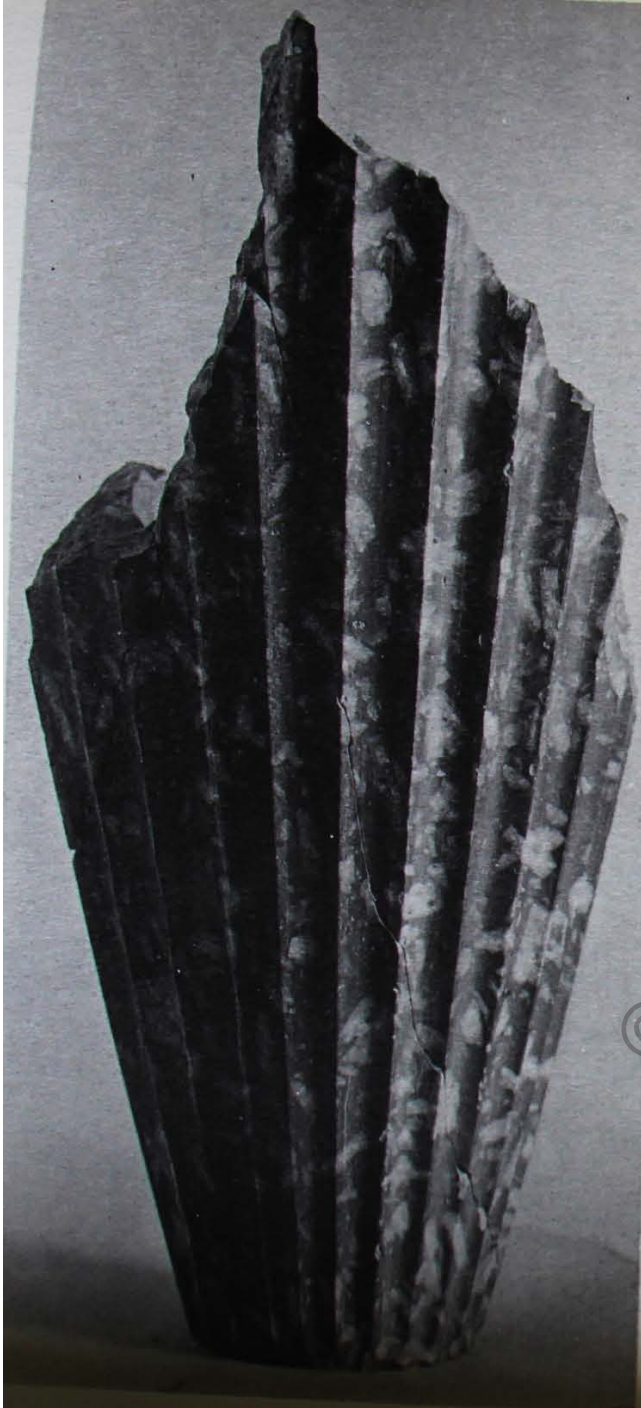
b. Mirror B, pieces, scale 1:2



a. Gold work, scale 2:3



b. Beads, ivory, wing, etc., scale 2:3



86. RHYTON WELL, rhyton of *lapis Lacedaemonius*, scale 3:4



78. *b.* KALKANI HILL, CHAMBER TOMB 518, boar's tusk helmet reconstructed, scale 3:10



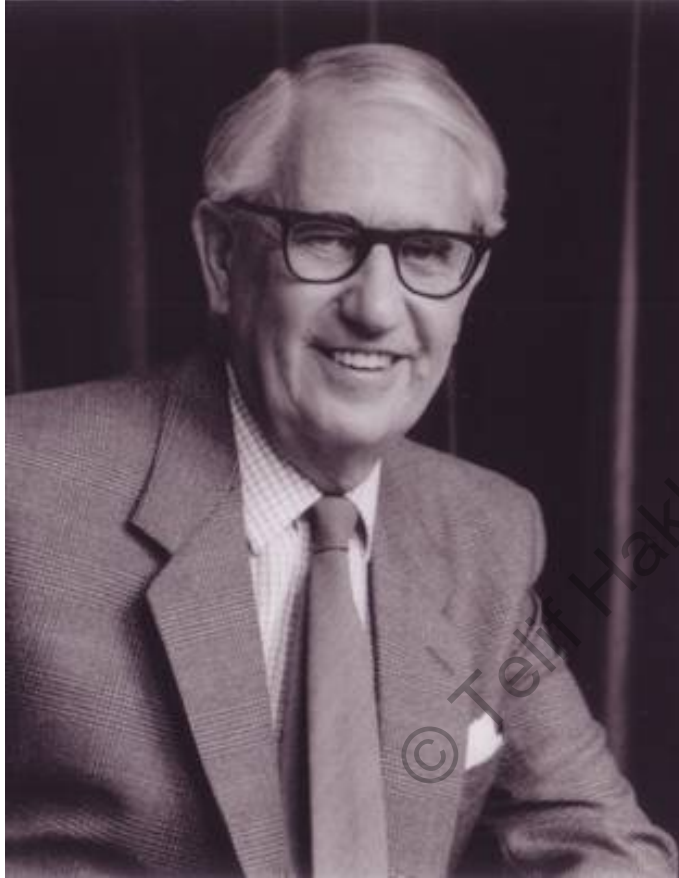
Linear B



Mikenlerin kullandıkları yazı Linear B olarak bilinir. Hint-Avrupa dil grubuna girer ve Yunanca'nın atası kabul edilirdi. Ancak yapılan son çalışmalarda Yunancadan farklı özelliklerin olduğu da anlaşılmıştır.



John Chadwick ve Micheal Ventris
(1951-1953 arası Linear B tabletlerinin çözümlenmesi)



John Chadwick 1920-1998



Michael Ventris (1922-1956)



	KEÇİ		DOMUZ		ÖKÜZ
	ERKEK KEÇİ		ERKEK DOMUZ		BOĞA
	DİŞİ KEÇİ		DİŞİ DOMUZ		İNEK

Linear B İdeogramlarından Birkaç Örnek

a	ᐱ	e	ᐱ	i	ᐱ	o	ᐱ	u	ᐱ
da	ᐱ	de	ᐱ	di	ᐱ	do	ᐱ	du	ᐱ
ja	ᐱ	je	ᐱ	—	—	jo	ᐱ	ju	—
ka	ᐱ	ke	ᐱ	ki	ᐱ	ko	ᐱ	ku	ᐱ
ma	ᐱ	me	ᐱ	mi	ᐱ	mo	ᐱ	mu?	ᐱ
na	ᐱ	ne	ᐱ	ni	ᐱ	no	ᐱ	nu	ᐱ
pa	ᐱ	pe	ᐱ	pi	ᐱ	po	ᐱ	pu	ᐱ
—	—	qe	ᐱ	qi	ᐱ	qo	ᐱ	—	—
ra	ᐱ	re	ᐱ	ri	ᐱ	ro	ᐱ	ru	ᐱ
sa	ᐱ	se	ᐱ	si	ᐱ	so	ᐱ	su	ᐱ
ta	ᐱ	te	ᐱ	ti	ᐱ	to	ᐱ	tu	ᐱ
wa	ᐱ	we	ᐱ	wi	ᐱ	wo	ᐱ	—	—
zu	ᐱ	ze	ᐱ	zi	ᐱ	zo	ᐱ	zu?	ᐱ

Kaynakça

- Mansel, Arif Müfid, 1937, **Ege Tarihinde Akalar meselesi**, İstanbul, Devlet Basımevi.
- Mansel, A.M., 1999, **Ege ve Yunan Tarihi**, Türk Tarih Kurumu, Ankara.
- Wace, A.J.B, 1932, **Chamber Tombs at Mycenae**, Archaeologia vol. LXXXII, Oxford.
- Wace, Alan J.B., 1949, **Mycenae an Archaeological History and Guide**, Princeton University Press, Princeton.
- <https://www.youtube.com/watch?v= ASYeEQbldQ> 3D Mycenea akropol canlandırması