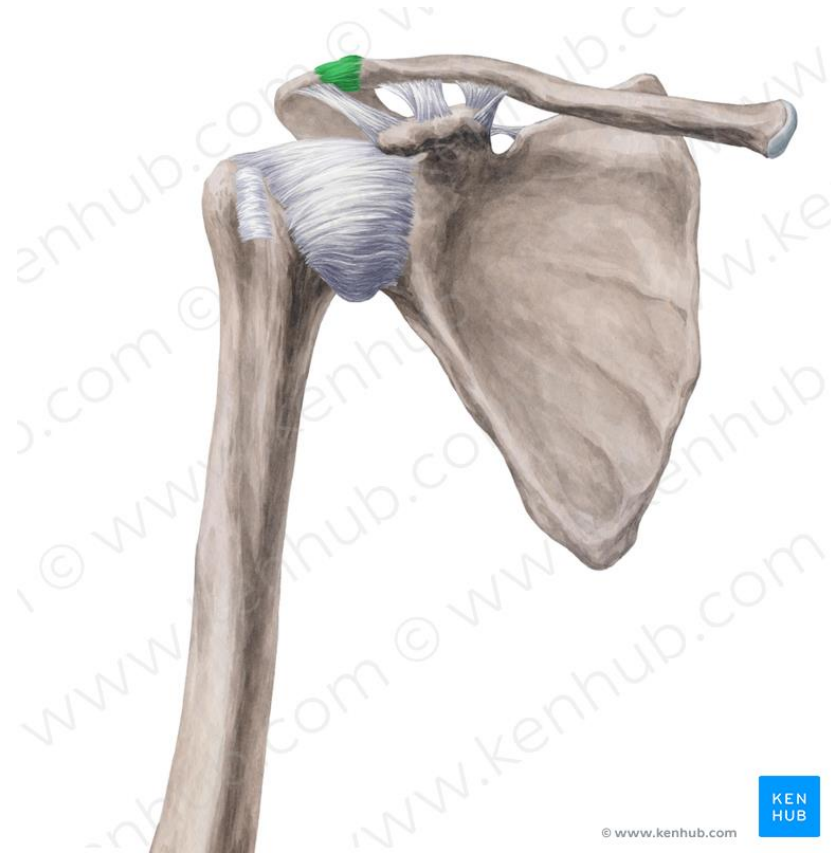


***Art. Plana: Eklem yüzleri düz, kayma hareketi(art. acromioclavicularis)**

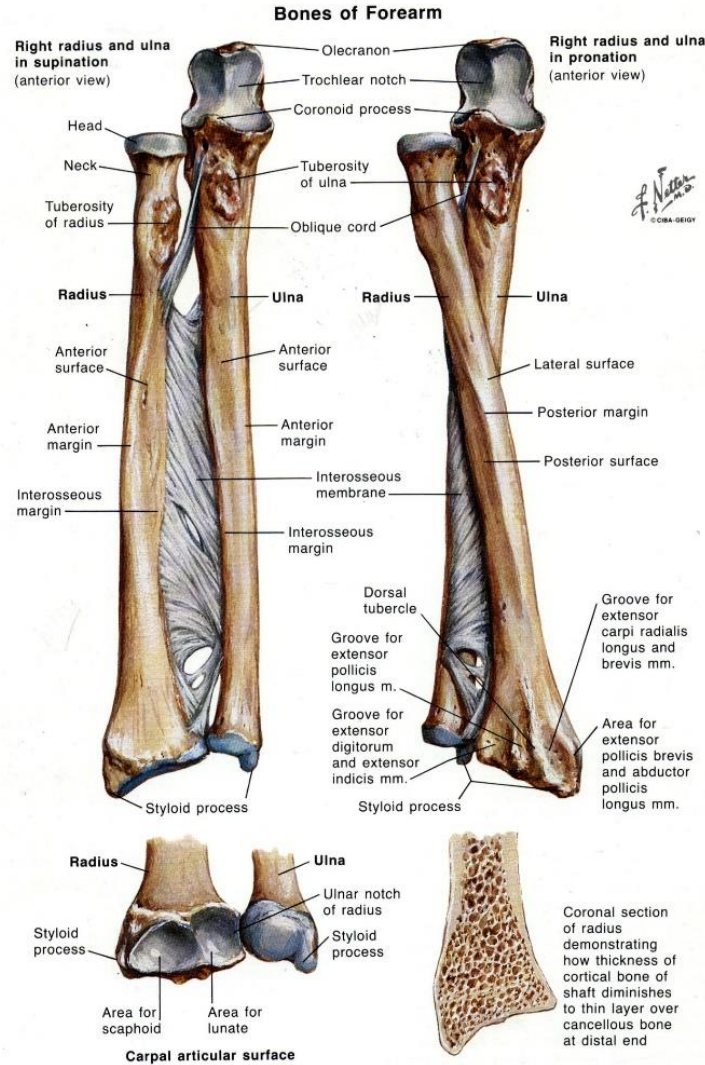


Tek Eksenliler

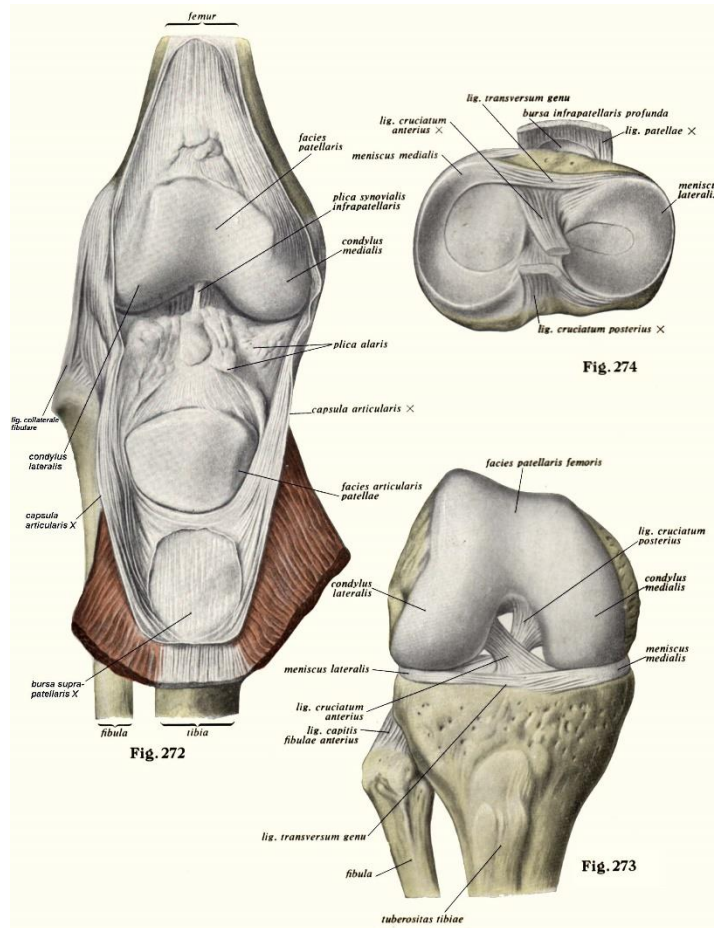
***Ginglymus-Trochlear**: konveks(makara)-konkav
(art. interphalangea)



***Trochoid-Pivot: silindir-halka (Ör/ Art. Radioulnaris proximalis)**



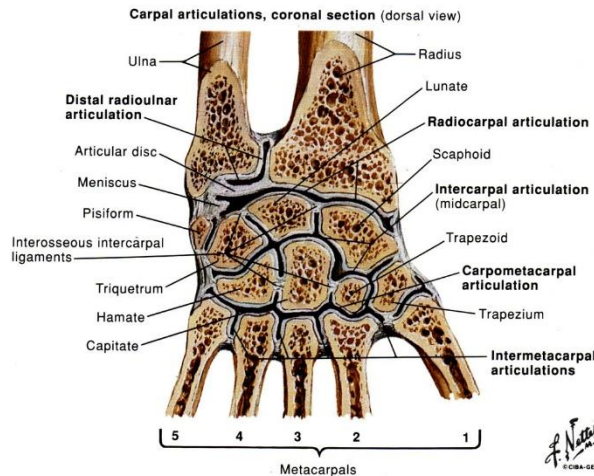
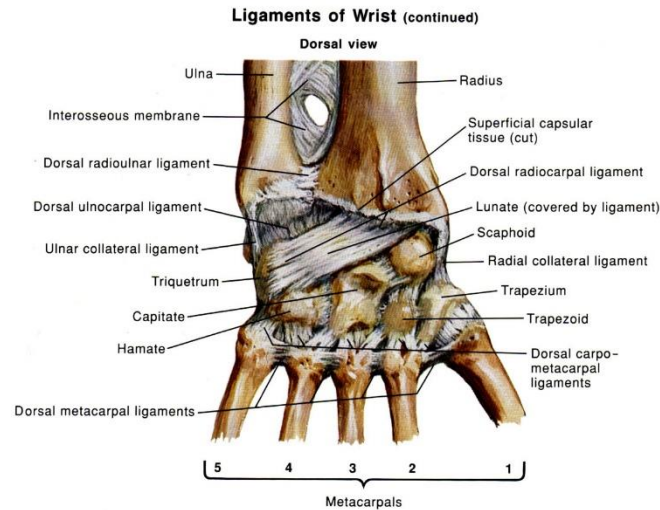
***Bicondylaris:** konveks eklem yüzü kondil şeklinde(art. genus)



Çift Eksenliler

***Condylloid-Elipsoid (Ör/ art. radiocarpalis)**

***Art. Sellaris (Ör/ Art. Carpometacarpalis pollicis)**



Çok Eksenli Eklem

*Art. Spheroidea (Ör/ art.humeri-art.coxae)

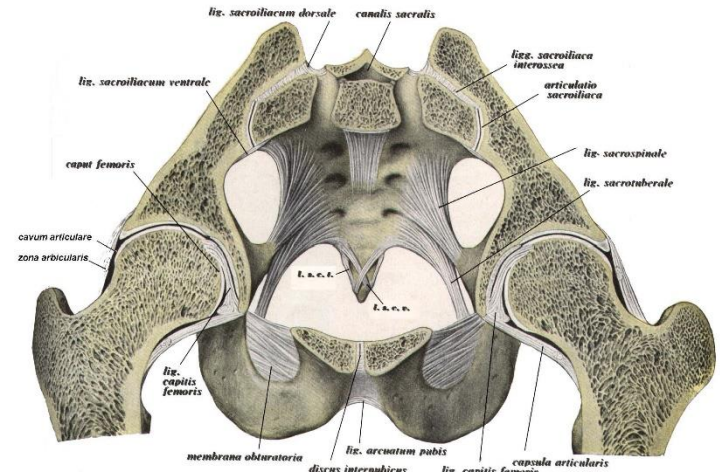
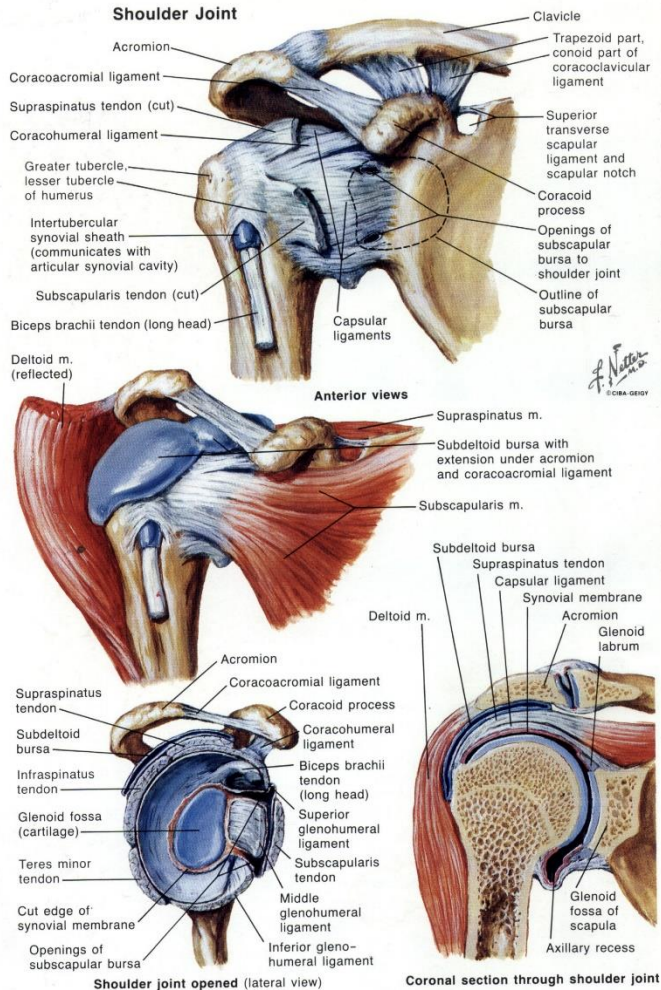


Fig. 268

l. s. c. l. = ligamentum sacrococcygium laterale
l. s. c. v. = ligamentum sacrococcygium ventrale

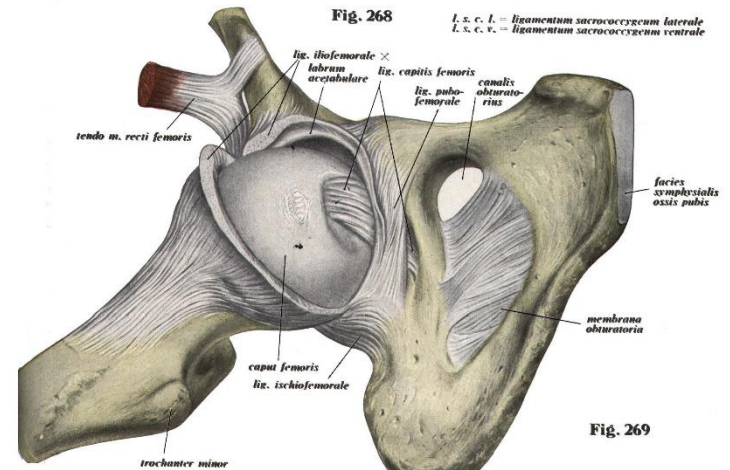


Fig. 269