

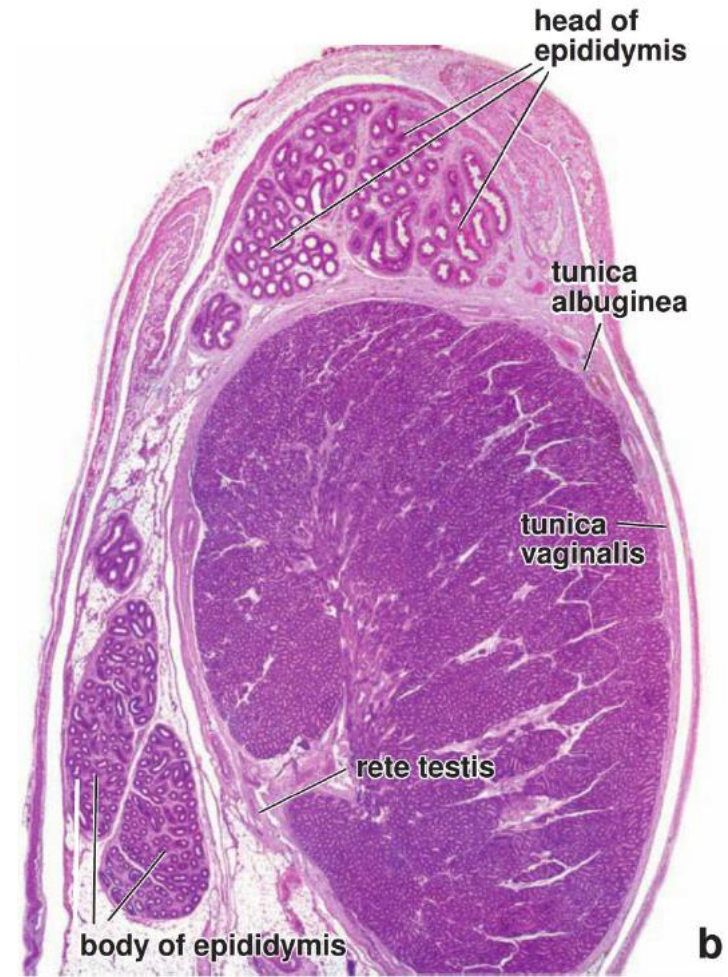
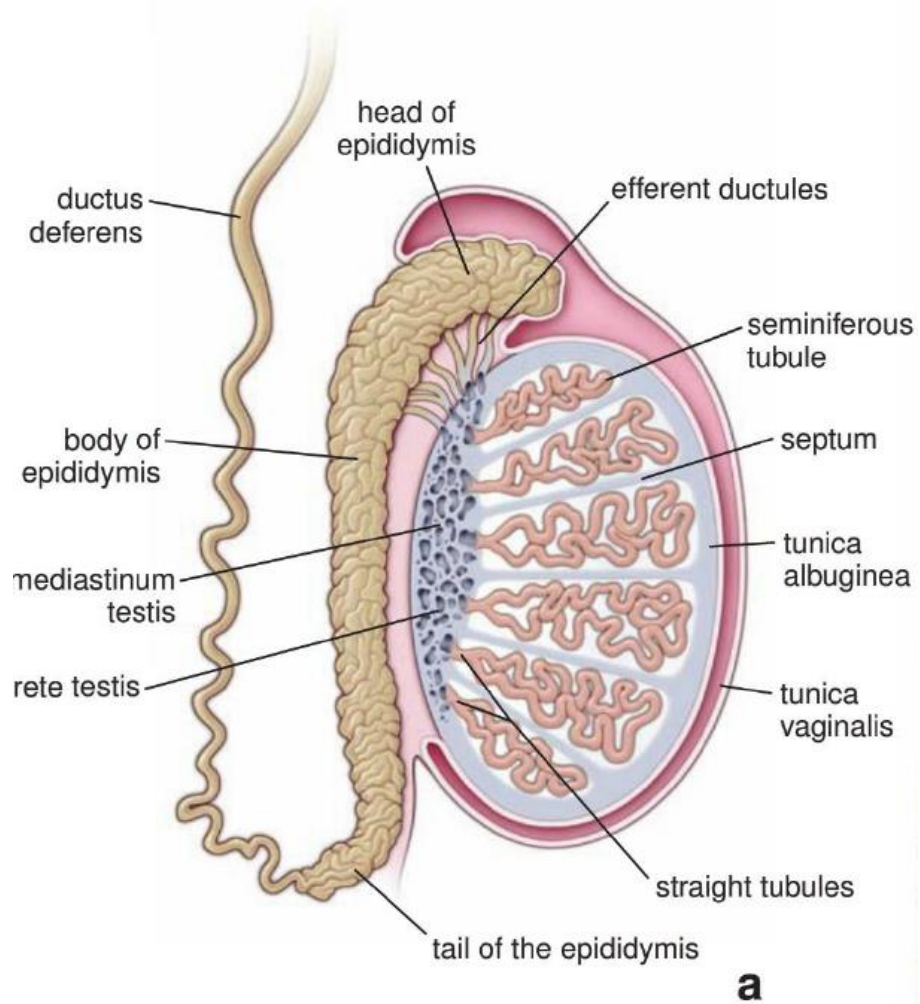
# Laboratory practice

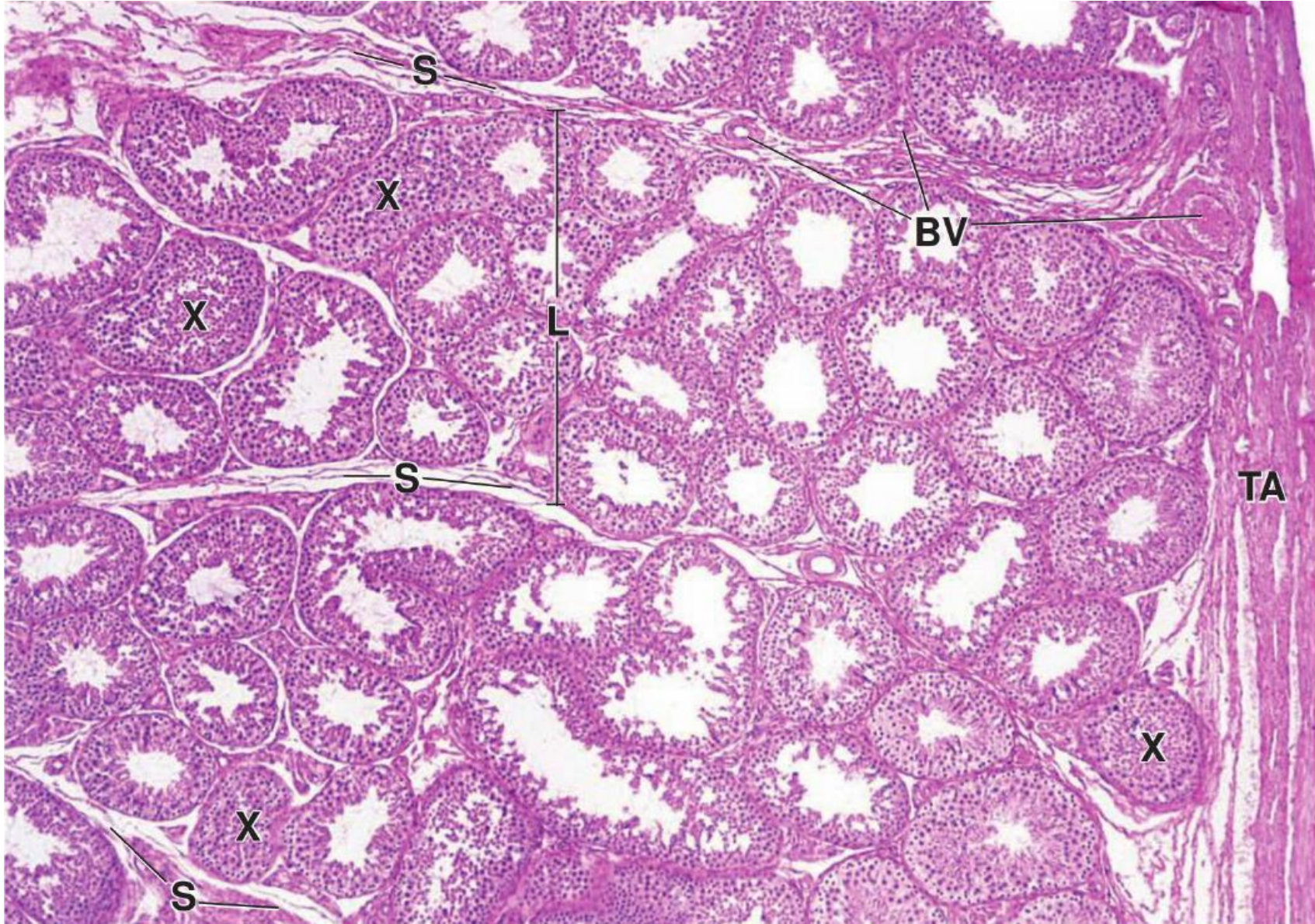
## Histology of the male reproductive system-1

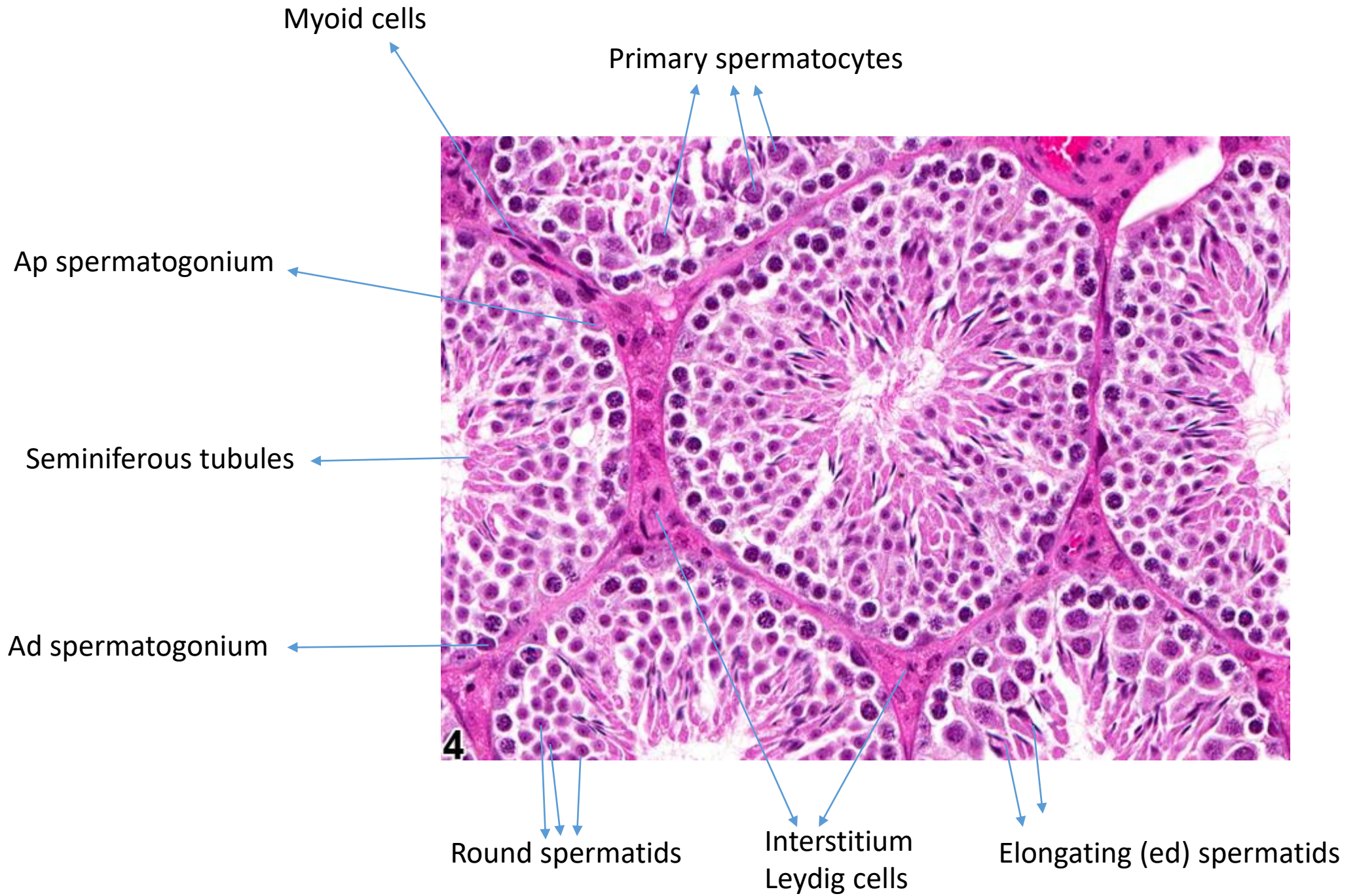
Testis ----- vas deference - spermatozoa

Dr. Sinan Özkavukcu  
Ankara University Faculty of Medicine  
Dept. of Histology – Embryology  
Lab Director - Center for Assisted Reproduction

# Testis



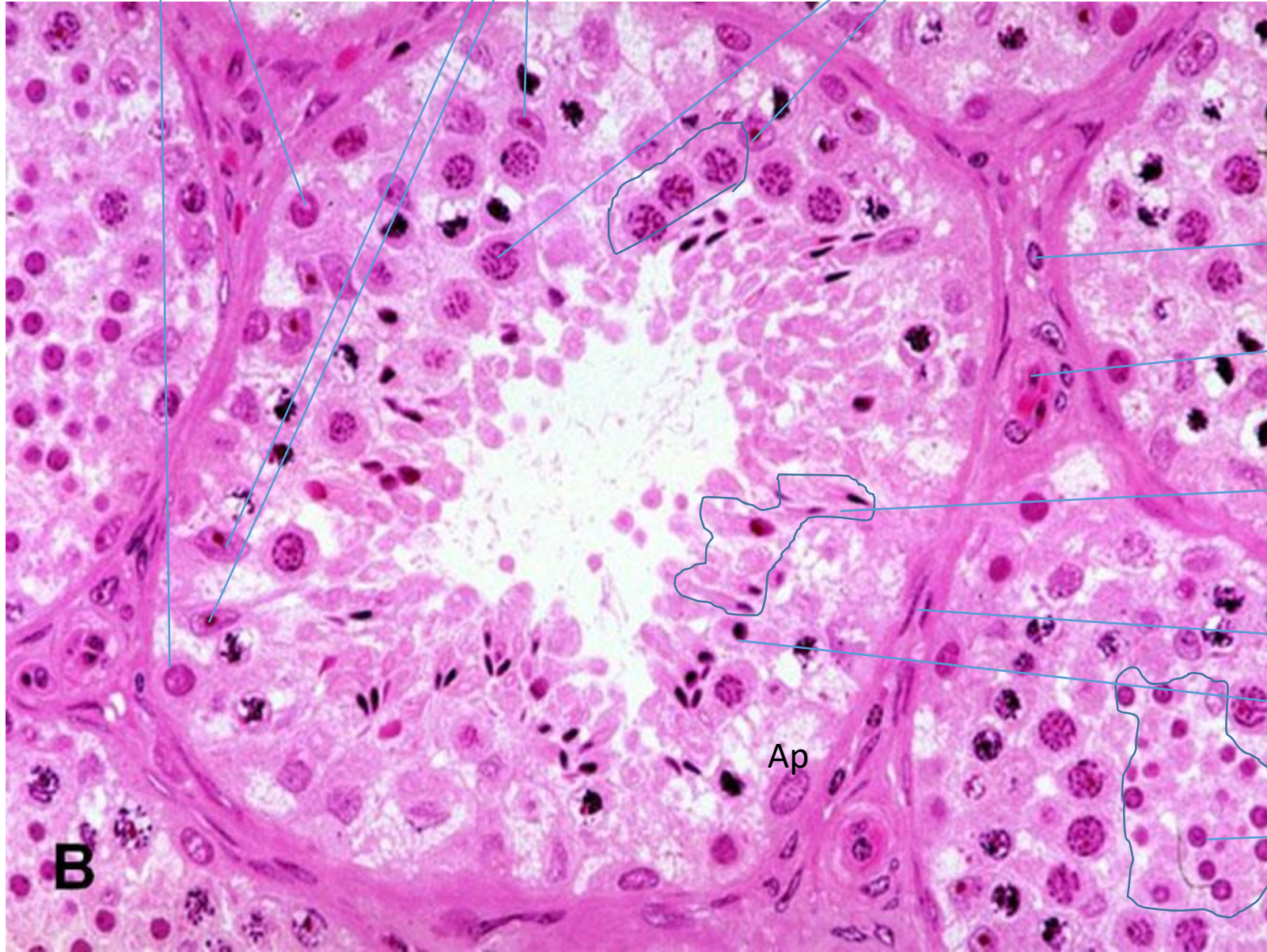




Type B spermatogonium

Sertoli cell nucleus

Primary spermatocytes



Leydig cells

Capillaries

Elongated spermatids (Sd1, Sd2)

Myoid cell nucleus

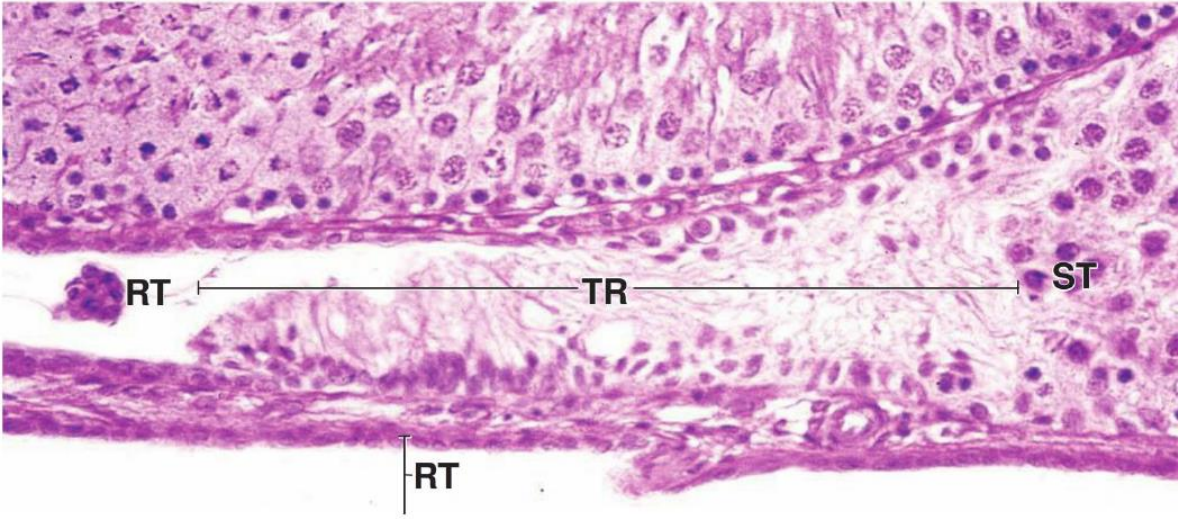
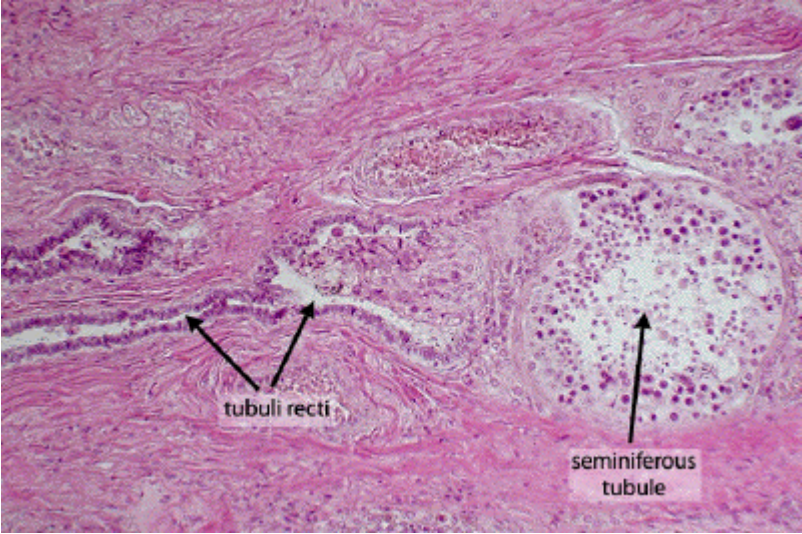
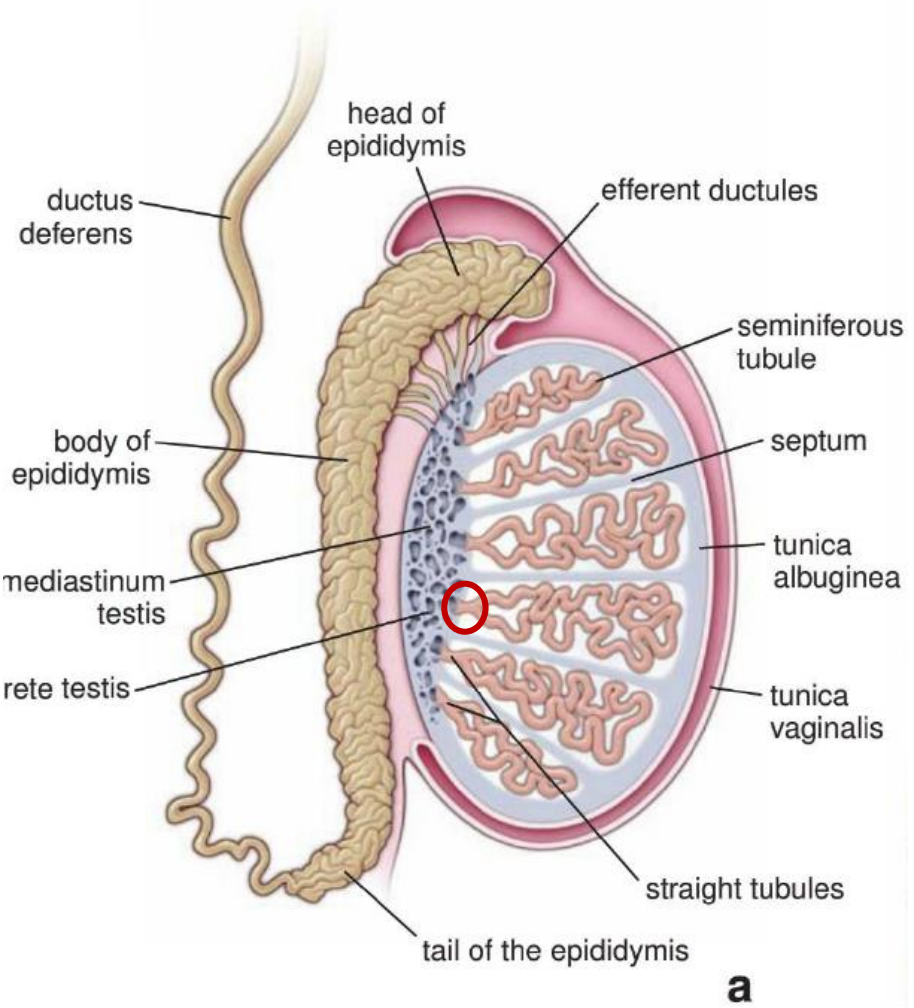
Sb1

Round spermatids

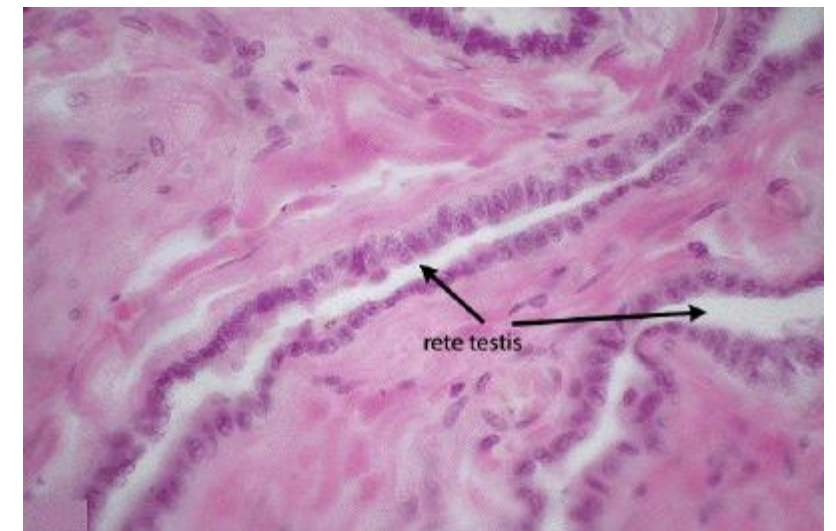
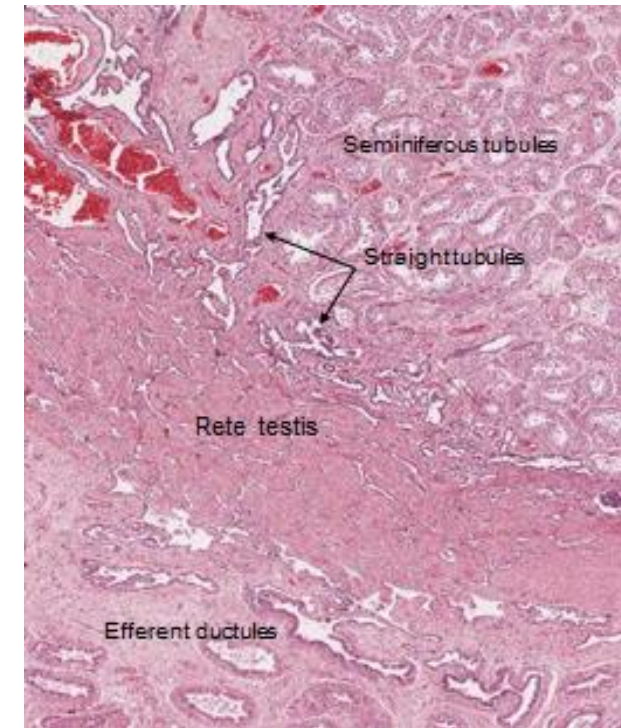
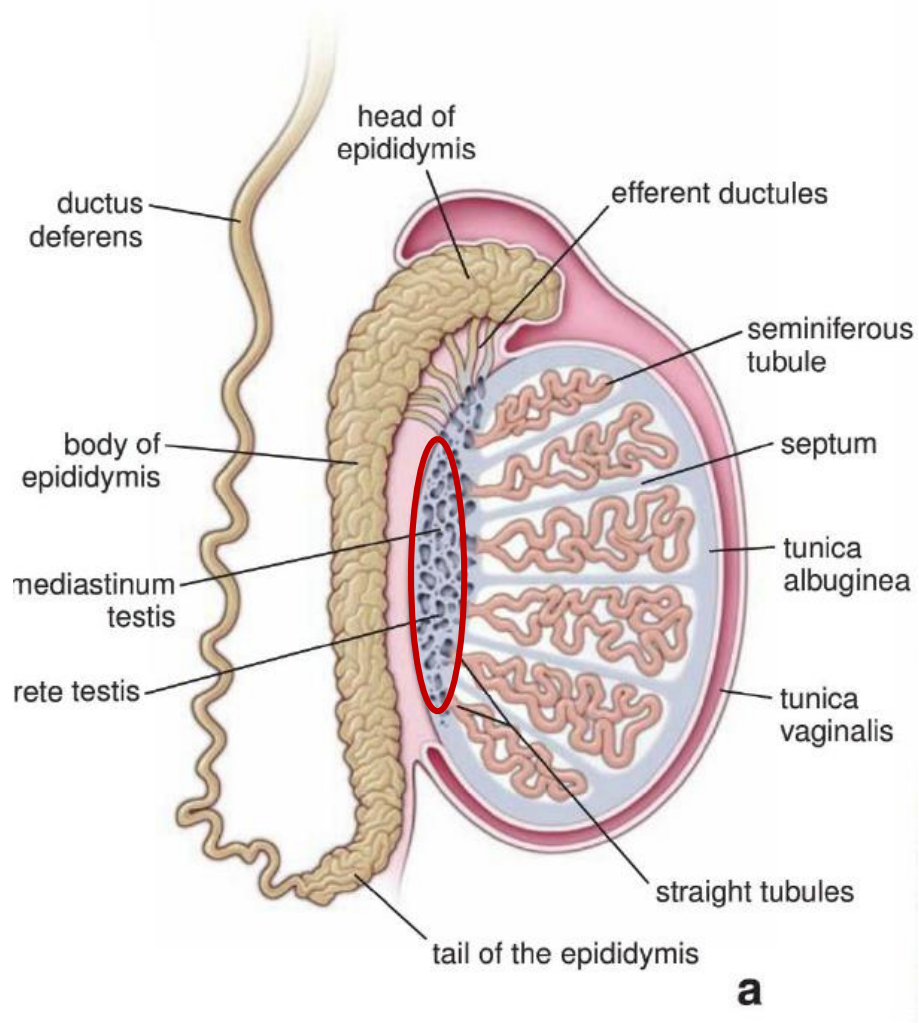
Ap

**B**

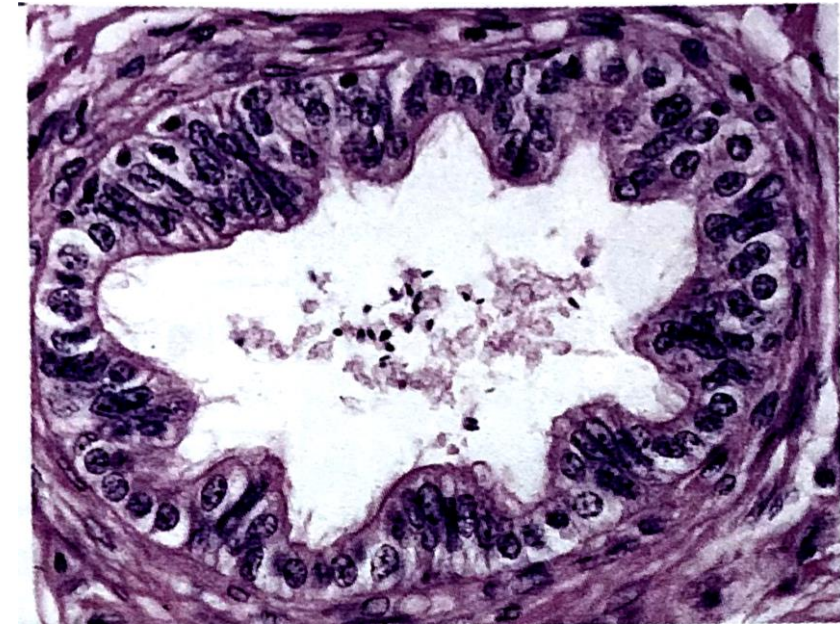
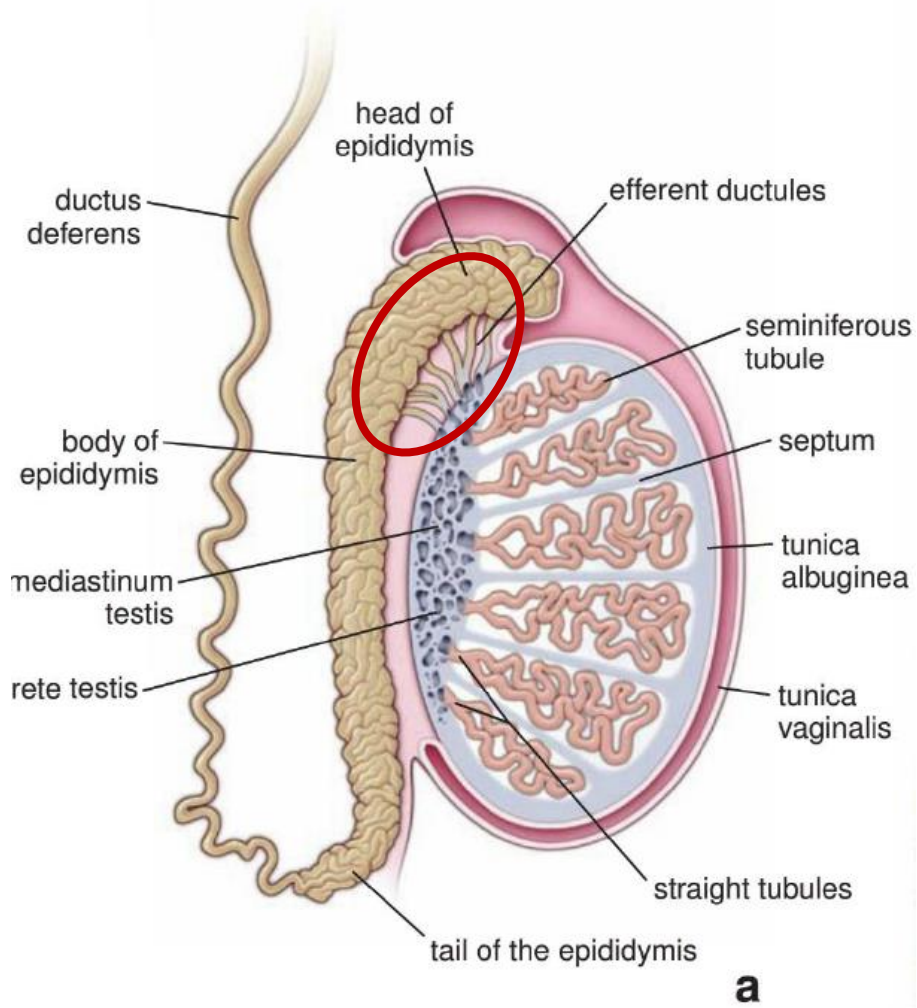
Tubuli recti lined only by Sertoli cells their lining changes to a simple cuboidal epithelium



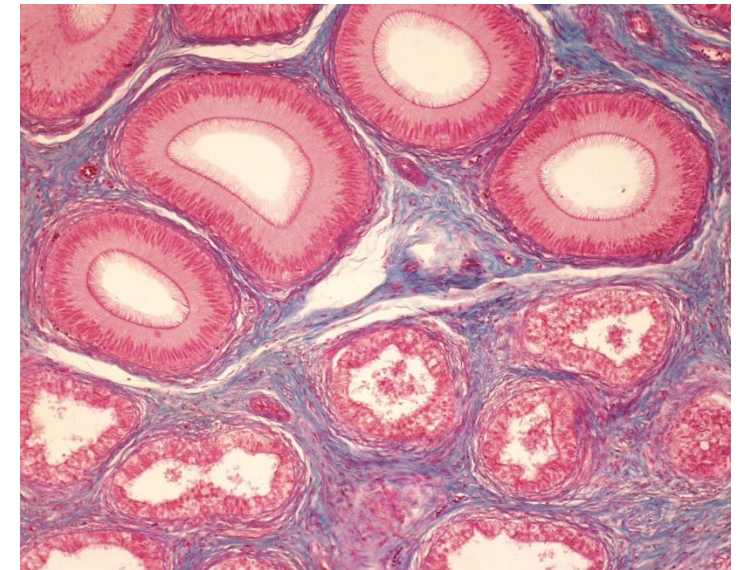
A simple cuboidal or low columnar epithelium lines the channels of the rete testis. These cells have a single apical cilium and relatively few short apical microvilli



The efferent ductules are lined with a pseudostratified columnar epithelium

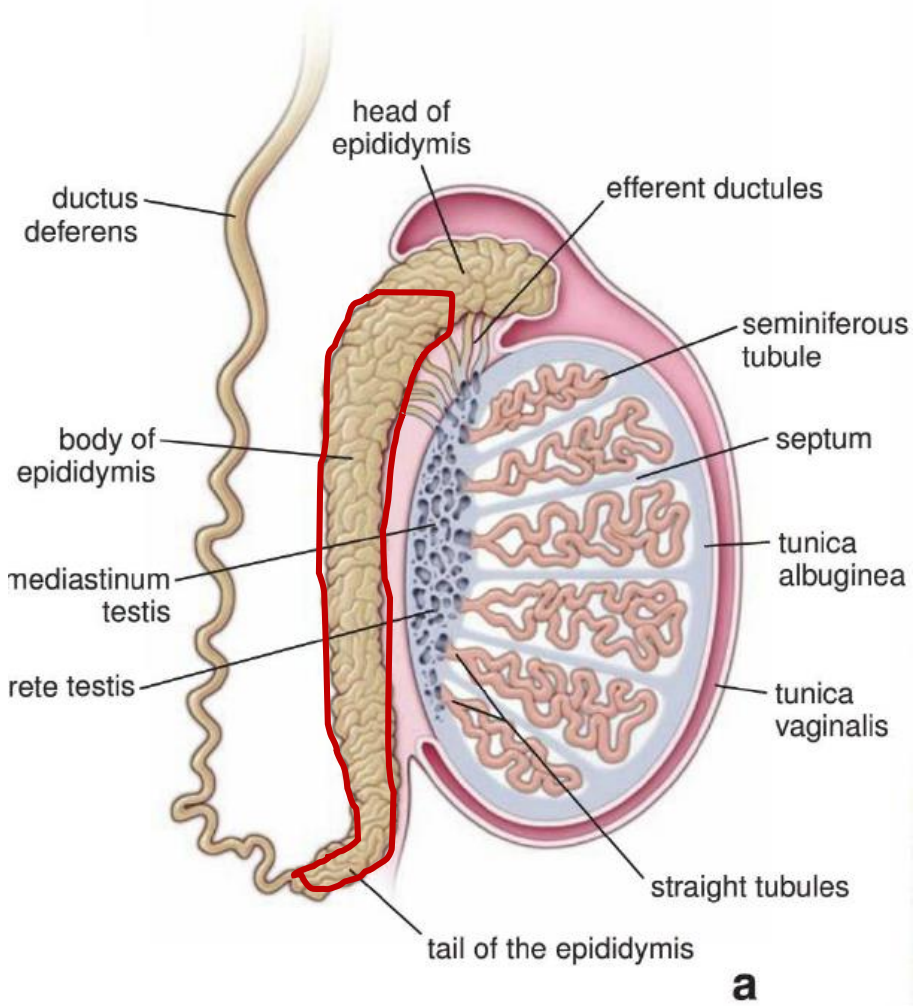


The tall columnar cells are ciliated. The short basal cells are nonciliated cells have numerous microvilli

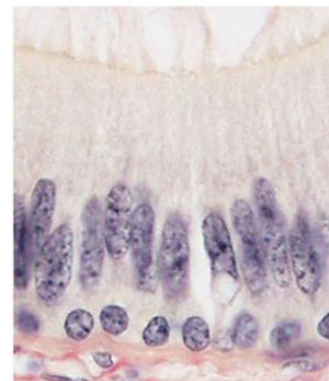
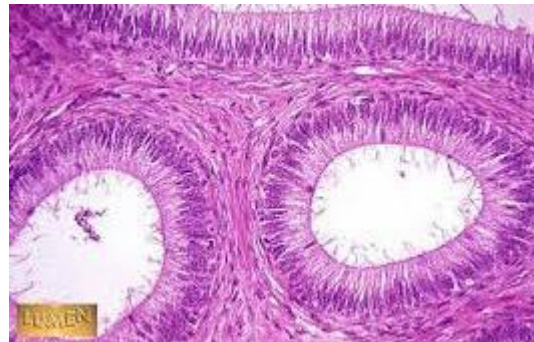




The duct of the epididymis is lined with a **pseudostratified columnar epithelium**



Principal cells that have numerous long, modified microvilli called **stereocilia** extend from the luminal surface and **basal cells**



The ductus deferens is lined with a pseudostratified columnar epithelium that closely resembles that of the epididymis . The tall columnar cells also have stereocilia that extend into the lumen. The rounded basal cells rest on the basal lamina

