

A Commercial Flower Company-Goldsmith Seed



Flower Seed Production in Western States



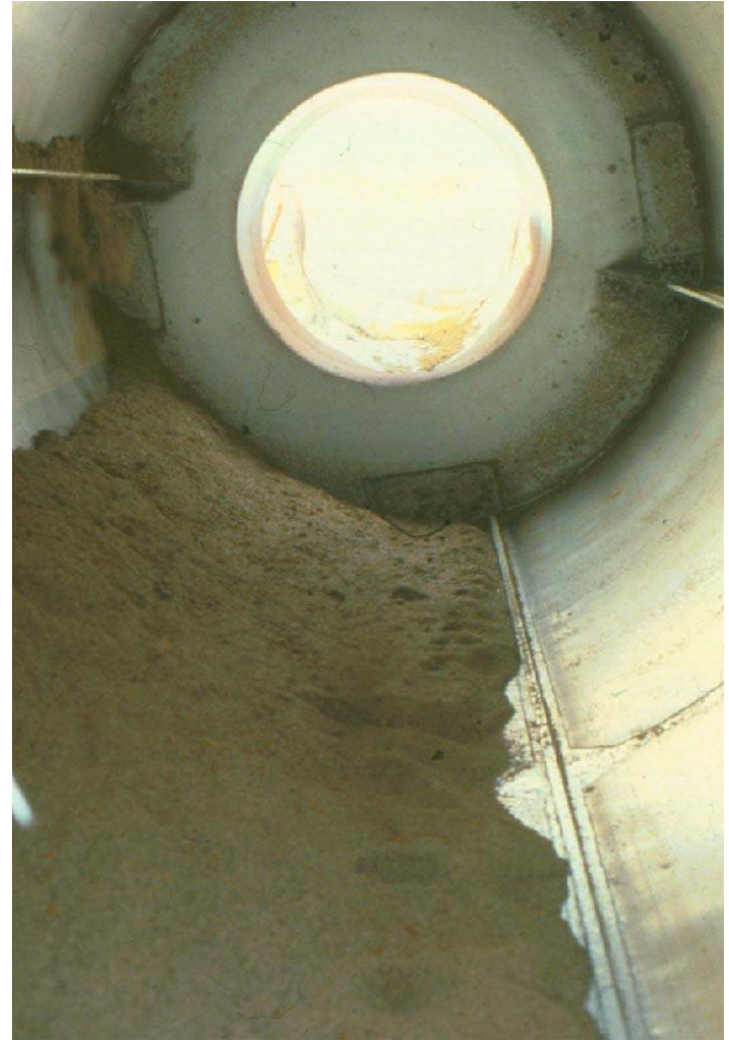
Field Drying of Seeds



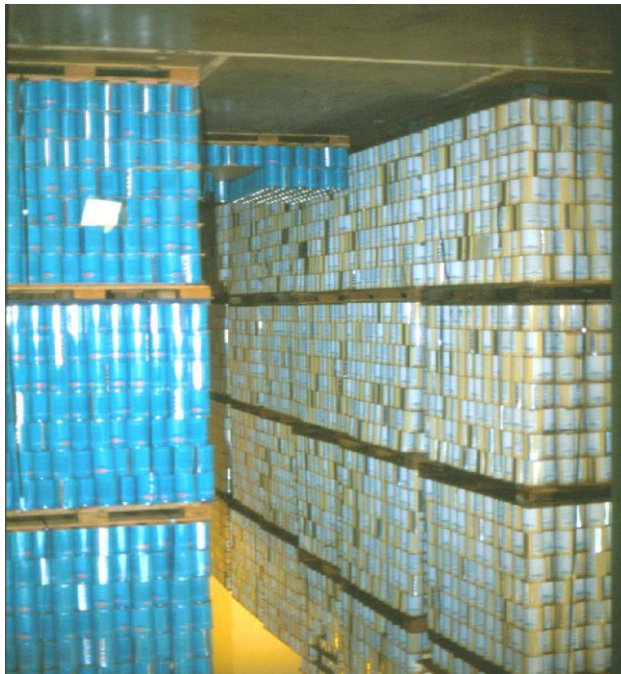
Vegetable Cultivar Trials and Seed Extraction



Seed Cleaning, Drying, and Storing



Seed Grading, Packaging, Storage



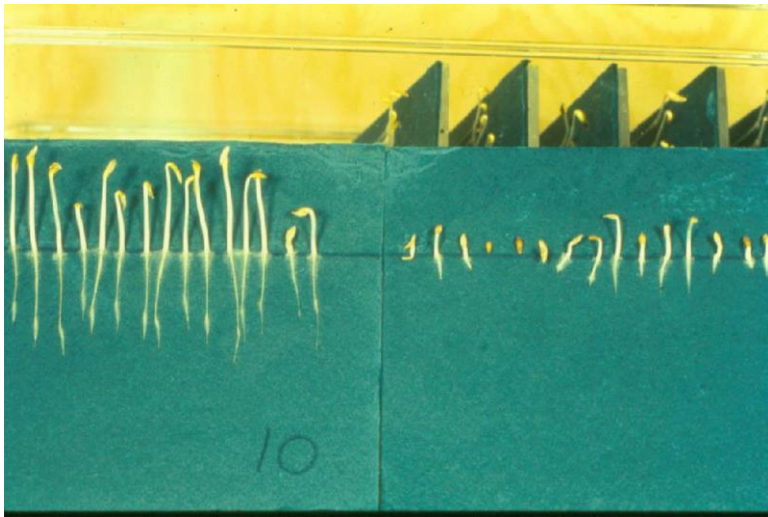
Lotus (*Nerumbo nucifera*)



Seeds stuck in mud for over 1000 years germinated well

Seed Storage

National Germplasm Storage Lab, Fort Collins, CO



Germination of Primed Seeds



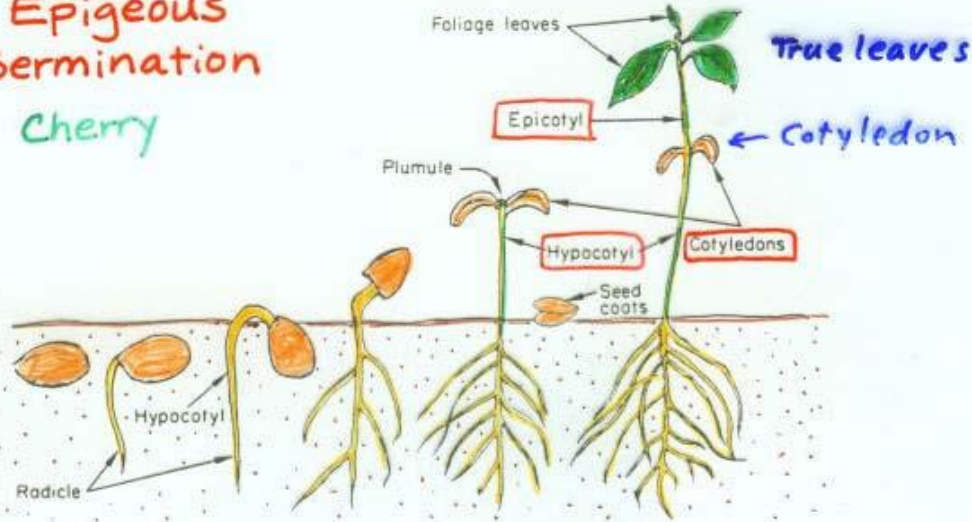
**Irregularities in seed germination,
poor quality seeds**



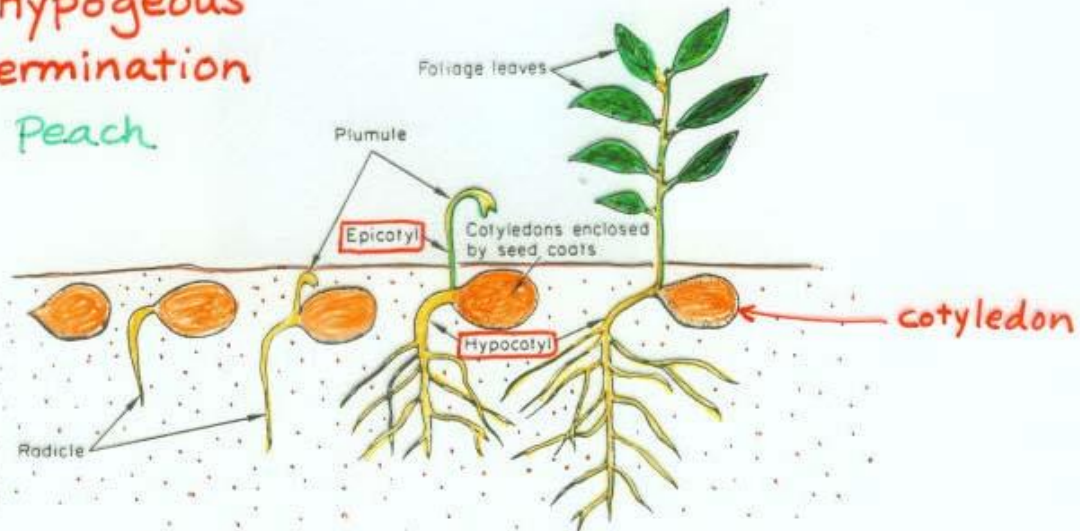
**Uniformity in the germination of
primed seeds**

Germination of Angiosperm Seeds

Epigeous
Germination
Cherry

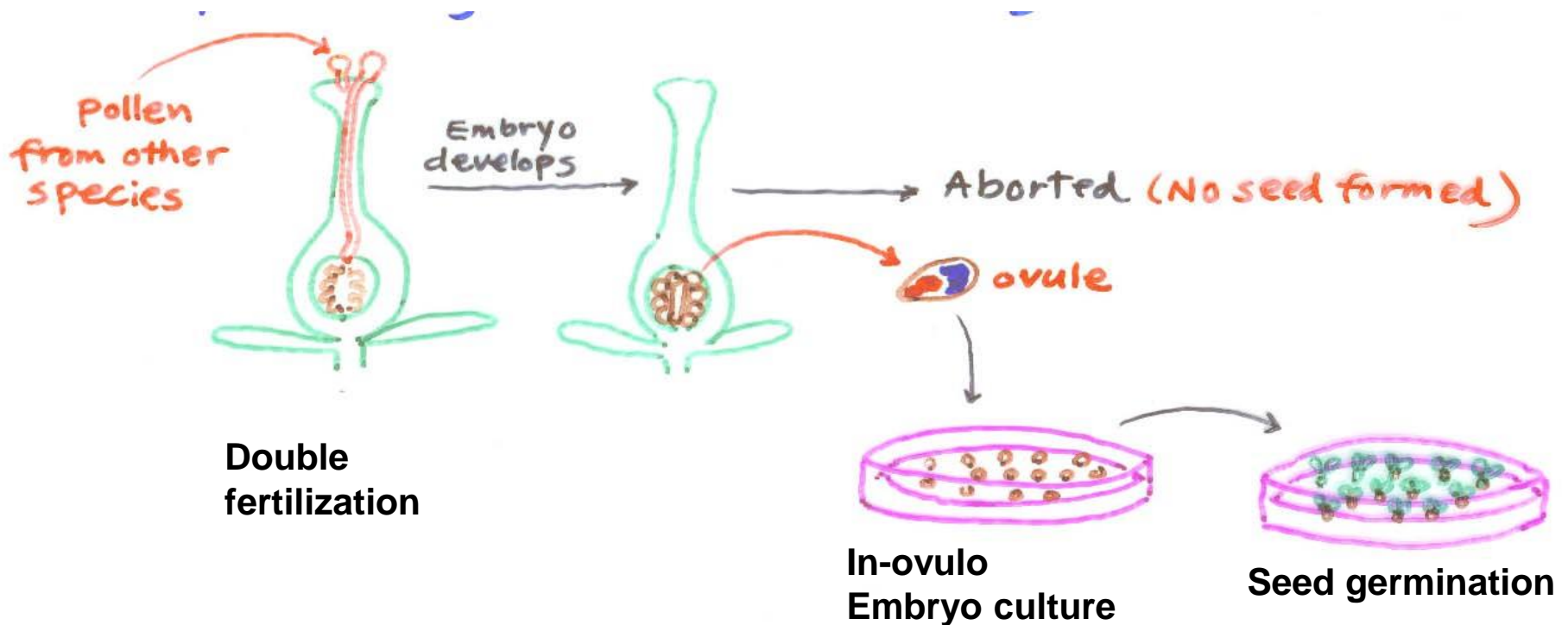


Hypogeous
Germination
Peach

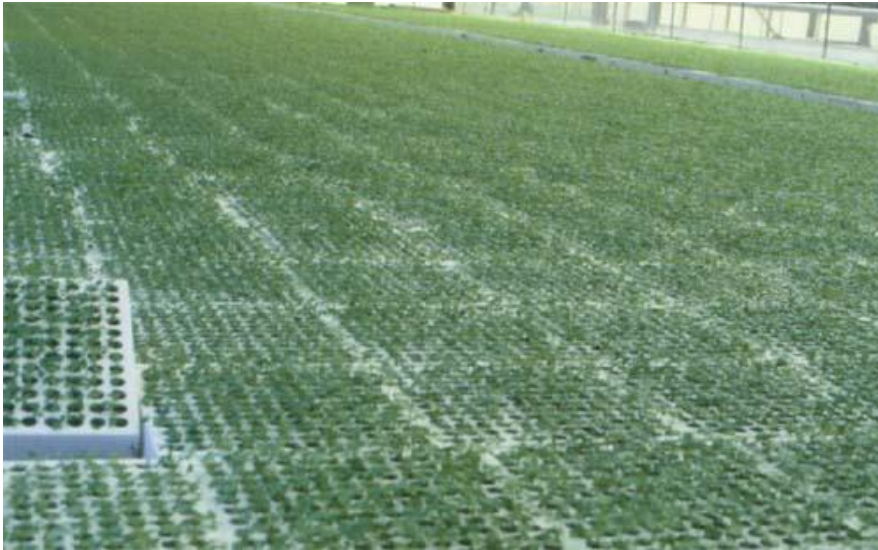


Embryo Culture

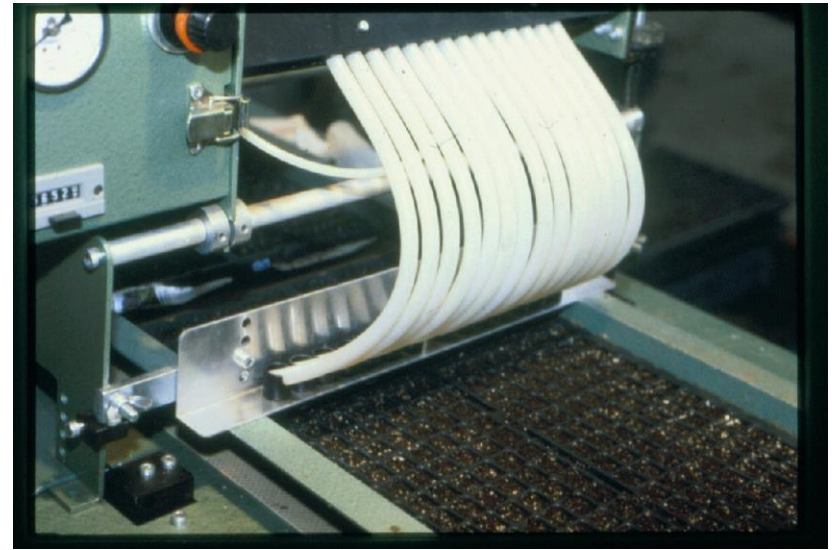
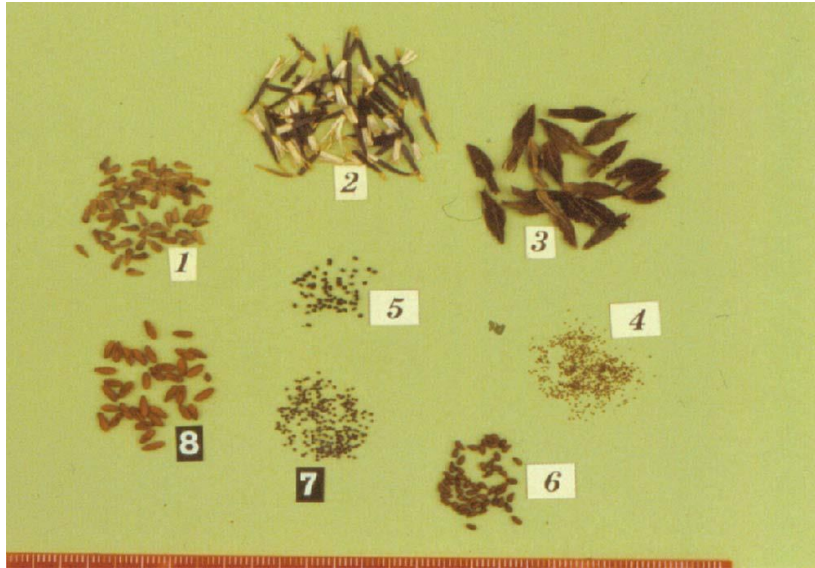
- Immature zygotic embryos are excised and cultured *in vitro* to obtain viable seeds
- Used in abortive interspecific crosses (i.e., potato)
- Used for embryos lacking endosperm (i.e., orchids)



Field Production of Vegetables, California



Seedling Production in Greenhouse



Plugs to Cell Packs



Seed Propagation for Trees

