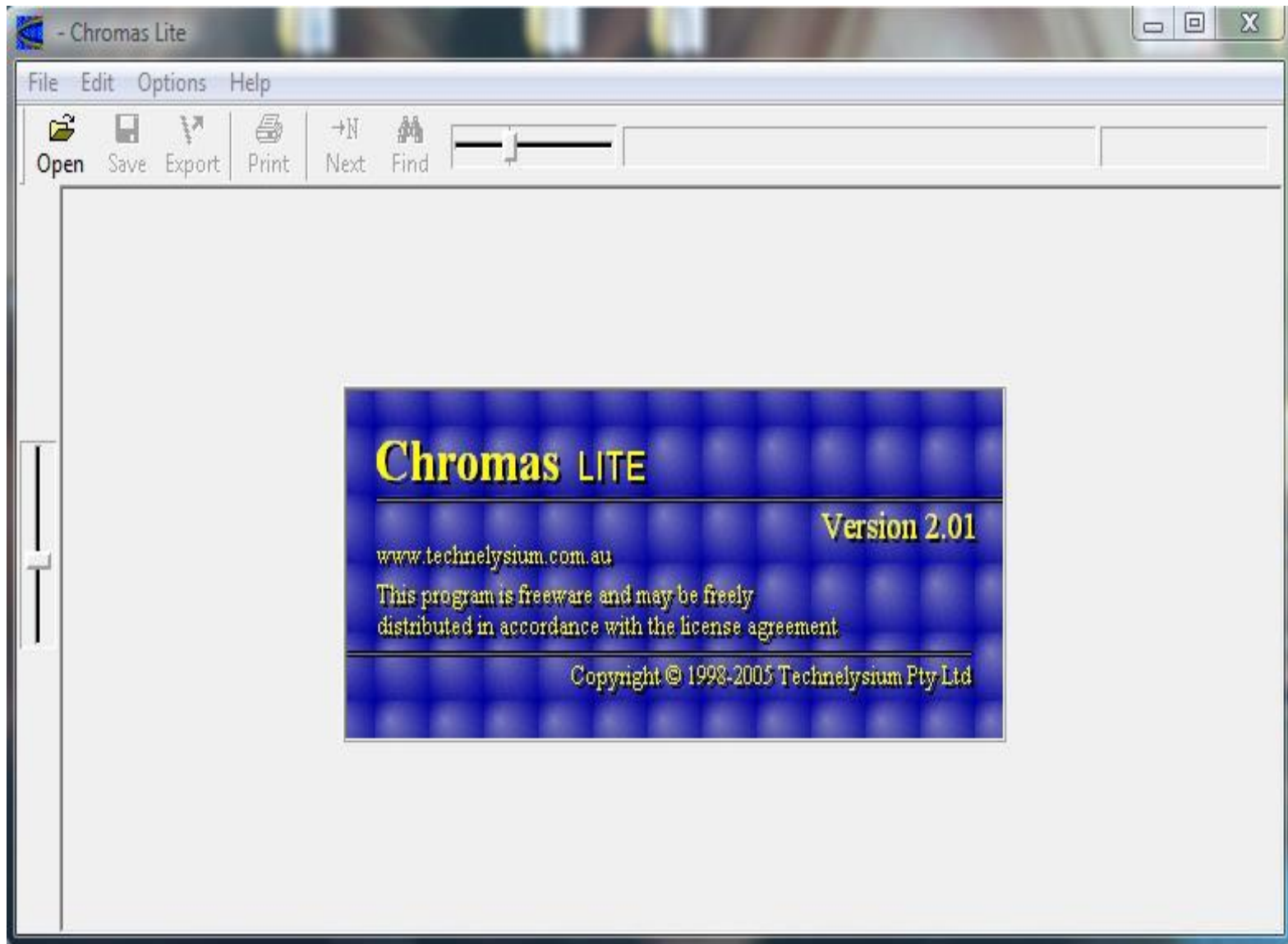
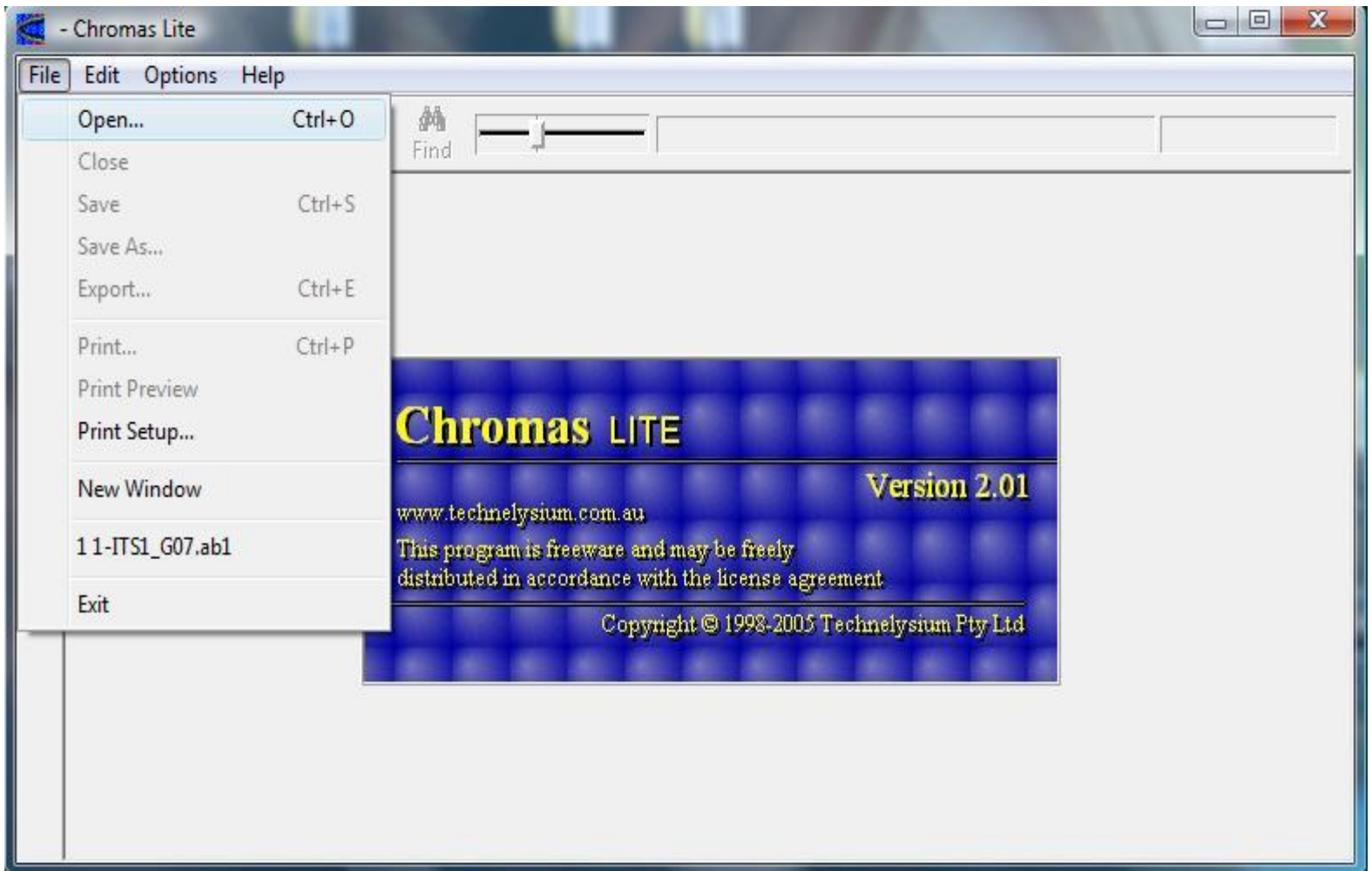
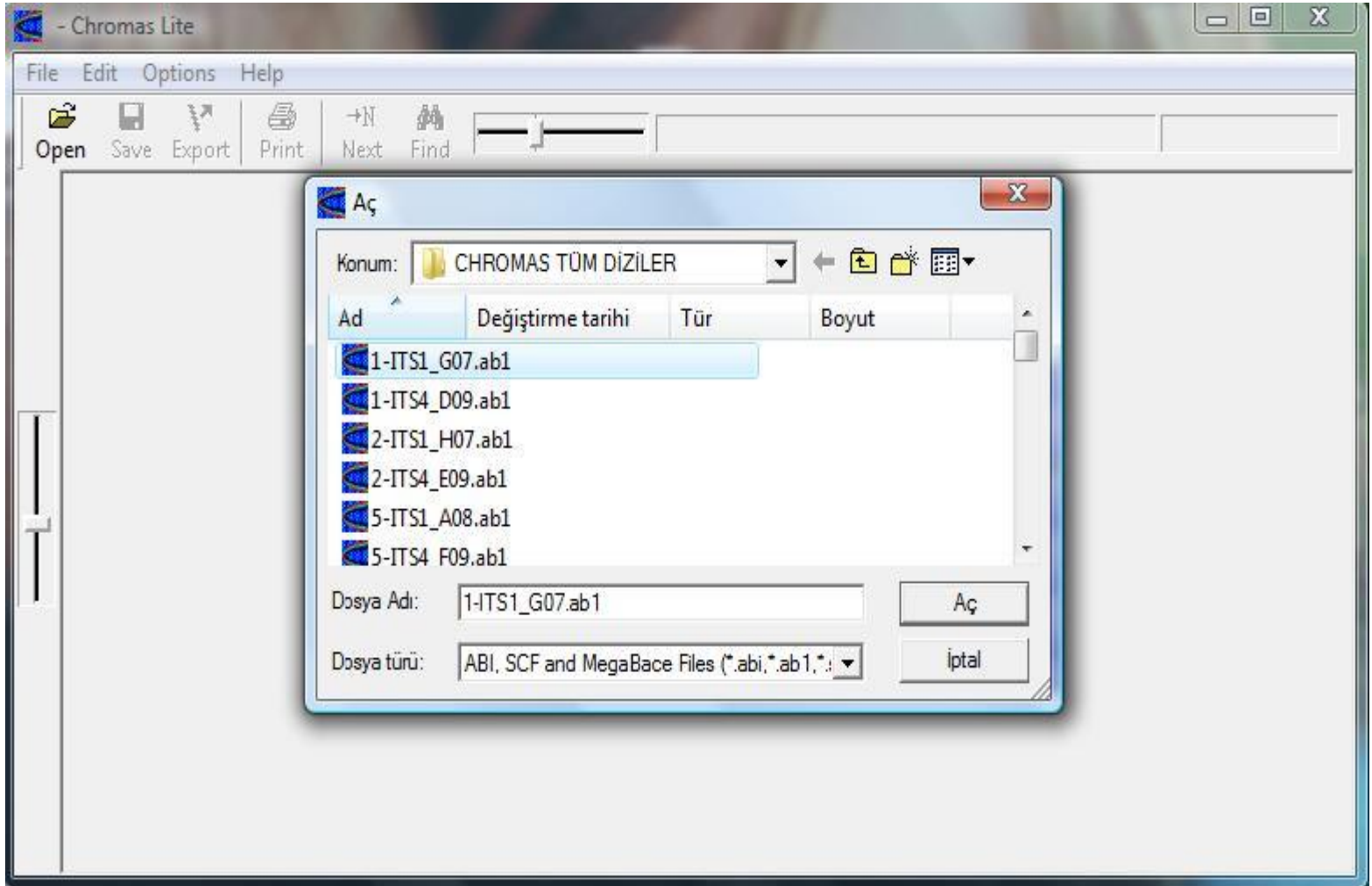


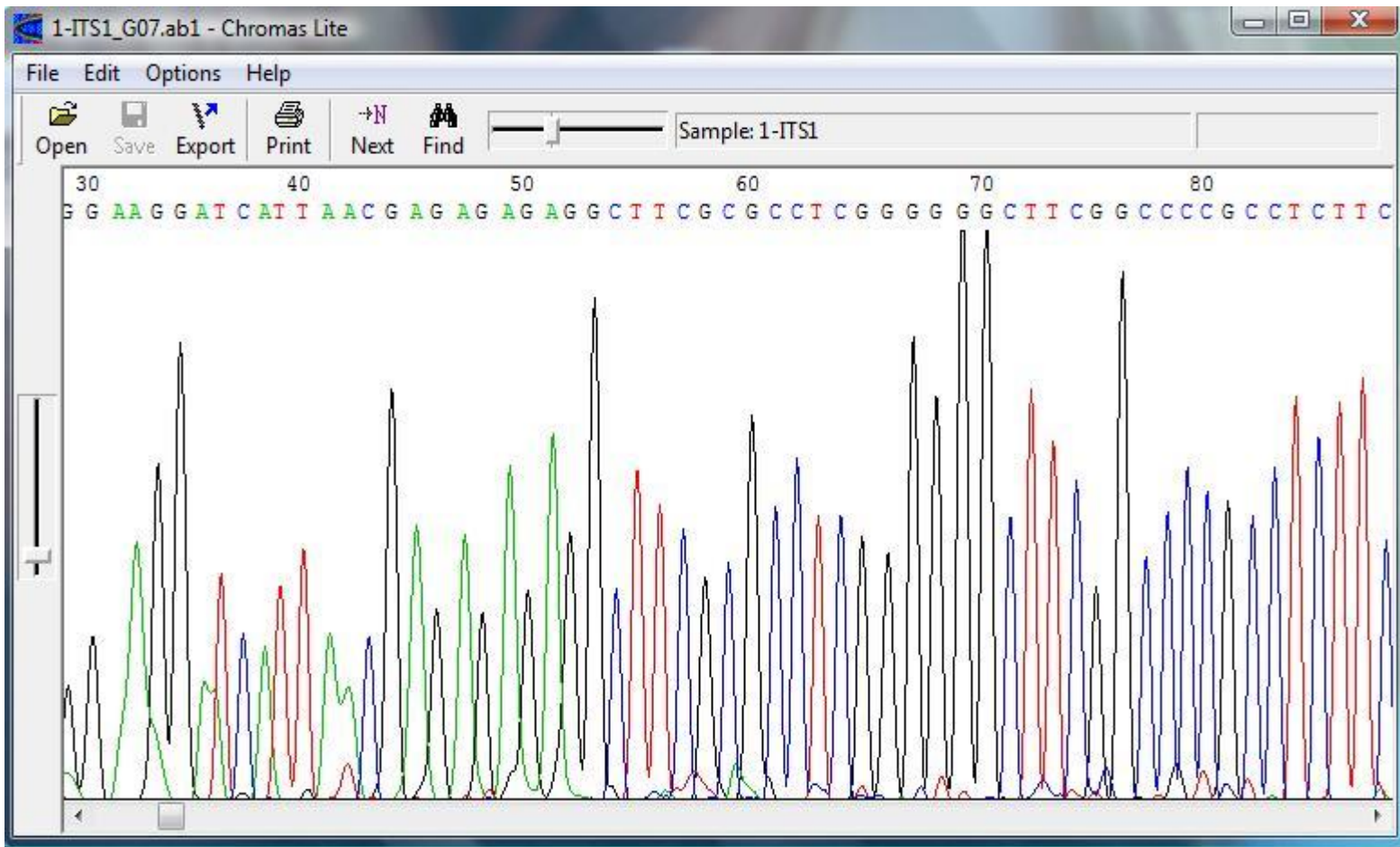


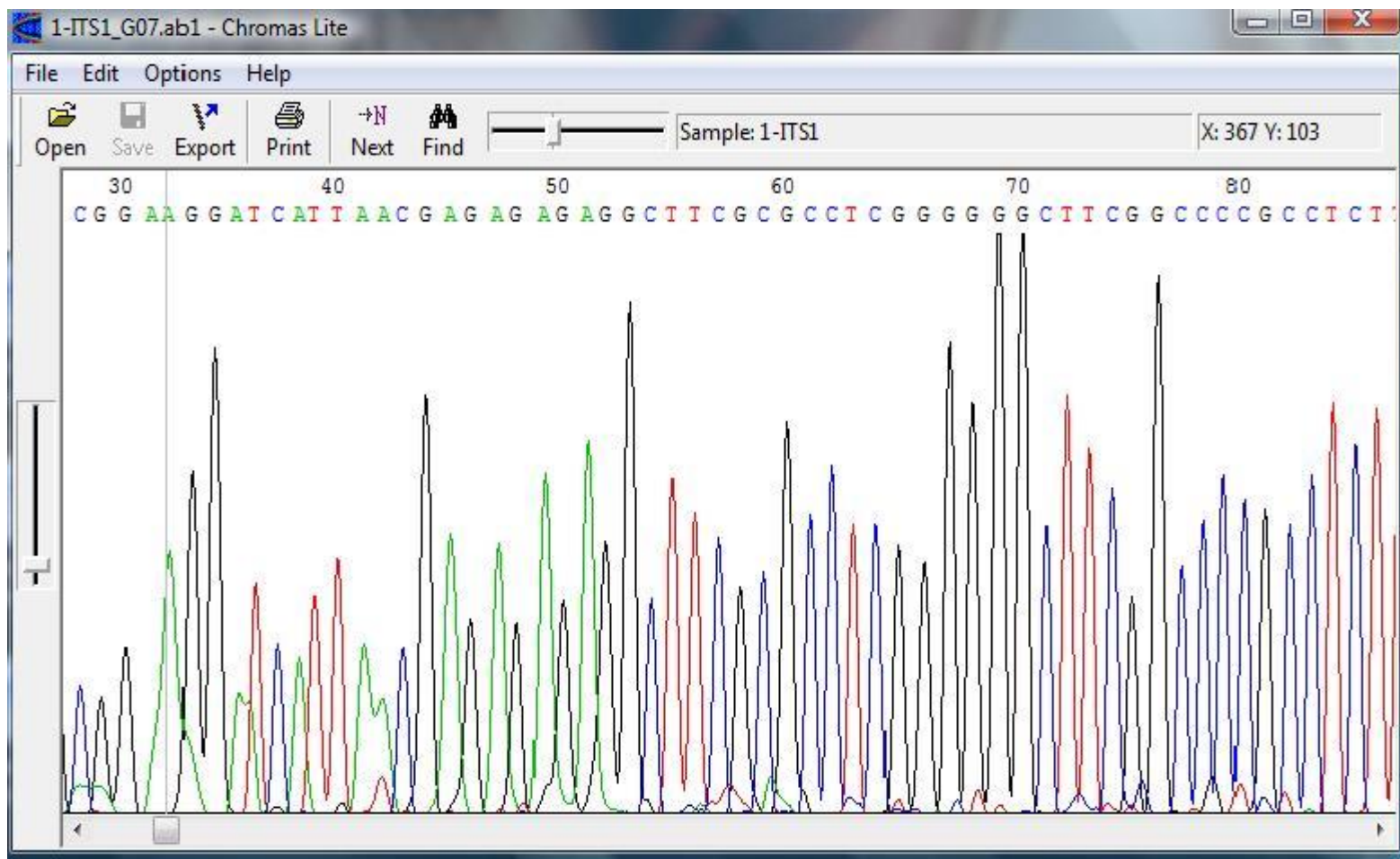
# Dizi ANALIZI



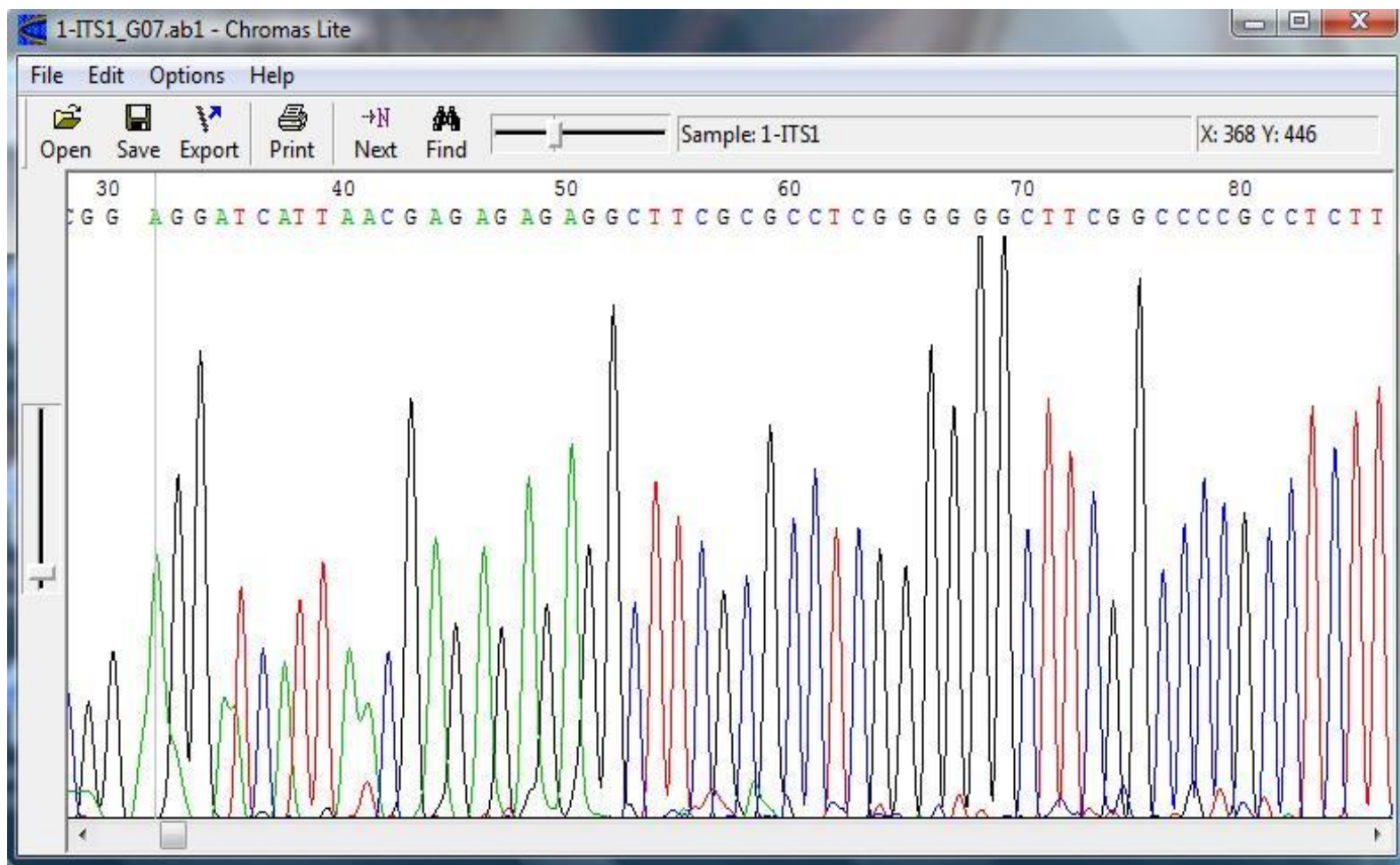


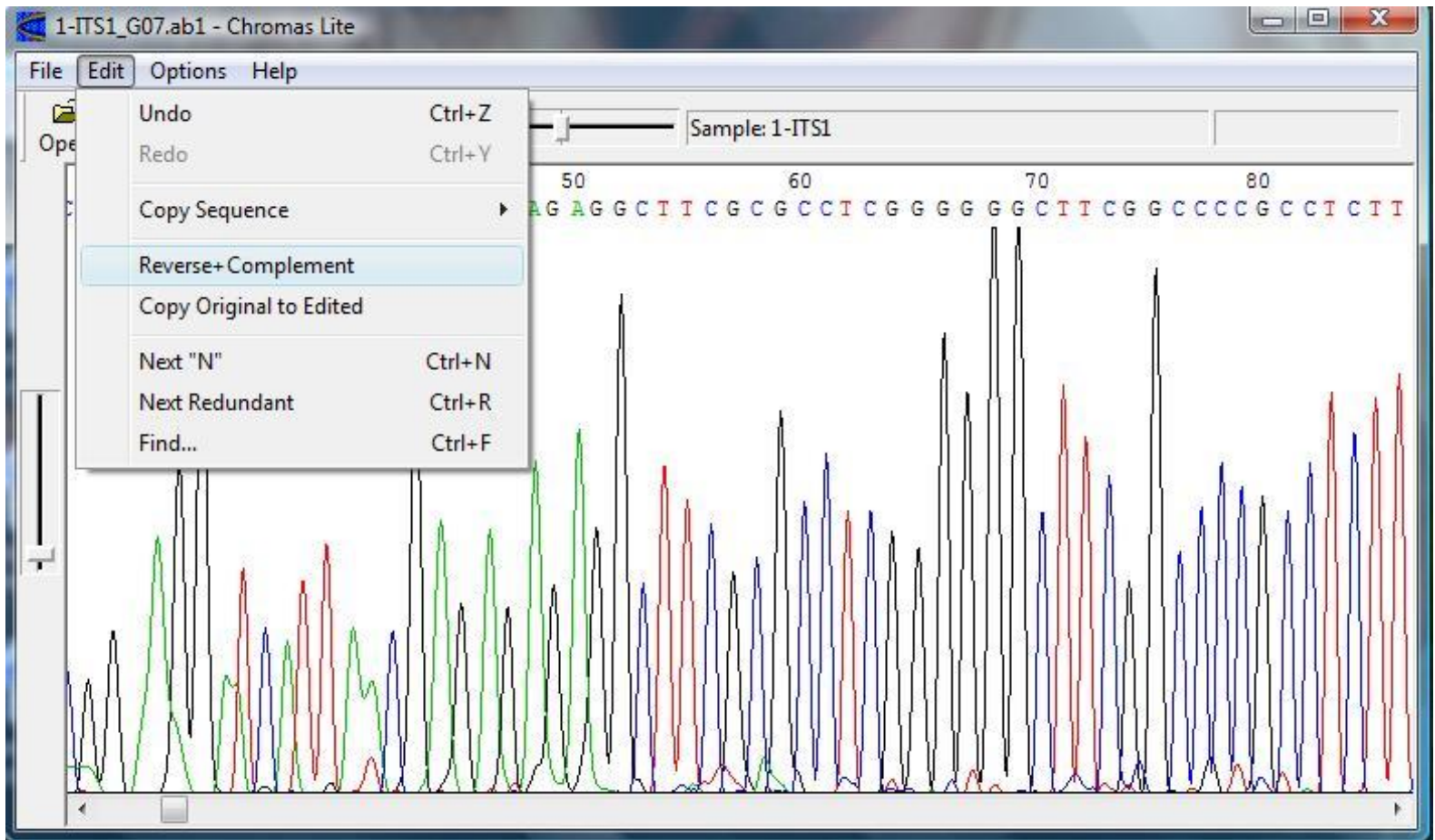




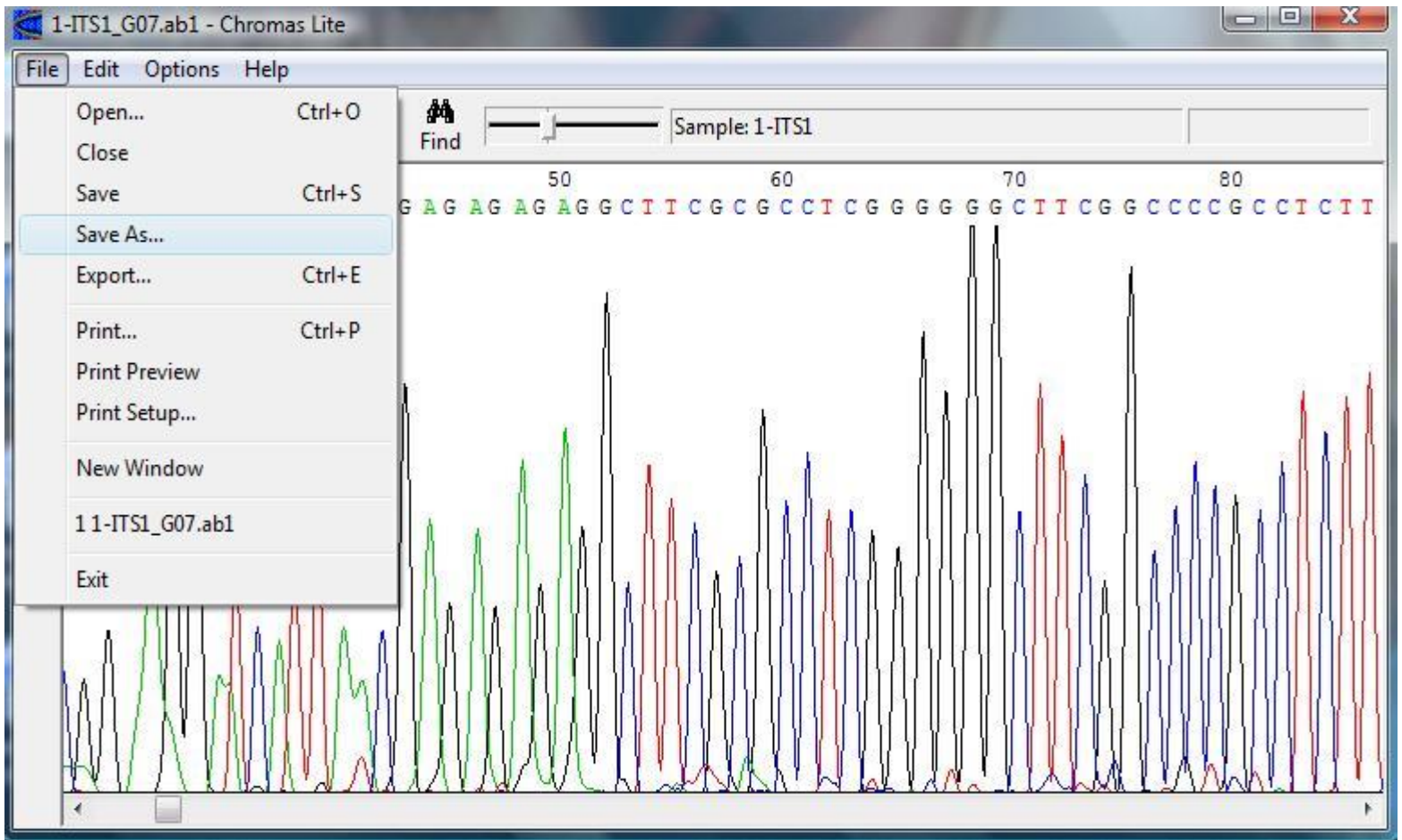


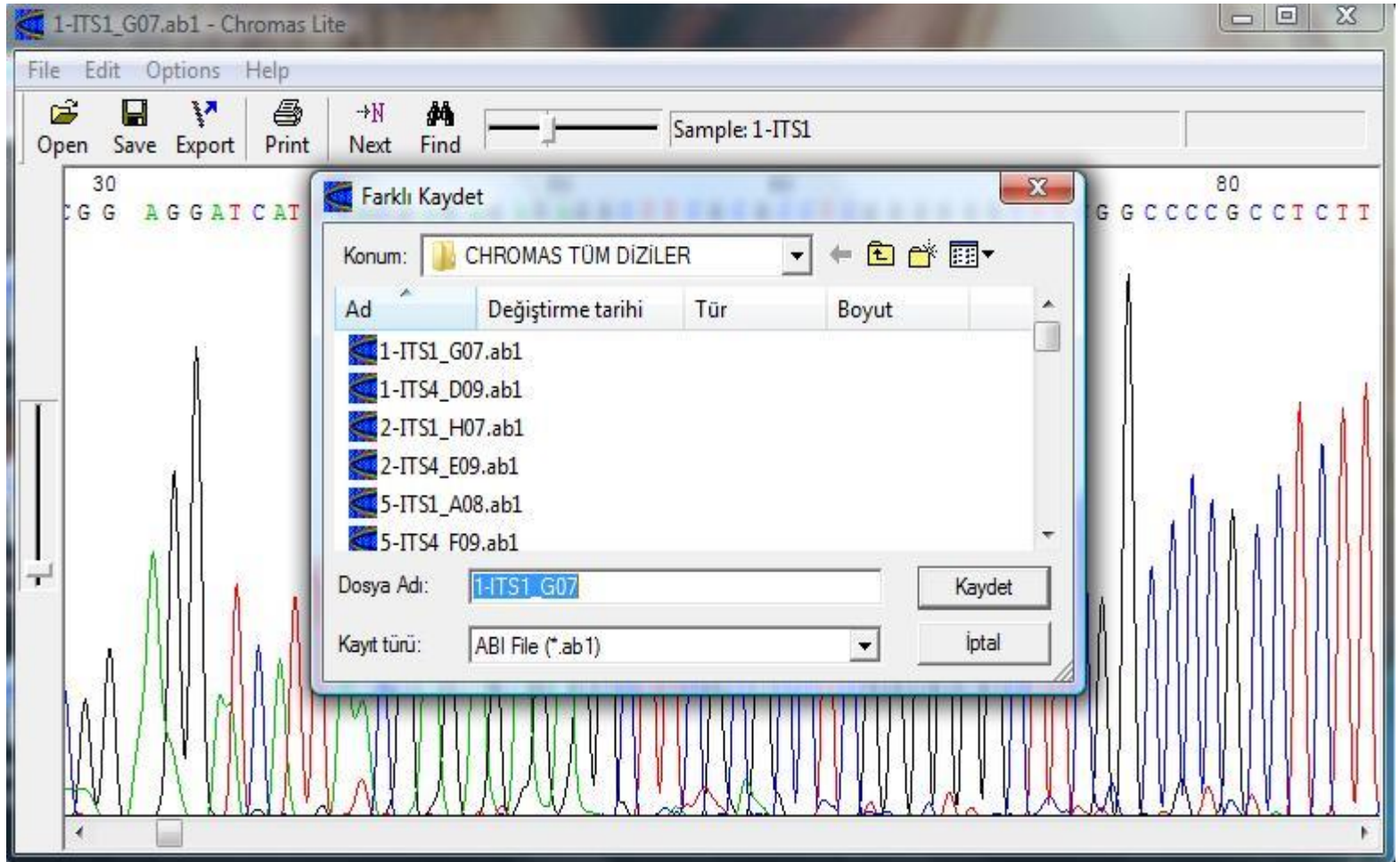


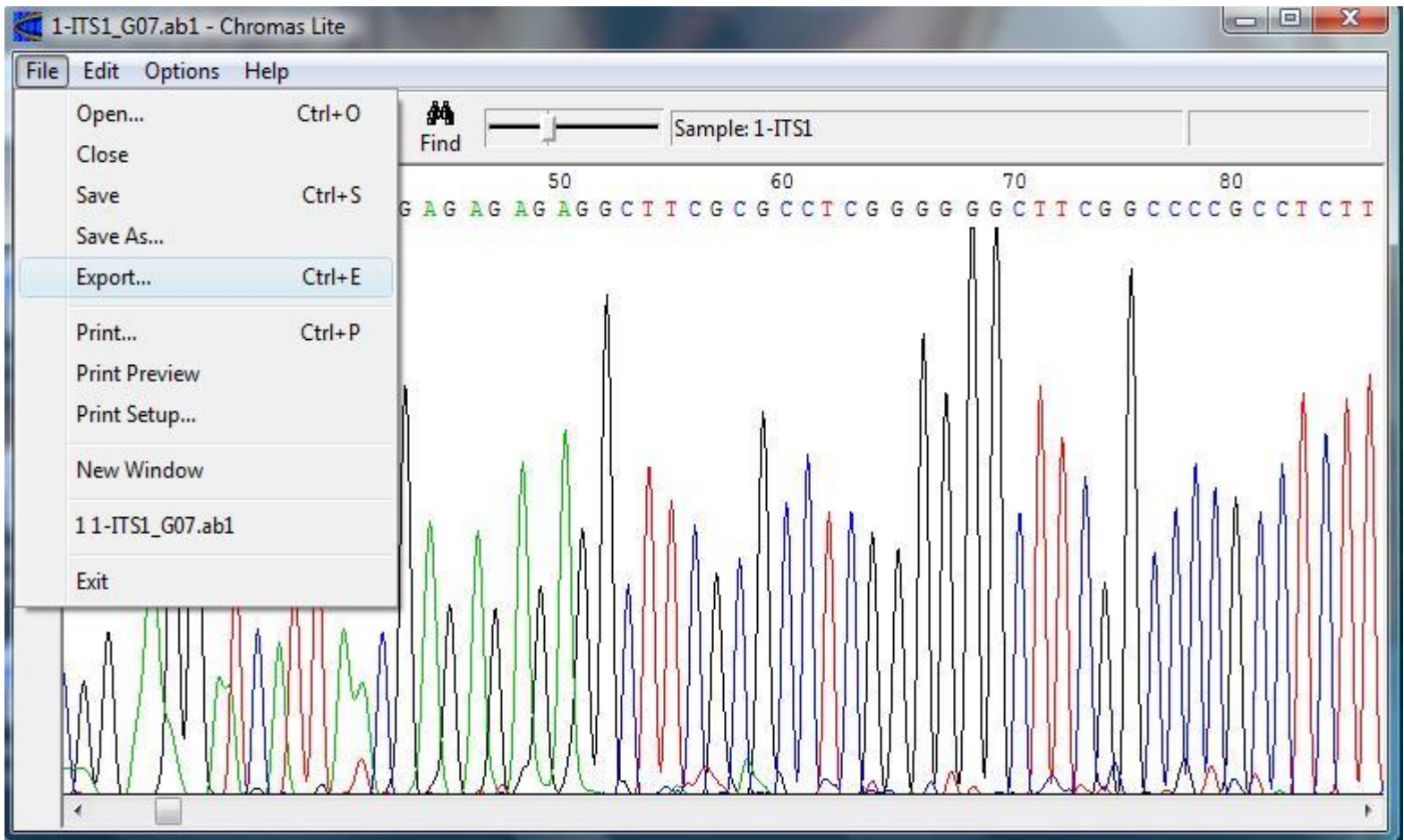












1-ITS1\_G07.fa - Not Defteri

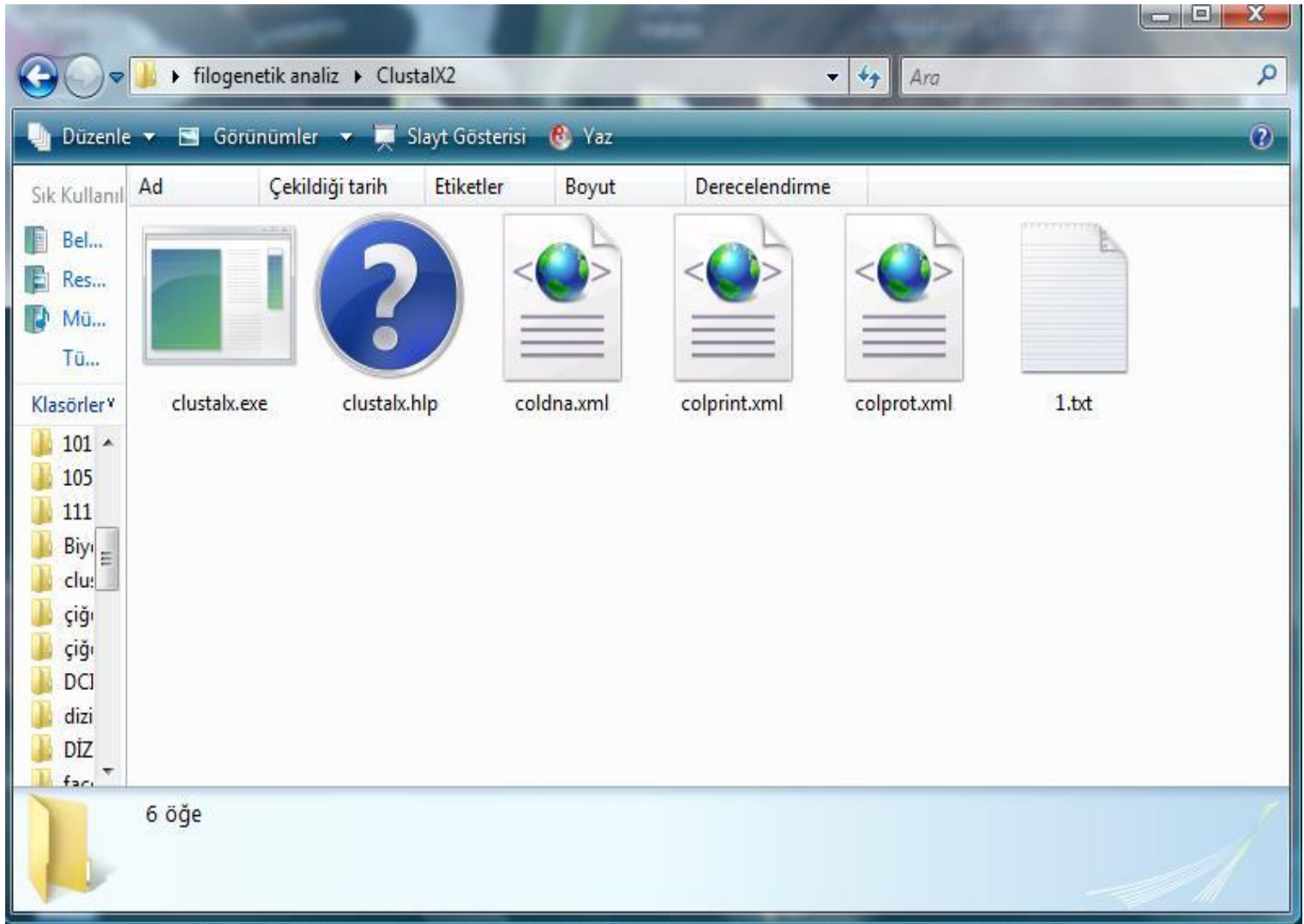
Dosya Düzen Biçim Görünüm Yardım

```
>1-ITS1
GGTGTAAAGGTTTCCGTAAGTGAACCTGCGGAAGGATCATTAAACGAGAGAGAGGGCTTCGCG
CCTCGGGGGGCTTCGGCCCCGCCTTTCACCCCGTGC GTACCTACTTTGTTGCTTTGGCG
GGCCTCGGTTCCCCCGACGTCGGCCGGGGTTTCCCCGGGCCGGGC GCGTGCCCGCCAGA
GACCGTACCCAAACCCGTCCATCAGTGTTTCGTC TGAGTACCAAGTAAATAACTAAAAC T
TTCAACAACGGATCTCTTGGTTC TGGCATCGATGAAGAACGCAGCGAAATGCGATAAGTA
ATGTGAATTGCAGAATTCAGTGAATCATCGAATCTTTGAACGCACATTGC GCCCCCTGGT
ATTCCGGGGGGCATGCCTGTTGAGCGTCATTGCAACCC TCAAGTATCGCTTGGTGTTGG
GCTTTCGTCCCTCGGACGTGCCCGAAAGTTAGTGGCGGTTCA TTGGGACCTCGAGCGCAG
TCGAAATTATCATCCGCTCTAGGTTGCGGTTGCGGCCGGCCAGCCAACCCCAATTATTT
CAATGGTTGACCTCGGATCAGGTAGGGATACCCGCTGAACTTAGCATCTTTAAAAGGGGG
GGGAAAAAAT
```

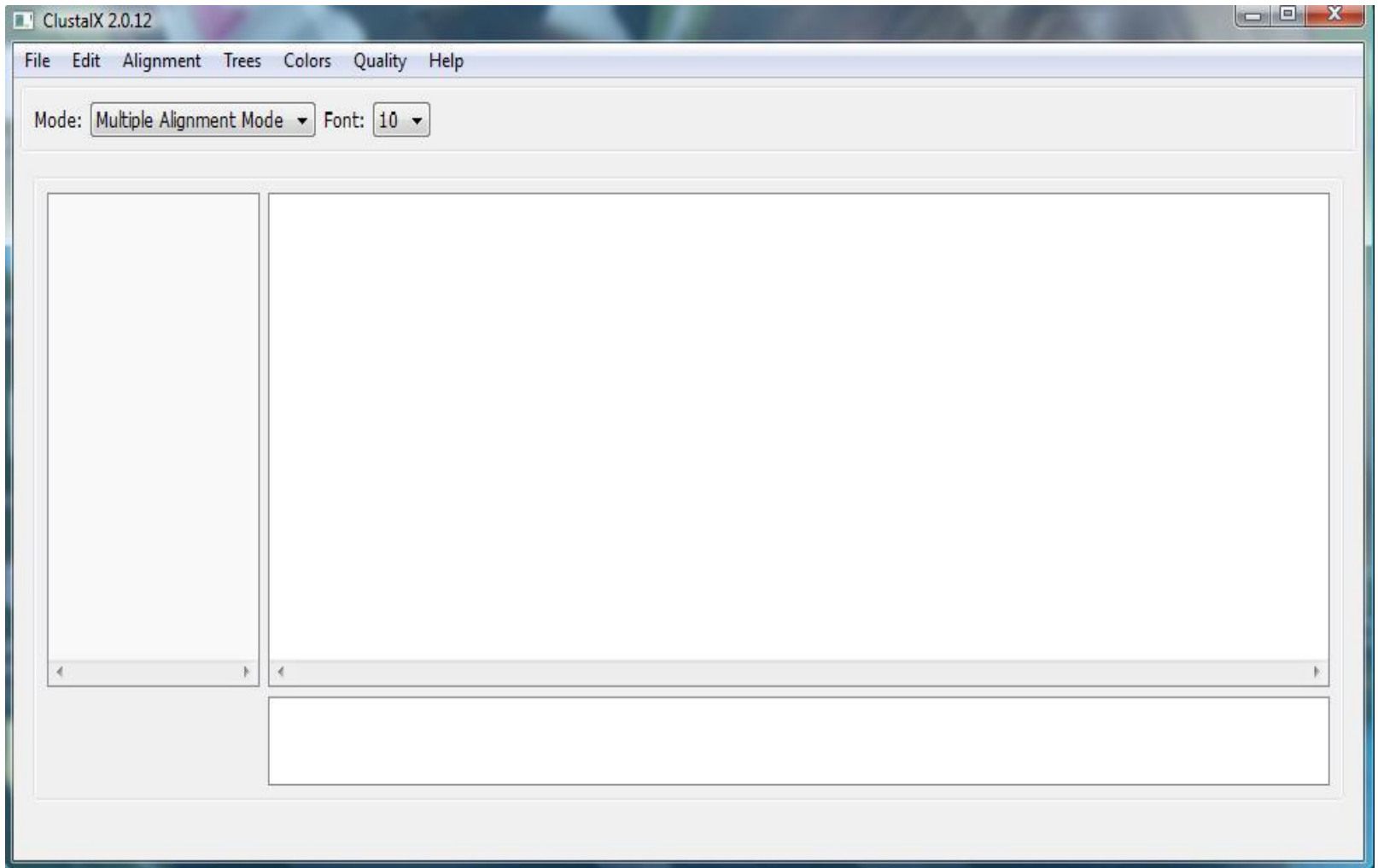


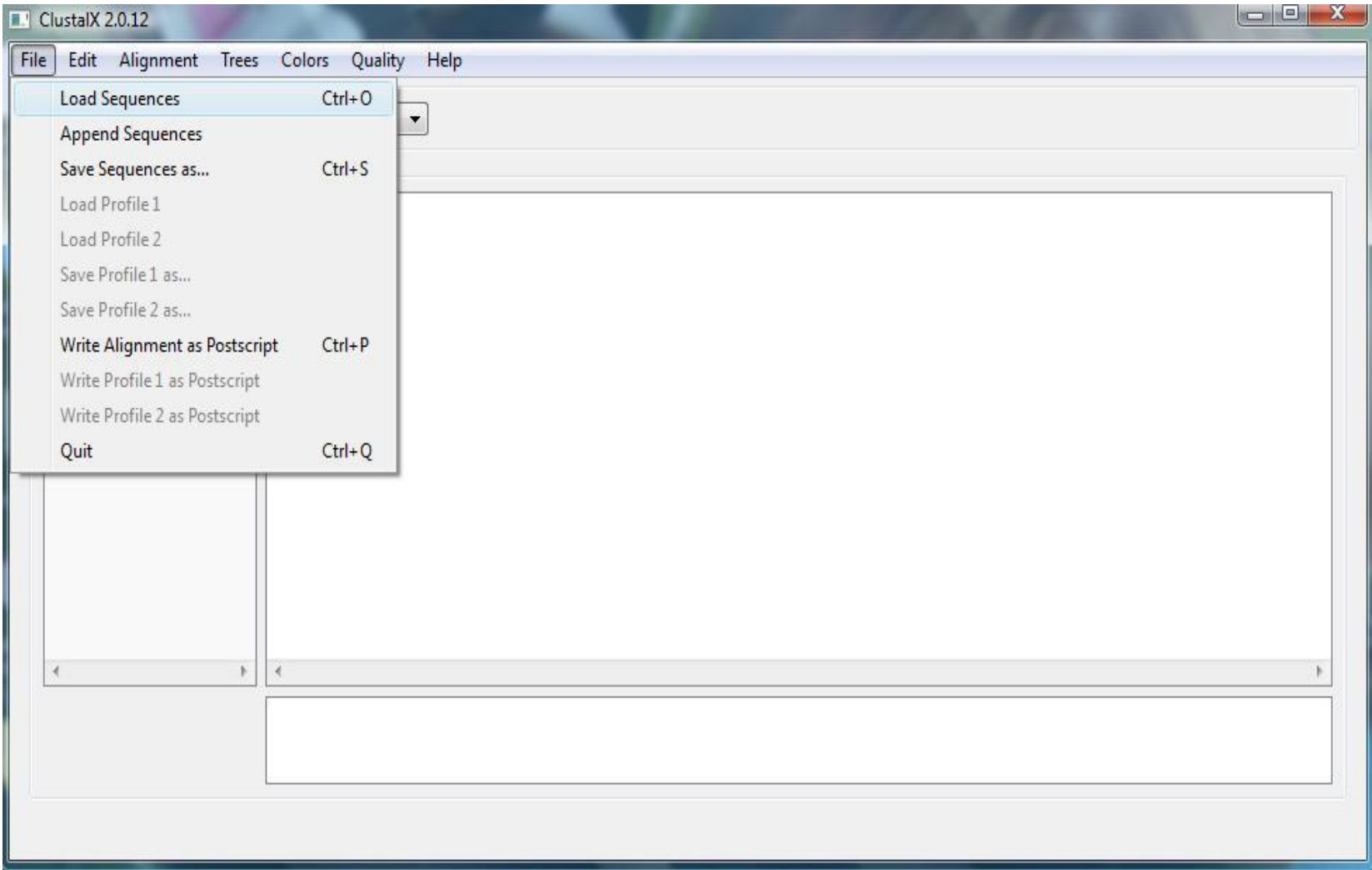
```
1.txt - Not Defteri
Dosya Düzen Biçim Görünüm Yardım
>1-ITS1
GGTGTAAAGGTTTCCGTAAGTGAACCTGCGGAAGGATCATTAAACGAGAGAGAGGCTTCGCG
CCTCGGGGGGCTTCGGCCCCGCCTCTTCACCCCCGTGCGTACCTACTTTGTTGCTTTGGCG
GGCTCGGTTCCCCCGACGTCGGCCCGGGGTTTCCCCGGGCCGGGC GCGTGCCCCGCCAGA
GACCGTACCCAAACCCGTCCATCAGTGTTTCGTC TGAGTACCAAGTAAATAACTAAAAC T
TTCAACAACGGATCTCTTGGTTCGGCATCGATGAAGAACGCAGCGAAATGCGATAAGTA
ATGTGAATTGCAGAATTCAGTGAATCATCGAATCTTTGAACGCACATTGCGCCCCCTGGT
ATTCCGGGGGGCATGCCTGTTCGAGCGTCATTGCAACCCTCAAGTATCGCTTGGTGTGG
GCTTTCGTCCCTCGGACGTGCCCGAAAGTTAGTGGCGGTTTCATTGGGACCTCGAGCGCAG
TCGAAATTATCATCCGCTCTAGGTTTCGCGTTGCGGCCGGCCAGCCAACCCCCAATTATTT
CAATGGTTGACCTCGGATCAGGTAGGGATACCCGCTGAACTTAGCATCTTTAAAAGGGGG
GGGAAAAAAAT

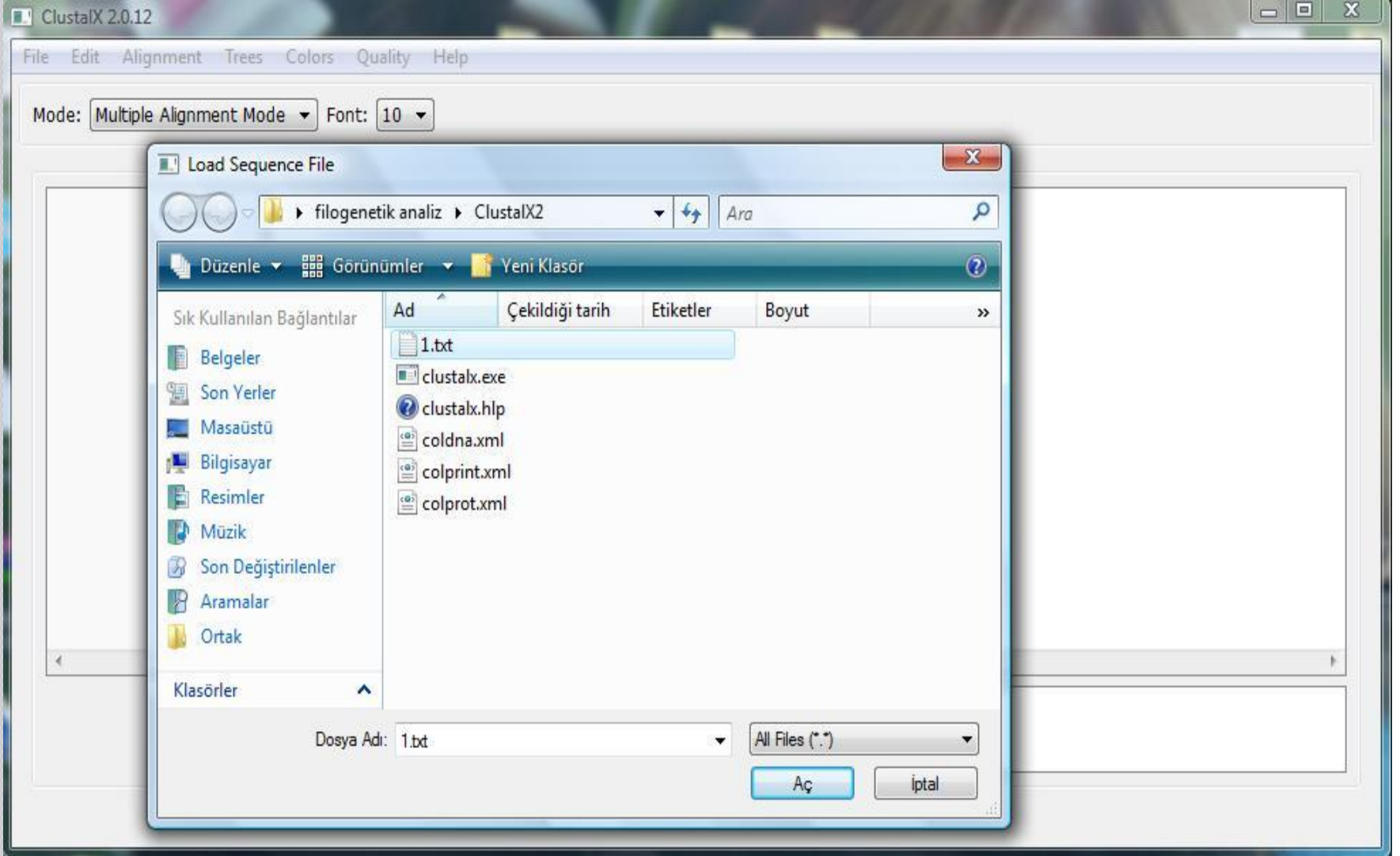
>1-ITS4
GGATCTTTTGTCTTCTTTTTTTGAGGAGTAAAAGTCGTAACAAGGTTTCCGTAGGTGAAC
CTGCGGAAGGATCATTAAACGAGAGAGAGGCTTCGCGCCTCGGGGGGCTTCGGCCCCGCCT
CTTCACCCC GTGCGTACCTACTTTGTTGCTTTGGCGGGCCTCGGTTCCCCCGACGTCGGC
CCGGGGTTTCCCCGGGCCGGGC GCGTGCCCCGCCAGAGACC GTACCCAAACCCGTCCATC
AGTGTTTCGTC TGAGTACCAAGTAAATAACTAAAAC TTTCAACAACGGATCTCTTGGTTC T
GGCATCGATGAAGAACGCAGCGAAATGCGATAAGTAATGTGAATTGCAGAATTCAGTGAA
TCATCGAATCTTTGAACGCACATTGCGCCCCCTGGTATTCCGGGGGGCATGCCTGTTCGA
GCGTCATTGCAACCC TCAAGTATCGCTTGGTGTGGGCTTTCGTCCCTCGGACGTGCCCG
AAAGTTAGTGGCGGTTTCATTGGGACCTCGAGCGCAGTCGAAATTATCATCCGCTCTAGGT
TCGCGTTGCGGCCGGCCAGCCAACCCCCAATTATTTCAATGGTGACCTCGGATCAGGTAG
GAACCCGCG
```











ClustalX 2.0.12

File Edit Alignment Trees Colors Quality Help

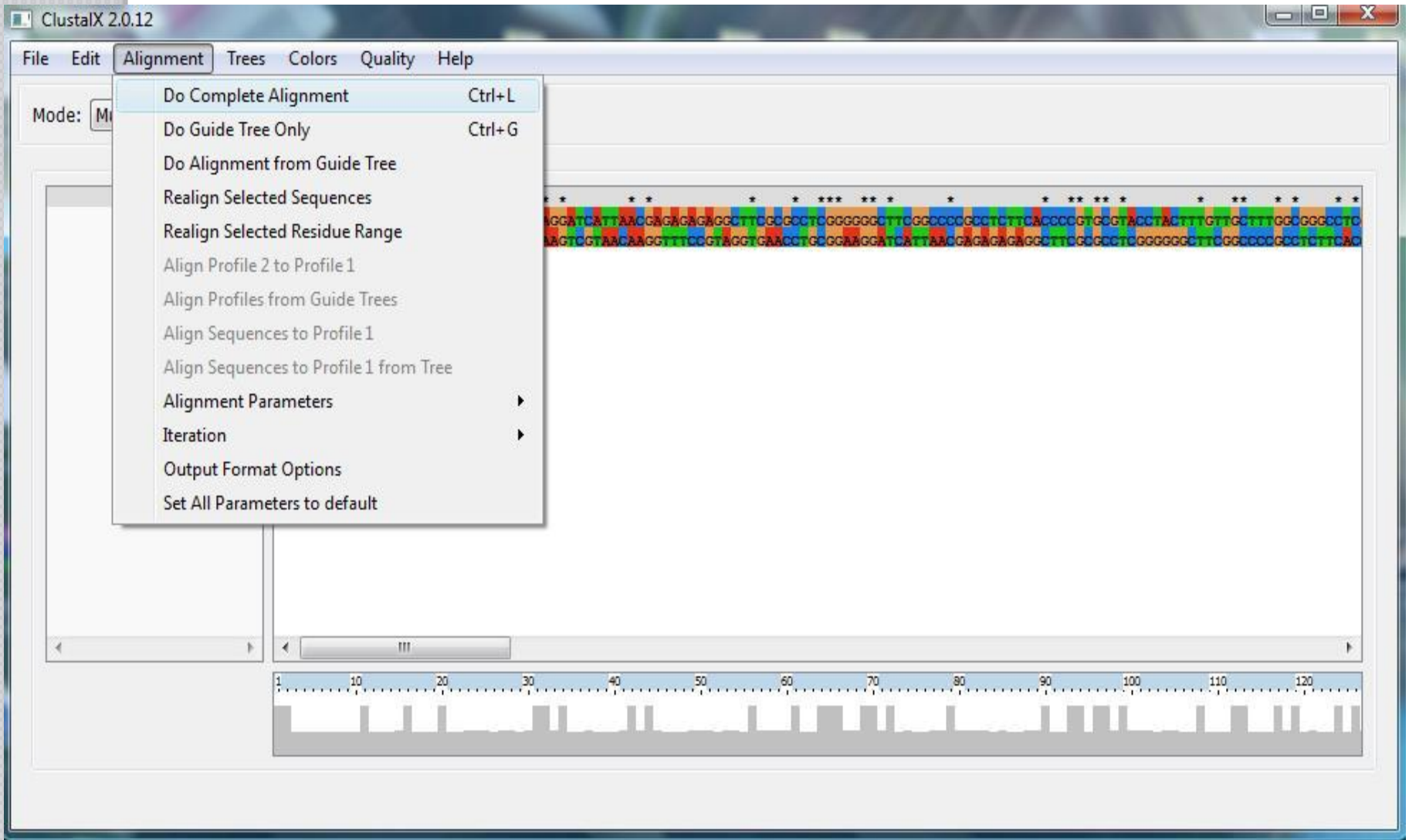
Mode:  Font:

<p>1-IT81</p> <p>1-IT84</p>	<pre> **          *   *   *           ** *   * *           *   * * * * *   *   * * * * *   * GGTGTAAAGTTCCGTAAAGTGAACCTGGCGAAGGATCATTAAAGGAGAGAGGCTTCGGGCCTGGGGGGCTTGGGCCCGCCTCTTCACCCCGTGGGTACCTACTTTGTTGCTTTGGGGGGCCTC GGATCTTTTGTCTCTTTTTTGGGGGTAAAAGTGTACCAAGGTTCCGTAGGTGAACCTGGCGAAGGATCATTAAAGGAGAGAGGCTTCGGGCCTGGGGGGCTTGGGCCCGCCTCTTCAC </pre>
-----------------------------	--

<

>

1 10 20 30 40 50 60 70 80 90 100 110 120



ClustalX 2.0.12

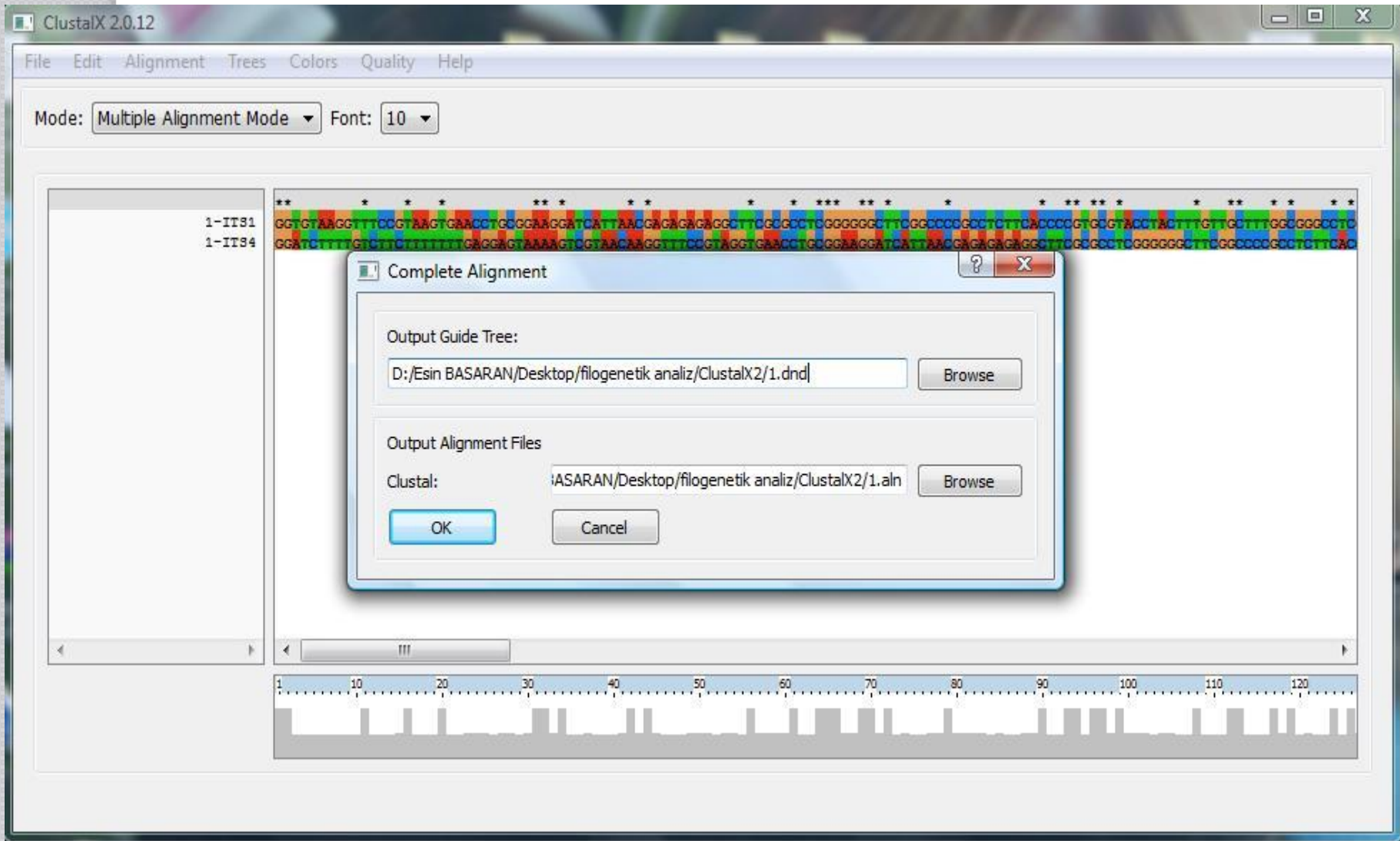
File Edit Alignment Trees Colors Quality Help

Mode: M

- Do Complete Alignment Ctrl+L
- Do Guide Tree Only Ctrl+G
- Do Alignment from Guide Tree
- Realign Selected Sequences
- Realign Selected Residue Range
- Align Profile 2 to Profile 1
- Align Profiles from Guide Trees
- Align Sequences to Profile 1
- Align Sequences to Profile 1 from Tree
- Alignment Parameters ▶
- Iteration ▶
- Output Format Options
- Set All Parameters to default

\* \* \* \* \*  
GGATCATTAACGAGAGAGAGGCTTCGGGCTCGGGGGGCTTCGGCCCGGCTCTTCACCCCGTGGGTACCTACTTTGTTGCTTTGGGGGGCTC  
AGTCGTAAACAAGGTTCCGTAGGTGAACCTCGGGAAGGATCATTAACGAGAGAGAGGCTTCGGGCTCGGGGGGCTTCGGCCCGGCTCTTCAC







ClustalX 2.0.12

File Edit Alignment Trees Colors Quality Help

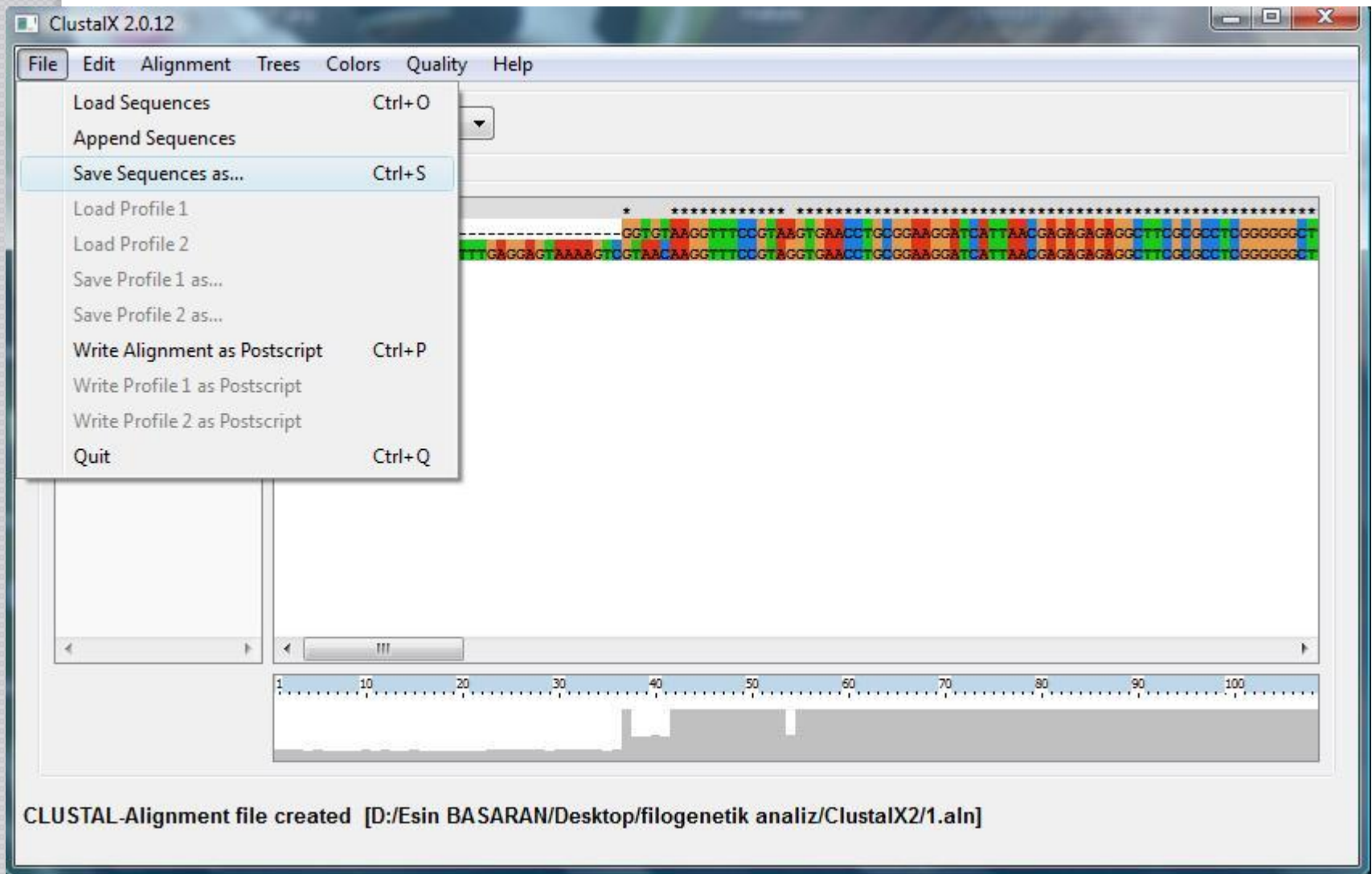
Mode: Multiple Alignment Mode Font: 10

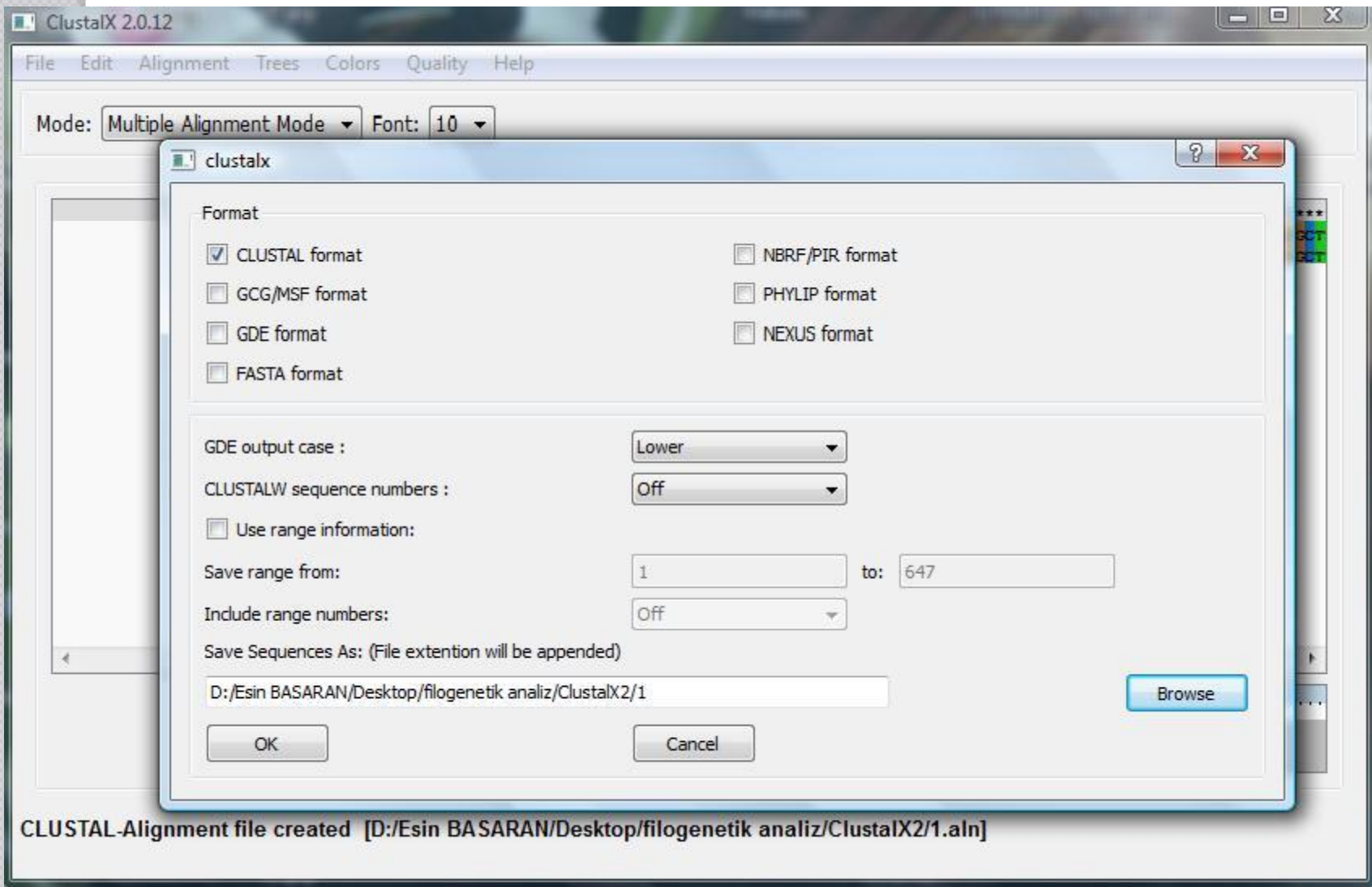
1-ITS1  
1-ITS4

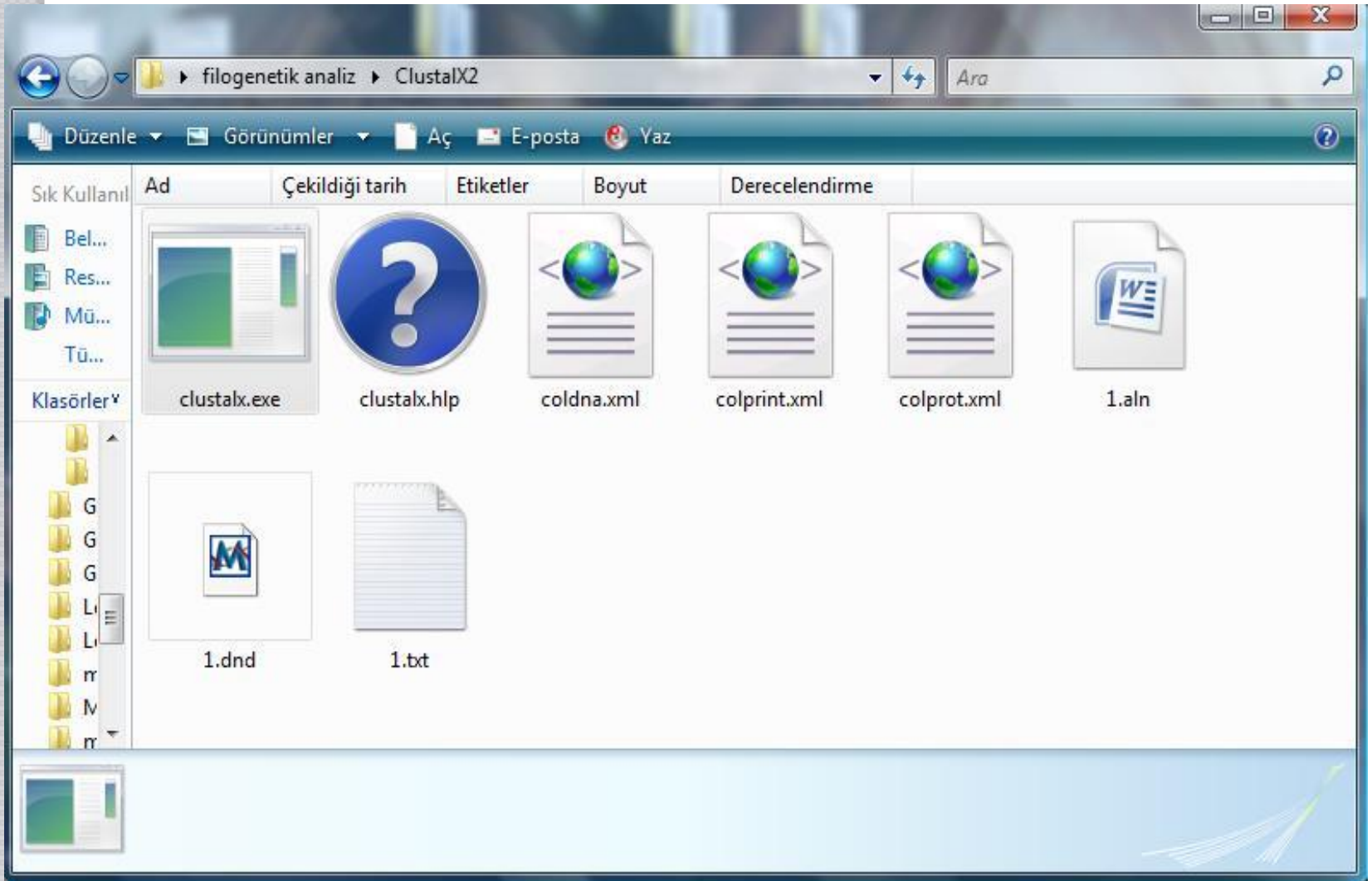
\*\*\*\*\*  
-----GGTGTAAAGGTTCCGTAAGTGAACCTGGGGAAGGATCATTAAAGGAGAGAGAGGCTTCGGGCTCGGGGGGCTTCGGCCCCGCCCTTCACCCCGTGGGTACCTACTTTGTTGCT  
GGAGTAAAGTCTGTAACAAGGTTCCGTAGGTGAACCTGGGGAAGGATCATTAAAGGAGAGAGAGGCTTCGGGCTCGGGGGGCTTCGGCCCCGCCCTTCACCCCGTGGGTACCTACTTTGTTGCT

30 40 50 60 70 80 90 100 110 120 130 140 150

CLUSTAL-Alignment file created [D:/Esin BASARAN/Desktop/filogenetik analiz/ClustalX2/1.aln]







1.aln - Microsoft Word

Giriş Ekle Sayfa Düzeni Başvurular Postalar Gözden Geçir Görünüm

Yapıştır Pano Yazı Tipi Paragraf Stiller Düzenleme

Courier New 10,5

1-IT81  
CTGCGGAGGATCATTAAAGAGAGAGGGCTTCGCGXTCGGGGGCTTCGGCCCCGCT  
1-IT84  
CTGCGGAGGATCATTAAAGAGAGAGGGCTTCGCGXTCGGGGGCTTCGGCCCCGCT  
.....

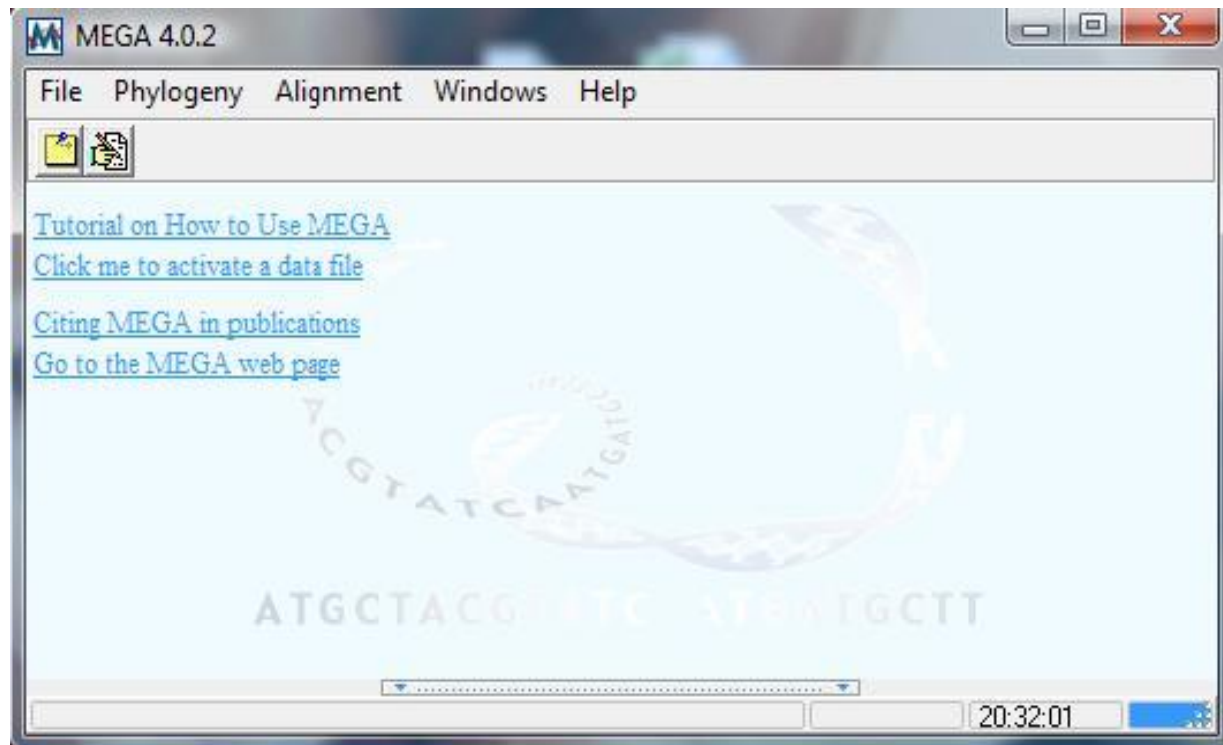
1-IT81  
CTTCACCCCGTGCGTACCTACTTTGTTGCTTTGGCGGGCTCGGTTCCCCCGAGTCCGG  
1-IT84  
CTTCACCCCGTGCGTACCTACTTTGTTGCTTTGGCGGGCTCGGTTCCCCCGAGTCCGG  
.....

1-IT81  
CCGGGGTTTCCCCGGGCGGGCGGCTGCCCGCCAGAGACCGTACCCAAACCTGTCCATC  
1-IT84  
CCGGGGTTTCCCCGGGCGGGCGGCTGCCCGCCAGAGACCGTACCCAAACCTGTCCATC  
.....

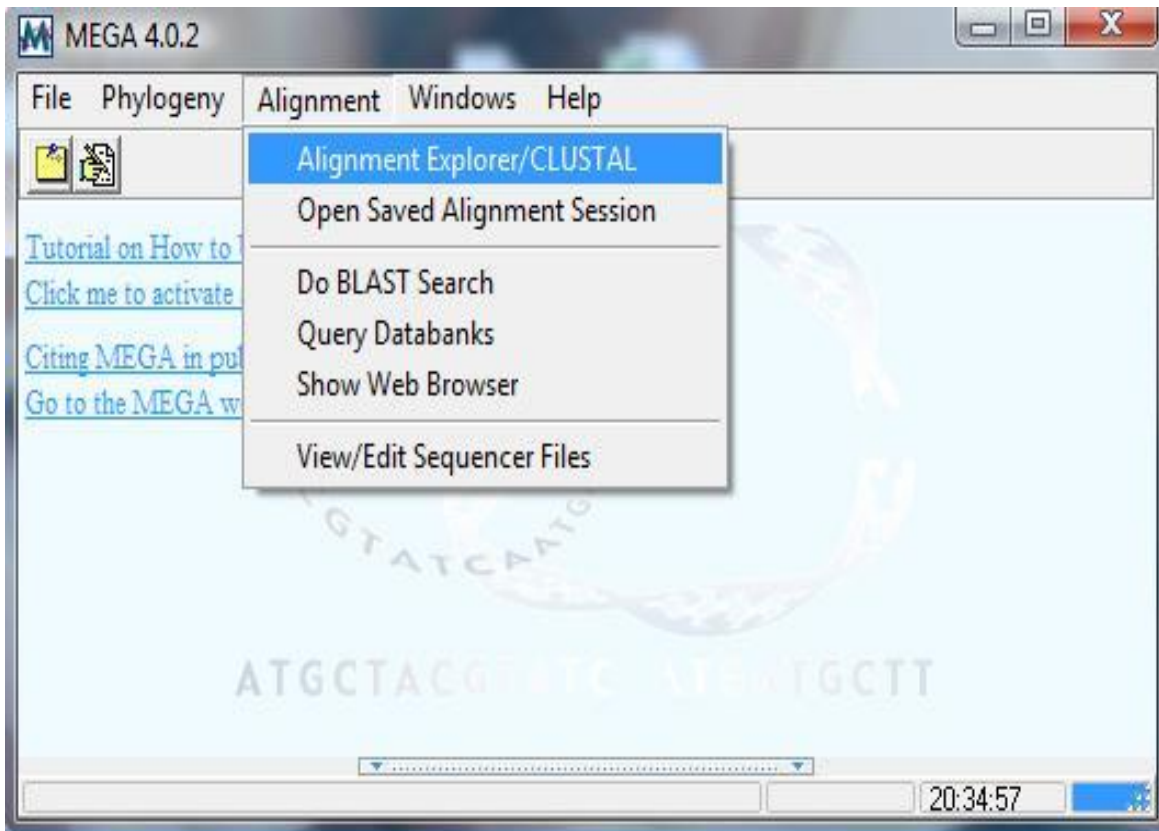
1-IT81  
AGTGTTCGTCTGAGTACCAAGTAAATAACTAAAACCTTCAACCAACGGATCTCTTGGTTC  
1-IT84  
AGTGTTCGTCTGAGTACCAAGTAAATAACTAAAACCTTCAACCAACGGATCTCTTGGTTC  
.....

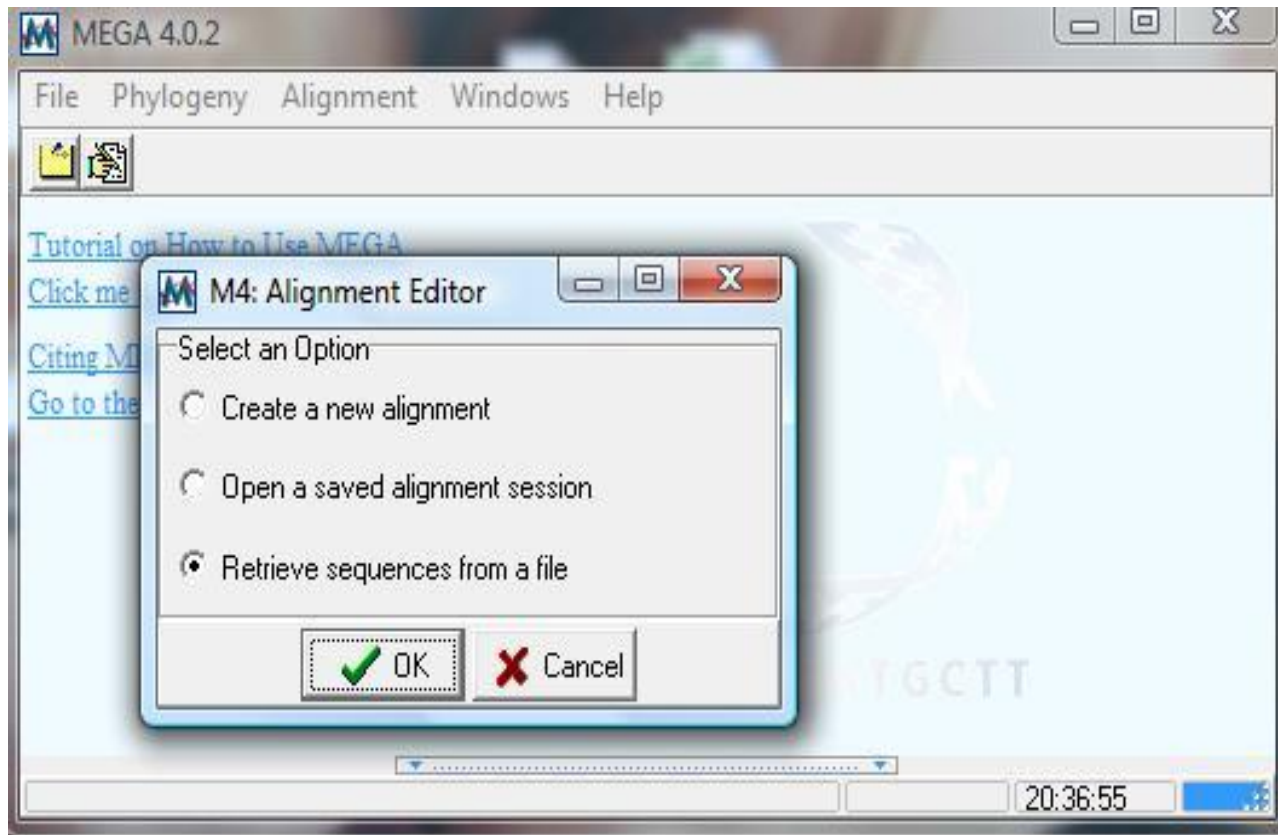
Sayfa: 1 / 2 Sözcük: 67 Türkçe (Türkiye) %69

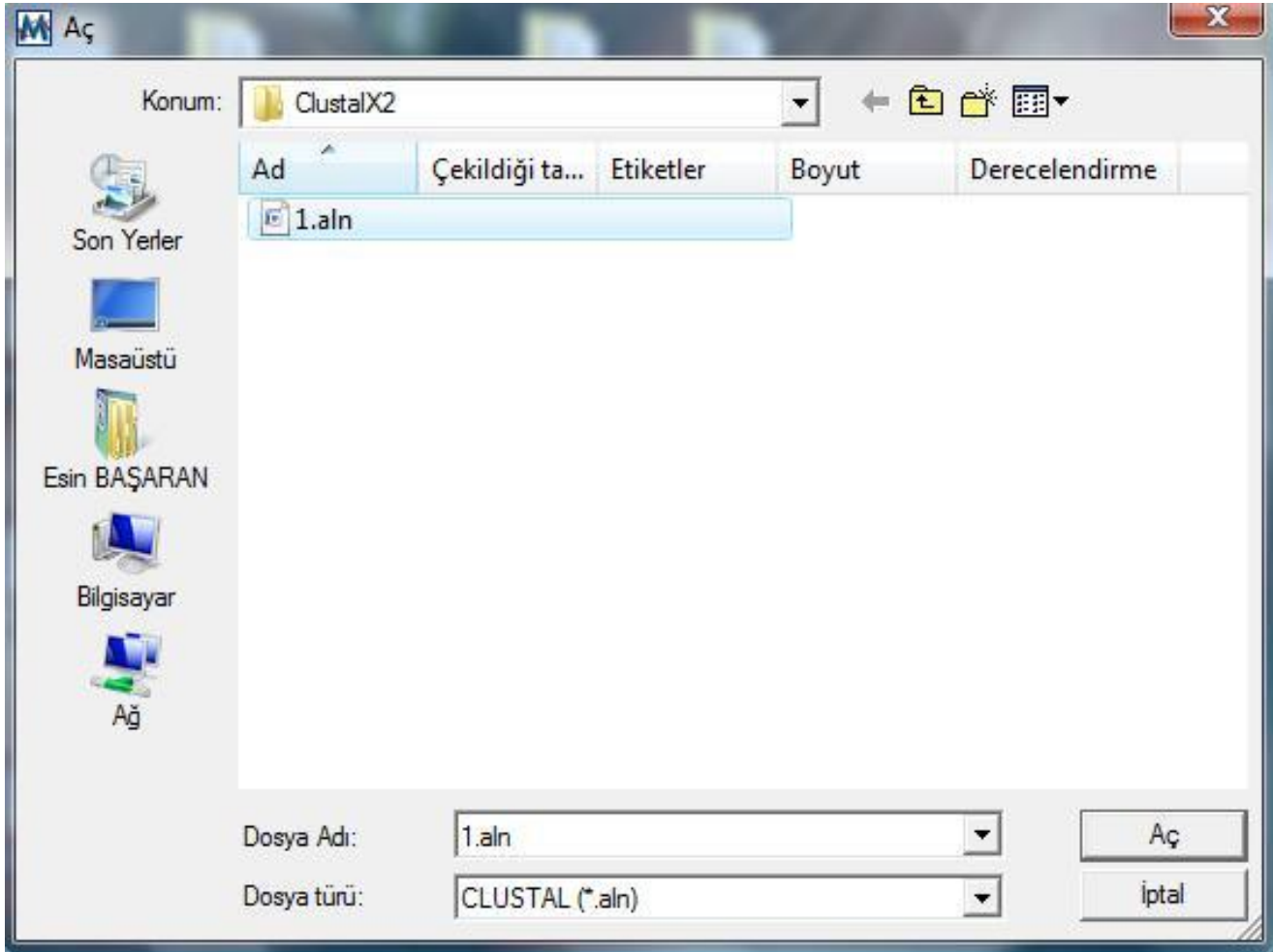














M4: Alignment Explorer (D:\Esin BASARAN\Desktop\filogenetik analiz\ClustalX2\1.aln)

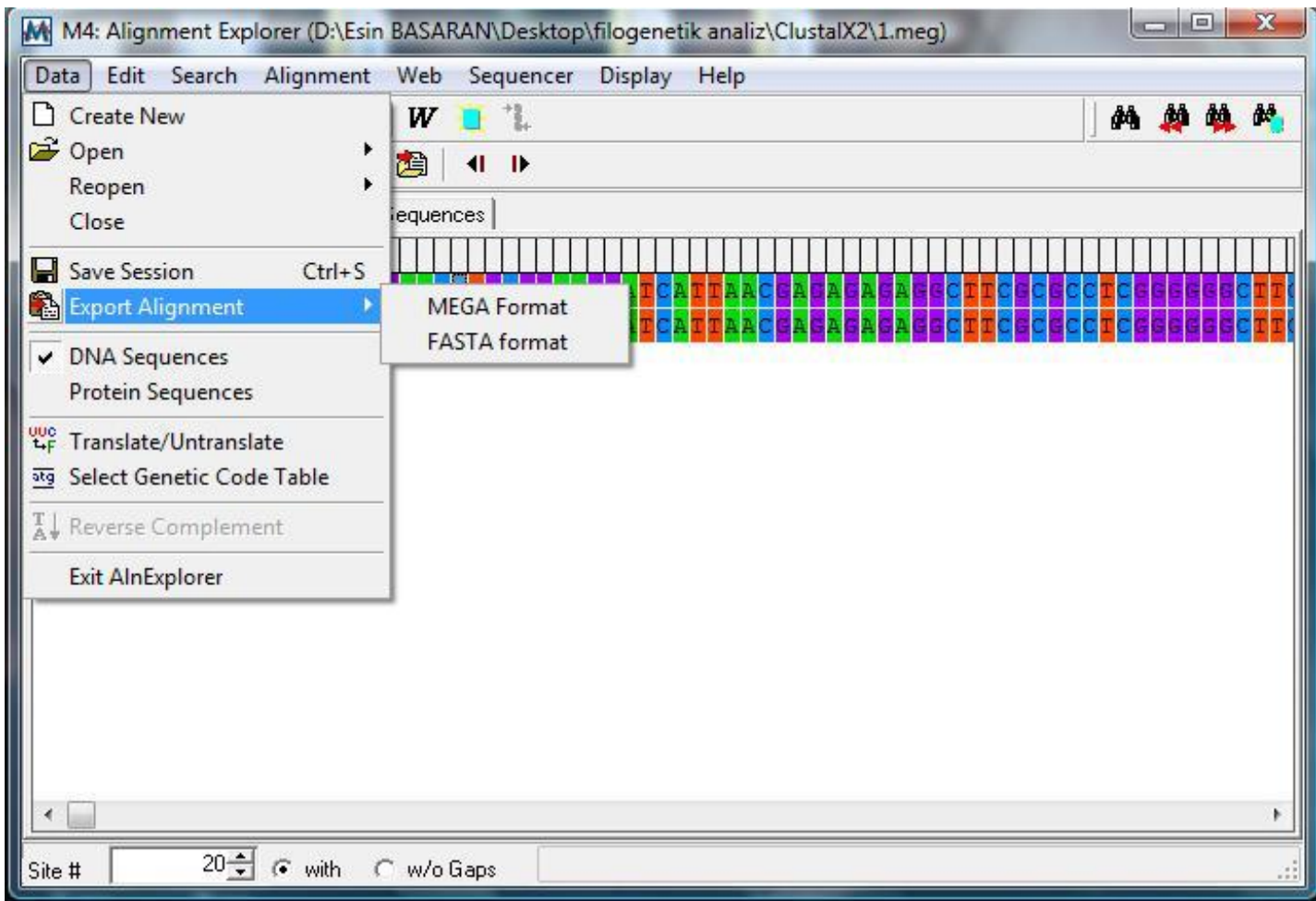
Data Edit Search Alignment Web Sequencer Display Help

DNA Sequences Translated Protein Sequences

1-ITS1	TGGTTCACCTTCGGATCAGGTAAGGATACCCGCTGAACTTAGCATCTTTAAAAGGGGGGAAAAAAT
1-ITS4	TGGT - GACCTTCGGATCAGGTAAGGACCGCG-----

Site # 19 with w/o Gaps





gen bankasına verilen diziler.txt - Not Defteri

Dosya Düzen Biçim Görünüm Yardım

>Lecidea fuscoatra HQ605926 Turkey-Ankara  
GTGAACCTGCGGAAGGATCATTAAACGAGAGAGAGGCTTCGCGCCTCGGGGGGCTTCGGCC  
CCGCCTCTTACCCCGTGCCTACTACTTTGTTGCTTTGGCGGGCTTCGGTCCCCCGAC  
GTCGGCCCCGGGTTTTCCCCGGGCCGGGCGCTGCCCGCCAGAGACCGTACCCAAACCCTG  
TCCATCAGTGTTCTGTCTGAGTACCAAGTAAATAACTAAAACTTTCAACAACGGATCTCTT  
GGTTCGGCATCGATGAAGAACGCAGCGAAATGCGATAAGTAATGTGAATTGCAGAATTC  
AGTGAATCATCGAATCTTTGAACGCACATTGCGCCCCCTGGTATTCCGGGGGGCATGCCT  
GTTTCGAGCGTCATTGCAACCCCAAGTATCGCTTGGTGTGGGCTTTCGTCCCTCGGACG  
TGCCCGAAAGTTAGTGGCGGTTCAATTGGGACCTCGAGCGCAGTCGAAATTATCATCCGCT  
CTAGTTTCGCGTTGCGGCCGGCCAGCCAACCCCCAATTATTTCAATGGT

>Lecidella patavina HQ605932 Turkey-Sivas  
GAAGGATCATTAAATGAGTGAAAGGGTTCGCGCCCTCGGTGGTTTCGTTGCTGCCAACTCT  
ATACCTGTGCTTACGTACCTTTGTTCTTTGGCGGGCCACAGGGTCCATCCC GACGCCG  
GCCCTGAACTTCCCCTCAGGCAGGCGGGGCGCCGTC AAGGGCCATCATAAATCCTTCT  
TATCAGTGACGTCCGAGCATCATCATATAAATGAATAAAAACTTTCAACAACGGATCTC  
TTGGTTCGGCATCGATGAAGAACGCAGCGAAATGCGATAAGTAATGTGAATTGCAGAAT  
TCAGTGAATCATCGAATCTTTGAACGCATATTGCGCCCCCTCGGTATTCCGGGGGGCATGC  
CTGTTTCGAGCGTCATTGCACCCCTCAAGCGGAGCTTGGTATTGGGCCCCCGCCGCTCCGG  
CGCGCCCCGAAAGTCAGTGGCGGTCCGGTGTGGCTTCGAGCGTAGTAAACAATTCTCCCGC  
TTTGGAAAGCCTCTGCTGCGGCCGG

>Lecidella carpathica HQ605933 Turkey-Konya  
ACGGGGGCGTCCCCTCGGGGGGCGATCCTCCCTATCTCCCAAACCCCTGTCTATCGA  
CCTCACACACACACTATAGTACACCTCAGAGAAGTCGTCCCTAGCGGGGTGC GCGACC  
CTAAAATGTACCAAAAACA AAAACTTTCAACAACGGATCTCTTGGTTCGGCATCGATGAA  
GAACGCAGCGAAATGCGATAAGTAATGTGAATTGCAGAATTCAGTGAACCATCGAATCTT  
TGAACGCACATTGCGCCCCCGGTATTCCGGGGGGCATGCCTGTTCGAGCGTCACAAAA  
AAGGCAATCGACCTCCGGTCC TAGCGTGAACAGCGCGAACGTCTGGGGGCTCGACGTTG



ClustalX 2.0.12

File Edit Alignment Trees Colors Quality Help

Mode: Multiple Alignment Mode Font: 10

```

macrocarpa_Austria GTAGGTGACCTGCCGAGGATCATTACGGAGAGGAGACCTTGGGTCCCAAGGGGCTTCGGCCCCACTCTTCACCCCTGTGGTACCCACCGTTGTT
hydrophila_Norway ACGGAGTGGGACCGTGGTCCCCCGGGGTCCGGCCCCGACTCTTCACCCCGTGGTACCCACCATTTGTTGCTTCGGGGGGCGTGTTCGGGCC
stictica_Austria GAAGTTTCCGTAGGTGAACCTGGGAGGATCATTAAAGAGAGAGGGGCTTCGGCCCCGGGGTTCGGCCCCGCTCTTCACCCCGTGGTACCTACCTTTGTTGCTTCGC
sp_saxosa_Austria GAACCTCCGGAGGATCATTAAAGAGAGAGGGGCTTCGGCCCCGGGGTTCGGCCCCGCTCTTCACCCCGTGGTACCTACCTTTGTTGCTTCGC
trobrunnea_Austria AAGTAAAAGTGGTAAACAAGTTTCCGTAGGTGAACCTGGGAGGATCATTAAAGAGAGAGGGGCTTCAGCCCGGGAGGTTTCGGCCCCGGCTCTTC
confluens_Austria GGATCATTAAAGAGAGAGGGGCTTCGGCCCCGGGGTTCGGCCCCGACTCTTCACCCCTGTGGTACCTACCTTTGTTGCTTCGGGGGCTTCGGG
fuscoatra_Austria TCGTAGGTGACCTGCCGAGGATCATTAAAGAGAGAGGGCTTCGGCCCTCGGGGCTTCGGCCCCGCTCTTCACCCCGTGGTACCTACCTTTGTTG
ecidea_pantherinaJ9 CCTCGGGAAGGATCATTAAAGAGAGAGGGGCTTCGGTCCCGGGGGTTCGGCCCCGCTCTTCACCCCTGTGGTACCTACCTTTGTTGCTTTGGCC
ecidea_pantherinaJ8 CCTCGGGAAGGATCATTAAAGAGAGAGGGGCTTCGGCCCCGGGGTTCGGCCCCGCTCTTCACCCCGTGTCTATCTACCTTTGTTGCTTTGGCC
ecidea_pantherinaJ6 CCTCGGGAAGGATCATTAAAGAGAGAGGGGCTTCGGCCCCGGGGTTCGGCCCCGCTCTTCACCCCGTGTCTATCTACCTTTGTTGCTTTGGCC
Lecidea_plana904 AAGTAAAAGTGGTAAACAAGTTTCCGTAGGTGAACCTGGGAGGATCATTAAAGAGAGAGGGGCTTCAGCCCGGGAGGTTTCGGCCCCGGGCACTC
Lecidea_plana903 AAGTAAAAGTGGTAAACAAGTTTCCGTAGGTGAACCTGGGAGGATCATTAAAGAGAGAGGGGCTTCAGCCCGGGGCTTCAGCCCGGCAACTCT
tessellata_Austria CGTAGGTGACCTGCCGAGGATCATTAAAGAGTAAAGGGCTTCGGCCCCGGGGGCTTCGGCCCCGACTCTTCACCCCTGTGGTACCTACCTCTGTT
dea_cancriformis842 TAGAGGAAGTAAAAGTGGTAAACAAGTTTCCGTAGGTGAACCTGGGAGGATCATTAAAGAGAGAGGGGCTTCGGTTCGGGGGCTTCGGCCCCG
dea_cancriformis841 TAGAGGAAGTAAAAGTGGTAAACAAGTTTCCGTAGGTGAACCTGGGAGGATCATTAAAGAGAGAGGGGCTTCGGTTCGGGGGCTTCGGCCCCG
ecidea_andersonii684 GAACCTCGGGAAGGATCATTAAAGAGAGAGGGGCTTCAGCCCGGGGGCTTCGGCCCCGCTCTTCACCCCGTGGTACCTACCTTTGTTGCTTTG
ecidea_andersonii683 AAGTAAAAGTGGTAAACAAGTTTCCGTAGGTGAACCTGGGAGGATCATTAAAGAGAGAGGGGCTTCAGCCCGGGGCTTCAGCCCGGGGCTTC
ecidea_laboriosa902 ACCTCGGGAAGGATCATTAAAGAGAGAGGGGCTTCAGCCCGGGGGCTTCGGCCCTGCCTCTTCACCCCGTGGTACCTACCTTTGTTGCTTTGG
ecidea_laboriosa901 GTAGGTGAACCTCGGGAAGGATCATTAAAGAGAGAGGGGCTTCAGCCCGGGGGCTTCGGCCCCGCTCTTCACCCCGTGGTACCTACCTTTGTT
a_fuscoatra_Ankara GTGAACCTCGGGAAGGATCATTAAAGAGAGAGGGGCTTCGGCCCTCGGGGCTTCGGCCCCGCTCTTCACCCCGTGGTACCTACCTTTGTTG
ea_fuscoatra_Konya TAGAGGAAGTAAAAGTGGTAAACAAGTTTCCGTAGGTGAACCTGGGAGGATCATTAAAGAGAGAGGGGCTTCGGCCCCGGGGTTCGGCCCCG

```

CLUSTAL-Alignment file created [D:/Esin BASARAN/Desktop/filogenetik analiz/ClustalX2/dizilerin hepsi.aln]

ClustalX 2.0.12

File Edit Alignment Trees Colors Quality Help

Mode: Multiple Alignment Mode Font: 10

The screenshot displays a multiple sequence alignment in ClustalX 2.0.12. The alignment is color-coded by nucleotide: Adenine (A) in red, Cytosine (C) in green, Guanine (G) in blue, and Thymine (T) in yellow. The sequences are listed on the left, including *Porpidia macrocarpa*, *Porpidia crustulata*, *Porpidia hydrophila*, *Lecidea pant*, *unnea subsp. saxosa*, *Lecidea atrobrunnea*, *nea subsp. stictica*, *Lecidea andex*, *Lecidea labc*, *Lecidea confluens*, *Lecidea fuscoatra*, and *Lecidea fuscoatra* (with two different accessions). The alignment shows conserved regions marked with asterisks above the sequences. A scale bar at the bottom indicates positions 160, 27, 280, 290, 300, 310, 320, 330, 34, and 350.

CLUSTAL-Alignment file created [D:/Esin BASARAN/Desktop/filogenetik analiz/ClustalX2/Lecidea .aln]







M4.1 (Beta 3): Alignment Explorer (D:\Esin BASARAN\Desktop\filogenetik analiz\ClustalX2\diziler genba...)

Data Edit Search Alignment Web Sequencer Display Help

Create New  
 Open  
 Reopen  
 Close

Phylogenetic Analysis

Save Session Ctrl+S

Export Alignment  
 MEGA Format  
 FASTA format

DNA Sequences  
 Protein Sequences

Translate/Untranslate

Select Genetic Code Table

Reverse Complement

Exit AlnExplorer

sequences

\*\*\*\*\*

LC1Lecidea	A	T	G	T	G	A	A	T	T	G	C	A	G	A	A	T	T	C	A	T	C	G	A	A	T	C	T	T	T	G	A	A	C	G	C	A	C	A	T	T	G	C	G	C	C	C	C	T	G	G	T	A	T	T
Lecidea can	A	T	G	T	G	A	A	T	T	G	C	A	G	A	A	T	T	C	A	T	C	G	A	A	T	C	T	T	T	G	A	A	C	G	C	A	C	A	T	T	G	C	G	C	C	C	C	T	G	G	T	A	T	T
2Lecidella	A	T	G	T	G	A	A	T	T	G	C	A	G	A	A	T	T	C	A	T	C	G	A	A	T	C	T	T	T	G	A	A	C	G	C	A	C	A	T	T	G	C	G	C	C	C	C	T	G	G	T	A	T	T
LD1Lecidell	A	T	G	T	G	A	A	T	T	G	C	A	G	A	A	T	T	C	A	T	C	G	A	A	T	C	T	T	T	G	A	A	C	G	C	A	C	A	T	T	G	C	G	C	C	C	C	T	G	G	T	A	T	T
19Lecidella	A	T	G	T	G	A	A	T	T	G	C	A	G	A	A	T	T	C	A	T	C	G	A	A	T	C	T	T	T	G	A	A	C	G	C	A	C	A	T	T	G	C	G	C	C	C	C	T	G	G	T	A	T	T
23Lecidella	A	T	G	T	G	A	A	T	T	G	C	A	G	A	A	T	T	C	A	T	C	G	A	A	T	C	T	T	T	G	A	A	C	G	C	A	C	A	T	T	G	C	G	C	C	C	C	T	G	G	T	A	T	T
LD3Lecidell	A	T	G	T	G	A	A	T	T	G	C	A	G	A	A	T	T	C	A	T	C	G	A	A	T	C	T	T	T	G	A	A	C	G	C	A	C	A	T	T	G	C	G	C	C	C	C	T	G	G	T	A	T	T
T.D5Lecidell	A	T	G	T	G	A	A	T	T	G	C	A	G	A	A	T	T	C	A	T	C	G	A	A	T	C	T	T	T	G	A	A	C	G	C	A	C	A	T	T	G	C	G	C	C	C	C	T	G	G	T	A	T	T

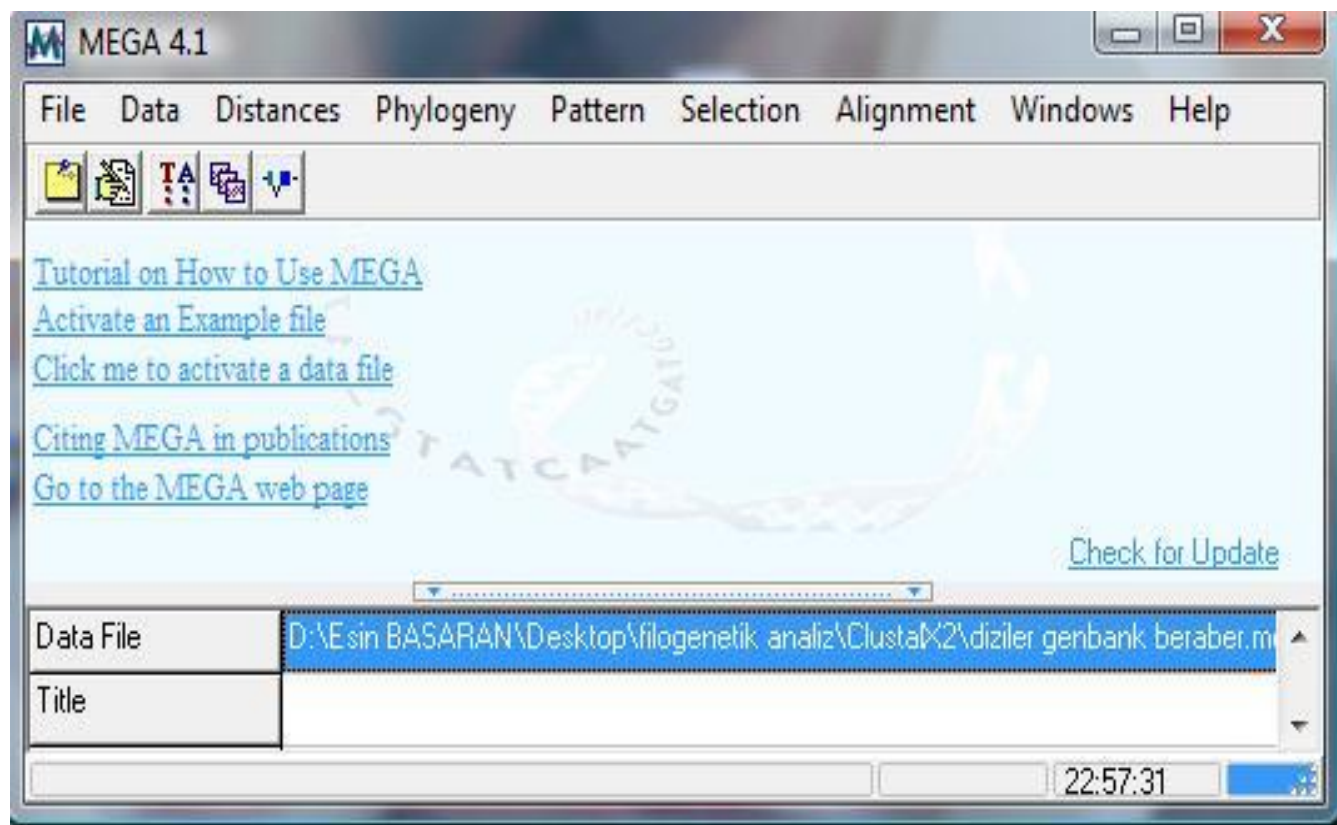
Site # 636 with w/o Gaps

M4.1 (Beta 3): View Sequence Data

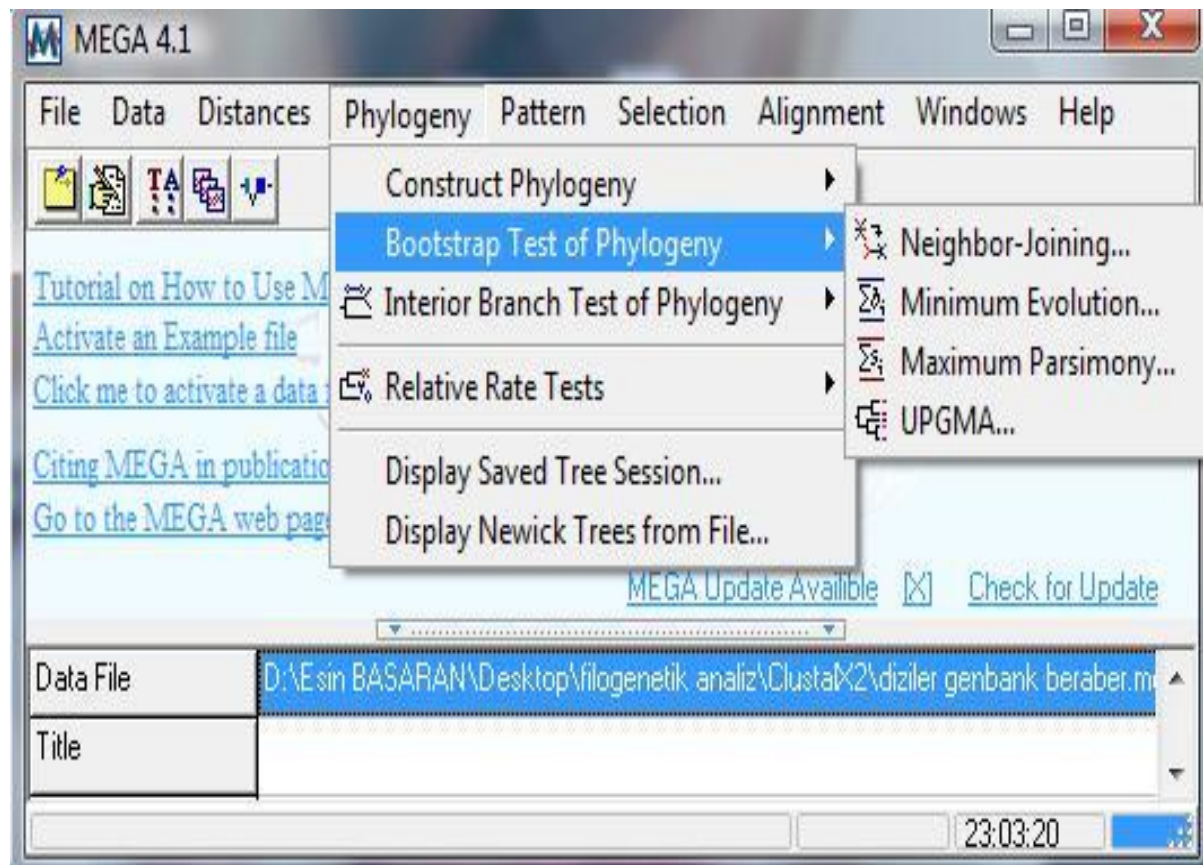
Data Display Highlight Statistics Help

	-	-	-	-	-	-	-	-	-	-	-	-	-	-	-	-	-	-	-	-	-	-				
<input checked="" type="checkbox"/> 13. Lecidea cancriformis	A	G	G	A	A	G	T	A	A	A	A	G	T	C	G	T	A	A	C	A	A	G	G	T	T	T
<input checked="" type="checkbox"/> 14. 2Lecidella patavina Grn	-	-	-	-	-	-	-	-	-	-	-	-	-	-	-	-	-	-	-	-	-	-	-	-	-	-
<input checked="" type="checkbox"/> 15. LD1Lecidella elaeochroma Kore	T	T	G	C	A	A	A	G	G	G	C	T	G	A	A	A	G	A	C	T	A	G	T	-	-	T
<input checked="" type="checkbox"/> 16. 19Lecidella elaeochroma Trabzo	-	-	-	-	-	-	-	-	-	-	-	-	-	-	-	-	-	-	-	T	A	G	T	-	-	T
<input checked="" type="checkbox"/> 17. 23Lecidella elaeochroma Bakrd	-	-	-	-	-	-	-	-	-	-	-	-	-	-	-	-	-	-	-	-	-	-	-	-	-	-
<input checked="" type="checkbox"/> 18. LD3Lecidella elaeochroma Avustu	-	-	-	-	-	-	-	-	-	-	-	-	-	-	-	-	-	-	-	-	-	-	-	-	-	-
<input checked="" type="checkbox"/> 19. LD5Lecidella meiococca Norve	-	-	-	-	-	-	-	-	-	-	-	-	-	-	-	-	-	-	-	-	-	-	-	-	-	-
<input checked="" type="checkbox"/> 20. 8Lecidella patavina Aladalar	G	G	C	C	C	C	A	G	C	C	T	T	C	A	T	C	G	G	C	T	G	G	T	G	A	C
<input checked="" type="checkbox"/> 21. LD2Lecidella carpathica Kore	G	G	C	C	C	C	A	G	C	C	T	G	C	A	T	C	G	G	C	T	G	G	T	G	A	C
<input checked="" type="checkbox"/> 22. LD4Lecidella carpathica Avustu	-	-	-	-	-	-	-	-	-	-	-	-	-	-	-	-	-	-	-	-	-	-	-	-	-	-
<input checked="" type="checkbox"/> 23. 22Lecidella stigmatea Aladala	-	-	-	-	-	-	-	-	-	-	-	-	-	-	-	-	-	-	-	A	A	G	G	T	T	T
<input checked="" type="checkbox"/> 24. 12Lecidella stigmatea Rize	-	-	-	-	-	-	-	-	-	-	-	-	-	-	-	-	-	-	-	-	-	-	-	-	-	-
<input checked="" type="checkbox"/> 25. Lecidea rubrocastanea	-	-	-	-	-	-	-	-	-	-	-	-	-	-	-	-	-	-	-	-	-	-	-	-	-	-
<input checked="" type="checkbox"/> 26. RP3Rhizocarpon lavatum Trabzon	-	-	-	-	-	-	-	-	-	-	-	-	-	-	-	-	-	-	-	-	-	-	-	-	-	-
<input checked="" type="checkbox"/> 27. ...																										

23/984      Highlighted: None      Data







M4.1 (Beta 3): Analysis Preferences

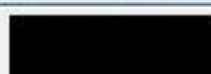
Option	Selection
Data Type	Nucleotide (Coding)
Analysis	Phylogeny reconstruction
Tree Inference	
->Method	Neighbor-Joining
->Phylogeny Test and options	Bootstrap (500 replicates; seed=21453) <input checked="" type="checkbox"/>
Include Sites	
->Gaps/Missing Data	Complete Deletion <input checked="" type="checkbox"/>
->Codon Positions	1st+2nd+3rd+Noncoding <input checked="" type="checkbox"/>
Substitution Model	
->Model	Nucleotide: Maximum Composite Likelihood <input checked="" type="checkbox"/>
->Substitutions to Include	d: Transitions + Transversions <input type="checkbox"/>
->Pattern among Lineages	Same (Homogeneous) <input checked="" type="checkbox"/>
->Rates among sites	Uniform rates <input checked="" type="checkbox"/>

Compute  Cancel  Help



### M4.1 (Beta 3): Progress

Progress



32%

Details ▾

 Stop

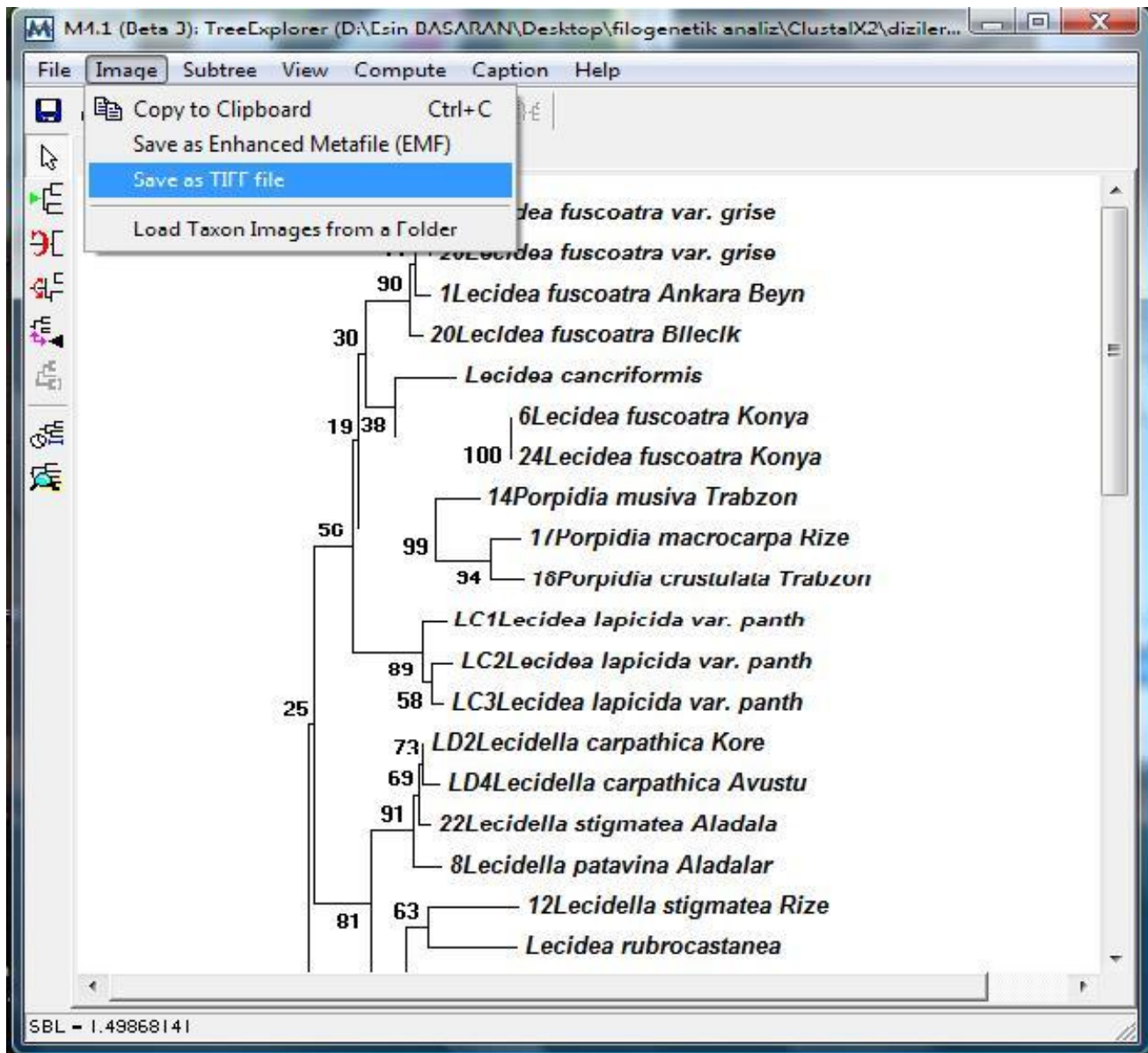
#### Run Status

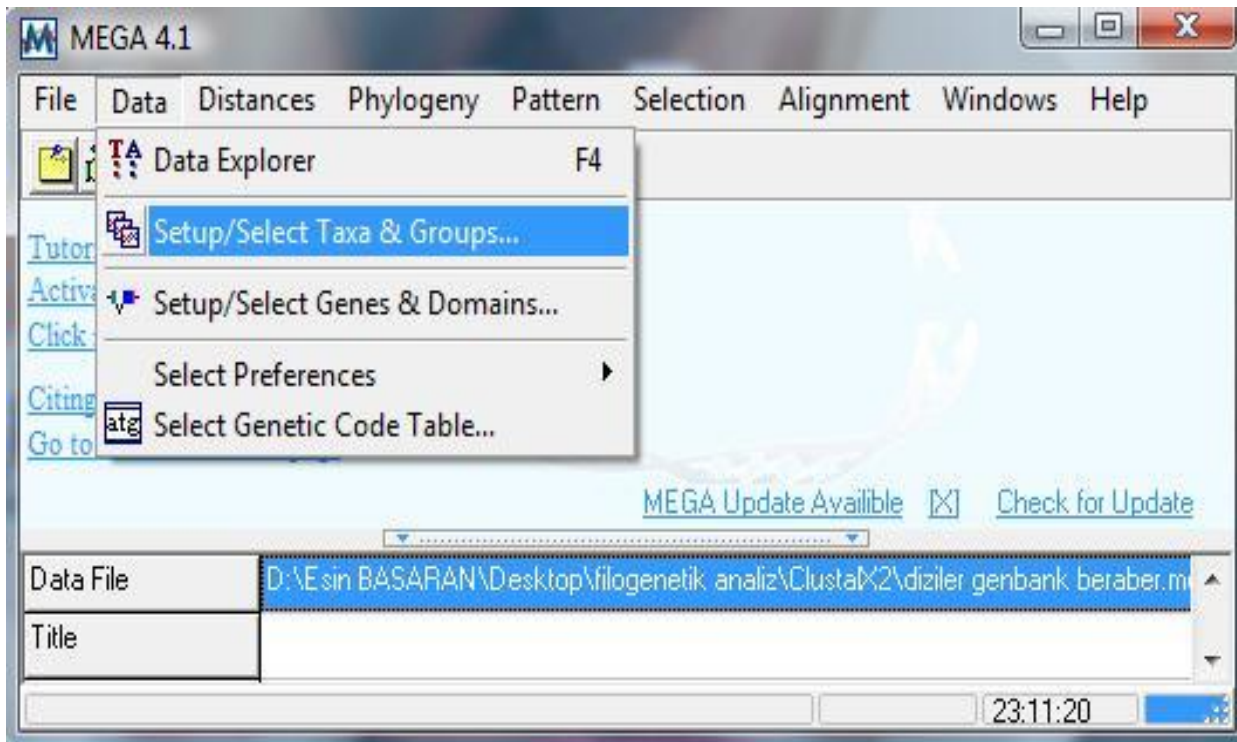
Start time	08.02.2011 23:04:40
Status	Conducting Bootstrap Test

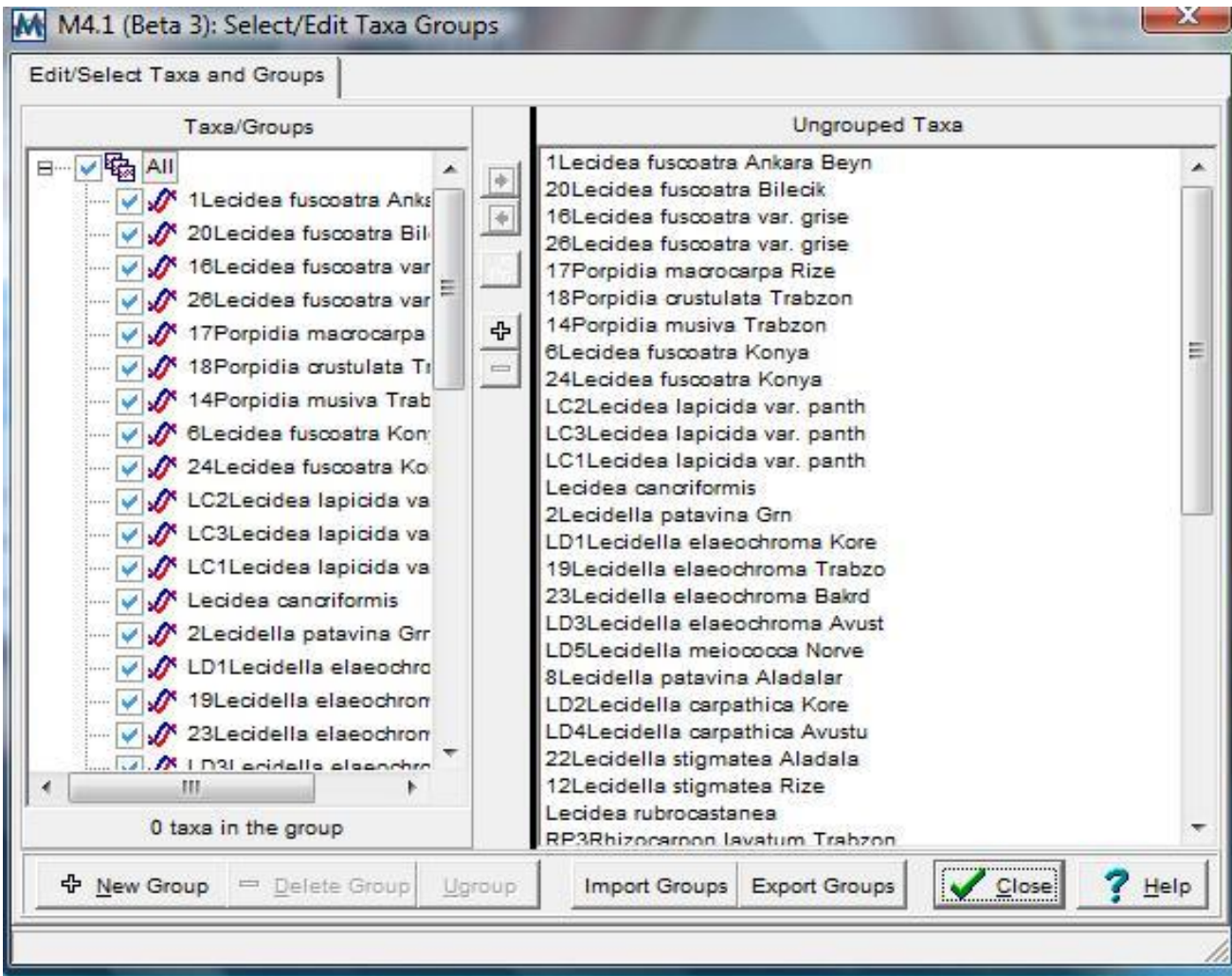
#### Analysis Options

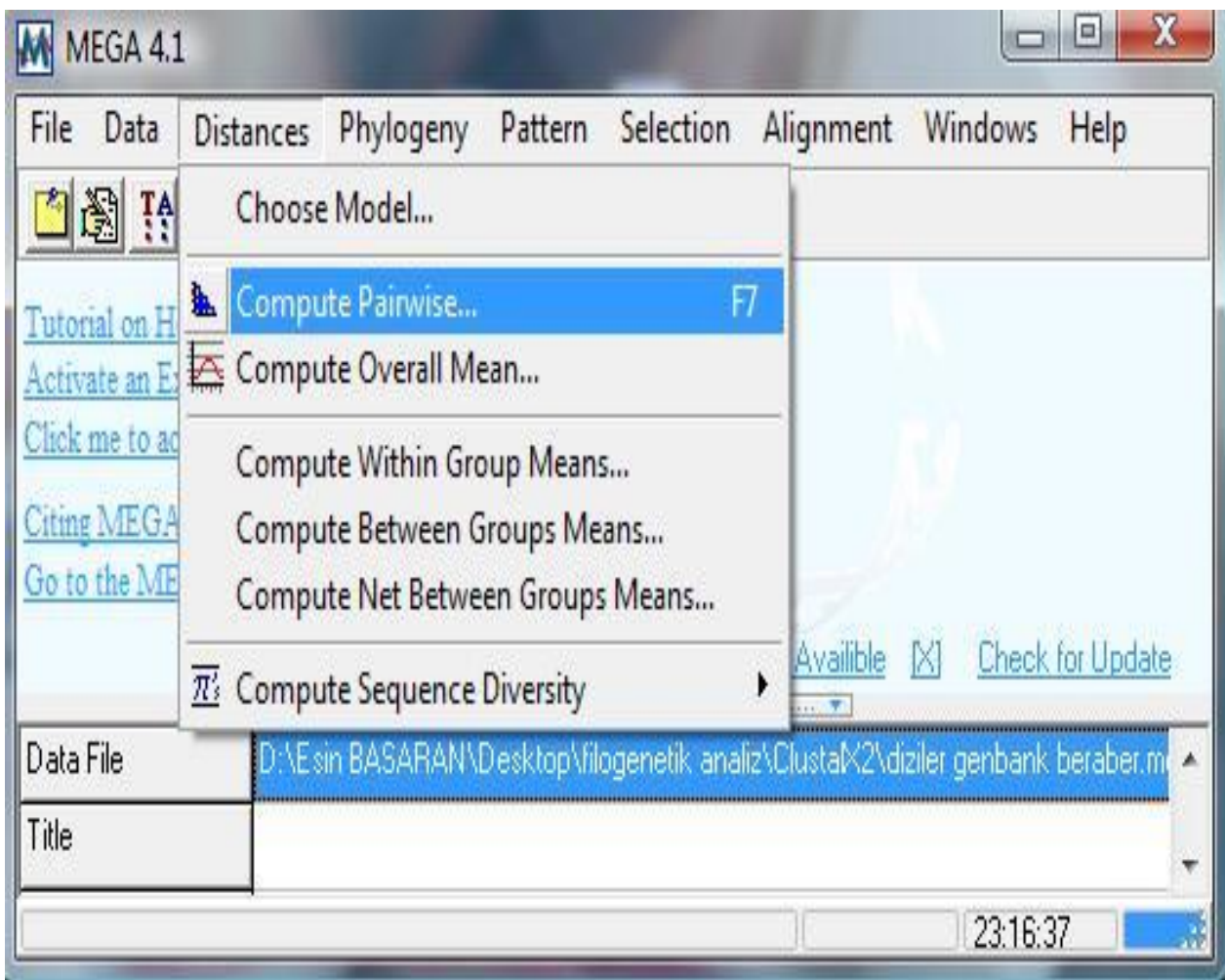
No. of Taxa : 47

Data File : D:\Esin BASARAN\Desktop  
\filogenetik analiz\ClustalX2\diziler











M4.1 (Beta 3): Pairwise Distances (D:\Esin BASARAN\Desktop\filogenetik analiz\ClustalX2\diziler g...)

File Display Average Caption Help

(A,B) 0.0 0.00 XL CSV MELR TXT Cap... ten

	1	2	3	4	5	6	7	8	9	10
1. 1Lecidea fuscoatra Ankara Beyn										
2. 20Lecidea fuscoatra Bilecik	0.009									
3. 16Lecidea fuscoatra var. grise	0.009	0.009								
4. 26Lecidea fuscoatra var. grise	0.009	0.009	0.000							
5. 17Porpidia macrocarpa Rize	0.069	0.059	0.069	0.069						
6. 18Porpidia crustulata Trabzon	0.078	0.069	0.078	0.078	0.018					
7. 14Porpidia musiva Trabzon	0.059	0.050	0.059	0.059	0.036	0.036				
8. 6Lecidea fuscoatra Konya	0.049	0.040	0.049	0.049	0.069	0.088	0.068			
9. 24Lecidea fuscoatra Konya	0.049	0.040	0.049	0.049	0.069	0.088	0.068	0.000		
10. LC2Lecidea lapicida var. panth	0.059	0.059	0.059	0.059	0.079	0.079	0.069	0.078	0.078	
11. LC3Lecidea lapicida var. panth	0.059	0.059	0.059	0.059	0.074	0.074	0.064	0.078	0.078	0.009
12. LC1Lecidea lapicida var. panth	0.059	0.049	0.059	0.059	0.064	0.064	0.054	0.068	0.068	0.018
13. Lecidea cancriformis	0.058	0.049	0.058	0.058	0.073	0.073	0.064	0.049	0.049	0.049
14. 2Lecidella patavina Grn	0.103	0.098	0.103	0.103	0.130	0.120	0.104	0.133	0.133	0.109
15. LD1Lecidella elaeochroma Kore	0.068	0.068	0.068	0.068	0.104	0.099	0.094	0.102	0.102	0.084
16. 19Lecidella elaeochroma Trabzo	0.068	0.068	0.068	0.068	0.104	0.099	0.094	0.102	0.102	0.084
17. 23Lecidella elaeochroma Bakrd	0.078	0.078	0.078	0.078	0.109	0.099	0.094	0.113	0.113	0.094

d [2,1] (20Lecidea fuscoatra Bilecik-1Lecidea fuscoatra Ankara Beyn) / Nucleotide: Maximum Composite Likelihood