

# JUKSTAGLOMERÜLER KOMPLEKS

- \*MAKULA DENSE
- \*JUKSTAGLOMERÜLER  
HÜCRELER
- \*EKSTRAKLOMERÜLER  
MEZANGİYAL HÜCRELER

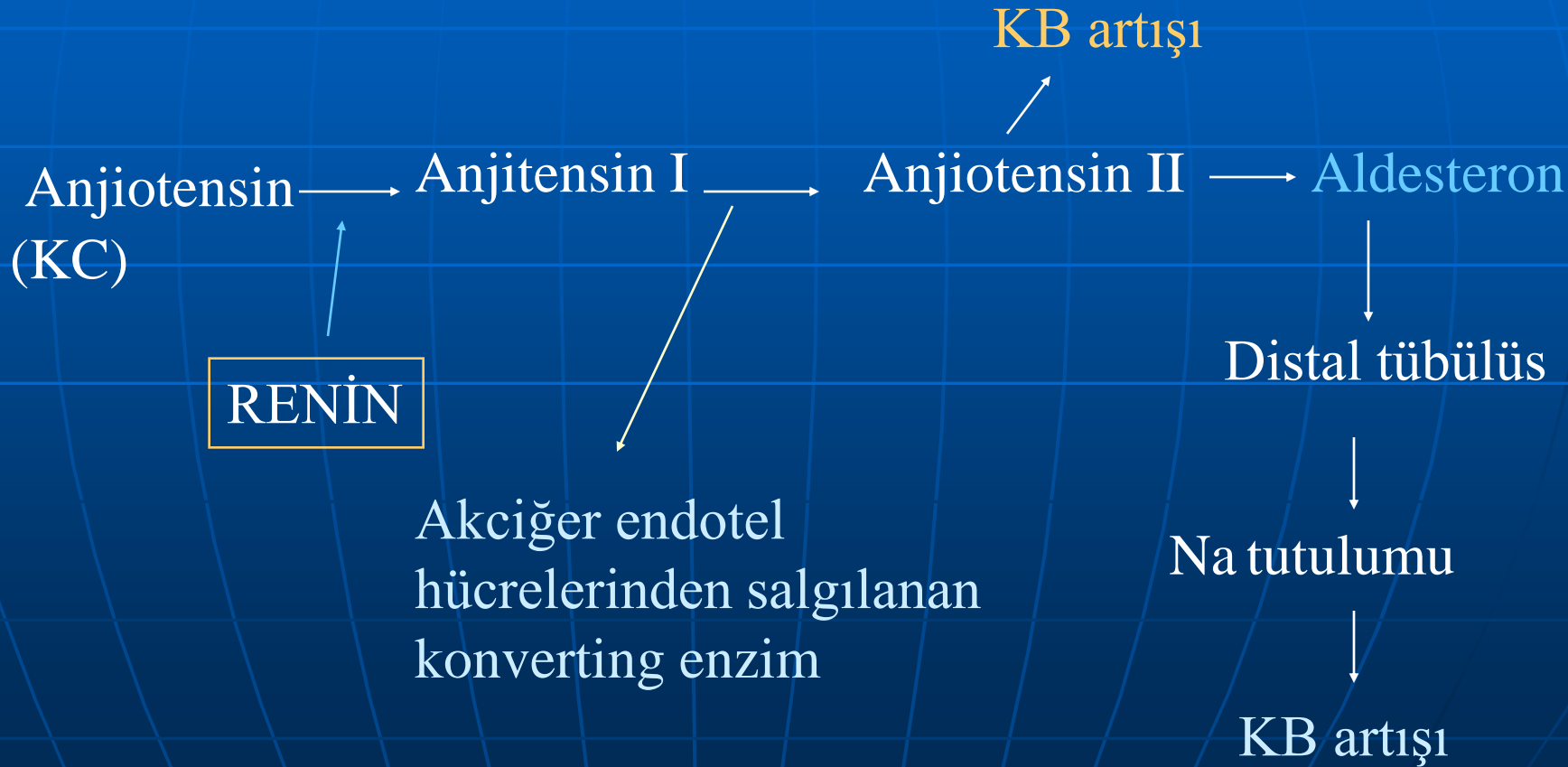
# MAKULA DENSA



# JUKSTAGLOMERÜL HÜCRELERİ

- RENİN SALGILAR
- PAS (+) BOYANIR
- Modifiye düz kas hücreleridir

# RENİN (ASİT PROTEAZ)



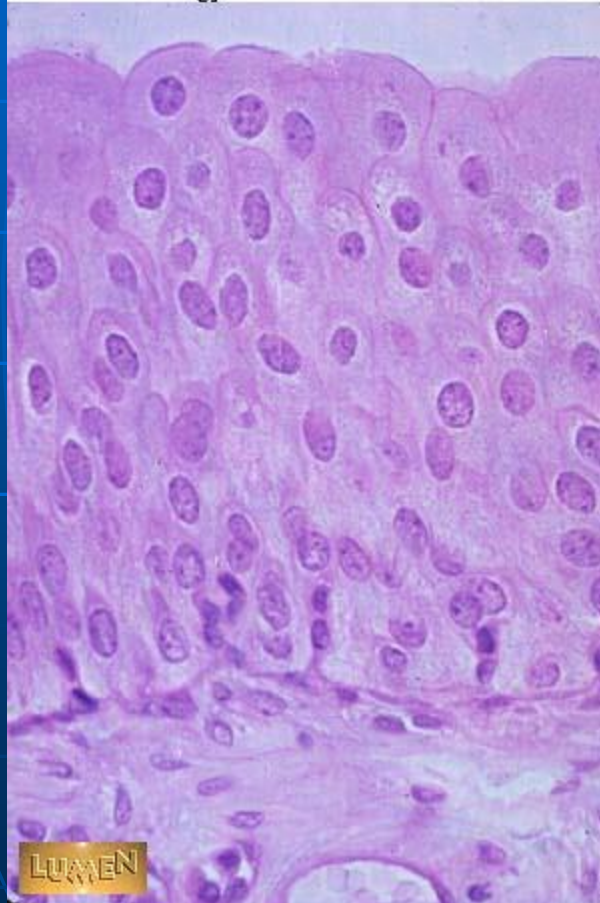
# BÖBREK LOBÜLÜ

- 2 Arteria Interlobularis + ortada medulla uzantısı
- Fizyolojik açıdan önemlidir, toplama borusu ve onun direne ettiği nefronları içeren renal sekretuar birimdir

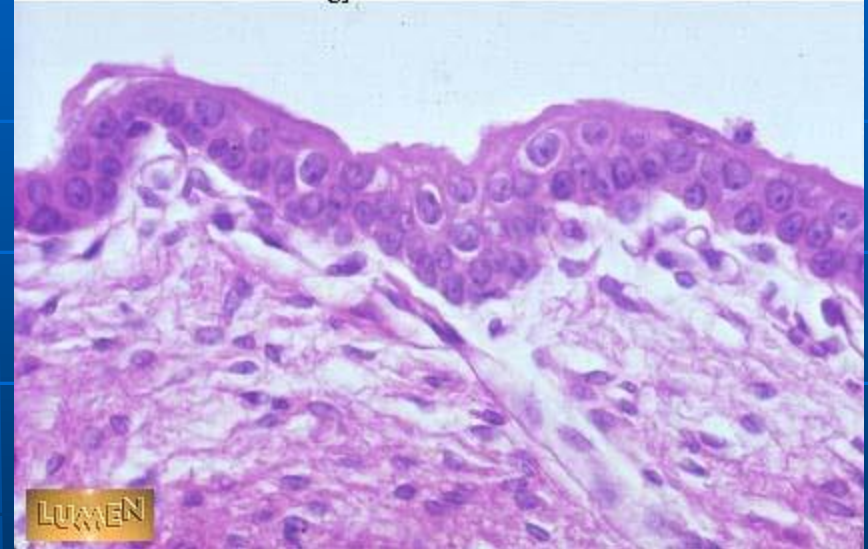
- Erişkinde iki böbreğe gelen kan miktarı  
1.200ml./dk
- 120ml/dk ultrafiltrat oluşur
- 1ml/dk idrar oluşur

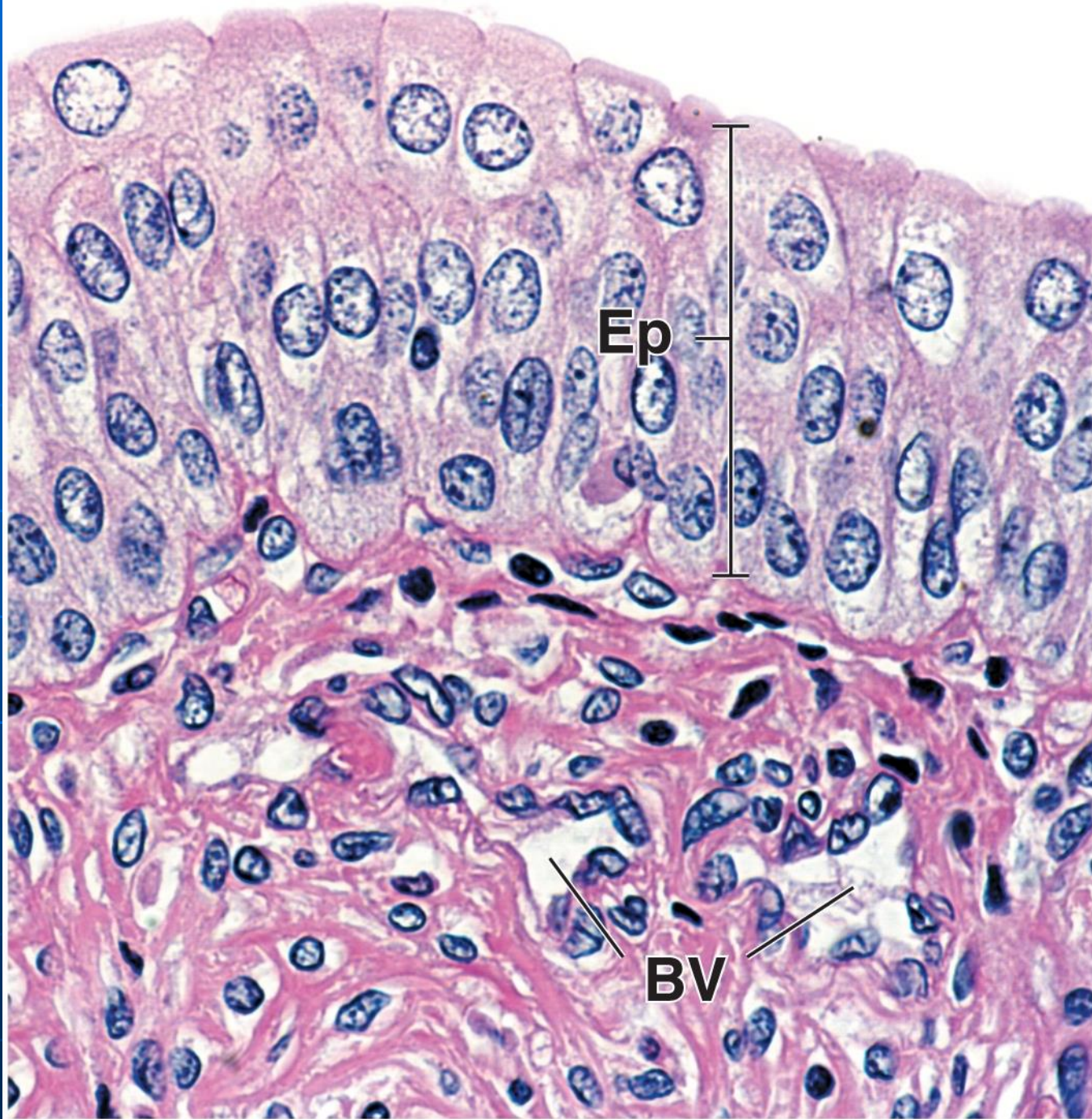
# ÜROEPİTELYUM

Histology Lab Part 16: Slide 43



Histology Lab Part 16: Slide 44



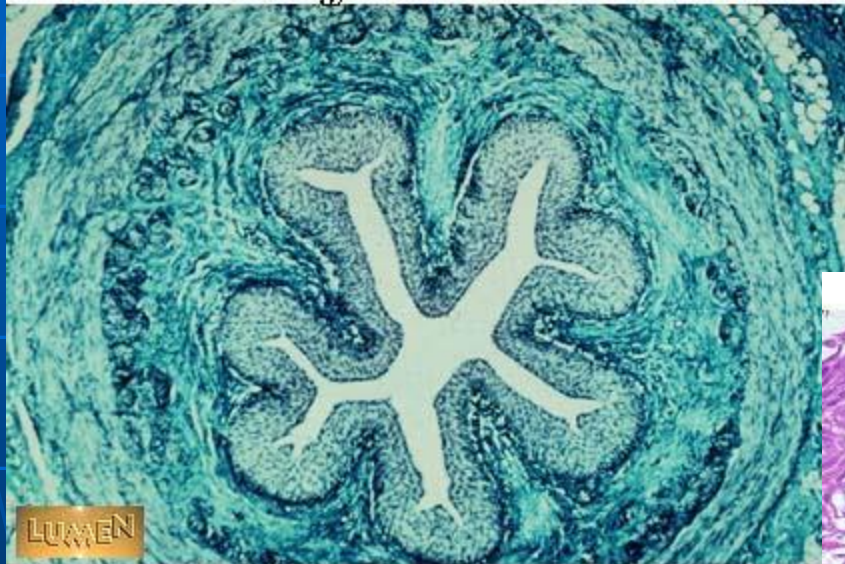


# ÜRETER



# ÜRETER

Histology Lab Part 16: Slide 41



Histology Lab Part 16: Slide 42

