



T.C.
Ankara Üniversitesi
Mühendislik Fakültesi
Jeoloji Mühendisliği Bölümü



JEM 227 GEMOLOJİ

Dr. Öğr. Üyesi Kıymet DENİZ

2. Hafta

2020-2021 Güz Dönemi

Bu ders notlarının hazırlanmasında Mefail Yenyol'un sunumlarından ve Mineraloji kitabından yararlanılmıştır.

KALSEDON

PROFILE



Hexagonal



7



2.7



None



Uneven



White



Waxy to dull

Kimyasal Formülü

SiO_2

VARIANTS



Chrysoprase Chalcedony colored green by nickel



Carnelian A piece of red-orange chalcedony

waxy luster

botryoidal habit

Pink chalcedony

This form of botryoidal pink chalcedony is sometimes referred to as a "chalcedony rose."

Bonewitz, R. L. (2012)

AGAT

PROFILE



Hexagonal



7



2.7



None



Conchoidal



White



Vitreous to waxy

concentric
bands of agate

shapes of bands
follow outline
of cavity

color variation
determined by
impurities present

Kimyasal Formülü

SiO_2

Brazilian agate

This cross section of a Brazilian agate nodule shows the concentric layering typical of agate.

Bonewitz, R. L. (2012)

JASPER

PROFILE



Hexagonal



7



2.7



None



Conchoidal



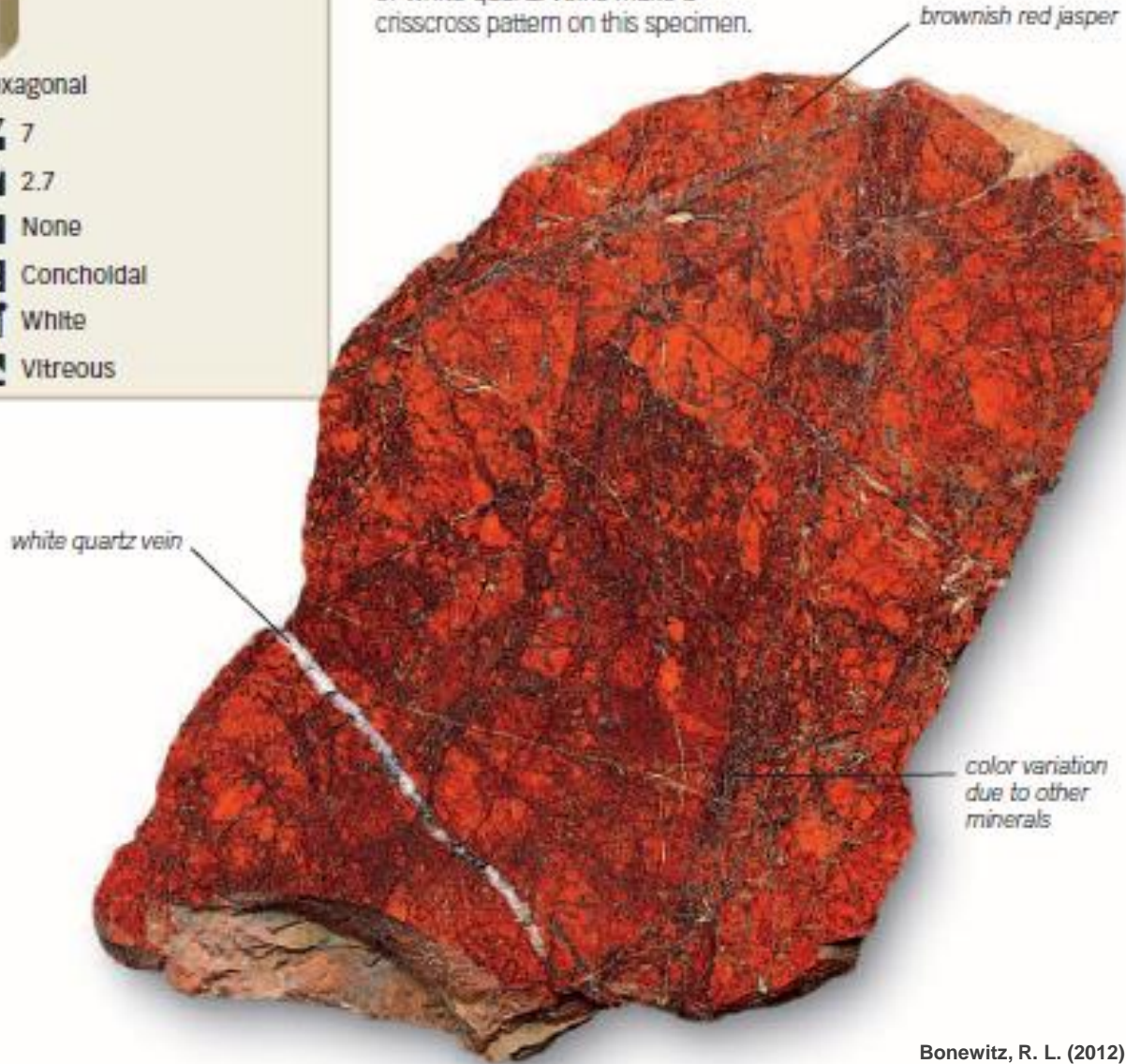
White



Vitreous

Color variation

Hematite colors this example of jasper brownish red. Threads of white quartz veins make a crisscross pattern on this specimen.



Bonewitz, R. L. (2012)

Kimyasal Formülü

SiO_2

OPAL

PROFILE

Crystal system Amorphous

5-6

1.9-2.3

None

Conchoidal

White

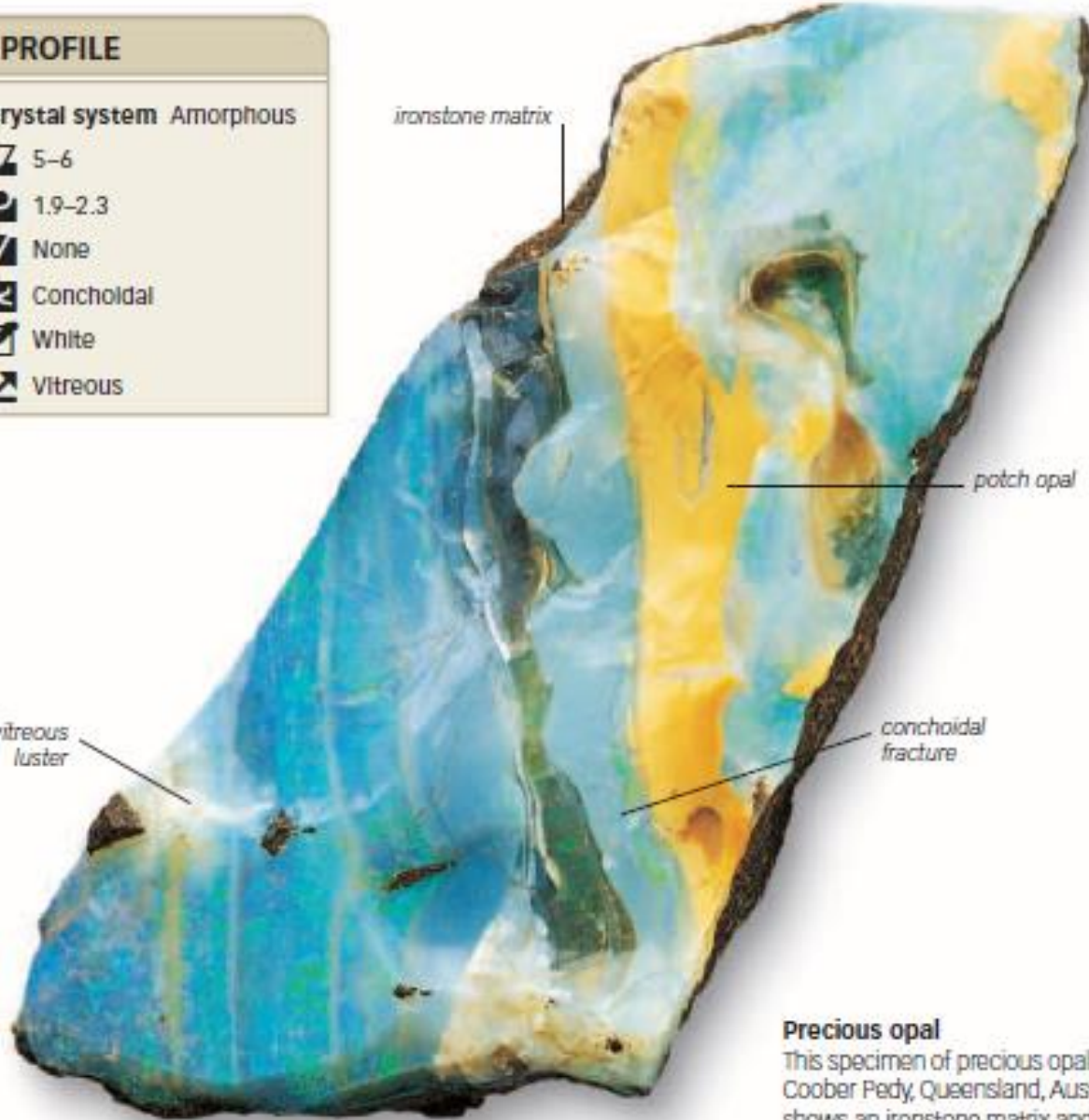
Vitreous

ironstone matrix

patch opal

conchoidal fracture

vitreous luster



Precious opal

This specimen of precious opal from Coober Pedy, Queensland, Australia, shows an ironstone matrix and streaks of yellowish patch opal.

Kimyasal Formülü

$\text{SiO}_2 \cdot n\text{H}_2\text{O}$



Victorian ring

Some cut opal dries and cracks with age and needs to be kept moist. The opal in this ring is well preserved.

Referanslar

Deniz, K. and Kadiođlu, Y. K., 2015. FTIR, CRS and LA-ICP-MS Characteristics of Different Coloured Fluorites from Central Anatolia (CAF), Turkey. 12th International Congress for Applied Mineralogy (ICAM2015), İstanbul-Türkiye.

Kabakcı, B., Deniz, K., Kılıç, C.Ö., Güllü, B., 2012. Fluorit Oluşumunda Alkali Magmatik Kayaların Önemi: İç Anadolu'dan Örnekler, Uluslararası Katılımlı V. Ulusal Jeokimya Sempozyumu, Denizli-Türkiye.

Kadiođlu, Y. K., Dilek, Y. and Foland, K. A., 2006. Slab break-off and syncollisional origin of the Late Cretaceous magmatism in the Central Anatolian crystalline kompleks, Geological Society of America, special paper 409, 381-415.

Kadiođlu, Y. K. ve Deniz, K. 2015. Orta Anadolu Fluoritlerinin (OAF) Kökeni: NTE ve Sr İzotop Jeokimyası, Türkiye. Dođu Anadolu Jeoloji Sempozyumu, Van-Türkiye.

Şaşmaz, A. and Yavuz, F., 2007. REE geochemistry and fluid-inclusion studies of fluorite deposits from the Yaylagözü area (Yıldızeli-Sivas) in Central Turkey, N. Jb. Miner. Abh., 183, 2, 215–226.

İnternet adresleri:

- ➔ <https://crystal-cure.com>
- ➔ <http://www.old-earth.com/>
- ➔ <http://www.healthstones.com>
- ➔ <https://www.google.com.tr>
- ➔ <http://www.ebay.co.uk/>
- ➔ <http://www.edelsteine.de>
- ➔ <http://www.ecrater.com>
- ➔ <https://www.etsy.com>
- ➔ <https://www.tumblr.com>
- ➔ <http://www.dhgate.com>
- ➔ <https://www.etsy.com/>
- ➔ <http://www.amazon.com>