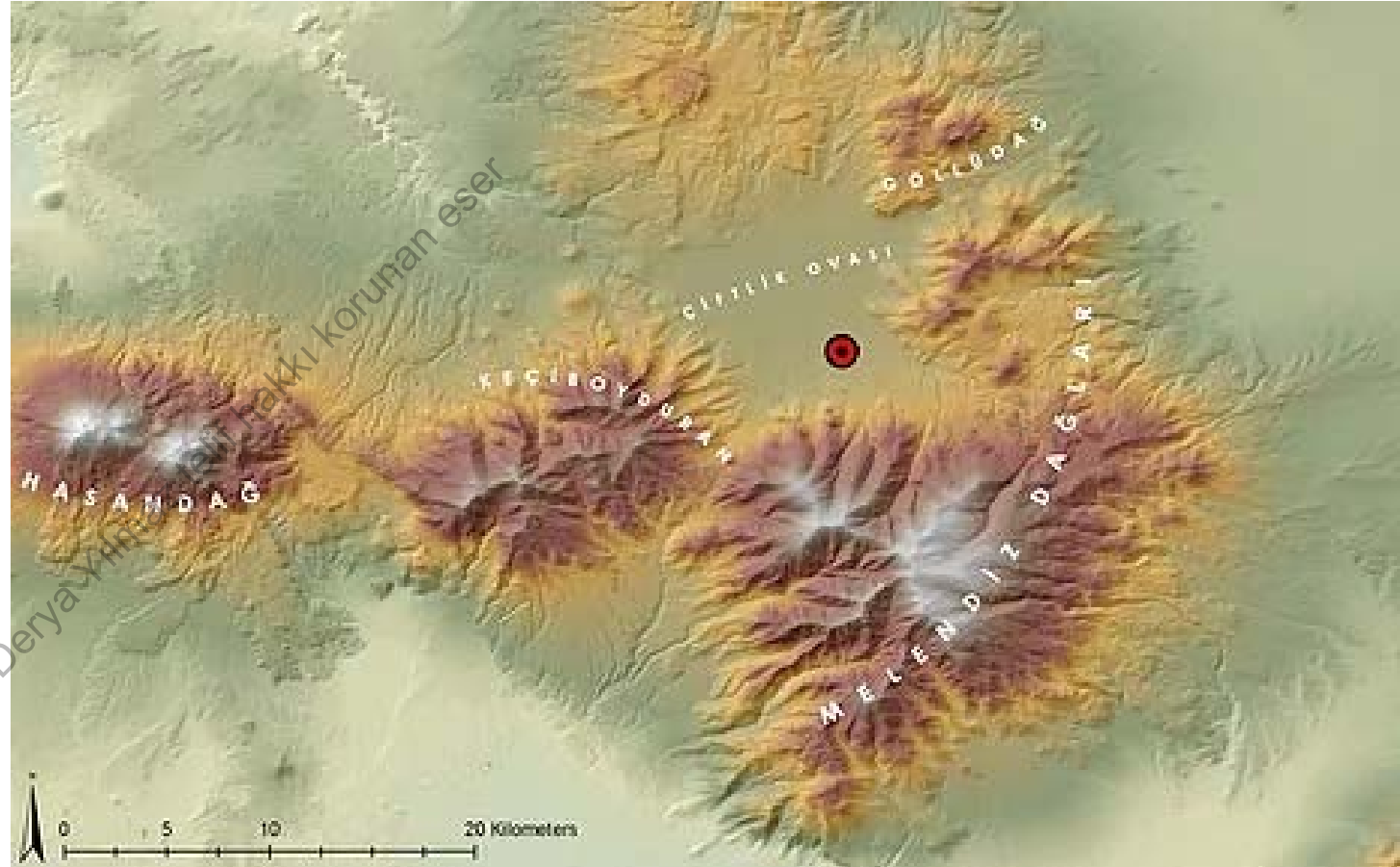


Tepecik-Çiftlik

© Doç. Dr. Derya Yılmaz telif hakkı korunan eser

Tepecik

- Tepecik-Çiftlik is a prehistoric settlement in Volcanic Cappadocia, Central Anatolia. The settlement is within the borders of Niğde Province, Çiftlik district, and is dated to approximately 7500-5800 BC.
- The settlement is located very close to the Central Anatolian obsidian sources where obsidian, a very important raw material for prehistoric people, is found in abundance.





View of the mound from the northeast,
with Keçiboyduran Mountain at the back.

© Doç. Dr. Derya Almaz telif hakkı korunan eser

Topographic plan and excavated areas.

- Tepecik-Çiftlik, which was first identified during the survey of the Central Anatolian region conducted by Ian Todd in 1966.
- The excavations in Tepecik-Çiftlik were run jointly with the Niğde Museum between 2000 and 2006.
- Since 2007 they have been run by a team under the scientific leadership of Professor Erhan Bıçakçı, a lecturer in the Istanbul University Department of Prehistoric Archaeology, with the permission of the Ministry of Culture and Tourism of the Turkish Republic.



Prof. Erhan Bıçakçı

- the mound is nearly 6 hectares in size. The top of the mound is almost 9.6 m high. The deepest levels are nearly 7.30 metres below the surface, but we have not yet reached bedrock.

© Doç. Dr. Derya Yılmaz telif hakkı korunan eser



Stratigraphy

- At Tepecik-Çiftlik, a total of 14 levels were identified from the Late Roman-Early Byzantine, Early Chalcolithic, Pottery Neolithic and Pre-Pottery Neolithic periods.

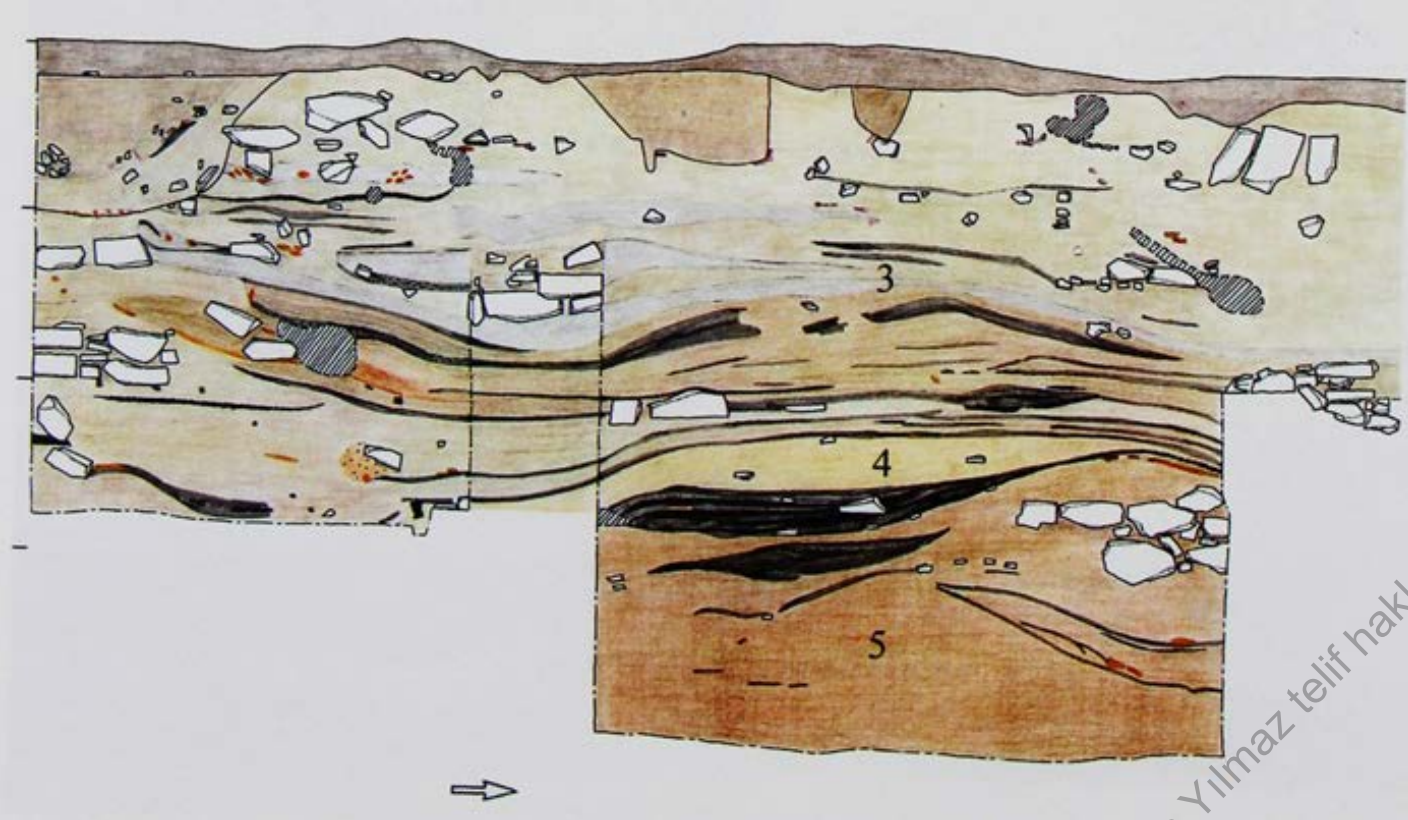
<u>Period</u>	<u>Level</u>	<u>Date</u>
Late Roman-Early Byzantine	1	
Early Chalcolithic	2	5800-6100 cal. BC
Neolithic	3-9	6100-7000 cal. BC
Neolithic	10-14	7000 BC and earlier

- The Late Roman-Early Byzantine period is represented by several graves found close to the surface of the mound. No other finds from the Late Roman – Byzantine period were recovered.



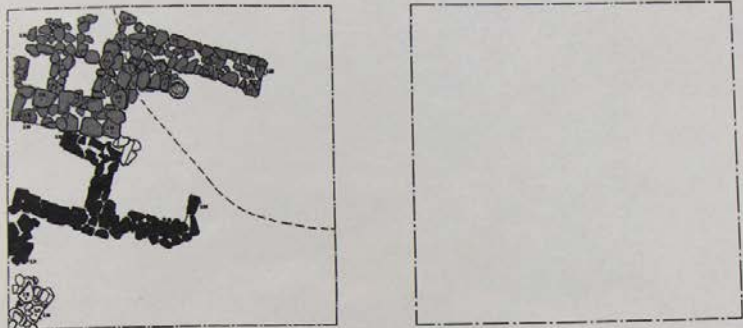
© Doç. Dr. Derya Yılmaz telif hakkı korunan eser

General view from the architecture.



drawing of the 3rd, 4th, and 5th layers in the profile

Building phases in the 3rd layer D and AD structures, gray indicates continuing architecture, black indicates newly built building elements.



stone foundations
of various
structures.



General architectural view from the level 4.

© Doç. Dr. Derya Yılmaz telif hakkı saklıdır.



Two building phases of building O



The P, Q, and R structure



Structures D and AC.



Storage vessels, level II



Fig. 16- 16K açması; ışık.

Fig. 15- 16K açması; ışık.



Workshop area

© Doç. Dr. Derya Yılmaz İleri / Erişim hakkı korunmaktadır



Level 3 walls and graves of level 4

Fig. 18- 16K açması 3. tabaka duvarlar ve 4. tabakaya ait gömütler.



3rd layer three structures (U, Y and AD), deep floor 4th layer

Fig. 19- 16K açması 3. tabaka U, Y ve AD mekanlar, 4. tabaka, derin açma (5. açma).

Infant grave in pottery,
level 4



Burial customs

- * intramural
- * inhumation

almaz telif hakkı korunan eser



hocker tomb, level 4



Grave belonging to level 4, secondary.



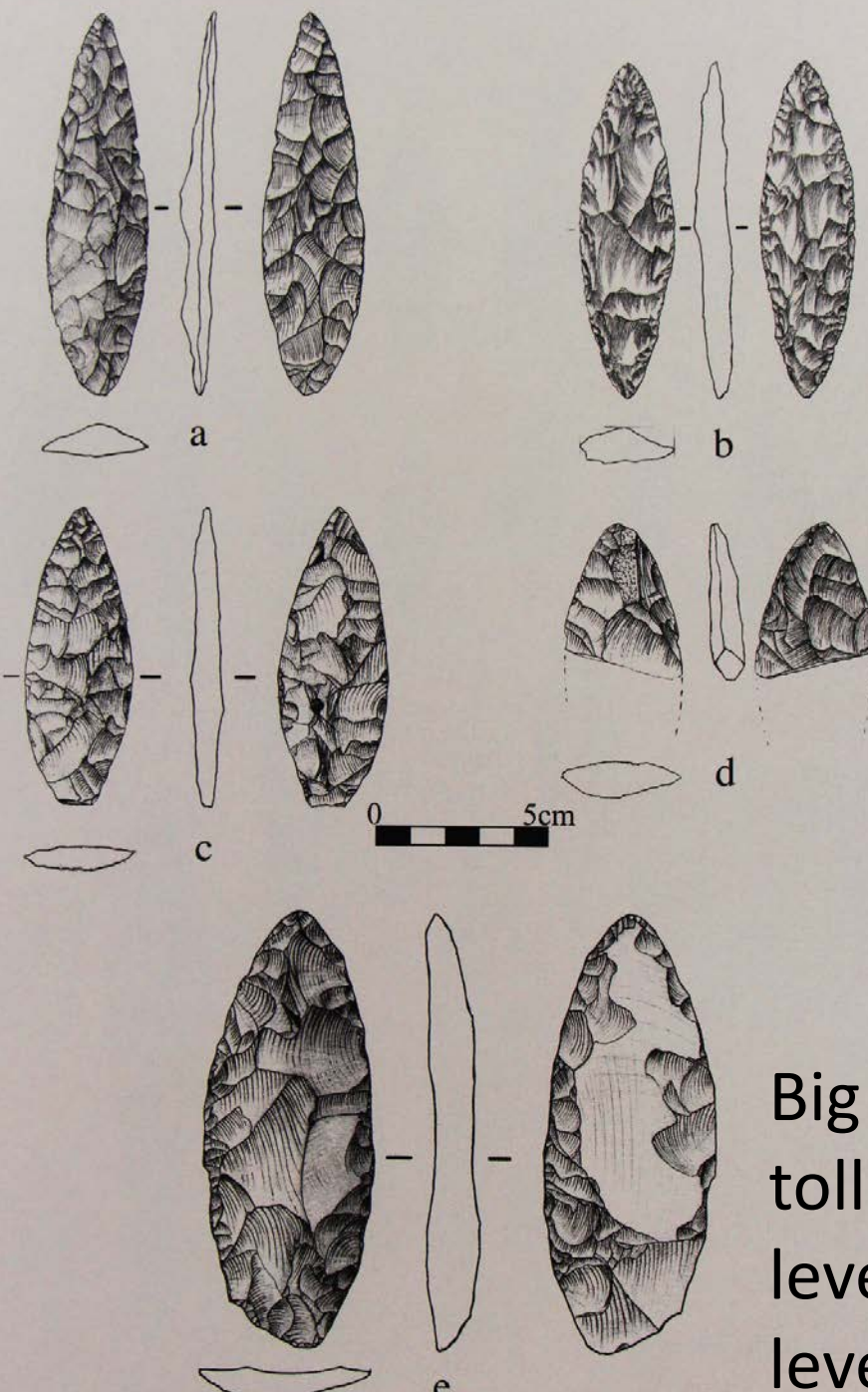
three skulls and long
bones separated from
their bodies.



Arrows and spearheads found together and a clay seal were found in level 5.

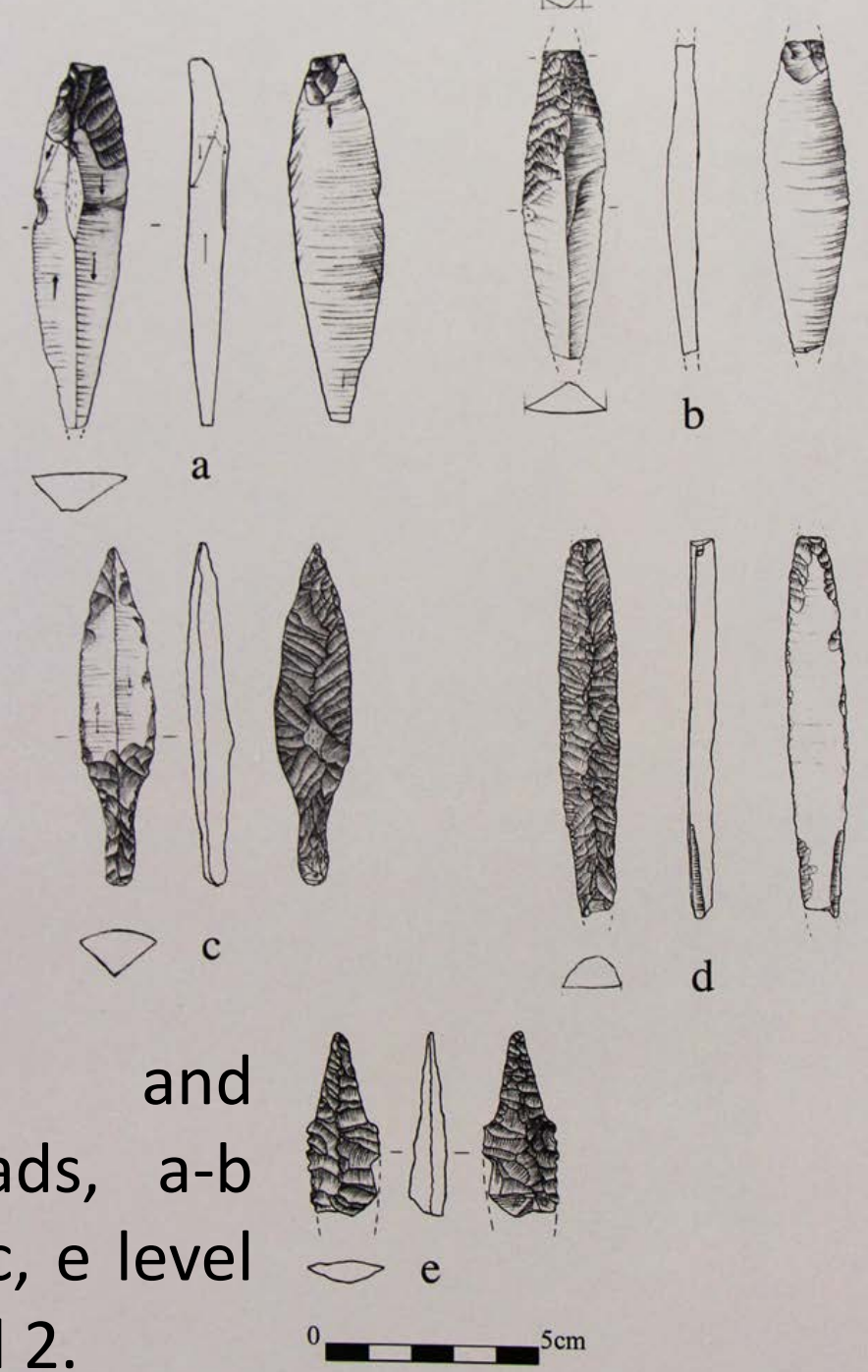


Oven floor which found at level 5



Big size stone
tools, a, c-d
level 5; b, e
level 3

© Doç. Dr. Derya Yılmaz telif hakkı korunan eser



Arrow
and
spearheads, a-b
level 3, c, e level
5, d level 2.

Arrow and spearheads, level 4.

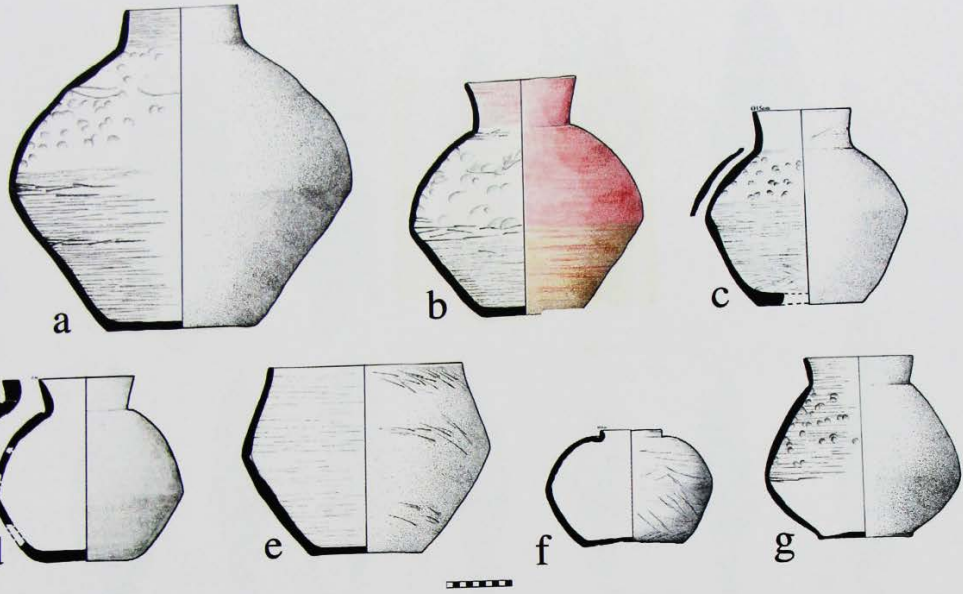


Fig. 28 - 4. tabaka obsidyen uçlar.

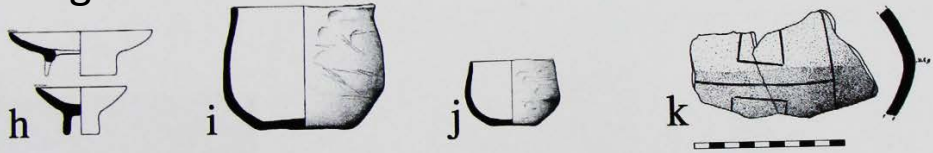
Arrow and spearheads
Early Chalcolithic period,
level 3



Fig. 29 - 3. tabaka, İlk Kalkolitik, obsidyen uçlar.



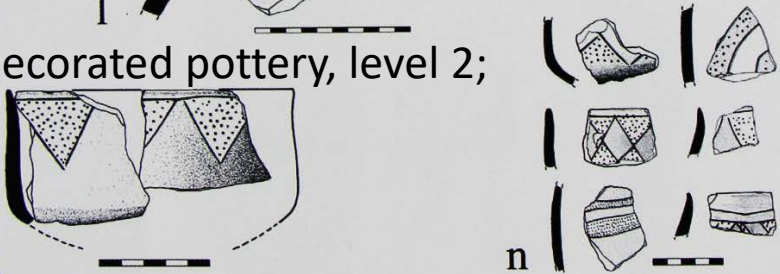
a-g Pots formed in baskets from the level 2-3.



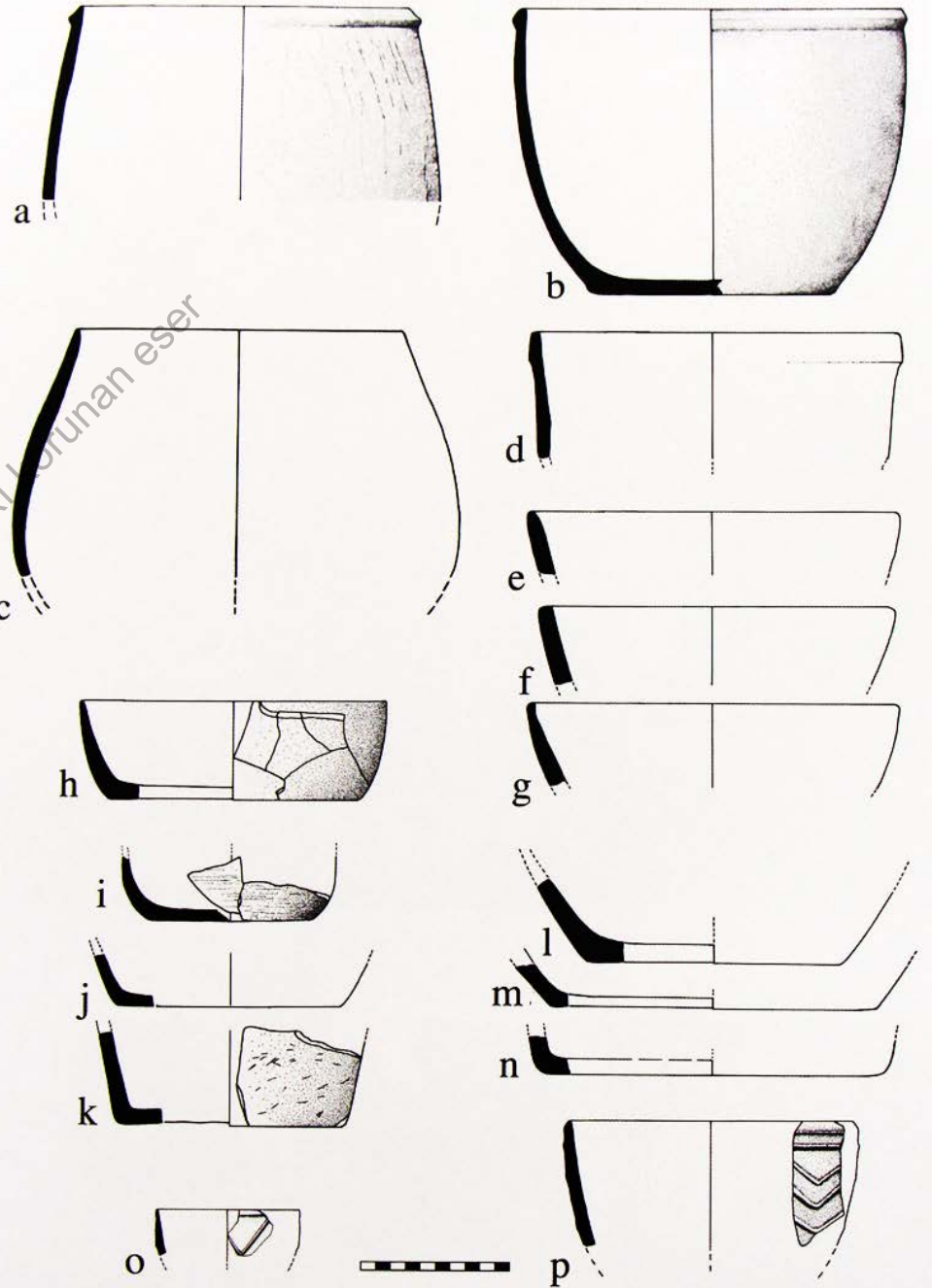
h red slipped vessels, i-j 3rd layer coarse ware



l, relief decorated pottery, level 2;



m, n incised and groove decorated vessels Level 2



© Doç. Dr. Derya Yılmaz telif hakkı korunan eser



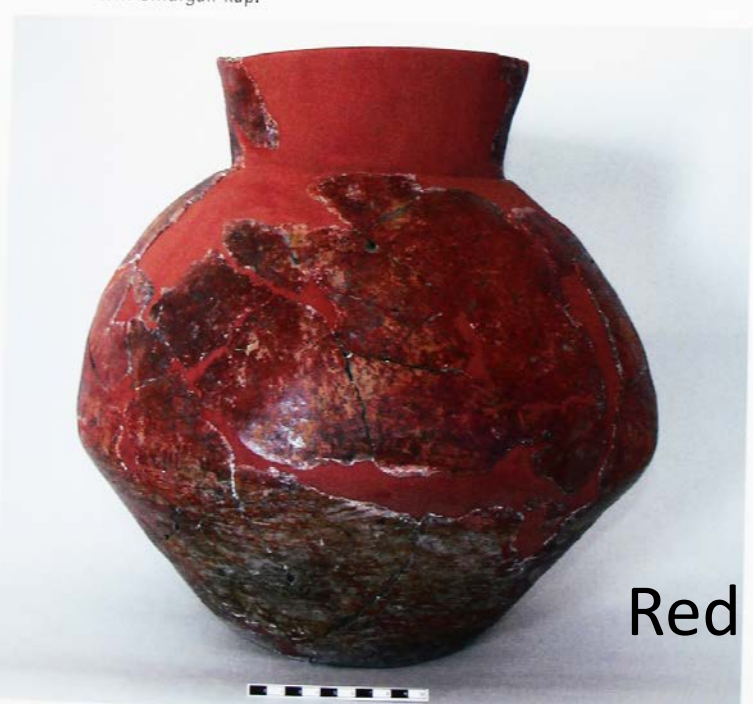
Carinated pottery with a bull's head shaped handle, red slipped and burnished, Level 2.



Black slipped and polished, incised decorated carinated bowl from Level 2.

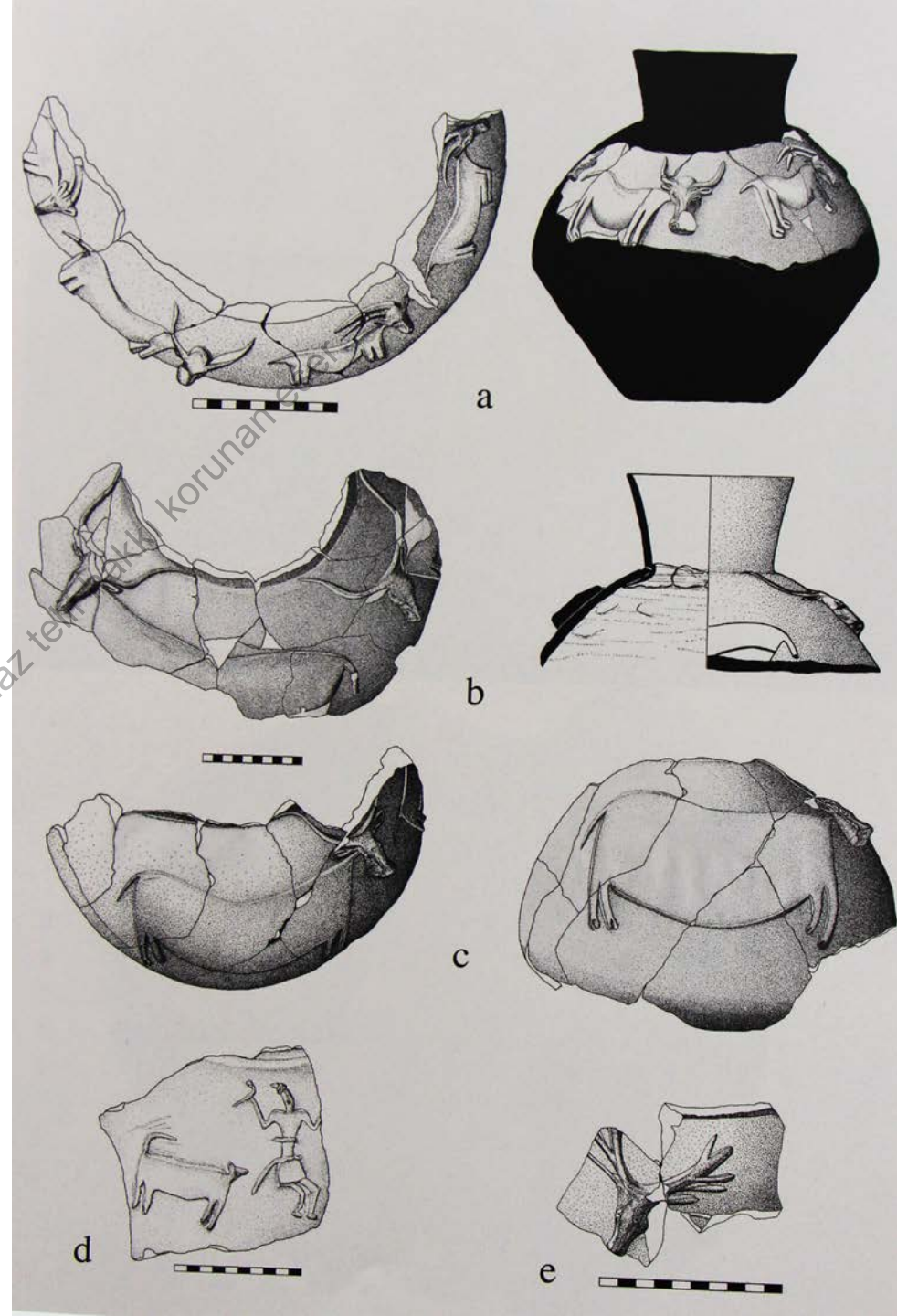


Middle Chalcolithic, level 2, fruitstand 'Meyvelik'



Red slip pottery molded in a basket, level 3.

- Relief decorated vessels from the last phase of the 3rd level.





- Relief decorated vessels from the last phase of the 3rd level.



© Doç. Dr. Derya Yılmaz tebliğ hakkı saklıdır. Her hakları saklıdır.



Level 4, Neolithic pottery.



a



b



c

Level 4, Neolithic ceramics: a. 4th layer pottery, b. 5th layer embossed zig zag decorated bowl fragment, c. 5th layer, impression decorated vessel fragment.

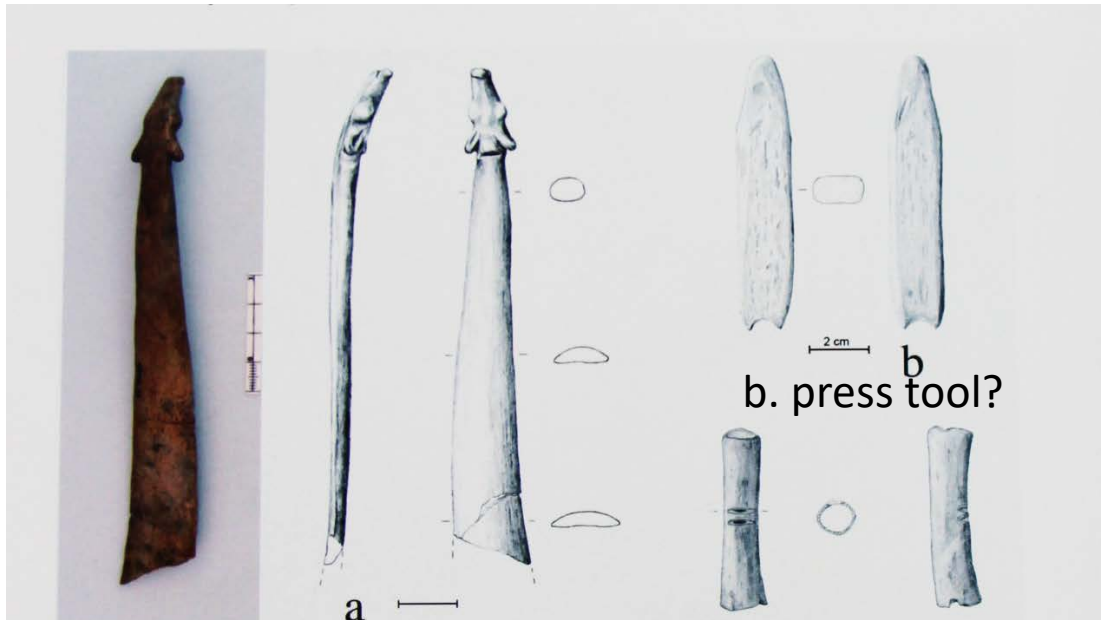
Level 3, anthropomorphic decoration





Neolithic, Level 4, wavy line decorated bowl and relief decorated necked jar

Bone finds from the 3rd layer



a. calf-headed bone object

b. press tool?

c. whistle



d. spoon

e. press tool

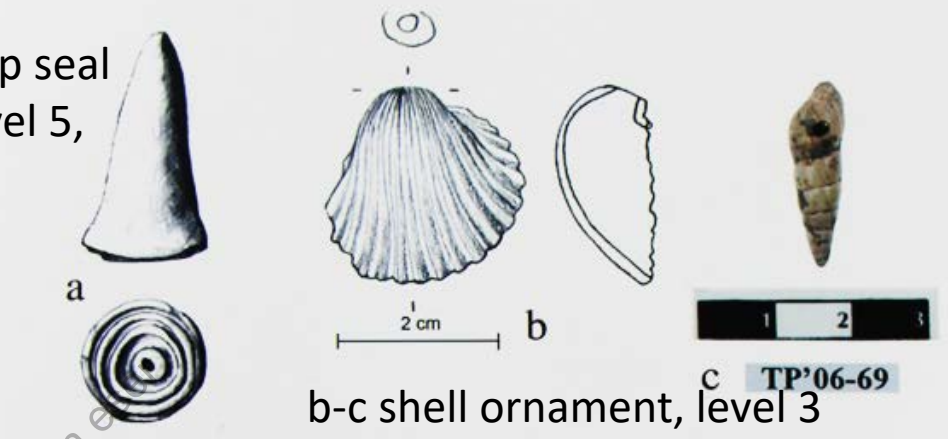
f. spatula

g. bracelet



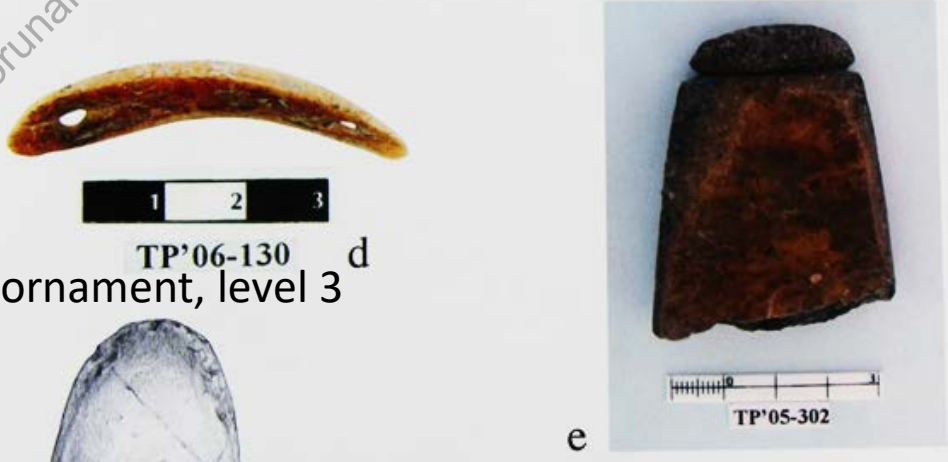
h-l phalanx idols

a. Clay stamp seal from the level 5, Pintadera / imprint



b-c shell ornament, level 3

d. animal tooth ornament, level 3



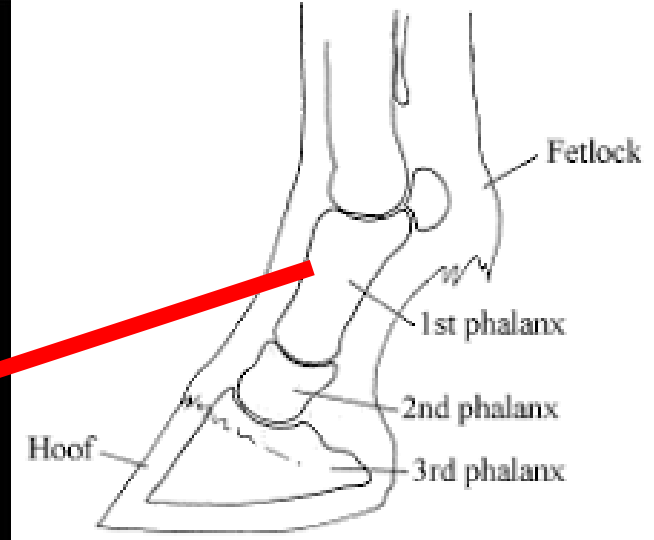
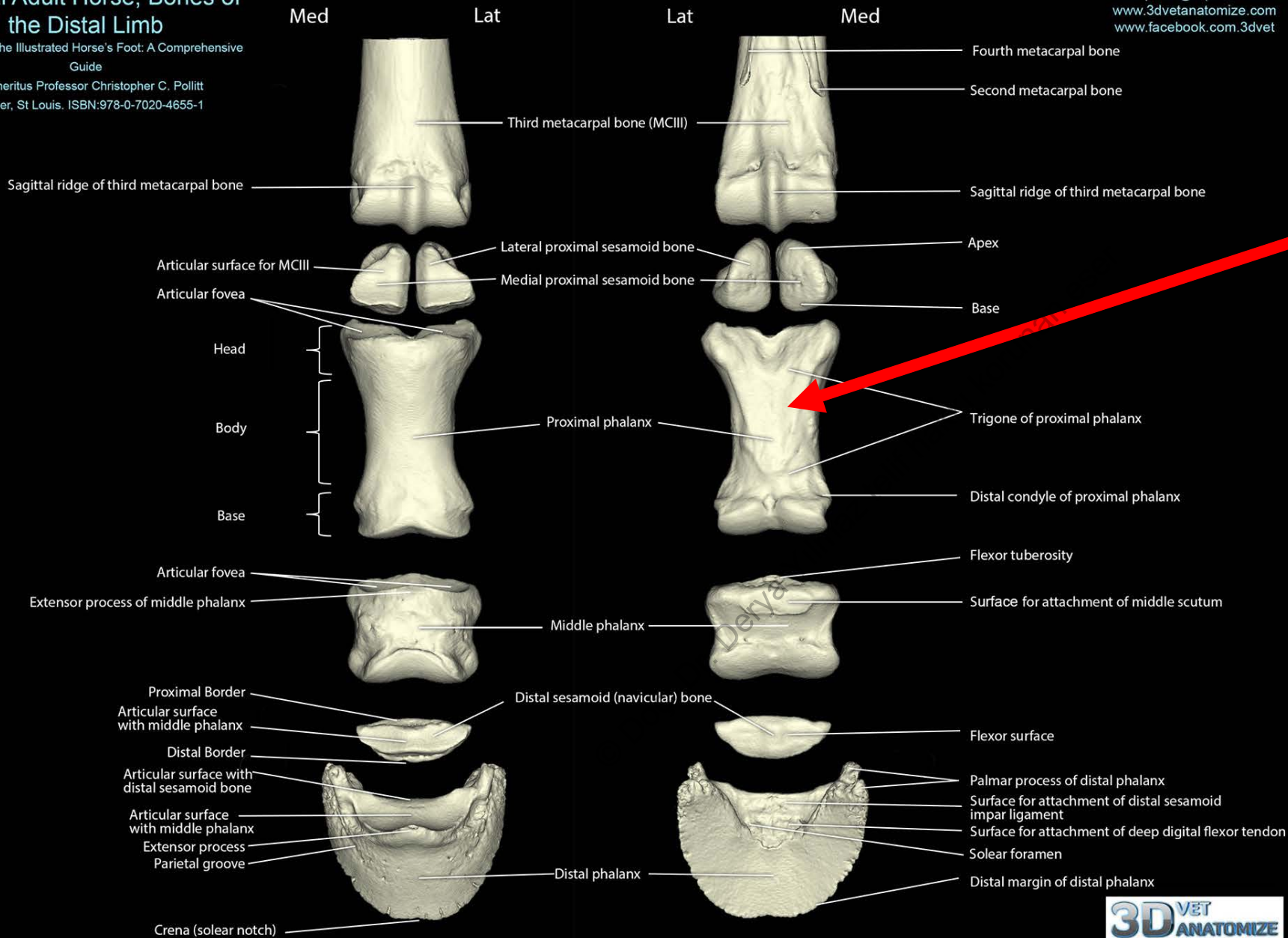
e-i various ground stone tools level 3



Normal Adult Horse, Bones of the Distal Limb

Reference: The Illustrated Horse's Foot: A Comprehensive Guide
 by Emeritus Professor Christopher C. Pollitt
 Elsevier, St Louis. ISBN:978-0-7020-4655-1

c.pollitt@uq.edu.au
 www.3dvetanatomize.com
 www.facebook.com.3dvet



Bones of the Digit
 Figure 7

What is Phalanx ?
 It is the name given to a bone in the foot of an animal. Idols made from here are called Phalanx idols.





First chalcolithic, level 3, limestone, unfinished figurine.

Dr. Derya Yılmaz telif hakkı korunan eser

Selected References

Bıçakçı, E.; Altınbilek Algül-Ç.; Balcı, S.; Godon, M., 2007, « Tepecik-Çiftlik», **Anadolu'nun Dođuşu ve Avrupa'ya Yayılımı, Türkiye'de Neolitik Dönem, Yeni Kazılar, yeni bulgular**, M.Özdoğan, N. Başgelen yayına hazırlayanlar, Arkeoloji ve Sanat Yayınları, İstanbul: 237-255.

Öztan, A., 2007, « Köşk Höyük: Bor Ovası'nda Bir Neolitik Yerleşim», **Anadolu'nun Dođuşu ve Avrupa'ya Yayılımı, Türkiye'de Neolitik Dönem, Yeni Kazılar, yeni bulgular**, M.Özdoğan, N. Başgelen yayına hazırlayanlar, Arkeoloji ve Sanat Yayınları, İstanbul: 223-237.

Tepecik Project web site: <https://www.tepecik-ciftlik.org/en>