

The background is a dark blue gradient with a subtle pattern of white dots. On the left side, there are several circular elements: a large scale with numbers from 140 to 260, and several smaller circles with arrows indicating clockwise or counter-clockwise rotation. The main text is centered on the right side.

ACUPUNCTURE

Dr. Pinar Can

pcan@ankara.edu.tr

INTRODUCTION

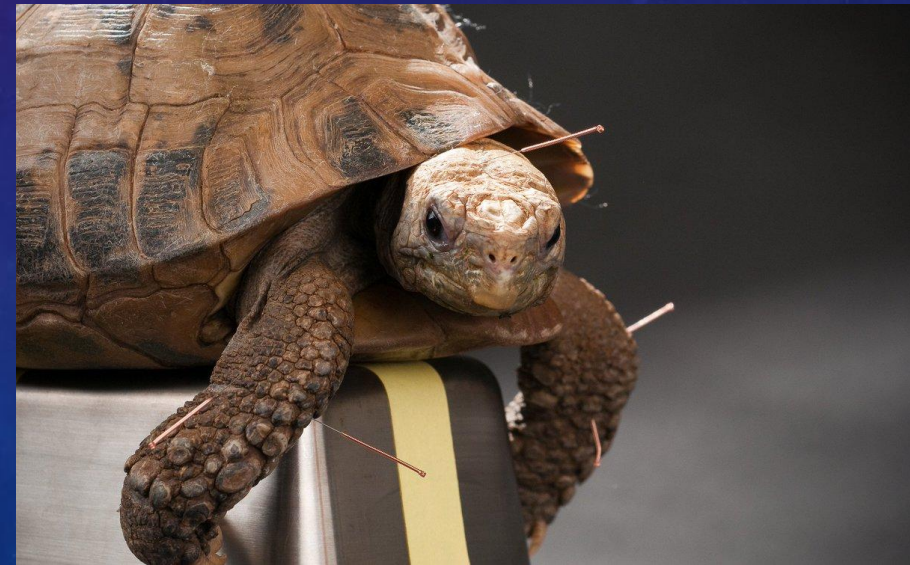
- Traditional Chinese medicine has a 5000-year history.
- In the 18th century, China entered a period of stagnation and acupuncture was adversely affected by this situation.
- During this period, acupuncture was banned in China, and the West started to draw attention.
- In 1958, Chinese and Western Medicine started to use acupuncture together and established research institutes to understand its effectiveness and mechanisms of action.
- In 1974, the International Veterinary Acupuncture Society (IVAS) was established.

DEFINITION

- It is defined as the needling of certain points or points that are sensitive to the pressure found on the skin spontaneously and whose locations are precisely determined, for both the treatment and diagnosis of functional, reversible diseases or disorders.
- Acupuncture = acus (needle) + punctura (piercing)

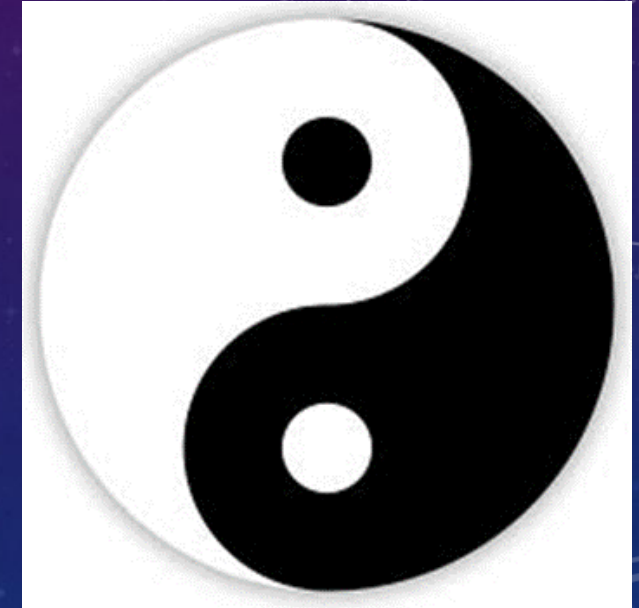


https://s.abcnews.com/images/Health/AP_acupuncture_albino_alligator_lpl_130829_16x9_992.jpg



<https://pbs.twimg.com/media/EHbUZMdU4AAoGh6.jpg>

- According to traditional Chinese medicine, the universe and all formations in the world are based on forces that contain the principle of opposition and affect each other.
- These forces are in balance with each other.
- If the opposing systems in the body (Yin and Yang) work in a balanced and harmonious way (homeostasis) health occurs, this balance and harmony are disrupted, and illness occurs.
- The interaction between Yin and Yang produces Qi (vital energy, bipolar energy).



- Yin and Yang can be thought of as two poles of opposite electric charge, and Qi as the current flowing between them.
- In case of illness, electromagnetic abnormality occurs in the acupuncture points of the diseased organ or tissue or in the acupuncture points in the compatible parts.
- In other words, an energy imbalance occurs when the flow between meridians stops.



- Acu points are located on linear meridians and channels on the body surface (skin).
- These are high voltage or low resistance electromagnetic foci.
- The aim of acupuncture is to balance the Qi energy that circulates in the body and provides the balance between the meridians.



- The stimuli given to the aquatic points reach the brain through nerve fibers, after being evaluated there, self-healing mechanisms are activated either by reflexes or neurochemical ways.
- Successful acupuncture restores the natural balance of the organism. It is not able, however, to heal permanently destroyed tissue.
- Today, these points can be stimulated by needle, palpation, ultrasound, light or electric current.



https://vcahospitals.com/colonial/primary/-/media/vca/images/hospitals/united-states/new-york/colonial/gallery/876x493_colonial_acupuncture.jpg?h=493&w=876&la=en&hash=02990A6EB5A0A06BC9C8AE40E6B626A3



https://harradine.com.au/wp-content/uploads/sites/8/2013/06/feline_acupuncture.jpg

Acupuncture Point and Meridian Concept

- The acupuncture points themselves are locations along the external channels where a higher number of nerve endings and capillaries causes resistance in the skin to be measurably lower.
- By stimulating these points, we are able to affect the flow of energy in the entire organism from here.

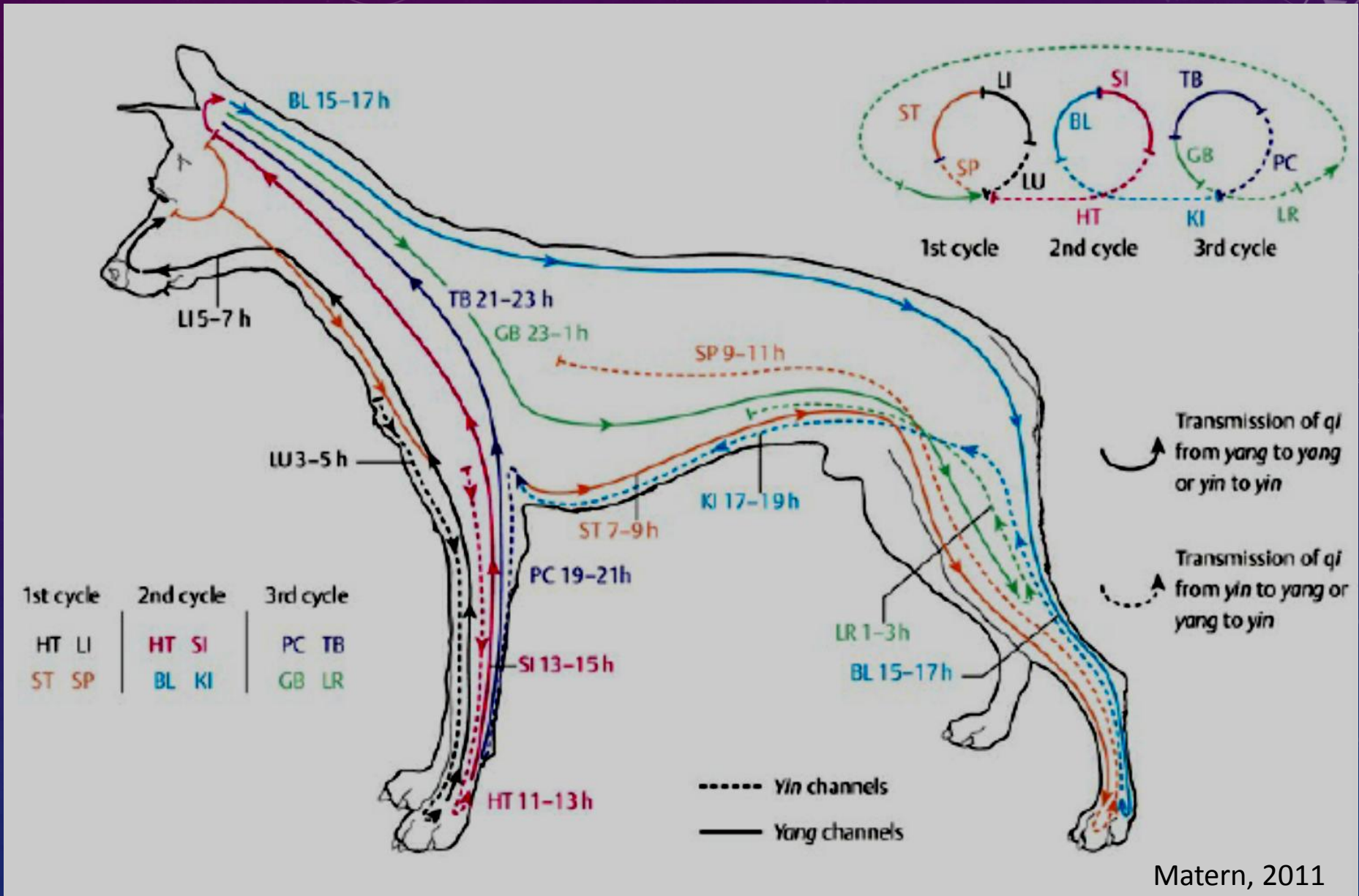


<https://dranimalorg.files.wordpress.com/2019/01/cropped-scamper-acupuncture-2.jpg>



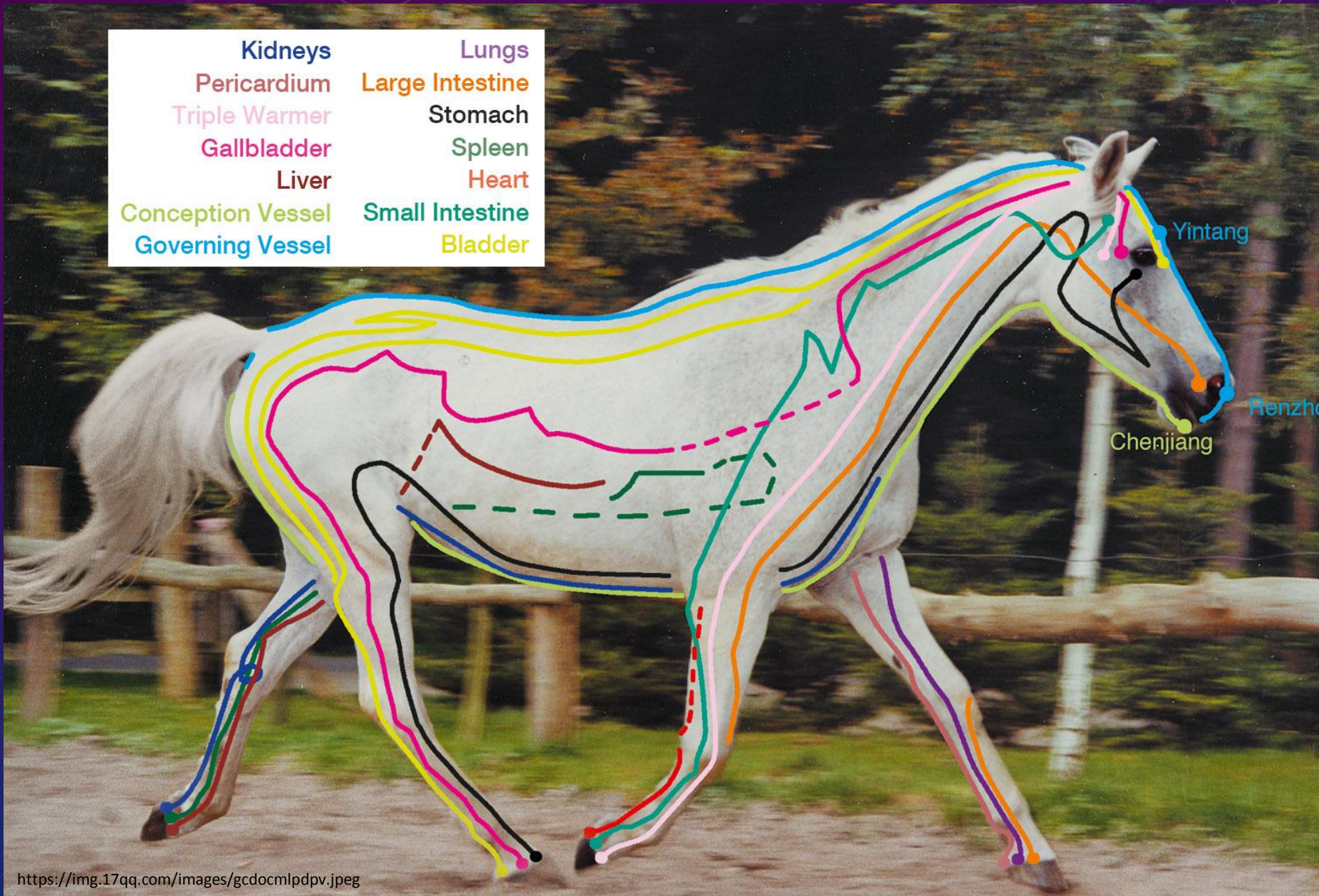
https://horsej-intellectsolution.netdna-ssl.com/cdn/farfuture/Kfykyuy0gKufirNM57NjMc3ytT17hwHklpxJIOQ7HY/mtime:1504208520/files/styles/article_large/public/picture-s-videos/articles/acupuncture_pics-13_-_webfeaturebox.png?itok=Bsli-cSY

- Acupuncture points connect with each other through channels, these channels are called meridians.
- There are 12 classical meridians in humans and dogs.
- Yin channels; heart (HT), lung (LU), kidney (KI), pericardium (PC), spleen/pancreas (SP), liver (LR)
- Yang channels; large intestine (LI), small intestine (SI), stomach (ST), urinary bladder (BL), triple heater or triple burner (TH or TB), gall bladder (GB).



Matern, 2011

Kidneys	Lungs
Pericardium	Large Intestine
Triple Warmer	Stomach
Gallbladder	Spleen
Liver	Heart
Conception Vessel	Small Intestine
Governing Vessel	Bladder

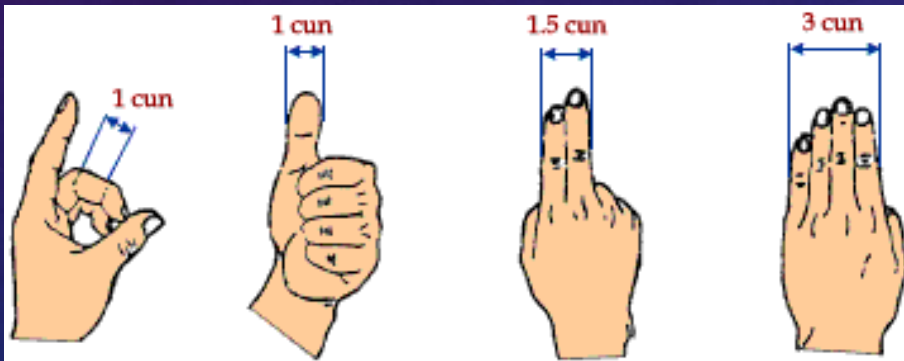


<https://img.17qq.com/images/gcdocmlpdpv.jpeg>



Determination of Acupuncture Points

- Based on superficial anatomical marker locations
- Measuring electrical skin resistance (where resistance is lowest)
- Finger 'cun unit' dimensions



<http://www.tcmstudent.com/images/cunfinger.gif>



https://shop.opis-supplies.ca/wp-content/uploads/2015/04/1170_Excel_Single1.jpg

Effects of Acupuncture

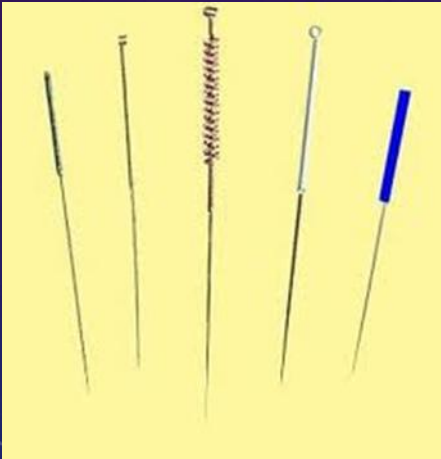
- Analgesic effect (gate-control theory, inhibitory theory, endorphin theory)
- Homeostatic effect (autonomic nervous system)
- Immunity enhancing effect
- Sedative effect
- Psychological effect
- Motor healing effect

Acupuncture Techniques

- Needle acupuncture
- Acupressure
- Cupping/Scraping
- Moxibustion
- Aquapuncture
- Laser Acupuncture
- Gold Acupuncture or Gold Implantation
- Sound Acupuncture
- Electroacupuncture
- Ear acupunctur

Needle Acupuncture

- Fine, elastic, sterile disposable needles from human medicine are used
- A subjective reaction occurs when the needle is placed in the acupuncture point correctly; numbness, rapid inspiration, play in the ears and tail



https://www.wangfordvetclinic.com/page/file/userResources/w400/acupuncture_Sleepy-Dae-dog.jpg



<https://cliniquepiejoux.fr/wp-content/uploads/2020/11/acupuncture-chat-980x653.jpg>

Acupressure

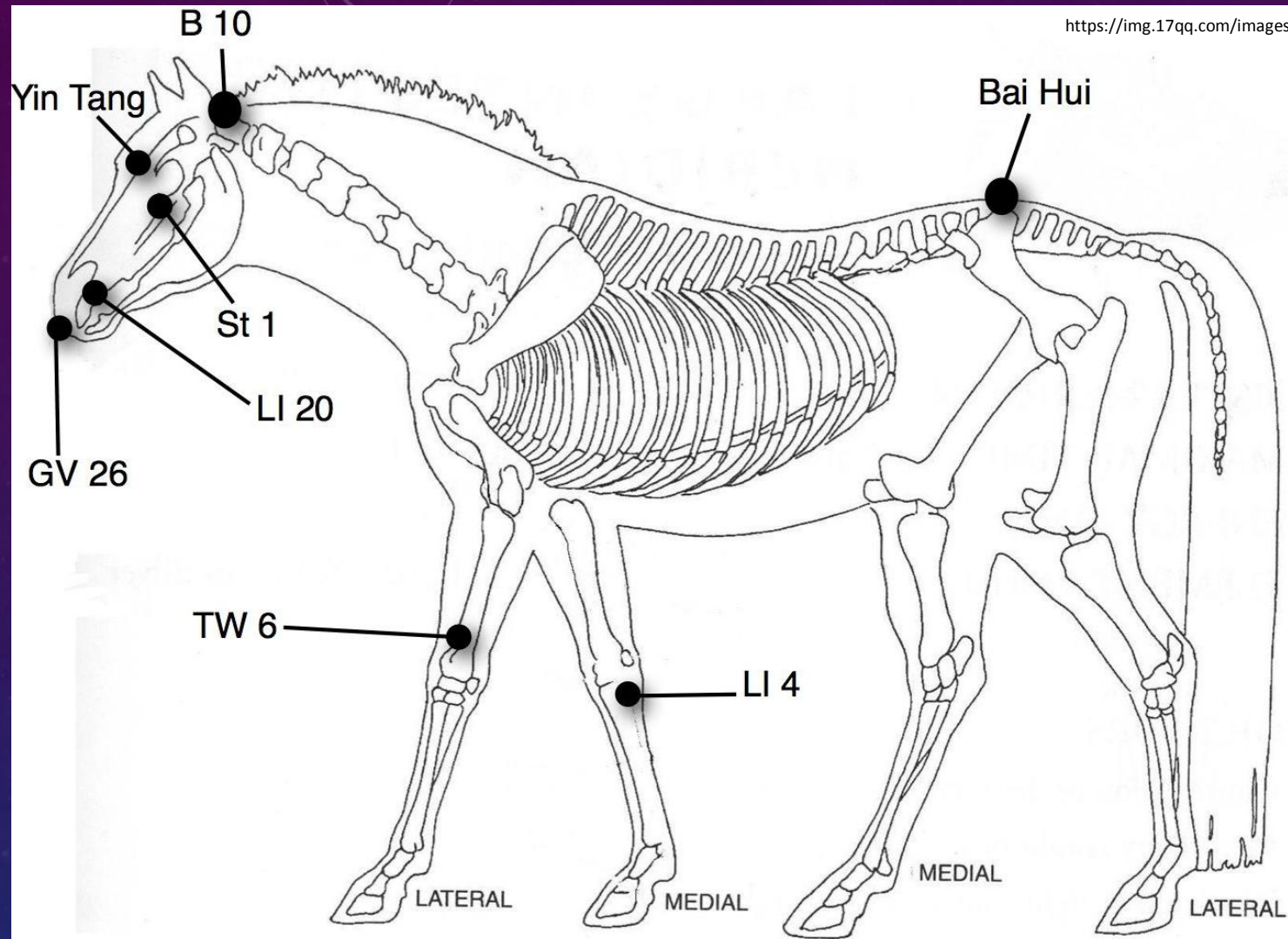
- It is known as needleless acupuncture.
- It is the application of finger pressure to acu points.
- Although it is not used frequently in veterinary medicine, it is preferred to reduce pain and muscle spasm in cases such as diarrhea, indigestion, contusion and paralysis.



<https://encrypted-tbn0.gstatic.com/images?q=tbn:AND9GcQHR6UawdqyFbCq4acFsIRDSbTO7UVeNIX0eg&usqp=CAU>



<https://austinhorsedirectory.com/blog/wp-content/uploads/2018/03/acupressure-brassard-equine.jpg>



Equine Acclimatizing Acupressure Points

Gently rub any of these points, using fingers, palms or knuckles, for as long as the horse lets you, to warm up, stimulate and encourage the to easily shift and adjust to changing climates, temperatures and air pressure.

Cupping

- Heat + vacuum
- the aim is to provide local microcirculation
- Indicated for rheumatoid arthritis in large animals and indigestion in juvenile animals.



<https://bingsnaturalhealth.com.au/wp-content/uploads/2016/10/Cupping-dog.jpg>



https://scontent.fesb5-1.fna.fbcdn.net/v/t1.6435-9/7098044_2158116947817767_2485279338316955648_n.jpg?_nc_cat=105&ccb=1-3&_nc_sid=973ba8&_nc_ohc=cq4mkkwq88AX-m00SR&_nc_ht=scontent.fesb5-1.fna&oh=87ff444ea6cd2470957728f1b3254168&oe=60847FEC

Moxibution

- Moxa is produced from *Artemisia vulgaris* (mugwort) and is used in different forms.
- In veterinary medicine, the preferred form is as pressed moxa cigars with or without smoke development, or as loose moxa.
- During application, moxa is lit and develops a very particular aromatic fragrance and a very special heat quality.



<https://www.canr.msu.edu/pestid/uploads/images/Mugwort-flower1.jpg>



https://cdn.shopify.com/s/files/1/1029/2207/products/moxa_268x188.jpg?v=1569329503



https://acushop.eu/media/catalog/product/cache/35/image/3fa98de60589b92e9485d0bf15a64109/b/_b.120.0015_01.jpg

- The smoke penetrates into the channels, to move qi and blood there.
- Moxa is effective for conditions such as cold and qi stagnation in the channels, painful joints, numbness, infertility, and paralysis.
- For small animals, it is easiest to light moxa in cigar form and then hold it or wave it back and forth at a distance of approximately 2 cm above the relevant acu point.
- Moxa easily brings energy into the body. The application of moxa is **contraindicated** during **pregnancy** and in **inflammatory** processes.



<http://www.globaltimes.cn/Portals/0/attachment/2011/0116af74-e756-4fdd-8e6e-9a9bcbc2a915.jpeg>



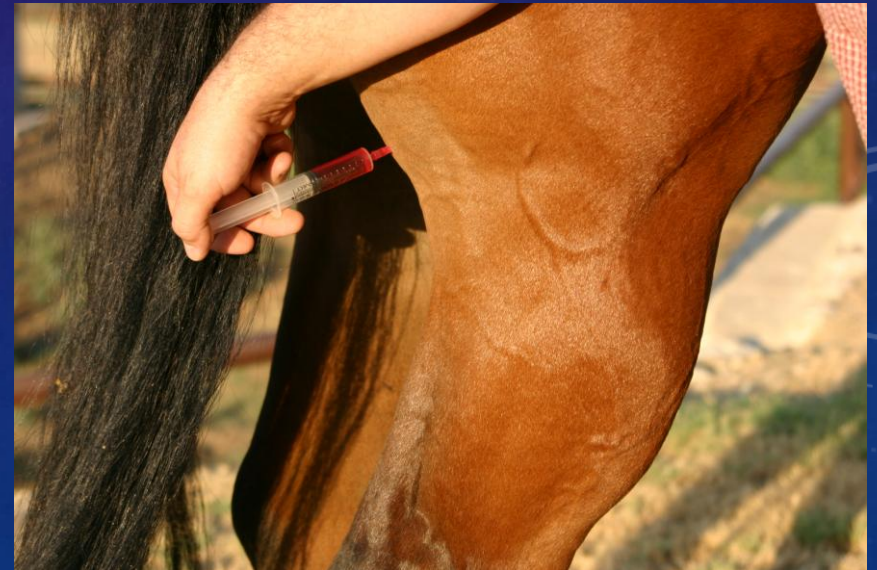
<http://equinesportsmassage.com/wordpress/wp-content/uploads/2014/03/Rosie-Neck-Hips.jpg>

Aquapuncture

- We can use injection cannulas to inject fluids into acupuncture points.
- The slow absorption of fluid in the tissue creates longer-lasting pressure at the acupuncture point, which is meant to amplify the effect of the needle.
- Injectable substances are, among others, Traumeel (Heel, Baden-Baden, Germany), echinacea, vitamin B12 or anesthetics such as lidocaine.
- Indicated in eye infections, allergies, rheumatoid arthritis, paresis, contusion-induced lameness



<https://i.pinimg.com/originals/0b/03/a6/0b03a6f9196709e5398c21985db1a440.jpg>



https://depaoloequineconcepts.files.wordpress.com/2012/03/img_6801.jpg

Laser Acupuncture

- Lasers are used to stimulate body cells or acupuncture points with light energy.
- Laser acupuncture is painless and therefore bearable even for patients with needle phobia.
- Indicated for arthritis, rheumatoid arthritis, muscle-tendon injuries, paralysis and operative analgesia in dogs



Gold Acupuncture or Gold Implantation

- This method is applied most commonly to achieve a permanent effect and improvement in chronic degenerative joint disease.
- For a permanent effect, gold wires or balls can be implanted into the acupuncture points.
- The most common indications include hip dysplasia, elbow arthrosis, gonarthrosis, and spondylosis



https://www.mdpi.com/animals/animals-02-00426/article_deploy/html/images/animals-02-00426-ag-550.jpg



<https://www.monvt.eu/files/10440.jpg>



https://www.foyel.com/archivos/2/5/implantes_oro_4.jpg

Sound Acupuncture

- Sound acupuncture utilizes the vibrations transmitted to acupuncture points via tuning forks at different tuning levels, with which the points resonate.



https://static.wixstatic.com/media/829f79_b725fd38369d45a4a85d466fab597263~mv2_d_6140_4912_s_4_2.jpg/v1/fill/w_473,h_296,al_c,q_80,usm_0.66_1.00_0.01/Kelly-180807049.webp



https://static.wixstatic.com/media/829f79_a6b8a080024840009cbcff5c6dbff2ae~mv2_d_6140_4912_s_4_2.jpg/v1/fit/w_2500,h_1330,al_c/829f79_a6b8a080024840009cbcff5c6dbff2ae~mv2_d_6140_4912_s_4_2.jpg

Electroacupuncture

- By attaching the ends of small charged wires to inserted acupuncture needles, we can conduct electricity and hence yang energy into the acupuncture points.
- It can also be applied with devices called TENS (transcutaneous electrical nerve stimulator) that provide electrical stimulation on the skin.
- Stimulates the endorphin system and create analgesia. Its effect lasts for a long time and has a cumulative effect.
- Intervertebral disc herniation, paralyses, or other neurological deficits, it is very helpful to support acupuncture with electricity.
- Contraindicated in pregnancy, with epilepsy, and with cardiovascular problems.

Ear Acupuncture

- It is accepted that the appearance of the inner part of the auricle resembles a fetus standing vertically in the uterus and that every organ in the body communicates with a point on the ear.
- It can be used in diagnosis and treatment of nervous system and locomotor system diseases.

