

Çayönü

© Associate Prof Derya Yılmaz telif hakkı korunan eser/ copyrighted work

Çayönü

Çayönü is located 7 km SW of Ergani plain near Diyarbakir province.

Çayönü was excavated colloboration of Universities of İstanbul, Chicago, Kalsruhe and Roma between 1964 and 1991. Today excavation continue directorate of Prof Aslı Erim Özdoğan from Çanakkale onsekiz Mart univerity



Çayönü stratigraphy

Phase III: Early Bronze Age- Medieval Times

Phase II: Pottery Neolithic and Early bronze Age I

Phase IIb: Pottery Neolithic

Phase IIa: Late Chalcolithic- Early Bronze Age I

Phase I: Main Prehistoric settlement of Çayönü (PPNA, PPNB and PPNC)

Çayönü Buildings chronology Phase I: Prehistoric earliest settlement

Name of Subphases

Date BP

Round building

10200-9400 PPNA (Pre pottery Neolithic A)

Grill building

Early grill

9400-9200 PPNA

Late grill

9200-9100 EPPNB(Early Pre pottery Neolithic B)

Channelled Building

9100-9000 MPPNB (Middle pre Pottery Neolithic B)

Cobble-Paved Building

9000-8600 MPPNB

Cell Bulding

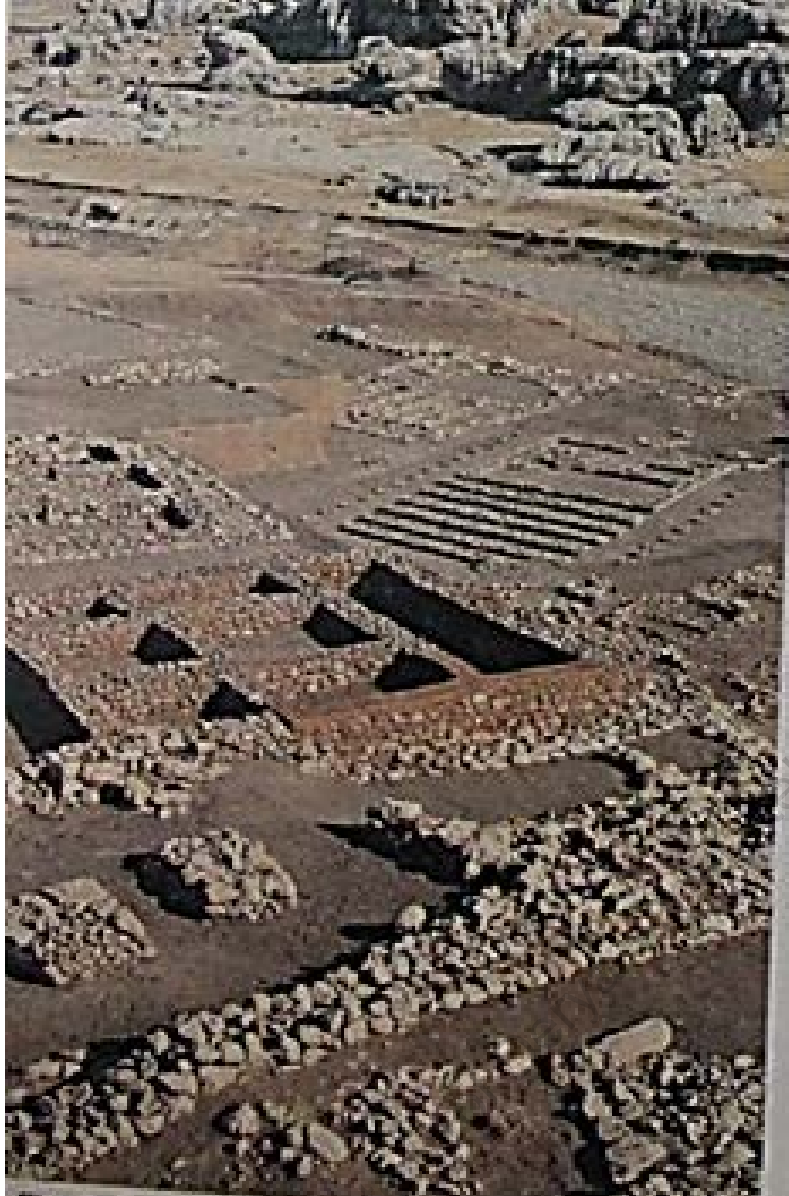
8600-8300 LPPNB (Late Pre Pottery Neolithic B)

Large Room Building

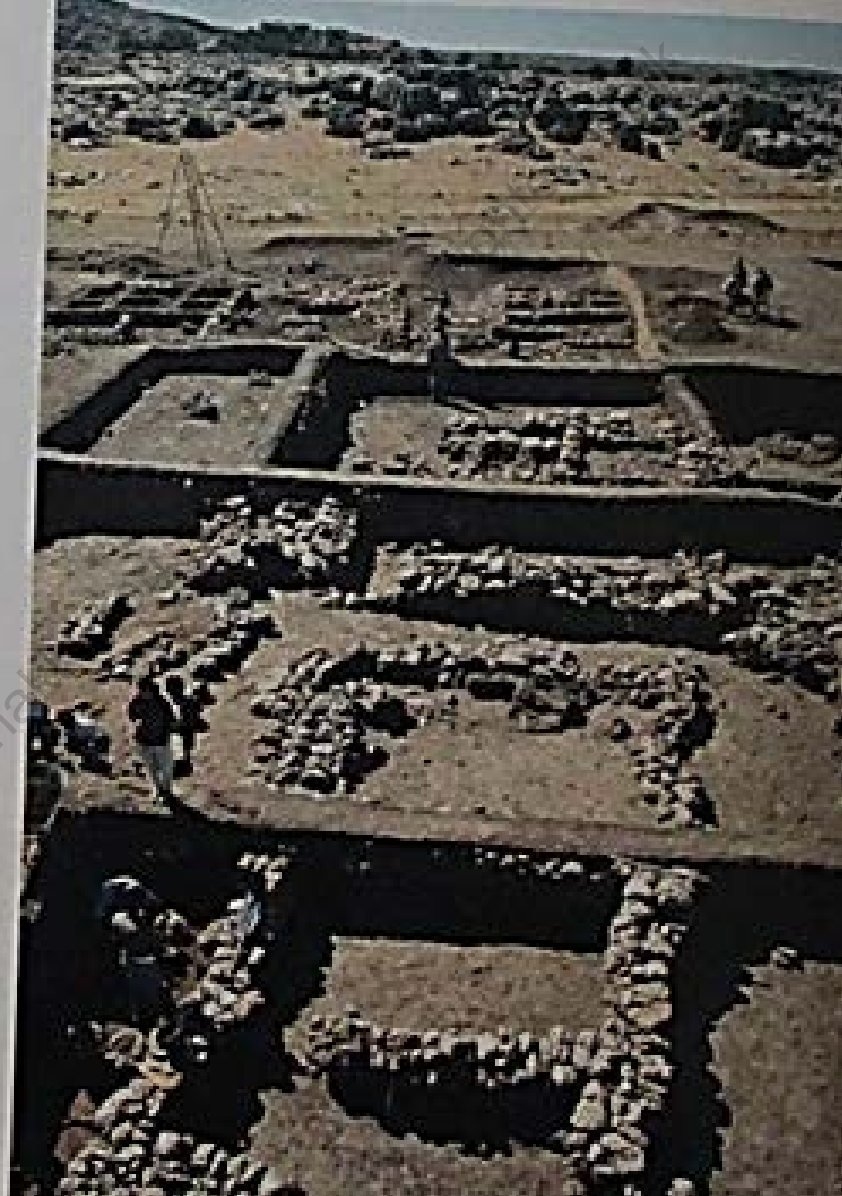
8200- 8000 PPNC



Looking North from the south end of Hilar rocks : the Boğazçay, Çayönü, Ergani Plain and the mountains



Eastern area after restoration
from NNW towards Hilar
Rocks



Pottery Neolithic settlement with
stone foundation

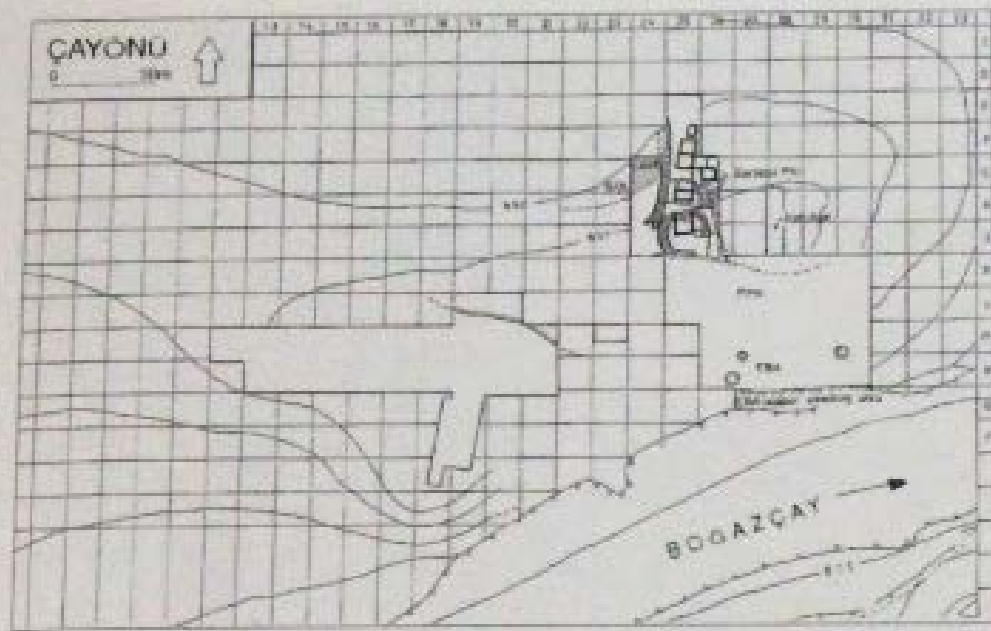


Fig. 5. Pottery-Yielding Settlements



Fig. 9. Hut with stone footing:RA

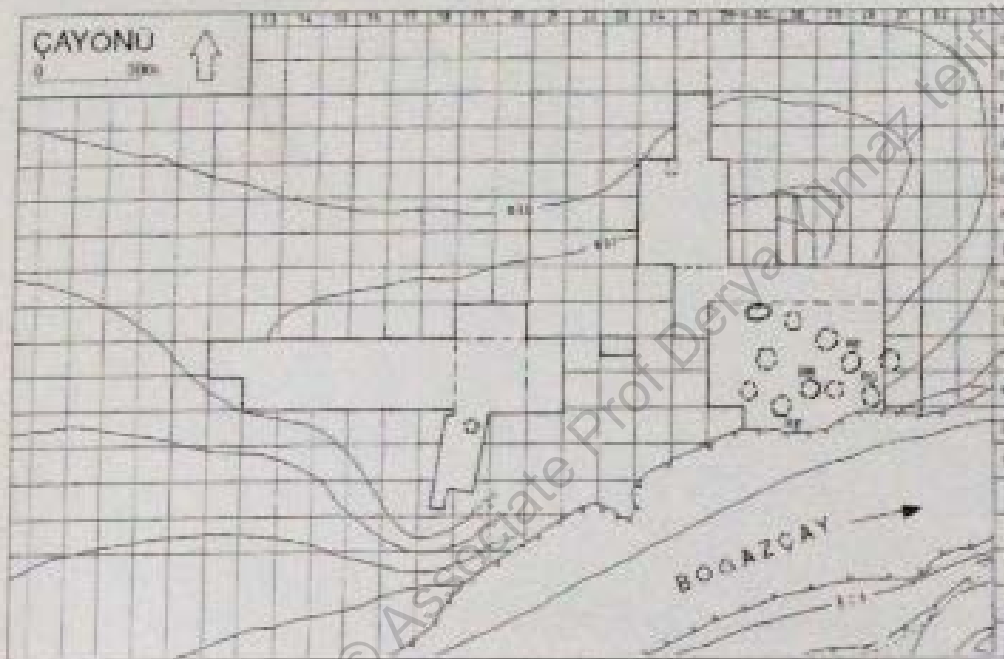


Fig. 6. Round Buildings r3

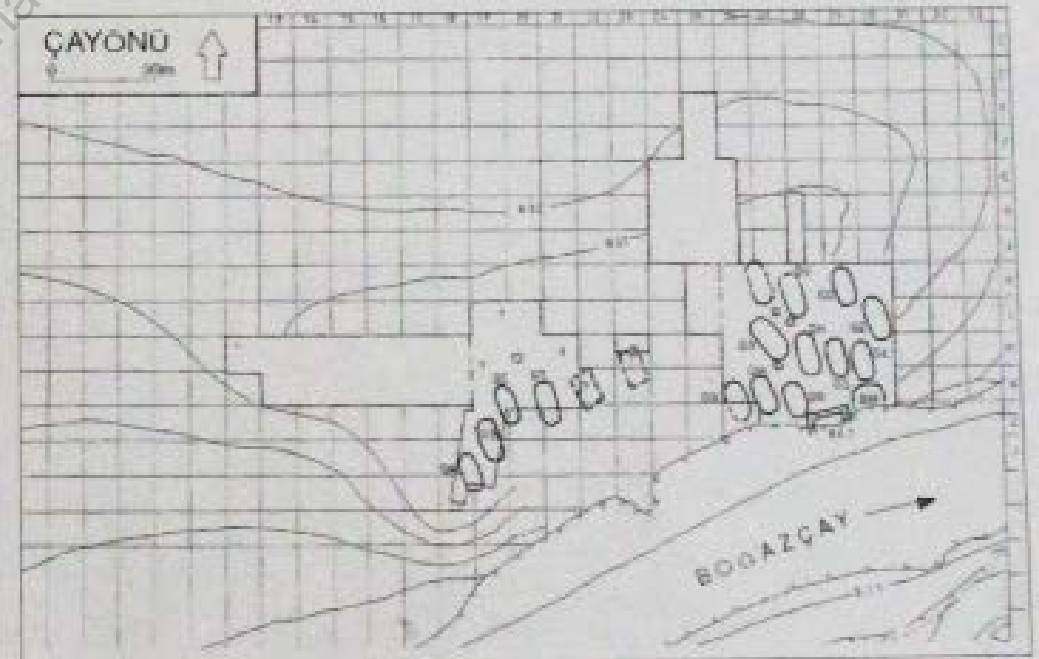


Fig. 10. Early Grill Buildings

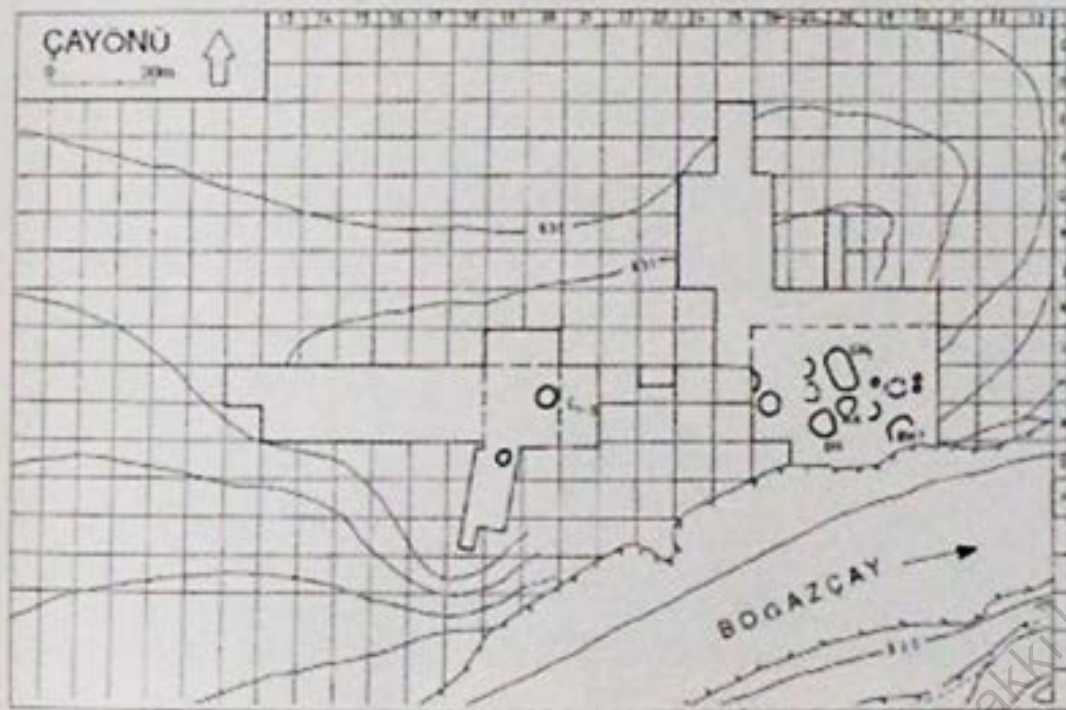


Fig. 7. Round Buildings r4



Fig. 8. A burnt clay fragment with traces of reed bundles

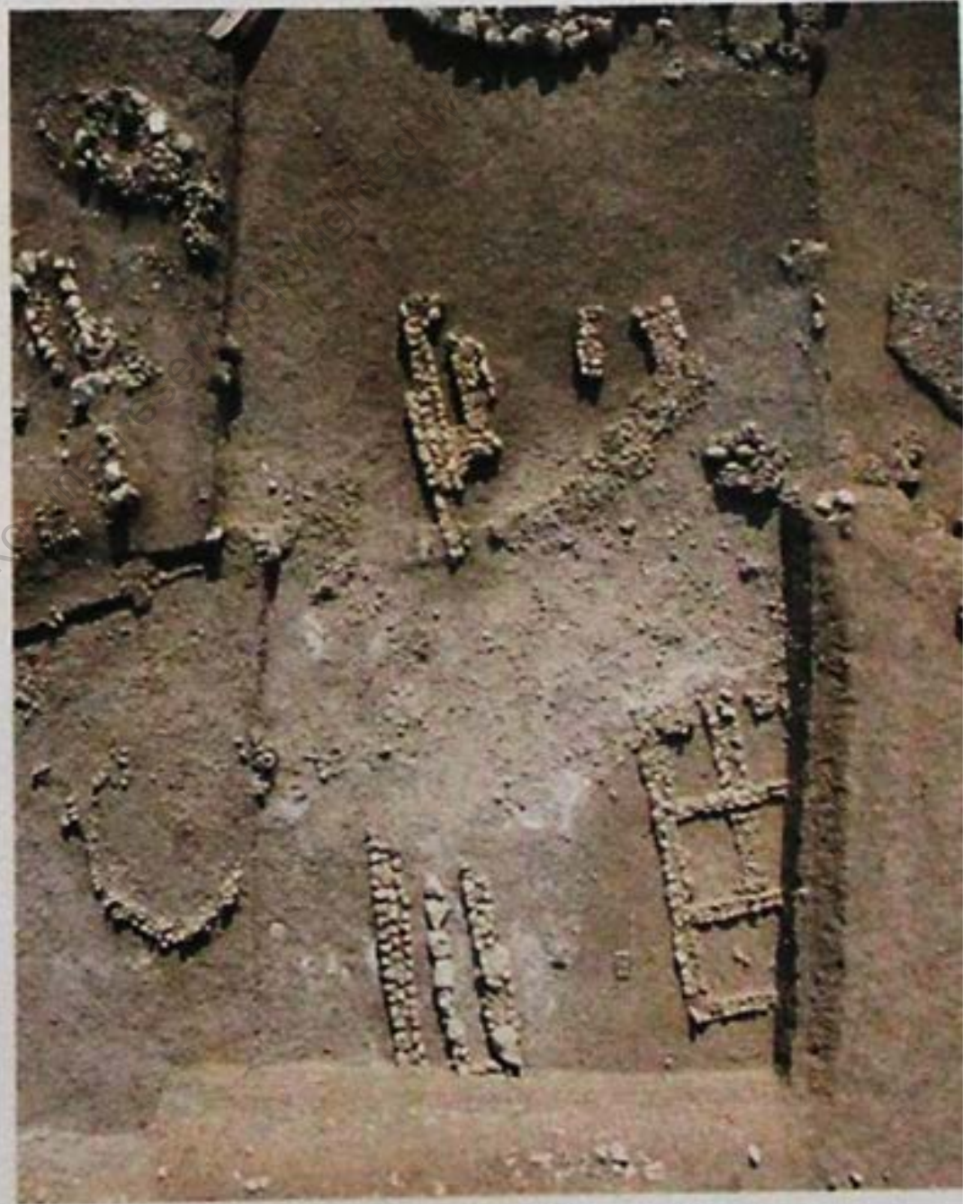


Fig. 11. Grill Buildings disturbed by flood



Grill Buildings



Channelled building and large open space with workshops.



Geometric layout of cell building CA



Skull building round plan of BM1 and rectangular plan of BM2



Burial pit in BM1 of skull building



A necklace among the burials in BM1, in situ



An bison skull with horns fallen from the S Wall of BM2

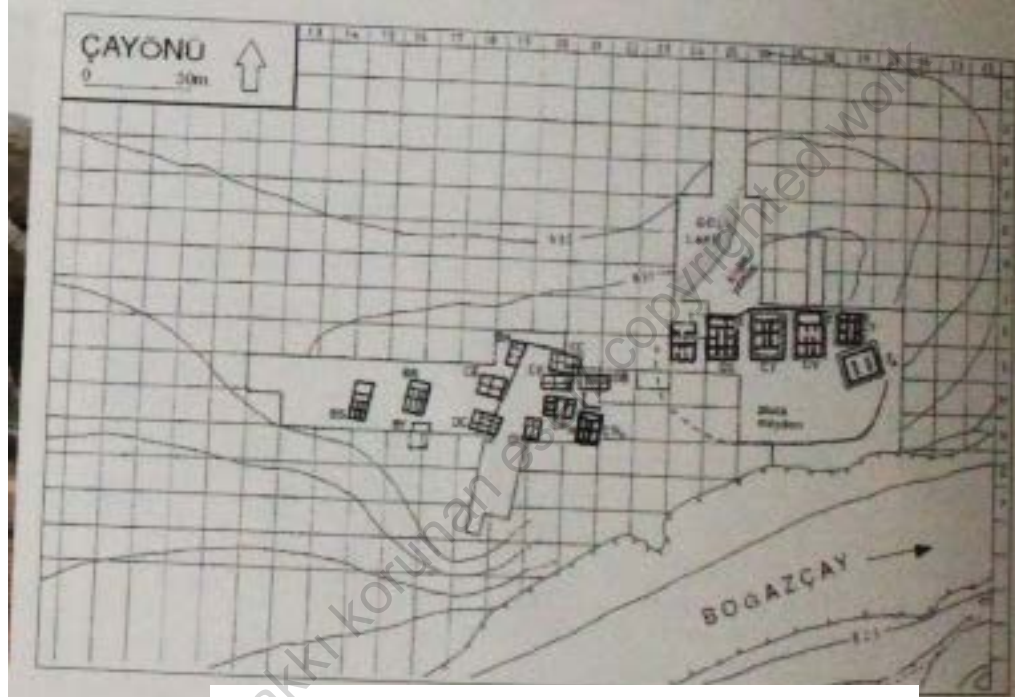


BM 2b-c before the removal of pavements

© Associate Prof Derya Yılmaz



BM2c, W room with organization of skull and long bones



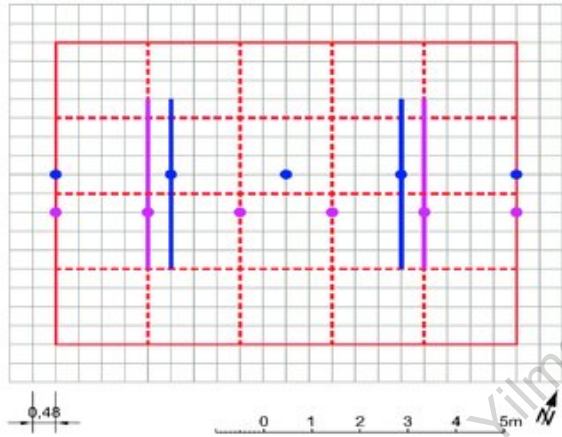
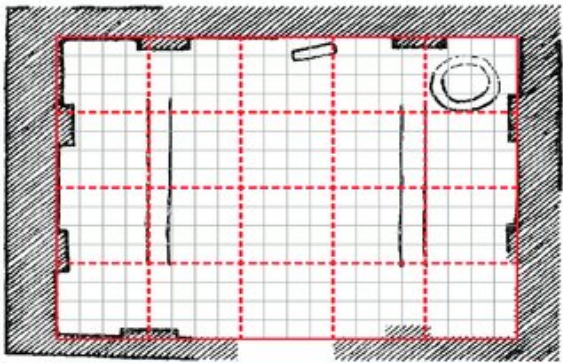
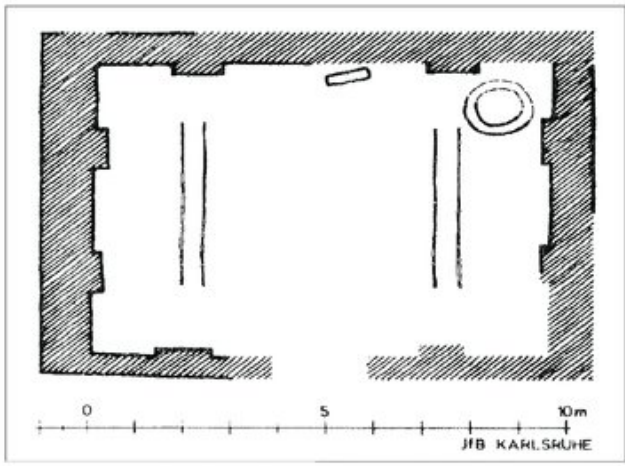
Cell buildings



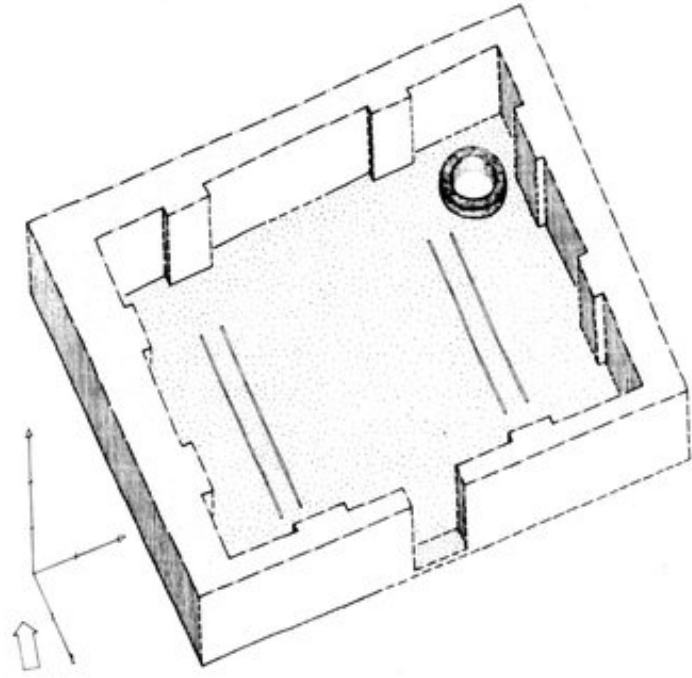
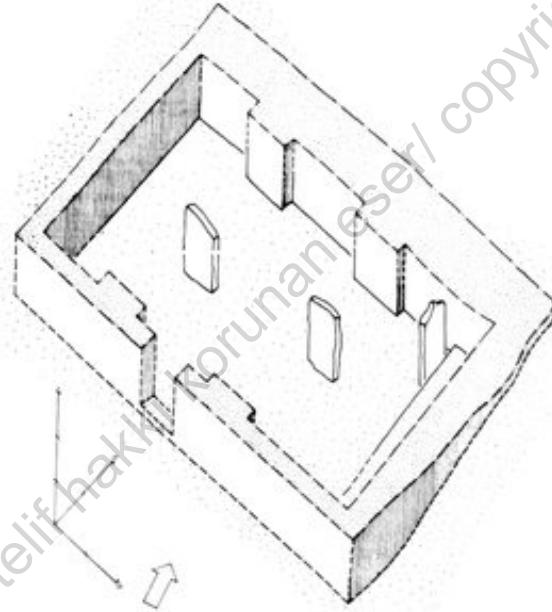
DA building



A cell of DS building



Geometric layout of the terrazzo building



Çayönü: isometric reconstruction of the 'flagstone building' (left) and the 'terrazzo building' (right)



A mat impression from CV building



A clay vessel from CE building



Broken basin with a carved human face from the Terrazzo Building



Large grooved stone of the earliest Plaza one of the broken and buried stele of the earliest Plaza



Burials from CX building



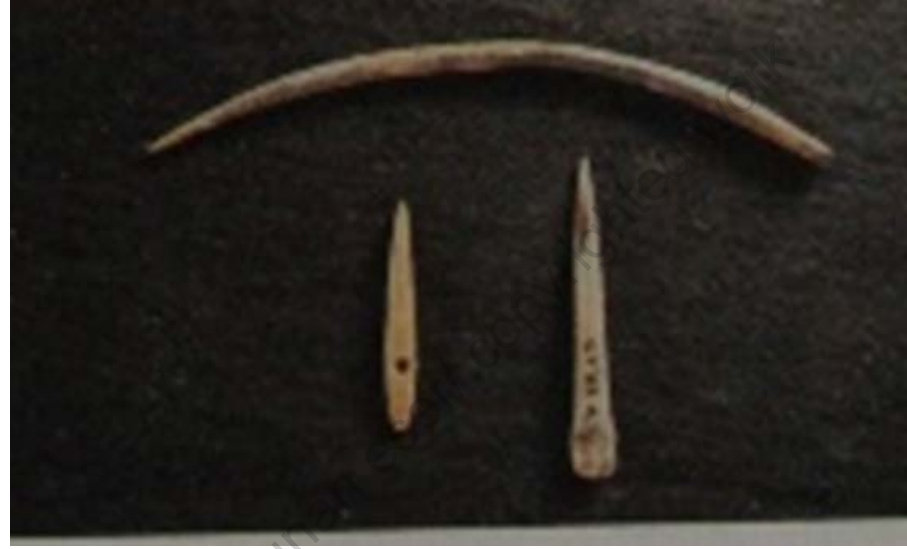
A boar jaw – a funeral offering



Large room buildings and Late cell buildings



Copper awl



Bone needles and an awl



A flint point



A Çayönü tool, obsidian



An antler hammer



Grinding

An antler sickle with cloth impression

Flint borers

Fragment of a decorated stone bowl

A pestle with sculptured handles



Stone beads from different stages

© Associate Prof Derya Yilmaz telif hakkı korumalı çalışması



Stone beads

Shell beads

Stone inlays

A copper bead

A rolled copper bead

© Associate Prof Derya Yılmaz telif hakkı korunan eser/ copyrighted work



A stone animal figure



A clay lady



A clay animal figure

Fig. 68. Nail.

Fig. 69. A malachite inlay

Fig. 70. *Murex Trunculus* with traces of malachite inlay

Fig. 71. A stone animal figurine

Fig. 72. A clay animal figurine

Fig. 73. A stone "lady"

Fig. 74. A clay "lady"



Nail-shaped socketed inlay



A malachite inlay



Murex trunculus with traces of malachite inlay



A clay lady

Selected References

Özdoğan, A., 1999, « Çayönü», in Neolithic in **Turkey the cradle of civilization New Discoveries**, edt. By M. Özdoğan, N. Başgelen, Arkeoloji ve Sanat Yayınları, İstanbul: 35-65.