

Hacılar

© Associate Prof Derya Yılmaz telif hakkı korunan eser/ copyrighted work


Hacılar

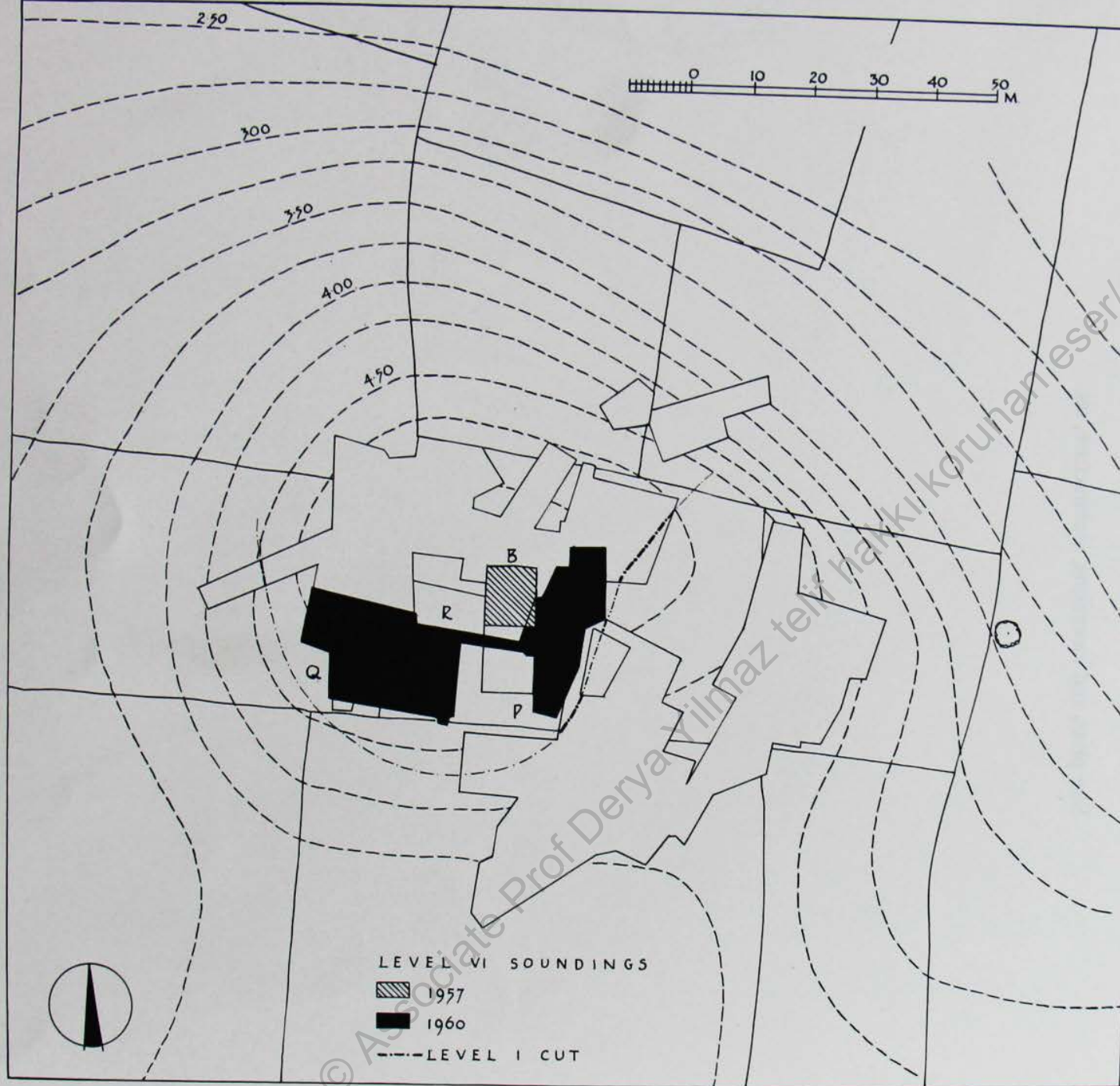
- The site of Hacılar 26 km South-West of the town of Burdur in South-West Anatolia and 1.5 km West of the village of Hacılar itself.



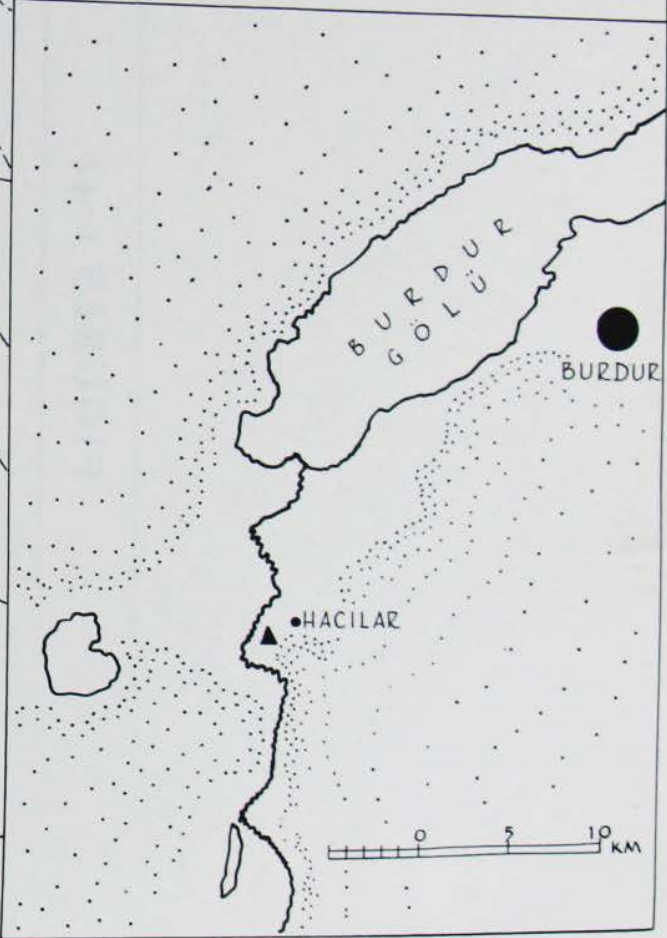
The site and area of the cemetery of Hacilar seen from the rock. At the foot of the rock lies the spring and in the background the valley of the Koca ay.

© Associate Prof Derya Yılmaz telif hakkı korunan eser/ copyrighted work

- 
- Hacilar was first discovered in 1952 by James Mellaart, who excavated at the site between 1957-1960 for four seasons.
 - James Mellaart thought that Hacilar has an Aceramic level according to a sondage result as no pottery sherds were recovered. Today we consider this level must be a sterile fill. On the other side, there aren't any Aceramic sites in the Lake area.
 - 25 years after first excavation season of Hacilar, new investigations to discover the cemetery of Hacilar revealed evidence of pottery in strata such as that previously described as 'Aceramic Neolithic' by Mellaart.



HACILAR BURDUR SITE PLANS



Stratigraphy

Early Chalcolithic

Levels I-V

Late Neolithic

Levels VI-IX

..... Hiatus.....

Early Neolithic

Levels I-VII

Virgin Soil

C14 Level V 6750 BC

C14 Level IX 5393 BC

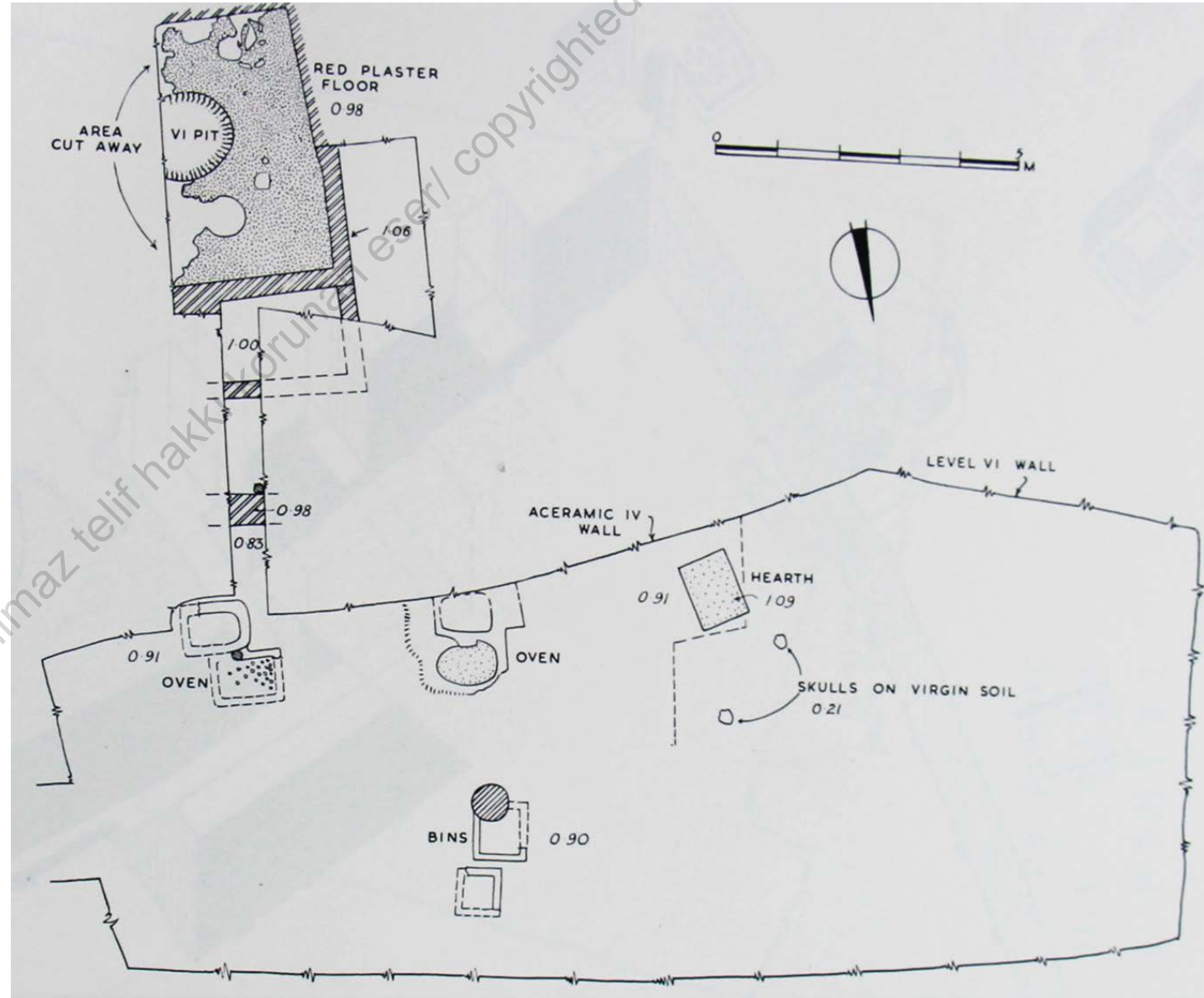
C14 Level VII 5820 BC

C14 Level VI 5590 BC

C 14 Level VI 5399 BC

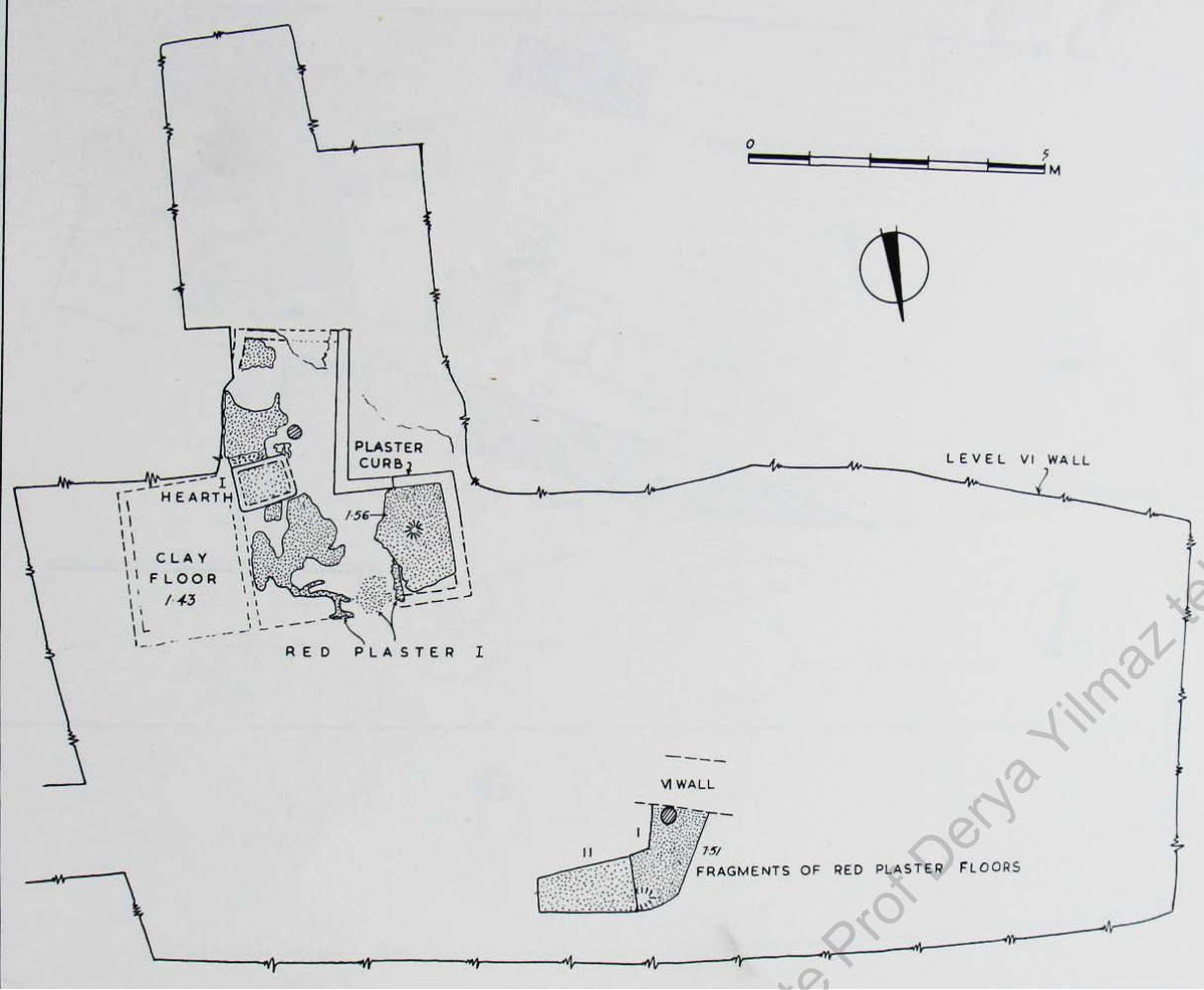
Architecture

- At Hacilar a considerably developed architectural tradition is apparent from the earliest levels onward. A partially excavated structure in Early Neolithic Level V revealed mudbrick walls 70 cm long, some on a foundation course of Stones, and floor first plastered, then coated with red and polished. It is obvious that the structure was rectangular in plan as it is partially excavated, it is not possible to say whether or not there was a doorway; at least none appears in the excavated part.

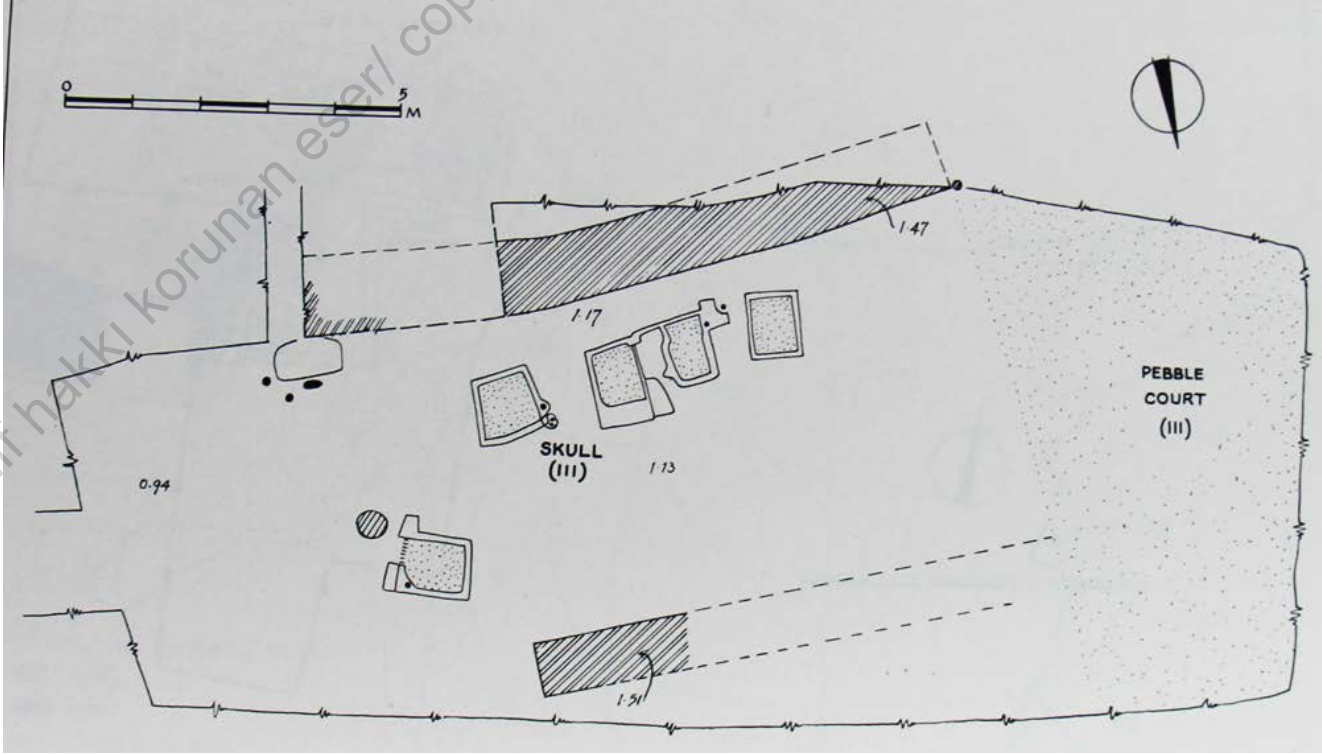


Early Neolithic Level V, Hacilar

Early Neolithic Hacilar, levels I-II plan.

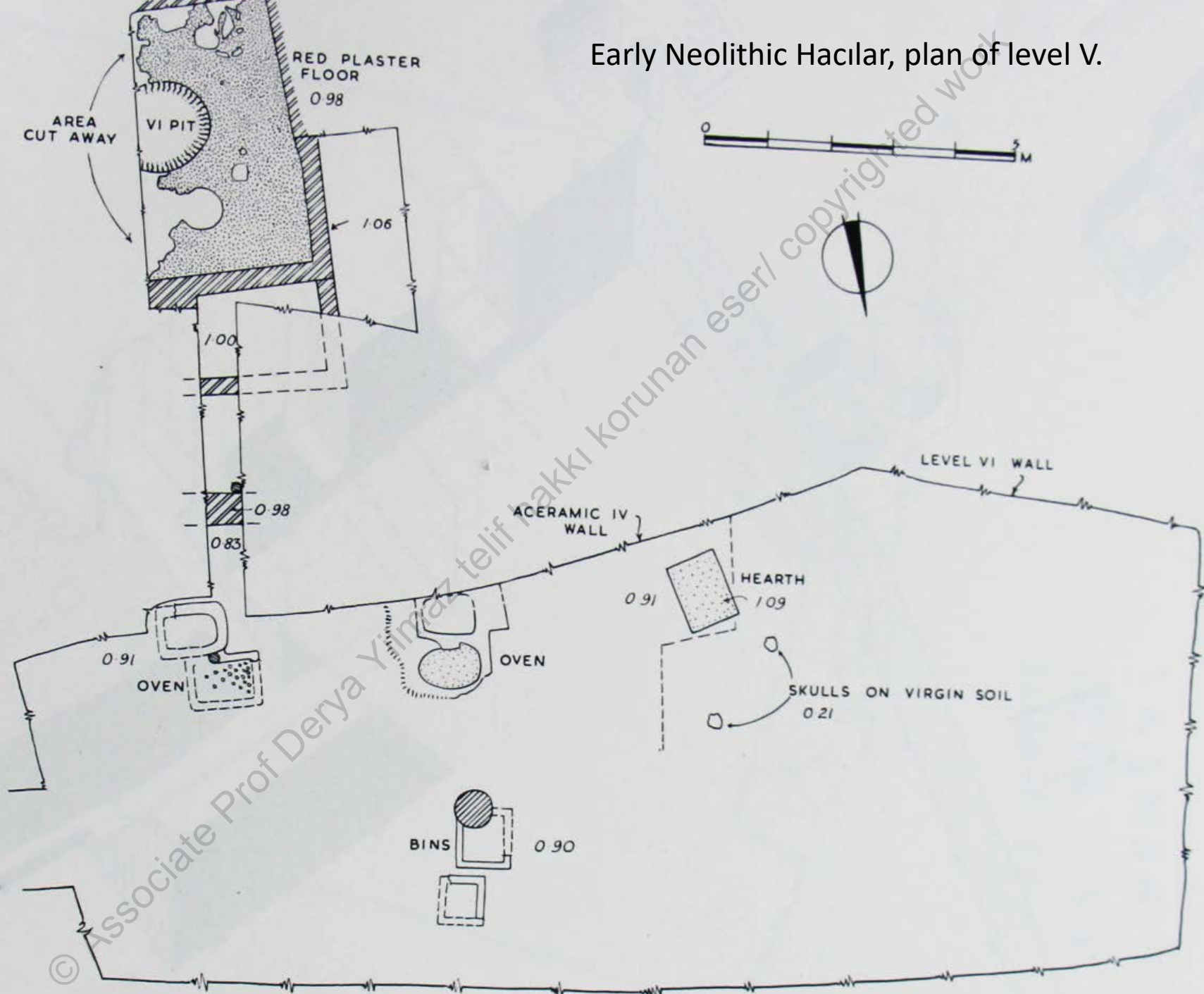


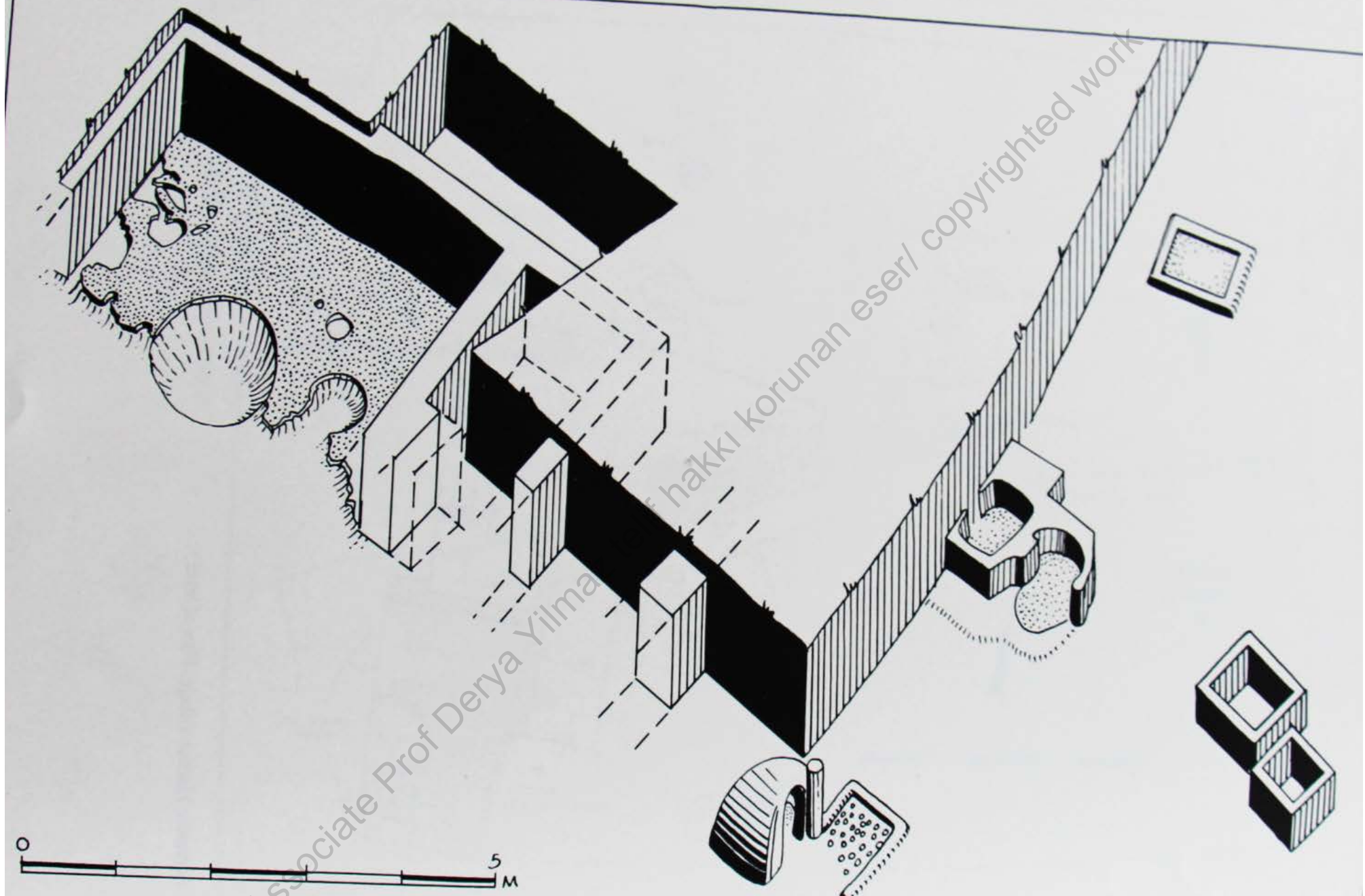
Early Neolithic Hacilar, level IV plan



© Associate Prof. Derya Yılmaz / telif hakkı korunan eser / copyrighted work

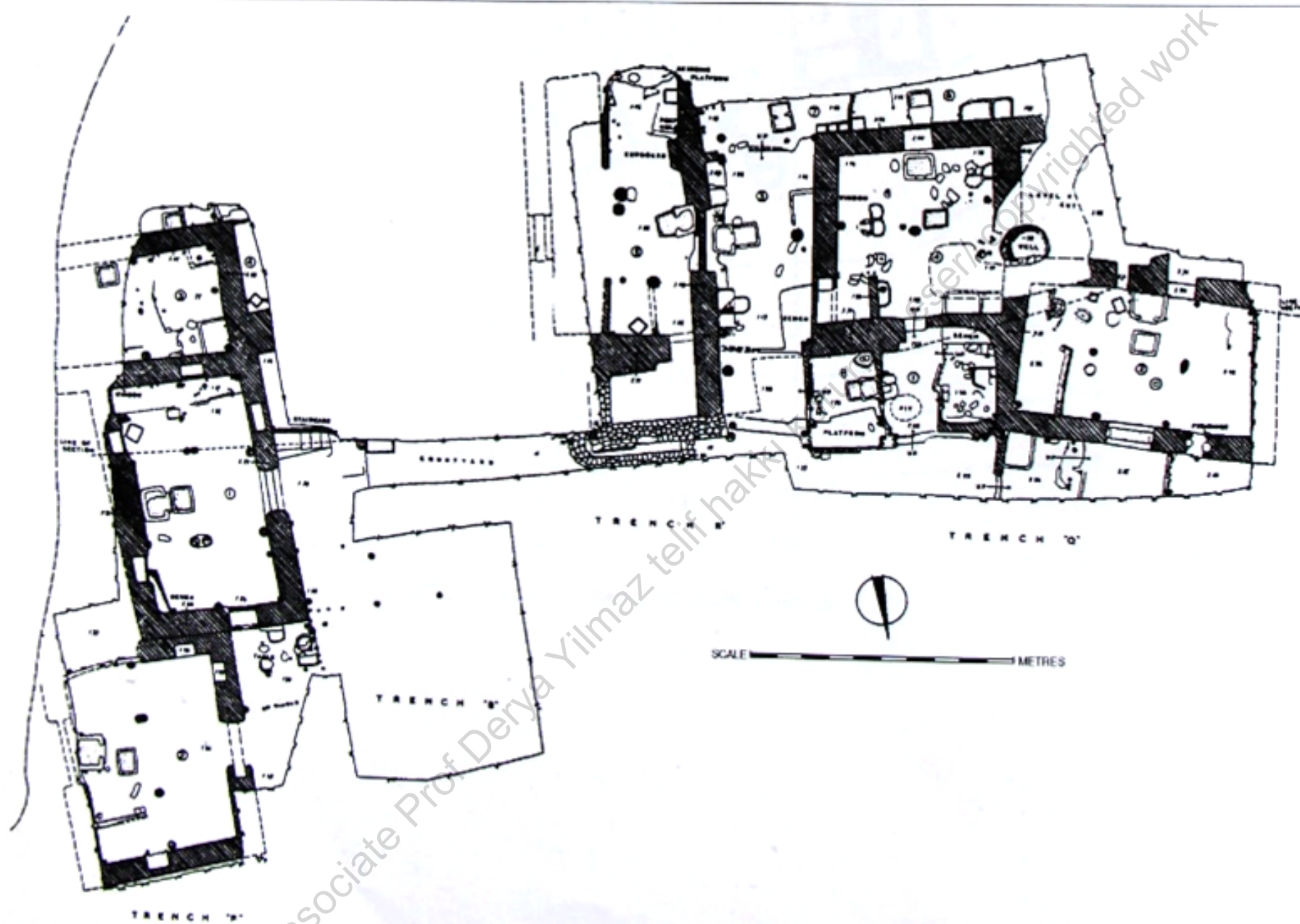
Early Neolithic Hacilar, plan of level V.





Early Neolithic Hacilar village. Isometric drawing of level V.

- After the destruction of Early Neolithic level I, Hhacılar was deserted for a rather long period, not being settled again until the Neolithic Period (Level IX). This reoccupation continued well into Early Chalcolithic times, (Levels VI upward) and can be followed through to the end of Level II. The house walls are of mudbrick, generally built on a single course stone foundations and plastered on the interiors.
- Wood was freely employed, and in some walls, most particularly the interior division walls- a wattle-and-daub technique is seen as well.

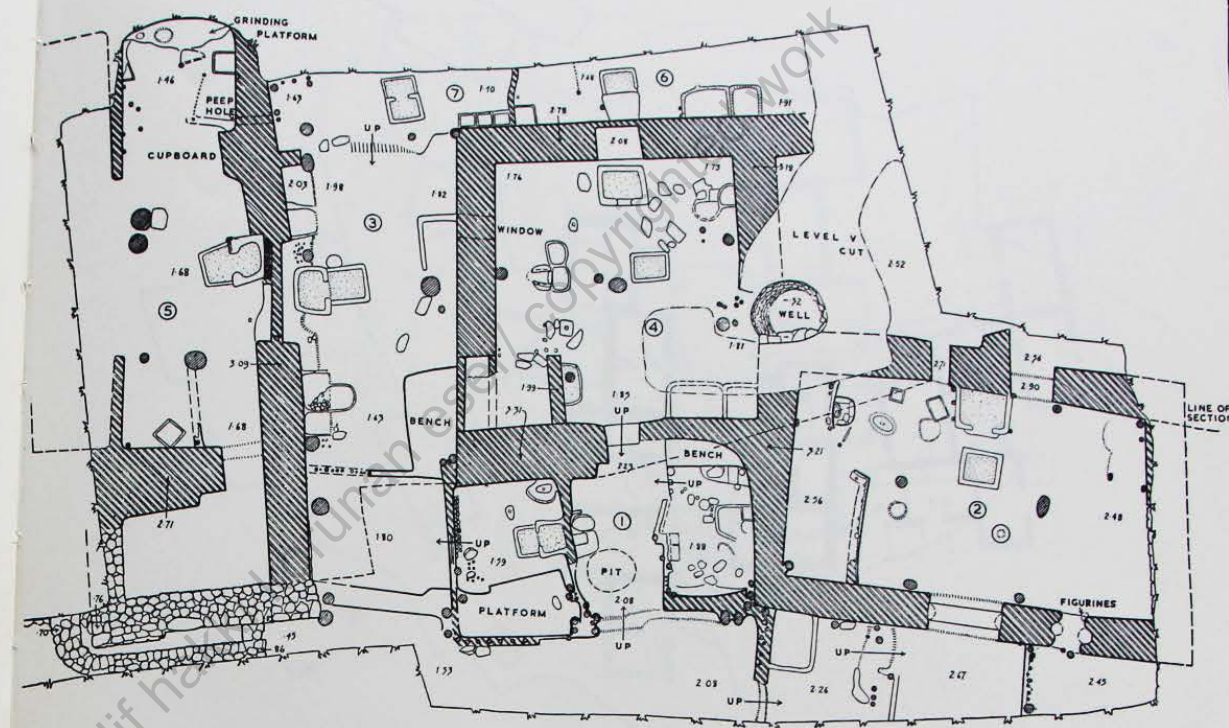
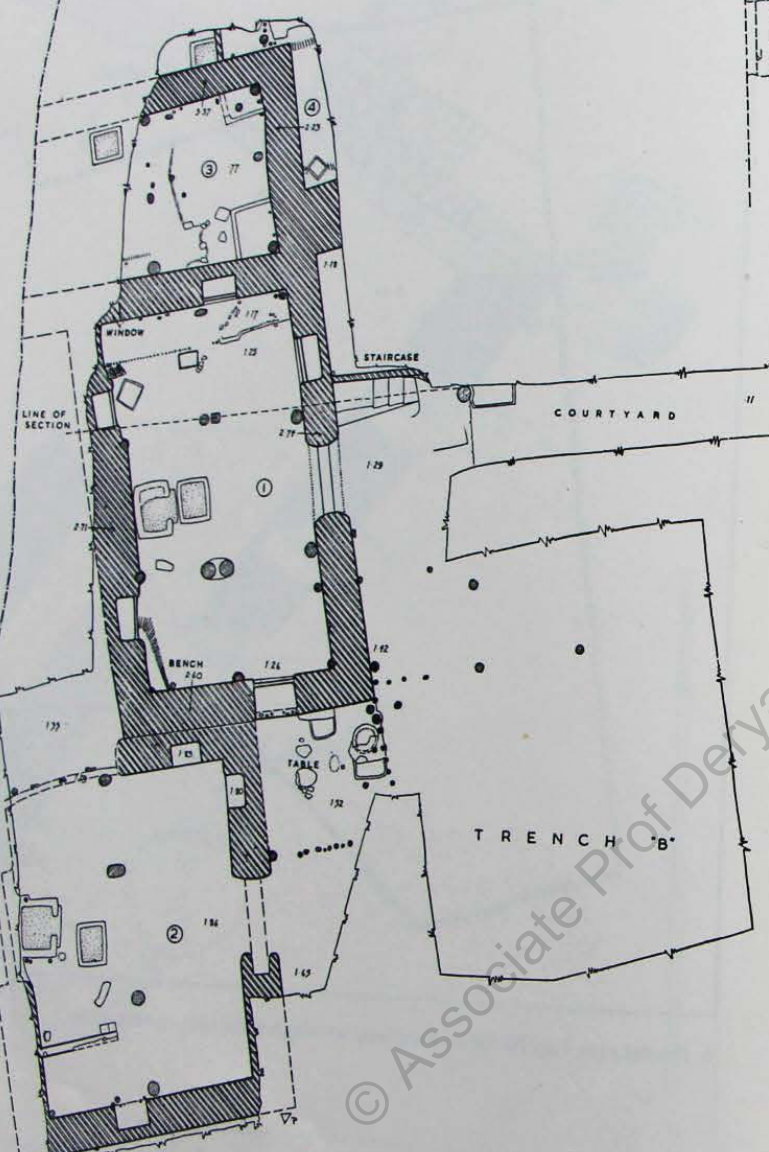


Late Neolithic, Level VI, Hacilar

Late Neolithic - Early Chalcolithic

- The structures were rectangular with the doors usually in the long walls. In nearly every house an oven quadrilateral in plan was found against the other long wall just opposite the door. Interior features include many boxes formed of clay slabs, hearts and niches opened into the walls. It is clear that daily tasks were performed in the open area outside the houses.

LINE OF CUT
LEVEL I BUILDING OPERATIONS



TRENCH R

TRENCH Q



SCALE METRES

7. Hacilar VI. Plan of excavations in the main area (trenches P, B, R, and Q).

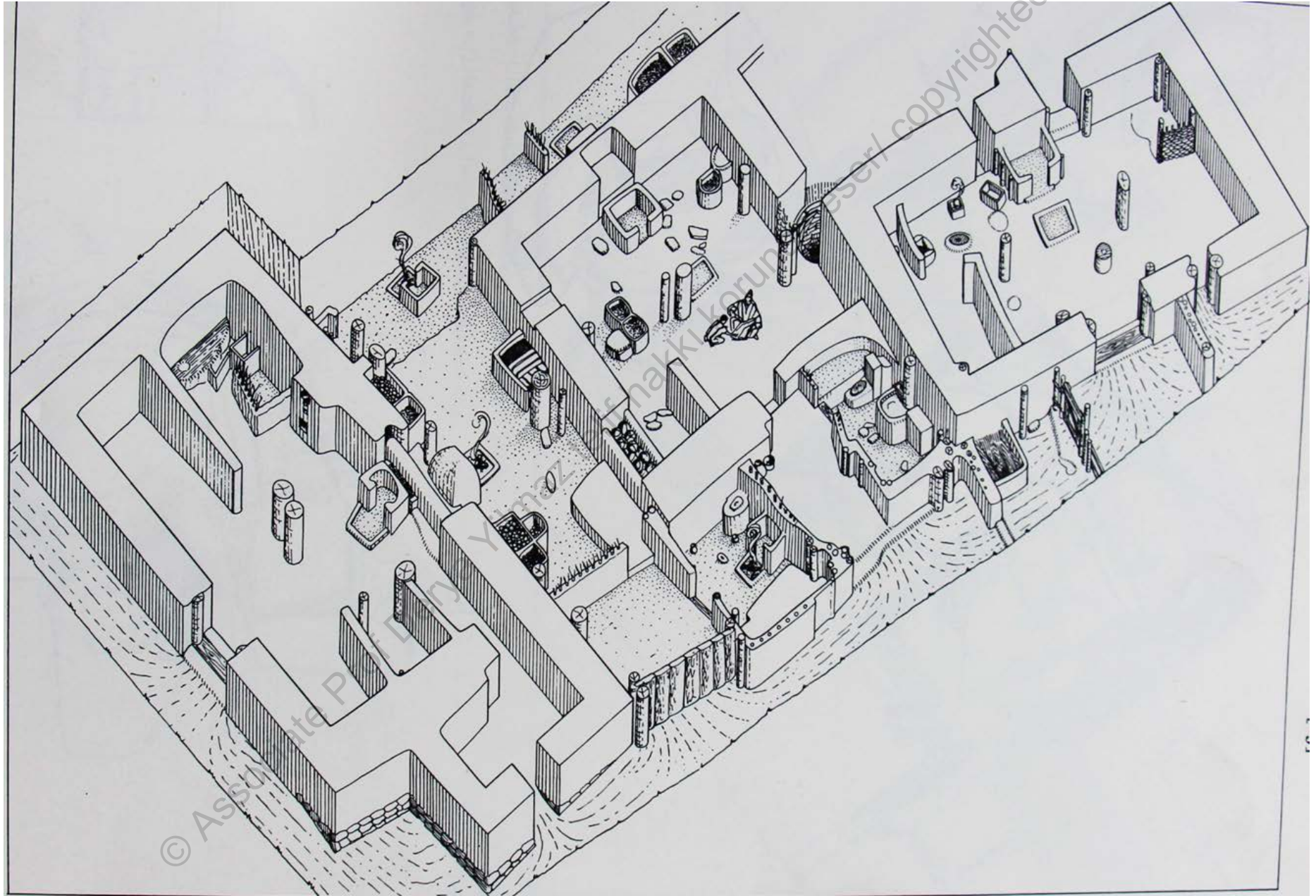
Hacilar VI. Plan of excavations in the main area, trenches P, B, R, and Q.

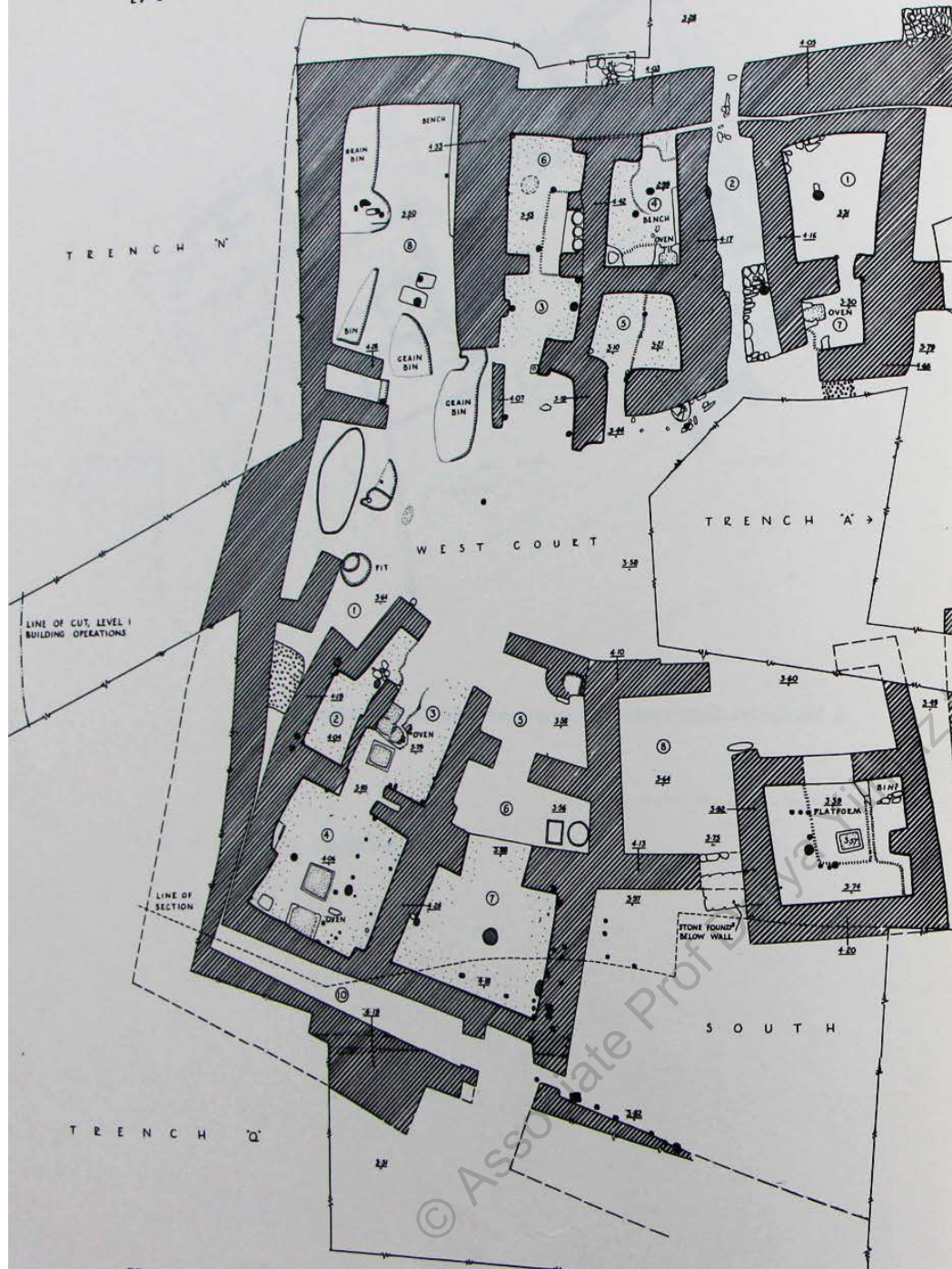


8. Hacilar VI. Plan of soundings.

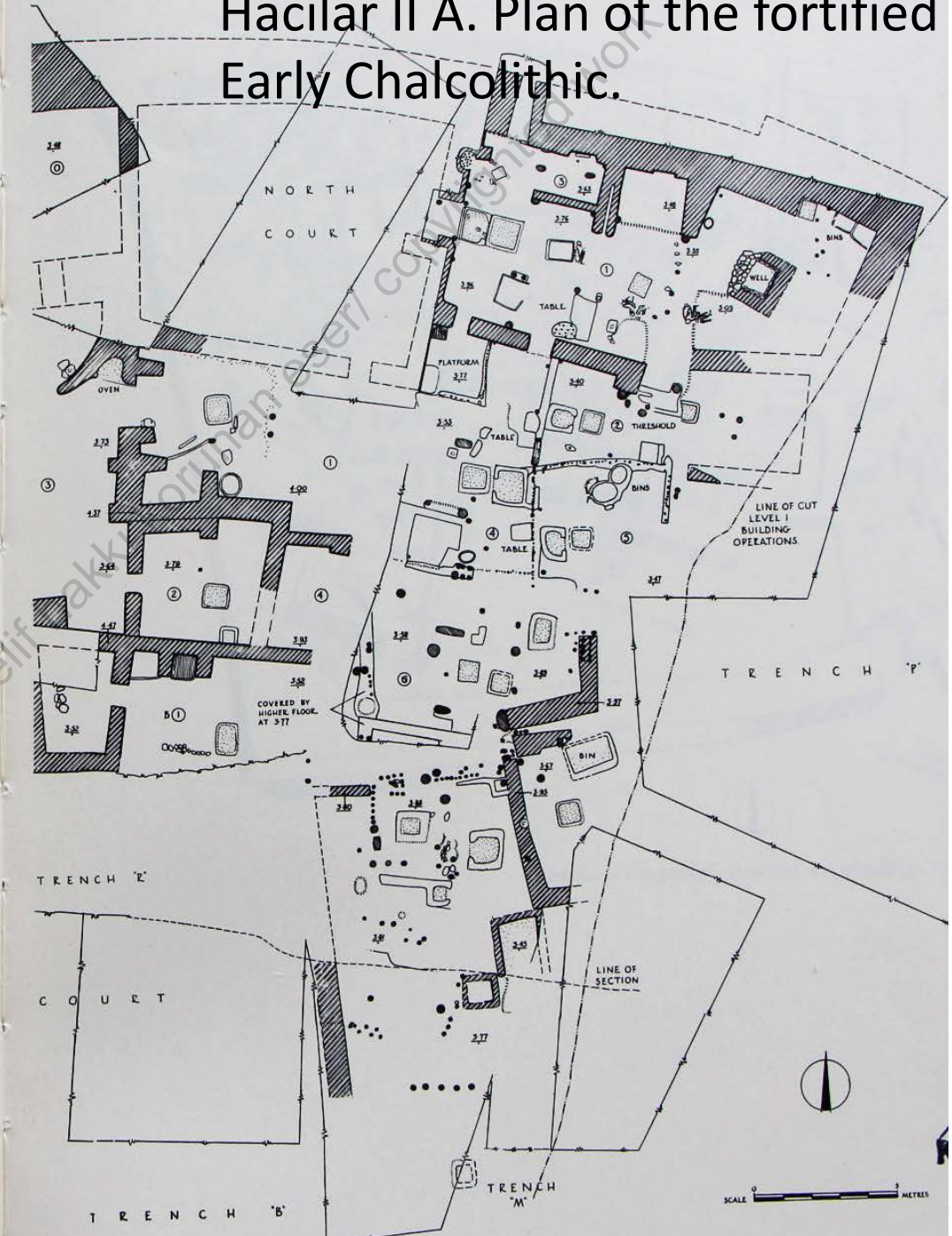
9. (*opposite*) Hacilar VI. Theoretical development of the plan of the village.

Hacılar VI. Isometric drawing of the houses in area Q.

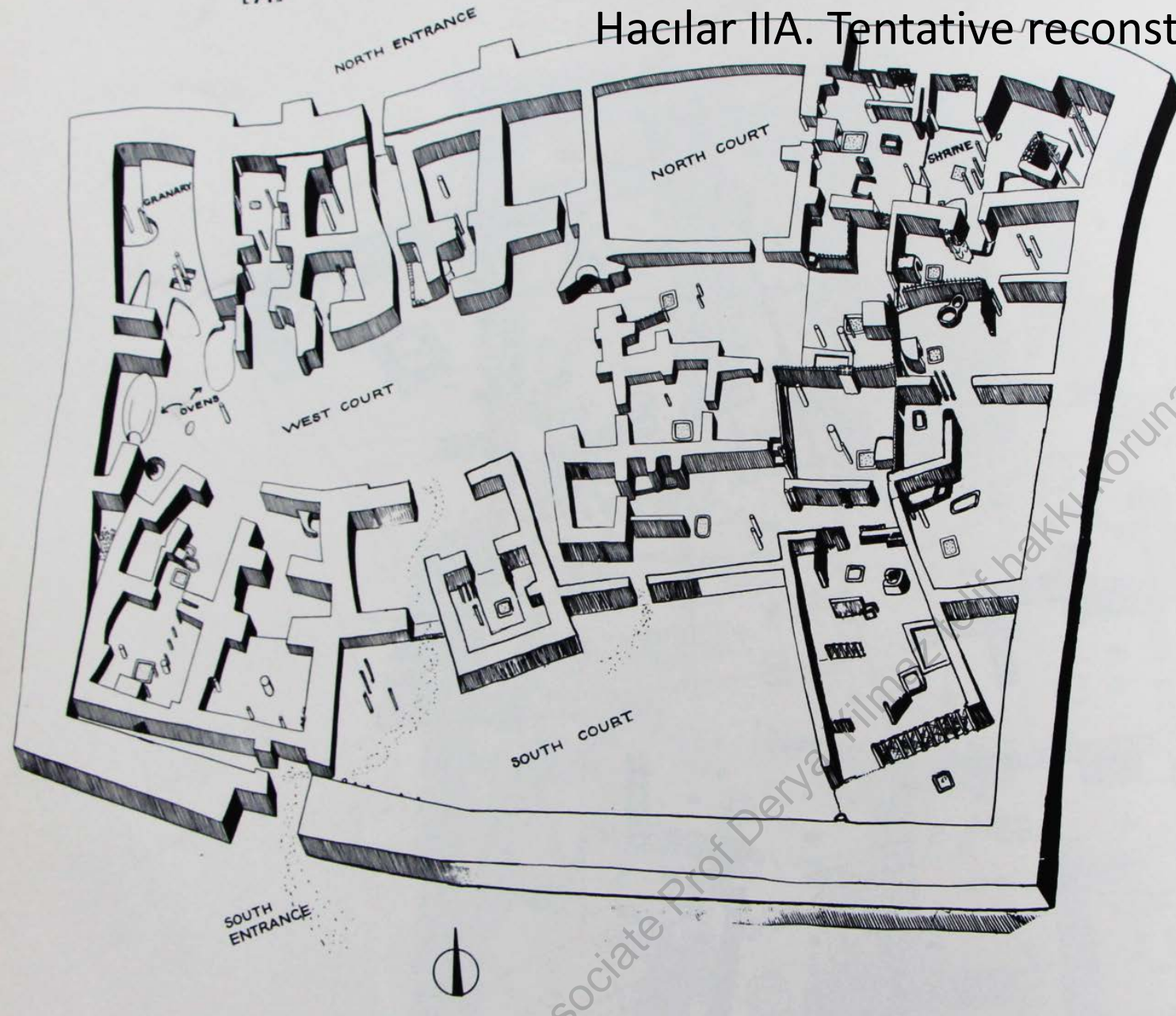




Hacilar II A. Plan of the fortified village, Early Chalcolithic.

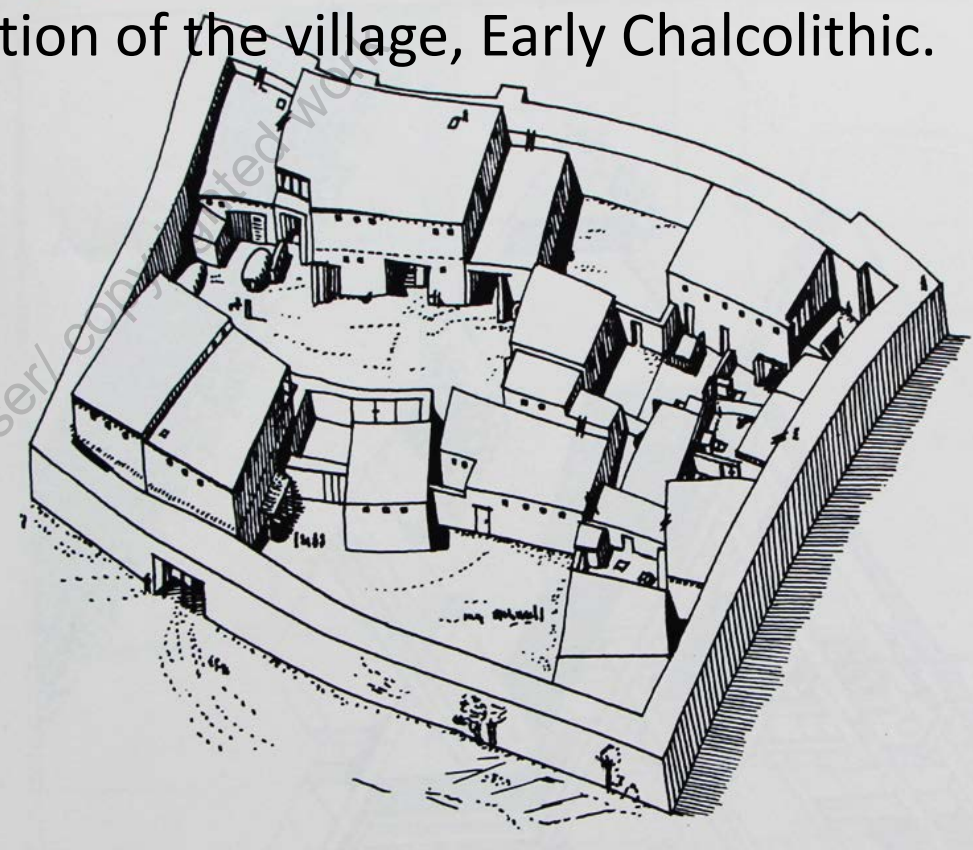


Hacılar IIA. Tentative reconstruction of the village, Early Chalcolithic.



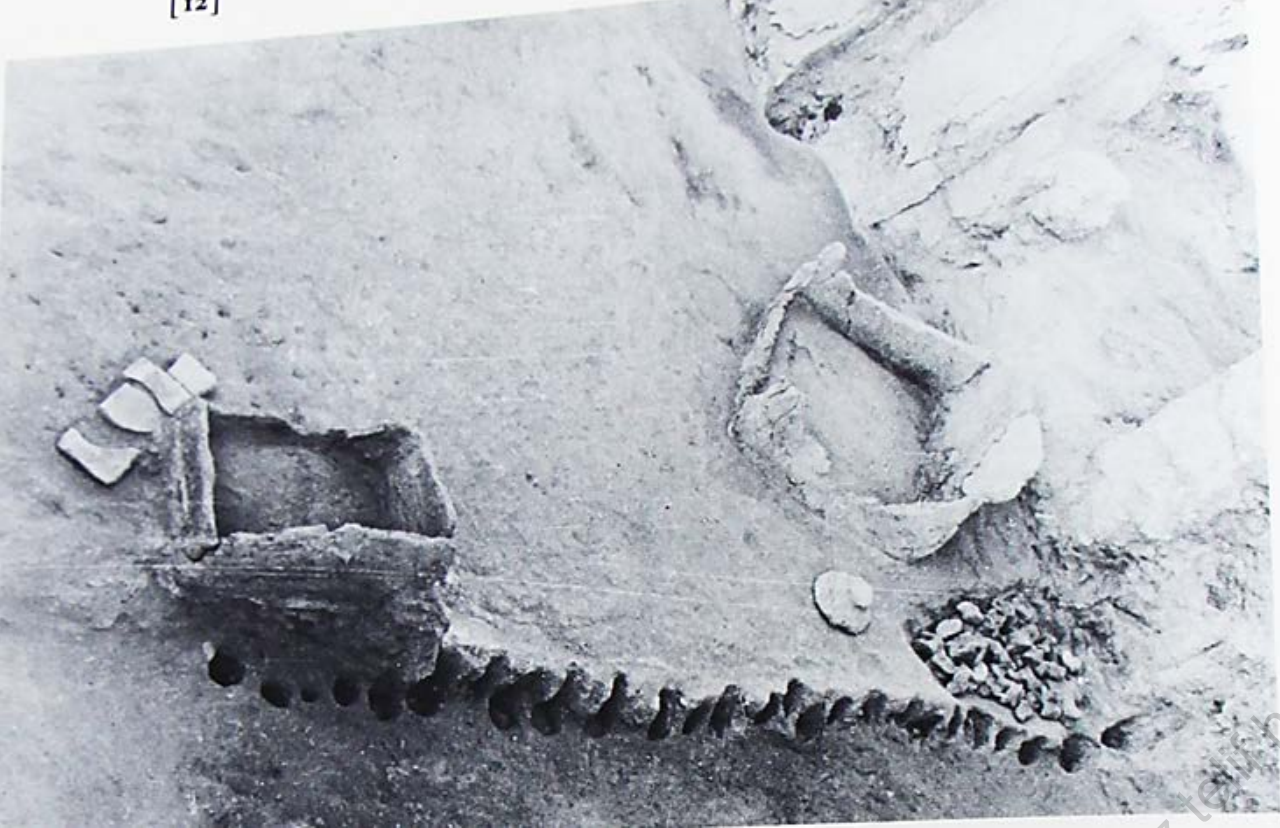
21. Hacılar IIA. Isometric drawing of the village.

Hacılar IIA. Isometric drawing of the village, Early Chalcolithic.



22. Hacılar IIA. Tentative reconstruction of the village.

- Some houses were built next to each other, but still leaving open areas or courtyards between them.



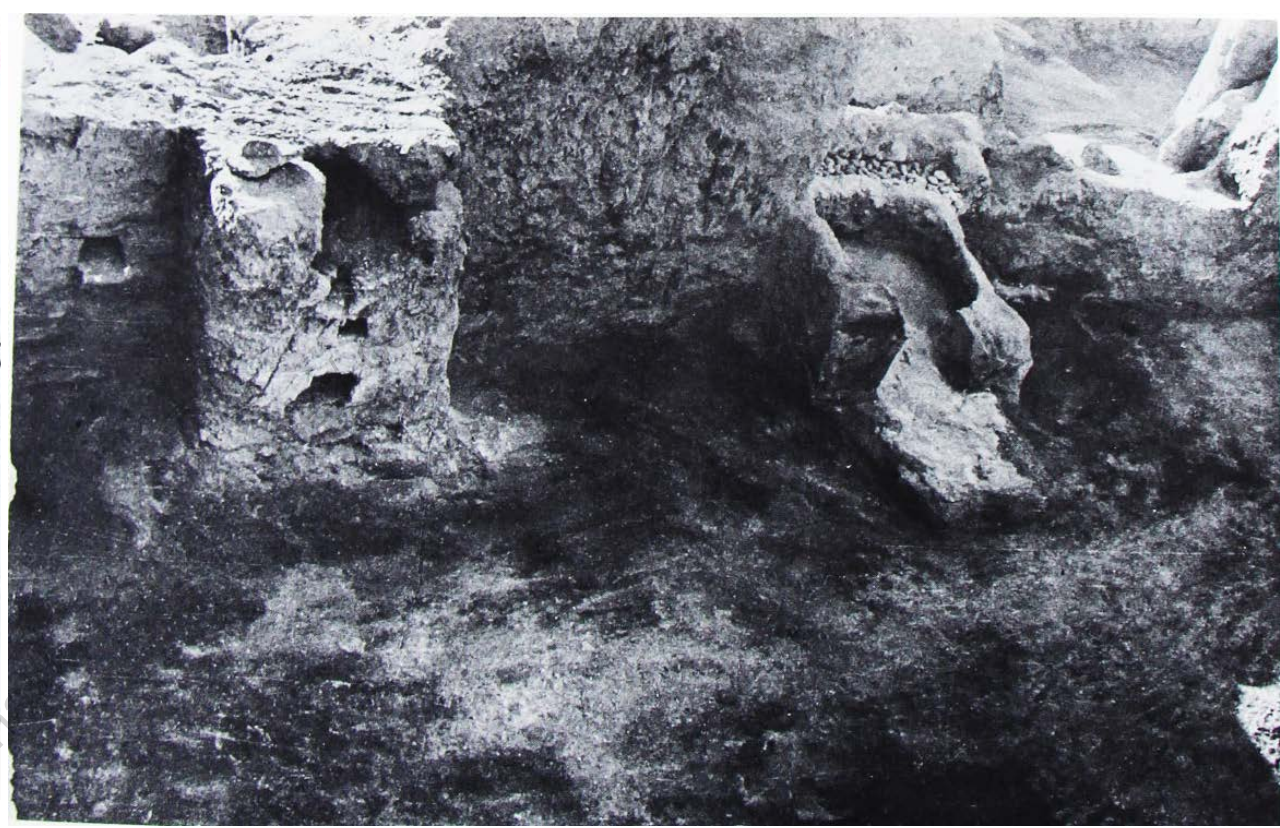
House P.VI.I. Remains of wattle and plaster screen, fireboxes, incense burner, and pile of knuckle bones.



House P.VI.I 3. Grain bins in corners.



House Q.VI.4. Entrance, with kitchen beyond.



House Q.VI.5. West wall with cupboard, and oven (left to right)



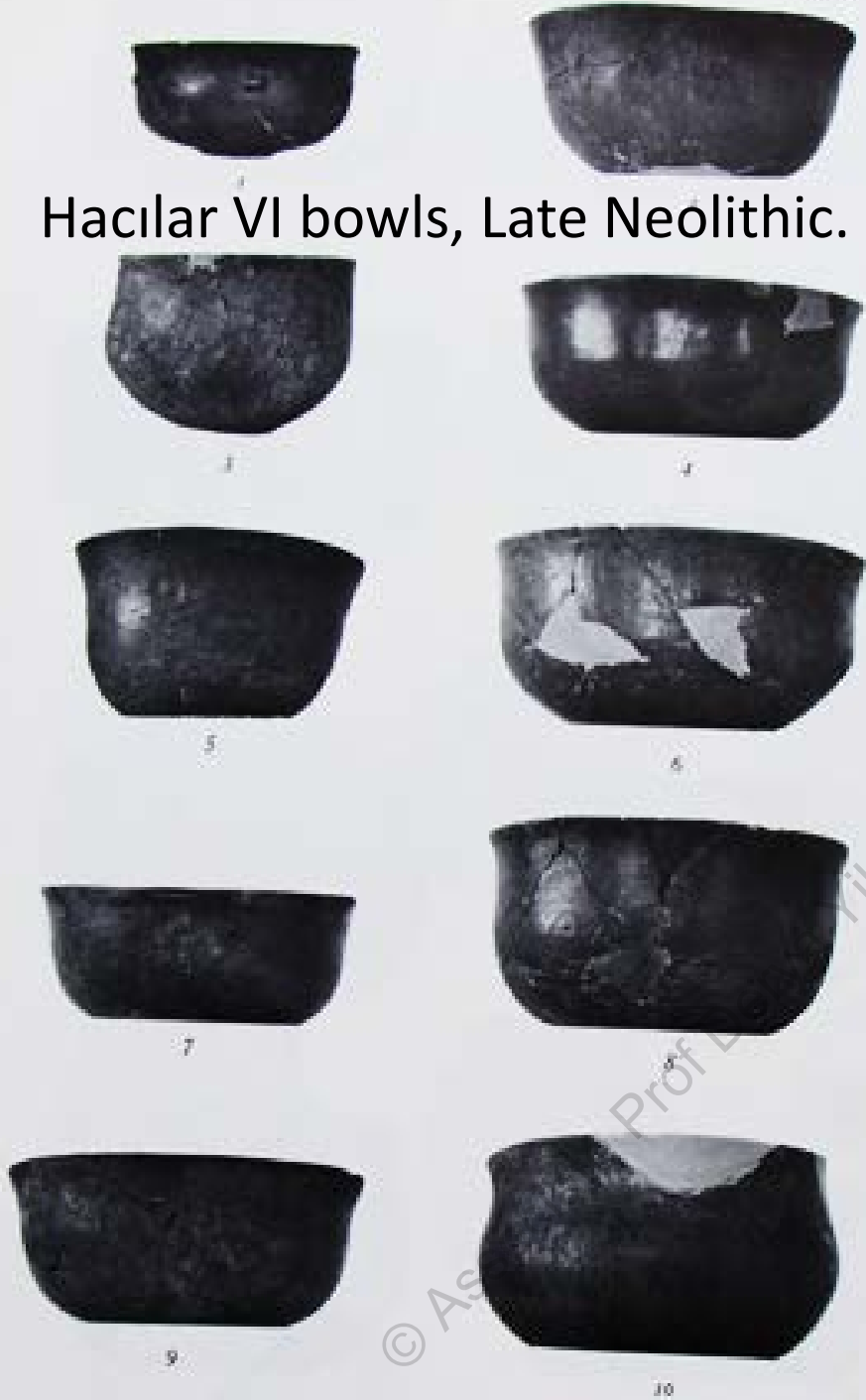
Hacılar IIA Early Chalcolithic Period. Details of domestic courts, partitions, ovens, hearths, bins etc., looking east and south east.

Pottery

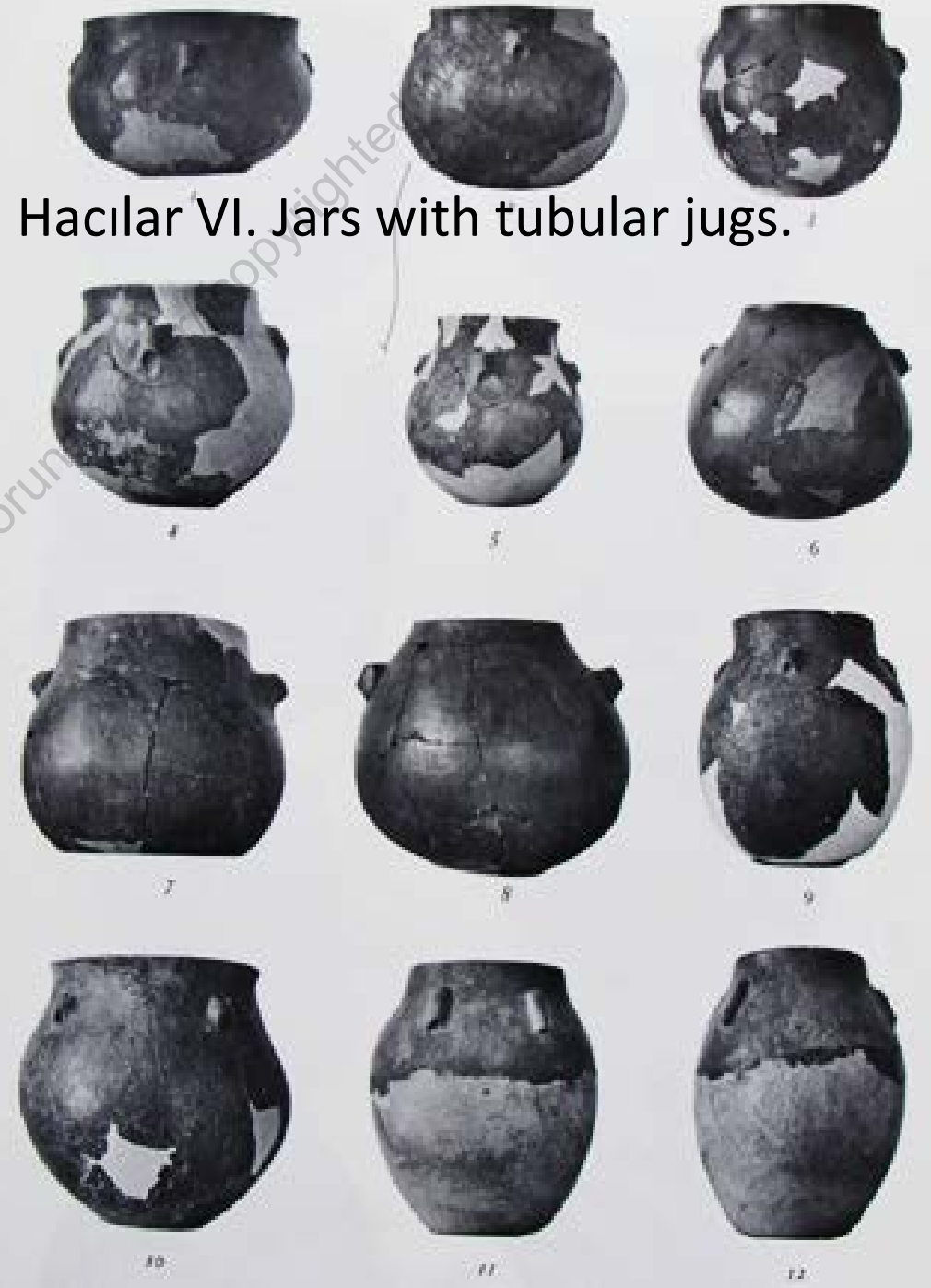
- Early Neolithic pottery has gray to grayish Brown biscuits. The pottery in general is burnished and well fired.
- Late Neolithic pottery generally red-slipped and highly burnished, some vessels with decorative bands of red paint over a cream slip.



Hacılar VI bowls, Late Neolithic.



Hacılar VI. Jars with tubular jugs.





Hacılar VI, Late Neolithic. Theriomorphic vessels.



Hacılar VI. Cup in the form of a woman's head, and miniature theriomorphic vase.

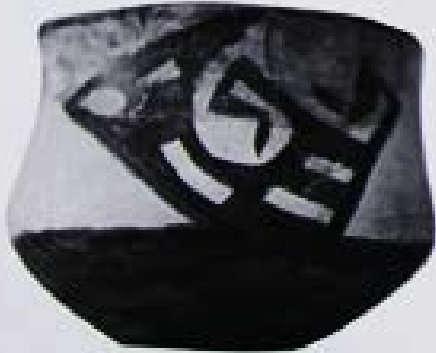




Hacılar IIA painted bowls, Early Chalcolithic.



Hacılar III, and IV (no.5) Painted vessels, Early Chalcolithic





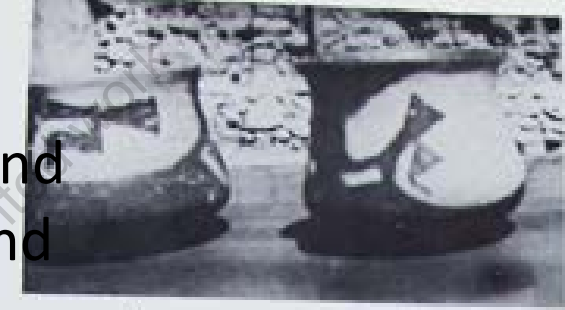
94. Hacilar IIB. Painted ware. Oval cups.

1. R.II. (60/592) Red-brown on yellow slip. Pl. LXXIV:1.
2. B.II. (57/80) Light brown on white slip.
3. A.II.2. Fine light brown on yellow-cream.
4. A.II.2. Dark red to brown on ivory.
5. ? (H. Kocabaş Mus. Istanbul) Light brown on greyish yellow.
6. B.II. Dark red on dead white slip, burnt.
7. N.II.5. (60/647) Very fine red on cream. Pl. LXXX:3.
8. N.II. (west court) Deep red on dead white slip.
9. N.II. (north of granary) Fine red on orange-yellow slip, blurred.
10. A.II.2. (57/135) Deep red on yellow slip. Pl. LXXIII:1.
11. N.II.4. Red on cream, fragment.





Hacilar IIB and Hacilar III
Early Chalcolithic (Nos. 5 and
8). Painted cups, bowls, and
jars.



Hacilar IIA and IIB (no2) Painted jars, Early Chalcolithic.

© Prof Derya Özalmaz telif hakkı korunan eser/ copy right



Early Chalcolithic, Hacilar I and Hacilar II (no.3). Coarse ware potstands and red monochrome ware.



Hacilar I. Painted beakers, etc.





Hacılar I. Painted bowls with basketry or cross patterns, Early Chalcolithic.



Hacılar I. Painted ovoid jars and wide-necked jar, Early Chalcolithic.



Hacılar I. Painted ovoid jars and wide-necked jar.

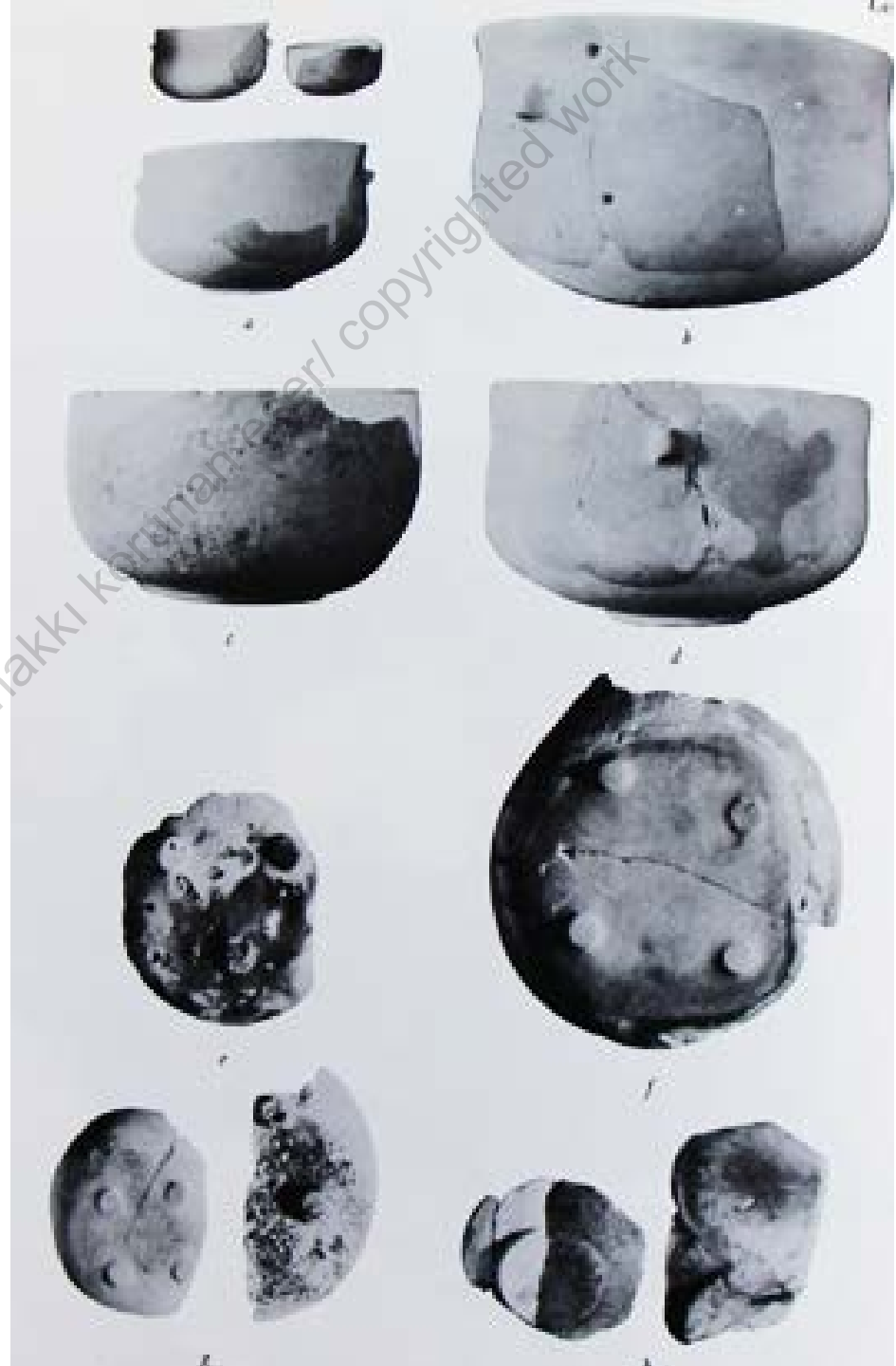
Antropomorphik vessel, Early Chalcolithic



Comparative material: Vessel in the form of a seated goddess. Courtesy Hüseyin Kocabaş Museum, İstanbul.



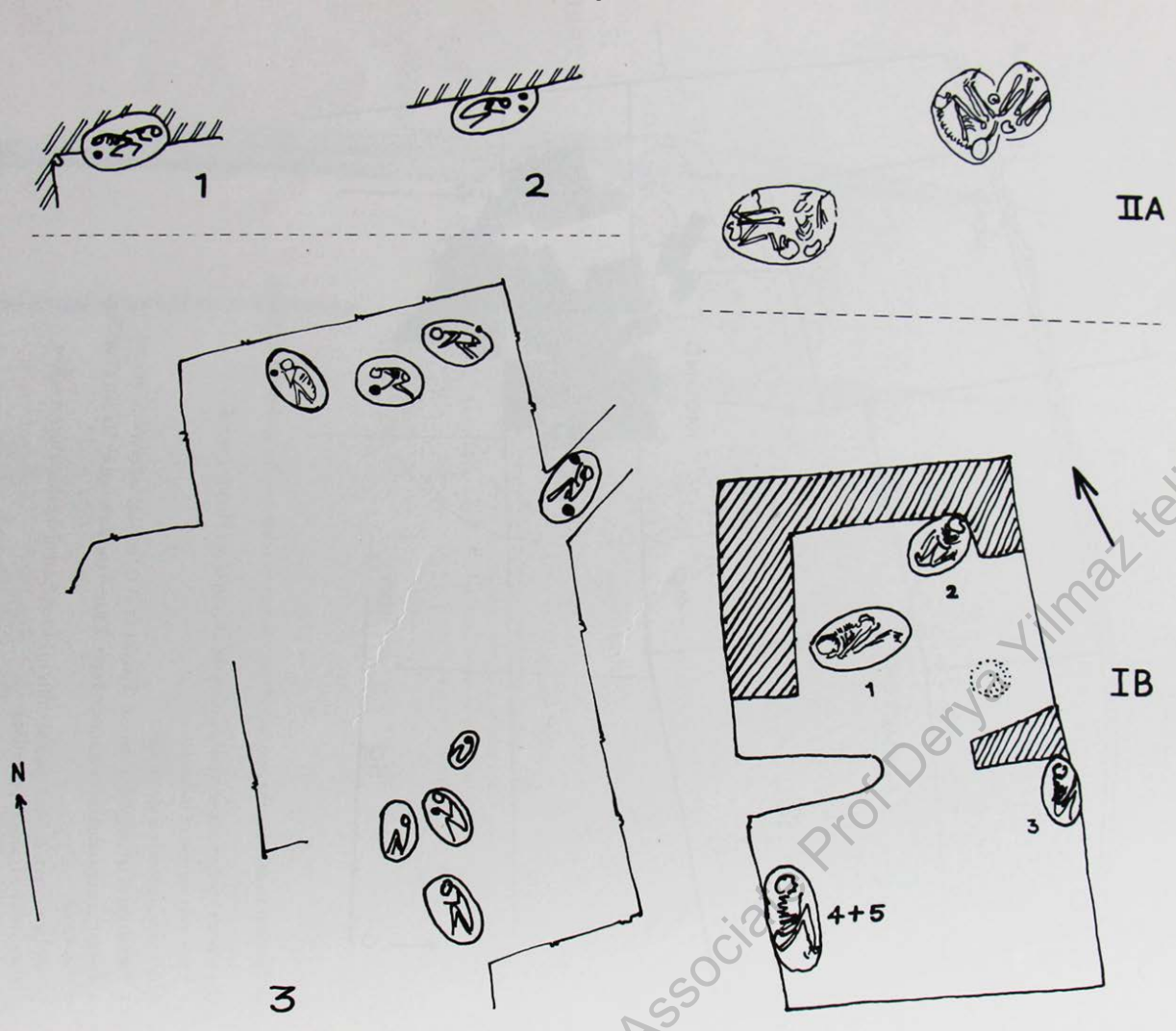
Hacılar VI: White marble bowls, Late Neolithic period.



© Associate Prof Derya Yılmaz telif hakkı korunan eser/ copyrighted work

Intramural burials in Hacilar VI (Late Neolithic)-V (Early Chalcolithic) (nos. 1 and 2) and Hacilar IV (Early Chalcolithic) (no.3)

Sketch plan showing the position of the cemetery in relation to the settlement of Hacilar.



© Associa Prof Derya Yilmaz telif hakkı korunan eser/ copyrighted work

Hacılar IIA, (a) and (b) Burials below the floor of shrine P, II A.I., Early Chalcolithic





Small finds: Early Neolithic Hacilar artifacts. Top row : Fragment of marble bowl and marbles. Second row: obsidian. Third row : flint and bone awls. Bottom row : polished axe and fragments of painted plaster.



Early Neolithic, Hacilar VII. Human skull on pebbles, found on virgin soil.

Small finds: Figures and Idols

- Close to 80 figurines and idols of baked clay were recovered from the Late Neolithic strata of Hacilar.
- The mother goddess figures, nearly all from three houses in level VI, are remarkably naturalist representations.

[183]

Level VI, House Q.VI.5,
statuette 571. clay
goddess



[185]

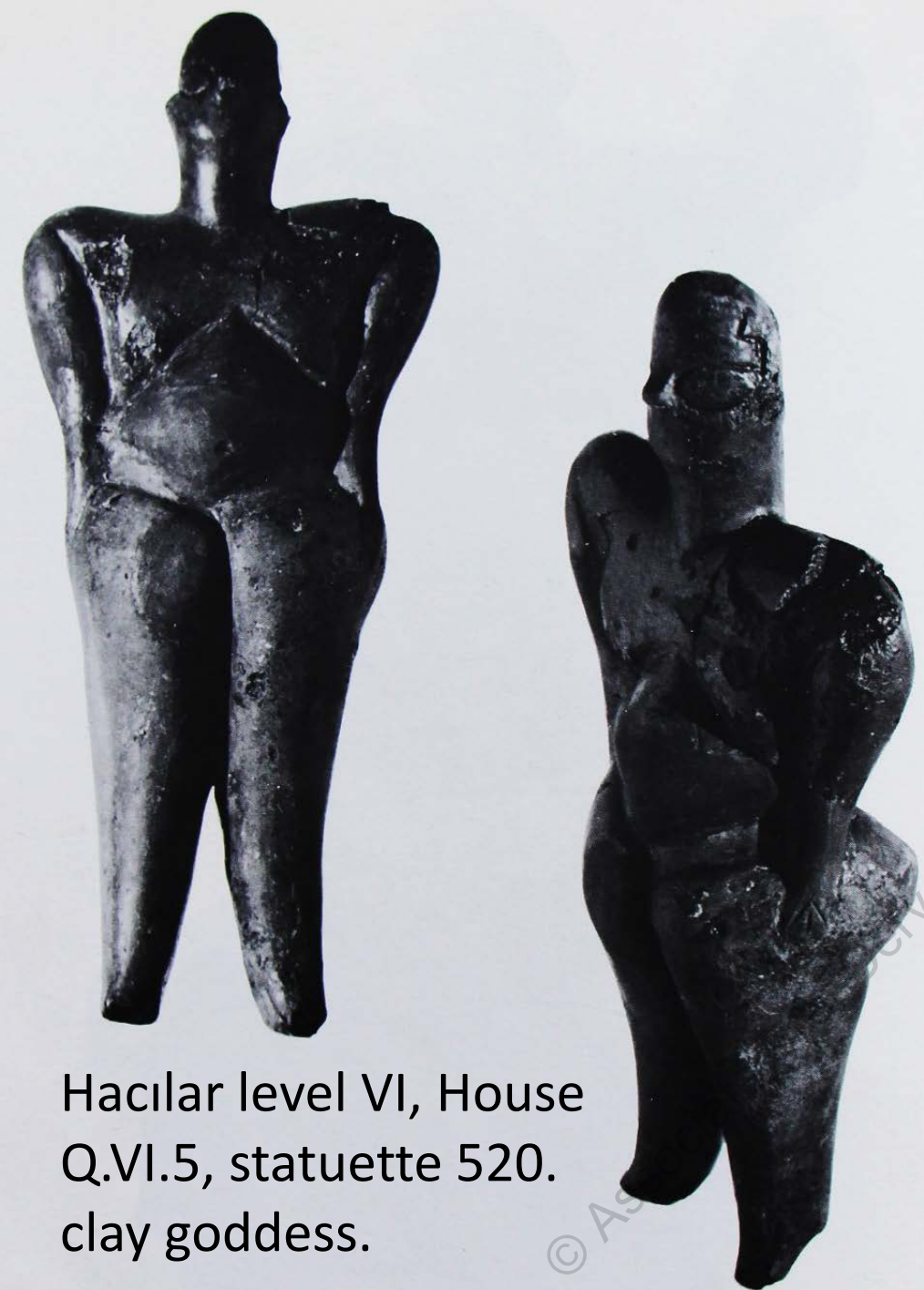
Level VI, House Q.VI.5,
statuette 525, clay
goddess.



iate Prof Derya Yilmaz

akk. Arunan

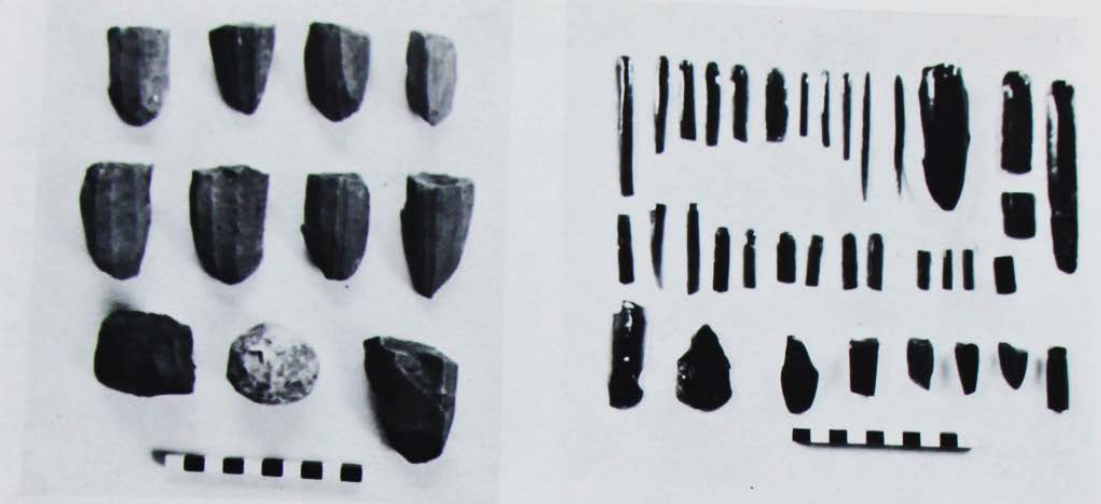
righted work



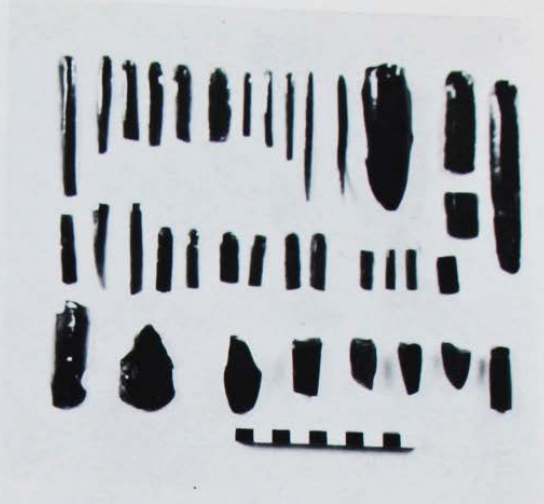
Hacilar level VI, House Q.VI.5, statuette 520. clay goddess.



Level VI, House P.VI.I, flat clay figure.



a



b



c



d



e

Hacilar levels VI and I-II: stone industry.

(a) Group of chert cores and limestone pounder, house Q.VI.6.

(b) Blades and cores in obsidian, Hacilar I-II.

(c) Polishers of various forms, Hacilar VI.

(d) Polished axes, Hacilar VI.

(e) Polished axe in antler handle, Hacilar VI.



Hacılar levels II, IIA and IIB.

Hacılar polished stone industry.

(a) Grooved stones.

(b) Polished axes, chisels, and miniatures, Hacılar II.

(c) Clay mould and pestles, house B.II.A.

(d) Querns for the preparation of paint, house A.IIB.2.

(e) Rubbing stones and palettes from pottery workshops, A.IIB.1 and 2.

(f) Mortars from A.IIB.1.





a



b



c

Baked clay stamp seals from Hacilar II
(a to c) Early Chalcolithic
and 'Pseudo-seals' from Hacilar I (f to g)



d



e



f



g

Antler sickles and bone spatulae from Hacilar VI, Late Neolithic.



Levels I-IV. Bone, antler, and clay objects.

(a) Bone Spatulae fragments, Hacilar II and I.

(b) Bone objects, Hacilar II and I.

(c) Polished buff pottery spoon, Hacilar IIB, house A.I.

(d) Polished Brown pottery wristguard (?), Hacilar III.

(e) Miniature axes in antler sleeves, Hacilar IV.

(f) and (g) Antler belt hooks (?), Hacilar II.

(h) Polished antler object, Hacilar.



Selected References

- Mellaart, J., 1970, *Excavations at Hacilar*, The British Institute of Archaeology at Ankara, Edinburgh University press, Edinburgh.
- Duru, R., 1999, « The Neolithic of The Lake District», *Neolithic in Turkey Cradle of Civilization New Discoveries*, edt. By. M.Özdoğan, N. Başgelen, Arkeoloji ve Sanat Yayınları, İstanbul: 165-193.