

KLA 120
ANTİK MİMARİDE MALZEME - TEKNİK

3. Hafta

KLA 120

ANTİK MİMARİDE MALZEME - TEKNİK

. TAŞ

. DUVAR ÖRGÜSÜ

YAPI MALZEMESİ

TAŞ:

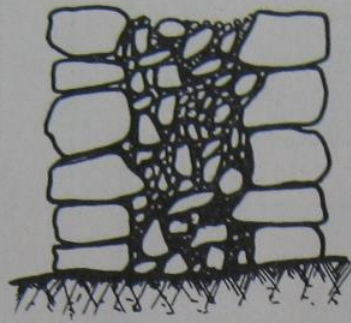
Yapıların inşasında her çeşit taşın kullanıldığını görebiliriz.

Taşın çeşidini çevrenin jeolojik yapısı belirler

- Mermer
- Kalker
- Konglomera
- Breş
- Granit
- Gneis
- Trakhit
- Andesit
- Tufa



1.



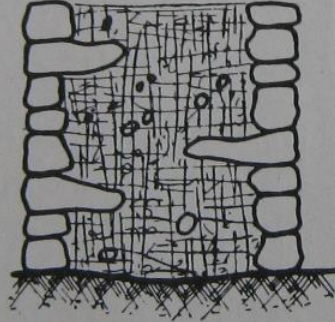
2.



Korint Surları



3.

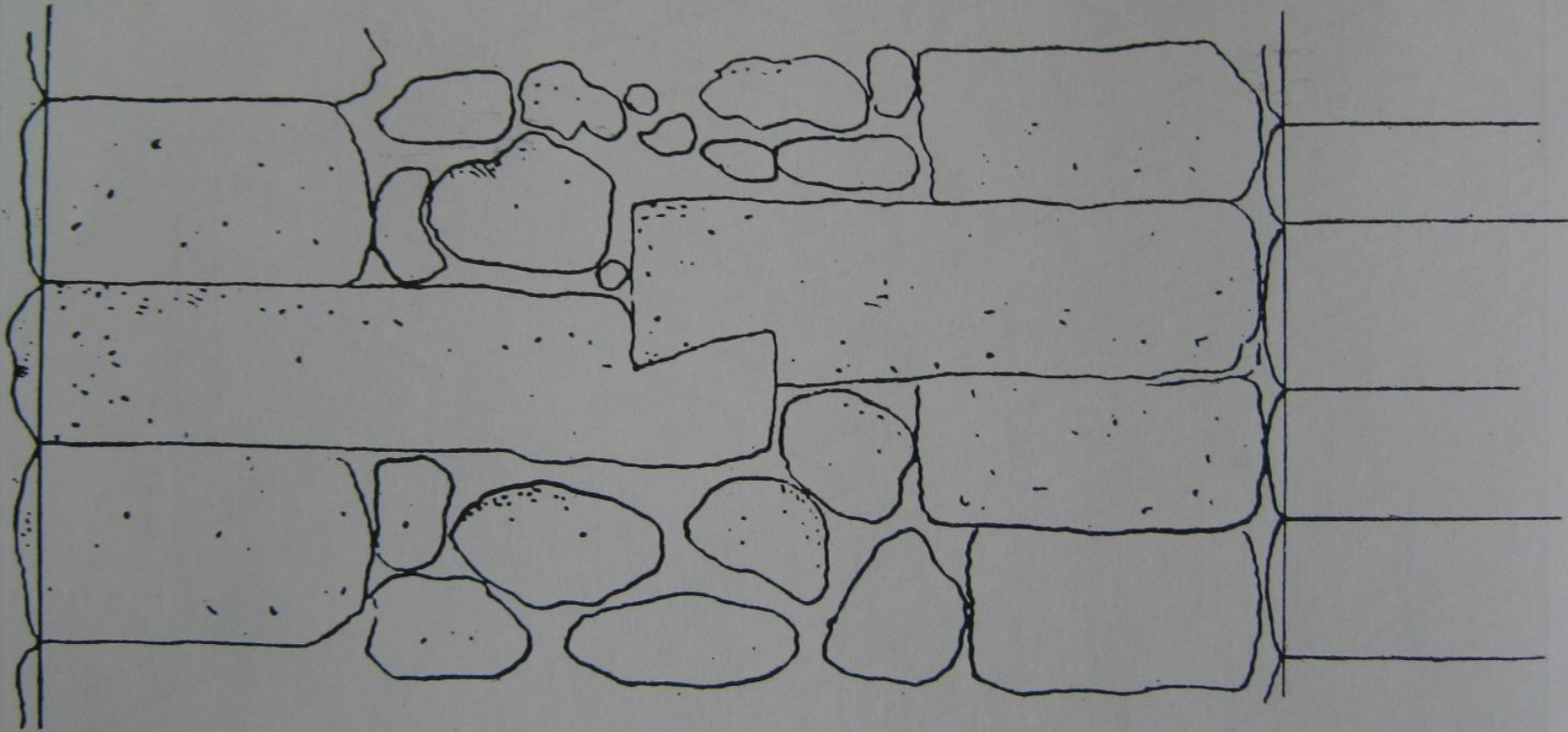


4.

1. SADE DOLGU
2. ÇİFT DUVAR ÖRGÜLÜ
3. ATKILI
4. BÖLMELİ



A-A KESİTİ

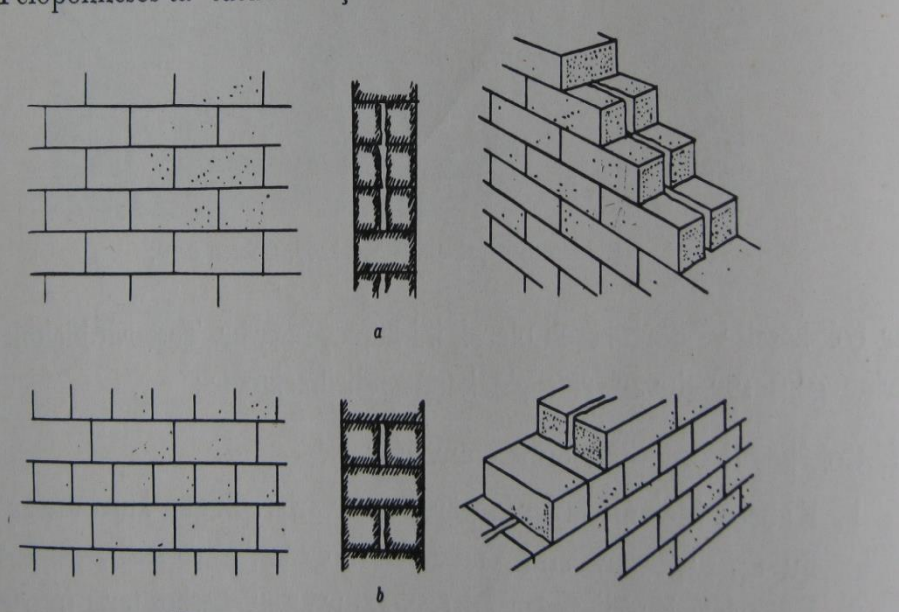


0

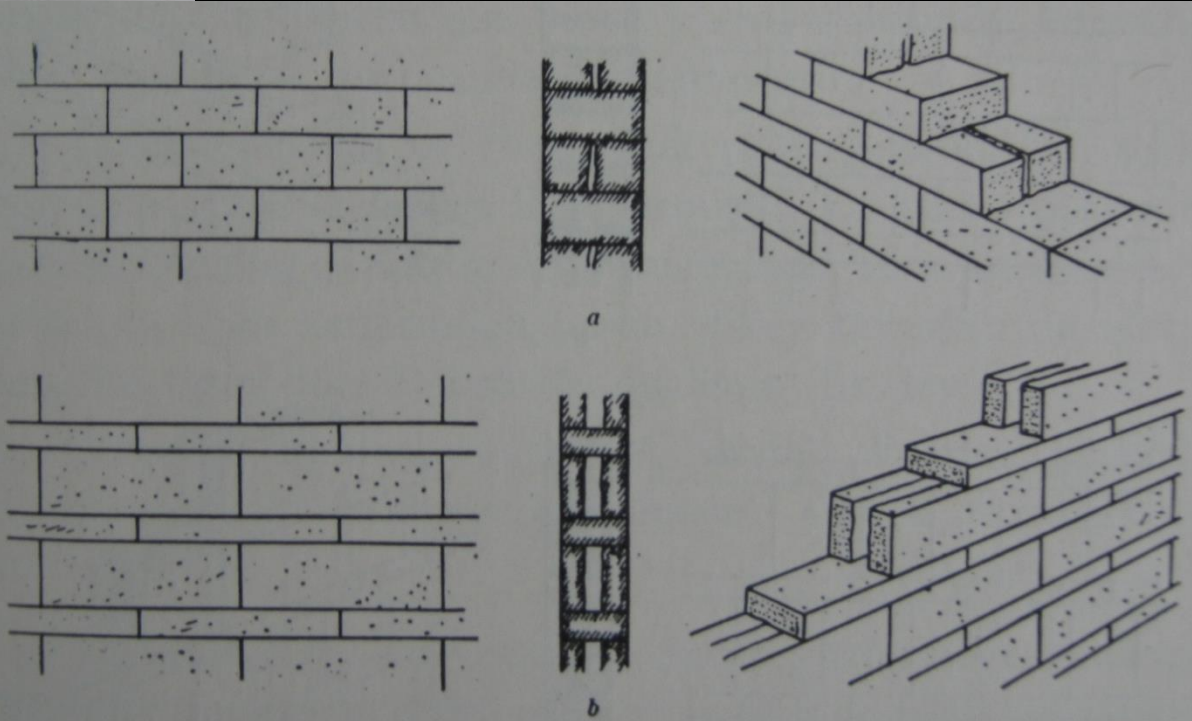
2.M



63. Assos. Dolgulu ve atkılı duvar örgüsü, kesit.



Dikdörtgen taş duvarlar. Isodomos örgü: a. iki boy taşla, b. tek boy taş



66. Dikdörtgen taş duvarlar. Isodomos (a) ve pseudo-isodomos (b) örgü.



64. Menemen yakınında Yanıkköy. Çokgen örgü.







14. Keramos, düz kenarlı çokgen örgü, Hellenistik çağ

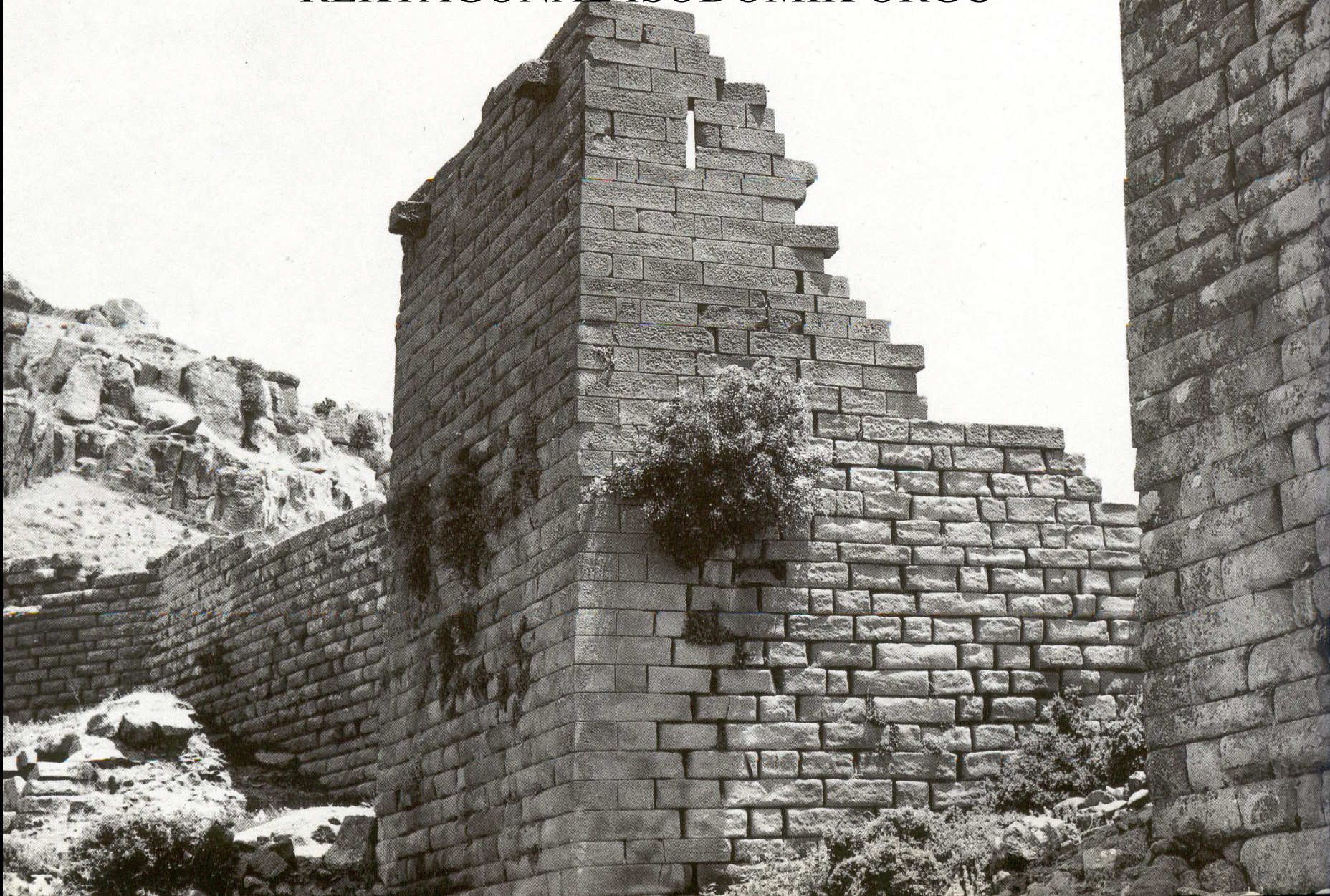
ALİND A AGORA STOASI

Atkılı yalancı isodomik örgü



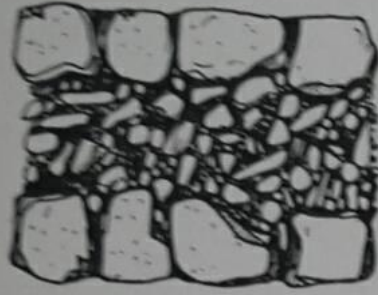
ASSOS KENT SURU

REKTAGONAL İSODOMİK ÖRGÜ

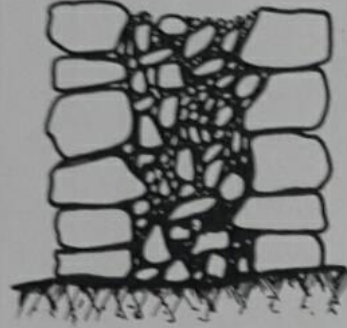


DUVAR TİPLERİ

olan Megalopolis surları da aynı teknikte ve aynı kalınlıkta yapılmıřtı. Aynı tarihlerde inşa edilmiř



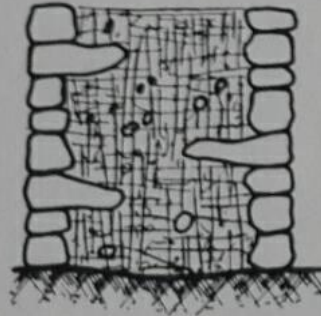
1.



2.



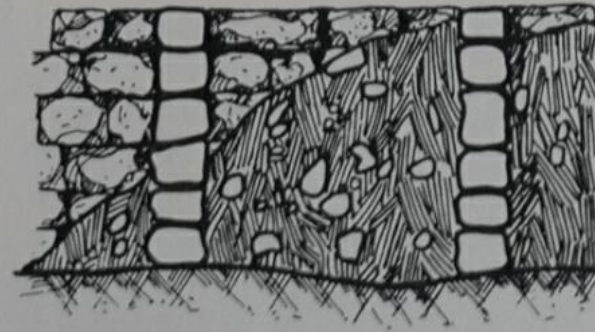
3.



4.



1. SADE DOLGU
2. ÇİFT DUVAR ÖRGÜLÜ
3. ATKILI
4. BÖLMELİ

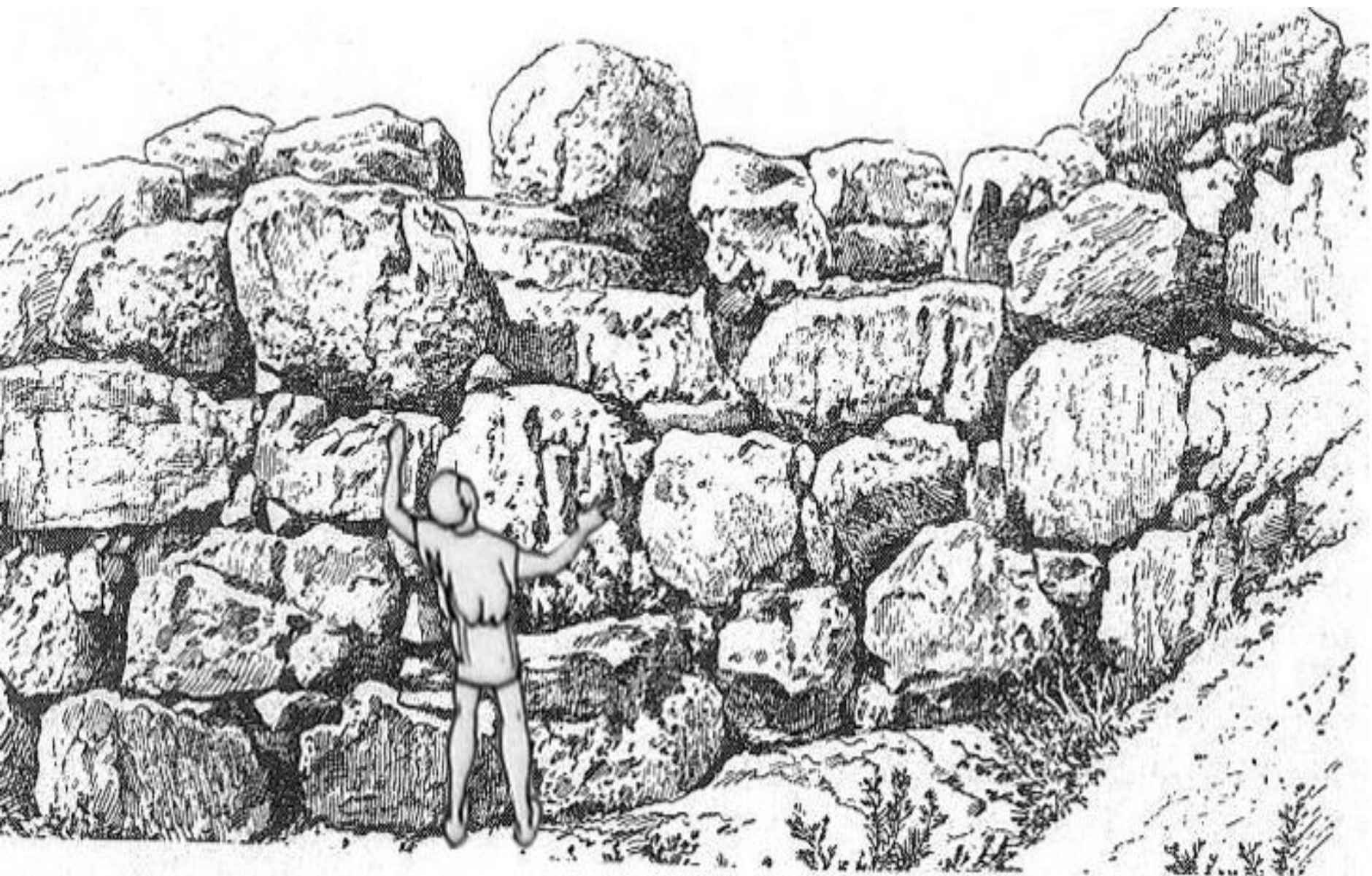


A-A KESİTİ









Resim 26. Kyklopien tarz duvar örgüsü, (Orlandos 1968, 181, Fig. 159)









ASLANLI KAPI
M.Ö. 1250

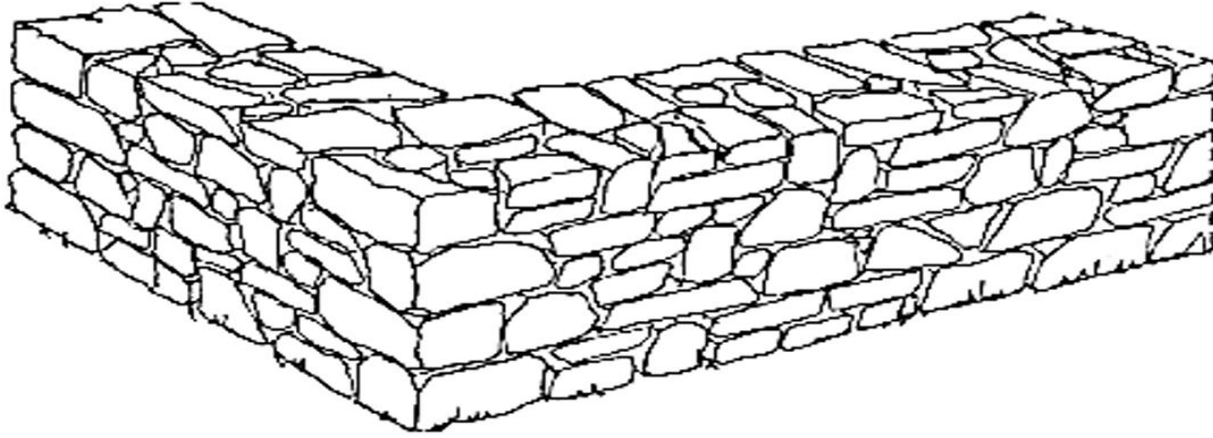
MYKENAE, ASLANLI KAPI (M.Ö. 1250)

W. Dörpfeld –
H. Schliemann



A. HARÇSIZ MOLOZ TAŞ DUVAR (Kuru Duvar)

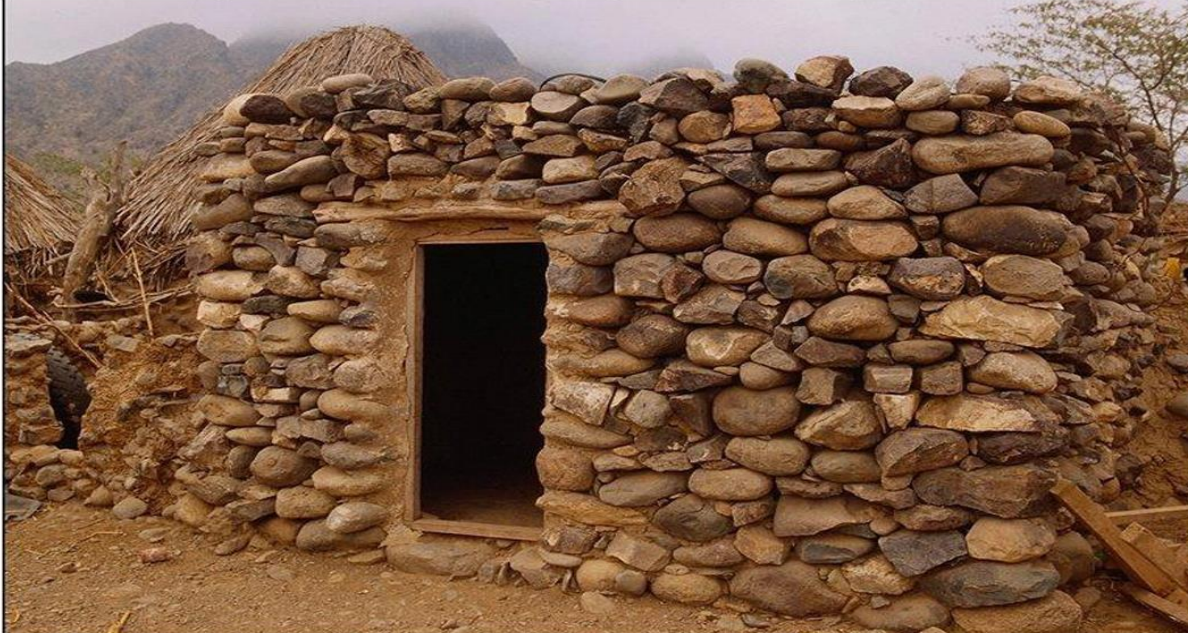
Yük taşımayan bahçe ve çevre duvarı, istinat, su kuyusu, fosseptik ve ağırlık duvarlarında uygulanır.



Celal Bayar Üniversitesi Turgutlu MYO.

Öğr. Gör. Tekin TEZCAN

A. HARÇSIZ MOLOZ TAŞ DUVAR (Kuru Duvar)

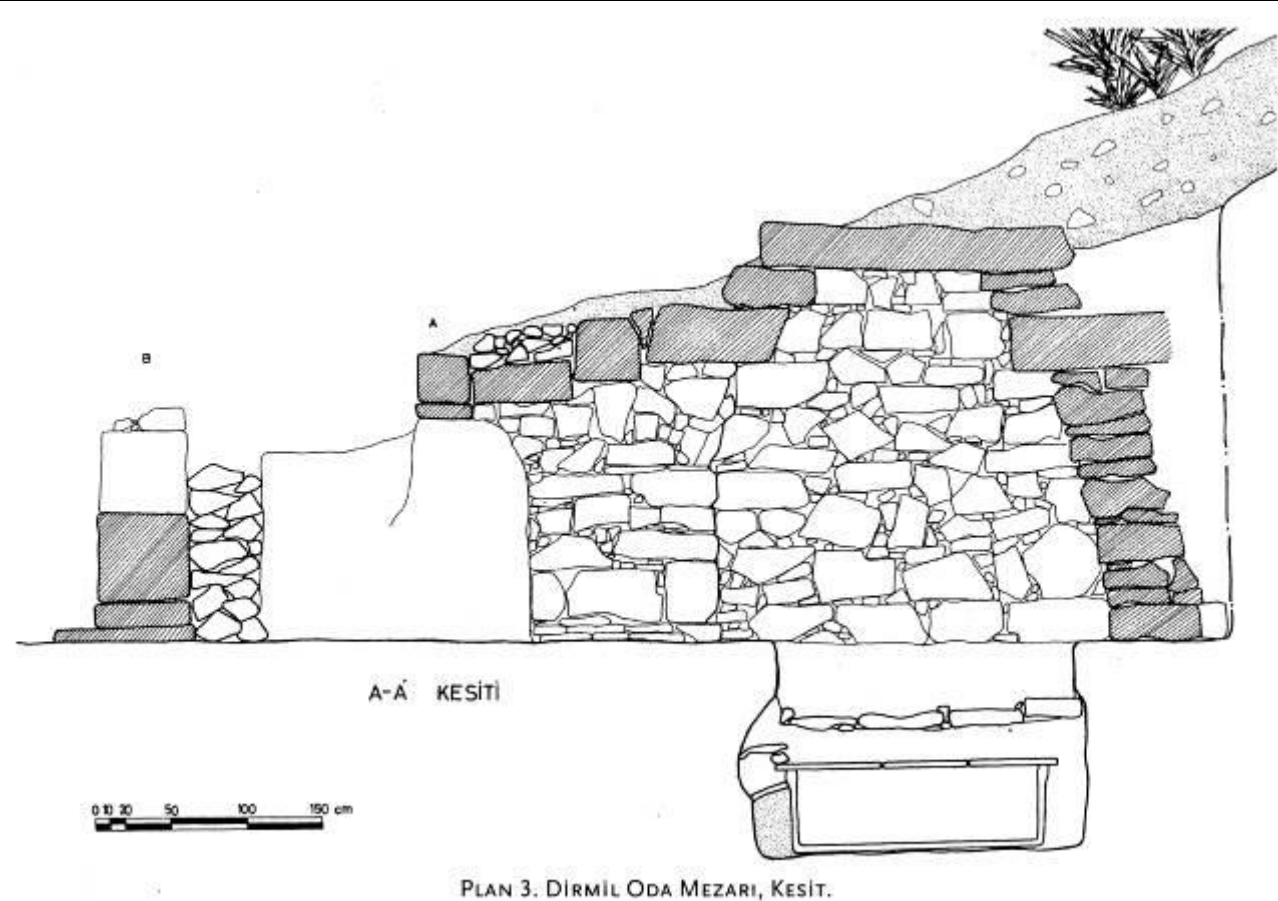
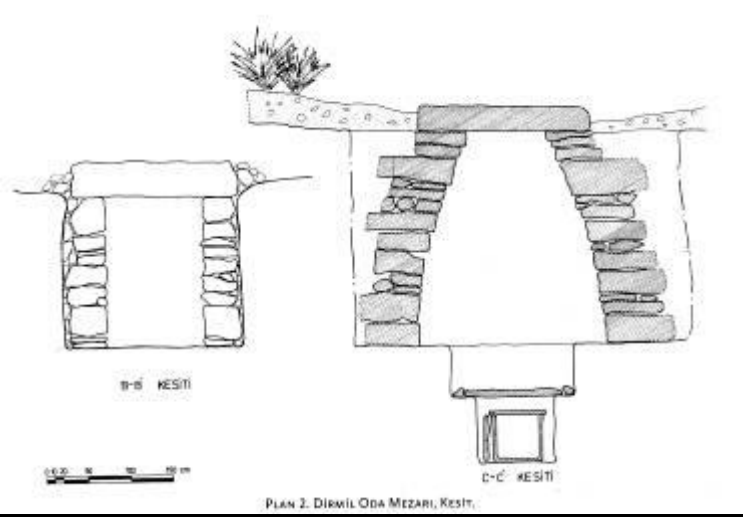


DİRMİL- GÖKÇEBEL ODA MEZARI

2,15 GEN. X 2,60 UZ.

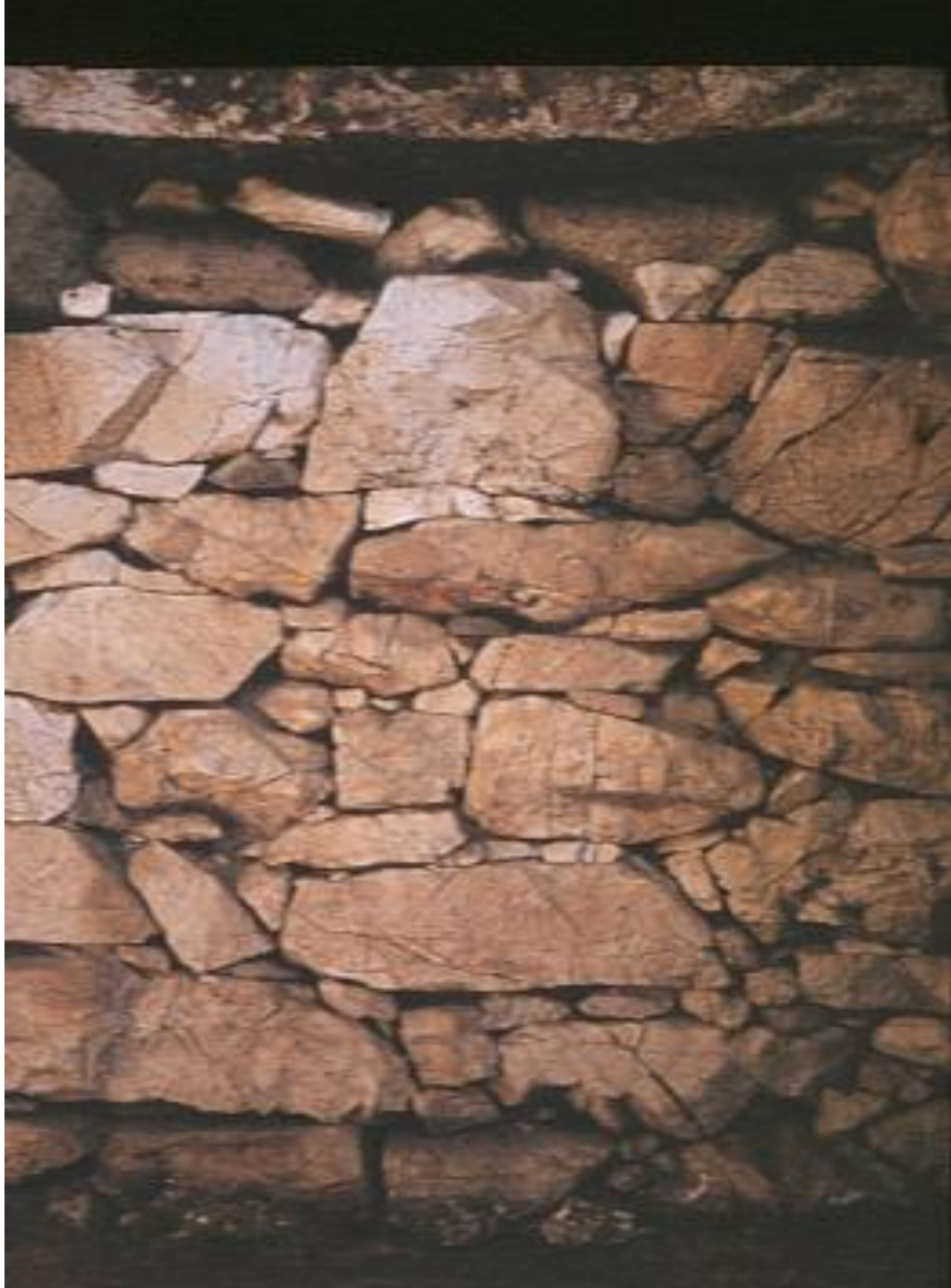
BURGAZ TEPENİN GÜNEYBATI YAMACINDA
YER ALMAKTADIR

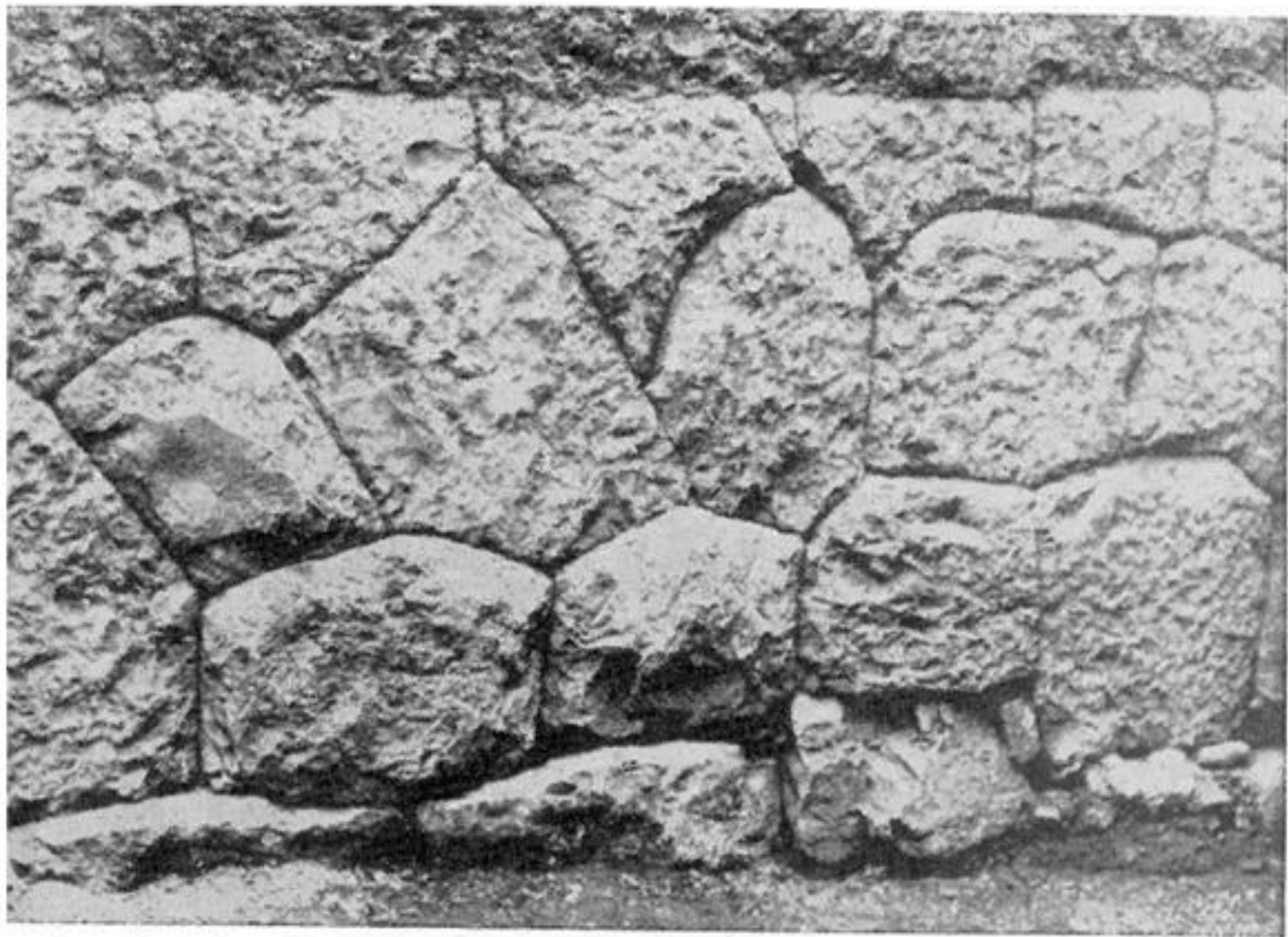
SAHTE KUBBE = BİNDİRME TEKNİĞİ









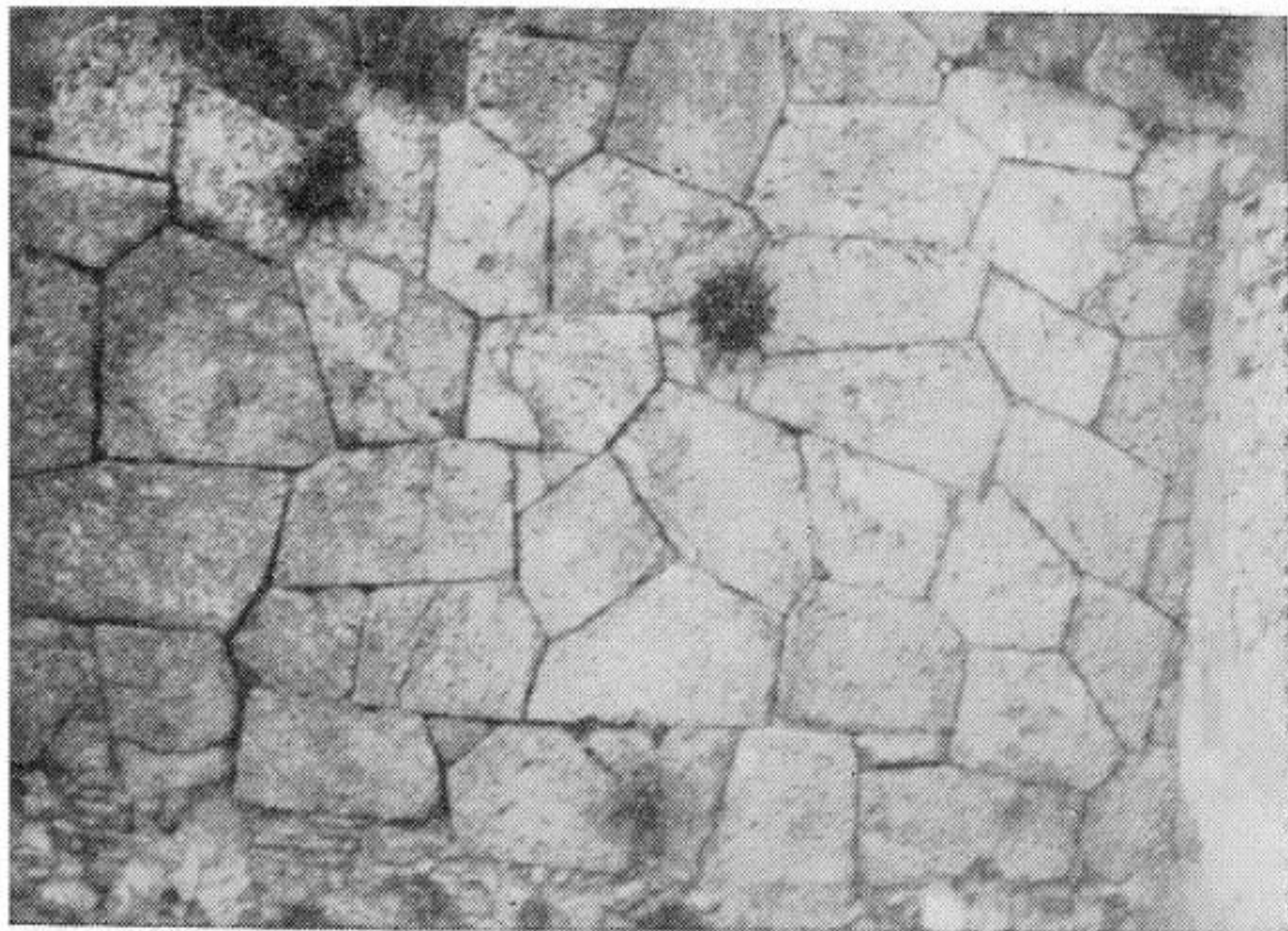


Resim 27. Lesbos duvar örgüsü, Eleusis, (Orlandos 1968, 128, Fig. 14)







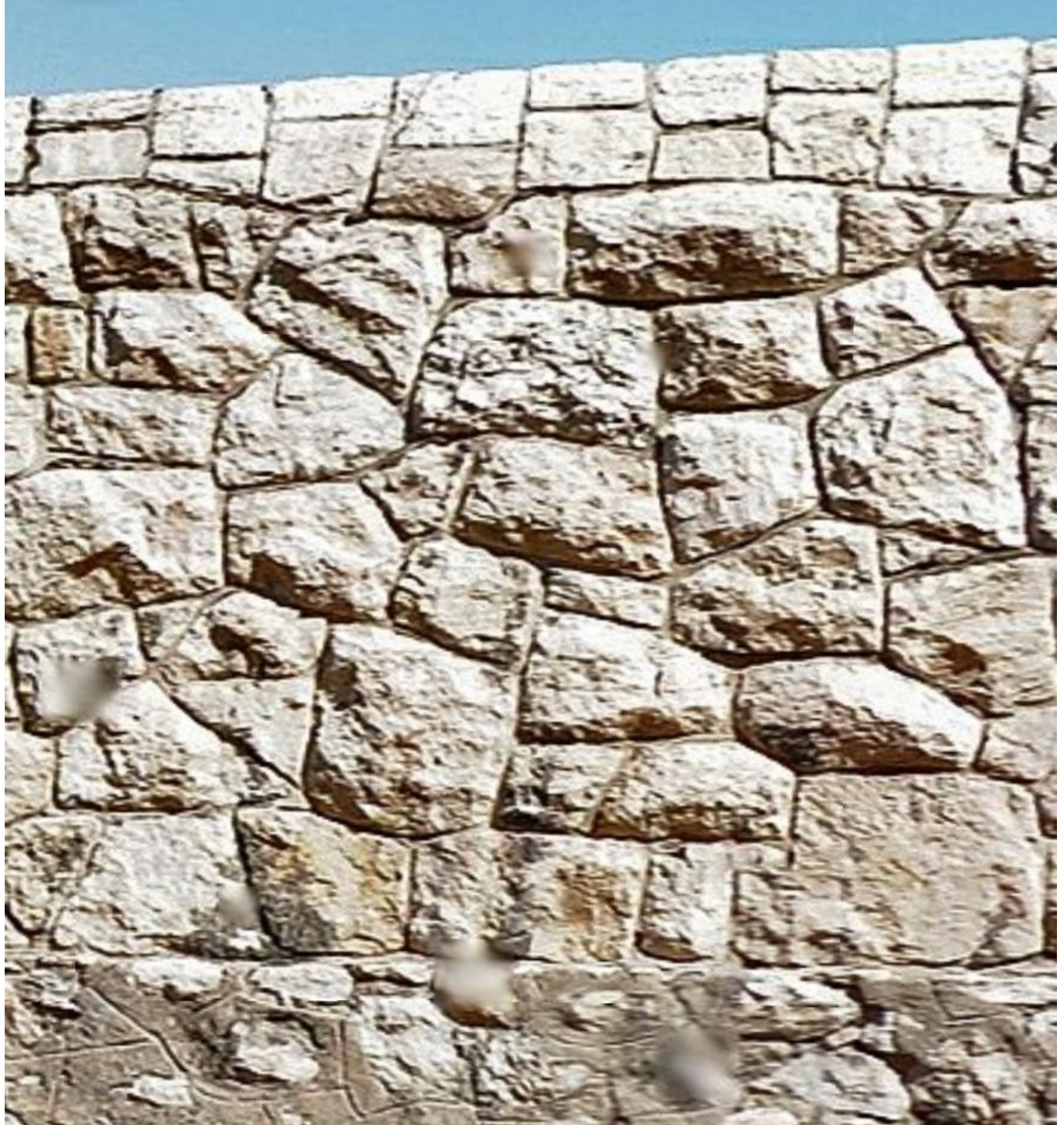


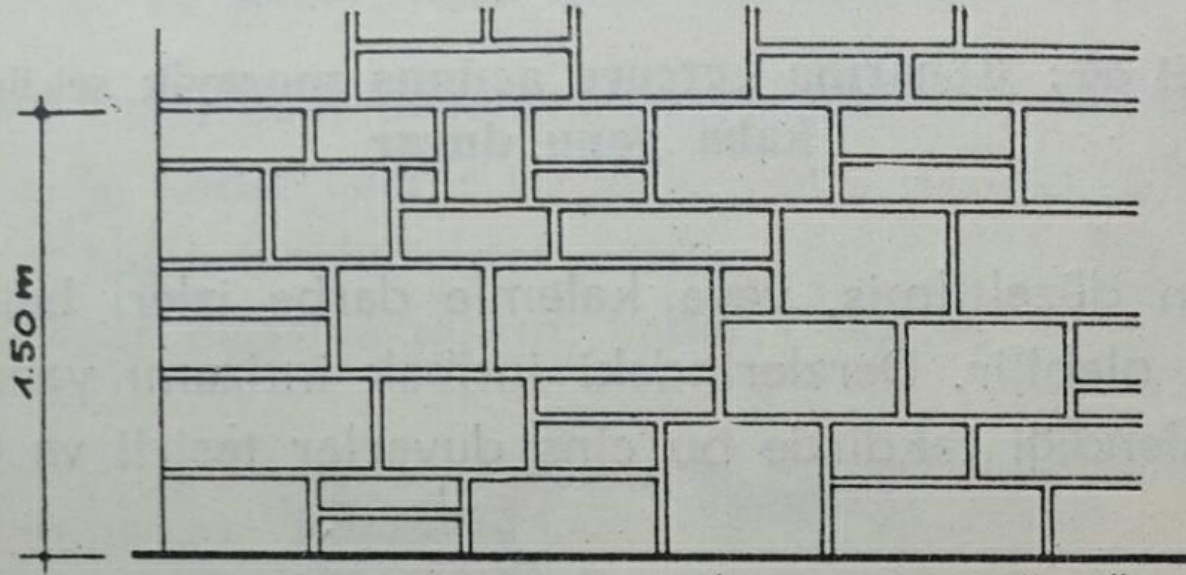
28. Poligonal duvar örgüsü. Delphi'de bir teras duvarı. (Orlandos 1968, 130. Fig.



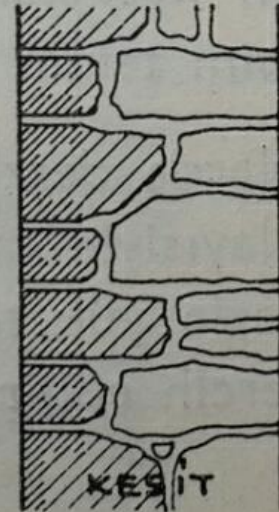
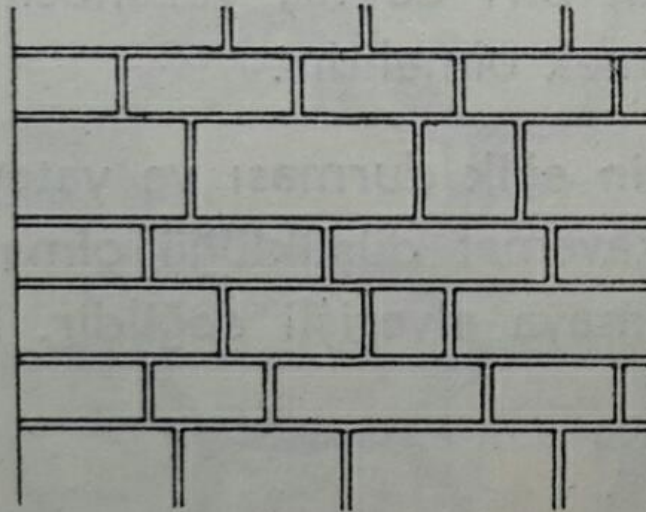




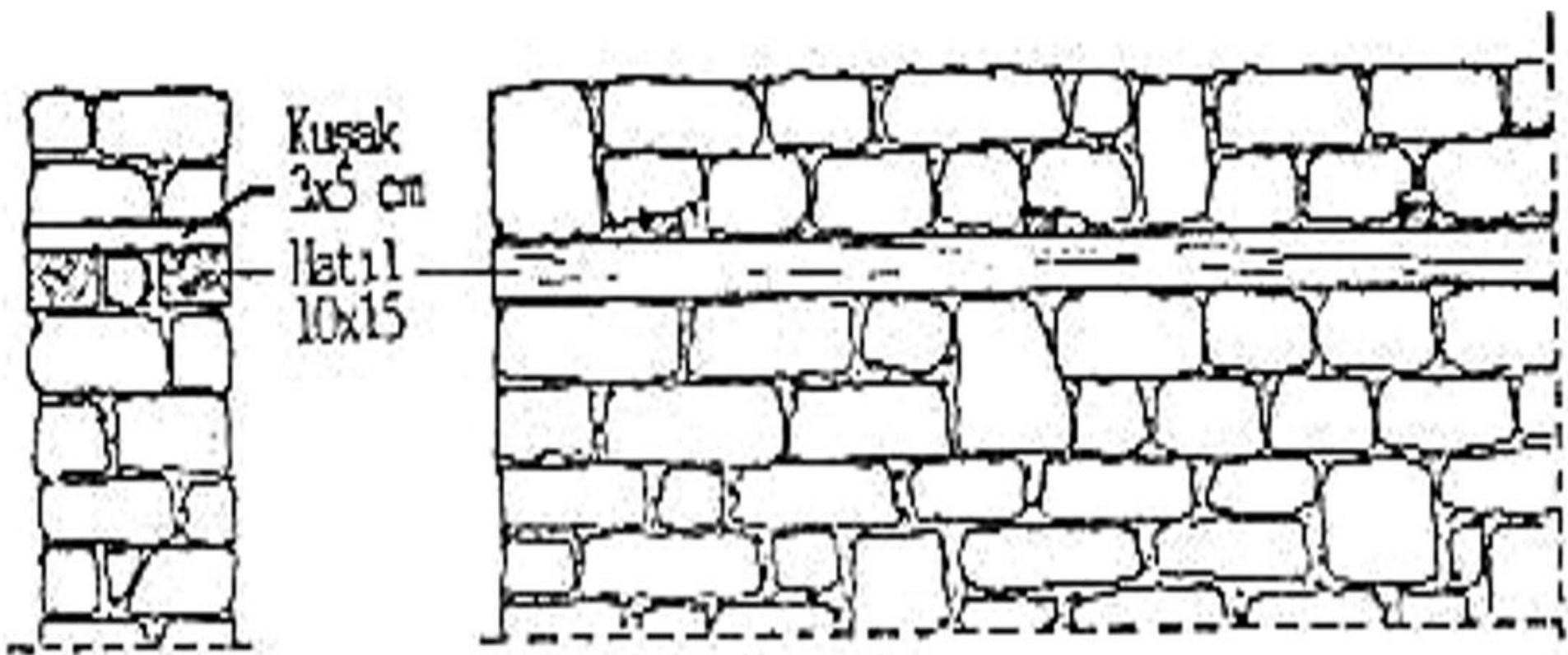




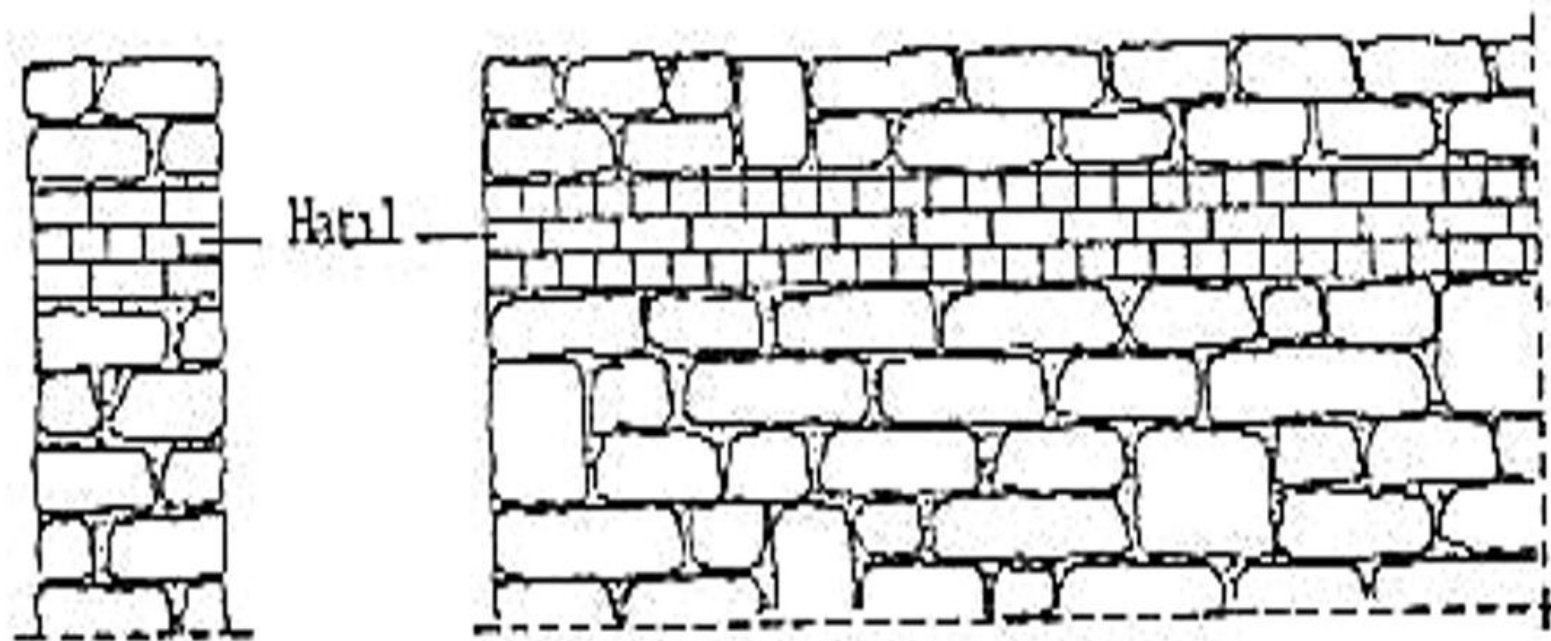
KESİK TABAKALI ÖRGÜ



DEVAMLI TABAKALI ÖRGÜ



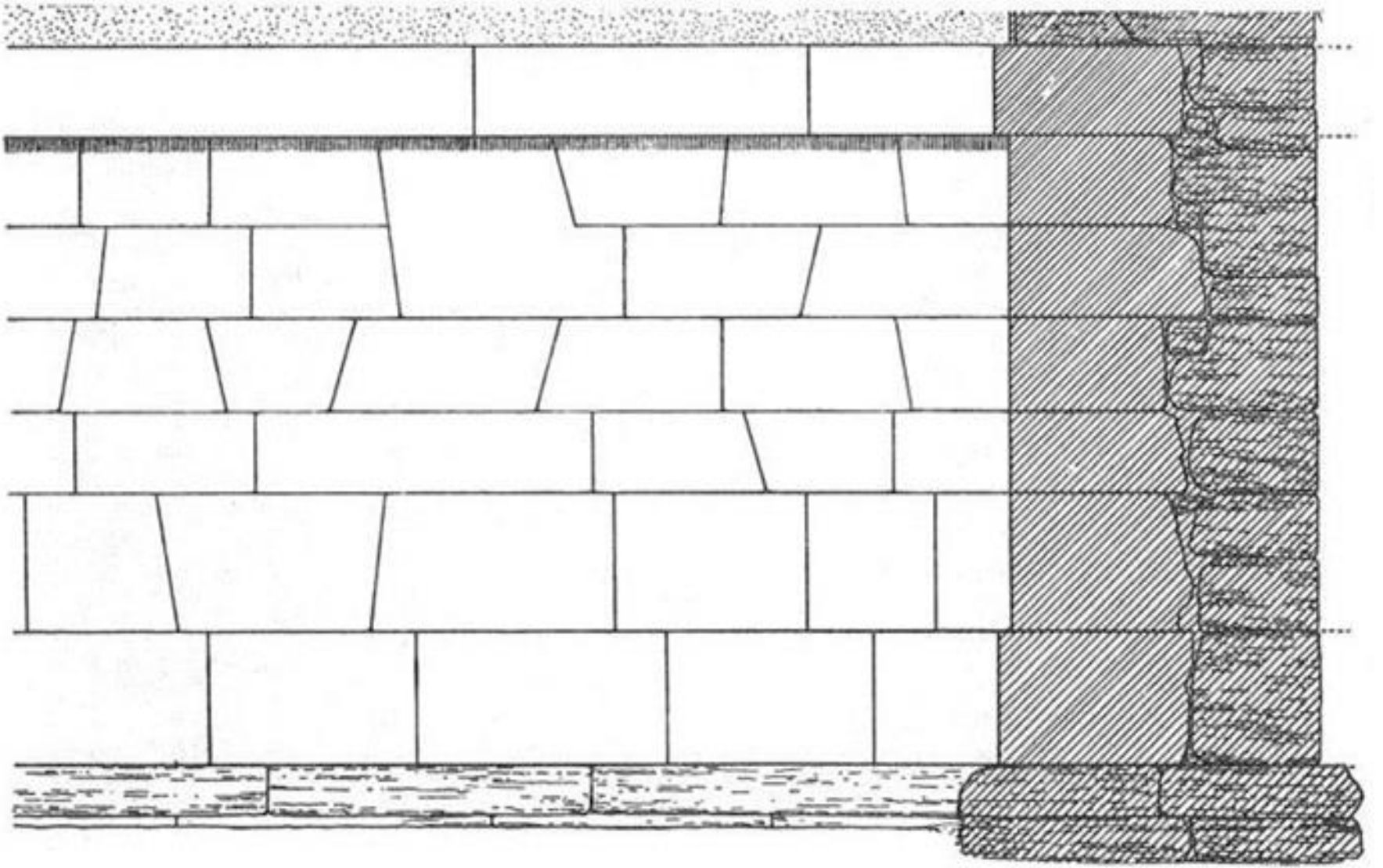
Ahşap Hatıl



Tuğla hatıl

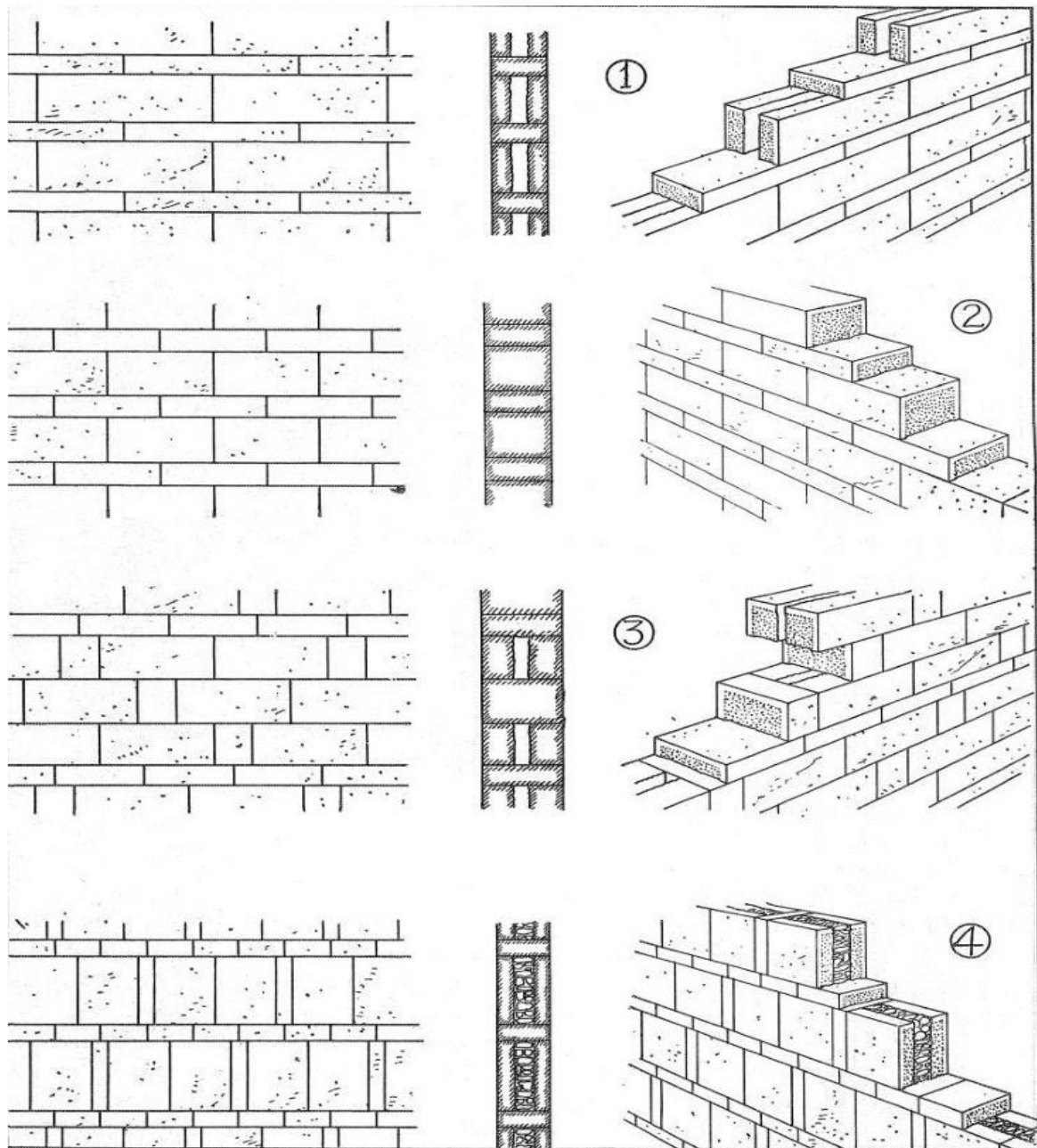
TUGLA HATIL



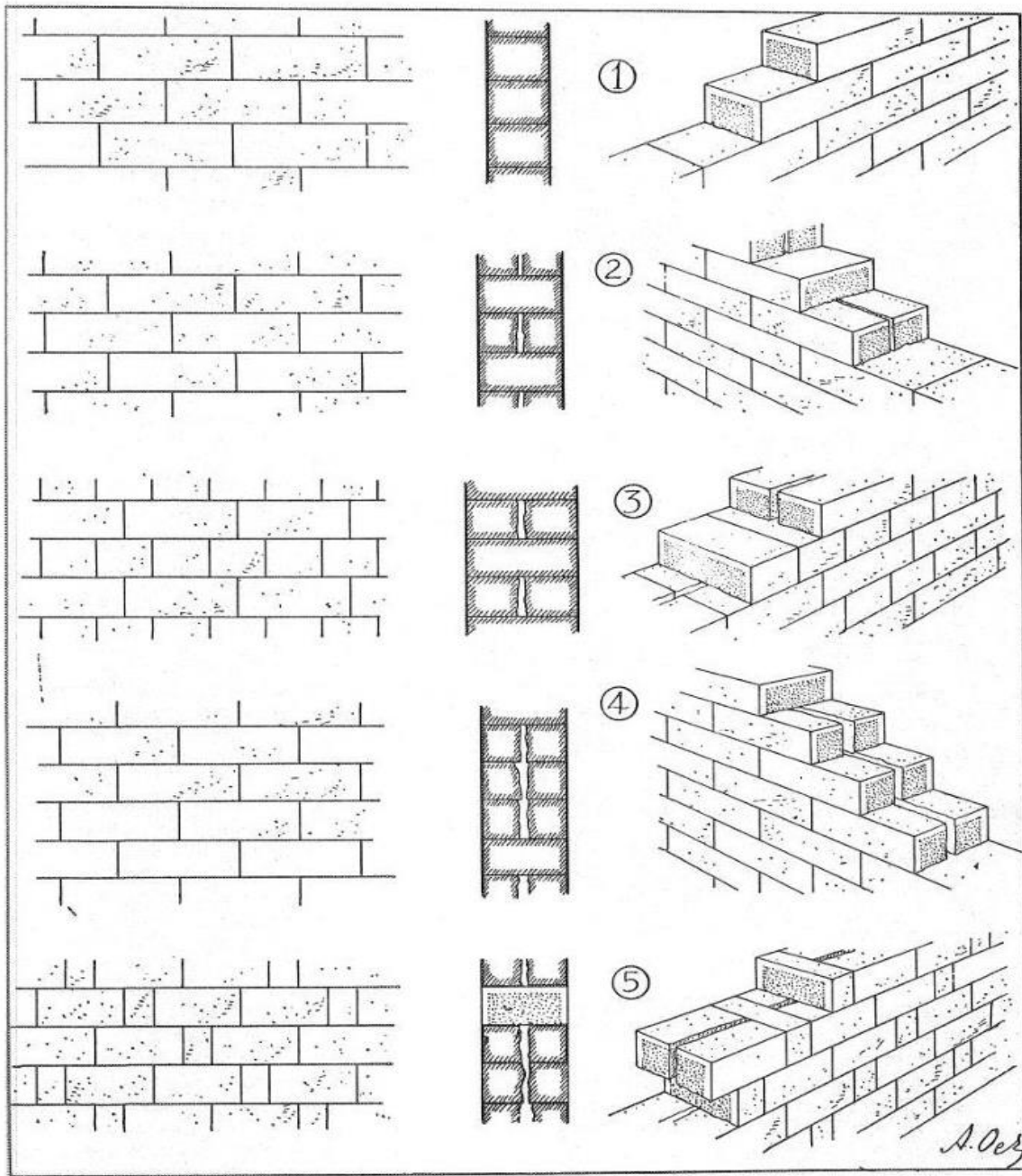


Resim 29. Trapezoidal duvar örgüsü, Delos, (Orlandos 1968, 138, Fig. 158).





Resim 31. Pseudo izodamik duvar örgüsü çeşitlerini gösteren çizim, (Orlandos 1968, 148, Fig. 165)



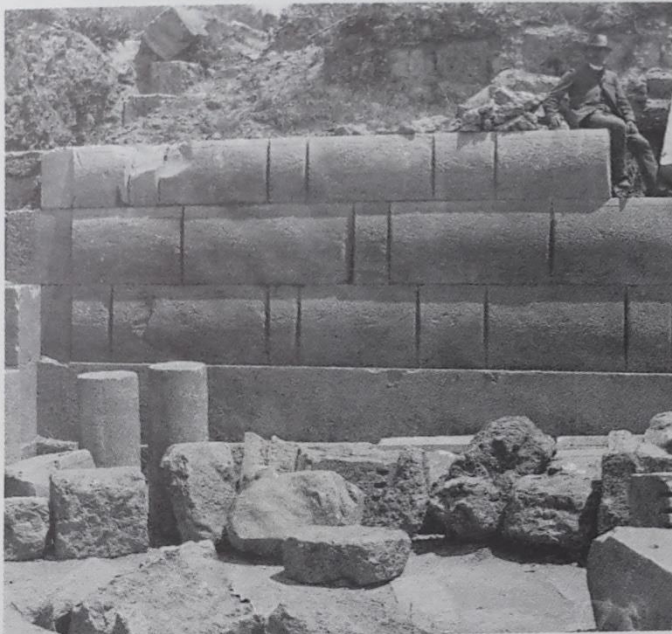
Resim 30. İzodamik duvar örgüsü çeşitlerini gösteren çizim, (Orlandos 1968, 143, Fig. 160)



a)



b)

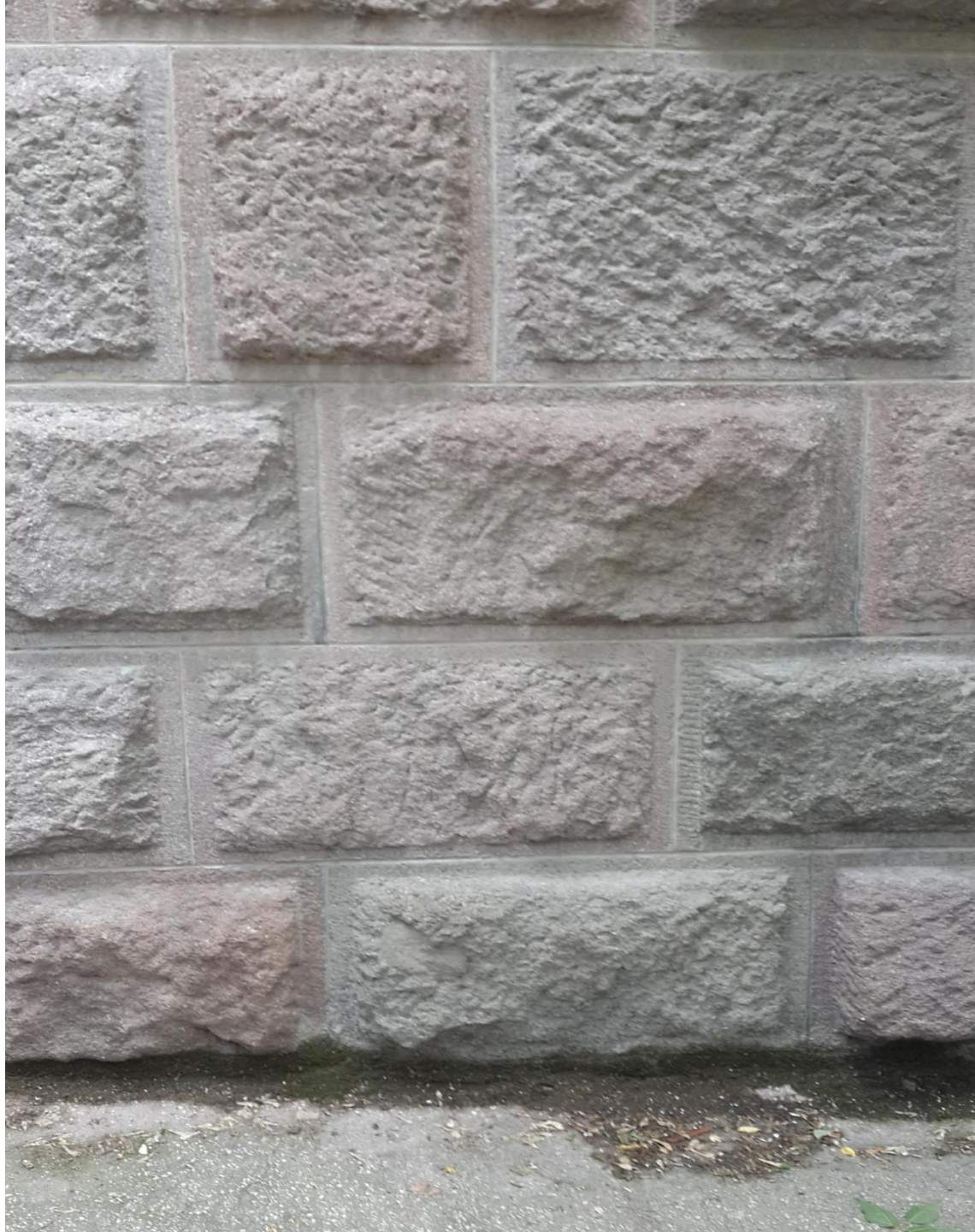


c)



d)

33 *Quader-Mauerwerk verschiedener Typen: a) Bossenquadern in Priene; b) pseudo-isodomes Quaderwerk in Pergamon; c) Polsterquadern in Magnesia am Mäander; d) Isodomes Quadermauerwerk vor älterer Polygonalmauer in Assos*







81 Priene,
Athenaheiligtum –
Propylon: Unfertig
belassene Stufen und
in Bosse stehengebliebene
Seitenwand



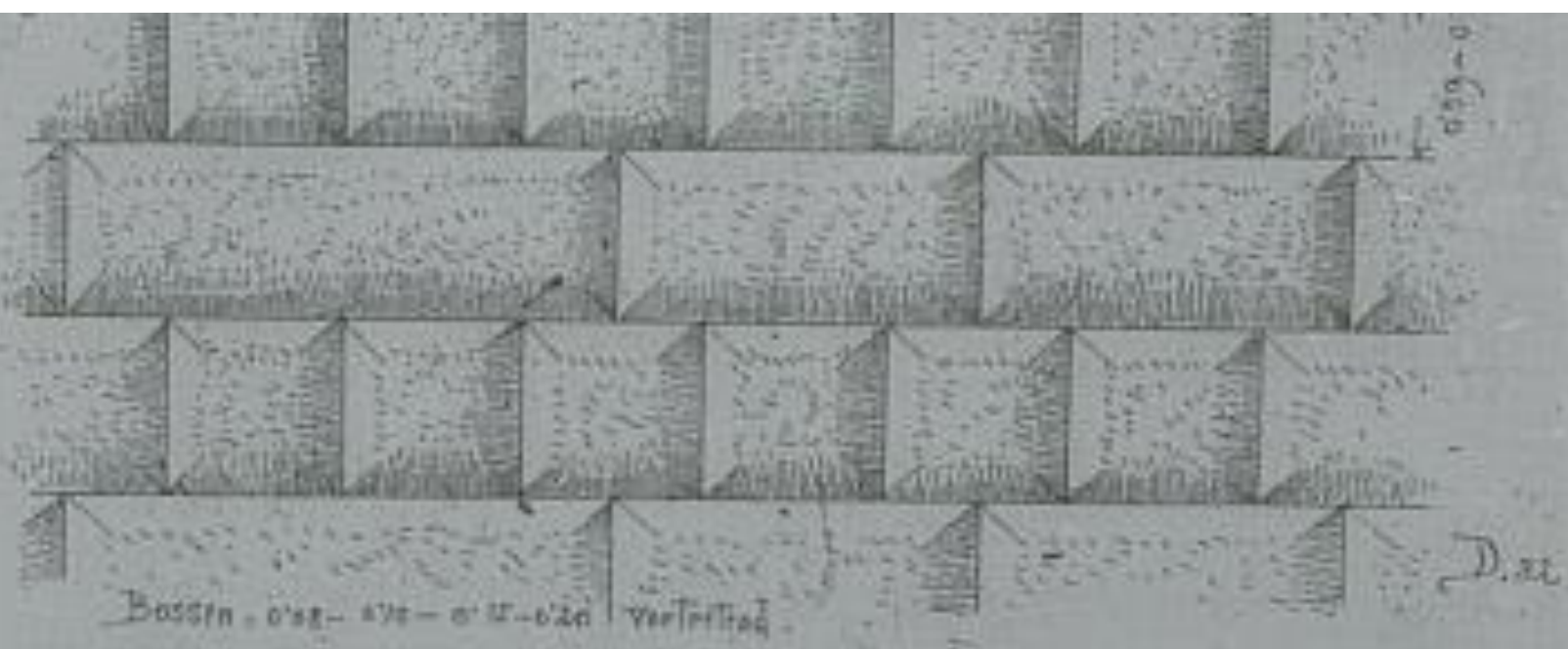


Fig. 202.

Quaderschichtungen

