

KLA 120
ANTİK MİMARİDE MALZEME - TEKNİK

7. Hafta

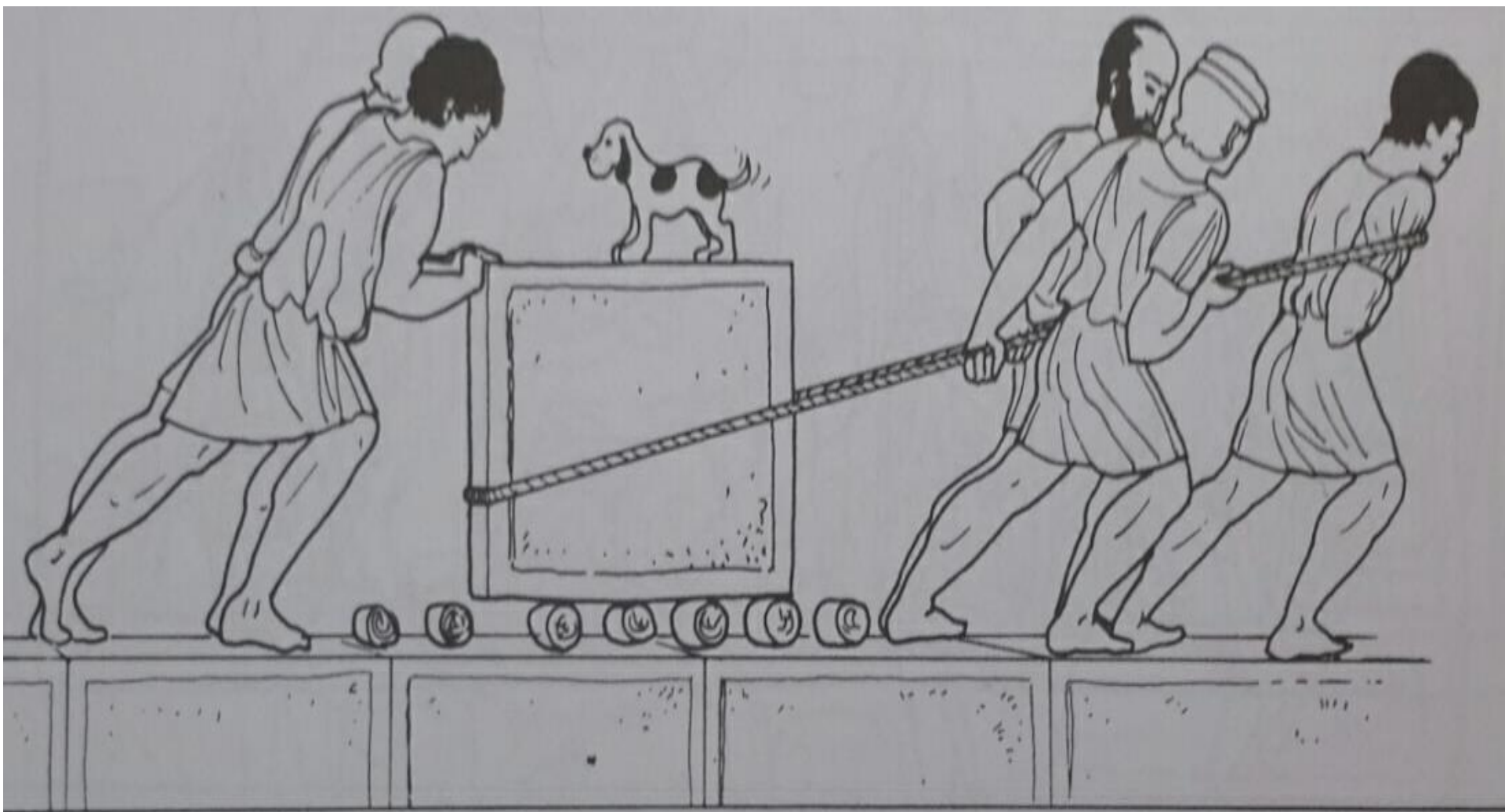
KLA 120

ANTİK MİMARİDE MALZEME - TEKNİK

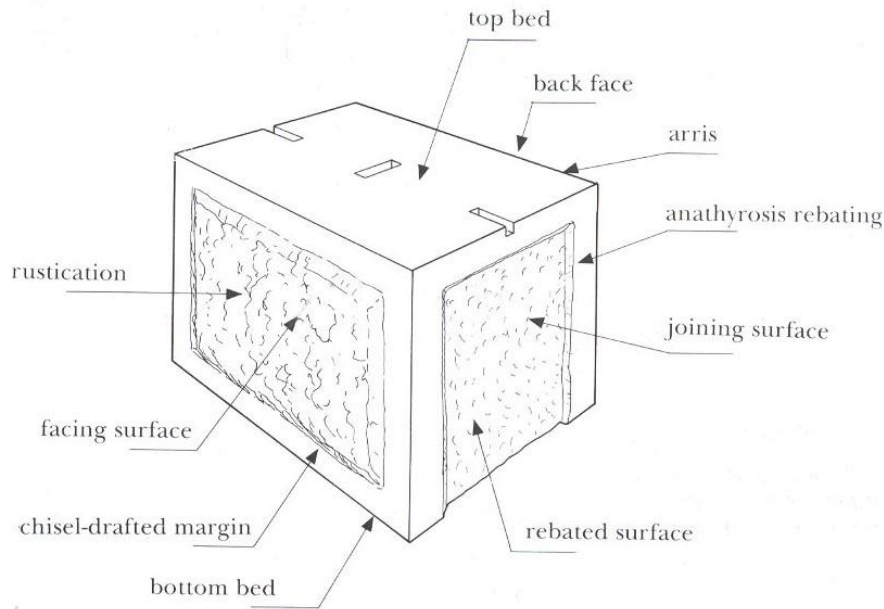
**MİMARİ ELEMANLARIN
YERLEŐTİRİLMESİ**

KENET – SAPLAMA (ZIVANA)



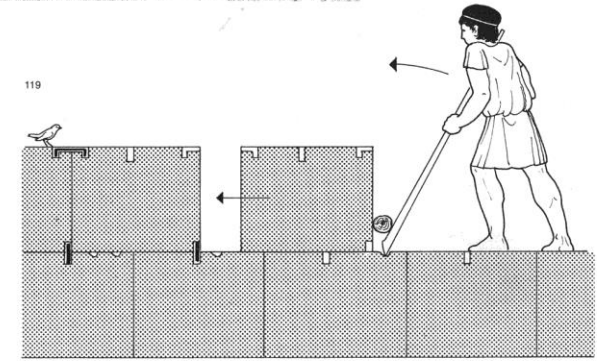


Mermer blokların demir kenetlerle birleştirme işlemi



117 A number to indicate the positioning of a capital for the portico of the Temple of Venus, Pompeii.

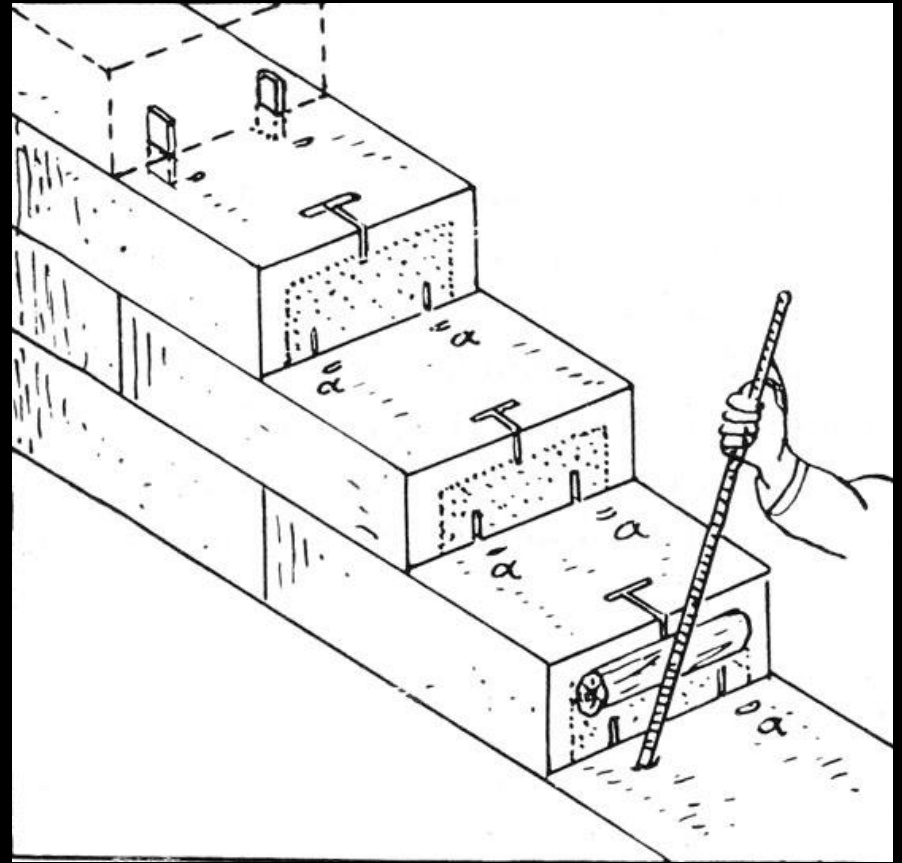
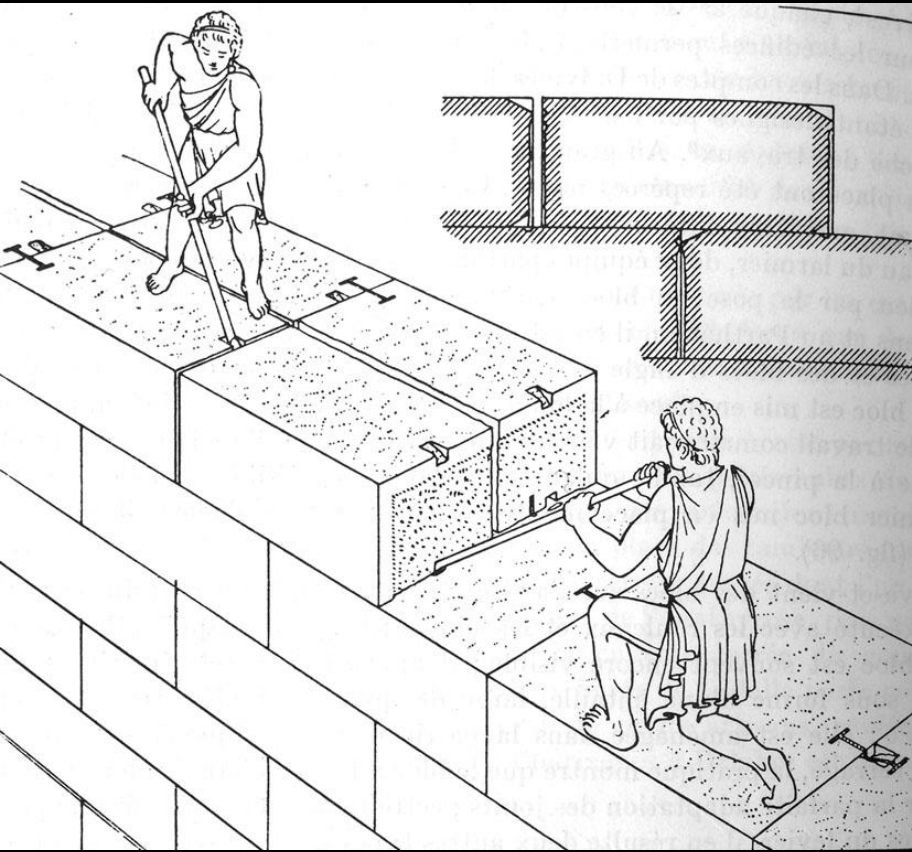
118 Painting from the House of Sircus showing a scene on a building site. Pompeii, VIII,5,26-57.



119 Wedging together blocks with a crowbar and clamping.

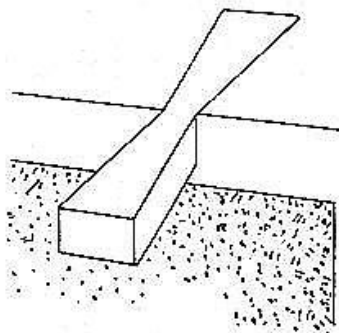
120 The top bed of a block from the foundations of the Roman Temple of Euromos (Caria). Note here, from left to right, the sealing clamp, three sockets for vertical dowels (with channels for the overflow) and two spike holes, thus enabling the block to be clamped to the joint of the upper block.



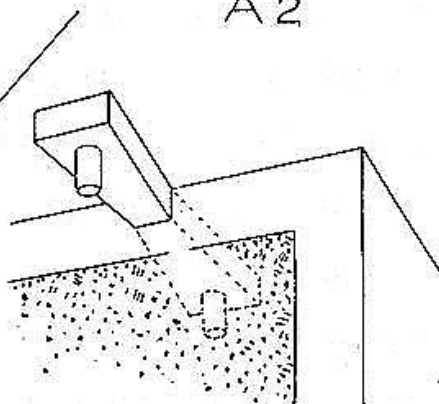




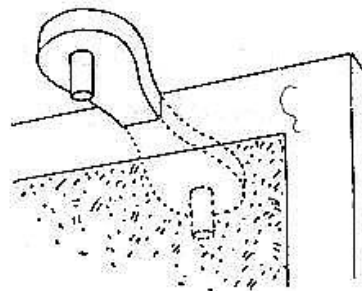
A1



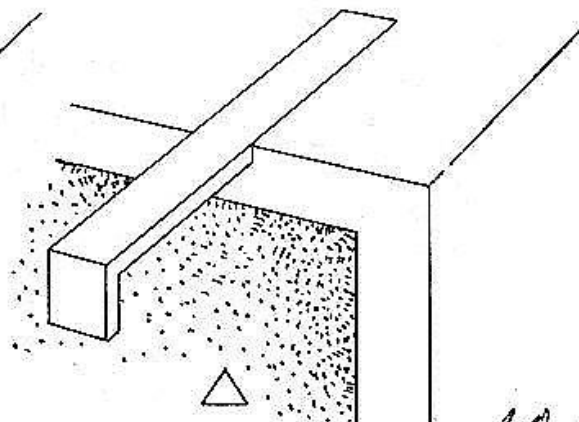
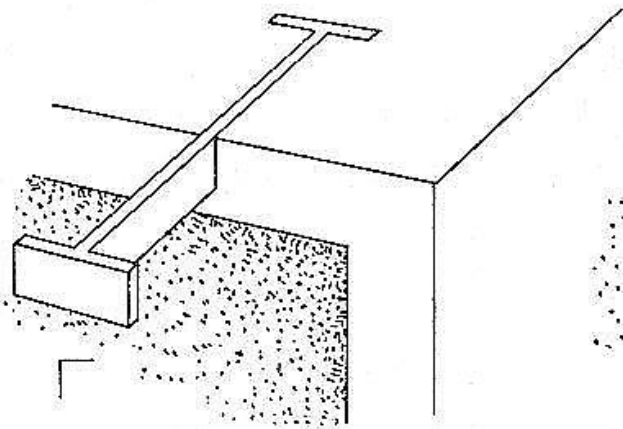
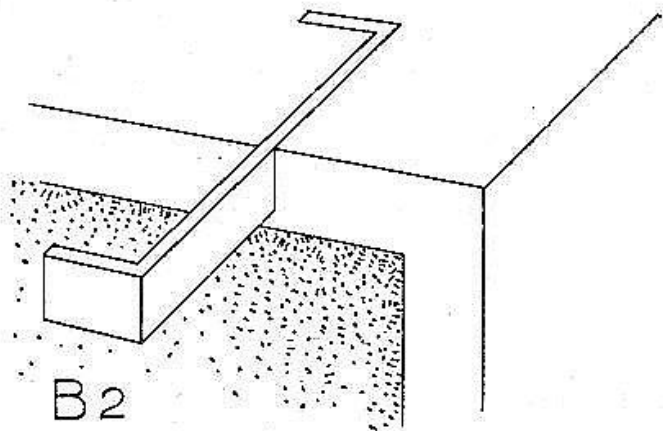
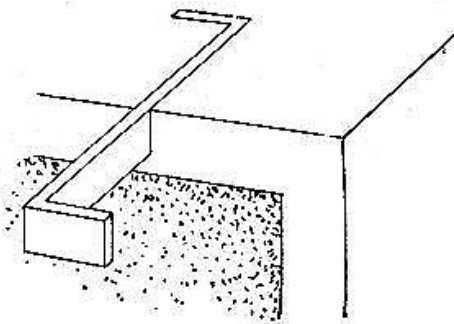
A2



A3



B1



Alc





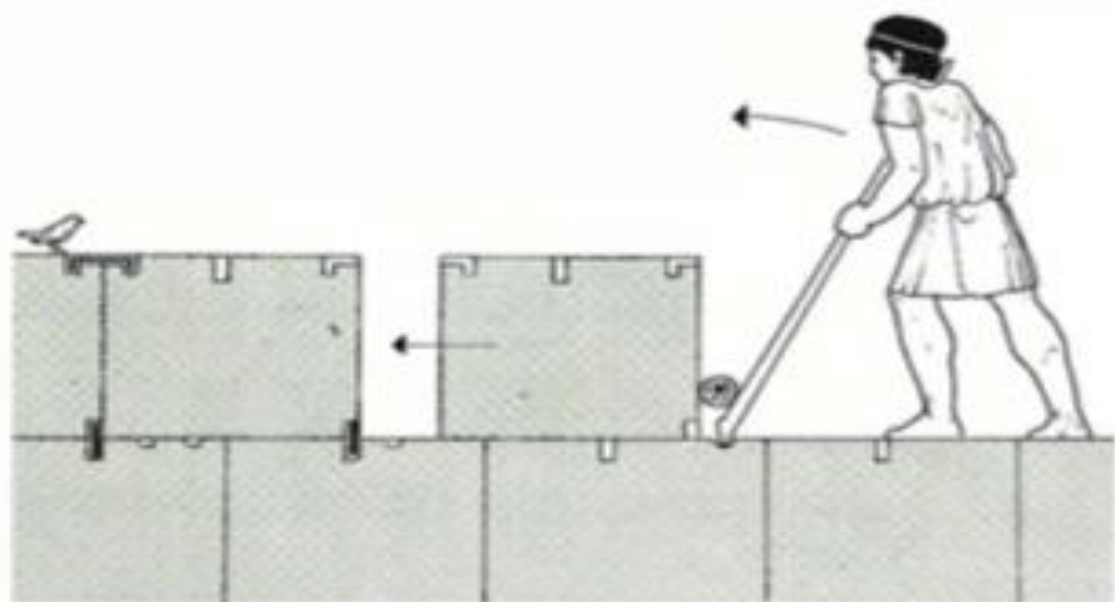
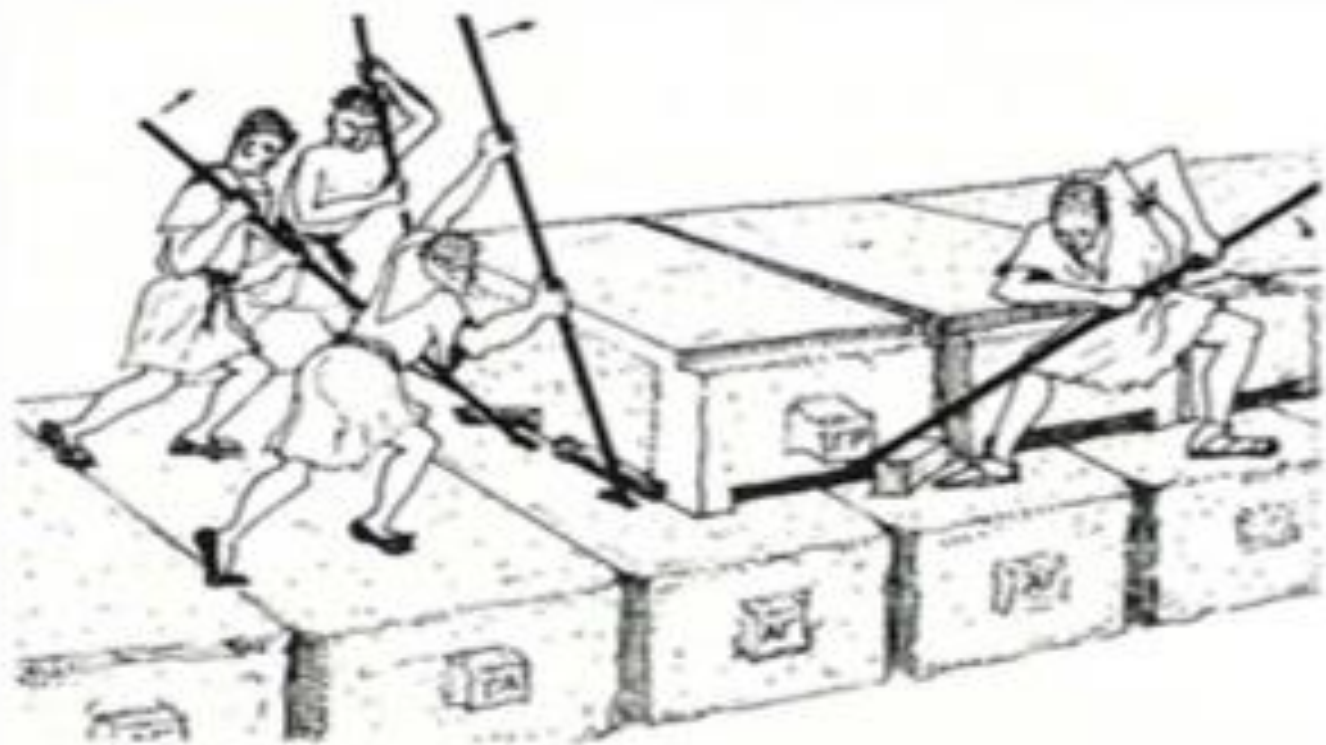


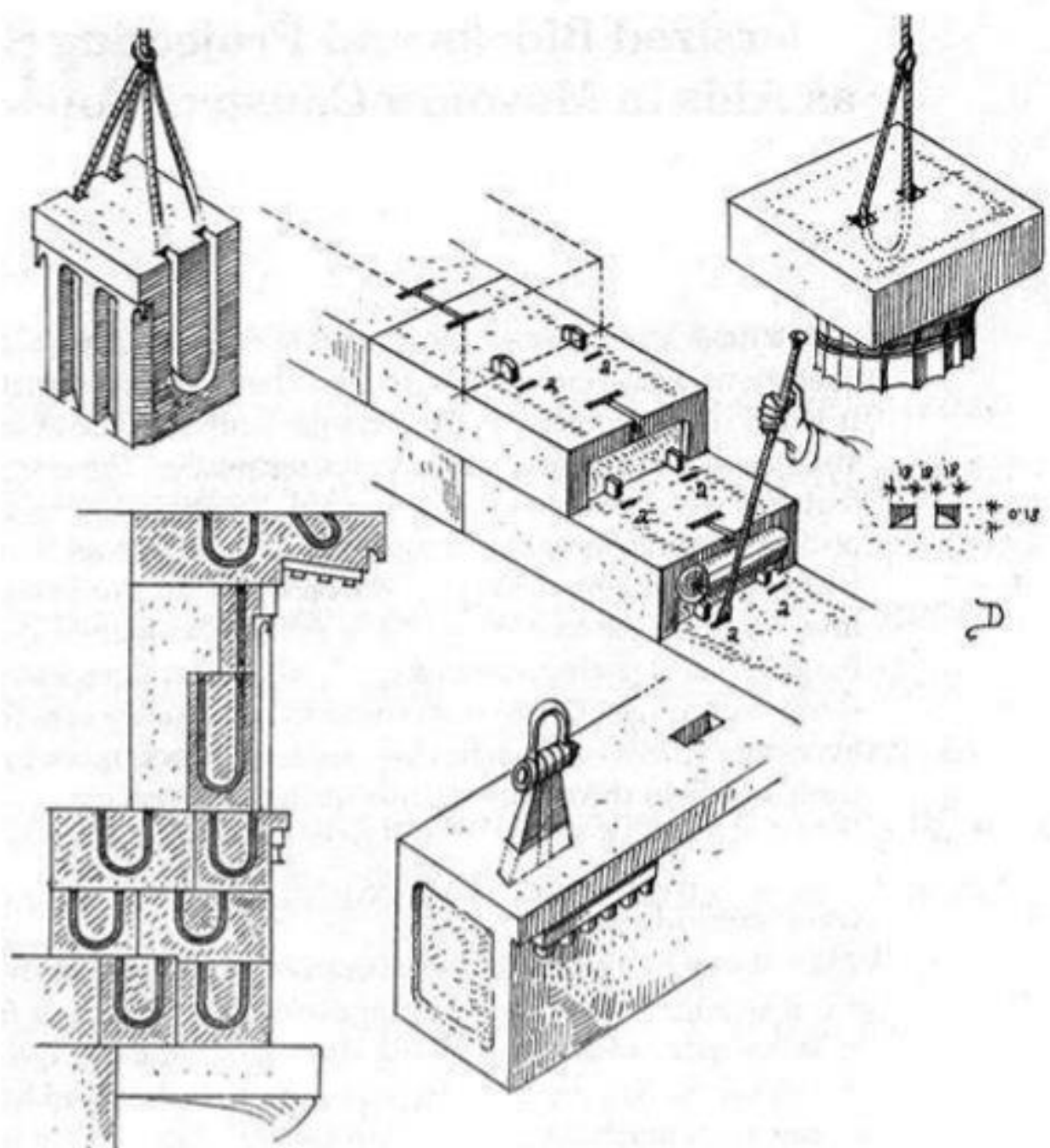
ANATHYROSIS

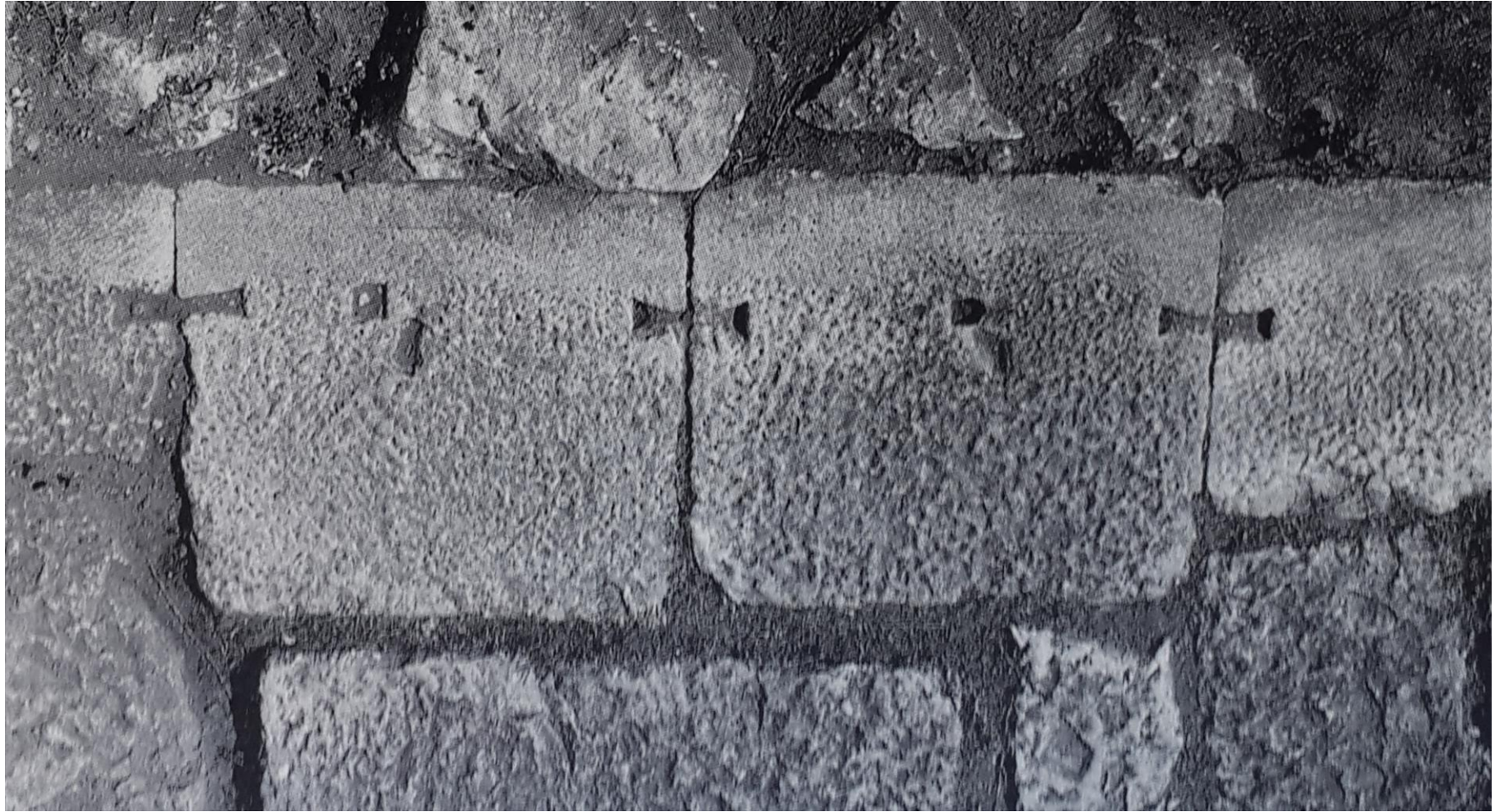
**Atina
Hephaisteion**

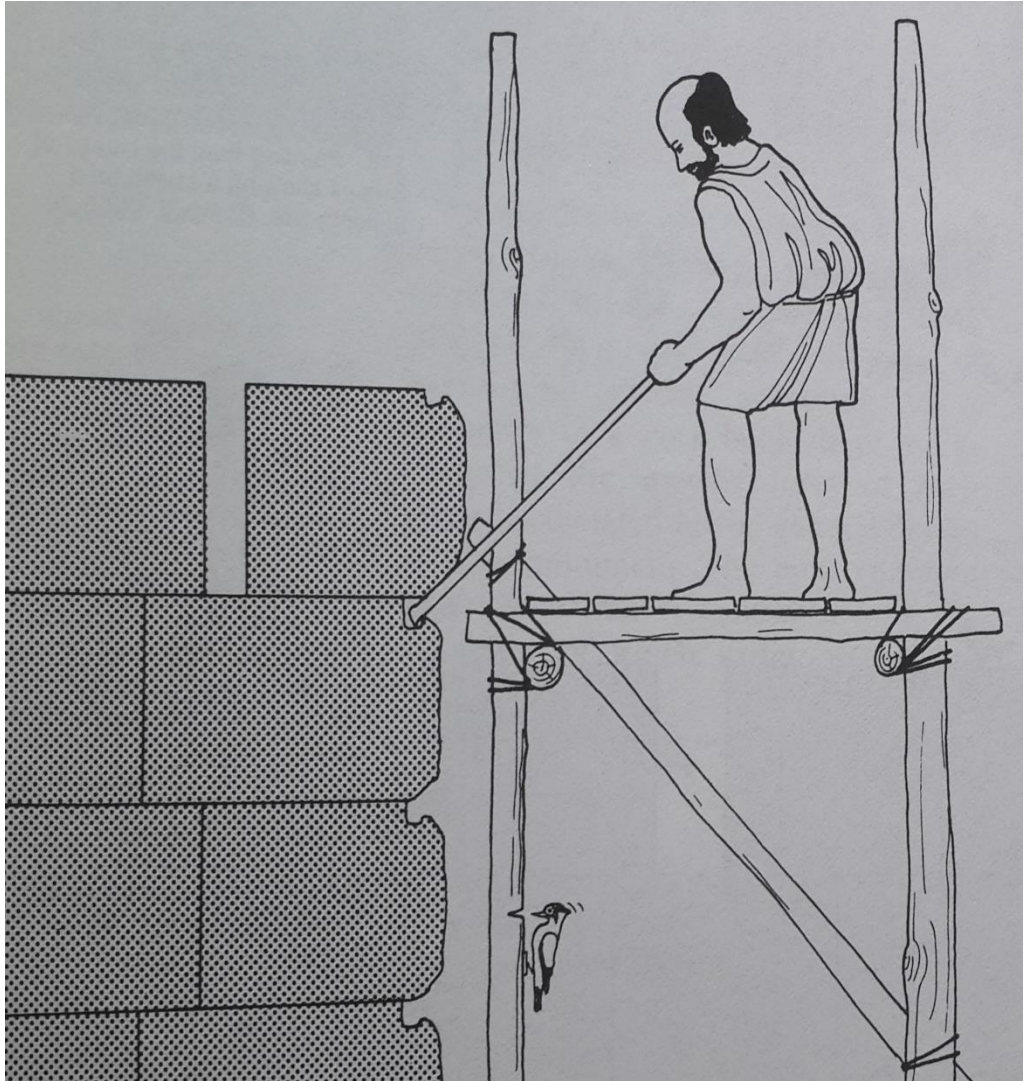


**Halikarnassos,
Mausolleum**

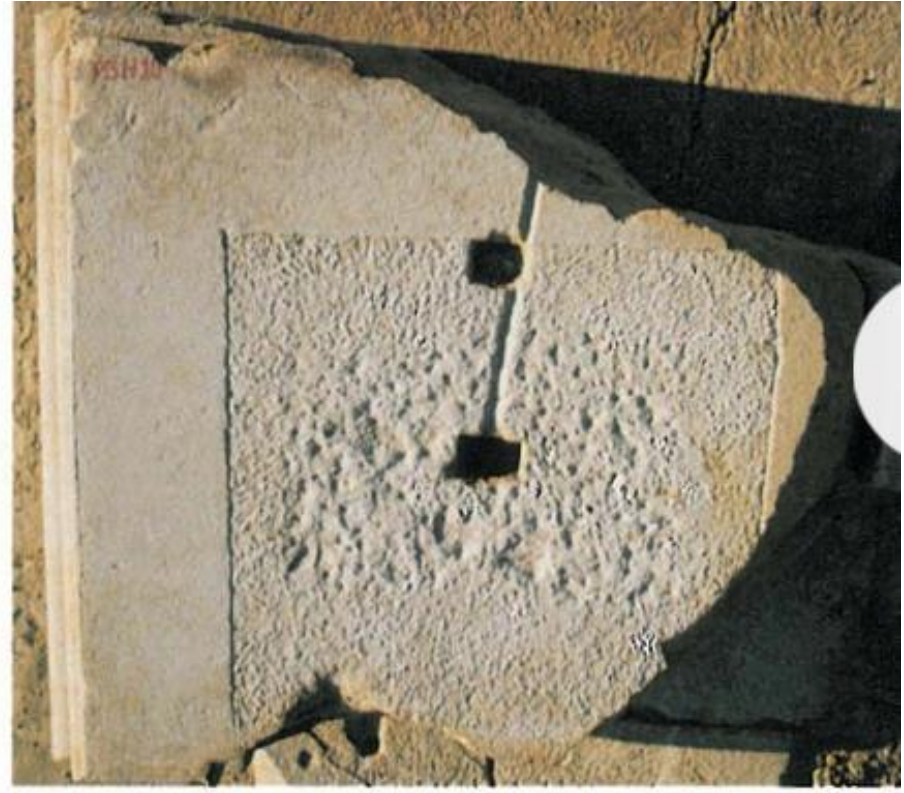
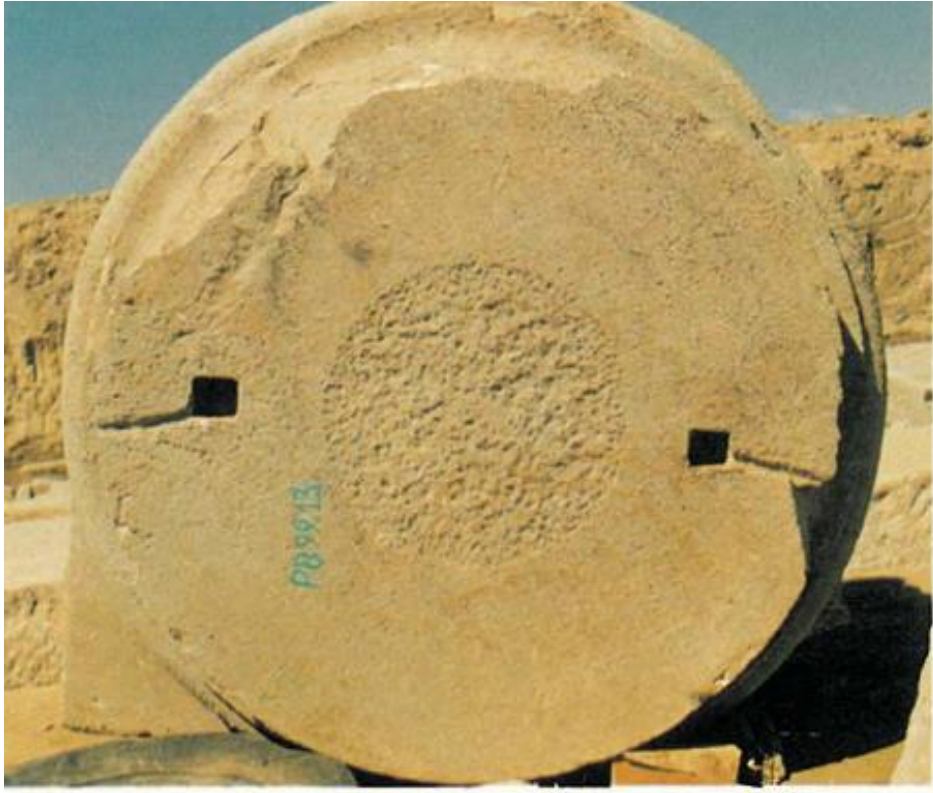


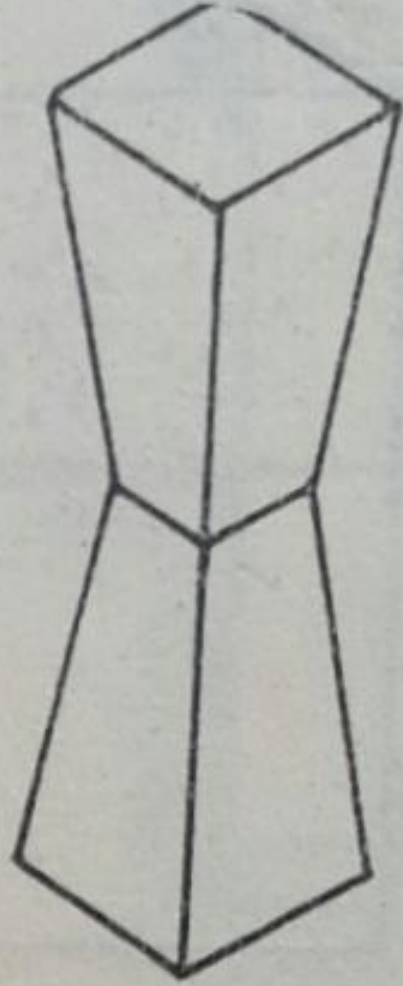
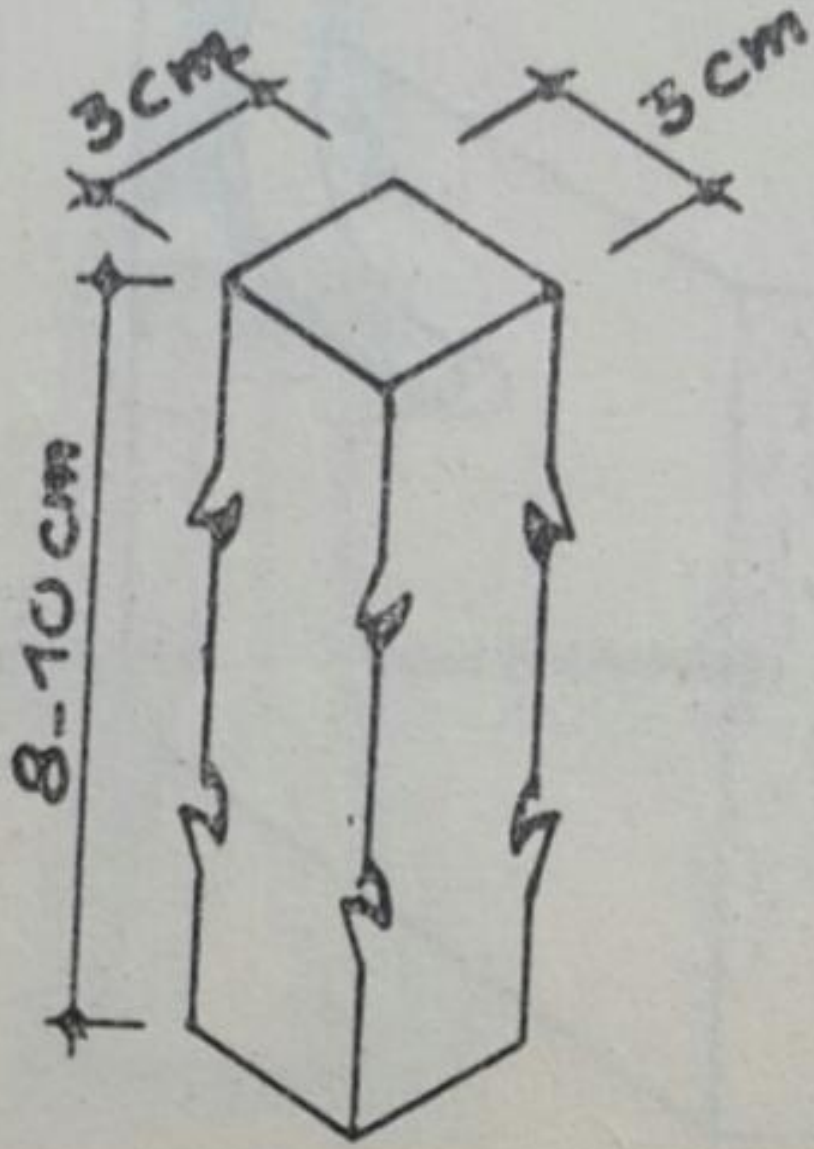


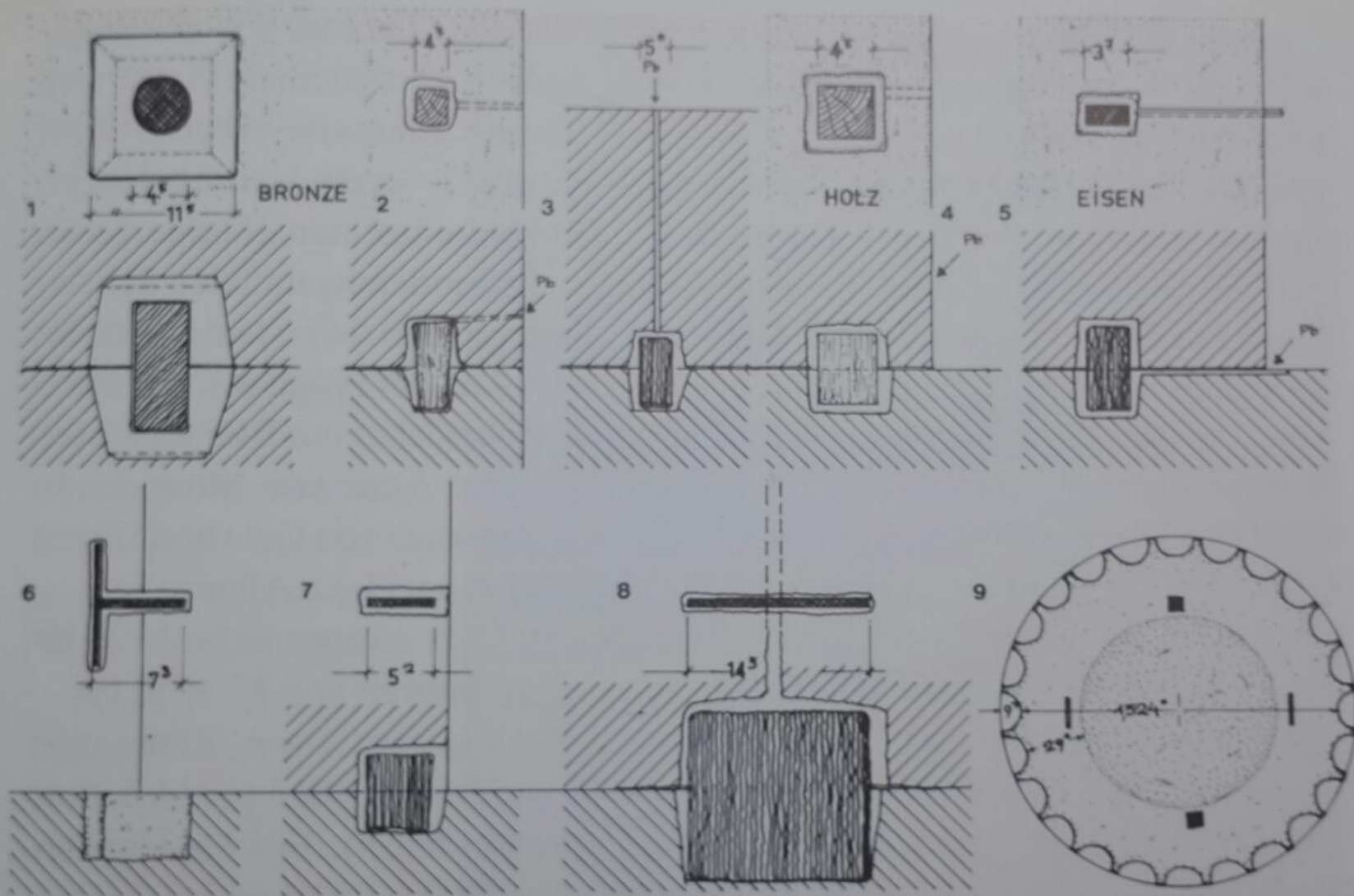












43 Antike Dübelformen (Mstb. 1 : 20): 1: Bronzedübel in hölzernem Gehäuse (Parthenon Athen); 2 und 4: Holzdübel mit seitlichem Gußkanal; 3: Eisendübel mit senkrechtem Gußkanal (vgl. Abb. 44); 5: Eisendübel mit horizontalem Gußkanal; 6: T-förmiger Kantendübel; 7–8: großer und kleiner Kantendübel aus Eisen; 9: Anordnung von Dübeln bei Säulen (vgl. Abb. 34)

