

B. SALDIRI SİLAHLARI

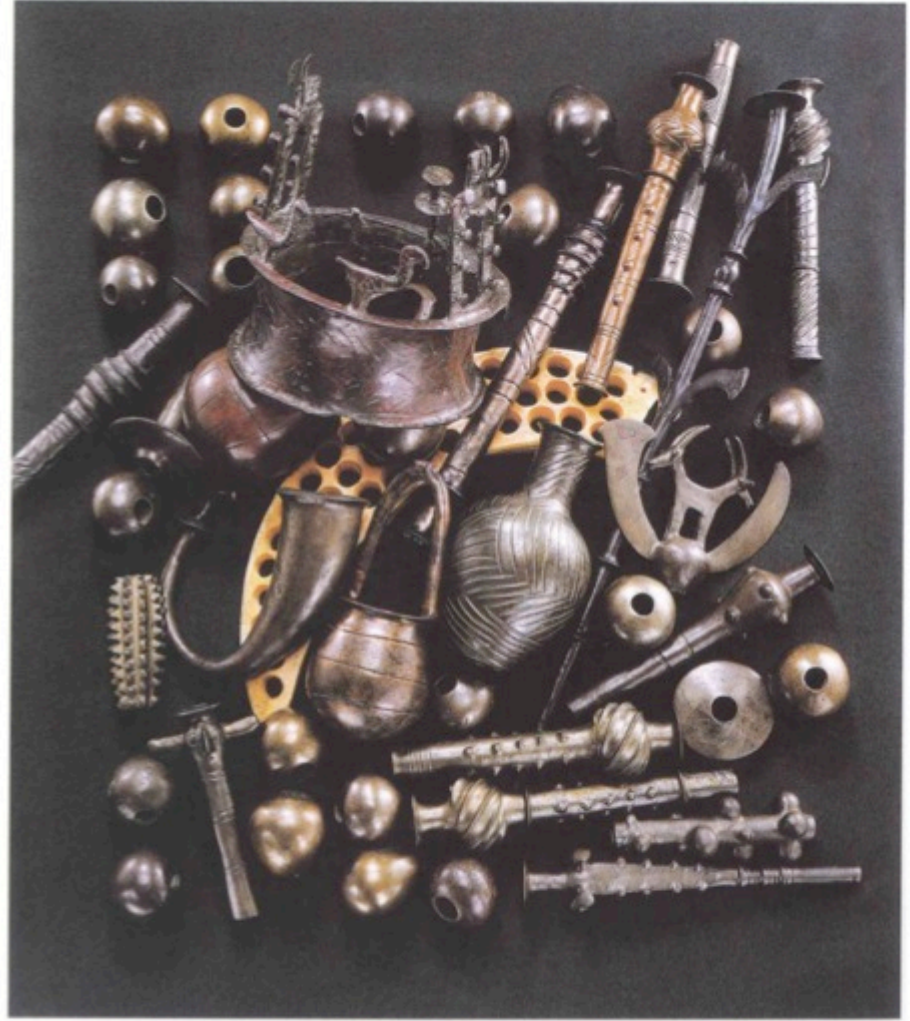
- 1. HANÇER / KILIÇ**
- 2. MIZRAK UCU**
- 3. BALTA**
- 4. OK UCU**
- 5. TRİDENT**
- 6. ASA / TOPUZ BAŞI**



TOPUZ BAŞI



Macehead / *Topuzbaşı*
Copper / *Bakır*, D / Ç 5.5, Can Hasan-
Karaman, 5500 BCE / MÖ 5500, Anadolu
Medeniyetleri Müzesi-Ankara



2. Nahal Mishmar. "Trésor". Chalcolithique (3700-3300 av. J.-C.).
Sceptres, masses, récipients, outils et objets divers en cuivre
(D'après Benoit 2003, fig. 61).

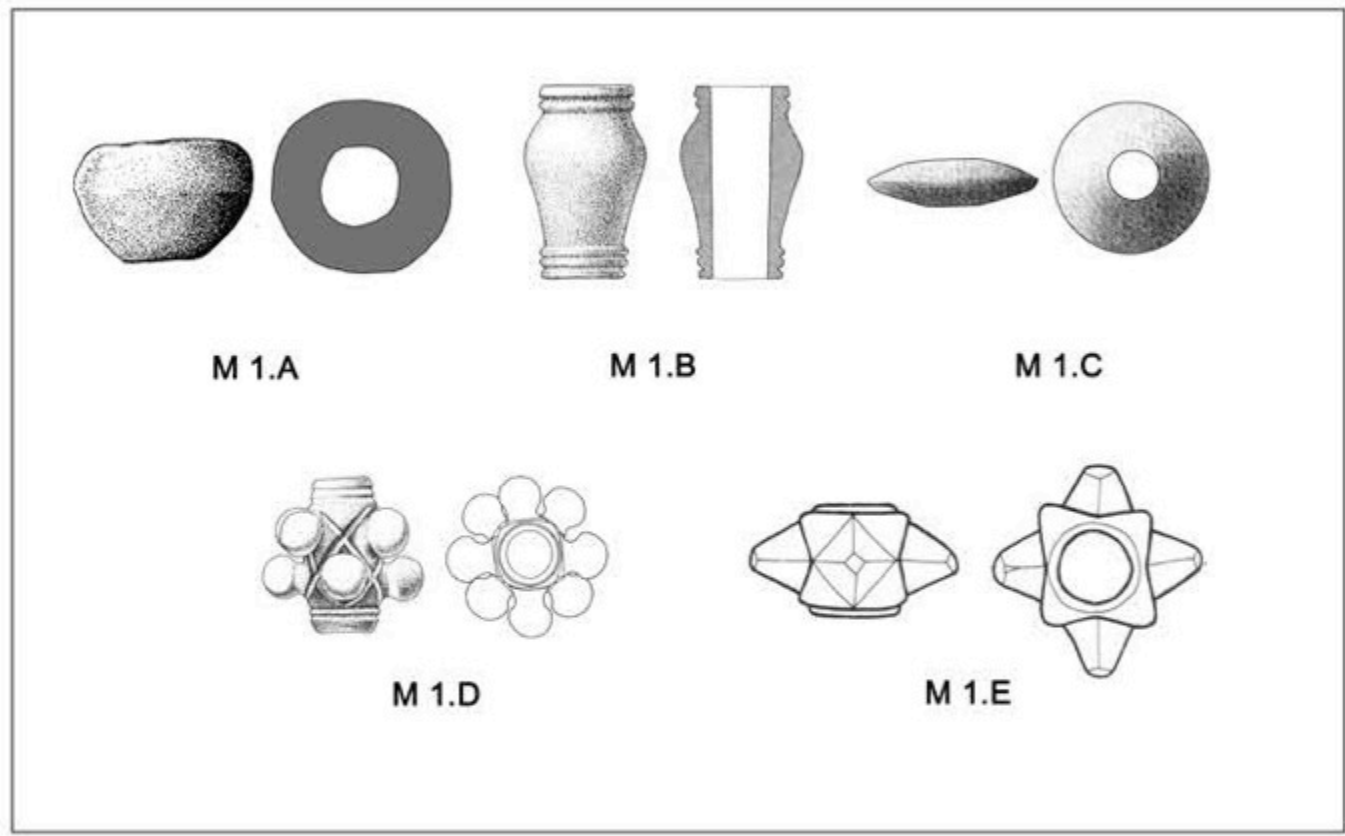
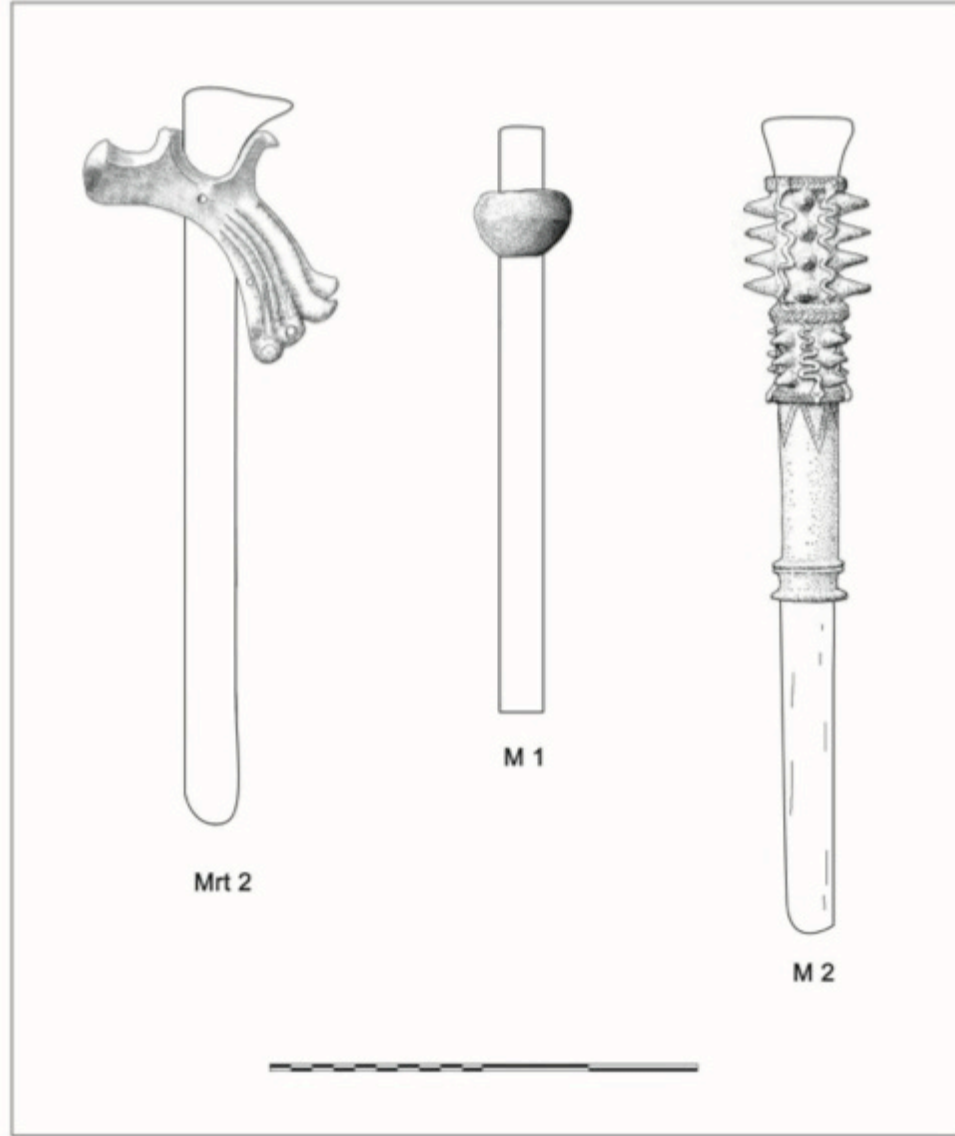
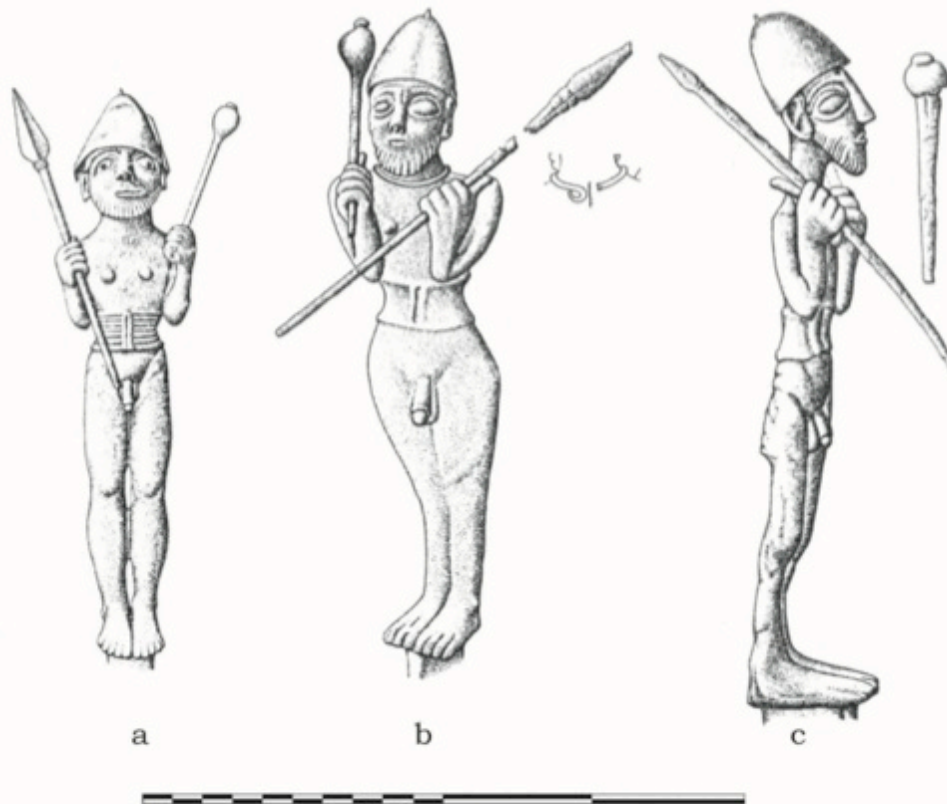


Fig. 2.77 – Type M 1 : sous-types.





231. Judaidah. Cachette (BA IV B). Figurines armées en bronze.
(D'après Seeden 1980, pls. 1.1-2 et 2.3).

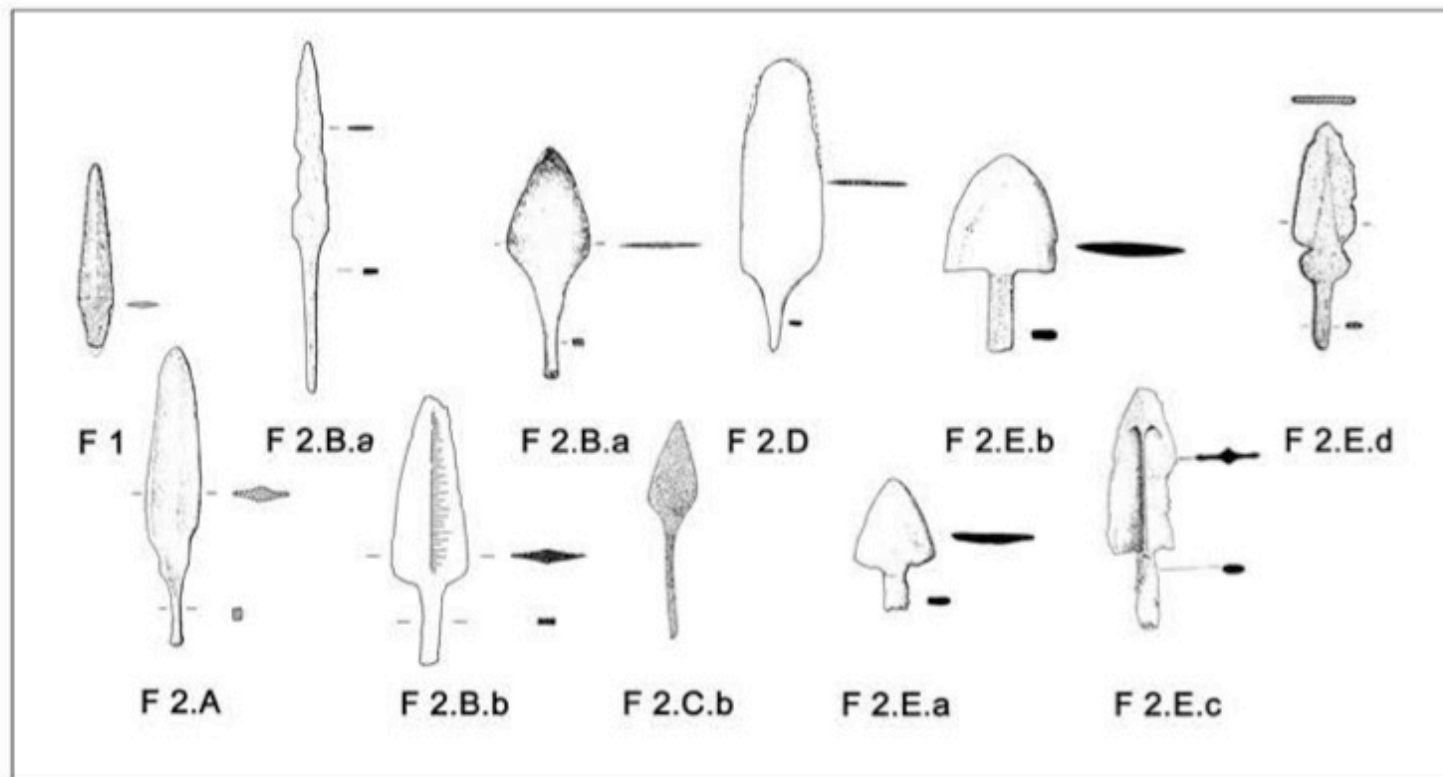


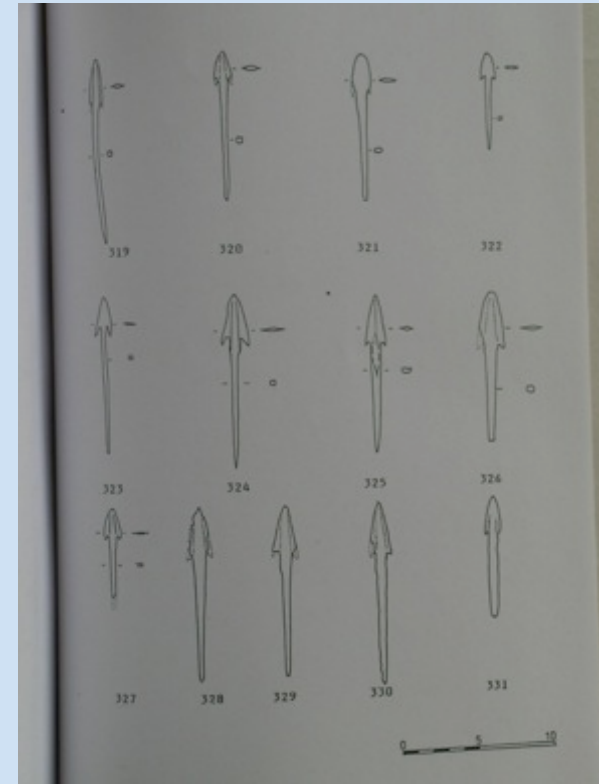
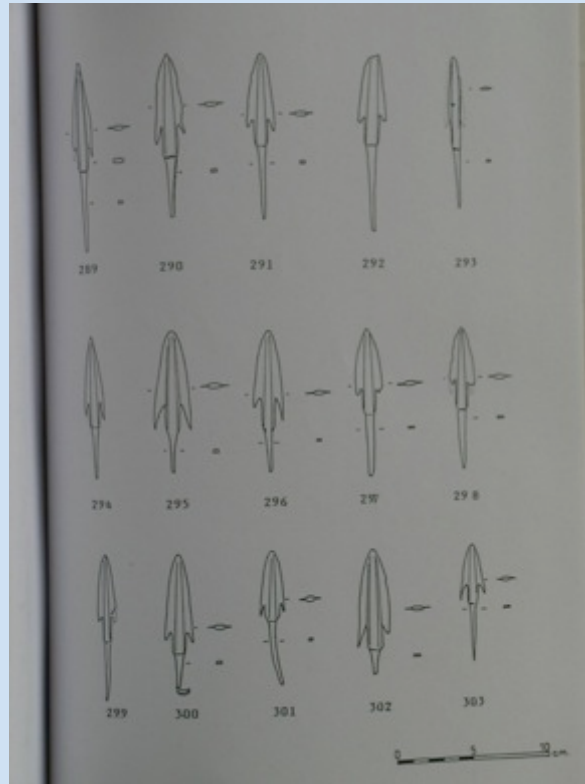
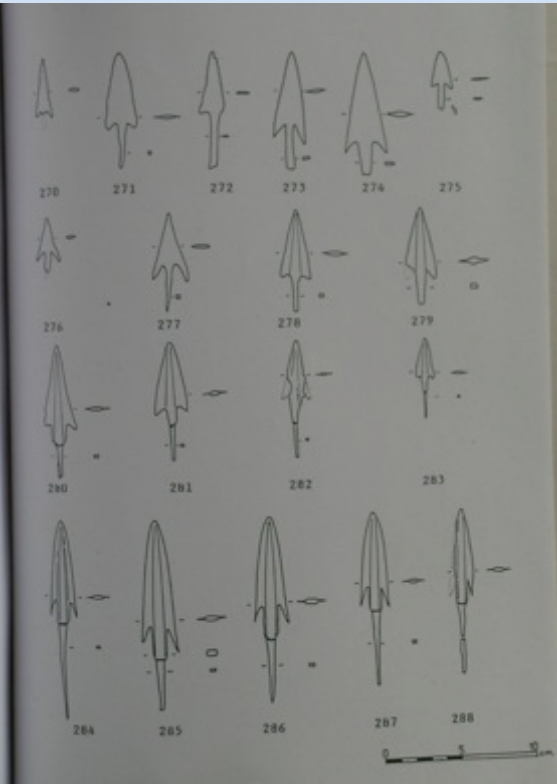
227. Hiérakonpolis. Palette de Narmer (Période protodynastique).
(D'après Shaw 1991, p. 8, fig. 1).

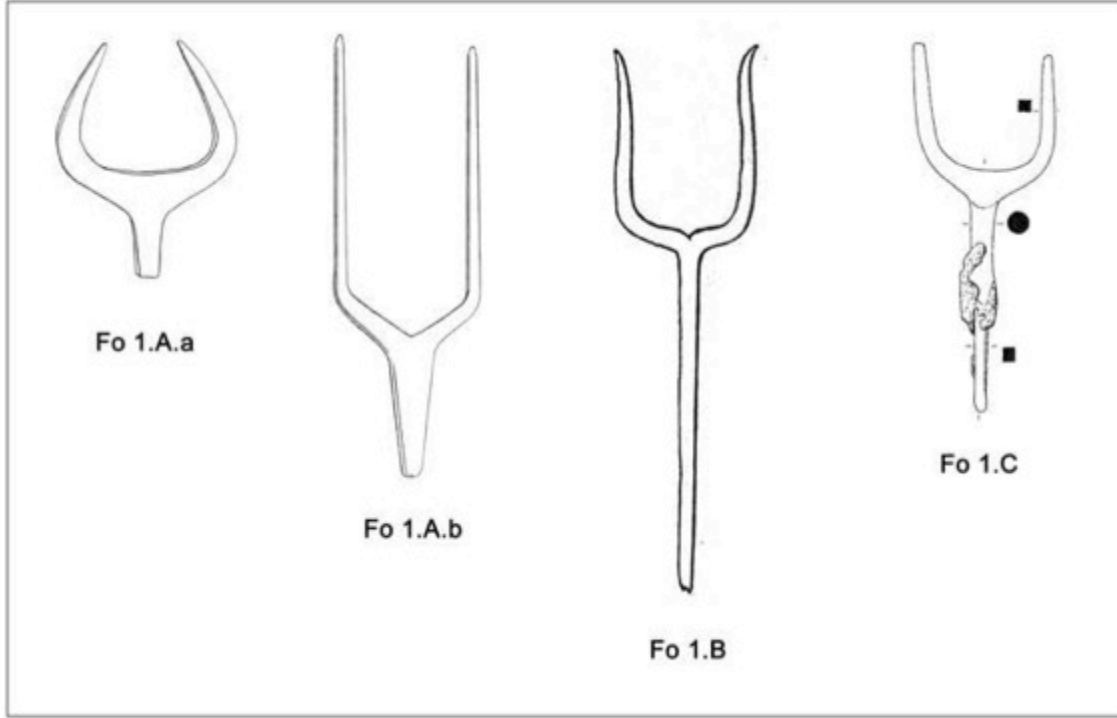


228. Plaquette d'Oudimou (3100 av. J.C.).
(D'après Aldred 1961, p. 128)

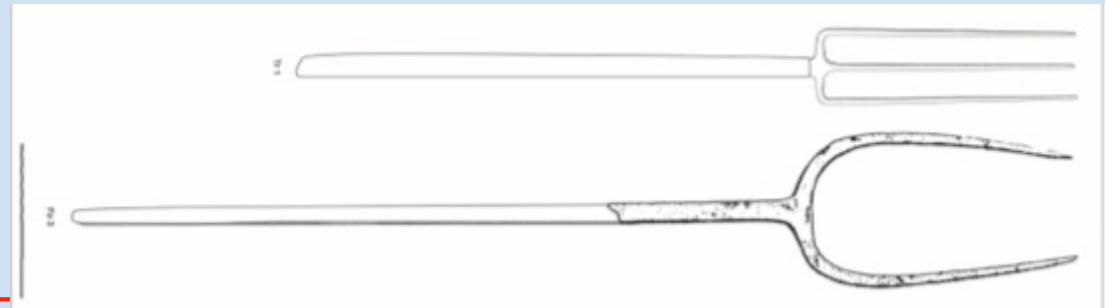
OK UÇLARI

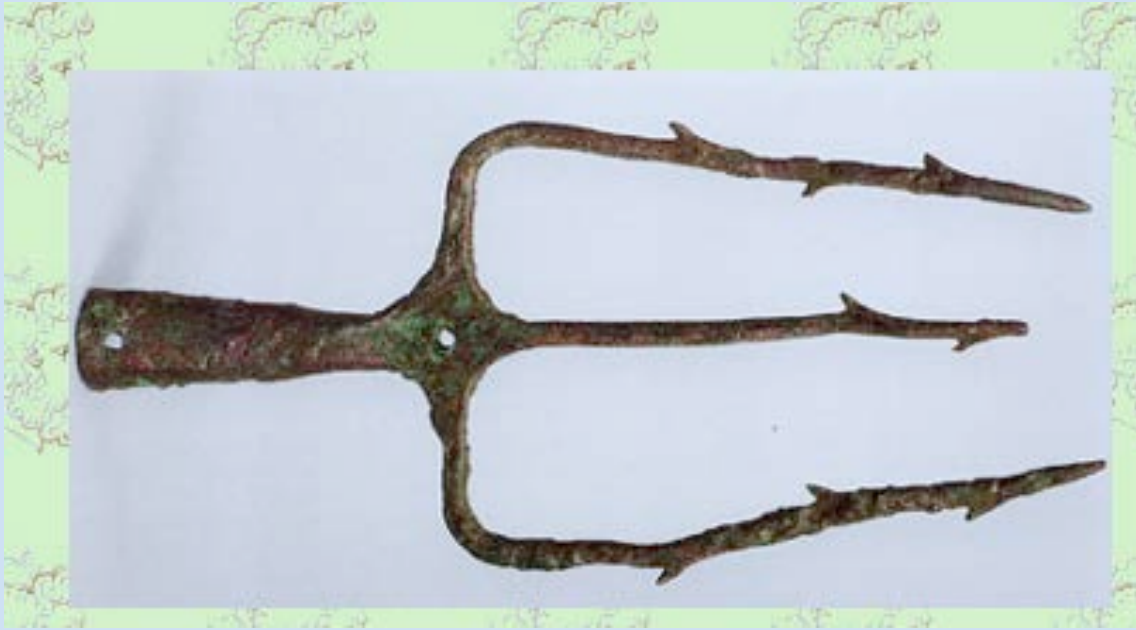


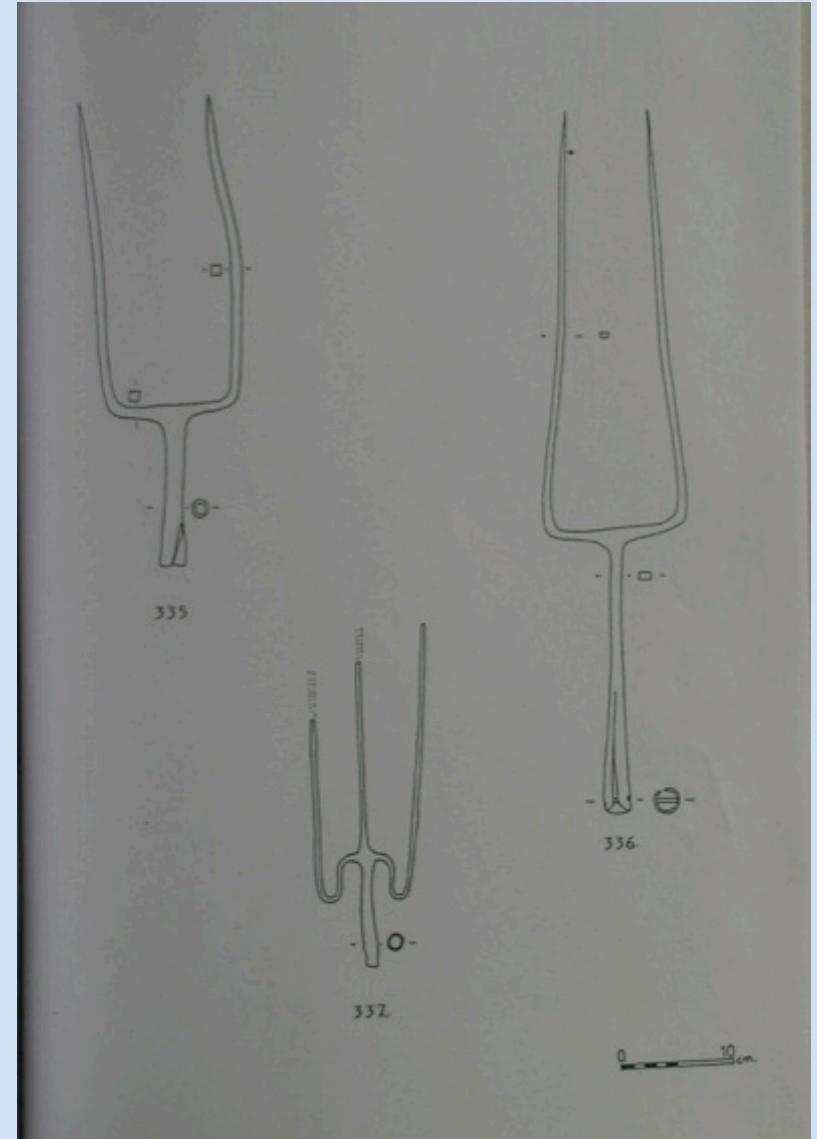
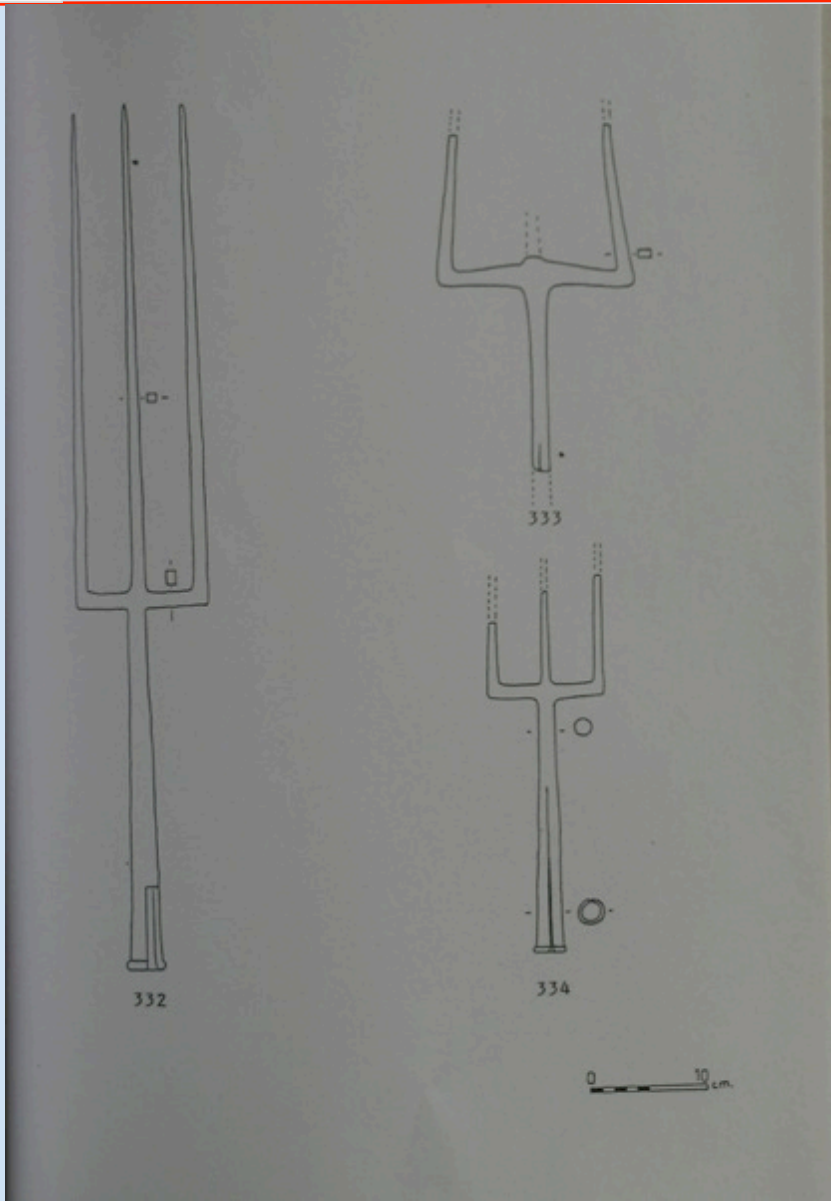




ÇATAL / TRİDENT

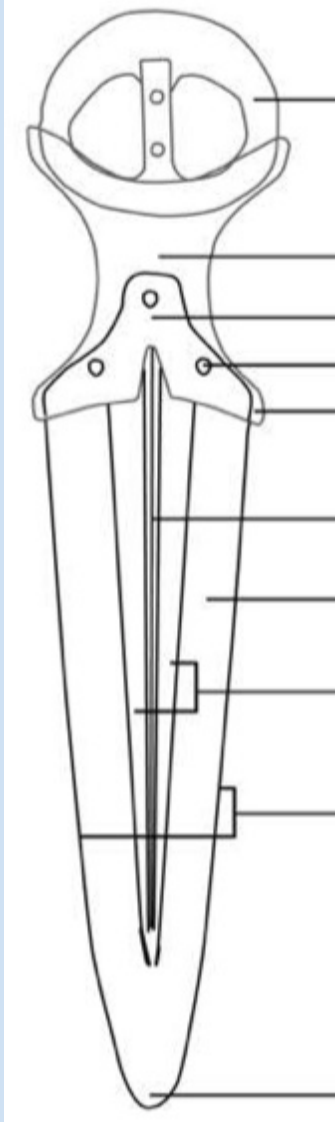






HANÇER VE KILIÇ





KABZA BAŞI

KABZA

DİL / SAP

PERÇİN

OMUZ

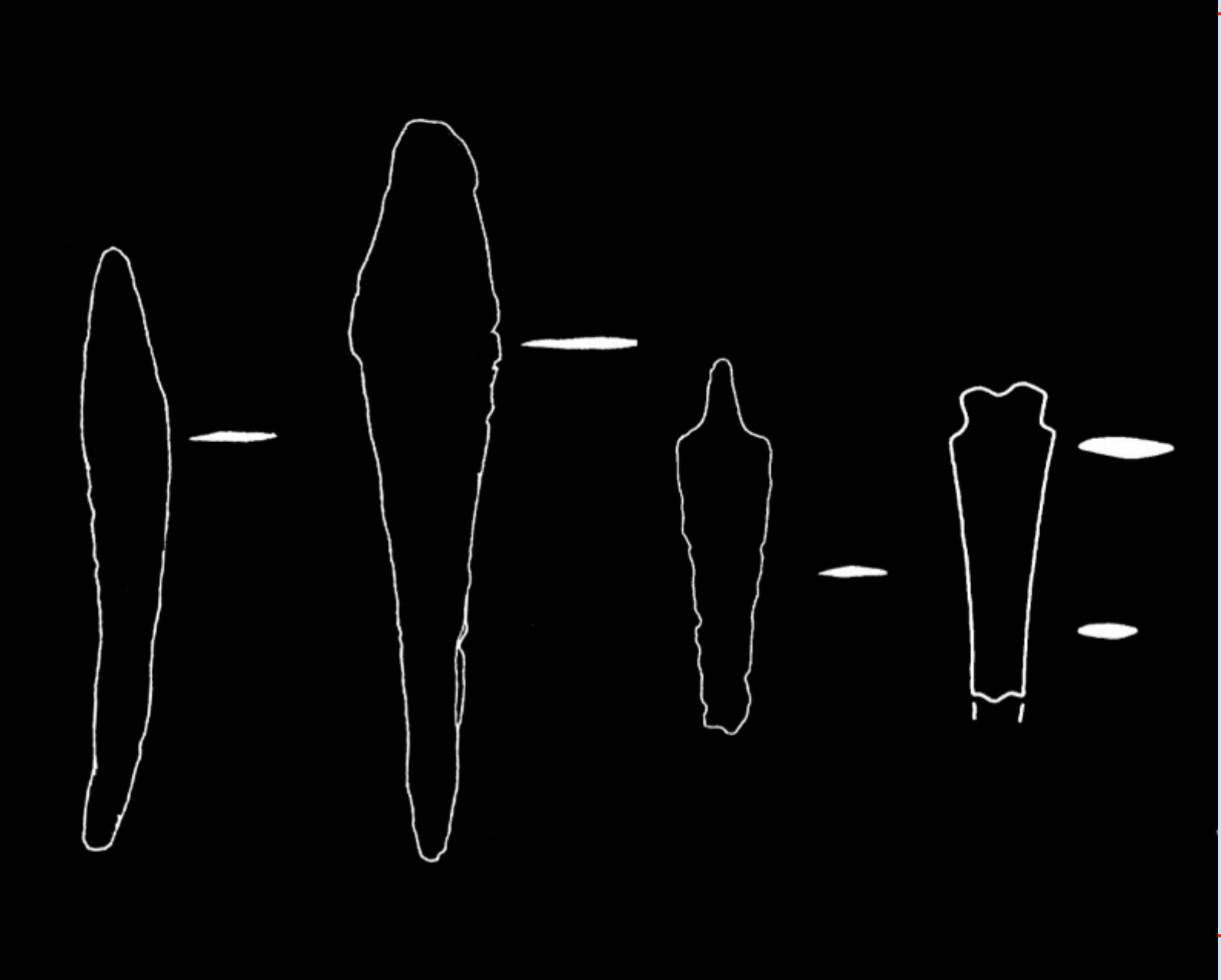
ZİH

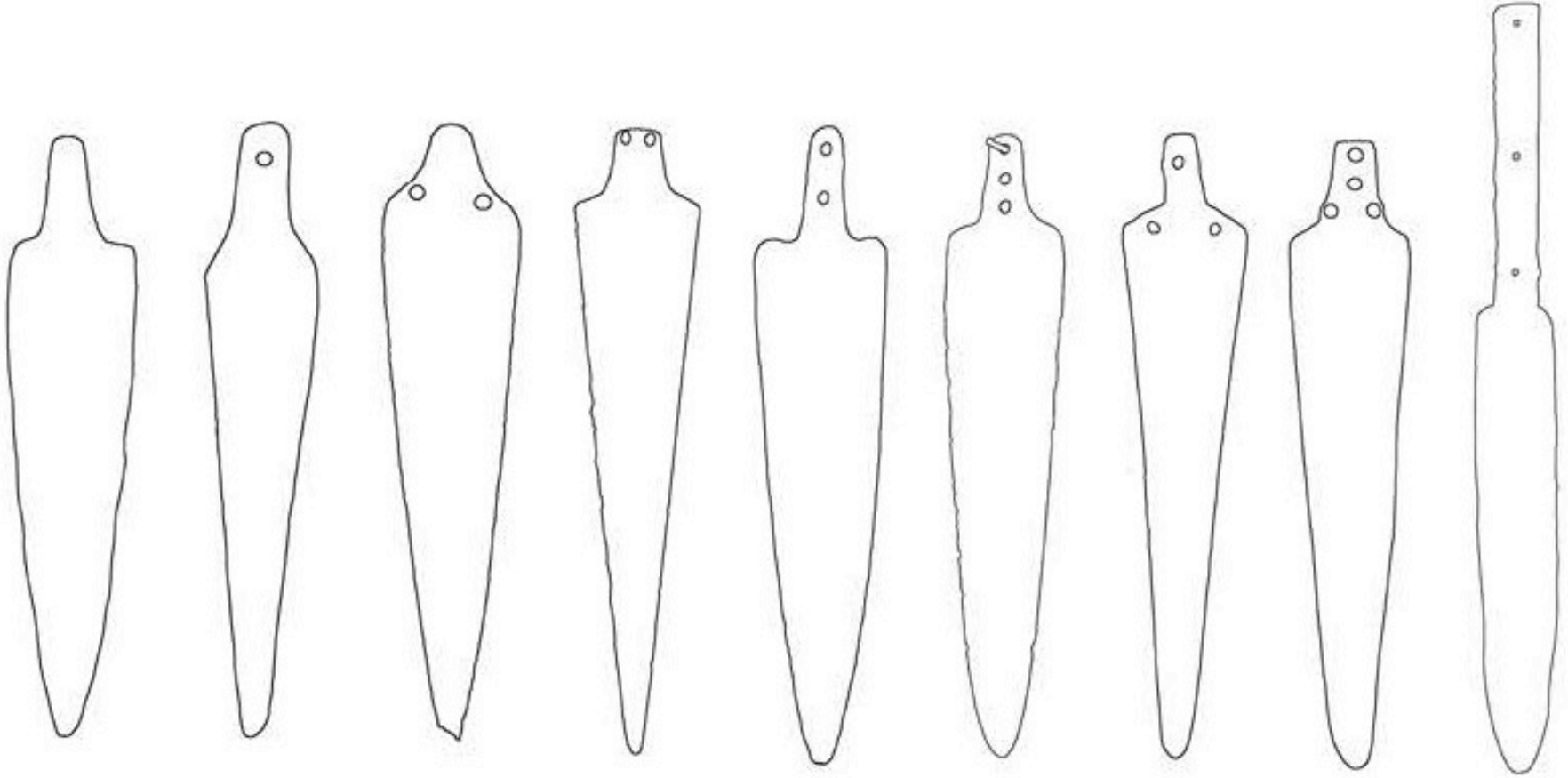
GÖVDE / BIÇAK / NAMLU

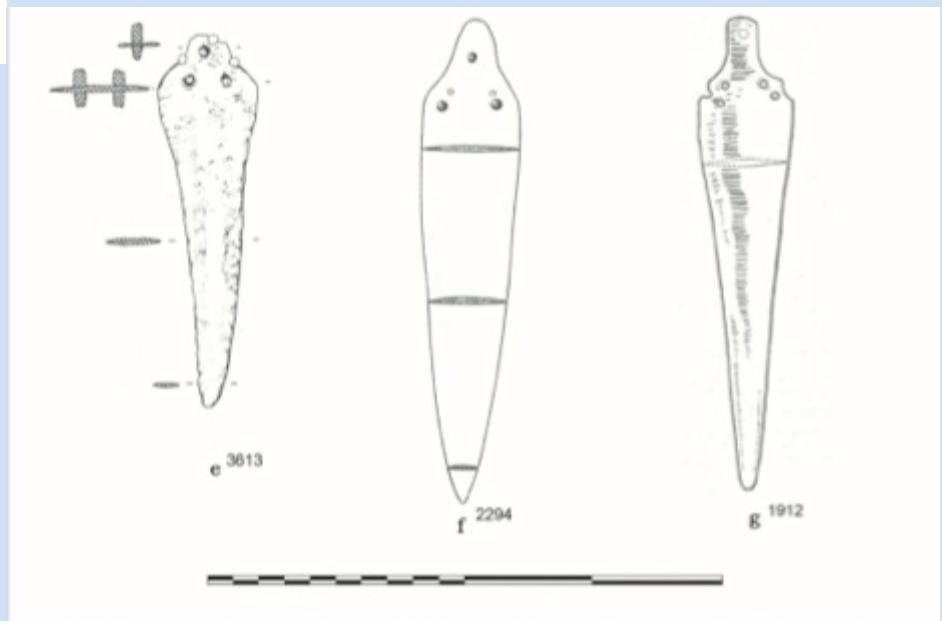
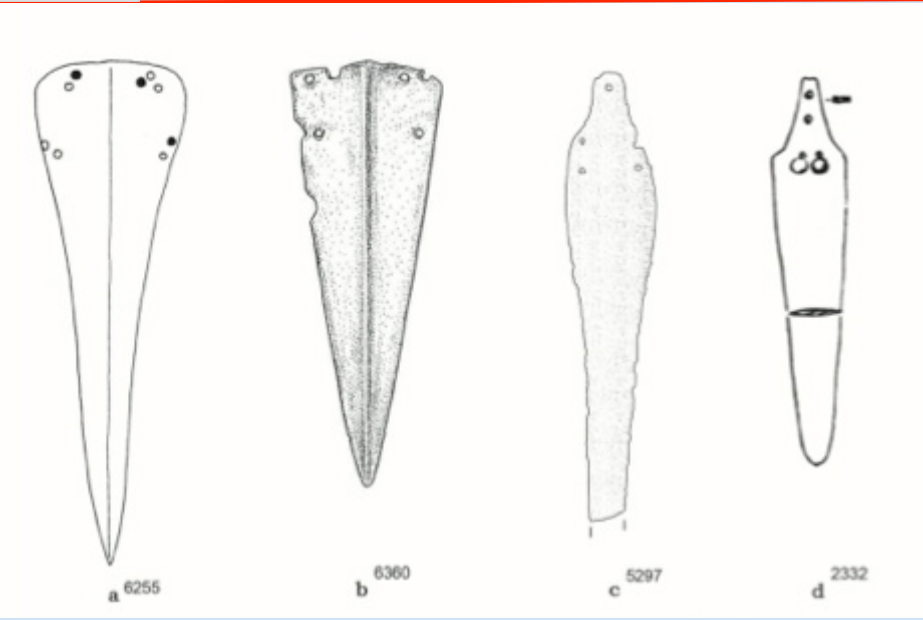
OLUK













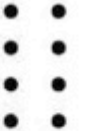


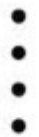


KENAR

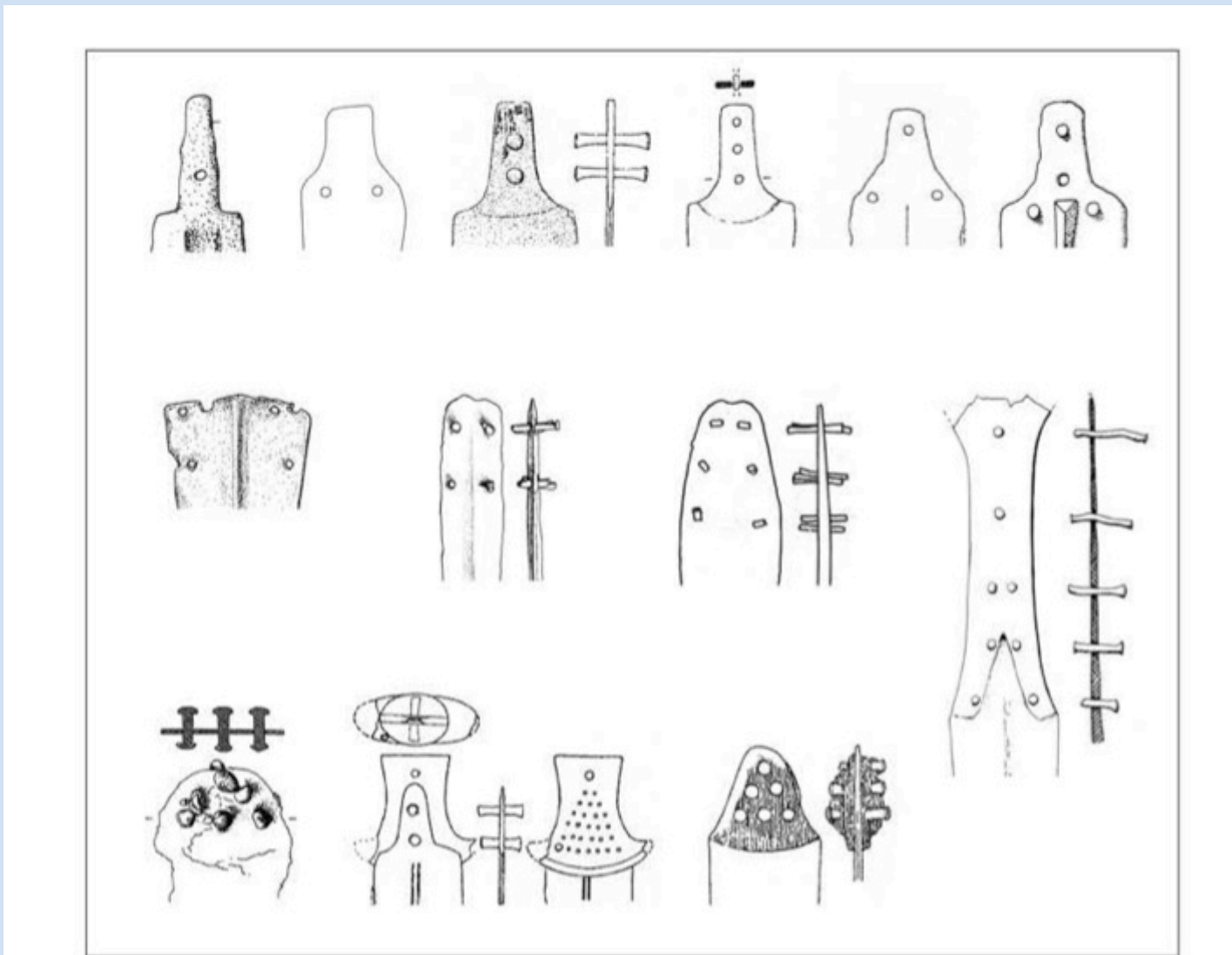
UÇ

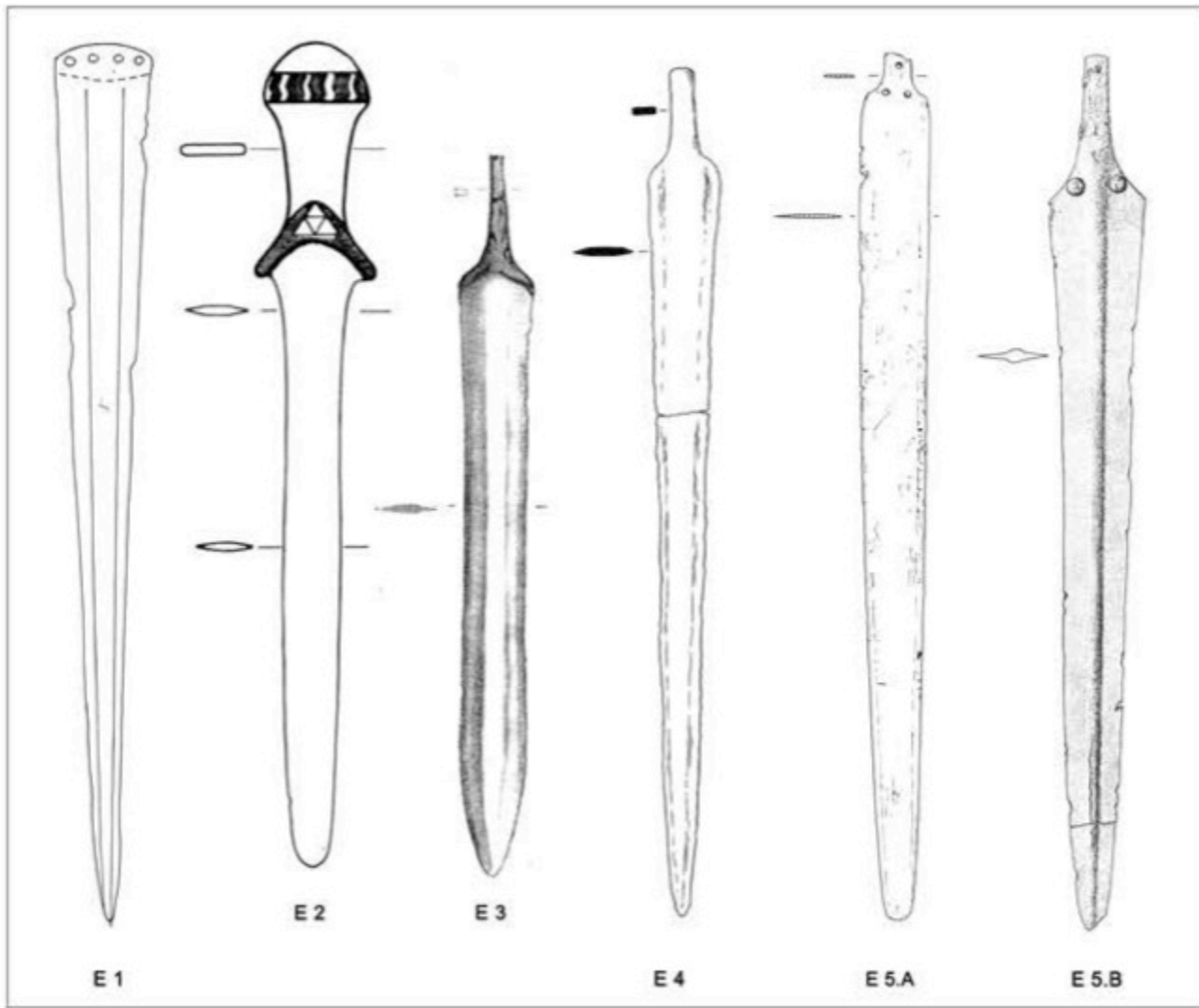






2 rivets	3 rivets	4 rivets	5 rivets	6 rivets	7 rivets	8 rivets
						
						
						
						
						





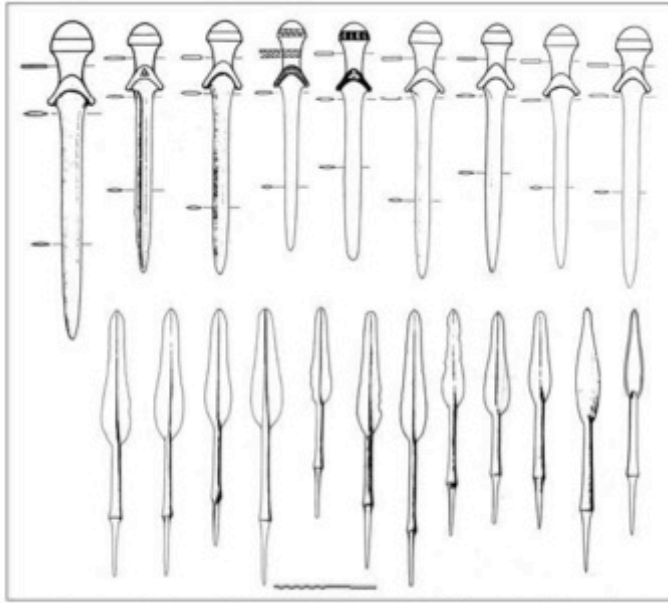
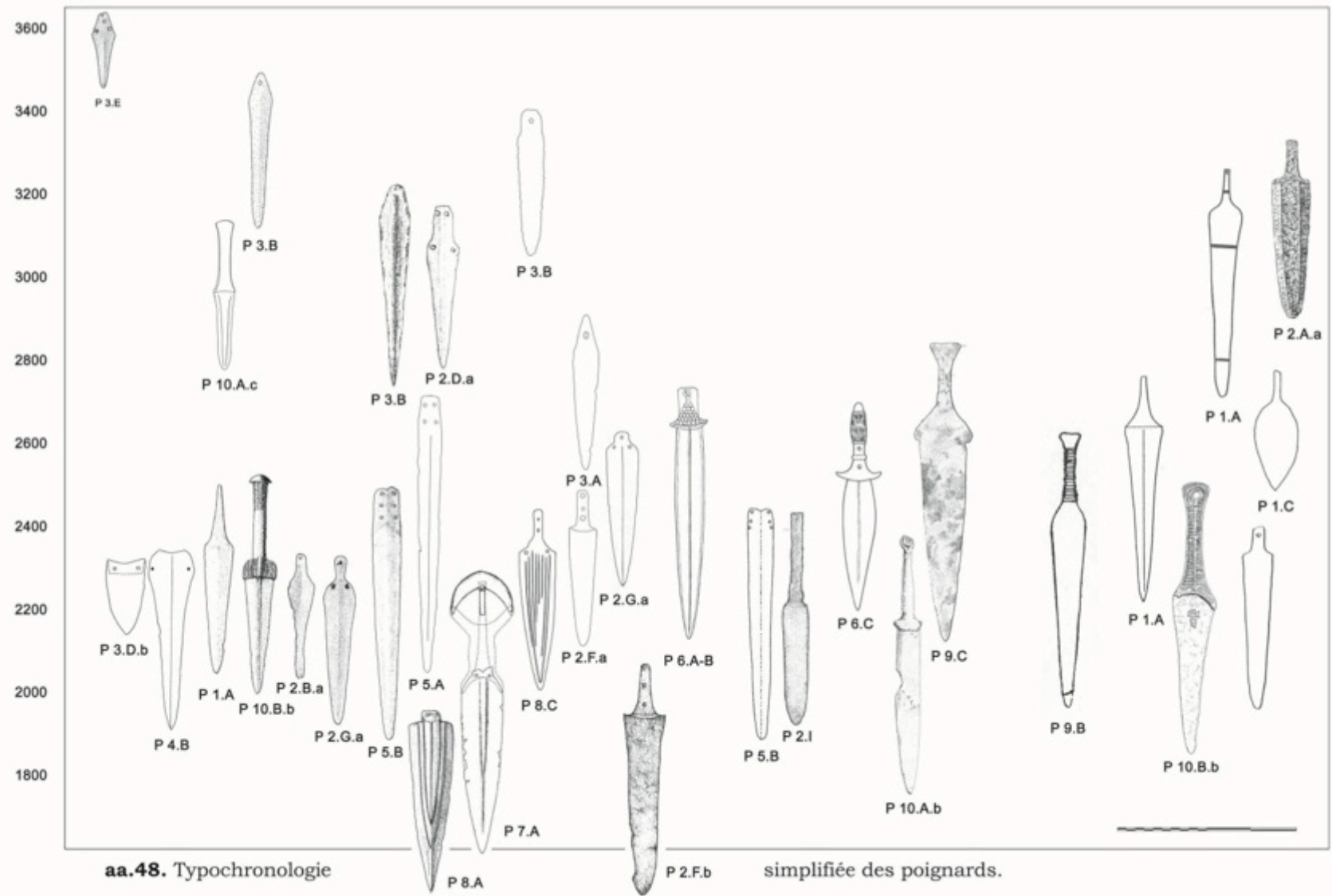


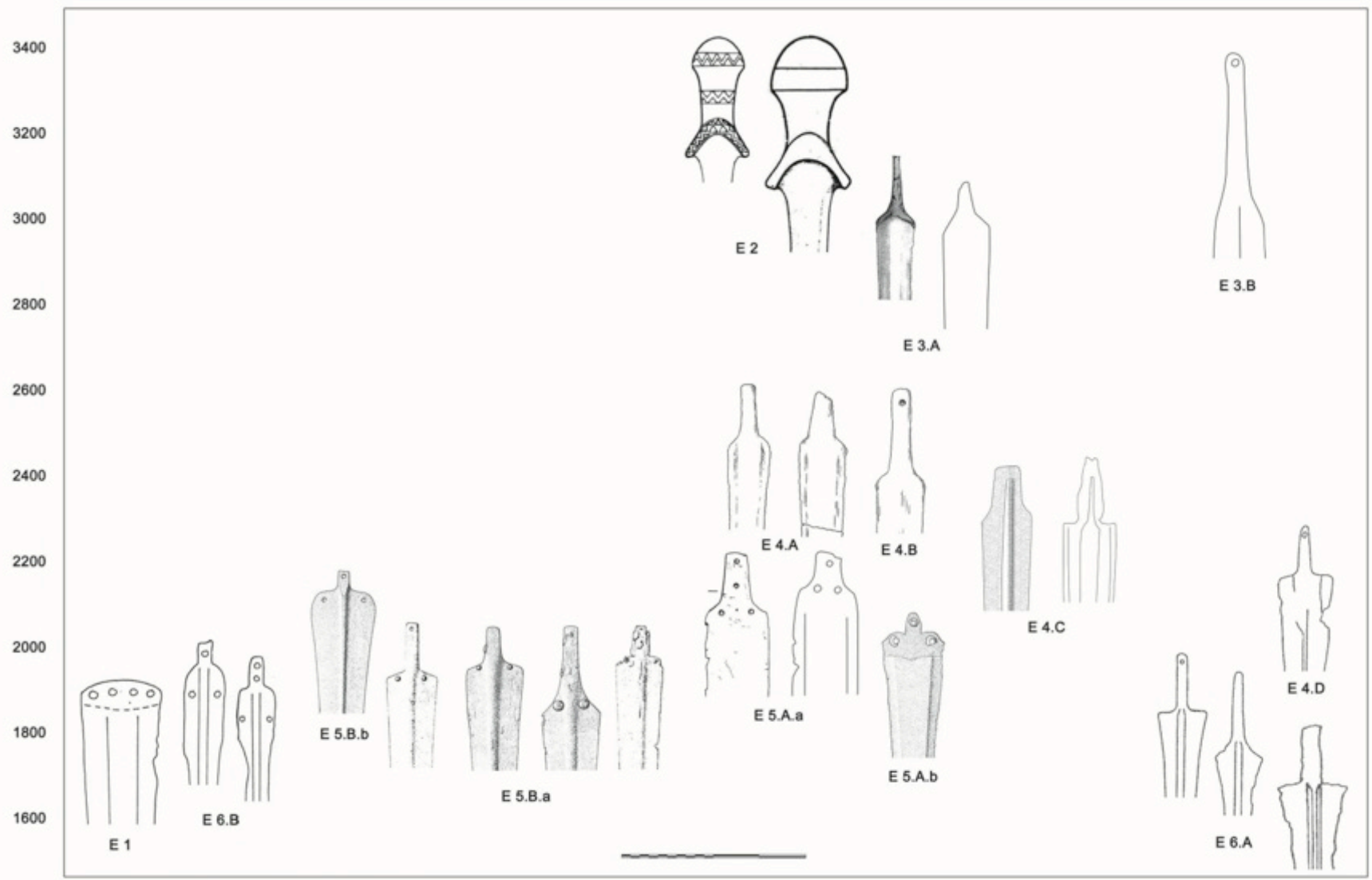
Fig. 3.24 – Arslantepe. Armes de la salle A 113 (Phase 3). (D'après Frangipane 1983, p. 39)





aa.48. Typochronologie

simplifiée des poignards.



aa.47. Typochronologie des épées.