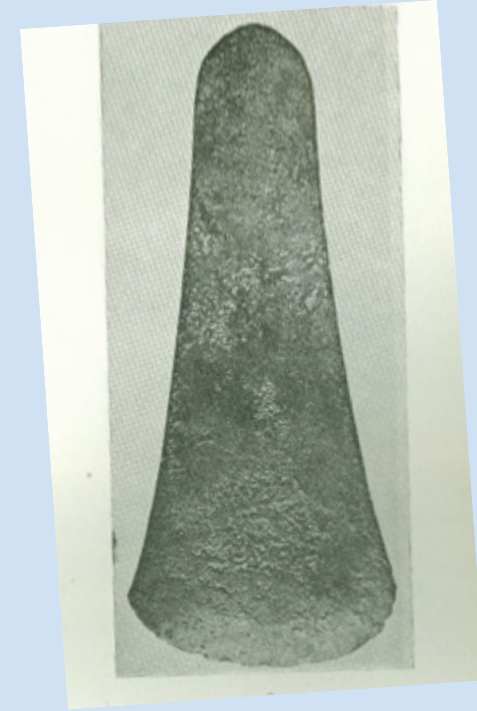
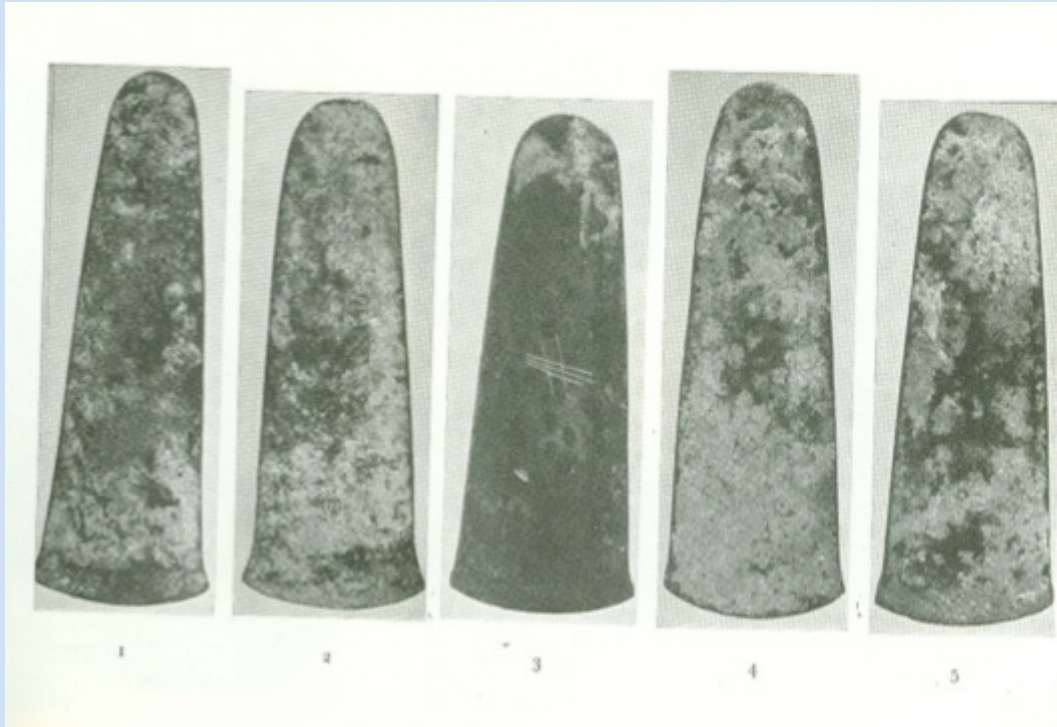
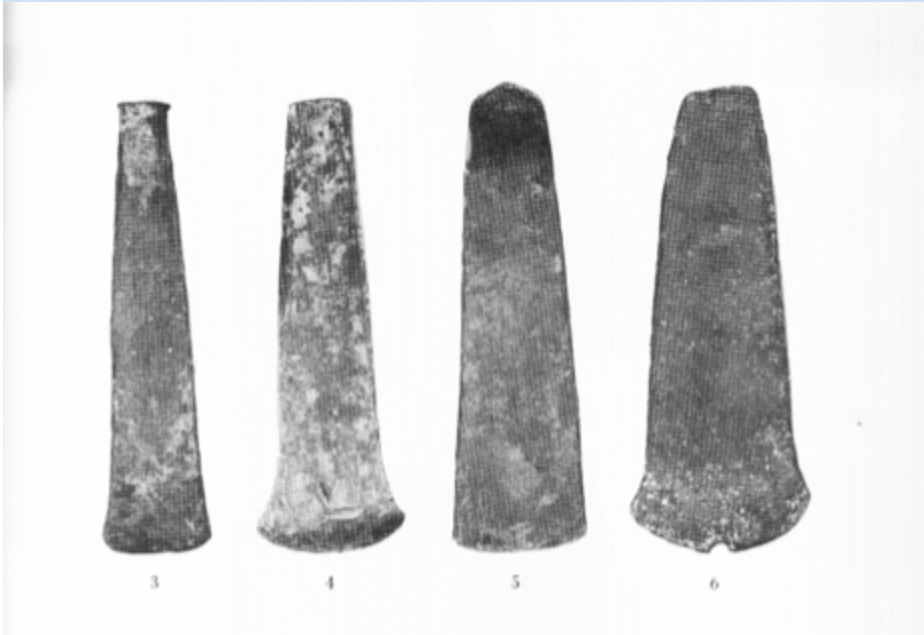




BALTALAR



YASSI BALTALAR





Broad flat axe / *Geniş yassı balta*
Arsenical copper / *Arsenikli bakır*,
L / U 14, İkiztepe-Samsun
25th c. BCE / MÖ 25. yy,
Samsun Müzesi



Long flat axe / *Uzun yassı balta*
Arsenical copper / *Arsenikli bakır*,
L / U 21, İkiztepe-Samsun
27th c. BCE / MÖ 27. yy,
Samsun Müzesi



Flat axe / *Yassı balta*
Arsenical copper / *Arsenikli bakır*,
L / U 8.2, İkiztepe-Samsun,
18th c. BCE / MÖ 18. yy,
Samsun Müzesi



Perforated flat axe / *Delikli yassı balta*
Arsenical copper / *Arsenikli bakır*,
L / U 13, Vezirköprü-Samsun,
18th c. BCE / MÖ 18. yy,
Samsun Müzesi



Flat axe / Yassı balta
Arsenical copper / Arsenikli bakır,
L / U 21, Provenance unknown /
Buluntu yeri bilinmiyor,
21st c. BCE / MÖ 21. yy,
Samsun Müzesi

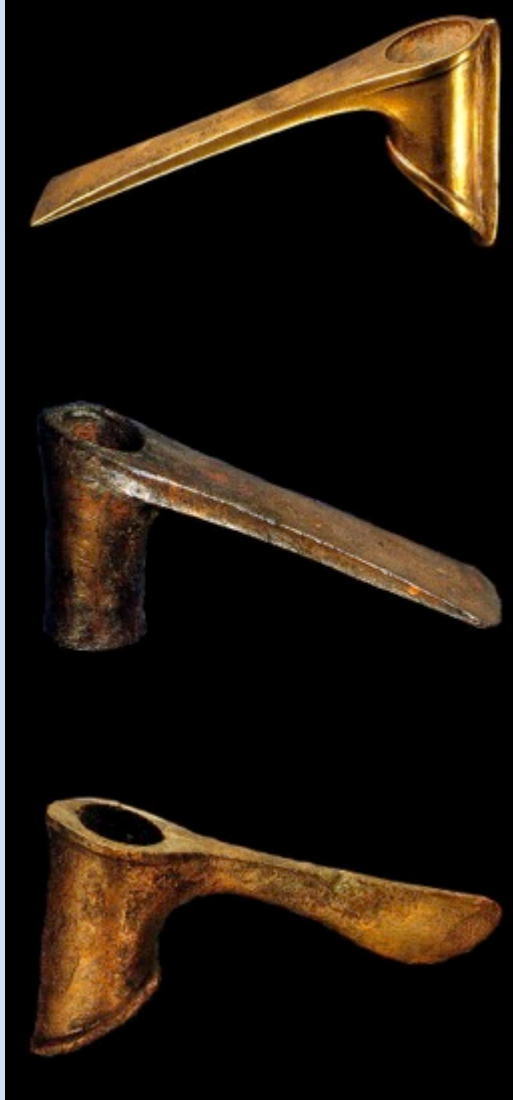
Lugged flat axe /
Kolcuklu yassı balta
Arsenical copper / Arsenikli bakır,
L / U 15.5, İkiztepe-Samsun,
21st c. BCE / MÖ 21. yy,
Samsun Müzesi



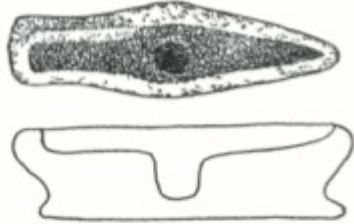


SAP DELİKLİ BALTALAR





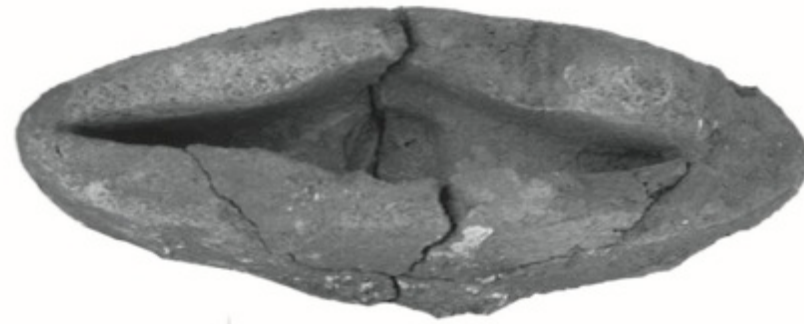
SUMER TİPİ BALTA



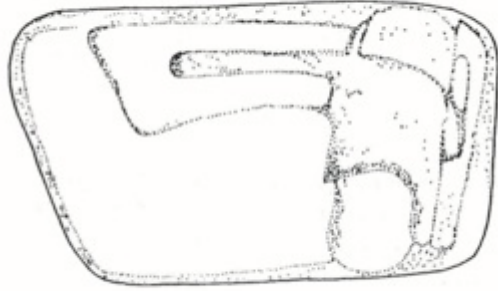
150. Tepe Hissar. Moule de hache H 3577 (Hissar III - BA IV).
(D'après Schmidt 1937, pl. 63).



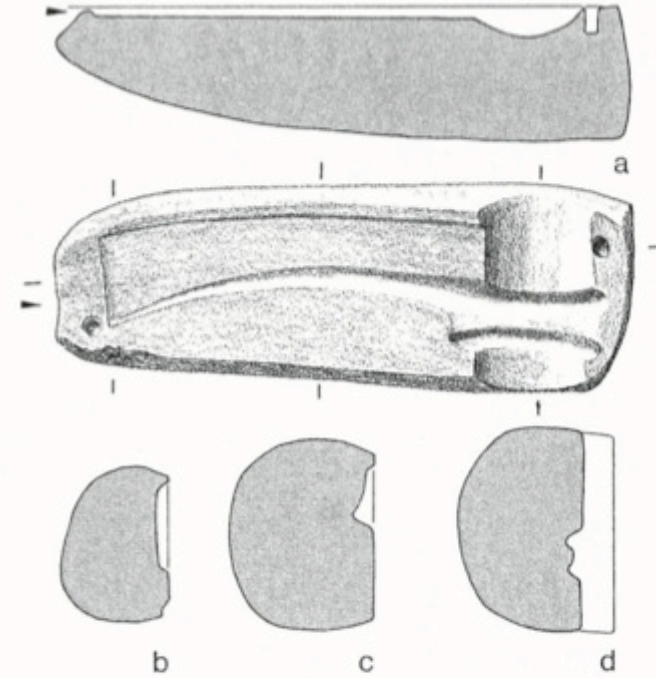
151. Tepe Ghabristan. Moules de hache-hermine
et de hache double.
(D'après Amiet 1986, p. 238, fig. 7).



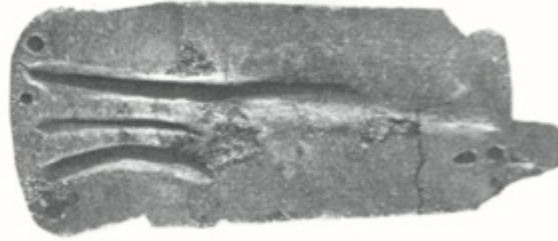
152. Arisman. Moule de hache à collet (Sialk III - Chalcolithique récent).
Argile.
(D'après Helwing 2005, p. 60, fig. 4).



133. Maşat Höyük. Moule de hache H 2.O.i.
Niveau incendié (fin BA).
Stéatite.
(D'après Emre 1996, fig. 86).



134. Maşat Höyük. Moule de hache H 2.O.c.
Niveau V (2000-1750 av. J.-C.).
Basalte.
(D'après Müller-Karpe 1994, pl. 43.6).



135. Kültepe. *Karum II.* Maison d'un marchand assyrien. Moule de hache à collet (type H 2.O.g). (D'après Ozgüç 1986, pl. 88.8b).



136. Kültepe. *Karum Ib.* Moule de hache à collet H 2.O.g. (D'après Ozgüç 1986, pl. 134.2b). Echelle approximative.



137. Kültepe. *Karum II.* Atelier. Moule de hache à collet (type H 2.C). (D'après Ozgüç 1986, pl. 87.1a).



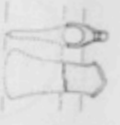





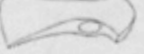



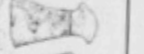



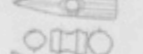
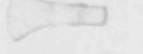







138. Kültepe. *Karum II.* Atelier. Moule de hache à collet (type H 2.O.g). (D'après Ozgüç 1986, pl. 87.3a-b).



139. Kültepe. *Karum II.* Atelier. Moule de hache (type H 2.C). (D'après Ozgüç 1986, pl. 86.1a).



| TİP 1 | TİP 2 | TİP 3 | TİP 4 | TİP 5 | TİP 6 |
|--|--|---|--|---|---|
|  Şek.1 |  Şek.2 |  Şek.3 |  Şek.4 |  Şek.5 |  Şek.6 |
|  Şek.7 |  Şek.9 |  Şek.10  Şek.11  Şek.12  Şek.13  Şek.14  Şek.15  Şek.16  Şek.17 |  Şek.18  Şek.19  Şek.20  Şek.21 |  Şek.22 |  Şek.23  Şek.24 |

Tablo: I





Axe with cylindrical shaft-hole / *Silindirik sap delikli balta*
Arsenical copper / *Arsenikli bakır*, L / U 10.4,
Amasya Region / Bölgesi 22nd c. BCE / MÖ 22. yy, Amasya Müzesi



Shaft-hole double-axe / *Sap delikli çift ağızlı balta*
Copper / *Bakır*, L / U 15, Amasya Region / Bölgesi
22nd c. BCE / MÖ 22. yy, Amasya Müzesi



Shaft-hole hammer-axe / *Sap delikli çekiç balta*
Arsenical copper / *Arsenikli bakır*, L / U 13.3,
Ordu, 22nd c. BCE / MÖ 22. yy, Samsun Müzesi



Shaft-hole hammer-axe / *Sap delikli çekiç balta*
Copper / *Bakır*, L / U 13.9, Taşova-Amasya,
22nd c. BCE / MÖ 22. yy, Amasya Müzesi



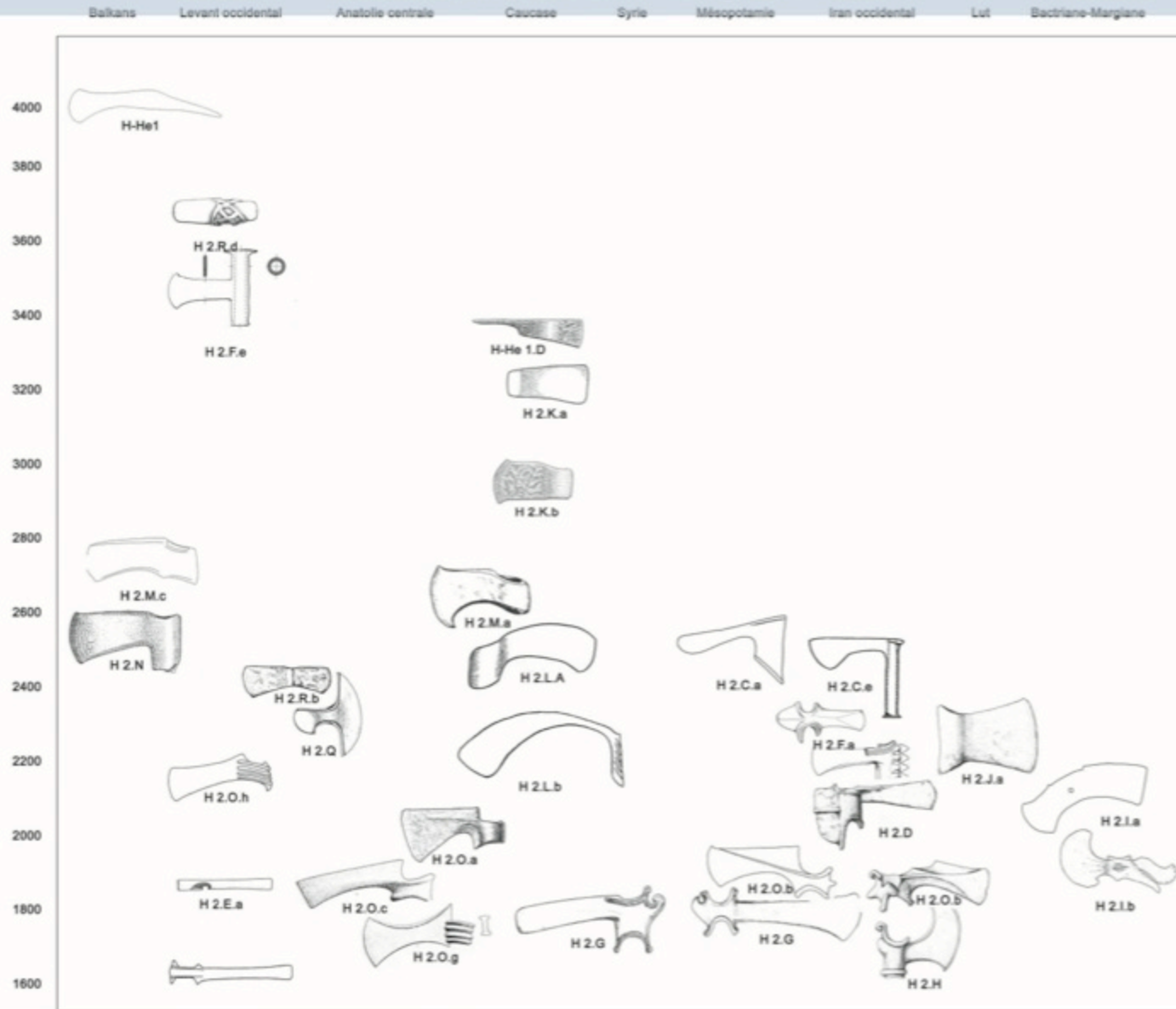
Shaft-hole axe / *Sap delikli balta*
Arsenical copper / *Arsenikli bakır*,
L / U 17.8, Kültepe/Kanesh-Kayseri
18th c. BCE / MÖ 18. yy.
Anadolu Medeniyetleri Müzesi-Ankara



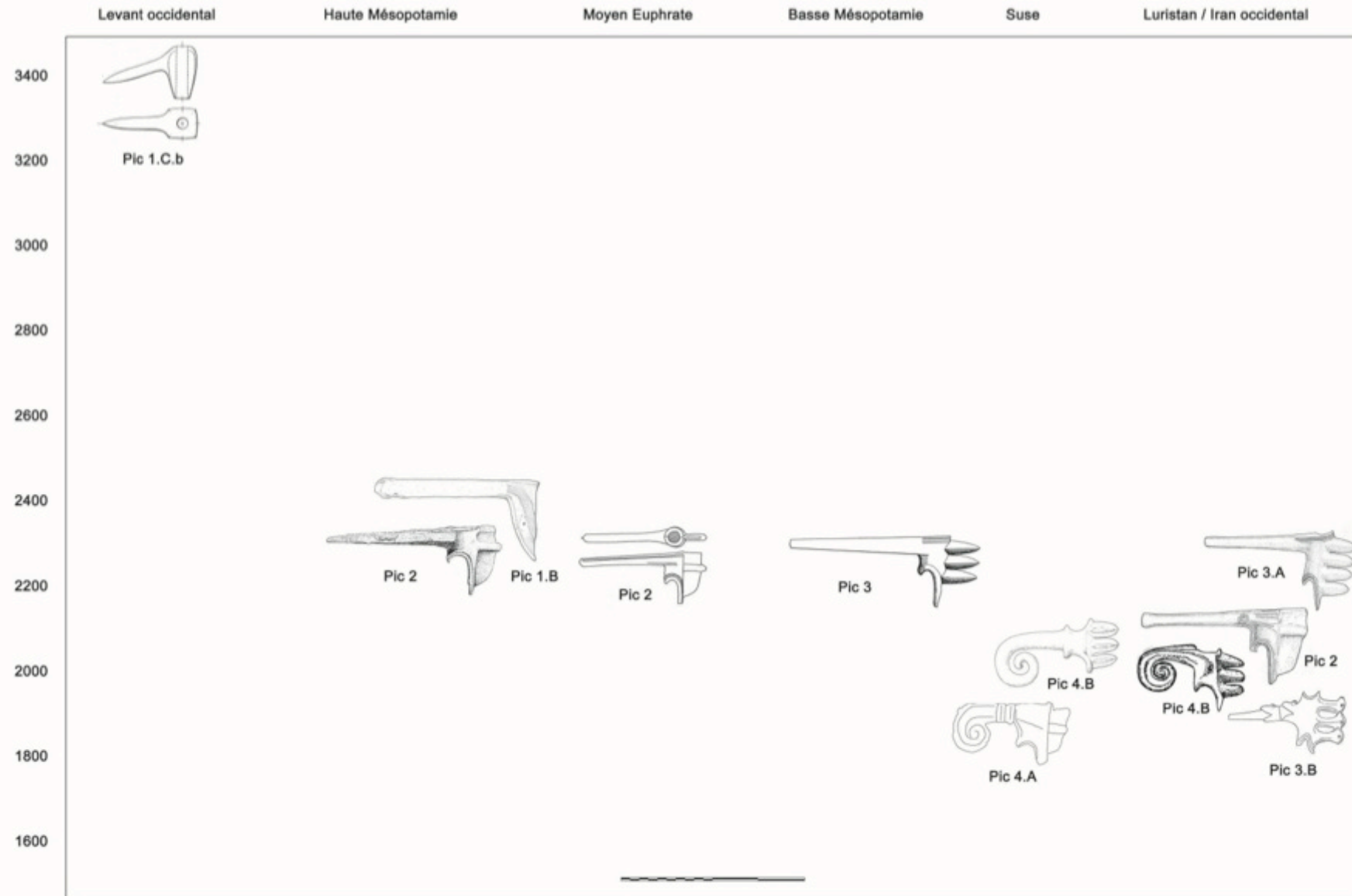
Shaft-hole axe / *Sap delikli balta*
Arsenical copper / *Arsenikli bakır*, L / U 15.6,
Provenance unknown / *Buluntu yeri bilinmiyor*
18th c. BCE / MÖ 18. yy. Samsun Müzesi



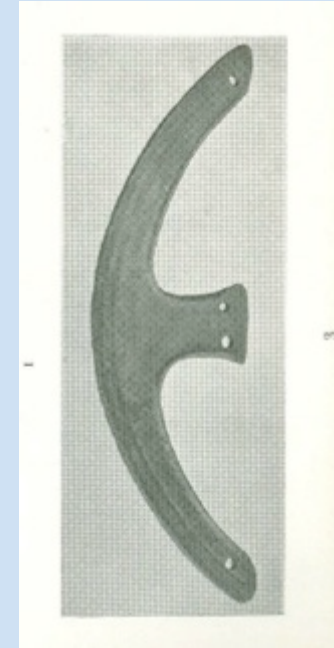
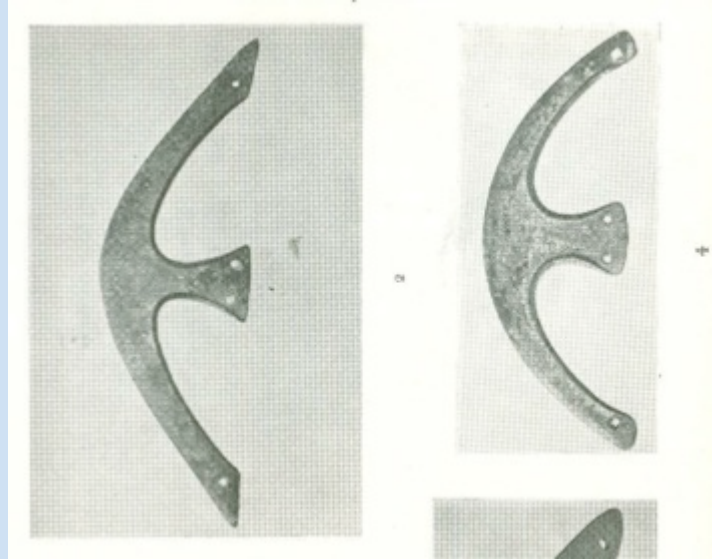
Axe with shaft-hole in the form of lion
faces / *Arslan yüzlü sap deliği olan balta*
Bronze / *Tunç*, L / U 11.8,
Kültepe/Kanesh-Kayseri
20th c. BCE / MÖ 20. yy. Kayseri Müzesi



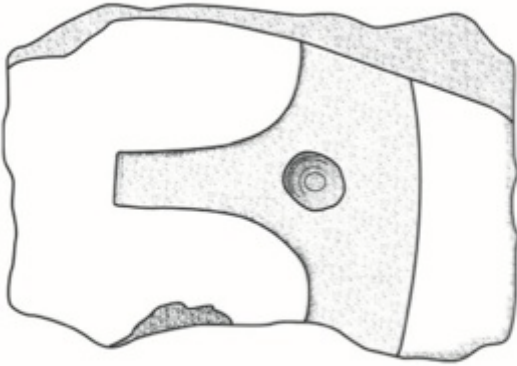
aa.39. Typochronologie des haches à collet.



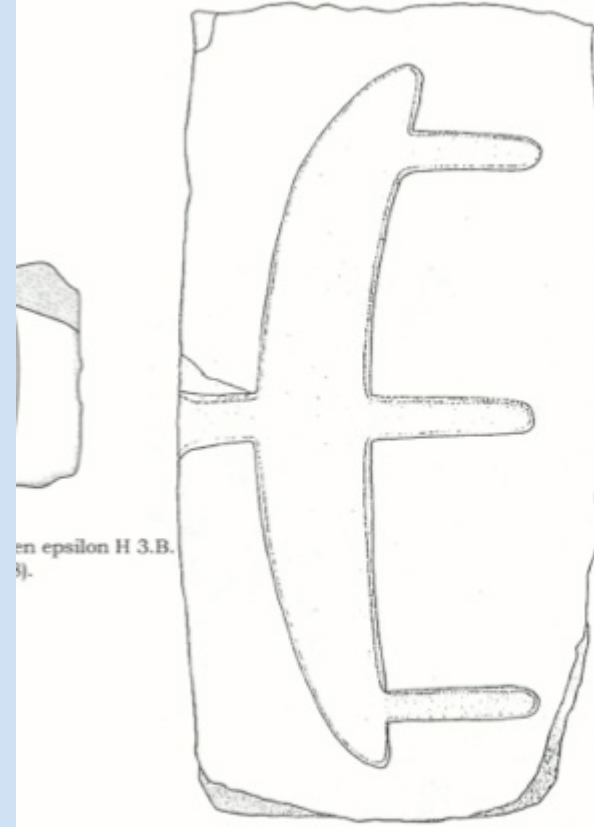
aa.42. Typochronologie des pics à collet.



AY BİÇİMLİ BALTALAR (TEBER)



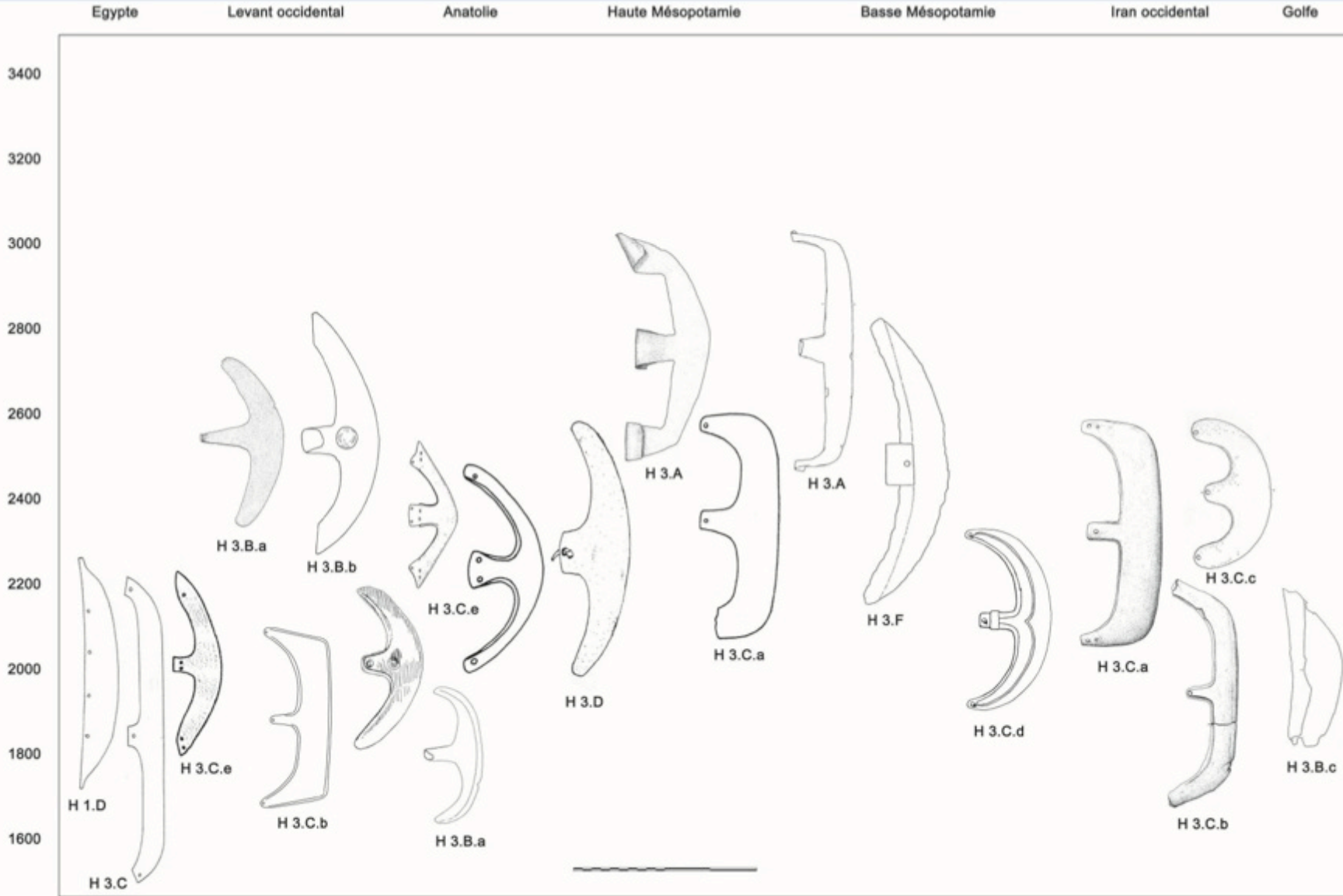
140. Byblos. Moule de hache en epsilon H 3.B.
(D'après Dunand 1937, pl. 108).



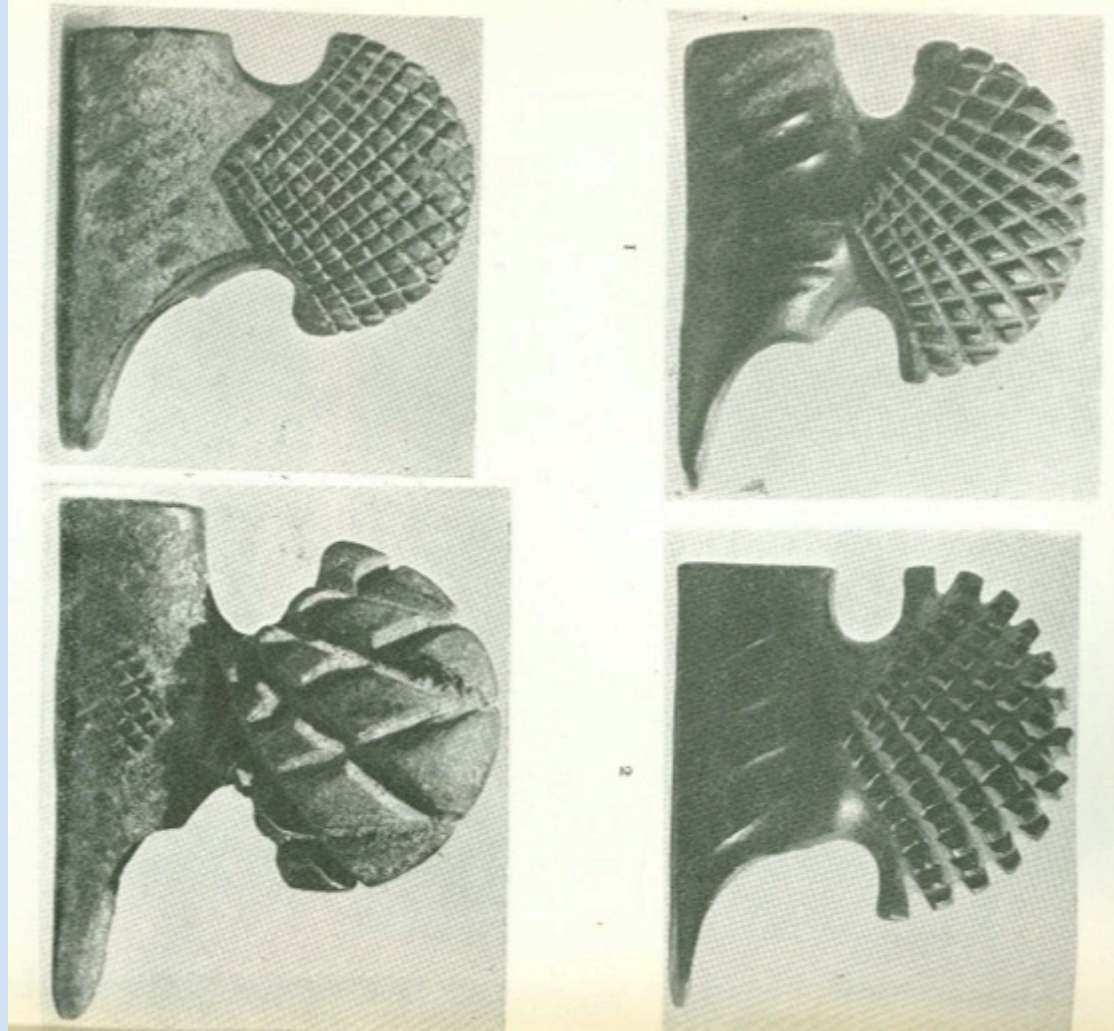
en epsilon H 3.B.
8).

141. Halawa. Moule de hache en epsilon H 3.A (DA II).
(D'après Montero Fenollós 1998, p. 74).
Sass et Sebbane proposent une datation située vers 2900 av. J.-C.
(Sass et Sebbane 2006, p. 84).

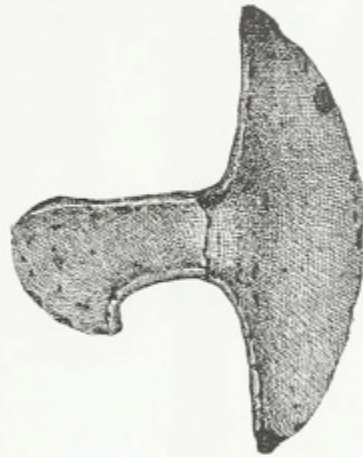




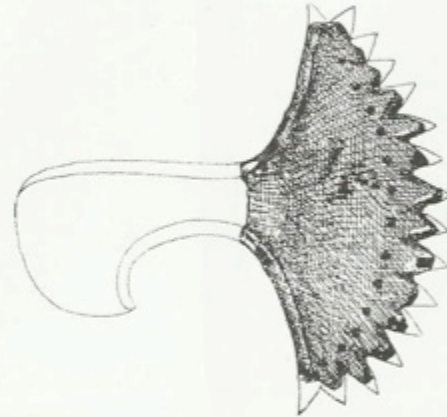
aa.40. Typochronologie des haches en epsilon.



HALBERD TİPİ BALTALAR



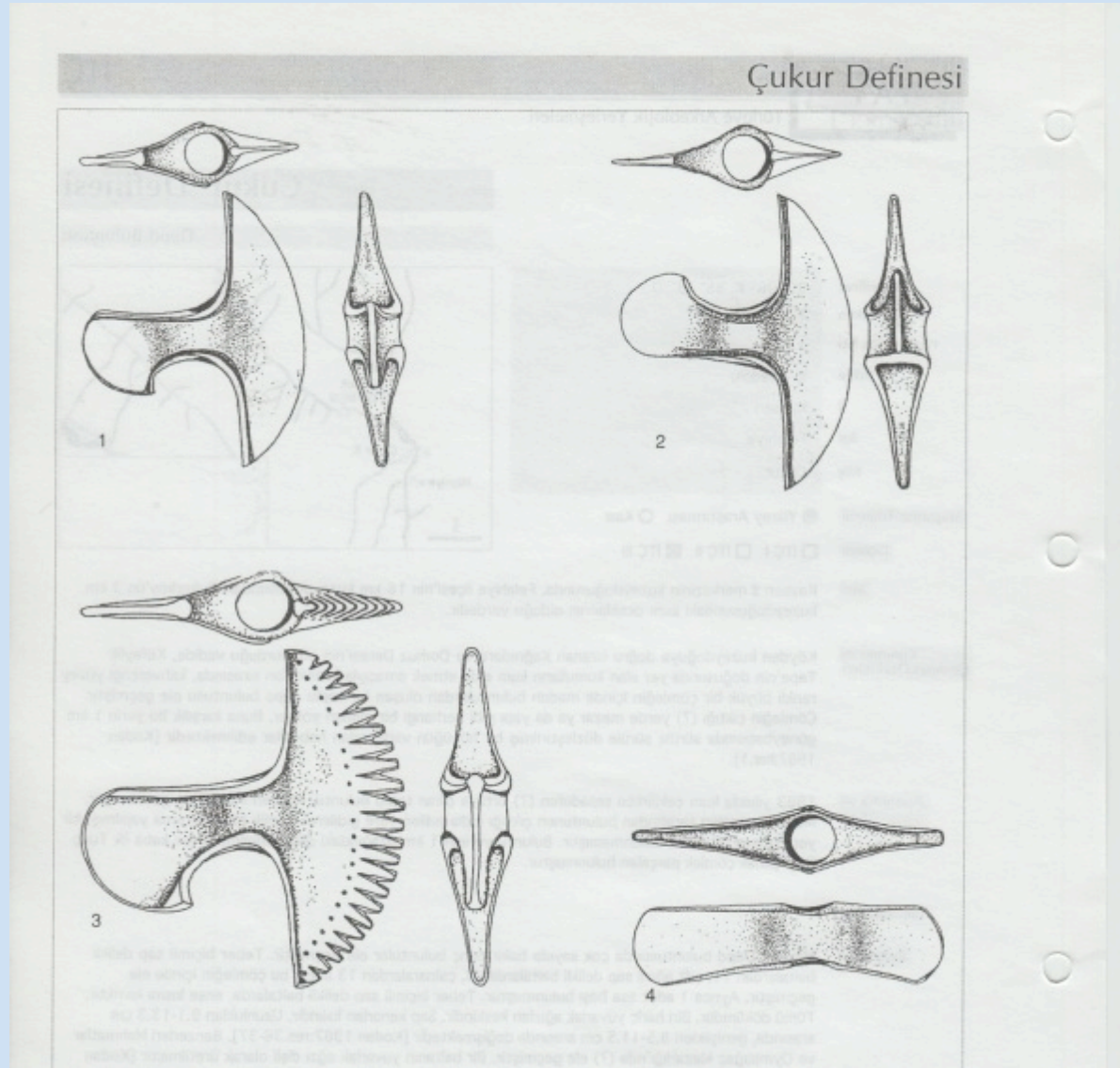
Shaft-hole crescentic axe /
Sap delikli aydemir balta
Arsenical copper / Arsenikli bakır,
H / Y 10.7, Mahmatlar-Amasya
22nd c. BCE / MÖ 22. yy,
Anadolu Medeniyetleri Müzesi-Ankara



Shaft-hole crescentic axe with barbed
blade / Diken ağızlı aydemir balta
Arsenical copper / Arsenikli bakır,
H / Y 12.2, Mahmatlar-Amasya
22nd c. BCE / MÖ 22. yy,
Anadolu Medeniyetleri Müzesi-Ankara



Crescentic axe / Hilal balta
Bronze / Tunç, H / Y 21.4,
Demircihüyük/Sarıket-Eskişehir,
22nd c BCE / MÖ 22. yy,
Eskişehir Müzesi





These ceremonial axes all date from the XIIIth Dynasty [c. 1900 B.C.]. At the right, the blades are attached to a short gold sheath at the top of the wooden haft. Beirut Museum.

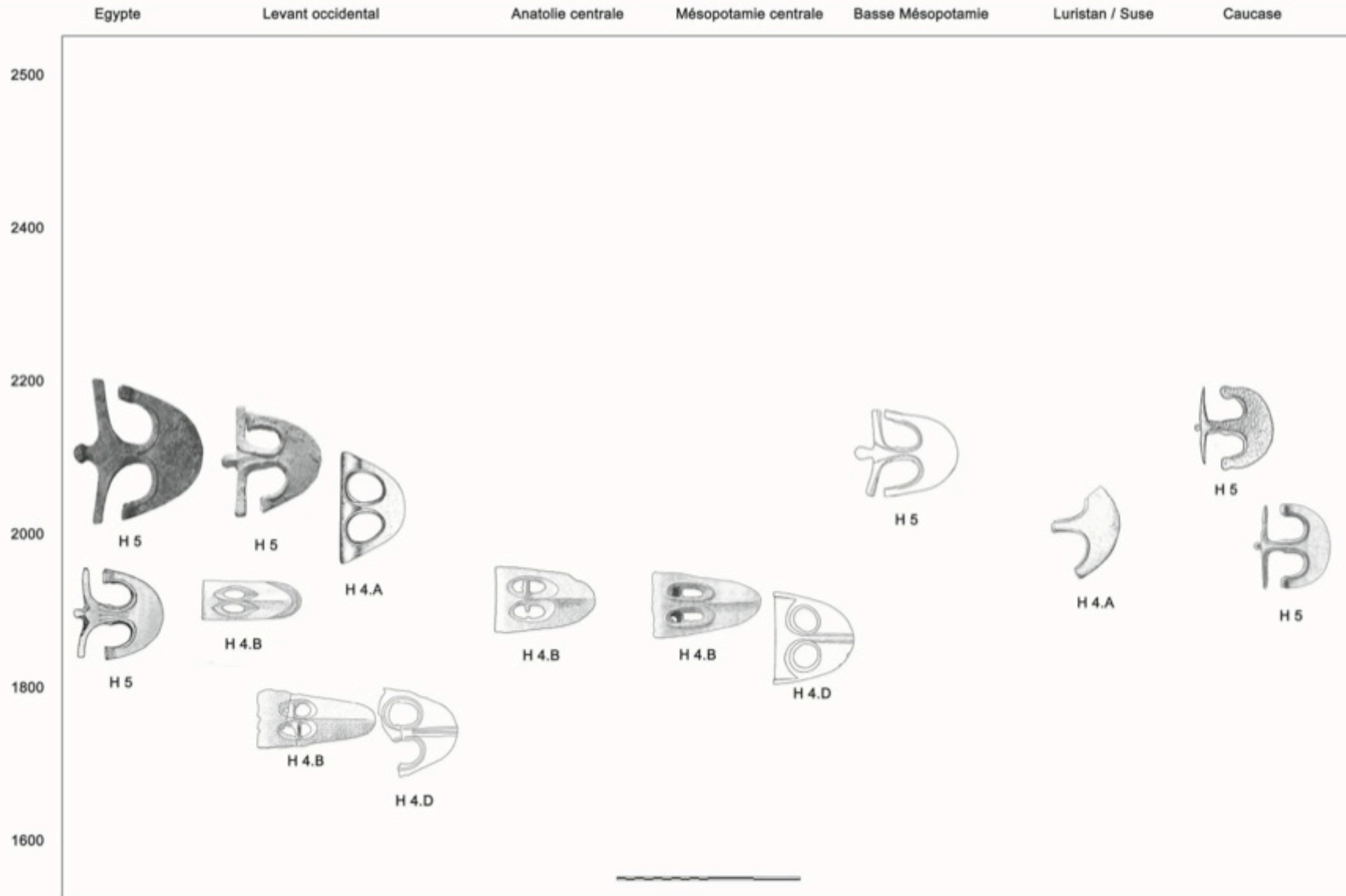
170

Gold ceremonial eye
blades from the Obelisks
Temple at Byblos

GÖZLÜ BALTALAR



149. Kültepe. a- Moule pour hache plate H 1.B et poignard P 3 (karum Ib).
b- Moule pour hache fenestrée H 4.B (karum II).
c- Moule pour hache à collet H 2.O.g (karum Ib).
(D'après Ozguç 2003, p. 245-249, fig. 258, 259 et 266).



aa.41. Typochronologie des haches fenestrées.



Lugged flat axe / *Kolcuclu yassi balt*
Arsenical copper / *Arsenikli bakır*,
L / U 18.2, Merzifon-Amasya
18th c. BCE / MÖ 18. yy.
Amasya Müzesi

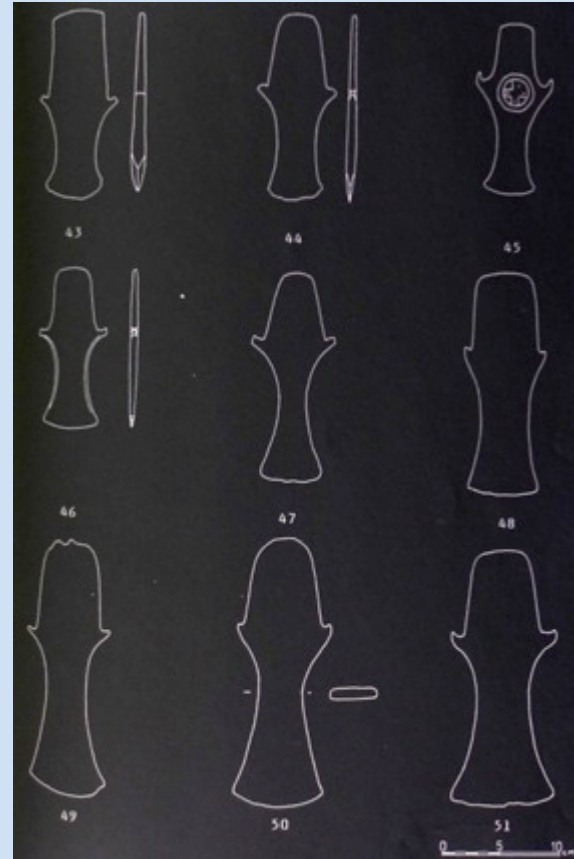
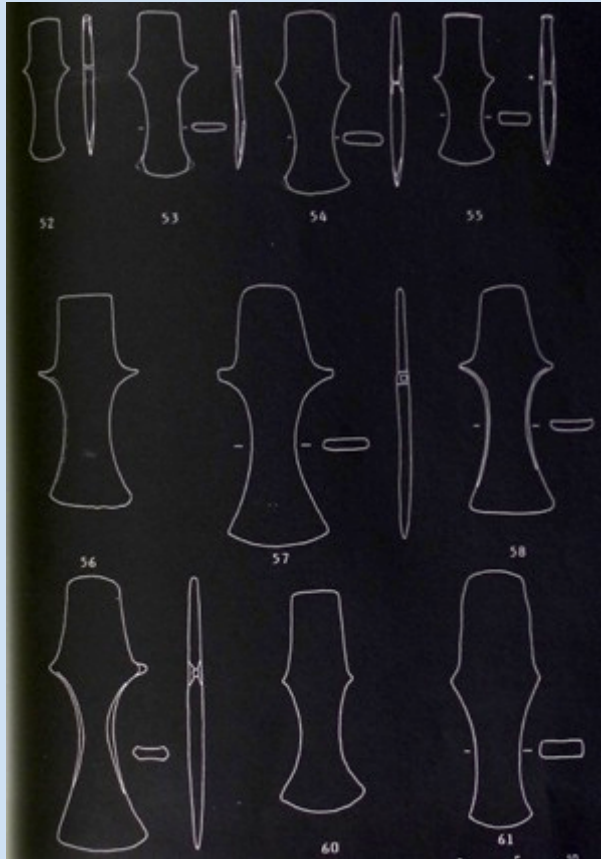


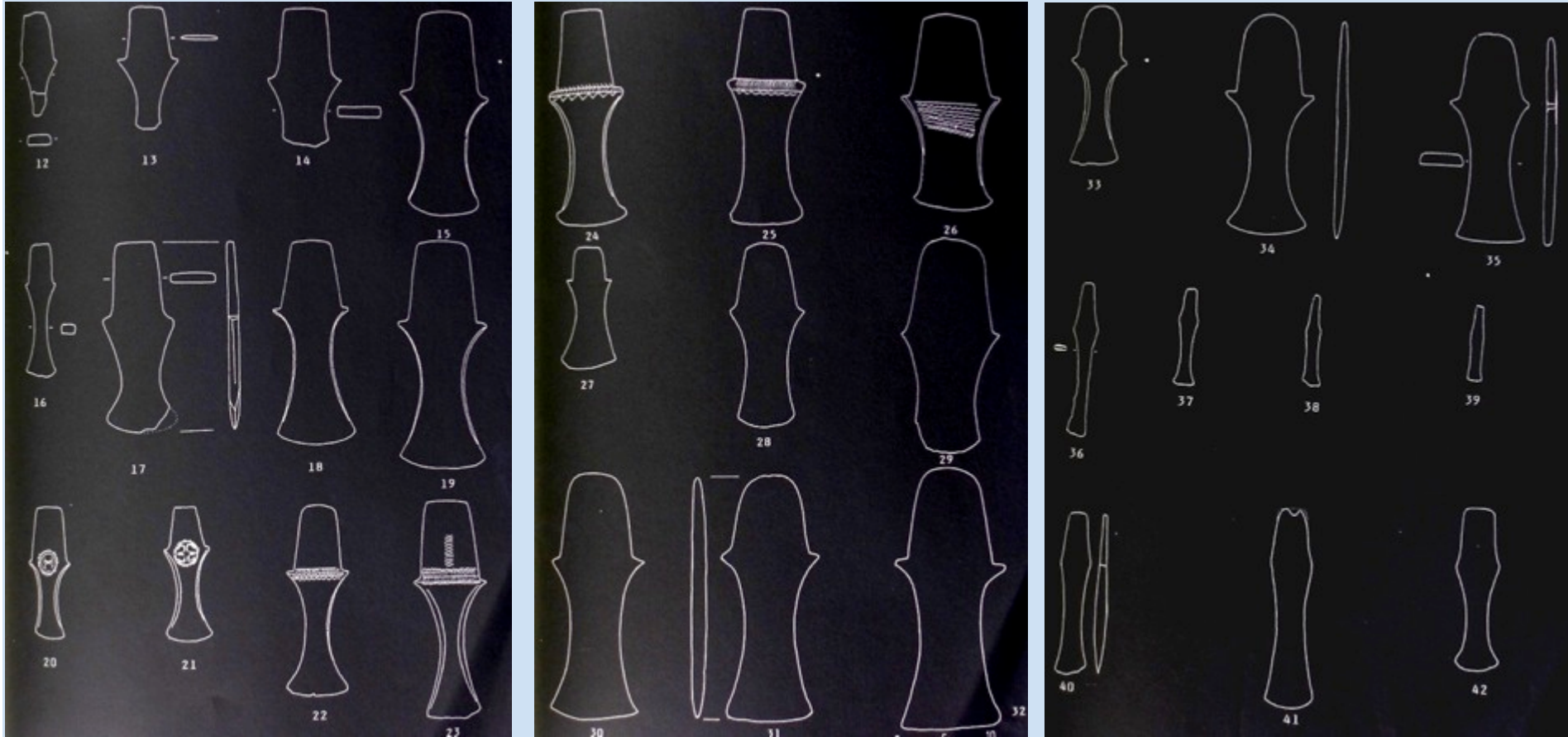
Lugged flat axe with royal insignia /
Krali damgalı kolcuclu yassi balt
Arsenical copper / *Arsenikli bakır*,
L / U 12.5, Karahöyük-Konya
18th c. BCE / MÖ 18. yy.
Konya Müzesi

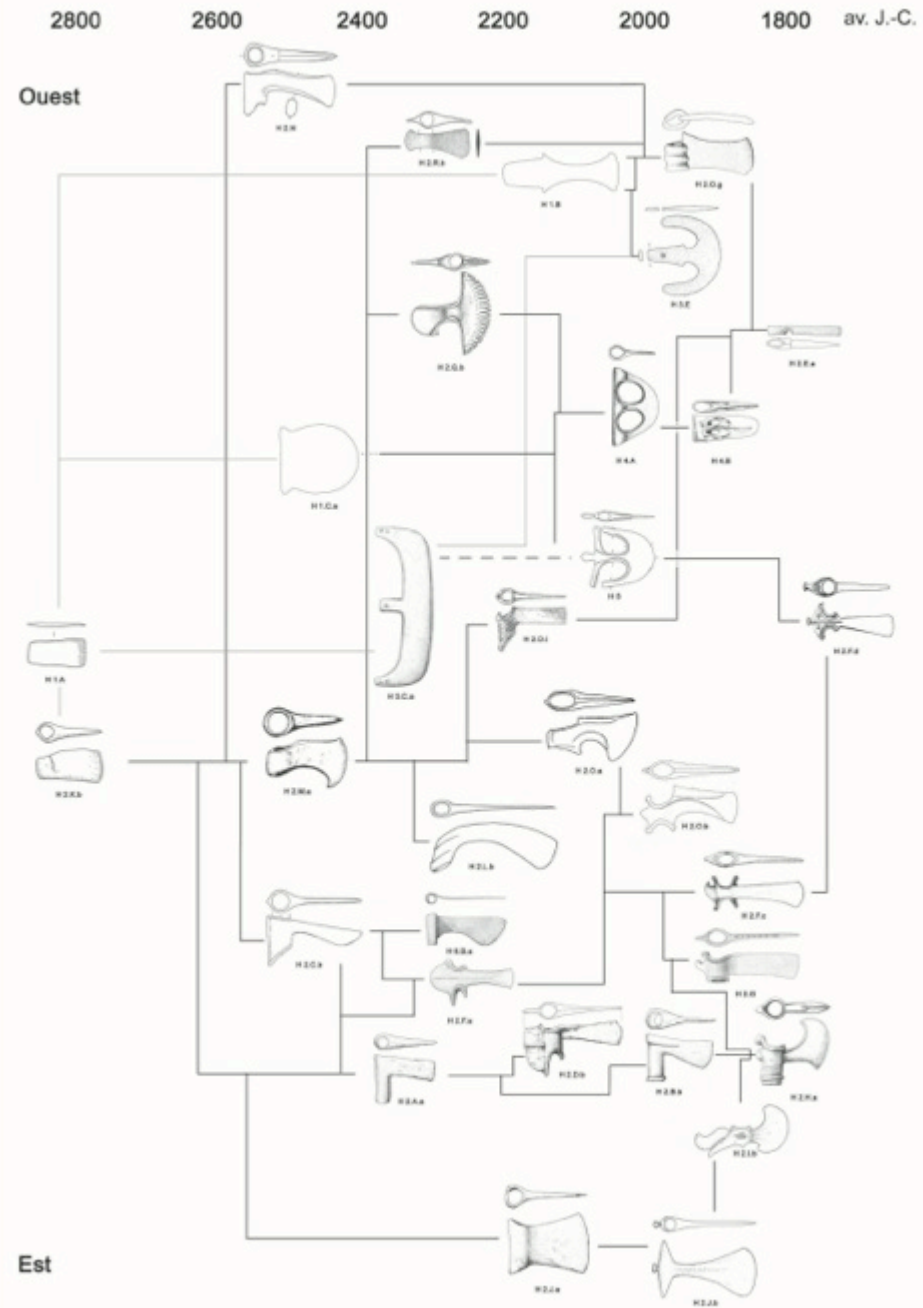


Lugged flat axe / *Kolcuclu yassi balt*
Arsenical copper / *Arsenikli bakır*,
L / U 12.9, Provenance unknown /
Buluntu yeri bilinmiyor,
18th c. BCE / MÖ 18. yy.
Samsun Müzesi

KOLCUKLU BALTALAR







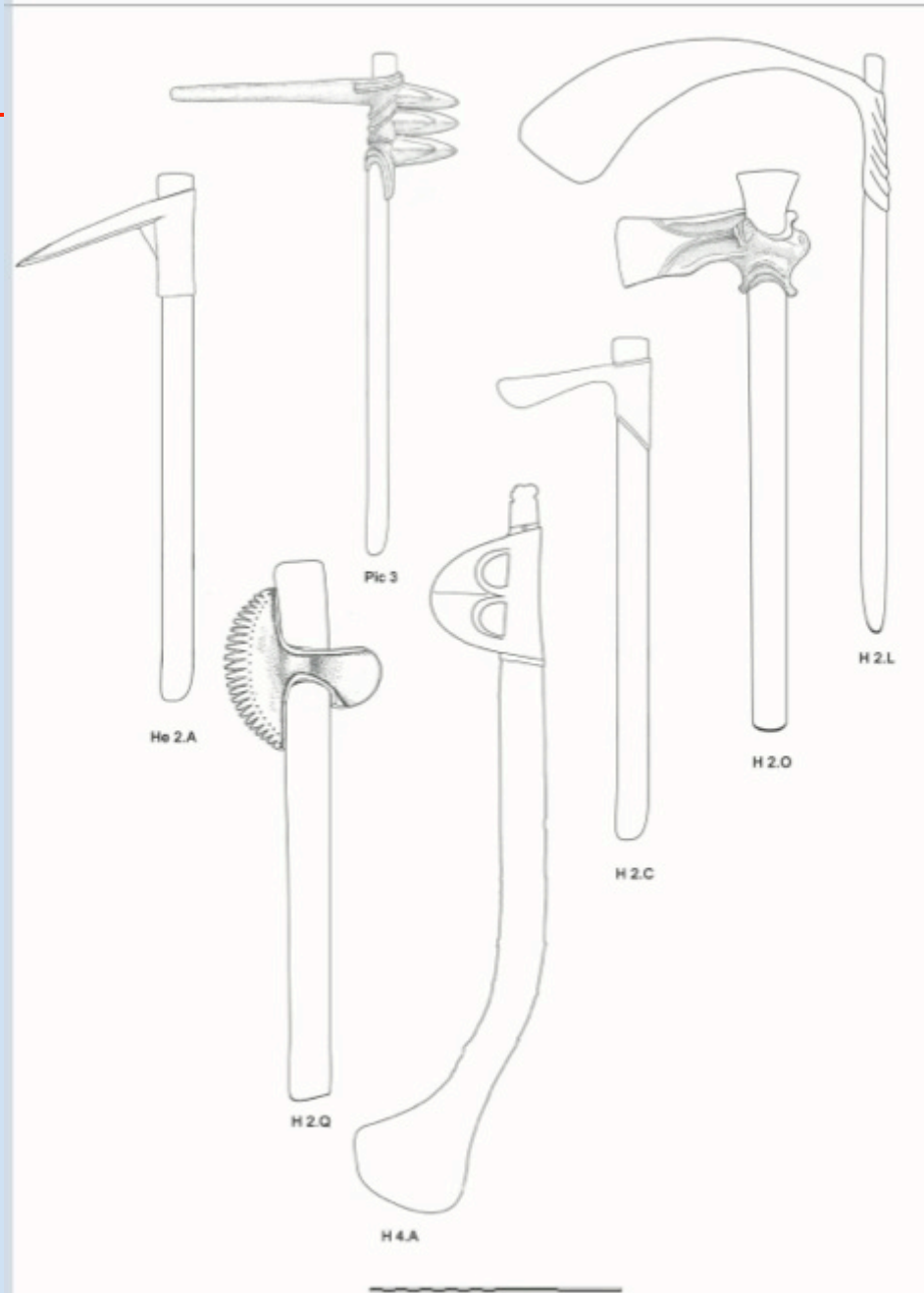
aa.49. Développement des types et influences morpho-fonctionnelles : les haches.



Double axe with shaft-hole and lugs in the form of eagle heads / *Sap delikli, kartal başı biçimindeki falcaklı, çift ağızlı balta*
Bronze / *Taş*, L / U 19.2, Korusuk-Bolu,
Hittite Imperial Period / *Hitt İmparatorluk Çağı*,
14th-13th c. BCE / *MÖ 14-13. yy.*
Bolu Müzesi

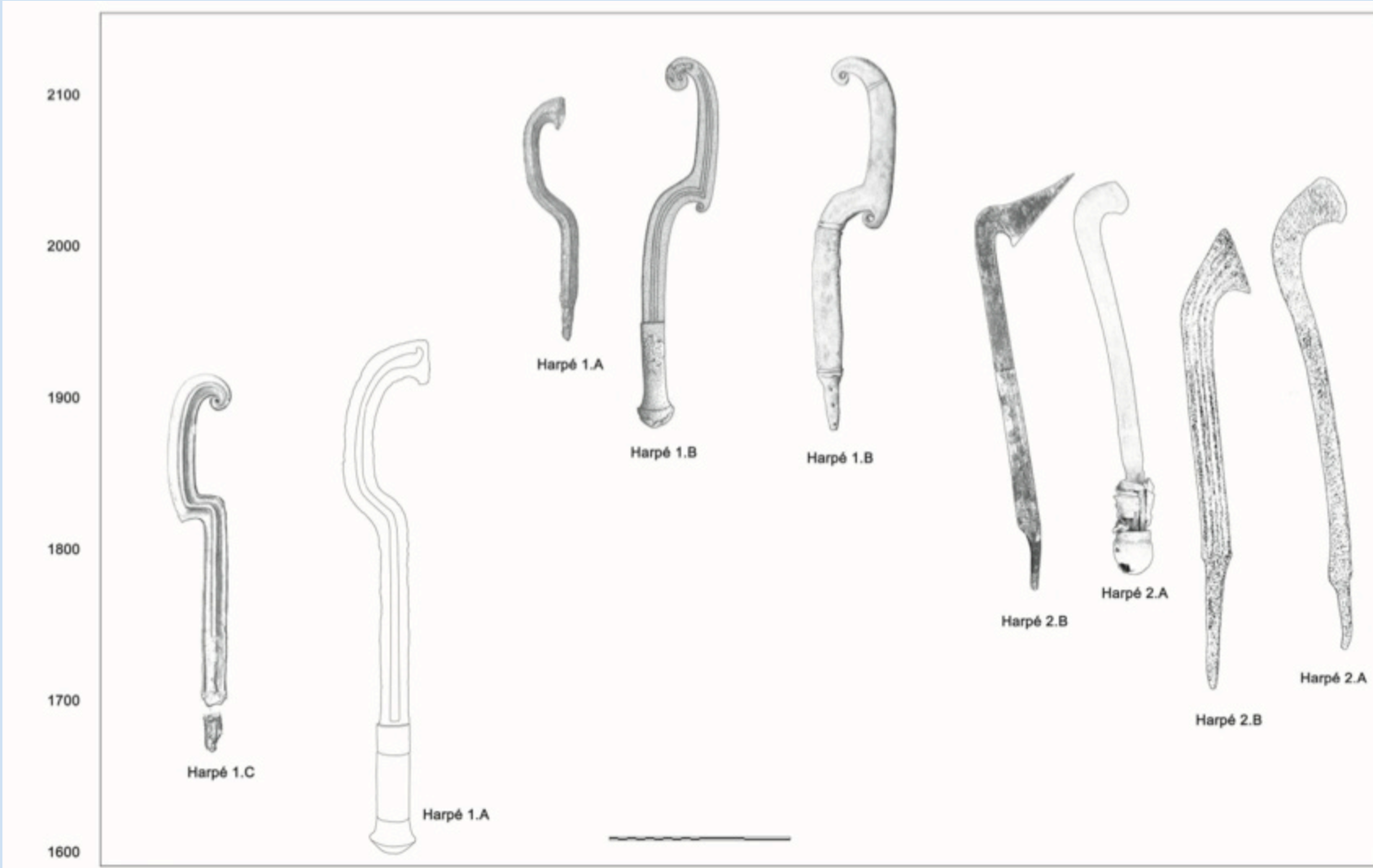


Shaft-hole axe decorated with gods, lions and eagle heads in relief / *Kabartma Taarı, arslan ve kartal başları ile bezekli sap delikli balta*
Bronze / *Taş*, L / Y 19.5, Şarkışla-Sivas,
Hittite Imperial Period / *Hitt İmparatorluk Çağı*,
14th-13th c. BCE / *MÖ 14-13. yy.*
Vorderasiatisches Museum-Berlin





ORAK BIÇİMLİ KILIÇLAR



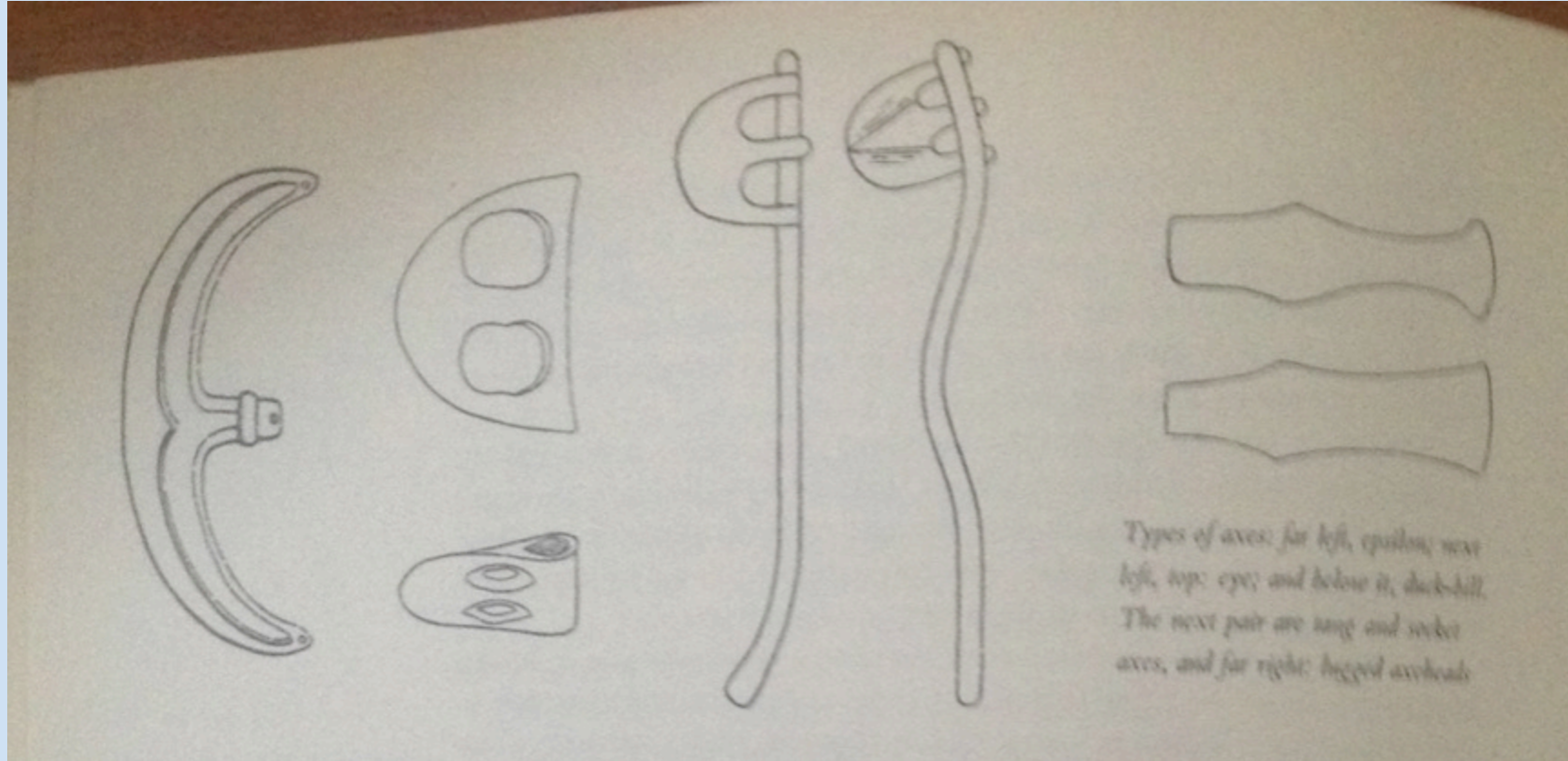
aa.46. Typochronologie des harpés.

Les harpès

d'Anatolie centrale, les harpès ont été l'un des symboles majeurs de la représentation du pouvoir humain et divin.



Fig. 2.131 – La harpé et l'image au II^e et au I^{er} millénaire.
a : Tello, b : Nuzi, c : Karnak, d : Yalhkaya, e : tablette d'Assur-nadin-shumi. (D'après Gernez 2007).





209. El Bersheh. Tombe de Djehoutihotep (Tehuti-Hetep).
Détail de la peinture murale.
(D'après Yadin 1963, p. 155).



210. Meir. Tombe de Senbi (XIIe dyn.). Détail de la peinture murale.
(D'après Yadin 1963, p. 155).



211. Deir el-Bahri. Relief du temple funéraire de Montouhotep II (XIe dyn.).
(D'après Yadin 1963, p. 155).



214. Scène en relief sur un gobelet en bronze (Mésopotamie du nord, BM I).
(D'après Ziffer 1990, p. 82, fig. 90).



215. Ebla. Hypogée Q.78.C. Talisman du seigneur aux capridés (BM I B). ech 1:1.
(D'après Matthiae 1985, pl. 86).



216. Kültepe. Empreinte de sceau.
(D'après Ozgüç 1986, pl. 89.6).



217. Ebla. L.2846. Statue en basalte.
Hache fenestrée H 4.B..
TM.75.G.728.
(D'après Matthiae 1980, fig. 13).

ANATI



Spearhead decorated with female and male figures and sun discs in relief, Early Bronze Age
Kadın ve erkek figürleri ve Güneş kuruşu ile kabartmalı mızrakucu, İlk Tazıç Çağı



Spearhead with oval terminus and curved tang / Oval uçlu, kıvrık saplı mızrakucu
Arsenical copper / Arsenikli bakır,
L / U 34.5, İkiztepe-Samsun
27th c. BCE / MÖ 27. yy,
Samsun Müzesi



Butted spearhead / Boğumlu mızrakucu
Arsenical copper / Arsenikli bakır,
L / U 34.7, İkiztepe-Samsun
27th c. BCE / MÖ 27. yy,
Samsun Müzesi



Spearhead with bulging blade /
Şişkin namlulu mızrakucu
Arsenical copper / Arsenikli bakır,
L / U 38.5, İkiztepe-Samsun
23rd c. BCE / MÖ 23. yy.
Samsun Müzesi



Spearhead with slits /
Baş delikli mızrakucu
Arsenical copper / Arsenikli bakır,
L / U 33.5, İkiztepe-Samsun
22nd c. BCE / MÖ 22. yy.
Samsun Müzesi



Spearhead with slits /
Baş delikli mızrakucu
Arsenical copper / Arsenikli bakır,
L / U 19, Amasya Region
22nd c. BCE / MÖ 22. yy.
Amasya Müzesi



Spearhead with splayed
terminus and straight tang /
Düz saplı teber uğlu mızrakucu
Arsenical copper /
Arsenikli bakır,
L / U 22.8, İkiztepe-Samsun
22nd c. BCE / MÖ 22. yy.
Samsun Müzesi



Grooved spearhead /
Oluklu mızrakucu
Arsenical copper /
Arsenikli bakır,
L / U 30.5, İkiztepe-Samsun
23rd c. BCE / MÖ 23. yy.
Samsun Müzesi



Double grooved spearhead /
Çift oluklu mızrakucu
Arsenical copper /
Arsenikli bakır,
L / U 35.2, İkiztepe-Samsun
23rd c. BCE / MÖ 23. yy.
Samsun Müzesi



Spearhead with splayed
terminus and curved tang /
Teber uğlu ve kıvrık saplı
mızrakucu
Arsenical copper /
Arsenikli bakır,
L / U 28.7, İkiztepe-Samsun
23rd c. BCE / MÖ 23. yy.
Samsun Müzesi



Spearhead with rectangular blade /
Dikdörtgen namlulu mızrakucu
Arsenical copper / Arsenikli bakır, L / U 33,
İkiztepe-Samsun
23rd c. BCE / MÖ 23. yy.
Samsun Müzesi



Butted spearhead with long blade /
Boğumlu ve uzun namlulu mızrakucu
Arsenical copper / Arsenikli bakır,
L / U 44 2, İkiztepe-Samsun
23rd c. BCE / MÖ 23. yy.
Samsun Müzesi



Butted spearhead with ros
blade / Boğumlu ve yuvarla
namlulu mızrakucu
Arsenical copper / Arsenikli
L / U 32.5, Terme-Samsun
22nd c. BCE / MÖ 22. yy.
Samsun Müzesi



Spearhead with double lobed blade /
İki loblu mızrakucu
Arsenical copper / Arsenikli bakır, L / U 31,
Samsun Region / Bölgesi
22nd c. BCE / MÖ 22. yy.
Private Collection / Özel Koleksiyon-Samsun



Arrowhead / Okucu
Arsenical copper / Arsenikli bakır,
L / U 7.8, İkiztepe-Samsun
23rd c. BCE / MÖ 23. yy.
Samsun Müzesi



Javelin head / Kargıca
Arsenical copper / Arsenikli bakır,
L / U 40, Amasya Region / Bölgesi
22nd c. BCE / MÖ 22. yy.
Amasya Müzesi